



29



SOLARIA

Solaria PowerXT™  
Pedestrian Module

www.solaria.com/sefents

# SOLARIA®

## PowerXT- 430R-PL

Peak Power	(Pmax)	430	W
Power Tolerance		-0 / +3%	
Voltage at Pmax	(Vmp)	37.9	V
Current at Pmax	(Imp)	11.35	A
Open Circuit Voltage (±5%)	(Voc)	45.7	V
Short Circuit Current (±5%)	(Isc)	11.87	A
Maximum Series Fuse		20	A

All ratings at standard test conditions: 1000 W/m<sup>2</sup>, AM 1.5 spectrum, 25°C.  
Field connections: use min. 12 AWG copper wires insulated for 90°C min.



U61730 - IEC 61215 - IEC 61730



~ WARNING ~  
ELECTRICAL HAZARD

Read and comply with Product Installation Manual

IEC Fire Rating Class C - UL Type 1  
Application Class II

See Installation Manual for  
Installation Requirements to  
Achieve a Specified System Fire  
Class Rating with this Product



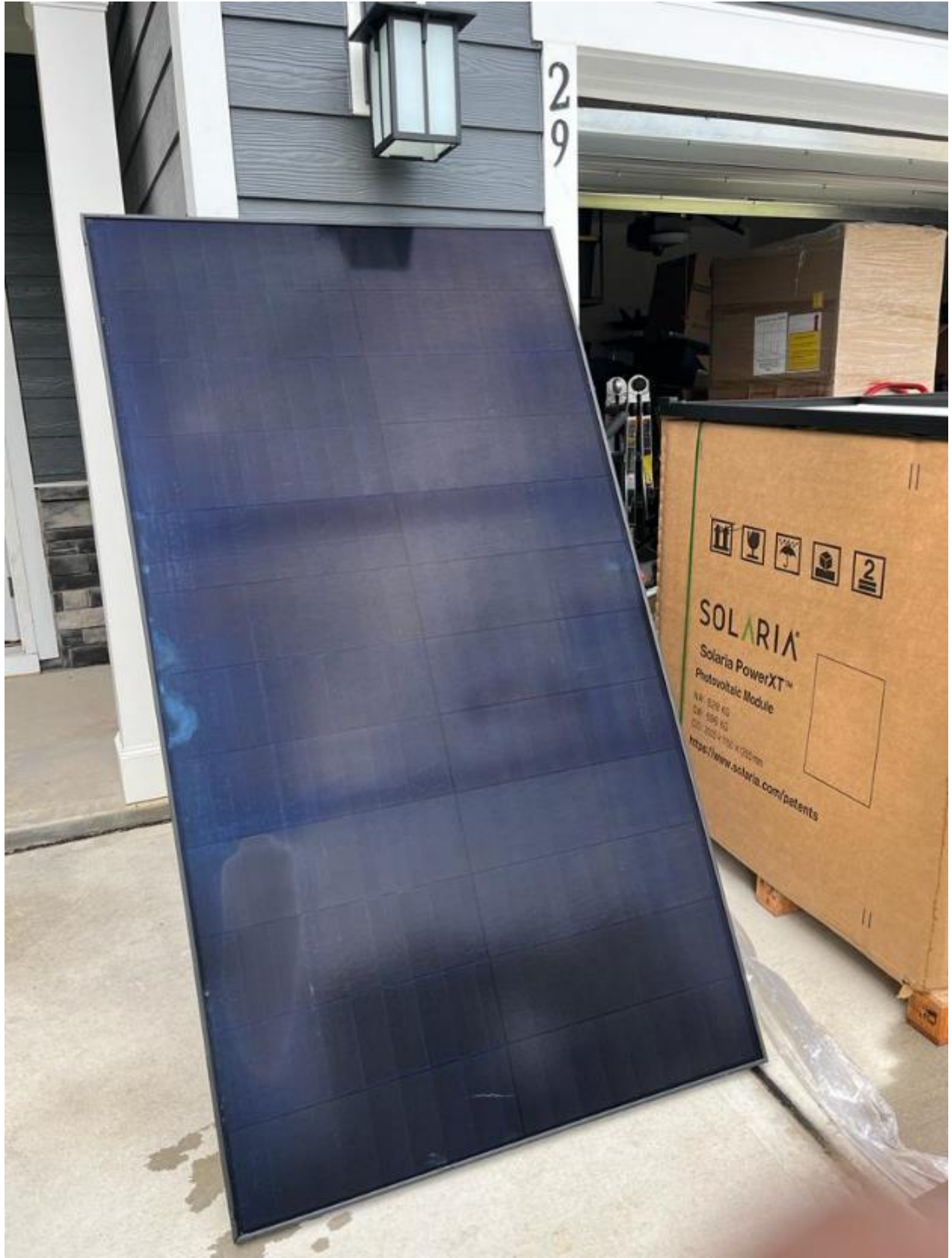
201952151014597

Maximum Permissible System Voltage 1000V DC

Made in Taiwan

XT-CERT-00

29 DEKALB COURT  
FUQUAY VARINA NC 27526



29

**SOLARIA**  
PowerKIT-4300-PL

Peak Power	(P <sub>peak</sub> )	21	W
Power Tolerance	(P <sub>tol</sub> )	±3%	
Voltage at Peak	(V <sub>peak</sub> )	28	V
Current at Peak	(I <sub>peak</sub> )	1.35	A
Open Circuit Voltage	(V <sub>oc</sub> )	25.7	V
Short Circuit Current	(I <sub>sc</sub> )	11.5	A
Maximum Power Point	(P <sub>mp</sub> )	20	W

PTL

**WARNING - ELECTRICAL HAZARD**

201902101014597

Maximum Power Point System Voltage: 1000V DC

Model: S-4300-PL

29 DEKALB COURT  
FUQUAY VARINA NC 27526

























































UL  
CERTIFIED  
SAFETY US-CA  
E486080

200

840-00455-08  
250VAC 20A  
+79°C 2236

D









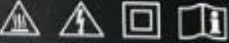


 **ENPHASE**

**IQ8+**

Grid Support Utility Interactive Inverter  
Multimode Inverter

Off-grid Power Factor: 1 to 0 to +1  
Grid-tied Power Factor: +/- 0.99  
DC input range: 25-58 V  
Max. input short-circuit current: 18 A  
Max. input continuous current: 18.8 A  
AC output voltage: 240 V  
AC output frequency: 1.21 A  
AC output frequency: 60 Hz  
AC output power (max. continuous): 290 W  
Operating temperature: -40 °C to +60 °C  
Ingress protection: IP65 (Type B)  
Photovoltaic Rapid Shutdown Equipment  
NEC 690.12 and 690.12-1-2015 Rule 64-218  
UL1741 SA Compliant | Assembled in India



This device complies with part 15 of the FCC Rules. Operation is subject to the following two conditions: (1) This device may not cause harmful interference. (2) This device must accept any interference received, including interference that may cause undesired operation.



**CAUTION: RISK OF SHOCK. WARRANTY VOID IF COVER REMOVED. NO USER SERVICEABLE PARTS INSIDE. REFER SERVICING TO QUALIFIED SERVICE PERSONNEL.**

**WARNING:** ELECTRIC SHOCK HAZARD. DC CONDUCTORS OF THIS PHOTOVOLTAIC SYSTEM ARE UNGROUNDED AND MAY BE ENERGIZED. AC AND DC VOLTAGE SOURCES TERMINATE INSIDE THIS EQUIPMENT. DISCONNECT BOTH BEFORE SERVICING. PHOTOVOLTAIC ARRAY SUPPLIES A DC VOLTAGE TO THIS EQUIPMENT. WHEN EXPOSED TO LIGHT, HOT SURFACES, TO REDUCE THE RISK OF BURNS - DO NOT TOUCH.

**ATTENTION:** RISQUE D'ELECTROCUTION. LES CONDUCTEURS DC DE CE SYSTEME PHOTOVOLTAIQUE NE SONT PAS RELIES A LA TERRE ET PEUVENT ETRE SOUS TENSION. DES SOURCES DE TENSION CA ET CC SONT CONNECTEES A CET APPAREIL. ISOLER LES DEUX SOURCES AVANT TOUTE INTERVENTION. LES CABLES COURANT CONTINU SONT SOUS TENSION LORSQUE LE CHAMP PHOTOVOLTAIQUE EST EXPOSE A LA LUMIERE. RISQUE DE BRULURE. NE PAS TOUCHER.







HWN-2 90C dry/wet 2/C 12AWG -40C oil res | sunlight





**ENPHASE**

**IQ8+**

Solid State Single-Phase Interactive Inverter  
Multimode Inverter

UL Listed Product Category: Type II, Class B  
Max. input power: 2000 W  
Max. input AC current: 15 A  
Max. output power: 2000 W  
Max. output AC current: 15 A  
All output terminals: 1/2" x 1/8"  
All output terminals: 1/2" x 1/8"  
All output terminals: 1/2" x 1/8"  
Operating temperature: -40 °C to 60 °C  
Maximum ambient temperature: 40 °C  
Maximum input voltage: 600 V  
Maximum output voltage: 600 V  
Max. AC input current: 15 A  
Max. AC output current: 15 A  
Max. AC input power: 2000 W  
Max. AC output power: 2000 W

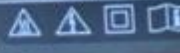
This device complies with part 15 of the FCC Rules. Operation is subject to the following two conditions: (1) This device may not cause harmful interference. (2) This device must accept any interference received, including interference that may cause undesired operation.



**CAUTION: RISK OF SHOCK. WARRANTY VOID IF COVER REMOVED FOR UNAUTHORIZED PARTS INSIDE. REFER SERVICING TO QUALIFIED SERVICE PERSONNEL.**

**WARNING:** ELECTRIC SHOCK HAZARD. AC CONDUCTIVE PARTS OF THIS PRODUCT ARE ENERGIZED BY THE AC POWER SOURCE. TO PREVENT ELECTRIC SHOCK, DISCONNECT BOTH INPUT AND OUTPUT WIRING FROM THE AC POWER SOURCE BEFORE WORKING ON THIS PRODUCT. THE RISK OF BURN IS HIGH. DO NOT TOUCH.

**ATTENTION:** THIS PRODUCT IS NOT TO BE USED IN CONJUNCTION WITH OTHER ENPHASE PRODUCTS. THIS PRODUCT IS NOT TO BE USED IN CONJUNCTION WITH OTHER ENPHASE PRODUCTS. THIS PRODUCT IS NOT TO BE USED IN CONJUNCTION WITH OTHER ENPHASE PRODUCTS. THIS PRODUCT IS NOT TO BE USED IN CONJUNCTION WITH OTHER ENPHASE PRODUCTS.





VN-2 90C dry/wet 2/C 12AWG -40C oil res 1









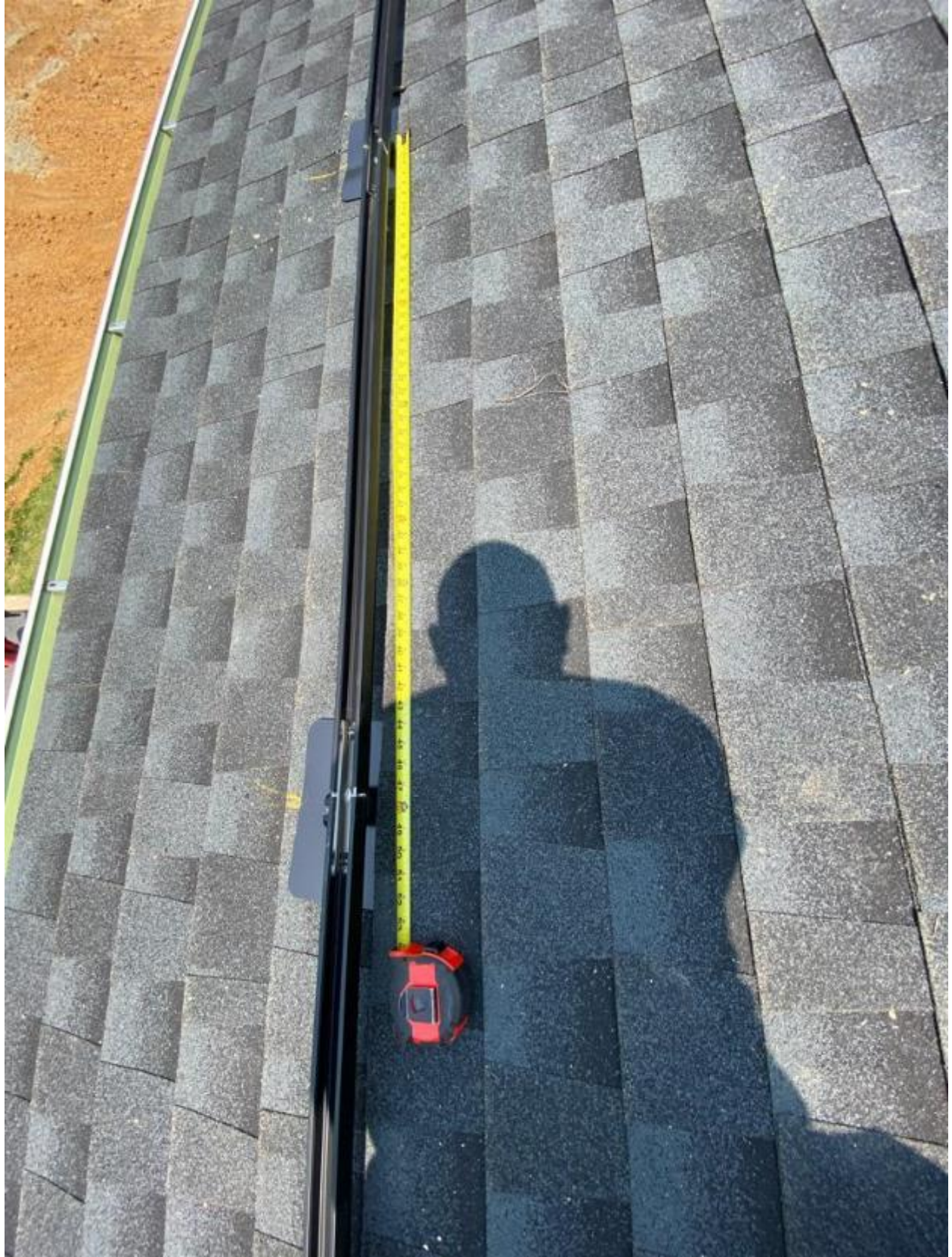
IQ8PLUS-72-M-US

885-01384 02 7972

482247027471



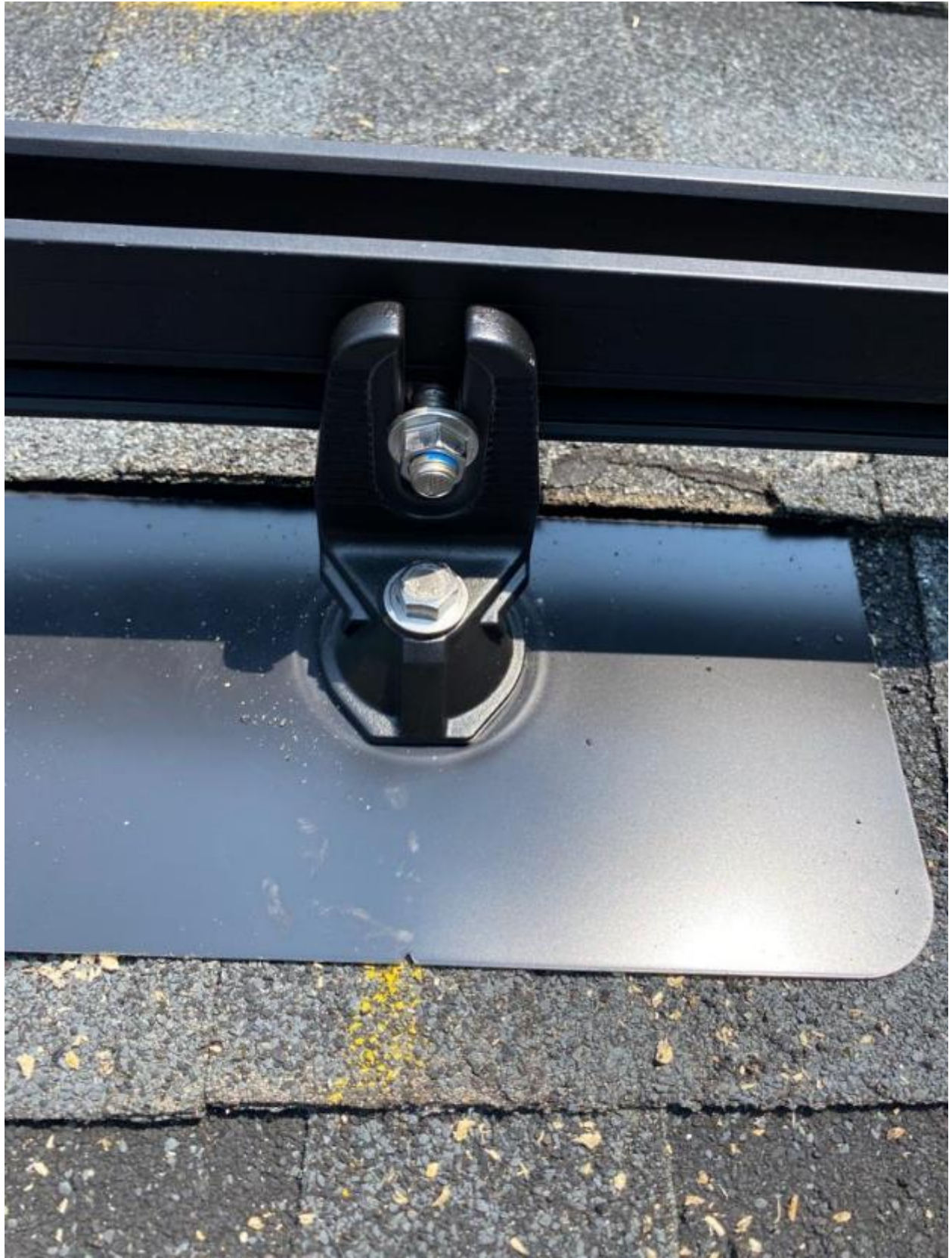




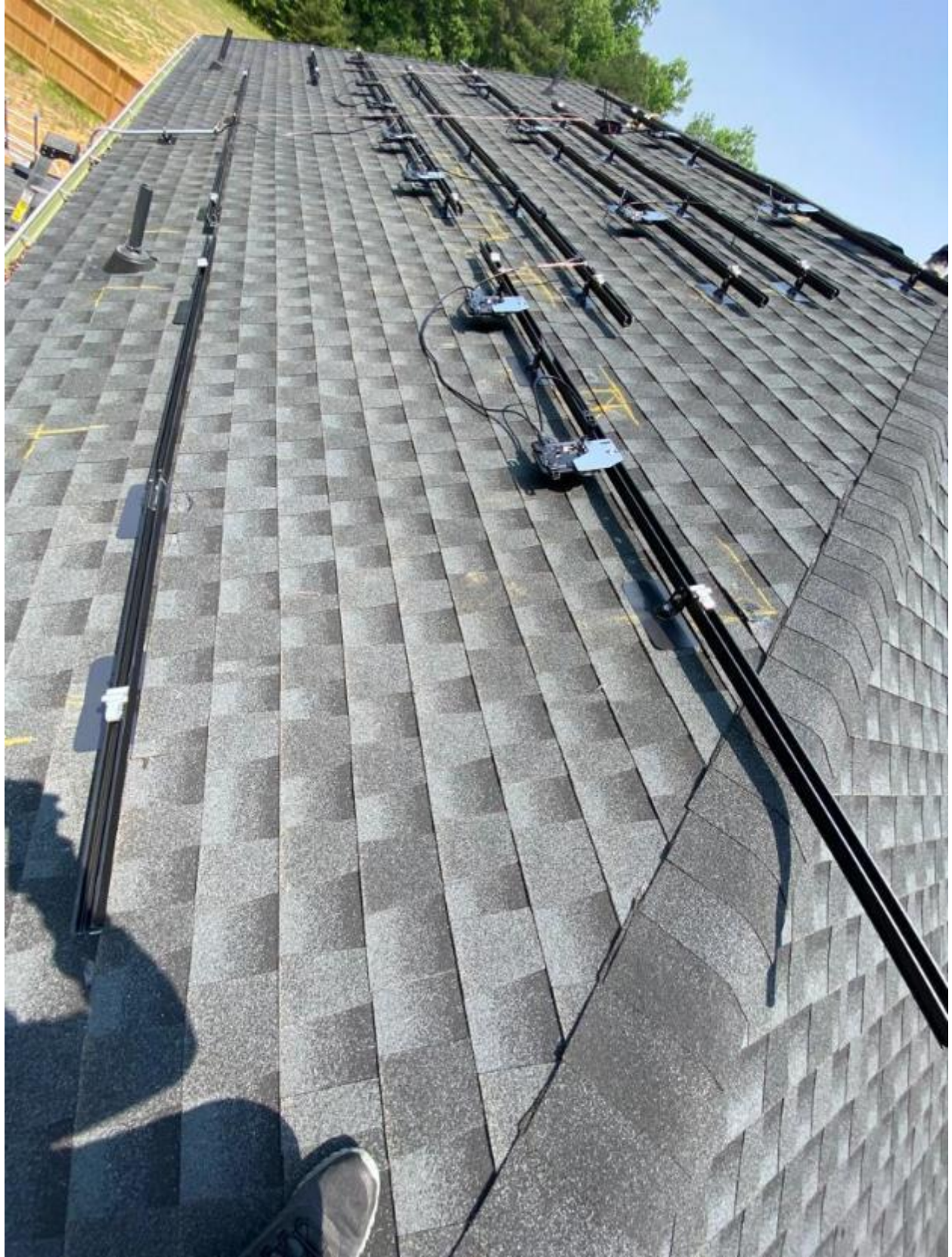








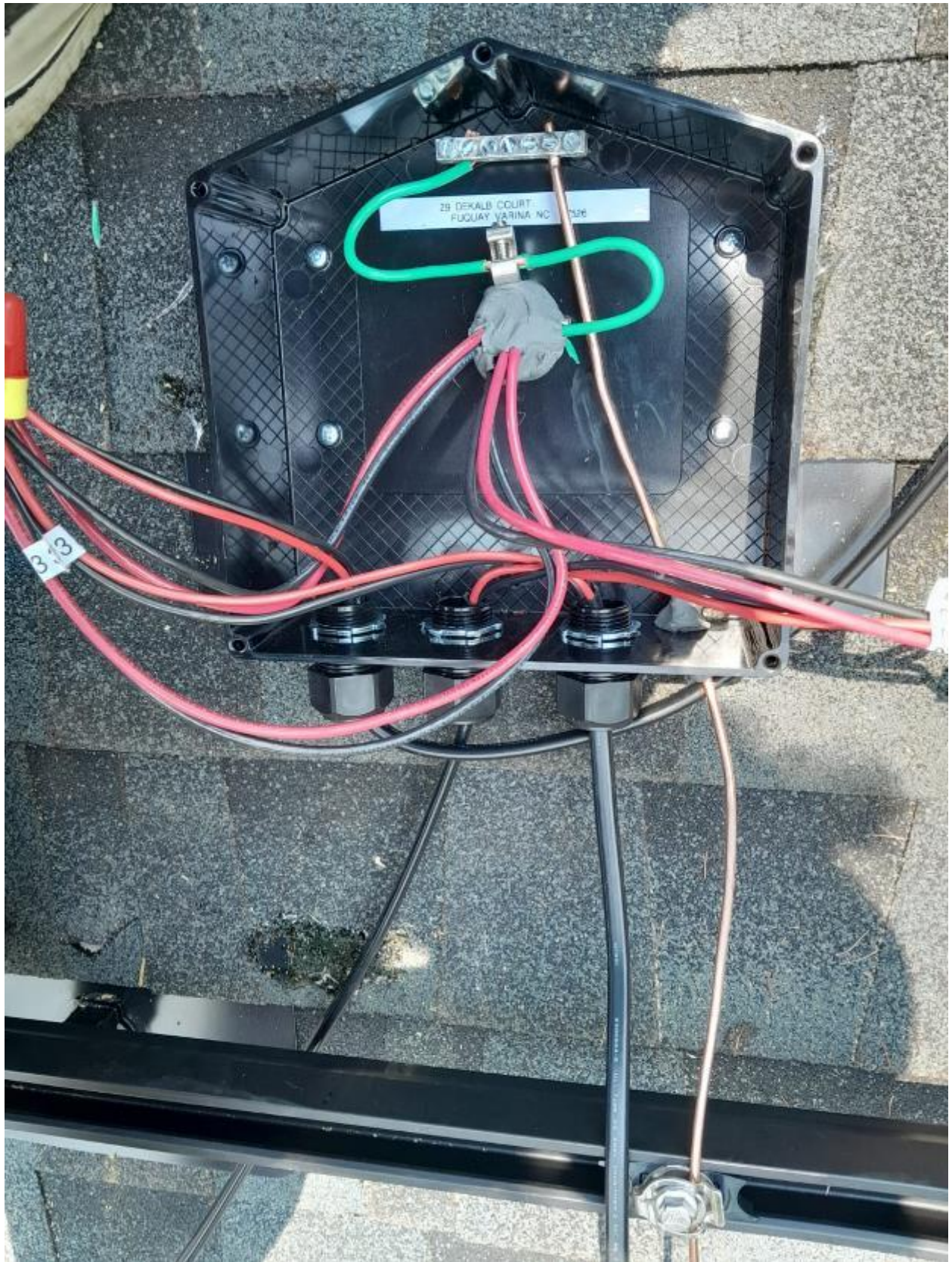








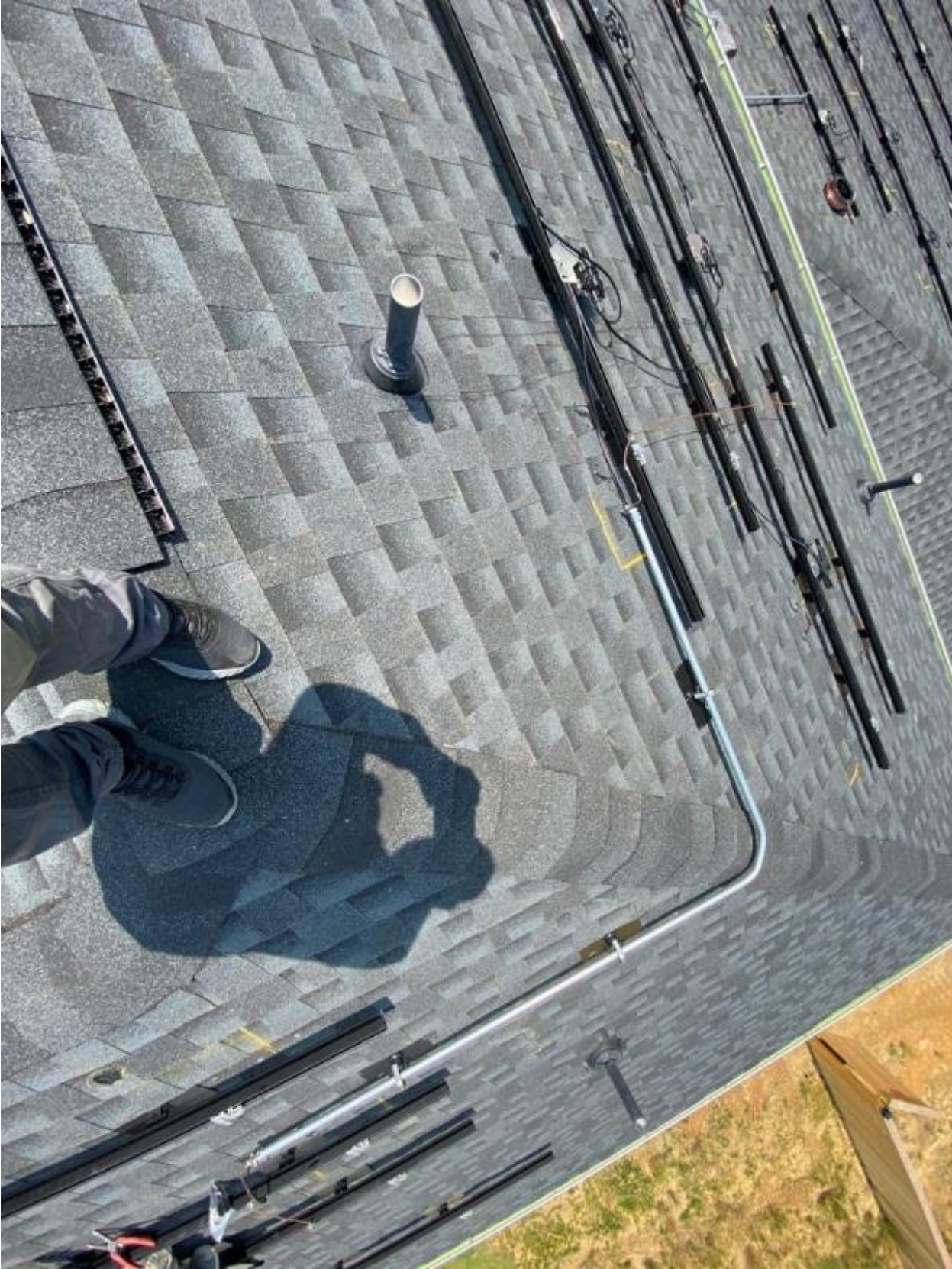








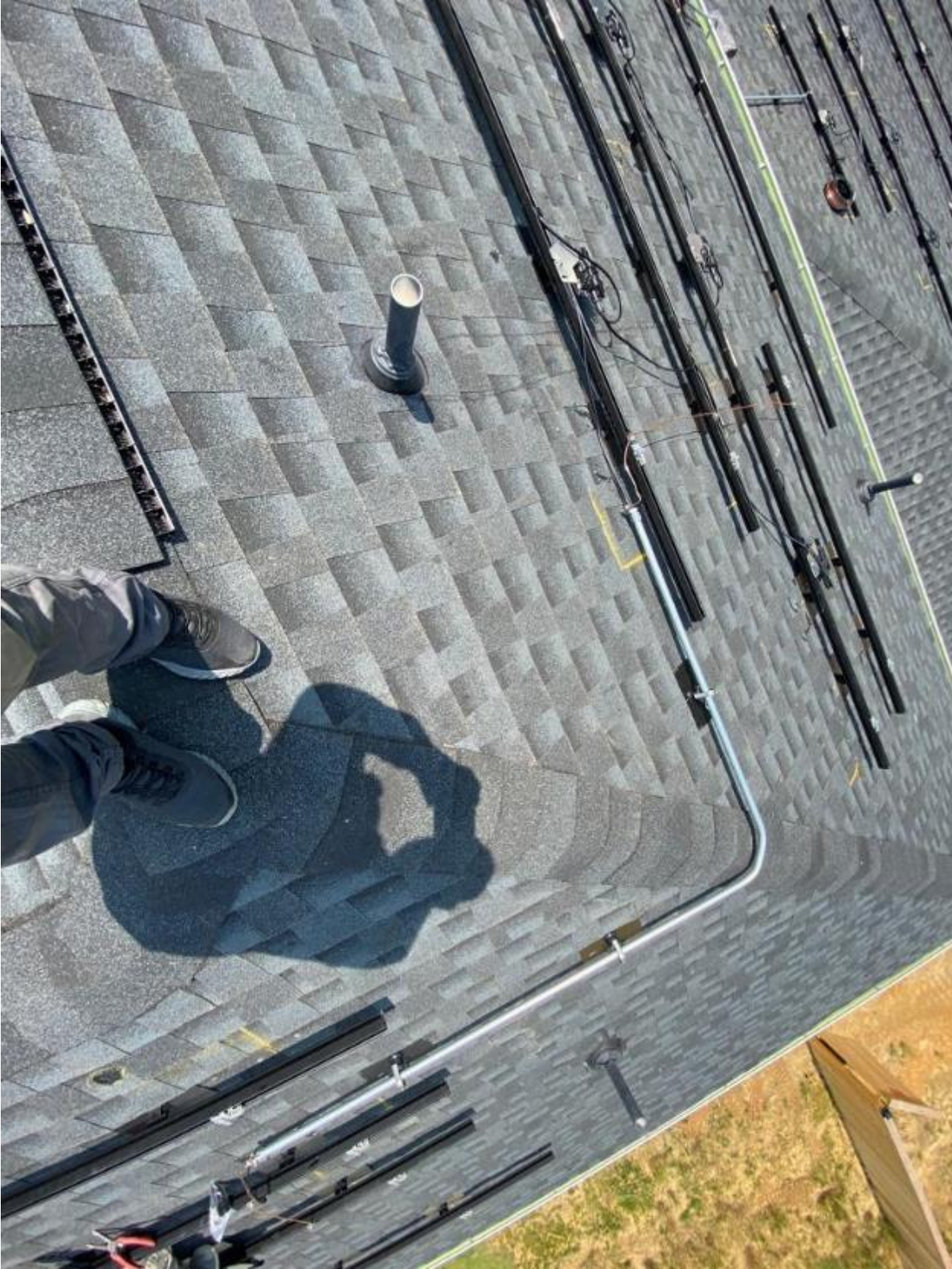














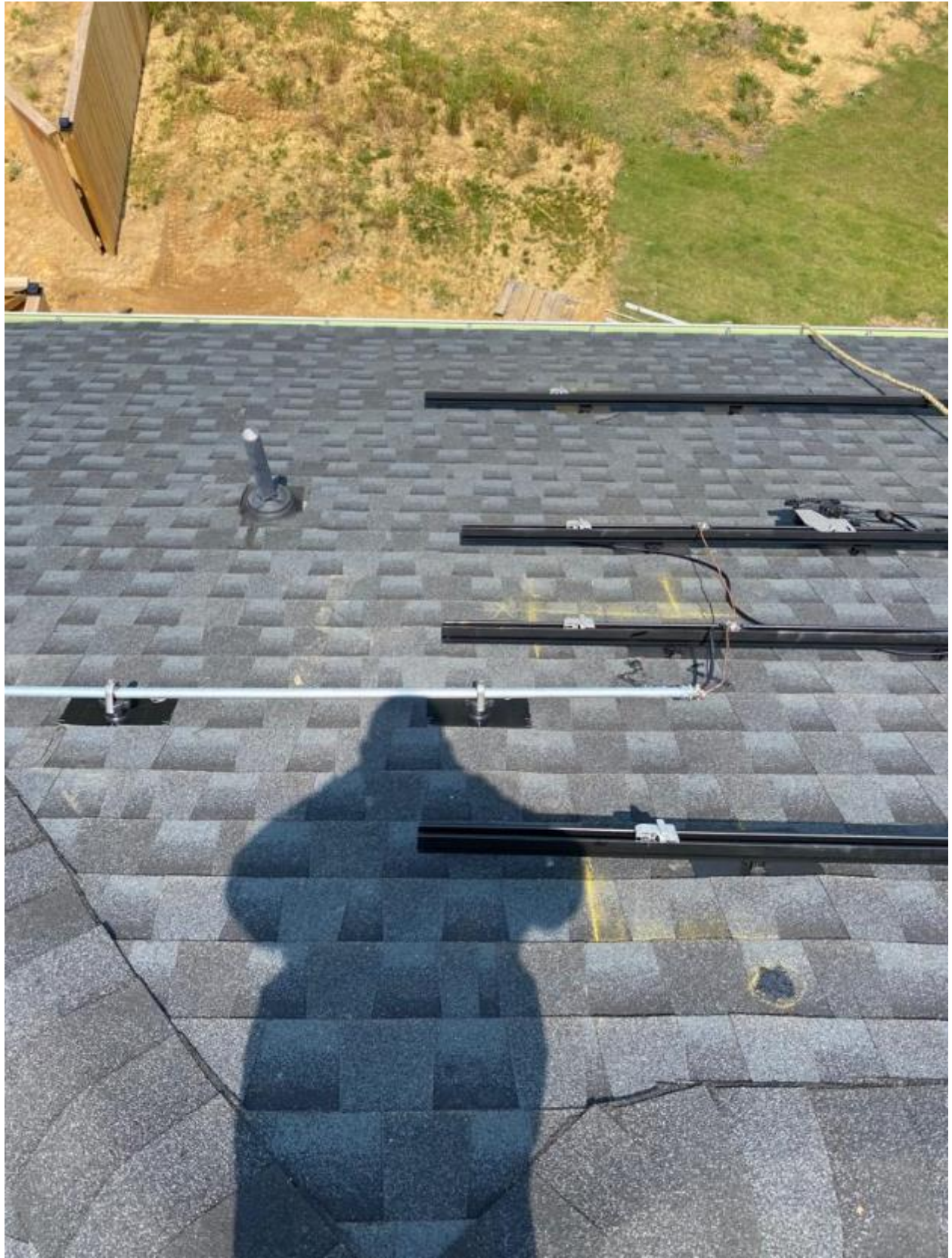


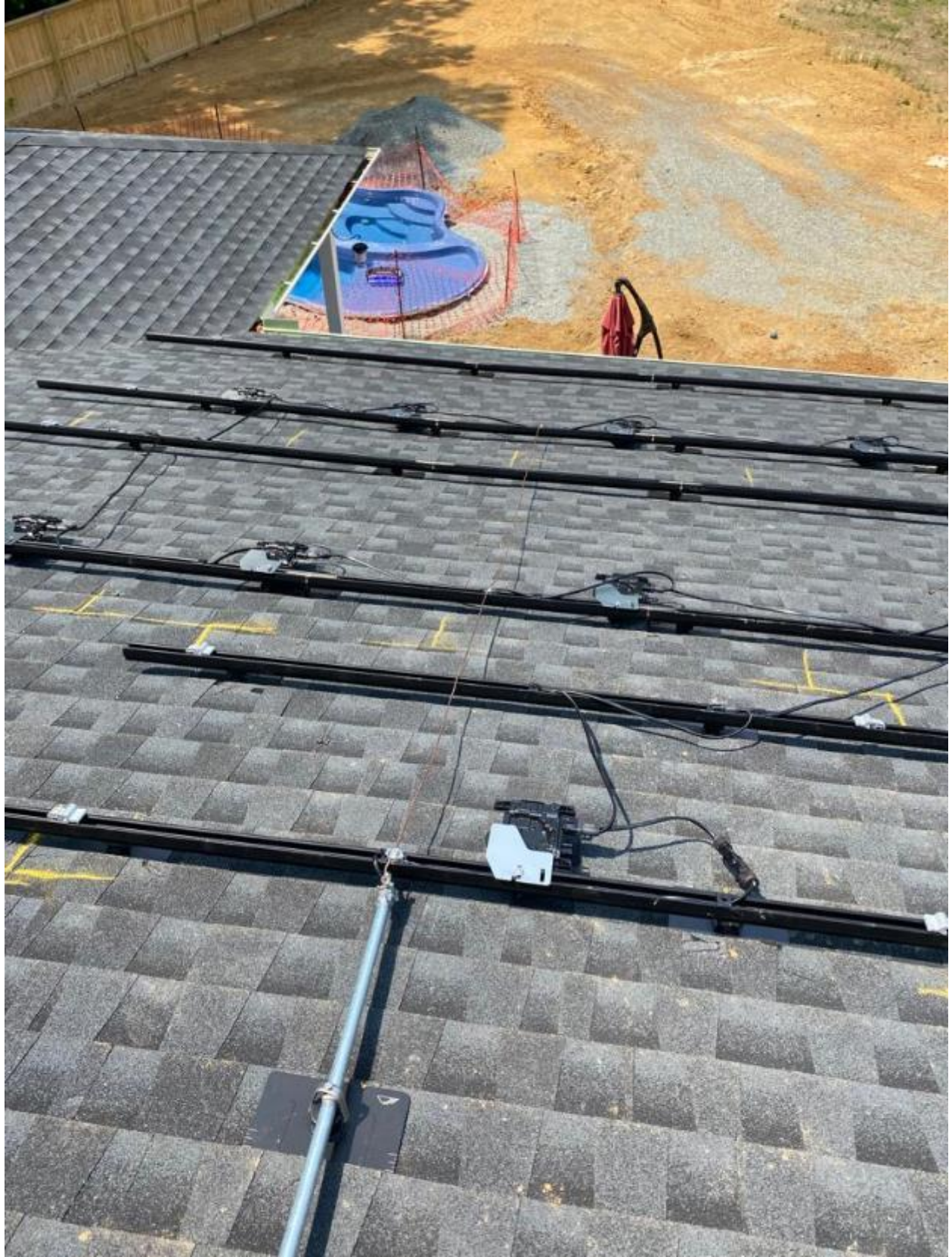




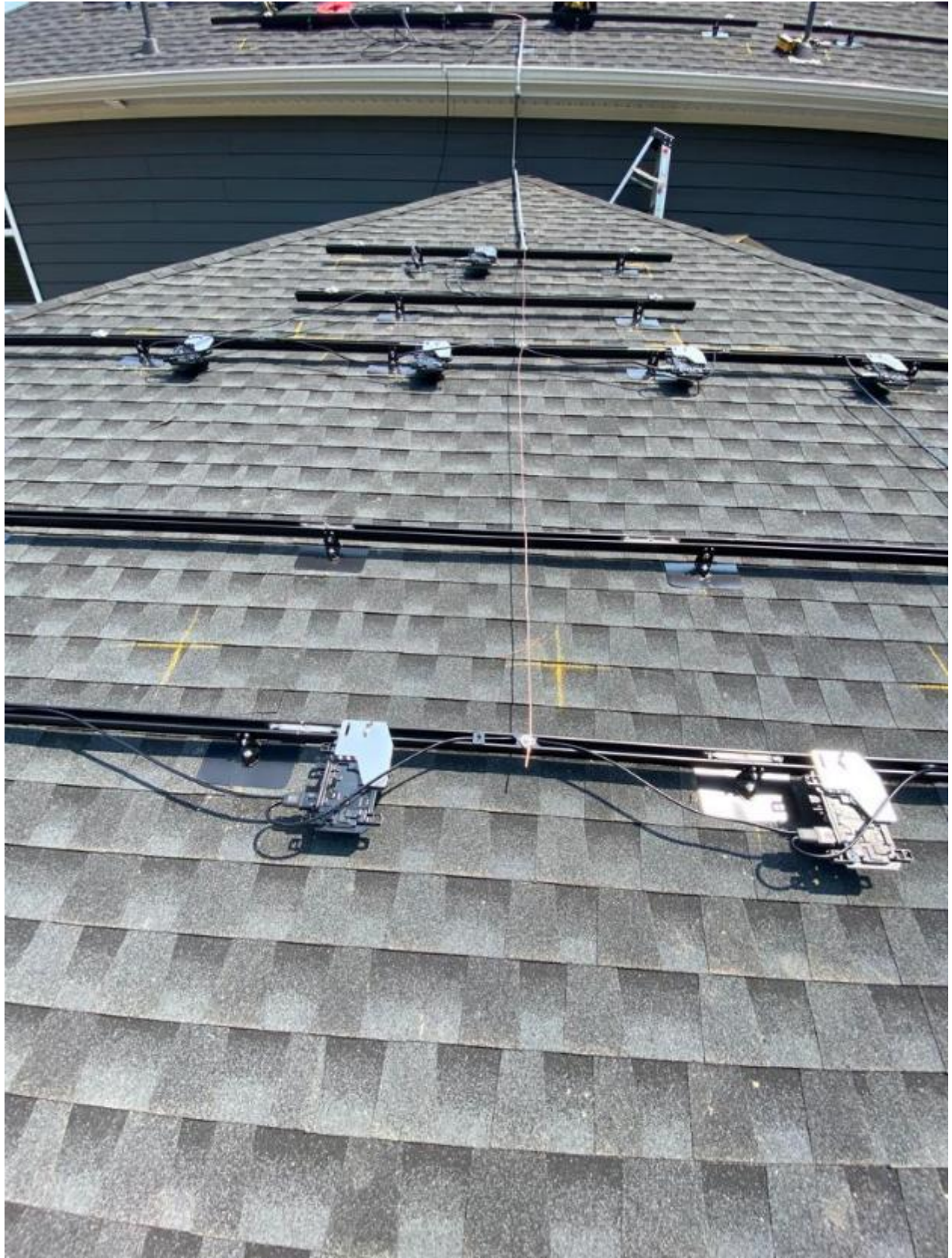


















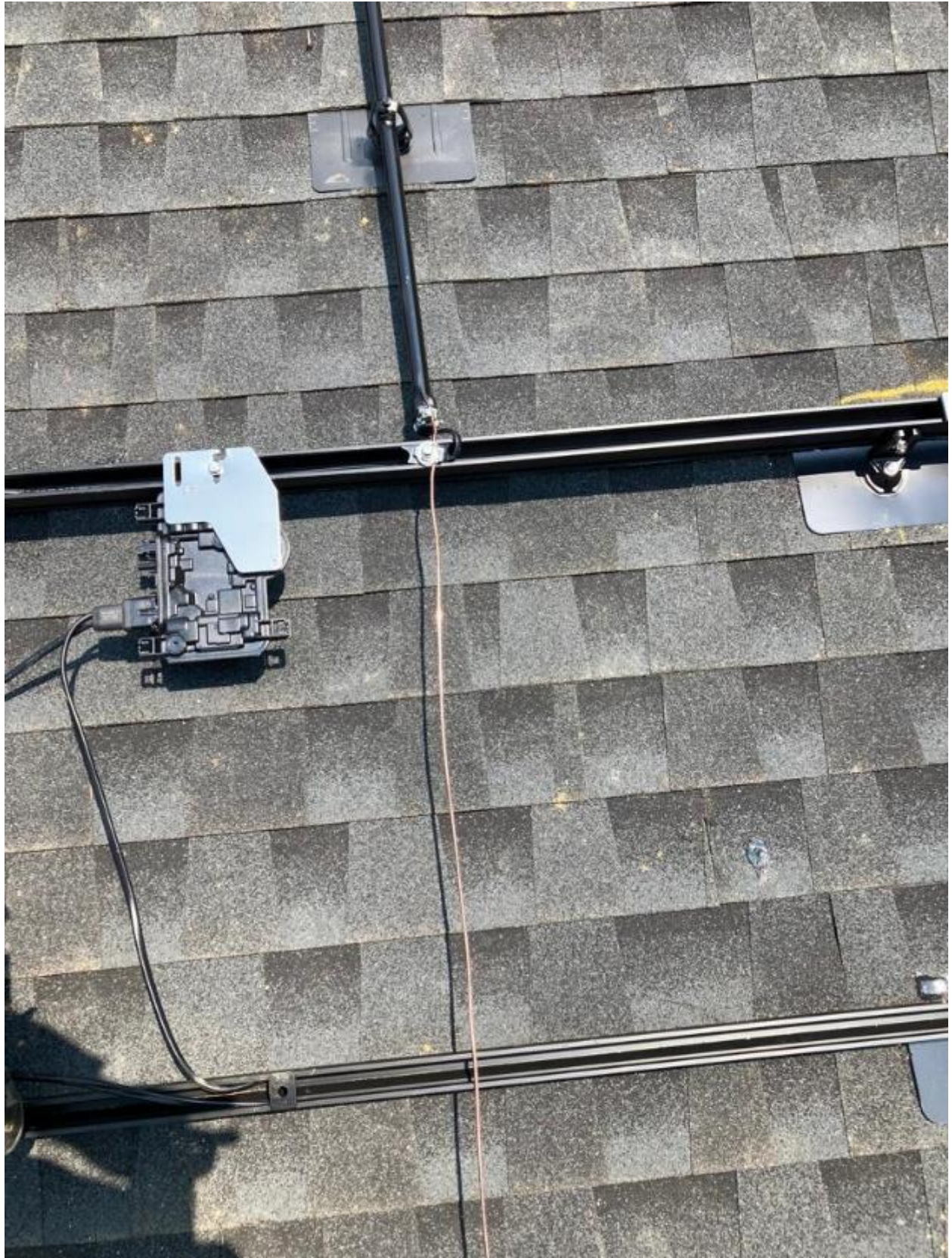






































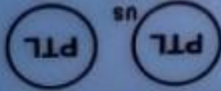


# SOLARIX

## PowerXT-430R-PL

430 W	(Pmax)	-0 / +3%
37.9 V	(Vmp)	
11.35 A	(Imp)	
45.7 V	(Voc)	
11.87 A	(Isc)	
20 A		Maximum Series Fuse

All ratings at standard test conditions: 1000 W/m<sup>2</sup>, AM 1.5 spectrum, 25°C. Field corrections: use min. 12 AWG copper wires insulated for 90°C min.



UL61730 - IEC 61215 - IEC 61730



### ~ WARNING ~ ELECTRICAL HAZARD

Read and comply with Product Installation Manual!



IEC Five Rating Class C - UL Type 1  
Application Class II  
See Installation Manual for  
Installation Requirements to  
Achieve a Specified System Fire  
Class Rating with this Product



201952151001177

Maximum Permissible System Voltage 1000V DC

Made in Taiwan

XT-CERT-00





























































**EMERGENCY DISCONNECT**

**WARNING**

WARNING: This device is not to be used for any other purpose than that intended. It is not to be used for any other purpose than that intended.

**WARNING**

WARNING: This device is not to be used for any other purpose than that intended. It is not to be used for any other purpose than that intended.

**WARNING**

WARNING: This device is not to be used for any other purpose than that intended. It is not to be used for any other purpose than that intended.

**SOLAR SYSTEM FAILURE**

ALTHOUGH THE SYSTEM IS DESIGNED TO PROTECT THE SYSTEM FROM OVERHEATING, IT IS NOT GUARANTEED TO PROTECT THE SYSTEM FROM OVERHEATING.

**WARNING**

WARNING: This device is not to be used for any other purpose than that intended. It is not to be used for any other purpose than that intended.

