

PHOTOVOLTAIC POWER SOURCE

CAUTION: SOLAR ELECTRIC SYSTEM CONNECTED

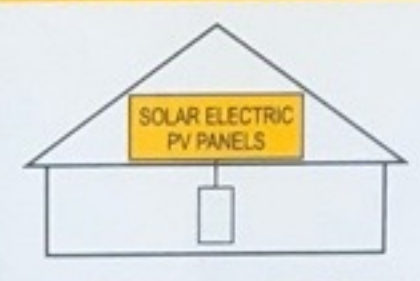
**WARNING**

THIS EQUIPMENT FED BY MULTIPLE SOURCES. TOTAL RATING OF ALL OVERCURRENT DEVICES, EXCLUDING MAIN SUPPLY OVERCURRENT DEVICE, SHALL NOT EXCEED AMPACITY OF BUSBAR.

solar**edge**

HD wave

**SOLAR PV SYSTEM EQUIPPED WITH RAPID SHUTDOWN**



TURN RAPID SHUTDOWN SWITCH TO THE "OFF" POSITION TO SHUT DOWN PV SYSTEM AND REDUCE SHOCK HAZARD IN THE ARRAY

**DC DISCONNECT**



NOMINAL OPERATING VOLTAGE	380	V
NOMINAL OPERATING FREQUENCY	25	Hz
MAXIMUM POWER	480	VA
MAXIMUM CURRENT	45	A
MAXIMUM OVERCURRENT DEVICE RATING FOR AC MODULE PROTECTION PER CIRCUIT	N/A	

solar**edge**

**DANGER**

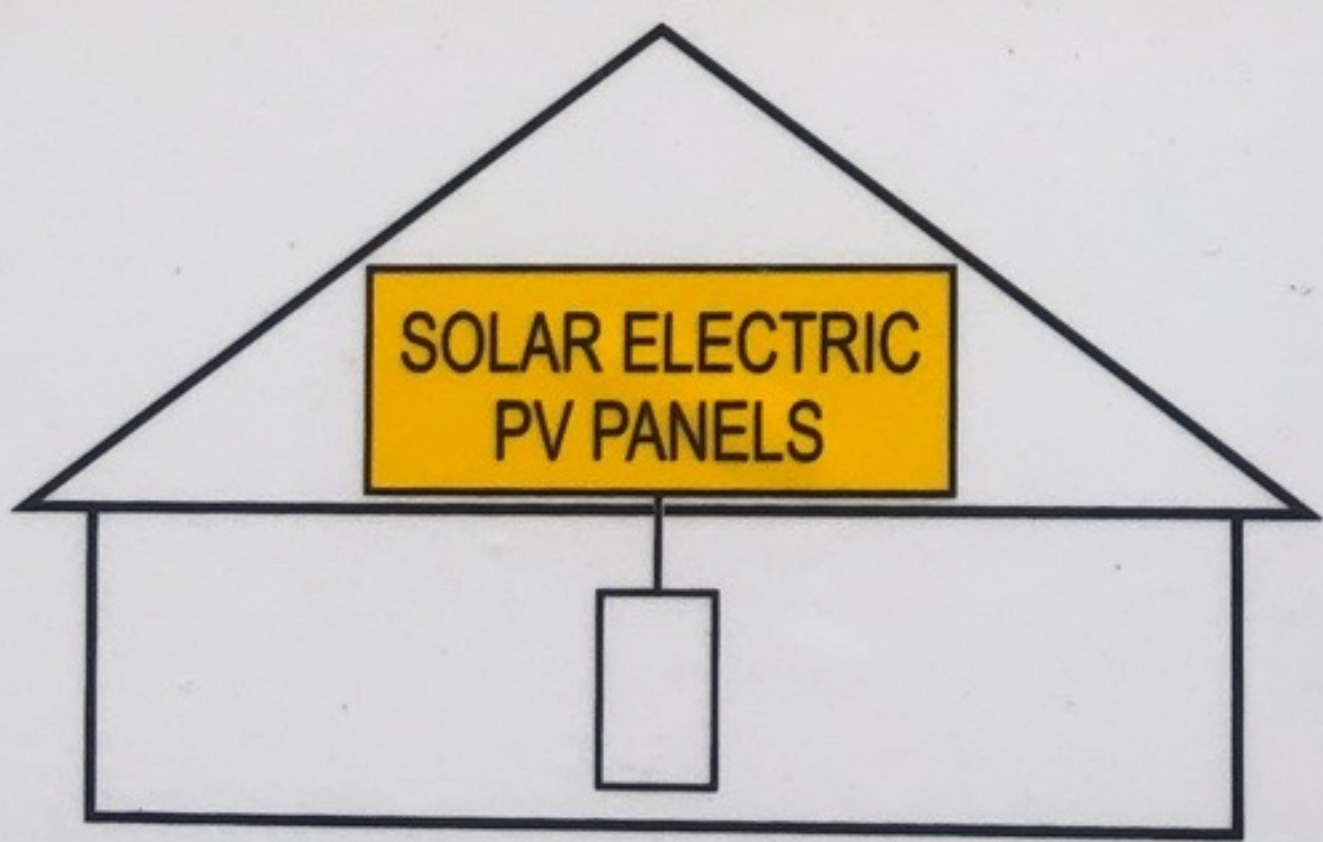
THIS ENERGY SOURCE HAS BEEN LOCKED OUT. UNAUTHORIZED REMOVAL OF THIS LOCK TAG MAY RESULT IN IMMEDIATE DISCHARGE.

REMARKS:

PHOTOVOLTAIC POWER SOURCE

pvlabs.com  **CAUTION**  03-338  
SOLAR POINT OF CONNECTION

**SOLAR PV SYSTEM  
EQUIPPED WITH  
RAPID SHUTDOWN**



pvlabs.com TURN RAPID SHUTDOWN SWITCH TO THE "OFF" POSITION TO SHUT DOWN PV SYSTEM AND REDUCE SHOCK HAZARD IN THE ARRAY 05-112

 **WARNING**  
DUAL POWER SUPPLY  
SOURCES: UTILITY GRID  
AND PV SOLAR  
ELECTRIC SYSTEM 05-411  
pvlabs.com



**EATON**

General Duty Safety Switch  
Interrupteur de sécurité à usage général  
Interruptor de seguridad de servicio general  
60 A, 240 V, 40 VA

Consulte todos los  
Valores nominales completos a Trabajar  
Interruptor siempre de seguridad en el  
interior

Consulte instrucciones de  
Alinee Interruptor a Trabajar  
Instrucciones adicionales en el interior  
Made in U.S.A. - Fabricado en  
U.S.A.

**MADE IN U.S.A.**

**WARNING**  
ELECTRIC SHOCK HAZARD  
TERMINALS ON THE LINE AND  
LOAD SIDES MAY BE ENERGIZED  
IN THE OPEN POSITION

**AC DISCONNECT**  
PHOTOVOLTAIC SYSTEM  
POWER SOURCE

RATED AC  
OUTPUT CURRENT **25** AMPS

NOMINAL OPERATING  
AC VOLTAGE **240** VOLTS

**RAPID SHUTDOWN  
SWITCH FOR  
SOLAR PV SYSTEM**

**PHOTOVOLTAIC POWER SOURCE**

MAIN



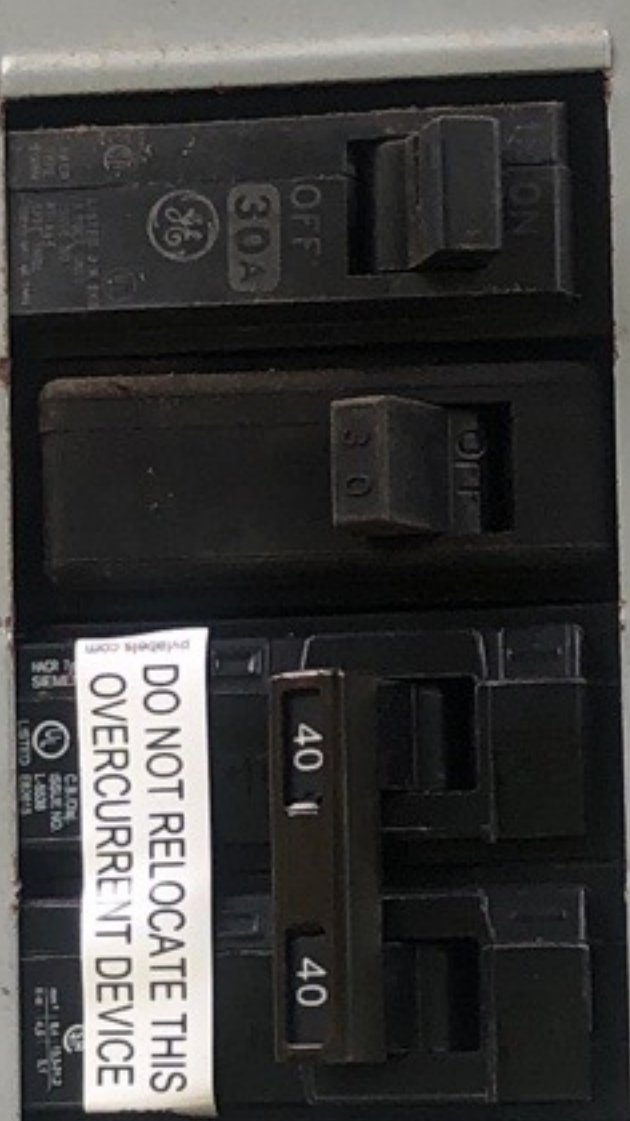
SEPTIC TANK PUMP

HOT TUB 1

H<sub>2</sub>O HEATER 3

SOLAR PV BREAKER  
BREAKER IS BACKFED  
DO NOT RELOCATE  
pvbreak.com 09-225

5  
7



2 HEAT

4 PUMP

6 HOT TUB

8





PHOTOVOLTAIC POWER SOURCE

**CAUTION: SOLAR ELECTRIC SYSTEM CONNECTED**

**WARNING**  
THIS EQUIPMENT MUST BE INSTALLED IN ACCORDANCE WITH THE NATIONAL ELECTRICAL CODE (NEC) AND ALL APPLICABLE LOCAL AND STATE REGULATIONS. FAILURE TO FOLLOW THESE INSTRUCTIONS MAY RESULT IN ELECTRICAL SHOCK, FIRE, OR DEATH.

**SOLAR PV SYSTEM EQUIPPED WITH RAPID SHUTDOWN**

**solarEdge HD**

THIS EQUIPMENT MUST BE INSTALLED IN ACCORDANCE WITH THE NATIONAL ELECTRICAL CODE (NEC) AND ALL APPLICABLE LOCAL AND STATE REGULATIONS. FAILURE TO FOLLOW THESE INSTRUCTIONS MAY RESULT IN ELECTRICAL SHOCK, FIRE, OR DEATH.

**DC DISCONNECT**

**DANGER**

THIS EQUIPMENT MUST BE INSTALLED IN ACCORDANCE WITH THE NATIONAL ELECTRICAL CODE (NEC) AND ALL APPLICABLE LOCAL AND STATE REGULATIONS. FAILURE TO FOLLOW THESE INSTRUCTIONS MAY RESULT IN ELECTRICAL SHOCK, FIRE, OR DEATH.

**E-T-N**

**RAPID SHUTDOWN SWITCH FOR SOLAR PV SYSTEM**

**WARNING**  
ELECTRIC SHOCK HAZARD. DEATH OR SERIOUS INJURY MAY OCCUR IF THIS SWITCH IS OPERATED WHILE THE PV SYSTEM IS ENERGIZED.

**AC DISCONNECT**  
APPLICABLE TO ALL PHOTOVOLTAIC POWER SOURCES.

15A 125V AC

PHOTOVOLTAIC POWER SOURCE

PHOTOVOLTAIC POWER SOURCE



