

# SIEMENS

## Rainproof Combination Metering

Catalog Number  
**MC0816B1200TH**

Enclosure  
**Type 3R**

**RATING**  
200 AMPS MAX  
120/240 VOLTS AC, 1 phase, 3 wire  
208Y/120 VOLTS AC, 1 phase, 3 wire, when 5th jaw is installed  
(Derived from 3 phase, 4 wire system)

**METER SOCKET RATING**  
200 AMPS continuous

**SUITABLE ONLY FOR USE AS SERVICE EQUIPMENT.**

**FOR OVERHEAD OR UNDERGROUND SERVICE**  
**USE 60/75° COPPER OR ALUMINUM CONDUCTOR**  
terminals A1, B1, N1, N2, N3, G1, A2 AND B2

**GENERAL INFORMATION**  
Remove twist cuts from dead front only where breakers will be installed. All openings must be filled with breakers or filler plates.

Circuit breakers overload trip position is indicated by handle position midway between ON and OFF.  
To reset, move handle to OFF position and then to ON.

For installation in accordance with all local electrical codes and/or the National Electrical Code.

Sum of QP, QT, QPF, QE, QAF, QG, QW breakers not to exceed 80 AMPS per stub.

Any unused neutral positions may be used as ground conductors.

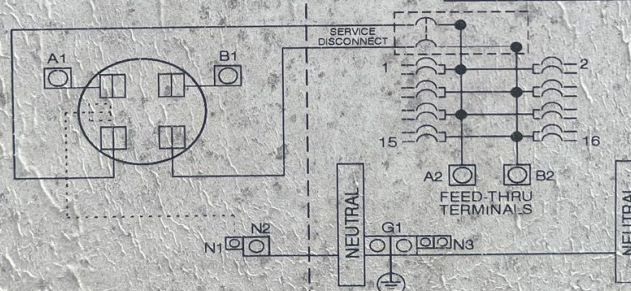
| Terminal                 | Wire Size               | Torque    |
|--------------------------|-------------------------|-----------|
| A1, B1                   | 350kcmil - #6           | 275 lb-in |
| N1                       | #2 - #3                 | 50 lb-in  |
|                          | #4 - #6                 | 45 lb-in  |
|                          | #8                      | 40 lb-in  |
|                          | #10 - #14               | 35 lb-in  |
| N2                       | 250kcmil - #6           | 275 lb-in |
| A2, B2, G1               | 250kcmil - #6           | 275 lb-in |
| N3                       | 110 - #14               | 120 lb-in |
| Branch Breaker Terminals | See Markings on Breaker |           |
| Neutral Bar              | #10 - #14 CU            | 120 lb-in |
|                          | #10 - #12 AL            | 20 lb-in  |
|                          | #8                      | 25 lb-in  |
|                          | #6 - #4                 | 35 lb-in  |
| Ground Conductors Only   | (2) or (3)<br>#14 AWG   | 20 lb-in  |
|                          | (2) #12 - #10<br>AWG    | 20 lb-in  |

### ACCESSORIES

Filler Plate - EC0F3  
5th Jaw Accessory - EMCSJ  
Lay-in Lug Neutral Kit - ECLLK1  
Interlock Kit - ECSBP05, ECSBP07

IF HUB IS REQUIRED, THE CATALOG NUMBERS LISTED BELOW MAY BE USED ON THIS ENCLOSURE

| TRADE SIZE (IN) | CATALOG NUMBER |
|-----------------|----------------|
| 1-1/4"          | EC38507        |
| 1-1/2"          | EC38508        |
| 2"              | EC38509        |
| 2-1/2"          | EC38600        |



**SHORT CIRCUIT CURRENT RATING** (Without meter not included in short circuit rating)  
This panelboard has a short circuit current rating of 22,000 AMPS RMS symmetrical, 120/240 VAC. The correct branch breakers and main branch breaker size combinations to be used for various short circuit current levels are listed in the tabulation below. Any circuit breaker installed, replaced or added in this panelboard must be manufactured by Siemens and must be of the correct type as indicated in the tabulation below.

| MAIN BREAKER WHEN THE MAIN BREAKER IS | BRANCH BREAKER AND THE BRANCH BREAKERS INSTALLED ARE SIEMENS TYPE | THEN THE MAXIMUM SHORT CIRCUIT RATING IN RMS SYMMETRICAL AMPERES, 120/240 VOLTS AC IS |
|---------------------------------------|---|---|
| QNE1                                  | QP, QT, QPF, QPH, QE, QEH, QAF, QAEH, QNR, QPH, QG, QW, HQP       | 22,000  |

\* NATIONAL ELECTRICAL CODE IS A REGISTERED TRADEMARK OF NATIONAL FIRE PROTECTION ASSOCIATION  
© 2006 Copyright Siemens Energy & Automation, Inc.

Siemens Energy & Automation, Inc. Alpharetta, Georgia U.S.A. J2 4099605 Rev.0

**IMPORTANT** DO NOT ALLOW PETROLEUM BASED (HYDROCARBON) SPRAYS, CHEMICALS, SOLVENTS OR ANY PAINT TO CONTACT ANY OF THE COMPONENTS. PETROLEUM BASED CHEMICALS CAN CAUSE DEGRADATION OF ELECTRICAL INSULATING MATERIALS.

MANUFACTURED DATE: 11/13/07



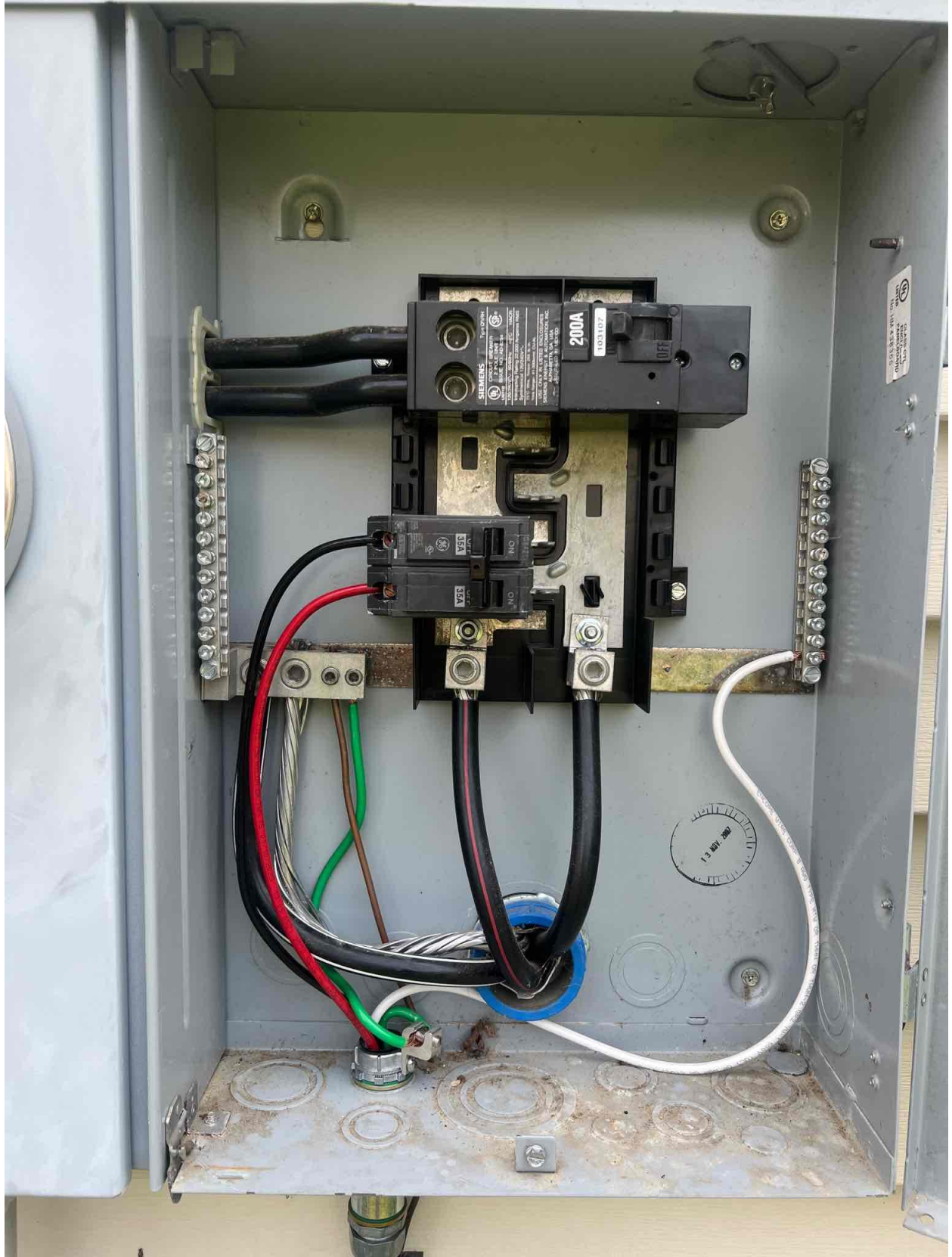
200A

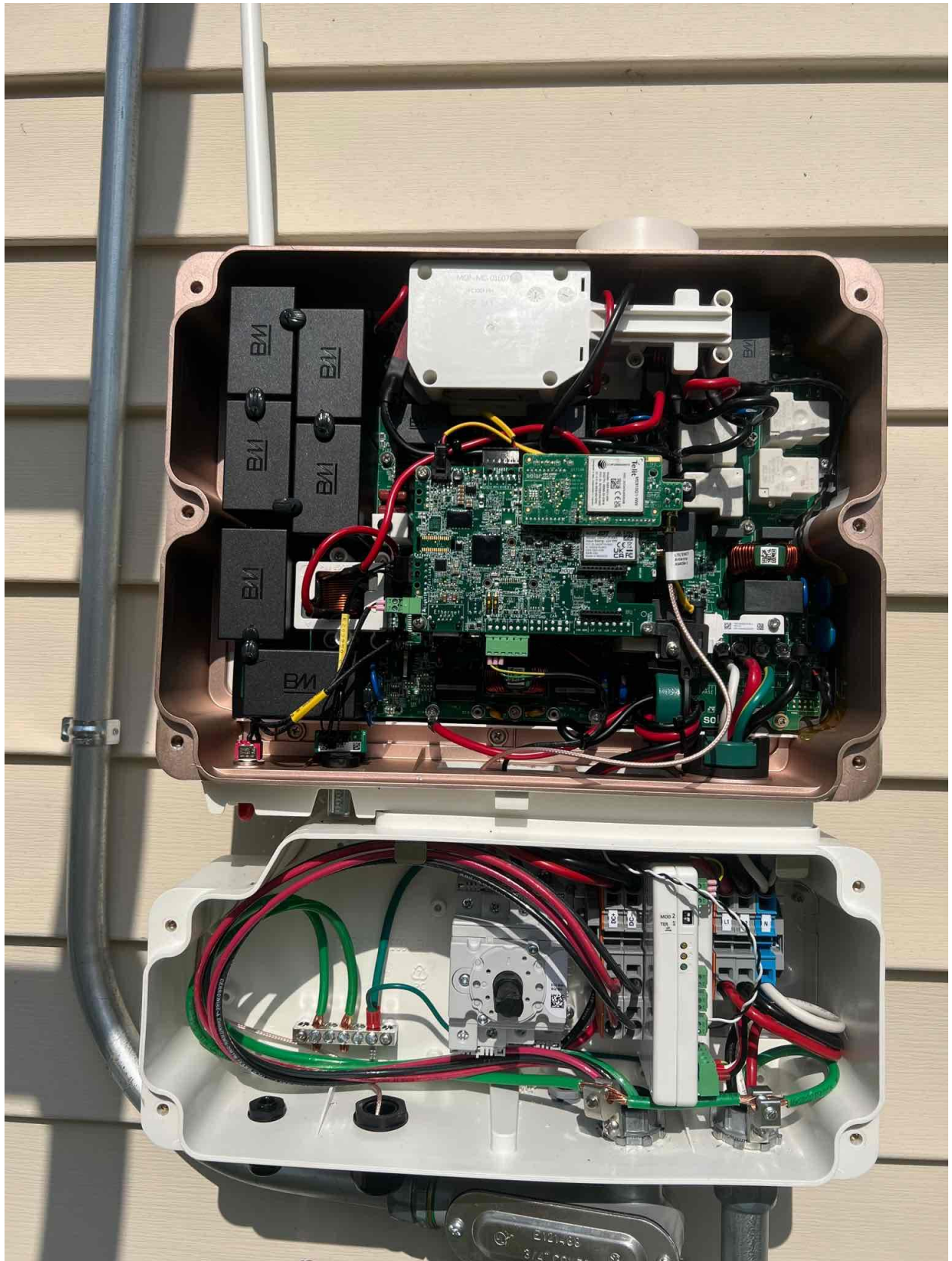
103107

OFF

GE 35A OFF ON  
GE 35A OFF ON









**solar**edge

Cellular Plug-in 5y plan, SetApp, Resi, SP4, US

PN: CELL-B-R05-US-S-Z



SN: SV4022-17090294D-76



Made in Vietnam

Qty: 1

ICCID: 8901882004770053813F



Operation will start on the earlier of:  
- 1st successful data (first transmission)  
- Date: 08-Oct-22

Made in Vietnam



**solar edge** SE6000H-US  
**Grid Support Utility Interactive  
Non-Isolated Photovoltaic Inverter**

Operating Voltage Range 270 - 480Vdc  
Max Input Current 16.5A<sub>dc</sub>  
Max Continuous Output Power 5000W<sub>ac</sub> @ 208V 6000W<sub>ac</sub> @ 240V  
Voltage Min - Nom - Max 183 - 208 - 228V<sub>ac</sub>  
211 - 240 - 264V<sub>ac</sub>  
Max Continuous Output Current 24A<sub>ac</sub> @ 208V 25A<sub>ac</sub> @ 240V  
Max Output Fault Current 72A<sub>ac</sub>  
Max Utility Backfeed Current 0A<sub>ac</sub>  
Frequency Min - Nom - Max 59.3 - 60.0 - 60.5Hz  
Output Power Factor +/- 0.95 - 1  
Max Ambient Temperature 60 C

Enclosure IP65 / Type 3R  
With integrated ground fault protection per NEC 690.35 (C)  
Type 1 Photovoltaic Arc - Fault Circuit - Protection  
COMPLIES WITH SUPPLEMENTAL INTERCONNECTION REQUIREMENTS  
WI - FI Password: p7H3YtMx  
Activation: IXOC ghX6 NP21 P7PX 9GDS 9f4I IZs -

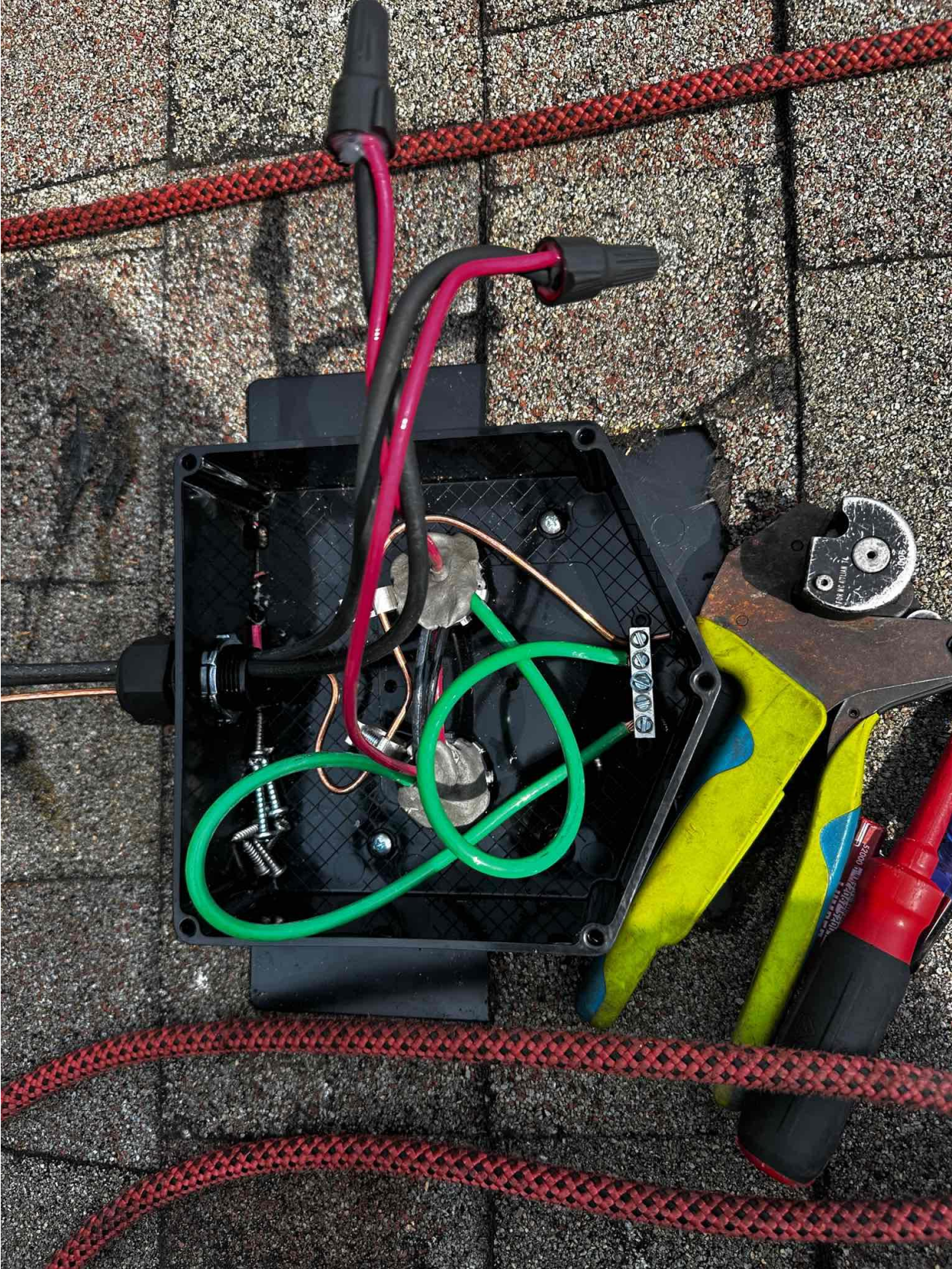
WIFI MAC:  
84:D6:C5:42:DA:7B  
ZigBee MAC:

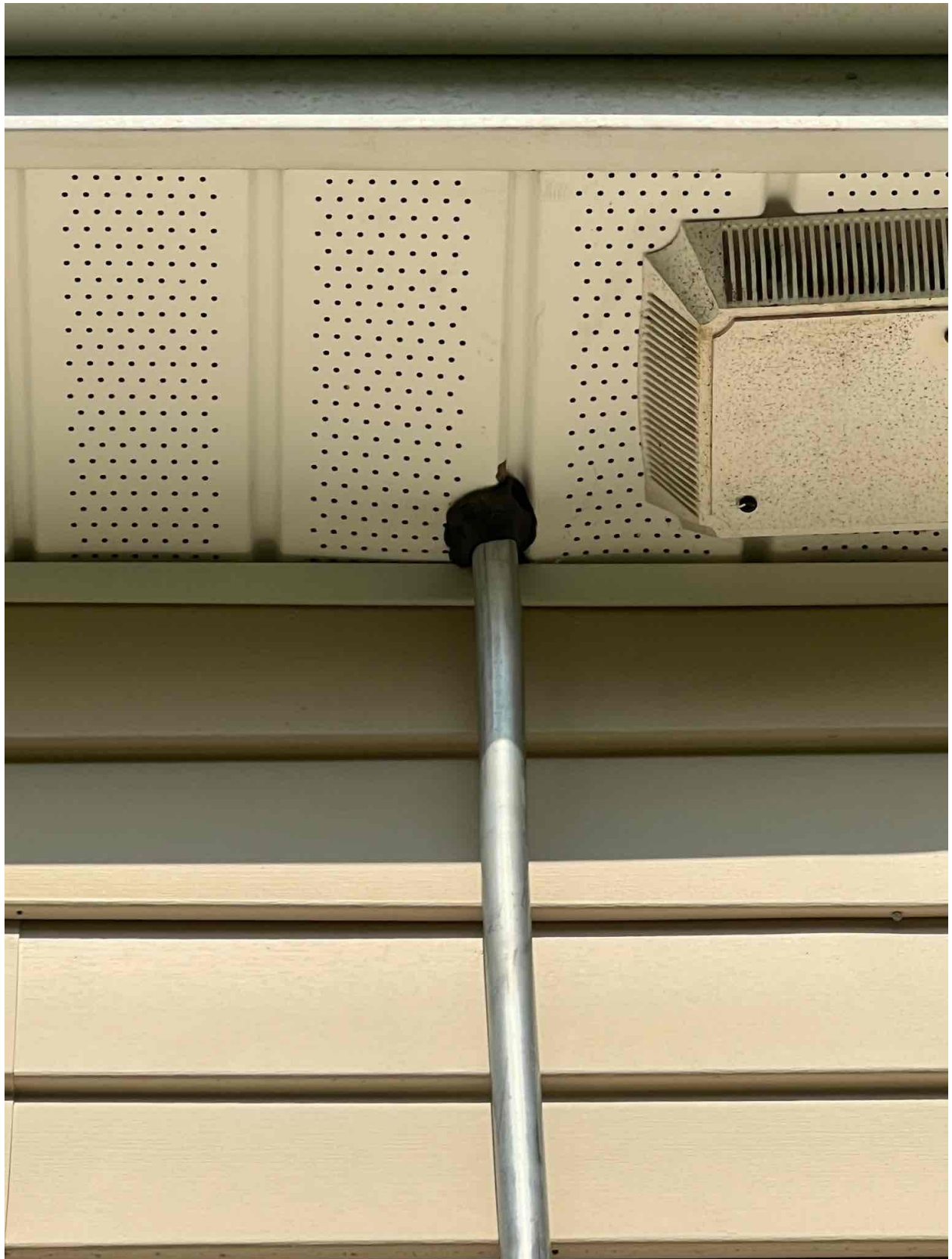


PN: SE6000H - US000BNI4  
SN: SM4822 - 074112FB6 - 6A

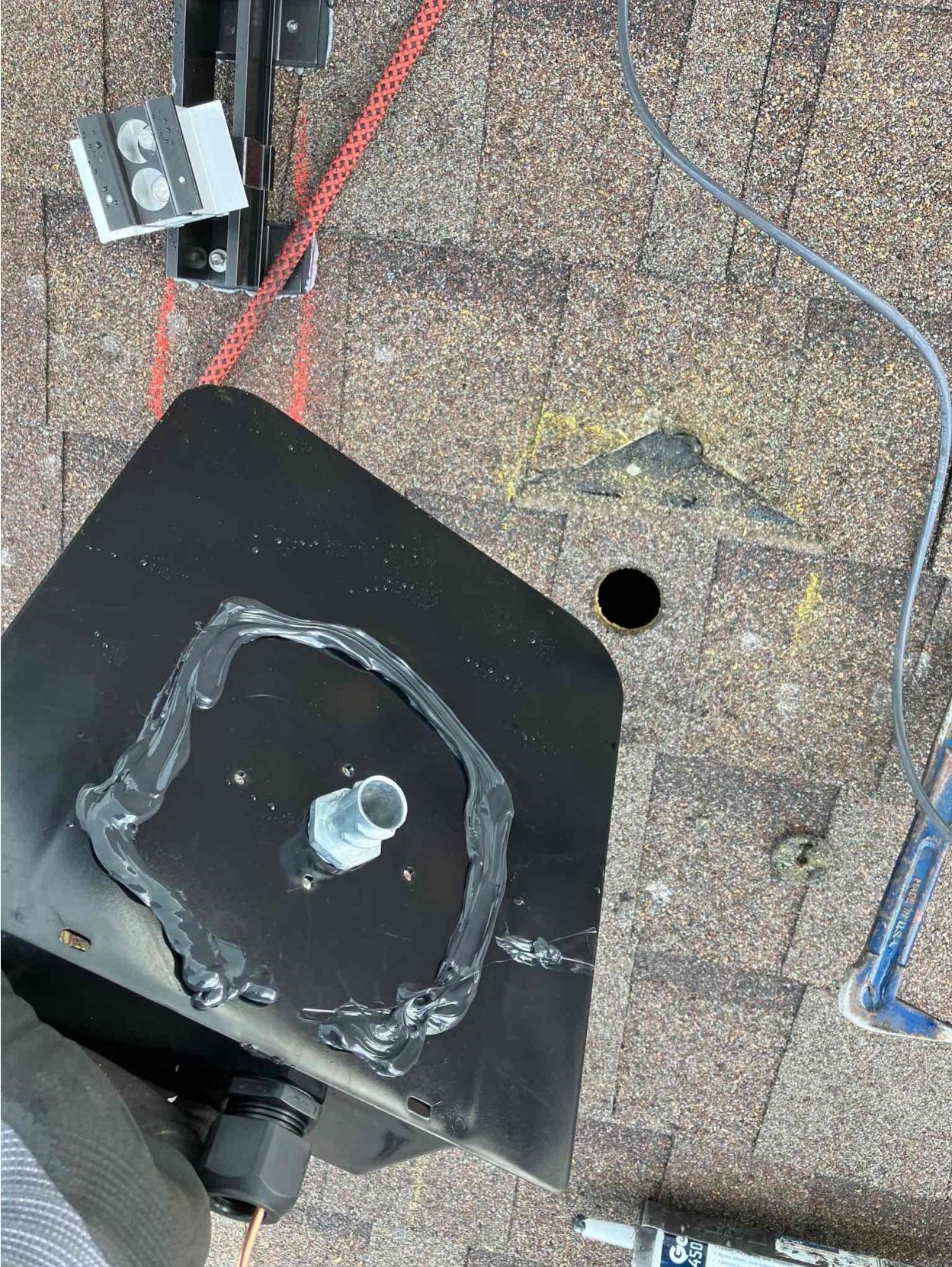














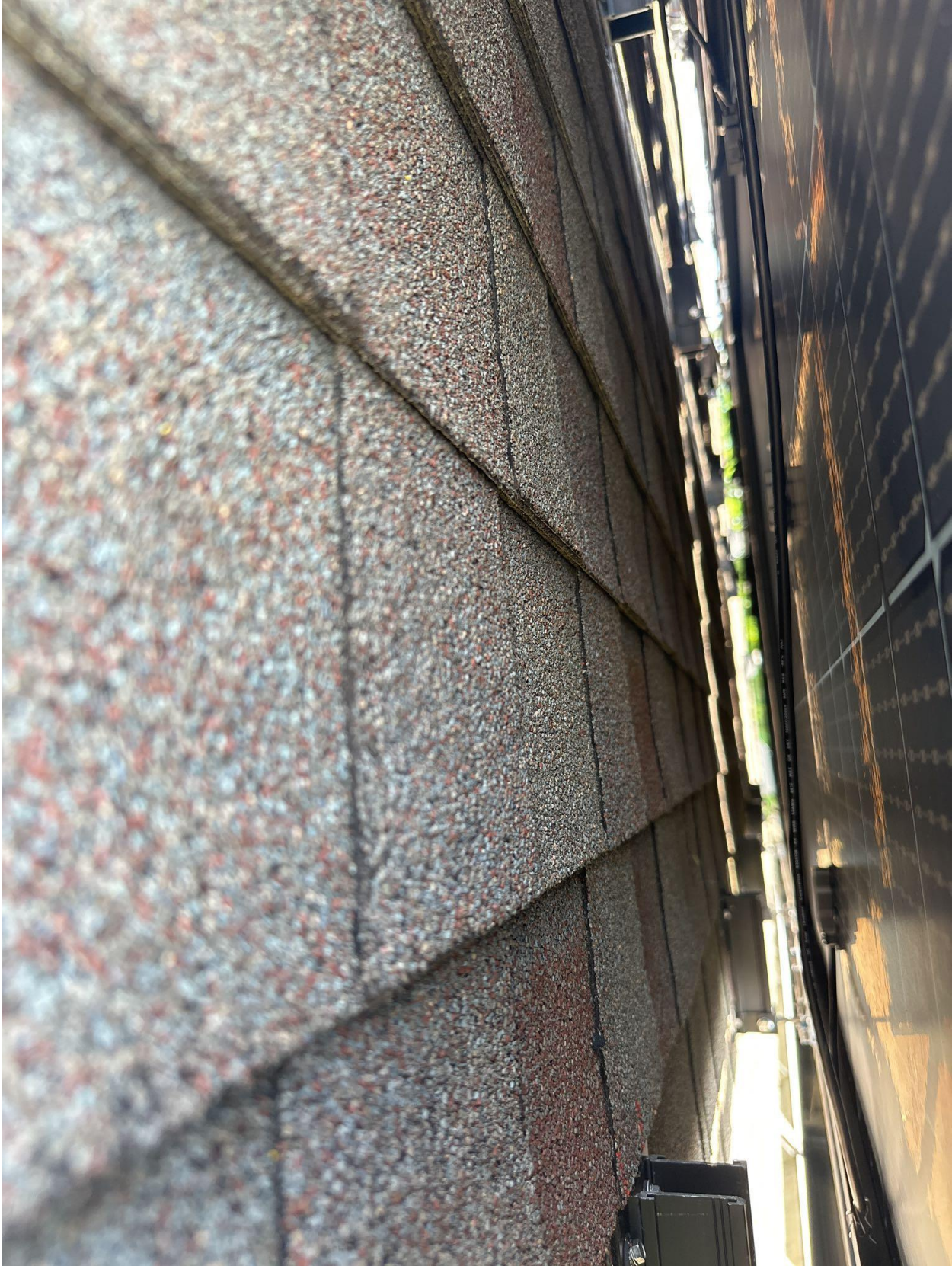






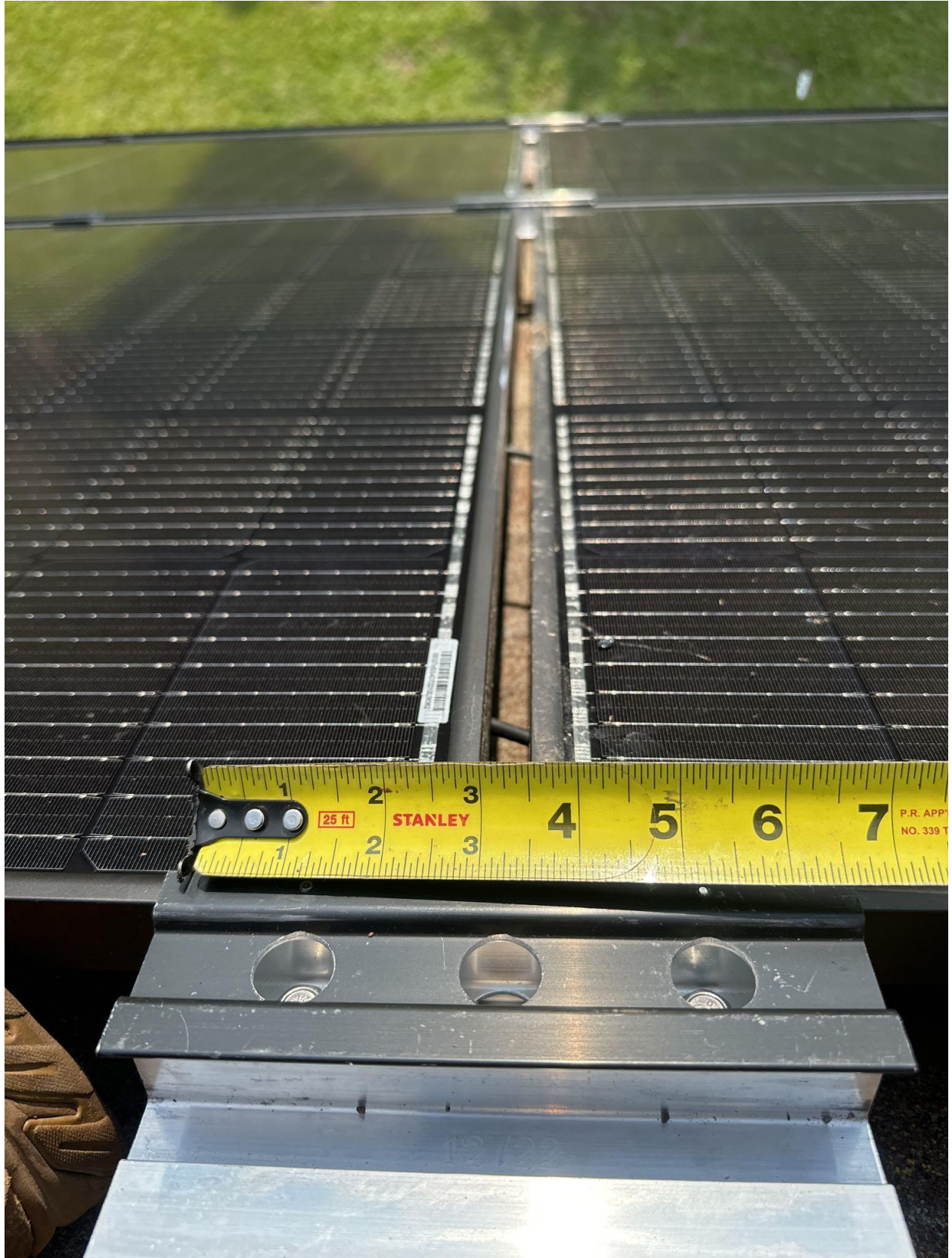














SEG Solar Inc  
Add: 973 Isom Road, San Antonio,  
TX 78216 USA  
www.segsolar.com  
System Fire Class Rating: See installation manual  
Made in Thailand

Module Type: SEG-405-BMD-HV  
Rated Maximum Power/Front: 405W  
Power Sorting: (0, +4.99)  
Current at Pmax: Front: 13.16A  
Voltage at Pmax: Front: 30.93V  
Short-Circuit Current: Front: 13.70A  
Open-Circuit Voltage: Front: 37.22V  
Weight: 21.5kg  
Dimension: 1722 x 1134 x 30mm  
Maximum System Voltage: 1500V  
Maximum Series Fuse Rating: 25A  
Cell Technology: Mono-Si  
Fire Rating: Type 1

Power Production Tolerance: ±3%  
Short-circuit Current Tolerance: ±4%  
Open-circuit Voltage Tolerance: ±2%  
All technical data measured at STC:  
1000W/m<sup>2</sup>, AM1.5, 25°C  
PV Module Classification: Class II













