









APR

R2021

22 N

LP

APA

APR

R2021

22 S

LP

APA



GENIUM



0001EB93D2

FCC ID: S188MT, IC: 8840 AMT, MODEL: AMT

LEVEL 2

CL200 240V 3W TYPE C2M 30TA 1.0Kh

ZZZ 253150 H67

CA 0.5
FM25
60Hz



DUKE ENERGY PROGRESS

322 668 255

F120529

OpenWay
by ardo

11/18









PHOTOVOLTIC POWER SOURCE

CAUTION
CAUTION: SOLAR ELECTRIC SYSTEM CONNECTED

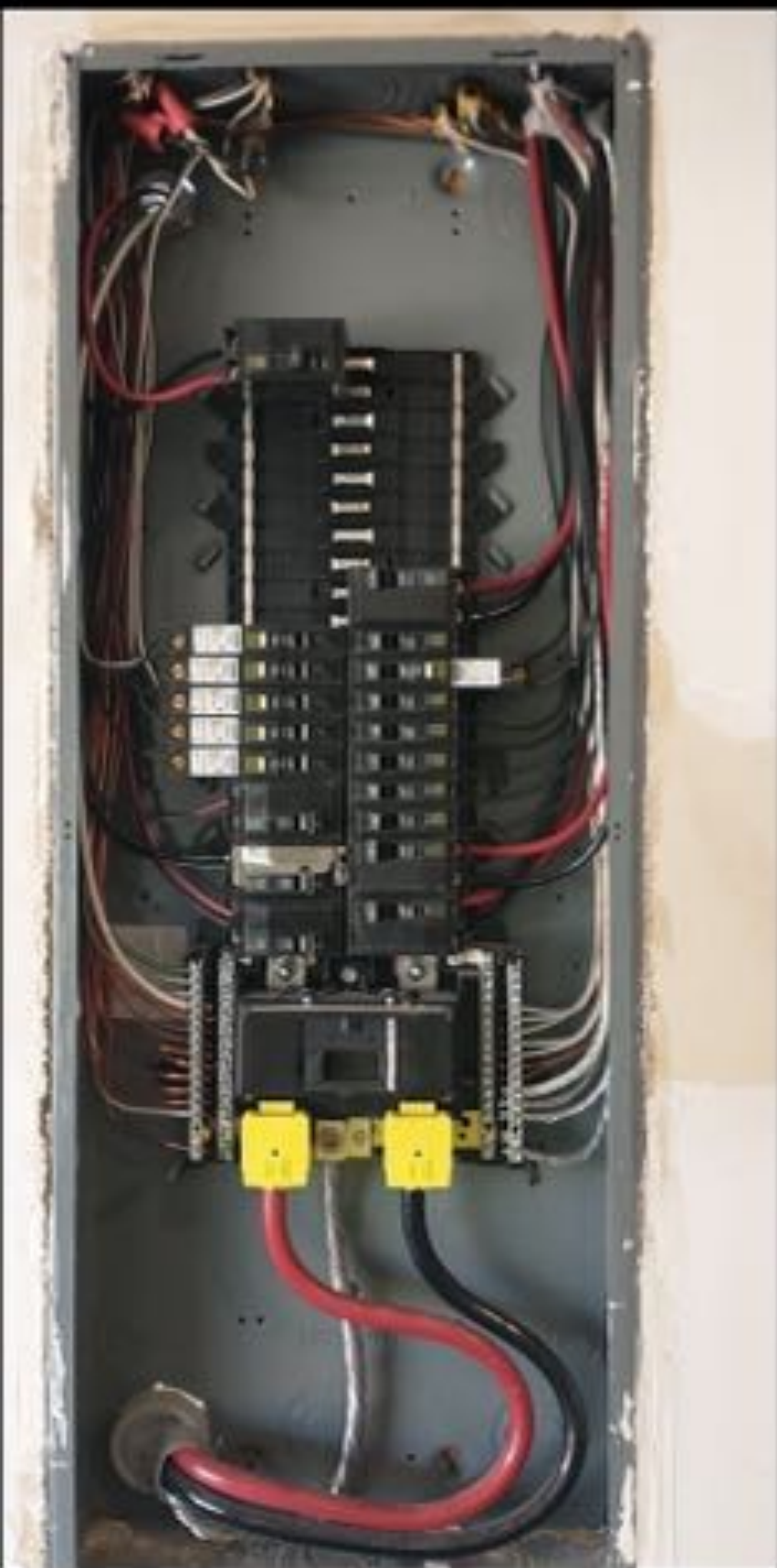
SOLAR	
DC/AC	
1	
2	
3	
4	
5	
6	
7	
8	
9	
10	
11	
12	
13	
14	
15	
16	
17	
18	
19	
20	
21	
22	
23	
24	
25	
26	
27	
28	
29	
30	
31	
32	
33	
34	
35	
36	
37	
38	
39	
40	
41	
42	
43	
44	
45	
46	
47	
48	
49	
50	
51	
52	
53	
54	
55	
56	
57	
58	
59	
60	
61	
62	
63	
64	
65	
66	
67	
68	
69	
70	
71	
72	
73	
74	
75	
76	
77	
78	
79	
80	
81	
82	
83	
84	
85	
86	
87	
88	
89	
90	
91	
92	
93	
94	
95	
96	
97	
98	
99	
100	

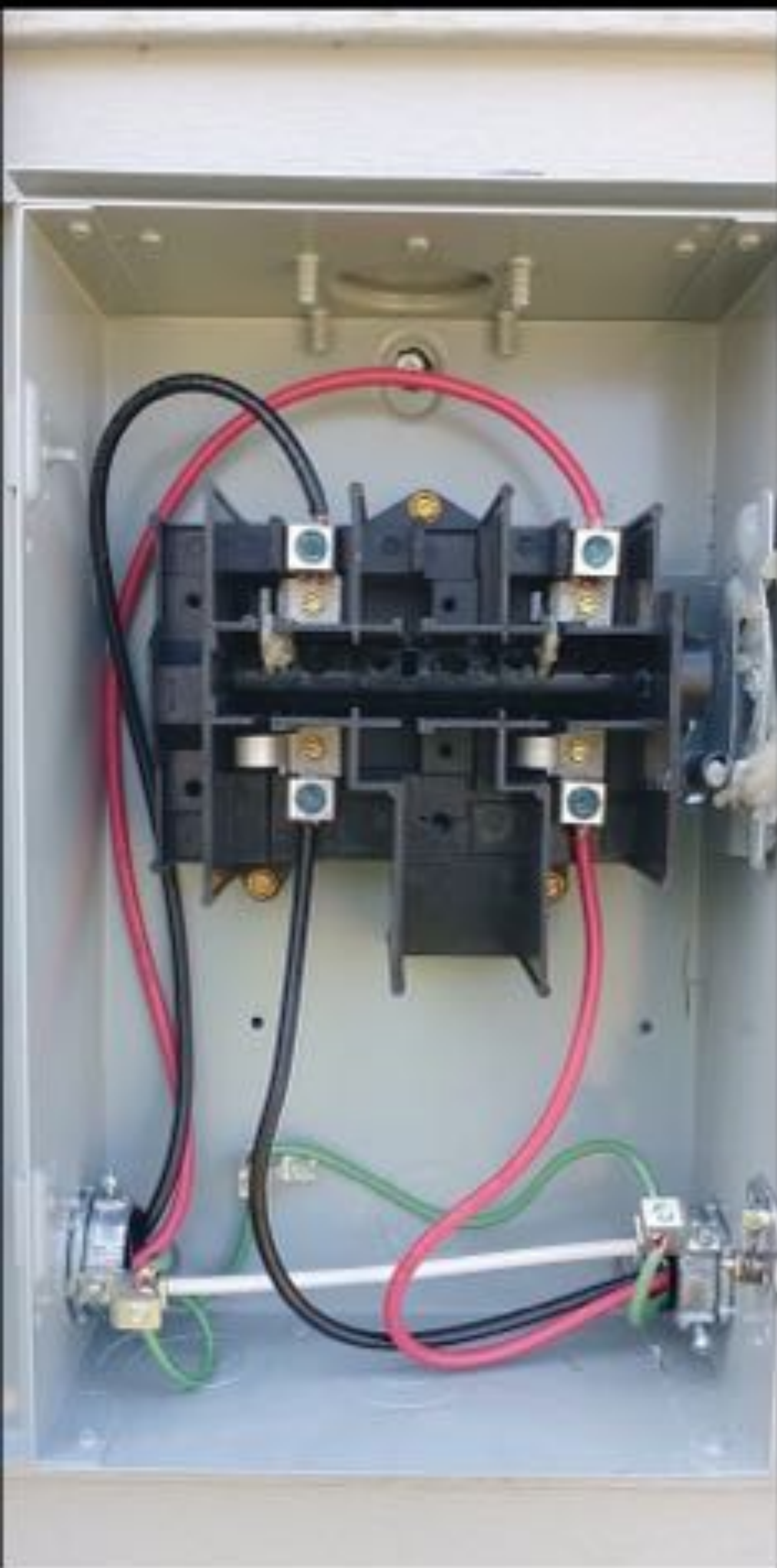
Panel of electrical components including a main breaker, a row of 10 standard breakers, a row of 10 solar breakers, and a row of 10 AC breakers. A red label is visible on the left side of the panel.


Open
Circuit









solar  **SE6000H - US**
**Grid Support Utility Interactive
Non-Isolated Photovoltaic Inverter**

Operating Voltage Range	275 - 600VAC
Max Input Current	18.5A _{AC}
Max Continuous Output Power	3000W @ 200V 3000W @ 240V
Voltage Min - Nom - Max	113 - 240 - 250V _{AC} 277 - 240 - 254V _{AC}
Max Continuous Output Current	24A @ 200V 25A @ 240V
Max Output Fault Current	70A _{AC}
Max Utility Backfeed Current	5A _{AC}
Frequency Min - Nom - Max	59.5 - 60.5 - 61.0Hz
Output Power Factor	±1 - 0.99 - 1
Max Ambient Temperature	65°C
Enclosure	IP65 / Type 3R
With integrated ground fault protection per NEC 690.26 (C) Type I Residual Arc-Fault Circuit-Interrupter	

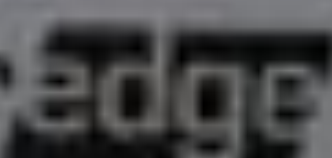
Wi-Fi Password: g16RBCq42
Activation: 31344 USAAC 19v3 EB0H 407x 7W40 ILA =

WiFi MAC:
84:DB:CB:4B:7D:48
ZigBee MAC:



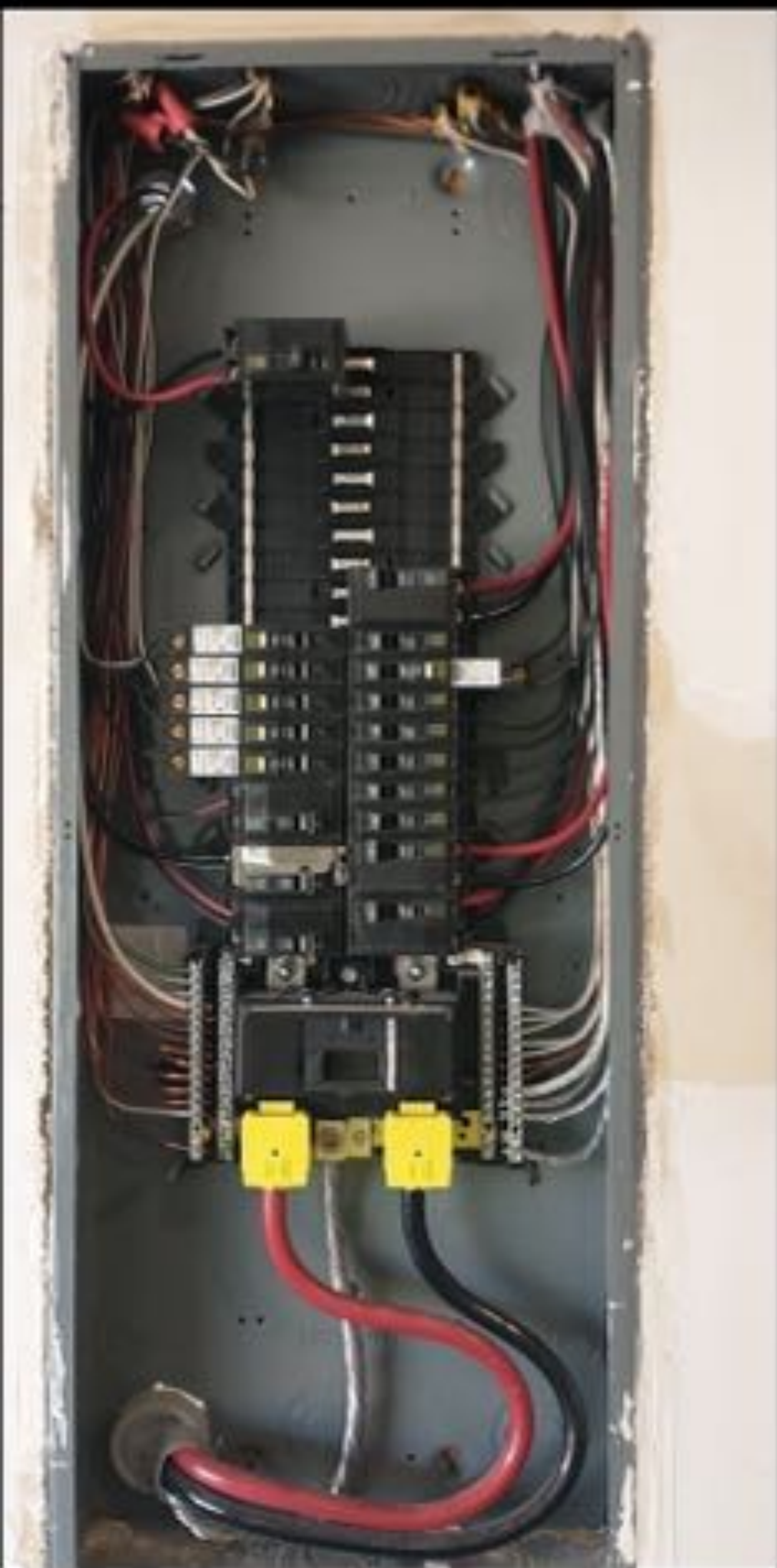
PN: SE6000H - US5NBBL14
SN: SVD323 - 075010F14 - 99



solar 



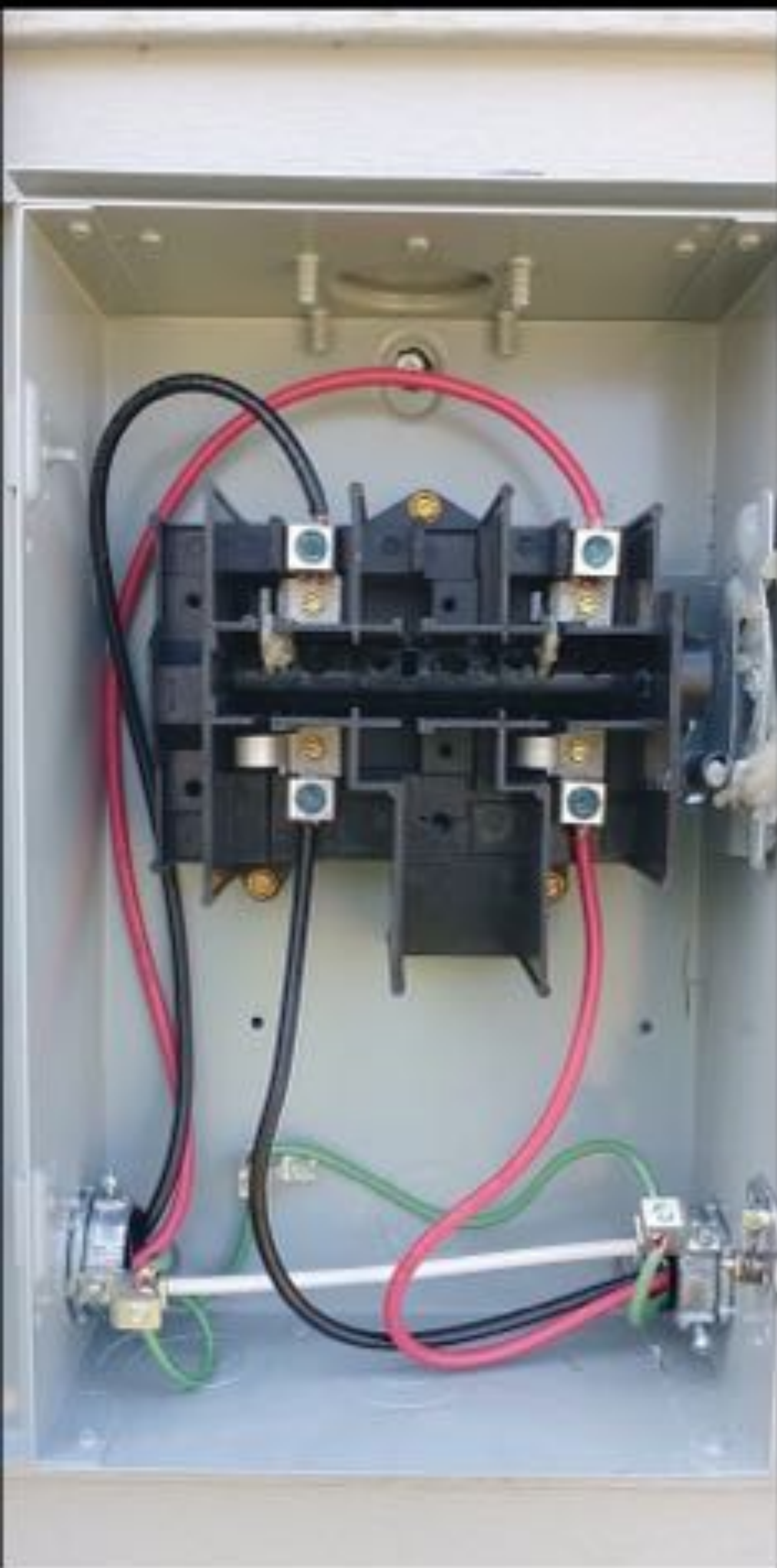












**KLEIN
TOOLS**
CL120

Ω OFF

2750A \sim

200V
400A \sim

V \overline{m}

V \sim

OFF

NCV



RANGE

MAX

2000 Counts
400A AC Digital Clamp Meter

18.16

COM



VD





Ederson Dos Santos 20 pounds
371 Kotata Ave
Bunnwell, NC 28323

5/24/23
Terry
Jordan
David
Et al.





3
7
1

















Ederson Dos Santos 20 pounds
371 Kotata Ave
Bunnwell, NC 28323

5/24/23
Terry
Jordan
David
Et al.





PHOTOVOLTAIC POWER SOURCE



3
7
1





CAUTION
CAUTION: SOLAR ELECTRIC SYSTEM CONNECTED

SOLAR	
DC/AC	
1	
2	
3	
4	
5	
6	
7	
8	
9	
10	
11	
12	
13	
14	
15	
16	
17	
18	
19	
20	
21	
22	
23	
24	
25	
26	
27	
28	
29	
30	
31	
32	
33	
34	
35	
36	
37	
38	
39	
40	
41	
42	
43	
44	
45	
46	
47	
48	
49	
50	
51	
52	
53	
54	
55	
56	
57	
58	
59	
60	
61	
62	
63	
64	
65	
66	
67	
68	
69	
70	
71	
72	
73	
74	
75	
76	
77	
78	
79	
80	
81	
82	
83	
84	
85	
86	
87	
88	
89	
90	
91	
92	
93	
94	
95	
96	
97	
98	
99	
100	

Panel with circuit breakers and busbars. Includes a red emergency stop button at the top left.

Open
Access



**KLEIN
TOOLS**
CL120

Ω OFF

2750A \sim

200V
400A \sim

V \overline{m}

V \sim

OFF

NCV



RANGE

MAX

2000 Counts
400A AC Digital Clamp Meter

18.16

COM



VD







**KLEIN
TOOLS**
CL120

Ω OFF

2720A~

200V
400A~

V=

V~

OFF

HDV



RANGE

MAX

2000 Count

400A AC Digital Clamp Meter



COM



VD

CAUTION

2000V



**KLEIN
TOOLS**
CL120

Ω OFF

2720A~

200V
400A~

V=

V~

OFF

HDV



RANGE

MAX

2000 Count

400A AC Digital Clamp Meter



COM



VD

CAUTION: 1000V



173



Ederson Dos Santos 20 pounds
371 Kotata Ave
Bunnwell, NC 28323

5/24/23
Terry
Jordan
David
Et al.





3
7
1



CAUTION

WARNING

ATTENTION

173





PHOTONVOLTAIC POWER SOURCE














solar  **PHOTOVOLTAIC RAPID SHUTDOWN SYSTEM**

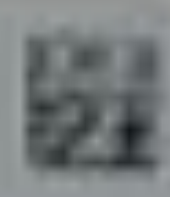
Model: SR01
Voltage: 120V
Power: 1500W
Frequency: 60Hz
Phase: Single Phase
Grounding: Grounded
Temperature: -20°C to 60°C
Humidity: 5% to 95%
IP Rating: IP65
Dimensions: 150mm x 150mm x 150mm
Weight: 0.5kg

Model: SR01
Voltage: 120V
Power: 1500W




PHOTOVOLTAIC RAPID SHUTDOWN SYSTEM
1 800 878 2838

solar 



PHOTOVOLTAIC RAPID SHUTDOWN SYSTEM

solar 



UL LISTED
UL 1741
UL 1741-1
UL 1741-2



ETL
LISTED
UL 1741

Model: SR01






173







solar  **SE6000H - US**
**Grid Support Utility Interactive
Non-Isolated Photovoltaic Inverter**

Operating Voltage Range	275 - 600VAC
Max Inlet Current	18.5A AC
Max Continuous Output Power	3000W @ 200V 3000W @ 220V
Voltage Min - Nom - Max	183 - 240 - 250V AC 277 - 240 - 254V AC
Max Continuous Output Current	24A @ 200V 25A @ 220V
Max Output Fault Current	70A AC
Max Utility Backfeed Current	5A AC
Frequency Min - Nom - Max	59.5 - 60.5 - 61.5 Hz
Output Power Factor	±1 - 0.99 - 1
Max Ambient Temperature	65 °C
Enclosure	IP65 / Type 3R
With integrated ground fault protection per NEC 690.26 (C) Type I Residual Arc-Fault Circuit-Interrupter	


Wi-Fi Password: g16RBCq42
Activation: 31344 USAAC 19v3 EB0H 407x 7W40 ILA =

WiFi MAC:
84:DB:CB:4B:7D:48
ZigBee MAC:



PN: SE6000H - US SNBBL14
SN: SVD323 - 075010F14 - 99



solar 







PHOTONVOLTAIC POWER SOURCE







