





























# SIEMENS

## Outdoor Combination Metering

Order Number  
**MC4040B1200SECW**

Product  
**Type 3R**

### Panelboard Rating

200 Amps Max  
100040 Volts - 1 phase, 3 wire  
200Y/120 Volts - 1 phase, 3 wire  
(Derived from 3 phase - 4 wire system)

### Wiring Socket Rating

200 Amps Continuous

### Suitable Only For Use As Service Equipment

### For Overhead or Underground Service

### Use 60/75°C Copper or Aluminum Conductor in

Terminals A1, B1, A2, B2, N1, and N2

1/2 in terminals A and B have wire connections suitable for underground service entry as shown in the wiring diagram. Terminals N1 and N2 for overhead entry require service but are enclosed in a separate panel.

Grounding means listed terminals may be used to terminate equipment grounding wires in the combination. However, for equipment ground be terminated.

### General Information

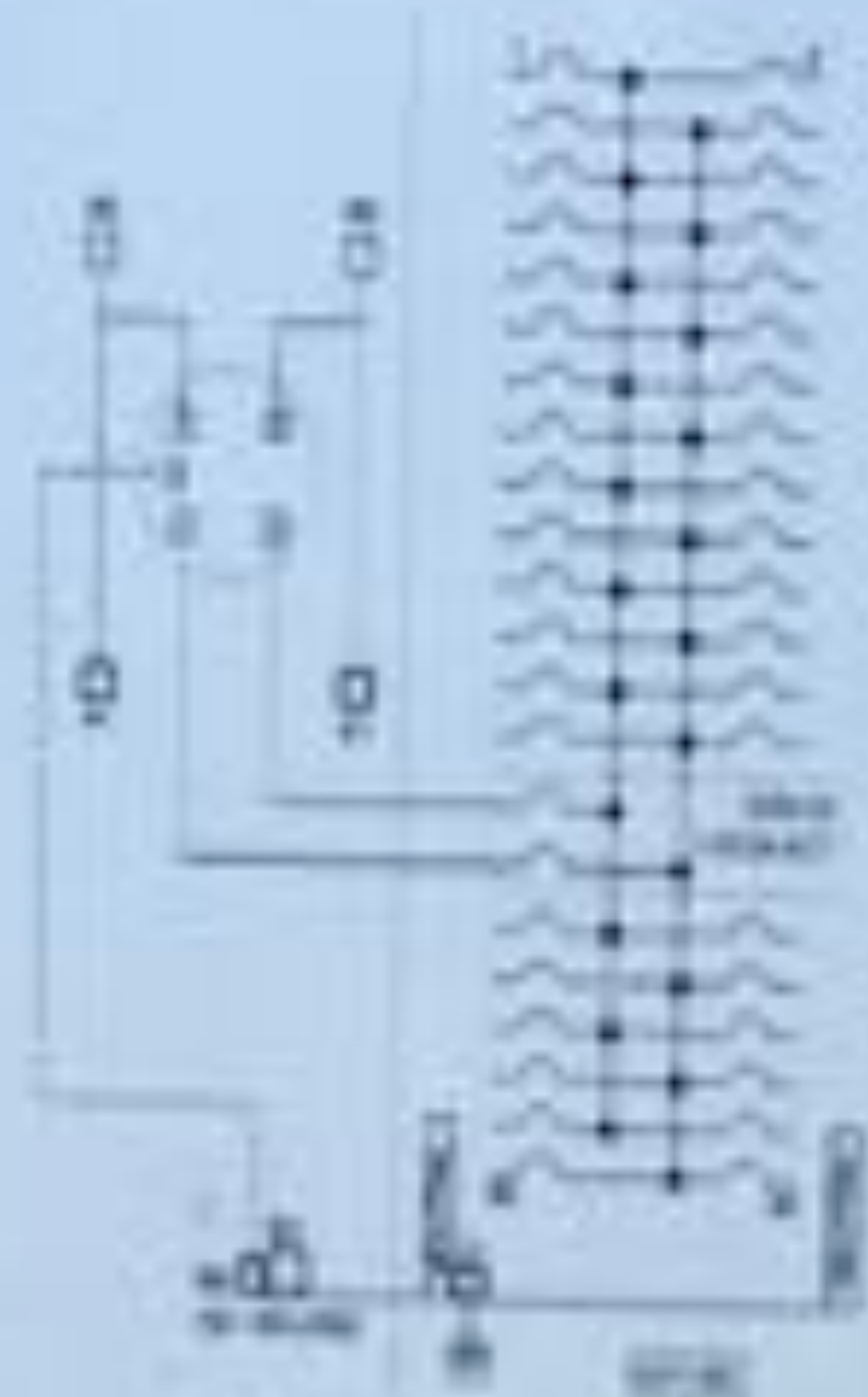
Ground means enclosure is inherently grounded. Switch position indicator between On and Off. Terminal wires inside to OFF position than terminals. For information on Qualification of Personnel with all work electrical work refer to the National Electrical Code (NEC).

### Accessories

For Panel - 02024  
For Air Assembly - 02025  
Mechanical Interlock - 02026  
For Top - 02027  
Wiring Socket Lug - 02028  
Grounding Bar - 02029  
Mounting Kit - 02030 and 02031

Terminal	Wire Size	Current
A1, B1, A2, B2	1/2 in. - 1/4 in.	100 A
N1, N2	1/2 in. - 1/4 in.	100 A
Grounding	1/2 in. - 1/4 in.	100 A
Terminal	Wire Size	Current
A1, B1, A2, B2	1/2 in. - 1/4 in.	100 A
N1, N2	1/2 in. - 1/4 in.	100 A
Grounding	1/2 in. - 1/4 in.	100 A

Terminal	Wire Size	Current
A1, B1, A2, B2	1/2 in. - 1/4 in.	100 A
N1, N2	1/2 in. - 1/4 in.	100 A
Grounding	1/2 in. - 1/4 in.	100 A



**SAFETY (NEC 404.2) WARNING:** Before working on any electrical equipment, the power must be locked out and tagged. Follow the safety procedures in the National Electrical Code (NEC) and the manufacturer's instructions. Do not touch any exposed conductive parts. Use proper safety techniques when working on electrical equipment. Always use the proper safety techniques when working on electrical equipment. Always use the proper safety techniques when working on electrical equipment.

Part Number	Quantity	Description
02024	1	For Panel - 02024
02025	1	For Air Assembly - 02025
02026	1	Mechanical Interlock - 02026
02027	1	For Top - 02027
02028	1	Wiring Socket Lug - 02028
02029	1	Grounding Bar - 02029
02030	1	Mounting Kit - 02030
02031	1	Mounting Kit - 02031

© 2004 Siemens AG. All rights reserved. Printed in the USA.  
100040 Volts - 1 phase, 3 wire  
200Y/120 Volts - 1 phase, 3 wire  
200 Amps Max  
100040 Volts - 1 phase, 3 wire  
200Y/120 Volts - 1 phase, 3 wire  
200 Amps Max  
100040 Volts - 1 phase, 3 wire  
200Y/120 Volts - 1 phase, 3 wire  
200 Amps Max

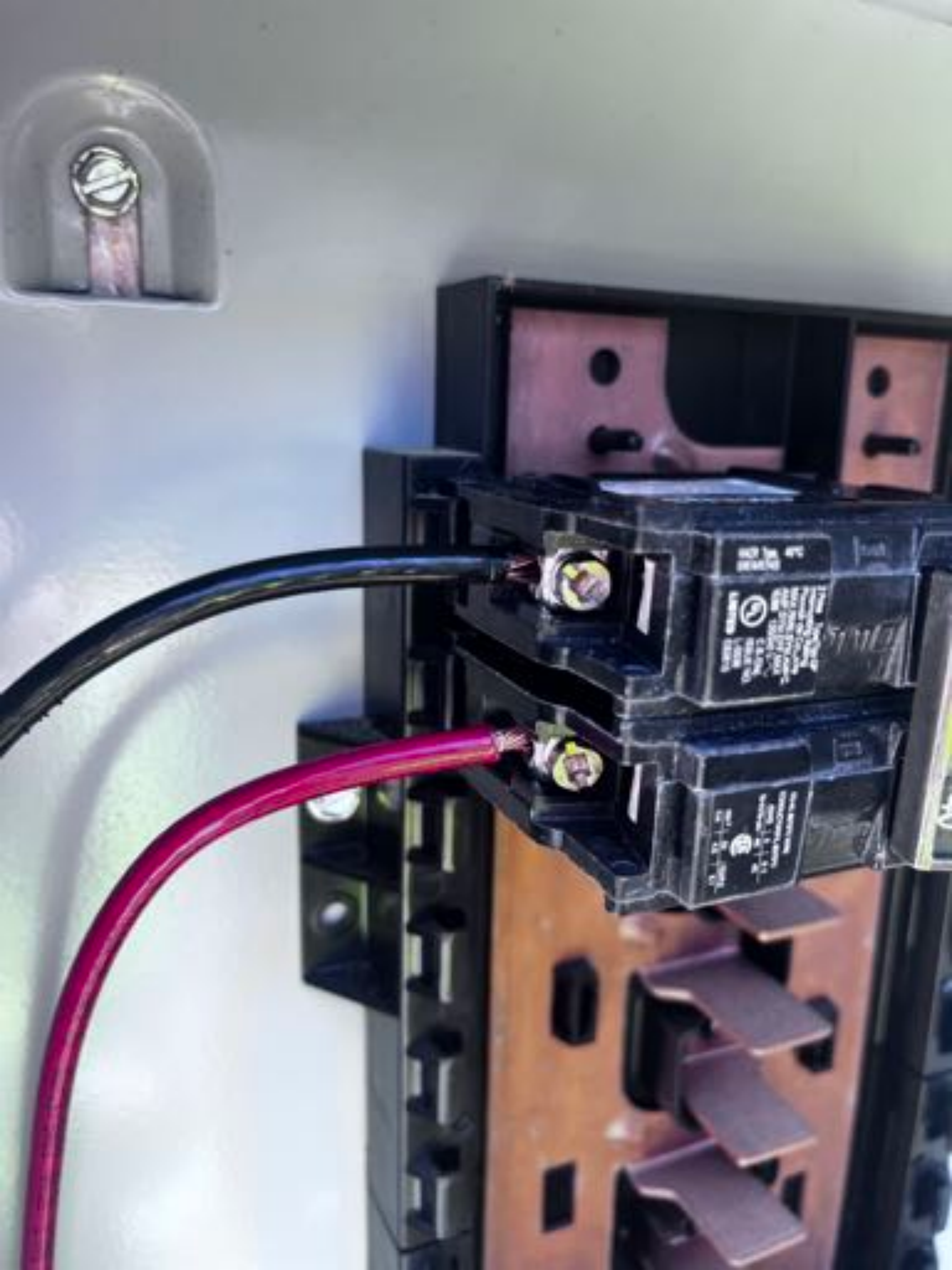












100% 40°C  
100% 100%  
100% 100%  
100% 100%  
100% 100%  
100% 100%

100% 100%  
100% 100%  
100% 100%



Handwritten notes on the left door:  
Inch Pump  
WV  
DO. water  
Rip  
miller 100  
A/C





The Best  
Service in the World  
911-1111  
12345  
67890  
10111  
12123  
13145  
14167  
15189  
16201  
17223  
18245  
19267  
20289  
21301  
22323  
23345  
24367  
25389  
26401  
27423  
28445  
29467  
30489  
31501  
32523  
33545  
34567  
35589  
36601  
37623  
38645  
39667  
40689  
41701  
42723  
43745  
44767  
45789  
46801  
47823  
48845  
49867  
50889  
51901  
52923  
53945  
54967  
55989  
56001  
57023  
58045  
59067  
60089  
61101  
62123  
63145  
64167  
65189  
66201  
67223  
68245  
69267  
70289  
71301  
72323  
73345  
74367  
75389  
76401  
77423  
78445  
79467  
80489  
81501  
82523  
83545  
84567  
85589  
86601  
87623  
88645  
89667  
90689  
91701  
92723  
93745  
94767  
95789  
96801  
97823  
98845  
99867  
00889  
01901  
02923  
03945  
04967  
05989  
06001  
07023  
08045  
09067  
10089  
11101  
12123  
13145  
14167  
15189  
16201  
17223  
18245  
19267  
20289  
21301  
22323  
23345  
24367  
25389  
26401  
27423  
28445  
29467  
30489  
31501  
32523  
33545  
34567  
35589  
36601  
37623  
38645  
39667  
40689  
41701  
42723  
43745  
44767  
45789  
46801  
47823  
48845  
49867  
50889  
51901  
52923  
53945  
54967  
55989  
56001  
57023  
58045  
59067  
60089  
61101  
62123  
63145  
64167  
65189  
66201  
67223  
68245  
69267  
70289  
71301  
72323  
73345  
74367  
75389  
76401  
77423  
78445  
79467  
80489  
81501  
82523  
83545  
84567  
85589  
86601  
87623  
88645  
89667  
90689  
91701  
92723  
93745  
94767  
95789  
96801  
97823  
98845  
99867  
00889









solar **edge**

### StorEdge Connection Unit



Max DC Voltage (PV/Battery)	480 Vdc
Max DC Current (PV)	62 Adc
Max DC Power (PV)	23.2 kWdc
Max Continuous DC Current (Battery)	31 Adc
Max Continuous DC Power (Battery)	11.6 kWdc
Max AC Voltage	264 Vac
AC Single Phase Frequency	50/60 Hz
Max AC Current (Grid)	48 Aac

For more details refer to the installation guide

Patent marketing notice: see [WWW.SOLAREEDGE.COM/patent](http://WWW.SOLAREEDGE.COM/patent)

DCD-1PH-US-P2H-F-1

PN:

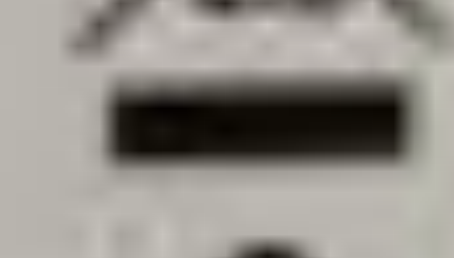
SJ0622-19120EC9E-3B

SN:

Made in China



Intertek  
6004590



solar **edge**

### StorEdge Connection Unit



Max AC Current (Smart EV Charger)	40 Aac
Max Continuous Output Power (Smart EV Charger)	9600 W
Max Battery Energy Storage	32 kWh
Number of AC phases	L1, L2, N
Maximum AC short circuit current	74 Aac
Weight	30.2 / 13.7 lbs/kg
Ambient Temperature:	-40°C -60°C
Enclosure Rating:	IP65/ Type 4X

For more details refer to the installation guide

Patent marketing notice: see [WWW.SOLAREEDGE.COM/patent](http://WWW.SOLAREEDGE.COM/patent)

Use 80°C copper PV wires only.

Revenue Grade ANSI C12.20

HIGHVOLTAGE RAPID SHUTDOWN SYSTEM

DCD-1PH-US-P2H-F-1

PN:

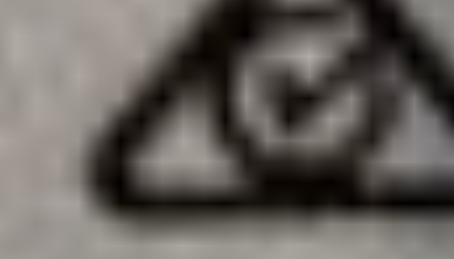
SJ0622-19120EC9E-3B

SN:

Made in China



Intertek  
6004590









solar**edge**

**HD** wave







MANTICIO Gonzalez  
93 Gold City Broadway  
24 Panels 1 array







PN: SE7600H-USMB9L14  
SN: SJA422-074060891-13



Alpha Mac  
84.08.05.21.00.04  
WIFI MAC:  
WIFI MAC: 84:08:05:21:00:04  
WIFI Password:  
840805210004  
840805210004



End Support Utility Interactive Not - Isolated  
Photovoltaic Inverter with Stand Alone Mode  
SE7600H - US  
Operating Voltage Range  
Max Input Current  
Max Continuous Output Power Grid connected  
Max Continuous Output Power Stand Alone  
Voltage Min - Max - Min  
Max Continuous Output Current Grid connected  
Max Continuous Output Current Stand Alone  
Max Output Power Current  
Max Usable Backfeed Current  
Frequency Min - Max - Min  
Output Power Factor  
Max Ambient Temperature  
Features  
With integrated ground fault protection per NEC 680.26 (3)  
Type 1 Protection Kit - Field Mount - Premium  
IP65/Type 1  
60 C  
+/- 0.85 - 1  
50.2 - 60.0 - 60.5 Hz  
0 A  
78 A  
47.5 A  
32 A  
211 - 240 - 254 VAC  
11400VA  
7800VA  
30.5 A  
270 - 480 VAC

solar edge



PHOTOVOLTAIC RAPID  
SHUTDOWN SYSTEM











2  
3



Do Not Remove (764)183-1111  
SolarEdge Technologies, Inc.  
www.solar-edge.com



**CAUTION**

HOT SURFACES TO REDUCE THE RISK OF BURNS DO NOT TOUCH. RISK OF ELECTRIC SHOCK WHEN THE PHOTOVOLTAIC ARRAY IS EXPOSED TO LIGHT. IT SUPPLIES A DC VOLTAGE TO EQUIPMENT. COVER PV MODULE WITH OPACIFY MATERIAL BEFORE CONNECTING OR DISCONNECTING THIS OPTIMIZER. DURING FAULT, ZERO CURRENT IS SOURCED INTO DC ARRAY BY CONVERTER.

SolarEdge Technologies Ltd.  
Power Optimizer

SolarEdge Technologies GmbH  
Werner-Str. 10 • 82152  
Munich • Germany

**WARNING** ELECTRICAL SHOCK HAZARD. THE DC CONDUCTORS OF THIS PHOTOVOLTAIC SYSTEM ARE UNGROUNDING AND MAY BE ENERGIZED.

**AVERTISSEMENT**

RISQUE DE CHOC ELECTRIQUE. QUAND LE CHAMP PHOTOVOLTAIQUE EST EXPOSE A LA LUMIERE, UNE TENSION ET EST FOURNIE A COT EQUIPEMENT. IL Y A UN RISQUE D'ENLACER. NE PAS TOUCHER AFIN DE REDUIRE LES RISQUES DE BRULURES LE COURANT DE REYOUR INJECTE DANS LE CONVERTISSEUR EN CAS DE DEFILLANCE DANS LE MODULE PV EST SUPPLIEE PAR.







**TOP TIER**  
SOLAR SOLUTIONS  
855-997-1213  
top tiersolutions.com



















Muricio Gonzalez  
93 Gold City Broadway  
24 Panels 1 array

























017489528-ED



Do Not Remove 017489528-ED



SolarEdge Technologies Ltd.  
SolarEdge Technologies GmbH  
Werner-Eckert-Strasse 6/K1829  
Munich/Germany



SolarEdge Technologies Ltd  
Power Optimizer

SolarEdge Technologies GmbH  
Werner-Eckert-Strasse 6/K1829  
Munich/Germany

### CAUTION

HOT SURFACES TO REDUCE THE RISK OF BURNS DO NOT TOUCH. RISK OF ELECTRIC SHOCK WHEN THE PHOTOVOLTAIC ARRAY IS EXPOSED TO LIGHT, IT SUPPLIES A DC VOLTAGE TO EQUIPMENT. COVER PV MODULE WITH OPACQUE MATERIAL BEFORE CONNECTING OR DISCONNECTING THIS OPTIMIZER. DURING FAULT, ZERO CURRENT IS SOURCED INTO DC ARRAY BY CONVERTER.

**WARNING** ELECTRIC SHOCK HAZARD. THE DC CONDUCTORS OF THIS PHOTOVOLTAIC SYSTEM ARE UNGROUNDED AND MAY BE ENERGIZED.

### AVERTISSEMENT

RISQUE DE CHOC ELECTRIQUE. QUAND LE CHAMP PHOTOVOLTAIQUE EST EXPOSE A LA LUMIERE, UNE TENSION CC EST FOURNIE A CET EQUIPEMENT. SURFACES CHAUDES. NE PAS TOUCHER, AFIN DE REDUIRE LES RISQUES DE BRULURES LE COURANT DE RETOUR INJECTE PAR LE CONVERTISSEUR EN CAS DE DEFAILLANCE DANS LE MODULE PV EST TOUJOURS NUL.

Do not disconnect under load















