







Model Type : FF-MP-BBB-400

Nominal Maximum Power	(Pmax):	400(0-5)W
Maximum operating Voltage	(Vmp):	31.01V
Maximum operating Current	(Imp):	12.90A
Open Circuit Voltage	(Voc):	37.04(±3%)V
Short Circuit Current	(Isc):	13.79(±3%)A
Maximum System Voltage	:	1500V
Maximum Series Fuse Rating	:	25A
Fire Rating	:	Type 1

All electrical data at Standart Test Conditions (STC): Irradiance of 1000W/m², spectrum AM1.5 and temperature of 25°C.

WARNING - ELECTRIC HAZARD



This solar module produces electrical voltage when exposed to sunlight or intense artificial lights. Proper precautions associated with electrical power systems must be taken while handling and installing this product.

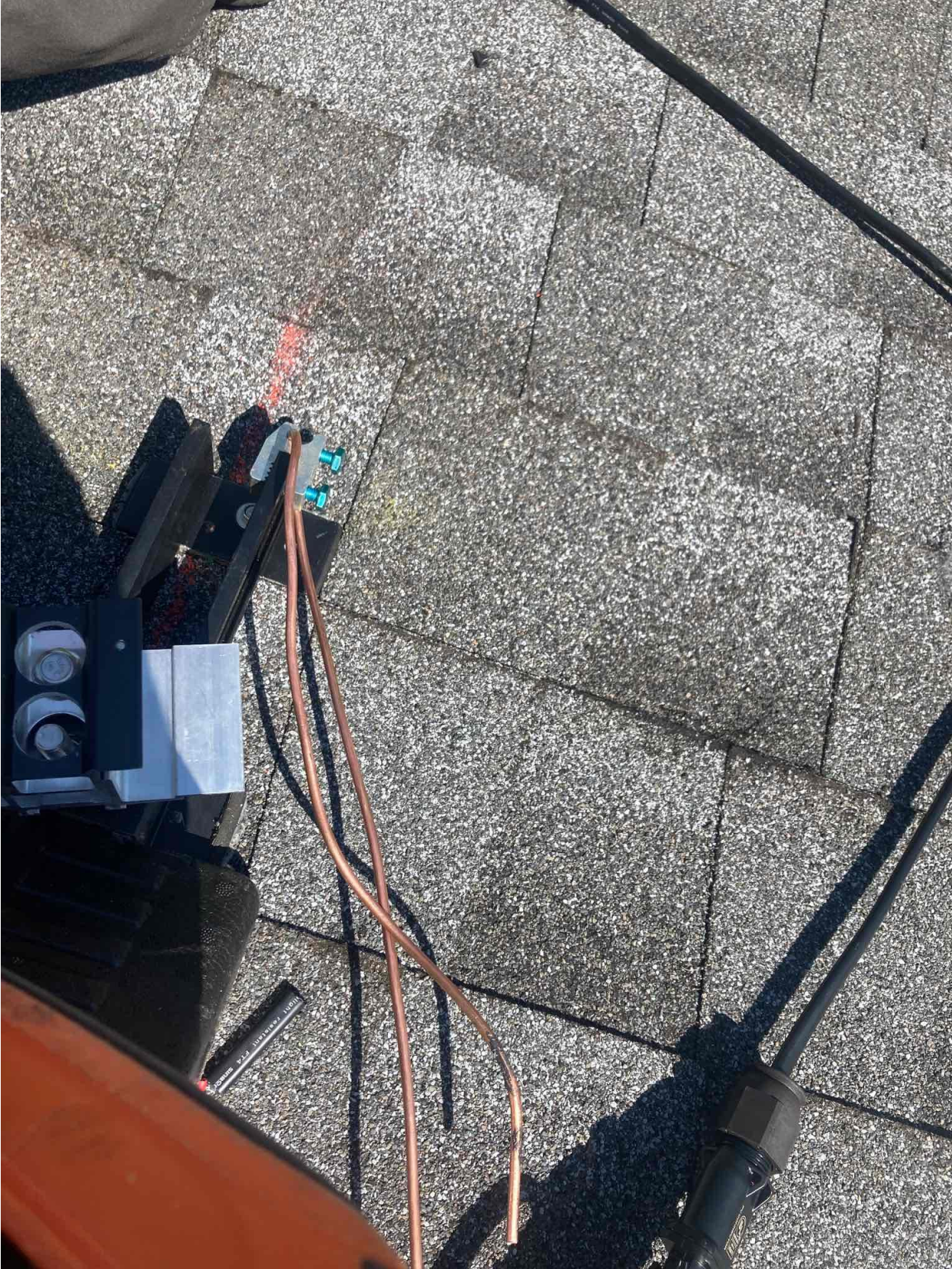
PLEASE READ THE INSTRUCTION MANUAL FOR MORE INFORMATION PRIOR TO INSTALLATION.

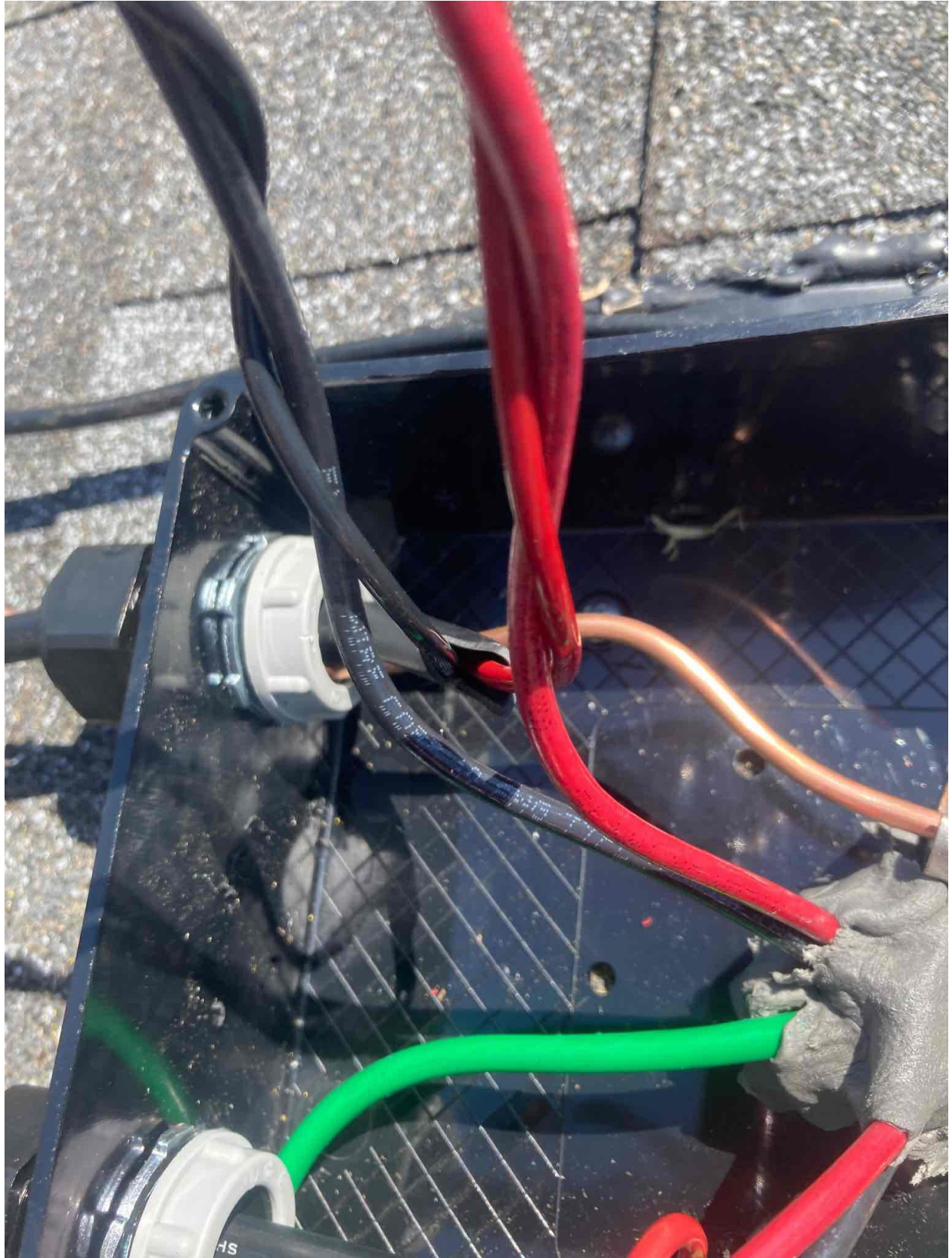


Conforms to UL 510
US UL61730-1/-2,
UL91215-1/-1/-1/-2,
Certified to CSA 510
C22.2 61730-1/-2

Intertek
501908F

Made in Indonesia





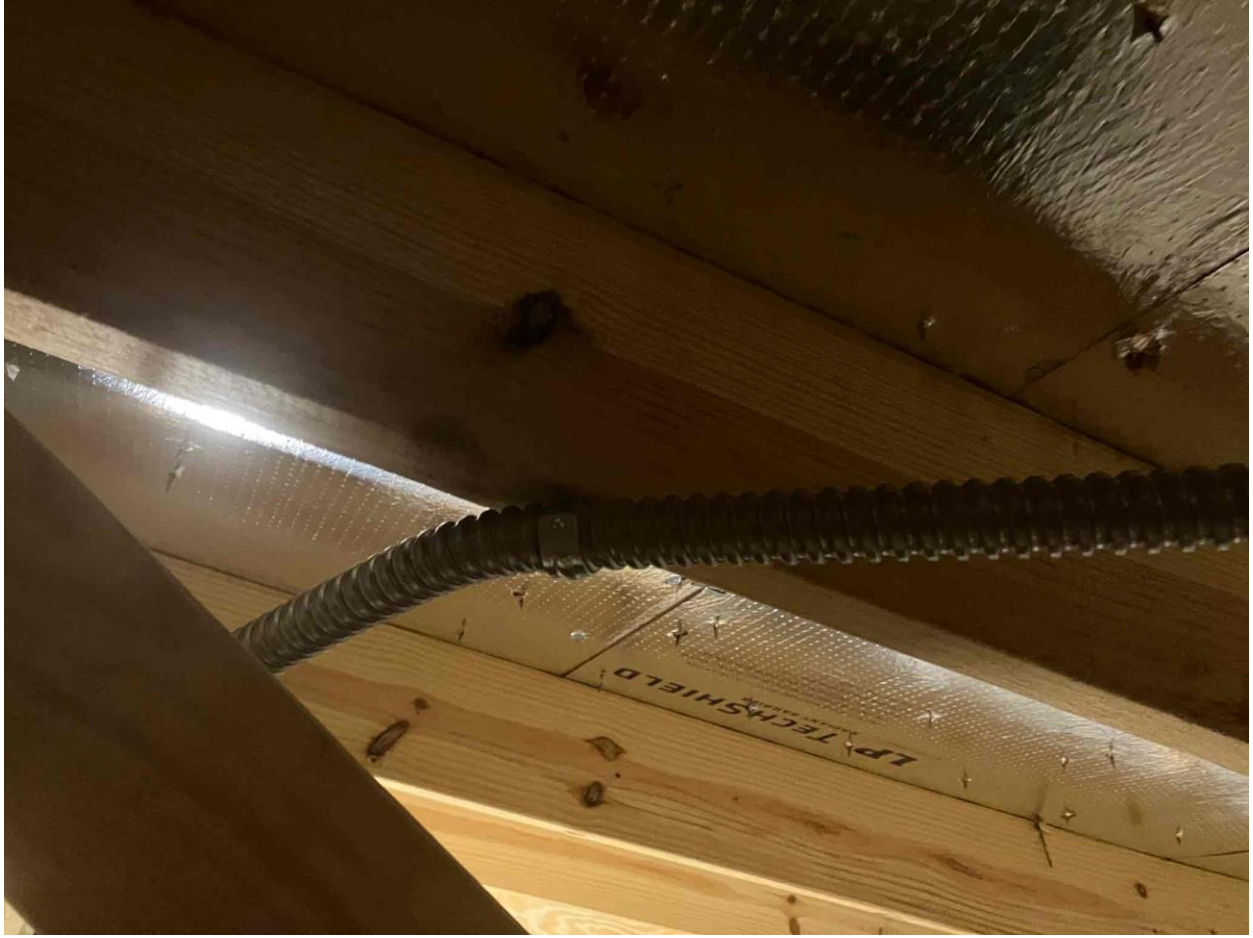




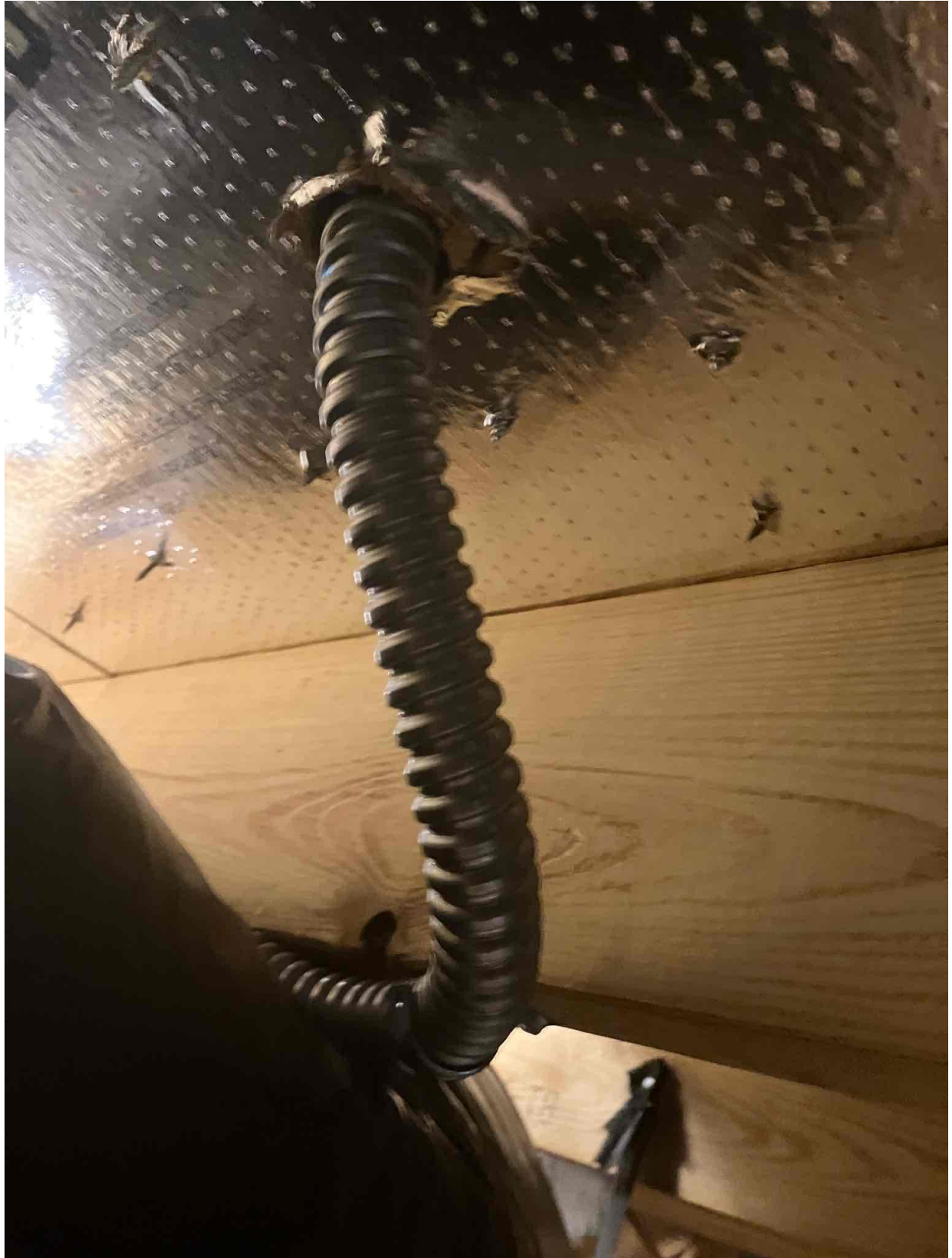














Miller 142
Placid

WARNING!

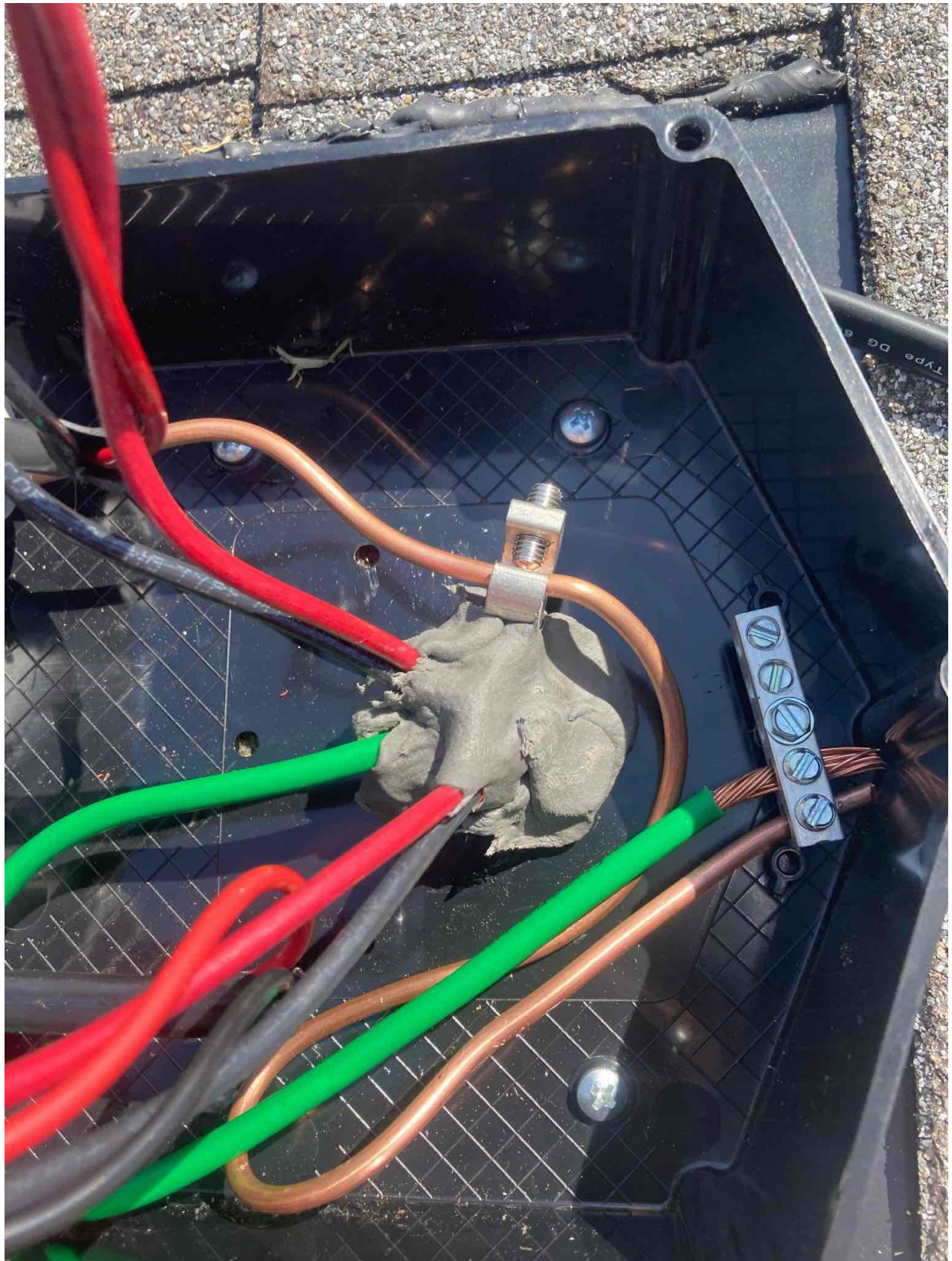
MAX DC RATING
MAX AC RATING
ALLOWABLE WIRE
AMBIENT OPERATING TEMP

29466

REFER TO INSTALLATION MANUAL
VOLUME 100 CU INCHES
TORQUE FOR ALL SCREWS & BOLTS: 15-20 LBS
CONFORMS TO UL STANDARD 1741



Hubertek
4019942 NEMA 3R





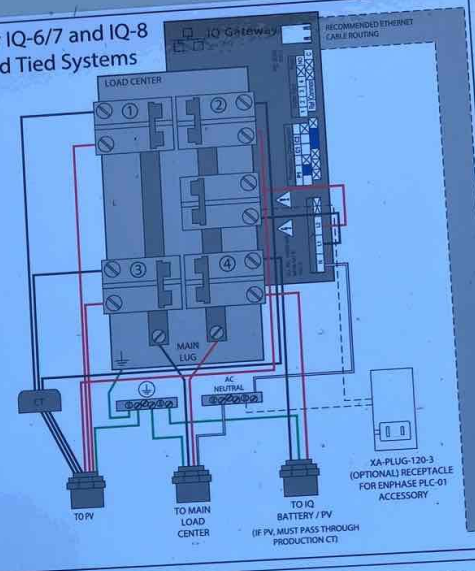


Combiner LED & buttons quick reference guide



- Enlighten communication LED**
 - Flashes green when communication is established (software default)
 - Flashes green when communication is established or in progress
 - Flashes green when communication is established or in progress
 - Flashes green when communication is established or in progress
 - Flashes green when communication is established or in progress
- AP mode LED**
 - Flashes green when AP mode is enabled and IQ Gateway Wi-Fi network is available
 - Off when AP mode is disabled
 - Off in default unless feature is using AP mode
- AP mode button**
 - Only used to initiate factory installation or to reconfigure the system
 - Press IQ Gateway's wireless access point (WAP) to connect to the phone directly
- Power production LED**
 - Flashes green when all microinverters are producing power
 - Flashes green when all microinverters are producing power
 - Flashes green when all microinverters are producing power
 - Flashes green when all microinverters are producing power
 - Flashes green when all microinverters are producing power
- Device communication LED**
 - Flashes green when IQ Gateway is scanning for microinverters
 - Flashes green when all microinverters are communicating with IQ Gateway
 - Flashes green when all microinverters are communicating with IQ Gateway
 - Flashes green when all microinverters are communicating with IQ Gateway
 - Flashes green when all microinverters are communicating with IQ Gateway
- Device scan button**
 - Press once to initiate factory installation or to reconfigure the system
 - Press twice in 10 seconds to do factory reset the power line

For IQ-6/7 and IQ-8 Grid Tied Systems



ENPHASE

IQ Combiner 4
Photovoltaic Combiner Box
X-IQ-AM1-240-4



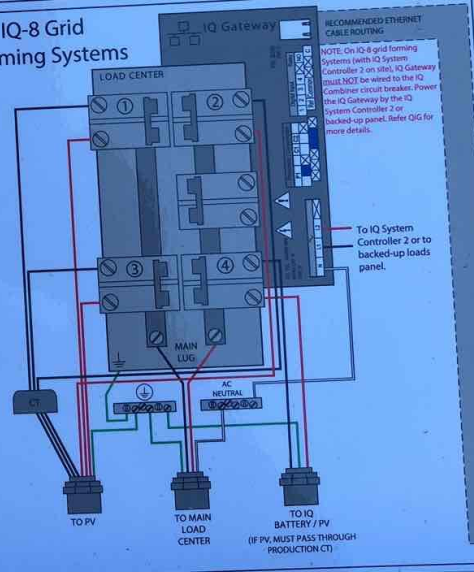
Electrical ratings
Voltage 240VAC, 60Hz
DG Breakers 80A MAX (combined)
DG Inputs 64A MAX (combined)
Output 65A MAX, 90A MAX feeder OCPD
Temperature 46°C MAX ambient
For DG breaker, use only Eaton BR series.

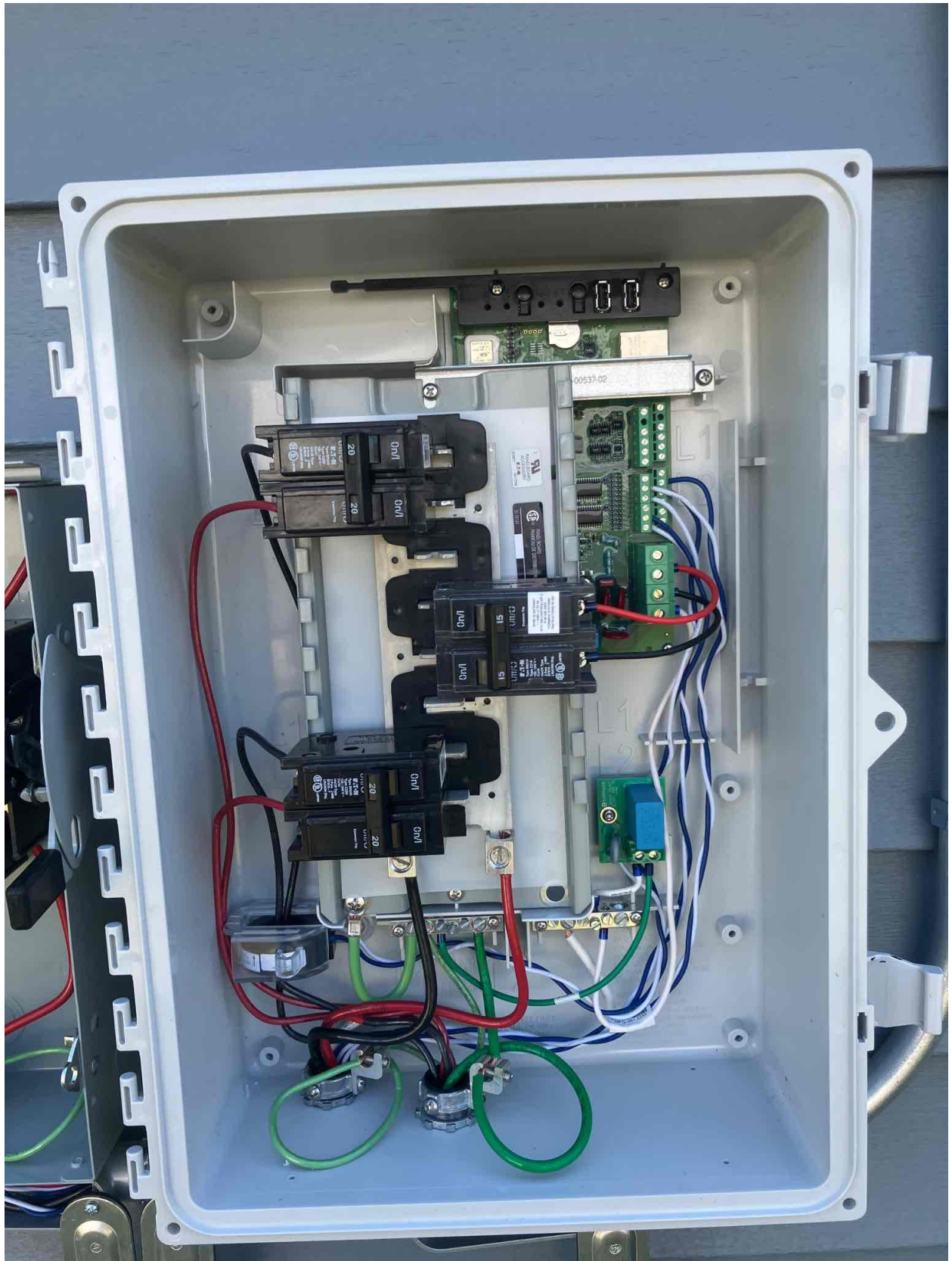
Dedicated solar and DG Combiner Box - do not add loads
10 AMP or 15 AMP IQ Gateway Breaker not used for backfeed

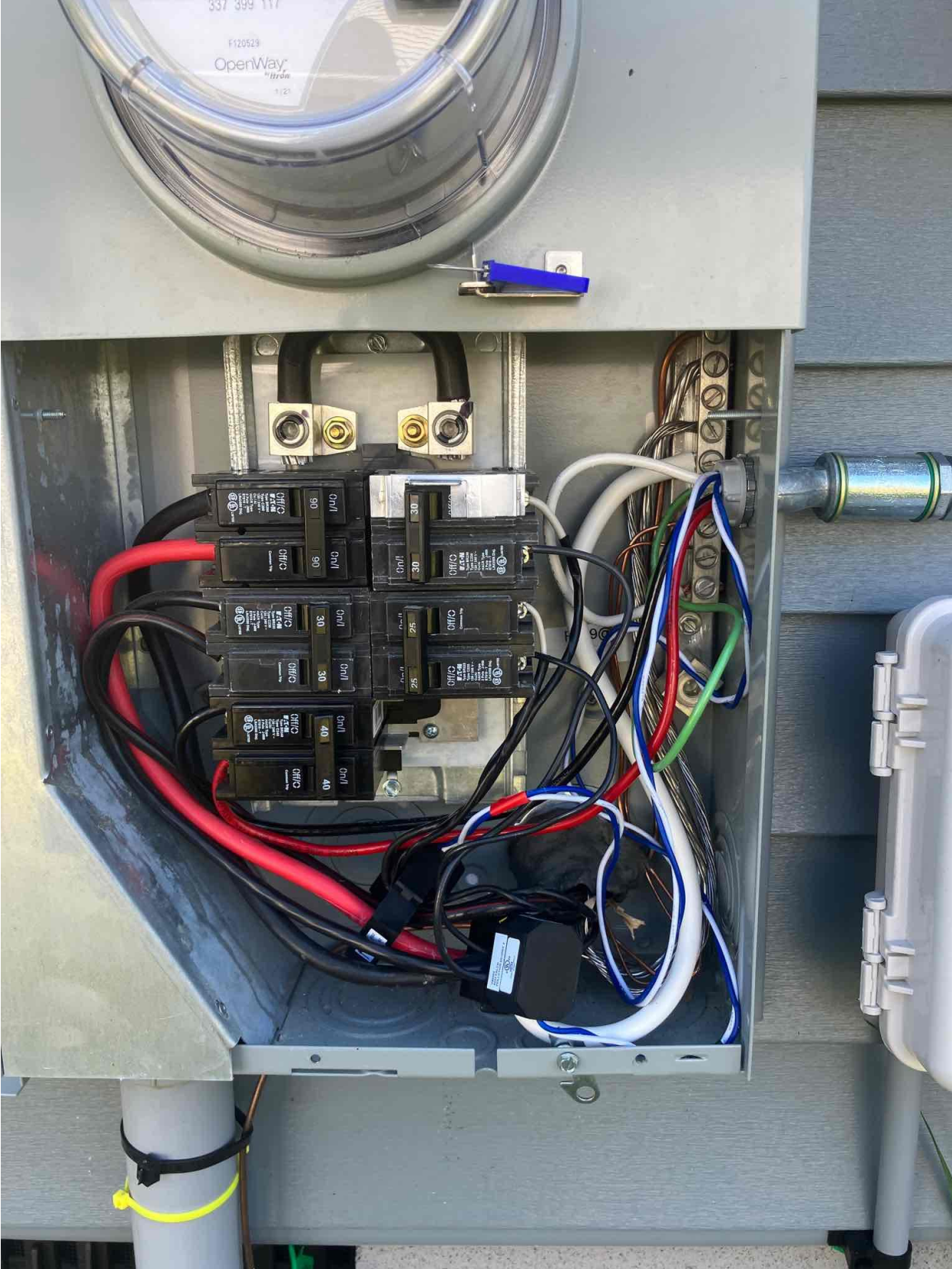
Connection	Wire sizes	Torque
DG Breaker (1, 2, 3, 4)	14-10 AWG 8 AWG 6-4 AWG	3.2 Nm (20 lb-in) 2.8 Nm (23 lb-in) 3.0 Nm (27 lb-in)
60A Circuit Breaker only	4-1/0 AWG	5.0 Nm (45 lb-in)
IQ Gateway Breaker	14-10 AWG	2.26 Nm (20 lb-in)
Neutral and ground	Large screw	2-1/0 AWG 5.6 Nm (45 lb-in) 14-3 AWG 5.1 Nm (45 lb-in)
	Small screw	6 AWG 3.6 Nm (32 lb-in) 8 AWG 2.6 Nm (23 lb-in) 10-14 AWG 2.3 Nm (20 lb-in)
Main lug	10-4 AWG	5.0 Nm (45 lb-in)
	3-2/0 AWG	5.6 Nm (50 lb-in)

Copper conductors only, rated min. 75°C. Follow NFPA 70 (NEC), or CSA C22.1 part 1, and all local codes.
For DG Breakers larger than 20A, use wire insulated for 90°C based on 75°C ampacities.
Designed in California and New Zealand
Made in Mexico

For IQ-8 Grid Forming Systems











AT&T
Type BR230
Type C230
120/240 V-
C/N/AI
HACR Type
E7819 - T
LR43555 Digi-
LISTED

90 On/I

Common Trip
OFF/O

90 On/I

AT&T
Type BR230
Type C230
120/240 V-
2 Pole, 4-Wire
E7819 - T
LR43555 Digi-
LISTED

30 On/I

Common Trip
OFF/O

30 On/I

AT&T
Type BR230
Type C230
120/240 V-
C/N/AI
HACR Type
E7819 - T
LR43555 Digi-
LISTED

40 On/I

30 On/I

30 On/I

25 On/I

25 On/I

AT&T
Type BR230
Type C230
120/240 V-
C/N/AI
HACR Type
E7819 - T
LR43555 Digi-
LISTED

Common Trip
OFF/O

AT&T
Type BR230
Type C230
120/240 V-
2 Pole, 4-Wire
E7819 - T
LR43555 Digi-
LISTED

