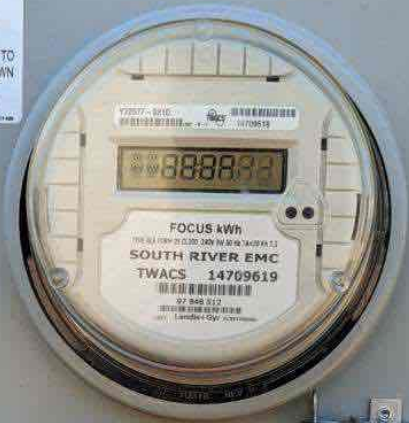


**SOLAR PV SYSTEM  
EQUIPPED WITH  
RAPID SHUTDOWN**



TURN RAPID SHUTDOWN SWITCH TO THE "OFF" POSITION TO SHUT DOWN PV SYSTEM AND REDUCE SHOCK HAZARD IN THE ARRAY

**CAUTION**  
DUAL POWER SUPPLY



**WARNING: PHOTOVOLTAIC  
POWER SOURCE**

WARNING: PHOTOVOLTAIC POWER SOURCE  
WARNING: ELECTRIC SHOCK HAZARD  
DO NOT TOUCH TERMINALS ON BOTH THE LINE AND LOAD SIDE  
TERMINALS ON THE OPEN POSITION FOR SERVICE  
MAY BE ENERGIZED BY BOTH SOURCE  
BE ENERGIZED BOTH SOURCE  
AND MAIN SERVICE  
PV POWER SOURCE  
MAXIMUM AC OPERATING CURRENT  
MAXIMUM AC OPERATING VOLTAGE

**WARNING**  
ELECTRIC SHOCK HAZARD  
TERMINALS ON THE LINE AND LOAD SIDES MAY BE ENERGIZED IN THE OPEN POSITION

**EATON**

General Duty Safety Switch  
interrupteur de service à usage général  
interruptor de servicio de servicio general

60 A, 240 V~ 50 Hz

Complete safety switch  
Veuillez lire attentivement le manuel  
información completa de especificaciones en el  
manual

Further instructions inside  
Autres instructions à l'intérieur  
Instrucciones adicionales por dentro

Made in U.S.A. / Fabriqué aux E.U. / Hechtel in U.S.A.

**⚠ DANGER**  
ELECTRIC SHOCK HAZARD  
NEVER HEAR IN BURN  
• Do not touch any exposed conductive parts  
• Do not touch any exposed conductive parts  
• Do not touch any exposed conductive parts

**⚠ PELIGRO**  
RIESGO DE GOLPE ELÉCTRICO  
NUNCA TOQUE PARTES EXPOSIDAS  
• No toque partes expuestas conductoras  
• No toque partes expuestas conductoras  
• No toque partes expuestas conductoras



**WARNING: PHOTOVOLTAIC POWER SOURCE**

**⚠ WARNING ⚠**  
ELECTRIC SHOCK HAZARD  
DO NOT TOUCH TERMINALS  
TERMINALS ON BOTH LINE AND  
LOAD SIDES MAY BE ENERGIZED  
IN THE OPEN POSITION  
  
DC VOLTAGE IS  
ALWAYS PRESENT WHEN  
SOLAR MODULES ARE  
EXPOSED TO SUNLIGHT

**PHOTOVOLTAIC SYSTEM  
EQUIPPED WITH  
RAPID SHUTDOWN**

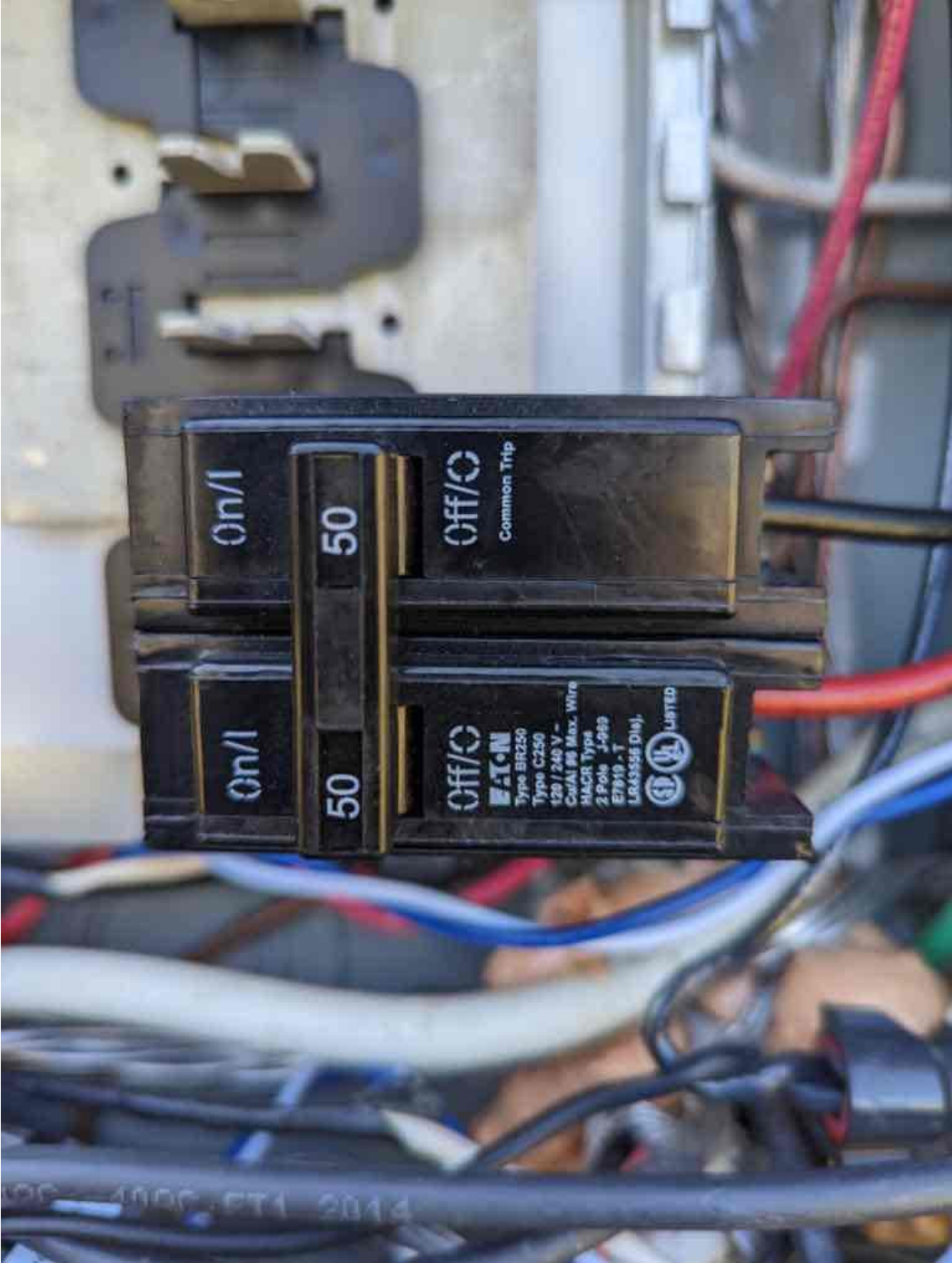
**PHOTOVOLTAIC SYSTEM  
⚠ AC DISCONNECT ⚠**  
OPERATING VOLTAGE [ ] VOLTS  
OPERATING CURRENT [ ] AMPS

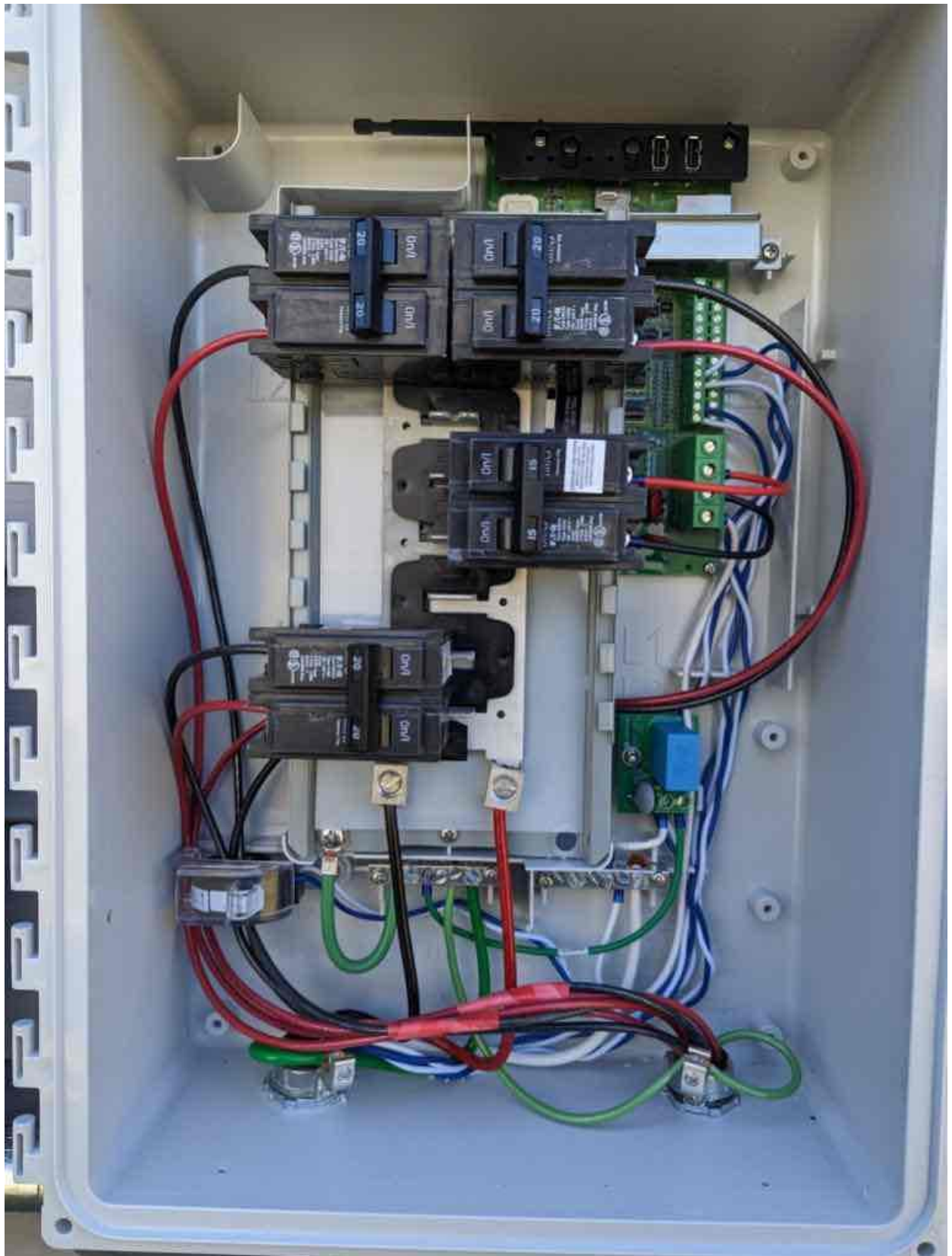


OFF



**SOLAR PV BREAKER**  
**BREAKER IS BACKFED**  
**DO NOT RELOCATE**  
FCDLABELS.COM  
02-076







# IQ Combiner 4

Photovoltaic  
Combiner Box  
X-IQ-AM1-240-4



### Electrical ratings

**Voltage** 240VAC, 60Hz  
**DG Breakers** 80A MAX (combined)  
**DG Inputs** 64A MAX (combined)  
**Output** 65A MAX, 90A MAX feeder OCPD  
**Temperature** 46°C MAX ambient  
 Use only Eaton BR series Breakers (60A max)

S/N:



P/N:



**Dedicated solar and DG Combiner Box - do not add loads 10 AMP  
Envoy Breaker not used for backfeed**

Connection	Wire sizes	Torque
DG Breaker	14-10 AWG	2.2 Nm (20 lb-in)
	8 AWG	2.8 Nm (25 lb-in)
	6-4 AWG	3.0 Nm (27 lb-in)
60A Circuit Breaker only	4-1/0 AWG	5.0 Nm (45 lb-in)
Neutral and ground		
Large Screw 14 - 1/0 AWG 5.0 Nm (45 lb-in)	1 Small Screw 8 AWG	2.6 Nm (23 lb-in)
	Small Screw 10 - 14 AWG	2.3 Nm (20 lb-in)
Small Screw 6 AWG 3.6 Nm (32 lb-in)	10-4 AWG	5.0 Nm (45 lb-in)
Main lug	3-2/0 AWG	5.6 Nm (50 lb-in)

Copper conductors only, rated min. 75°C.  
Follow NFPA 70 (NEC), or CSA C22.1 part 1, and all local codes.

For DG Breakers larger than 20A, use wire insulated for 90°C based on 75°C ampacities.

Designed in California and New Zealand  
Made in Mexico

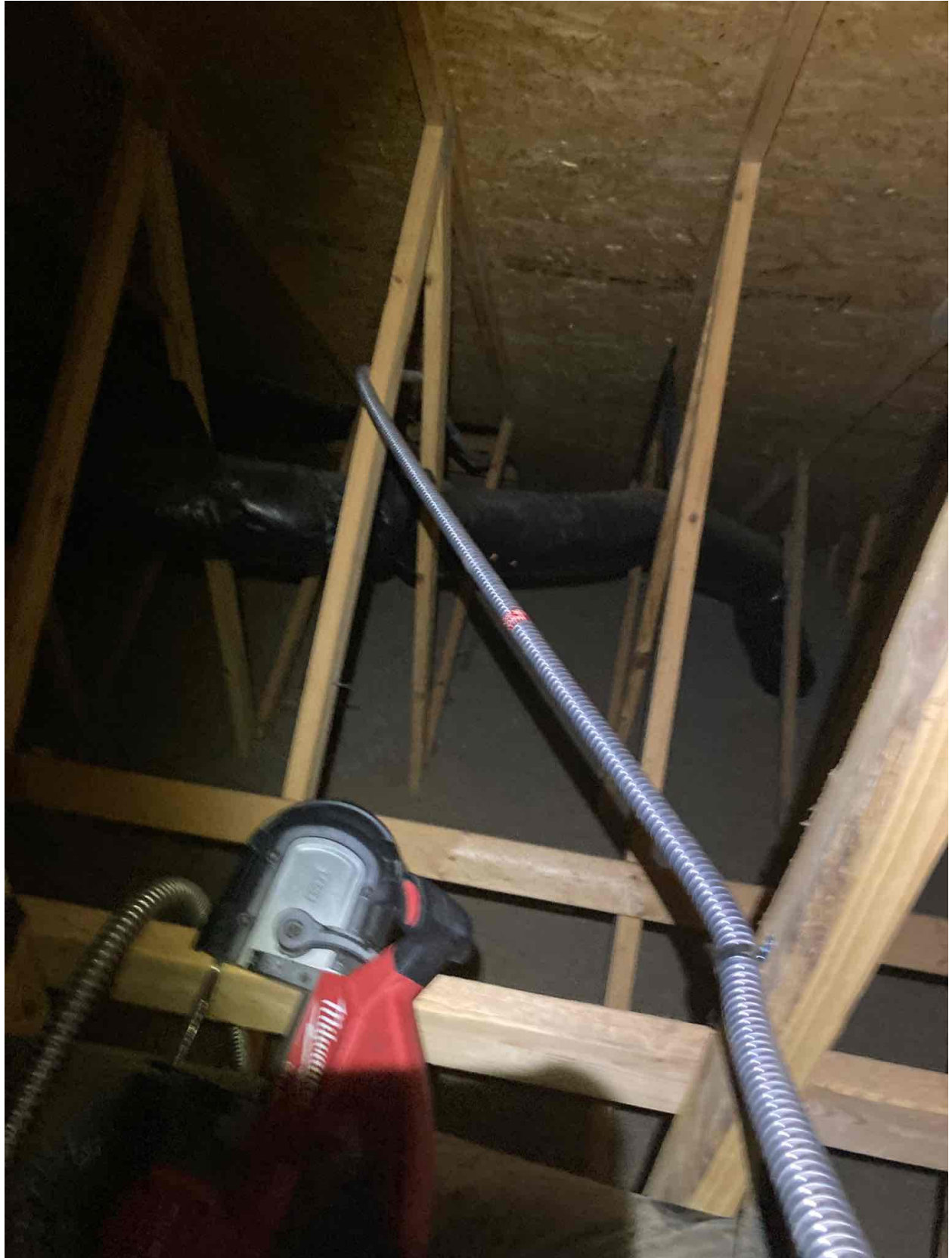


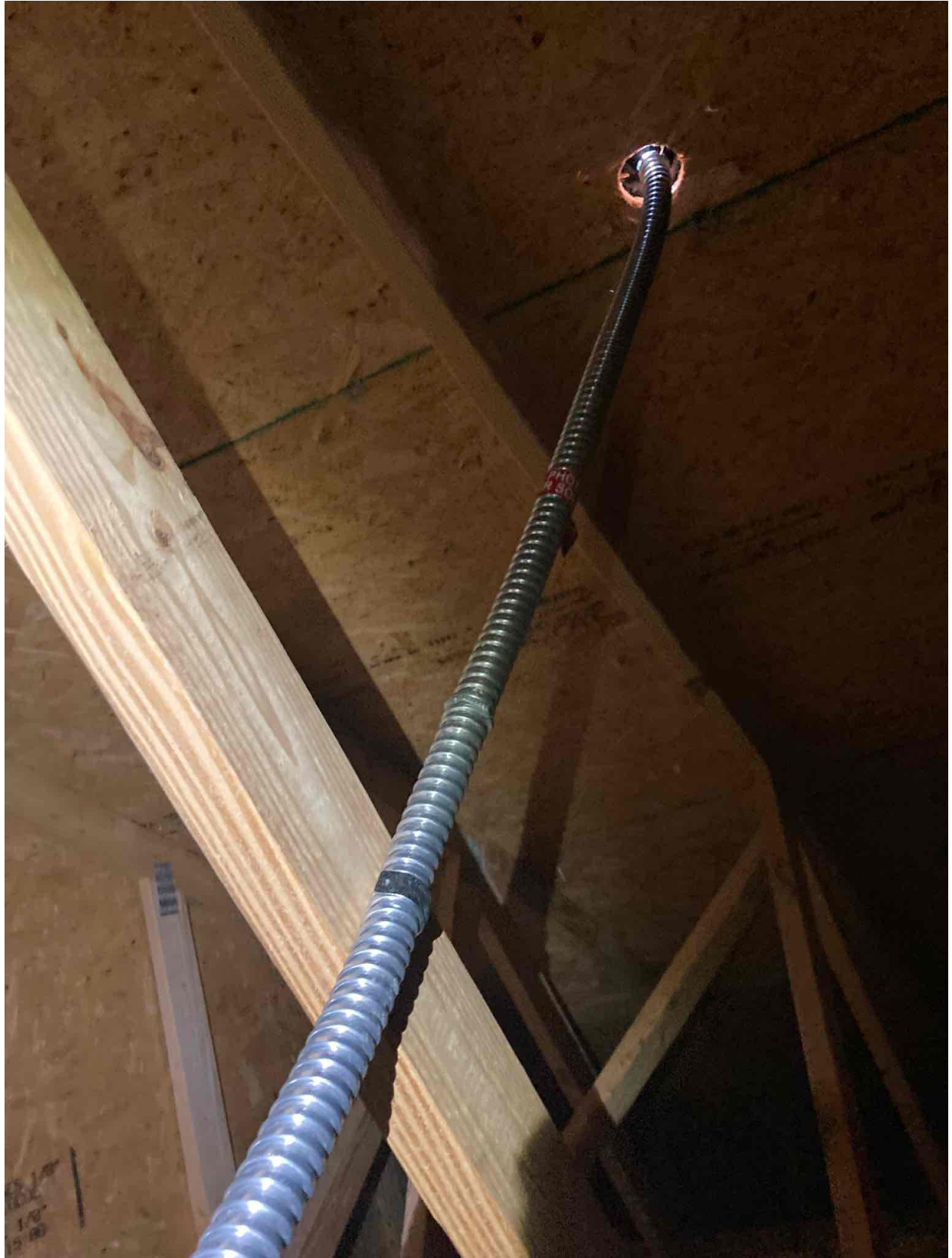
For



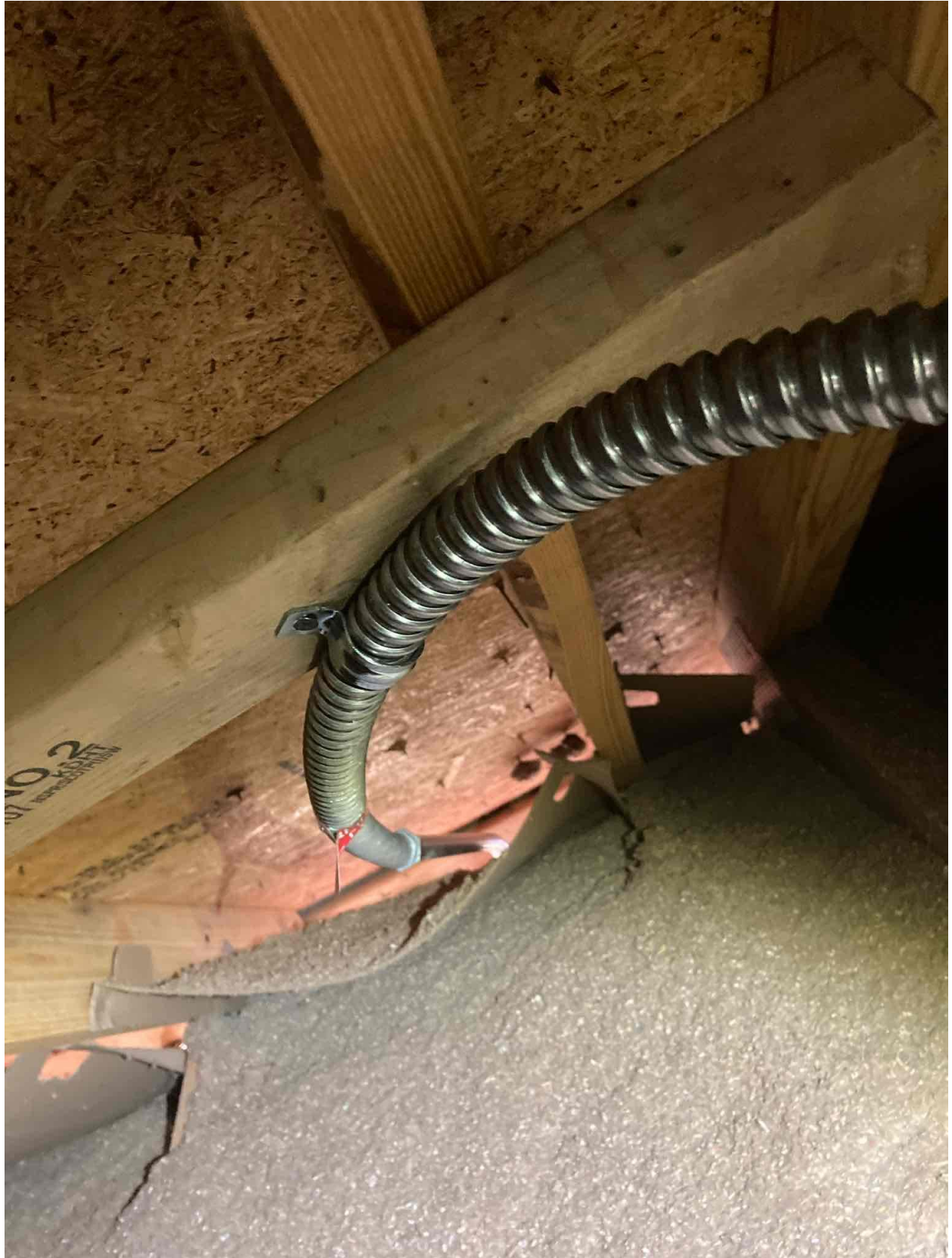






























Model Type : FF-MP-BBB-400

Nominal Maximum Power	(Pmax):	400(0-5)W
Maximum operating Voltage	(Vmp):	31.01V
Maximum operating Current	(Imp):	12.90A
Open Circuit Voltage	(Voc):	37.04(±3%)V
Short Circuit Current	(Isc):	13.79(±3%)A
Maximum System Voltage	:	1500V
Maximum Series Fuse Rating	:	25A
Fire Rating	:	Type 1

All electrical data at Standart Test Conditions (STC): Irradiance of 1000W/m<sup>2</sup>, spectrum AM1.5 and temperature of 25°C.

**WARNING - ELECTRIC HAZARD**



This solar module produces electrical voltage when exposed to sunlight or intense artificial lights. Proper precautions associated with electrical power systems must be taken while handling and installing this product.

PLEASE READ THE INSTRUCTION MANUAL FOR MORE INFORMATION PRIOR TO INSTALLATION.



Conforms to UL STD  
US UL61730-1/-2,  
UL61215-1/-1/-2  
Certified to CSA STD  
C22.2 #61730-1/-2

Intertek  
5019087

Made in Indonesia





