

SIEMENS

Indoor Load Center

Model: 12000

Page 1

WARNING: This equipment contains live parts. Do not touch or attempt to repair or adjust the equipment. Only qualified personnel should be allowed to work on this equipment. Failure to follow these instructions could result in death or serious injury.

CAUTION: This equipment contains live parts. Do not touch or attempt to repair or adjust the equipment. Only qualified personnel should be allowed to work on this equipment. Failure to follow these instructions could result in death or serious injury.

▲ DANGER

Electrical shock, fire, or explosion may occur if the equipment is not properly installed or maintained. Only qualified personnel should be allowed to work on this equipment. Failure to follow these instructions could result in death or serious injury.



▲ PELIGRO

Alto voltaje puede causar lesiones graves o la muerte. Solo personal calificado debe trabajar en este equipo. No seguir las instrucciones puede resultar en lesiones graves o la muerte.

WARNING: This equipment contains live parts. Do not touch or attempt to repair or adjust the equipment. Only qualified personnel should be allowed to work on this equipment. Failure to follow these instructions could result in death or serious injury.

Terminal	Wire Size	Wire Color	Terminal Block	Terminal Label	Notes
1	10 AWG	Black	10-1	10-1	Line
2	10 AWG	White	10-2	10-2	Neutral
3	10 AWG	Green	10-3	10-3	Ground
4	10 AWG	Black	10-4	10-4	Line
5	10 AWG	White	10-5	10-5	Neutral
6	10 AWG	Green	10-6	10-6	Ground
7	10 AWG	Black	10-7	10-7	Line
8	10 AWG	White	10-8	10-8	Neutral
9	10 AWG	Green	10-9	10-9	Ground
10	10 AWG	Black	10-10	10-10	Line
11	10 AWG	White	10-11	10-11	Neutral
12	10 AWG	Green	10-12	10-12	Ground

WIRE GAUGES OR ALUMINUM WIRE

Wire Size	Terminal	Notes
10 AWG	10-1 to 10-12	Standard
12 AWG	10-1 to 10-12	Not recommended
14 AWG	10-1 to 10-12	Not recommended
16 AWG	10-1 to 10-12	Not recommended
18 AWG	10-1 to 10-12	Not recommended
20 AWG	10-1 to 10-12	Not recommended
22 AWG	10-1 to 10-12	Not recommended
24 AWG	10-1 to 10-12	Not recommended
26 AWG	10-1 to 10-12	Not recommended
28 AWG	10-1 to 10-12	Not recommended
30 AWG	10-1 to 10-12	Not recommended

TERMINAL BLOCKS

Terminal Block	Terminal Label	Notes
10-1	10-1	Line
10-2	10-2	Neutral
10-3	10-3	Ground
10-4	10-4	Line
10-5	10-5	Neutral
10-6	10-6	Ground
10-7	10-7	Line
10-8	10-8	Neutral
10-9	10-9	Ground
10-10	10-10	Line
10-11	10-11	Neutral
10-12	10-12	Ground

TERMINAL BLOCKS

Terminal Block	Terminal Label	Notes
10-1	10-1	Line
10-2	10-2	Neutral
10-3	10-3	Ground
10-4	10-4	Line
10-5	10-5	Neutral
10-6	10-6	Ground
10-7	10-7	Line
10-8	10-8	Neutral
10-9	10-9	Ground
10-10	10-10	Line
10-11	10-11	Neutral
10-12	10-12	Ground





Air
Handler
Water
Heater
Heat
Pump



Range
Inside
Panel



1







Y72742.18

83564843

88888888

FOCUS kWh
TYPE AUF FORM 25 CL200 240V 3W 60Hz T4+30 kD 7.2
SOUTH RIVER EMC
DCSI 83564843
1000 000 10 010 011 010 011 010 011 010
117 324 004
1000 000 10 010 011 010 011 010 011 010
2011 Landis+Gyr 1101 kWh







24



Outside
Recpts.

Master
Bedroom

Flex
Room

Lights -
hall, a/ding,
laundry, gar.

Middle
Bedroom

Front
Corner
Bedroom

living
room

Dryer

Kitchen
recpts.
Range side

Refrig +
island bar
recpts.

Hall
Bath
Recpts

Garage
Recpts.

Master
Bath
Recpts

Washing
Machine

Dishwasher



Outside Right
Master Bedroom
Two Rooms
Kitchen, with laundry
Middle Bedroom
Front Lower Bedroom
Living room

Front Upper Bedroom
Back Bedroom
Back Lower Bedroom
Bathroom
Living room
Kitchen
Dining room
Two Rooms
Master Bedroom
Outside Left
Front Upper Bedroom

WARNING
This meter is not to be used for measuring power in a circuit where the current is not in phase with the voltage. The meter is not to be used for measuring power in a circuit where the current is not in phase with the voltage.

SPECIFICATIONS

Model	Accuracy	Range	Resolution
1000	±0.5%	0-1000	0.1
2000	±0.5%	0-2000	0.1
3000	±0.5%	0-3000	0.1
4000	±0.5%	0-4000	0.1
5000	±0.5%	0-5000	0.1

TERMINALS

Terminal	Function
1	Line
2	Neutral
3	Ground
4	Load

WIRING

Wiring should be done in accordance with the National Electrical Code (NEC) and local codes. The meter should be installed in a dry, well-ventilated area. The meter should be installed in a dry, well-ventilated area.

GROUNDING

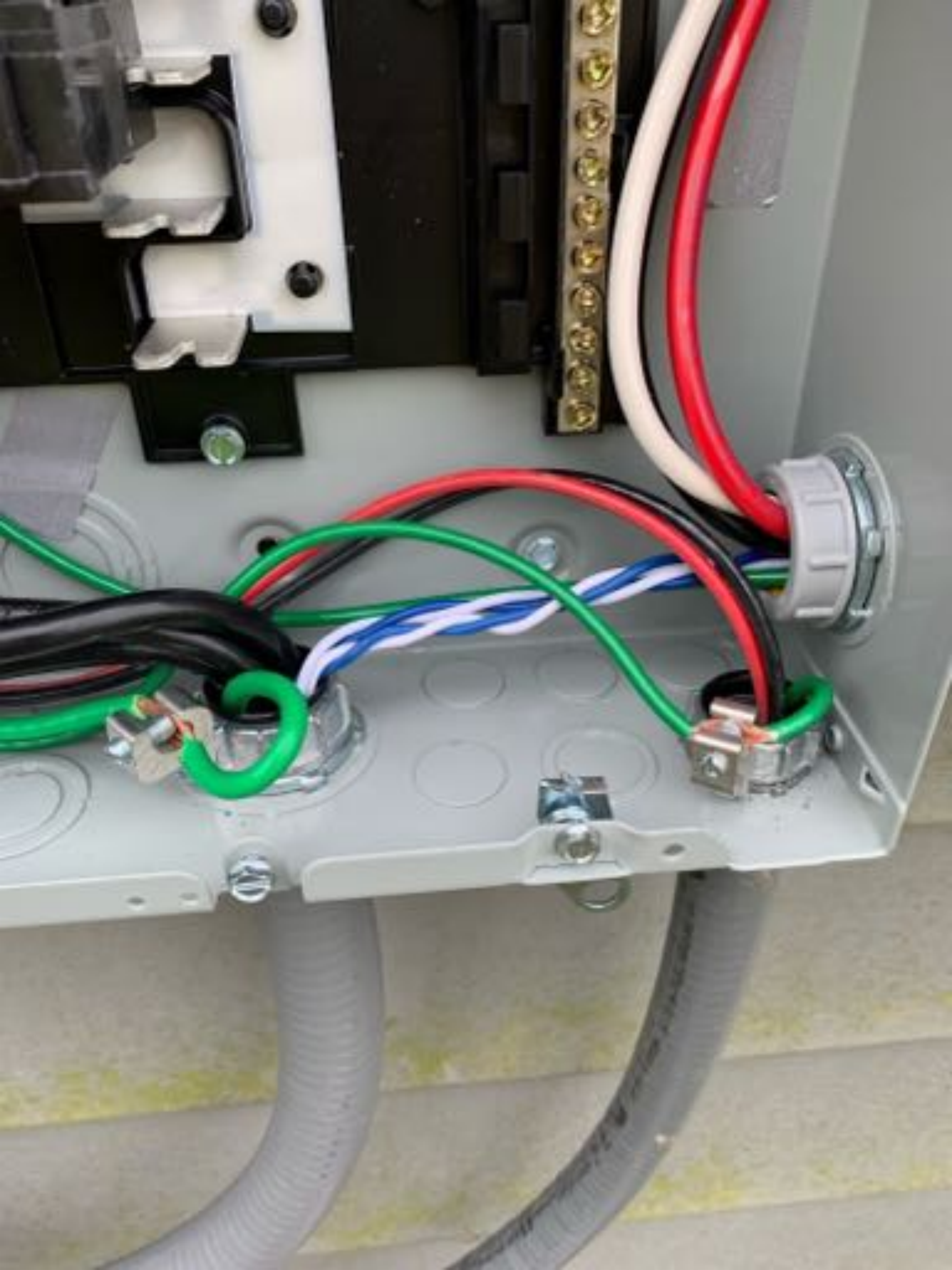
The meter must be grounded to the system ground. The ground connection should be made to the ground terminal (terminal 3).

INSTALLATION

The meter should be installed in a dry, well-ventilated area. The meter should be installed in a dry, well-ventilated area.

















 **CAUTION** 
SOLAR POINT OF CONNECTION

 **WARNING**
DUAL POWER SUPPLY
SOURCES: UTILITY GRID
AND PV SOLAR
ELECTRIC SYSTEM













TOP TIER

SERVICES SINCE 1988

855-997-1213

<http://www.kennedys.com>



ENPHASE

IQB+

1000W
24VDC
100A
120VAC
15A
1000W
24VDC
100A
120VAC
15A
1000W
24VDC
100A
120VAC
15A
1000W
24VDC
100A
120VAC
15A
1000W
24VDC
100A
120VAC
15A

WARNING
CAUTION

3
4
1



Happy Birthday









On/Off
On/Off

1

Range



3
4
1



WELCOME
to every home















Cindy Woodward

3/27/23

13 panels

1	2	3	4	5
6	7	8	9	10
11	12	13	14	15

Taylor Watson

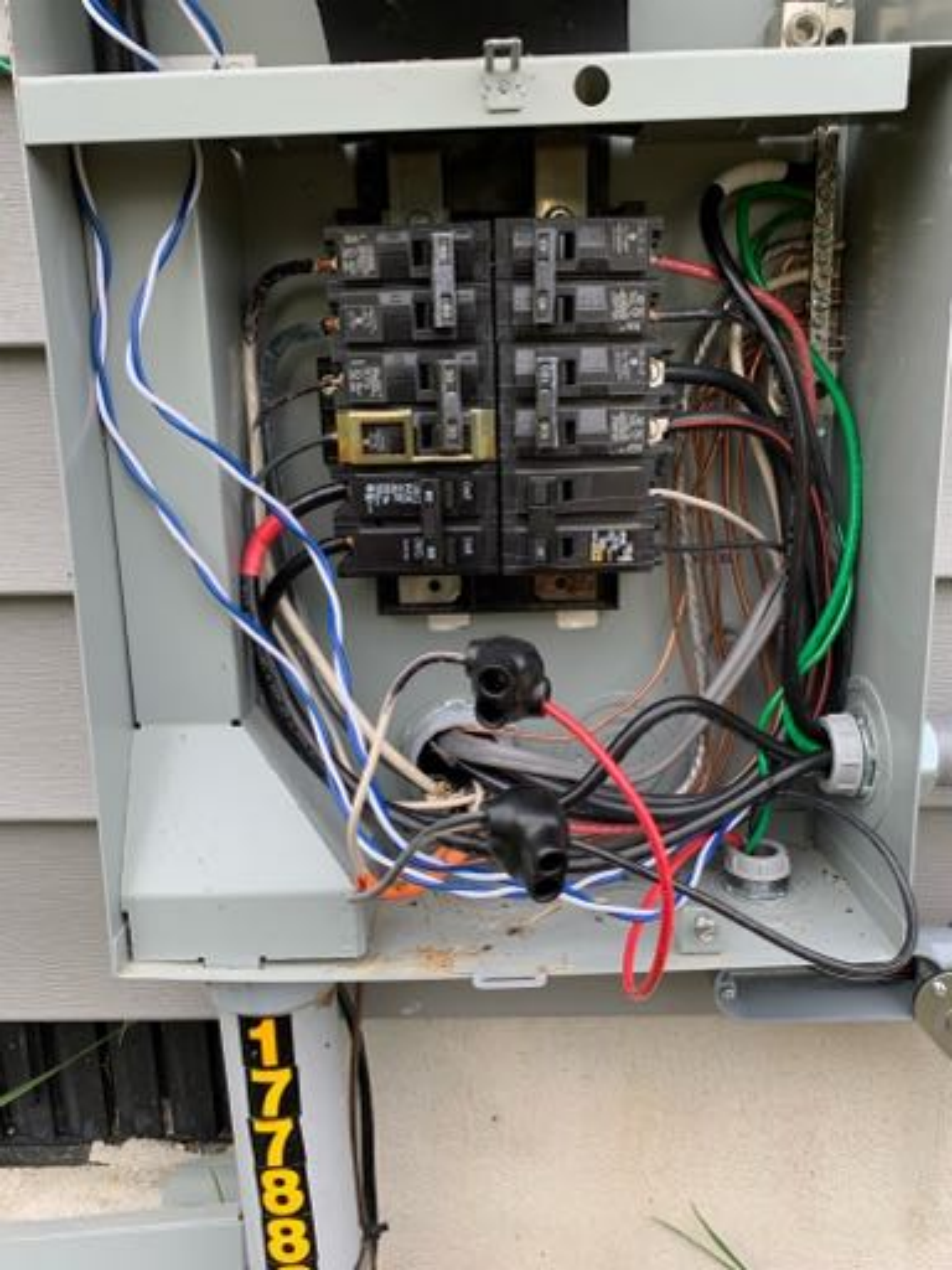
3/28/23

32 panels

1	2	3	4	5	6	7	8	9	10
11	12	13	14	15	16	17	18	19	20
21	22	23	24	25	26	27	28	29	30
31	32	33	34	35	36	37	38	39	40







1778881







Cindy Woodward

3/27/23

13 parcels

13	12	11	10	9	8	7
12	11	10	9	8	7	6
11	10	9	8	7	6	5
10	9	8	7	6	5	4
9	8	7	6	5	4	3
8	7	6	5	4	3	2
7	6	5	4	3	2	1

Taylor Watson

3/28/23

32 parcels

32	31	30	29	28	27	26	25	24	23	22	21	20	19	18	17	16	15	14	13	12	11	10	9	8	7	6	5	4	3	2	1
31	30	29	28	27	26	25	24	23	22	21	20	19	18	17	16	15	14	13	12	11	10	9	8	7	6	5	4	3	2	1	
30	29	28	27	26	25	24	23	22	21	20	19	18	17	16	15	14	13	12	11	10	9	8	7	6	5	4	3	2	1		
29	28	27	26	25	24	23	22	21	20	19	18	17	16	15	14	13	12	11	10	9	8	7	6	5	4	3	2	1			
28	27	26	25	24	23	22	21	20	19	18	17	16	15	14	13	12	11	10	9	8	7	6	5	4	3	2	1				
27	26	25	24	23	22	21	20	19	18	17	16	15	14	13	12	11	10	9	8	7	6	5	4	3	2	1					
26	25	24	23	22	21	20	19	18	17	16	15	14	13	12	11	10	9	8	7	6	5	4	3	2	1						
25	24	23	22	21	20	19	18	17	16	15	14	13	12	11	10	9	8	7	6	5	4	3	2	1							
24	23	22	21	20	19	18	17	16	15	14	13	12	11	10	9	8	7	6	5	4	3	2	1								
23	22	21	20	19	18	17	16	15	14	13	12	11	10	9	8	7	6	5	4	3	2	1									
22	21	20	19	18	17	16	15	14	13	12	11	10	9	8	7	6	5	4	3	2	1										
21	20	19	18	17	16	15	14	13	12	11	10	9	8	7	6	5	4	3	2	1											
20	19	18	17	16	15	14	13	12	11	10	9	8	7	6	5	4	3	2	1												
19	18	17	16	15	14	13	12	11	10	9	8	7	6	5	4	3	2	1													
18	17	16	15	14	13	12	11	10	9	8	7	6	5	4	3	2	1														
17	16	15	14	13	12	11	10	9	8	7	6	5	4	3	2	1															
16	15	14	13	12	11	10	9	8	7	6	5	4	3	2	1																
15	14	13	12	11	10	9	8	7	6	5	4	3	2	1																	
14	13	12	11	10	9	8	7	6	5	4	3	2	1																		
13	12	11	10	9	8	7	6	5	4	3	2	1																			
12	11	10	9	8	7	6	5	4	3	2	1																				
11	10	9	8	7	6	5	4	3	2	1																					
10	9	8	7	6	5	4	3	2	1																						
9	8	7	6	5	4	3	2	1																							
8	7	6	5	4	3	2	1																								
7	6	5	4	3	2	1																									
6	5	4	3	2	1																										
5	4	3	2	1																											
4	3	2	1																												
3	2	1																													
2	1																														
1																															

50









EATON

Dispositivo de desconexión de corriente
Interrupción de corriente durante
funcionamiento de emergencia de energía general
EATON 5070-5075
Condiciones de uso
Este dispositivo cumple con los
requisitos de la norma de seguridad de
IEEE
Eaton International Inc.
P.O. Box 100000, St. Louis, MO 63110
Estados Unidos de América

A SANGRE
¡CUIDADO!
¡CUIDADO!
A PELIGRO
¡CUIDADO!



WARNING
ELECTRIC SHOCK HAZARD
TERMINALS ON THE LINE AND
LOAD SIDES MAY BE ENERGIZED
IN THE OPEN POSITION

AC DISCONNECT
PHOTOVOLTAIC SYSTEM
POWER SOURCE

RATED AC
OUTPUT CURRENT **50.75** AMPS

NOMINAL OPERATING
AC VOLTAGE **240** VOLTS

WARNING

EQUAL POWER SUPPLY

SOURCE: UTILITY GRID

AND PV SOLAR

ELECTRIC SYSTEM

**CAUTION: SOLAR ELECTRIC
SYSTEM CONNECTED**




CAUTION

171

⚠ WARNING

THIS EQUIPMENT FED BY MULTIPLE
SOURCES. TOTAL RATING OF ALL
OVERCURRENT DEVICES INCLUDING
MAIN SUPPLY OVERCURRENT
DEVICE SHALL NOT EXCEED
RATING OF BUSBAR.

 ENPHASE

**SOLAR PV SYSTEM
EQUIPPED WITH
RAPID SHUTDOWN**



FOR SAFETY, ALWAYS REFER TO
THE OMP POSITION TO SHUT DOWN
PV SYSTEM AND REDUCE
SHOCK HAZARD IN THE ARRAY.

























