

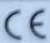
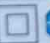

		Photovoltaic Module Type : NESE 370-60MH-M6	
Maximum Power(Pmpp)	(370W ±3)%	Sorting Tolerance of Pmpp0	~ +4.99W
Open Circuit Voltage(Voc)	(41.0V ±3)%	Measurement uncertainty	±3%(Pmpp,Voc&Isc)
Short Circuit Current(Isc)	(11.42A ±3)%	Maximum over-current protection Rating	20A
Maximum Power Voltage(Vmpp)	34.2V	Dimension	1755×1038×35(mm)
Maximum Power Current(Imp)	10.82A	Weight	20.5Kg
Max System Voltage	1500V	All electrical data shall be shown as relative to standard test conditions (STC) (1000 W/m², (25 ± 2) °C, AM 1.5 according to IEC 60904-3)	
Fire Resistance Rating	Class C	Module Fire Performance for US market: Type 1 (UL61730:2017)	
System Fire Class Rating for US market: See Installation Instructions for Installation Requirements to Achieve a Specified System Fire Class Rating with this Product, this statement should be marked on the label.			
For field connection, use 4mm² & 12 AWG copper wire insulated for a minimum of 90°C. System Fire Class Rating: See Installation Instructions for Installation Requirements to Achieve a Specified System Fire Class Rating with this Product.		WARNING  This solar module produces electrical voltage when exposed to sunlight or intense artificial lights. Proper precautions associated with electrical power systems must be taken while handling and installing this product.  Ce module photovoltaïque est conçu pour produire de l'énergie électrique sous forme de courant continu quand soumis à la lumière du jour ou à une source de lumière artificielle. Les précautions adéquates associées aux systèmes de production électrique doivent être prises lors de la manipulation et de l'installation de ce produit.	
  		PV module classification class II Conforms to IEC61215 : 2016 IEC61730 : 2016 & UL61730 : 2017	
Please read the installation manual for more information prior to installation. REACH compliance information (applicable for EU and EEA countries only) is described therein. The installation manual can be downloaded on NE Solar website: https://www.NESOLAR.COM.KH			
New East Solar Energy(Cambodia)Co.,LTD <small>MADE IN CAMBODIA</small>			







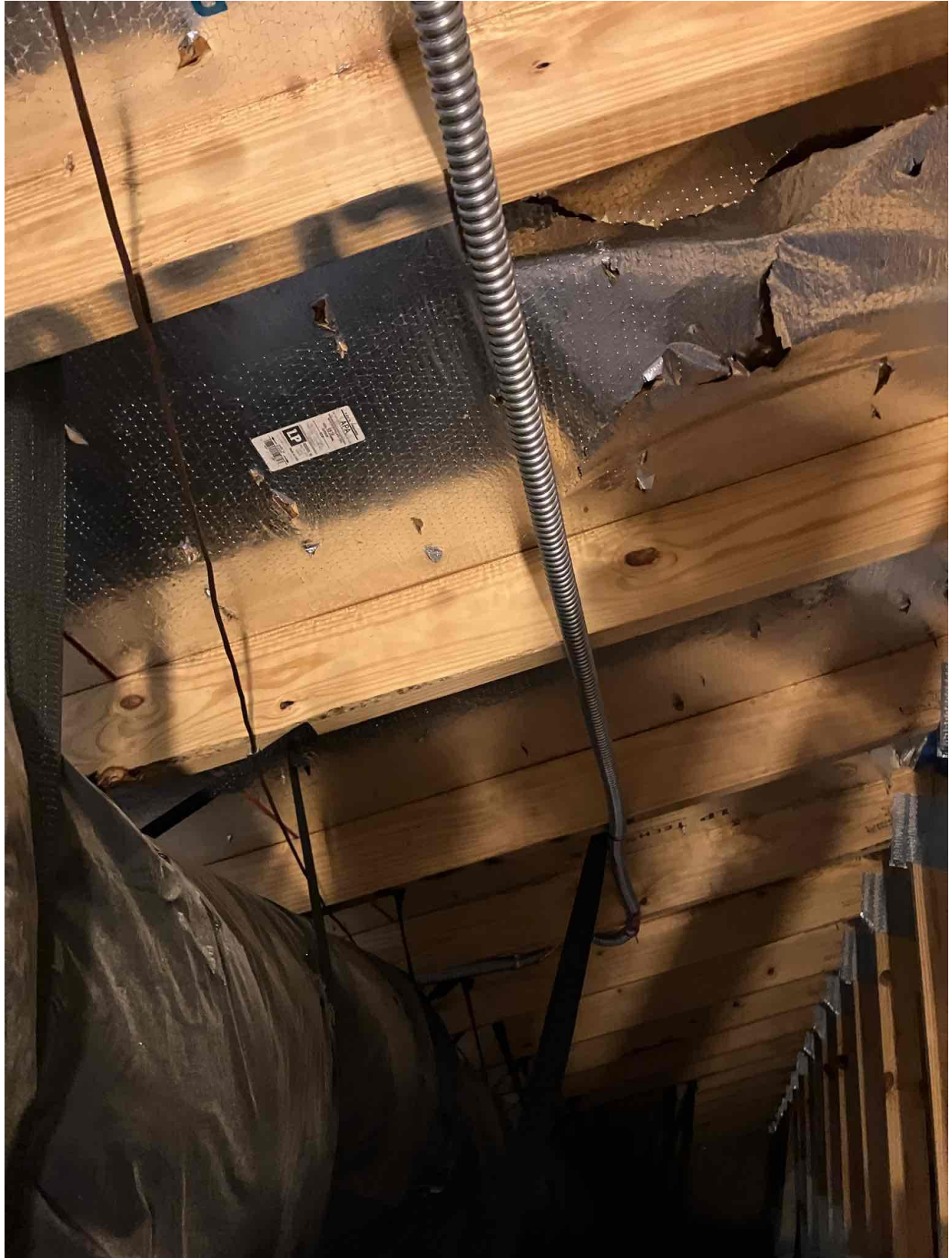














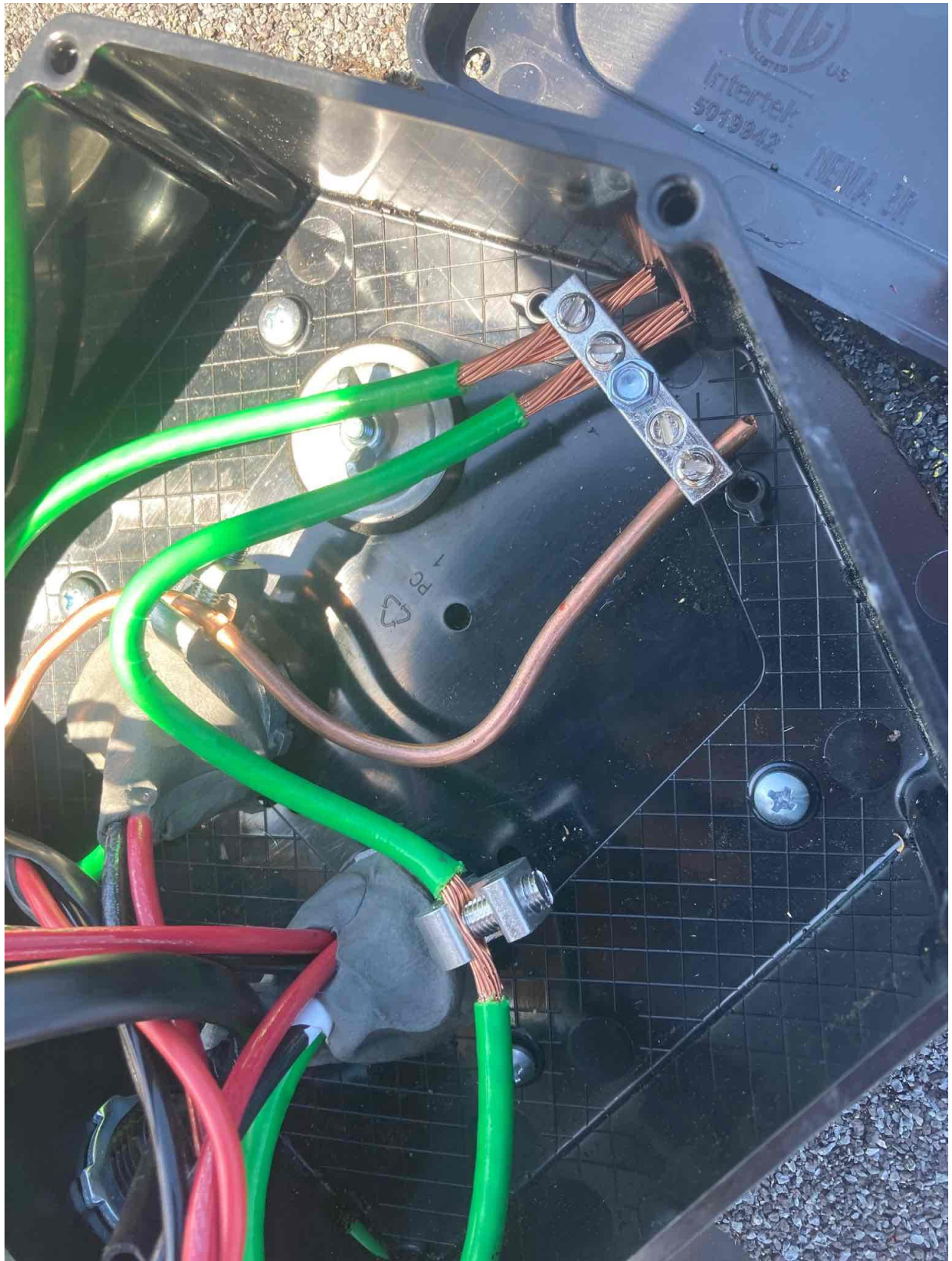


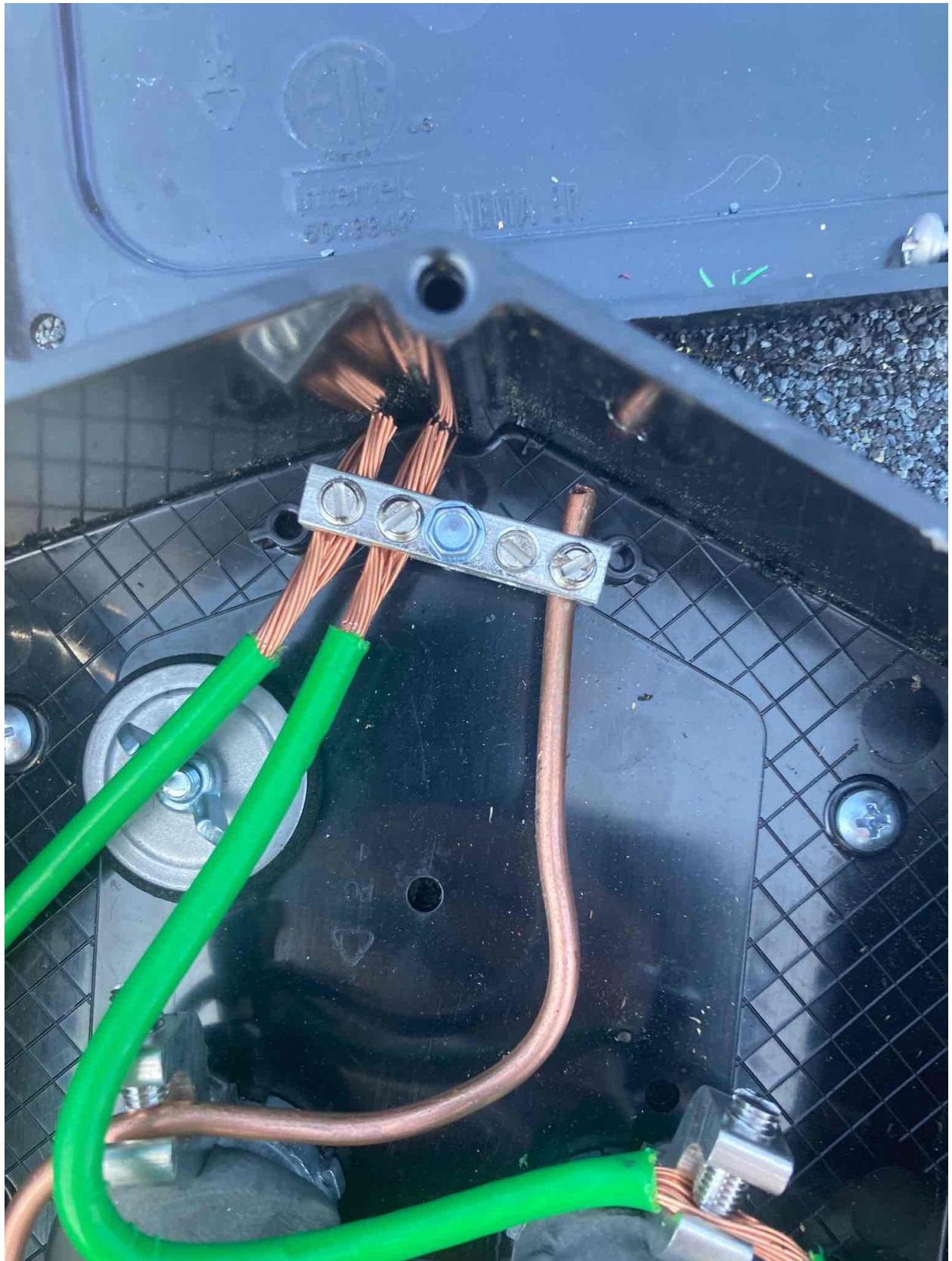




WARNING: PROHIBITED TO USE FOR ELECTRICAL PURPOSES







Combiner LED & buttons quick reference guide

Lightless communication LED

- LED is lit when communication is successful.
- LED is off when communication is not successful.
- LED is off when the system is in a fault state.
- LED is off when the system is in a maintenance mode.

AP mode LED

- LED is lit when the system is in AP mode.
- LED is off when the system is not in AP mode.

AP mode button

- Push to enter AP mode.
- Push to exit AP mode.

Power production LED

- LED is lit when power is being produced.
- LED is off when power is not being produced.

Device communication LED

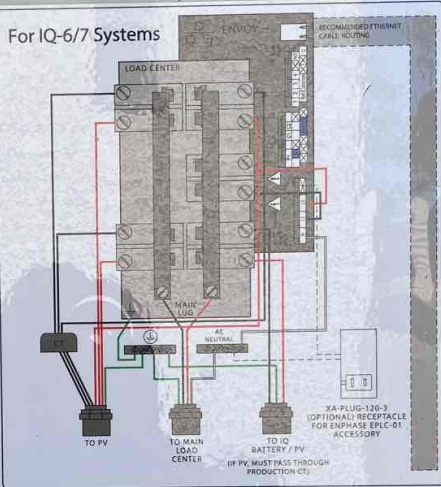
- LED is lit when the device is communicating.
- LED is off when the device is not communicating.

Device scan button

- Push to scan for devices.

NOTES:

- LEDs are not lit when the system is in a fault state.
- Buttons are not lit when the system is in a maintenance mode.



ENPHASE

IQ Combiner 3 ES

Photovoltaic
Combiner Box
X-IQ-AM1-240-3-ES

Electrical ratings

Voltage: 240VAC, 60Hz
DC Breakers: 80A MAX (combined)
DC Inputs: 64A MAX (combined)
Output: 65A MAX, 90A MAX (w/OCOP)
Temperature: 60°C MAX ambient
FOR DC BREAKERS USE ONLY EATON BR SERIES

S/N:

P/N:

Dedicated solar and DG Combiner Box - do not add loads. 10 AMP 10 AMP OR 15 AMP ENVOY BREAKER NOT USED FOR BACKFEED

Connection	Wire Size	Terminal
DC Breaker	14-10 AWG	2.2 Nm (20 lb-in)
	8 AWG	2.8 Nm (25 lb-in)
	6-4 AWG	3.0 Nm (27 lb-in)
AC Circuit Breaker only	4-10 AWG	5.0 Nm (45 lb-in)

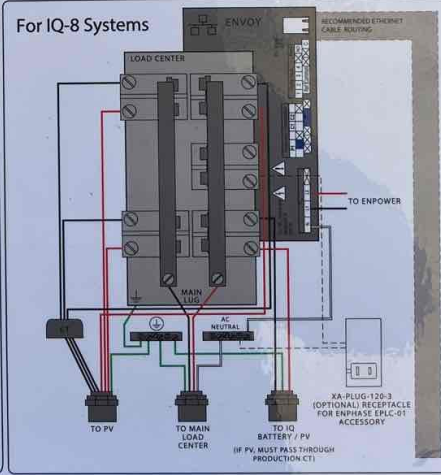
Neutral and ground

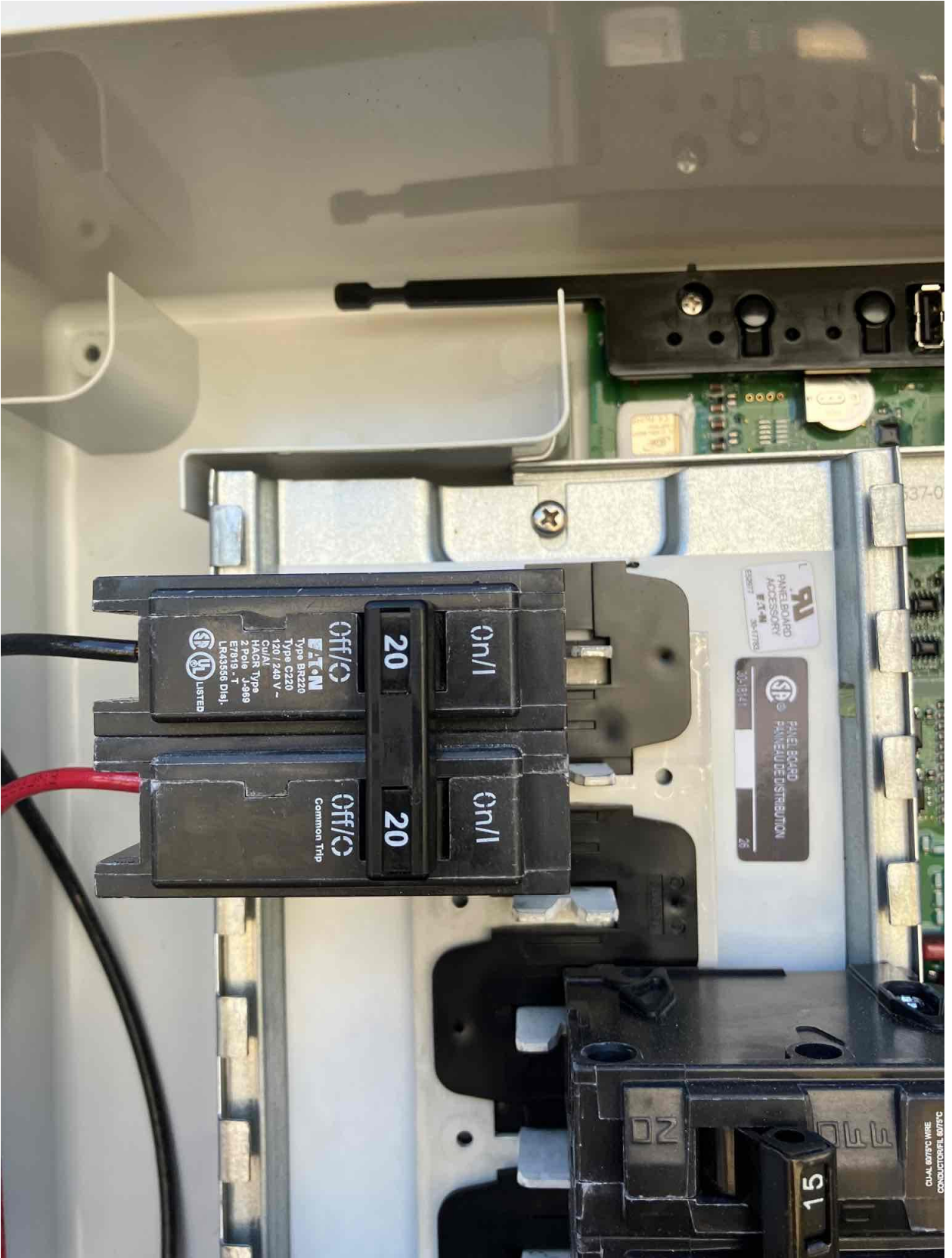
Large screw	14-10 AWG	5.0 Nm (45 lb-in)
Small screw	6-4 AWG	2.2 Nm (20 lb-in)
Main lug	10-4 AWG	5.0 Nm (45 lb-in)
	3-20 AWG	5.6 Nm (50 lb-in)

Copper conductors only, rated min. 75°C. Follow NFPA 70 (NEC), or CSA C22.1, part 1, and all local codes.

For DC Breakers larger than 20A, use wire insulated for 90°C based on 75°C ampacity.

Designed in California and New Zealand
Made in Mexico





UL LISTED

Common Trip

20

on/I

EATON

Type BR220

Type C220

120/240 V

2 Pole

14989

E7019 - T

LR43566 D1e1

OFF/O

20

on/I

PANEL BOARD ACCESSORY

EATON

30-914

PANEL BOARD

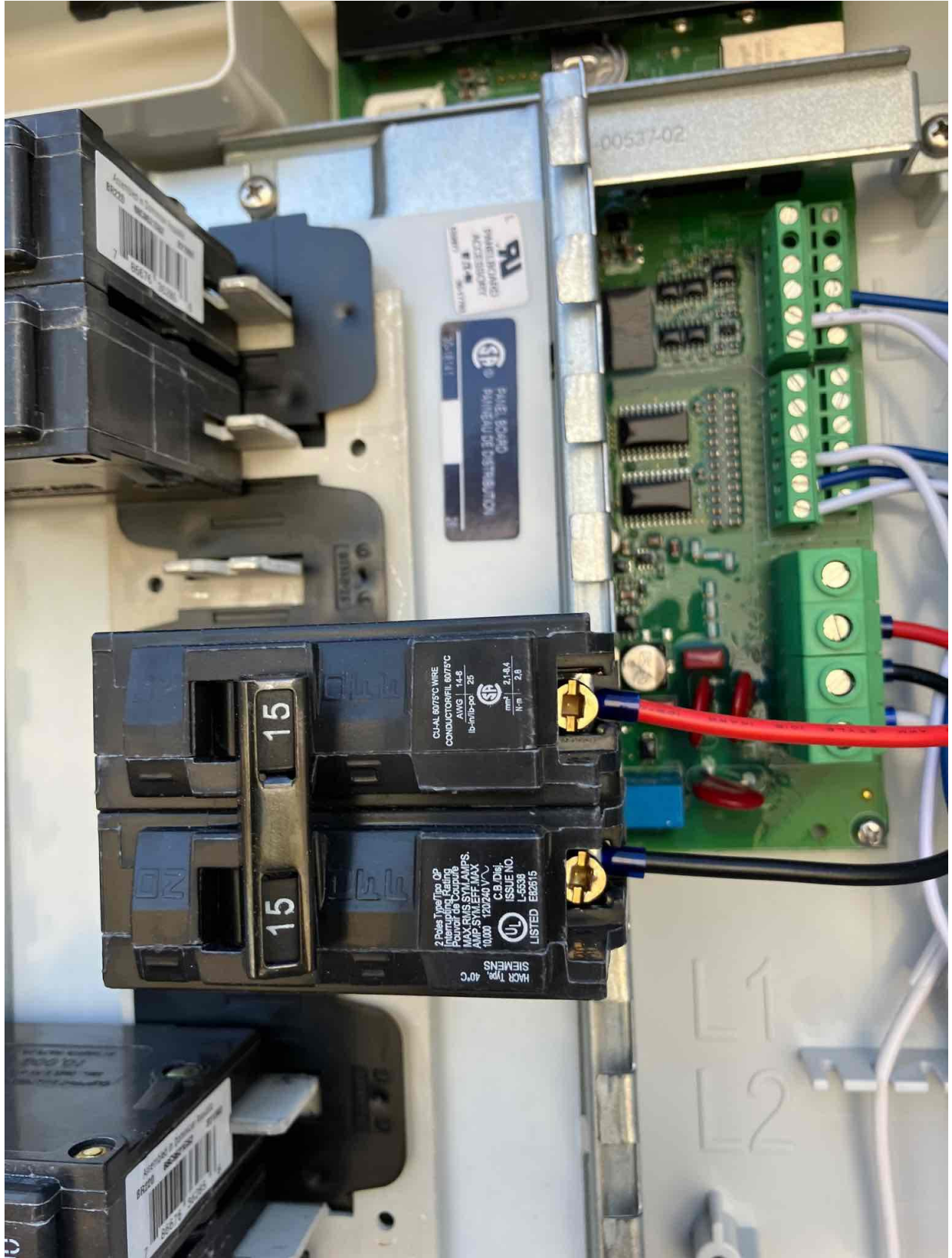
PANNEAU DE DISTRIBUTION

26

15

CHAL. 6070°C WIRE

CONDUCTEUR 6070°C



00537-02

15

15A

15A

SIEMENS
HMCR Type 40°C

2 Pole Type/Type OP
Interruption Rating
Puissance de Coupure
MAX. CABLE SIZE MAX.
10.00 120/240 V~

CU-AL 80/5°C WIRE
CONDUCTOR/RIL 80/5°C
AWG 14-8
lb-in/tp-25

LISTED E22615

C.B.D./dél.
ISSUE NO.
L-5538

mm² 2,1-8,4
In mm² 2,8

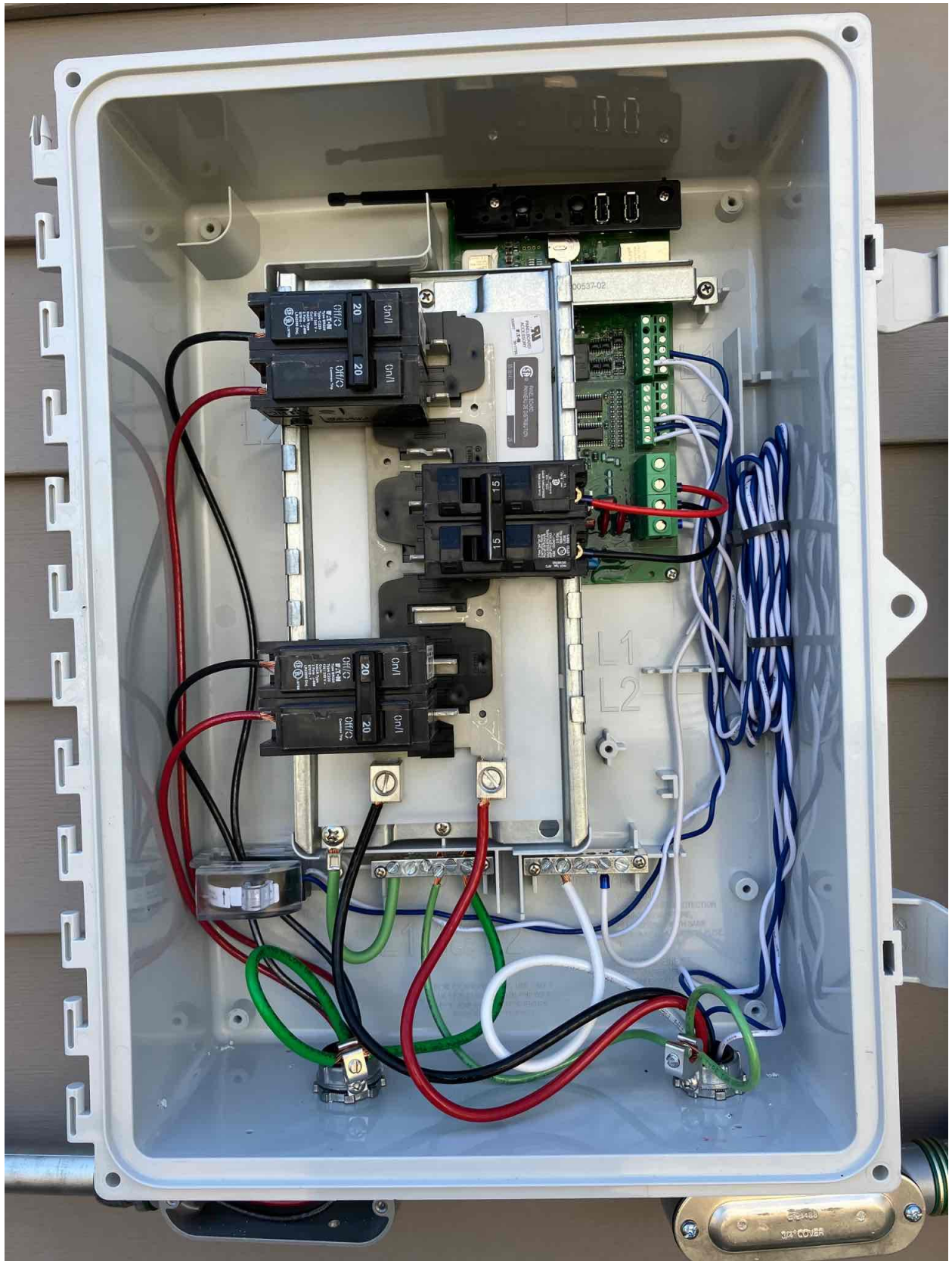
15

15

15

L1

L2







35

ON

35

ON

TRIP

10KA

120/240V~

EATON

Type CH

SOLAR PV BREAKER
BREAKER IS BACKFED
DO NOT RELOCATE
FCDLABELS.COM 02-070



EATON
Circuit Breaker

CSR 25k

200 A 2 Pole
120/240 V ~ 60Hz 40°C

Cat. CSR2200N

Style 7803C07G83

Interrupting Capacity
RMS Sym. Ampere

Volts 120/240 ~ 25

Terminal Wire Size 2-30q

Terminal Wire Size 2-30q

Terminal Wire Size 2-30q

Terminal Wire Size 2-30q

Terminal Wire Size 2-30q

Terminal Wire Size 2-30q

Terminal Wire Size 2-30q

Terminal Wire Size 2-30q

Terminal Wire Size 2-30q

Terminal Wire Size 2-30q

Terminal Wire Size 2-30q

Terminal Wire Size 2-30q

Terminal Wire Size 2-30q

Terminal Wire Size 2-30q

Terminal Wire Size 2-30q

Terminal Wire Size 2-30q

Terminal Wire Size 2-30q

Terminal Wire Size 2-30q

Terminal Wire Size 2-30q

Terminal Wire Size 2-30q

Terminal Wire Size 2-30q

Terminal Wire Size 2-30q

Terminal Wire Size 2-30q

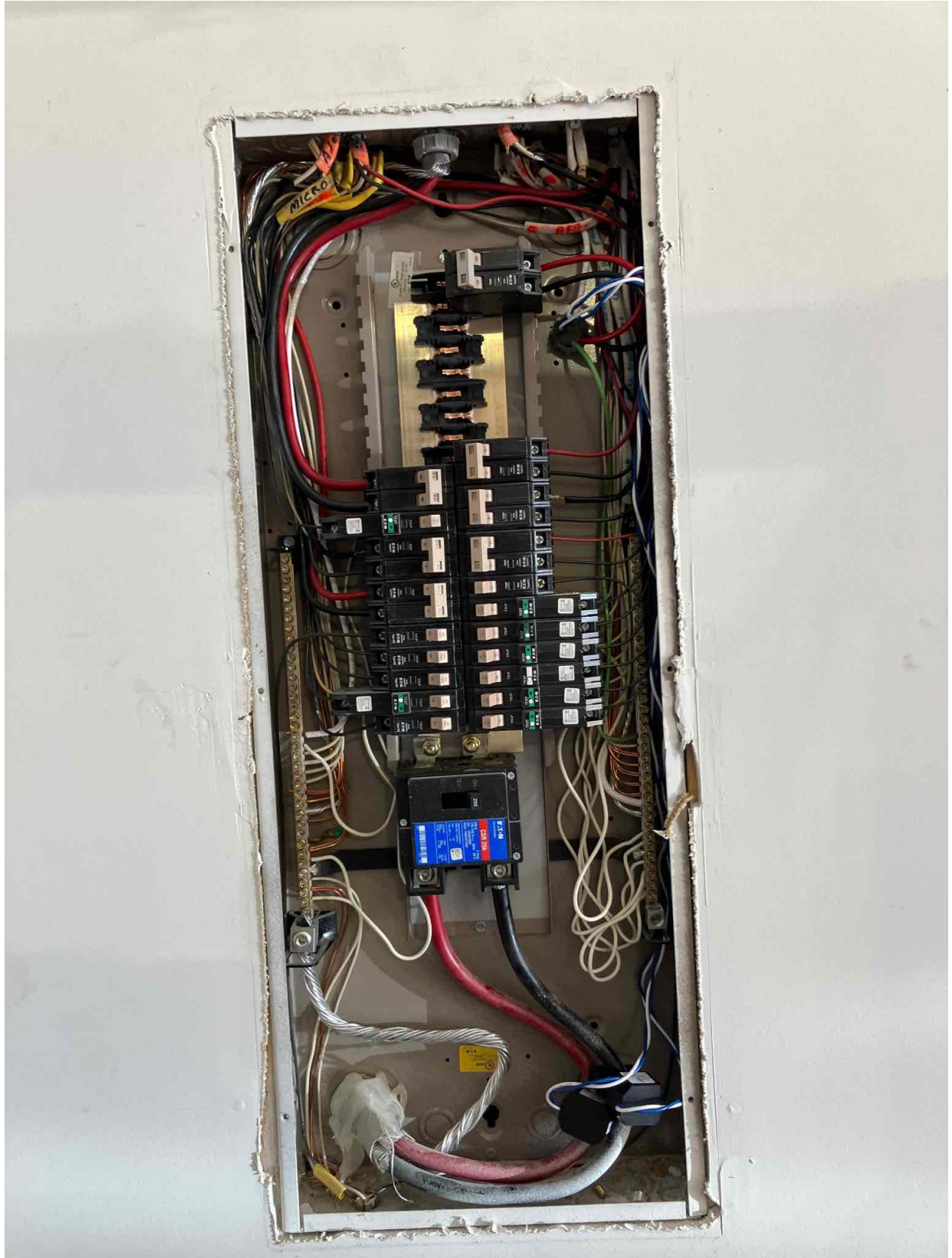
Terminal Wire Size 2-30q

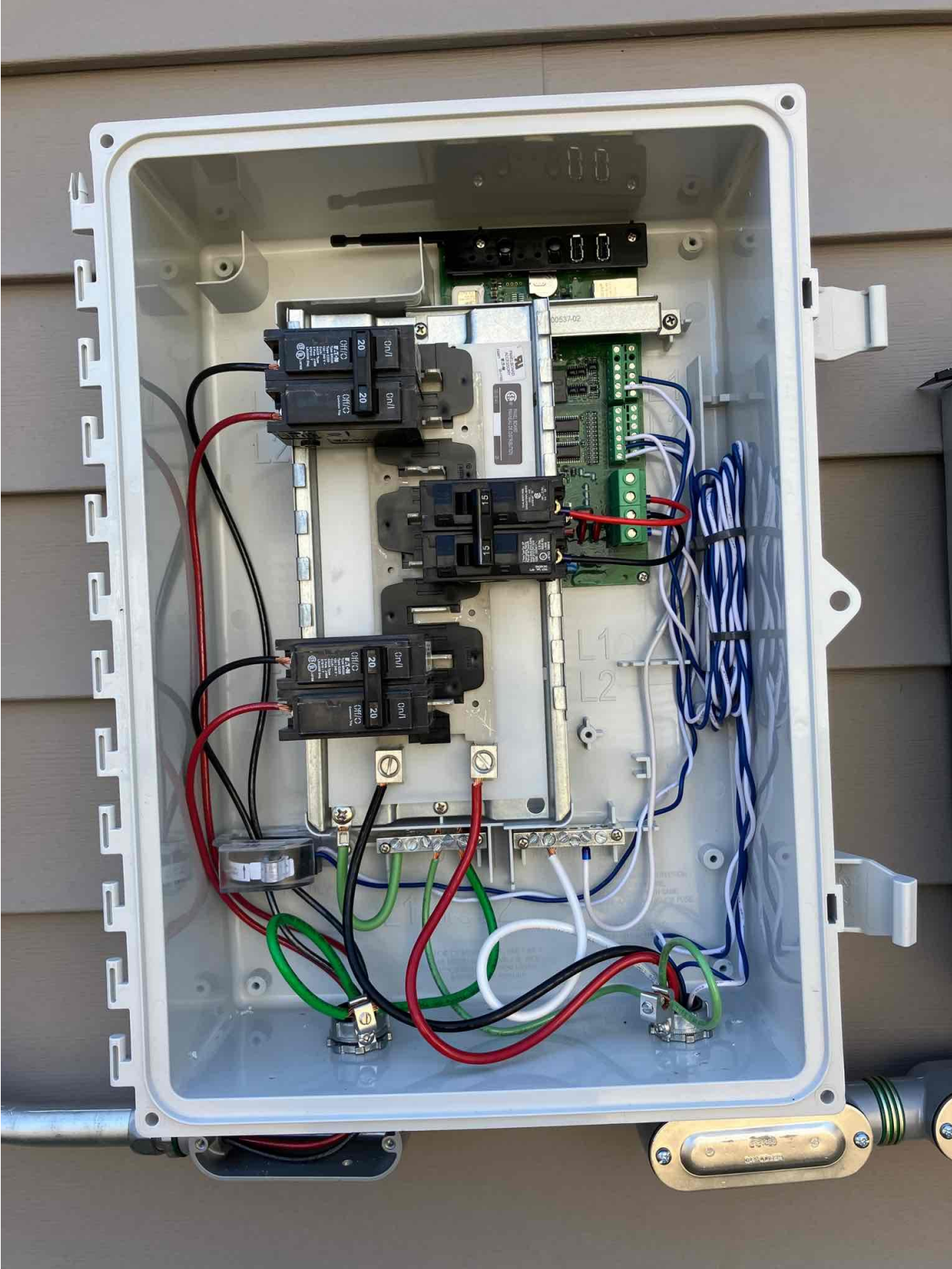
Terminal Wire Size 2-30q

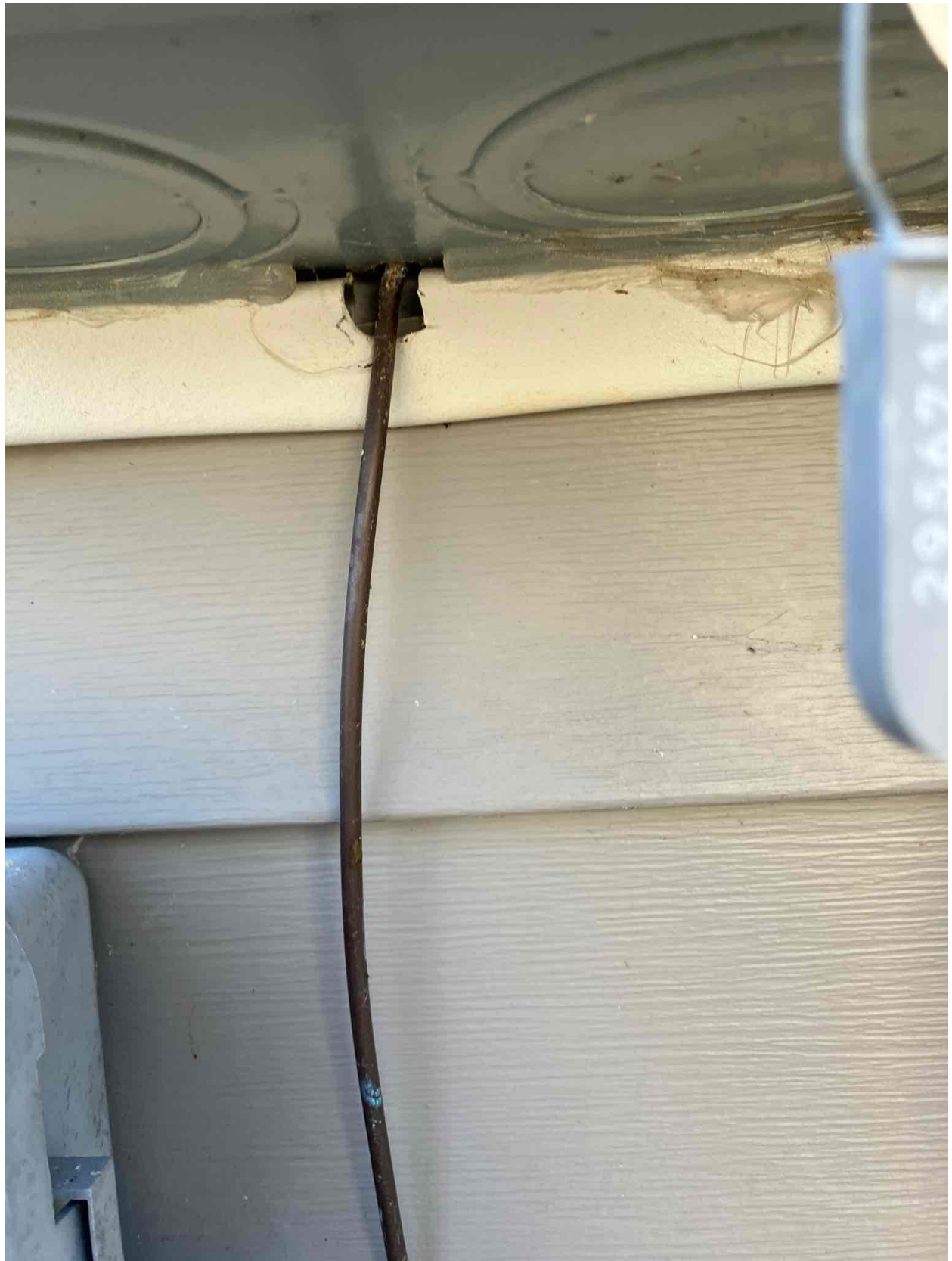
Terminal Wire Size 2-30q

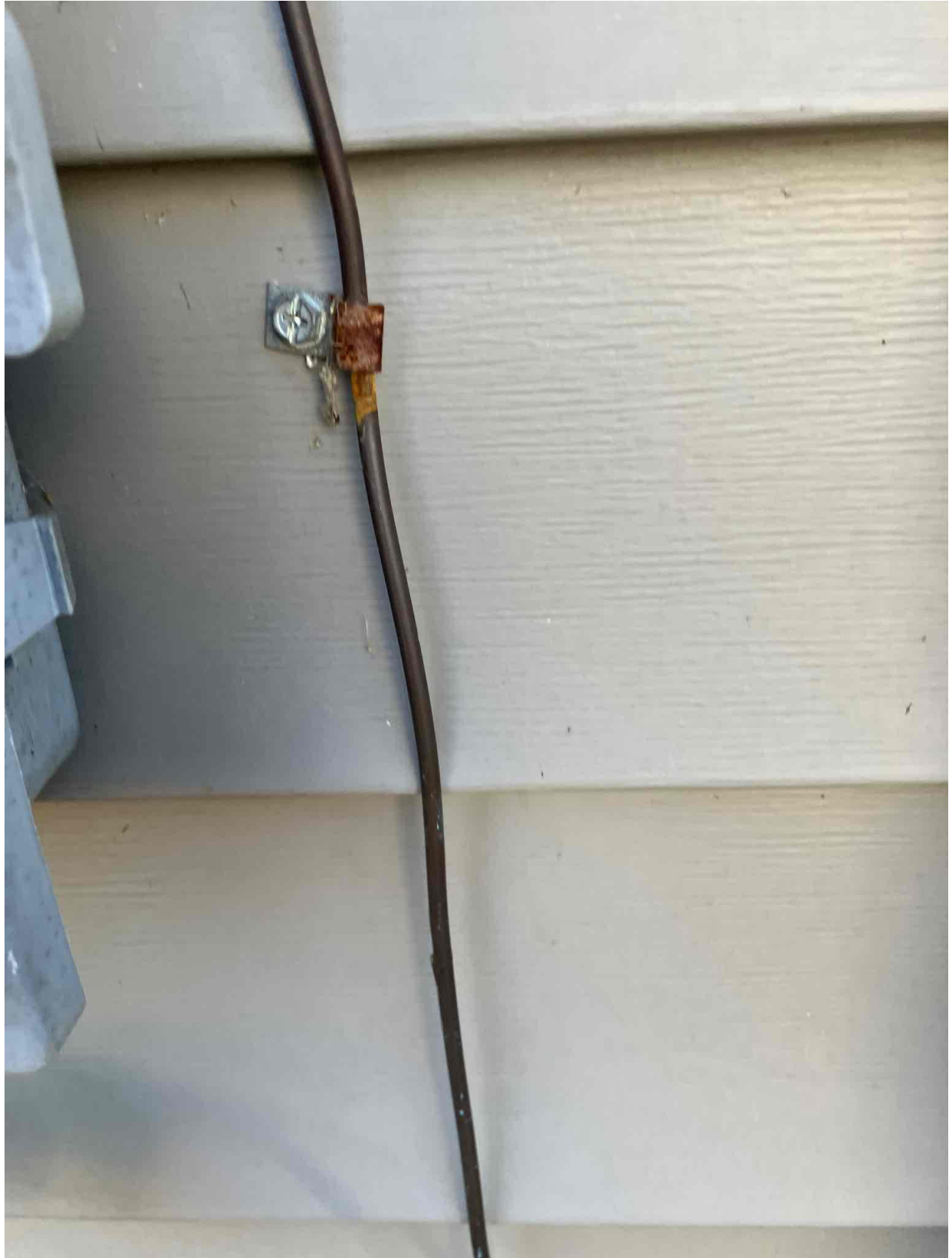
ON
TRIP
OFF
200

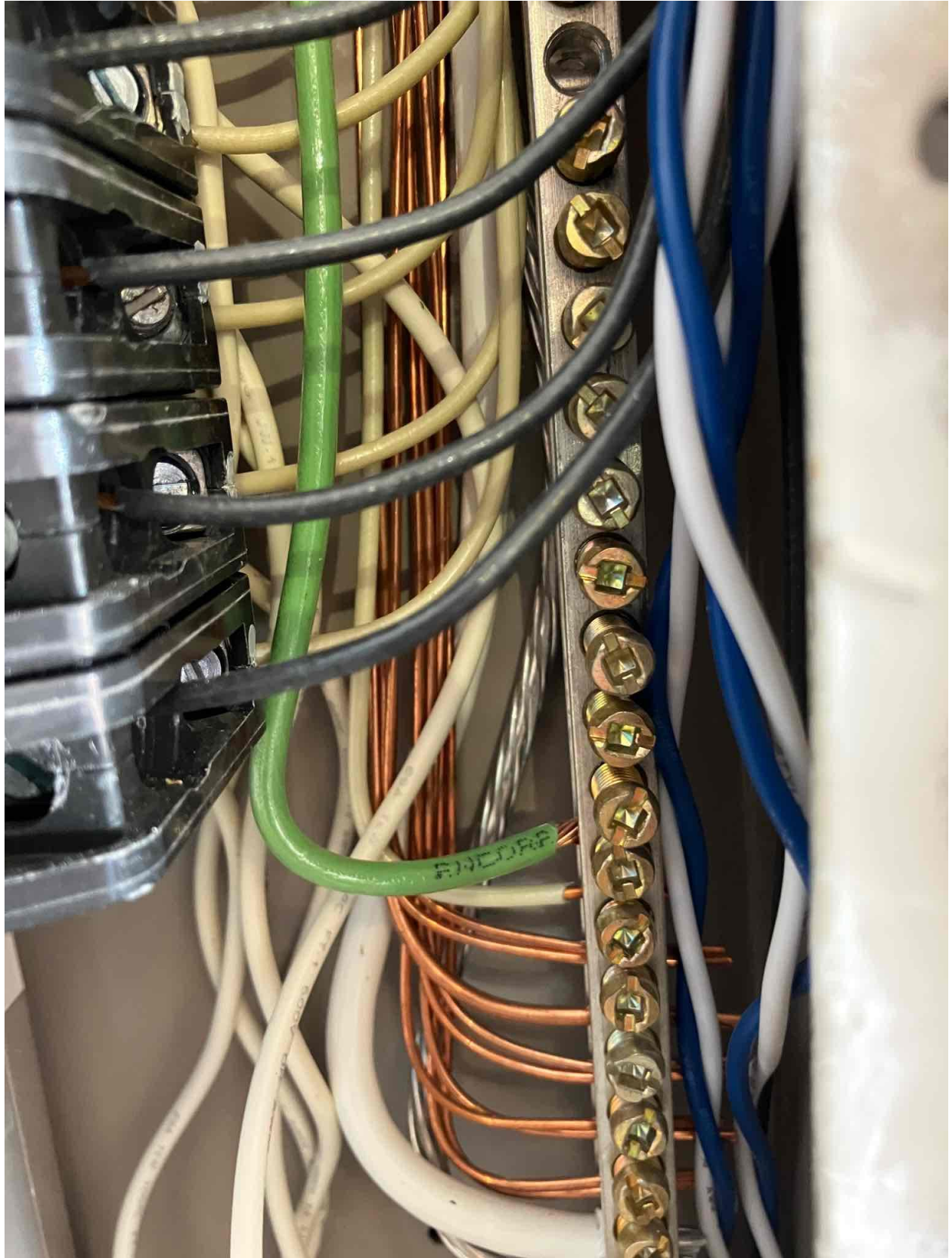
68C
14233
1805



















MARK UP KEY

1-10

11-20

21-30

31-40

41-50

51

202240142186 883 - 01374

202240145765 883 - 01374

202240141020 883 - 01374

1

202240145006 883 - 01374

202240136739 883 - 01374

202240109798 883 - 01374

2

202240143181 883 - 01374

202240129794 883 - 01374

202240112719 883 - 01374

3

202240143242 883 - 01374

202240144784 883 - 01374

202240109880 883 - 01374

4

202240135421 883 - 01374

202240131602 883 - 01374

5

202240145746 883 - 01374

202240139353 883 - 01374

6

202240146070 883 - 01374

202240145008 883 - 01374

7

202240131461 883 - 01374

202240112437 883 - 01374

8

202240131451 883 - 01374

202240111647 883 - 01374

9

202240142731 883 - 01374

202240139462 883 - 01374

10

Jern
689-2

