



ICCID:8901882004770139976F



Data plan will start on the earlier of:
- Kit installation date (first transmission)
- Date: 26-Sep-22

Made in Vietnam

solaredge



Cellular Plug-in 5y plan, SetApp, Resi, SP4, US

PN: CELL-B-R05-US-5-S2

Qty: 1



SN: SV3822-1709013DF-F2



Made in Vietnam

solar edge SE7600H – US
Grid Support Utility Interactive
Non – Isolated Photovoltaic Inverter

Operating Voltage Range	270 – 480Vdc
Max Input Current	20A _{dc}
Max Continuous Output Power	7600W _{ac}
Voltage Min – Nom – Max	211 – 240 – 264V _{ac}
Max Continuous Output Current	32A _{ac}
Max Output Fault Current	72A _{ac}
Max Utility Backfeed Current	0A _{ac}
Frequency Min – Nom – Max	59.3 – 60.0 – 60.5Hz
Output Power Factor	+/- 0.85 – 1
Max Ambient Temperature	60 C
Enclosure	IP65 / Type 3R
With integrated ground fault protection per NEC 690.35 (C)	
Type 1 Photovoltaic Arc – Fault Circuit – Protection	
COMPLIES WITH SUPPLEMENTAL INTERCONNECTION REQUIREMENTS	
Wi – Fi Password: Ld8r7YHy	
Activation: aLif 76vs 0stN 2ycs 9eL3 s7nG e0Y =	

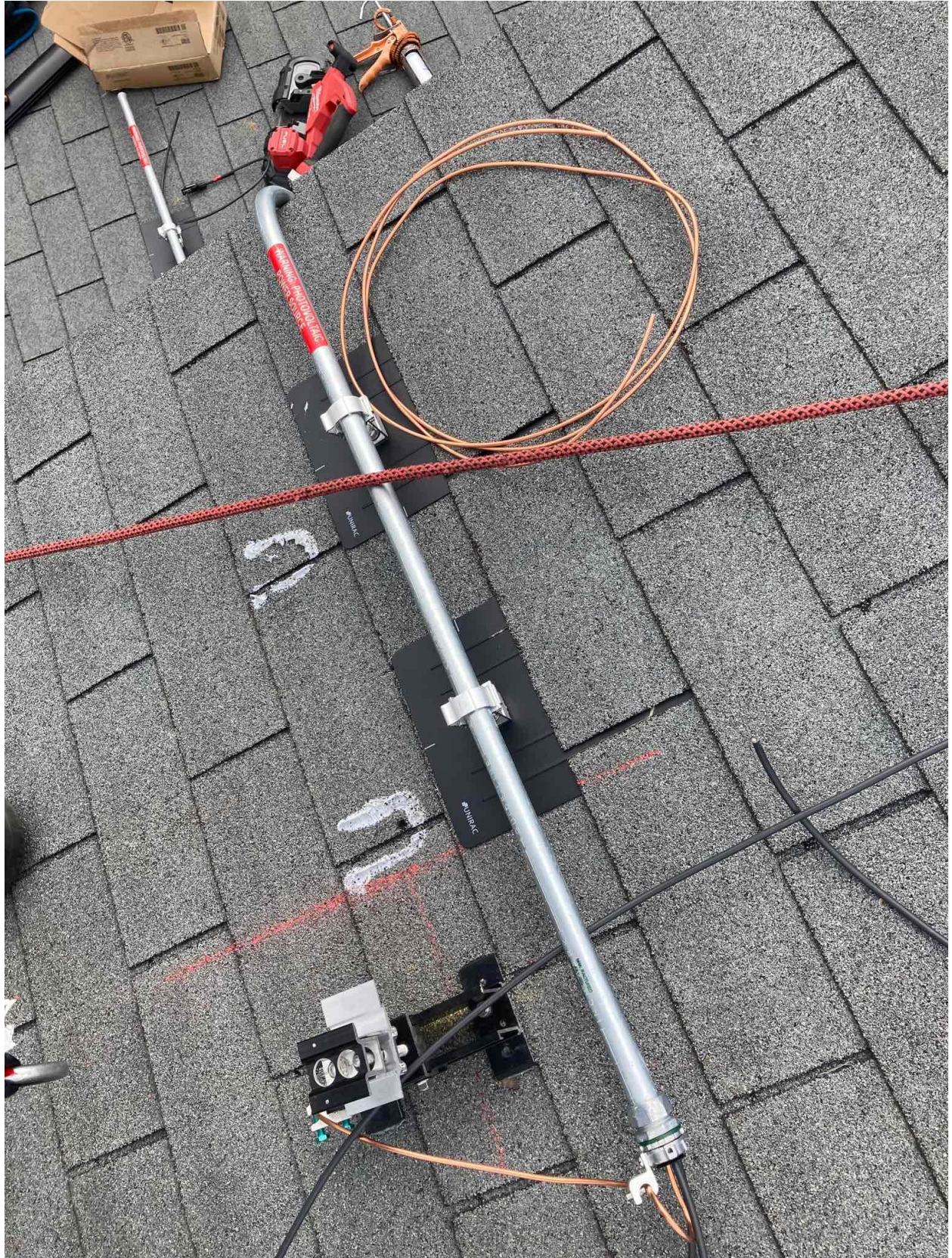
WiFi MAC:
84:D6:C5:24:6E:66
ZigBee MAC:



PN: SE7600H – US000BNI4
SN: SV2522 – 0740C1D4E – EB





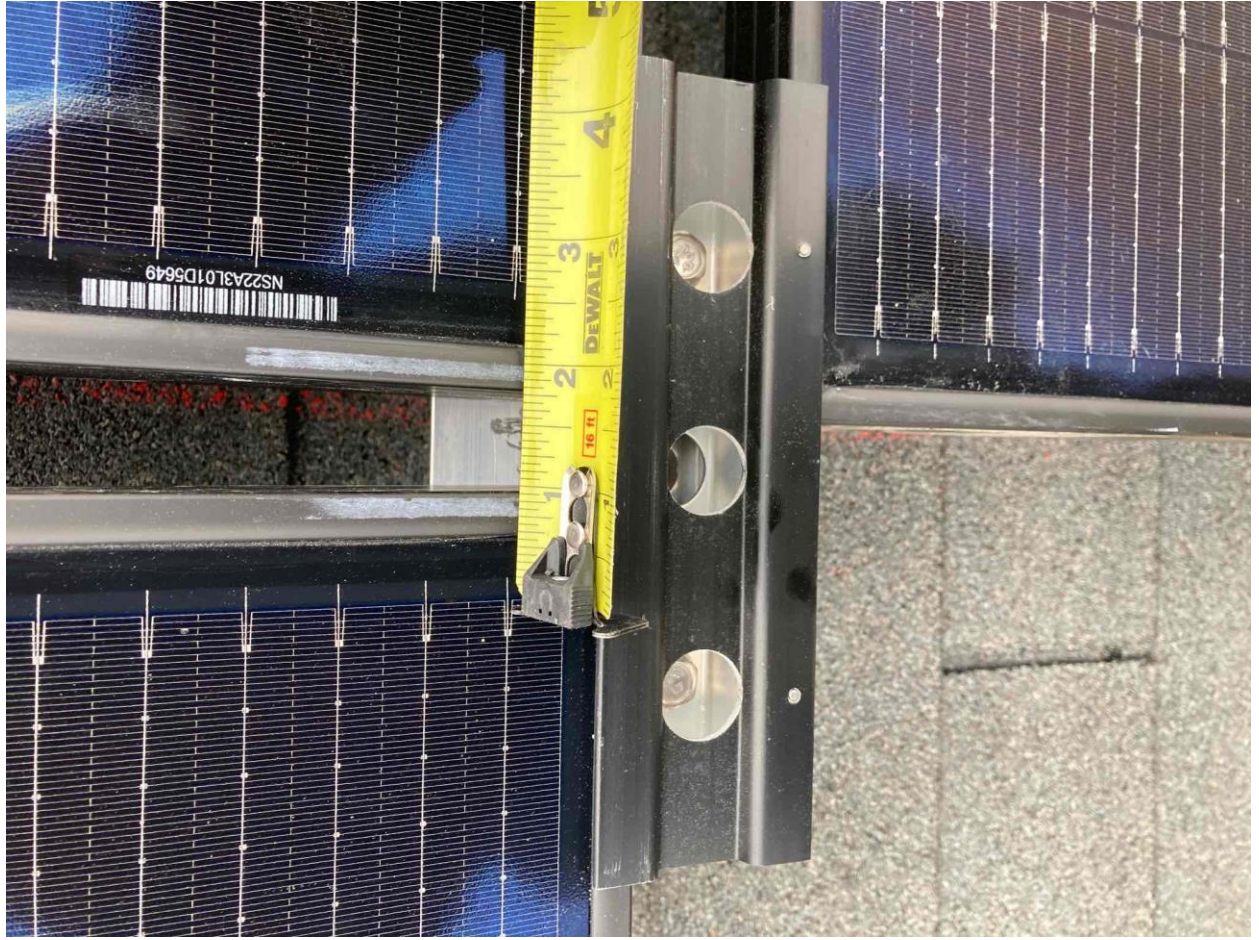












NS22A3L01D5649

DEWALT
16 FT
1 2 3 4



NS22A3L01D7156



Model Type : FF-MP-BBB-400

Nominal Maximum Power	(Pmax):	400(0-5)W
Maximum operating Voltage	(Vmp):	31.01V
Maximum operating Current	(Imp):	12.90A
Open Circuit Voltage	(Voc):	37.04(±3%)V
Short Circuit Current	(Isc):	13.79(±3%)A
Maximum System Voltage	:	1500V
Maximum Series Fuse Rating	:	25A
Fire Rating	:	Type 1

All electrical data at Standart Test Conditions (STC): Irradiance of 1000W/m², spectrum AM1.5 and temperature of 25°C.

WARNING - ELECTRIC HAZARD



This solar module produces electrical voltage when exposed to sunlight or intense artificial lights. Proper precautions associated with electrical power systems must be taken while handling and installing this product.

PLEASE READ THE INSTRUCTION MANUAL FOR MORE INFORMATION PRIOR TO INSTALLATION.



Conforms to UL STD. US UL81730-1-2, UL81215-1, 1-11-2. Certified to CSA STD. C22.2 461730-1-2.

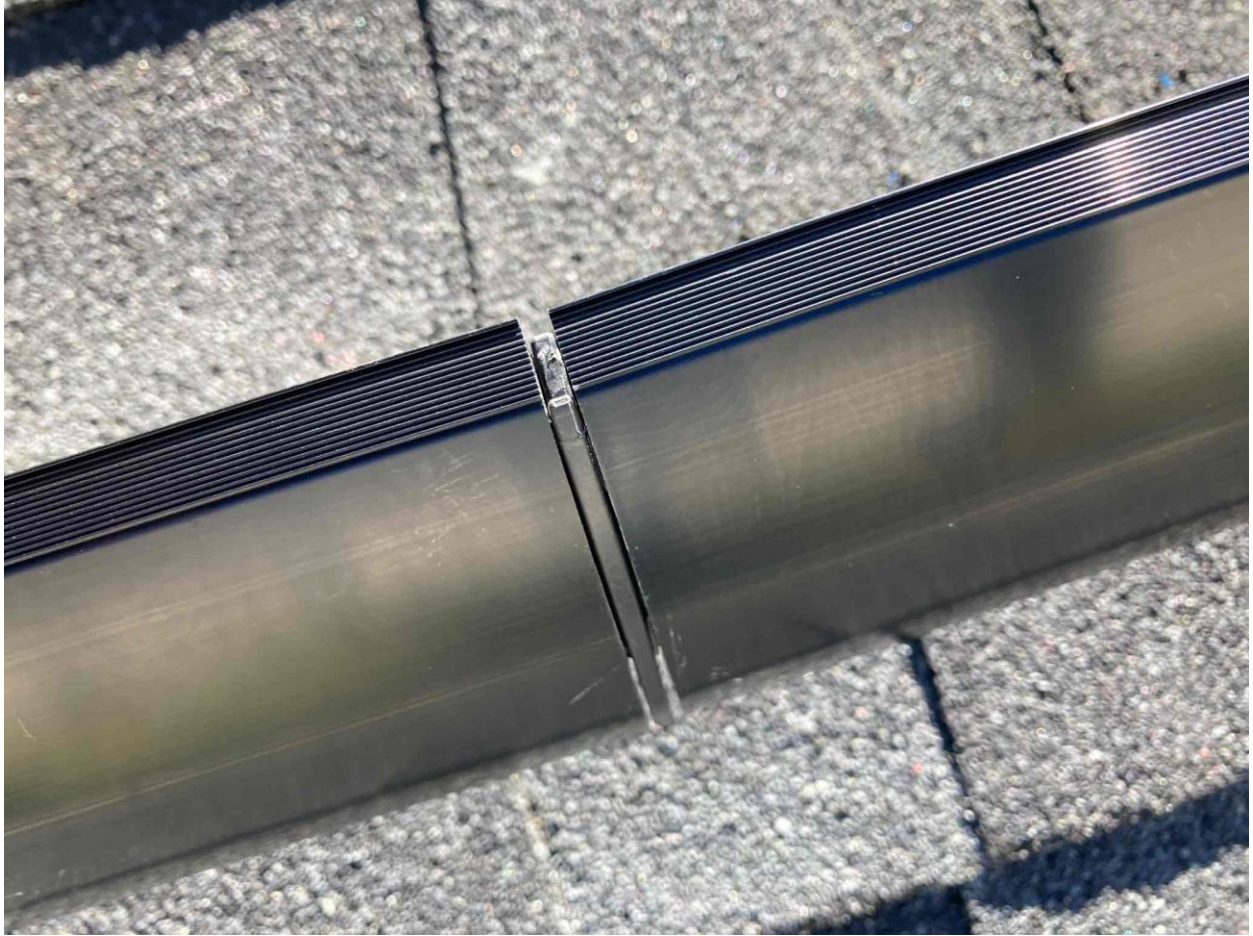
Intertek 5019057

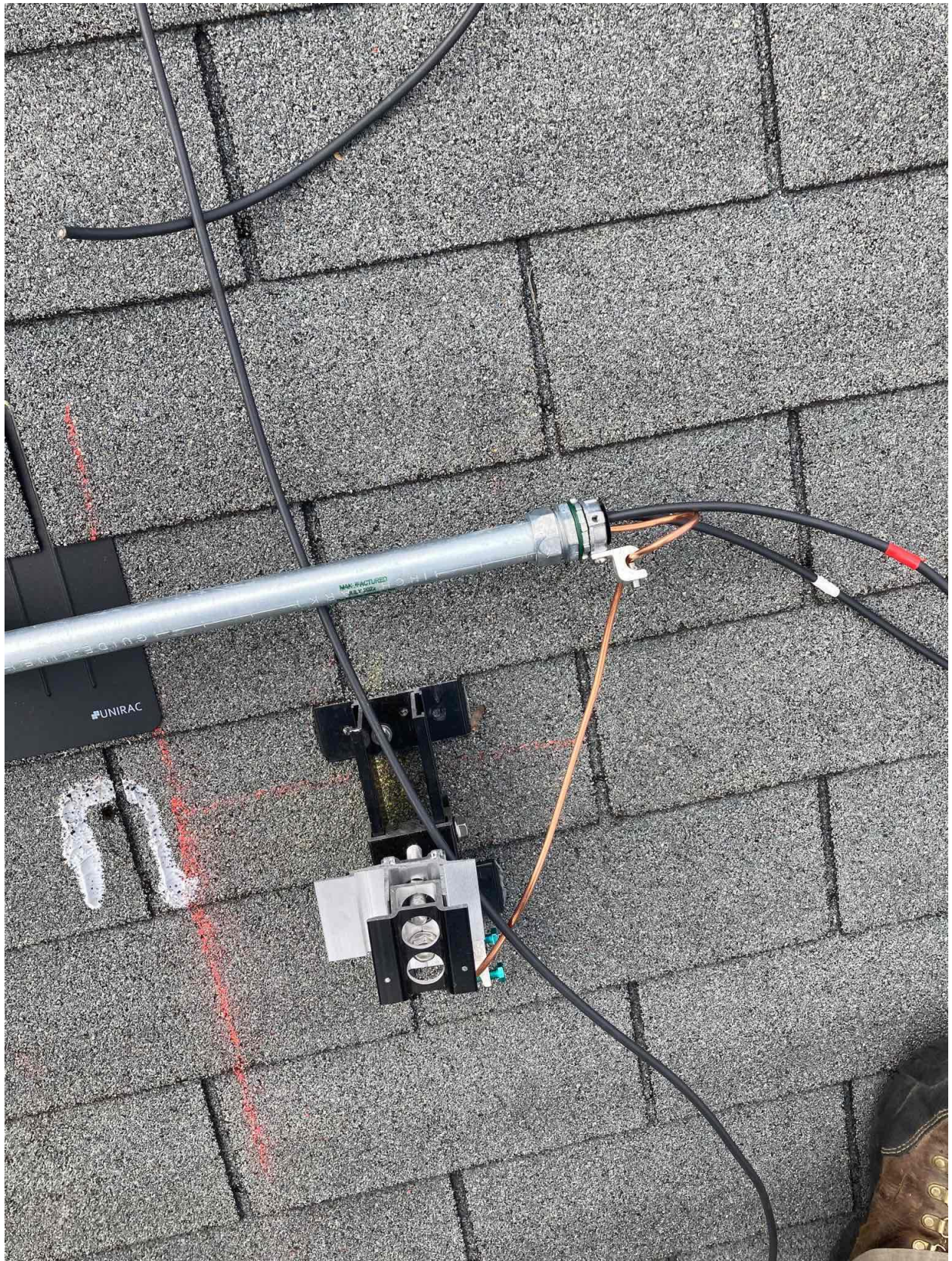
Made in Indonesia





UL 2239 Listed
Conduit mount conforms to UL 514
"Hardware for the Support of Conduit and Cable" requirements. Load rating: 30 lb (14kg); Load rating: 40 lb (18kg); Temperature rating: [-40° C to 90° C]. Suitable for wet locations. max 3.05m (10ft) support interval









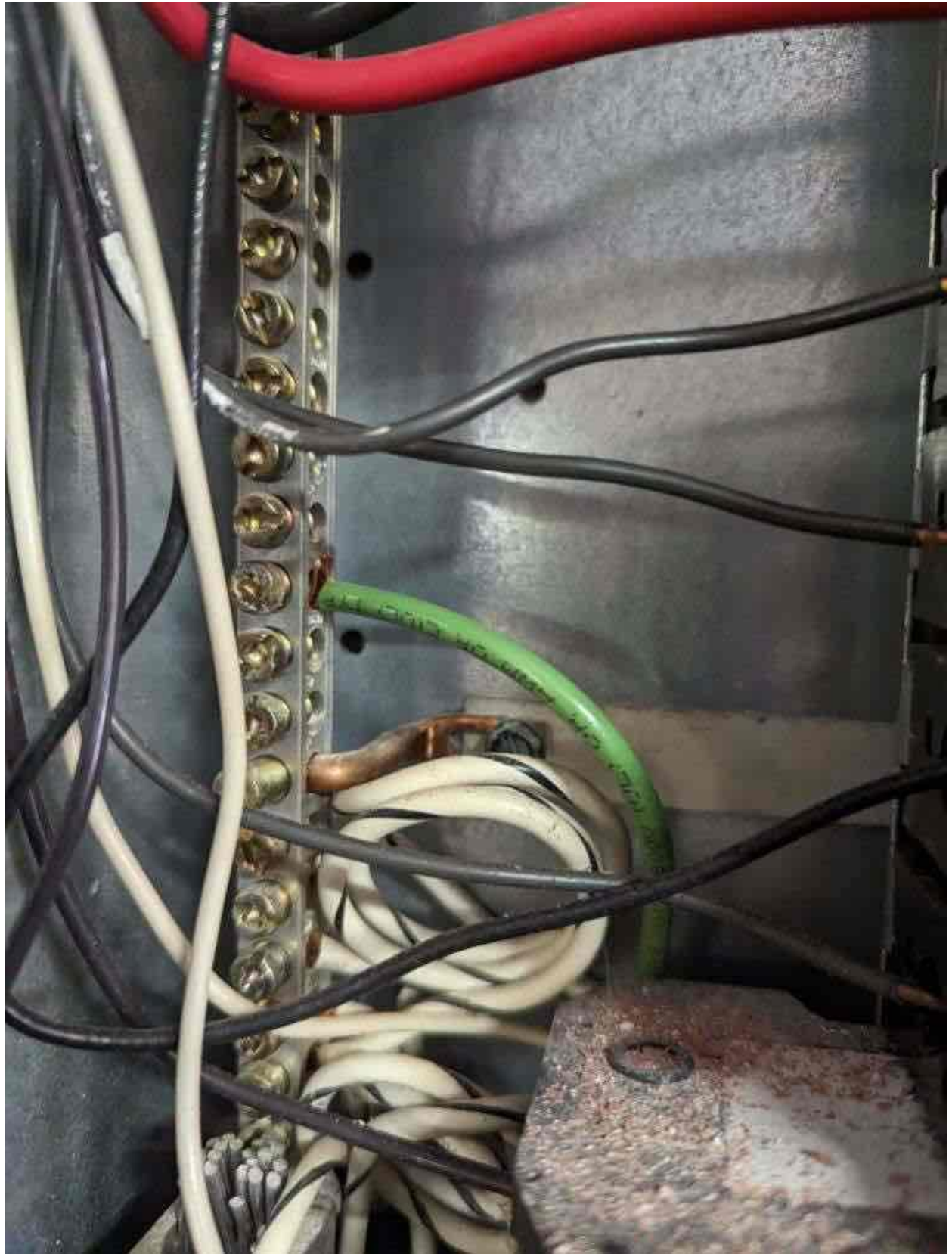
	1-10	11-20	21-30	31-40	41-50	51
1	 0158001158A-08	 0158001158A-08	 0158001158A-08			
2	 0158001158A-08	 0158001158A-08	 0158001158A-08			
3	 0158001158A-08	 0158001158A-08	 0158001158A-08			
4	 0158001158A-08	 0158001158A-08	 0158001158A-08			
5	 0158001158A-08	 0158001158A-08	 0158001158A-08			
6	 0158001158A-08	 0158001158A-08	 0158001158A-08			
7	 0158001158A-08	 0158001158A-08	 0158001158A-08			
8	 0158001158A-08	 0158001158A-08	 0158001158A-08			
9	 0158001158A-08	 0158001158A-08	 0158001158A-08			
10	 0158001158A-08	 0158001158A-08	 0158001158A-08			

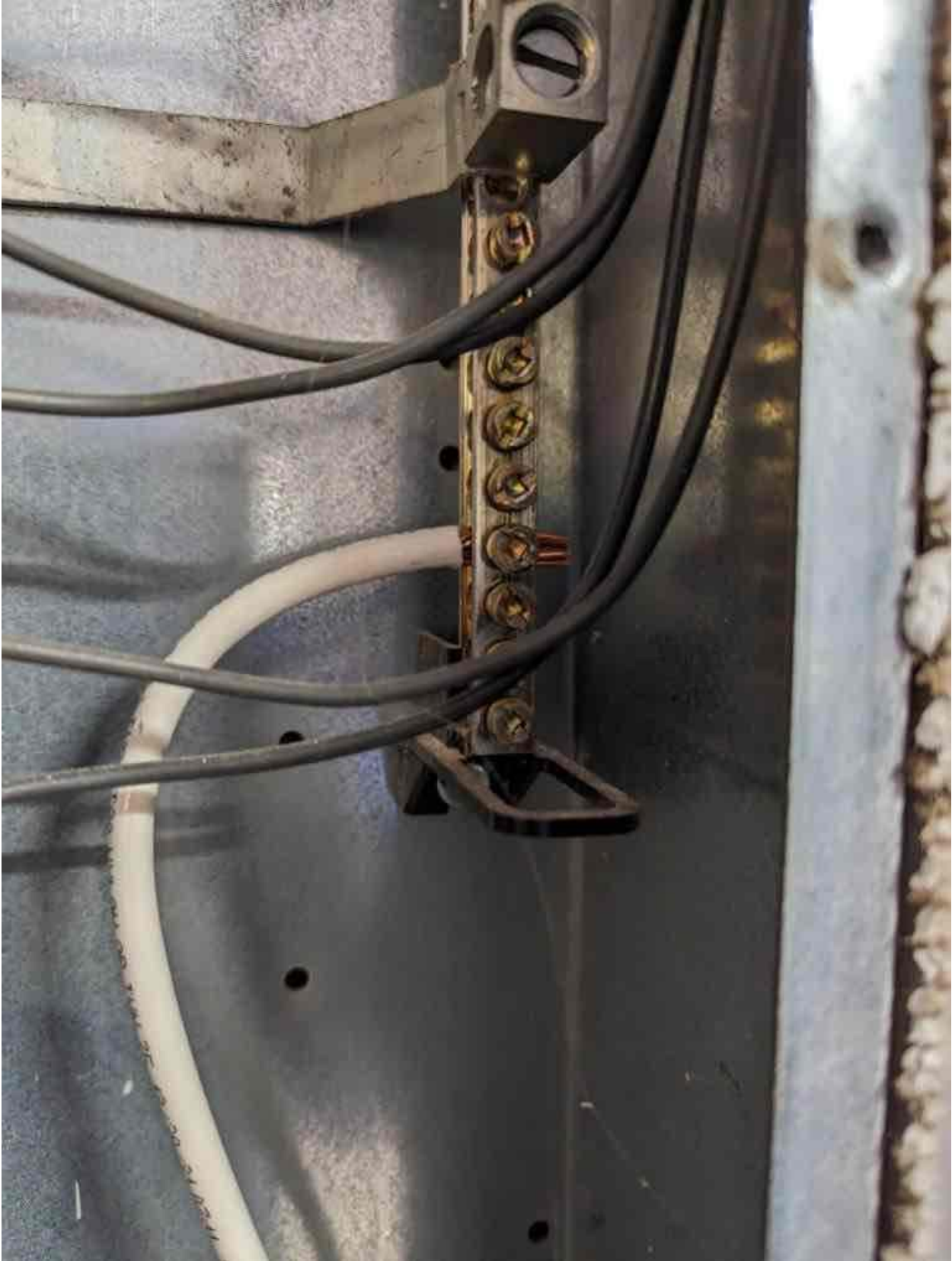


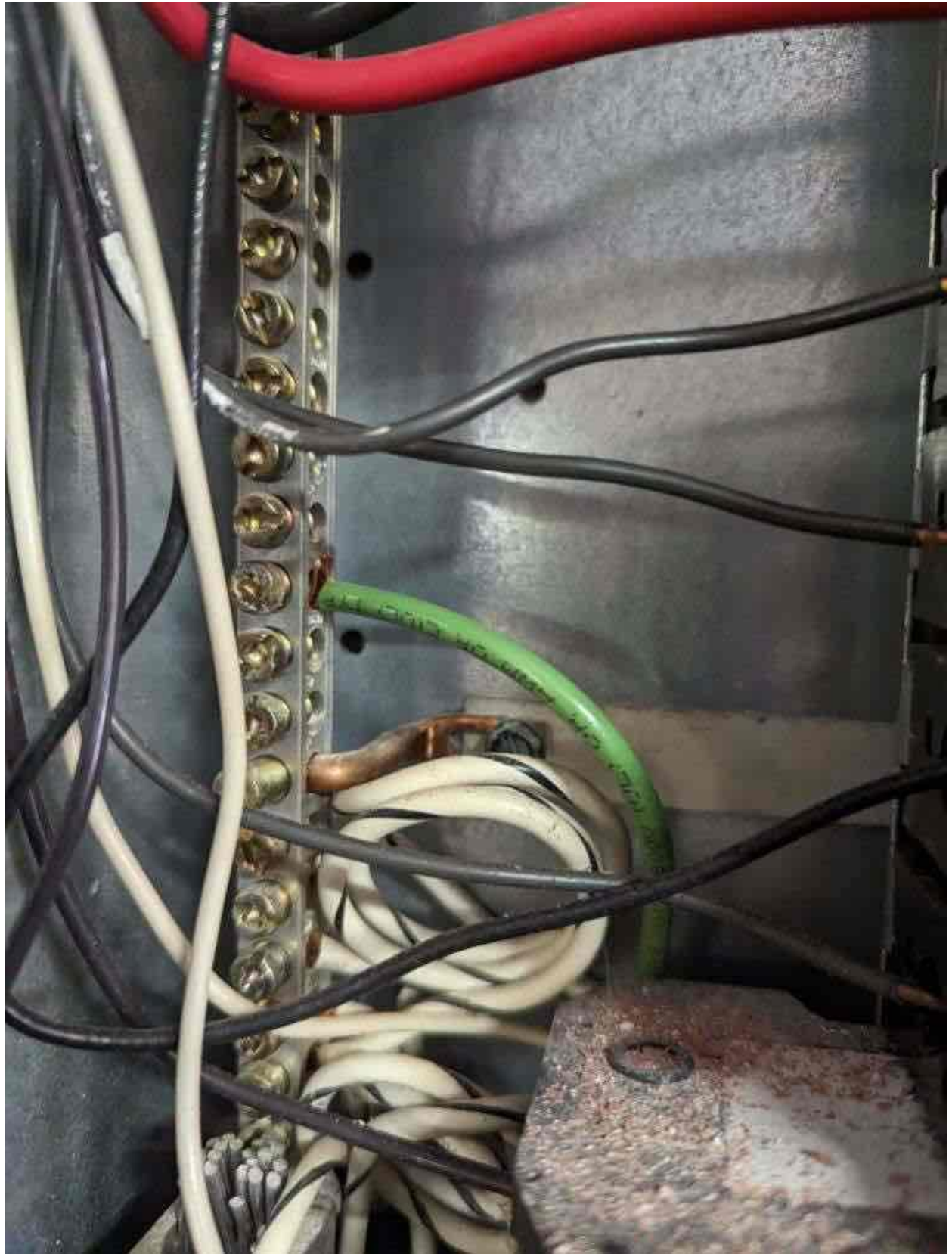


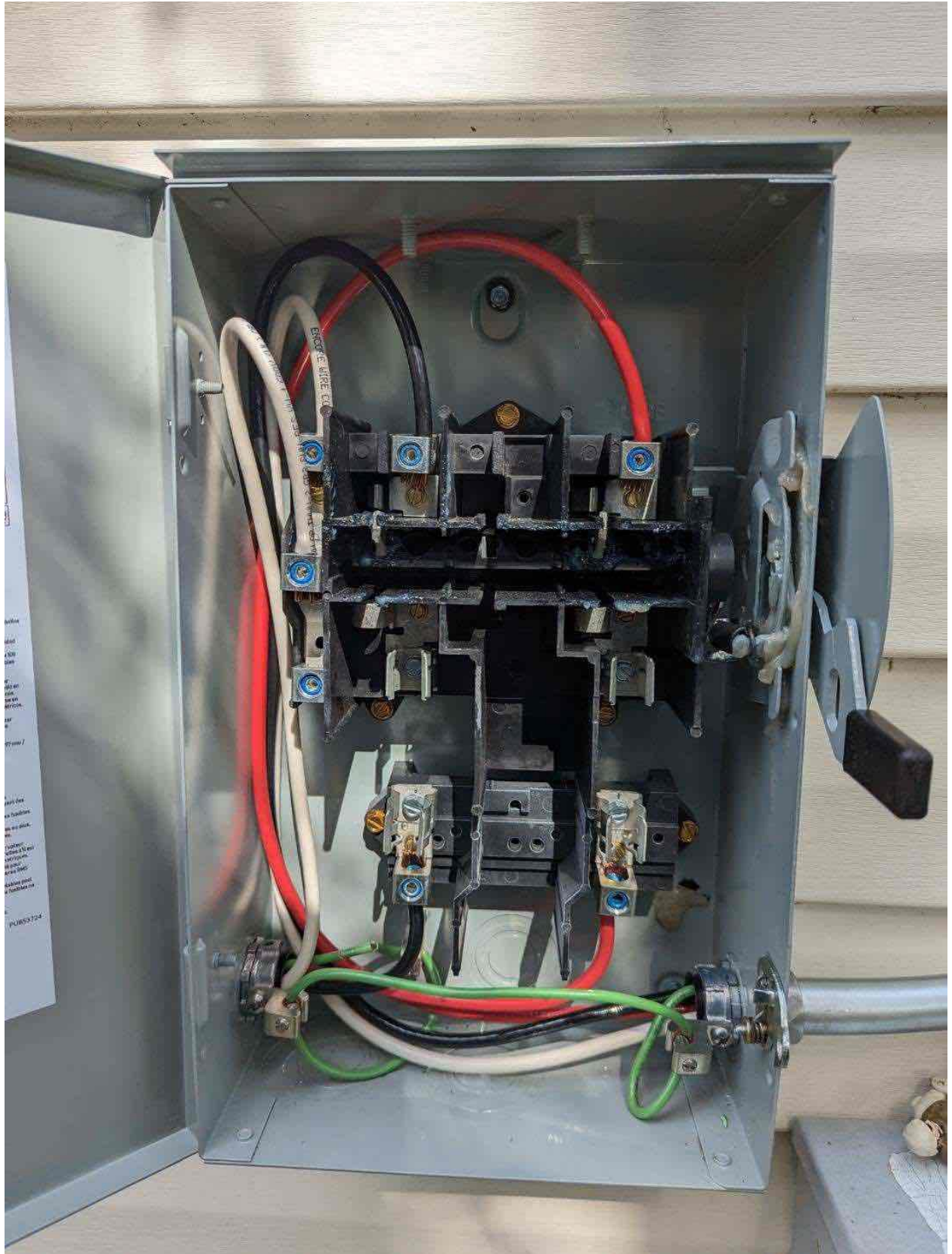
















250Vac 40 AMP

Edison

TIME-DELAY
DUAL-ELEMENT
CURRENT-LIMITING
CLASS RK5 FUSE

ECNR40

250Vac or 100V
AC IR 2000A
125 VDC 200A



