

Jimmy Ferguson

221 S. Ida St.
Coats , NC 27521









ENGINEERED, DESIGNED AND QUALITY TESTED BY Q CELLS IN GERMANY

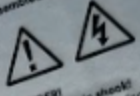
Q.PEAK DUO BLK ML-G10+ 400

Q CELLS

Assembled in USA

PERFORMANCE AT STANDARD TEST CONDITIONS*

Nominal Power* P_{nom} [W]	400
Short circuit current* I_{sc} [A]	11.14
Open circuit voltage* V_{oc} [V]	48.30
Current at maximum power I_{mp} [A]	10.77
Voltage at maximum power V_{mp} [V]	37.13
Maximum system voltage V_{ms} [V]	1000 (IEC)
	1000 (UL)
Weight	22.0 / 48.5
	kg / (lb)

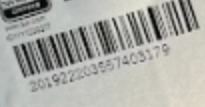
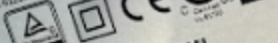


DANGER!
Risk of electric shock!
DO NOT connect or disconnect plug contacts while system is under load current. Refer to the installer and Operation Manual before installing, operating or servicing this unit.

DANGER!
Risque de choc électrique!
NE PAS connecter ou déconnecter les contacts sous charge. Consultez le manuel d'installation et d'utilisation avant installation, utilisation et entretien du produit.

Fire Rating: Class C / Type 2
Design load: 55 lb/ft²
Fuse Rating: 20 A
For field connections, use minimum #12 AWG copper wires insulated for a minimum of 90 °C

*Measurement tolerance: P_{nom} ± 3%, I_{sc} , V_{oc} ± 5% at STC: 1000 W/m², 25 ± 2 °C
AM, US according to IEC 60049-2. Data given are rated (nominal) values.



U.S. Patent No. 9,893,215
(see cells)
EMAIL: serv@q-cells.com
WEB: www.q-cells.com

Maxima Q CELLS USA Inc.
800 Texas Drive, Canyon, CA 92513, USA
Certification holder: Maxima Q CELLS GmbH









**WARNING: PHOTON
POWER SOURCE**





WARNING
PV SOURCE CIRCUIT

WARNING
ELECTRICAL SHOCK HAZARD
TERMINALS ON THE LINE AND
LOAD SIDES MAY BE ENERGIZED
IN THE OPEN POSITION

APPENDIX - E - 1 - ENERGY EFFICIENCY CERTIFICATE
NEEBS OR NEEES 402.9

Customer: *Handwritten name*
Address: *Handwritten address*
City: *Handwritten city*
State: *Handwritten state*
Zip: *Handwritten zip*

ENERGY EFFICIENCY CERTIFICATE

1. General Information	
2. Energy Audit	
3. Recommendations	
4. Summary	

ENERGY AUDIT

1. General Information

2. Energy Audit

3. Recommendations

4. Summary

Handwritten notes and signatures are present throughout the form.





