















NS22A3L01D6788



Model Type : FF-MP-BBB-400

Nominal Maximum Power	(Pmax):	400(0-5)W
Maximum operating Voltage	(Vmp):	31.01V
Maximum operating Current	(Imp):	12.90A
Open Circuit Voltage	(Voc):	37.04(±3%)V
Short Circuit Current	(Isc):	13.79(±3%)A
Maximum System Voltage	:	1500V
Maximum Series Fuse Rating	:	25A
Fire Rating	:	Type 1

All electrical data at Standart Test Conditions (STC): Irradiance of 1000W/m²,spectrum AM1.5 and temperature of 25°C.

WARNING - ELECTRIC HAZARD



This solar module produces electrical voltage when exposed to sunlight or intense artificial lights. Proper precautions associated with electrical power systems must be taken while handling and installing this product.

PLEASE READ THE INSTRUCTION MANUAL FOR MORE INFORMATION PRIOR TO INSTALLATION.

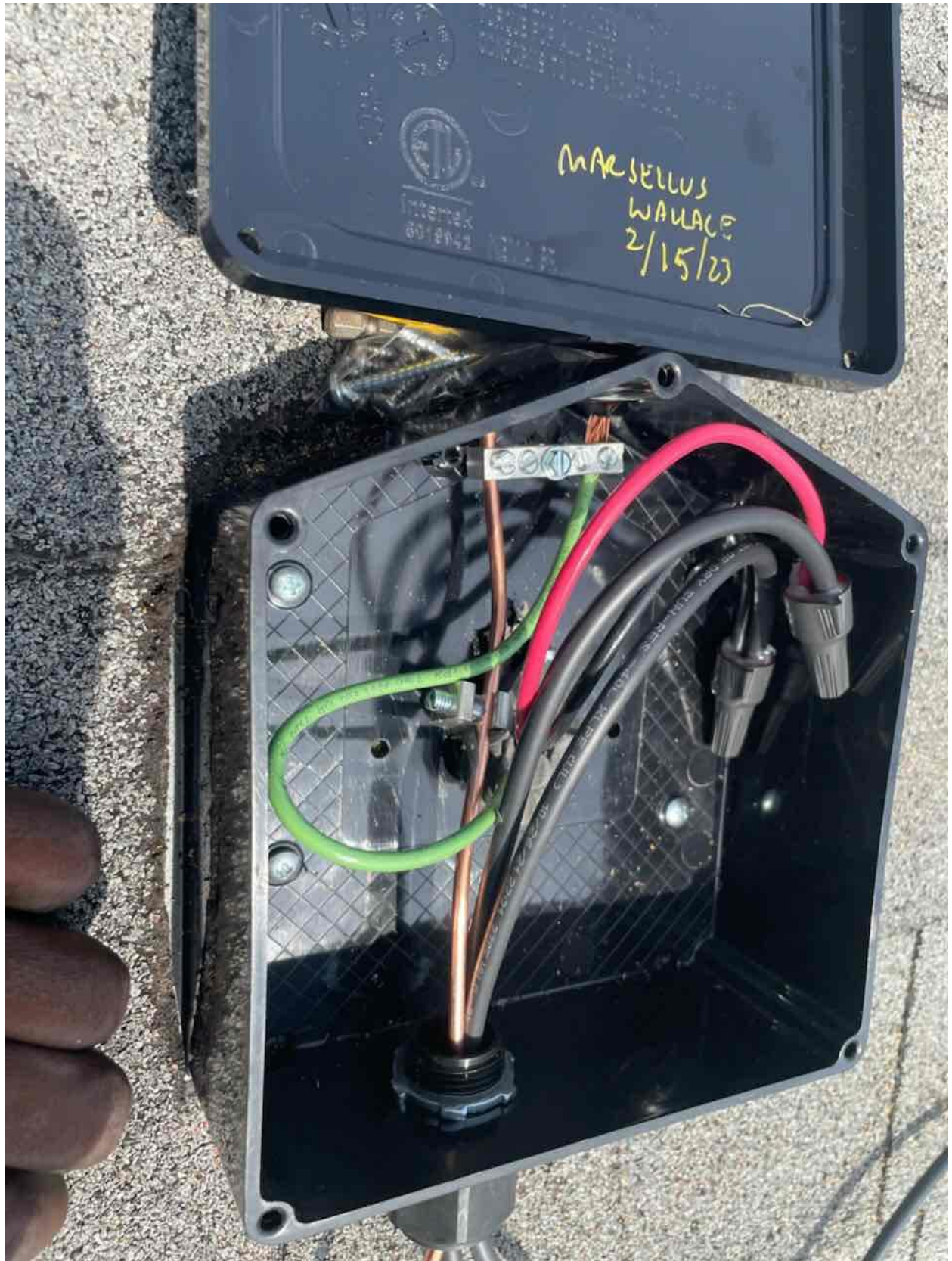


Conforms to UL STD
US UL61730-1/-2
UL61215-1/-1, 1/-2
Certified to CSA STD
C22.2 #61730-1/-2

Intertek
5019087

Made in Indonesia



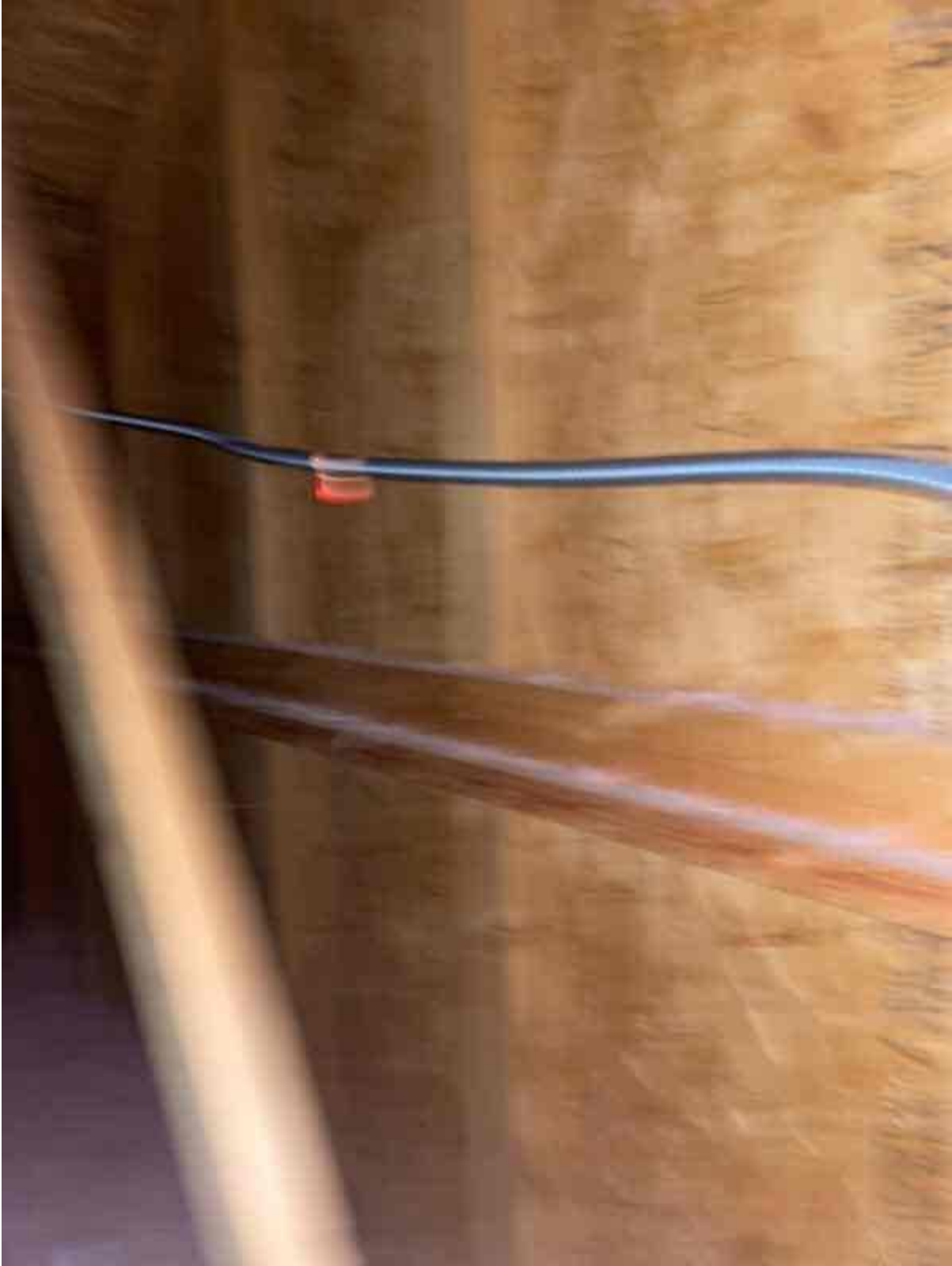


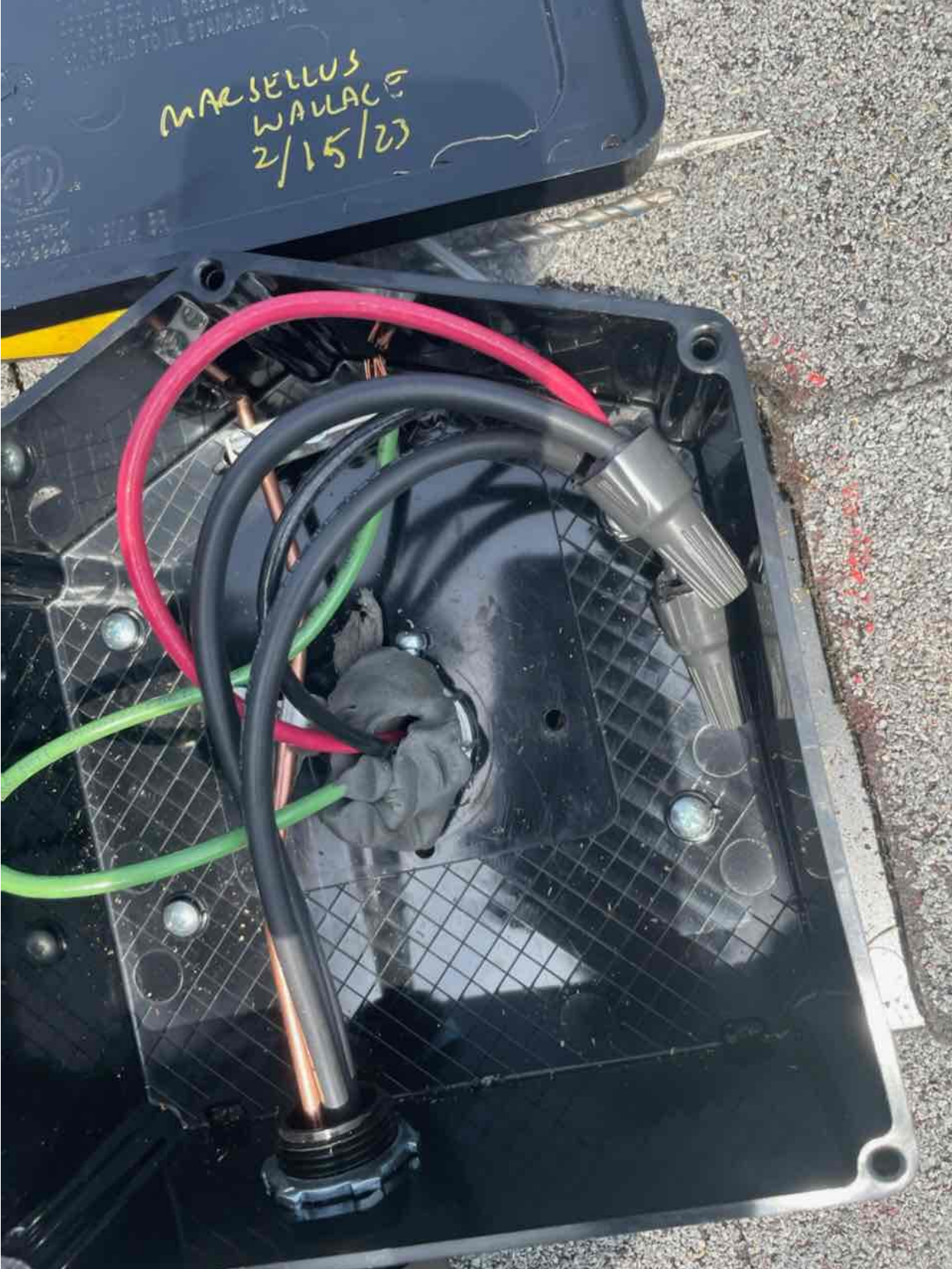












solar_{edge} SE3800H - US
Grid Support Utility Interactive
Non-Isolated Photovoltaic Inverter

Operating Voltage Range	270 - 480Vdc
Max Input Current	10.5Ade
Max Continuous Output Power	3800Wac @ 240V 3300Wac @ 208V
Voltage Min - Nom - Max	183 - 208 - 229Vac 211 - 240 - 264Vac
Max Continuous Output Current	16Aac
Max Output Fault Current	78Aac
Max Utility Backfeed Current	0Aac
Frequency Min - Nom - Max	59.3 - 60.0 - 60.5Hz
Output Power Factor	+/- 0.85 - 1
Max Ambient Temperature	60 C
Enclosure	IP65 / Type 3R
With integrated ground fault protection per NEC 690.35 (C)	Type 1 Photovoltaic Arc-Fault Circuit - Protection
COMPLIES WITH SUPPLEMENTAL INTERCONNECTION REQUIREMENTS	
Wi-Fi Password: Re4g7HZf	
Activation: 983w jeUE LrFF mave /UPq Je+2 DHY =	

WIFI MAC:
84:D6:C5:44:CB:C1

ZigBee MAC:




Intertek
4004590

PN: SE3800H - US000BE14
SN: SV3822 - 0740D85F7 - FD



solar_{edge} 

**PHOTOVOLTAIC RAPID
SHUTDOWN SYSTEM**

ICCID: 8901882004779282033F



Data plan will start on the earlier of:
- Kit installation date (first transmission)
- Date: 10-Apr-24

Made in China

solaredge

Cellular Plug-In 5y plan, SetApp, Resl, SP4, US

PN: CELL-B-R05-US-S-S2



SN: SJ4522-1982099C2-13



QTY: 1



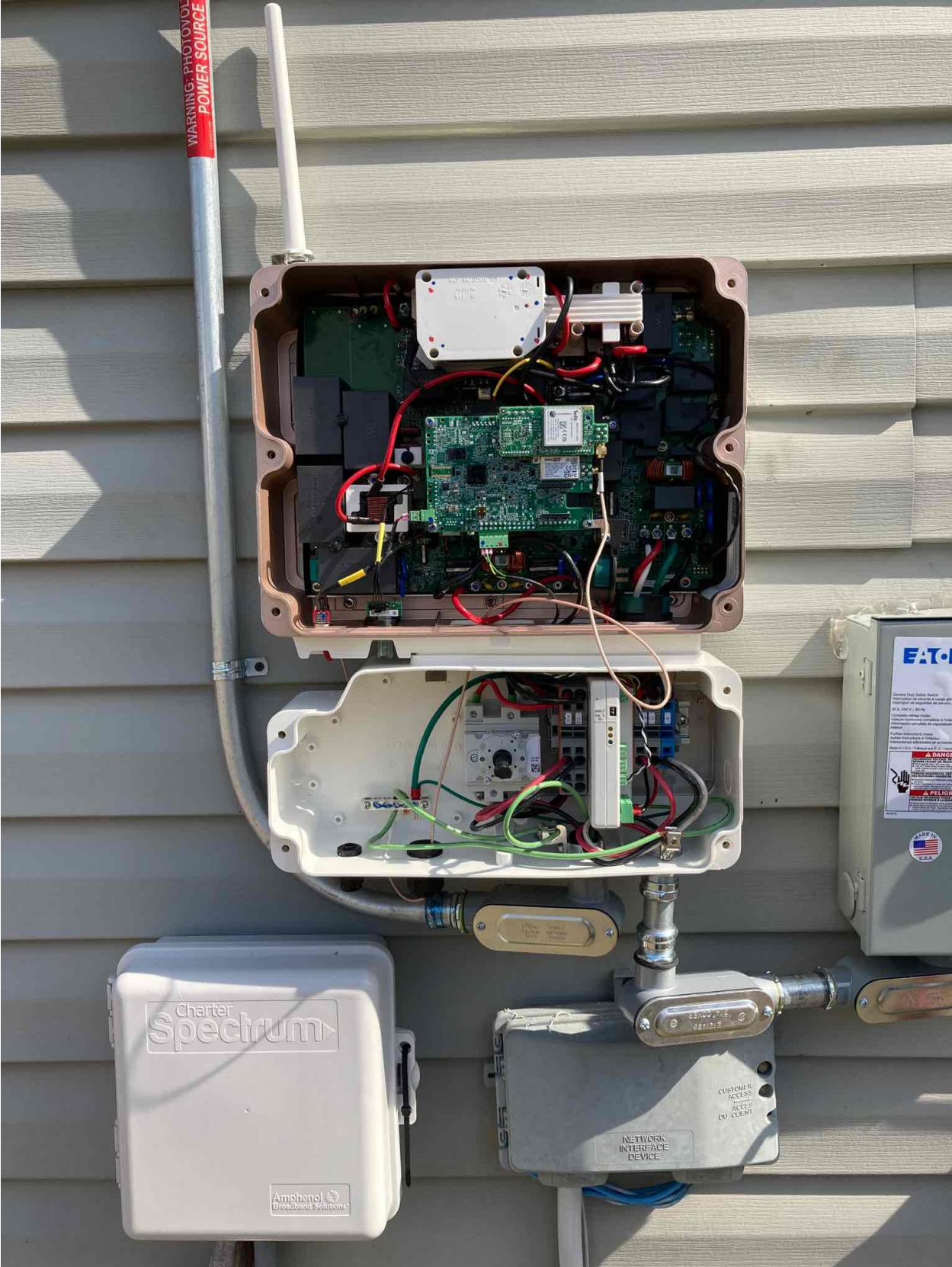
Made in China

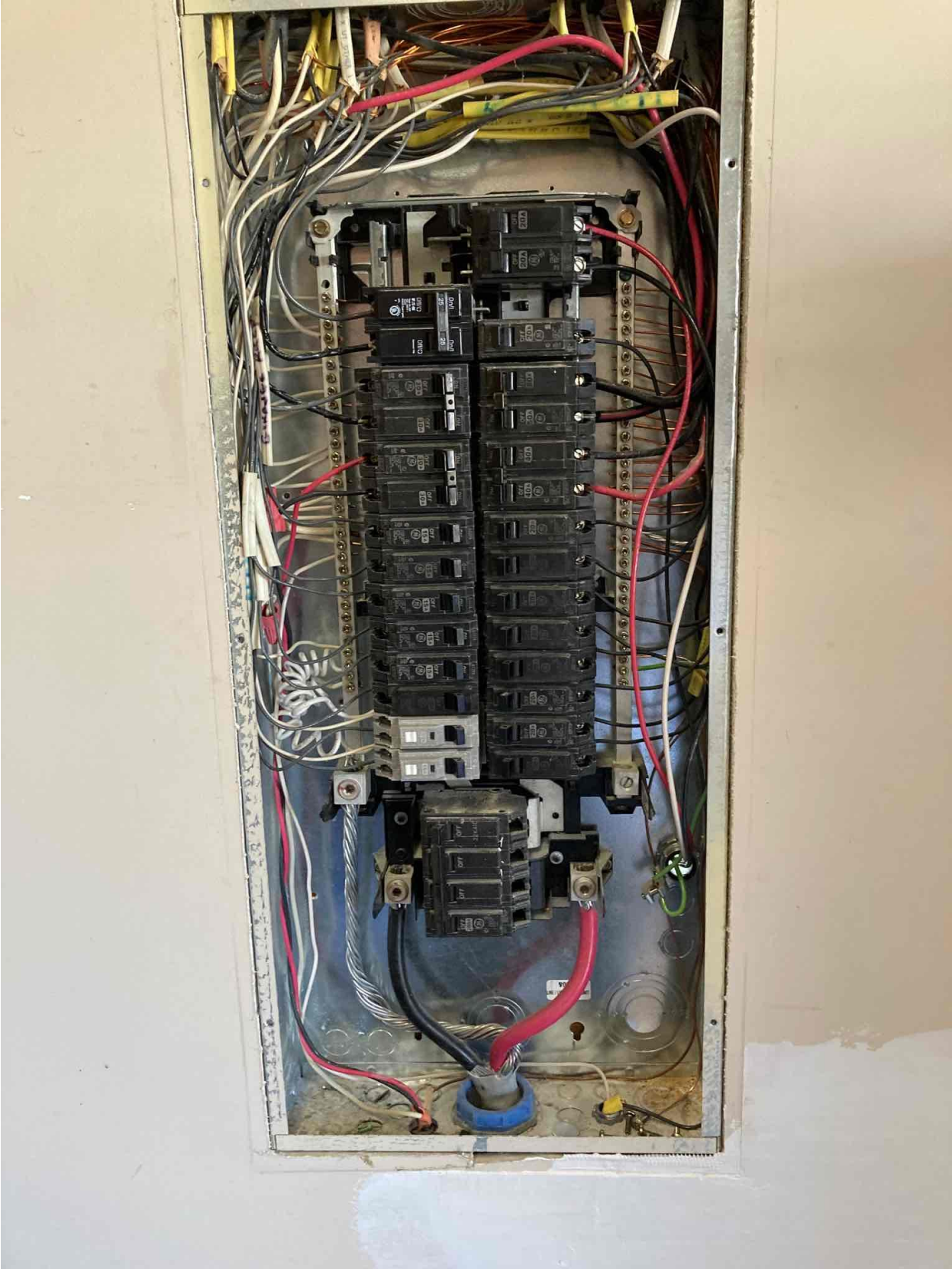


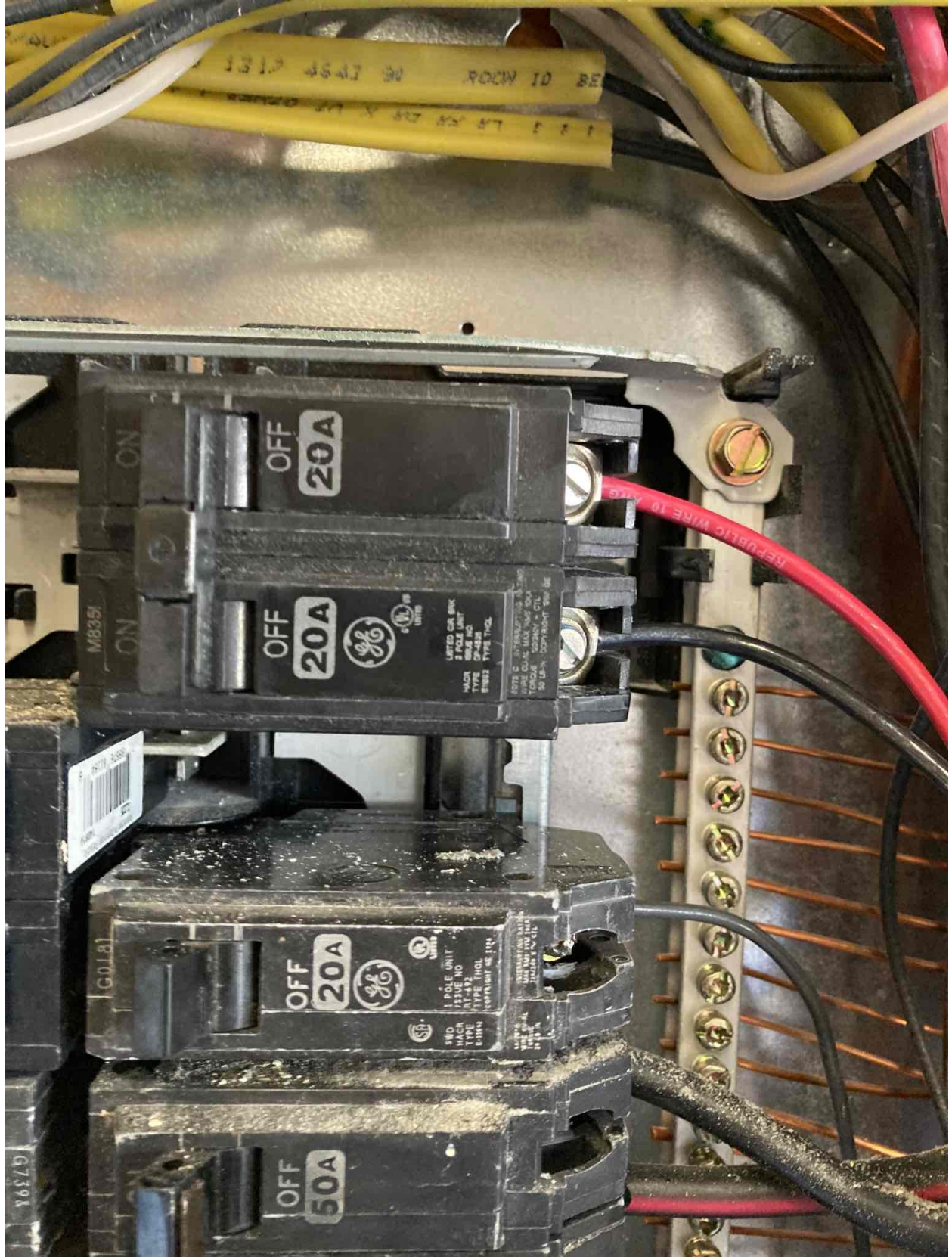
ivating the Cellular

ug-in Installation Guide, use t
tes/default/files/se-ce
on-guide.pdf

the following link:
r/files/se_ce







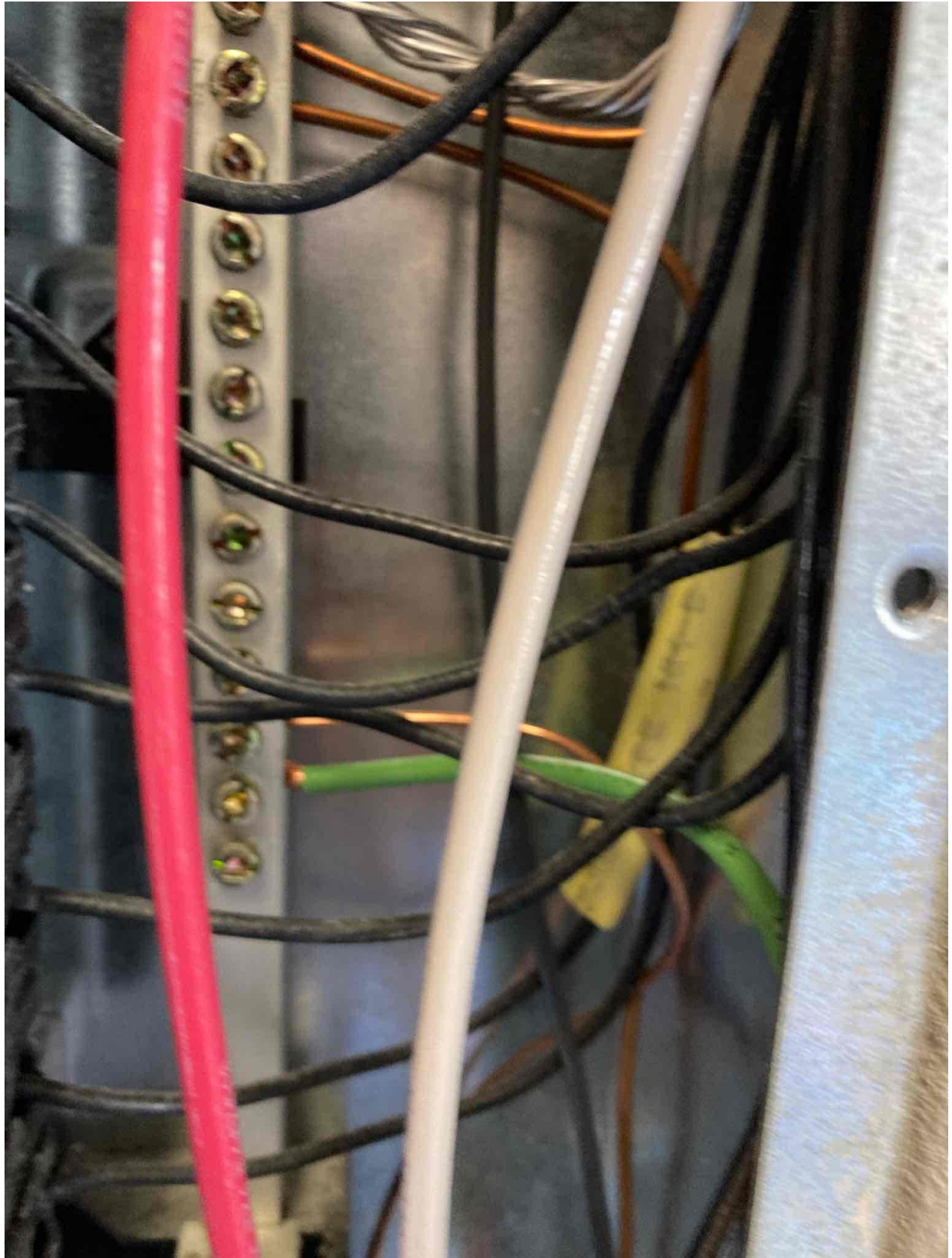
1310 4643 90 ROOM 10 BE
1 1 1 LB FOR DRY X LIT
1310 4643 90 ROOM 10 BE

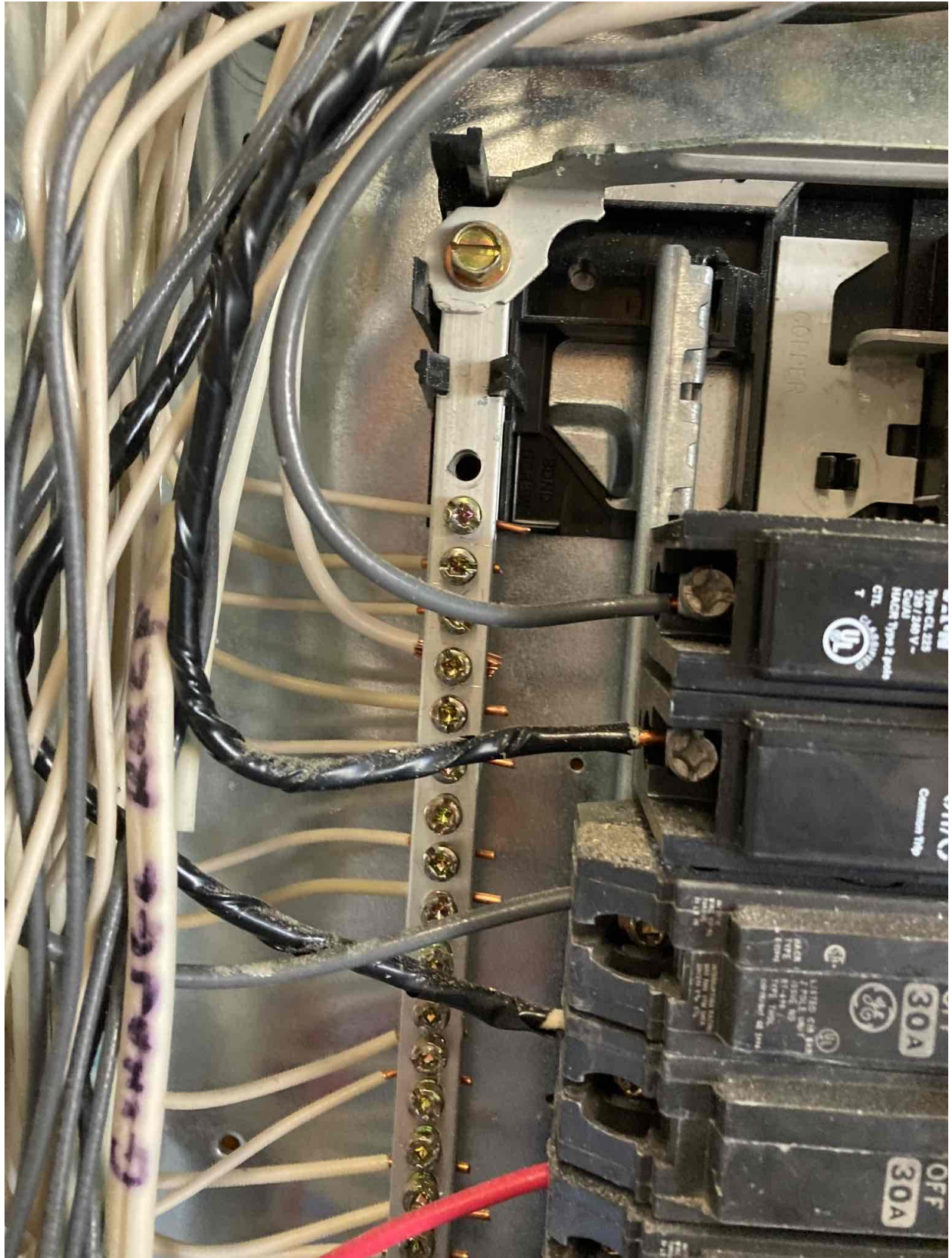
M8351
ON
OFF 20A
OFF 20A
GE
LIMITED WARRANTY
3 POLE UNIT
MAGN
TYPE 1752 1752
1310 4643 90 ROOM 10 BE

G0181
OFF 20A
GE
1 POLE UNIT
MAGN
TYPE 1752 1752
1310 4643 90 ROOM 10 BE

Y687D
OFF 50A

REPUBLIC WIRE TO A/C
1310 4643 90 ROOM 10 BE












	21-30	31-40	41-50	5
1	0173BE639-71 	0173BE932-6D 		
2	0173BA1DE-D1 	0173BD456-82 		
3				
4	0173B83CB-A0 	0173BDC22-50 		
5				
6	0173BD816-40 	0173BB20C-10 		
7	0173BE46C-A2 	0173B81EB-BE 		
8				
9	0173BE54C-83 	0173BAD70-6F 		
10				

