









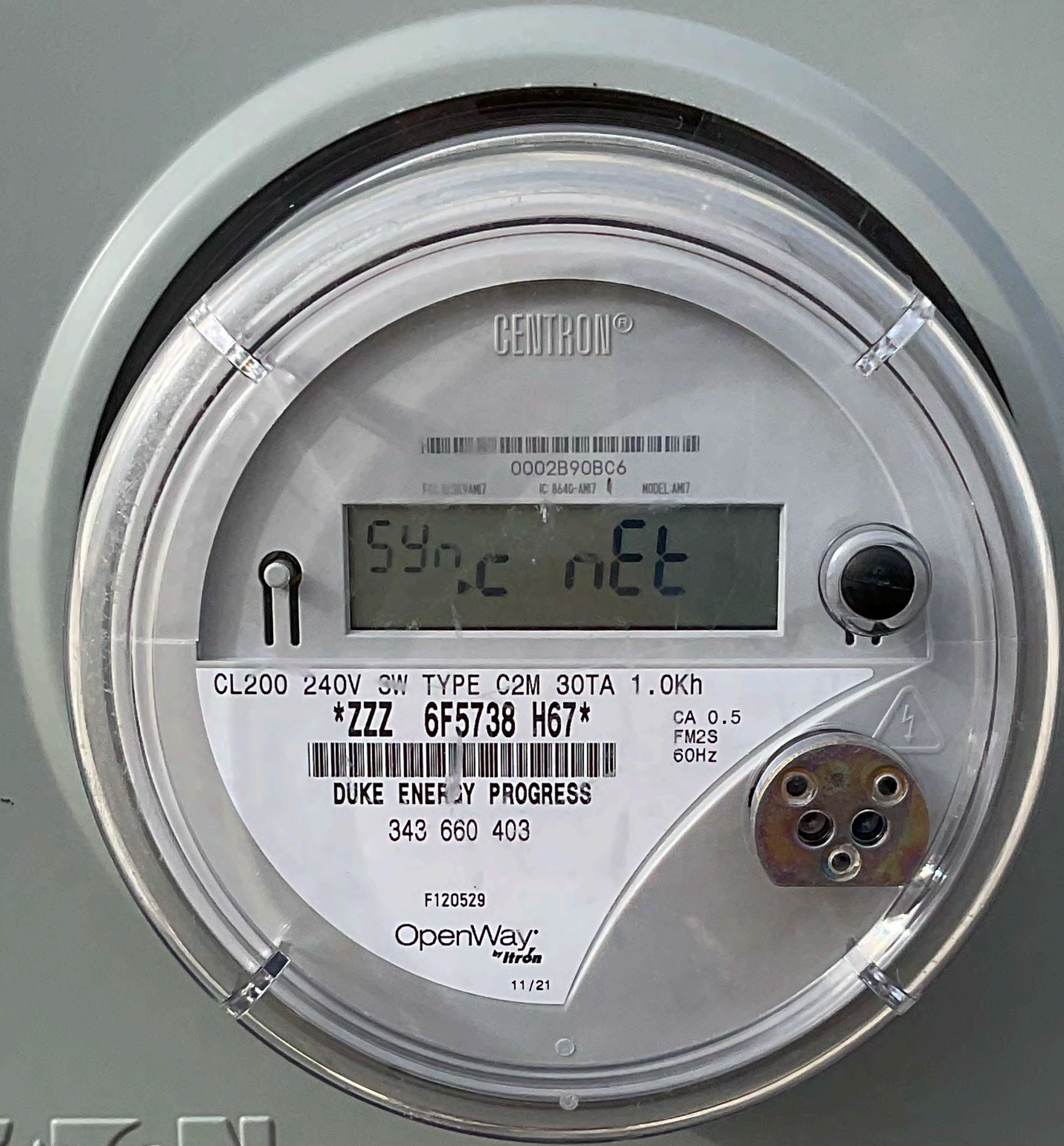
1
1
6

WARNING
CPI
SECURITY









CL200 240V 3W TYPE C2M 30TA 1.0Kh

ZZZ 6F5738 H67

CA 0.5
FM2S
60Hz



DUKE ENERGY PROGRESS

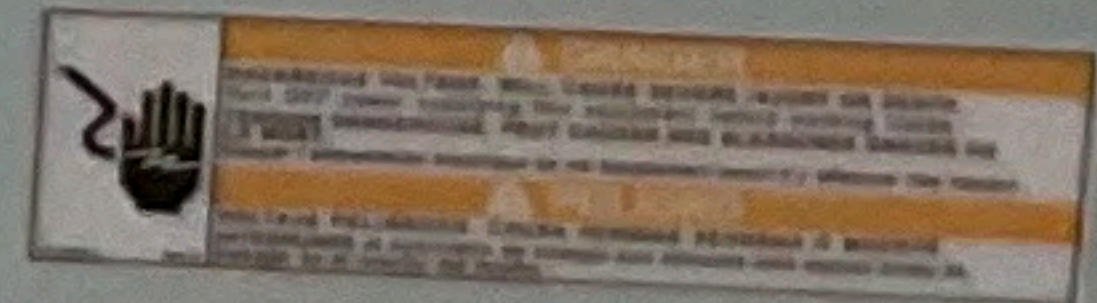
343 660 403

F120529

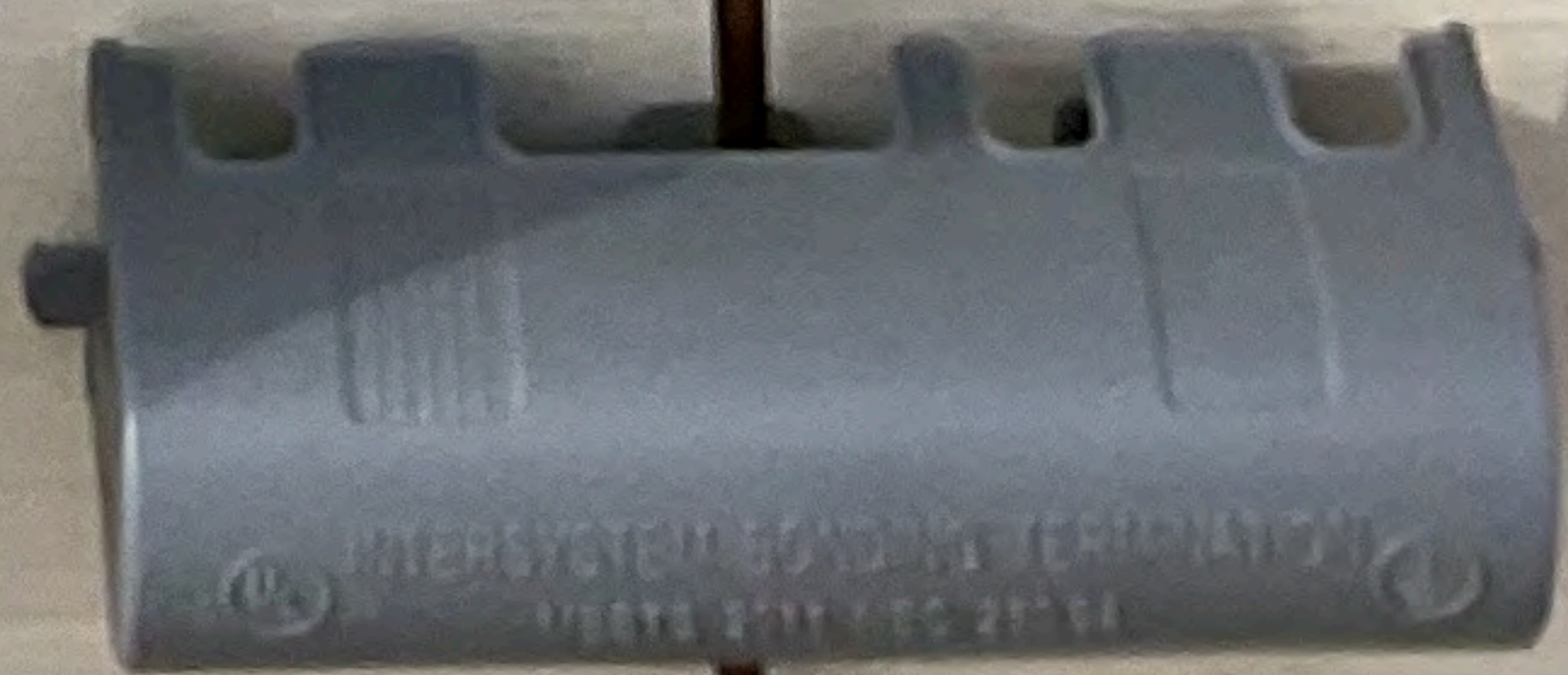
OpenWay

by Eaton
11/21

EATON



ol Solutions

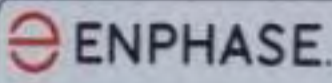




EZ
SOLAR

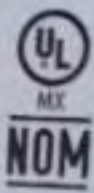
JB-1.2





IQ Combiner 4

Photovoltaic
Combiner Box
X-IQ-AM1-240-4



Electrical ratings

Voltage: 240VAC, 60Hz
 DG Breakers: 80A MAX (combined)
 DG inputs: 64A MAX (combined)
 Output: 65A MAX, 90A MAX feeder OCPD
 Temperature: 46°C MAX ambient
 For DG breaker, use only Eaton BR series.

202302115618

S/N: 202302115618

P/N: 883-00356-25

Dedicated solar and DG Combiner Box - do not add loads
 10 AMP or 15 AMP IQ Gateway Breaker not used for backfeed

Connection		Wire size	Torque
DG Breaker (1, 2, 3, 4)		14-10 AWG	2.2 Nm (20 lb-in)
		8 AWG	2.8 Nm (25 lb-in)
		6-4 AWG	3.0 Nm (27 lb-in)
65A Circuit Breaker only		4-1/0 AWG	5.0 Nm (45 lb-in)
IQ Gateway Breaker		14-10 AWG	2.20 Nm (20 lb-in)
Neutral and ground	Large screw	2-1/0 AWG	3.6 Nm (32 lb-in)
	Small screw	14-3 AWG	5.1 Nm (45 lb-in)
Main lug		6 AWG	3.6 Nm (32 lb-in)
		8 AWG	2.6 Nm (23 lb-in)
		10-14 AWG	2.3 Nm (20 lb-in)
		10-4 AWG 3-2/0 AWG	5.0 Nm (45 lb-in) 5.0 Nm (50 lb-in)

Copper conductor only, rated min 75°C
 Follow NFPA 70 (NEC), or CSA C22.1 part 1, and all local codes
 For DG Breakers larger than 20A, use wire insulated for 90°C
 based on 75°C ampacities.
 Designed in California and New Zealand
 Made in Mexico



WARNING
PHOTOVOLTAIC
POWER SOURCE

WARNING
THIS EQUIPMENT FED BY MULTIPLE
SOURCES. TOTAL RATING OF ALL
OVERCURRENT DEVICES, EXCLUDING
MAIN SUPPLY OVERCURRENT
DEVICE, SHALL NOT EXCEED
AMPACITY OF BUSBAR.

WARNING
POWER SOURCE
OUTPUT CONNECTION.
DO NOT RELOCATE THIS
OVERCURRENT DEVICE





R4

Larsen

Larsen

DANGER
ELECTRIC SHOCK HAZARD
DO NOT TOUCH ELECTRICAL COMPONENTS
WHEN THE SYSTEM IS ENERGIZED.
SEE THE LOCKOUT/TAGOUT PROCEDURE FOR
SAFETY PRECAUTIONS.
FOR MORE INFORMATION, SEE THE
OPERATION AND MAINTENANCE MANUAL.
© 2000 GEORGE A. KAPLAN & SONS, INC.
ALL RIGHTS RESERVED.

WARNING
HOT SURFACE
SURFACE TEMPERATURE MAY EXCEED 100°C
(212°F).
DO NOT TOUCH SURFACE WHEN SYSTEM IS
OPERATING.
FOR MORE INFORMATION, SEE THE
OPERATION AND MAINTENANCE MANUAL.
© 2000 GEORGE A. KAPLAN & SONS, INC.
ALL RIGHTS RESERVED.



APA 551

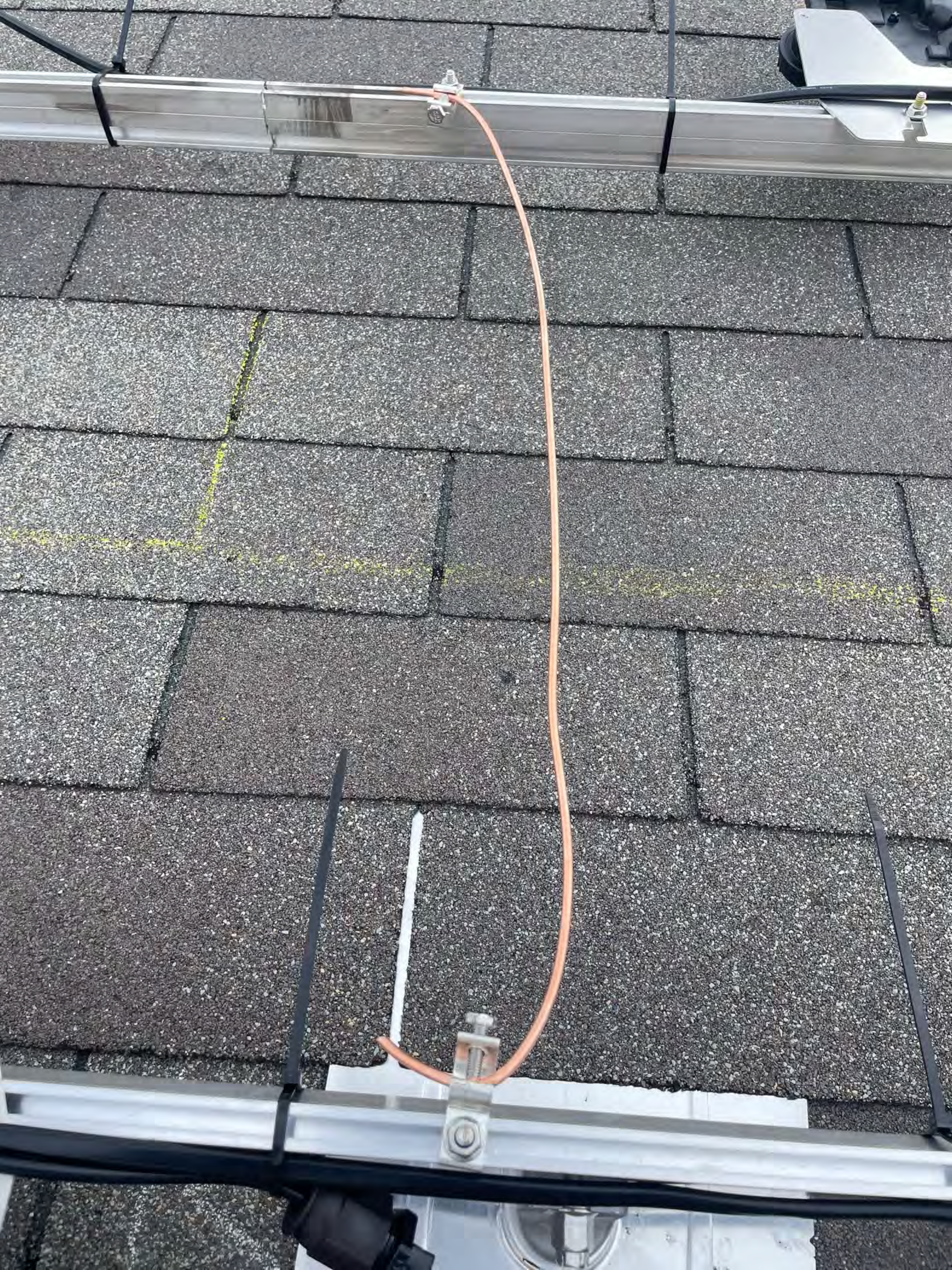
WATER RESISTANT

EXTERIOR GRADE

30 MINUTE FIRE RATED

1/2" THICK







PHOTOVOLTAIC POWER SOURCE

06/07/2008
03:54:42

PAVED SURFACES 24/20

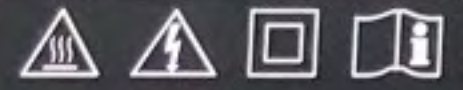


ENPHASE.

IQ8+

Grid Support Utility Interactive Inverter
Multimode Inverter
Patent Information: <https://enphase.com/patents>

Off-grid Power Factor: -1 to 0 to +1
Grid-tied Power Factor: +/- 0.85
DC input range: 16-58 V
Max. input short-circuit current: 25 A
Max. input continuous current: 12 A
AC output voltage: 240 V
AC output current: 1.21 A
AC output frequency: 60 Hz
AC output power (max. continuous): 290 VA
Operating temperature: -40 °C to +40 °C
Ingress protection: NEMA Type 6
Photovoltaic Rapid Shutdown Equipment
NEC 690.12 and C22.1-2015 Rule 64-218
UL 1741 3rd Ed., incl. SR Compliant | Assembled in Mexico



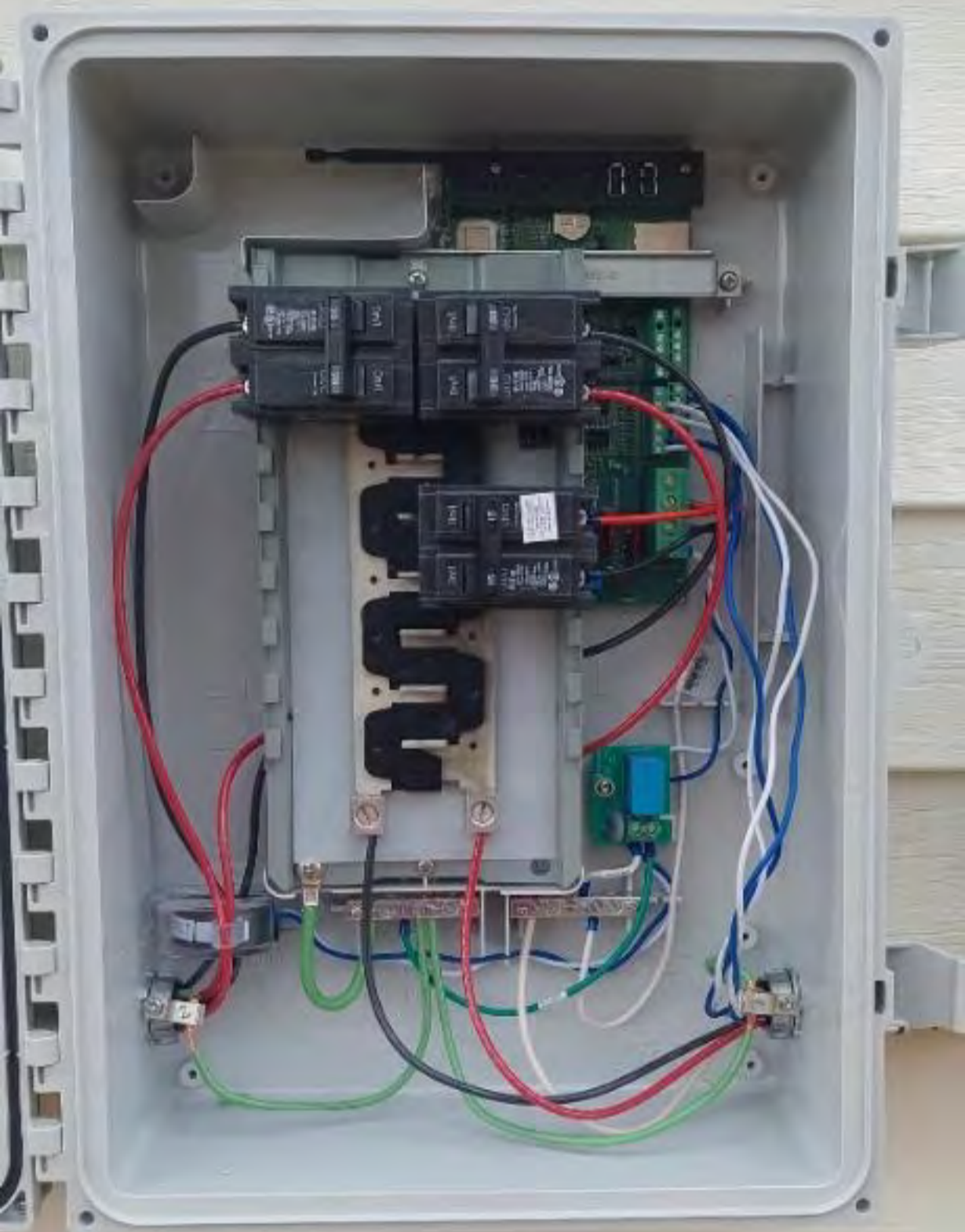
This device complies with part 15 of the FCC Rules. Operation is subject to the following two conditions: (1) This device may not cause harmful interference. (2) This device must accept any interference received, including interference that may cause undesired operation.



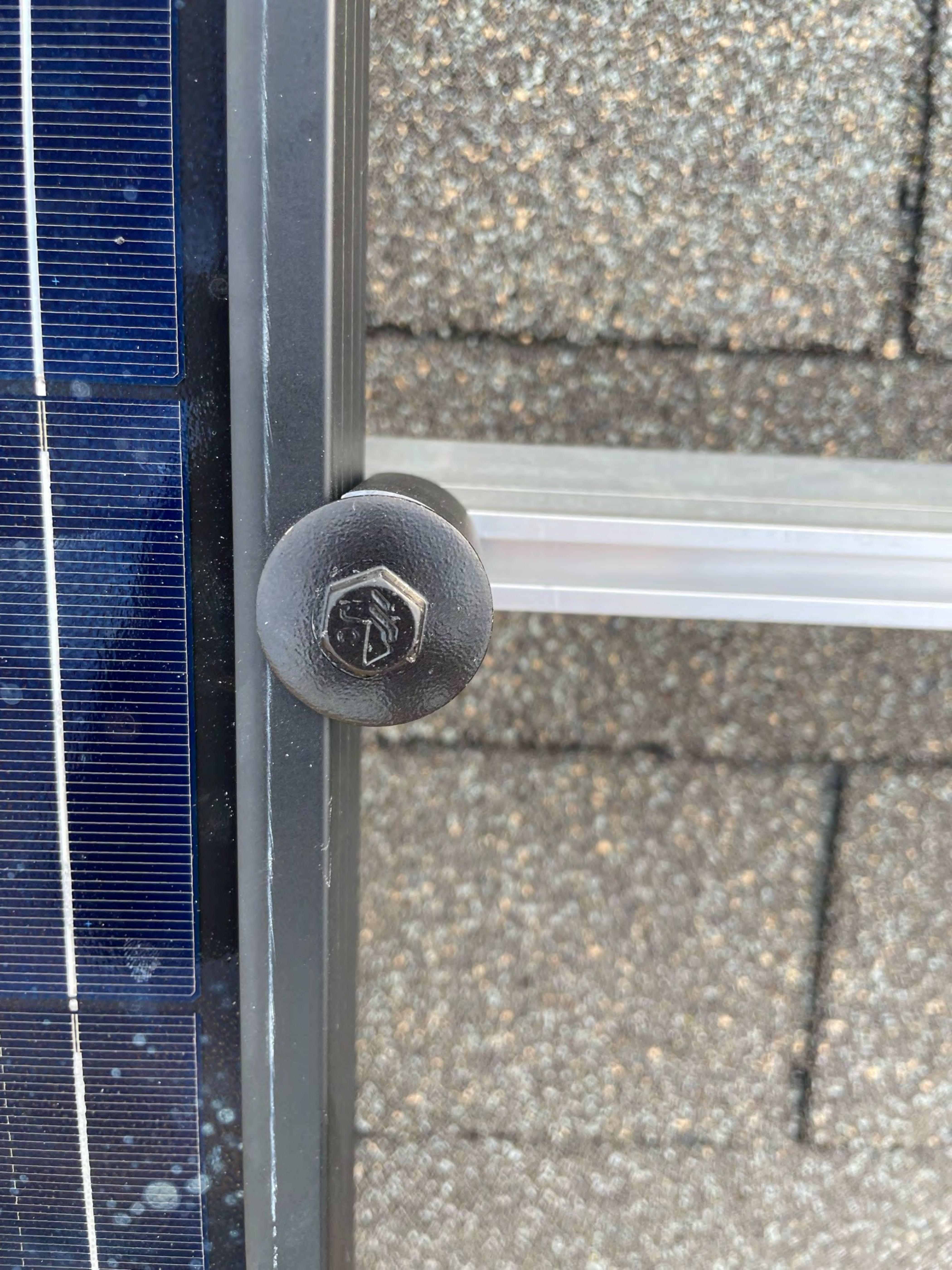
CAUTION: RISK OF SHOCK. WARRANTY VOID IF COVER REMOVED. NO USER SERVICEABLE PARTS INSIDE. REFER SERVICING TO QUALIFIED SERVICE PERSONNEL.

WARNING: ELECTRIC SHOCK HAZARD. DC CONDUCTORS OF THIS PHOTOVOLTAIC SYSTEM ARE UNGROUNDED AND MAY BE ENERGIZED. AC AND DC VOLTAGE SOURCES TERMINATE INSIDE THIS EQUIPMENT. DISCONNECT BOTH BEFORE SERVICING. PHOTOVOLTAIC ARRAY SUPPLIES A DC VOLTAGE TO THIS EQUIPMENT WHEN EXPOSED TO LIGHT. HOT SURFACES. TO REDUCE THE RISK OF BURNS - DO NOT TOUCH.

ATTENTION: RISQUE D'ELECTROCUTION. LES CONDUCTEURS CC DE CE SYSTEME PHOTOVOLTAIQUE NE SONT PAS RELIES A LA TERRE ET PEUVENT ETRE SOUS TENSION. DES SOURCES DE TENSION CA ET CC SONT CONNEXEES A CET APPAREIL. ISOLER LES DEUX SOURCES AVANT TOUTE INTERVENTION. LES CABLES COURANT CONTINU SONT SOUS TENSION LORSQUE LE CHAMP PHOTOVOLTAIQUE EST EXPOSE A LA LUMIERE. RISQUE DE BRULURE. NE PAS TOUCHER.









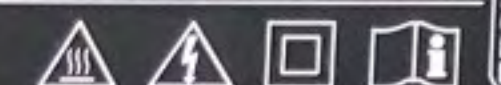
ENPHASE.

IQ8+

Grid Support Utility Interactive Inverter
Multimode Inverter

Patent Information: <https://enphase.com/patents>

Off-grid Power Factor: -1 to 0 to +1
Grid-tied Power Factor: +/- 0.85
DC input range: 16-58 V
Max. input short-circuit current: 25 A
Max. input continuous current: 12 A
AC output voltage: 240 V
AC output current: 1.21 A
AC output frequency: 60 Hz
AC output power (max. continuous): 290 VA
Operating temperature: -40 °C to +40 °C
Ingress protection: NEMA Type 6
Photovoltaic Rapid Shutdown Equipment
NEC 690.12 and C22.1-2015 Rule 64-218
UL 1741 3rd Ed., incl. SR Compliant | Assembled in Mexico



This device complies with part 15 of the FCC Rules. Operation is subject to the following two conditions: (1) This device may not cause harmful interference. (2) This device must accept any interference received, including interference that may cause undesired operation.



CAUTION: RISK OF SHOCK. WARRANTY VOID IF COVER REMOVED. NO USER SERVICEABLE PARTS INSIDE. REFER SERVICING TO QUALIFIED SERVICE PERSONNEL.

WARNING: ELECTRIC SHOCK HAZARD. DC CONDUCTORS OF THIS PHOTOVOLTAIC SYSTEM ARE UNGROUNDING AND MAY BE ENERGIZED. AC AND DC VOLTAGE SOURCES TERMINATE INSIDE THIS EQUIPMENT. DISCONNECT BOTH BEFORE SERVICING. PHOTOVOLTAIC ARRAY SUPPLIES A DC VOLTAGE TO THIS EQUIPMENT WHEN EXPOSED TO LIGHT. HOT SURFACES. TO REDUCE THE RISK OF BURNS - DO NOT TOUCH.

ATTENTION: RISQUE D'ELECTROCUTION. LES CONDUCTEURS CC DE CE SYSTEME PHOTOVOLTAIQUE NE SONT PAS RELIES A LA TERRE ET PEUVENT ETRE SOUS TENSION. DES SOURCES DE TENSION CA ET CC SONT CONNEXES A CET APPAREIL. ISOLER LES DEUX SOURCES AVANT TOUTE INTERVENTION. LES CABLES COURANT CONTINU SONT SOUS TENSION LORSQUE LE CHAMP PHOTOVOLTAIQUE EST EXPOSE A LA LUMIERE. RISQUE DE BRULURE. NE PAS TOUCHER.





This device complies with part 15 of the FCC Rules. Operation is subject to the following two conditions: (1) This device may not cause harmful interference. (2) This device must accept any interference received, including interference that may cause undesired operation.

UL
CERTIFIED
EQUIPMENT
ELECTRIC SHOCK HAZARD
SERIAL NO. 123456789

WARNING: ELECTRICAL SHOCK HAZARD. DC CONDUCTORS OF THIS PHOTOVOLTAIC SYSTEM ARE UNGROUNDING AND MAY BE ENERGIZED. AC AND DC VOLTAGE SOURCES TERMINATE INSIDE THIS EQUIPMENT. DISCONNECT BOTH BEFORE SERVICING. PHOTOVOLTAIC ARRAY SUPPLIES A DC VOLTAGE TO THIS EQUIPMENT WHEN EXPOSED TO LIGHT. HOT SURFACES. TO REDUCE THE RISK OF BURNS - DO NOT TOUCH.

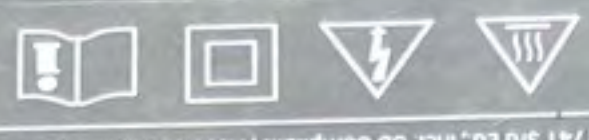
ATTENTION: RISQUE D'ELECTROCUTION. LES CONDUCTEURS CC DE CE SYSTEME PHOTOVOLTAIQUE NE SONT PAS RELIES A LA TERRE ET PEUVENT ETRE SOUS TENSION. DES SOURCES DE TENSION CA ET CC SONT CONNECTES A CET APPAREIL. ISOLEZ LES DEUX SOURCES AVANT TOUTE INTERVENTION. LES CABLES COURANT CONTINU SONT SOUS TENSION LORSQUE LE CHAMP PHOTOVOLTAIQUE EST EXPOSE A LA LUMIERE. RISQUE DE BRULURE. NE PAS TOUCHER.

Grid Support Utility Interactive Inverter
Multimode Inverter
Patent information: <https://enphase.com/patents>

Grid-tied Power Factor: -1.0 to +1
Grid-tied Power Factor: +/- 0.85

DC input range: 16-58 V
Max input continuous current: 25 A
Max input continuous current: 12 A
AC output voltage: 240 V
AC output current: 1.21 A
AC output frequency: 60 Hz
AC output power (max. continuous): 290 VA
Operating temperature: -40 C to +60 C
Ingress protection: NEMA Type 6
Photovoltaic Rapid Shutdown Equipment
NEC 690.12 and C22.1-2015 Rule 64-218
UL 1741 3rd Ed., incl. SB Compliant | Assembled in Mexico

ENPHASE
iQ8+





GUARDIAN

Consulte las instrucciones para la instalación y los métodos apropiados y los requisitos de los fabricantes.

Este dispositivo es un producto de seguridad y debe ser utilizado de acuerdo con las instrucciones de uso y los requisitos de los fabricantes.





IRONRIDGE
112-21-40 Rev. 2
11/2008

DEWALT

+DC-







Building Your Trust in Solar

Jinko Solar Co., Ltd.

NO.1 Jinko Road Shangrao Economic Development Zone

Jiangxi Province 334100 China

www.jinkosolar.com

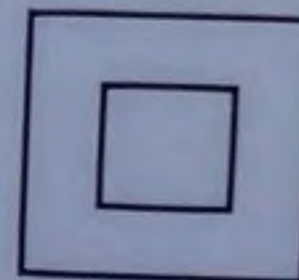


PHOTOVOLTAIC MODULE

Modules assembled in the USA from solar cells made in Vietnam

Solar Module Type : JKM390M-72HBL-V

Maximum Power (Pmax)	390W
Power Tolerance	±3%
Maximum Power Voltage (Vmp)	39.64V
Maximum Power Current(Imp)	9.84A
Open Circuit Voltage(Voc)	48.60V±3%
Short Circuit Current(Isc)	10.46A±4%
Maximum System Voltage	1500VDC
Maximum Series overcurrent protective device rating	20A
Operating Temperature	-40°C~+85°C
Protection Class	II
Module Fire Performance	Type 1(UL1703)/Class C(IEC61730)
Weight	22.5(kg)
Dimension	2008×1002×40(mm)
STC:	1000W/m ² , AM1.5, 25°C
Current Sorting	12

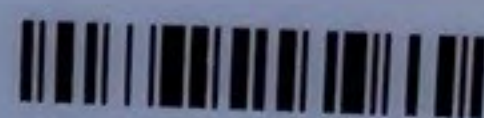


System fire Class Rating: See installation Instructions for Installation Requirements to Achieve a Specified System Fire Class Rating with this Product
The fire rating is Class C in Canada



WARNING

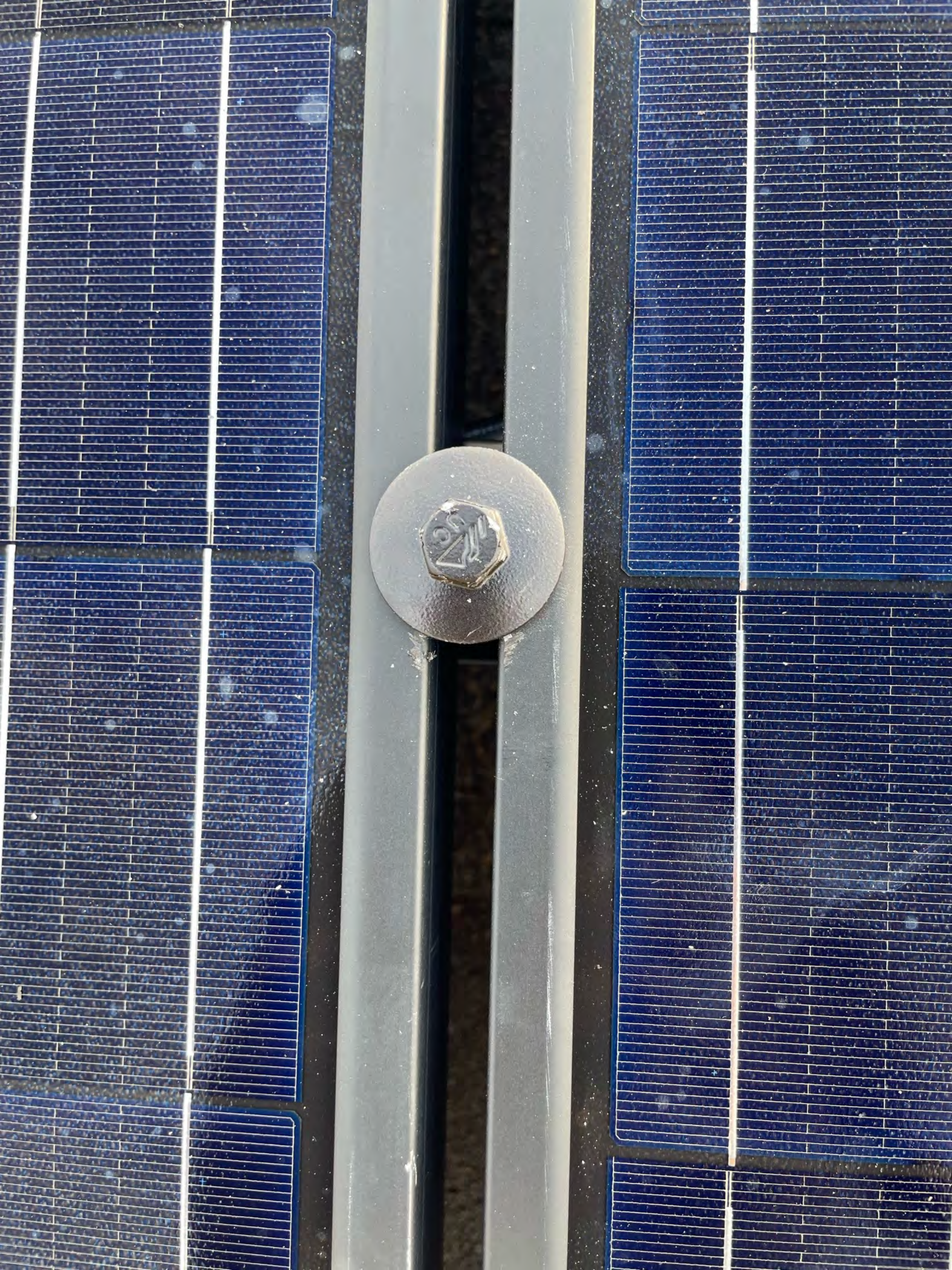
ONLY qualified personnel should install or perform maintenance work on these modules
BE AWARE of dangerous high DC voltage when connecting modules
DO NOT damage or scratch the rear surface of the module
SEE module literature for appropriate mating connectors



AVERTISSEMENT

SEUL les professionnels peuvent installer et maintenir les éléments
PRENDRE GARDE de la haute tension continue lorsque les éléments sont connectés
IL EST interdit d'endommager ou d'égraffer l'envers des éléments
VOIR les infos modules pour les connecteurs de raccordement appropriés

For field connections, use 12 AWG wire insulated for a minimum of 90°C, rated for wet conditions and resistant to ultra violet radiation (where exposed)



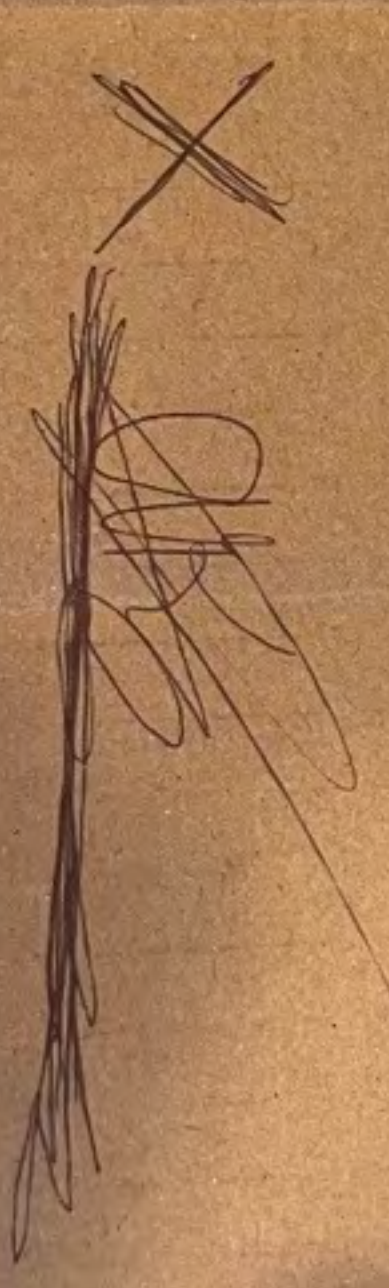




70-8
821 70800
MADE IN U.S.A.



Aquil Kris 116 w: ~~Clay~~ Top
No. 2754C
Creek Dr Williamson
2/16/23

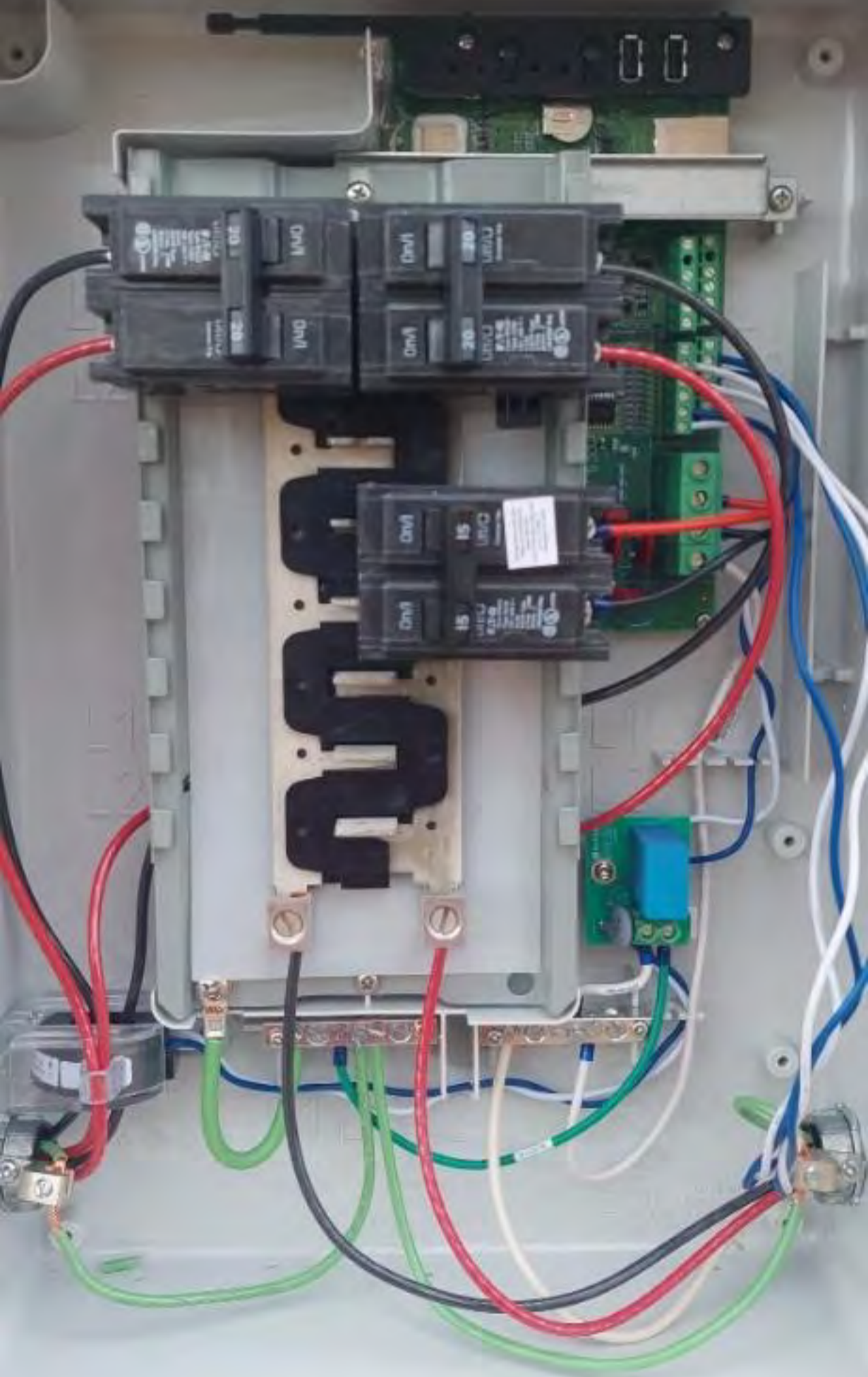


3 ft

18 in

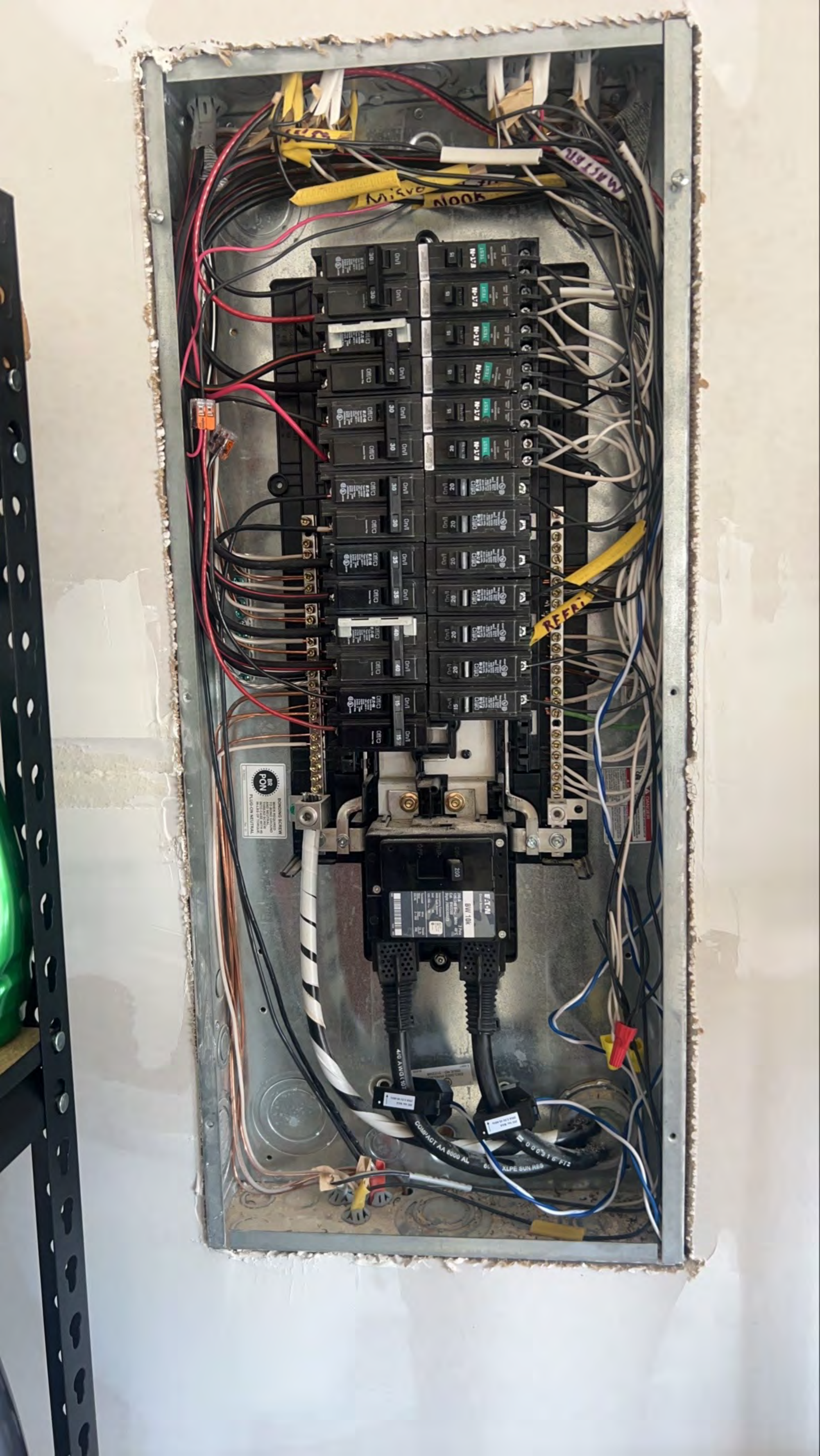






PHOTOVOLTAIC POWER SOURCE





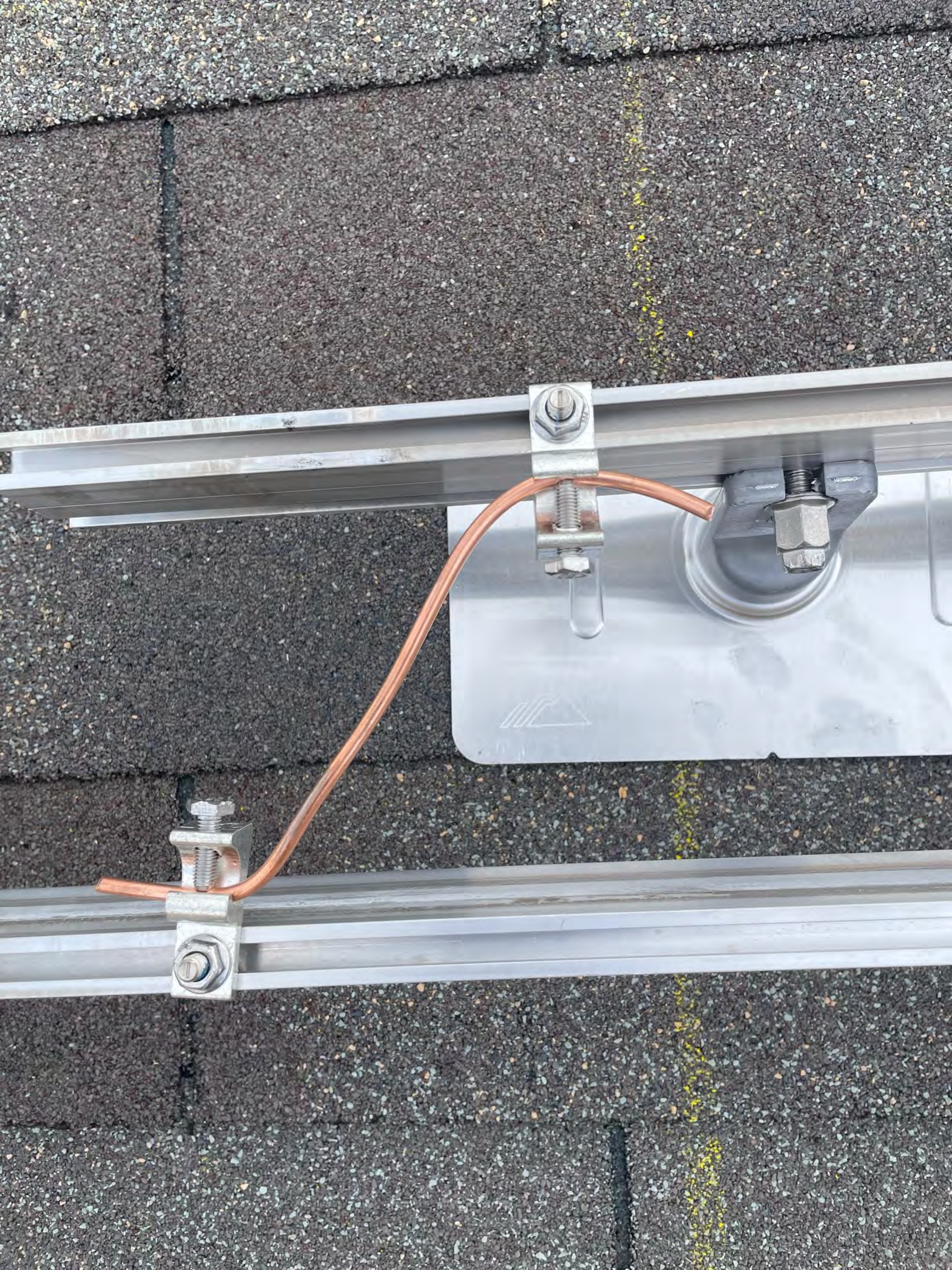




EATON
TEST
BR
COMBINATION
AFCI
LOAD
NEUTRAL
LOAD
POWER

OFF/O
EATON
Type BR120
Type C120
120/240 V -
Circuit Breaker
NACR Type
1 Pole, 2-Pole
EVTIS - 1
Listed
UL

REPAIR





WARNING
SOLAR ELECTRIC
CIRCUIT BREAKER
IS BACKFED

PHOTOVOLTAIC
SOLAR BREAKER

PHOTOVOLTAIC
SOLAR BREAKER

A		30	On/I	51	Kit. Nook. 2 Dinn. Lights. Recep.
B		30	On/I	51	Bedroom (3) 4 Attic. Hall Lights. Recep.
A	Wall Oven	40	On/I	51	Bedroom 6 Att. Lights Recep.
B	5				
A	Wall Oven	40	On/I	51	Master bed 8 Bath Lights. Recep.
B	7				
A	Dryer	30	On/I	51	Down. Bath 10 Garage Foyer. Lights Recep.
B	9				
A	Dryer	30	On/I	02	Nook. 12 Dinn Recep. Kit
B	11				
A	Water Heater	30	On/I	02	Micro- wave
B	13				
A	Water Heater	30	On/I	02	Washer
B	15				16 GFI
A	A/C	35	On/I	02	Bathroom
B	17				18 GFI
A	A/C	35	On/I	02	Freezer
B	19				20
A	CookTop	40	On/I	02	Fridge
B	21				22
A	CookTop	40	On/I	02	Garage Door open/close
B	23				24
A	DishWasher	15	On/I	51	Furnace
B	25				26
A		15	On/I		
B	27				28
A		15	On/I		
B	29				30

EATON
Circuit Breaker
200
BW 10K
200A
277V AC
1P
CIRCUIT BREAKER
TYPE THQB3
SINCE 1987

DANGER
PELIGRO

APPENDIX E-1 ENERGY
SECTION 1101.14
NEC 2017

116 Wind
DRB

1	2	3	4	5	6	7	8	9	10	11	12	13	14	15	16	17	18	19	20	21	22	23	24	25	26	27	28	29	30

THIS HOME IS SOLD
AS IS

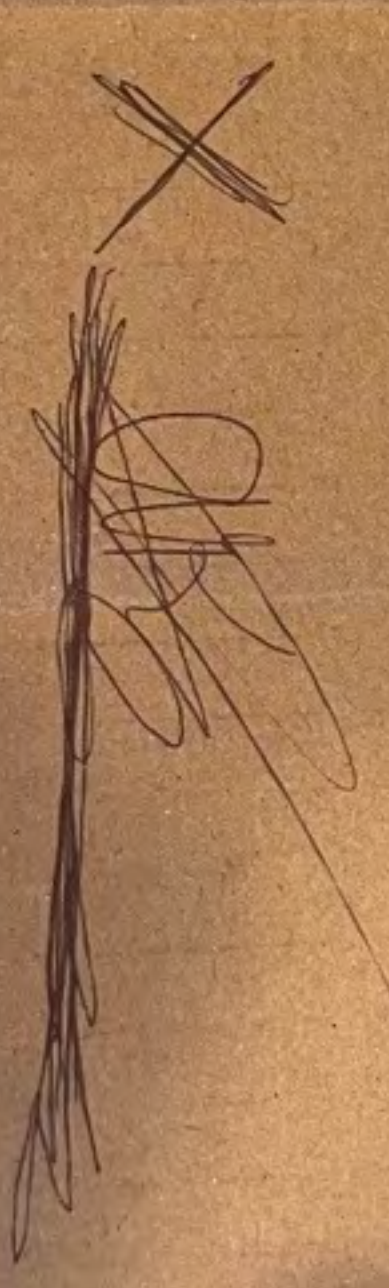
Aquil Kris 116 w/Clay
no. 2754C
CORK DR Williamson
2/16/23



3 ft



18 in





⚠ WARNING
PHOTOVOLTAIC
POWER SOURCE

⚠ WARNING

THIS EQUIPMENT FED BY MULTIPLE
SOURCES. TOTAL RATING OF ALL
OVERCURRENT DEVICES, EXCLUDING
MAIN SUPPLY OVERCURRENT
DEVICE, SHALL NOT EXCEED
AMPACITY OF BUSBAR.

⚠ WARNING

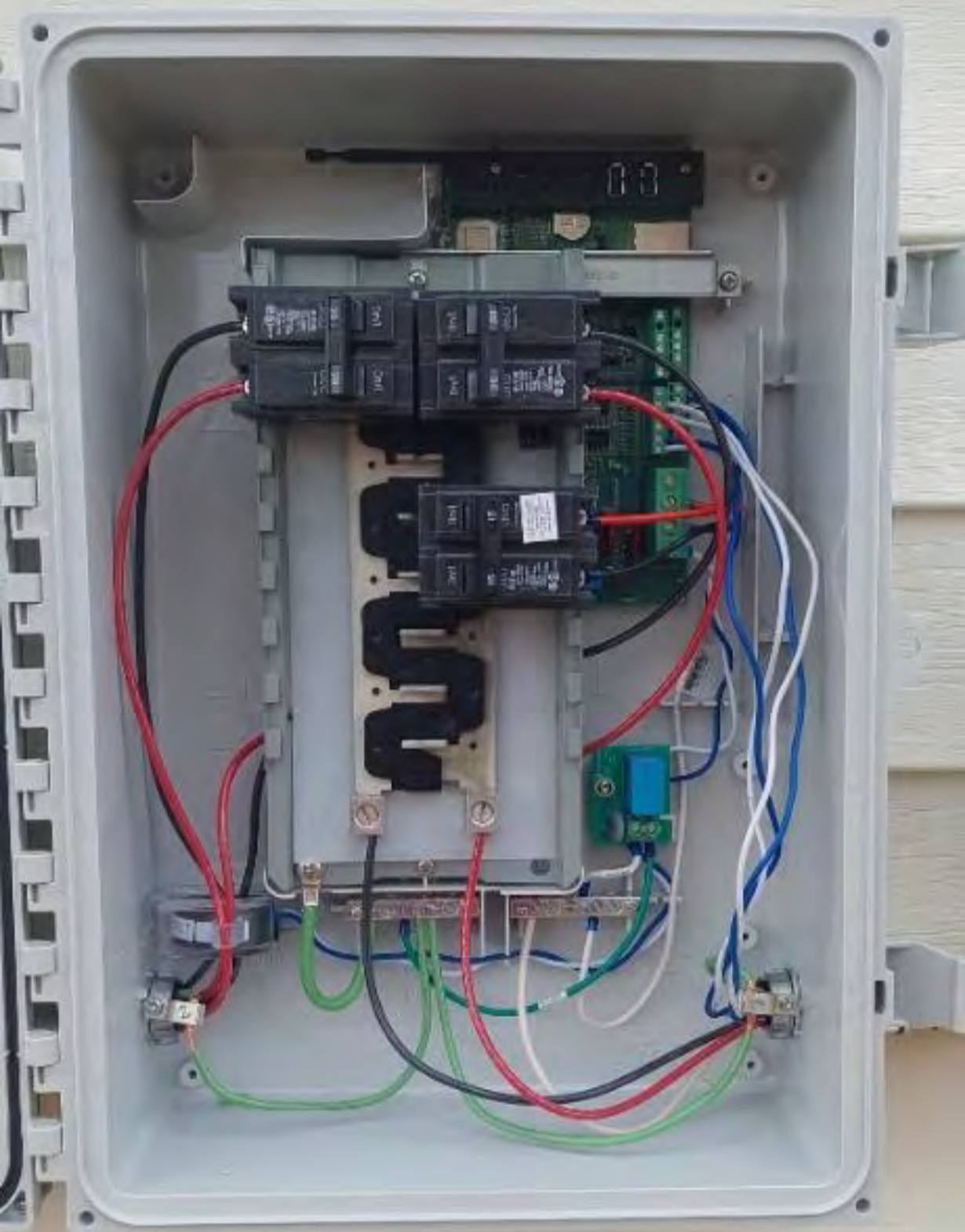
POWER SOURCE
OUTPUT CONNECTION
DO NOT RELOCATE THIS
OVERCURRENT DEVICE

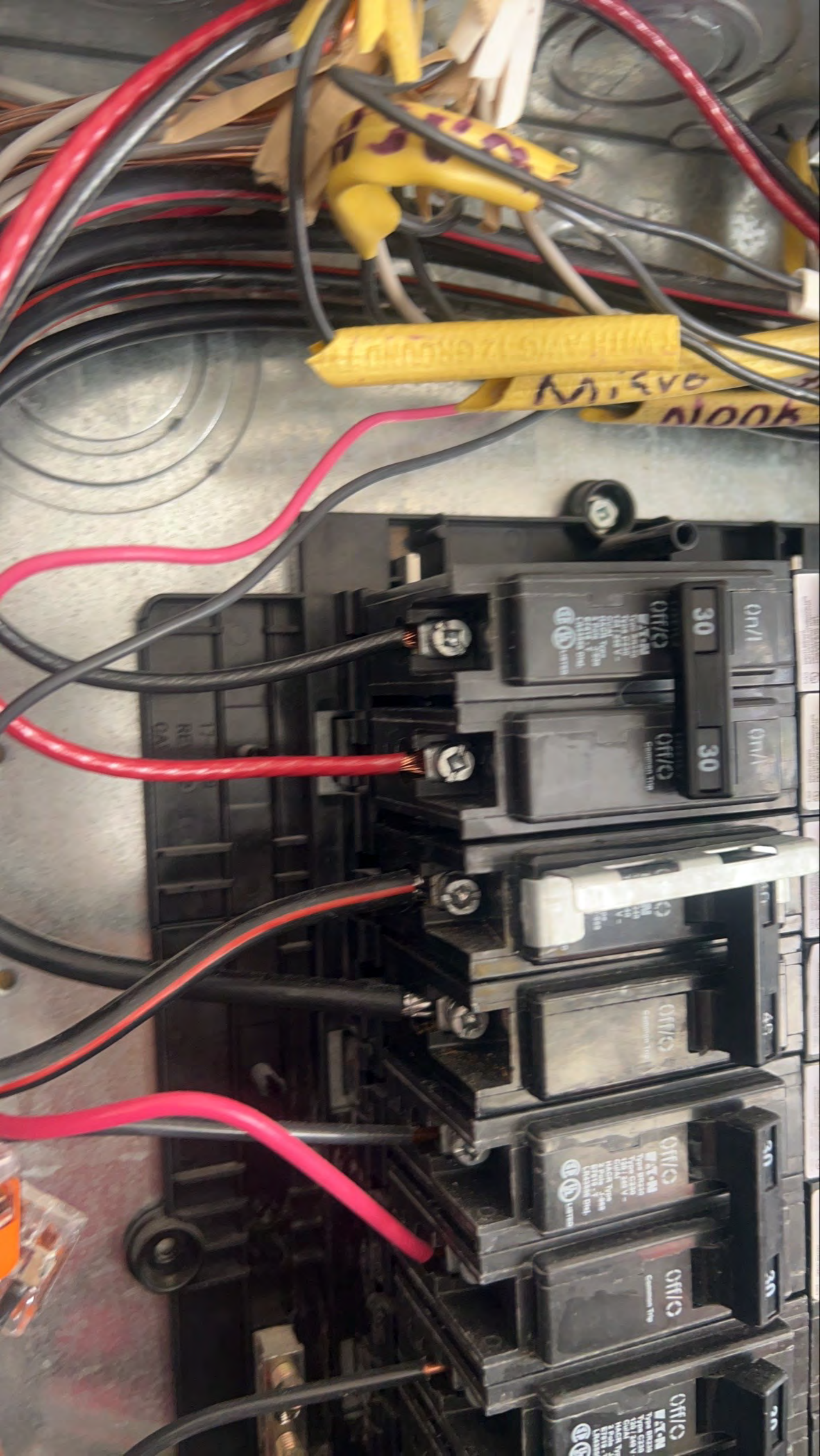




EZ
SOLAR

JB-1.2











UL LISTED 5FKB

PHOTOVOLTAIC POWER SOURCE

RESOMARK
RATED SH

OS
/11







116

CPI

847-1213

FAMILY OF AMERICANS

CAROL TRASH & 919-98