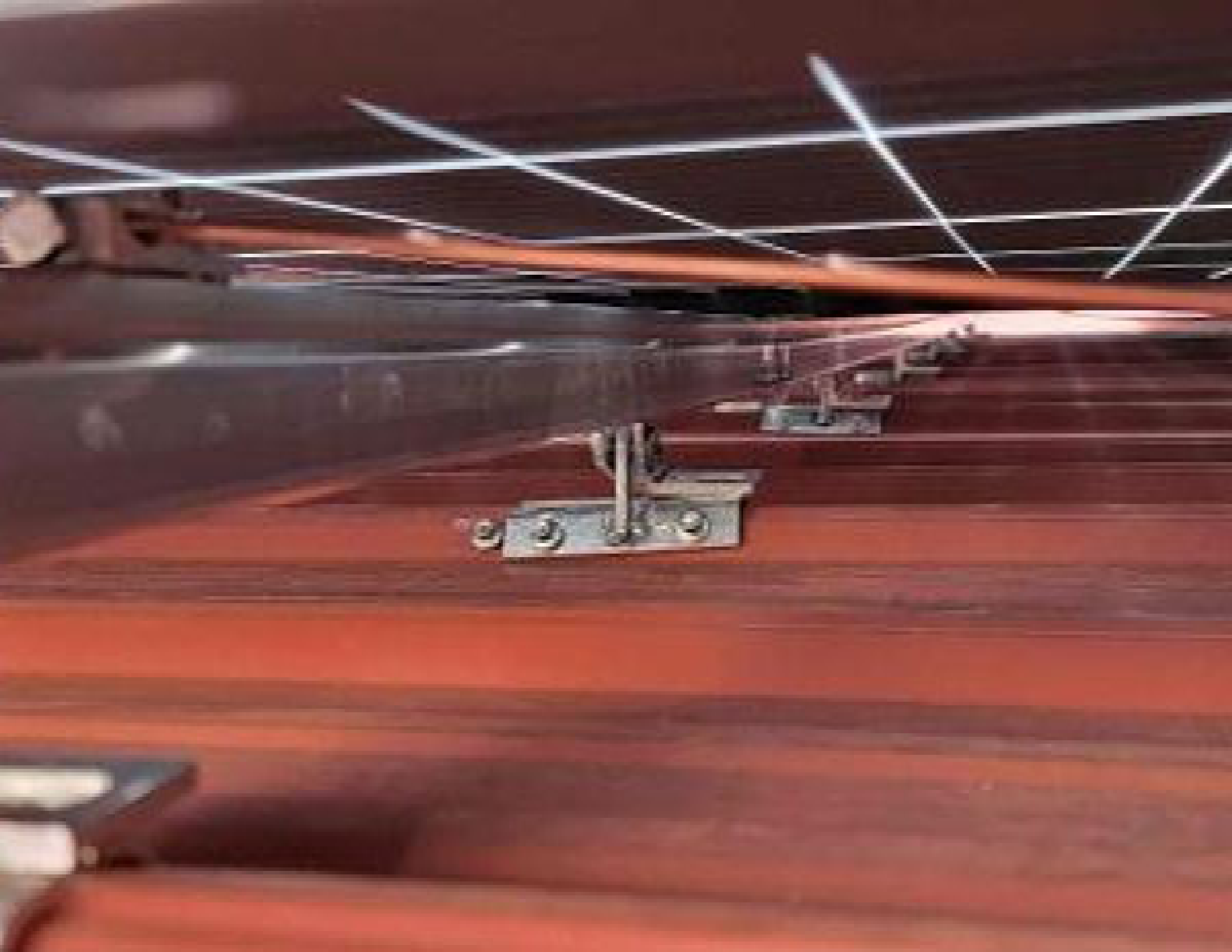




UNIVERSITY OF ALABAMA
AT BIRMINGHAM



Max	5-200	50
Max	6-200	200
Max	1-400	200

4023T105A-01



WATER TREATMENT		THIS FACTOR	THIS FACTOR
		APPLY CUAL	APPLY CUAL
Dissolved	1-4	20	20
	5-8	25	25
	9-12	30	30
Suspended	1-4	20	20
	5-8	25	25
	9-12	30	30
Total	1-4	20	20
	5-8	25	25
	9-12	30	30

40311-004-01

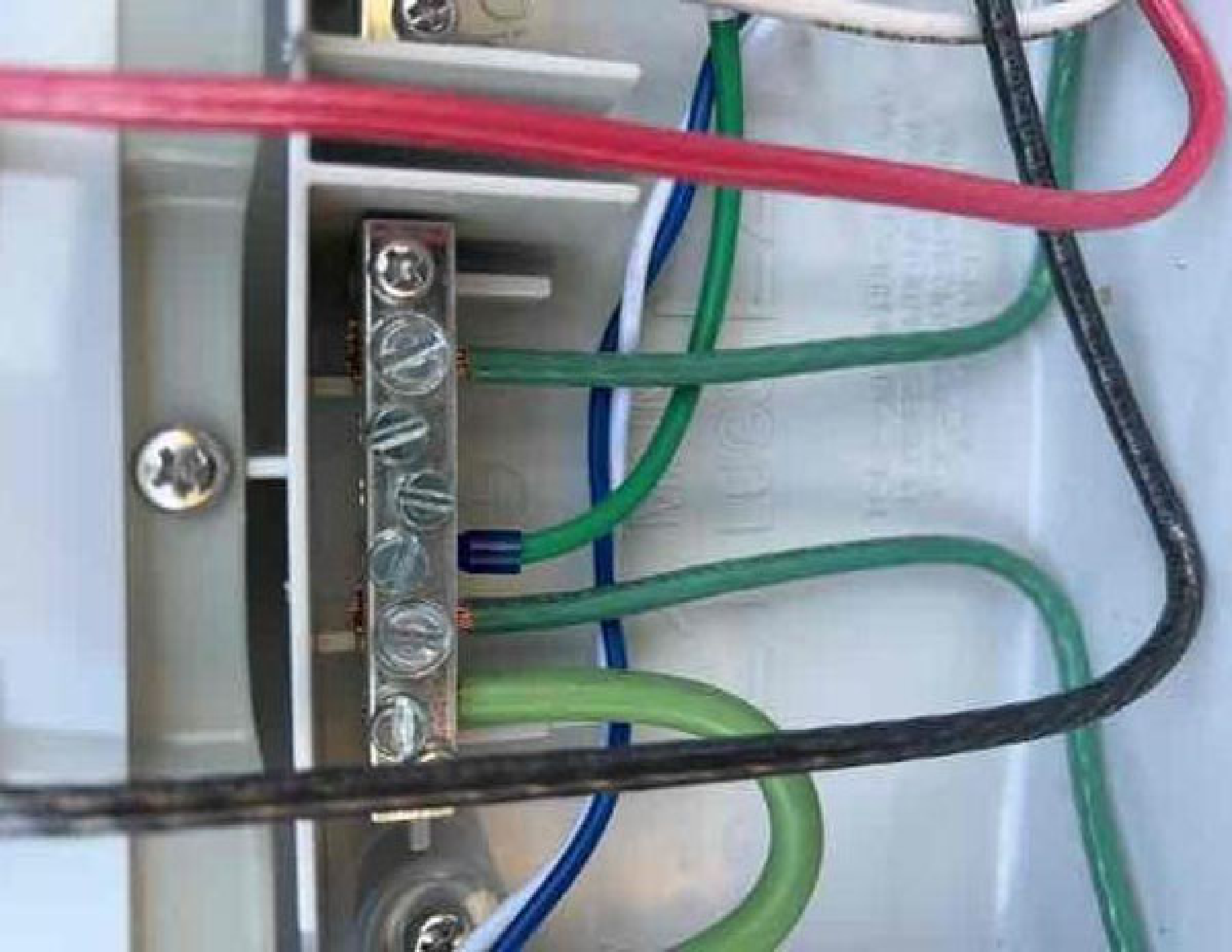






















All members - **Melcar Bay**
 CONTACT NAME **2-161-23**
 TELEPHONE NO.

Form 101

SAFETY CATEGORY	POSSIBLE DANGERS	RELEVANT EQUIPMENT
Person Safety	<ul style="list-style-type: none"> 1. Falls 2. Entrapment 3. Struck by or against 	HORNS / STRAP
Fall Protection	<ul style="list-style-type: none"> 1. Fall from 6' or greater 	ROPES
Personal Safety	<ul style="list-style-type: none"> 1. Head 	SHUT OFF
Head & Related Issues	<ul style="list-style-type: none"> 1. Sharp tools - 18" or longer 2. Rotational tools - 18" or longer 	WATER STRAPS
Public Protection	<ul style="list-style-type: none"> 1. Falling objects 2. Struck by 	
NEAREST HOSPITAL	Central Hammett	
SAFETY CONTACT		
Addressed Name		

Name _____
 Address _____
 City _____
 State _____
 Zip _____
 Phone _____

Order	Name	Order Member	Signature
1	Wate Hightower		WCH
2	Alfredo Daifino		AD
3	William Early		WE
4	William Daifino		WD
5	Alfredo Daifino		AD

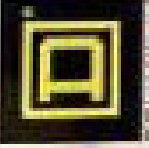
WATE HIGHTOWER **AD**
 Order Lead (Signature)

WARNING

UTILITY DISCONNECT LOCATED
Sandy, Utah 84092

PHOTOVOLTAIC AC DISCONNECT
MAXIMUM AC CURRENT: 15A
MAXIMUM AC VOLTAGE: 600V

**GENERAL DUTY
SAFETY SWITCH
INTERRUPTOR DE
SERVICIO GENERAL**
60 A
240 Vac / 1ϕ



⚠ DANGER / PELIGRO

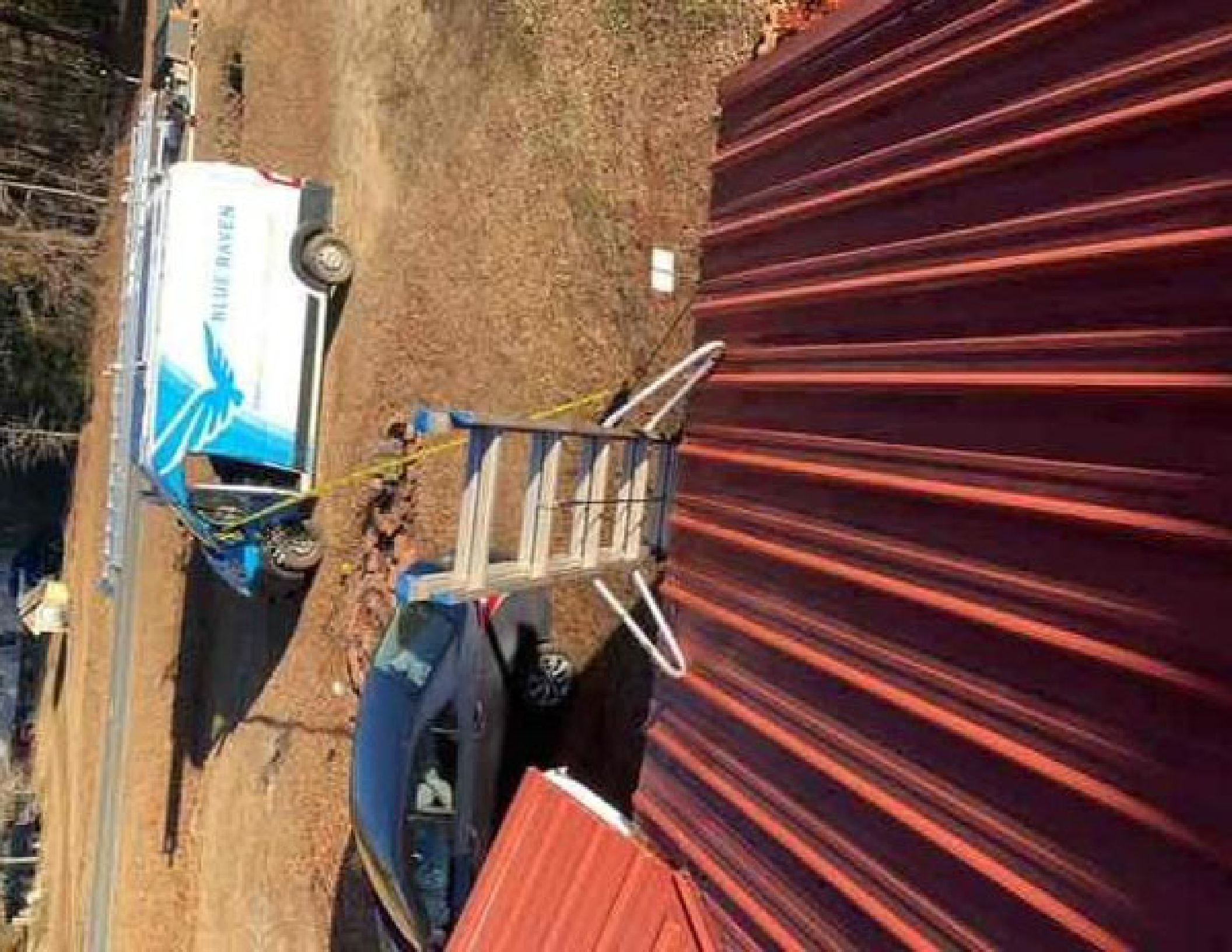


WARNING: This safety switch is designed to protect personnel from electrical shock and fire hazards associated with the disconnecting of photovoltaic systems. It is not intended for use as a general purpose switch. The switch is designed to be used in conjunction with a photovoltaic system and should be installed in accordance with the manufacturer's instructions. The switch is designed to be used in conjunction with a photovoltaic system and should be installed in accordance with the manufacturer's instructions. The switch is designed to be used in conjunction with a photovoltaic system and should be installed in accordance with the manufacturer's instructions.

WARNING

ELECTRIC SHOCK HAZARD
TERMINALS ON THE LINE AND
LOAD SIDES MAY BE ENERGIZED
IN THE OPEN POSITION

**RAPID SHUTDOWN SWITCH
FOR SOLAR PV SYSTEM**





Opel Rd Lillington, NC 27558

TrinaSolar
TSM-390DE09C 07



Maximum Power Voltage
Maximum Power Current
Open Circuit Voltage
Short Circuit Current
Maximum System Voltage
Module Efficiency
Standard Test Conditions
Maximum System Current

Power
V_{MPP}
I_{MPP}
V_{OC}
I_{SC}

Watt
33.5V
11.54A
40.0V
1.74A
75A
1200V
Class B

140-145V/11-150V

© 2014 Trina Solar, Inc. All rights reserved.
Trina Solar, Inc. 10000 N. Central Expressway, Suite 1000
Dallas, TX 75243, USA
Trina Solar, Inc. 10000 N. Central Expressway, Suite 1000
Dallas, TX 75243, USA
Trina Solar, Inc. 10000 N. Central Expressway, Suite 1000
Dallas, TX 75243, USA



WARNING-ELECTRICAL HAZARD
Do not touch products electricity when exposed to light.
Follow all applicable electrical safety precautions.

- Check the modules using Class B or Class C2 IEC 61215 and IEC 61730 for performance Type 1 or IEC 61730.
- Under-Panel Cable Safety: See installation instructions for electrical responsibility to determine specific Under-Panel Cable Safety and PV-Disconnect requirements for under-panel cables. Connect PV to an inverter or controller.
- Do not cut or bend the PV supports using common tools. Do not force removal of module supports or connections.



Trina Solar
10000 N. Central Expressway, Suite 1000
Dallas, TX 75243, USA
www.trinasolar.com
Assembled in Vietnam























NEH

ES

Helen Roy

305 James Chapel Rd. Lenoir, NC 27546

1079 587810

TrinaSolar
MADE IN CHINA
02102010001204

TrinaSolar

MADE IN CHINA



Model: TS-M100
Power: 100W
Voltage: 18V
Current: 5.56A
Efficiency: 20.5%

TrinaSolar
MADE IN CHINA
02102010001204

CE



RoHS



UL



TUV

GS

GS

GS

GS

GS

GS

GS

GS

GS

GS

GS









GS

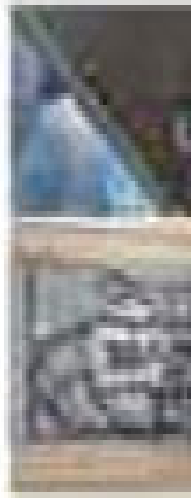
GS







<p>  MİLLÎ EĞİTİM BAKANLIĞI T.C. Milli Eğitim Bakanlığı Fen Bilimleri Öğretmenleri İçin </p>	<p>  Basit Sargı </p>	<p>  Çift Sargı </p>	<p>  Fiziksel Sargı </p>
<p>  MİLLÎ EĞİTİM BAKANLIĞI T.C. Milli Eğitim Bakanlığı Fen Bilimleri Öğretmenleri İçin </p>	<p>  Basit Sargı </p>	<p>  Çift Sargı </p>	<p>  Fiziksel Sargı </p>

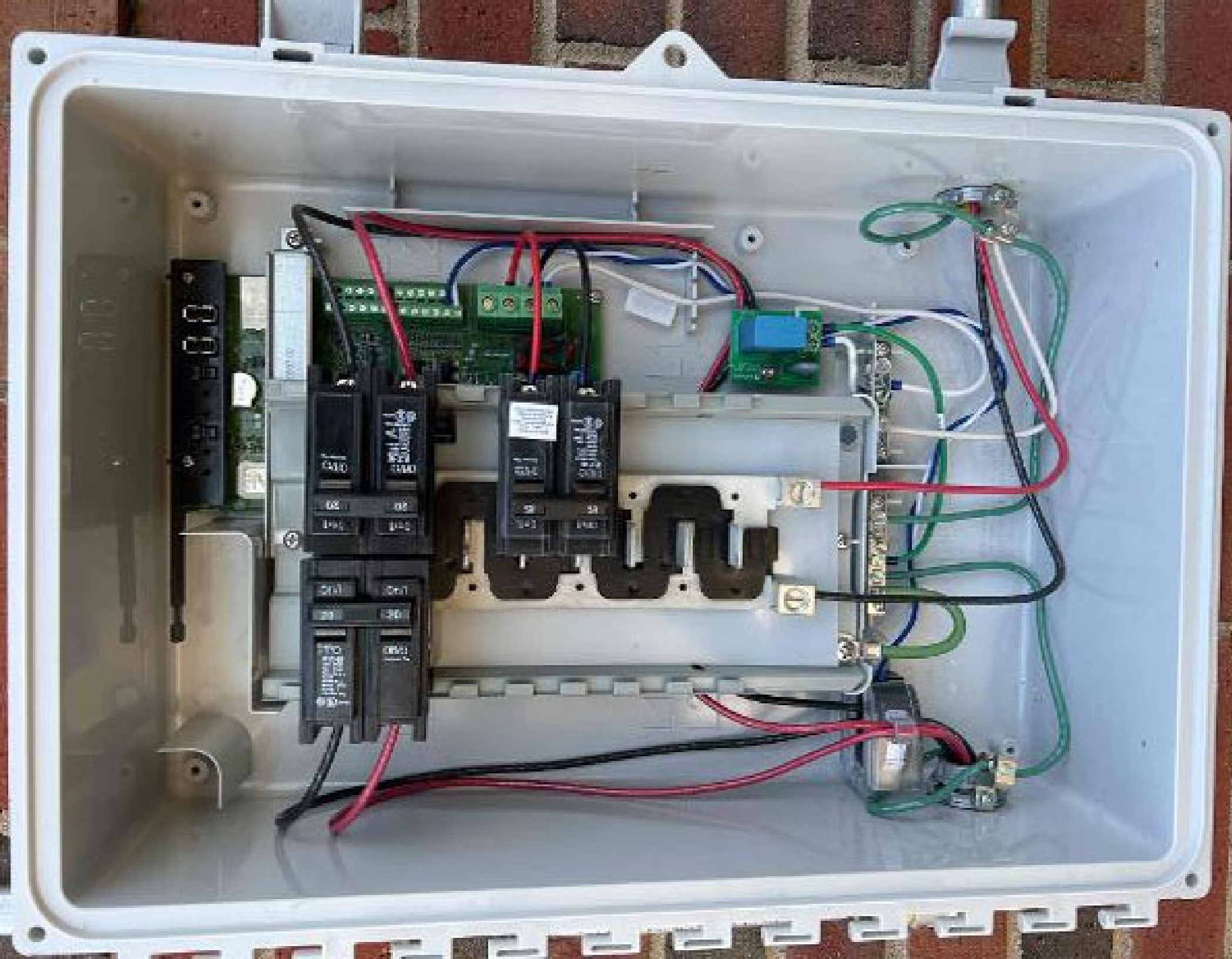


These are Portrait NOT Land











PERPELIGRO

Este equipo puede ser peligroso si no se usa correctamente. No toque las partes internas del equipo cuando esté encendido. No abra el equipo si no está autorizado para ello. Consulte a un electricista calificado para cualquier trabajo de mantenimiento o reparación.

PRECAUCIONES

Este equipo debe ser instalado y mantenido por personal calificado. No se debe tocar el equipo cuando esté encendido. No se debe abrir el equipo si no está autorizado para ello. Consulte a un electricista calificado para cualquier trabajo de mantenimiento o reparación.

ESPECIFICACIONES

Este equipo está diseñado para operar a 120V AC, 60Hz. La potencia máxima es de 4000W. El equipo debe ser instalado en un lugar seco y protegido de la intemperie.

INFORMACIÓN ADICIONAL

Este equipo cumple con los requisitos de la Norma IEEE 1582-2005. Para más información, consulte el manual de usuario.

CONTACTO

Si necesita asistencia técnica, contacte con nuestro servicio al cliente al número 1-800-123-4567. También puede encontrar información en nuestro sitio web: www.empresa.com

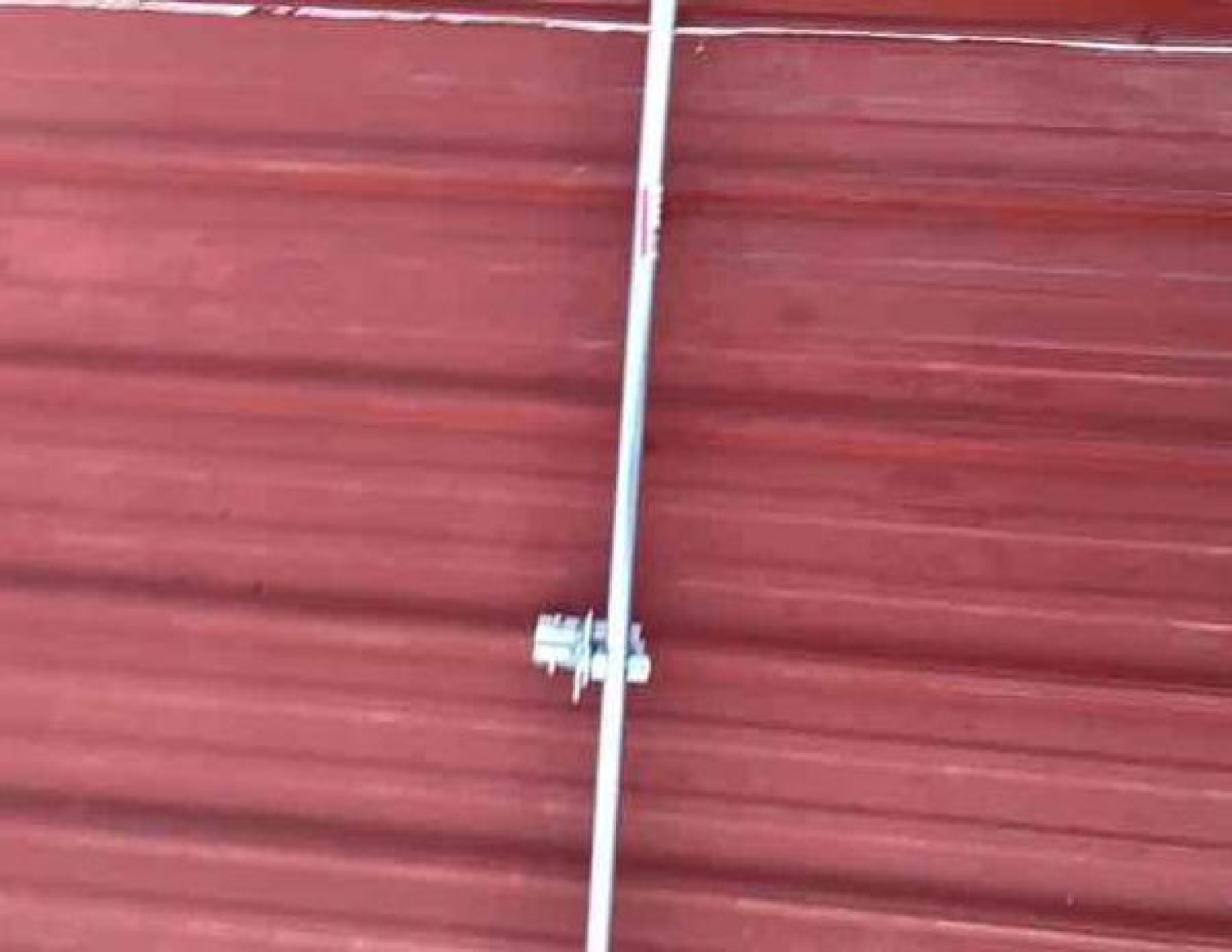
NOTAS

Este equipo no debe ser usado para fines no autorizados. No se debe modificar el equipo. Cualquier modificación puede anular la garantía.

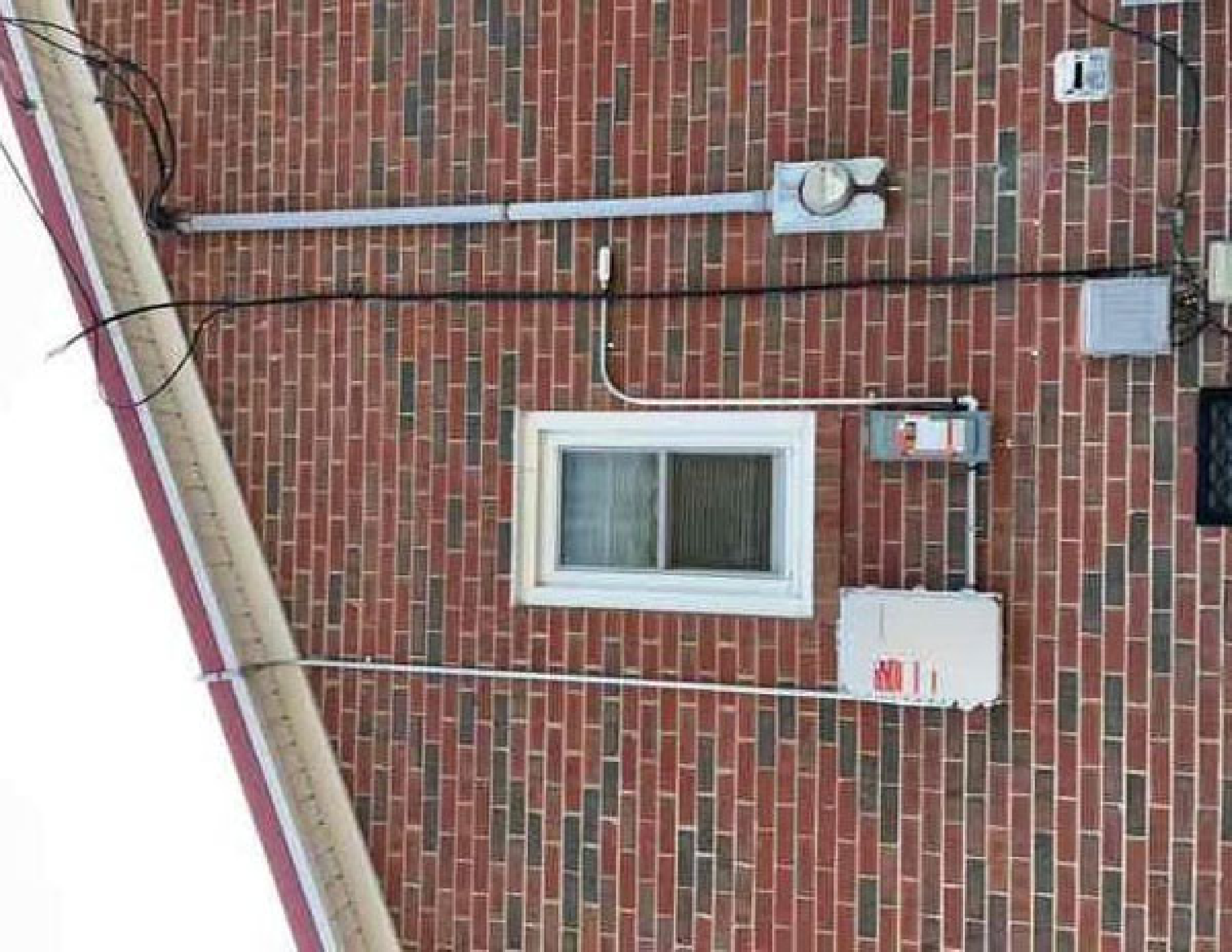












































Device name location

Only used by installers during installation - do not configure this system
Workings is 15-minute state for operators when the power line

All LEDs

- Flashing green when software upgrade is in progress
- Flashing amber when IQ Combiner is flashing up



IQ Combiner 4
Photovoltaic
Combiner Box
X-IQ-AM1-240-4



Electrical ratings

Voltage: 240VAC, 60Hz
 DC Breakers: 60A MAX (comb need)
 DC Inputs: 64A MAX (comb need)
 Output: 65A MAX, 60A MAX feeder CCMO
 Temperature: 40°C Max ambient
 For DED Breaker, use only 5.0mm (20 AWG) or



202249055953

202249055953

603-00358 21

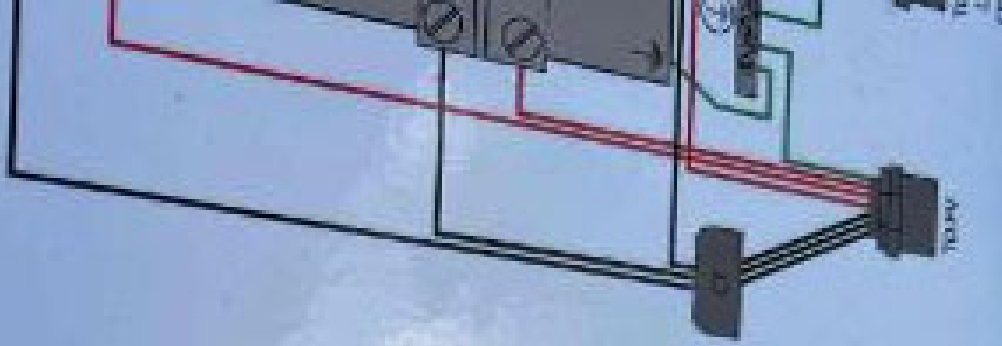
See table for and IQ Combiner Box for next field search
10 AMP or 15 AMP (3) Single Pole Breaker not used for backfeed

Construction	Wire Size	Voltage
DC Breaker (1, 2, 3, 4)	14-18 AWG 8 AWG	2.2 Min (20 AWG) 2.8 Min (25 AWG) 3.0 Min (27 AWG)
	6-8 AWG	3.0 Min (25 AWG)
	4-10 AWG	3.0 Min (25 AWG)
60A Circuit Breaker only 60A Single Pole	14-18 AWG	2.2 Min (20 AWG) 2.8 Min (25 AWG) 3.0 Min (27 AWG)
	6-8 AWG 8 AWG	3.0 Min (25 AWG) 3.0 Min (27 AWG)
Neutral and ground	Large screw	3.0 Min (25 AWG) 2.8 Min (25 AWG) 2.8 Min (27 AWG)
	Small screw	3.0 Min (25 AWG) 2.8 Min (25 AWG) 2.8 Min (27 AWG)
Mounting	10-14 AWG 8-10 AWG	3.0 Min (25 AWG) 2.8 Min (25 AWG) 2.8 Min (27 AWG)

Copper conductors only (steel wire, 75°C)
 Follow IEEE 263 (IEEE 315) or NEC CECI part 1, and all local codes.
 For DC Breaker Single Pole 60A, 100 amp installation for 60V
 See also IEEE 263-2011

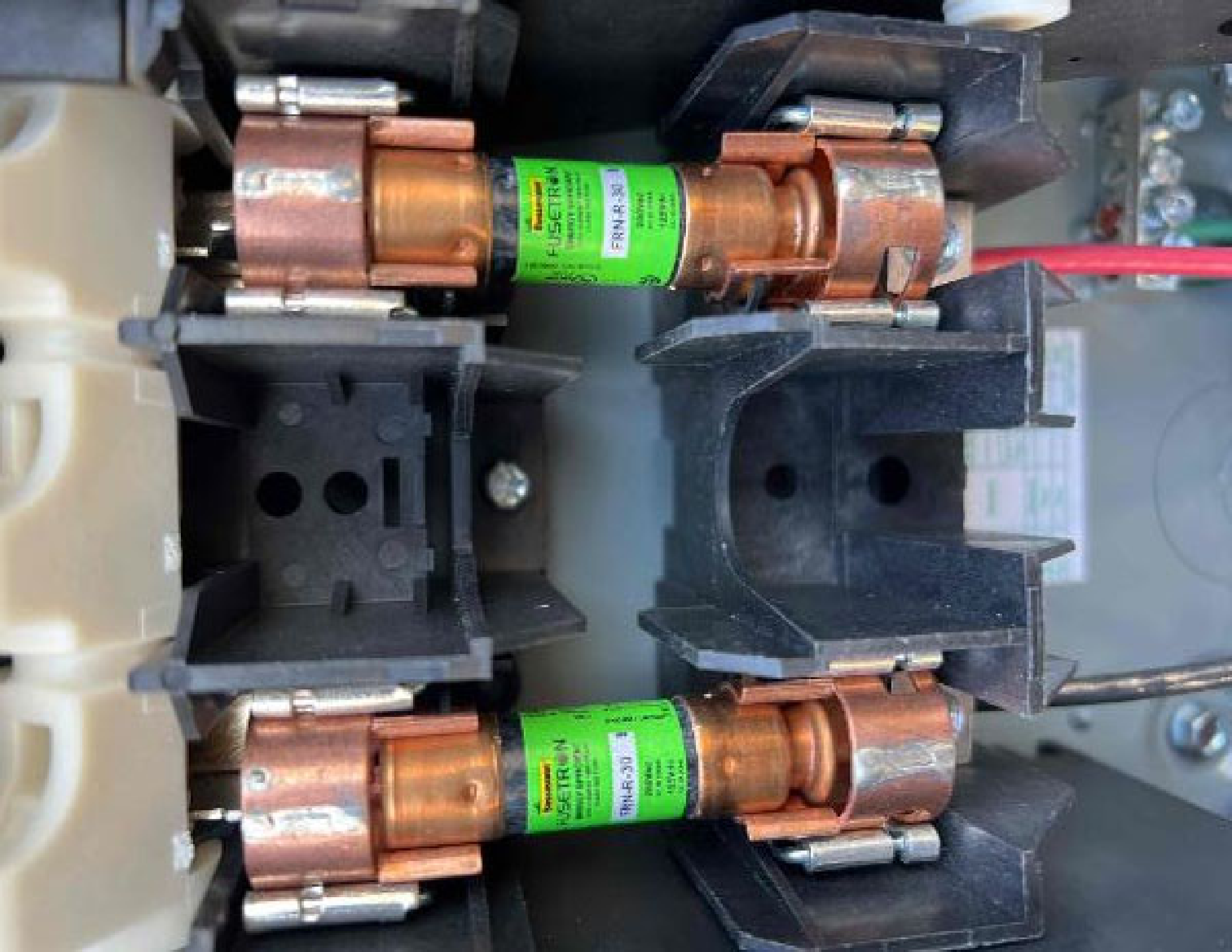
Designed by Luminaire and Power Equipment
 Made in Mexico

For IQ-8 C
 Forming S









FUSETRON
FRM-R-30
30 AMP
125VAC
1/2" DIA.

FUSETRON
FRM-R-30
30 AMP
125VAC
1/2" DIA.



Closing cap included - Order two separately per main direction.
Caequillo de cierre incluido - Solicite los receptáculos por separado
según el cuadro de receptáculos que aparece más abajo.
Capuchon de fermeture inclus - Commandez les manchons séparés
en suivant le tableau des manchons ci-dessous.



