

CL200 240V 3W TYPE CWH 307A 1.0KVA
122 1F1632 167 6A 0.3
DUKE ENERGY PROGRESS
332 282 195
FURNACE
OpenWay

ME
Permit &
919-55

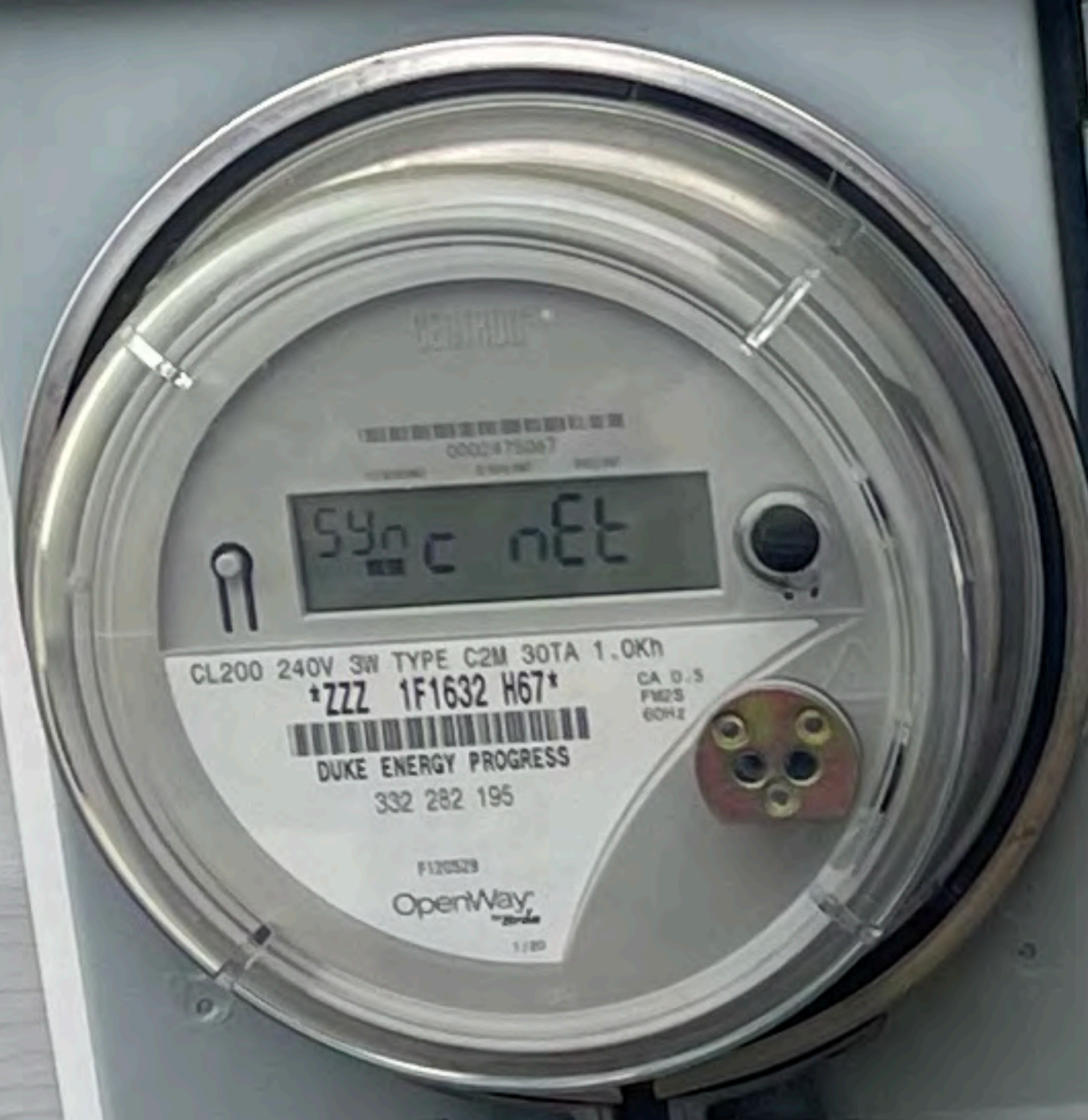
CAUTION TO THE USER
DO NOT OPEN THIS COVER
UNLESS YOU ARE A QUALIFIED
ELECTRICIAN
DANGER TO LIFE AND LIMB
ELECTRIC SHOCK HAZARD
DO NOT TOUCH THE WIRING
OR COMPONENTS INSIDE
THIS EQUIPMENT











TURN OFF MAIN BREAKER BEFORE USING GENERATOR!!!!

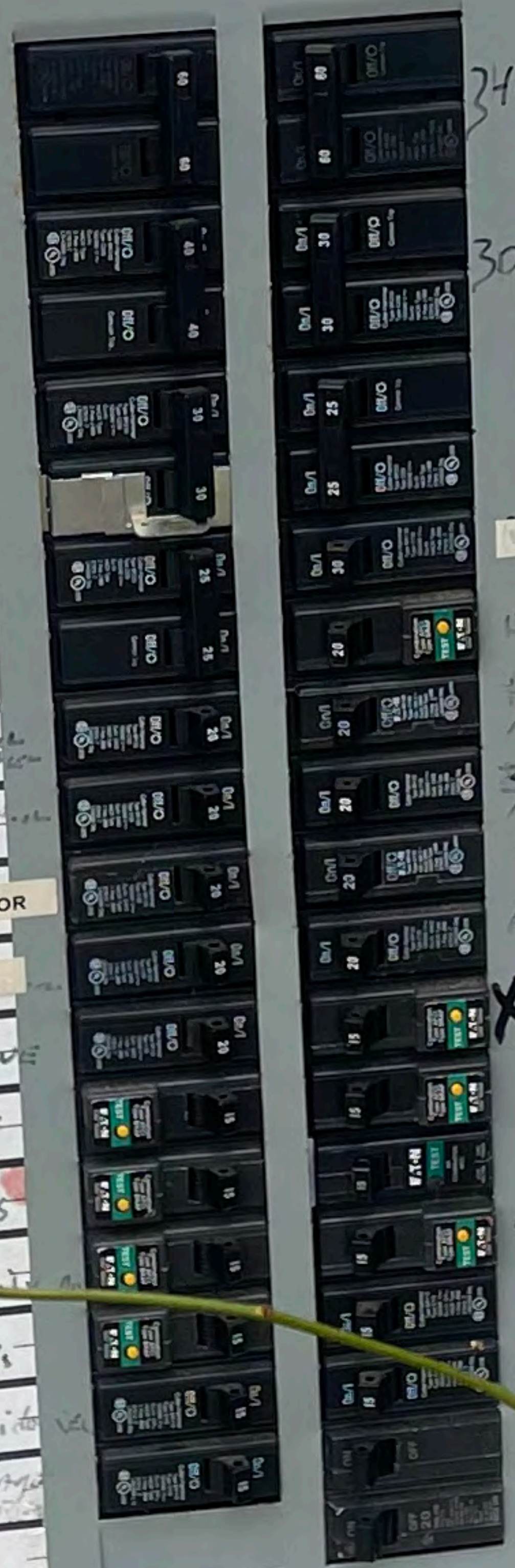
INSTRUCTIONS FOR USING GENERATOR
1. Plug up BOTH ends of generator cord.
2. Turn off all 240 volt breakers.
3. Turn on generator.
4. Turn on generator 30 amp breaker.

To Turn Off Generator and Restore Power:
1. Turn off generator.
2. Turn on generator 30 amp breaker.
3. Unplug both ends of generator cord.
4. Turn on 240 volt breakers.
5. Turn on MAIN breaker.

INSTRUCTIONS FOR USING GENERATOR
1. Plug up BOTH ends of generator cord.
2. Turn off all 240 volt breakers.
3. Turn on generator.
4. Turn on generator 30 amp breaker.

To Turn Off Generator and Restore Power:
1. Turn off generator.
2. Turn on generator 30 amp breaker.
3. Unplug both ends of generator cord.
4. Turn on 240 volt breakers.
5. Turn on MAIN breaker.

Handwritten labels for breakers:
HEAT
30 AMP
RV/GENERATOR
REFRIGERATOR
WASHER
LIFE'S
LIFE'S
LIFE'S
GARAGE



Handwritten labels for breakers:
HEAT
30 AMP
RV/GENERATOR
REFRIGERATOR
WASHER
LIFE'S
LIFE'S
LIFE'S
GARAGE















A

THICKNESS 0.406 IN.

HUBER

SFI
Certified Filler Reestop
www.sfiproducts.com

SPACE 1/8 INCH
AT SQUARE EDGES
SELF SPACING EDGES
PROFILED EDGES ON
THIS SIDE DOWN







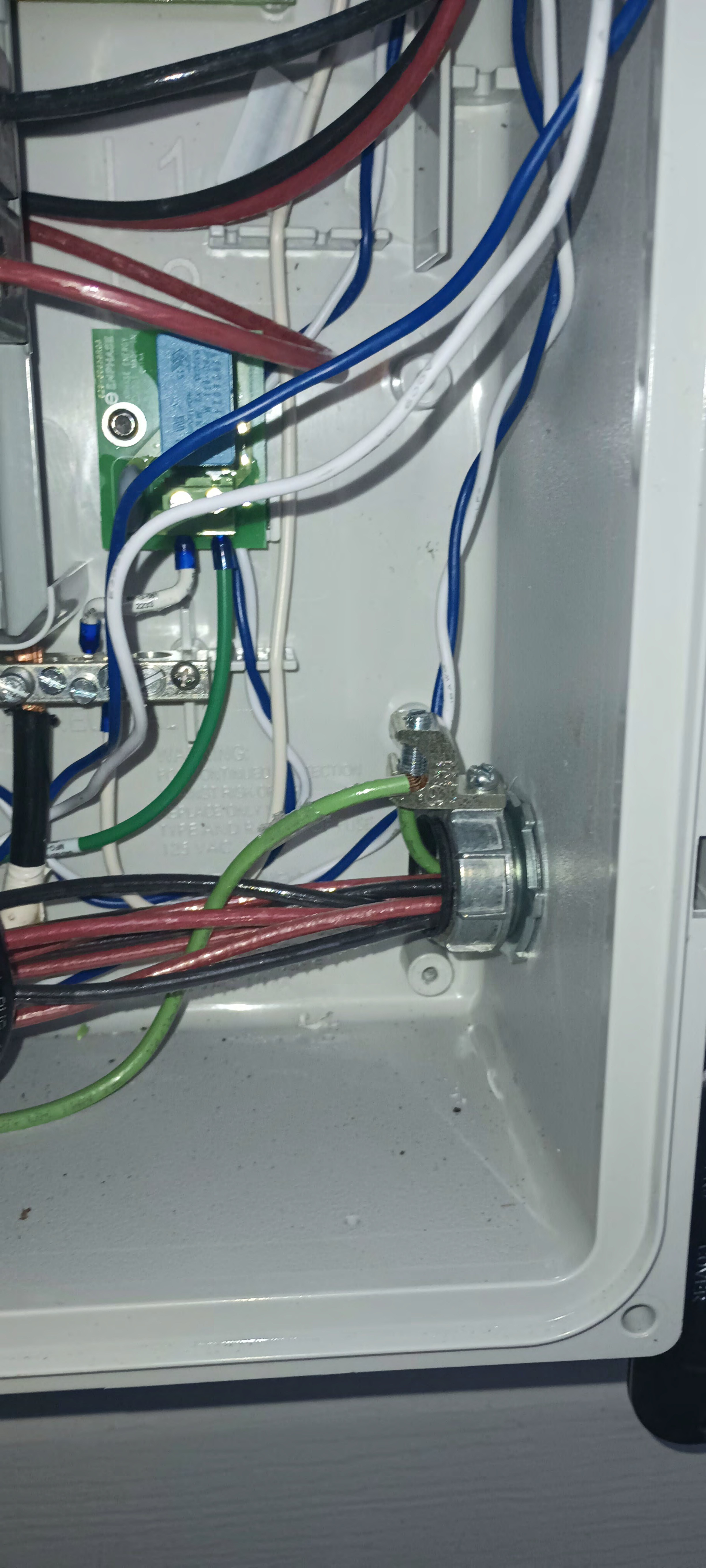








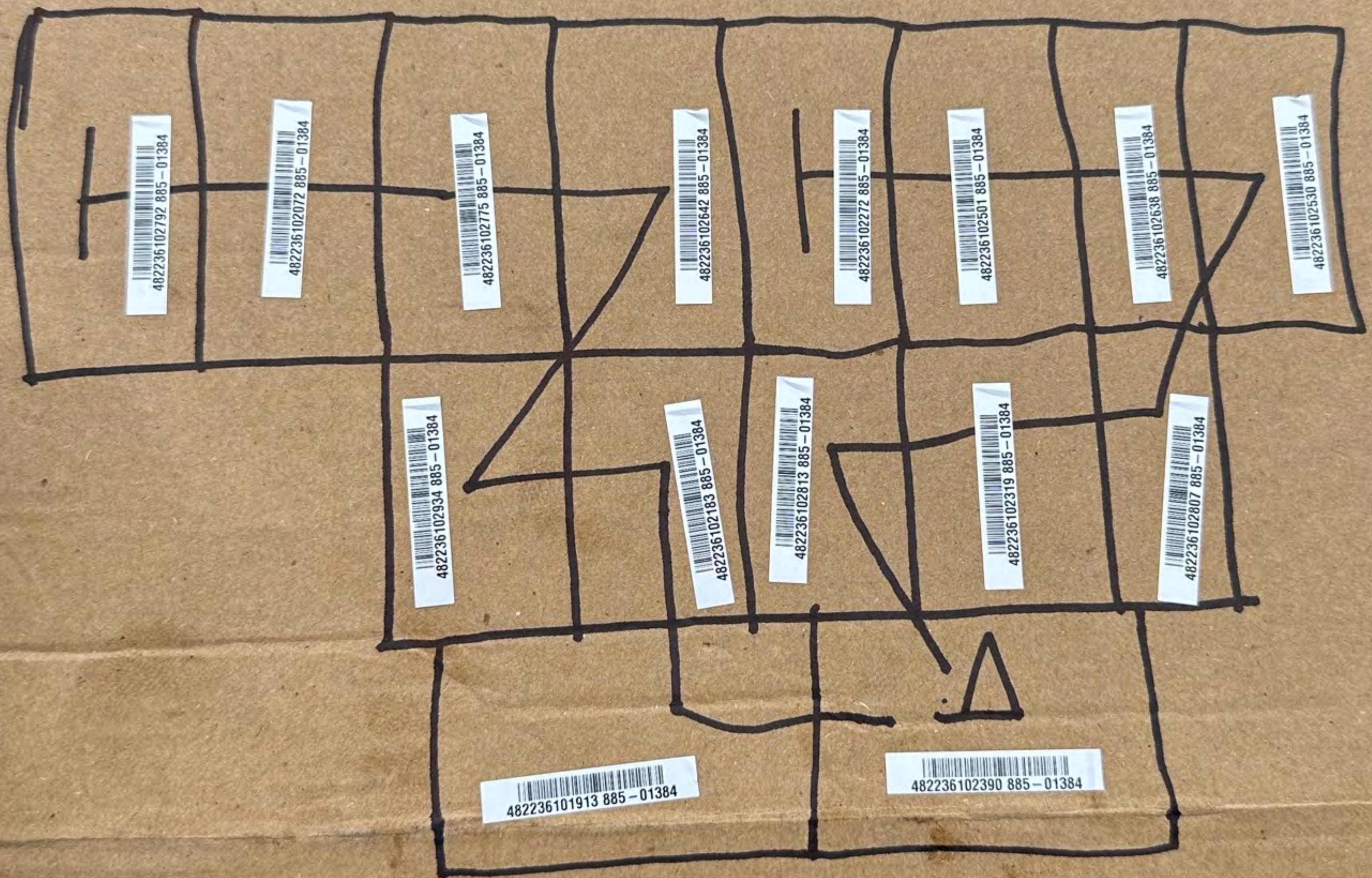


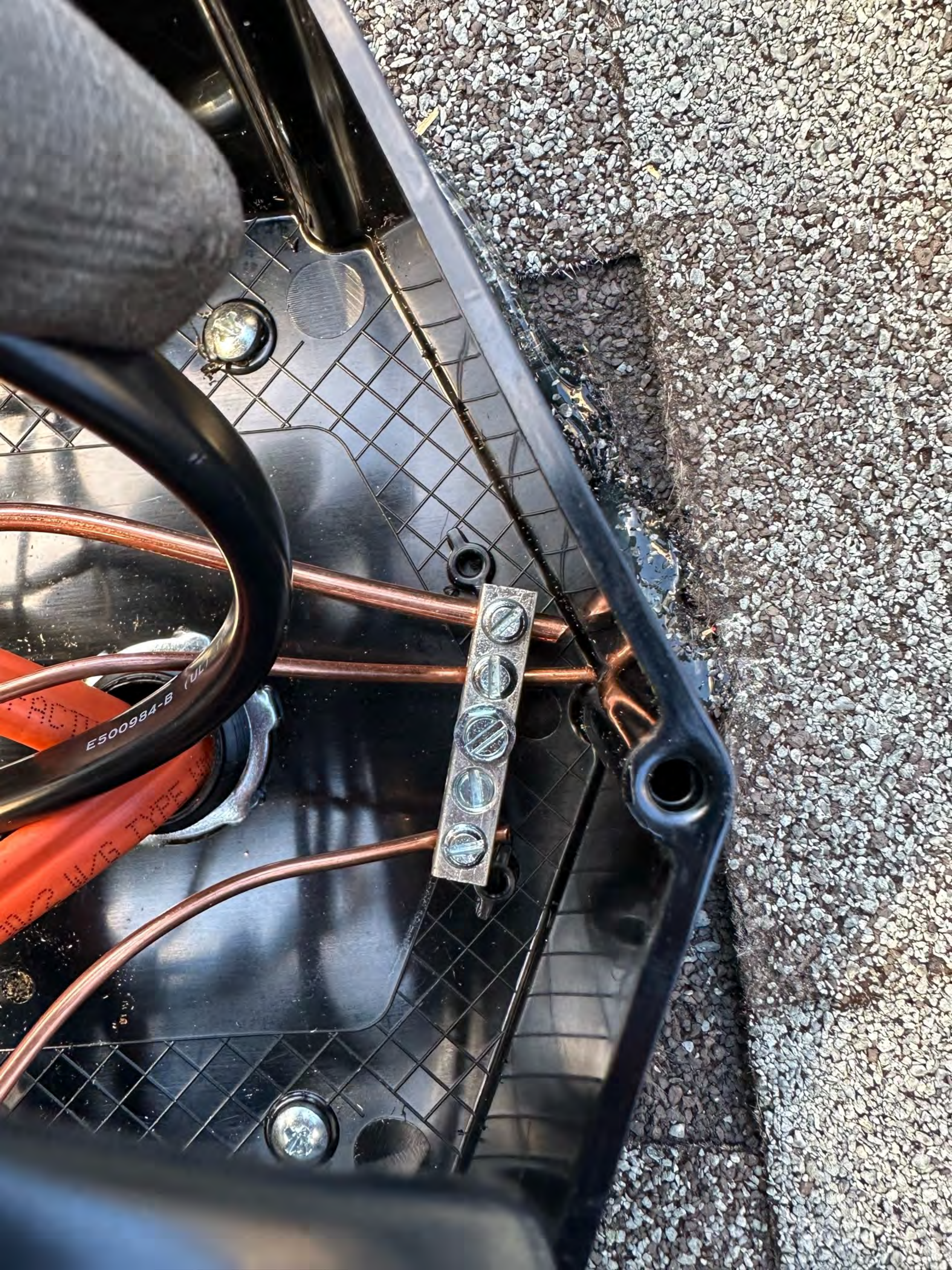




△ = Solar Deck

┌ = Start of Strings





A = Solar Deck

T = Start of Strings

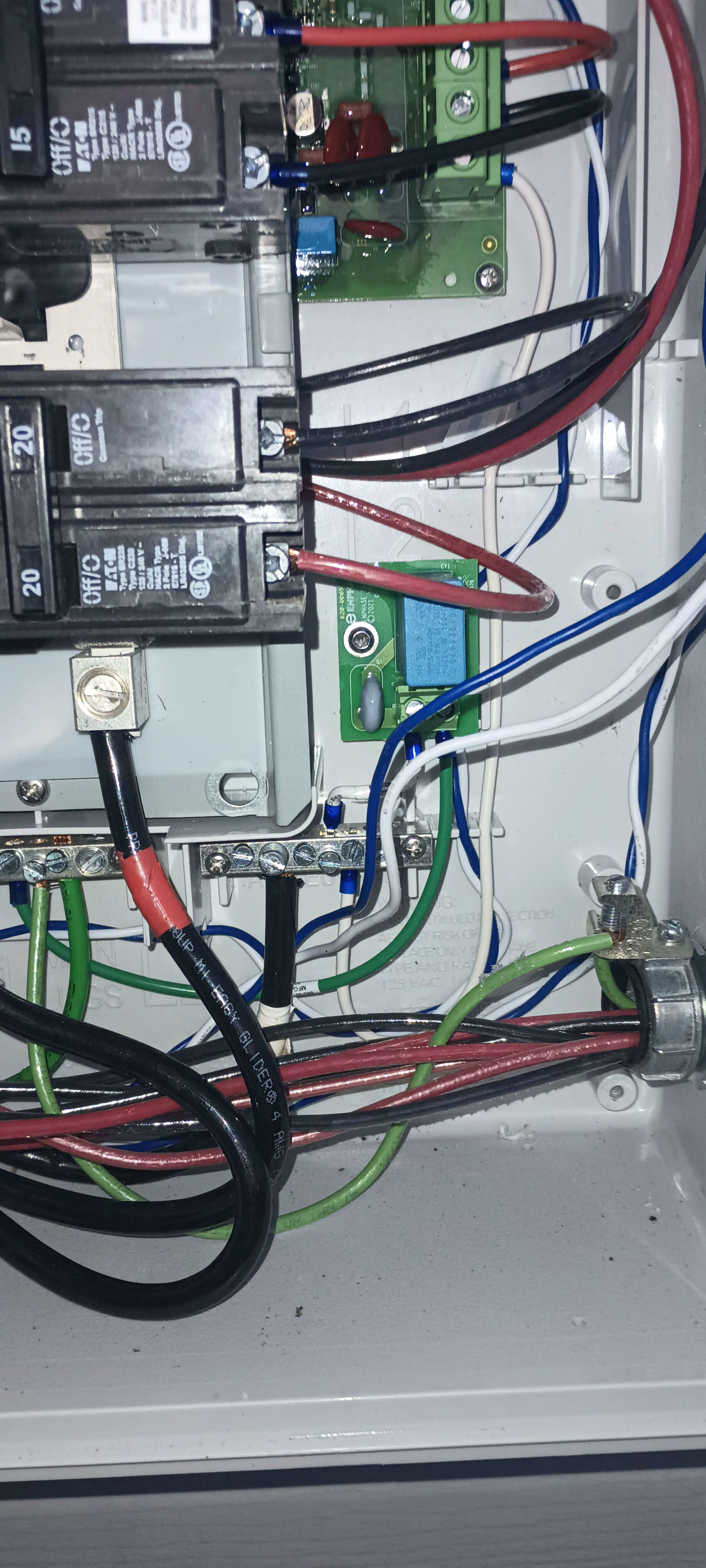












15

Off/On

20

Off/On

20

Off/On

WAT-11
Type: 20A
Type: C220
120/240V
Circuit Type
2 Pole, 3-Phase
EPR-1, T
Listed Under
UL 489

620-0055
ENPHASE
ENPHASE © 2021

125 VAC

CONTINUED PROTECTION
RISK OF
ONLY
TYPE AND RATING
125 VAC

ULIP-MIL-EPHY-6L IDEP-4 Plus











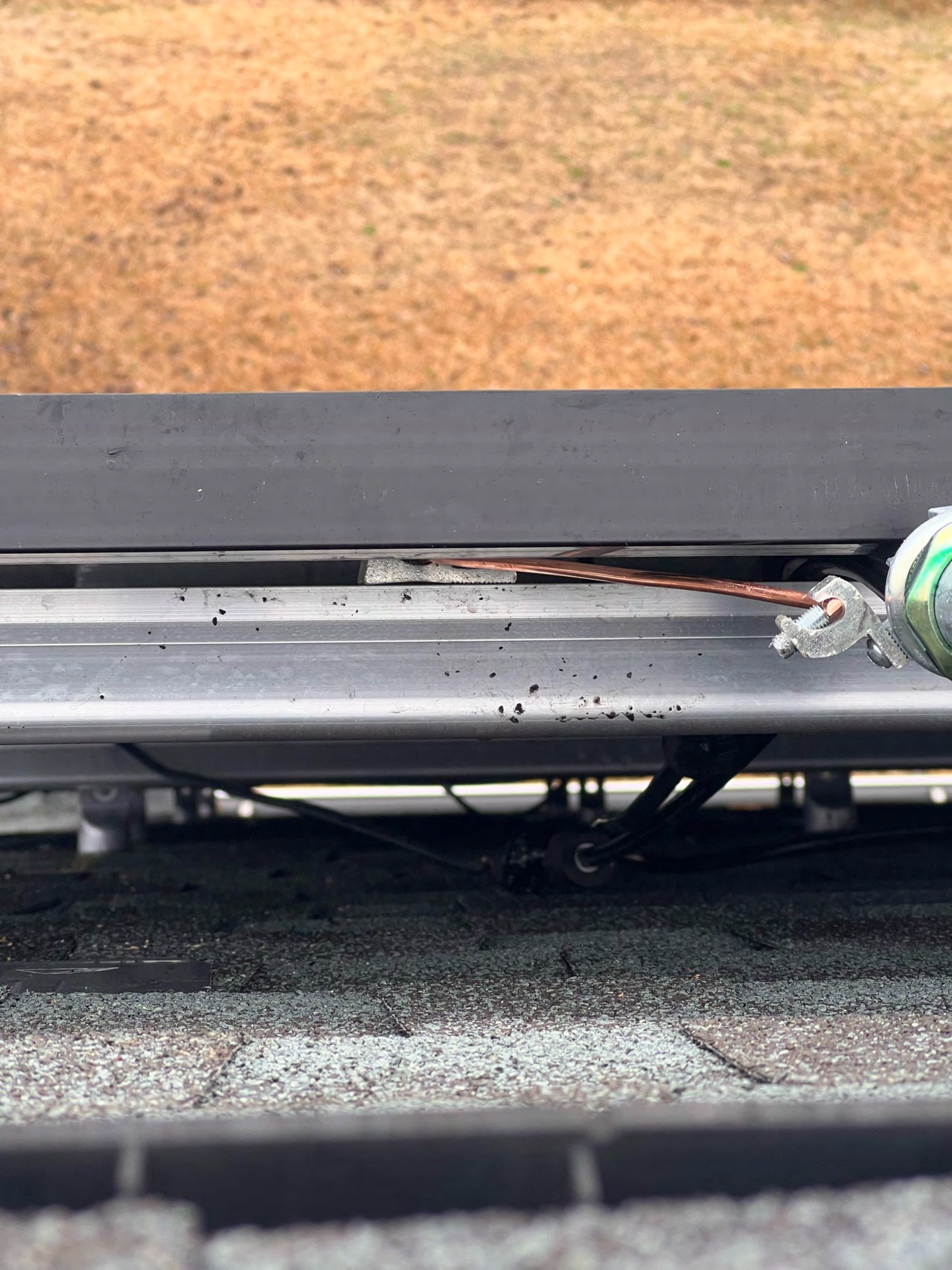


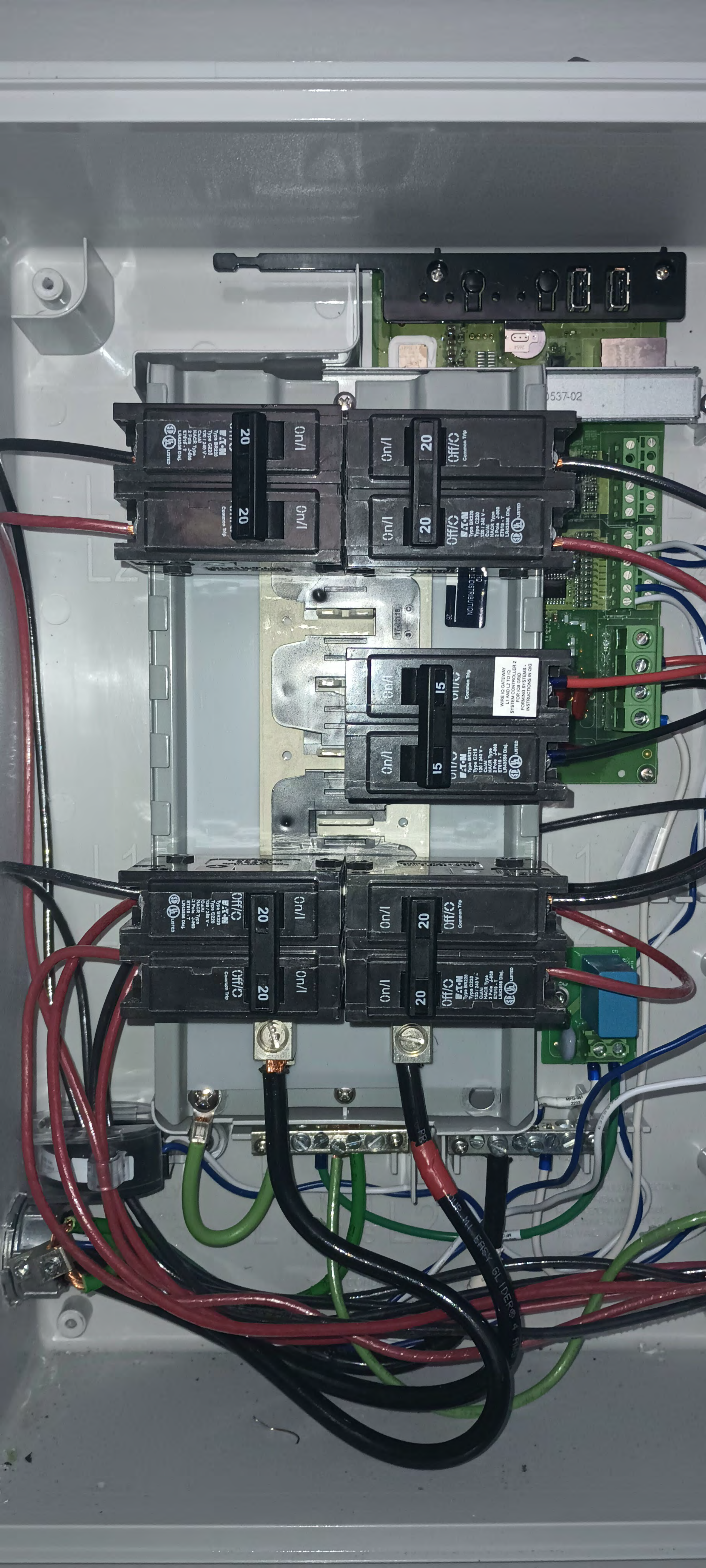












Offic/Offic
Common Trip
Type BR220
Type C220
120 / 240 V -
Circuit
NACR Type
2 Pole - 480
E-TRIP - 7-480
Listed Dup.
20
On/I

Offic/Offic
Common Trip
Type BR220
Type C220
120 / 240 V -
Circuit
NACR Type
2 Pole - 480
E-TRIP - 7-480
Listed Dup.
20
On/I

Offic/Offic
Common Trip
Type BR115
Type C115
120 / 240 V -
Circuit
NACR Type
2 Pole - 480
E-TRIP - 7-480
Listed Dup.
15
On/I

WIRE LO GATEWAY
LI AND L2 TO
SYSTEM CONTROLLER 2
FOR ICS GRID
FOR ICS SYSTEMS -
INSTRUCTIONS IN ICS

Offic/Offic
Common Trip
Type BR220
Type C220
120 / 240 V -
Circuit
NACR Type
2 Pole - 480
E-TRIP - 7-480
Listed Dup.
20
On/I

Offic/Offic
Common Trip
Type BR220
Type C220
120 / 240 V -
Circuit
NACR Type
2 Pole - 480
E-TRIP - 7-480
Listed Dup.
20
On/I

0537-02

47-3116

6L I DER 6







02

E5009

MFR61

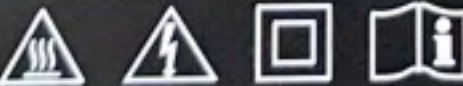


 ENPHASE®

IQ8+

Grid Support Utility Interactive Inverter
Multimode Inverter

Off-grid Power Factor: -1 to 0 to +1
Grid-tied Power Factor: +/- 0.85
DC input range: 25-58 V
Max. input short-circuit current: 15 A
Max. input continuous current: 10.6 A
AC output voltage: 240 V
AC output current: 1.21 A
AC output frequency: 60 Hz
AC output power (max. continuous): 290 VA
Operating temperature: -40 °C to +60 °C
Ingress protection: NEMA Type 6
Photovoltaic Rapid Shutdown Equipment
NEC 690.12 and C22.1 2015 Rule 64-218
UL 1741 SA Compliant | Assembled in India



This device complies with part 15 of the FCC Rules. Operation is subject to the following two conditions: (1) This device may not cause harmful interference. (2) This device must accept any interference received, including interference that may cause undesired operation.



CAUTION: RISK OF SHOCK. WARRANTY VOID IF COVER REMOVED. NO USER SERVICEABLE PARTS INSIDE. REFER SERVICING TO QUALIFIED SERVICE PERSONNEL.

WARNING: ELECTRIC SHOCK HAZARD. DC CONDUCTORS OF THIS PHOTOVOLTAIC SYSTEM ARE UNGROUNDED AND MAY BE ENERGIZED. AC AND DC VOLTAGE SOURCES TERMINATE INSIDE THIS EQUIPMENT. DISCONNECT BOTH BEFORE SERVICING. PHOTOVOLTAIC ARRAY SUPPLIES A DC VOLTAGE TO THIS EQUIPMENT WHEN EXPOSED TO LIGHT. HOT SURFACES: TO REDUCE THE RISK OF BURNS - DO NOT TOUCH.

ATTENTION: RISQUE D'ELECTROCUTION. LES CONDUCTEURS DC DE CE SYSTEME PHOTOVOLTAIQUE NE SONT PAS RELIES A LA TERRE ET PEUVENT ETRE SOUS TENSION. DES SOURCES DE TENSION CA ET CC SONT CONNECTEES A CET APPAREIL. ISOLER LES DEUX SOURCES AVANT TOUTE INTERVENTION. LES CABLES COURANT CONTINU SONT SOUS TENSION LORSQUE LE CHAMP PHOTOVOLTAIQUE EST EXPOSE A LA LUMIERE. RISQUE DE BRULURE. NE PAS TOUCHER.

Do not disconnect under load.

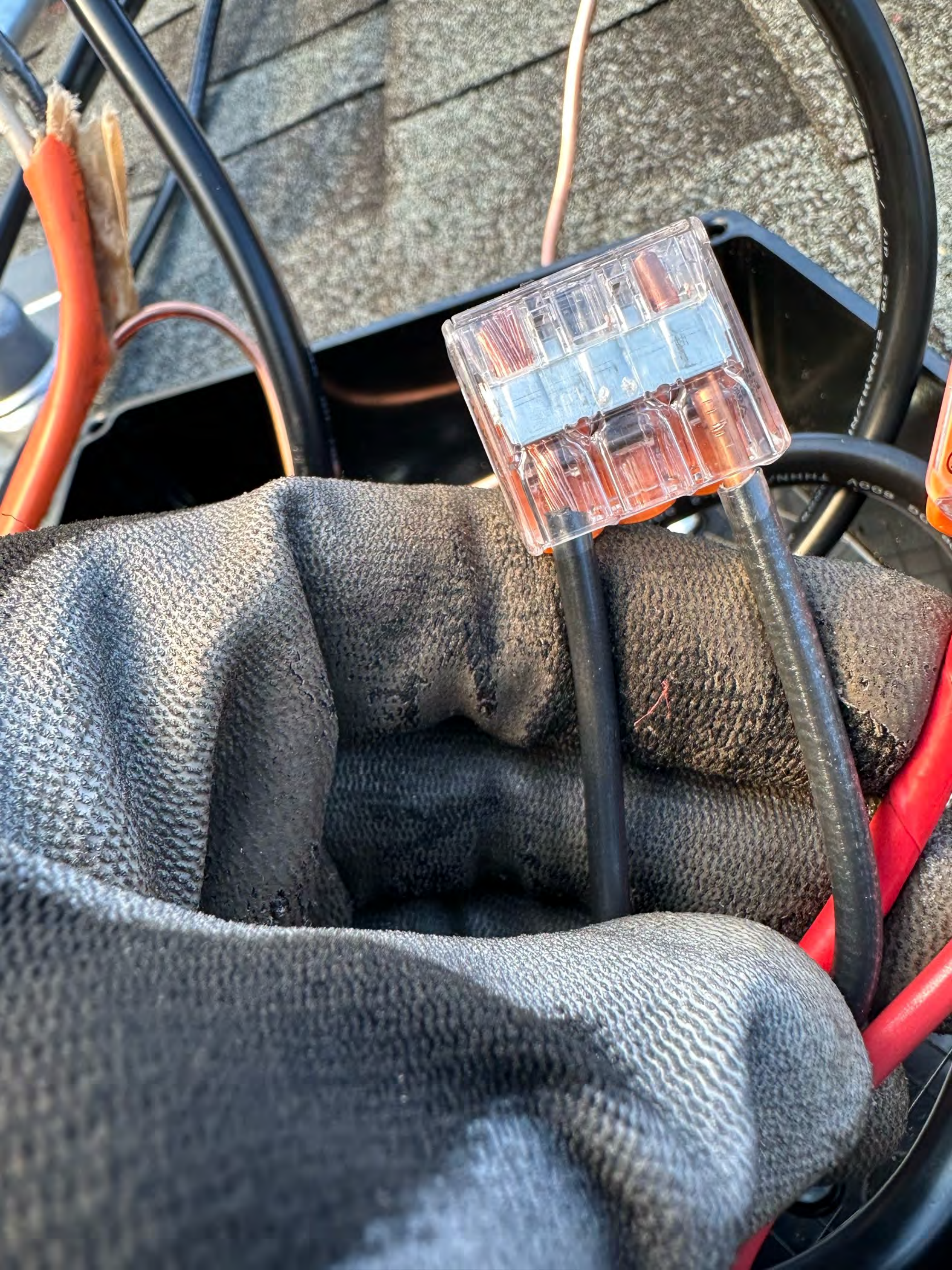






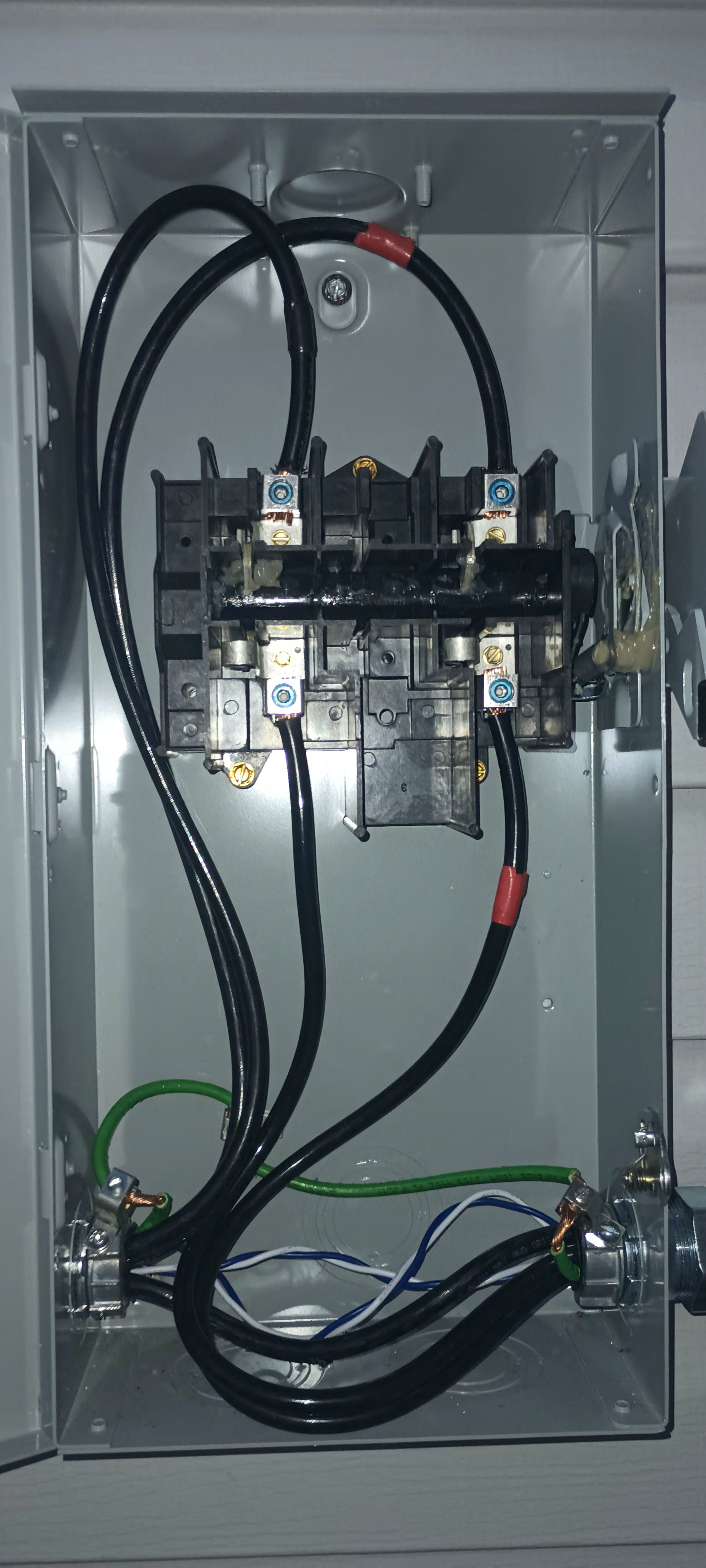


WAGO
221











250 Vac MAX
200A 0.5V 4E

250 Vac MAX
200A 0.5V 4E

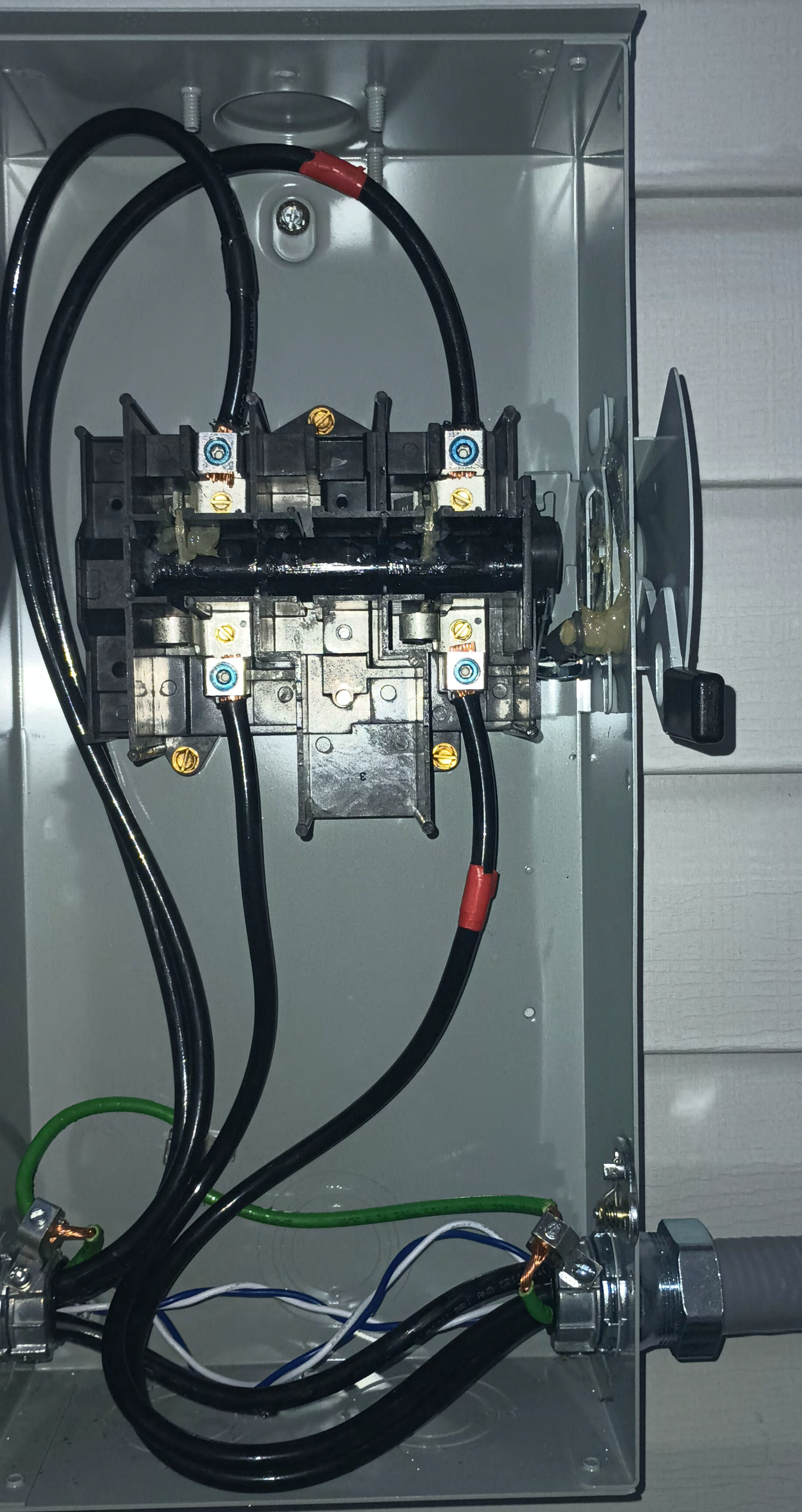


E 352









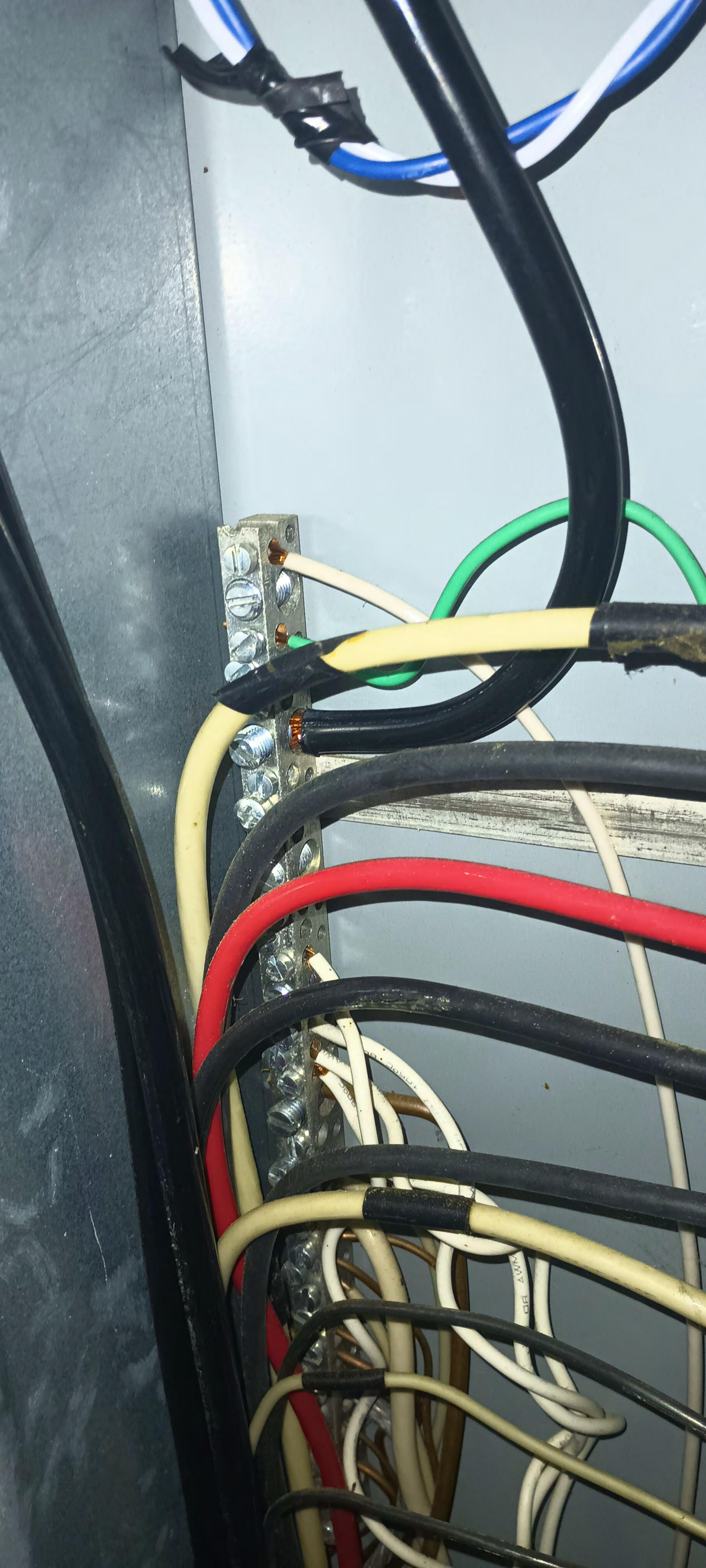


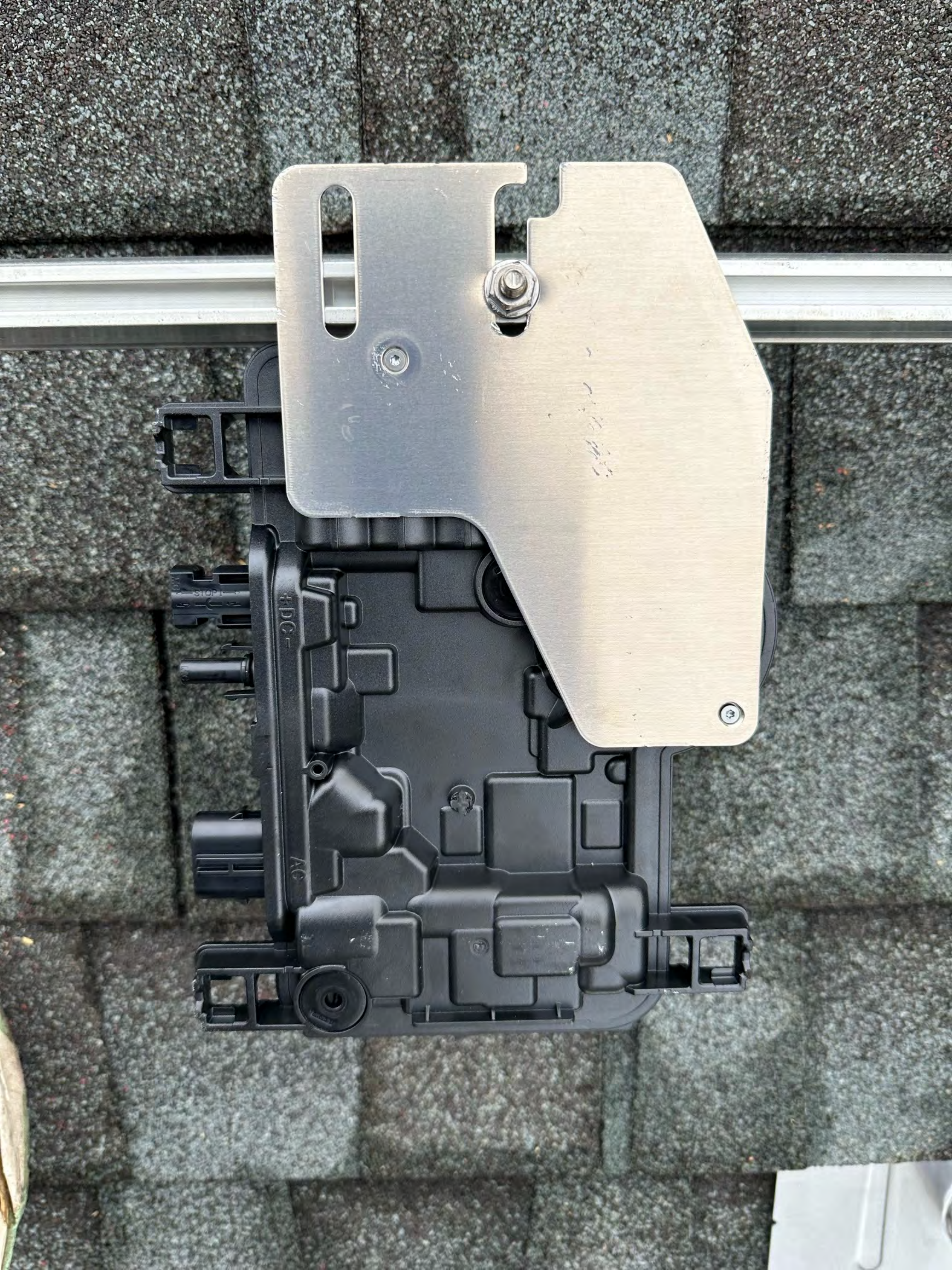
840-00388-17
250VAC 20A
+79°C 2246

THIN/THIN-2 90C 31V / 1.5L 2.1L 1.5L 1.5L
600V THIN/THIN-2 90C 31V / 1.5L 2.1L 1.5L 1.5L
Type D6 600V THIN/THIN-2 90C 31V / 1.5L 2.1L 1.5L 1.5L
UL Type D6 600V THIN/THIN-2 90C 31V / 1.5L 2.1L 1.5L 1.5L

0917







STOP

120V

AO













CAT# 14982

ES5000
MIRREX

THIN/THWN-2 90C 87Y / wt. 2/C 12AWG -40C oil res | sunlight resistant FT4 sunres 90HS

840-00388-17
250VAC 20A
+79°C 2246

DC BODY THIN