

Do Not Remove 170B82EF-93



Intertek
4004590



SolarEdge Technologies Ltd.
SolarEdge Technologies GmbH/
Werner-Eckert-Straße 6/81829 Munich/Germany

FC

CAUTION

HOT SURFACES-TO REDUCE THE RISK OF BURNS-DO NOT TOUCH. RISK OF ELECTRIC SHOCK-WHEN THE PHOTOVOLTAIC ARRAY IS EXPOSED TO LIGHT, IT SUPPLIES A DC VOLTAGE TO EQUIPMENT. COVER PV MODULE WITH OPAQUE MATERIAL BEFORE CONNECTING OR DISCONNECTING THIS OPTIMIZER. DURING FAULT, ZERO CURRENT IS SOURCED INTO DC ARRAY BY CONVERTER.

WARNING

ELECTRIC SHOCK HAZARD. THE DC CONDUCTORS OF THIS PHOTOVOLTAIC SYSTEM ARE UNGROUNDED AND MAY BE ENERGIZED.

AVERTISSEMENT

RISQUE DE CHOC ELECTRIQUE: QUAND LE CHAMP PHOTOVOLTAIQUE EST EXPOSE A LA LUMIERE, UNE TENSION CC EST FOURNIE A CET EQUIPEMENT. SURFACES CHAUDES: NE PAS TOUCHER, AFIN DE REDUIRE LES RISQUES DE BRULURES LE COURANT DE RETOUR INJECTE PAR LE CONVERTISSEUR EN CAS DE DEFAILLANCE DANS LE MODULE PV EST TOUJOURS NUL.



WET 1000V OR 2000V DRY 50°C

PV WIRE 12AWG 105°C



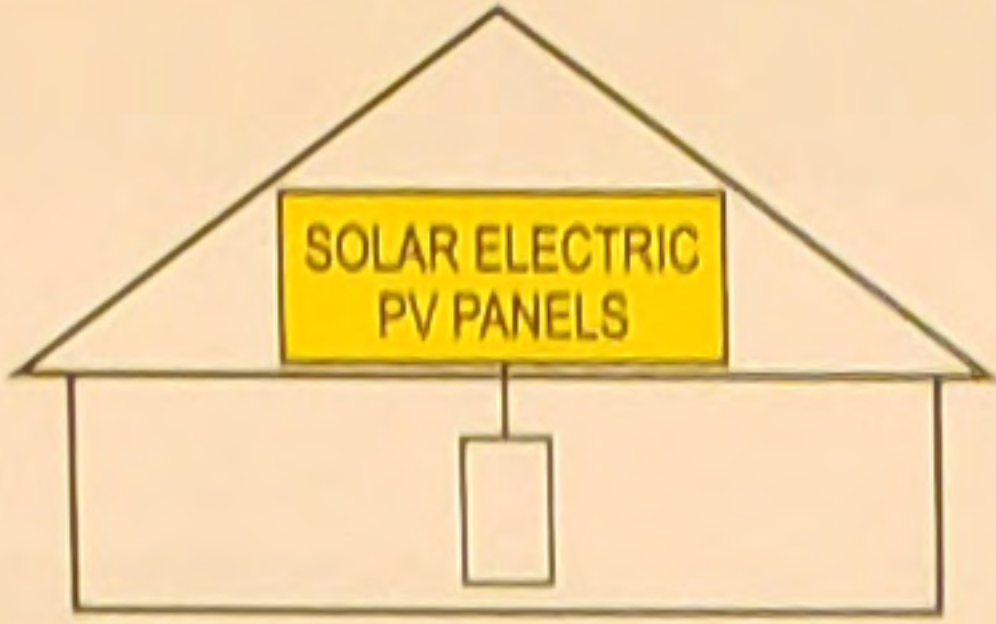
550 5 1
40 20
30 20

WARNING

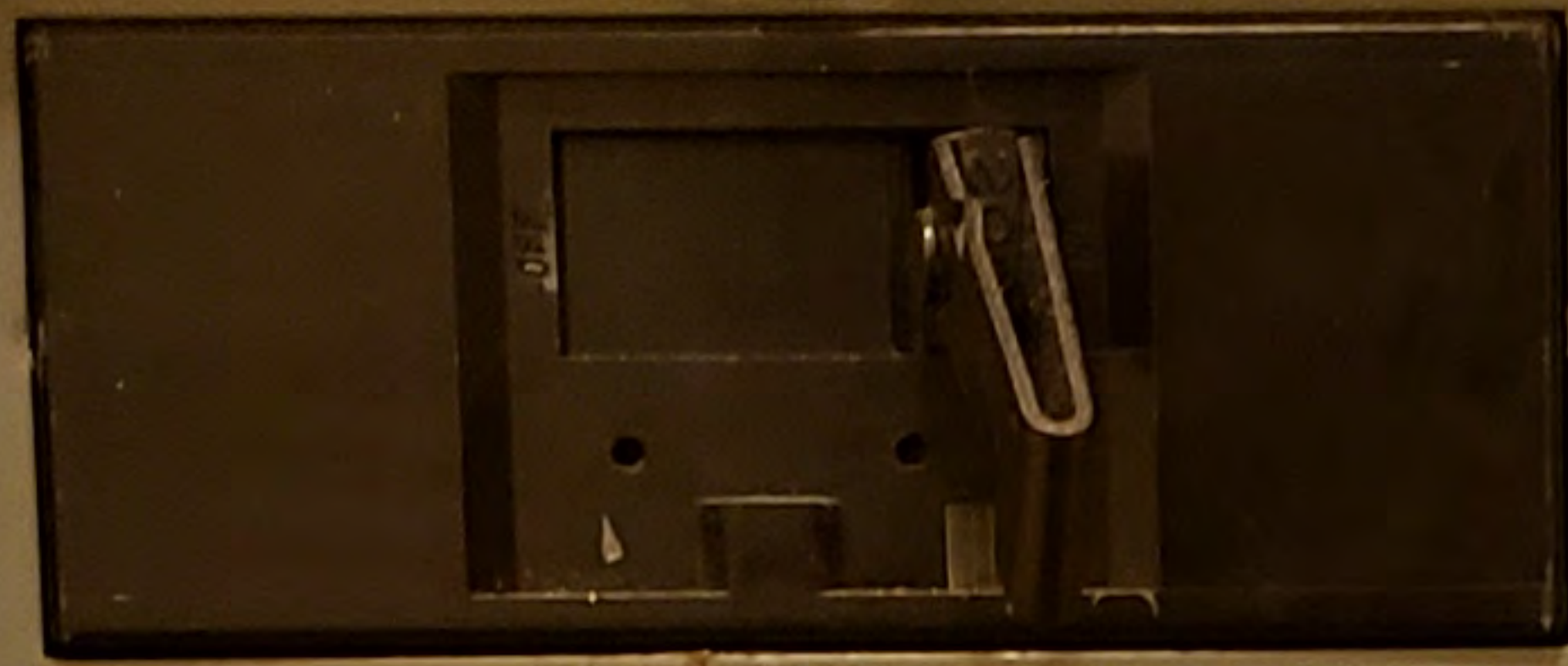
DUAL POWER SUPPLY

SOURCES: UTILITY GRID AND
PV SOLAR ELECTRIC SYSTEM

**SOLAR PV SYSTEM
EQUIPPED WITH
RAPID SHUTDOWN**



TURN RAPID SHUTDOWN SWITCH TO
THE "OFF" POSITION TO SHUT DOWN
PV SYSTEM AND REDUCE
SHOCK HAZARD IN THE ARRAY



DONT USE

DRYER

WATER HEATER

HEAT/AC

00 LOAD CENTER COVER
CAT. NO. Q0C300
SERIES G1

SQUARE D COMPANY
MADE IN U.S.A.

TYPE 1 ENCLOSURE
UNDERWRITERS
LABORATORIES
LISTED NO. 111414

TO DISCONNECT ALL LOAD CON-
NECTIONS, TURN OFF CIRCUIT CON-
TROLS. TURN OFF CIRCUIT CON-
TROLS TO "OFF" POSITION. DO NOT
ON "SERVICE DISCONNECT".

CAUTION: REMOVE TRIMMETS
ONLY WHEN CIRCUITS INSTALLED.
SPECIALIZED CIRCUIT BREAKER
UNDER THE PANEL PLATES
DO NOT REMOVE PANEL PLATES
OR SERVICE DISCONNECTS.

MAINS RATING: _____ AMPS
ELECTRICAL
INSPECTION BY: _____

1	(Range)	Bath Room	2
3	(Range)	M. Bed Room	4
5	(Range)	Lights (Kitchen Dinning room Living room)	6
7	(Range)	Bed Room	8
9	water heater	Smoke St	10
11	Heat	Dish washer	12
13	Heat +	OUTSIDE PLUGS Living Room	14
15	air cond	Ref.	16
17	Dinning room	Katiler	18
19	Back Bed Room	Freezer	20
21	Ligh pole outside	Washer	22
23	NEWS PAPER	Sun Room	24
25			26
27			28
29		SOLAR	30
		SOLAR	30

WARNING

POWER SOURCE
OUTPUT CONNECTION
DO NOT RELOCATE THIS
OVERCURRENT DEVICE



28
27
26
25
24
23
22
21
20
19
18
17
16
15
14
13
12
11
10
9
8
7
6
5
4
3
2



22
21
20
19
18
17
16
15
14
13
12
11
10
9
8
7
6
5
4
3
2

PR APPD
PTA-PT-450

3/4" x 1/2" x 1/4"

3/4" x 1/2" x 1/4"



2 3 4 5 6 7 8 9 10 11 12 13 14 15 16 17 18 19 20 21

1" CENTER SCHEDULE 40 GALV. PIPE CONFORMS TO U.S. STD. 40.1. MANUFACTURED BY...



solar **EDGE** HD

PHOTOVOLTAIC SYSTEM
EQUIPPED WITH
RAPID SHUTDOWN
WARNING

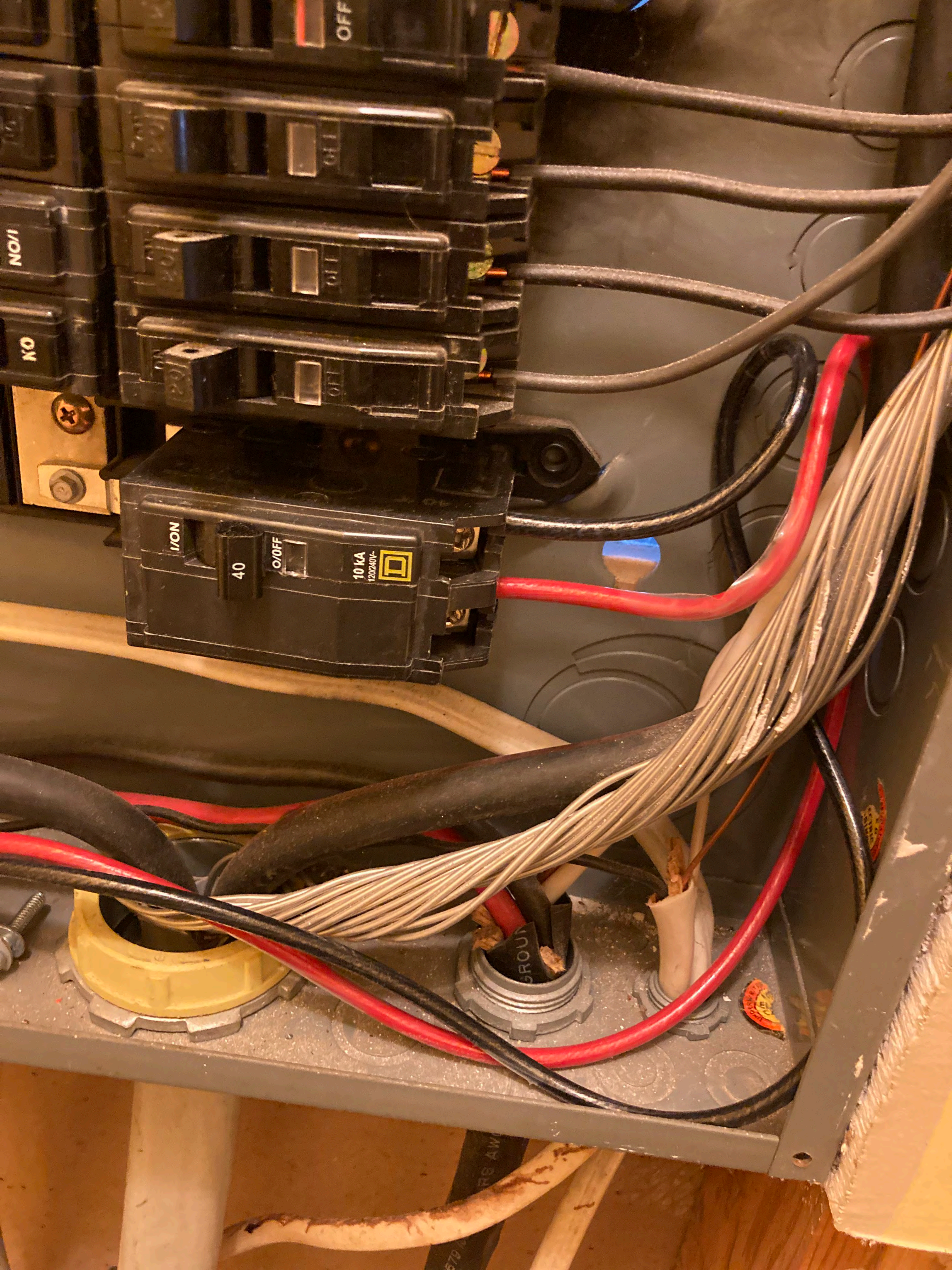
E-T-N
SOLAR PV SYSTEM
EQUIPPED WITH
RAPID SHUTDOWN
PHOTOVOLTAIC SYSTEM
EQUIPPED WITH
RAPID SHUTDOWN
WARNING

CAUTION SOLAR CIRCUIT

WARNING

WARNING

WARNING



OFF

OFF

OFF

OFF

ON

40

OFF

10 kA
120/240V

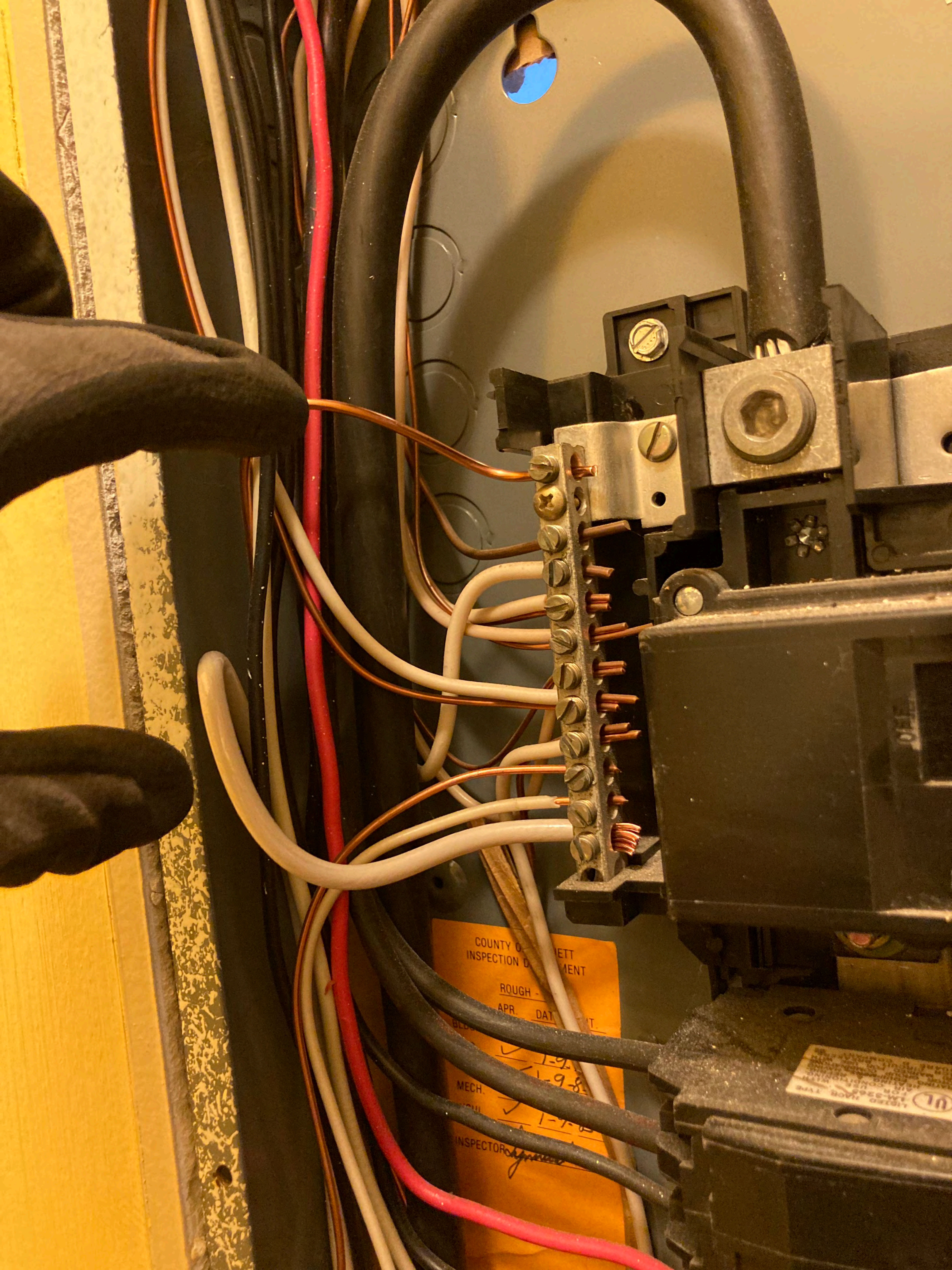


NO/1

NO

GROUND





COUNTY OF SHERBURN
INSPECTION DEPARTMENT
ROUGH -
APR. DATE
MECH.
INSPECTOR *[Signature]*

UL
LISTED
NEMA 1-300
TYPE

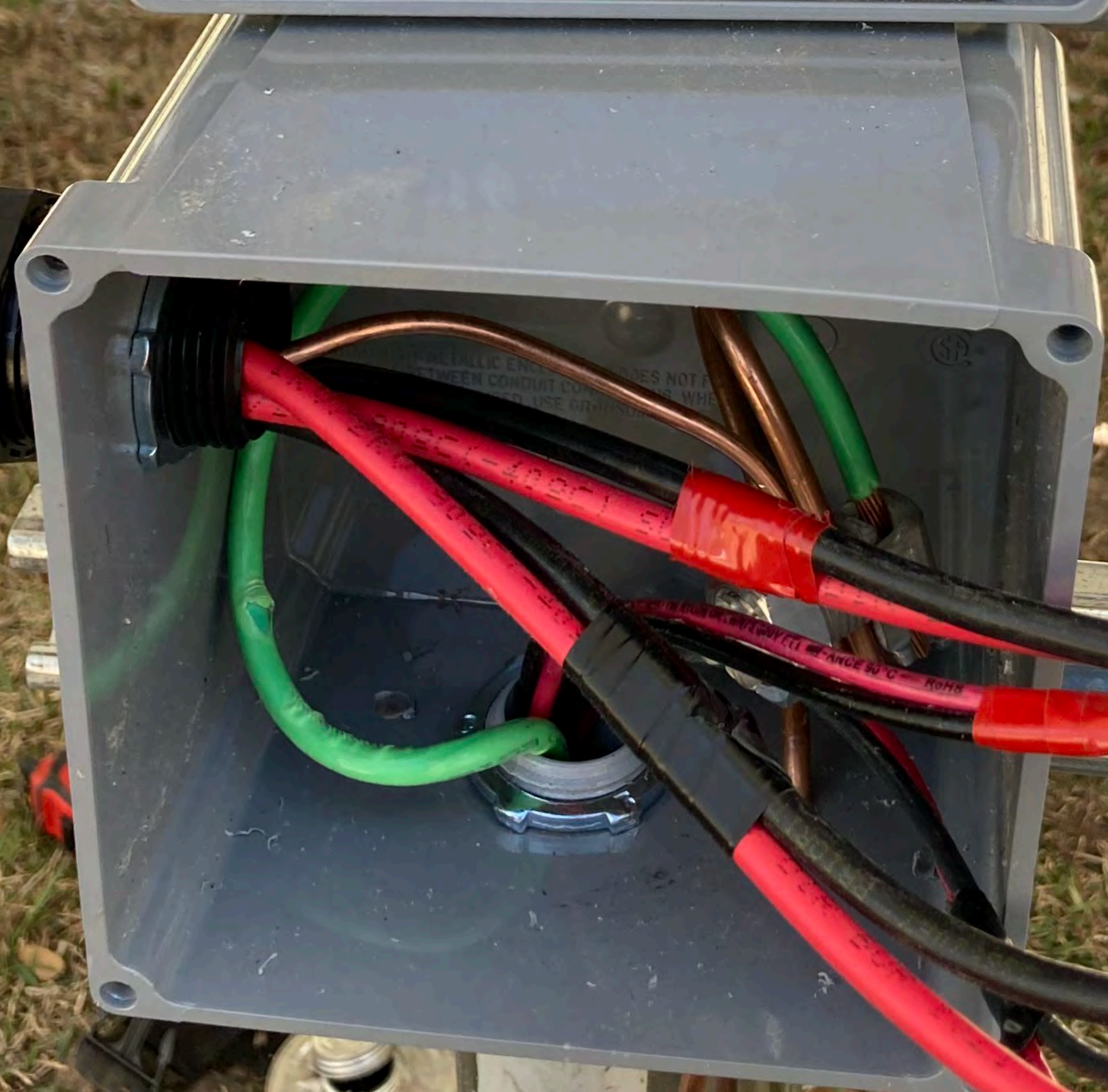
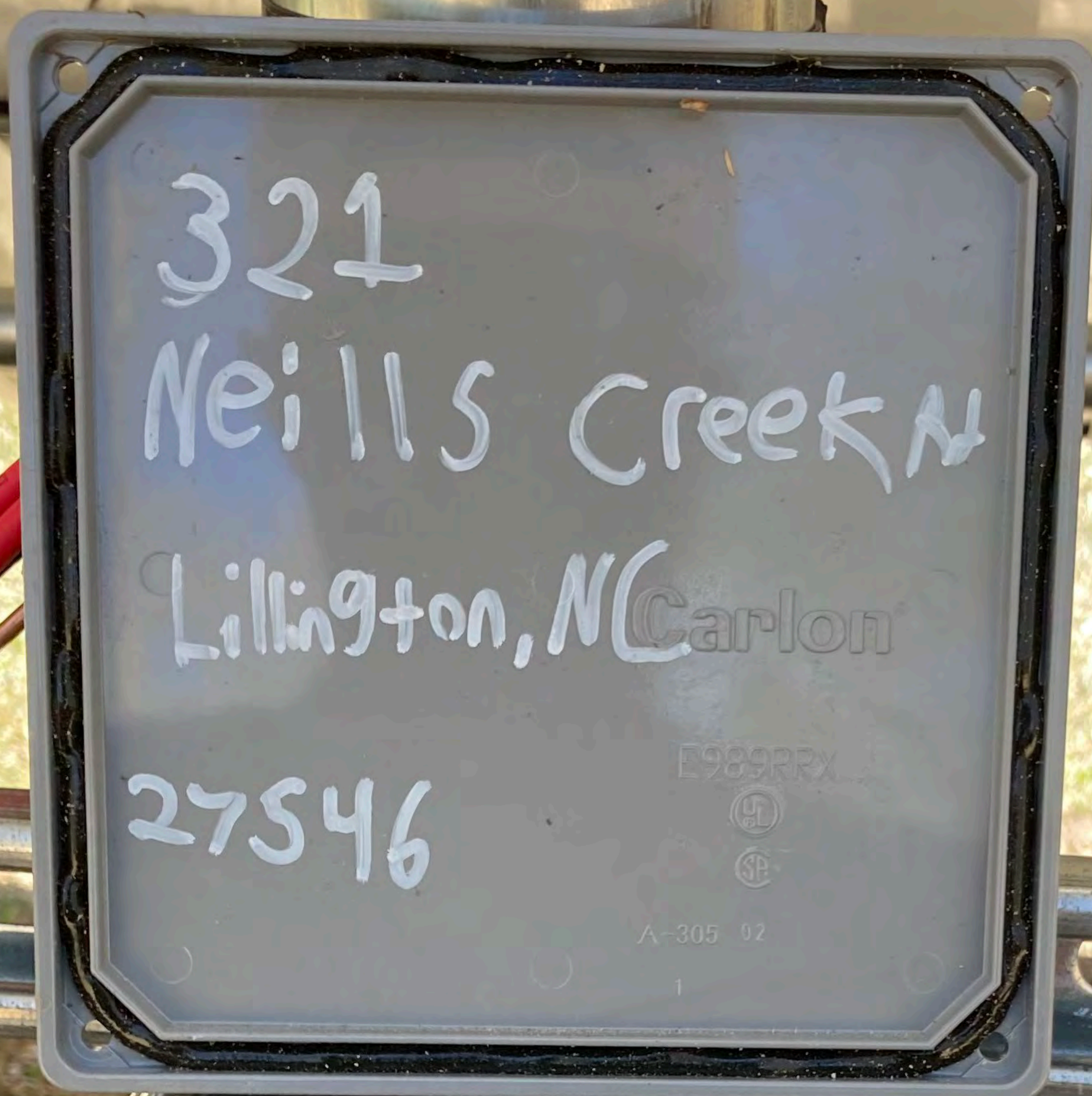


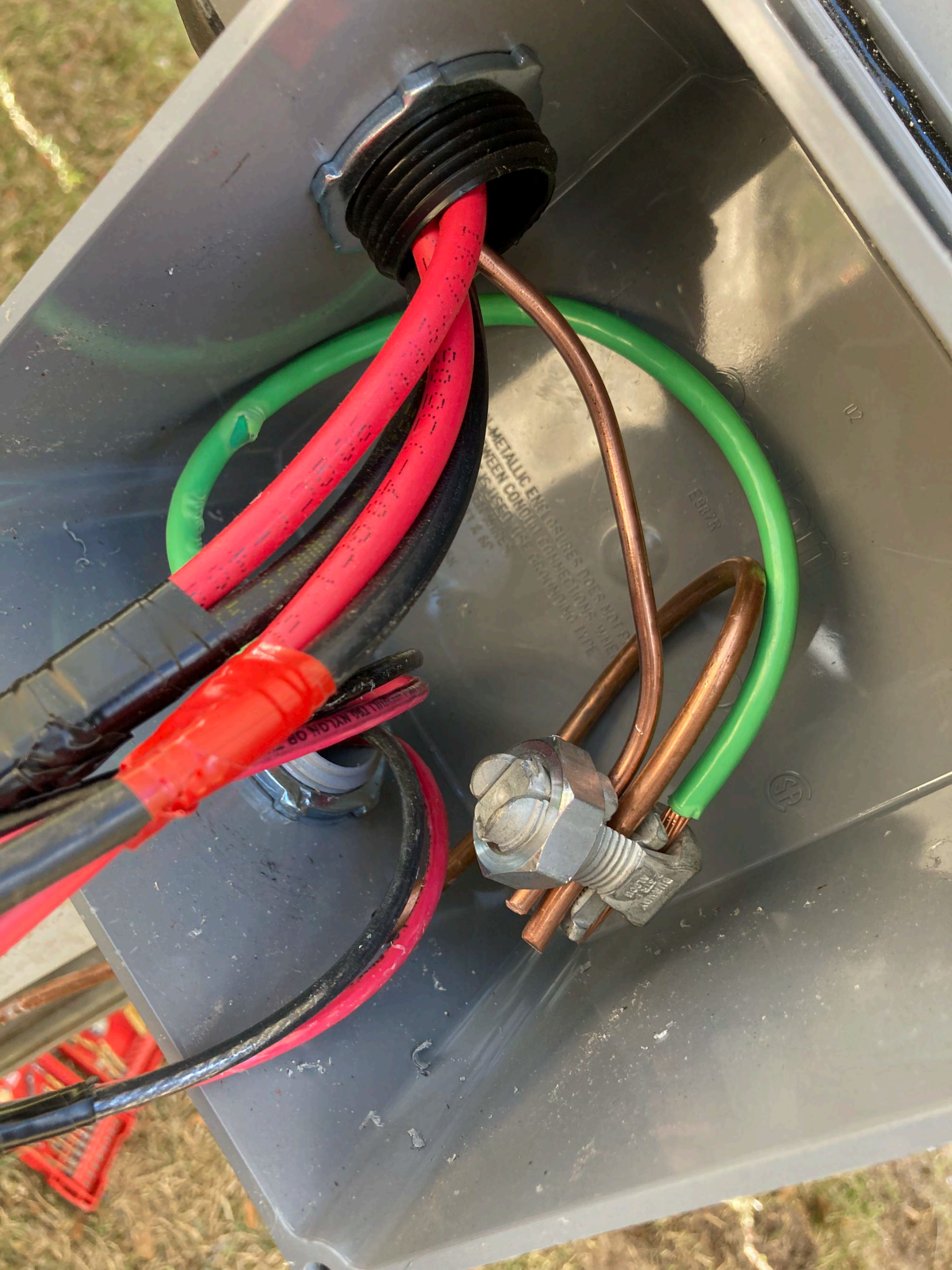


321
Neills Creek Rd
Lillington, NC
27546

E989RPX
UL
SE
A-305 92

10-03 A5(BA)12





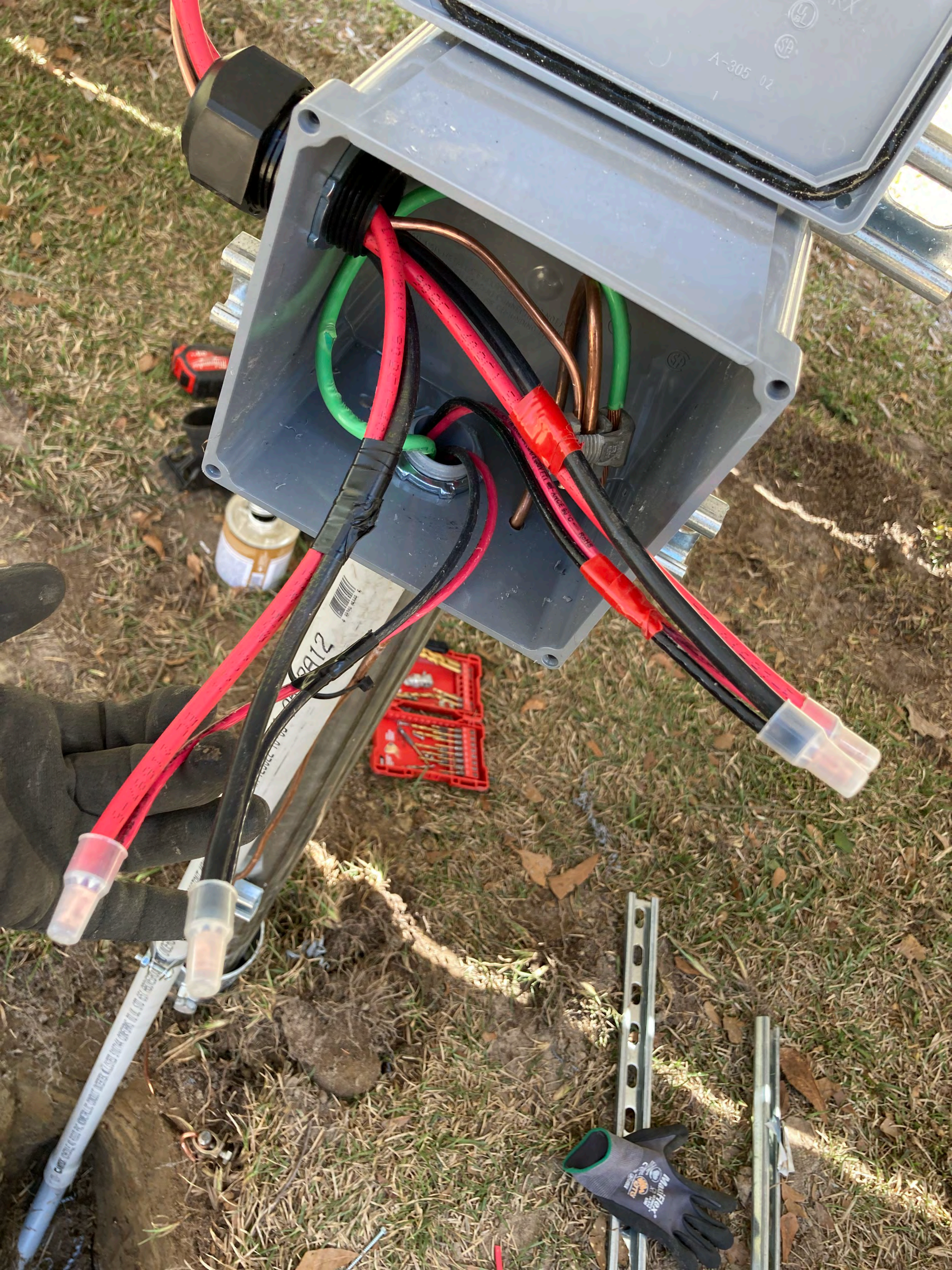
METALLIC ENCLOSURES DOES NOT PROTECT AGAINST WEATHER CONDITIONS
NEVER USED FOR GROUNDING TYPE

E007R

02



NEVER USED FOR GROUNDING TYPE

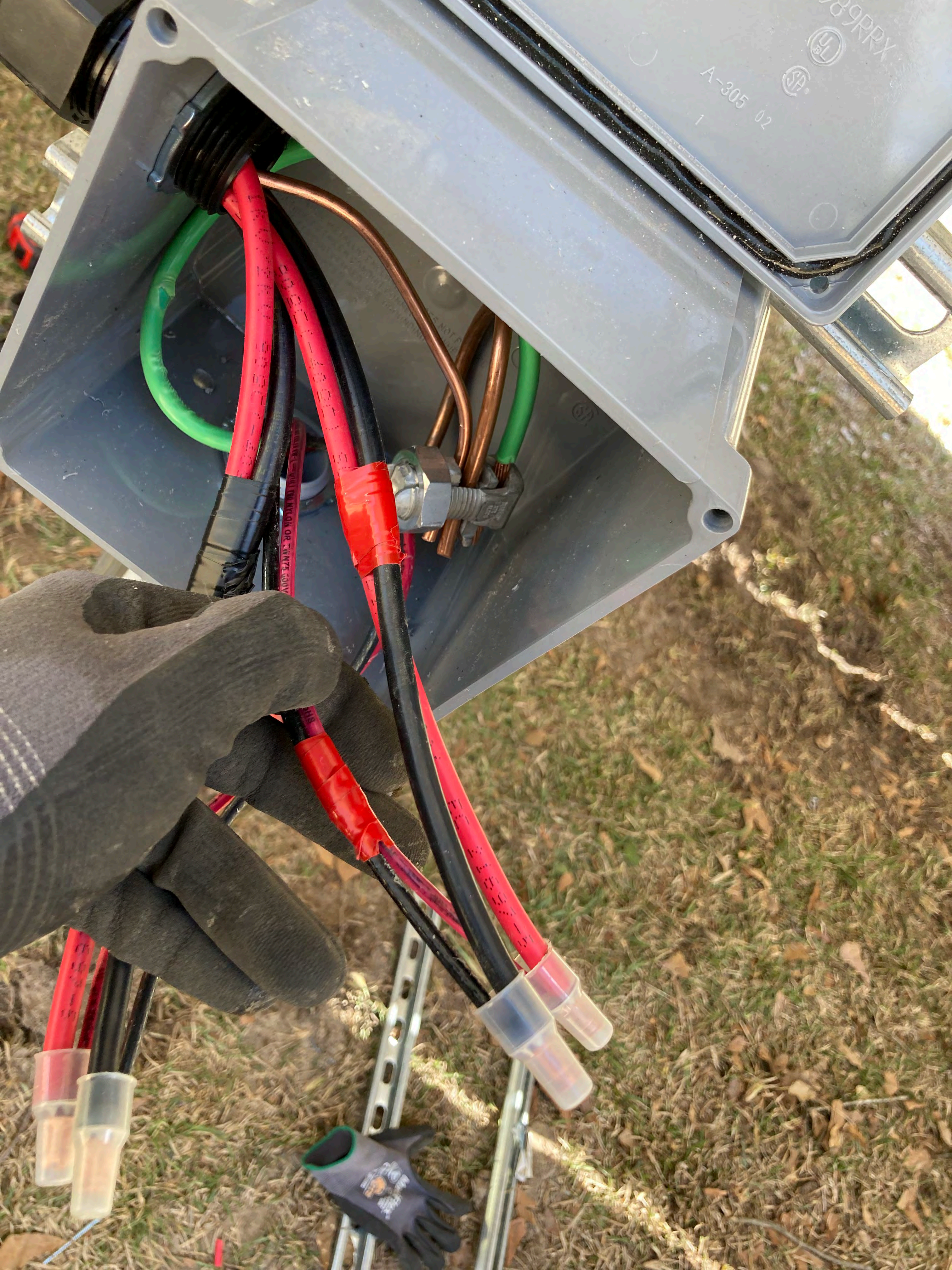


A-305 02

1

218

MaxiFlex
GLOVES



A-305 02

UL

99RX

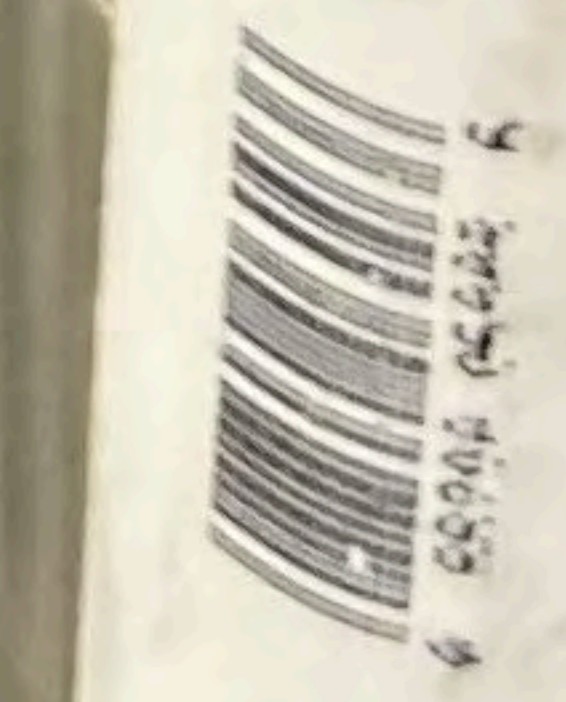
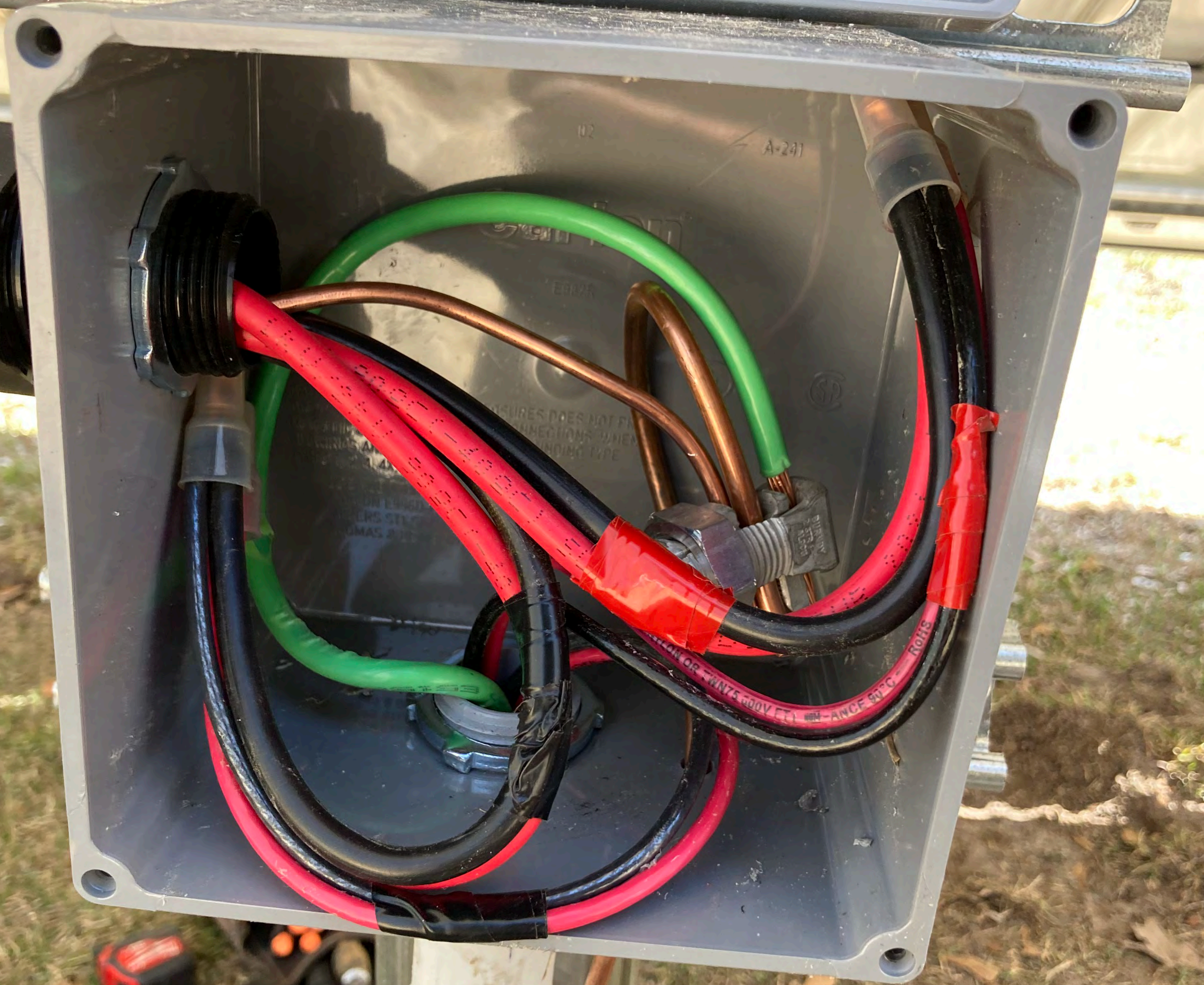
NEVER USE MULTIPLE NYLON OR TWIST 300V



27396

A-305 02

A-241



51BA12



CAUTION SOLAR CIRCUIT

A54BA12

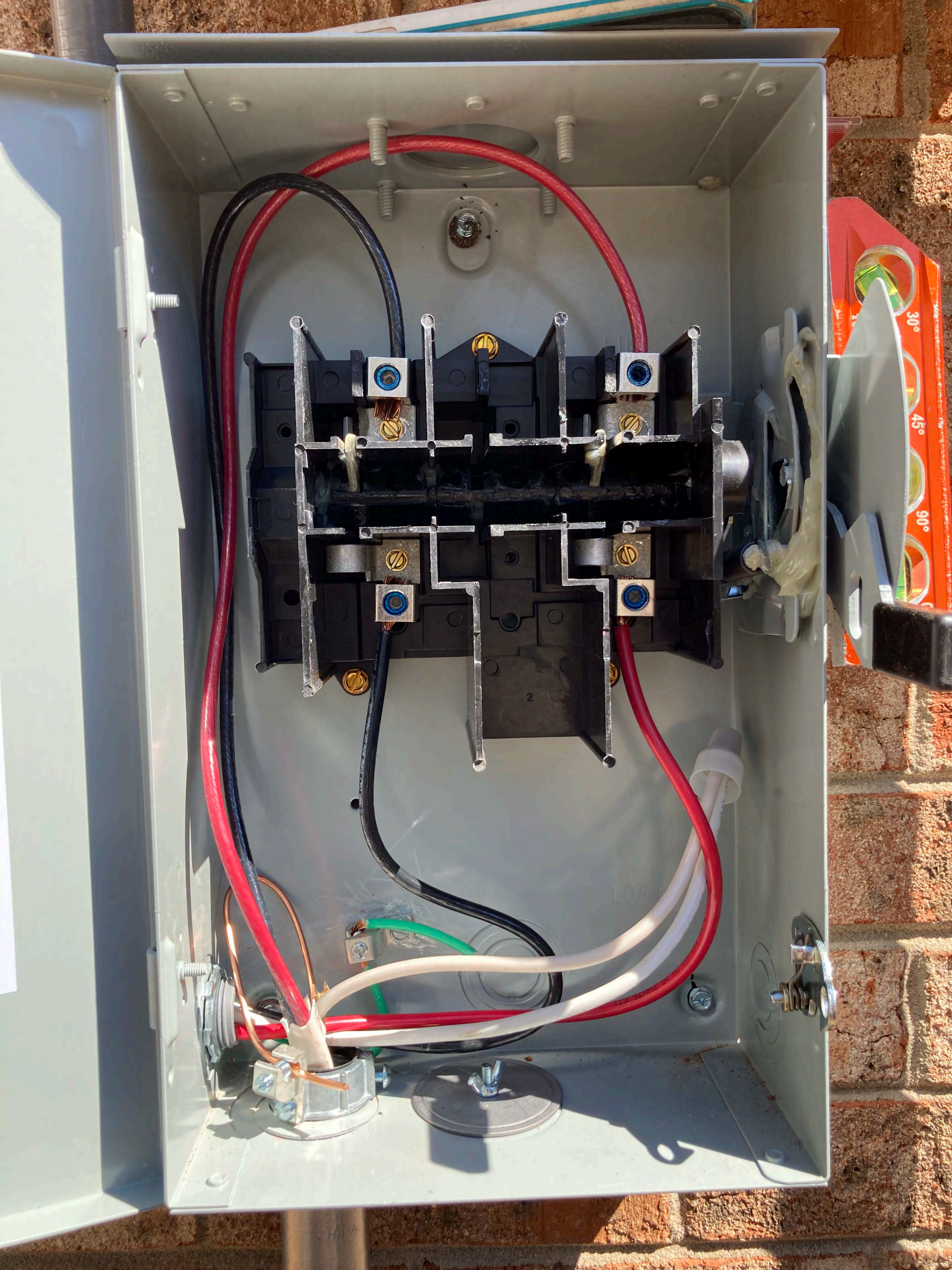
10:03 123022 V74R TC-2

CAUTION SOLAR CIRCUIT

CONFORMS TO UL STD 651 REQUIREMENTS UNDERGROUND

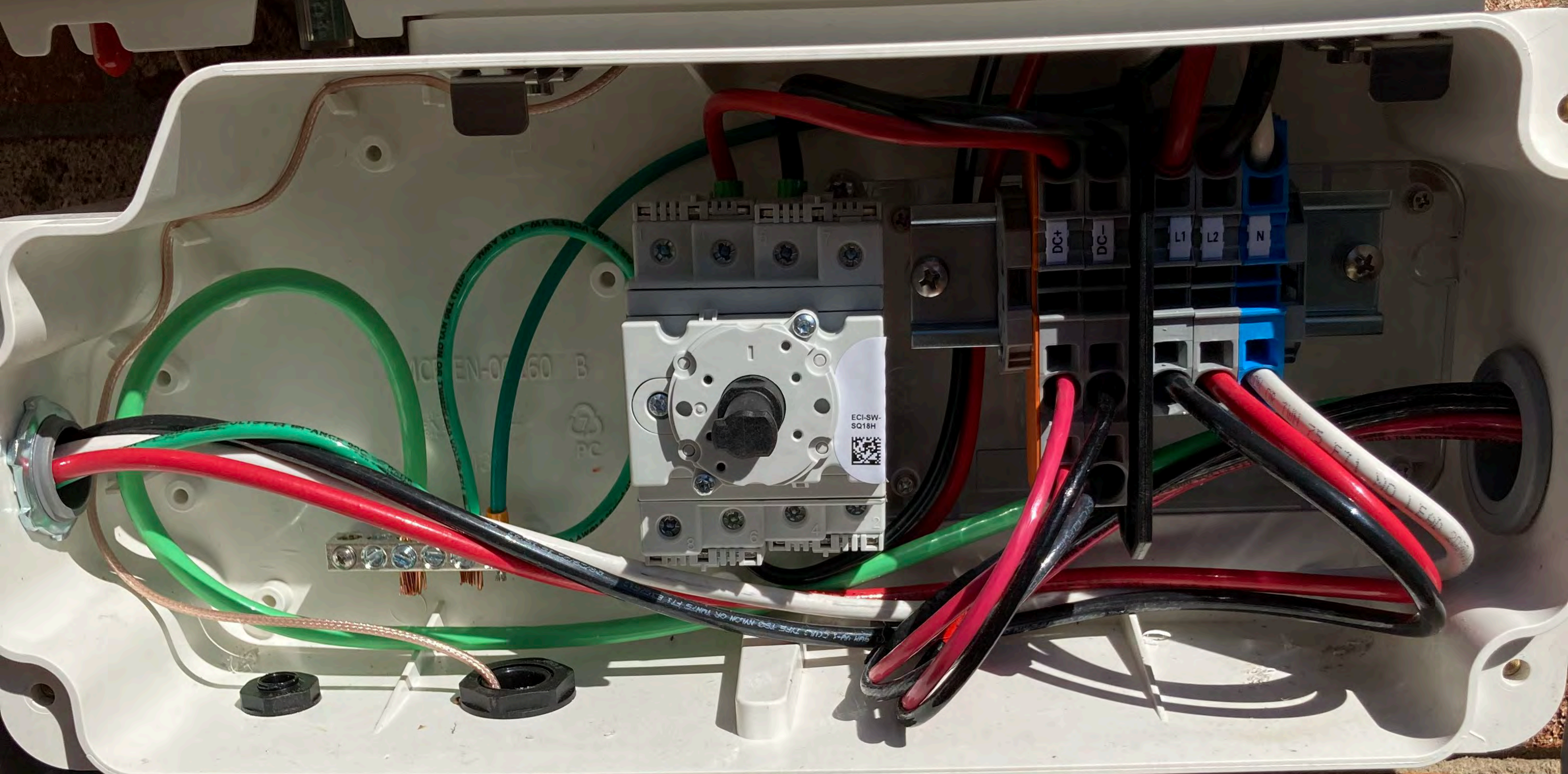






solar edge

HD wave



EATON

General Duty Safety Switch
Interrupteur de sécurité à usage général
Interruptor de seguridad de servicio general

60 A, 240 V~, 60 Hz

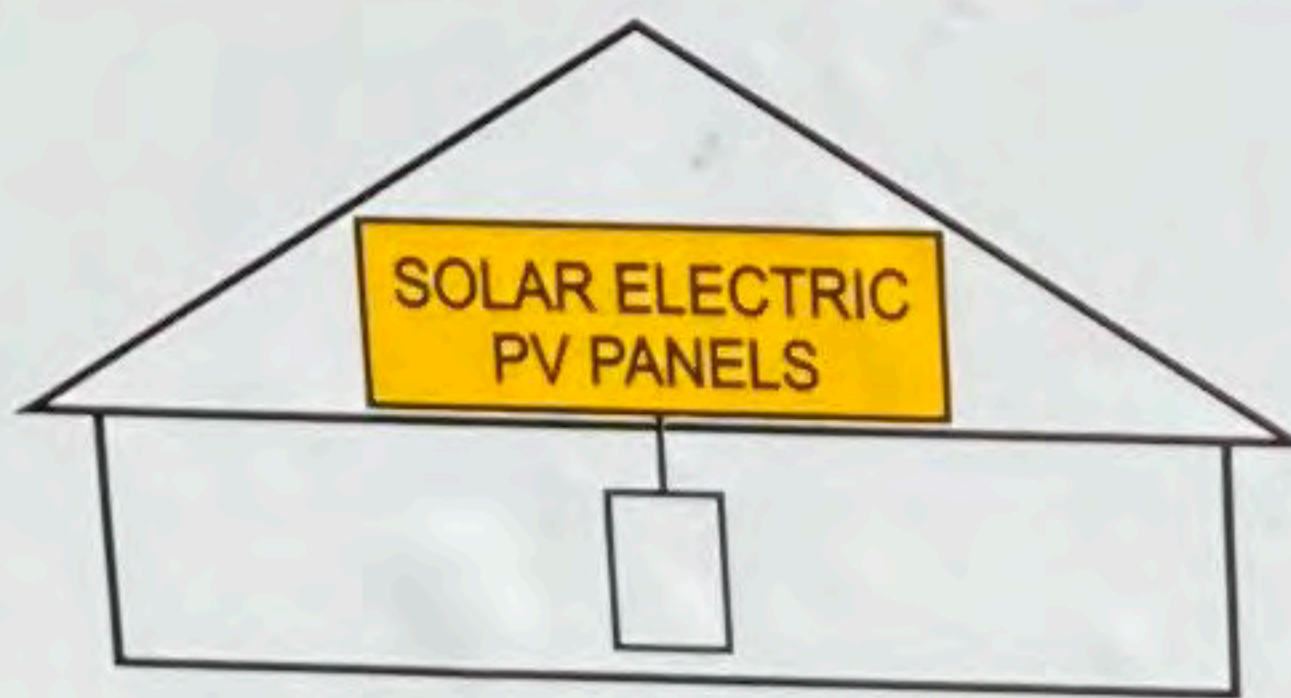
Complete ratings inside
Valeurs nominales complètes à l'intérieur
Información completa de capacidades en el interior

Further instructions inside
Autres instructions à l'intérieur
Instrucciones adicionales en el interior

Made in U.S.A. / Fabriqué aux É.-U. / Hecho en E.U.A.



**SOLAR PV SYSTEM
EQUIPPED WITH
RAPID SHUTDOWN**



TURN RAPID SHUTDOWN SWITCH TO THE "OFF" POSITION TO SHUT DOWN PV SYSTEM AND REDUCE SHOCK HAZARD IN THE ARRAY

**PHOTOVOLTAIC SYSTEM
AC DISCONNECT**

RATED AC OUTPUT CURRENT **32 A**
NOMINAL OPERATING AC VOLTAGE **240 V**

⚠ WARNING

ELECTRIC SHOCK HAZARD
TERMINALS ON THE LINE AND LOAD SIDES MAY BE ENERGIZED IN THE OPEN POSITION

EATON[®]

General Duty Safety Switch
Interrupteur de sécurité à usage général
Interruptor de seguridad de servicio general

60 A, 240 V~, 60 Hz

Complete ratings inside
Valeurs nominales complètes à l'intérieur
Información completa de capacidades en el interior

Further instructions inside
Autres instructions à l'intérieur
Instrucciones adicionales en el interior

Made in U.S.A. / Fabriqué aux É.-U. / Hecho en E.U.A.

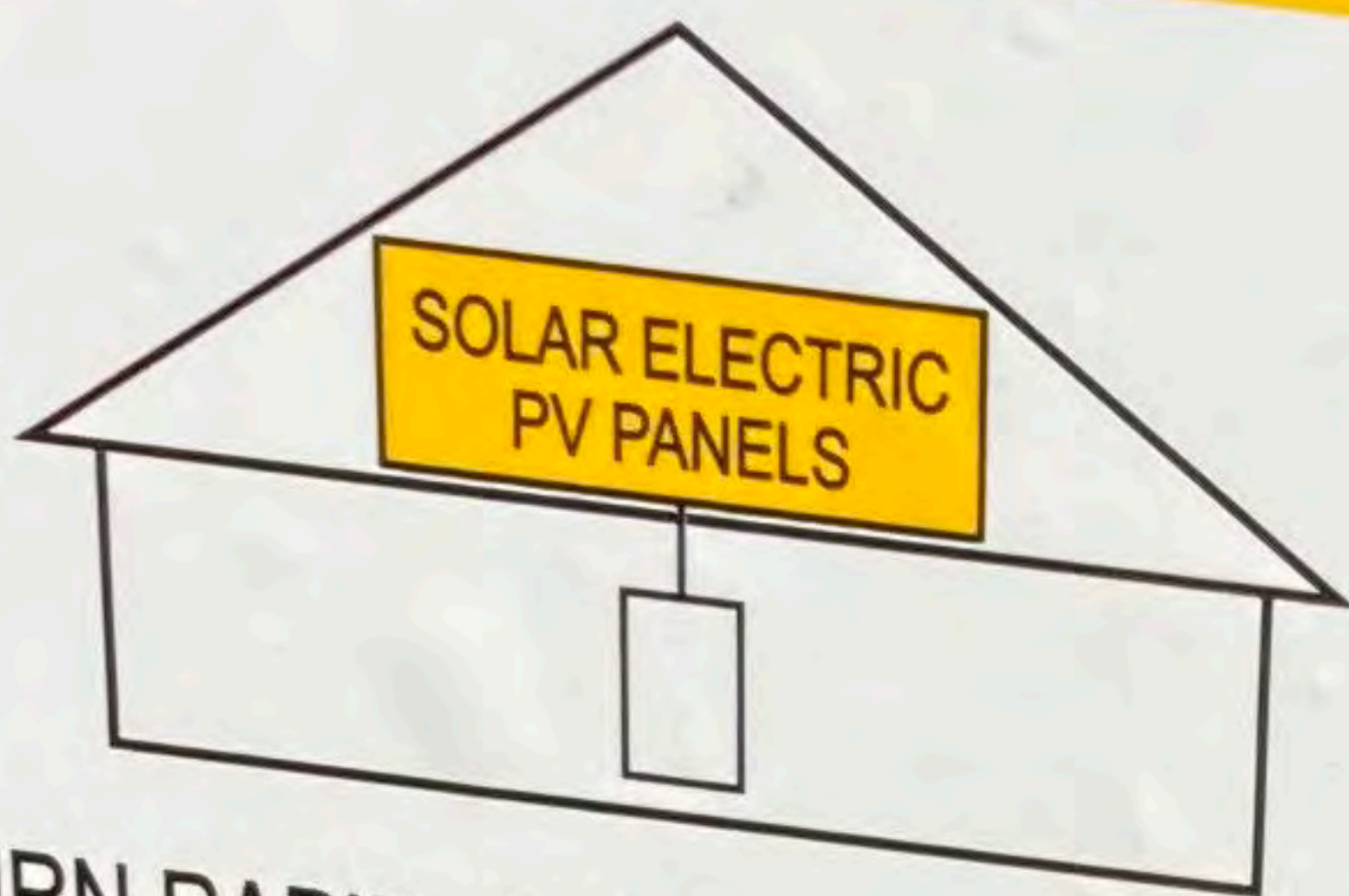


⚠ DANGER
HAZARDOUS VOLTAGE. WILL CAUSE SEVERE INJURY OR DEATH.
• Never operate switch with cover open.
• Turn OFF power ahead of switch before doing any work inside. Replace all parts. Close cover before turning power ON.
TENSION DANGEREUSE. PEUT CAUSER DES BLESSURES GRAVES OU LA MORT.
• Ne jamais manœuvrer l'interrupteur lorsque le couvercle est ouvert.
• Couper l'alimentation en amont de l'interrupteur avant toute intervention. Remplacer les pièces. Fermer le couvercle avant de remettre sous tension.
⚠ PELIGRO
VOLTAJE PELIGROSO. PUEDE CAUSAR HERIDAS SEVERAS O LA MUERTE.
• Nunca opere el interruptor con la cubierta abierta. Desconectar la alimentación del interruptor antes de trabajar dentro del mismo. Reemplazar todas las partes. Cerrar la cubierta antes de energizar el interruptor.

30-43080



SOLAR PV SYSTEM EQUIPPED WITH RAPID SHUTDOWN



TURN RAPID SHUTDOWN SWITCH TO THE "OFF" POSITION TO SHUT DOWN PV SYSTEM AND REDUCE SHOCK HAZARD IN THE ARRAY

⚠ PHOTOVOLTAIC SYSTEM AC DISCONNECT ⚠

RATED AC OUTPUT CURRENT **32** A
NOMINAL OPERATING AC VOLTAGE **240** V

⚠ WARNING
ELECTRIC SHOCK HAZARD
TERMINALS ON THE LINE AND LOAD SIDES MAY BE ENERGIZED IN THE OPEN POSITION

⚠ WARNING

DUAL POWER SUPPLY

**SOURCES: UTILITY GRID AND
PV SOLAR ELECTRIC SYSTEM**

phoenix.com

06-211

CENTRON

CONTAINS:
FCC ID: N7NHL7518 MODEL: HL7518
MODEL: 574052

0001FC8593

FCC ID: SK91TR24 IC: 864G-1TR24 MODEL: 1TR24

000000000000
240 277 460

CL200 240V 3W TYPE C2C 30TA 1.0Kh

ZZZ BA8020 H70

DUKE ENERGY PROGRESS

325 195 496

F120538

OpenWay[®]
tron

3/19

CA 0.5
FM2S
60HZ

UNDERGROUND
CONFORMS TO UL STD 651 ABOVEGROUND
EMERGENCY RIGID PVC NONMETALLIC CONDUIT INTERTEK LISTED 3107144











IRONRIDGE

Make Solar **Stronger**®

UFO-CL-01-B1 Rev C



UNIVERSAL MODULE
CLAMP, BLACK

Unit Qty = 200

3122-0301W

US Patent # US 10,186,791
Australian Patent # AU2016294152



IRONRIDGE

Make Solar **Stronger.**



GM-BRC-003 RevC

Ground Mount Bonded

Rail Connector – 3"

QTY = 36

CA089 M726540 3922.0301K

⚠WARNING: This product may contain chemicals that are known to the State of California to cause cancer, birth defects, or other reproductive harm. For more information go to www.P65Warnings.ca.gov



STOP!

Do not disconnect under load











CHINA

MAX. SIZE COND. 3 # 4 AWG

USE WITH APPROVED CONDUIT



GR

		REC N-Peak 2 Black Series REC365NP2 Black Serial Number: FBB-2009806709		Phone: +65 6486 6228 www.recgroup.com	
Power Output (Pmax)	365 W		- Conforms to UL Std. 61730-1-2		
Watt Class Sorting	0/+5 W		- Certified to CSA Std. C22.2 61730-1-2		
Power Production Tolerance	+/- 3 %		- UL Fire Rating Type 2*		
Rated Voltage (Vmpp)	34.3 V				
Rated Current (Impp)	10.65 A		- IEC 61215		
Open Circuit Voltage (Voc) (+/- 3%)	40.9 V		- IEC 61730		
Short Circuit Current (Isc) (+/- 3%)	11.36 A		Manufactured 25.09.2022		
Maximum System Voltage (Vsys)	1000 V				
Maximum Series Fuse (DC) (UL)	25 A				
Maximum Series Fuse (DC) (IEC)	25 A				
Design Load	+4666 / -2666 Pa*				
Maximum Test Load	+7000 / -4000 Pa*				
<small>(Values at STC: 1000 W/m² AM 1.5, cell temp 25°C)</small>					
<small>See installation manual for *) mechanical installation requirements and *) installation requirements to achieve a specified system fire class</small>					
<p>Warning: electrical hazard. This module produces electricity when exposed to light. CAUTION: DO NOT DISCONNECT UNDER LOAD</p> <p>Avertissement: Risque de choc électrique. Ce module solaire produit de l'électricité lorsqu'il est exposé à la lumière.</p> <p>ATTENTION: NE PAS DECONNECTER SOUS TENSION</p>					
<p>For field connections, use min. 4 mm² (12 AWG) UL PV wires insulated for a min. of 90°C Made in Singapore by REC SOLAR PTE LTD 20 TUAS SOUTH AVENUE 14, SINGAPORE 637212, SINGAPORE</p>					
<p>EU Europe Contact: REC Solar EMEA GmbH Bismarckstr. 71a, 81541 Munich, Germany, Tel: +49 (0)89-442-38590 For other regions see: www.recgroup.com/contact</p>					