





DVM154B2211031295

www.SOLARIA.com

PowerX-390R

Peak Power	(Pmax)	390 W
Power Range		-0 / +5 W
Voltage at Pmax	(Vmp)	30.42 V
Current at Pmax	(Imp)	12.82 A
Open Circuit Voltage	(Voc)	36.54 V
Short Circuit Current	(Isc)	13.50 A
Maximum Series Fuse		25 A

All ratings at standard test conditions: 1000 W/m², AM 1.5 spectrum, 25°C. Field connections; use min. 12 AWG copper wires insulated for 90°C min.



C US
504294
Model: PowerX-390R-3

Power Measurement Tolerance	±3%
Open Circuit Voltage Tolerance	±3%
Short Circuit Current Tolerance	±3%



WARNING
Caution
Risk of electric shock.
AVERTISSEMENT
Danger
Risques d'électrocution.

IEC Fire Rating Class C – UL Type 1
Application Class II

See Installation Manual for
Installation Requirements to
Achieve a Specified System Fire
Class Rating with this Product



Maximum Permissible System Voltage 1000V DC
PXT-LBL-0005-04
Made in Thailand







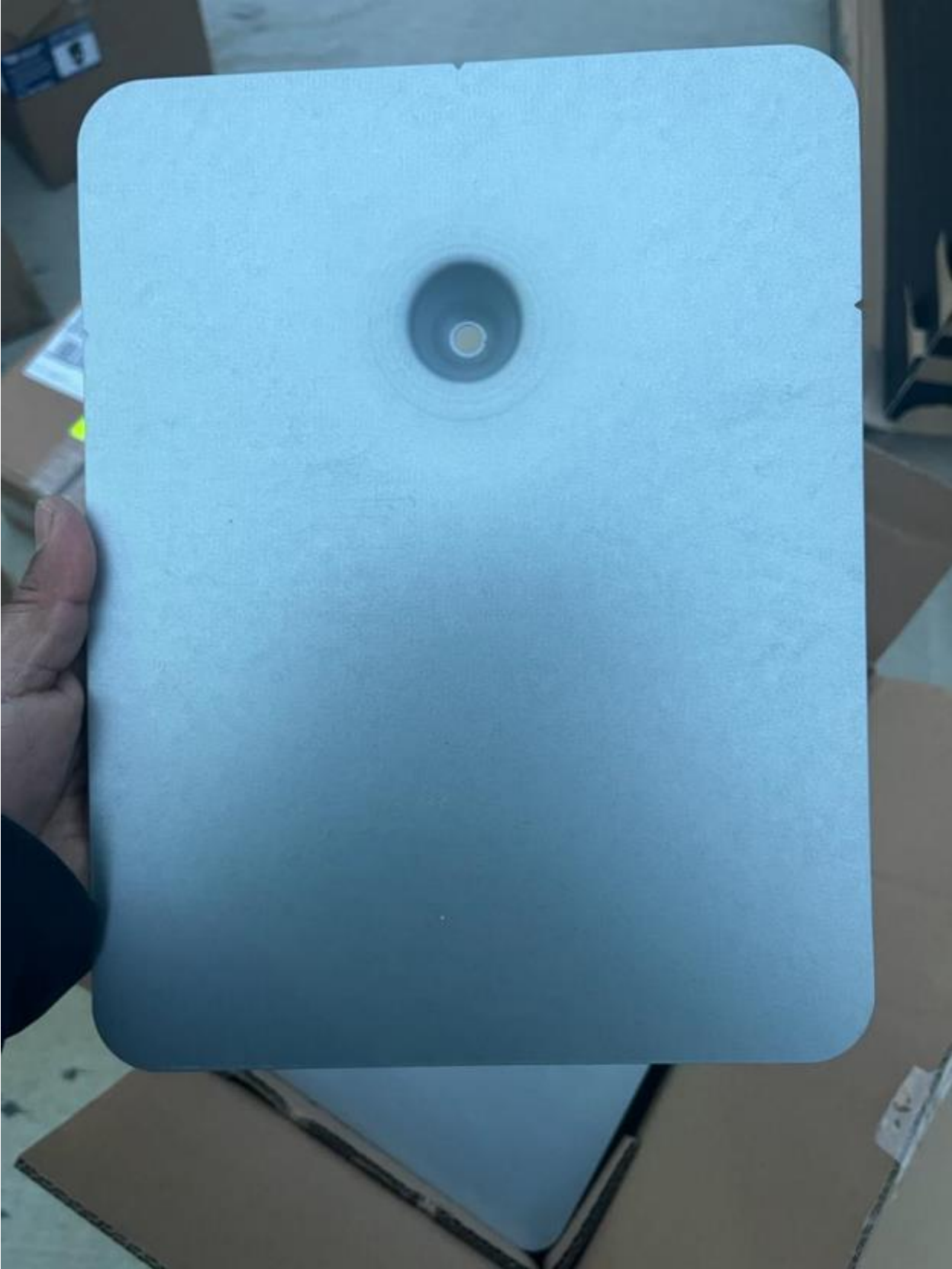
PEGASUS SOLAR

END PANEL →

SA

FRS 21-2

C US A





























482240103288 885-01331



IQ8PLUS-72-2-US

885-01331 12 7511

482240103288







840-00385-12
100VDC 20A
+79°C 2223

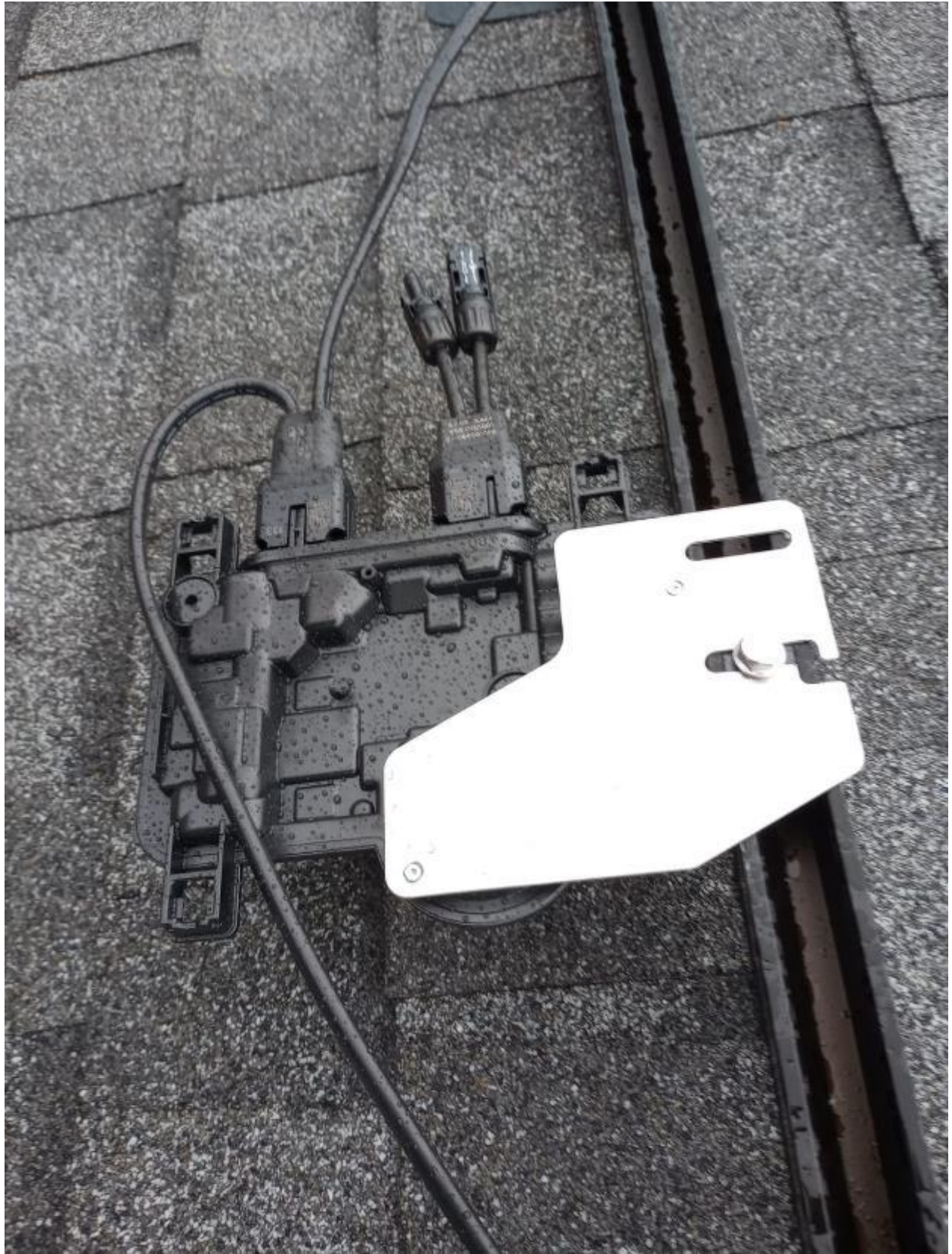
100V SUN RES -40

Do not disconnect
under load















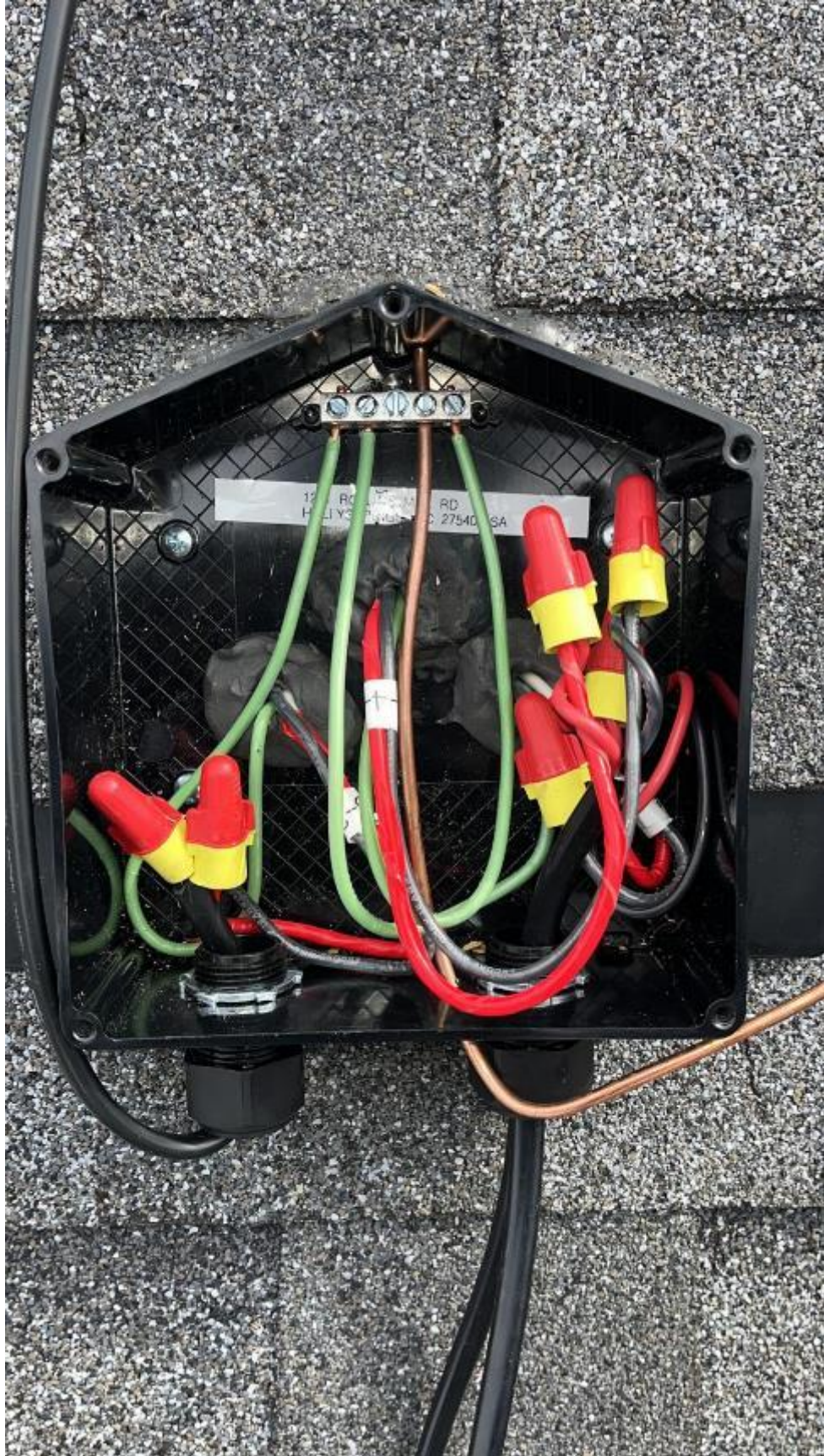


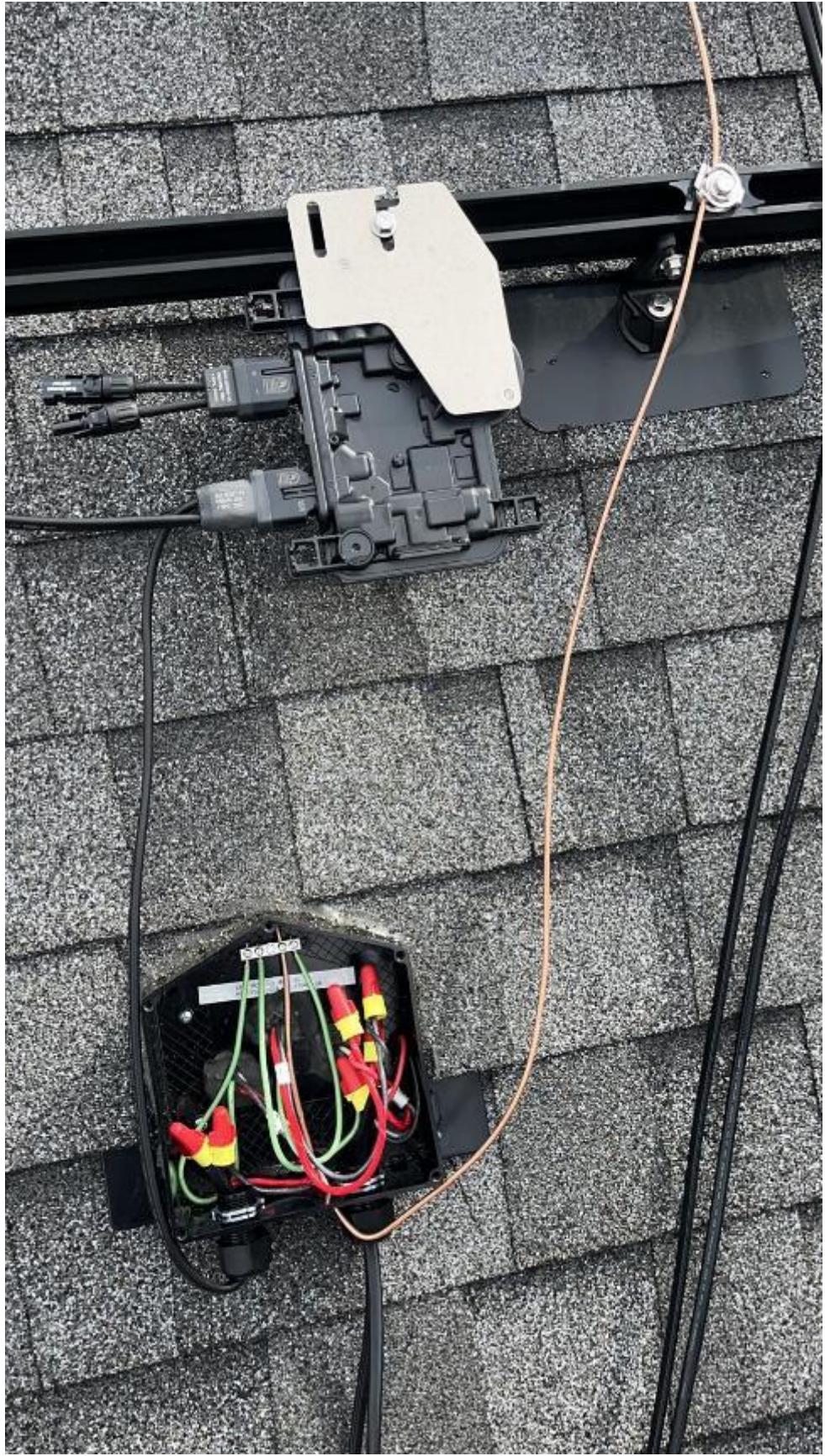
























EZ
SOLAR

3

JB-1.2

1261 ROLLINS MILL RD
HOLLYSPRINGS, NC 27540, USA









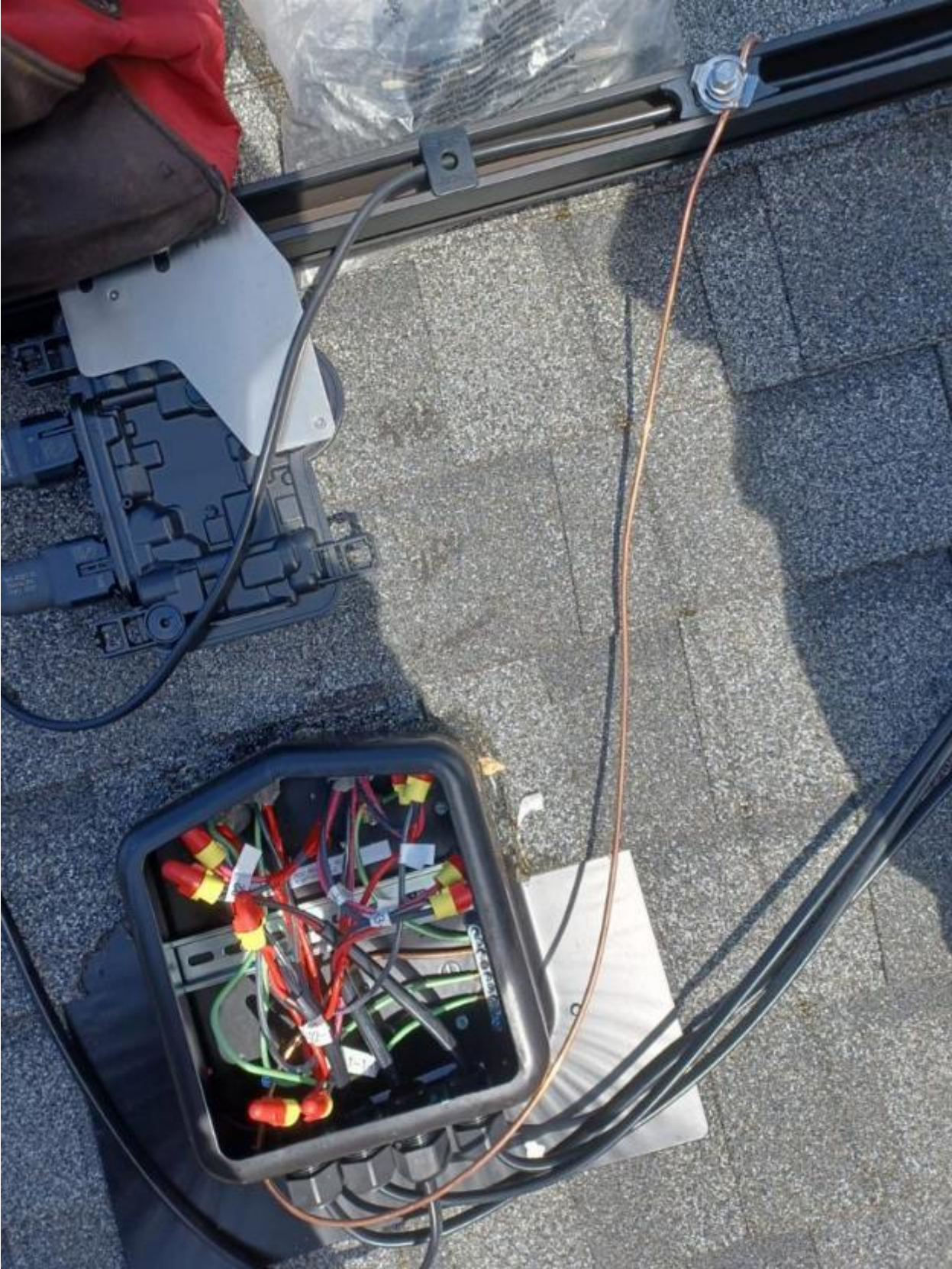


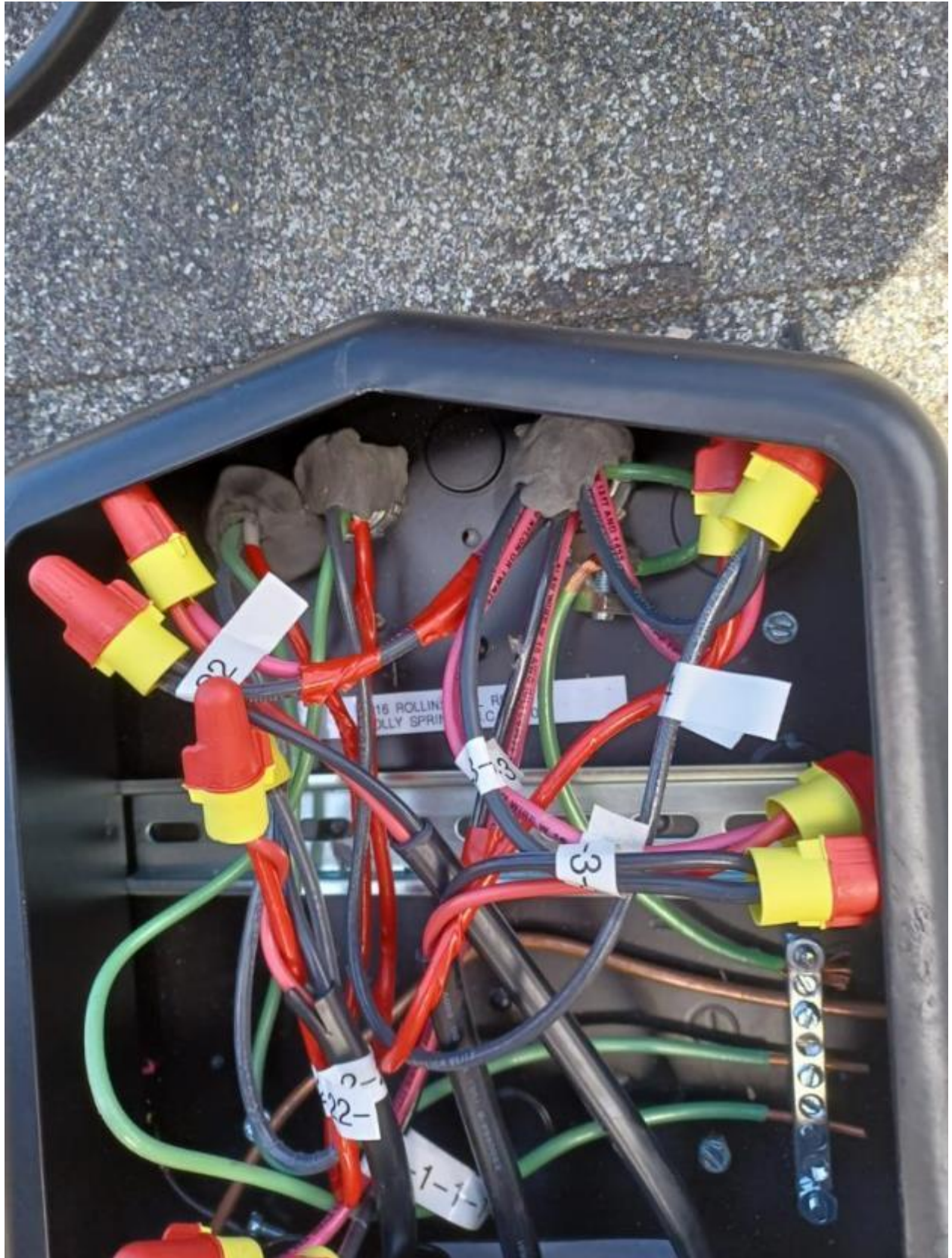






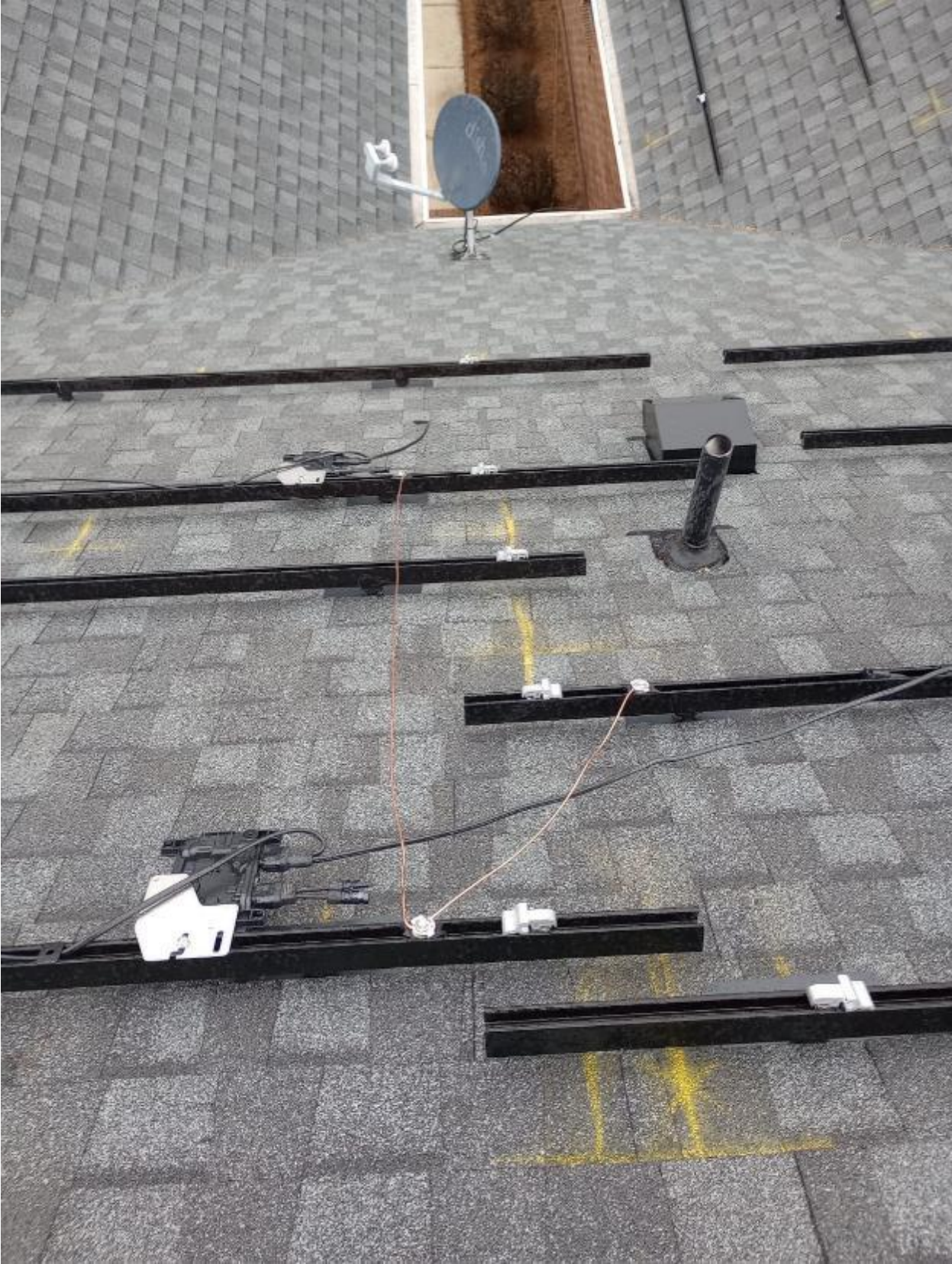




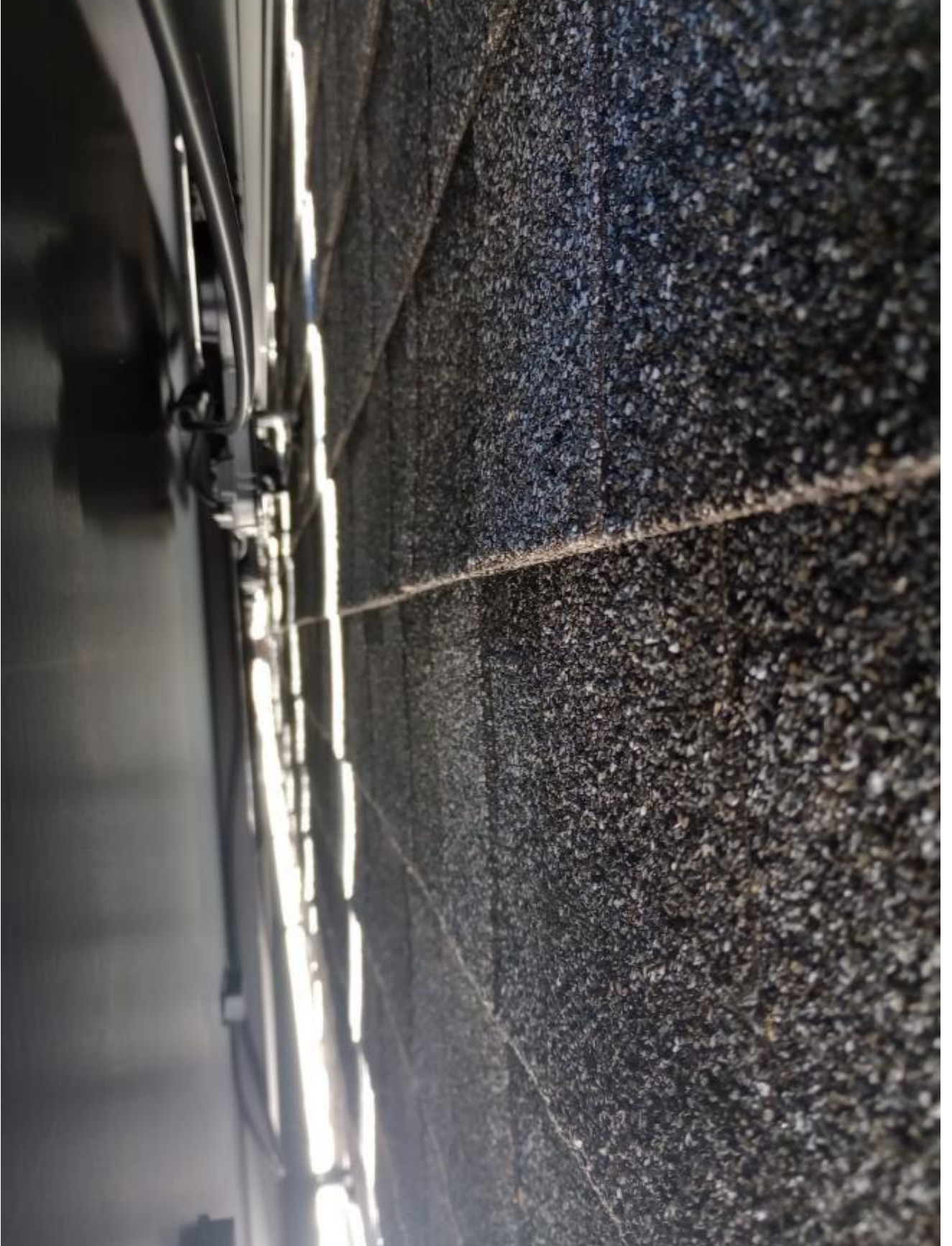


















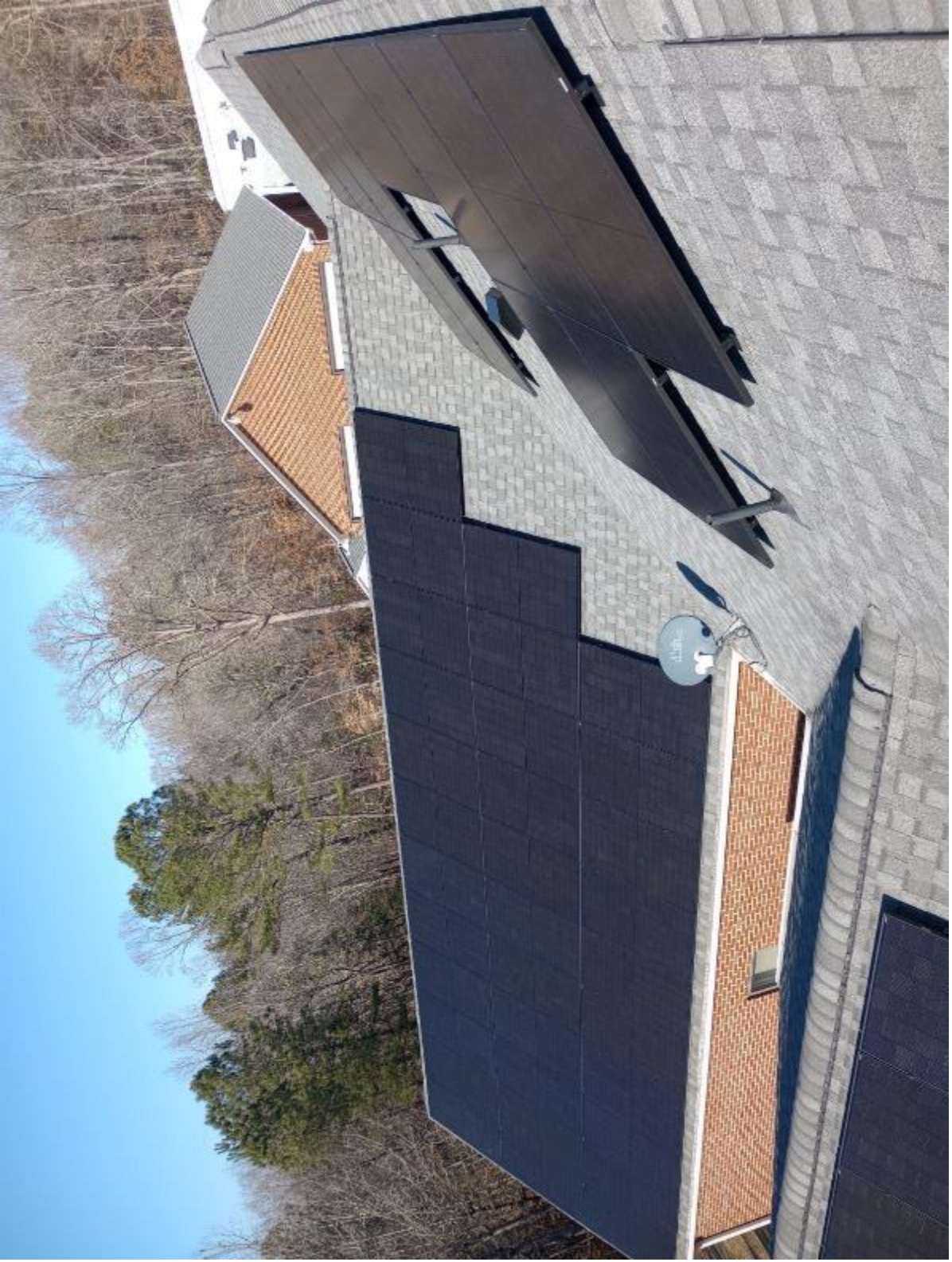
























MPPF01

ES00004 (UL) Type DG 600V THHN/THWN-2 90C dry/wet 2/C 12AWG -40C oil res. 1 anti-rat resistant FT4 Simpson Roh's

FT4 Simpson Roh's

