



MADE IN CHINA
253010U
UNIRAC
30MM SPlice 6.5" SFM



UNIRAC
BETTER SOLAR STARTS HERE

30MM SPlice 6.5" SFM
253010U





IQ Combiner 4

Photovoltaic

Combiner Box

X-IQ-AM1-240-4



Electrical ratings

Voltage 240VAC, 60Hz
DG Breakers 80A MAX (combined)
DG Inputs 64A MAX (combined)
Output 65A MAX, 90A MAX feeder OCPD
Temperature 46°C MAX ambient
For DG breaker, use only Eaton BR series.


202249076138

S/N: 
202249076138

P/N:


883-00356 23

Dedicated solar and DG Combiner Box - do not add loads
10 AMP or 15 AMP IQ Gateway Breaker not used for backfeed

Connection	Wire sizes	Torque
DG Breaker (1, 2, 3, 4)	14-10 AWG	2.2 Nm (20 lb-in)
	8 AWG	2.8 Nm (25 lb-in)
60A Circuit Breaker only	6-4 AWG	3.0 Nm (27 lb-in)
	4-1/0 AWG	5.0 Nm (45 lb-in)
IQ Gateway Breaker	14-10 AWG	2.26 Nm (20 lb-in)
Neutral and ground	Large screw	5.6 Nm (45 lb-in)
	Small screw	5.1 Nm (45 lb-in)
Main lug	6 AWG	3.6 Nm (32 lb-in)
	8 AWG	2.6 Nm (23 lb-in)
	10-14 AWG	2.3 Nm (20 lb-in)
	10-4 AWG	5.0 Nm (45 lb-in)
	3-2/0 AWG	5.6 Nm (50 lb-in)

Copper conductors only, rated min. 75°C.

Follow NFPA 70 (NEC), or CSA C22.1 part 1, and all local codes.

For DG Breakers larger than 20A, use wire insulated for 90°C based on 75°C ampacities.

Designed in California and New Zealand
Made in Mexico



Gary Foubus
305 N. Lakes Way









ILSCO SGB-4
constructions practice



LISTED
BY



UL 2004
assembled in Mexico

LAY-IN GROUND LUG
STAINLESS-STEEL SCREWS
WIRE RANGE: 4 - 14
1/4" MAX FRAME THICKNESS
ILSCO SOLAR®
PATENT NO. D745346.5

⚠ WARNING: Cancer and Reproductive
Harm - www.P65Warnings.ca.gov

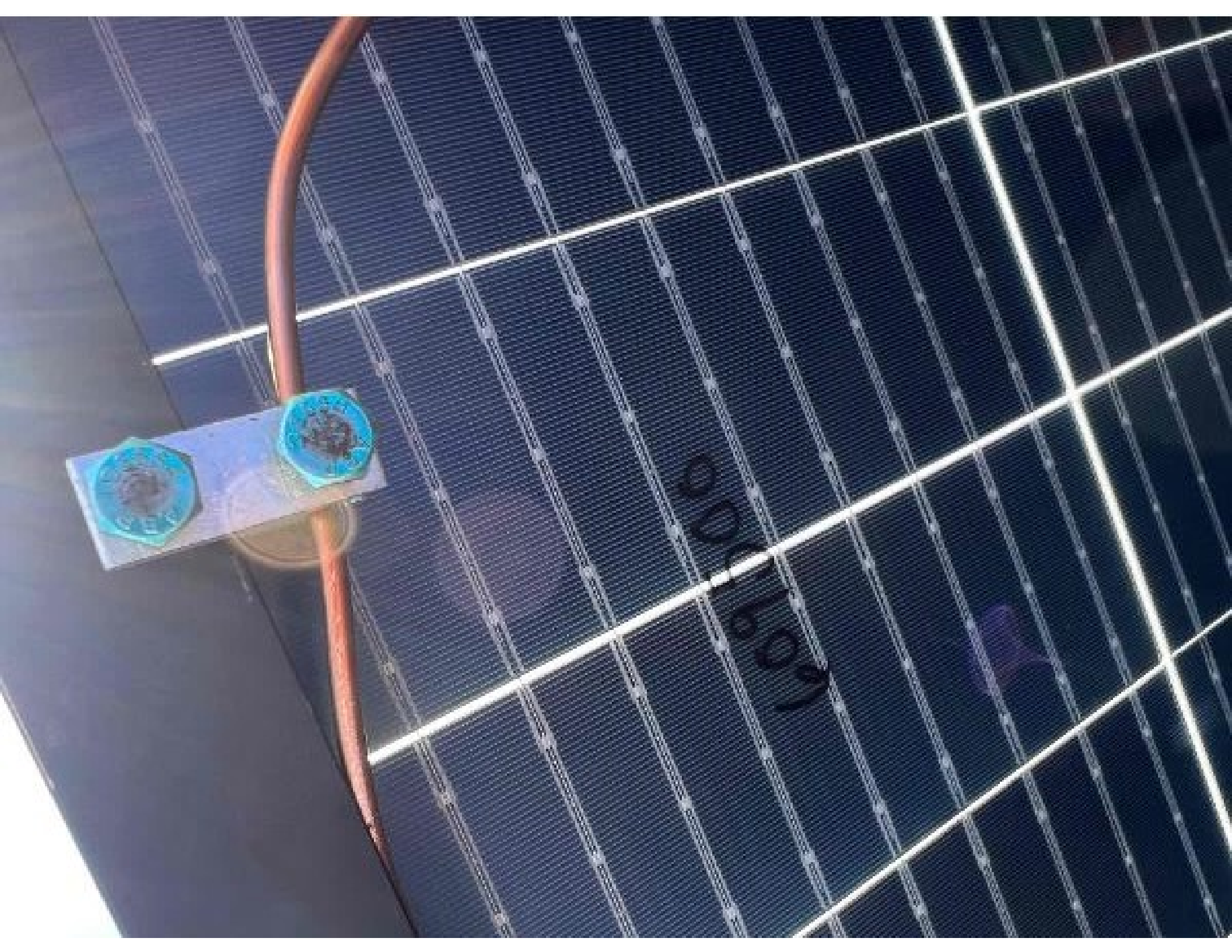
08/20/21



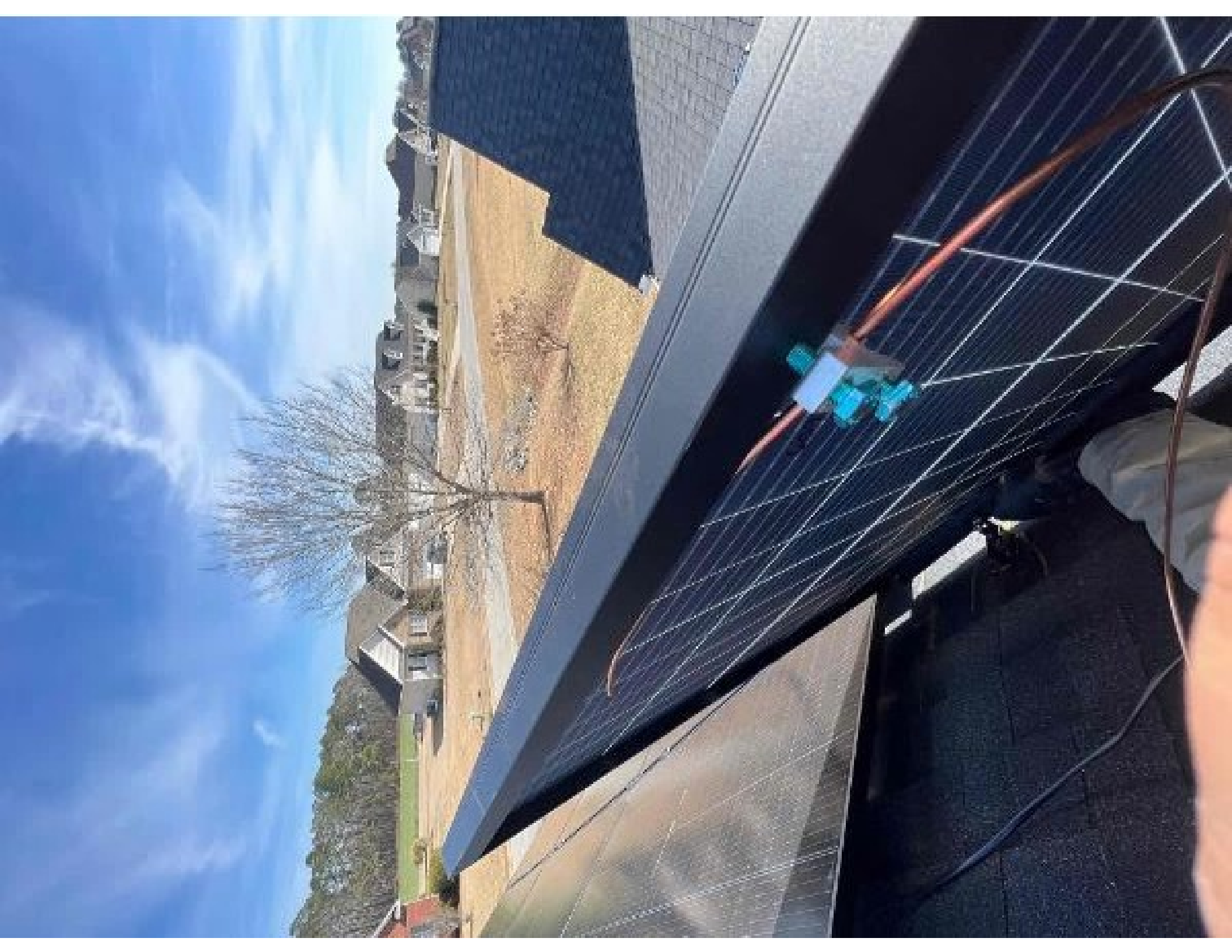
DATE OF MANUFACTURE
00 76354-000075

QTY
50

Panel Ground



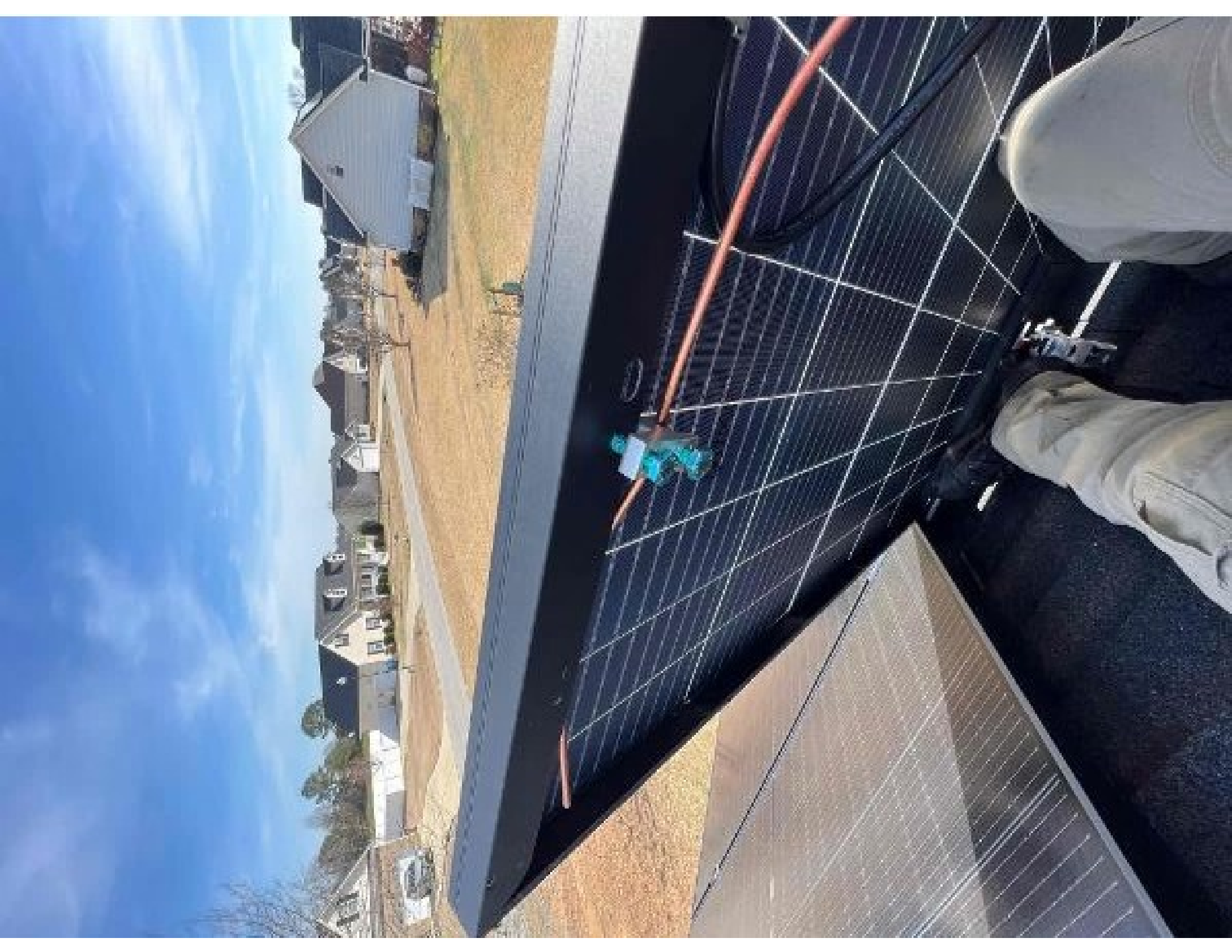
VOLTAGE





WIP







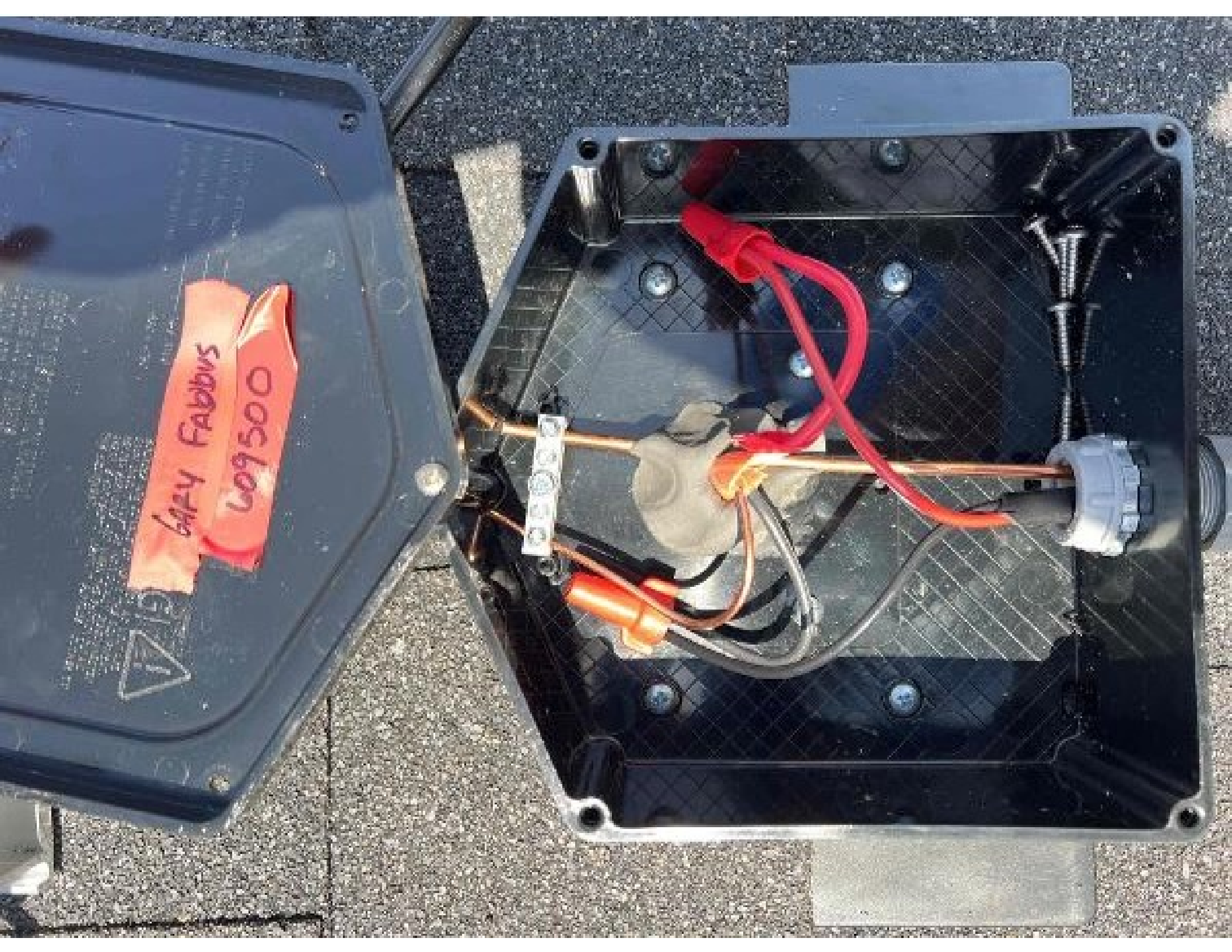




MAX DC VOLTAGE
MAX AC VOLTAGE
MAX CURRENT
MAXIMUM OPERATING TEMPERATURE

Gray Fanbus
60A500





GARY FABBUS
609500





Greeny Fanlight
Brown computer cable



Terminal Block



Dishwasher

Familyroom

NOOK AND KITCHEN
OFFICE 1

MICROWAVE

A-C UP

Shed

PI SOLAR BREAKER
DO NOT SET OFF
THIS CIRCUIT
DEVICE



secured by **ADT**
ADT Security Services

PHOTOVOLTAIC SYSTEM
AC DISCONNECT

WARNING ⚠

DUAL POWER SUPPLY

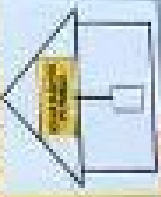
ELECTRIC SHOCK HAZARD

TO AVOID ELECTRIC SHOCK,
TURN OFF BOTH THE MAIN AC DISCONNECT
AND THE PHOTOVOLTAIC SYSTEM
DISCONNECT BEFORE WORKING ON THE
ELECTRICAL SYSTEM.

OPERATING VOLTAGE: 600 VDC
OPERATING CURRENT: 100 A

**SOLAR PV SYSTEM EQUIPPED
WITH RAPID SHUTDOWN**

TURN RAPID SHUTDOWN
SWITCH TO THE
"OFF" POSITION TO
SHUT DOWN PV SYSTEM
AND REDUCE
SHOCK HAZARD
IN THE ARRAY



WARNING ⚠

THIS EQUIPMENT IS NOT TO BE USED FOR
ANY OTHER PURPOSES. THE USE OF THIS
EQUIPMENT FOR ANY OTHER PURPOSES
IS PROHIBITED.

WARNING ⚠

IF YOU NOTICE ANY UNUSUAL
SMELLS, SMOKE, OR HEAT FROM
THIS EQUIPMENT, STOP USING IT
IMMEDIATELY AND CONTACT
A QUALIFIED ELECTRICIAN.

PHOTOVOLTAIC SYSTEM
AC DISCONNECT

WARNING 
DUAL POWER SUPPLY

WARNING: THIS EQUIPMENT IS FED BY MULTIPLE SOURCES. TOTAL SALES OF ALL OVERCURRENT DEVICES, EXCLUDING MAIN SUPPLY OVERCURRENT DEVICE, SHALL NOT EXCEED AMPLICITY OF BUSBAR.

OPERATING VOLTAGE: 120VAC

OPERATING CURRENT: 100A

OPERATING VOLTAGE: 120VAC

OPERATING CURRENT: 100A

OPERATING VOLTAGE: 120VAC

OPERATING CURRENT: 100A


WARNING 

THIS EQUIPMENT IS FED BY MULTIPLE SOURCES. TOTAL SALES OF ALL OVERCURRENT DEVICES, EXCLUDING MAIN SUPPLY OVERCURRENT DEVICE, SHALL NOT EXCEED AMPLICITY OF BUSBAR.

WARNING 


PHOTOVOLTAIC SYSTEM
COMBINER PANEL

DO NOT ADD LOADS

WARNING 

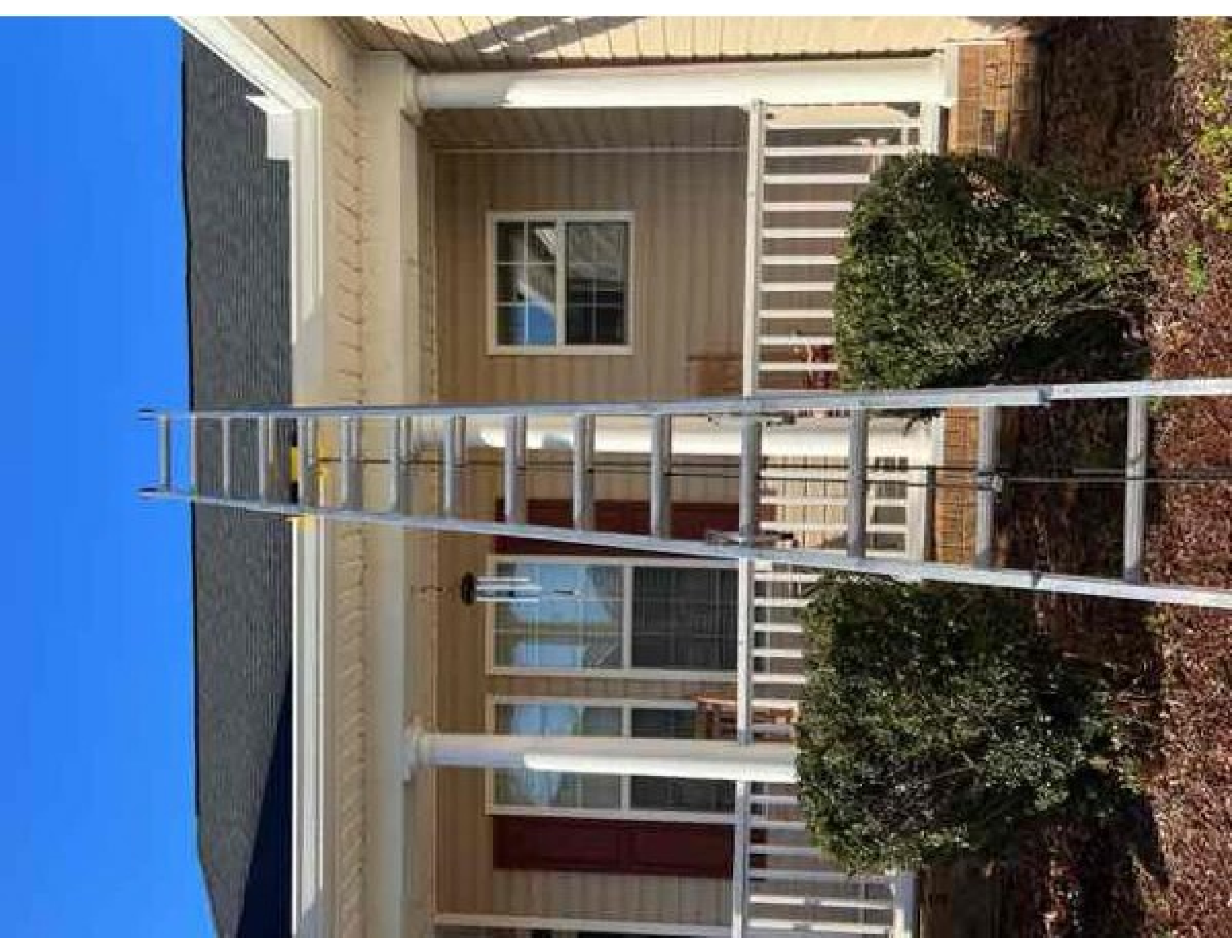
WARNING: THIS EQUIPMENT IS FED BY MULTIPLE SOURCES. TOTAL SALES OF ALL OVERCURRENT DEVICES, EXCLUDING MAIN SUPPLY OVERCURRENT DEVICE, SHALL NOT EXCEED AMPLICITY OF BUSBAR.

 ENPHASE

 **WARNING**

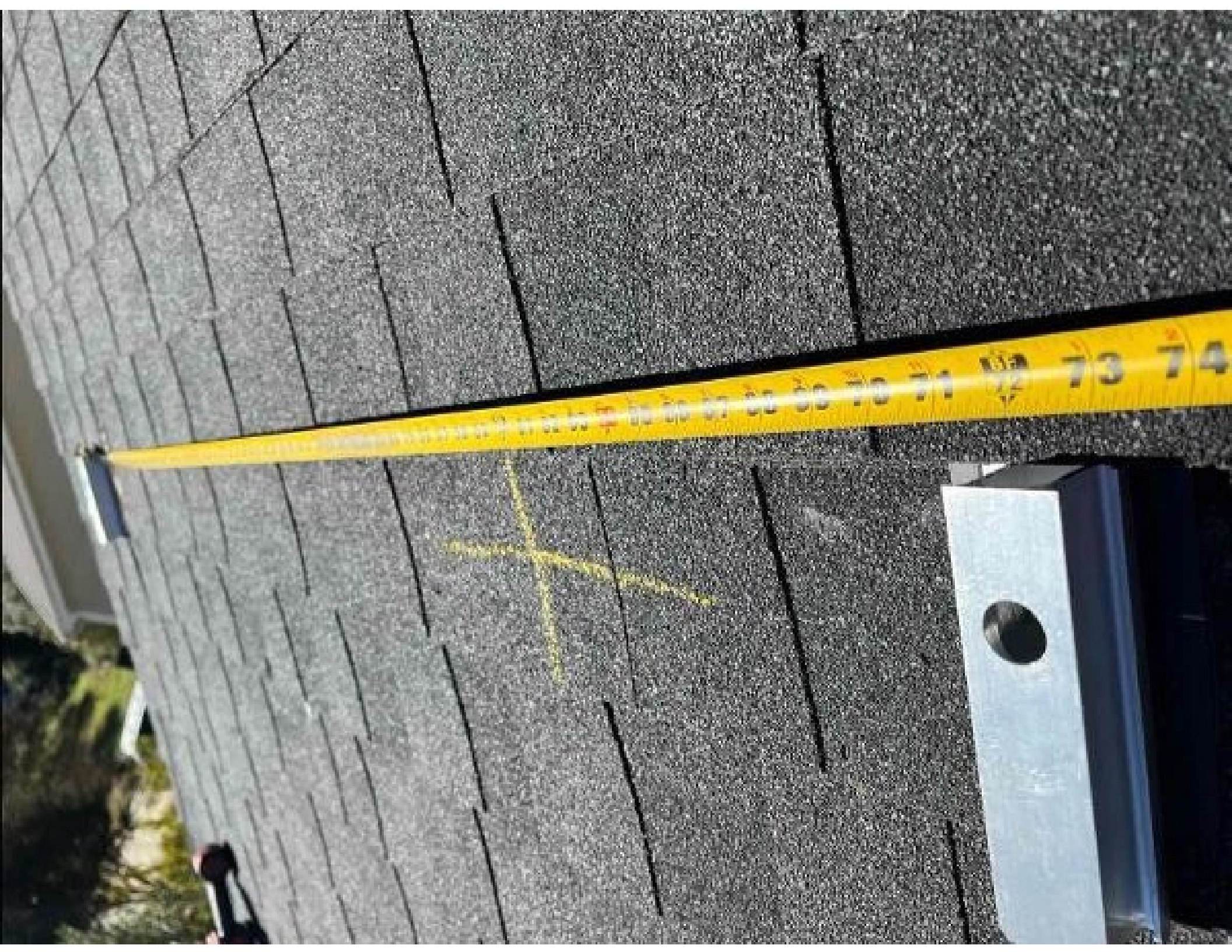
ELECTRIC SHOCK HAZARD

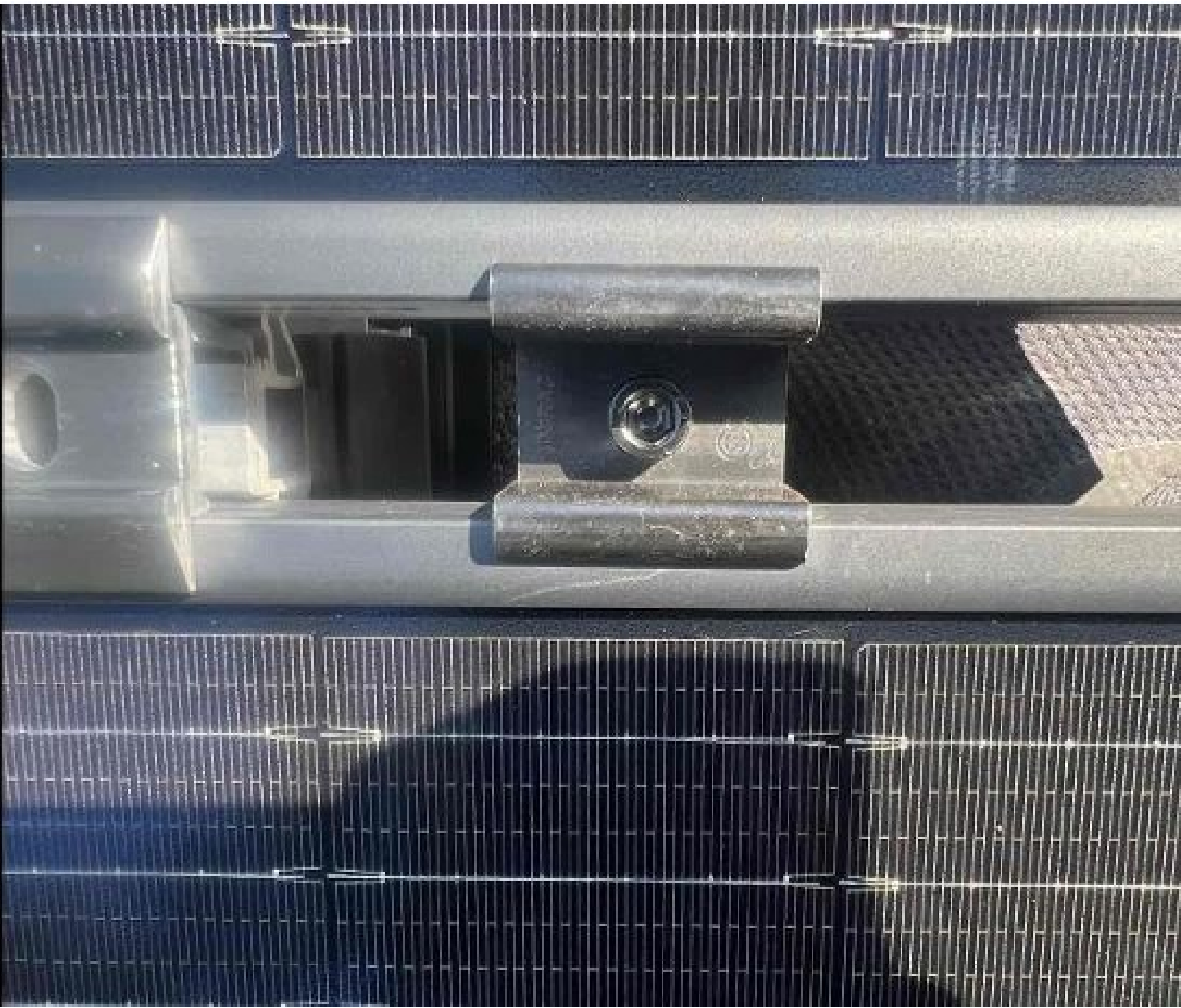
**TERMINALS ON THE LINE AND
LOAD SIDES MAY BE ENERGIZED
IN THE OPEN POSITION**



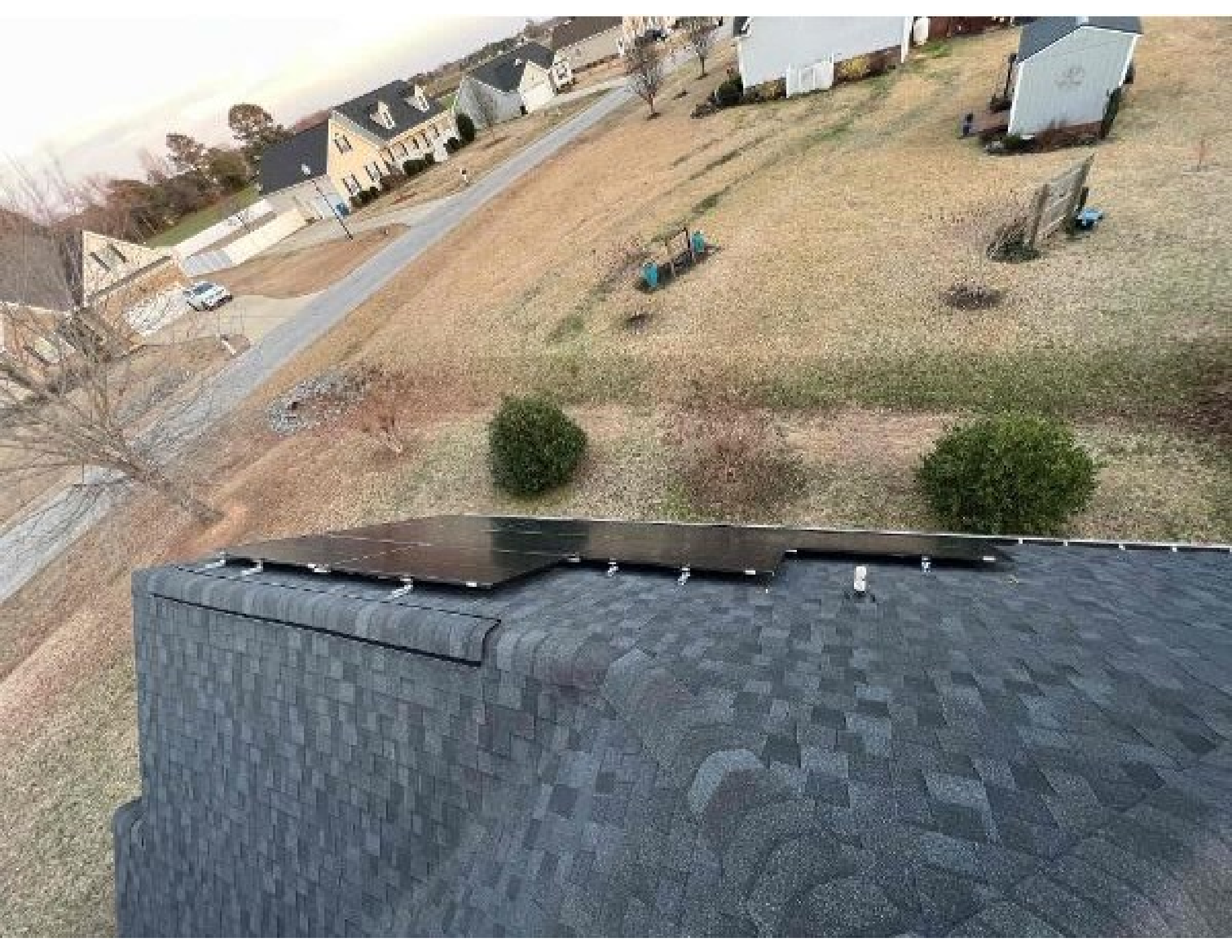






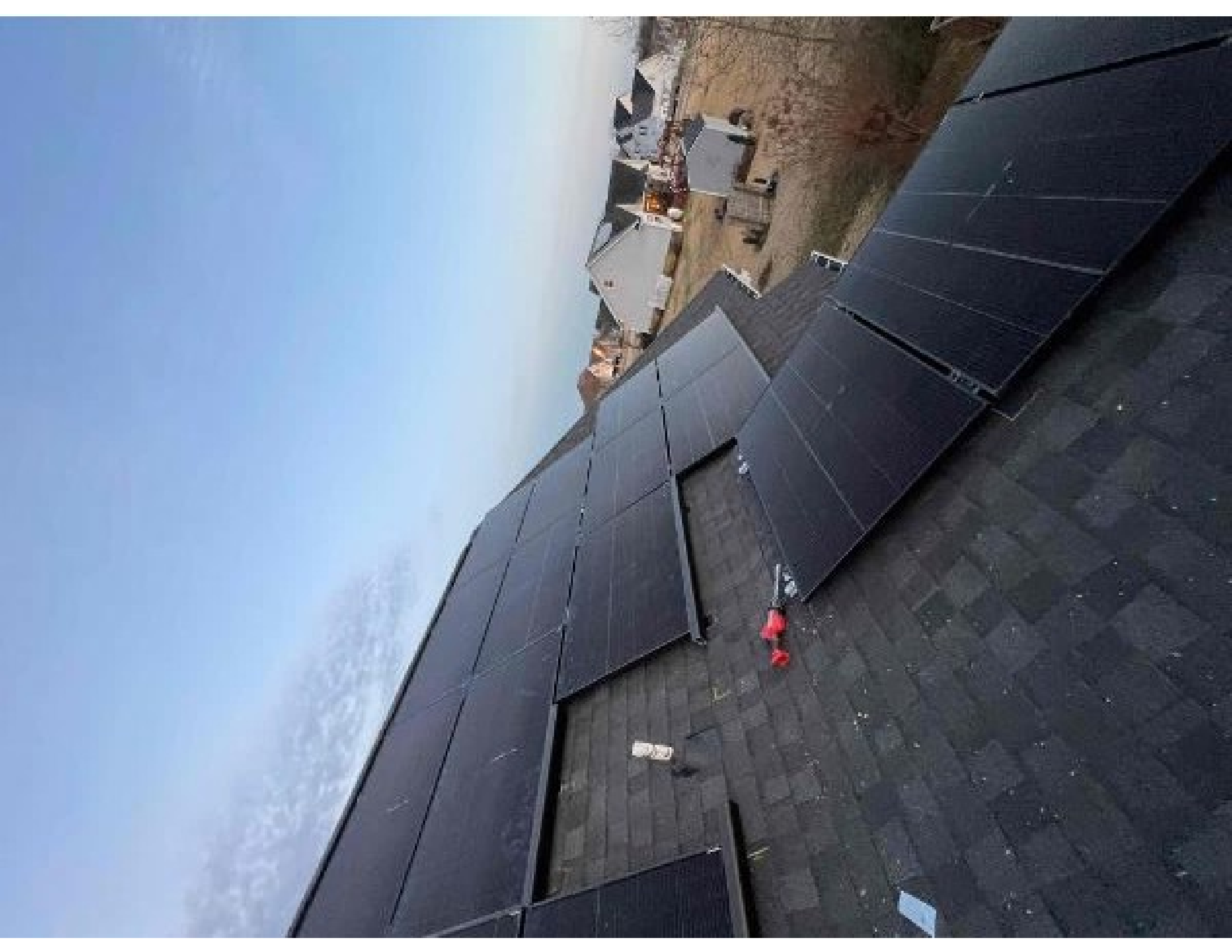


















Job Hazard Analysis

CUSTOMER NAME: Chris Mathis
INSTALLATION DATE: 12-10-22

ADDRESS: 199 High Woods Ridge, Pittsboro, NC 27567

HAZARD CATEGORY	POTENTIAL HAZARDS	HAZARD CONTROLS
Ladder Safety	<ul style="list-style-type: none"> • Dislodgement • Drifts/Pushes • Distraction 	ladder 3ft above eave and horns
Fall Protection	<ul style="list-style-type: none"> • Fall from 6' or greater 	proper anchors and harness of ropes
Electrical Safety	<ul style="list-style-type: none"> • Deenergization • ARC flash 	wear PPE, use proper tools
Heat & Related Issues	<ul style="list-style-type: none"> • High heat - 80° to 90° • Extreme heat - 100° or higher 	Break when needed and stay hydrated
Public Protection	<ul style="list-style-type: none"> • Falling objects • Slip/tripping 	Caution tape around site of cones
NEAREST HOSPITAL:	Woke Med Apex Healthplex 120 healthplex way Apex, NC 27502	
SAFETY CONTACT:	Henry Mullis 828-296-5514	
Additional Notes		
Falling Objects Slips Trips	Falls Cuts Weather Conditions	Paper Lifting
Crew Members:		
	Name	Signature
1	William Scheel	<i>William Scheel</i>
2	Alfredo DeLeon	<i>Alfredo DeLeon</i>
3		
4		
5		
6		

Devin Brown
Crew Lead (print)

[Signature]
Crew Lead (signature)









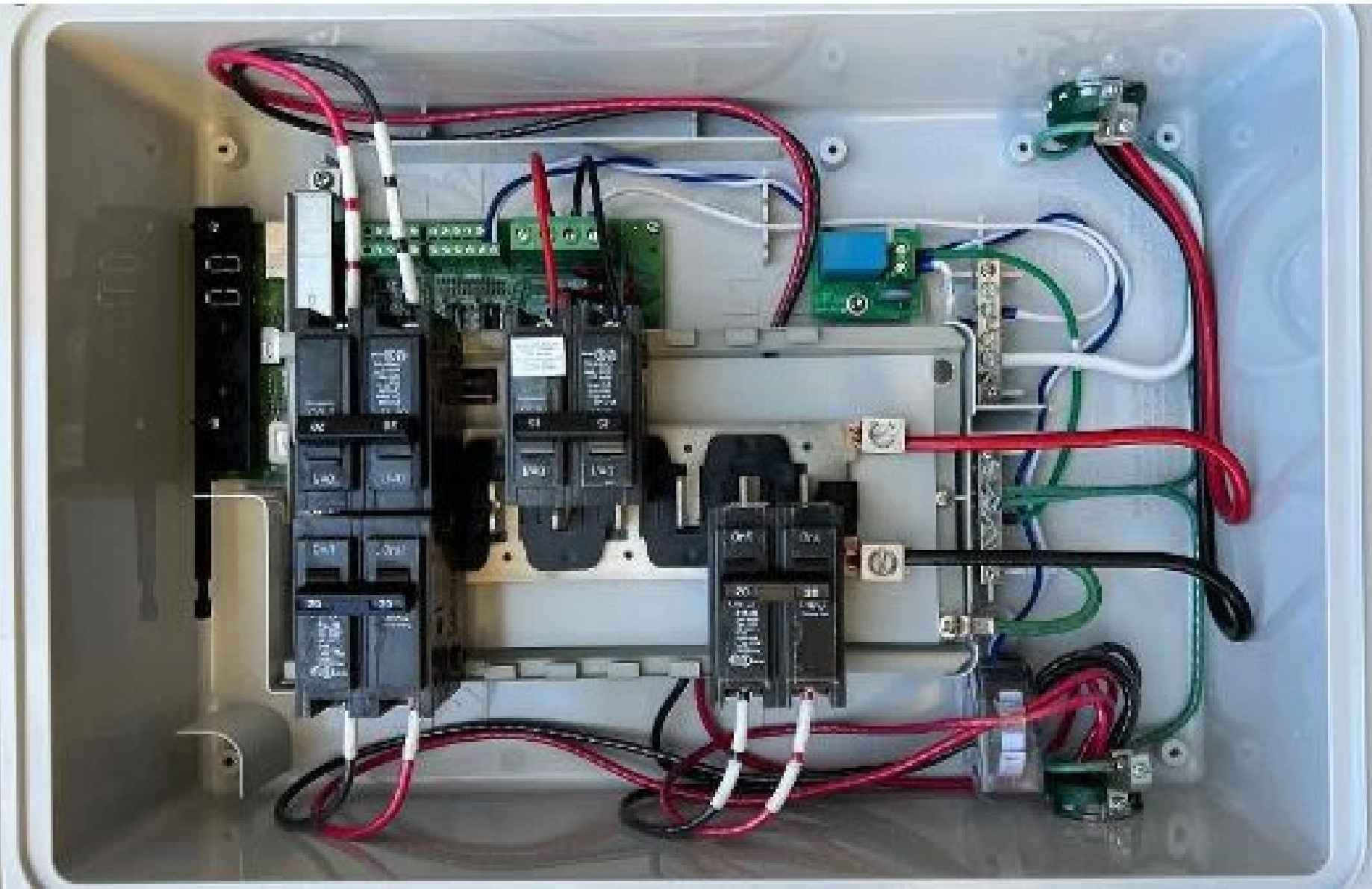




















WARNING:
ENERGIZED PANELS KILL.
DEATH BY ELECTRIC SHOCK
CAN OCCUR INSTANTLY.
ALWAYS USE PROPER SAFETY
PROCEDURES. ALWAYS USE
PROPER SAFETY PROCEDURES.
ALWAYS USE PROPER SAFETY
PROCEDURES.

ENJOY

WARNING:
ENERGIZED PANELS KILL.
DEATH BY ELECTRIC SHOCK
CAN OCCUR INSTANTLY.
ALWAYS USE PROPER SAFETY
PROCEDURES. ALWAYS USE
PROPER SAFETY PROCEDURES.
ALWAYS USE PROPER SAFETY
PROCEDURES.









E-T-N
Circuit Breaker

CSR 25K

175 A
2 POLE
120/240 V ~
60Hz 40°C
CM CSR2175H
5Pole 7800C07002



120/240 V ~
60Hz 40°C
CM CSR2175H
5Pole 7800C07002



ON 175

TRIP
OFF

108 109 110

140 141









RECYCLED PAPER
100% RECYCLED PAPER
100% RECYCLED PAPER





840-00388-15
250VAC 20A
+79°C 2149

UL
277

























