



SKU # CELLMODEM-M1-06-SP-05 Support: enphase.com/support



861-00779 15

PIN



8901882004771349715F

ICC ID



865640060632905

IMEI No



202232052422

SIN

CONTAINS

FCC ID: XMR201707BG96
IC ID: 10224A-2017088090

POWER REQUIREMENTS
5Vdc @ 500mA



LISTED

ACCESSORY - ITE
E98193

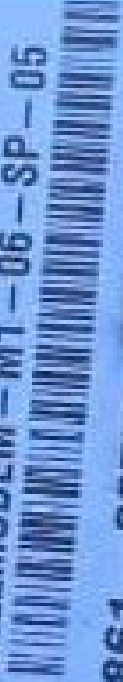
DESIGNED IN INDIA, MANUFACTURED IN MEXICO

PHASE®

 ENPHASE

Model number:

CELLMODEM - M1 - 06 - SP - 05



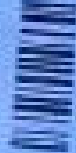
Part number:

861 - 00779



Qty:

01



Serial number:

202232052422









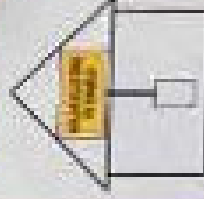






SOLAR PV SYSTEM EQUIPPED WITH RAPID SHUTDOWN

TURN RAPID SHUTDOWN SWITCH TO THE "OFF" POSITION TO SHUT DOWN PV SYSTEM AND REDUCE SHOCK HAZARD IN THE AREA!



WARNING
DUAL POWER SUPPLY
SOURCES: UTILITY GRID AND PV SOLAR ELECTRIC SYSTEM

EMERGENCY DISCONNECT
SEE INSTRUCTIONS ON THE 1.1 MANUAL FOR PV SYSTEM

WARNING
ELECTRICAL SHOCK HAZARD
TERMINALS ON THE LINE AND LOADS MUST ALWAYS BE ENERGIZED AT THE GIVEN POSITION

WARNING
ALL WIRING MUST BE INSTALLED IN ACCORDANCE WITH THE NATIONAL ELECTRICAL CODE (NEC) AND ALL APPLICABLE LOCAL AND STATE ELECTRICAL CODES. ALL WIRING MUST BE INSTALLED IN ACCORDANCE WITH THE MANUFACTURER'S INSTALLATION INSTRUCTIONS AND ALL APPLICABLE LOCAL AND STATE ELECTRICAL CODES.

WARNING
THESE SYSTEMS ARE DESIGNED TO BE INSTALLED IN ACCORDANCE WITH THE NATIONAL ELECTRICAL CODE (NEC) AND ALL APPLICABLE LOCAL AND STATE ELECTRICAL CODES. ALL WIRING MUST BE INSTALLED IN ACCORDANCE WITH THE MANUFACTURER'S INSTALLATION INSTRUCTIONS AND ALL APPLICABLE LOCAL AND STATE ELECTRICAL CODES.



Maximum Voltage
Maximum Current

MAX PHASE DERATE DUE TO THE
THE CHARGE CONTROLLER
OR DC-TO-DC CONVERTER
IF APPLICABLE

100V
10A

**CAUTION: DO NOT INSTALL
ADDITIONAL LOADS IN THIS PANEL.**

▲ WARNING
ELECTRICAL SHOCK HAZARD
TERMINALS ON THE LINE AND
LIVE SIDES MAY BE ENERGIZED
IN THE OPEN POSITION

▲ WARNING
THIS EQUIPMENT FEEDS BY
MULTIPLE SOURCES
TOTAL RATING OF ALL OVERCURRENT
DEVICES INCLUDING MAIN POWER
SUPPLY SHALL NOT EXCEED
CAPACITY OF BUSBAR

▲ WARNING
BATTERIES MUST BE DISCONNECTED
BEFORE THE BATTERIES ARE SERVICED
FROM THE BATTERY SOLUTIONS UNIT
TO PREVENT DAMAGE TO THE BATTERY
SOLUTIONS UNIT AND TO PREVENT FIRE
AND LIFE LOSS.

10/10

20.0000

WARNING

⚠️ DEENERGIZE ALL CIRCUITS BEFORE INSTALLING THE CT LEAD WIRES. BELOW THIS DEENERGIZE SAFETY HAZARD AND RISK OF EQUIPMENT DAMAGE IF INSTALLED WHILE CIRCUITS ARE ENERGIZED



100A



CIRCUIT 1



WARNING
DO NOT ATTEMPT TO REMOVE THE COVER OF THIS ELECTRICAL PANEL WHILE THE CIRCUITS ARE ENERGIZED. CONTACT THE MANUFACTURER FOR ASSISTANCE.







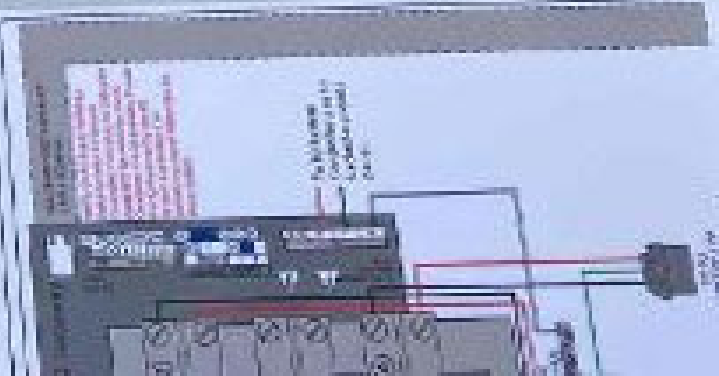
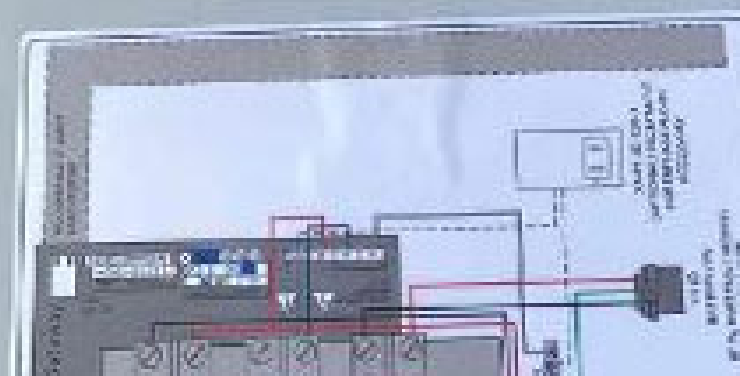




CIRCUIT 1
20 20
200 200
20 20
200 200

CIRCUIT 1

WARNING
READ INSTRUCTIONS AND LISTED
REQUIREMENTS CAREFULLY BEFORE
INSTALLATION TO AVOID INJURY OR
PROPERTY DAMAGE. ALWAYS USE
PROPER WIRING TECHNIQUES.
- ELECTRICAL CODES VARY



ALLIED

▶▶▶ Planning group select particular approach to its program
▶▶▶ Planning under other (S)university of Technology Ltd



IQ Combiner 4

Photovoltaic

Combiner Box

X-IQ-AM1-240-4



Electrical ratings

Voltage 240VAC, 60Hz

DG Breakers 80A MAX (combined)

DG Inputs 64A MAX (combined)

Output 65A MAX, 90A MAX feeder CCPO

Temperature 45°C MAX ambient

For DG breaker, use only Eaton BR series.

202248077465

SN 202249077465

P/N#

883-00356 23

Dedicated solar and DG Combiner Box - do not add loads.
10 AMP or 15 AMP G-Subway Breaker not used for backfeed

Connection

DG Breaker (1, 2, 3, 4)

60A Circuit Breaker only
10 Gateway Breaker

Neutral and ground

Large screw

Small screw

Main lug

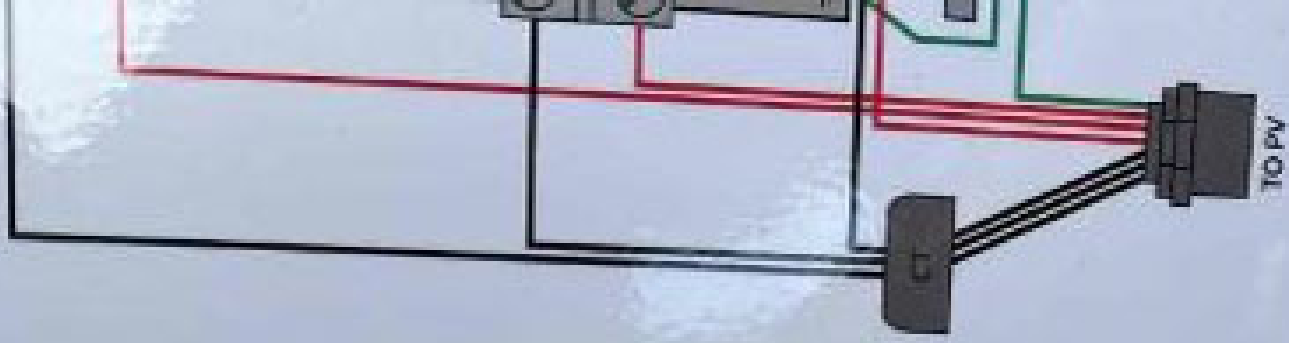
Wire Sizes	Torque
14-10 AWG	2.2 Nm (20 lb-in)
8 AWG	2.6 Nm (23 lb-in)
6-4 AWG	3.0 Nm (27 lb-in)
4-1/0 AWG	5.0 Nm (45 lb-in)
14-10 AWG	2.26 Nm (20 lb-in)
2-1/0 AWG	5.6 Nm (49 lb-in)
14-3 AWG	5.1 Nm (45 lb-in)
6 AWG	3.6 Nm (32 lb-in)
8 AWG	2.6 Nm (23 lb-in)
10-14 AWG	2.3 Nm (20 lb-in)
10-4 AWG	5.0 Nm (45 lb-in)
1-2/0 AWG	5.6 Nm (50 lb-in)

Temp's construction only rated max. 75°C
Hubbush, or CSA C22.1 part 1, and all local Codes.

For DG Breaker larger than 20A, use wire insulated for 60°C
See technical specifications.

Designed in California and New Zealand
Manufactured in Mexico

For IQ-8 Grid
Forming Sys





D. 1122
P. 1122
1940 San J. Is.
Mary Springs
Elev: 1000
H. 1122



Bussetron

FUSETRON

ENERGY EFFICIENT
SULFUR FREE
CLASS RFI FREE

FRN-R-40

250Vac

AC IR 200A

125Vdc

DC IR 200A

Bussetron

FUSETRON

ENERGY EFFICIENT
SULFUR FREE
CLASS RFI FREE

FRN-R-40

250Vac

AC IR 200A

125Vdc

DC IR 200A































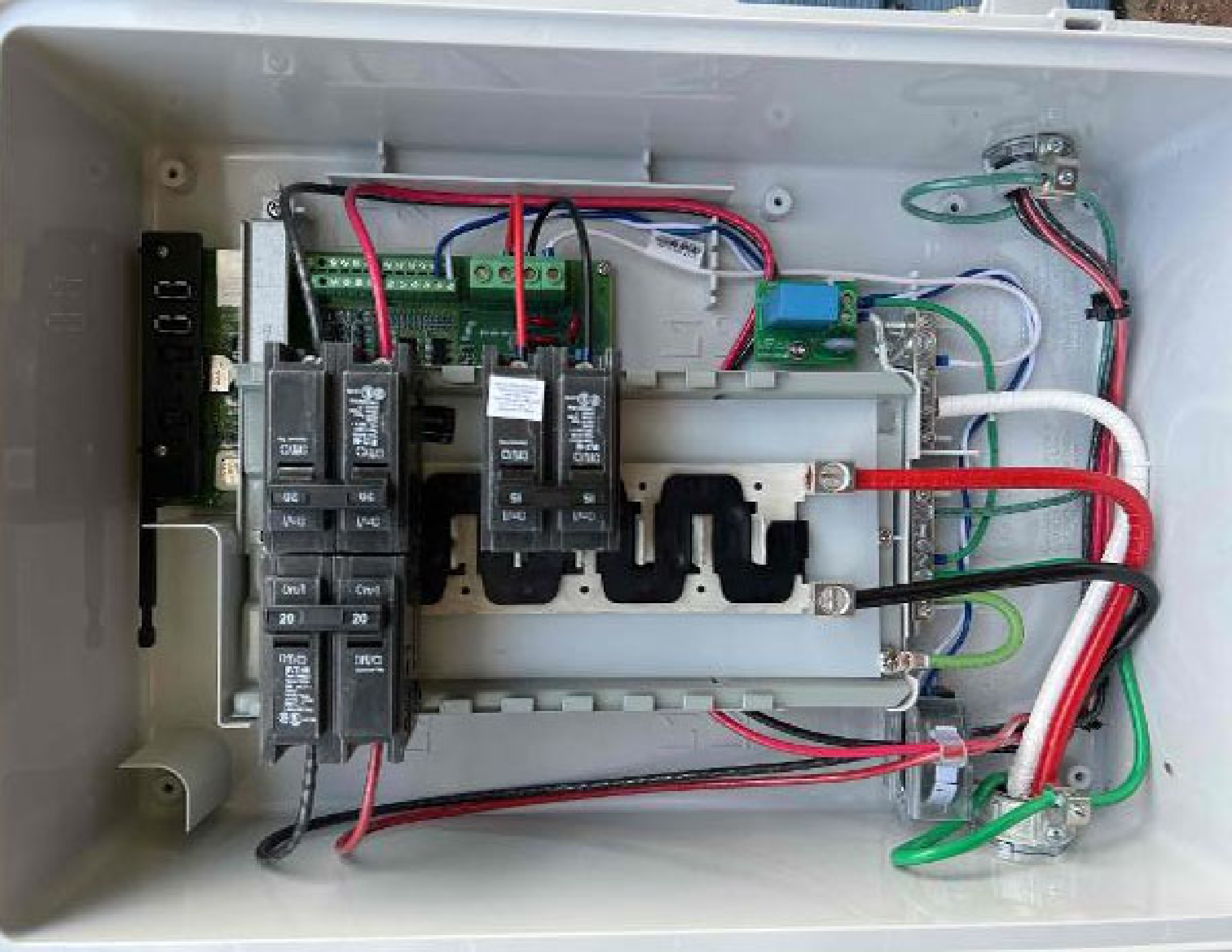


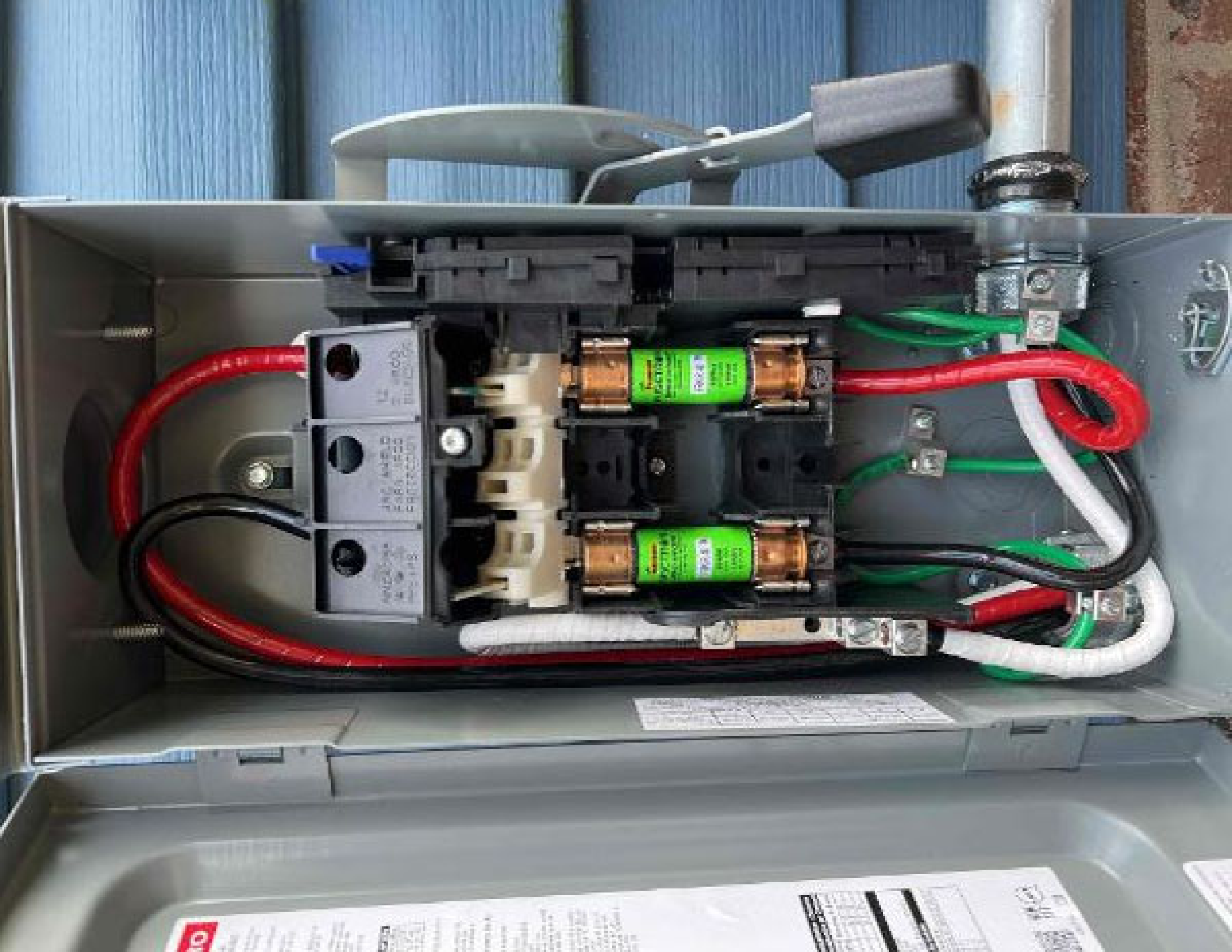
Chapman
1900-1910
1910-1920
1920-1930
1930-1940
1940-1950
1950-1960
1960-1970
1970-1980
1980-1990
1990-2000
2000-2010
2010-2020

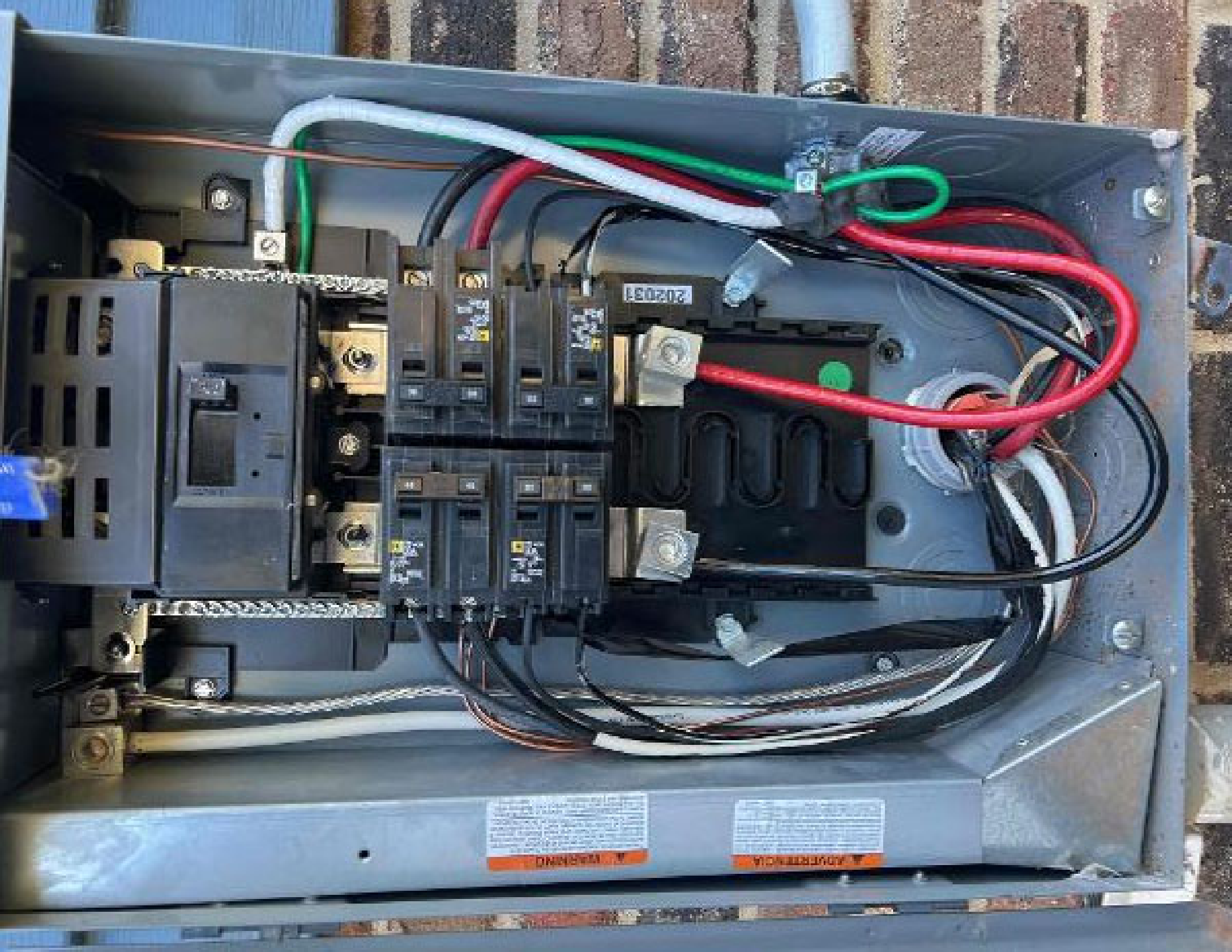












202051

! WARNING

¡ ADVERTENCIA



4888 C711
ENCLOSURE
WARNING BOARD
PART NO. 15000000

110041

202

























07/2019
CONCRETE FORMS TOUL. STD 2703
PATENT PENDING
LUBRACO MFR. 5-1

0000

Trinasolar
L01221000130054



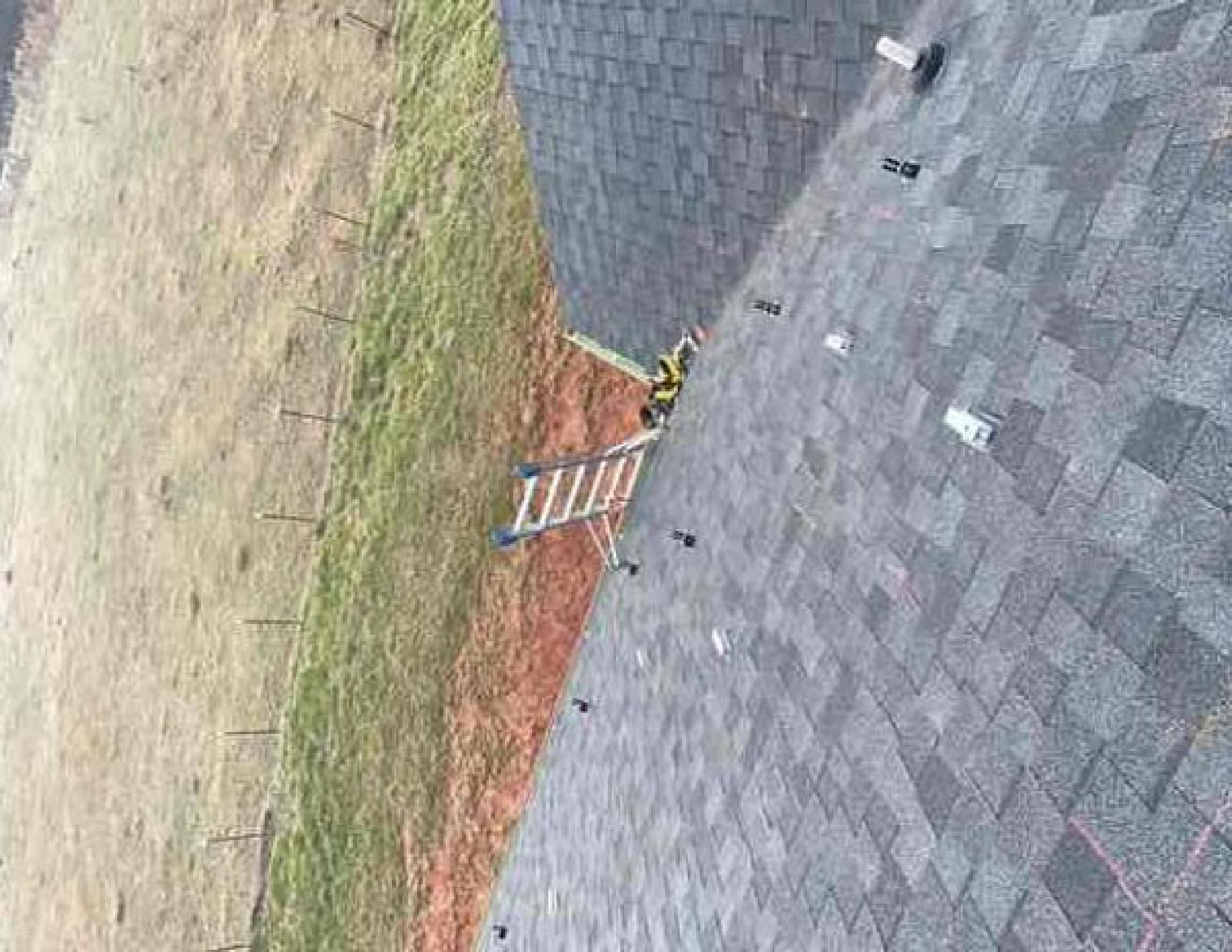




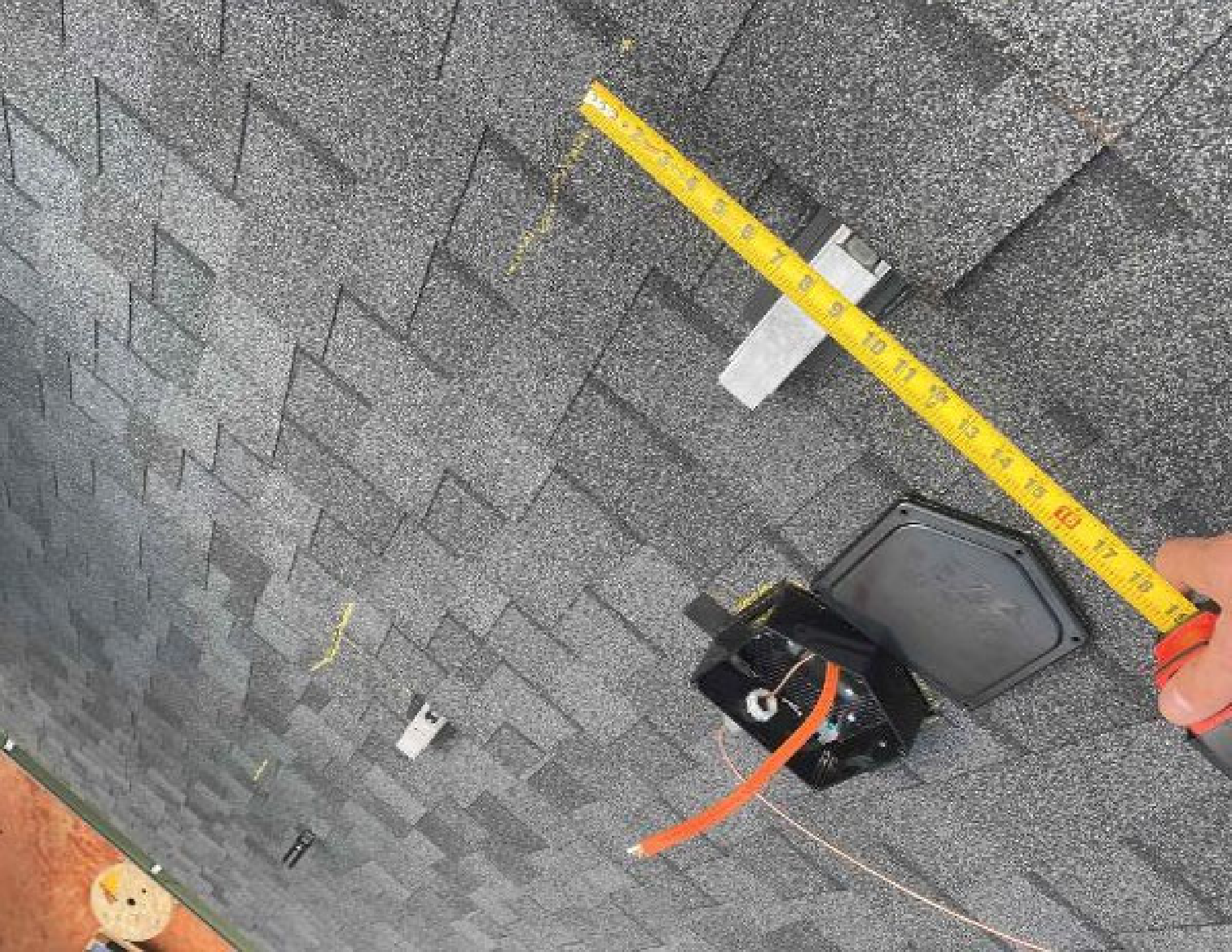
















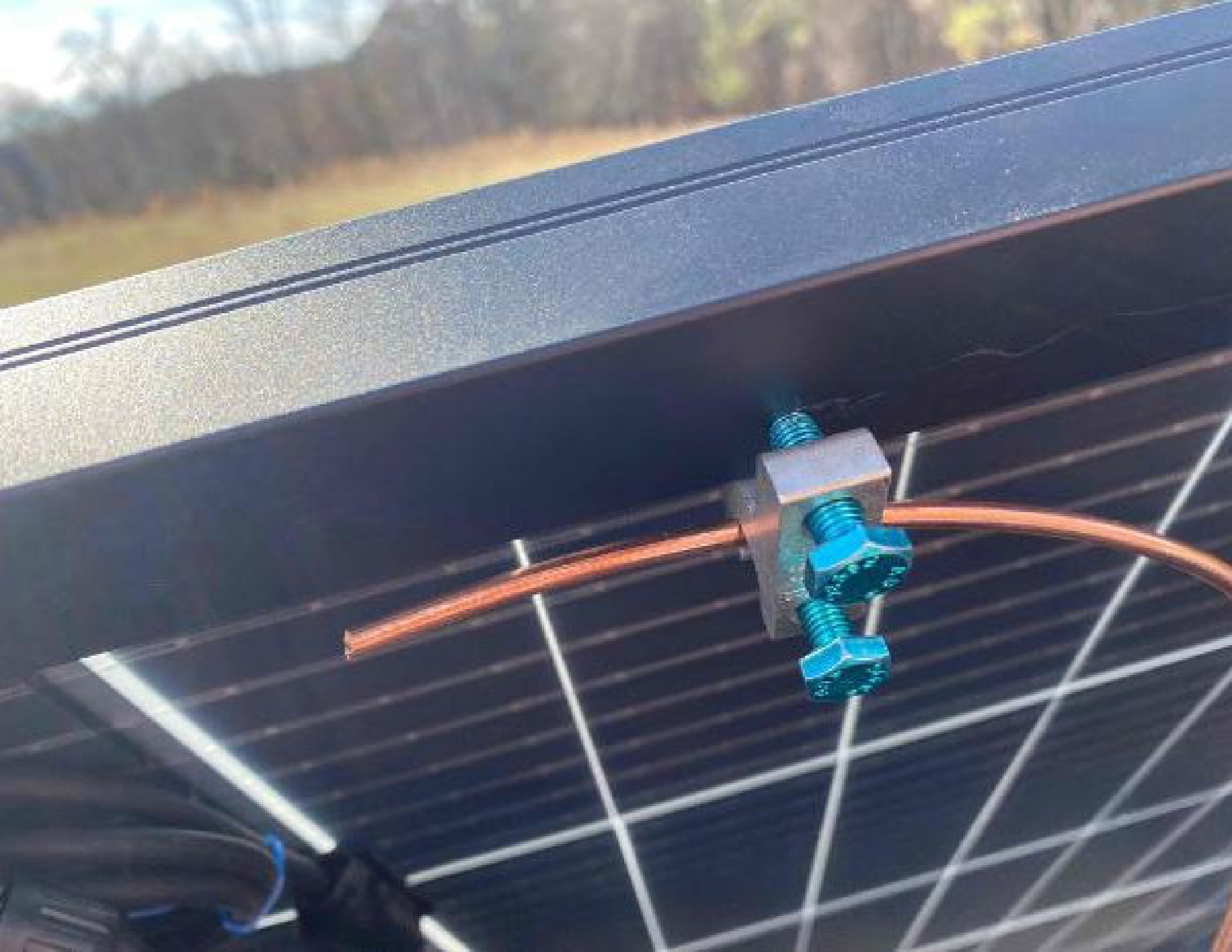
PATENTS WWW.UNIBAC.COM/PATENTS
CONFORMS TO UL 610 2103

0512022

UNIBAC SPM

UNIBAC UNIBAC UNIBAC

















UNIRAC SFM INFINITY RACKING
FOR MOUNTING AND GROUNDING SOLAR SYSTEMS

UL 1703, UL 2703



164

640-00388-16
250VAC 20A
4791C 2202









RECEIVE HERE

0-4-11

Quest. Manager
1-11-13

NO.	DESCRIPTION	QTY	UNIT	PRICE	TOTAL
	HORNS / STRAP				
	ROPES				
	SHORT OPS				
	SHORTS				
	STRAPS				

Central Harvest

Alfredo Delfino AD
MATE MATEMATEL N JT







HD Prime
FSC
HD Prime
FSC
HD Prime
FSC
HD Prime
FSC
HD Prime
FSC
HD Prime
FSC

FSC
MIX
WOOD
FSC® C001007

FSC
MIX
WOOD
FSC® C001007

FSC
MIX
WOOD
FSC® C001007











