

 ENPHASE.

SKU # CELL MODEM MIT-36-32-05 Support: enphase.com/en-us/support

PN  861-00779 15

CC  8901882004762990402F

MAC  860092057126753

SN  202237073811

CONTAINS  
FUSES - AMERICAN MADE  
FIBER OPTIC - AMERICAN MADE

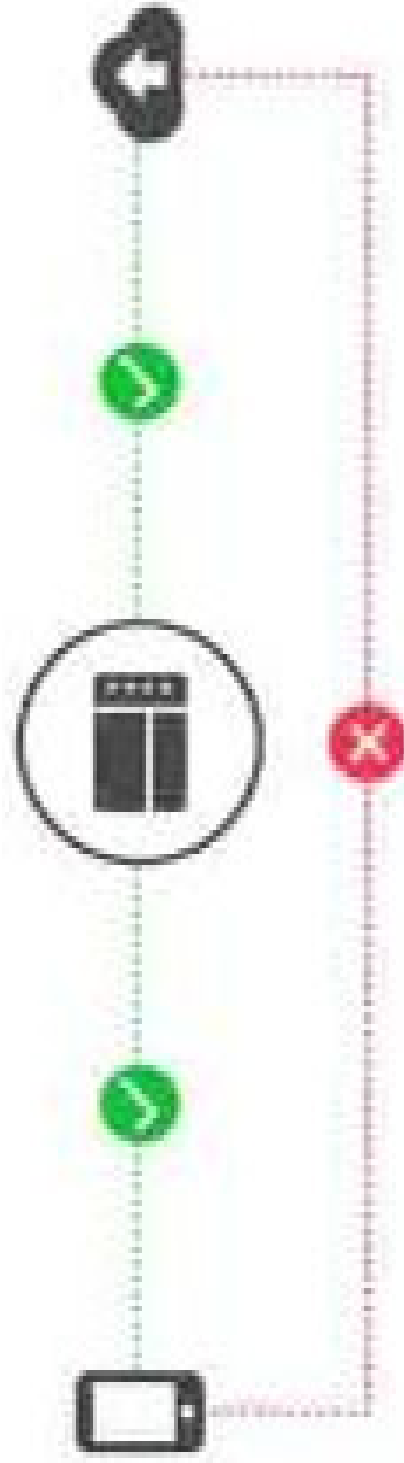
REQUIREMENTS  
See page 10



LISTED  
UL US  
CLASSIFIED BY  
ELECTRICAL

DESIGNED IN THE USA, MANUFACTURED IN THE USA

IQ Gateway 202240172087



**IQ Gateway successfully connected to Enphase  
Cloud and Installer Toolkit**

### IQ Gateway Connectivity Status



Wi-Fi



Ethernet



Cellular

Sprint

Connected













WARNING

DO NOT TOUCH  
INTERNAL COMPONENTS  
OR WIRING





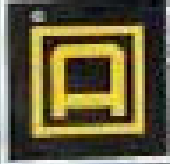






**PHOTOVOLTAIC AC DISCONNECT**  
MAXIMUM OPERATING CURRENT: 14.5A / 100V  
PHOTOVOLTAIC OPENING AC VOLTAGE: 144V AC

**GENERAL DUTY  
SAFETY SWITCH**  
INTERRUPTOR DE  
SEGURIDAD DE  
SERVICIO GENERAL  
30 A  
344-7966 / V-



**A DANGER / PELIGRO**

**REASON:** IN EXISTING PANELS, THE DISCONNECT OF A PV SYSTEM  
MAY BE REQUIRED TO PREVENT ELECTRICAL SHOCK TO PERSONNEL  
WORKING ON THE PV SYSTEM.

- This switch is designed for use with PV systems that are installed in accordance with the National Electrical Code (NEC) and the applicable local codes.
- This switch is designed for use with PV systems that are installed in accordance with the National Electrical Code (NEC) and the applicable local codes.
- This switch is designed for use with PV systems that are installed in accordance with the National Electrical Code (NEC) and the applicable local codes.
- This switch is designed for use with PV systems that are installed in accordance with the National Electrical Code (NEC) and the applicable local codes.
- This switch is designed for use with PV systems that are installed in accordance with the National Electrical Code (NEC) and the applicable local codes.
- This switch is designed for use with PV systems that are installed in accordance with the National Electrical Code (NEC) and the applicable local codes.
- This switch is designed for use with PV systems that are installed in accordance with the National Electrical Code (NEC) and the applicable local codes.
- This switch is designed for use with PV systems that are installed in accordance with the National Electrical Code (NEC) and the applicable local codes.
- This switch is designed for use with PV systems that are installed in accordance with the National Electrical Code (NEC) and the applicable local codes.
- This switch is designed for use with PV systems that are installed in accordance with the National Electrical Code (NEC) and the applicable local codes.

**RAPID SHUTDOWN SWITCH  
FOR SOLAR PV SYSTEM**

**WARNING**  
POWER TO THIS BUILDING IS ALSO  
SUPPLIED FROM MAIN DISTRIBUTION  
UTILITY DISCONNECT LOCATED

**WARNING**  
**ELECTRIC SHOCK HAZARD**  
TERMINALS ON THE LINE AND  
LOAD SIDES MAY BE ENERGIZED  
IN THE OPEN POSITION

ON

OFF



**MAXIMUM VOLTAGE**  
Maximum Circuit Current

Use rated output capacity of  
the inverter. Do not exceed  
or do not connect  
if installed.

100A

**CAUTION: DO NOT INSTALL  
ADDITIONAL LOADS IN THIS PANEL**

**⚠ WARNING**  
**ELECTRICAL SHOCK HAZARD**

TERMINALS ON THE LINE AND  
LOAD SIDES MAY BE ENERGIZED  
IN THE OPEN POSITION

**⚠ WARNING**

THIS EQUIPMENT FED BY  
MULTIPLE SOURCES.  
TOTAL RATING OF ALL OVERCURRENT  
DEVICES EXCLUDING MAIN POWER  
SUPPLY SHALL NOT EXCEED  
CAPACITY OF BUSBAR

**⚠ WARNING**

MAXIMUM SAFETY DISTANCE  
MUST BE MAINTAINED TO PREVENT  
ELECTRIC SHOCK. CONTACT WITH  
ELECTRICAL COMPONENTS WHILE  
OPERATING MAY CAUSE SEVERE OR FATAL  
INJURY OR DEATH.

59.900

### WARNING

DO NOT TOUCH ANY CIRCUITS BEFORE INSTALLING THE CT LEAD WIRES. BEWARE OF THE RISK OF SAFETY HAZARD AND RISK OF EQUIPMENT DAMAGE IF INSTALLED WHILE CIRCUITS ARE ENERGIZED.



breakout

**WARNING**  
This circuit breaker is not to be used for applications other than those specified in the instructions. See the instructions for more information.



ENVOY

**CAUTION**  
PREVENT ELECTRIC SHOCK. DO NOT TOUCH THE CIRCUITS.



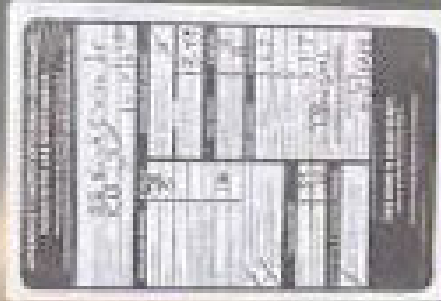
**WARNING**  
This circuit breaker is not to be used for applications other than those specified in the instructions. See the instructions for more information. If you have any questions, contact your distributor.

**CAUTION**  
This circuit breaker is not to be used for applications other than those specified in the instructions. See the instructions for more information. If you have any questions, contact your distributor.



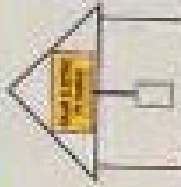
THIS IS A HIGH-VOLTAGE DEVICE. DO NOT TOUCH THE CIRCUITS.





**SOLAR PV SYSTEM EQUIPPED WITH RAPID SHUTDOWN**

TURNS RAPID SHUTDOWN SWITCH TO THE "OFF" POSITION TO SHUT DOWN PV SYSTEM AND REDUCE SHOCK HAZARD IN THE AREA



**WARNING**  
DUAL POWER SUPPLY  
SOURCE: UTILITY GRID AND PV SOLAR ELECTRIC SYSTEM

**WARNING**  
ELECTRICAL SHOCK HAZARD  
TERMINALS ON THE LINE AND CONDUCTORS MAY BE ENERGIZED BY THE OTHER POSITION

**WARNING**  
DUAL POWER SUPPLY SOURCE: UTILITY GRID AND PV SOLAR ELECTRIC SYSTEM

**WARNING**  
ELECTRICAL SHOCK HAZARD  
TERMINALS ON THE LINE AND CONDUCTORS MAY BE ENERGIZED BY THE OTHER POSITION

**WARNING**  
ELECTRICAL SHOCK HAZARD  
TERMINALS ON THE LINE AND CONDUCTORS MAY BE ENERGIZED BY THE OTHER POSITION







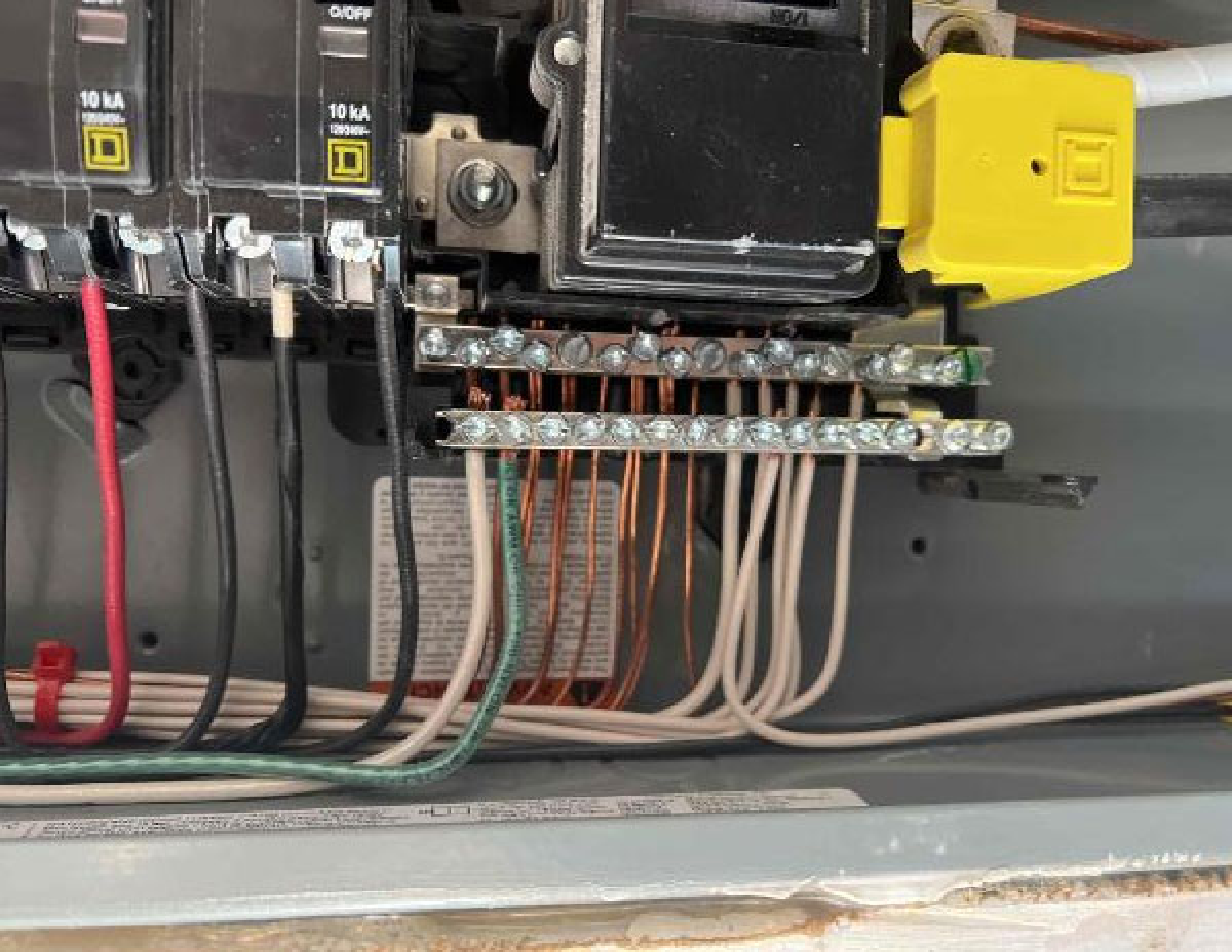


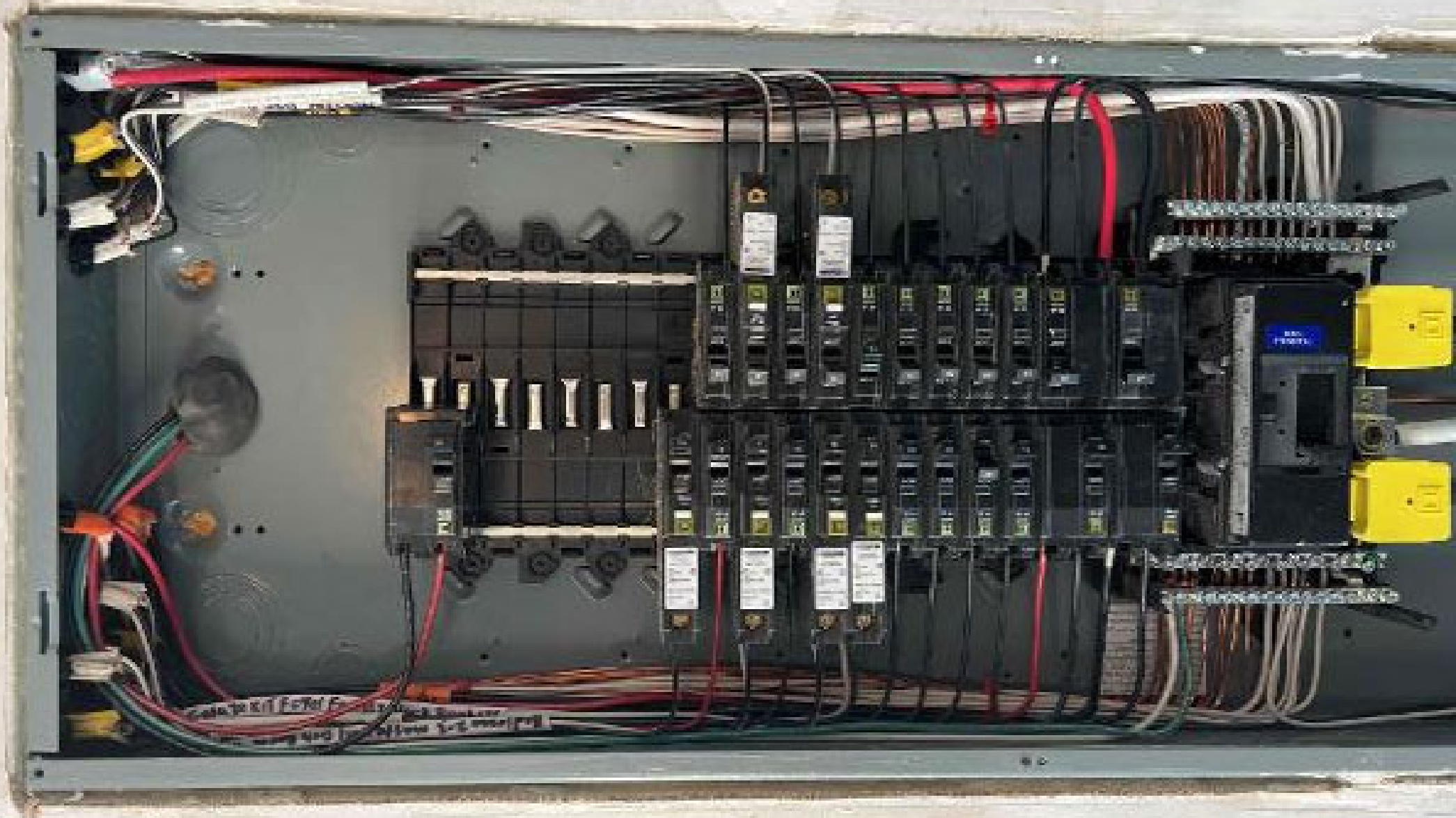


	 <p>2022-08-25 041 - 1700</p>	 <p>2022-08-25 041 - 1700</p>	 <p>2022-08-25 041 - 1700</p>
 <p>2022-08-25 041 - 1700</p>	 <p>2022-08-25 041 - 1700</p>	 <p>2022-08-25 041 - 1700</p>	 <p>2022-08-25 041 - 1700</p>
 <p>2022-08-25 041 - 1700</p>	 <p>2022-08-25 041 - 1700</p>		















**TrinaSolar**  
  
 L01220200620723

# TrinaSolar

TSM-390DE09.05



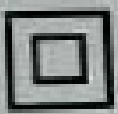
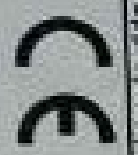
	(Peak)	390W <sup>1</sup>
Maximum Power	(Wmp)	33.8V
Maximum Power Voltage	(Vmp)	11.54A
Maximum Power Current	(Imp)	40.8V
Open Circuit Voltage	(Voc)	12.14A
Short Circuit Current	(Isc)	20A
Maximum Series Fuse		0 - 40W
Power Selection		Class A
Module Application		IEC1500V/UL1500V
Maximum System Voltage		
Temperature Up: See power range of the calculator software. Maximum ground cable length: 100m (328ft)		
Temperature Down: See power range of the calculator software. Maximum ground cable length: 100m (328ft)		

For field connections, use minimum 4mm<sup>2</sup>(No. 12AWG) copper wires insulated for a minimum 90°C



**WARNING-ELECTRICAL HAZARD**  
 This module produces electricity when exposed to light.  
 Follow all applicable electrical safety precautions.

- Module fire resistance rating Class C (per CSA C22.2 No 61730) and module fire performance Type 2 (per UL61730)
- System Fire Class Rating: See Installation Instructions for Installation Requirements to Achieve a Specified System Fire Rating with this Product (Chaise nominale du système contre l'incendie: Voir les instructions d'installation)
- See module literature for appropriate mating connectors (Voir la documentation du module concernant les connecteurs appropriés)



EU COMPLIANT



UL LISTED  
 UL Recognized Component  
 UL Classified  
 UL Classified

www.trinasolar.com

Assembled in Vietnam

ARLED'S

- Flashing green when software upgrade is in progress.
- Flashing amber when IQ Gateway is booting up.



## IQ Combiner 4

Photovoltaic  
Combiner Box

X-IQ-AM1-240-4



**Electrical ratings**

Voltage 240VAC, 60Hz  
 DC Breakers 80A MAX (combined)  
 DC Inputs 60A MAX (combined)  
 Output 65A MAX, 90A MAX Feeder OCPD  
 Temperature 55°C MAX ambient  
 For DC breaker, use only Eaton BR series.

S/N: 202240172067

P/N: 883-00356 20

Dedicated solar and DC Combiner Box - do not add loads.  
 10 AMP or 15 AMP IQ Gateway Breaker not used for backfeed

Connection	Wire sizes	Torque
DC Breaker (1, 2, 3, 4)	14-10 AWG	2.2 Nm (20 lb-in)
	8 AWG	2.8 Nm (25 lb-in)
60A Circuit Breaker only	6-4 AWG	3.0 Nm (27 lb-in)
	4-1/0 AWG	5.0 Nm (45 lb-in)
IQ Gateway Breaker	14-10 AWG	2.26 Nm (20 lb-in)
	8 AWG	2.8 Nm (25 lb-in)
Neutral and ground	Large screw	5.1 Nm (45 lb-in)
	Small screw	3.4 Nm (32 lb-in)
Main lug	10-14 AWG	2.6 Nm (23 lb-in)
	10-4 AWG 3-2/0 AWG	2.3 Nm (20 lb-in)

Copper conductors only, rated min. 75°C.  
 Follow NEMA 70/NEC, or CSA C22.1 part 1, and all local codes.  
 For DC Breaker larger than 20A, use wire insulated for 90°C.  
 Based on 75°C ampacity.  
 Designed in California and New Zealand  
 Made in Mexico

For  
For



70





Whitney  
155 W. Clear Dr.  
Furness, Virginia  
Shaw, William  
Myron



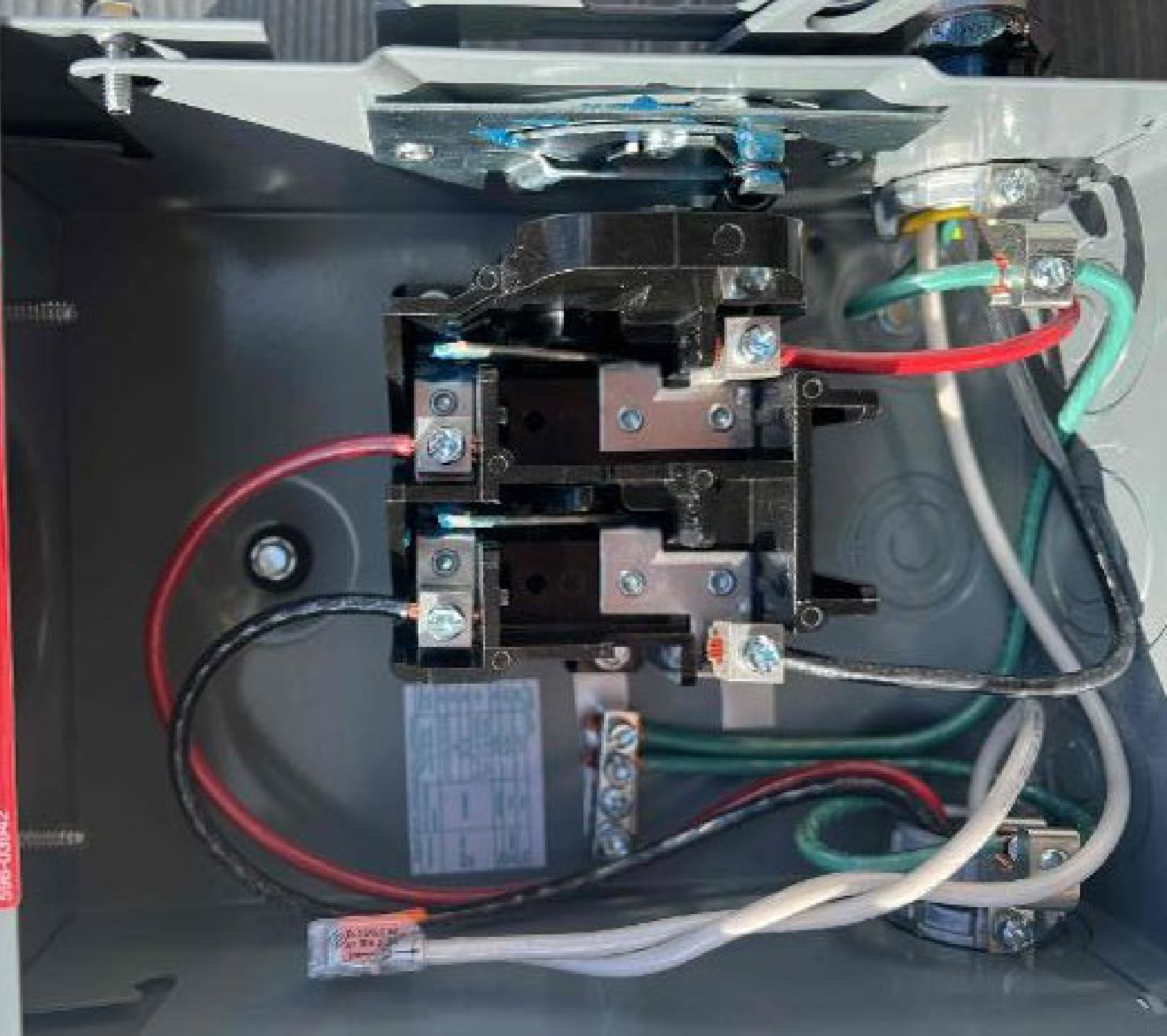
**PHOTOVOLTAIC AC DISCONNECT**

**MAXIMUM AC OPERATING CURRENT:**

**NOMINAL OPERATING AC VOLTAGE:**

5176-030942

14.52A  
240V





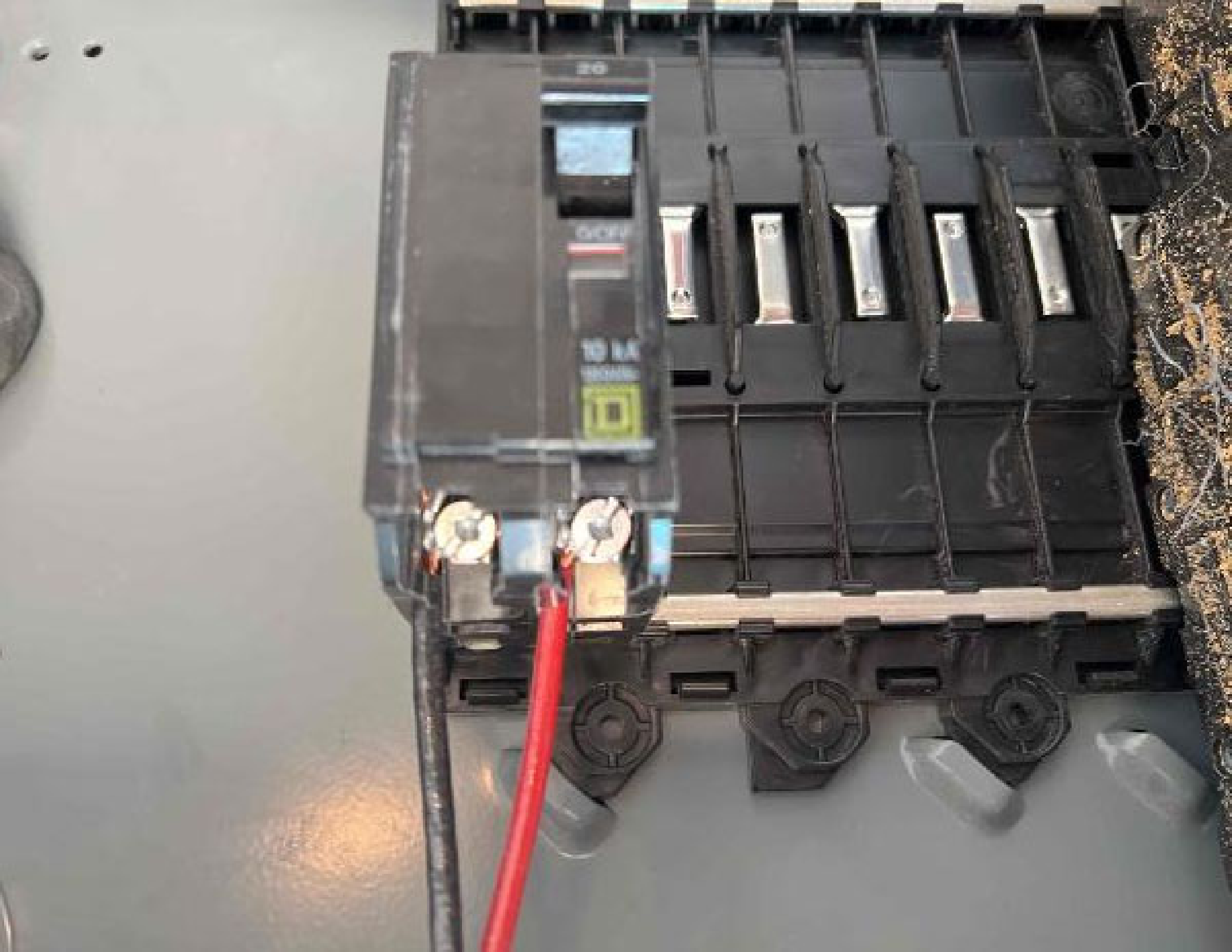
20

Q/OFF

10 kA

1000000









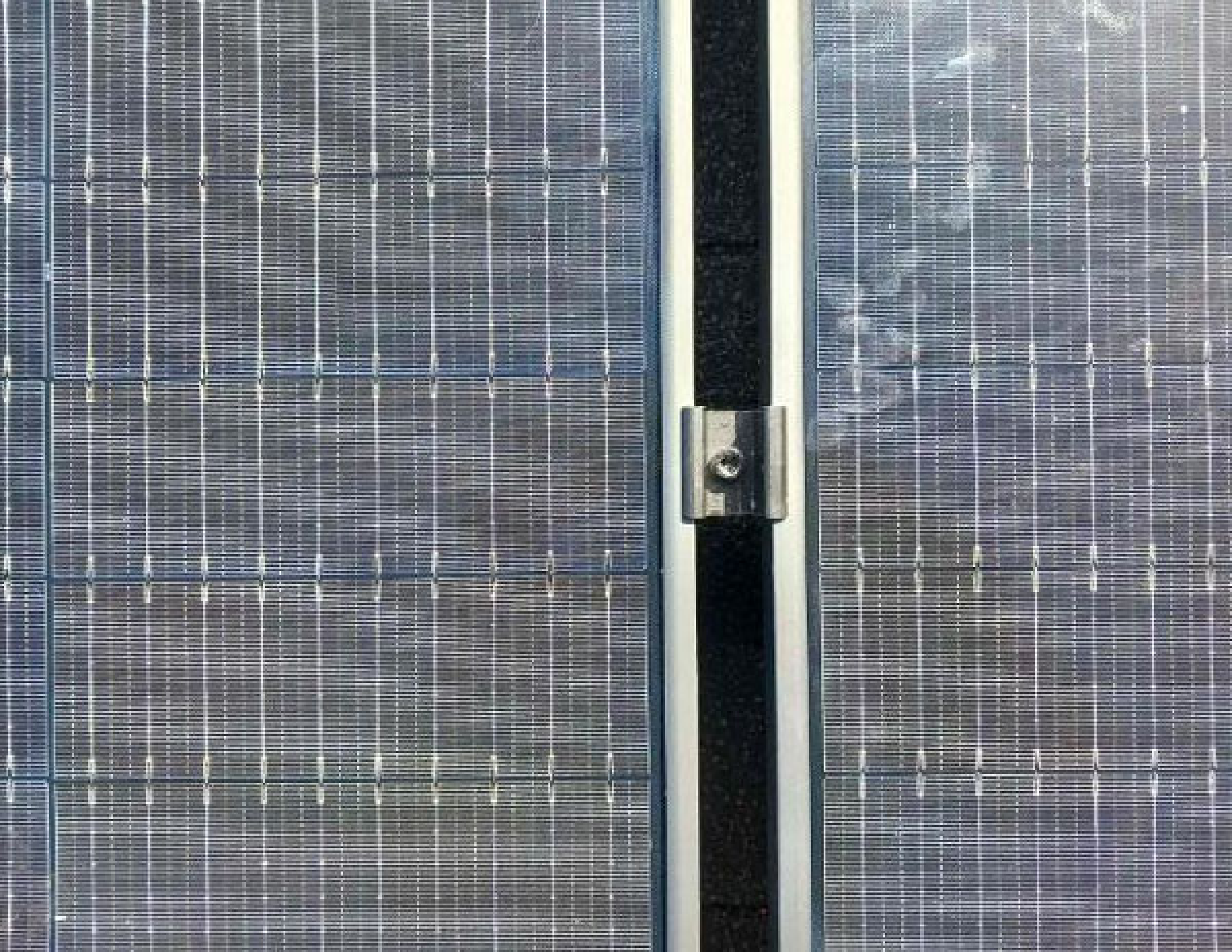
















PATENTS WWW.UNIBAC.COM/PATENTS  
CONFORMS TO UL 610 2103

0512022

UNIBAC SPM

UNIBAC UNIBAC UNIBAC







مكتب  
رقم  
تاريخ  
ملاحظات

Matthew Porter

ID # 643868

155 St Clair Dr

Fuquay Varina, NC 27526

RC3

Minerals  
LABORATORY

**Tina's**  
The Address

NAME	ADDRESS	CITY	STATE	ZIP

CE 0 2 8





WARNING  
DO NOT TOUCH  
OR MOVE  
WIRING  
OR EQUIPMENT  
HERE



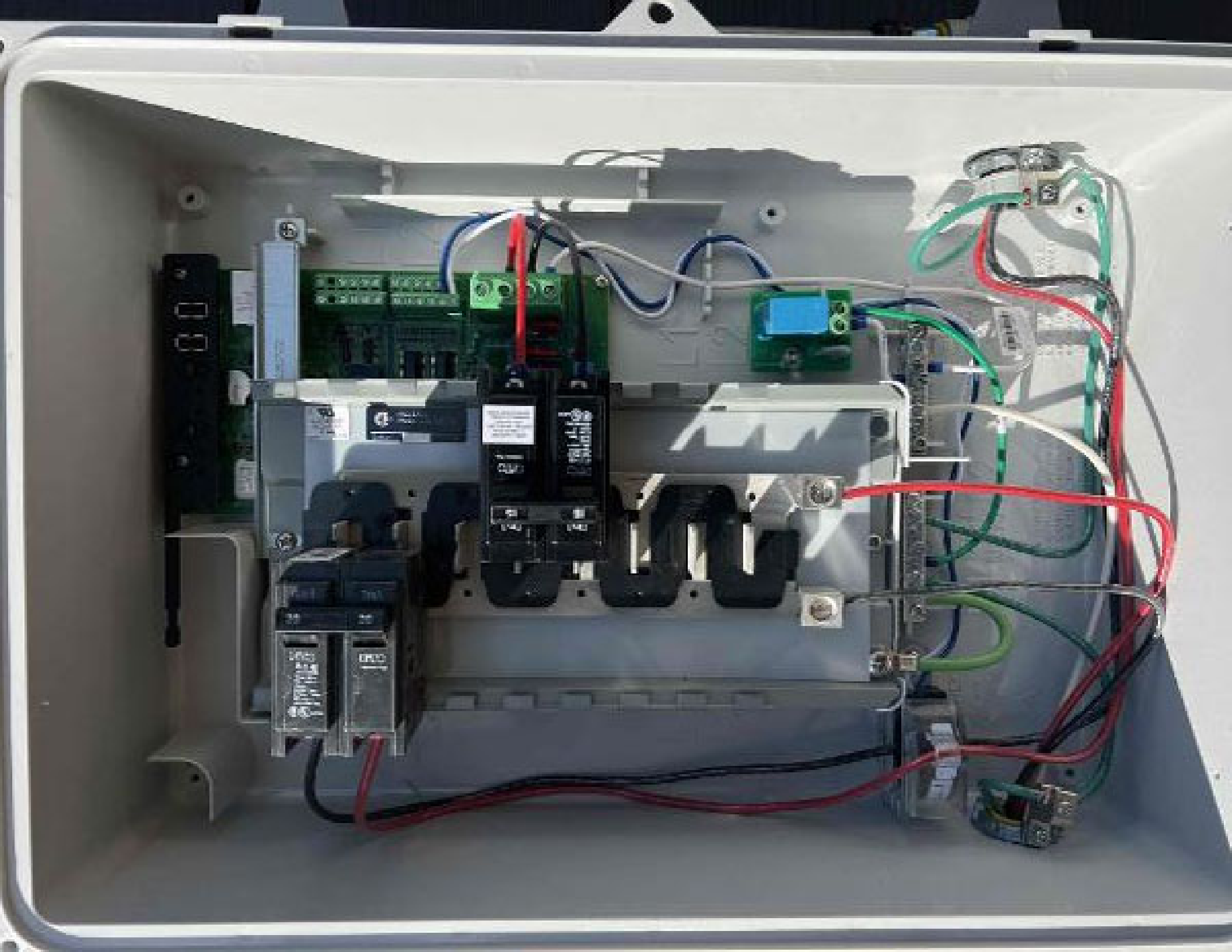




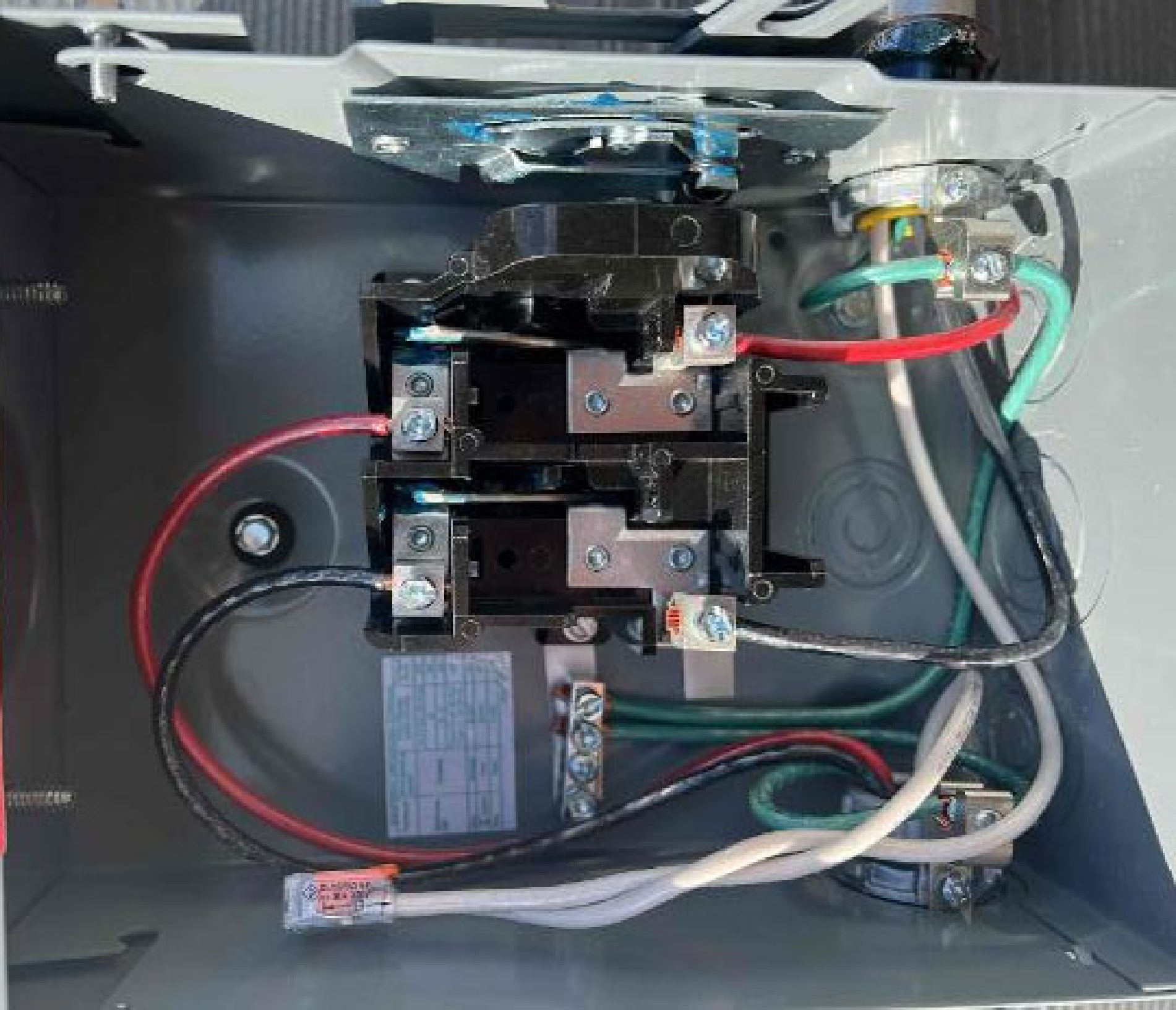


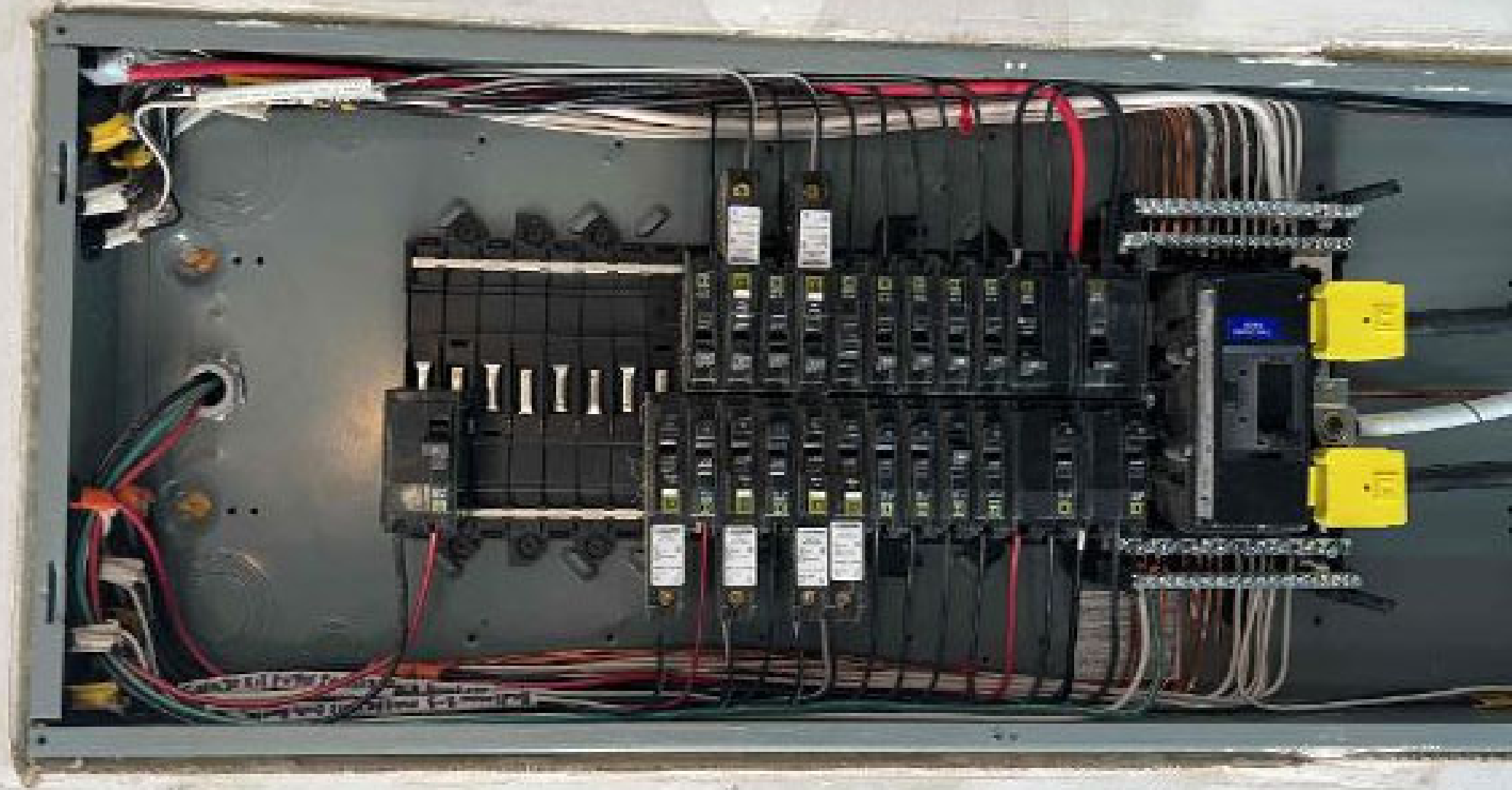






**PHOTO COPY**  
**MAXIMUM AC OPERATING CURRENT:**  
14.50A  
240V  
**NOMINAL OPERATING AC VOLTAGE:**  
550-030-02











**UNIRAC SFM INFINITY RACKING**  
FOR MOUNTING AND GROUNDING SOLAR SYSTEMS

UL 1703, UL 2703



164

640-00388-16  
250VAC 20A  
4791C 2202



