

OFF/ON
20
OFF/ON
20
OFF/ON
20
OFF/ON
20
OFF/ON
20

OFF/ON
15
OFF/ON
15

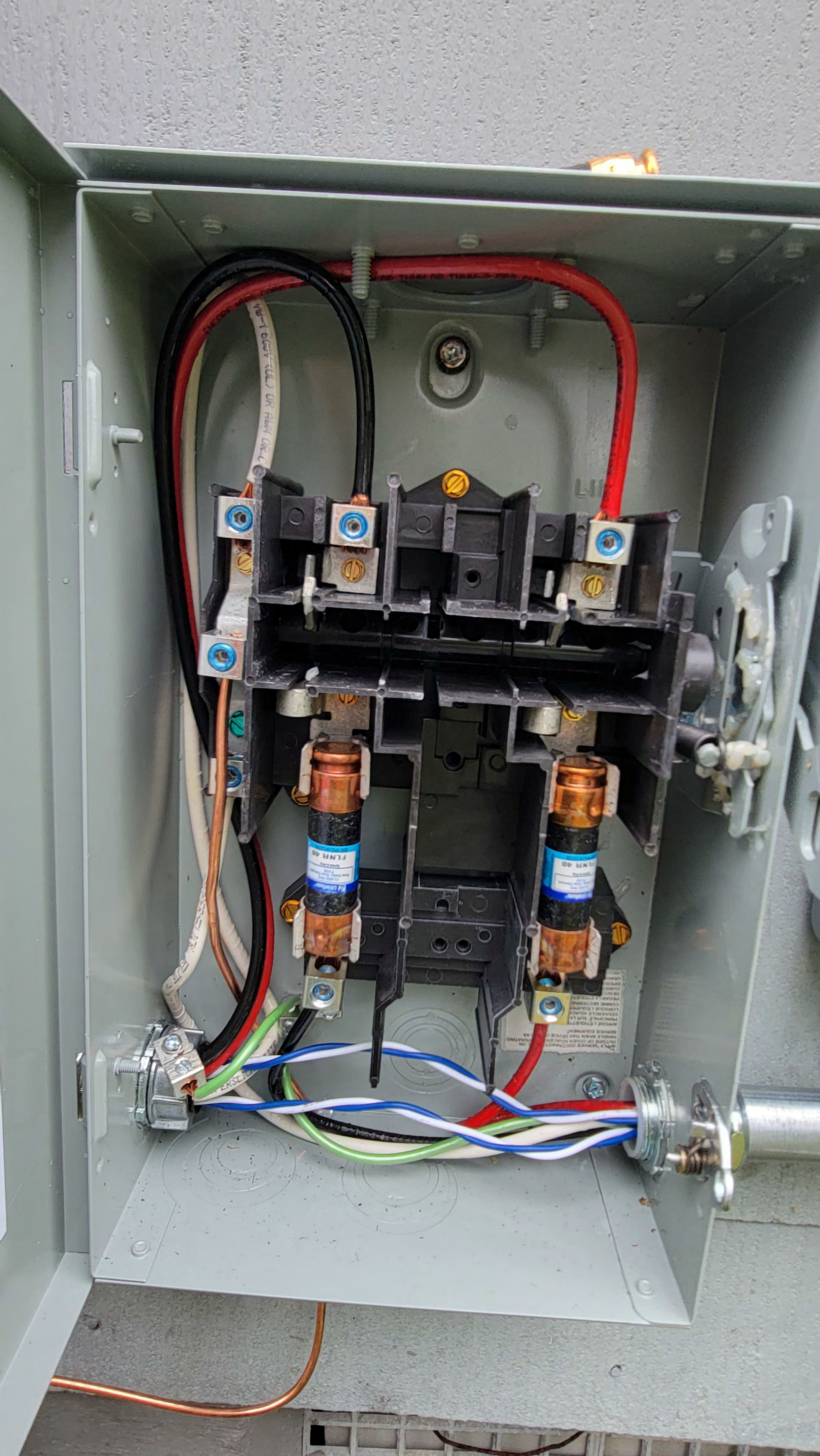
0537-02

11
12

ENCORE WIRE CO.
TYPE 100
REFERENCE IS POSSIBLE

ENCORE WIRE CO.
TYPE 100
REFERENCE IS POSSIBLE

ELECTRICAL SHOCK



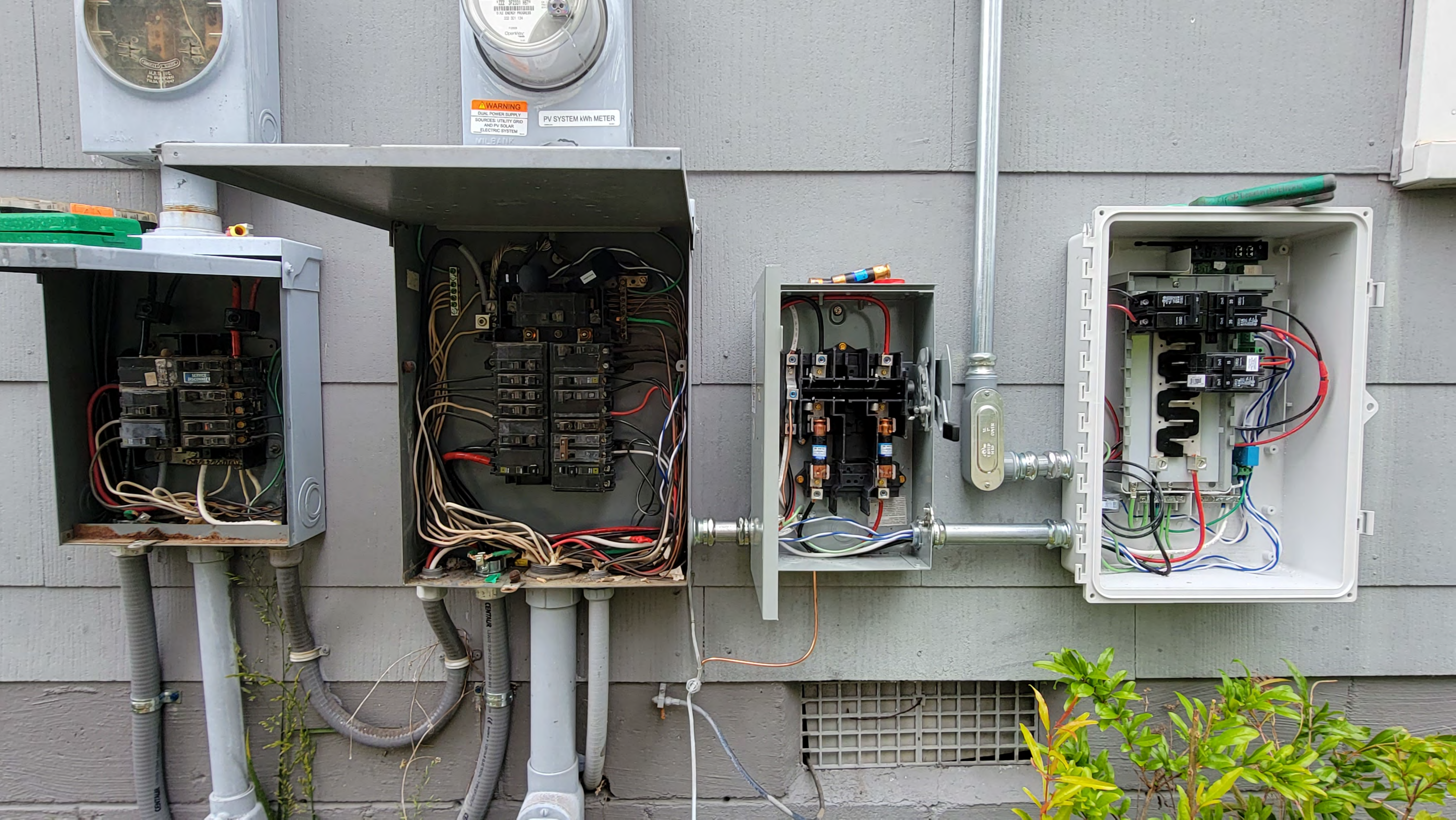
Vul-1 600V (UL) DR RHW DR-C

100% THRU TO TIER-2 PBA

FLNR 40

FLNR 40

1. ALWAYS DISCONNECT ON
LIFE OR COVER ALKALINE
BATTERY WHEN THIS DEVICE
SERVICES EQUIPMENT.
APPROVED BY IEC
PRINCIPAL SALES
CORPORATE SALES
CONSUMER SALES
COMMERCIAL SALES
REPAIR & SERVICE
CENTERS

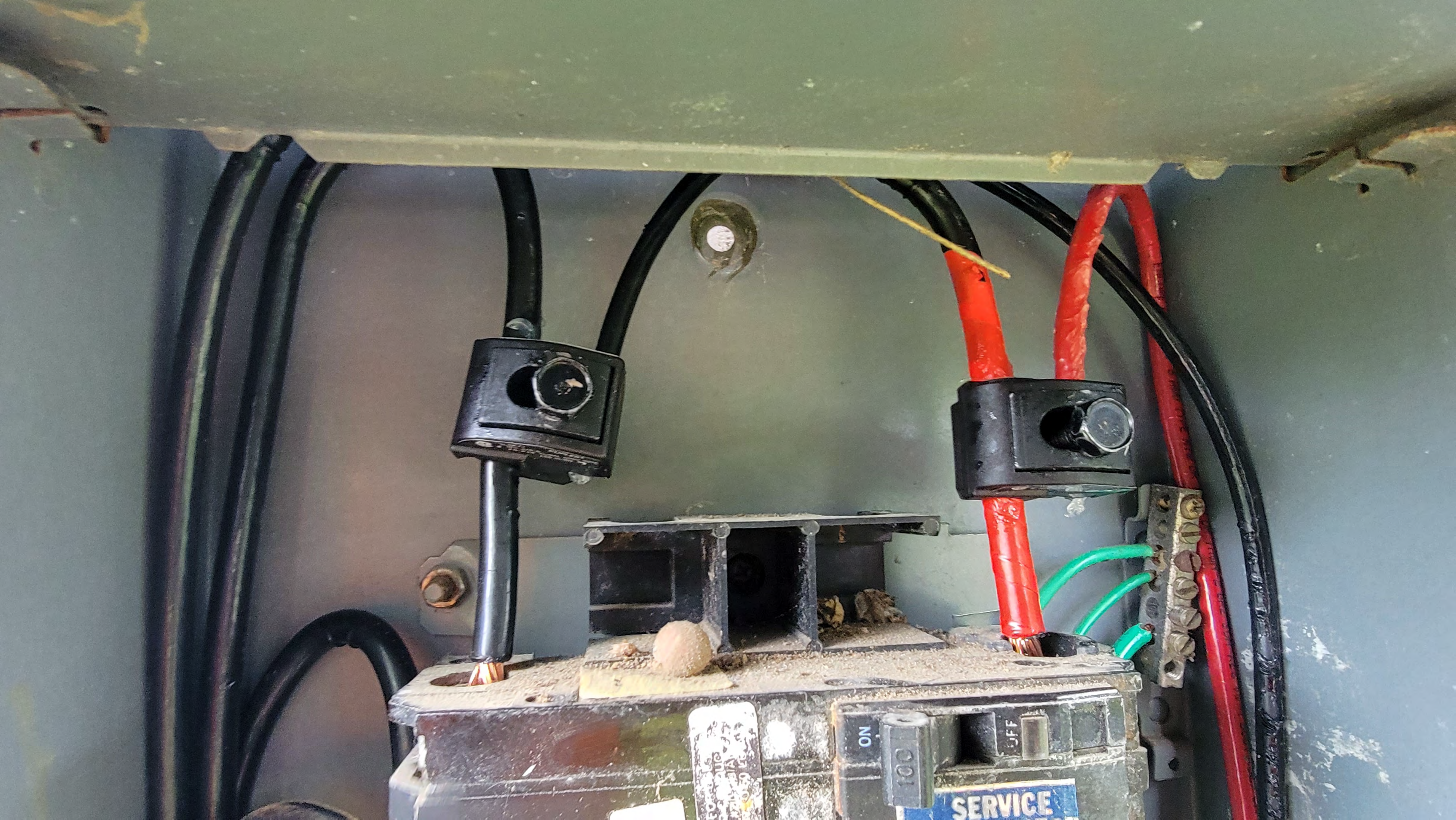


WARNING
DUAL POWER SUPPLY
SOURCES: UTILITY GRID
AND PV SOLAR
ELECTRIC SYSTEM

PV SYSTEM kWh METER

11
10/18

0.0

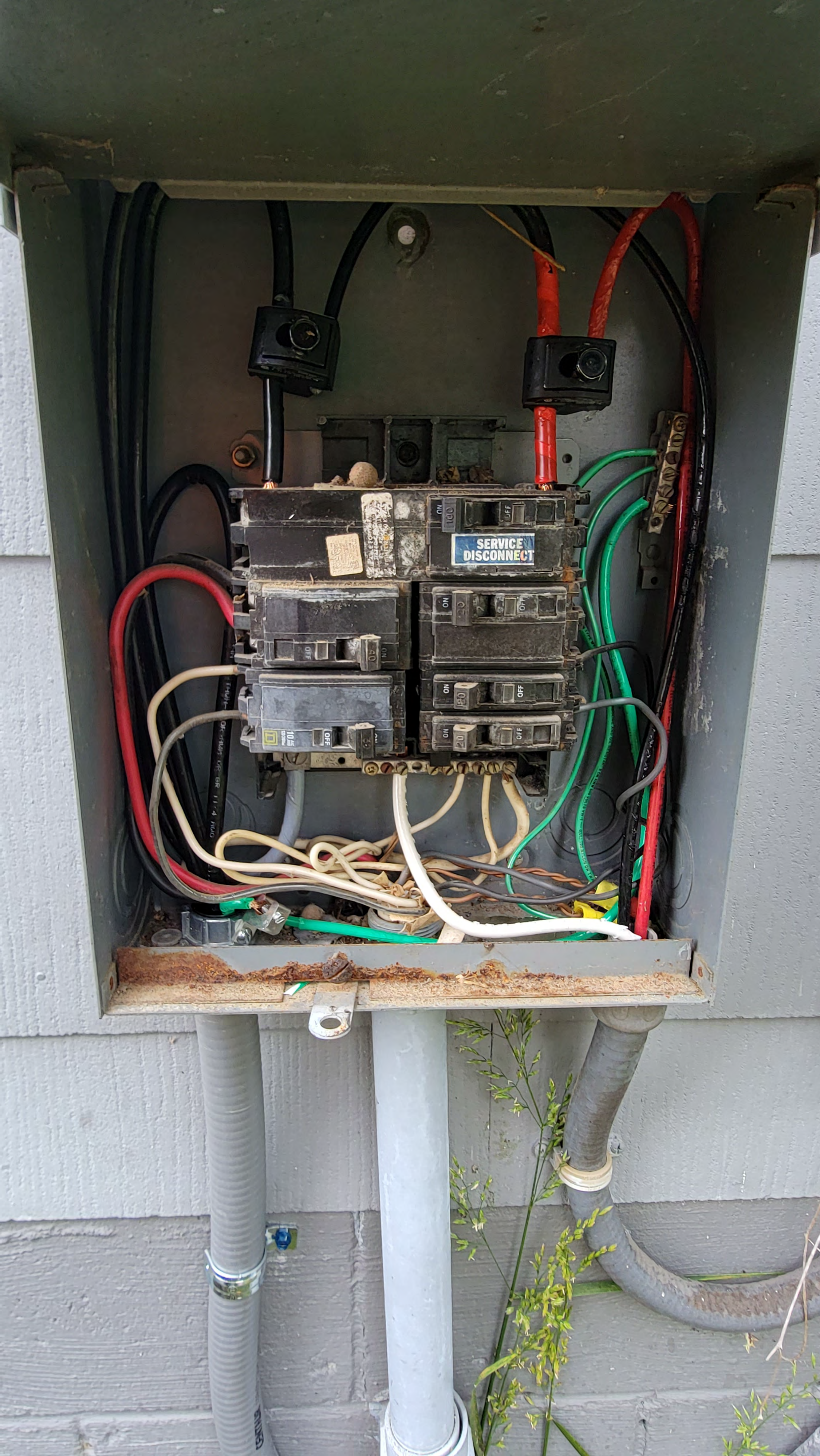


100

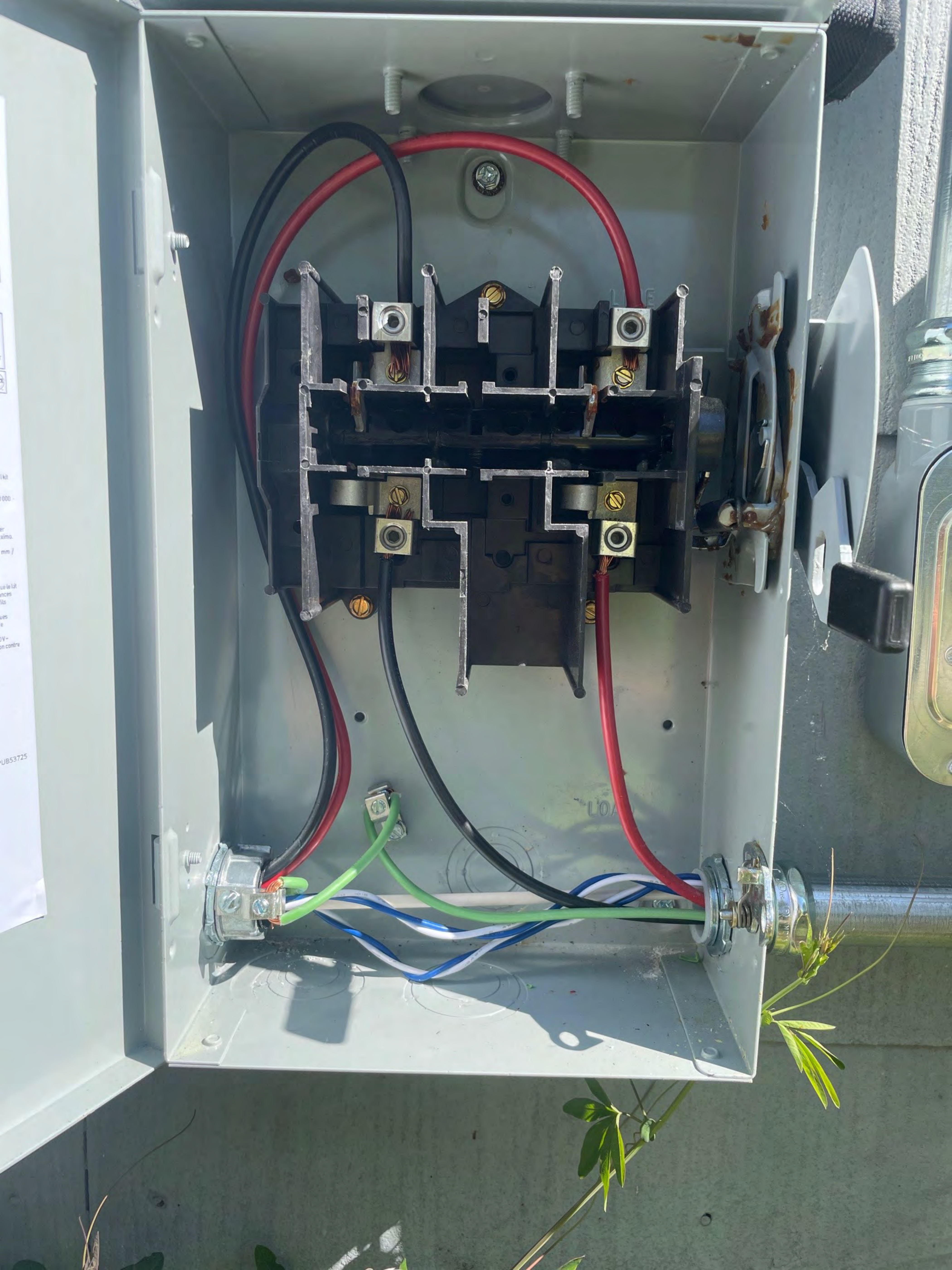
ON

OFF

SERVICE







MAIN



Water Heater
DRYER

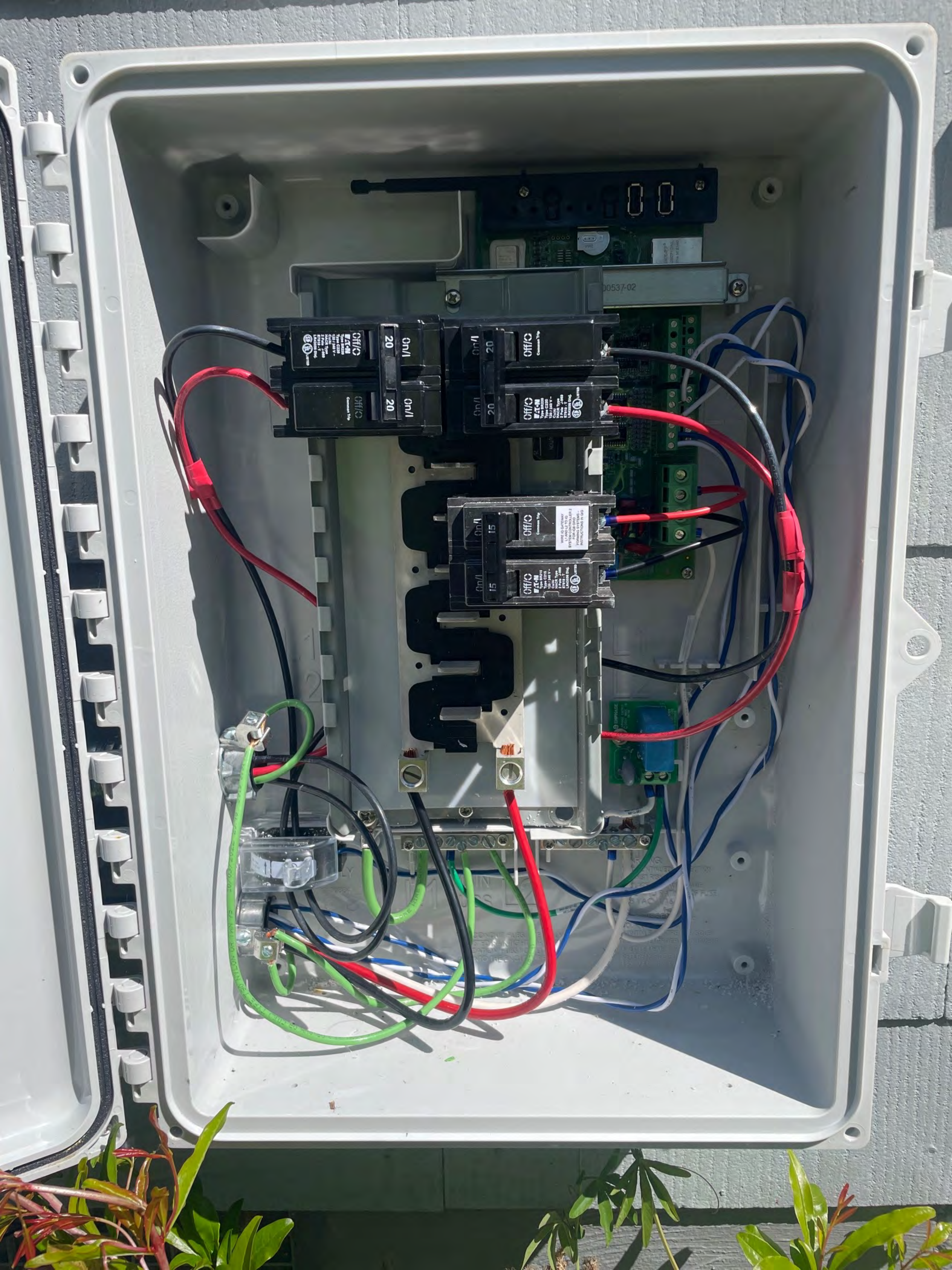
Kitchen A/C
GAS
PUMP

WARNING
SOLAR ELECTRIC BREAKER IS BACKFED

SOLAR PV BREAKER
BREAKER IS BACKFED
DO NOT RELOCATE







MAIN



Hand Fan
Water Heater →
DRYER

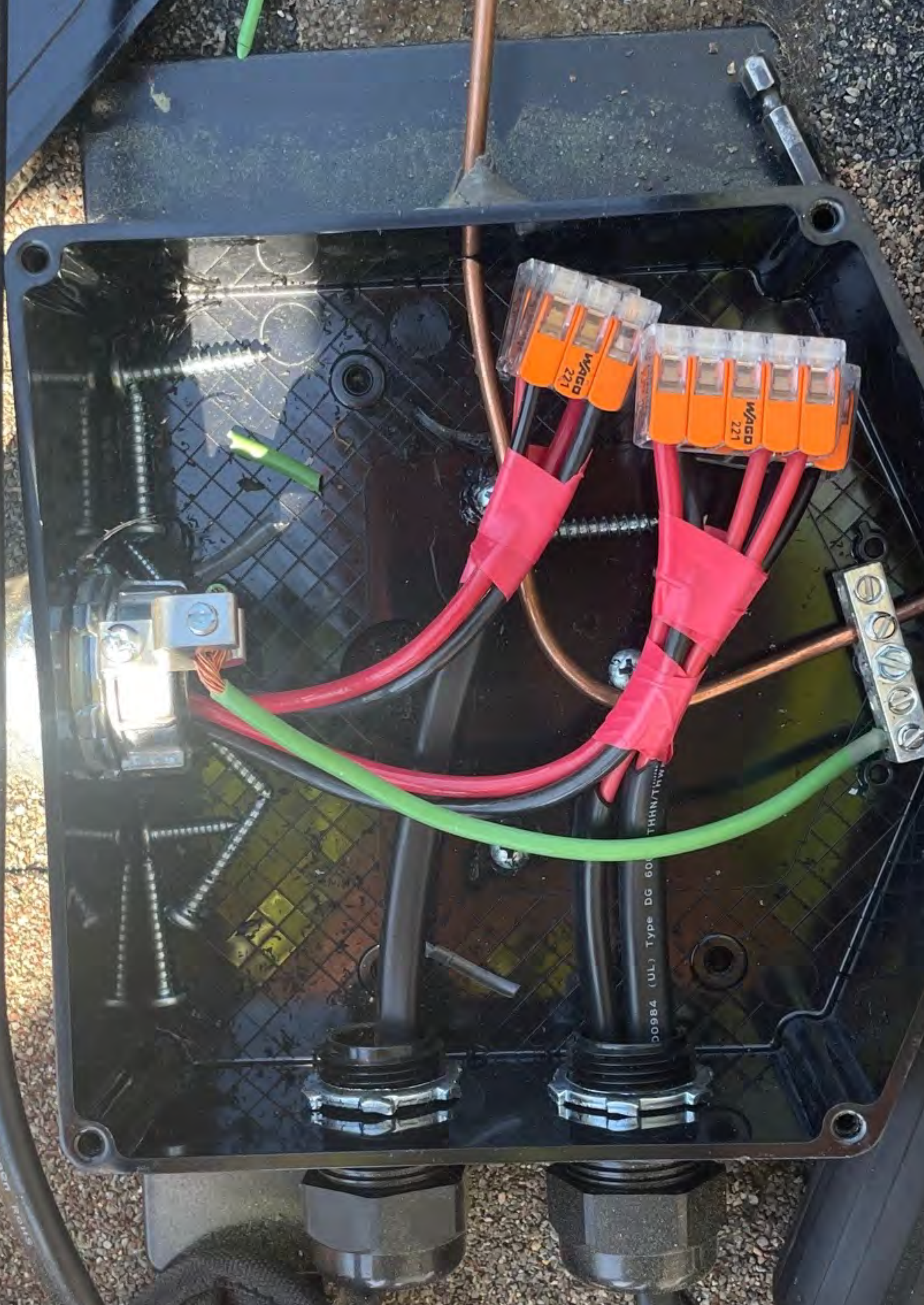
Kitchen A/C
GAS
PUMP

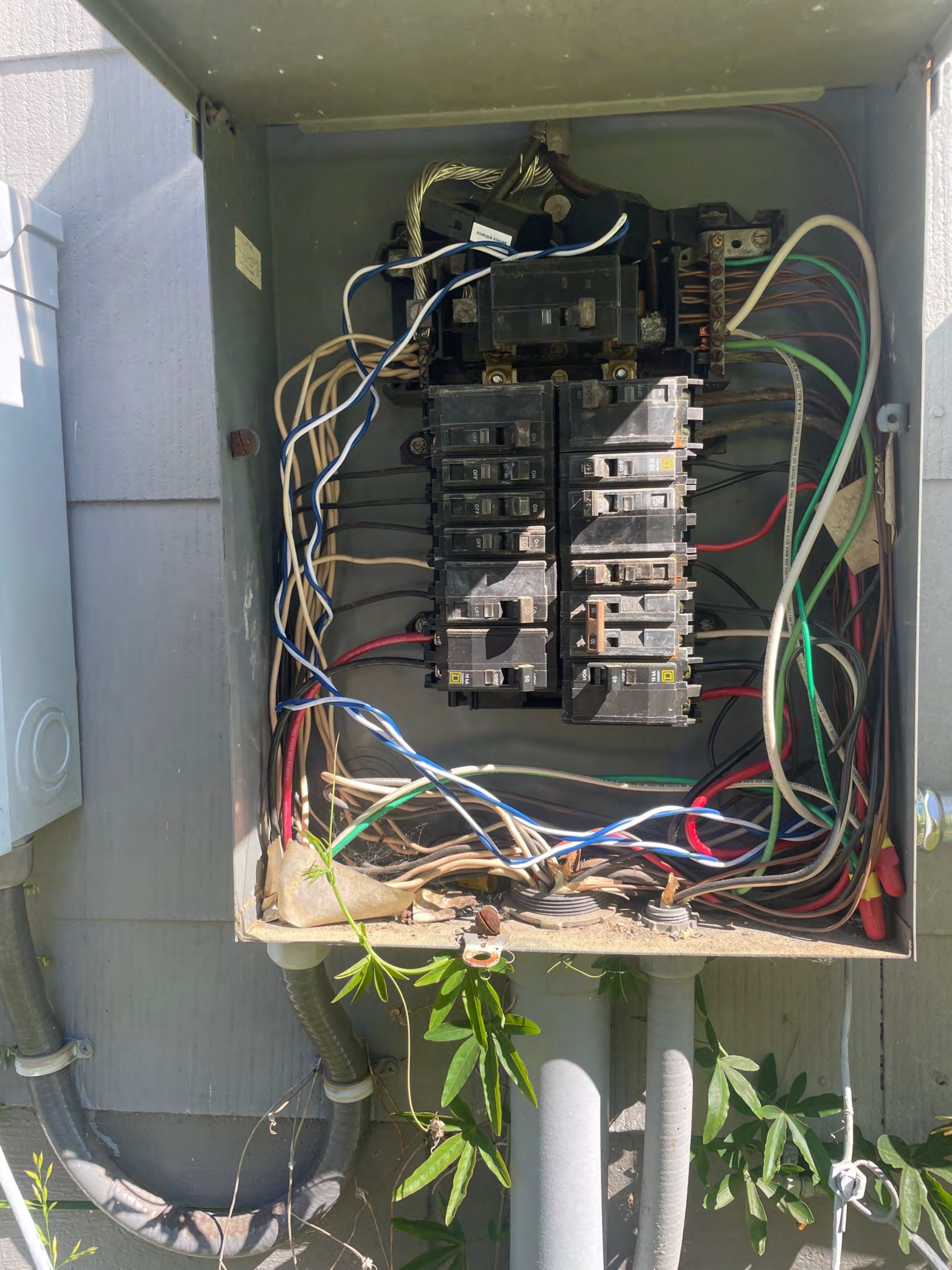
WARNING
SOLAR ELECTRIC BREAKER IS BACKFED

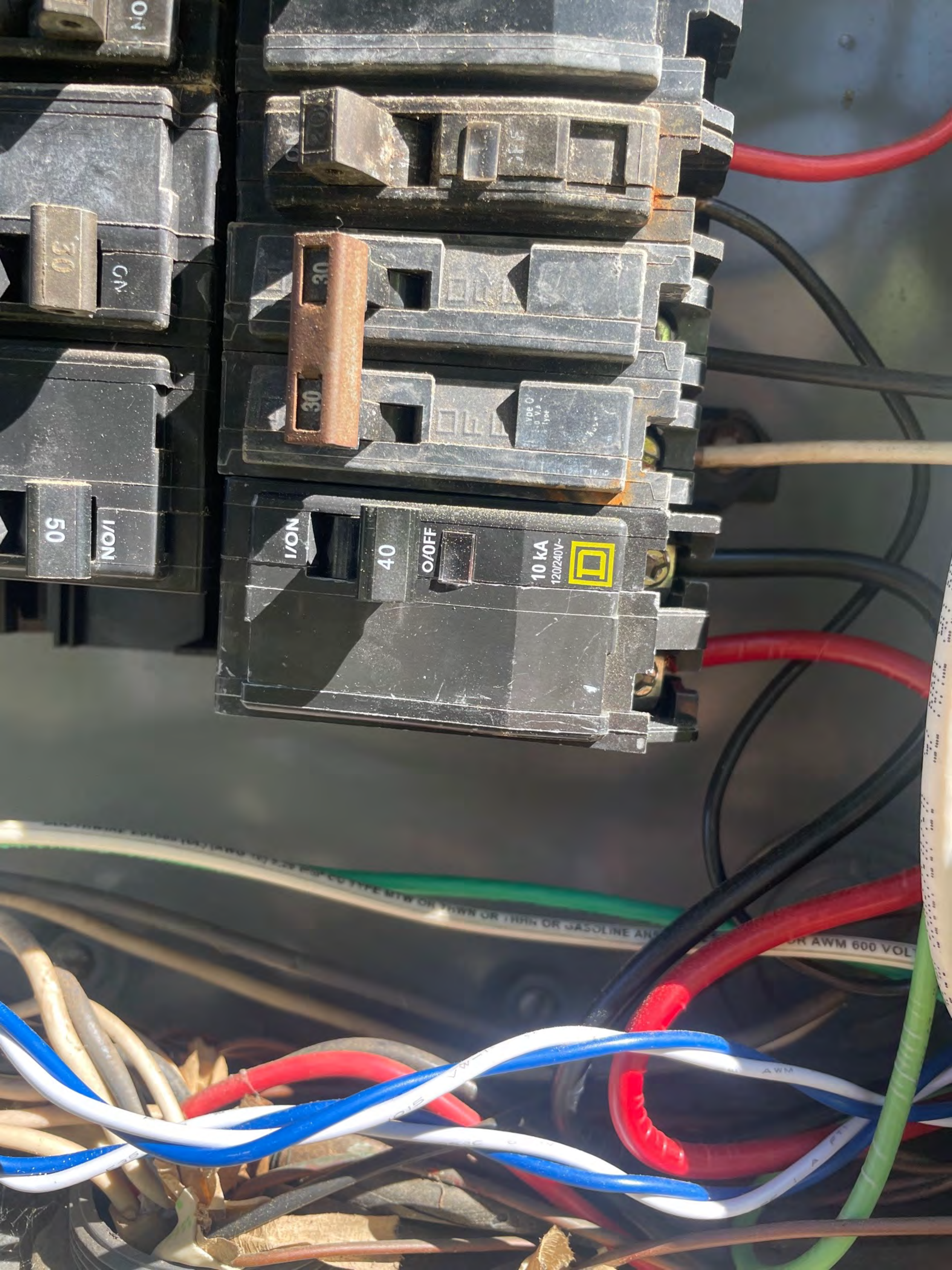


WARNING!
READ THE INSTALLATION MANUAL
BEFORE FOR ALL SAFETY PRECAUTIONS.
FOR DETAILS GO TO STANDARDS
MFR61 E500984 (UL Type DG 600V THHN/THWN-2 90C dry/wet 2/C 12AWG -40C oil sea 1 sunlight resistant FT-4 SIMMON ROVIS

MFR61 E500984 (UL Type DG 600V THHN/THWN-2 90C dry/wet 2/C 12AWG -40C oil sea 1 sunlight resistant FT-4 SIMMON ROVIS







NO

CN

30

50

NO/ON

20

30

30

I/ON

40

O/OFF

10 kA
120/240V~



TYPE C
10 V.A.
Type

TYPE MTW OR THHN OR THHN OR GASOLINE AND

OR AWM 600 VOLT

AWM



switch
é à usage général
ad de servicio general

de
complètes à l'intérieur
a de capacidades en el

inside
l'intérieur
nales en el interior

qué aux É.-U. / Hecho en E.U.A.

⚠ DANGER
**HAZARDOUS VOLTAGE. WILL CAUSE
 SERIOUS INJURY OR DEATH.**
 Do not operate switch with cover open.
 Turn OFF power ahead of switch before doing any work.
 Replace all parts. Close cover before turning
 switch ON.

**⚠ DANGER DANGEREUSE. PEUT CAUSER
 BLESSURES GRAVES OU LA MORT.**
 Ne jamais manœuvrer l'interrupteur lorsque le couvercle
 est ouvert.
 Coupez l'alimentation en amont de l'interrupteur avant
 toute intervention. Remplacez les pièces. Fermez le
 couvercle avant de remettre sous tension.

⚠ PELIGRO
**¡TENSIÓN PELIGROSA. PUEDE CAUSAR
 LESIONES SEVERAS O LA MUERTE.**
 Nunca opere el interruptor con la cubierta abierta.
 Desconecte la alimentación del interruptor antes de
 intervenir. Reemplace todas las partes.
 Cierre la cubierta antes de energizar el interruptor.

AC DISCONNECT

pvlabs.com

05-323

AC DISCONNECT

PHOTOVOLTAIC SYSTEM POWER SOURCE

RATED AC
OUTPUT CURRENT **27.83** AMPS

NOMINAL OPERATING
AC VOLTAGE **240** VOLTS

pvlabs.com

03-306



WARNING

ELECTRIC SHOCK HAZARD

TERMINALS ON THE LINE AND LOAD SIDES MAY BE ENERGIZED IN THE OPEN POSITION

pvlabs.com

05-215



ON
|



Handwritten notes on a piece of tape on the left side of the panel.

Handwritten notes on a piece of tape on the left side of the panel.

Handwritten notes on a piece of tape on the left side of the panel, including "HH20" and an arrow pointing right.

Handwritten notes on a piece of tape at the top center of the panel.

Handwritten notes on a piece of tape below the top center tape.

SERVICE DISCONNECT

Handwritten notes on the right side of the panel.

Handwritten notes on a wooden bar at the bottom of the panel.









MAIN



Handwritten text on the left side of the panel, possibly indicating a location or date.

Handwritten text on the right side of the panel, possibly indicating a location or date.





640-00387-15
250VAC 20A
+78°C 223A









WARNING
DUAL POWER SUPPLY
SOURCES: UTILITY GRID
AND PV SOLAR
ELECTRIC SYSTEM

PV SYSTEM kWh METER











WARNING


PHOTOVOLTAGIC SYSTEM
COMMON PANEL
DO NOT ADD LOADS

WARNING

POWER SOURCE
OUTPUT CURRENT
DO NOT RELEASE THIS
CUMULATIVE DEVICE

WARNING

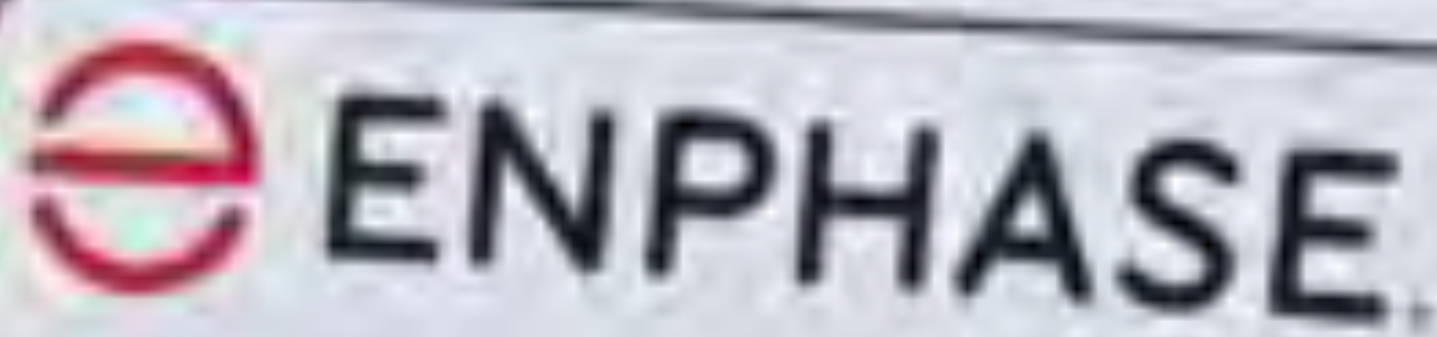
THIS EQUIPMENT HAS BY MULTIPLE
SOURCES. TOTAL RATING OF ALL
PARALLEL DEVICES, EXCLUDING
MAX SUPPLY CURRENT
DEVICE, SHALL NOT EXCEED
RATING OF BUSBAR.

 ENPHASE





- • • • Flashing green when software upgrade is in progress
- • • • Flashing amber when IQ Gateway is booting up



IQ Combiner 4

Photovoltaic
Combiner Box
X-IQ-AM1-240-4



Electrical ratings

Voltage 240VAC, 60Hz
 DG Breakers 80A MAX (combined)
 DG inputs 64A MAX (combined)
 Output 65A MAX, 90A MAX feeder OCPD
 Temperature 46°C MAX ambient
 For DG breaker, use only Eaton BR series.

202246083143

S/N 202246083143

P/N:

883-00356 23

**Dedicated solar and DG Combiner Box - do not add loads
 10 AMP or 15 AMP IQ Gateway Breaker not used for backfeed**

Connection		Wire sizes	Torque
DG Breaker (1, 2, 3, 4)		14-10 AWG	2.2 Nm (20 lb-in)
		8 AWG	2.8 Nm (25 lb-in)
		6-4 AWG	3.0 Nm (27 lb-in)
60A Circuit Breaker only		4-1/0 AWG	5.0 Nm (45 lb-in)
IQ Gateway Breaker		14-10 AWG	2.26 Nm (20 lb-in)
Neutral and ground	Large screw	2-1/0 AWG 14-3 AWG	5.6 Nm (45 lb-in) 5.1 Nm (45 lb-in)
	Small screw	6 AWG 8 AWG 10-14 AWG	3.0 Nm (32 lb-in) 2.6 Nm (23 lb-in) 2.3 Nm (20 lb-in)
Main bus		10-4 AWG 8-2/0 AWG	5.0 Nm (45 lb-in) 5.6 Nm (50 lb-in)

Copper conductors only, rated max. 75°C
 Follow NFPA 70 (NEC), or CSA C22.1 part 1, and all local codes.
 For DG Breakers lesser than 20A, use wire insulated for 90°C
 based on 75°C ampacity.

Designed in California and New Zealand
 Made in Mexico



OWN POWER SUPPLY
SOURCE'S UTILITY GRID
AND PV SOLAR
ELECTRIC SYSTEM

PV SYSTEM kWh METER

MEB5112

 **WARNING**

TURN OFF PHOTOVOLTAIC
AC DISCONNECT PRIOR TO
WORKING INSIDE PANEL

 **WARNING**

ELECTRIC SHOCK HAZARD
TERMINALS ON THE LINE AND
LOAD SIDES MAY BE ENERGIZED
IN THE OPEN POSITION

**SOLAR PV SYSTEM
EQUIPPED WITH
RAPID SHUTDOWN**



TURN RAPID SHUTDOWN SWITCH TO
THE "OFF" POSITION TO SHUT DOWN
PV SYSTEM AND REDUCE
SHOCK HAZARD IN THE ARRAY



EATON

AC DISCONNECT

AC DISCONNECT

PHOTOVOLTAGE SYSTEM
POWER SOURCE

RAISED AC
OUTPUT CURRENT AMPS

NOMINAL OPERATING
AC VOLTAGE VOLTS

WARNING

ELECTRIC SHOCK HAZARD
TERMINALS ON THE LINE AND
LOAD SIDES MAY BE ENERGIZED
IN THE OPEN POSITION

**RAPID SHUTDOWN
SWITCH FOR
SOLAR PV SYSTEM**













482214044 895-2184
482214045 895-2184

482214046 895-2184

482214047 895-2184

482214048 895-2184

482214049 895-2184

482214050 895-2184

482214051 895-2184

482214052 895-2184

482214053 895-2184

482214054 895-2184

482214055 895-2184
482214056 895-2184
482214057 895-2184
482214058 895-2184

482214059 895-2184
482214060 895-2184
482214061 895-2184
482214062 895-2184

482214063 895-2184
482214064 895-2184
482214065 895-2184
482214066 895-2184

























