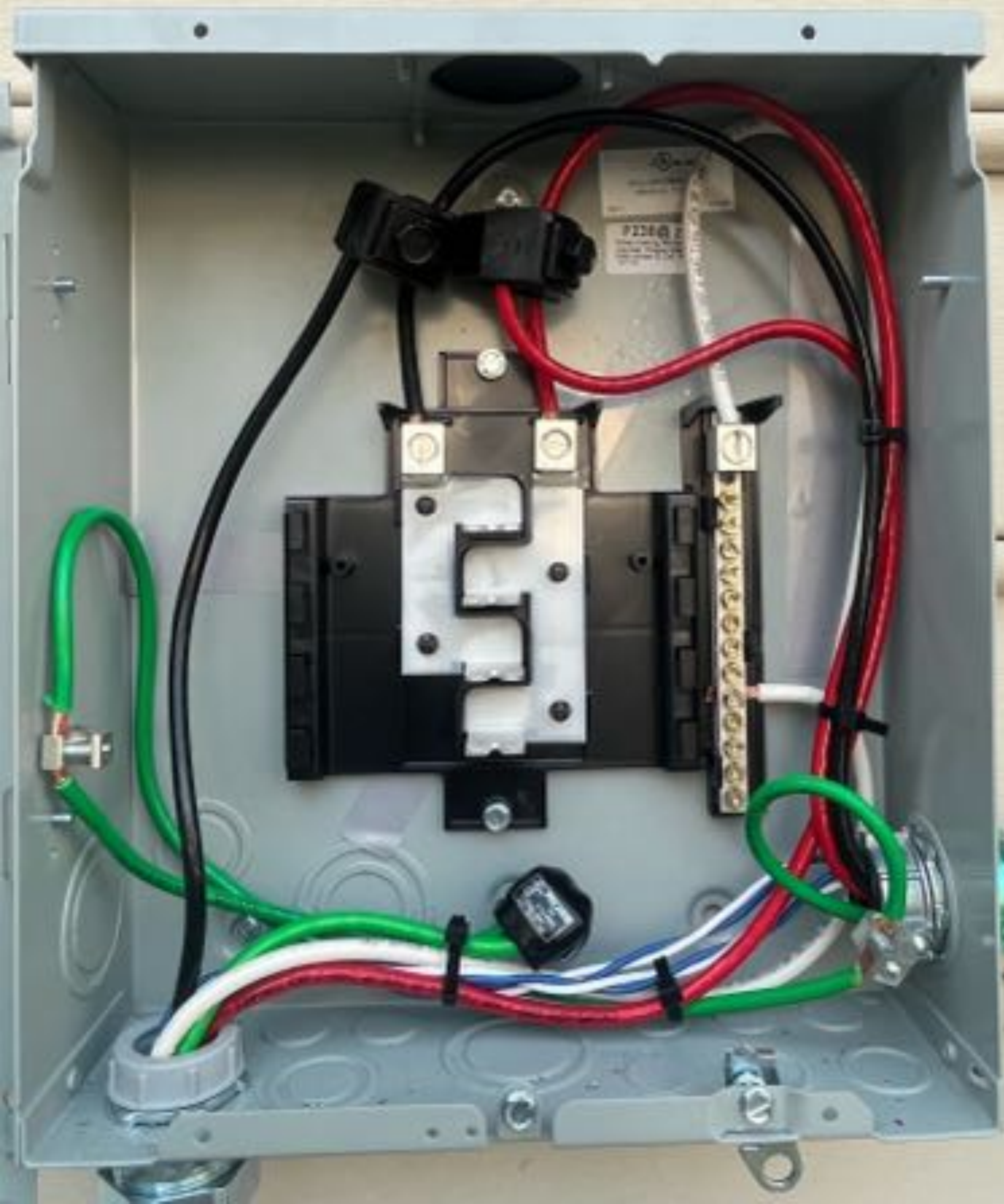






ENPHASE





5

6

7

⚠ WARNING

SOLAR ELECTRIC
CIRCUIT BREAKER
IS BACKFED

PHOTOVOLTAIC
SOLAR BREAKER

DO NOT RELOCATE THIS
OVERCURRENT DEVICE

SUB-PANEL A

SUB-PANEL A

TODAS LAS RECOMENDACIONES DE SEGURIDAD DEBEN SER LEIDAS Y ENTENDIDAS ANTES DE EMPEZAR EL TRABAJO. LEER EL MANUAL DEL PRODUCTO ANTES DE EMPEZAR EL TRABAJO.

ELABORADO EN EL AÑO 2014

PARA INSTALACION DE ACCIONAMIENTO

CLASIFICACION DE CORRIENTE NOMINAL DE 150/250 A

CONEXION DE SECCION DE TRANSFORMACION

PERIODO DE MANTENIMIENTO EN LA CLASIFICACION DE CORRIENTE NOMINAL DE 150/250 A

LOS INTERRUPTORES DE CORRIENTE NOMINAL DE 150/250 A DEBEN SER INSTALADOS EN LA CLASIFICACION DE CORRIENTE NOMINAL DE 150/250 A

ALERTE LAS EMERGENCIAS EN SU MOMENTO

RESERVADOS TODOS LOS DERECHOS







000248CE19
FCC ID: B21041 4100-001 1000L-001

242c nEt

CL200 240V 3W TYPE C2N 30TA 1.0Ch

ZZZ 2F1493 H57



DUKE ENERGY PROGRESS

332 291 176

OpenWay

CA 0.1
FREQ
60Hz



30-1000, 4





EATON

BR816L125RP

TYPE BR816L125RP - RAINPROOF
GARRITY TUBE IN A POLYMER COVER

MANUFACTURED BY
EATON CORPORATION
1000 EAST 17TH AVENUE
COLUMBUS, OHIO 43260-1000
EATON IS AN EQUAL OPPORTUNITY EMPLOYER

Part No.	Description	Quantity
BR816L125RP	TYPE BR816L125RP - RAINPROOF GARRITY TUBE IN A POLYMER COVER	1

INSTALLATION INSTRUCTIONS
1. The garrity tube should be installed in a vertical position.
2. The garrity tube should be installed in a location where it will not be subjected to excessive vibration or shock.
3. The garrity tube should be installed in a location where it will not be subjected to excessive heat or cold.
4. The garrity tube should be installed in a location where it will not be subjected to excessive moisture or humidity.
5. The garrity tube should be installed in a location where it will not be subjected to excessive dust or dirt.
6. The garrity tube should be installed in a location where it will not be subjected to excessive salt or other corrosive materials.
7. The garrity tube should be installed in a location where it will not be subjected to excessive mechanical stress or strain.
8. The garrity tube should be installed in a location where it will not be subjected to excessive electrical stress or strain.
9. The garrity tube should be installed in a location where it will not be subjected to excessive electromagnetic interference (EMI).
10. The garrity tube should be installed in a location where it will not be subjected to excessive radio frequency interference (RFI).
11. The garrity tube should be installed in a location where it will not be subjected to excessive static electricity.
12. The garrity tube should be installed in a location where it will not be subjected to excessive lightning strikes.
13. The garrity tube should be installed in a location where it will not be subjected to excessive fire or explosion.
14. The garrity tube should be installed in a location where it will not be subjected to excessive theft or vandalism.
15. The garrity tube should be installed in a location where it will not be subjected to excessive environmental damage.

Part No.	Description	Quantity
BR816L125RP	TYPE BR816L125RP - RAINPROOF GARRITY TUBE IN A POLYMER COVER	1



WARNING: This device is not to be used in hazardous locations.
CAUTION: Do not touch the internal components of the device.
NOTE: The device is designed for use in a vertical position.
REVISIONS:
REV. 1.0 - Initial Release
REV. 1.1 - Updated Installation Instructions
REV. 1.2 - Updated Safety Warnings



EATON

General Duty Safety Switch
Interrupteur de sécurité à usage général
Interruptor de seguridad de servicio general

W.A. 34714-0104

Complete listing inside
Liste complète des produits à l'intérieur
Información completa de especificación en el interior

Further instructions inside
Autres instructions à l'intérieur
Instrucciones adicionales en el interior

Web site: www.eaton.com

⚠ DANGER

WARNING: This switch is designed to disconnect power from a photovoltaic system. It is not designed to be used as a general purpose switch. Do not use this switch for any other purpose.

⚠ PELIGRO

ADVERTENCIA: Este interruptor está diseñado para desconectar la energía de un sistema fotovoltaico. No está diseñado para ser utilizado como un interruptor de propósito general. No lo utilice para ningún otro propósito.



AC DISCONNECT
PHOTOVOLTAIC SYSTEM
POWER SOURCE

RATED AC OUTPUT CURRENT **51.43** AMPS
NOMINAL OPERATING AC VOLTAGE **240** VOLTS

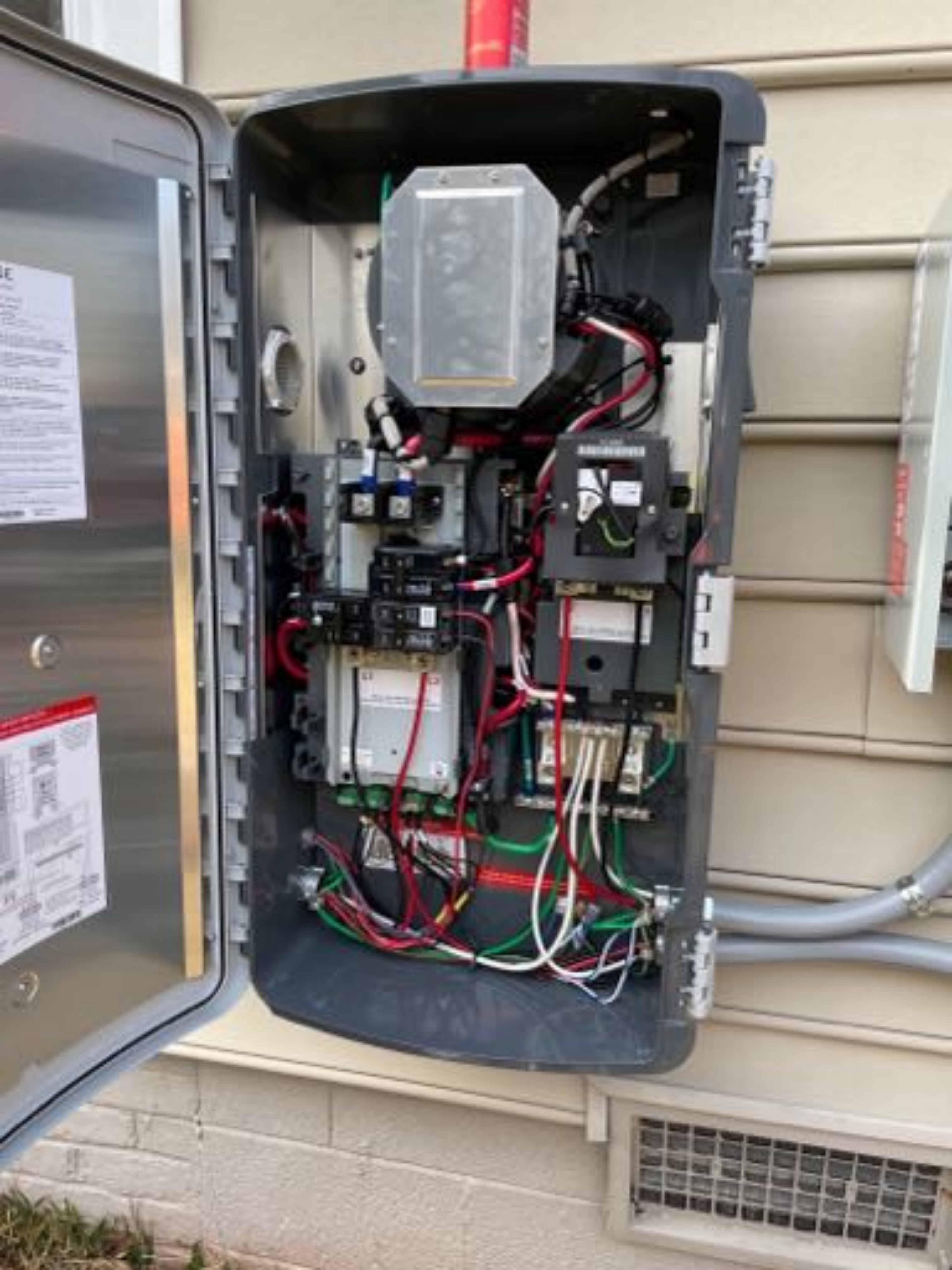
RAPID SHUTDOWN
SWITCH FOR
SOLAR PV SYSTEM

ON

OFF











Explosion-Proof Series
Lutron

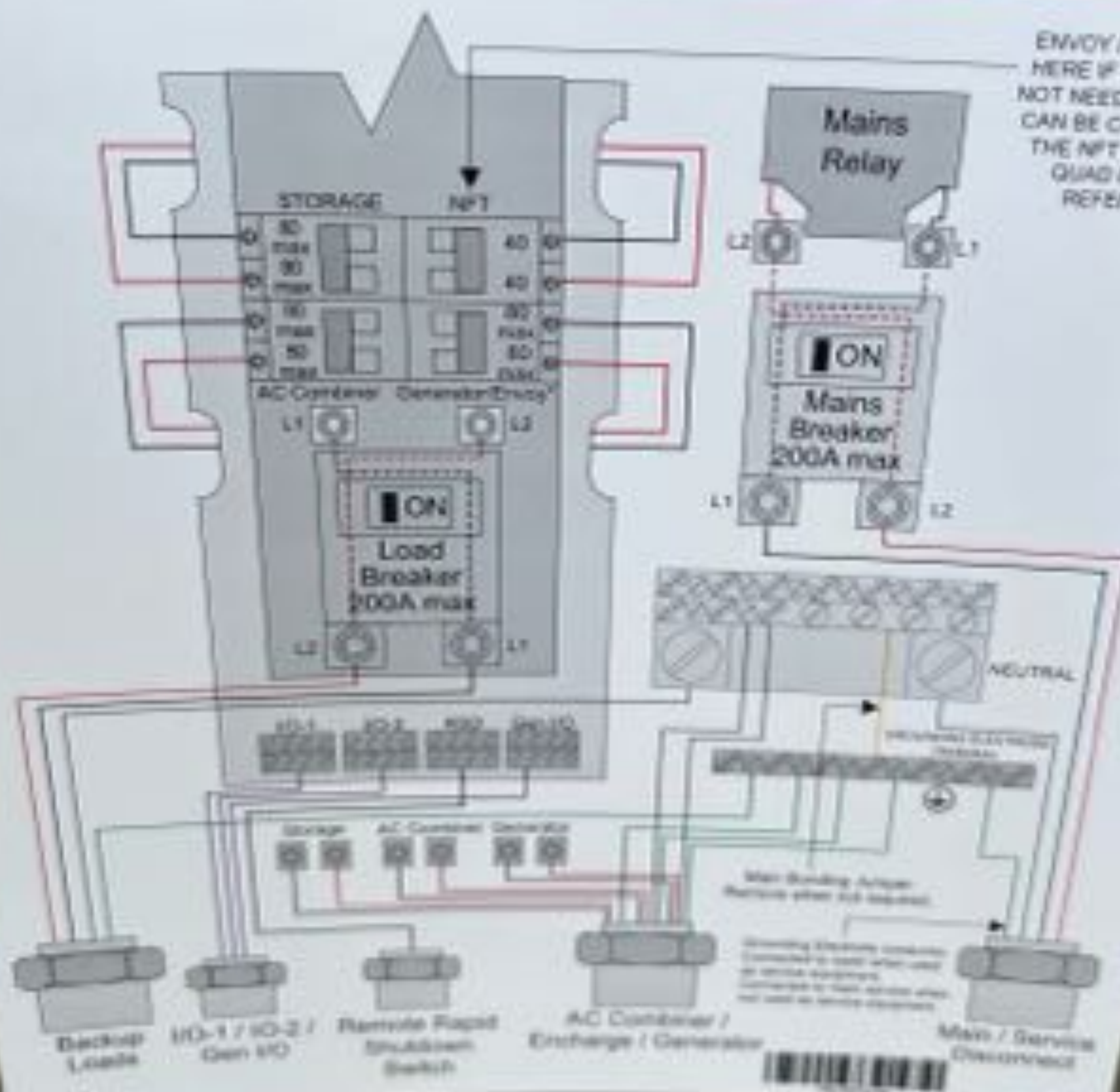








**DO NOT WIRE WHEN ENERGIZED —
SAFETY HAZARD AND RISK OF EQUIPMENT DAMAGE.**





EX-402
[Illegible text]

[Illegible white label text]



[Illegible white label text]

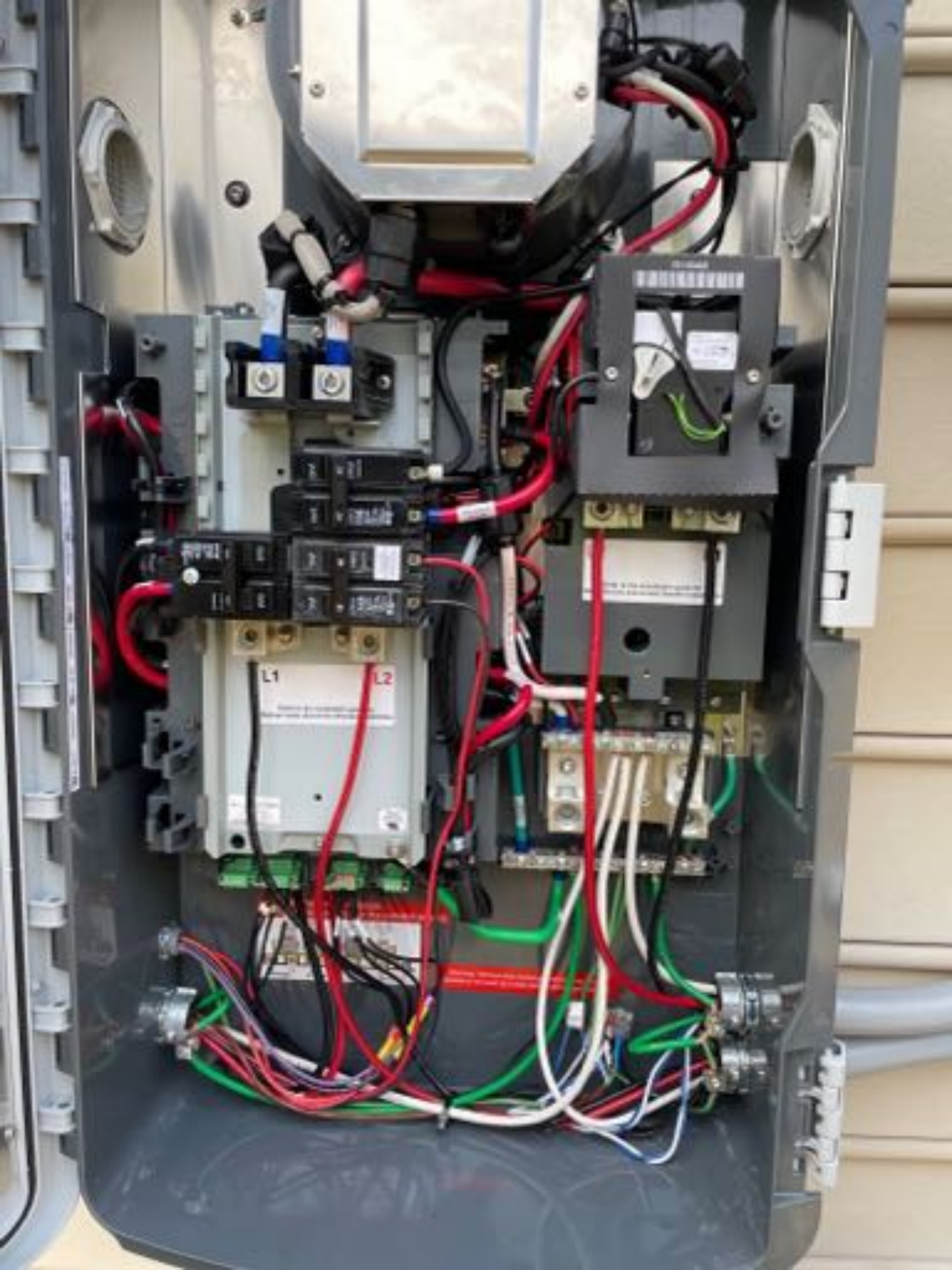
[Illegible white label text]

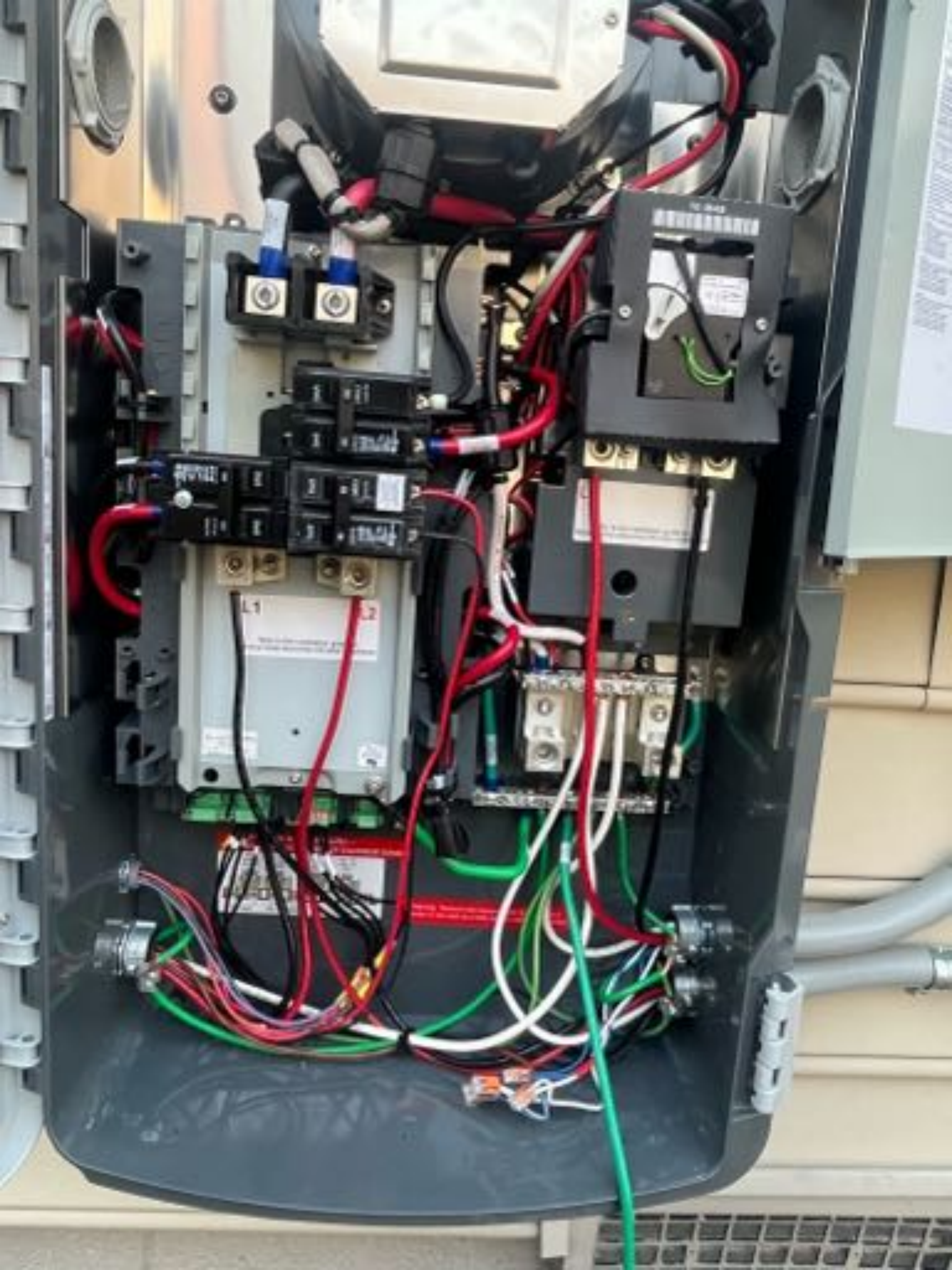


DANGER
[Illegible text]











Handwritten notes on the inside of the door, including a list of items and a date.

Sub
Feeders

Load shed
Power

Panel 1 = 0
Panel 2 = 0
Panel 3 = 1

1x 1000/10
1x 1000/10
1x 1000/10

Micro / kit
Plugs
tv / living

BACK UP LOADS







Wiring Diagram
Detailed electrical schematic showing connections between components within the upper control box.

Wiring Diagram
Detailed electrical schematic showing connections between components within the lower control box.

Labels for Breakers:
Left Breaker: [Label]
Right Breaker: [Label]

Informational label with technical specifications and a barcode.

Central circular label with text.

Terminal block with four ports, labeled with 'L' and 'N'.

Terminal block with two ports, one red and one black.

Terminal block with two ports, one red and one black.

Small rectangular label with text.

Label with orange header and technical information.

Nitchals

