





165 Jared Dr, Fuquay

2010 100 AMP 250V
TYPE 100 250V
UL LISTED
UL 100 250V















REFER TO INSTALLATION MANUAL
VOLUME 100 (U) DANCE
TORQUE FOR ALL COVERS & NUTS: 50-10 LBS
CONFORM TO ALL APPLICABLE CODES



Interlock
5018142 ALPHA 3R





MC POWER SOURCE









MISSION SOLAR ENERGY

Serial No. 0021031-00003



Model Number	MSE2000AER	
Rated Maximum Power	741	300 (±0.5%)
Open-Circuit Voltage	37	49.8
Voltage at Pmax	31	38.8
Short-Circuit Current	21	18.85
Current at Pmax	24	18.54
Max. System Voltage	37	1000
Max. Series overcurrent protective device (where required) fuse rating	20	20
Standard test condition	1000 W/m ² AM1.5 Global, 25°C	



For field connections, use only 10 AWG PV, 10 AWG, or 12 AWG wire. Use wire rated for a minimum of 90°C, used for wet conditions and suitable for ultra-violet radiation where required. See installation manual for PV connector details and compatibility. Assurez-vous d'utiliser des câbles adaptés. Les câbles doivent être adaptés aux conditions d'humidité et être adaptés à la lumière ultraviolette. Voir le manuel d'installation pour les détails des connecteurs PV et de leur compatibilité.

Fuse Rating: Type C

Class of Equipment: Class II

Surge Limit: Maximum 2000 Pe Peak and Average; 2000 Pe for 10 ms

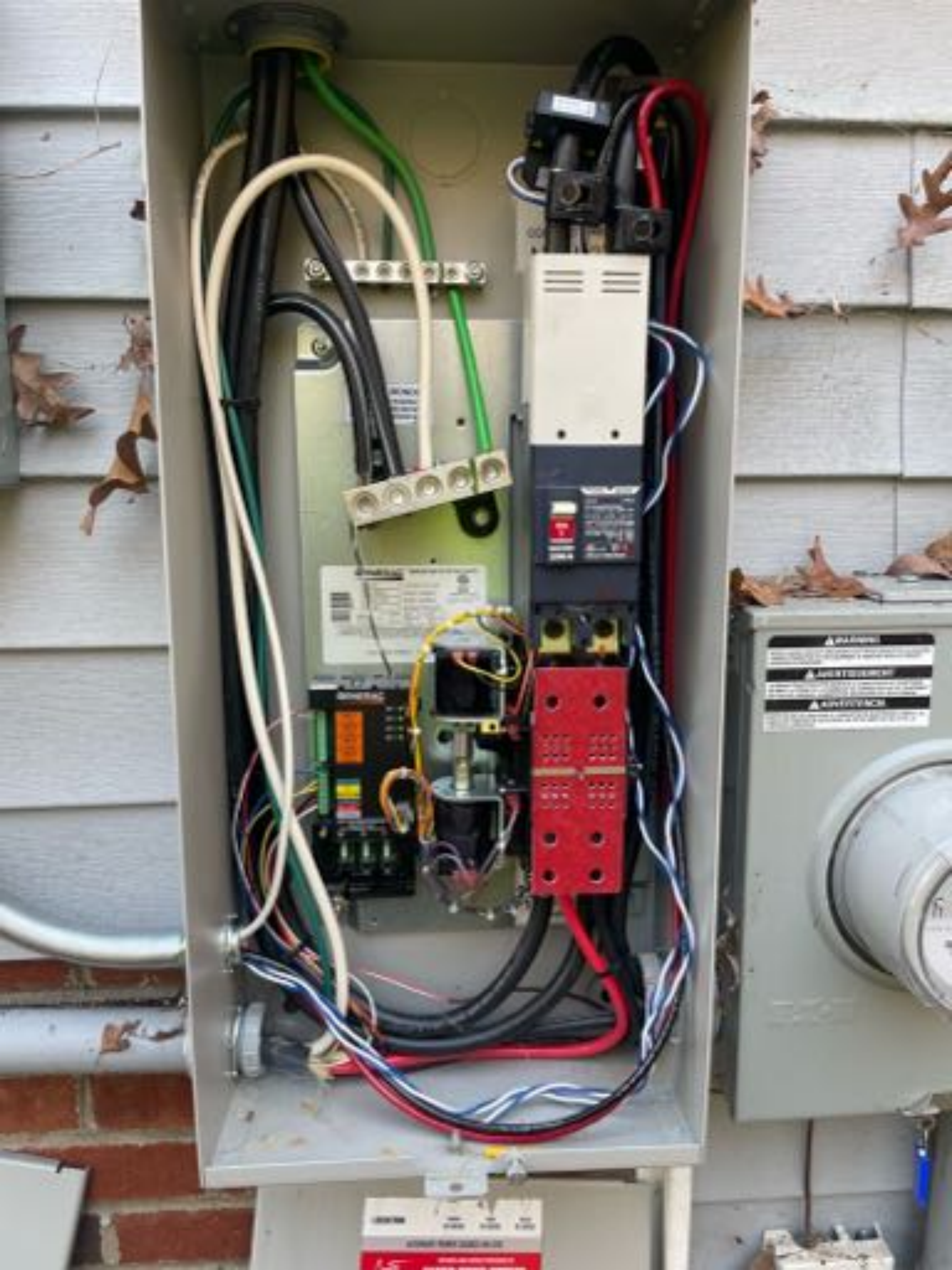


Warning

PV modules generate voltage even with very weak light. Do not open the junction box. Les modules PV produisent une tension même en faible lumière. Ne pas ouvrir la boîte de jonction.



Address
620 S. New England Ave.
San Antonio, TX 78215
www.mission-solar.com









165 Jared Dr, Fuquay

WARRANTY
This product is warranted to be free from defects in material and workmanship for a period of 10 years from the date of installation. The warranty is void if the product is used for any purpose other than that intended by the manufacturer.

UL LISTED
UL 100
UL 100A
UL 100B
UL 100C
UL 100D
UL 100E
UL 100F
UL 100G
UL 100H
UL 100I
UL 100J
UL 100K
UL 100L
UL 100M
UL 100N
UL 100O
UL 100P
UL 100Q
UL 100R
UL 100S
UL 100T
UL 100U
UL 100V
UL 100W
UL 100X
UL 100Y
UL 100Z

ETL
Intertek
ASTM A 100
ASTM A 101











THE UNIVERSITY OF CHICAGO
LIBRARY
1100 EAST 58TH STREET
CHICAGO, ILL. 60637
TEL: 773-936-3000
WWW.CHICAGO.EDU



1-800-368-1313
SPACE SAVING
1/8 INCH T.E.
1/4 INCH T.E.
THIS SIDE DO NOT
ESTER LAE

1-800-368-1313
SPACE SAVING
1/8 INCH T.E.
1/4 INCH T.E.
THIS SIDE DO NOT
ESTER LAE

1-800-368-1313
SPACE SAVING
1/8 INCH T.E.
1/4 INCH T.E.
THIS SIDE DO NOT
ESTER LAE

1-800-368-1313
SPACE SAVING
1/8 INCH T.E.
1/4 INCH T.E.
THIS SIDE DO NOT
ESTER LAE

1-800-368-1313
SPACE SAVING
1/8 INCH T.E.
1/4 INCH T.E.
THIS SIDE DO NOT
ESTER LAE

1-800-368-1313
SPACE SAVING
1/8 INCH T.E.
1/4 INCH T.E.
THIS SIDE DO NOT
ESTER LAE

1-800-368-1313
SPACE SAVING
1/8 INCH T.E.
1/4 INCH T.E.
THIS SIDE DO NOT
ESTER LAE

1-800-368-1313
SPACE SAVING
1/8 INCH T.E.
1/4 INCH T.E.
THIS SIDE DO NOT
ESTER LAE

1-800-368-1313
SPACE SAVING
1/8 INCH T.E.
1/4 INCH T.E.
THIS SIDE DO NOT
ESTER LAE

1-800-368-1313
SPACE SAVING
1/8 INCH T.E.
1/4 INCH T.E.
THIS SIDE DO NOT
ESTER LAE

1-800-368-1313
SPACE SAVING
1/8 INCH T.E.
1/4 INCH T.E.
THIS SIDE DO NOT
ESTER LAE

1-800-368-1313
SPACE SAVING
1/8 INCH T.E.
1/4 INCH T.E.
THIS SIDE DO NOT
ESTER LAE

FACTORY POWER SOURCE



⚠ WARNING

PHOTOVOLTAIC SYSTEM
COMBINER PANEL
DO NOT ADD LOADS

PV SYSTEM DISCONNECT

⚠ WARNING

ELECTRIC SHOCK HAZARD
TERMINALS ON THE LINE
AND LOAD SIDES
MAY BE ENERGIZED
IN THE OPEN POSITION

 ENPHASE.

⚠ WARNING
 SHOCK HAZARD EXIST IN ENCLOSURE. DISCONNECT ALL POWER SOURCES INCLUDING UTILITY AND PV SOLAR ELECTRICAL SYSTEMS BEFORE WORKING ON THIS EQUIPMENT TO AVOID FATAL OR SERIOUS INJURY.

⚠ AVERTISSEMENT
 IL Y A UN DANGER DE CHOC ÉLECTRIQUE EN L'INTÉRIEUR DE CETTE BOÎTE. DÉBRANCHER TOUS LES SOURCES D'ÉNERGIE, Y COMPRIS LE SYSTÈME D'ÉLECTRICITÉ UTILE ET LE SYSTÈME D'ÉLECTRICITÉ PV SOLAIRE, AVANT DE TRAVAILLER À L'INTÉRIEUR DE CETTE BOÎTE POUR ÉVITER DES BLESSURES GRAVES OU LA MORT.

⚠ ADVERTENCIA
 HAY UN PELIGRO DE GOLPE ELÉCTRICO EN EL INTERIOR DE ESTE CABAJÓN. DESCONECTAR TODAS LAS FUENTES DE ENERGÍA, INCLUIDO EL SISTEMA DE ALIMENTACIÓN ELÉCTRICA Y EL SISTEMA DE ALIMENTACIÓN PV SOLAR, ANTES DE TRABAJAR EN EL INTERIOR DE ESTE CABAJÓN PARA EVITAR LESIONES GRAVES O LA MUERTE.

The meter is covered with a tamper-resistant lid. Only authorized persons are permitted to access the meter and its components. NEVER tamper with the meter.

Do not touch the terminals or the meter cover.

Do not touch the terminals or the meter cover.

Do not touch the terminals or the meter cover.

Do not touch the terminals or the meter cover.

Do not touch the terminals or the meter cover.

Do not touch the terminals or the meter cover.

Do not touch the terminals or the meter cover.

Do not touch the terminals or the meter cover.



⚠ WARNING
 DUAL POWER SOURCE SOURCES: UTILITY WIRE AND PV SOLAR ELECTRICAL SYSTEM

PV SYSTEM kWh METER





EATON®

General Duty Safety Switch
Interrupteur de sécurité à usage général
Interruptor de seguridad de servicio general

60 A, 240 V~, 60 Hz

Complete ratings inside
Valeurs nominales complètes à l'intérieur
Información completa de capacidades en el interior

Further instructions inside
Autres instructions à l'intérieur
Instrucciones adicionales en el interior

Made in U.S.A. / Fabriqué aux É.-U. / Hecho en E.U.A.

	⚠ DANGER
	HAZARDOUS VOLTAGE, WILL CAUSE SEVERE INJURY OR DEATH. ● Never operate switch with cover open. ● Turn OFF power ahead of switch before doing any work inside. Replace all parts. Close cover before turning power ON.
	TENSION DANGEREUSE, PEUT CAUSER DES BLESSURES GRAVES OU LA MORT. ● Ne jamais manœuvrer l'interrupteur lorsque le couvercle est ouvert. ● Couper l'alimentation en amont de l'interrupteur avant toute intervention. Remplacer les pièces. Fermer le couvercle avant de remettre sous tension.
	⚠ PELIGRO
	VOLTAJE PELIGROSO, PUEDE CAUSAR HERIDAS SEVERAS O LA MUERTE. ● Nunca opere el interruptor con la cubierta abierta. ● Desconectar la alimentación del interruptor antes de trabajar dentro del mismo. Reemplazar todas las partes. Cerrar la cubierta antes de energizar el interruptor.

30-43080





DESIGNED FOR SPACING
EXPOSURE 1

456

PS 2-92 SHEATHING

1-118 PER-UM-40

NER-124

↑ STRENGTH AXIS ↑
↓ TUBE DIRECTION ↓

↑ STRENGTH AXIS ↑
↓ TUBE DIRECTION ↓

↑ STRENGTH AXIS ↑
↓ TUBE DIRECTION ↓

WLP

APA

24/16 7/16







LOCATION	PHASE	LINE	LINE
	01400	01400	01400

ALTERNATE POWER SOURCE ON SITE


CARTER POWER SYSTEMS
 11011 11011 11011

SERVICES PROVIDED INCLUDE:

WATS	125748
1#	12 8 0 0 0 0 00

GENERAC

EMERGENCY
DISCONNECT

SERVICE
DISCONNECT

WARNING

TURN OFF EMERGENCY AND SERVICE DISCONNECT BEFORE WORKING ON THE PANEL.

WARNING

ELECTRIC SHOCK HAZARD! TERMINALS ON THE LINE AND LEADS MAY BE ENERGIZED BY THE OPEN POSITION.

WARNING

THIS EQUIPMENT IS CAPABLE OF SOURCE TOOLING OF ALL DEPENDENT DEVICES, EXCLUDING MAIN SUPPLY DISCONNECT. SERVICE SHALL BE PERFORMED IN ACCORDANCE WITH THE MANUFACTURER'S INSTRUCTIONS.

**SOLAR PV SYSTEM
EQUIPPED WITH
RAPID SHUTDOWN**



TURN RAPID SHUTDOWN OFF BY THE SUPPLIER TO THE PV SYSTEM AND REMOVE SERVICE BEFORE WORKING ON THE SYSTEM.

WARNING

HAZARD

HAZARD

HAZARD

WARNING

ALL WORK MUST BE PERFORMED BY A LICENSED ELECTRICIAN.

PV SYSTEM MAIN METER

EMERGENCY SERVICE
CALL 24 HOURS
1-800-333-3333

GENERAC
11011 11011 11011





1
6
5

AMERICAN ELECTRIC COMPANY
Model: **MA12021-0000**

Rated Voltage	120 V
Rated Frequency	60 Hz
Rated Power	1200 W
Rated Current	10 A
Rated Power Factor	1.0
Rated Efficiency	100%

UL Listed for use in residential applications.
UL Classified for use in commercial applications.
UL Classified for use in industrial applications.

UL
ETL
CSA

MA12021-0000
120V, 10A, 1200W
MA12021-0000







EATON

Questo interruttore è un interruttore
protegitore per sistemi a energia generata
dalla luce solare (PV).

BEA-200V-363A

Questo interruttore è un interruttore
protegitore per sistemi a energia generata
dalla luce solare (PV).

Questo interruttore è un interruttore
protegitore per sistemi a energia generata
dalla luce solare (PV).

Questo interruttore è un interruttore
protegitore per sistemi a energia generata
dalla luce solare (PV).

Questo interruttore è un interruttore
protegitore per sistemi a energia generata
dalla luce solare (PV).

Questo interruttore è un interruttore
protegitore per sistemi a energia generata
dalla luce solare (PV).

Questo interruttore è un interruttore
protegitore per sistemi a energia generata
dalla luce solare (PV).

Questo interruttore è un interruttore
protegitore per sistemi a energia generata
dalla luce solare (PV).

Questo interruttore è un interruttore
protegitore per sistemi a energia generata
dalla luce solare (PV).

Questo interruttore è un interruttore
protegitore per sistemi a energia generata
dalla luce solare (PV).

Questo interruttore è un interruttore
protegitore per sistemi a energia generata
dalla luce solare (PV).

Questo interruttore è un interruttore
protegitore per sistemi a energia generata
dalla luce solare (PV).

Questo interruttore è un interruttore
protegitore per sistemi a energia generata
dalla luce solare (PV).

Questo interruttore è un interruttore
protegitore per sistemi a energia generata
dalla luce solare (PV).

Questo interruttore è un interruttore
protegitore per sistemi a energia generata
dalla luce solare (PV).

Questo interruttore è un interruttore
protegitore per sistemi a energia generata
dalla luce solare (PV).

Questo interruttore è un interruttore
protegitore per sistemi a energia generata
dalla luce solare (PV).

Questo interruttore è un interruttore
protegitore per sistemi a energia generata
dalla luce solare (PV).

Questo interruttore è un interruttore
protegitore per sistemi a energia generata
dalla luce solare (PV).

Questo interruttore è un interruttore
protegitore per sistemi a energia generata
dalla luce solare (PV).

Questo interruttore è un interruttore
protegitore per sistemi a energia generata
dalla luce solare (PV).

Questo interruttore è un interruttore
protegitore per sistemi a energia generata
dalla luce solare (PV).

Questo interruttore è un interruttore
protegitore per sistemi a energia generata
dalla luce solare (PV).

Questo interruttore è un interruttore
protegitore per sistemi a energia generata
dalla luce solare (PV).

Questo interruttore è un interruttore
protegitore per sistemi a energia generata
dalla luce solare (PV).

Questo interruttore è un interruttore
protegitore per sistemi a energia generata
dalla luce solare (PV).

Questo interruttore è un interruttore
protegitore per sistemi a energia generata
dalla luce solare (PV).

AC DISCONNECT
PHOTOVOLTAC SYSTEM
POWER SOURCE

RATED AC
OUTPUT CURRENT **363** AMPS

NOMINAL OPERATING
AC VOLTAGE **240** VOLTS



RAPID SHUTDOWN
SWITCH FOR
SOLAR PV SYSTEM



ENPHASE

IQ Combiner 4

Photovoltaic
Combiner Box
X-IQ-AM1-240-4



Electrical ratings

Voltage 240VAC, 60Hz
 DC Breakers 80A MAX (combined)
 DC Inputs 66A MAX (combined)
 Output 80A MAX, 100A MAX breaker OCPD
 Temperature 40°C MAX ambient
 For DC breaker, use only Eaton BR series

202241154673

202241154673

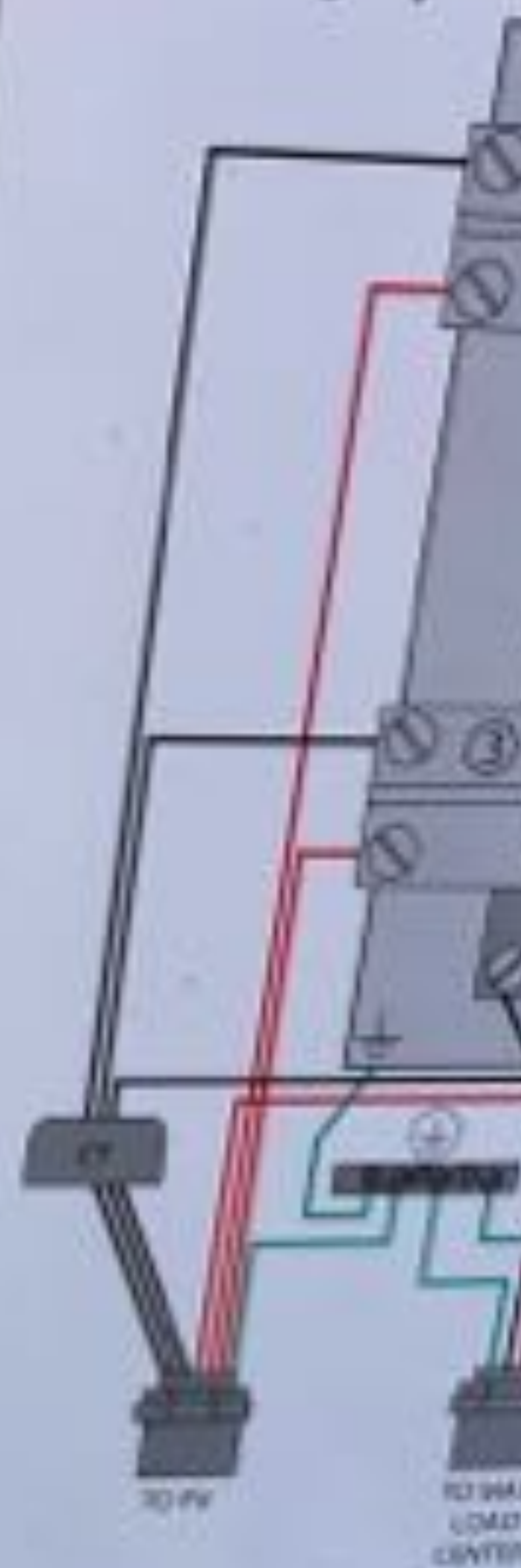
882-01356 207741

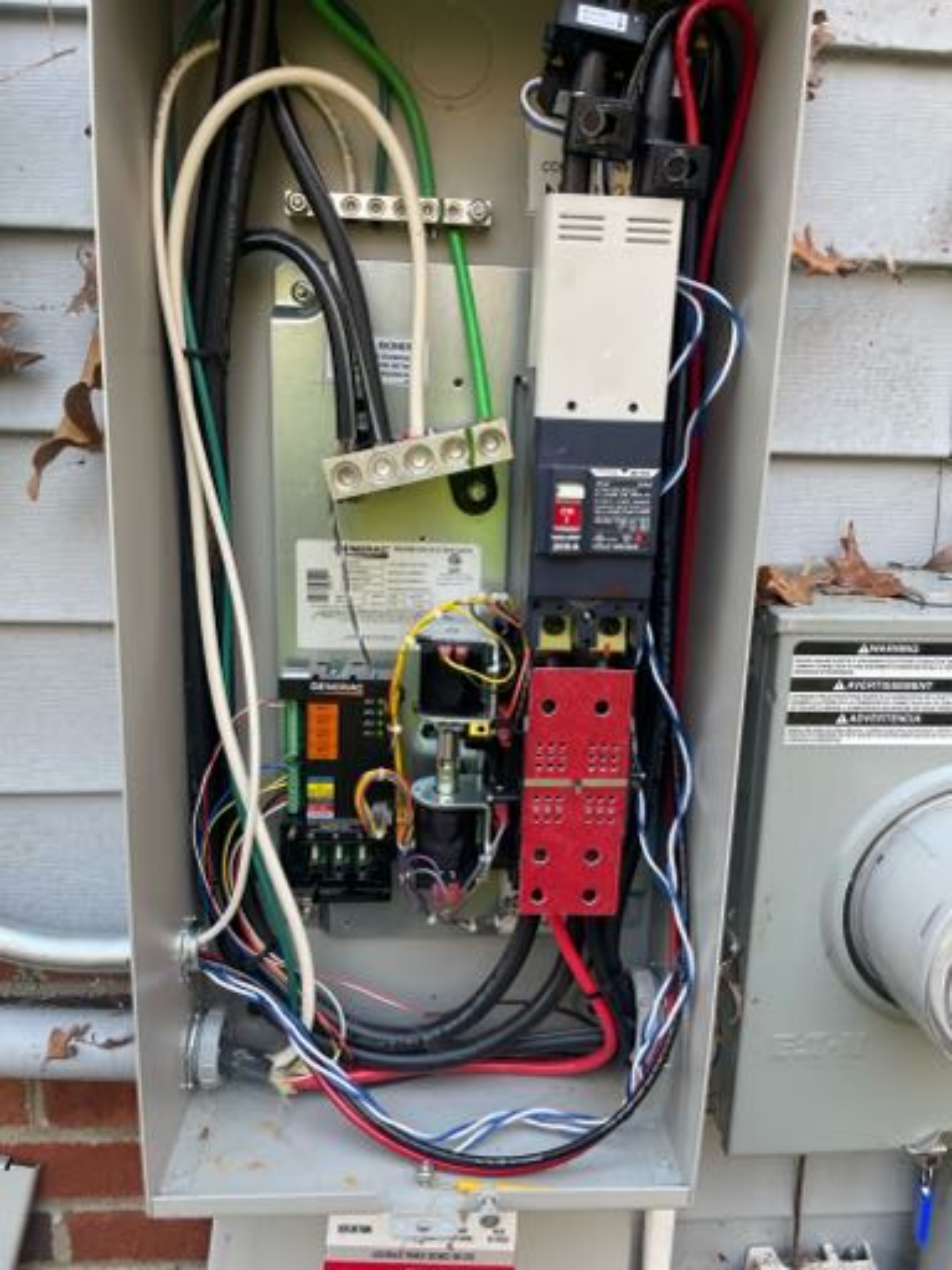
Dedicated solar and DC Combiner Box - do not add loads
 to main or to any IQ Gateway Breaker not qualified for backfeed

Connection	Wire size	Termination	
DC Breaker (1, 2, 3, 4)	14-12 AWG	2.2 Nm (20 lb-in)	
	8 AWG	2.8 Nm (25 lb-in)	
	6-4 AWG	3.0 Nm (27 lb-in)	
60A Circuit Breaker only	6-10 AWG	3.0 Nm (27 lb-in)	
IQ Gateway Breaker	14-12 AWG	2.2 Nm (20 lb-in)	
Neutral and ground	Large wire	2-10 AWG	1.8 Nm (16 lb-in)
		14-2 AWG	1.1 Nm (10 lb-in)
	Screw	6 AWG	3.8 Nm (32 lb-in)
		8 AWG	2.6 Nm (23 lb-in)
10-14 AWG		2.3 Nm (20 lb-in)	
Main lug	10-8 AWG	1.0 Nm (9 lb-in)	
	4-100 AWG	3.0 Nm (27 lb-in)	

Copper conductors only, rated min. 75°C
 Follow NEC, IEC, or CSA C22.1 part 1, and all local codes
 For DC busbars, larger than 20A, use wire insulated for 60°C
 based on PTC application
 Designed in California and New Zealand
 Made in Mexico

For IQ-8 Grid
Forming System















250 VAC MAX
200A @ 4V @ 50Hz



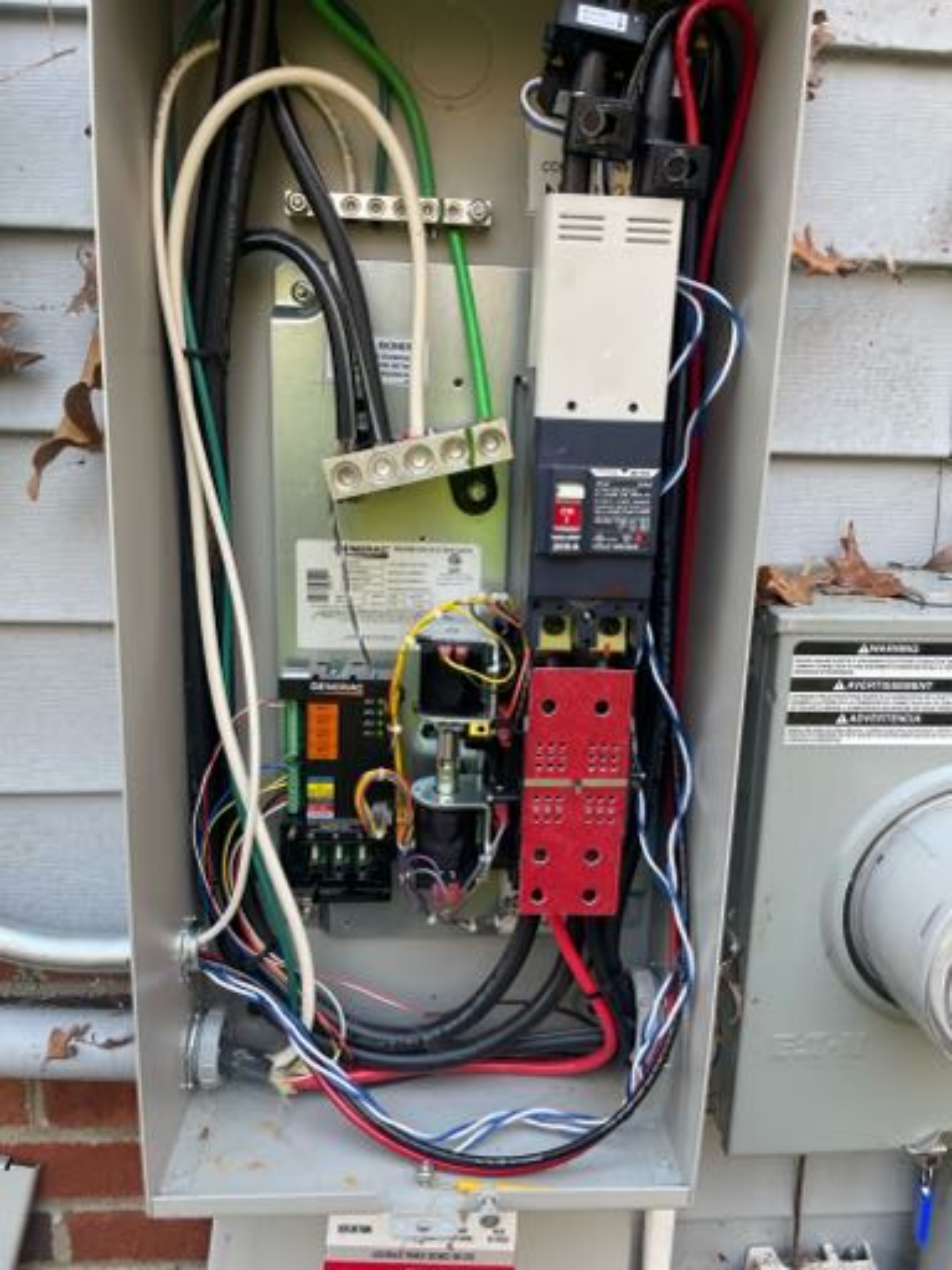


















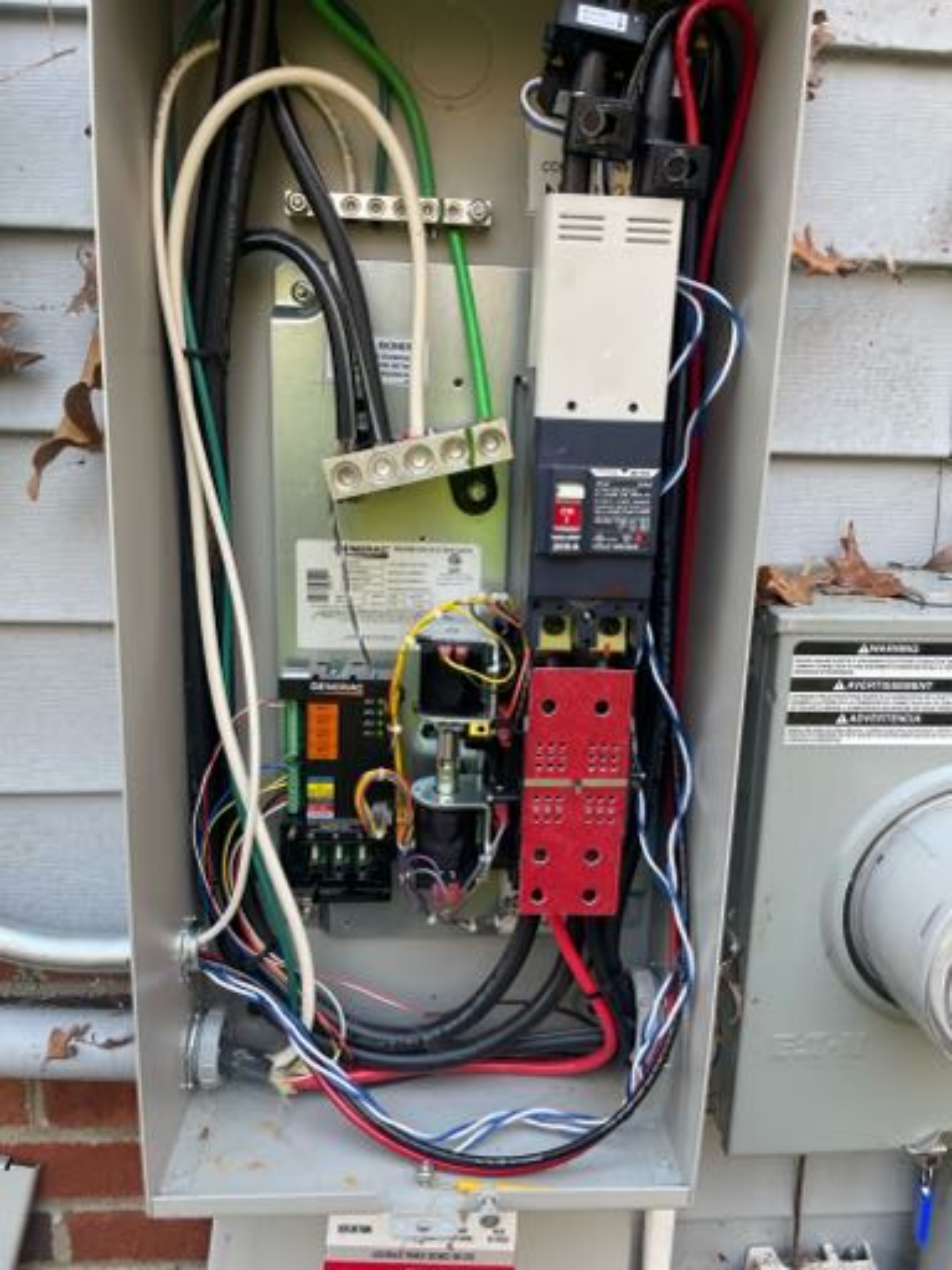


.9121ECCOMD.PEGAWIG















EZ4
SOLAR

00

100A
11 12

100A
13 14

WARNING
DE-ENERGIZE ALL CIRCUITS
BEFORE INSTALLING THE
CT LEAD WIRE.
(BLOW THE DEADFRONT).
SAFETY HAZARD AND RISK OF
EQUIPMENT DAMAGE IF
INSTALLED WHILE
CIRCUITS ARE ENERGIZED.

WARNING
DO NOT TOUCH THE WIRE
OR TERMINALS INSIDE THE
CASE OR THE TERMINAL BLOCKS
WHILE THE CASE IS OPEN.

100A
15 16

100A
17 18

100A
19 20

WARNING: DO NOT TOUCH THE WIRE OR TERMINALS INSIDE THE CASE OR THE TERMINAL BLOCKS WHILE THE CASE IS OPEN.

WARNING: DO NOT TOUCH THE WIRE OR TERMINALS INSIDE THE CASE OR THE TERMINAL BLOCKS WHILE THE CASE IS OPEN.



250 Vac MAX.
200A 0.5V 45-65Hz



WESCO
IPC 40-30
470-24
158 IN-24
KIPPLE
UP IN CABLE BOX

UP IN CABLE BOX
158 IN-24



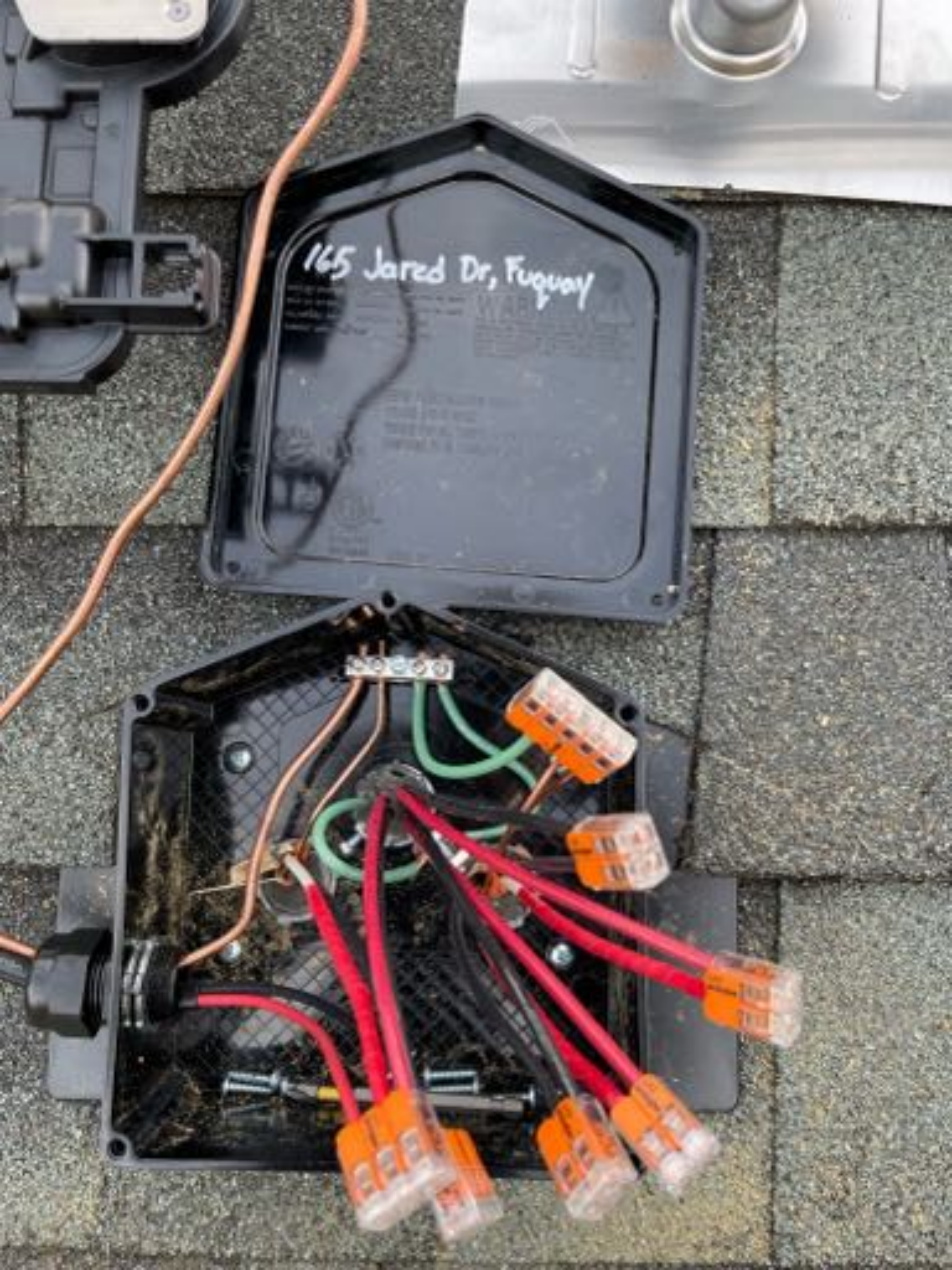








165 Jared Dr, Fuquay









ELECTRICAL RESIDENTIAL

910-893-7525

www.harnett.org

PERMIT NUMBER

ERES2211-0027

JOB ADDRESS: 165 JARED DR	PERMIT SUBTYPE: RESIDENTIAL SOLAR PANELS	PARCEL NO: 0654-87-0900.000
DESCRIPTION: roof mounted solar panels	DATE ISSUED: 11/21/2022	DATE EXPIRED:
PLAN NAME:	ZONING DISTRICT: RA-30 - 1.32 acres (100.0%)	

APPLICANT: Top Tier Solar Solutions, LLC 266 Glenn Village Cir Blythewood, SC 29016	PHONE: (801)927-8969 EMAIL: jvanwynen@toptiersolarsolutions.com
CONTRACTOR: Top Tier Solar Solutions, LLC 266 Glenn Village Cir Blythewood, SC 29016	PHONE: (801)927-8969 EMAIL: jvanwynen@toptiersolarsolutions.com
OWNER: SPERICO MICHAEL R 165 JARED DR FUQUAY-VARINA, NC 27526 FUQUAY VARINA, NC 27526-0000	PHONE: EMAIL:

REQUIRED INSPECTIONS

INSPECTION TYPE	APPROVAL	DATE	COMMENTS
FINAL**			
ROUGH IN			