



 ENPHASE

 **WARNING**

PHOTOVOLTAIC SYSTEM
COMBINER PANEL

DO NOT ADD LOADS

 **WARNING**

ELECTRIC SHOCK HAZARD
TERMINALS ON THE LINE AND
LOAD SIDES MAY BE ENERGIZED
IN THE OPEN POSITION

 **WARNING**

POWER SOURCE
OUTPUT CONNECTION
DO NOT RELOCATE THIS
OVERCURRENT DEVICE

⚠ WARNING

TURN OFF PHOTOVOLTAIC
AC DISCONNECT PRIOR TO
WORKING INSIDE PANEL

⚠ WARNING

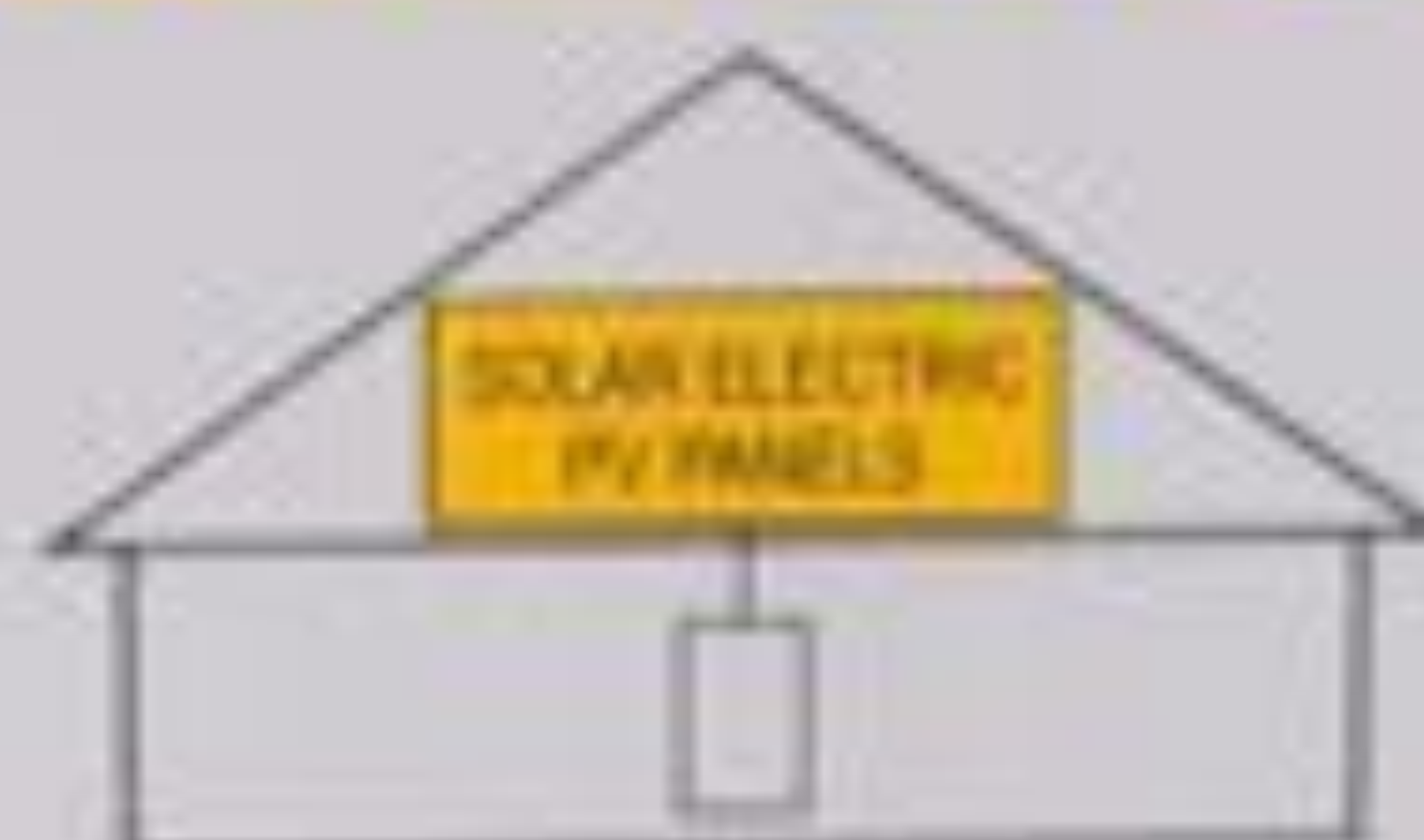
ELECTRIC SHOCK HAZARD

TERMINALS ON THE LINE AND
LOAD SIDES MAY BE ENERGIZED
IN THE OPEN POSITION

⚠ WARNING

THIS EQUIPMENT FED BY MULTIPLE
SOURCES. TOTAL RATING OF ALL
OVERCURRENT DEVICES, EXCLUDING
MAIN SUPPLY OVERCURRENT
DEVICE, SHALL NOT EXCEED
AMPACITY OF BUSBAR.

**SOLAR PV SYSTEM
EQUIPPED WITH
RAPID SHUTDOWN**



TURN RAPID SHUTDOWN SWITCH TO
THE "OFF" POSITION TO SHUT DOWN
PV SYSTEM AND REDUCE
SHOCK HAZARD IN THE ARRAY



TELECOM ITALIA
100-600
CE

ABB

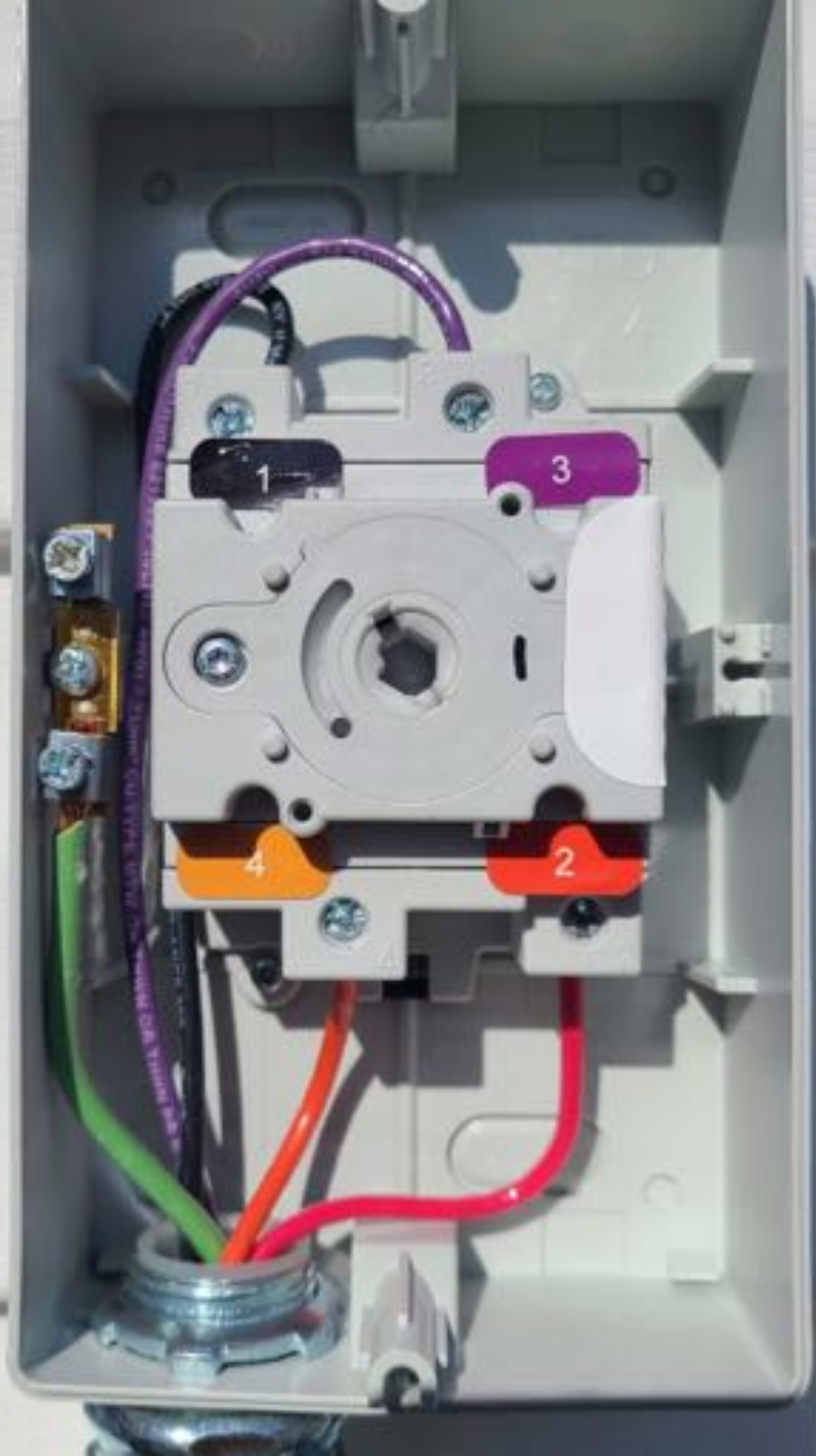
ABB

L1 L2 L3 L1 L2 L3

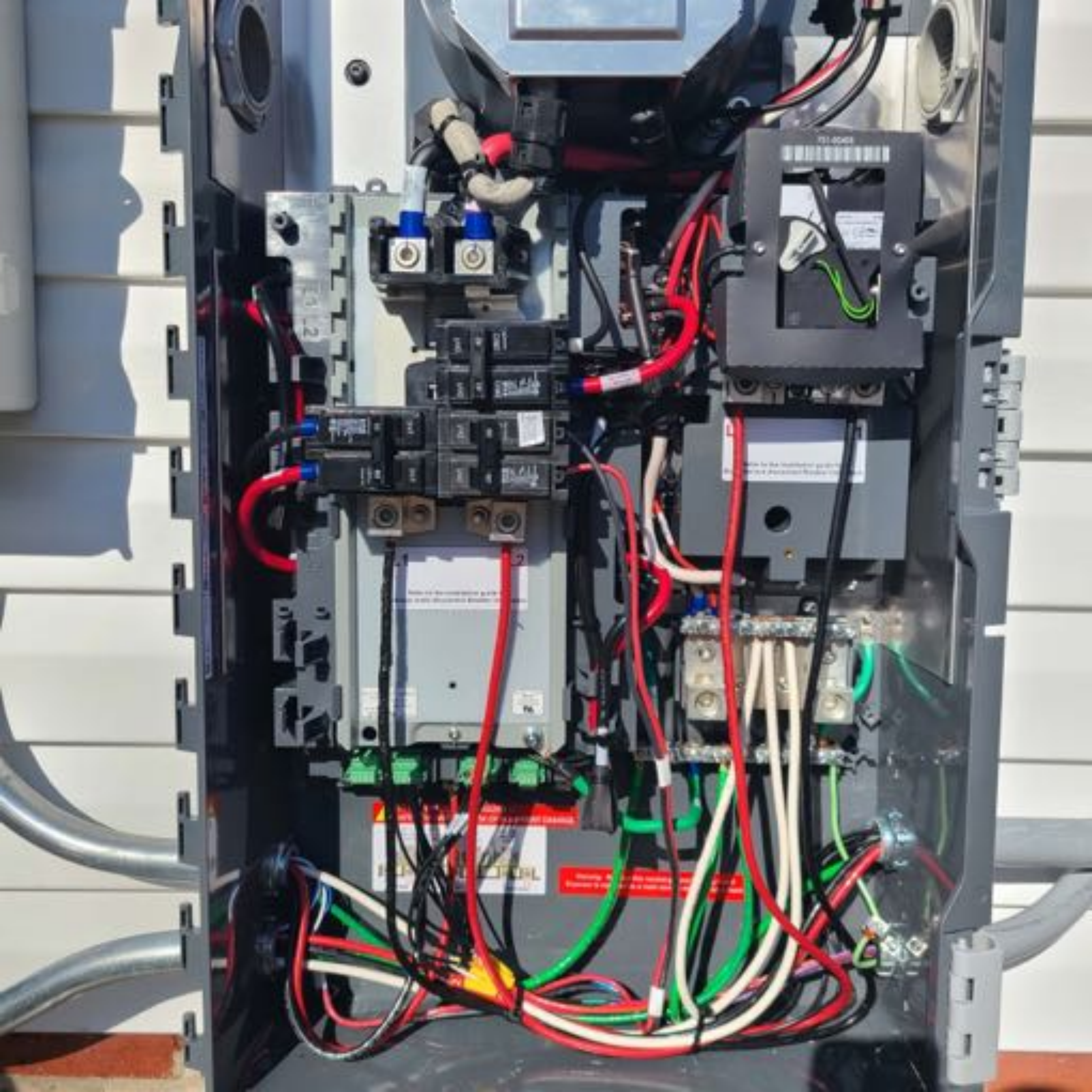
211 412 613 211 412 613

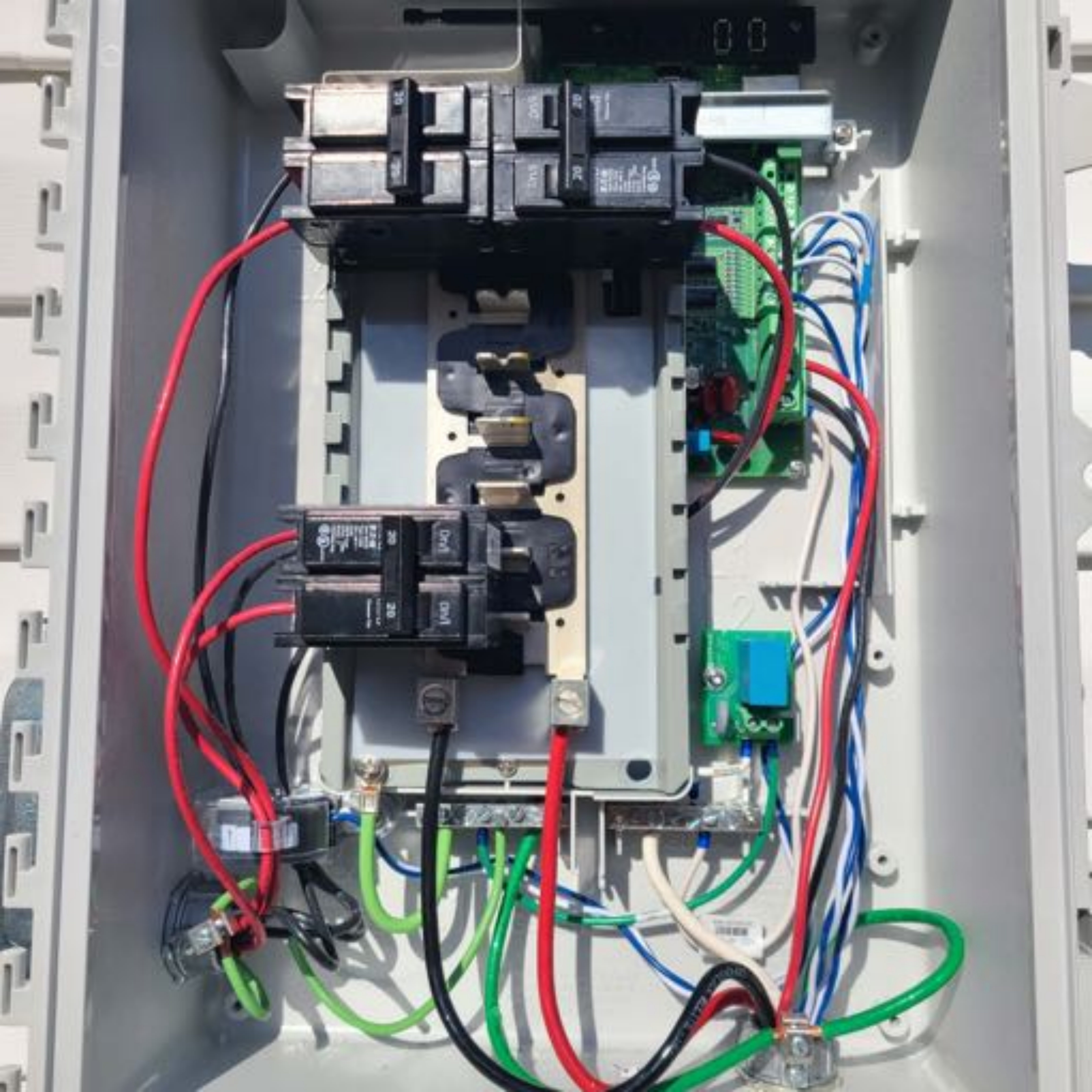
ABB

ABB











U	I

Technical specifications and safety information printed on the left side of the panel.

PUBS/STC



⚠ PELIGRO
VOLTAJE PELIGROSO. PUEDE CAUSAR
HERIDAS SEVERAS O LA MUERTE.
• Nunca opere el interruptor con la cubierta abierta.
• Inspeccione la dirección del flujo de energía antes de
cualquier operación de mantenimiento. Siempre use los cables
correctos y asegurelos antes de operar el interruptor.

OFF
○

AC DISCONNECT

**PHOTOVOLTAIC SYSTEM
POWER SOURCE**

RATED AC
OUTPUT CURRENT **49.9** AMPS

NOMINAL OPERATING
AC VOLTAGE **240** VOLTS

**RAPID SHUTDOWN
SWITCH FOR
SOLAR PV SYSTEM**

A 11
B
A 13
B
A 15
B

⚠ WARNING

**SOLAR ELECTRIC
CIRCUIT BREAKER
IS BACKFED**

**DO NOT RELOCATE THIS
OVERCURRENT DEVICE**

B

OFF/C 50 **On/I**

Q-T-N
Type BQ200
Type CBM
401/240 V -
Quick Trip
2 Pole, 2-Line
SIRSI - 1
LIMBON Dmg

OFF/C 50 **On/I**

0
On/I
On/I
On/I
On/I





Off/On
M.T.M.
Type BR225
Type C250
125 / 125 V -
Circuit de Max. Wires
Make Type
2 Poles - 1 Pole
ST-15 - T
LAISSER ENCL
UL LISTED

50

On/Off

50

On/Off

On/Off

30

On/Off

70

On/Off

70

Off/On

Off/On





















SUB PANEL
IN
House
Stove
Electric
Heat

Water
Heater
Heat
Pump









SUB PANEL
IN
House
Stove
Electric
Heat

Water
Heater
Heat
Pump

























ve

e

WA

He

He

Pe













INSTALLATION MAP

Plant Group Name: 33
Address:
Phone:
Sheet No: 33

Customer Name: Michael Greiner

Customer Name: Satey, Satey, Drees
Emerald

DATE: 9.11.00



Scale: 1:1000
 Date: 9.11.00
 Drawn by: [Name]
 Checked by: [Name]

Customer: Satey, Satey, Drees
 Emerald

















ENPHASE

WARNING
DANGER OF ELECTRIC SHOCK
AND BURNING. THE SURFACE
MAY BE HOT TO THE TOUCH.
DO NOT TOUCH.

WARNING
DANGER OF ELECTRIC SHOCK
AND BURNING. THE SURFACE
MAY BE HOT TO THE TOUCH.
DO NOT TOUCH.

WARNING
DANGER OF ELECTRIC SHOCK
AND BURNING. THE SURFACE
MAY BE HOT TO THE TOUCH.
DO NOT TOUCH.

WARNING
DANGER OF ELECTRIC SHOCK
AND BURNING. THE SURFACE
MAY BE HOT TO THE TOUCH.
DO NOT TOUCH.

WARNING
DANGER OF ELECTRIC SHOCK
AND BURNING. THE SURFACE
MAY BE HOT TO THE TOUCH.
DO NOT TOUCH.

WARNING
DANGER OF ELECTRIC SHOCK
AND BURNING. THE SURFACE
MAY BE HOT TO THE TOUCH.
DO NOT TOUCH.







PV SYSTEM DISCONNECT

⚠ WARNING

ELECTRIC SHOCK HAZARD
TERMINALS ON THE LINE
AND LOAD SIDES
MAY BE ENERGIZED
IN THE OPEN POSITION

AC DISCONNECT

PHOTOVOLTAGIC SYSTEM
POWER SOURCE

RATED AC _____ AMPS

OUTPUT CURRENT

NOMINAL OPERATING _____ VOLTS

AC VOLTAGE

**RAPID SHUTDOWN
SWITCH FOR
SOLAR PV SYSTEM**

AC DISCONNECT





THIS PANEL MUST BE KEPT CLOSED TO
PREVENT CONTACT WITH ELECTRICAL
SYSTEM AND REDUCE
SHOCK HAZARD TO THE USER



⚠ WARNING

TURN OFF PHOTOVOLTAC
AC DISCONNECT PRIOR TO
WORKING INSIDE PANEL
PV SYSTEM DISCONNECT

⚠ WARNING

ELECTRIC SHOCK HAZARD
TERMINALS ON THE LINE
AND LOAD SIDES
MAY BE ENERGIZED
IN THE OPEN POSITION

⚠ WARNING

THE EQUIPMENTED BY MULTIPLE
SOURCE TOTAL RATING OF ALL
DISCONNECT DEVICES EXCLUDING
MAIN SUPPLY OVERCURRENT
DEVICE SHALL NOT EXCEED
RATING OF BUSBAR













ve

e

WA

He

He

Pe

