

SOLAR PV BREAKER
BREAKER IS BACKFED
DO NOT RELOCATE

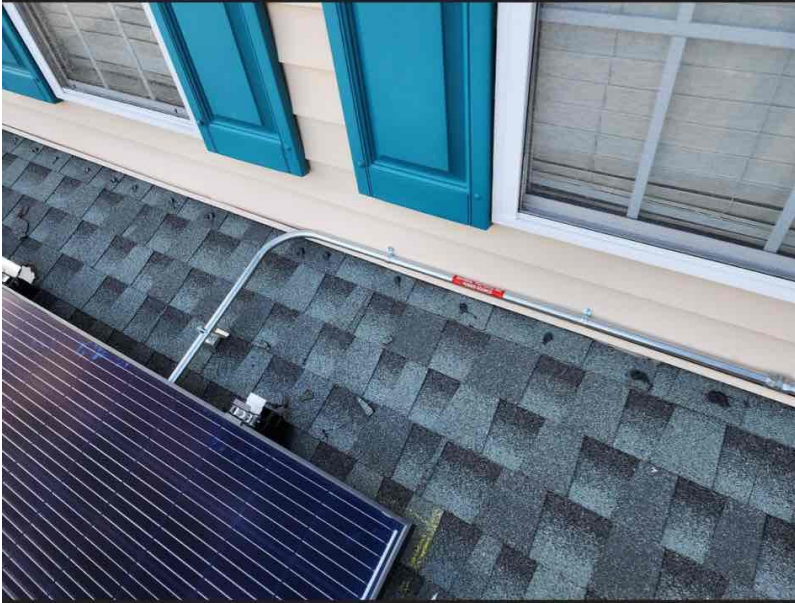
| | | |
|----|---------------|--------------|
| 41 | | |
| 39 | Solar | |
| 38 | Panels | |
| 36 | | |
| 34 | | |
| 32 | | |
| 30 | | Garage |
| 28 | Master Bed | Up Lvl |
| 26 | Bed 2/3 | W/Lv |
| 24 | Light | Diag C |
| 22 | Living Room | |
| 20 | Garage | Water Heater |
| 18 | Break Room | |
| 16 | Diag | Diag |
| 14 | Light | |
| 12 | Master Bed | Diag |
| 10 | Up | |
| 8 | Bed | Diag |
| 6 | Diag | |

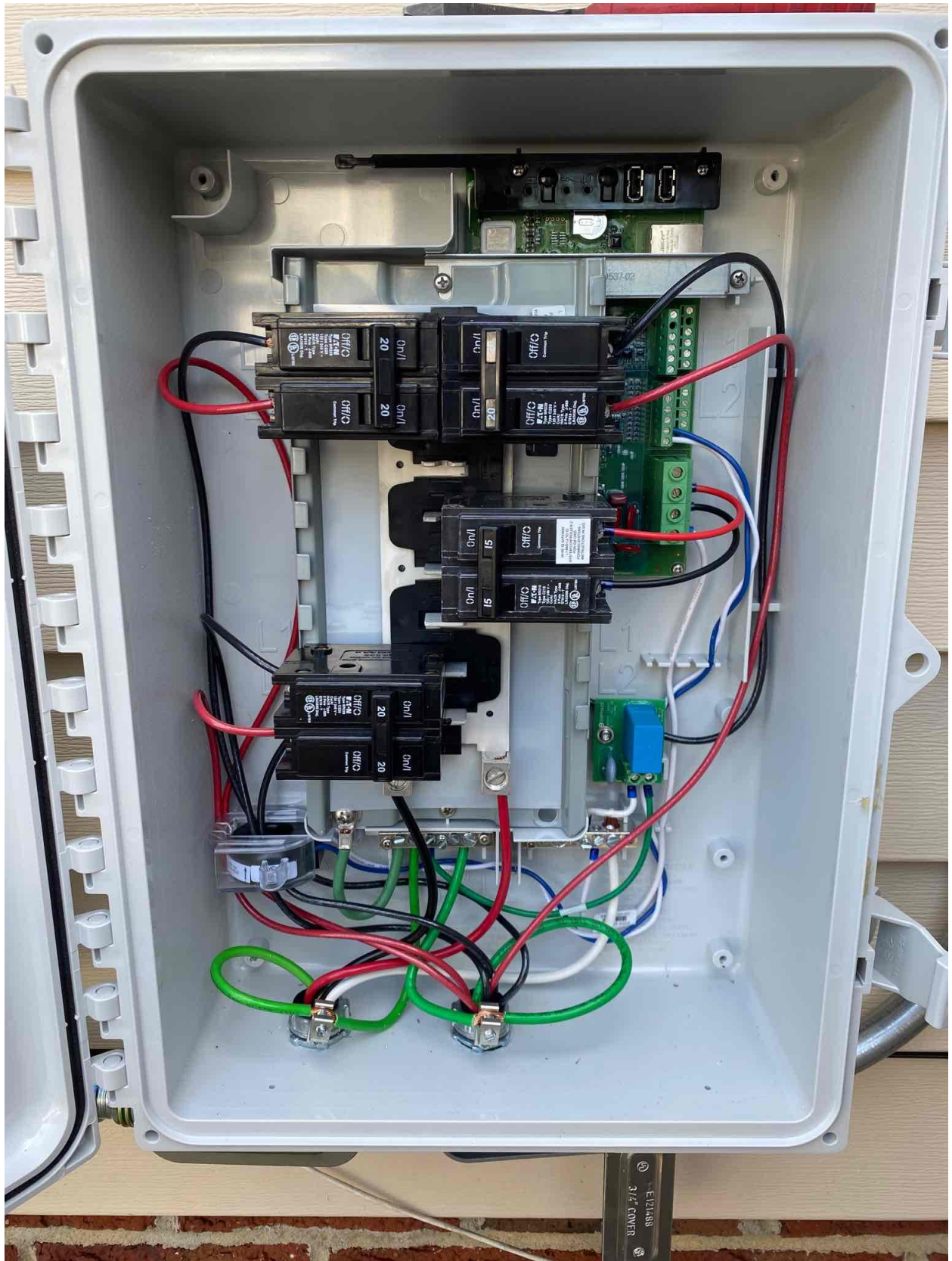
WARNING **ADVERTENCIA** **AVERTISSEMENT**

The warning on a developed and tested...
 About means (Understand) I am not...
 (CAUTION) El uso de este tipo de equipo...
 (DANGER) Les personnes qui ne lisent pas...
 (DANGER) Les personnes qui ne lisent pas...
 (DANGER) Les personnes qui ne lisent pas...

DANGER







IQ Combiner 4

Photovoltaic
Combiner Box
X-IQ-AM1-240-4



Electrical ratings

Voltage 240VAC, 60Hz
DG Breakers 80A MAX (combined)
DG Inputs 64A MAX (combined)
Output 65A MAX, 90A MAX feeder OCPD
Temperature 46°C MAX ambient
For DG breaker, use only Eaton BR series.

202230093122

P/N:

S/N: **202230093122**

883-00356 18 7350

Dedicated solar and DG Combiner Box - do not add loads
10 AMP or 15 AMP IQ Gateway Breaker not used for backfeed

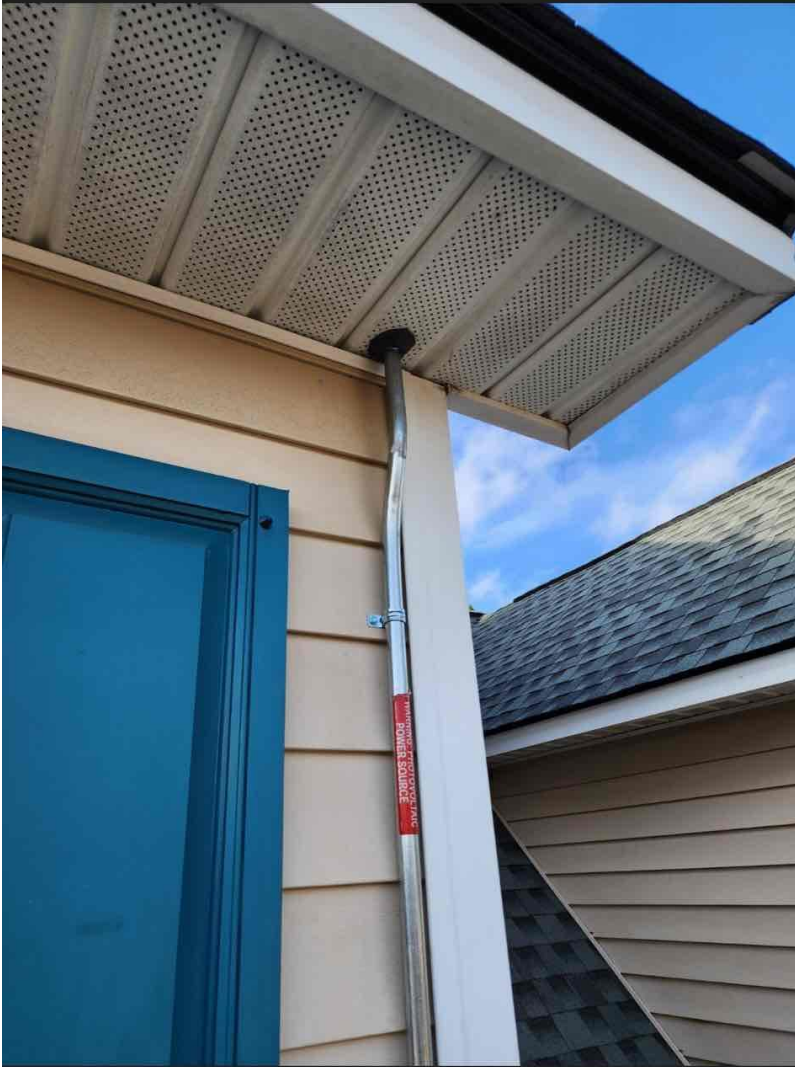
| Connection | Wire sizes | Torque |
|--|-----------------------|--------------------|
| DG Breaker (1, 2, 3, 4) | 14-10 AWG | 2.2 Nm (20 lb-in) |
| | 8 AWG | 2.8 Nm (25 lb-in) |
| | 6-4 AWG | 3.0 Nm (27 lb-in) |
| 60A Circuit Breaker only | 4-1/0 AWG | 5.0 Nm (45 lb-in) |
| IQ Gateway Breaker | 14-10 AWG | 2.26 Nm (20 lb-in) |
| Neutral and ground | | |
| Large Screw 14-1/0 AWG 5.0 Nm (45 lb-in) | Small Screw 8 AWG | 2.6 Nm (23 lb-in) |
| | Small Screw 10-14 AWG | 2.3 Nm (20 lb-in) |
| Small Screw 6 AWG 3.6 Nm (32 lb-in) | 10-4 AWG | 5.0 Nm (45 lb-in) |
| | 3-2/0 AWG | 5.6 Nm (50 lb-in) |
| Main lug | | |

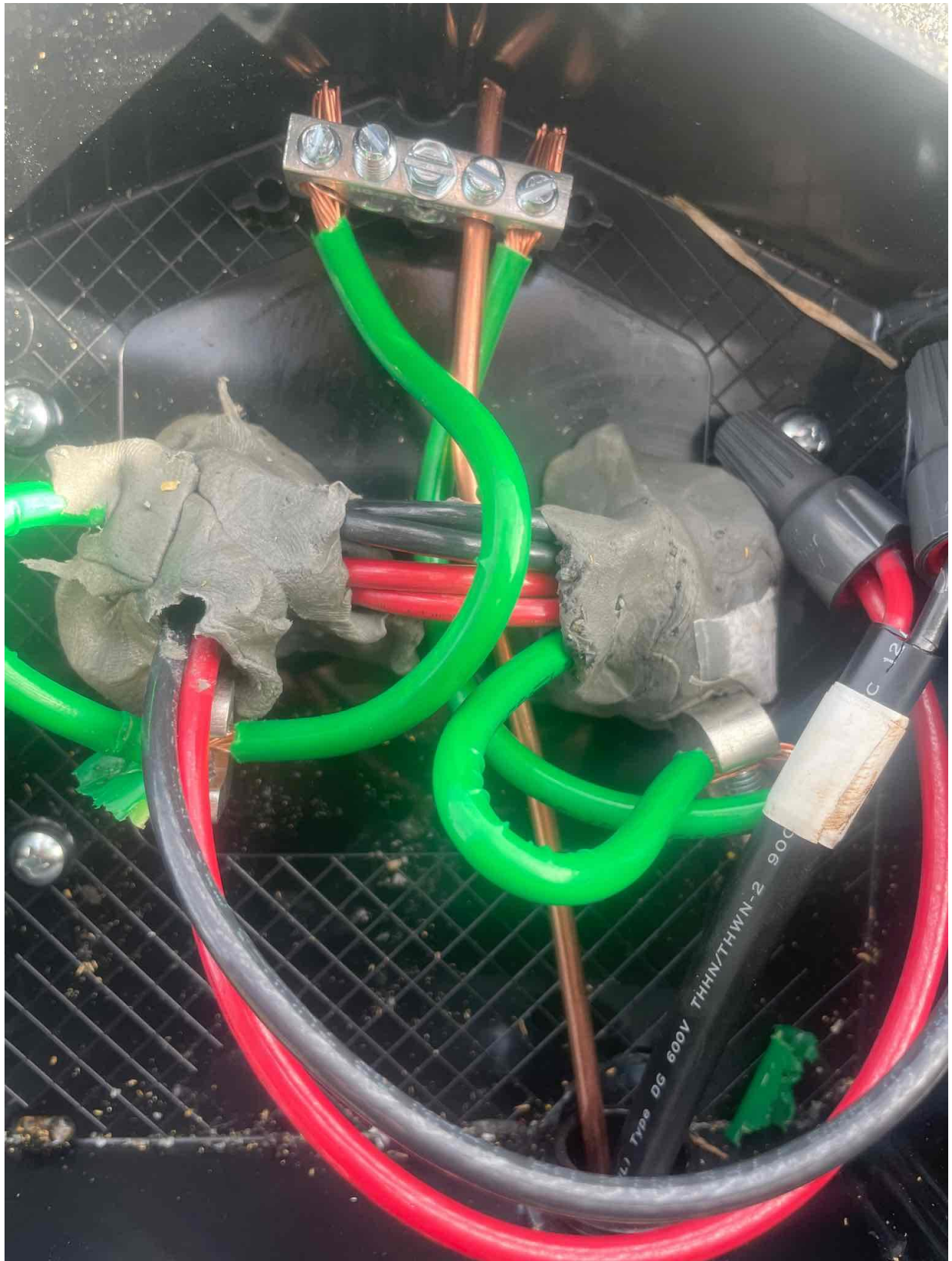
Copper conductors only, rated min. 75°C.
Follow NFPA 70 (NEC), or CSA C22.1 part 1, and all local codes.

For DG Breakers larger than 20A, use wire insulated for 90°C based on 75°C ampacities.

Designed in California and New Zealand
Made in Mexico



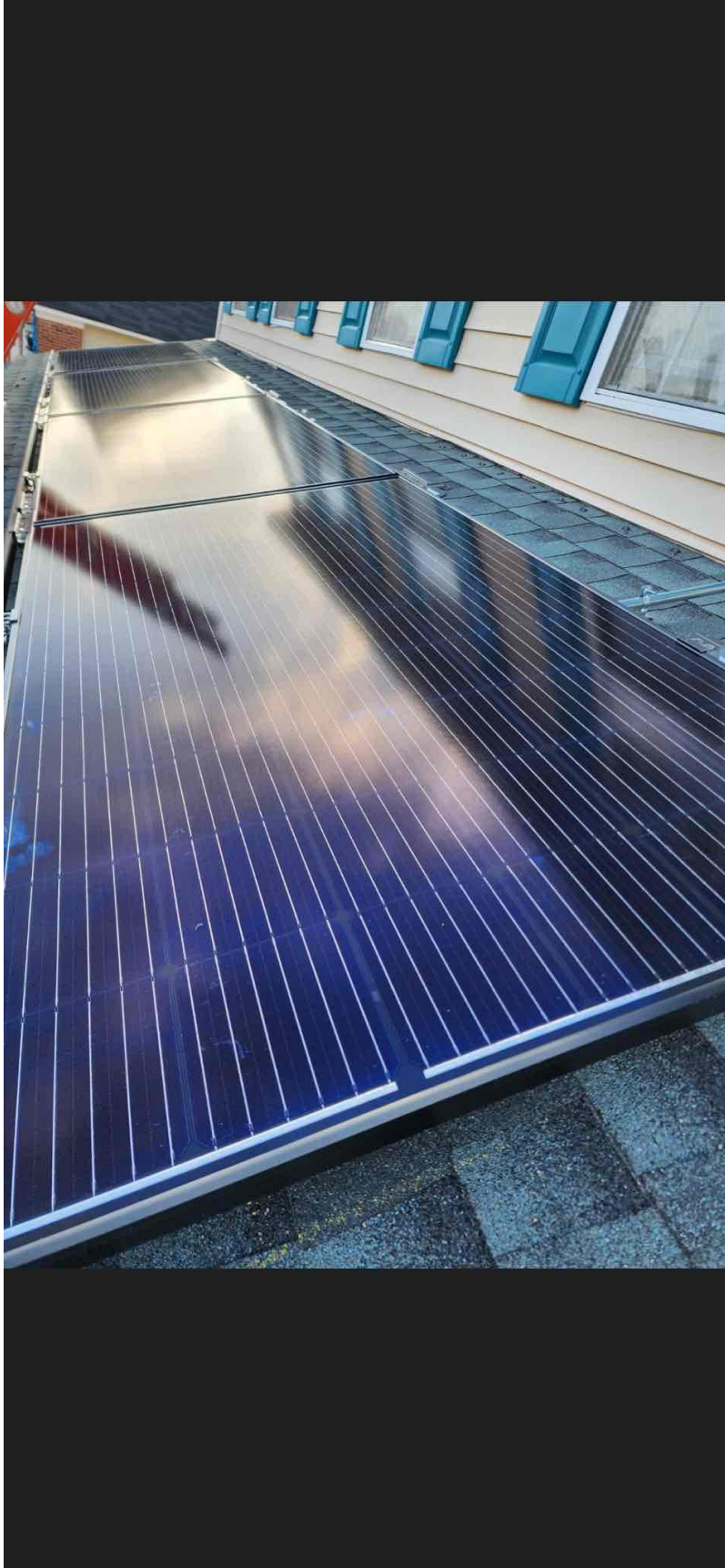






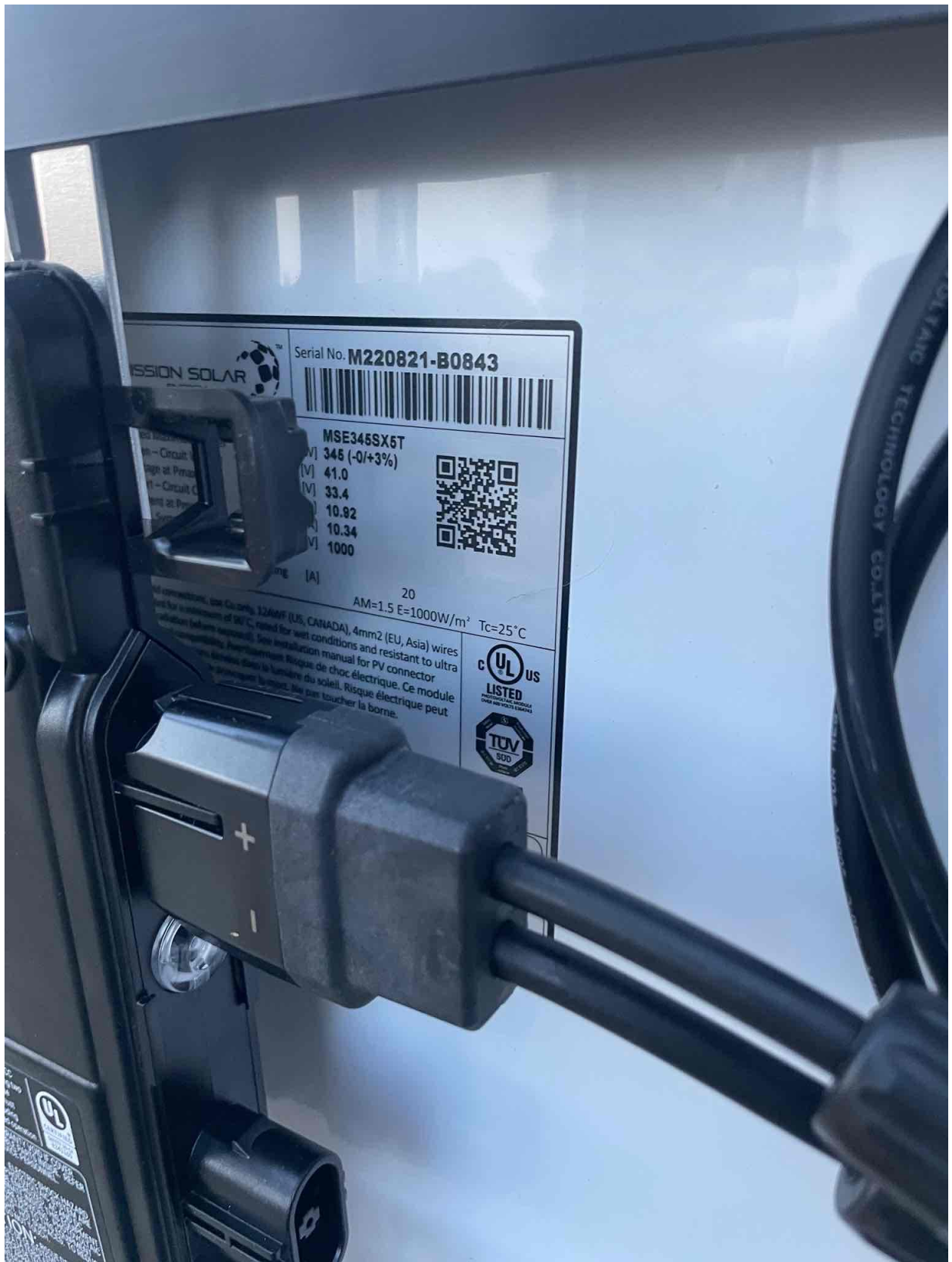












MISSION SOLAR

Serial No. **M220821-B0843**

MSE345SX6T

| | |
|---|--------------|
| V | 345 (-0/+3%) |
| V | 41.0 |
| V | 33.4 |
| V | 10.92 |
| V | 10.34 |
| V | 1000 |

20

AM=1.5 E=1000W/m² Tc=25°C

4mm² (EU, Asia) wires

resistant to ultra

Risque de choc électrique. Ce module

peut être touché par le soleil. Risque électrique peut

être provoqué par le soleil. Ne pas toucher la borne.



DAIICHI TECHNOLOGY CO., LTD.

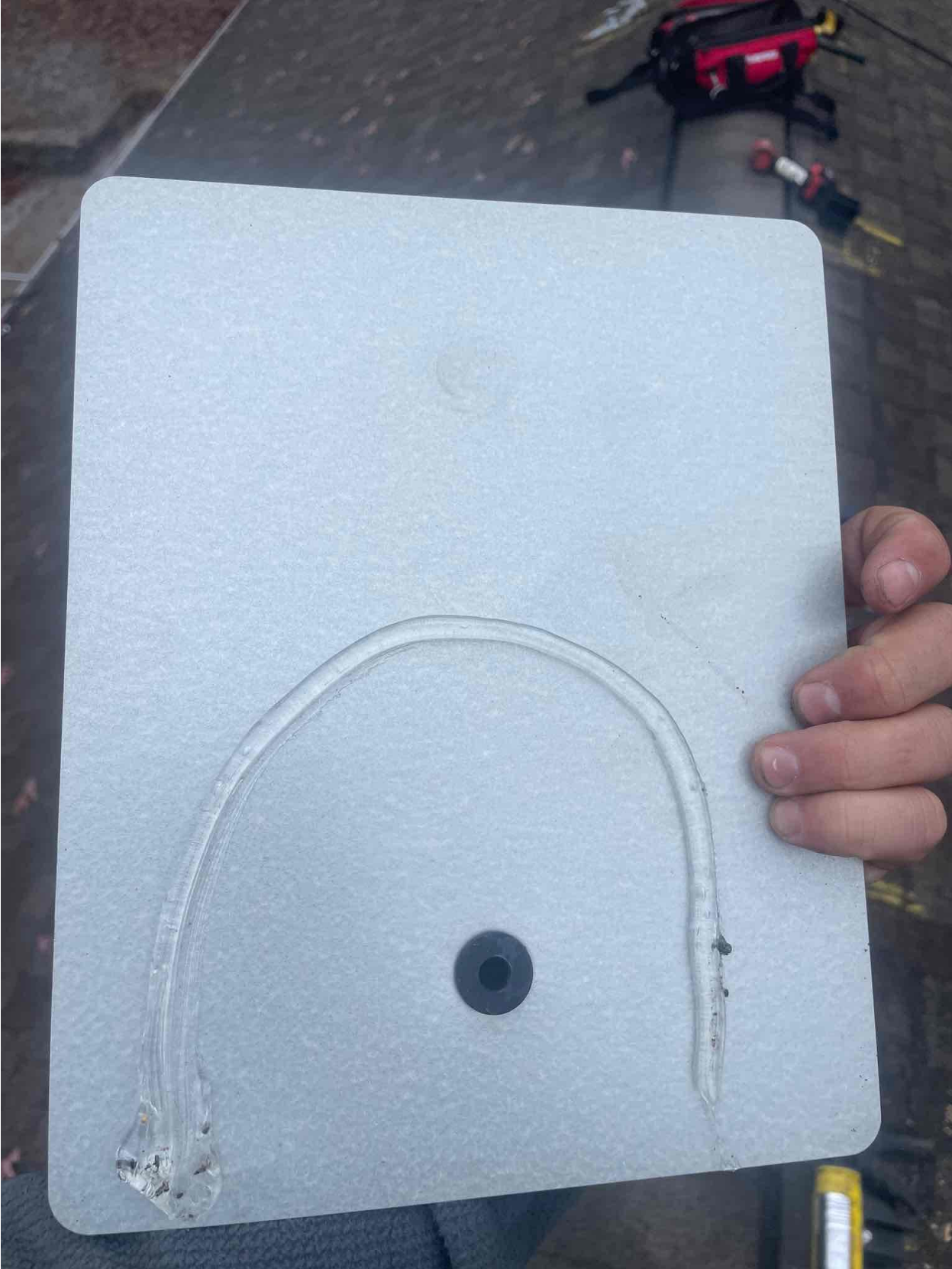
UL LISTED



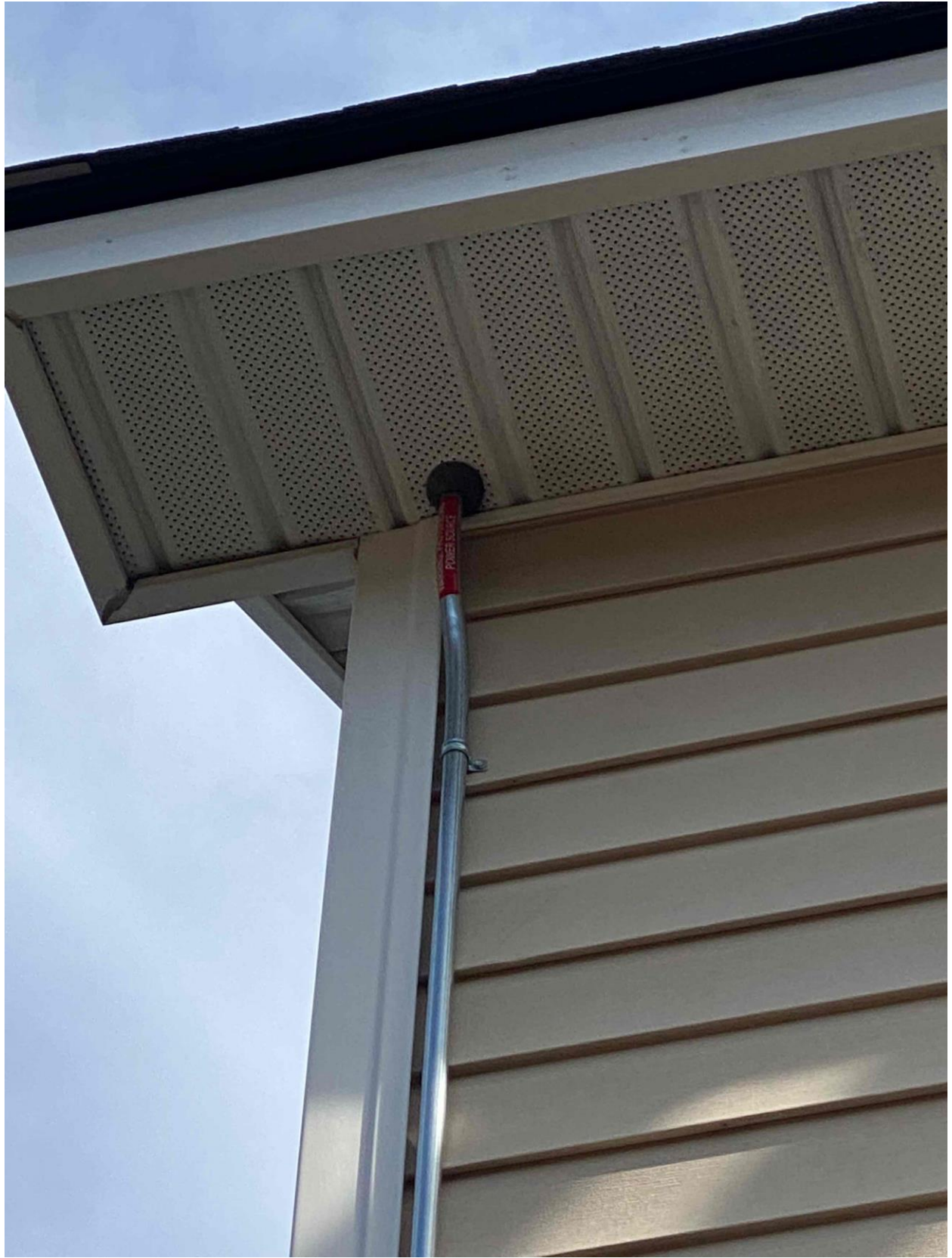
















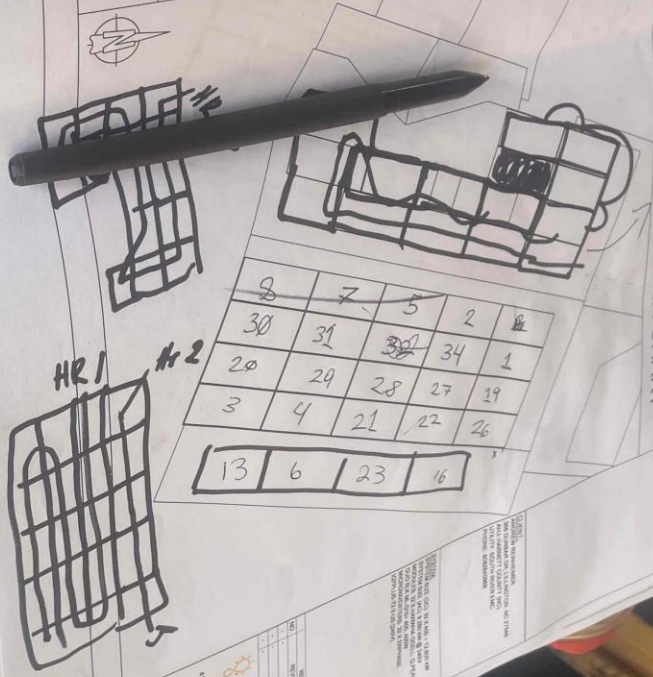




ENPHASE MICROINVERTER CHART

| | | | | | | | | | |
|---|---|---|---|---|---|---|---|---|----|
| 1 | 2 | 3 | 4 | 5 | 6 | 7 | 8 | 9 | 10 |
| 1 | 2 | 3 | 4 | 5 | 6 | 7 | 8 | 9 | 10 |

| | 1-10 | 11-20 | 21-30 | 31-40 | 41-50 | 51-60 |
|---|---|---|---|---|---|---|
| 1 | 482271908 848-81531 2022290818 848-81531 | 482271908 848-81531 2022290818 848-81531 | 482271908 848-81531 2022290818 848-81531 | 482271908 848-81531 2022290818 848-81531 | 482271908 848-81531 2022290818 848-81531 | 482271908 848-81531 2022290818 848-81531 |
| 2 | 482271908 848-81531 2022290818 848-81531 | 482271908 848-81531 2022290818 848-81531 | 482271908 848-81531 2022290818 848-81531 | 482271908 848-81531 2022290818 848-81531 | 482271908 848-81531 2022290818 848-81531 | 482271908 848-81531 2022290818 848-81531 |
| 3 | 482271908 848-81531 2022290818 848-81531 | 482271908 848-81531 2022290818 848-81531 | 482271908 848-81531 2022290818 848-81531 | 482271908 848-81531 2022290818 848-81531 | 482271908 848-81531 2022290818 848-81531 | 482271908 848-81531 2022290818 848-81531 |
| 4 | 482271908 848-81531 2022290818 848-81531 | 482271908 848-81531 2022290818 848-81531 | 482271908 848-81531 2022290818 848-81531 | 482271908 848-81531 2022290818 848-81531 | 482271908 848-81531 2022290818 848-81531 | 482271908 848-81531 2022290818 848-81531 |
| 5 | 482271908 848-81531 2022290818 848-81531 | 482271908 848-81531 2022290818 848-81531 | 482271908 848-81531 2022290818 848-81531 | 482271908 848-81531 2022290818 848-81531 | 482271908 848-81531 2022290818 848-81531 | 482271908 848-81531 2022290818 848-81531 |



freedom
INVERTERS

1500 W. 1500 S. SUITE 100
MOUNTAIN VIEW, CO 80559

800.451.1000
WWW.FREEDOMINVERTERS.COM

WARRANTY CARD

DATE OF PURCHASE: _____
SERIAL NUMBER: _____
INSTALLER: _____

STATION: _____
DATE: _____
TIME: _____



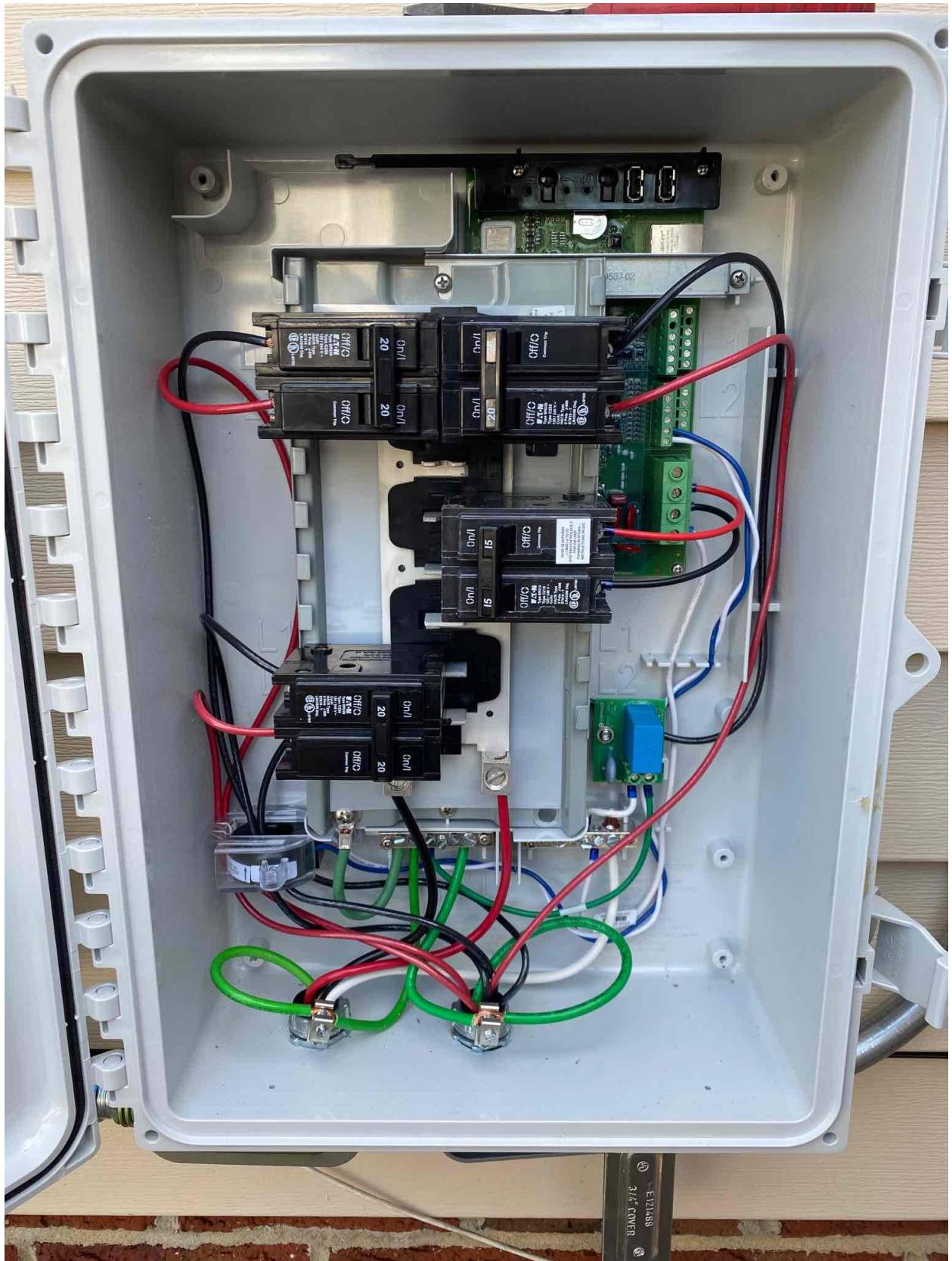


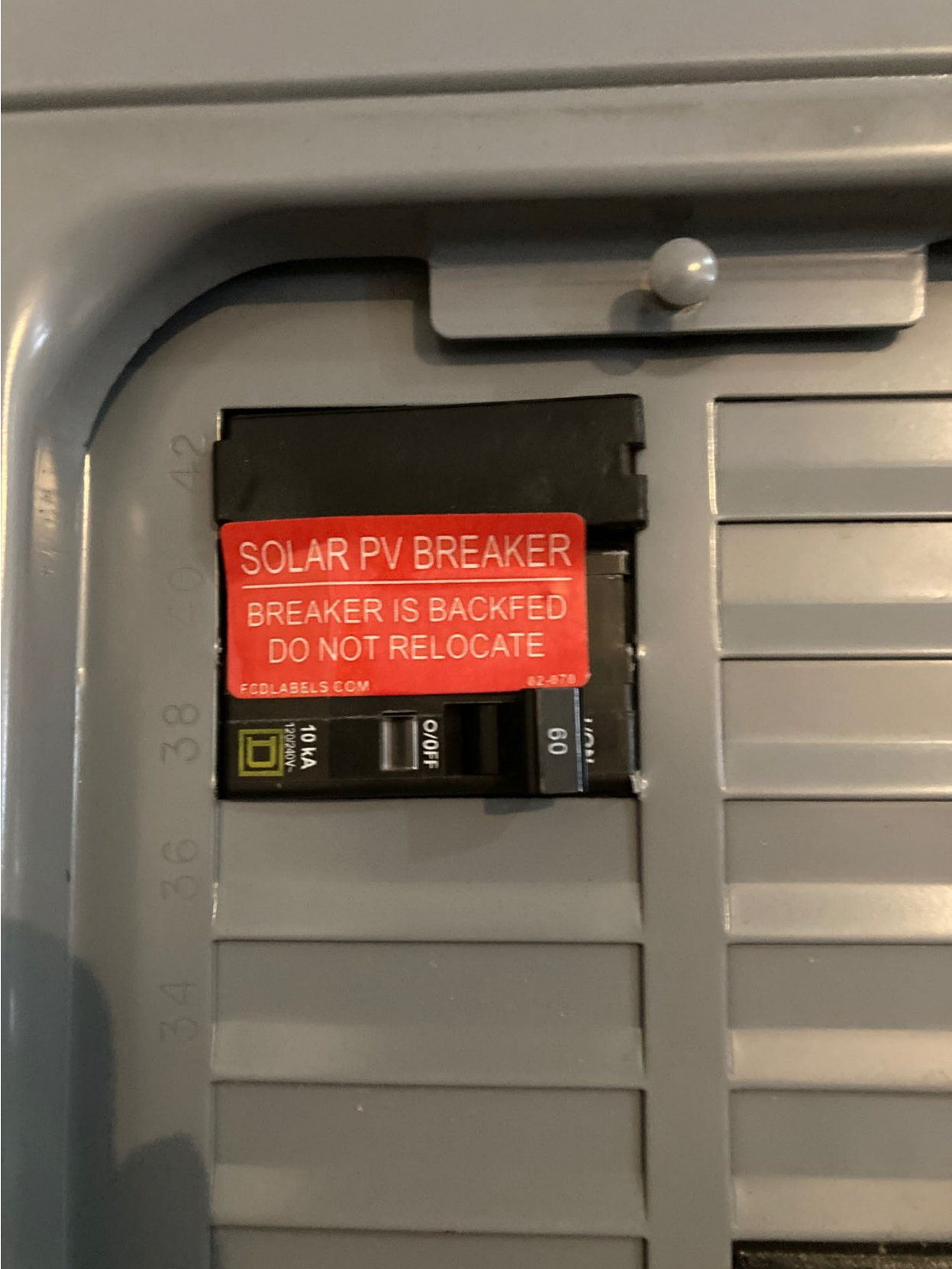












SOLAR PV BREAKER
BREAKER IS BACKFED
DO NOT RELOCATE
FCDLABELS.COM 82-878

10 KA
120/240V

O/OFF

60

34 36 38 40 42



