



NS23A3D01D6158



Model Type : FF-MP-BBB-400

Nominal Maximum Power	(Pmax):	400(0-5)W
Maximum operating Voltage	(Vmp):	31.01V
Maximum operating Current	(Imp):	12.90A
Open Circuit Voltage	(Voc):	37.04(±3%)V
Short Circuit Current	(Isc):	13.79(±3%)A
Maximum System Voltage	:	1500V
Maximum Series Fuse Rating	:	25A
Fire Rating	:	Type 1

All electrical data at Standart Test Conditions (STC): Irradiance of 1000W/m², spectrum AM1.5 and temperature of 25°C.

WARNING - ELECTRIC HAZARD



This solar module produces electrical voltage when exposed to sunlight or intense artificial lights. Proper precautions associated with electrical power systems must be taken while handling and installing this product.

PLEASE READ THE INSTRUCTION MANUAL FOR MORE INFORMATION PRIOR TO INSTALLATION.



Conforms to UL STD
US UL81730-1/-2
UL61215-1/-1-1/-2
Certified to CSA STD
C22.2 #91730-1/-2

Intertek
5019097

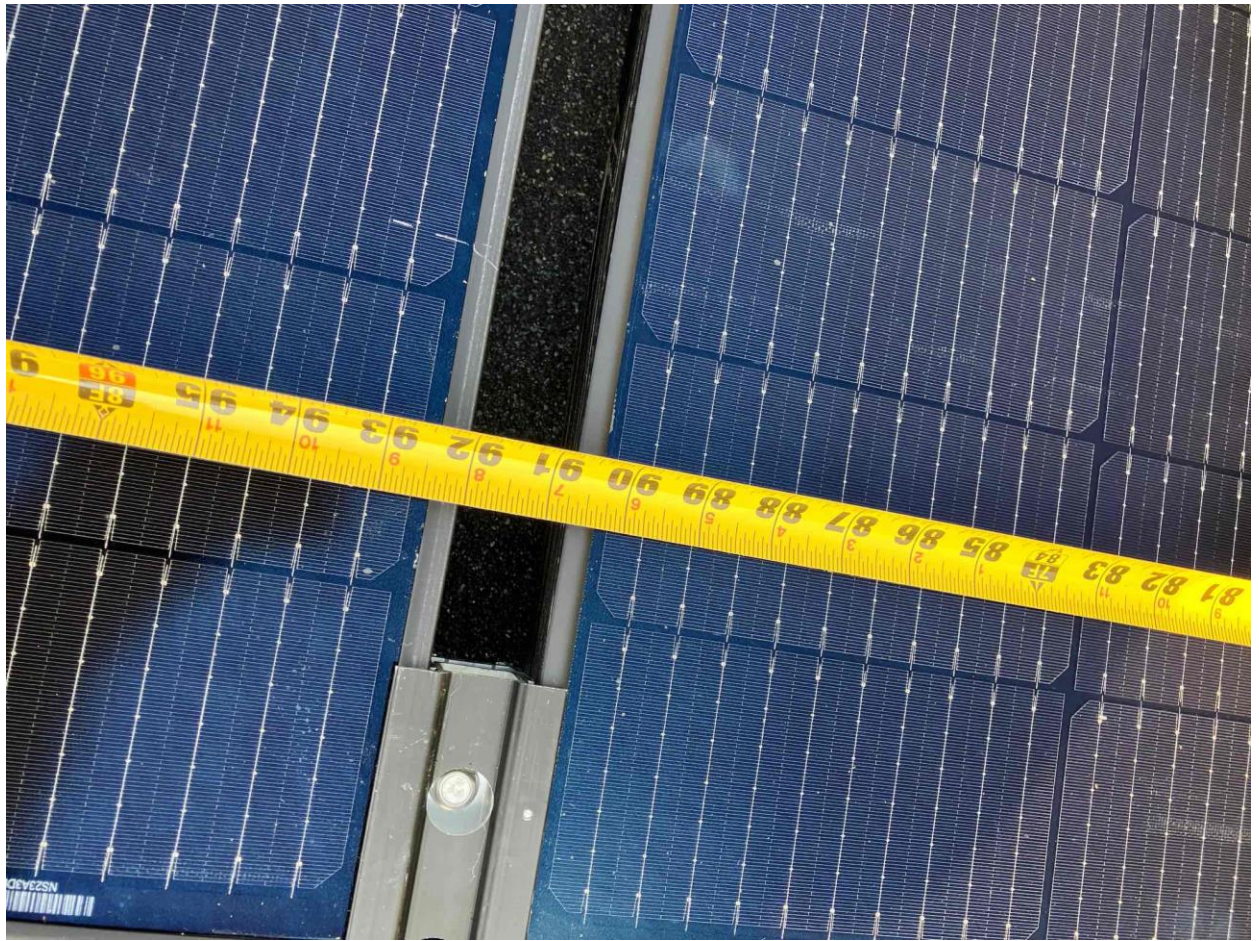
Made in Indonesia















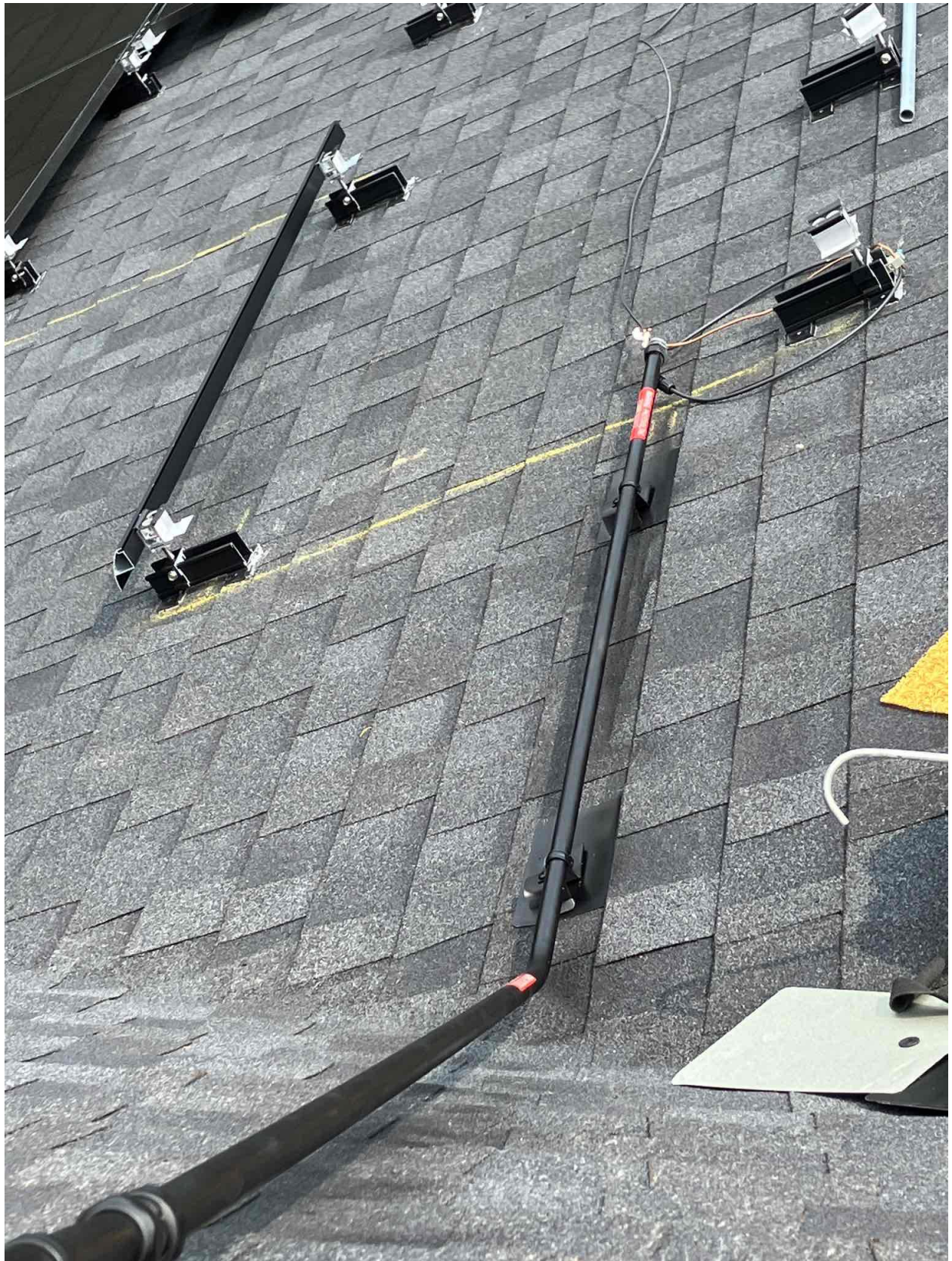


















solar edge

Cellular Plug-in 5y plan, SetApp, Resi, SP4, US

PN: CELL-B-RO5-US-S-S2

SN: SV4722-170905C03-5F

Made in Vietnam



Qty: 1



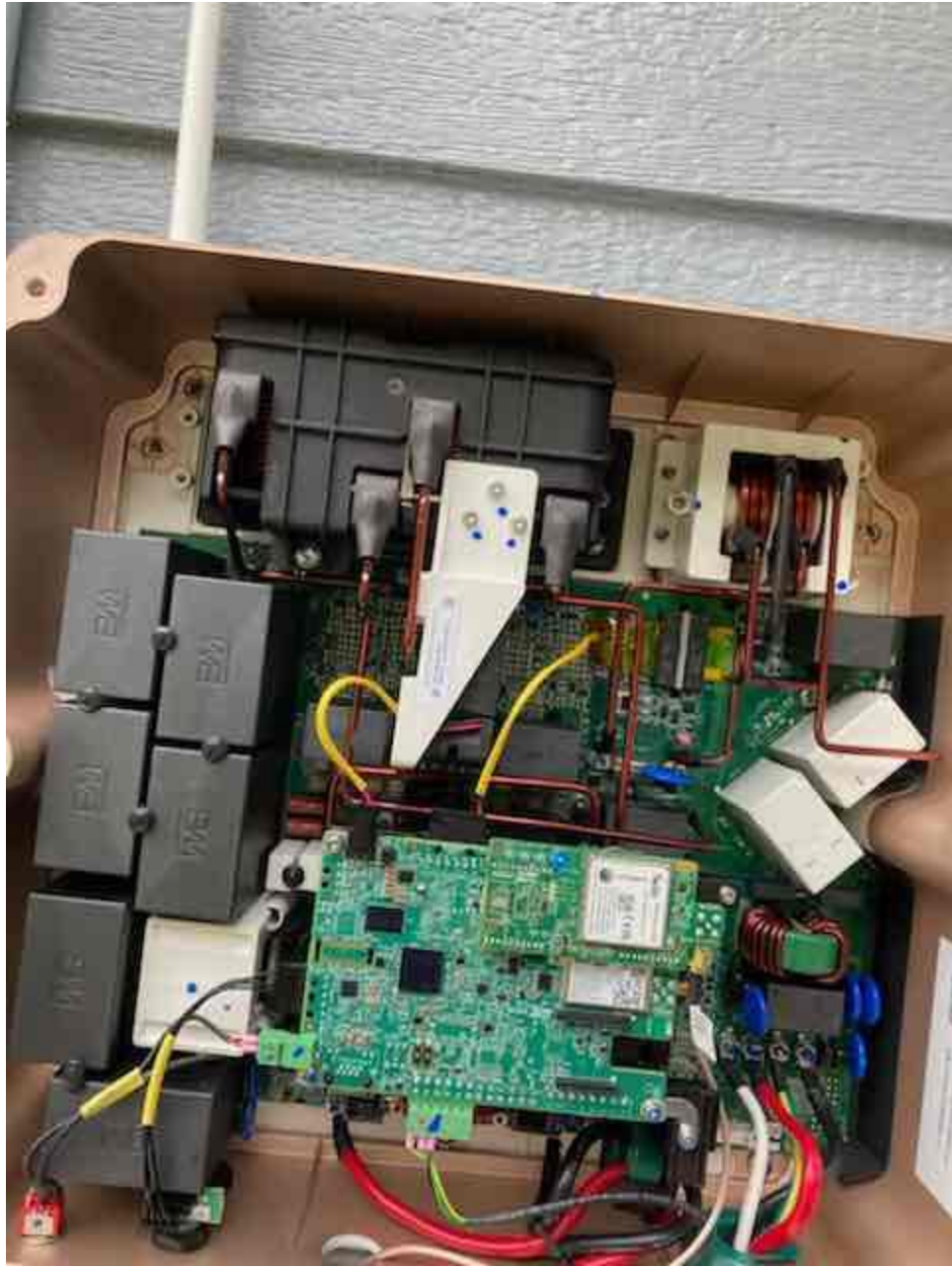
ICCID: 8901882004770079784F



Data plan will start on the earlier of:
- Kit installation date (first transmission)
- Date: 27-Nov-22

Made in Vietnam















freedom

Model: FM-300-180W-40C
300W, 180W, 40C

180W
300W
40C

WARNING - ELECTRICAL HAZARD

Do not touch the solar panel's electrical components.

CE

