

20 On/I
20 On/I
20 Off/O Common Trip
20 On/I
20 On/I
20 Off/O Common Trip

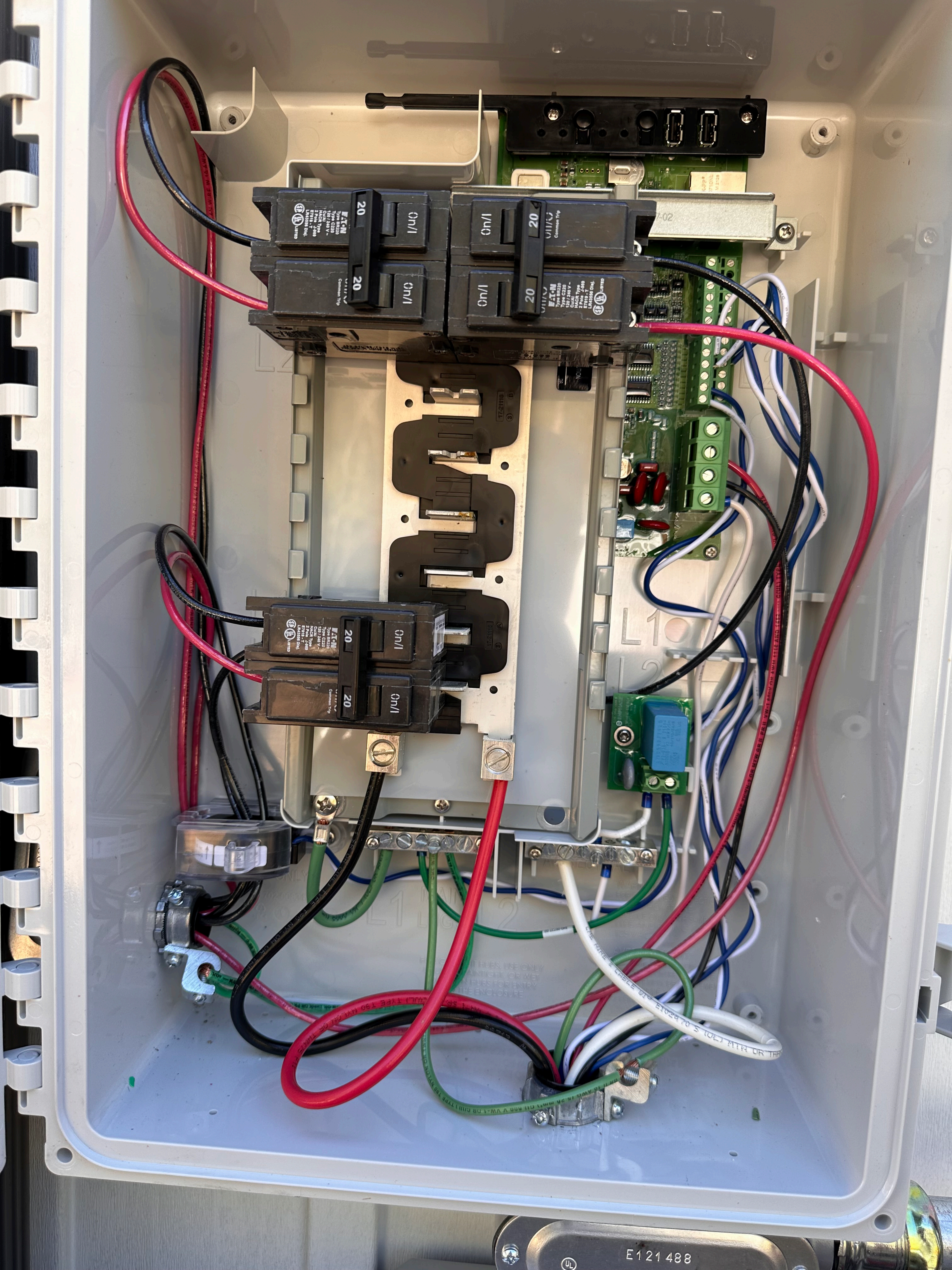
00537-02

20 On/I
20 On/I

Terminal strip with multiple screw terminals for wire connections.

DO NOT TOUCH THE BOARD OR WIRING
IF THE ENCLOSURE IS OPEN
OR THE POWER IS ON

WIRE TYPE 18 AWG 15.24 mm Ø 1.02 mm
WIRE TYPE 19 AWG 14.28 mm Ø 0.91 mm
WIRE TYPE 20 AWG 12.70 mm Ø 0.81 mm
WIRE TYPE 22 AWG 9.14 mm Ø 0.61 mm
WIRE TYPE 24 AWG 6.35 mm Ø 0.41 mm
WIRE TYPE 26 AWG 4.78 mm Ø 0.30 mm
WIRE TYPE 28 AWG 3.18 mm Ø 0.20 mm
WIRE TYPE 30 AWG 2.54 mm Ø 0.15 mm
WIRE TYPE 32 AWG 1.90 mm Ø 0.10 mm
WIRE TYPE 34 AWG 1.27 mm Ø 0.07 mm
WIRE TYPE 36 AWG 0.91 mm Ø 0.05 mm
WIRE TYPE 38 AWG 0.64 mm Ø 0.04 mm
WIRE TYPE 40 AWG 0.51 mm Ø 0.03 mm
WIRE TYPE 42 AWG 0.41 mm Ø 0.02 mm
WIRE TYPE 44 AWG 0.33 mm Ø 0.015 mm
WIRE TYPE 46 AWG 0.25 mm Ø 0.01 mm
WIRE TYPE 48 AWG 0.20 mm Ø 0.008 mm
WIRE TYPE 50 AWG 0.15 mm Ø 0.006 mm
WIRE TYPE 52 AWG 0.10 mm Ø 0.004 mm
WIRE TYPE 54 AWG 0.07 mm Ø 0.003 mm
WIRE TYPE 56 AWG 0.05 mm Ø 0.002 mm
WIRE TYPE 58 AWG 0.04 mm Ø 0.0015 mm
WIRE TYPE 60 AWG 0.03 mm Ø 0.001 mm



ATOU
Type BR220
10A
120V AC
2 Pole
20A
Common Trip
20
On/I
I/O
20
ATOU
Type CR220
10A
120V AC
2 Pole
20A
Common Trip
20
On/I
I/O
20

ATOU
Type BR220
10A
120V AC
2 Pole
20A
Common Trip
20
On/I
I/O
20
ATOU
Type CR220
10A
120V AC
2 Pole
20A
Common Trip
20
On/I
I/O
20

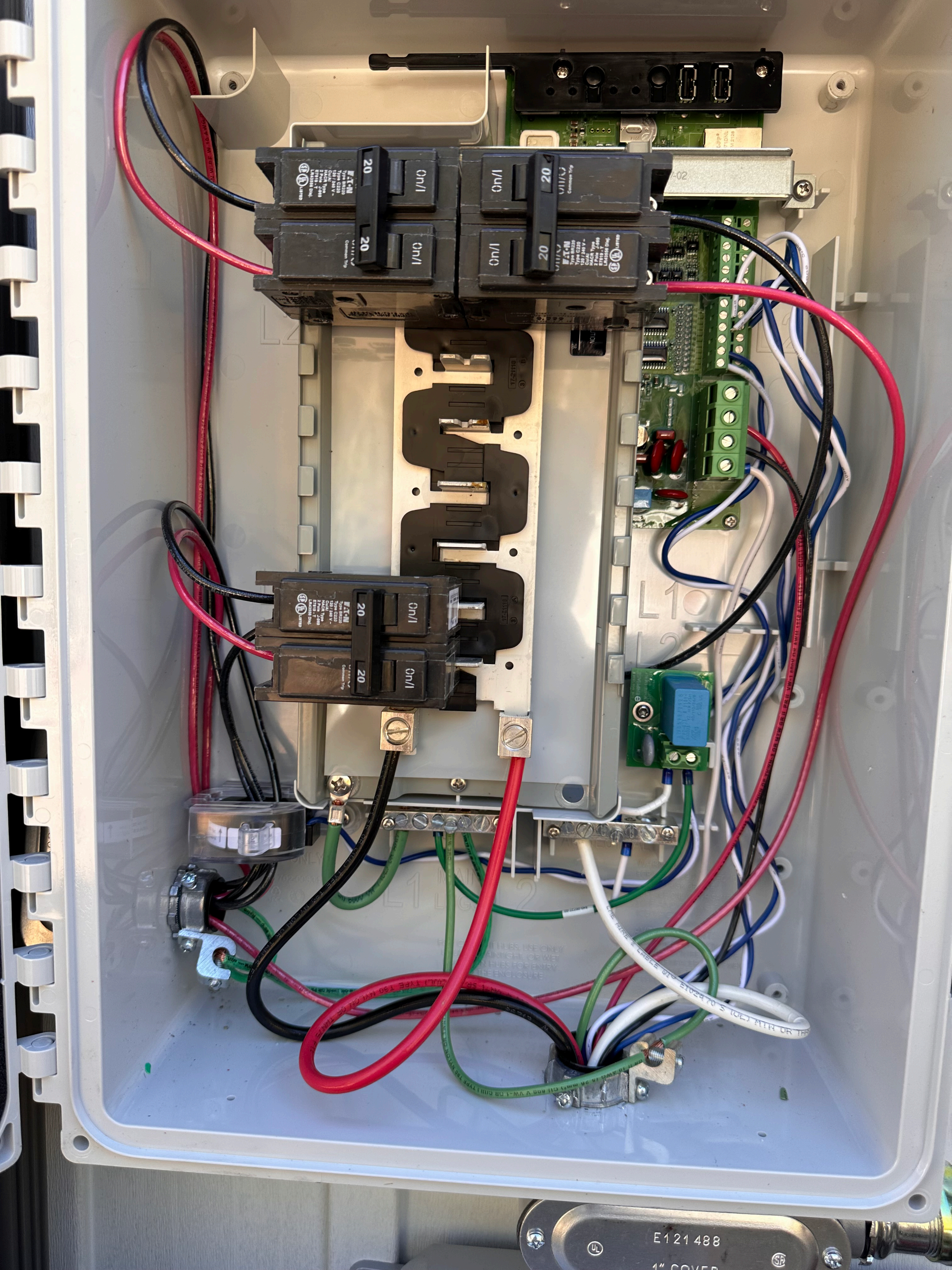
7-02

1

1
2

THIS IS THE ONLY
PLACE TO MAKE
CHANGES TO THE
WIRING FOR ENTRY
ENCLOSURE

E121488



Four Eaton 20A circuit breakers are mounted in a row. Each breaker has a handle labeled "On/I" and "1/40". The breakers are labeled "20" and "Eaton" with technical specifications including "Type BR220", "Type C220", "125°C", "100% Icu", "100% Ics", "100% Icu", "100% Ics", "100% Icu", "100% Ics".

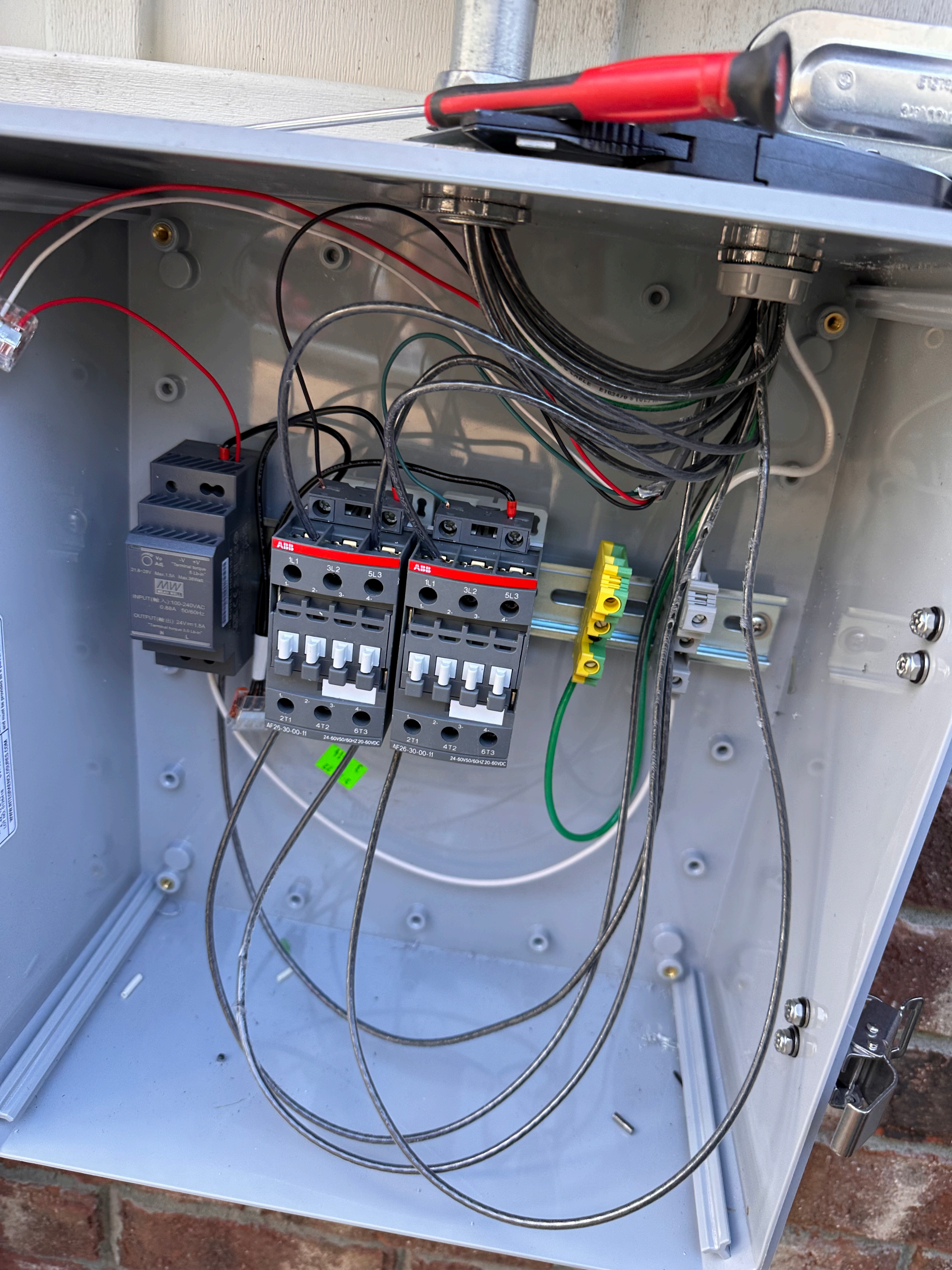
Two Eaton 20A circuit breakers are mounted in a row. Each breaker has a handle labeled "On/I" and "20". The breakers are labeled "20" and "Eaton" with technical specifications including "Type BR220", "Type C220", "125°C", "100% Icu", "100% Ics", "100% Icu", "100% Ics".

A fuse block containing a single fuse. The fuse is labeled "10A" and "10A". The fuse block is mounted on a metal terminal block.

A metal terminal block with several screw terminals. Wires are connected to the terminals, including a red wire, a black wire, and a green wire.

A blue fuse mounted on a green terminal block. The fuse is labeled "10A" and "10A". The terminal block is mounted on a green PCB.

A metal cover plate with the text "E121488" and "1" COVER". The cover plate is mounted on a metal surface.

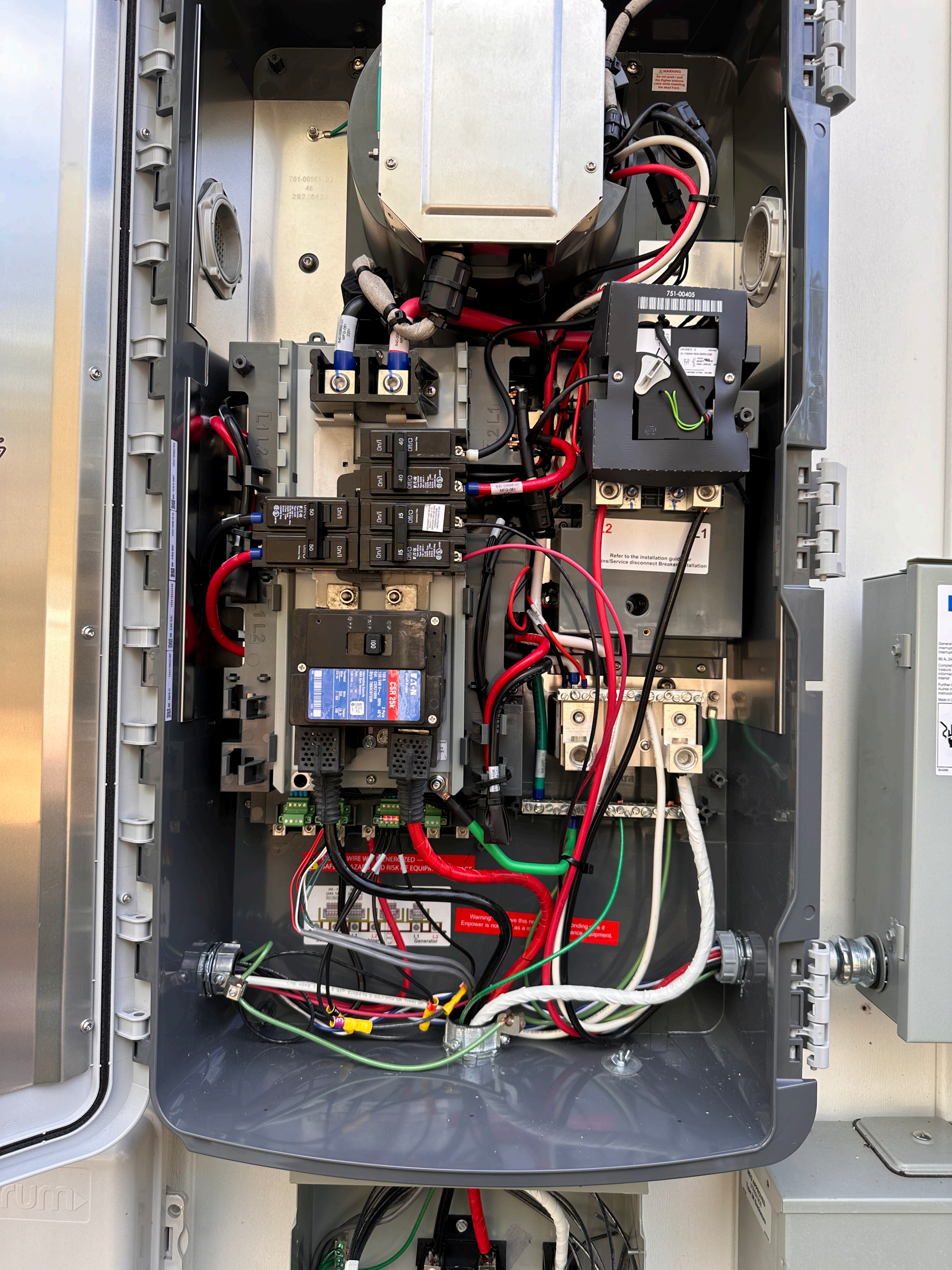


No. \pm V \pm V
Adj. Terminal torque
6 LB-in
21.8-29V Max. 1.5A Max. 30Watt
MMW
MAGNETIC WELLS
INPUT (輸入): 100-240VAC
0.88A 50/60Hz
OUTPUT (輸出): 24V=1.5A
Terminal torque 3.0 LB-in
M L

ABB
1L1 3L2 5L3
1 2 3 4
2T1 4T2 6T3
AF26-30-00-11 24-50V50/60HZ 20-60VDC

ABB
1L1 3L2 5L3
1 2 3 4
2T1 4T2 6T3
AF26-30-00-11 24-50V50/60HZ 20-60VDC

WARNING: ELECTRICAL SHOCK HAZARD
Do not touch any wires or components inside the panel
unless you are qualified to do so.
MAGNETIC WELLS



701-00561 02
46
202 20423

WARNING
Do not touch the
the Engine exhaust
cable while installing
the dead front.

751-00405

2
1
Refer to the installation guide for
ins/Service disconnect Breaker installation

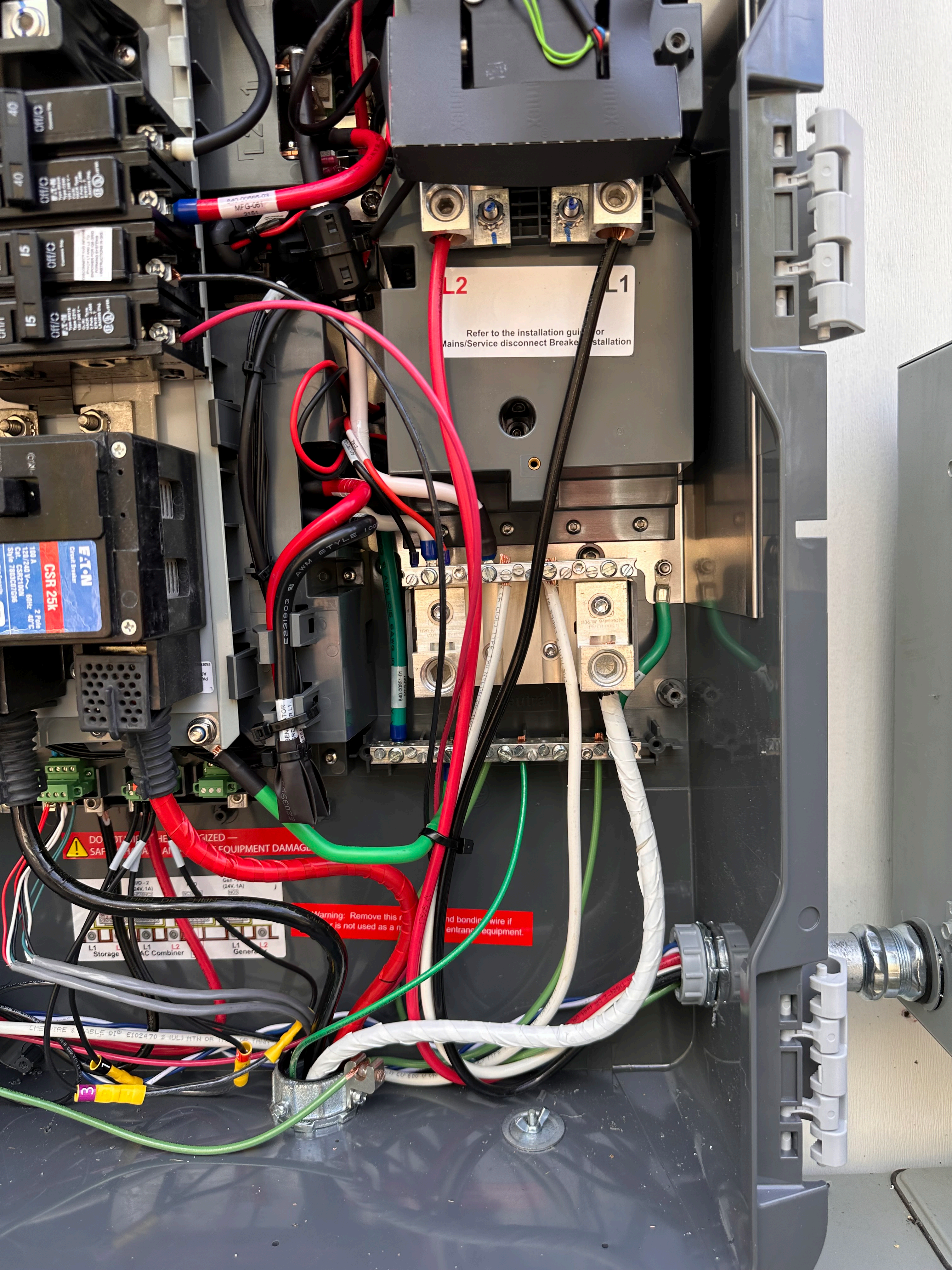
WIRE W/ENERGIZED -
SAFETY HAZARD AND RISK OF EQUIPMENT DAMAGE

Warning:
Energizer is not to be used as a replacement for the original equipment.

L1
L2
Generator

General
Interrupt
80 A, 24
Complet
Ventura
Informac
Further
Autis is
Instruc
Made in

rum

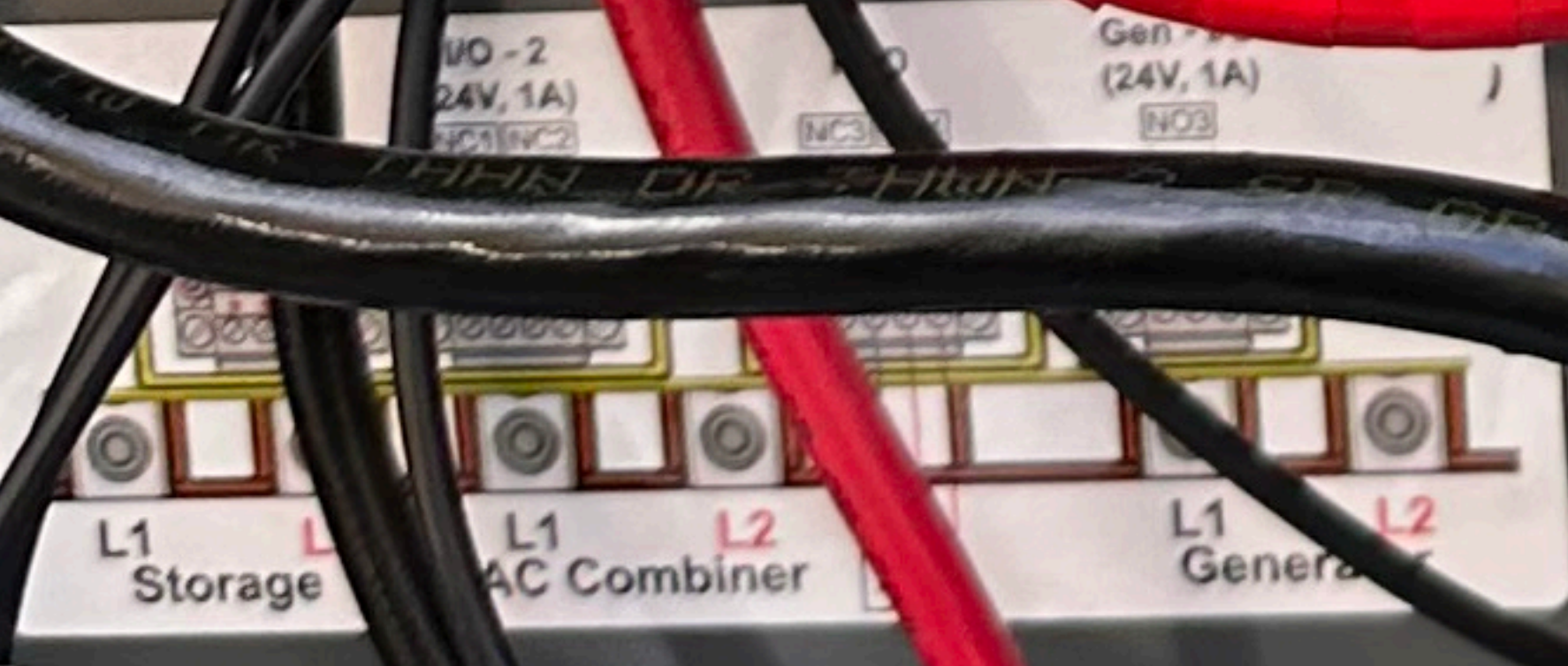


L2 L1
Refer to the installation guide for
Mains/Service disconnect Breaker installation

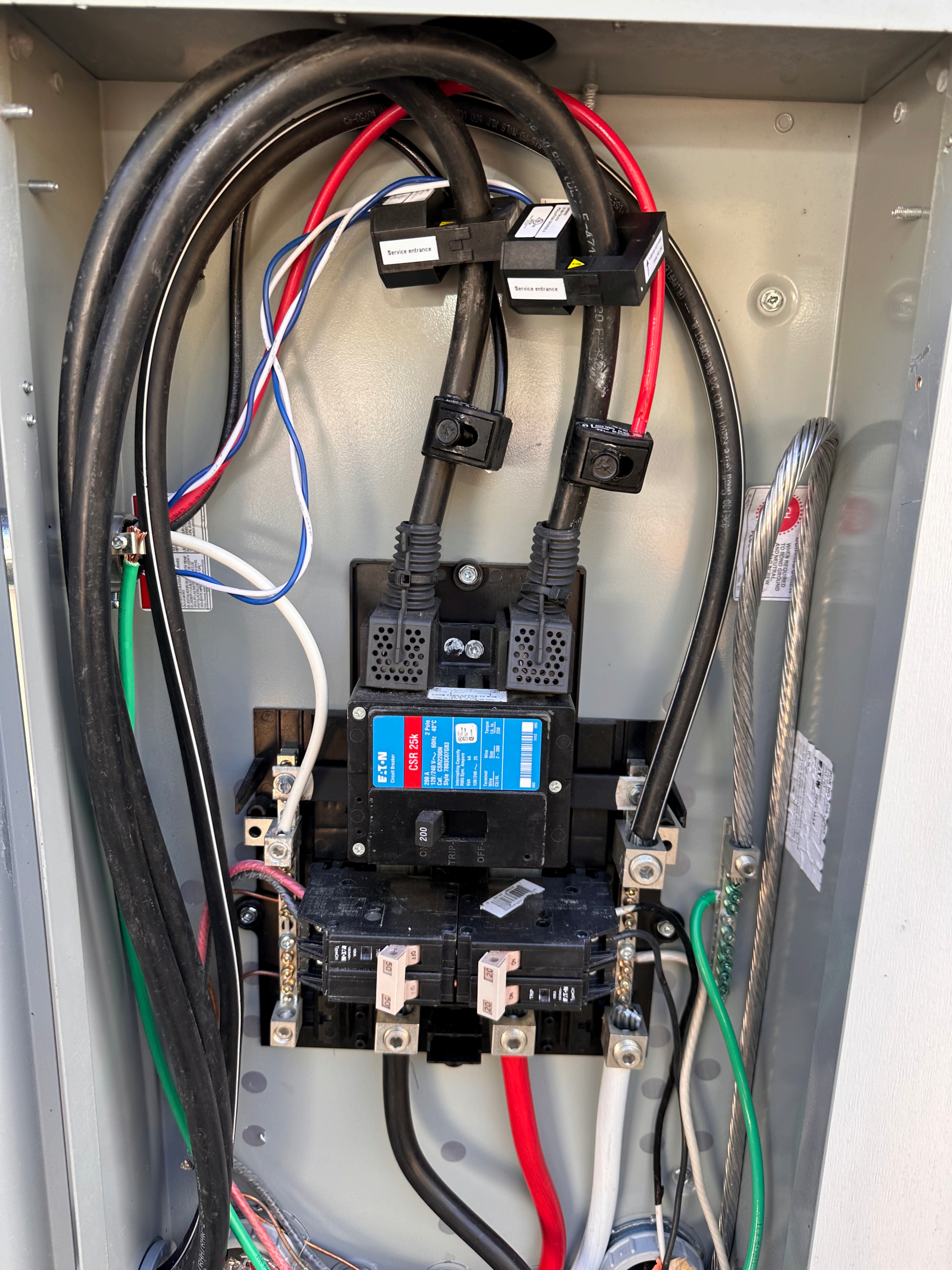
EATON
CSR 25k
100 A
120/240 V
2 Pole
Circuit Breaker
Style 783C170S5
60Hz 48°C

DO NOT OPERATE THE EQUIPMENT UNLESS THE SAFETY LABELS ARE IN PLACE TO PREVENT EQUIPMENT DAMAGE

Warning: Remove this ... and bonding wire if ... equipment.



CHEMREX CABLE 010 E102470 S (UL) HTH OR



Service entrance

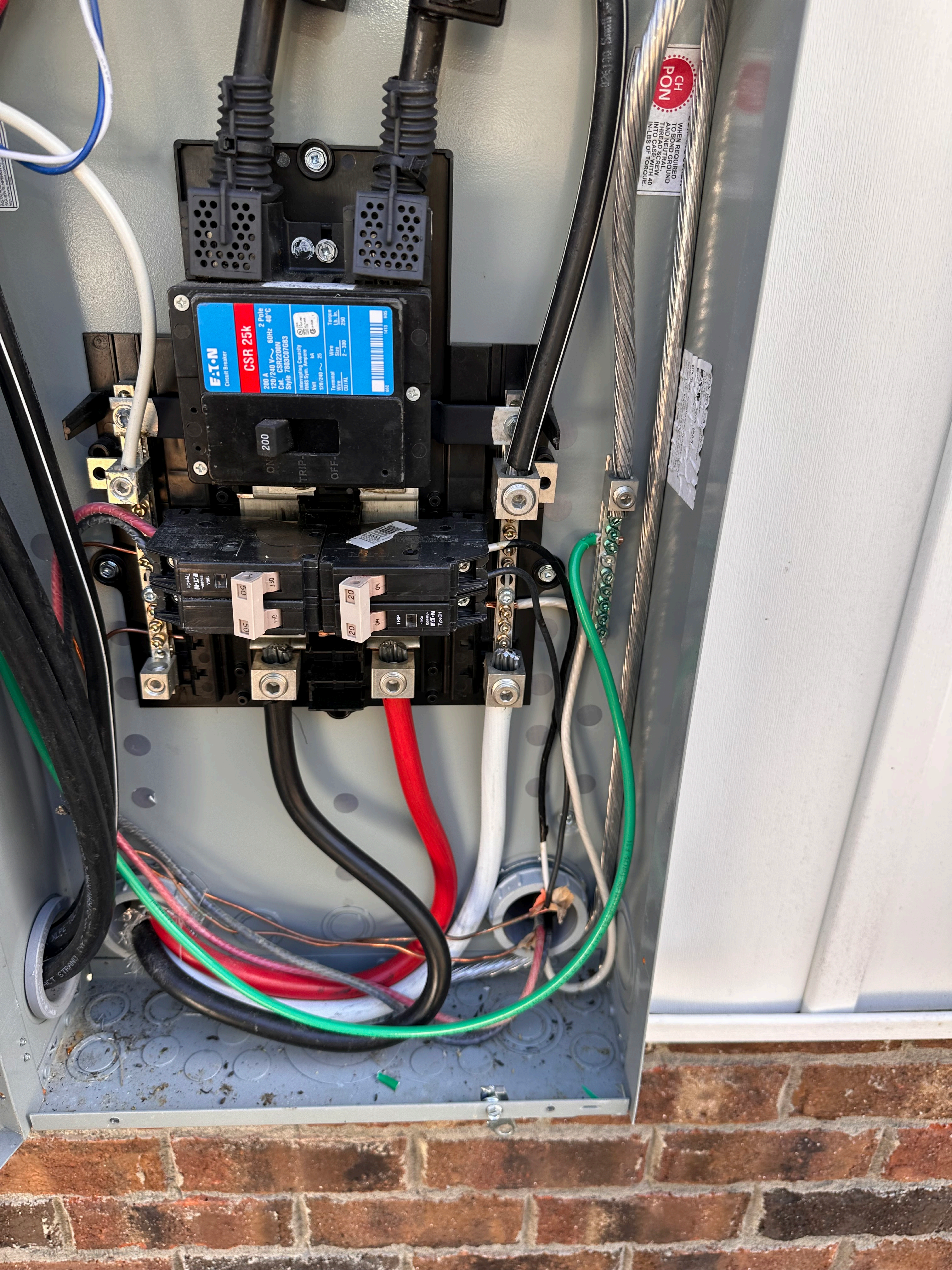
Service entrance

E-T-N
Circuit Breaker
CSR 25k
2 Pole
100 A
120/240 V ~ 60Hz 40°C
Cdn. CSR2200N
S/N# 188000783
Interrupting Capacity
100 kA @ 120 V
100 kA @ 240 V
100 kA @ 15
Trip
100 A
2-200
UL
100 305

WHEN REQUIRED TO AND GROUND AND NEUTRAL

105

120



EATON
Circuit Breaker
CSR 25k
2 Pole
200 A
120/240 V ~ 60Hz 40°C
Cat. CSR2200N
Style 7800C07683

Integrating Capacity	Wire Size	Torque
1000 A	2 - 300	1.5 - 2.5
120/240 V ~ 25	CU/AL	2 - 300

1413 100

200

TRIP-
ON OFF

100A Type CH
100A
120/240 V ~ 60Hz 40°C
Type CH

100A
120/240 V ~ 60Hz 40°C
Type CH

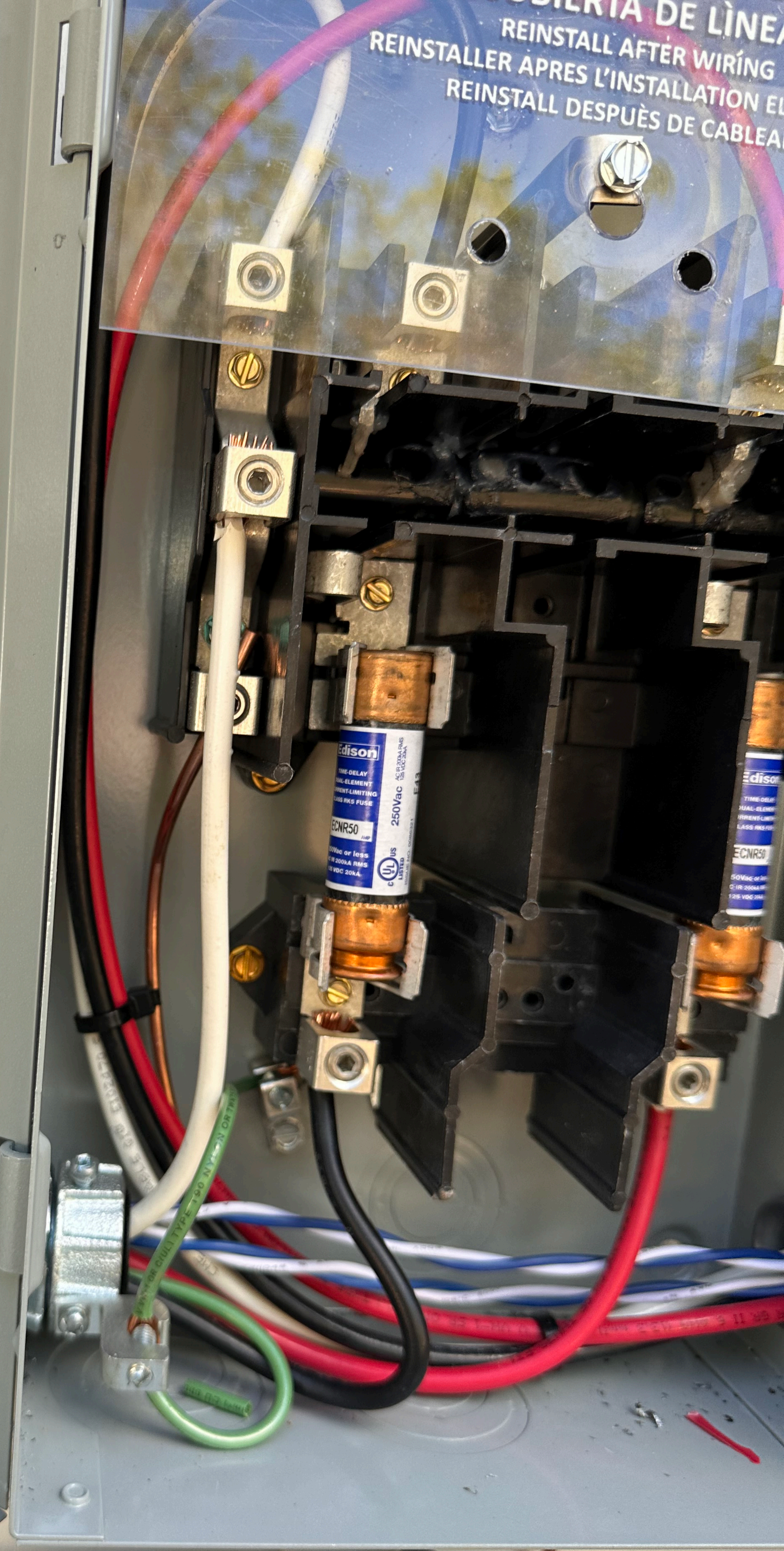
CH
PON

WHEN REQUIRED
TIGHTEN TO
SPECIFIED TORQUE
WITH 40
IN-LBS OF TORQUE.

REINSTALL AFTER WIRING
REINSTALL APRES L'INSTALLATION EL
REINSTALL DESPUES DE CABLEA

UL LISTED
ENCLOSED SWITCH
INTERRUPTOR EN GABINETE
INTERRUPTEUR SOUS COFFRET
ISSUE NO. AL-72
NOM-367-AMC

Solo para sistemas con fase a tierra en fase B.
Adecuado para usarse como equipo de acometida
con un corriente máxima de fusible de 60 amperios.
La potencia de arranque de motores con capacidad mayor a los caballos
de potencia estándar puede requerir del uso de fusibles con
características de retardo de tiempo apropiadas.
El fusible empleado, con excepción de los circuitos de motores,
debe ser para usarse en circuitos capaces de entregar no más de 100
000 A RCM simétricos, con 240 V ~ máximo, cuando se utilizan fusibles
clase R. El juego adaptador de fusibles DS16FK se requiere para
fusibles clase R.
ELIGRO - a menos que se utilicen fusibles clase R, este interruptor
puede presentar riesgos de incendio y daño personal si es instalado en
circuitos con capacidad de entregar más de 10 000 A RCM simétricos.
Cuando se utiliza con fusibles clase K o H, es adecuado para usarse en
circuitos con capacidad de entregar no más de 10 000 A RCM simétricos,
con 240 V ~ máximo.
La experiencia muestra que los fusibles renovables pueden causar
problemas de sobrecalentamiento, por lo tanto, el uso de fusibles
renovables no es recomendable.
Usar conductores para 60°C o 75°C.
Torque de apriete de terminales / Tornillo de cabeza hexagonal / 3.97 mm /
1.5 N.m
Largo de la sección transversal del conductor
L = 170 AWG, 2.1 a 63.5 mm² AL - CU
Seulement pour des systèmes de phase B MALT.
Approprié comme équipement d'entrée de service
avec un calibre maximum du fusible 60A.
L'intensité de démarrage des moteurs plus élevée que pour les
"horsepower" standards peut exiger l'utilisation de fusibles ayant des
caractéristiques de temporisation appropriées.
Toute charge continue ne devra pas excéder 80% du calibre des fusibles
utilisés sauf si il s'agit de circuits de moteurs.
Convient à un circuit de 100,000 ampères efficaces symétriques au plus,
240 V ~ maximum, lorsque des fusibles de classe R sont utilisés.
Ensemble de fusible DS16FK requis pour fusibles R, cet interrupteur
peut présenter des risques d'incendie et de blessures corporelles s'il est
installé dans un circuit de plus de 10,000 ampères efficaces symétriques.
Si utilisé avec des fusibles K ou H, l'interrupteur sera approprié pour
un circuit ne délivrant pas plus de 10,000 ampères RMS
utilisant sur un circuit.
L'expérience démontre que l'utilisation de fusibles renouvelables peut
causer des problèmes de surchauffe et, par conséquent, ces fusibles ne
sont pas recommandés.
Utiliser conducteurs 60°C ou 75°C.
Torque aux bornes / Vis à tête six pans / 5/32" / 100 Lb. - Po.
L = 170 AWG, 2.1 a 63.5 mm² AL - CU



ALLEGRO

WARNING

DANGER

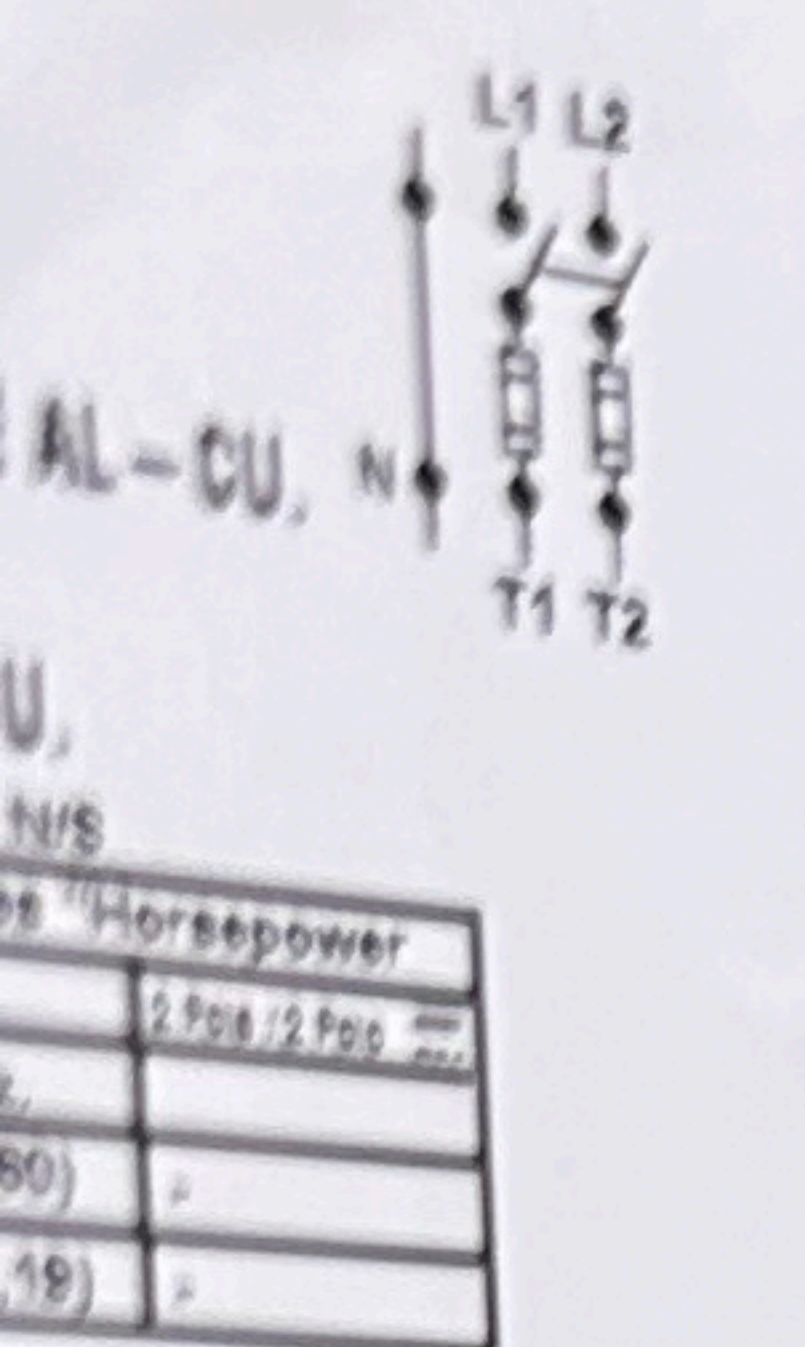
ENCLOSURE SWITCH
 INTERRUPTOR EN GABINETE
 INTERRUPTEUR SOUS COFFRET

ISSUE NO. AL-72

UL LISTED

ENCLOSED SWITCH
 INTERRUPTOR EN GABINETE
 INTERRUPTEUR SOUS COFFRET
 ISSUE NO. AL-72

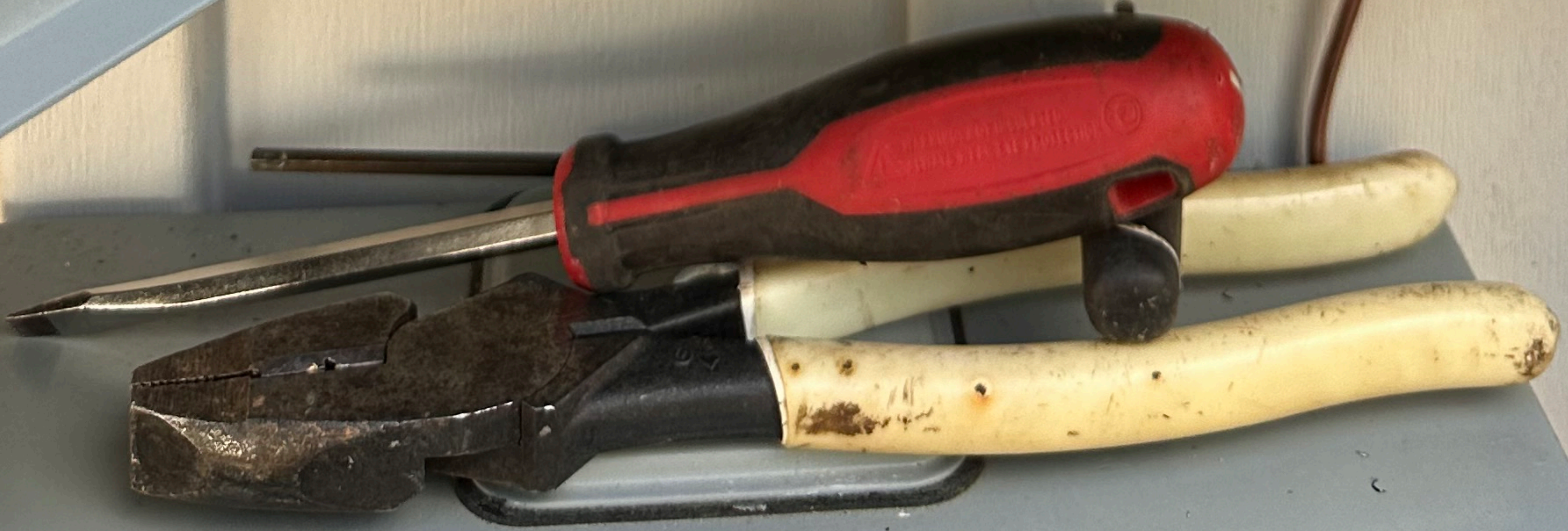
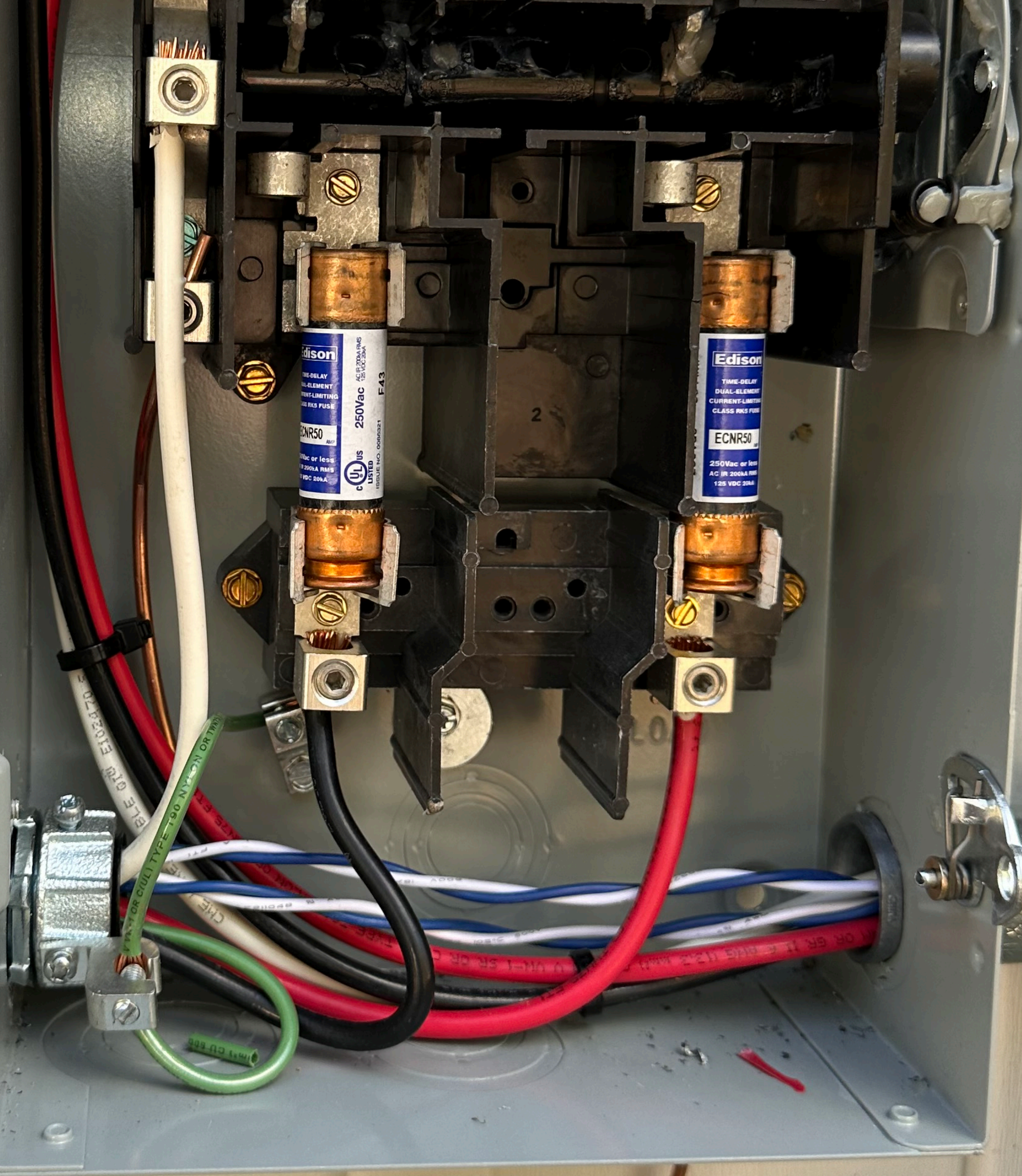
NOM-367-ANCA

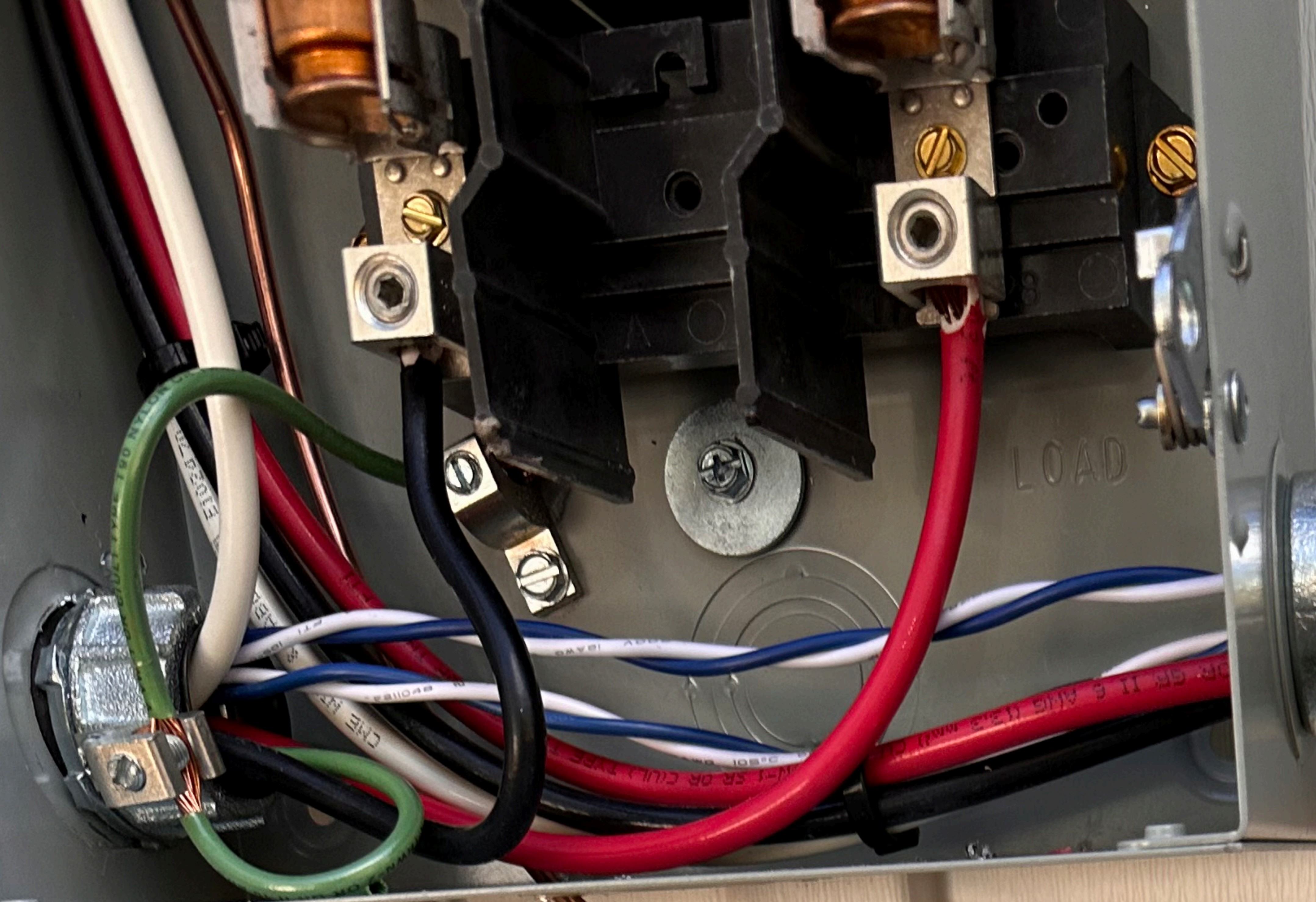


600 para sistemas con falla a tierra en fase B.
 Adecuado para usarse como equipo de acometida.
 Tamaño máximo de fusible de 60 amperios.
 La corriente de arranque de motores con capacidad mayor a los cables
 de potencia estándar puede requerir el uso de fusibles con
 características de retardo de tiempo apropiadas.
 La corriente de carga continua no debe exceder el 80% de la capacidad
 del fusible empleado, con excepción de los circuitos de motores.
 Adecuado para usarse en circuitos capaces de entregar no más de 100
 000 A RCM simétricos, con 240 V — máximo, cuando se utilizan fusibles
 clase R. El juego adaptador de fusibles DS18FK se requiere para
 fusibles clase R.
 PELIGRO — a menos que se utilicen fusibles clase R, este interruptor
 puede presentar riesgos de incendio y daño personal si se instala en
 circuitos con capacidad de entregar más de 10 000 A RCM simétricos.
 Cuando se utilizan fusibles clase R o H, se requiere para usarse en
 circuitos con capacidad de entregar no más de 10 000 A RCM simétricos,
 con 240 V — máximo.
 La experiencia muestra que los fusibles renovables pueden causar
 problemas de sobrecalentamiento, por lo tanto, el uso de fusibles
 renovables no es recomendable.
 Usar conductores para 60°C a 75°C.
 Par de apriete de terminales / Tornillo de cabeza hexagonal / 3.97 mm /
 11.3 N.m
 Rango de la sección transversal del conductor
 14 — 170 AWG, 2.1 a 63.6 mm² AL — CU

Seulement pour des systèmes de phase B MALT.
 Apprêté comme équipement d'entrée de service.
 Apprêté comme équipement d'entrée de service.
 Le calibre maximum du fusible BDA.
 Le calibre maximum de démarrage des moteurs plus élevée que pour les
 L'intensité de démarrage peut exiger l'utilisation de fusibles ayant des
 "horsepower" standards peut exiger l'utilisation de fusibles ayant des
 caractéristiques de retardement appropriées.
 Toute charge continue ne devra pas excéder 80% du calibre des fusibles.
 utilisés seul s'il s'agit de circuits de moteurs.
 Convient à un circuit de 100 000 ampères symétriques ou plus,
 240 V — maximum, lorsque des fusibles de classe R, cet interrupteur
 Ensemble de fusible DS18FK requis pour fusibles R.
 DANGER — A moins d'utiliser des fusibles de classe R, cet interrupteur
 peut présenter des risques d'incendie et de blessures corporelles s'il est
 installé dans un circuit de plus de 10 000 ampères symétriques.
 Si utilisé avec des fusibles K ou H, l'interrupteur sera approprié pour
 utilisation sur un circuit ne délivrant pas plus de 10 000 ampères RMS
 symétriques, 240 V maximum.
 L'expérience démontre que l'utilisation de fusibles renouvelables peut
 causer des problèmes de surchauffe et, par conséquent, ces fusibles ne
 sont pas recommandés.
 Utiliser conducteurs 60°C ou 75°C.
 Utiliser aux bornes / Vis à tête six pans / 5/32" / 100 Lb. — Po.
 Plage de conducteurs
 14 — 170 AWG, 2.1 a 63.6 mm² AL — CU

LINE SHIELD
BOUCLIER PROTECTEUR
CUBIERTA DE LÍNEA
REINSTALL AFTER WIRING
REINSTALLER APRES L'INSTALLATION ELECTRIQUE
REINSTALL DESPUES DE CABLEADO





⚠ WARNING
 THIS SERVICE METER
 IS ALSO SERVED BY A
 PHOTOVOLTAIC SYSTEM



CL200 240V 3W TYPE C2M 30TA 1.0Kh
 ZZL 9E4097 H67
 DUKE ENERGY PROGRESS
 338 443 926

F120529
 OpenWay
 4/21





NO

WARNING: This equipment contains live electrical parts which may be energized even when the main power switch is turned off. Do not touch any internal parts. For more information, see the instructions.

GREEN TAG: 120V 60Hz 15A

CONDUIT INFORMATION: 1/2" DIA. 15' LONG

TERMINAL BLOCK

CAUTION



IQ Gateway Summary



Connected to ENVOY_025952. Don't move your device away from IQ Gateway.

IQ Gateway Communications Gateway Report

27 Jan 2023, 02:10 PM

System

Name	Installer Reference	Owner
Allen Kent	LIS11153	arkent81@icloud.com

Street 1	Street 2
190 Kent Lane	NA

City	State
Coats	NC

Zip/Postal Code	Country
27521	United States

IQ Gateway

Serial number	Software version	Type
202225025952	D7.3.120 (ac5b3c)	IQ Gateway Metered

Production Meter	Consumption Meter	Rate structure
Lifetime: 431.70 Wh Status: Normal	Lifetime: 77.77 Wh (Exporting) Status: Normal	NA

Connection to Enphase Cloud	Last report to Enphase Cloud	Grid Profile
Wi-Fi	27 Jan 2023, 02:05 PM	Grid Profile : IEEE 1547:2015-WHB:1.2.17

30 IQ Microinverters, 1 IQ System Controller, 2 IQ Load Controllers

30 IQ Microinverters IQ8PLUS

Serial number	Last report	Power	Grid Profile
482237099196	27 Jan 2023, 02:09 PM	24 W	Set
482237099836	27 Jan 2023, 02:09 PM	23 W	Set
482237100232	27 Jan 2023, 02:09 PM	22 W	Set
482237104075	27 Jan 2023, 02:09 PM	25 W	Set
482237104184	27 Jan 2023, 02:09 PM	25 W	Set
482237099940	27 Jan 2023, 02:09 PM	25 W	Set
482237104092	27 Jan 2023, 02:10 PM	25 W	Set
482237103821	27 Jan 2023, 02:06 PM	22 W	Set
482236107218	27 Jan 2023, 02:06 PM	25 W	Set

CONTINUE



Systems



Dashboard



Support



Menu



IQ Gateway Summary



Connected to ENVOY_025952. Don't move your device away from IQ Gateway.

Connection to Enphase Cloud	Last report to Enphase Cloud	Grid Profile
Wi-Fi	27 Jan 2023, 02:05 PM	Grid Profile : IEEE 1547:2015-WHB:1.2.17

30 IQ Microinverters, 1 IQ System Controller, 2 IQ Load Controllers

30 IQ Microinverters IQ8PLUS

Serial number	Last report	Power	Grid Profile
482237099196	27 Jan 2023, 02:09 PM	24 W	Set
482237099836	27 Jan 2023, 02:09 PM	23 W	Set
482237100232	27 Jan 2023, 02:09 PM	22 W	Set
482237104075	27 Jan 2023, 02:09 PM	25 W	Set
482237104184	27 Jan 2023, 02:09 PM	25 W	Set
482237099940	27 Jan 2023, 02:09 PM	25 W	Set
482237104092	27 Jan 2023, 02:10 PM	25 W	Set
482237103821	27 Jan 2023, 02:06 PM	22 W	Set
482236107218	27 Jan 2023, 02:06 PM	25 W	Set
482237098877	27 Jan 2023, 02:06 PM	25 W	Set
482237099754	27 Jan 2023, 02:06 PM	149 W	Set
482237099170	27 Jan 2023, 02:06 PM	279 W	Set
482237104079	27 Jan 2023, 02:06 PM	288 W	Set
482236102659	27 Jan 2023, 02:06 PM	288 W	Set
482236102672	27 Jan 2023, 02:06 PM	286 W	Set
482236102504	27 Jan 2023, 02:06 PM	193 W	Set
482237099915	27 Jan 2023, 02:01 PM	293 W	Set
482236103166	27 Jan 2023, 02:01 PM	286 W	Set
482236102647	27 Jan 2023, 02:01 PM	288 W	Set
482236102723	27 Jan 2023, 02:01 PM	288 W	Set
482236103188	27 Jan 2023, 02:01 PM	288 W	Set
482236107364	27 Jan 2023, 02:01 PM	238 W	Set
482236102369	27 Jan 2023, 02:04 PM	24 W	Set
482236103162	27 Jan 2023, 02:04 PM	27 W	Set
482236103184	27 Jan 2023, 02:04 PM	24 W	Set
482236102172	27 Jan 2023, 02:05 PM	24 W	Set
482236102688	27 Jan 2023, 02:05 PM	28 W	Set
482237099937	27 Jan 2023, 02:05 PM	24 W	Set
482236103176	27 Jan 2023, 02:05 PM	24 W	Set
482237103815	27 Jan 2023, 02:05 PM	24 W	Set

1 IQ System Controller

Serial number	State	Grid Status	ESUB
---------------	-------	-------------	------

CONTINUE



Systems



Dashboard



Support



Menu



IQ Gateway Summary



Connected to ENVOY_025952. Don't move your device away from IQ Gateway.

482237100232	27 Jan 2023, 02:09 PM	22 W	Set
482237104075	27 Jan 2023, 02:09 PM	25 W	Set
482237104184	27 Jan 2023, 02:09 PM	25 W	Set
482237099940	27 Jan 2023, 02:09 PM	25 W	Set
482237104092	27 Jan 2023, 02:10 PM	25 W	Set
482237103821	27 Jan 2023, 02:06 PM	22 W	Set
482236107218	27 Jan 2023, 02:06 PM	25 W	Set
482237098877	27 Jan 2023, 02:06 PM	25 W	Set
482237099754	27 Jan 2023, 02:06 PM	149 W	Set
482237099170	27 Jan 2023, 02:06 PM	279 W	Set
482237104079	27 Jan 2023, 02:06 PM	288 W	Set
482236102659	27 Jan 2023, 02:06 PM	288 W	Set
482236102672	27 Jan 2023, 02:06 PM	286 W	Set
482236102504	27 Jan 2023, 02:06 PM	193 W	Set
482237099915	27 Jan 2023, 02:01 PM	293 W	Set
482236103166	27 Jan 2023, 02:01 PM	286 W	Set
482236102647	27 Jan 2023, 02:01 PM	288 W	Set
482236102723	27 Jan 2023, 02:01 PM	288 W	Set
482236103188	27 Jan 2023, 02:01 PM	288 W	Set
482236107364	27 Jan 2023, 02:01 PM	238 W	Set
482236102369	27 Jan 2023, 02:04 PM	24 W	Set
482236103162	27 Jan 2023, 02:04 PM	27 W	Set
482236103184	27 Jan 2023, 02:04 PM	24 W	Set
482236102172	27 Jan 2023, 02:05 PM	24 W	Set
482236102688	27 Jan 2023, 02:05 PM	28 W	Set
482237099937	27 Jan 2023, 02:05 PM	24 W	Set
482236103176	27 Jan 2023, 02:05 PM	24 W	Set
482237103815	27 Jan 2023, 02:05 PM	24 W	Set

1 IQ System Controller

Serial number	State	Grid Status	ESUB
122219032485	Unknown	Connected	Active

2 IQ Load Controllers

Serial number	Status	Created on
202152082806	Normal	2023-01-27, 12:23 PM
202216041229	Normal	2023-01-27, 12:24 PM

Generated by Installer Toolkit
 © 2008-2023 Enphase Energy Inc. All rights reserved.

CONTINUE

← Live Status

Connected to ENVOY_025952. Don't move your device away from IQ Gateway.



Grid Connectivity

System is On-Grid



7772 w

Producing



2186 w

Exporting



5586 w

Consuming

