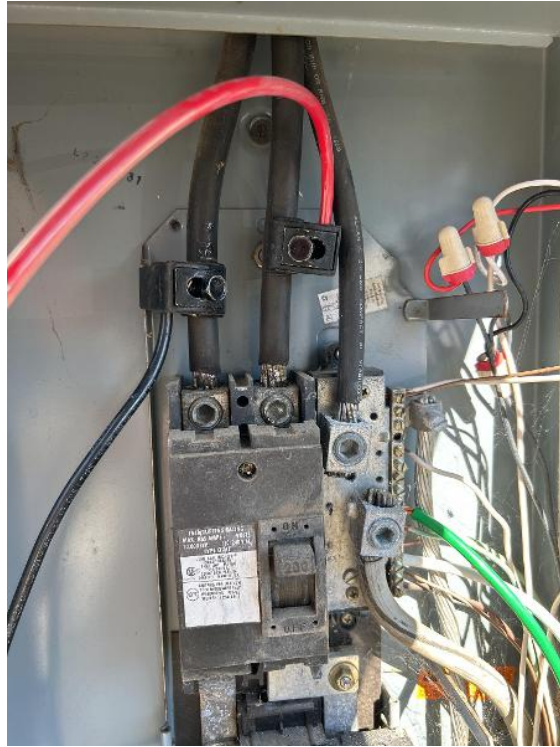


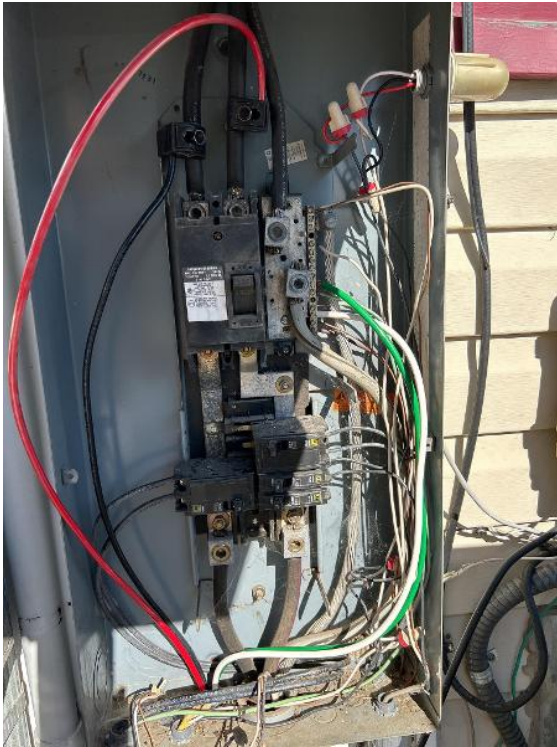
Customer Information / Informacion Del Cliente / Front of Home & Street Numbers Close Up



Electrical / Electrico / Interconnection (tie-in closeup, solar breaker rating, msp bus rating)



Electrical / Electrico / Interconnection (tie-in closeup, solar breaker rating, msp bus rating)



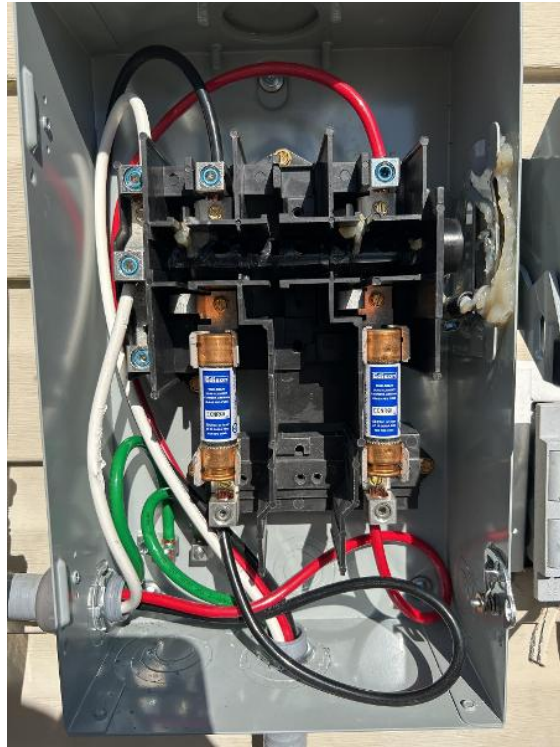
Electrical / Electrico / Interconnection (tie-in closeup, solar breaker rating, msp bus rating)



Electrical / Electrico / Interconnection Wiring Overview (pullback of meter /panel covers off)



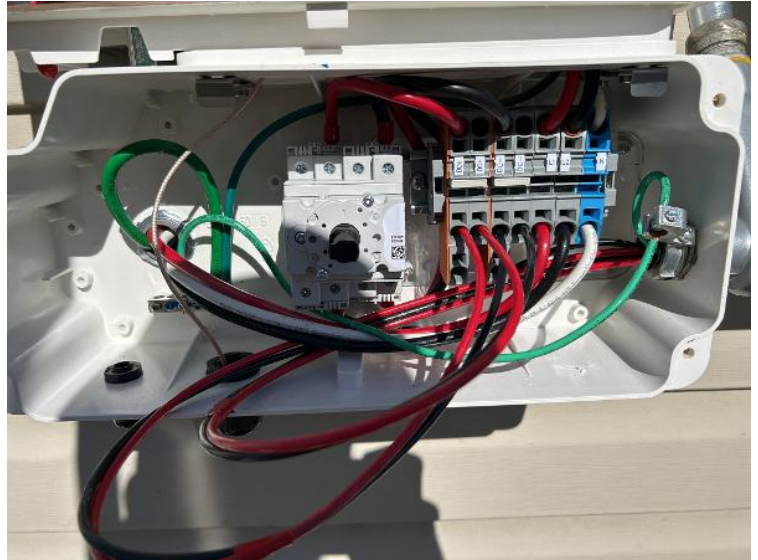
Electrical / Electrico / AC Disconnect Wiring (close up of fuse rating when needed)



Electrical / Electrico / AC Disconnect Wiring (close up of fuse rating when needed)



Electrical / Electrico / DC Disconnect Wiring (lower section of the inverter)



Electrical / Electrico / Inverter with Cell Kit (upper section of inverter without cover)



Electrical / Electrico / Inverter with Cell Kit (upper section of inverter without cover)



Electrical / Electrico / BOS Conduit Run (show point of entry with sealant closeup inside and out of conduit body, and drainage weep holes)



Electrical / Electrico / Attic Conduit Run



Electrical / Electrico / Visible Grounding to Electrode Show All (ground rods, water main, Ufer, other)



Electrical / Electrico / Visible Grounding to Electrode Show All (ground rods, water main, Ufer, other)



Electrical / Electrico / Visible Grounding to Electrode Show All (ground rods, water main, Ufer, other)



Electrical / Electrico / Visible Grounding to Electrode Show All (ground rods, water main, Ufer, other)



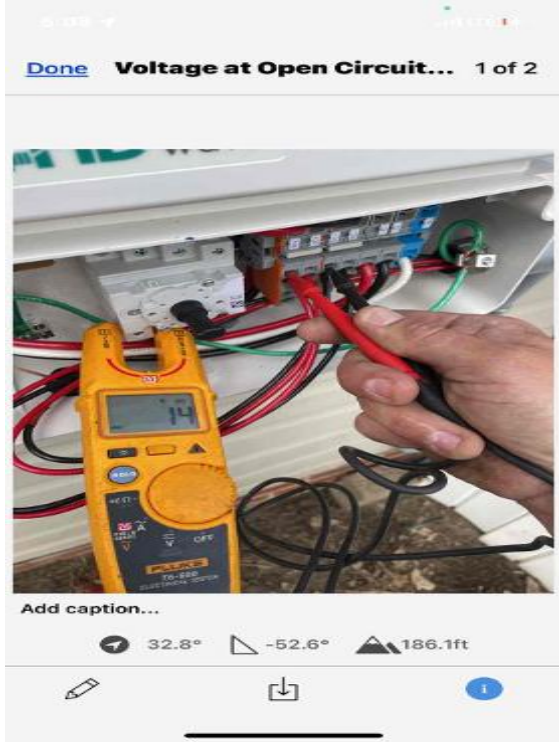
Electrical / Electrico / Voltage at Open Circuit (DCv of each string, not connected to inverter)



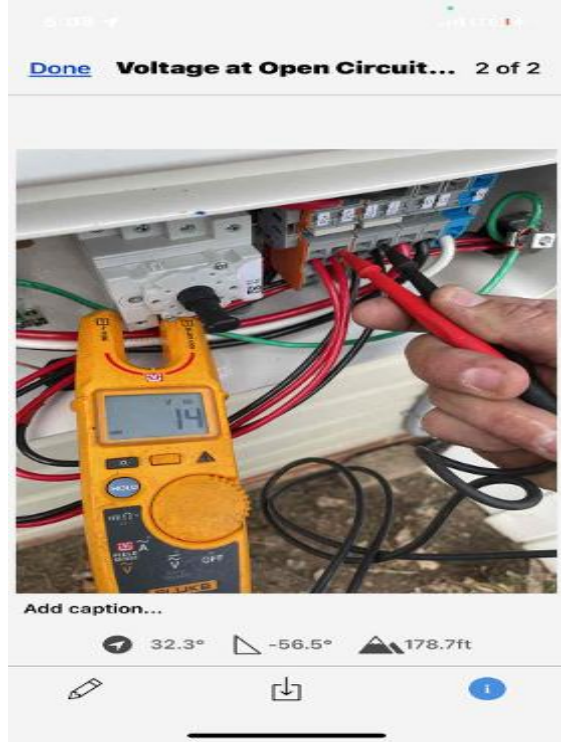
Electrical / Electrico / Voltage at Open Circuit (DCv of each string, not connected to inverter)



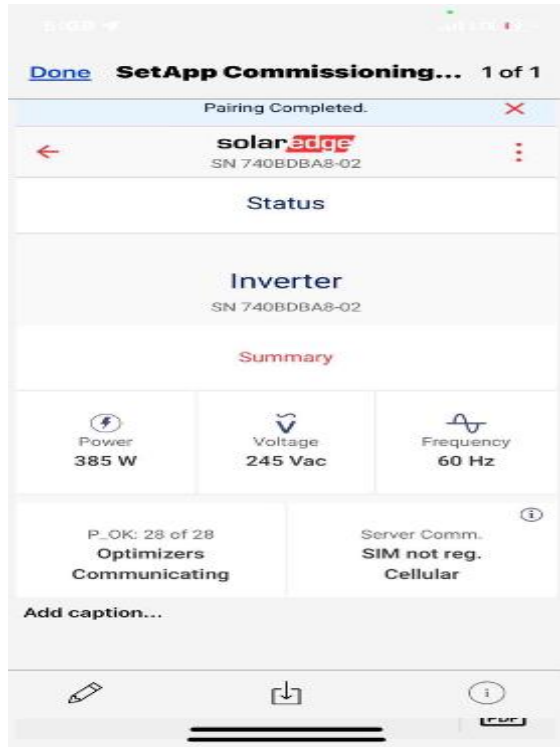
Electrical / Electrico / Voltage at Open Circuit (DCv of each string, not connected to inverter)



Electrical / Electrico / Voltage at Open Circuit (DCv of each string, not connected to inverter)



Electrical / Electrico / Voltage at Open Circuit (DCv of each string, not connected to inverter)



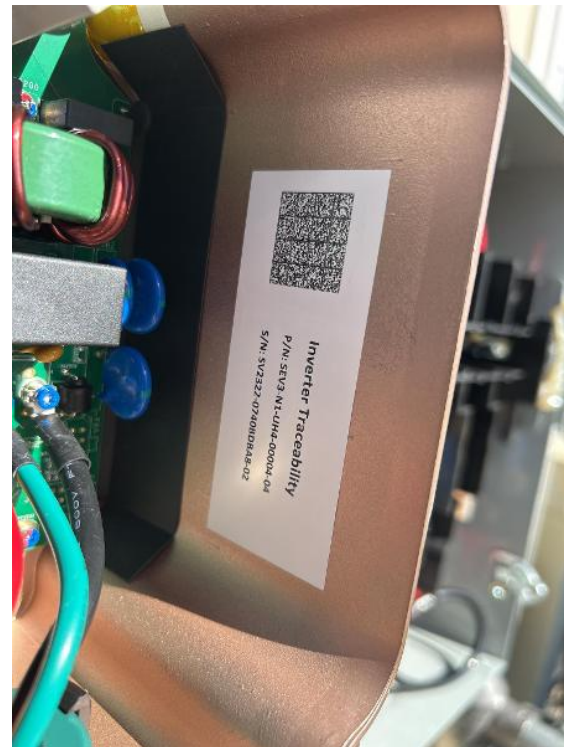
Electrical / Electrico / Inverter Serial Labels (full side label, serial QR code, & RGM)



Electrical / Electrico / Inverter Serial Labels (full side label, serial QR code, & RGM)



Electrical / Electrico / Inverter Serial Labels (full side label, serial QR code, & RGM)



Electrical / Electrico / RGM Serial Label (inside inverter if included)



Electrical / Electrico / BOS Stickers for Each Box (covers on)



Electrical / Electrico / BOS Stickers for Each Box (covers on)



Electrical / Electrico / BOS Stickers for Each Box (covers on)



Electrical / Electrico / BOS Stickers for Each Box (covers on)



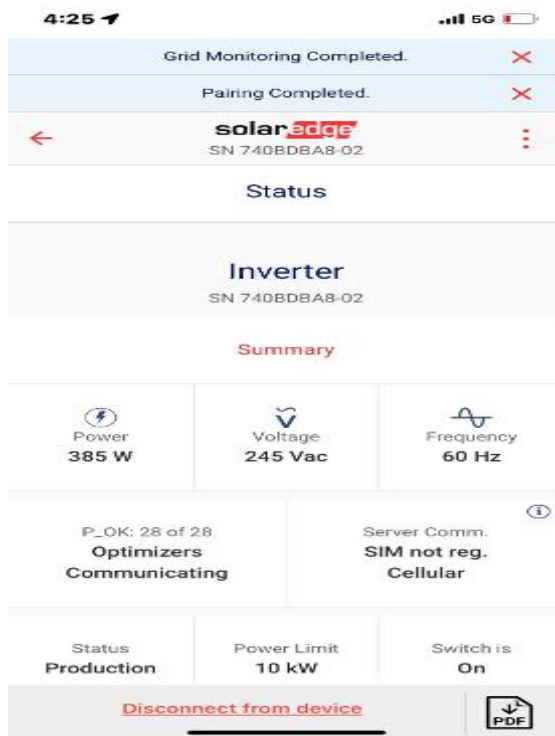
Electrical / Electrico / Utility Service Meter with Warning Label (including utility meter number closeup)



Electrical / Electrico / Electrical Equipment Overview (pullback of all boxes, discos, meters, inverter)



Electrical / Electrico / SetApp Commissioning (P_OK/S_OK/Meter Serials)



Roof / Techo / Horizon



Roof / Techo / Potential Shading



Roof / Techo / Potential Shading



Roof / Techo / Attachment Sealant



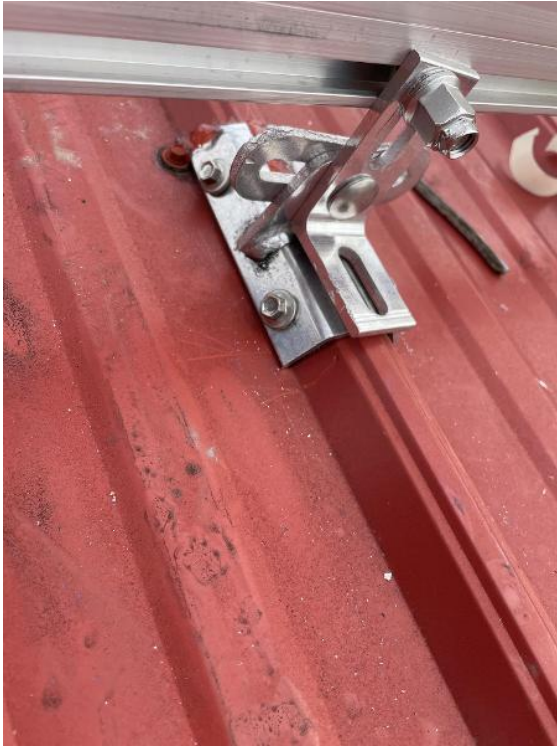
Roof / Techo / Attachment Sealant



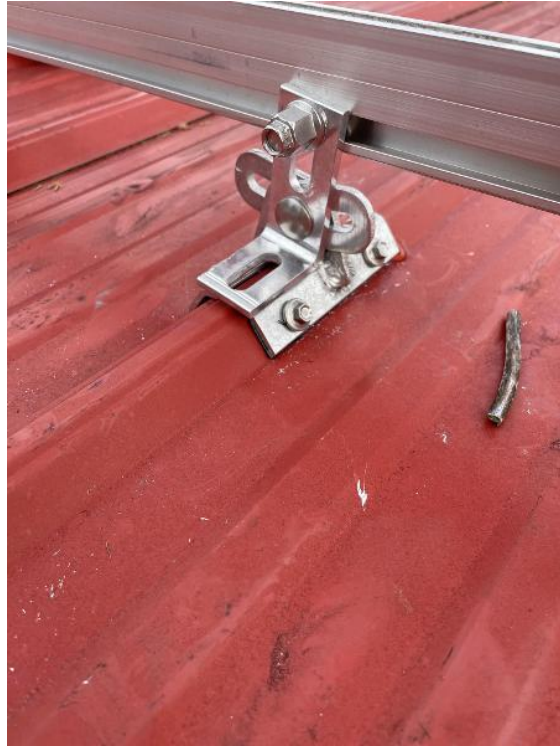
Roof / Techo / Roof Attachment (closeup and overview)



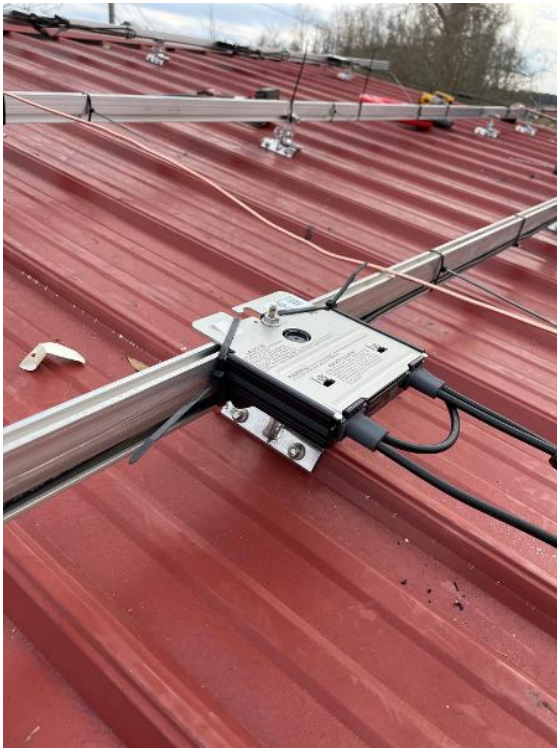
Roof / Techo / Roof Attachment (closeup and overview)



Roof / Techo / Roof Attachment (closeup and overview)



Roof / Techo / Optimizer/Microinverter Mounted



Roof / Techo / Optimizer/Microinverter Mounted



Roof / Techo / Optimizer/Microinverter Mounted



Roof / Techo / Racking and Wire Management (all arrays modules off)



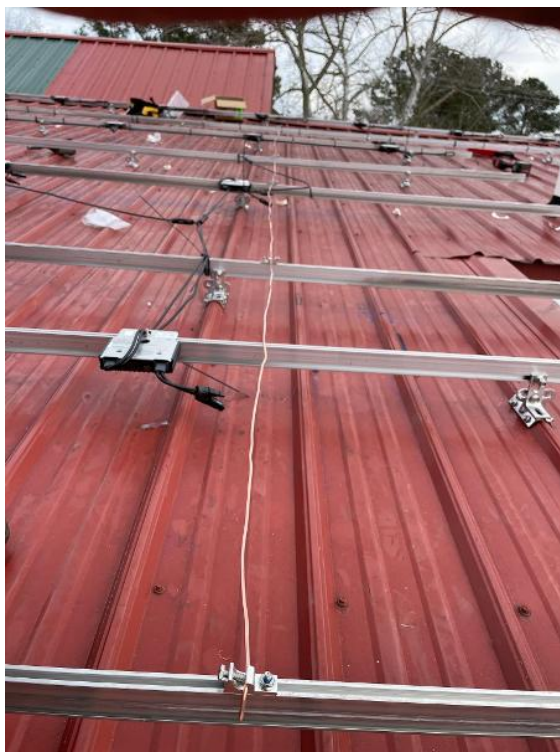
Roof / Techo / Racking and Wire Management (all arrays modules off)



Roof / Techo / Racking and Wire Management (all arrays modules off)



Roof / Techo / EGC Path (roof only)



Roof / Techo / EGC Path (roof only)



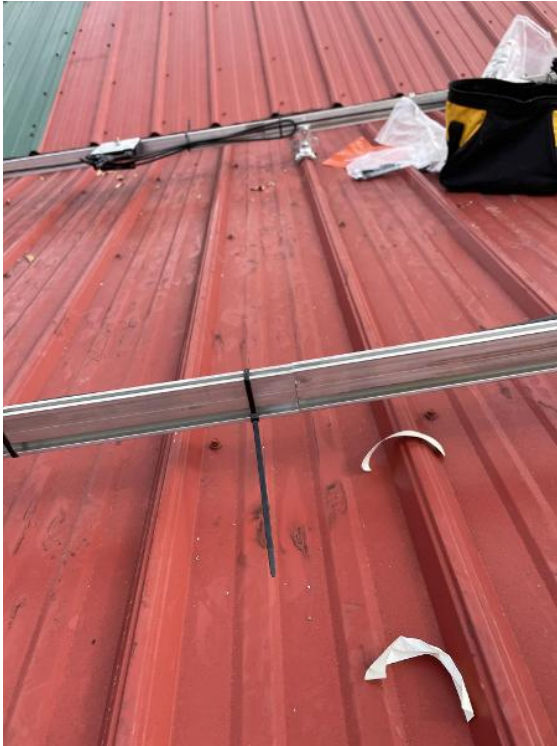
Roof / Techo / EGC Path (roof only)



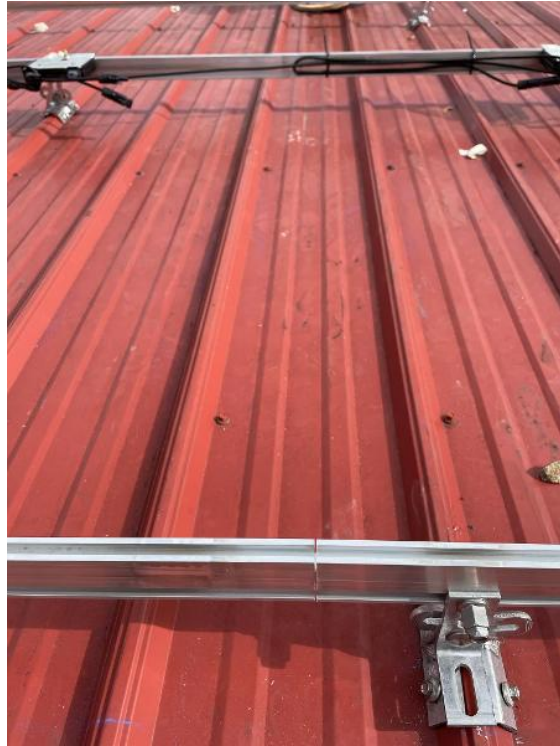
Roof / Techo / Rail Splices



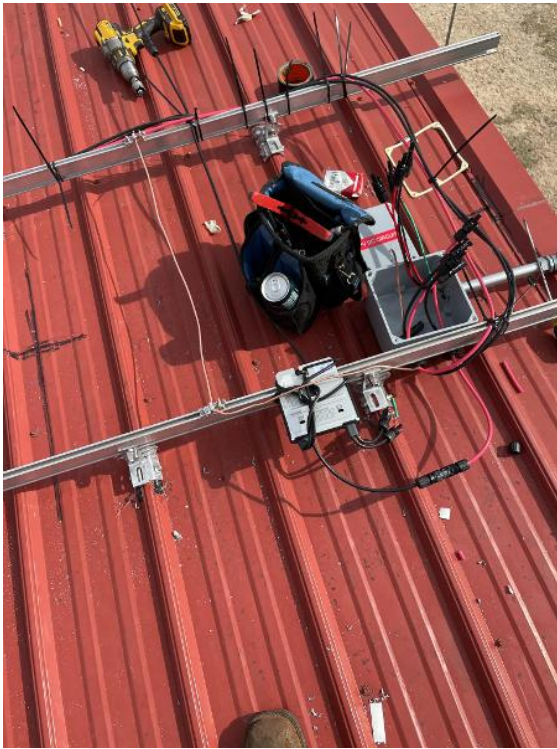
Roof / Techo / Rail Splices



Roof / Techo / Rail Splices



Roof / Techo / Grounding From Rail to Soladeck/JBox



Roof / Techo / SolaDeck/Junction Box (each array cover on/off)



Roof / Techo / SolaDeck/Junction Box (each array cover on/off)



Roof / Techo / Optimizer/Microinverter Map (arranged in array layout)



Roof / Techo / String Diagram



Roof / Techo / Module Label



Roof / Techo / Module Clamps (Mids and Ends)



Roof / Techo / Module Clamps (Mids and Ends)



Roof / Techo / Module Clamps (Mids and Ends)



Roof / Techo / Module Clamps (Mids and Ends)



Roof / Techo / Module Clamps (Mids and Ends)



Roof / Techo / Under Array Wire Management (each array)



Roof / Techo / On-Array Tilt and Height (for each array)



Roof / Techo / On-Array Tilt and Height (for each array)



Roof / Techo / On-Array Tilt and Height (for each array)



Roof / Techo / Complete Array (every module shown)



Roof / Techo / Complete Array (every module shown)



Roof / Techo / Safety Anchor Penetrations (flashed and sealed)



Roof / Techo / Complete Roof Conduit and Supports, with Flashing and Sealant



Roof / Techo / Rooftop Conduit Penetration (showing sealant under flashing and around conduit)



Crew & Safety / Instaladores y Seguridad / Completed Site Safety Plan



Crew & Safety / Instaladores y Seguridad / Install Vehicles w/ Safety Cones



Crew & Safety / Instaladores y Seguridad / Install Vehicles w/ Safety Cones



Crew & Safety / Instaladores y Seguridad / Caution Tape for Controlled Access Zones



Crew & Safety / Instaladores y Seguridad / Proper Ladder Setup



Crew & Safety / Instaladores y Seguridad / Crews Wearing Fall Protection/PPE



Crew & Safety / Instaladores y Seguridad / Crews Wearing Fall Protection/PPE

