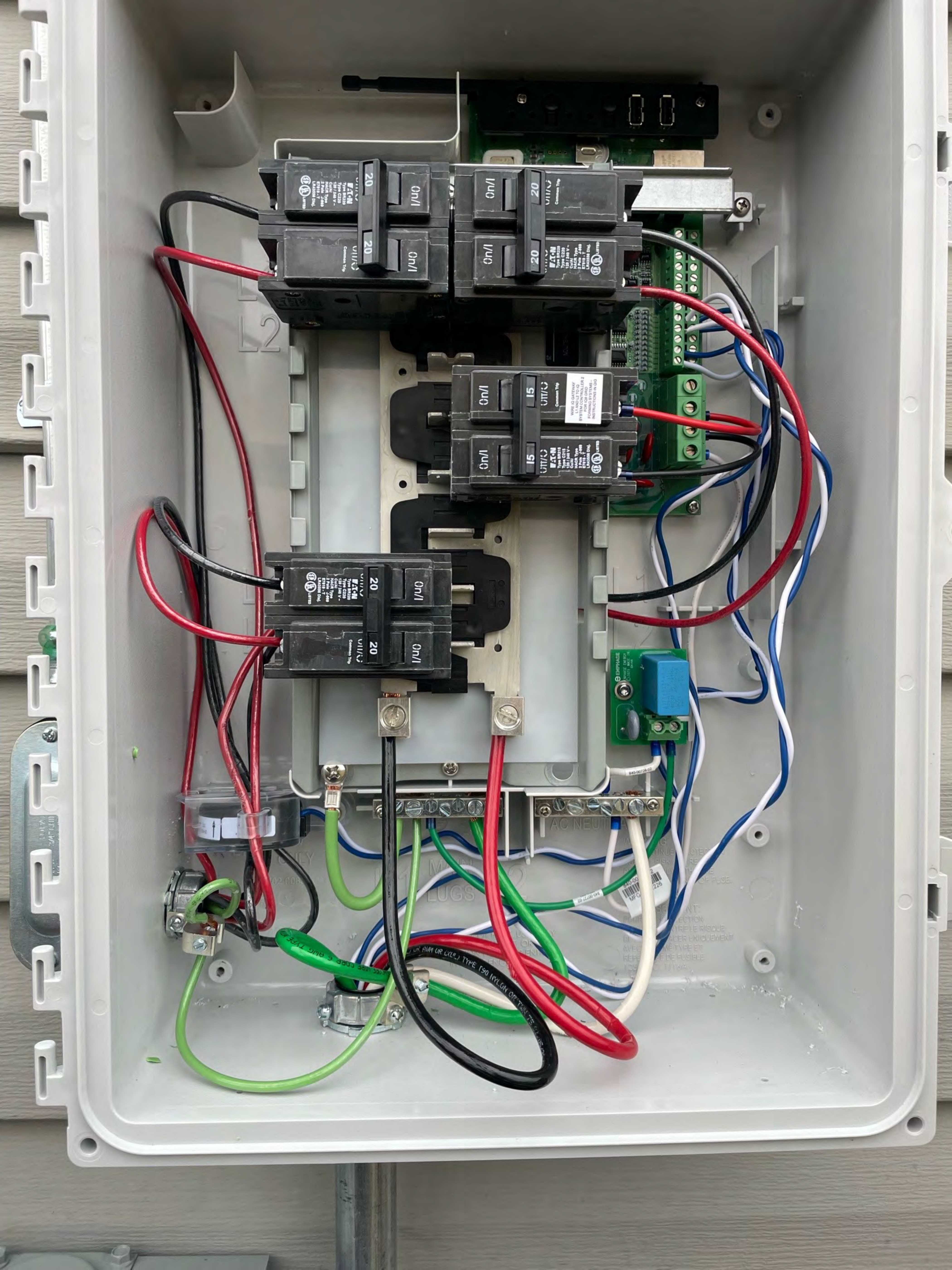




125 Letcher Ln.

WARNING!















393

600 V

15 15 15 15

15 15 15 15

15 15 15 15

20 20 20 20

20 20 20 20

SIEMENS
TYPE QP1H
CIRCUIT BREAKER
181-4 POLE UNIT
ISSUE NO. DP-1/07
120/240V ~ 50/60Hz HACR Type 40°C
Interrupting Rating 22,000 Amperes RMS
Symmetrical 120/240V ~
75°C Wire Only, Torque 250 B-In
Wire Range - 1-300kcmil CU-AL
USE ONLY IN LISTED ENCLOSURES
SIEMENS ENERGY & AUTOMATION INC.
ALPHARETTA, GA USA
ASSEMBLED IN MEXICO

200A
& 091007

40 40 30 30
60 60 30 30

SIEMENS
TYPE QP1H
CIRCUIT BREAKER
181-4 POLE UNIT
ISSUE NO. DP-1/07
120/240V ~ 50/60Hz HACR Type 40°C
Interrupting Rating 22,000 Amperes RMS
Symmetrical 120/240V ~
75°C Wire Only, Torque 250 B-In
Wire Range - 1-300kcmil CU-AL
USE ONLY IN LISTED ENCLOSURES
SIEMENS ENERGY & AUTOMATION INC.
ALPHARETTA, GA USA
ASSEMBLED IN MEXICO

ENCORE WIRE CORP 6 AWG TYPE MTW OR THHN OR THWN-2 GR2 SUN-RES VW-I 600V OLD OR ALN DR COLD TYPE T90 NYLON DR

Family Rm

NEAR KIT & RIG

Blue and white cables bundle

Red and black cables bundle

Green and yellow cables bundle

White cables bundle

Black cables bundle



WARNING
DUAL POWER SUPPLY
SOURCES: UTILITY GRID
AND PV SOLAR
ELECTRIC SYSTEM

PV SYSTEM kWh METER

PHOTOVOLTAIC
SOLAR BREAKER

WARNING
SOLAR ELE
CIRCUIT BR
IS BACK



CL200 240V 3W TYPE C2M 30TA 1.0Kh
ZZZ 0E5136 H67
DUKE ENERGY PROGRESS
332 267 459

OpenWay
1/20

Dish Wash
Bed 24B
Kitchen
Lights
Microwave
Hot Res

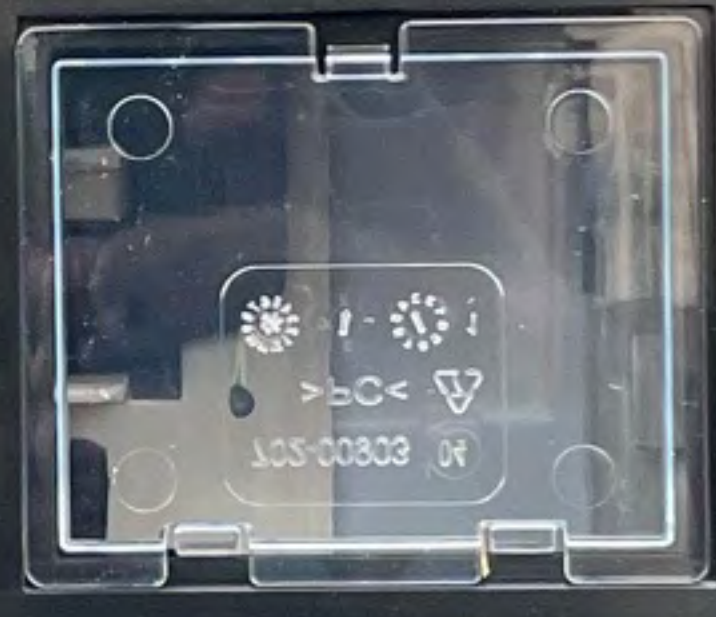
SERVICE
DISCONNECT

Range

um
TV | INTERNET | VOICE

WARNING
DE-ENERGIZE ALL CIRCUITS BEFORE INSTALLING THE CT LEAD WIRES (BELOW THIS DEADFRONT). SAFETY HAZARD AND RISK OF EQUIPMENT DAMAGE IF INSTALLED WHILE CIRCUITS ARE ENERGIZED

WARNING
WIRE IQ GATEWAY L1 AND L2 TO IQ SYSTEM CONTROLLER 2 FOR IQ8 GRID FORMING SYSTEMS - INSTRUCTIONS IN IQ8

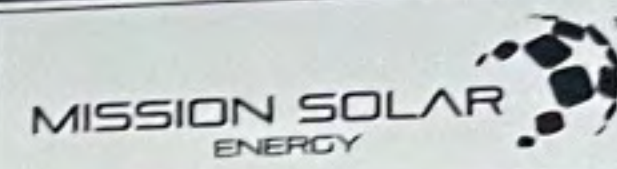


ENPHASE MOBILE CONNECT

WARNING:
RISK OF ELECTRIC SHOCK. DO NOT REMOVE COVER. NO USER SERVICEABLE PARTS INSIDE. REFER SERVICING TO QUALIFIED SERVICE PERSONNEL. WHEN THE PHOTOVOLTAIC ARRAY IS EXPOSED TO LIGHT IT SUPPLIES AN AC VOLTAGE TO THIS EQUIPMENT.

AVERTISSEMENT:
RISQUE DE CHOC ÉLECTRIQUE. NE PAS OUVRIR LE COUVER. POUR TOUTE RÉPARATION OU SERVICE D'ENTRETIEN, CONSULTER UN AGENT SPÉCIALISÉ. QUAND LES PANNEAUX PHOTOVOLTAÏQUE SONT EXPOSÉS À LA LUMIÈRE, IL FOURNIT UNE TENSION AC À CET APPAREIL.

WARNING: HIGH VOLTAGE
AVERTISSEMENT: HAUTE TENSION



Serial No **M220705-A1038**

Model Number	MSE386SX6R
Rated Maximum Power	[W] 386 (-0/+3%)
Open – Circuit Voltage	[V] 45.0
Voltage at Pmax	[V] 36.9
Short – Circuit Current	[A] 10.97
Current at Pmax	[A] 10.42
Max. System Voltage	[V] 1000
Max. Series overcurrent protective device (where required) fuse rating	[A] 20
Standard test condition	AM=1.5 E=1000W/m² Tc=25°C



For field connections, use Cu only, 12AWF (US, CANADA), 4mm2 (EU, Asia) wires insulated for a minimum of 90°C, rated for wet conditions and resistant to ultra violet radiation (where exposed). See installation manual for PV connector details and compatibility. Avertissement Risque de choc électrique. Ce module produit des tensions élevées dans la lumière du soleil. Risque électrique peut choquer, brûler ou de provoquer la mort. Ne pas toucher la borne.



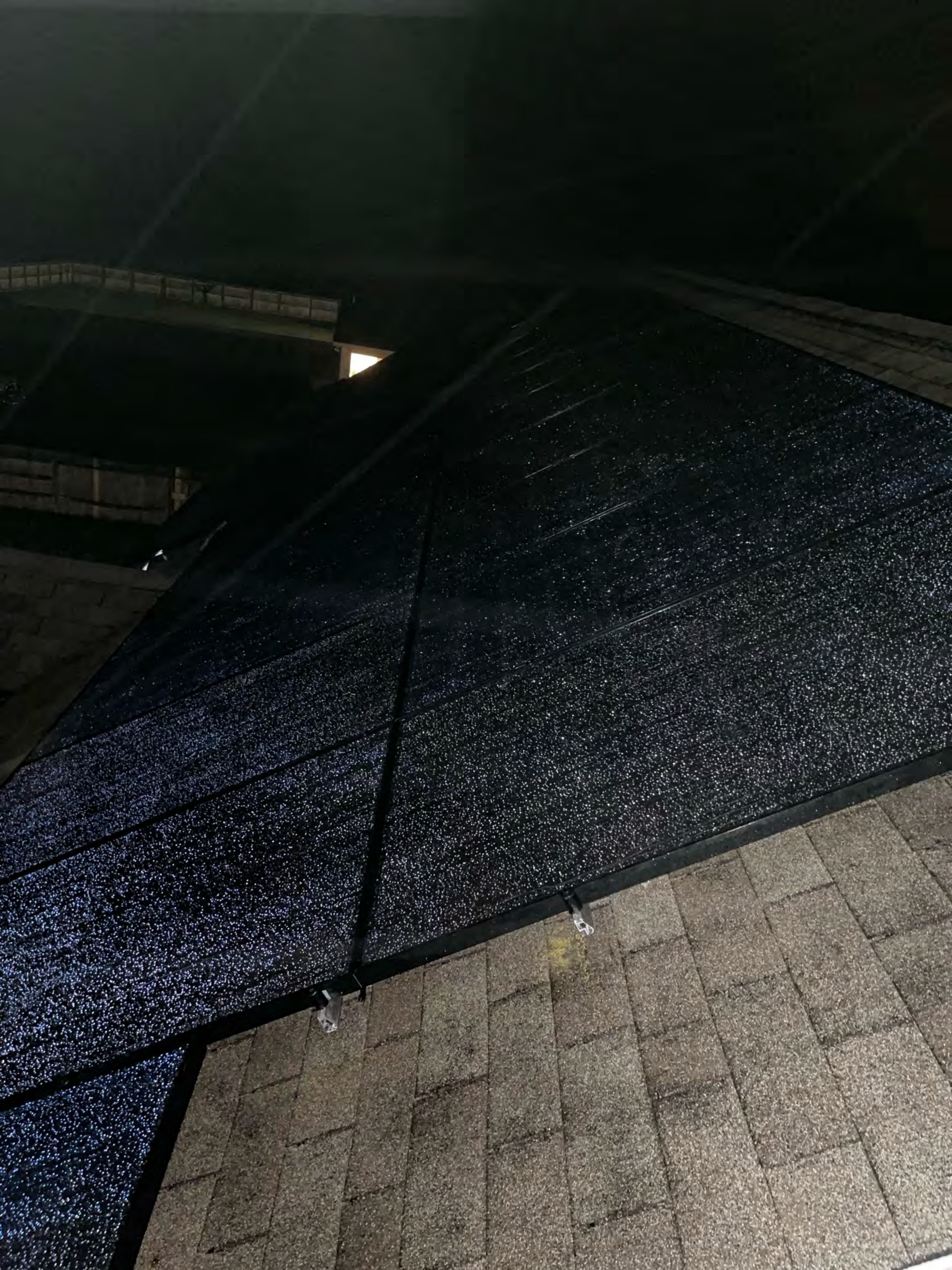
Fire Rating : Type 1
Class of Equipment: Class II
Design Load: Minimum 3600 Pa front and minimum 1600 Pa back load

Warning
PV modules generate voltage even with very weak light. Do not open the junction box. Les modules PV produisent tension même en basse lumière. Ne pas ouvrir la boîte de jonction.

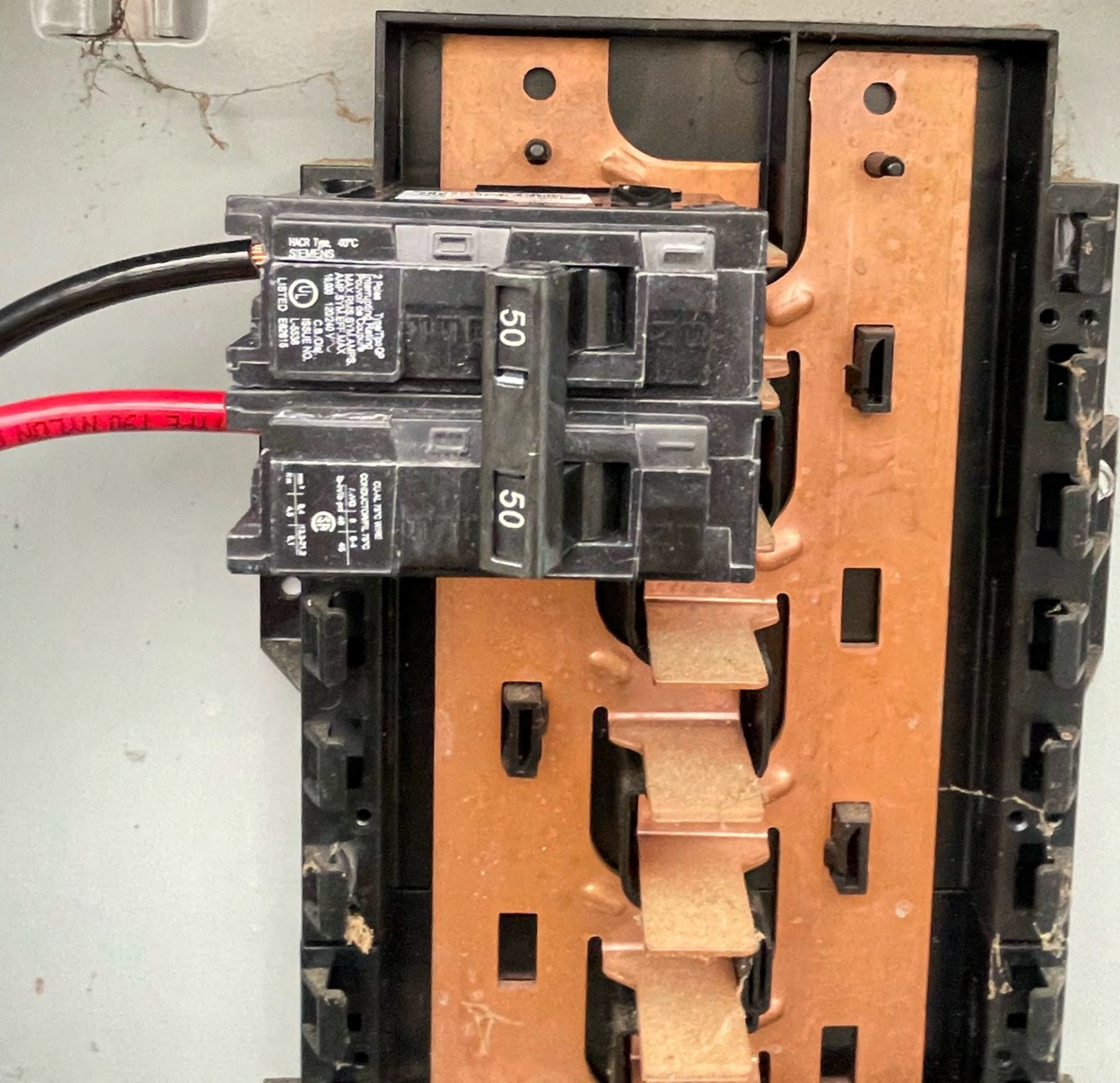


Address:
8303 S. New Braunfels Ave.
San Antonio, TX 78235
ASSEMBLED IN THE USA









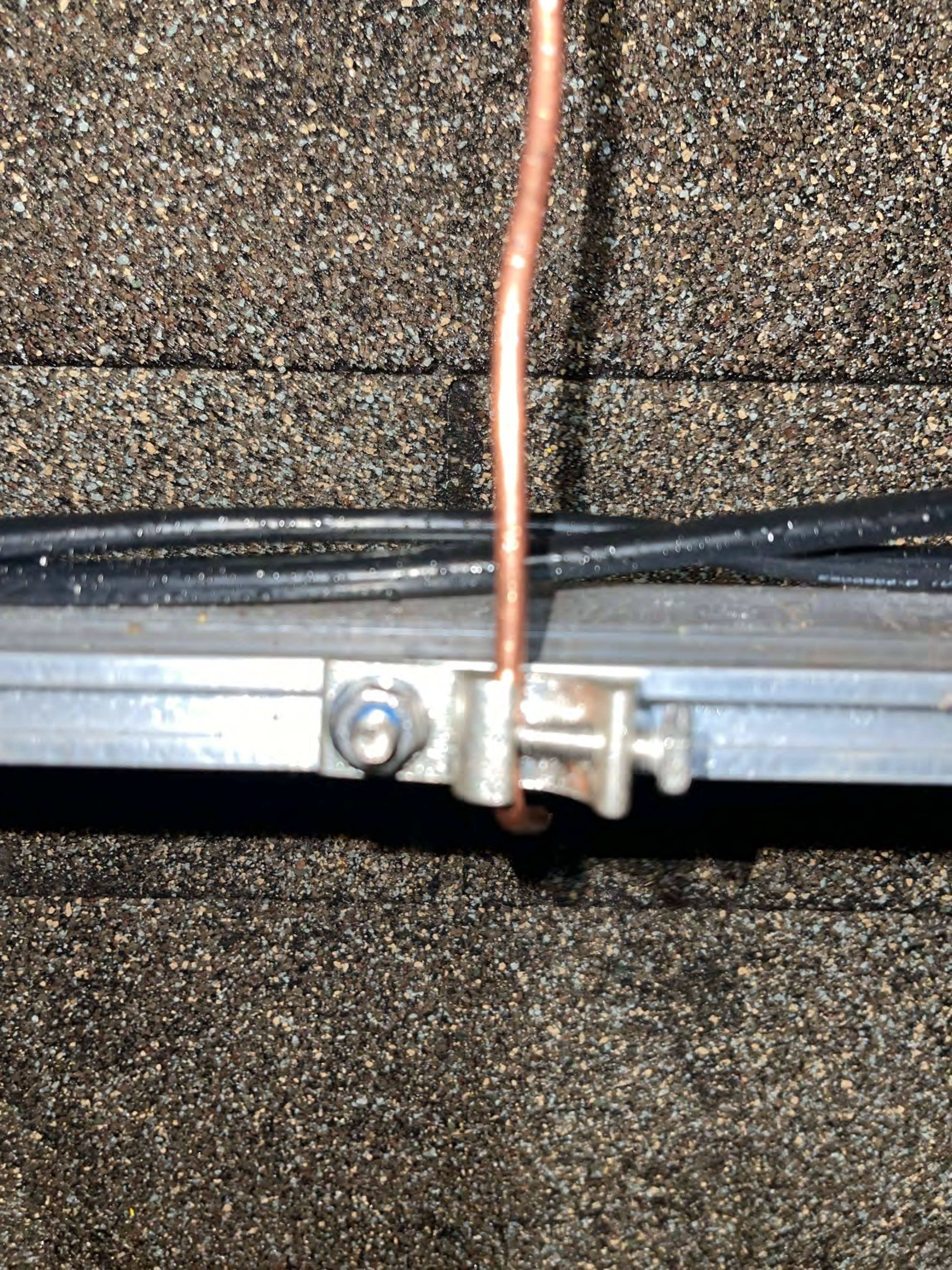
3 pole
Type THQP
Induction Heating
Rated as Cable
MAX. PERMITTED AMP.
AMP. STALEST 100%
UL
LISTED E68115
C.A.D. Inc.
Issue No.
L-5538

50

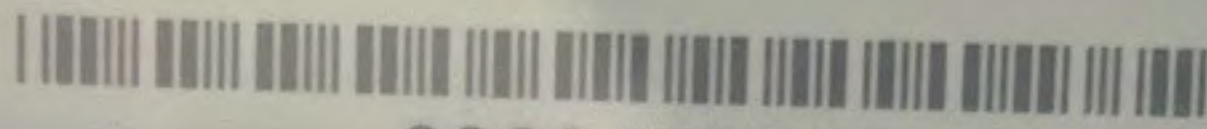
QUAL. PVC WIRE
CONDUCTORS, PVC
C.A.D. Inc.
Issue No.
L-5538

50





CENTRON®

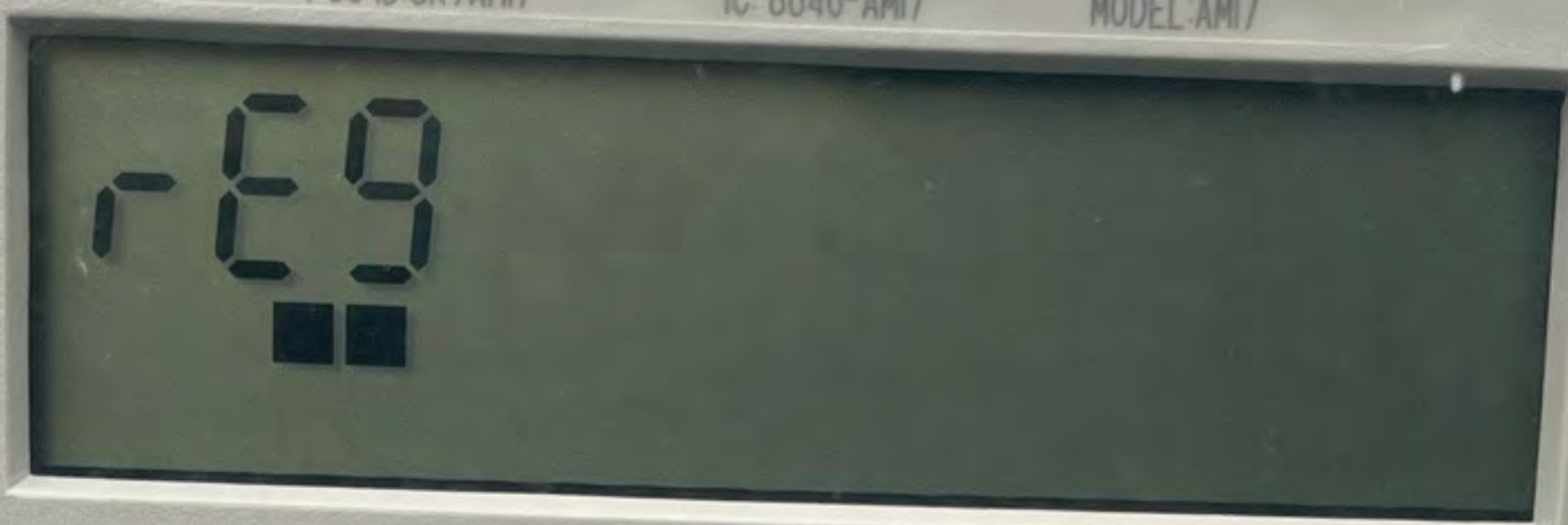


000242296C

FCC ID:SK9AM17

IC: 8646-AM17

MODEL-AM17



CL200 240V 3W TYPE C2M 30TA 1.0Kh

ZZZ 0E5136 H67



DUKE ENERGY PROGRESS

332 267 459

CA 0.5
FM2S
60Hz

F120529

OpenWay
by Itron

1/20

Combiner Box

X-IQ-AM1-240-4

Electrical ratings

Voltage 240VAC, 60Hz
 DG Breakers 80A MAX (combined)
 DG Inputs 64A MAX (combined)
 Output 65A MAX, 90A MAX feeder OCPD
 Temperature 46°C MAX ambient
 For DG breaker, use only Eaton BR series.


202241180876

P/N:

S/N:


202241180876


883-00356 20 770

Dedicated solar and DG Combiner Box - do not add loads
10 AMP or 15 AMP IQ Gateway Breaker not used for backfeed

Connection		Wire sizes	Torque
DG Breaker (1, 2, 3, 4)		14-10 AWG	2.2 Nm (20 lb-in)
		8 AWG	2.8 Nm (25 lb-in)
		6-4 AWG	3.0 Nm (27 lb-in)
60A Circuit Breaker only		4-1/0 AWG	5.0 Nm (45 lb-in)
IQ Gateway Breaker		14-10 AWG	2.26 Nm (20 lb-in)
Neutral and ground	Large screw	2-1/0 AWG 14-3 AWG	5.6 Nm (45 lb-in) 5.1 Nm (45 lb-in)
	Small screw	6 AWG 8 AWG	3.6 Nm (32 lb-in) 2.6 Nm (23 lb-in)

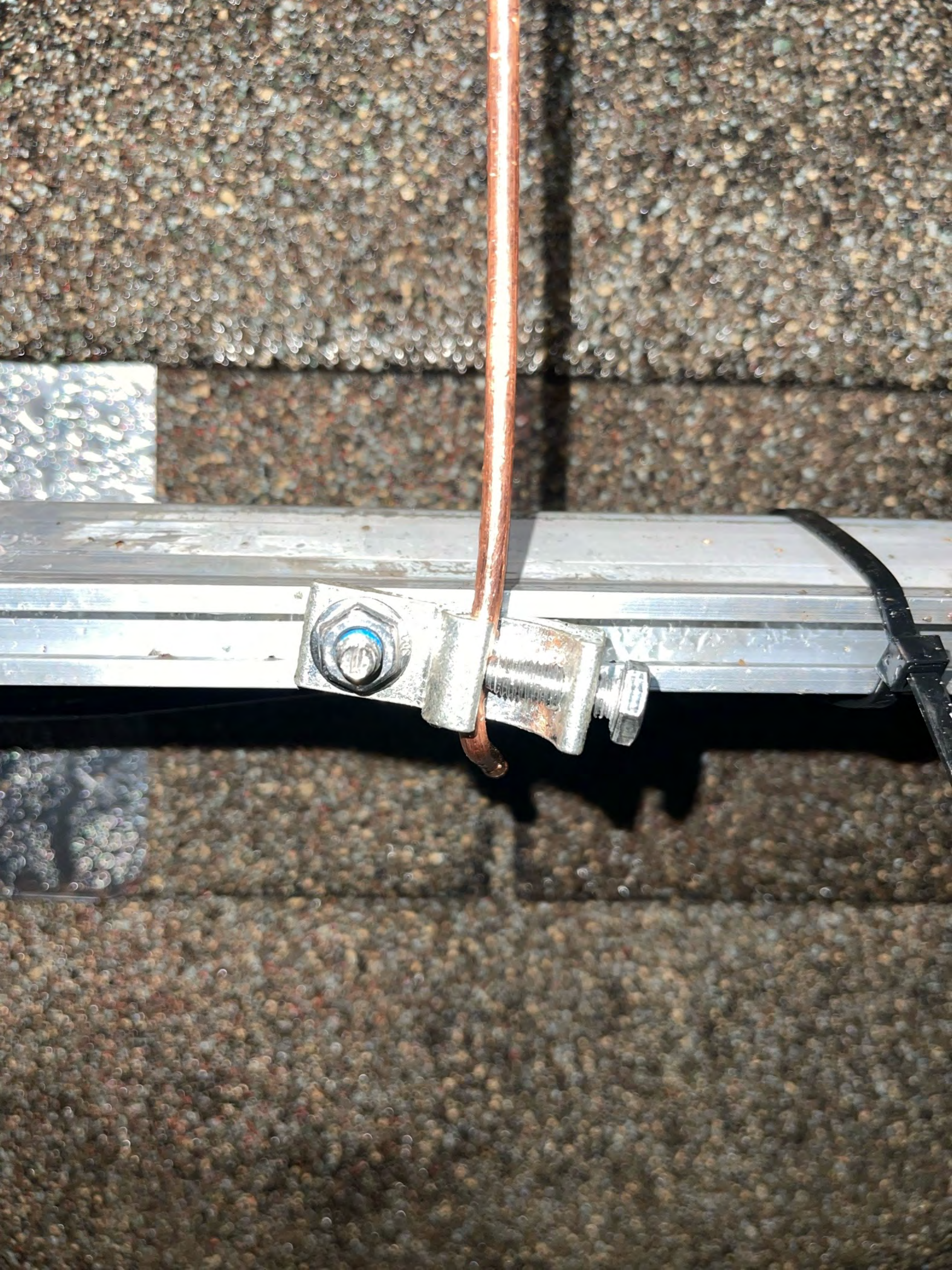
















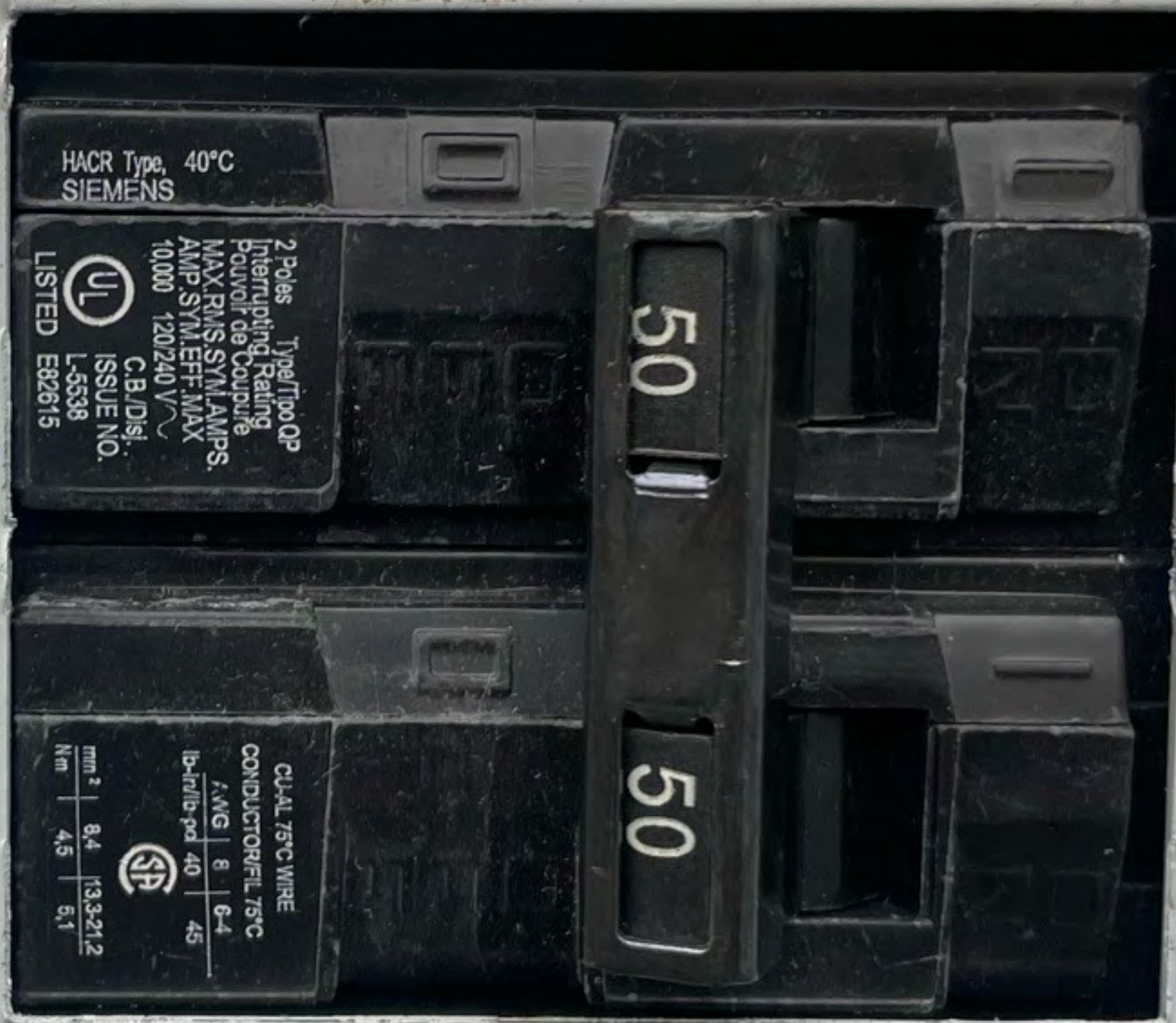


WARNING

SOLAR ELECTRIC CIRCUIT BREAKER IS BACKFED

pvlabals.com

05-342



HACR Type, 40°C
SIEMENS

2 Poles Type/Tipo, Op
Interrupting Rating
Pouvoir de Coupure
MAX RMS SYM AMPS
AMP SYM EFF. MAX
10,000 120/240 V
C.B./Disj.
ISSUE NO.
L-55338
LISTED E82615

50

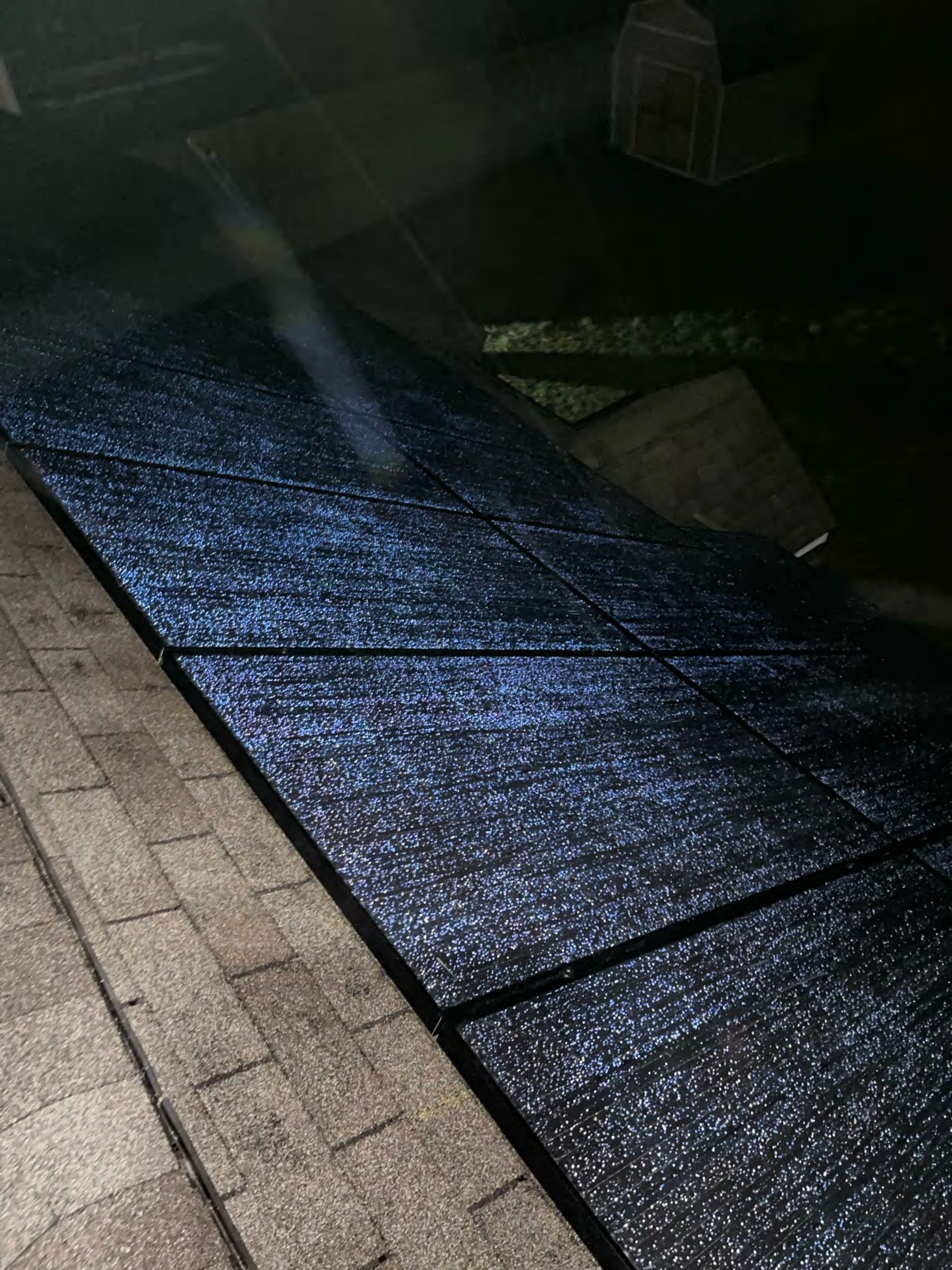
50

CU-AL 75°C WIRE
CONDUCTOR/FIL 75°C
AWG 8 6-4
B-trib-pd 40 45
mm² 8.4 13.3-21.2
Nm 4.5 5.1

pvlabals.com

PHOTOVOLTAIC SOLAR BREAKER

05-343



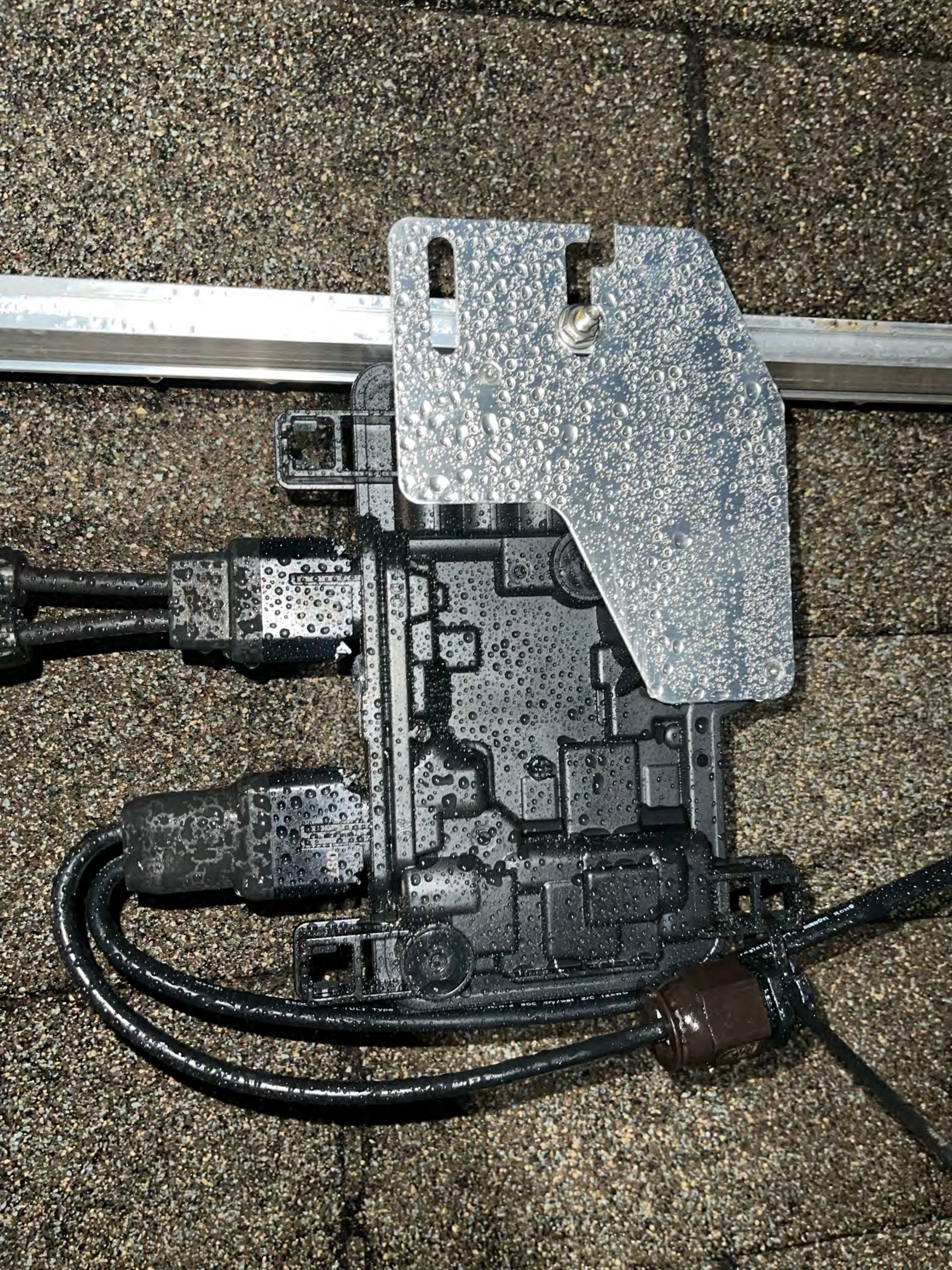




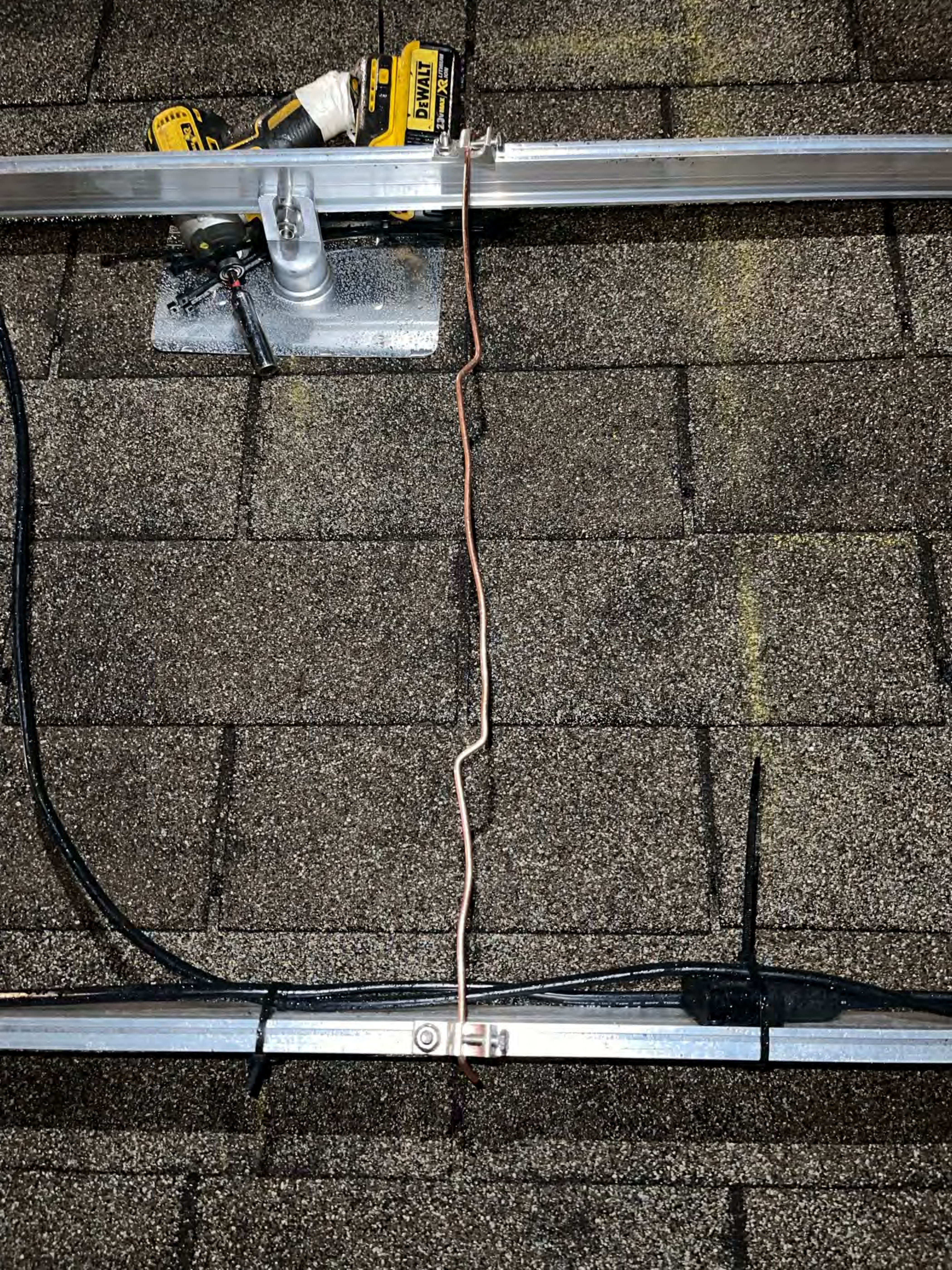


940-00380
250VAC 20
179°C 222

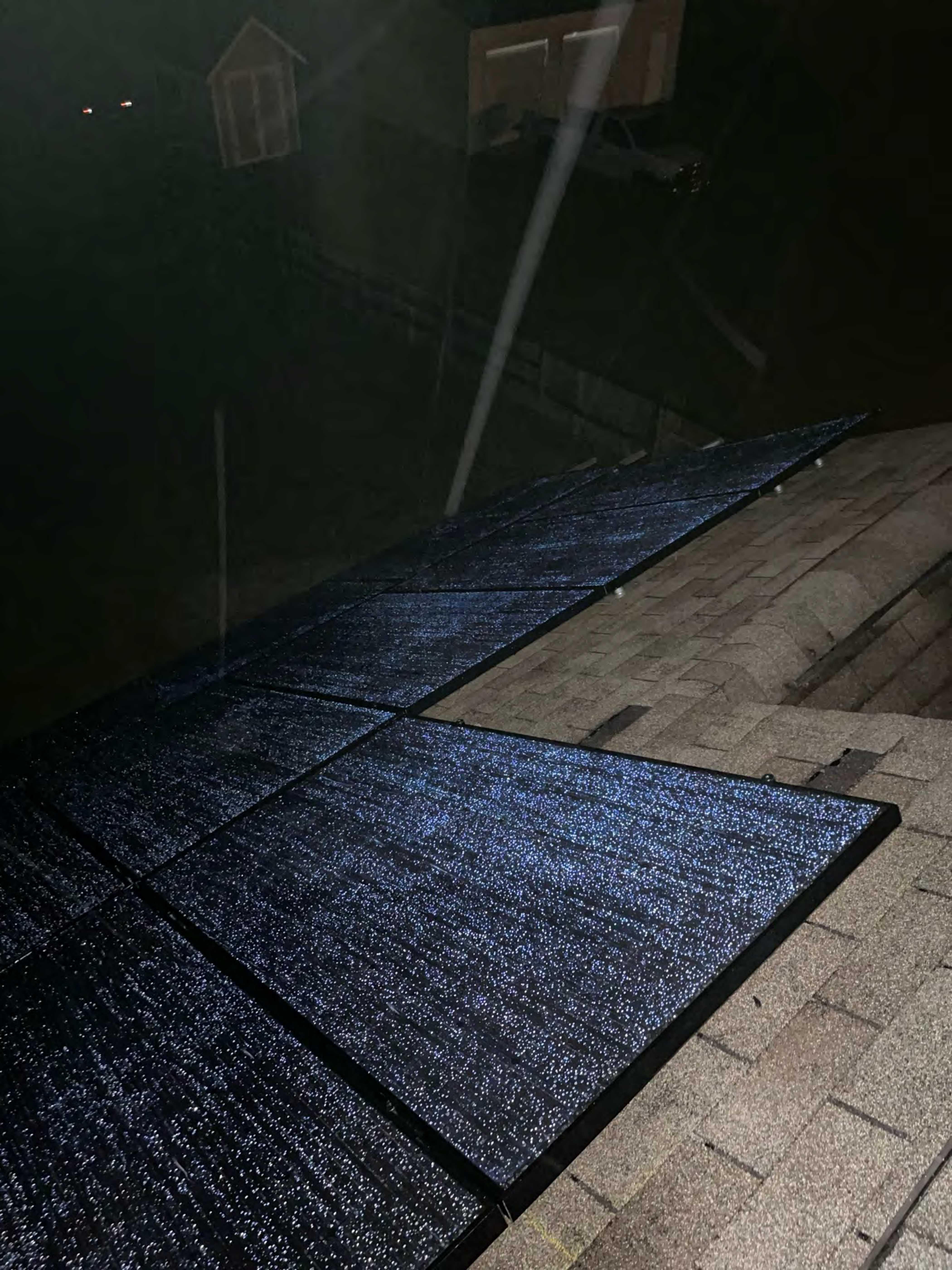
90
100











AC JUNCTION BOX

 **WARNING**

ELECTRIC SHOCK HAZARD

DO NOT TOUCH TERMINALS
TERMINALS ON BOTH THE LINE AND
LOAD SIDES MAY BE ENERGIZED

pvlabs.com IN THE OPEN POSITION 05-219

CAUTION SOLAR CIRCUIT





Serial No **M220705-A1038**



Model Number	MSE385SX5R
Rated Maximum Power	[W] 385 (-0/+3%)
Open – Circuit Voltage	[V] 45.0
Voltage at Pmax	[V] 36.9
Short – Circuit Current	[A] 10.97
Current at Pmax	[A] 10.42
Max. System Voltage	[V] 1000
Max. Series overcurrent protective device (where required) fuse rating	[A] 20
Standard test condition	AM=1.5 E=1000W/m² Tc=25°C



For field connections, use Cu only, 12AWF (US, CANADA), 4mm2 (EU, Asia) wires insulated for a minimum of 90°C, rated for wet conditions and resistant to ultra violet radiation (where exposed). See installation manual for PV connector details and compatibility. Avertissement Risque de choc électrique. Ce module produit des tensions élevées dans la lumière du soleil. Risque électrique peut choquer, brûler ou de provoquer la mort. Ne pas toucher la borne.

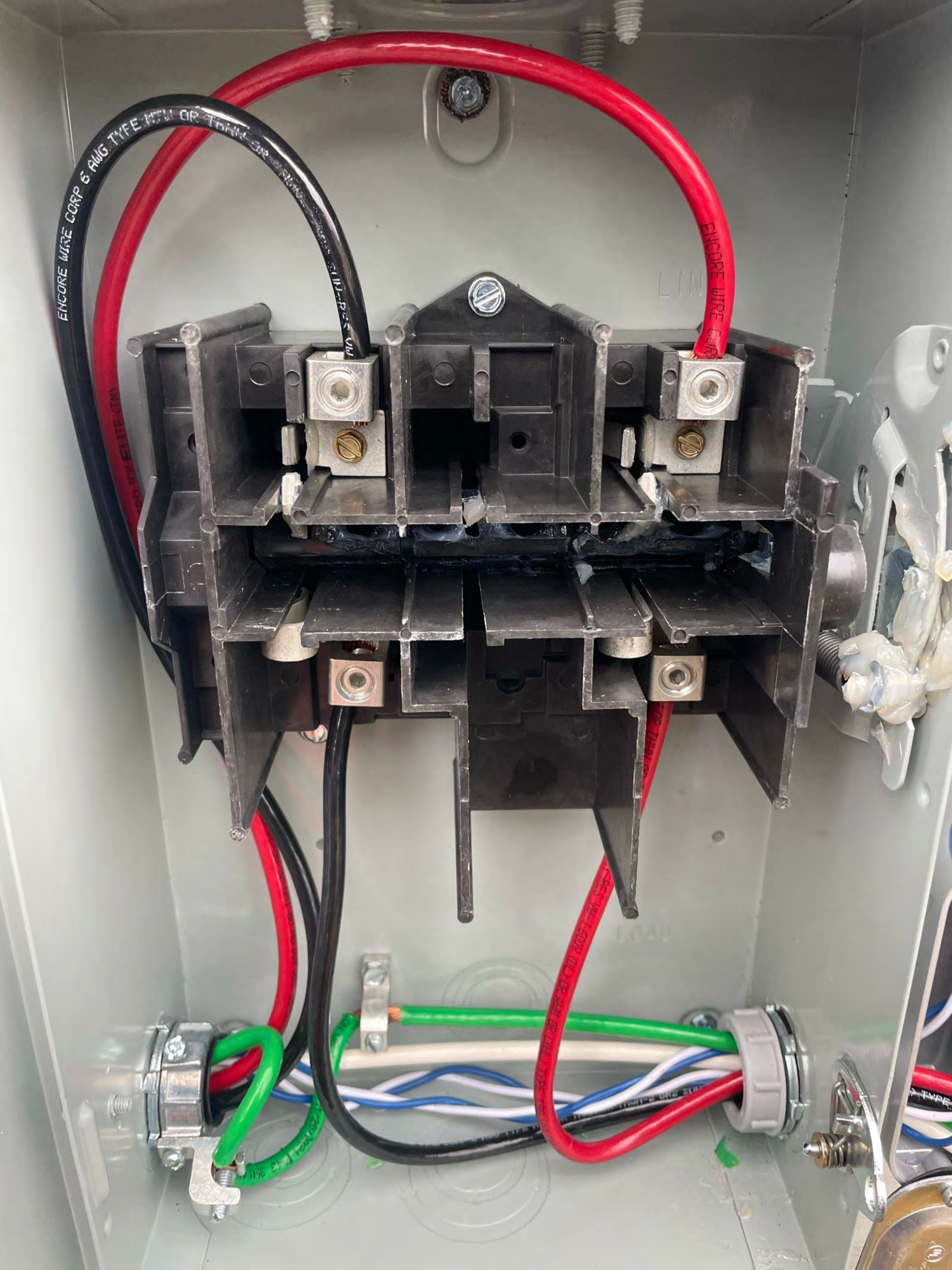


Fire Rating : Type 1
 Class of Equipment: Class II
 Design Load: Minimum 3600 Pa front and minimum 1600 Pa back load

Warning
 PV modules generate voltage even with very weak light. Do not open the junction box. Les modules PV produisent tension même en basse lumière.
 Ne pas ouvrir la boîte de jonction.



Address:
 8303 S. New Braunfels Ave.
 San Antonio, TX 78235
ASSEMBLED IN THE USA





 **WARNING**

PHOTOVOLTAIC SYSTEM
COMBINER PANEL

DO NOT ADD LOADS

 **WARNING**

ELECTRIC SHOCK HAZARD

TERMINALS ON THE LINE AND
LOAD SIDES MAY BE ENERGIZED
IN THE OPEN POSITION

PV SYSTEM DISCONNECT

 **WARNING**

ELECTRIC SHOCK HAZARD
TERMINALS ON THE LINE
AND LOAD SIDES
MAY BE ENERGIZED
IN THE OPEN POSITION

 **ENPHASE**



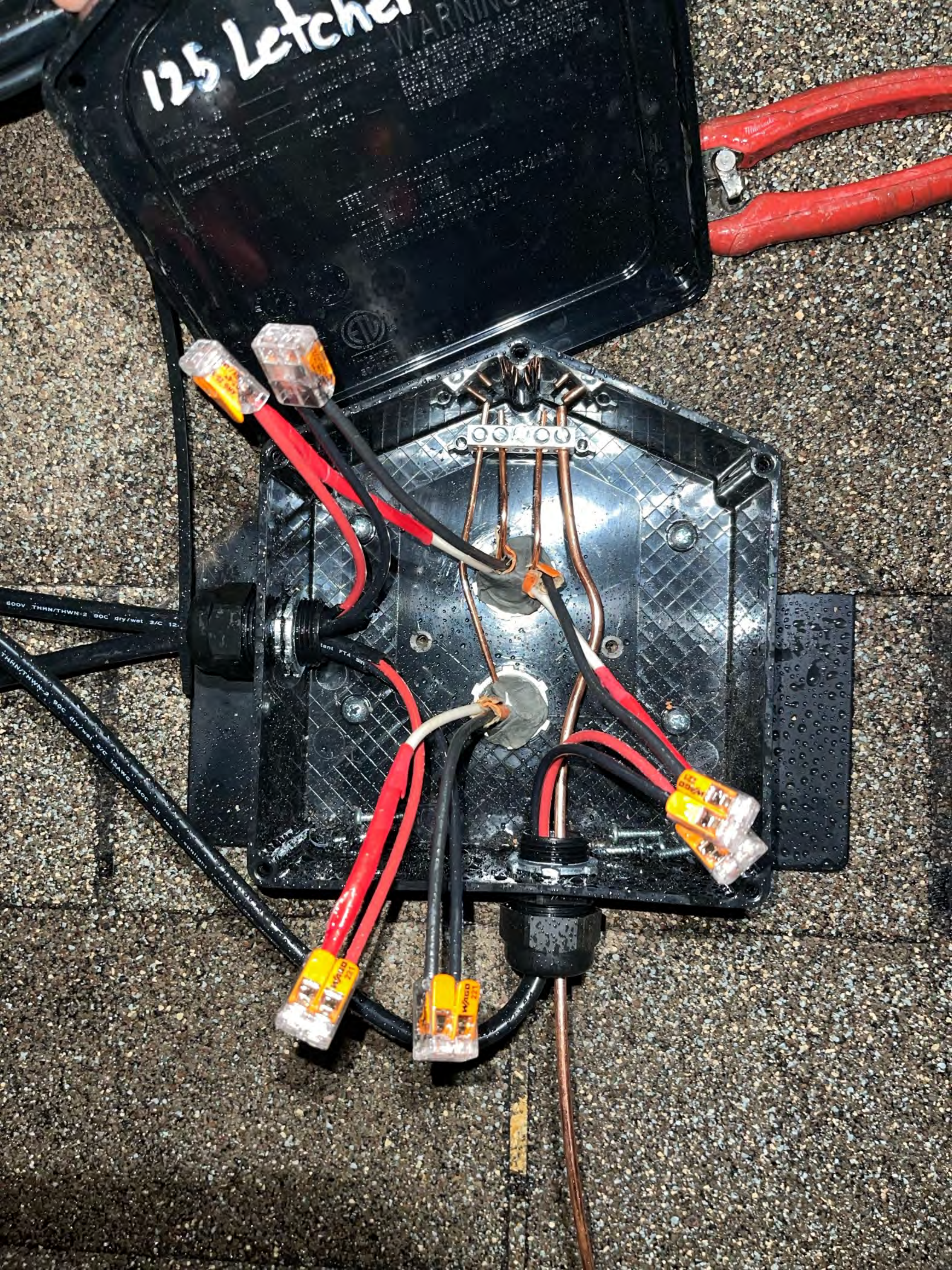


STYL
MES
R/C
S/D
S/E
S/F
S/G
S/H
S/I
S/J
S/K
S/L
S/M
S/N
S/O
S/P
S/Q
S/R
S/S
S/T
S/U
S/V
S/W
S/X
S/Y
S/Z

Blue label with illegible text and markings.

THE UNIVERSITY OF CHICAGO
LIBRARY

125 Latches





WARNING
DUAL POWER SUPPLY
SOURCES: UTILITY GRID
AND PV SOLAR
ELECTRIC SYSTEM

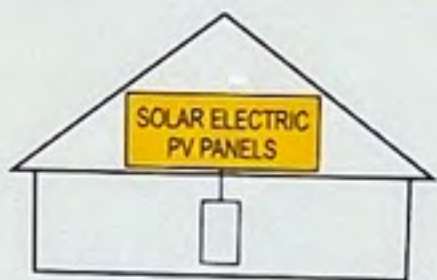
PV SYSTEM kWh METER

WARNING
TURN OFF PHOTOVOLTAIC
AC DISCONNECT PRIOR TO
WORKING INSIDE PANEL

WARNING
ELECTRIC SHOCK HAZARD
TERMINALS ON THE LINE AND
LOAD SIDES MAY BE ENERGIZED
IN THE OPEN POSITION

WARNING
THIS EQUIPMENT FED BY MULTIPLE
SOURCES. TOTAL RATING OF ALL
OVERCURRENT DEVICES, EXCLUDING
MAIN SUPPLY OVERCURRENT
DEVICE, SHALL NOT EXCEED
AMPACITY OF BUSBAR.

**SOLAR PV SYSTEM
EQUIPPED WITH
RAPID SHUTDOWN**



TURN RAPID SHUTDOWN SWITCH TO
THE "OFF" POSITION TO SHUT DOWN
PV SYSTEM AND REDUCE
SHOCK HAZARD IN THE ARRAY



EATON

General Duty Safety Switch
Interrupteur de sécurité à usage général
Interruptor de seguridad de servicio general

60 A, 240 V~, 60 Hz

Complete ratings inside
Valeurs nominales complètes à l'intérieur
Información completa de capacidades en el interior

Further instructions inside
Autres instructions à l'intérieur
Instrucciones adicionales en el interior

Made in U.S.A. / Fabriqué aux É.-U. / Hecho en E.U.A.

⚠ DANGER
HAZARDOUS VOLTAGE. WILL CAUSE SEVERE INJURY OR DEATH.
• Never operate switch with cover open.
• Turn OFF power ahead of switch before doing any work inside. Replace all parts. Close cover before turning power ON.

TENSION DANGEREUSE. PEUT CAUSER DES BLESSURES GRAVES OU LA MORT.
• Ne jamais manœuvrer l'interrupteur lorsque le couvercle est ouvert.
• Couper l'alimentation en amont de l'interrupteur avant toute intervention. Remplacer les pièces. Fermer le couvercle avant de remettre sous tension.

⚠ PELIGRO
VOLTAJE PELIGROSO. PUEDE CAUSAR HERIDAS SEVERAS O LA MUERTE.
• Nunca opere el interruptor con la cubierta abierta.
• Desconectar la alimentación del interruptor antes de trabajar dentro del mismo. Reemplazar todas las partes. Cerrar la cubierta antes de energizar el interruptor.

30-43080



AC DISCONNECT
PHOTOVOLTAIC SYSTEM
POWER SOURCE

RATED AC OUTPUT CURRENT **50** AMPS
NOMINAL OPERATING AC VOLTAGE **240** VOLTS

RAPID SHUTDOWN
SWITCH FOR
SOLAR PV SYSTEM

ON

OFF



2138 5203 NA (P113)

R0010

BED 12345 BATH 123 LR FR DR K UT OTHER 1234

LOCK ELITE (TM)

MANUFACTURED UNDER PAT. NO. 8,658,576

2138 5203 NA (P113)

SUPERLICK ELITE

250 VAC MAX.
200A 0.5V 45-65HZ
↑

250 VAC MAX.
200A 0.5V 45-65HZ
↑



EATON®

General Duty Safety Switch
Interrupteur de sécurité à usage général
Interruptor de seguridad de servicio general

60 A, 240 V~, 60 Hz

Complete ratings inside
Valeurs nominales complètes à l'intérieur
Información completa de capacidades en el interior

Further instructions inside
Autres instructions à l'intérieur
Instrucciones adicionales en el interior

Made in U.S.A. / Fabriqué aux É.-U. / Hecho en E.U.A.



⚠ DANGER

HAZARDOUS VOLTAGE. WILL CAUSE SEVERE INJURY OR DEATH.

- Never operate switch with cover open.
- Turn OFF power ahead of switch before doing any work inside. Replace all parts. Close cover before turning power ON.

TENSION DANGEREUSE. PEUT CAUSER DES BLESSURES GRAVES OU LA MORT.

- Ne jamais manœuvrer l'interrupteur lorsque le couvercle est ouvert.
- Couper l'alimentation en amont de l'interrupteur avant toute intervention. Remplacer les pièces. Fermer le couvercle avant de remettre sous tension.

⚠ PELIGRO

VOLTAJE PELIGROSO. PUEDE CAUSAR HERIDAS SEVERAS O LA MUERTE.

- Nunca opere el interruptor con la cubierta abierta.
- Desconectar la alimentación del interruptor antes de trabajar dentro del mismo. Reemplazar todas las partes. Cerrar la cubierta antes de energizar el interruptor.

30-43080





125





