















BATTERY TYPE: LiFePO₄
BATTERY CAPACITY: 3.36 kWh
BATTERY NOMINAL VOLTAGE: 67.2 VDC
REFER TO HANDLING AND DISPOSAL
REQUIREMENTS IN PRODUCT MANUAL.



ENCHARGE

890-00026 25 6521 122152016966



WARNING! ATTENTION!

RISKS OF ELECTRIC SHOCK/ENERGY
HAZARD AND CHEMICAL HAZARD.
DO NOT DISASSEMBLE.

RISQUES D'ÉLECTROCUTION/DANGER
ÉNERGIE ET PRODUITS CHIMIQUES.
NE PAS DÉMONTER.

RISK OF ELECTRIC SHOCK. AC
VOLTAGE IS PRESENT AT THE
OUTPUT WHEN DC SWITCH IS ON.

RISQUE DE CHOC ÉLECTRIQUE. LA
TENSION ALTERNATIVE (AC) EST
PRÉSENTE À LA SORTIE LORSQUE
LE COMMULATEUR CC (COURANT
CONTINUE DC) EST ACTIVÉ.

BRANCH CIRCUIT PROTECTION MUST BE
OFF BEFORE SWITCHING DC POWER ON OR
OFF.

LA PROTECTION DU CIRCUIT DE DÉRIVATION
DOIT ÊTRE DÉSACTIVÉE AVANT LA MISE
SOUS /HORS TENSION DU COURANT
CONTINU (DC)

DC SWITCH MUST BE OFF FOR SHIPPING
AND SERVICE.

L'INTERRUPTEUR CC (COURANT CONTINU)
DOIT ÊTRE ÉTEINT POUR L'EXPÉDITION ET
LA MAINTENANCE.



DC DISCONNECT SWITCH



WARNING PHOTOVOLTAIC
POWER SOURCE





WARNING: PHOTOVOLTAIC
POWER SOURCE

DEWALT
20V





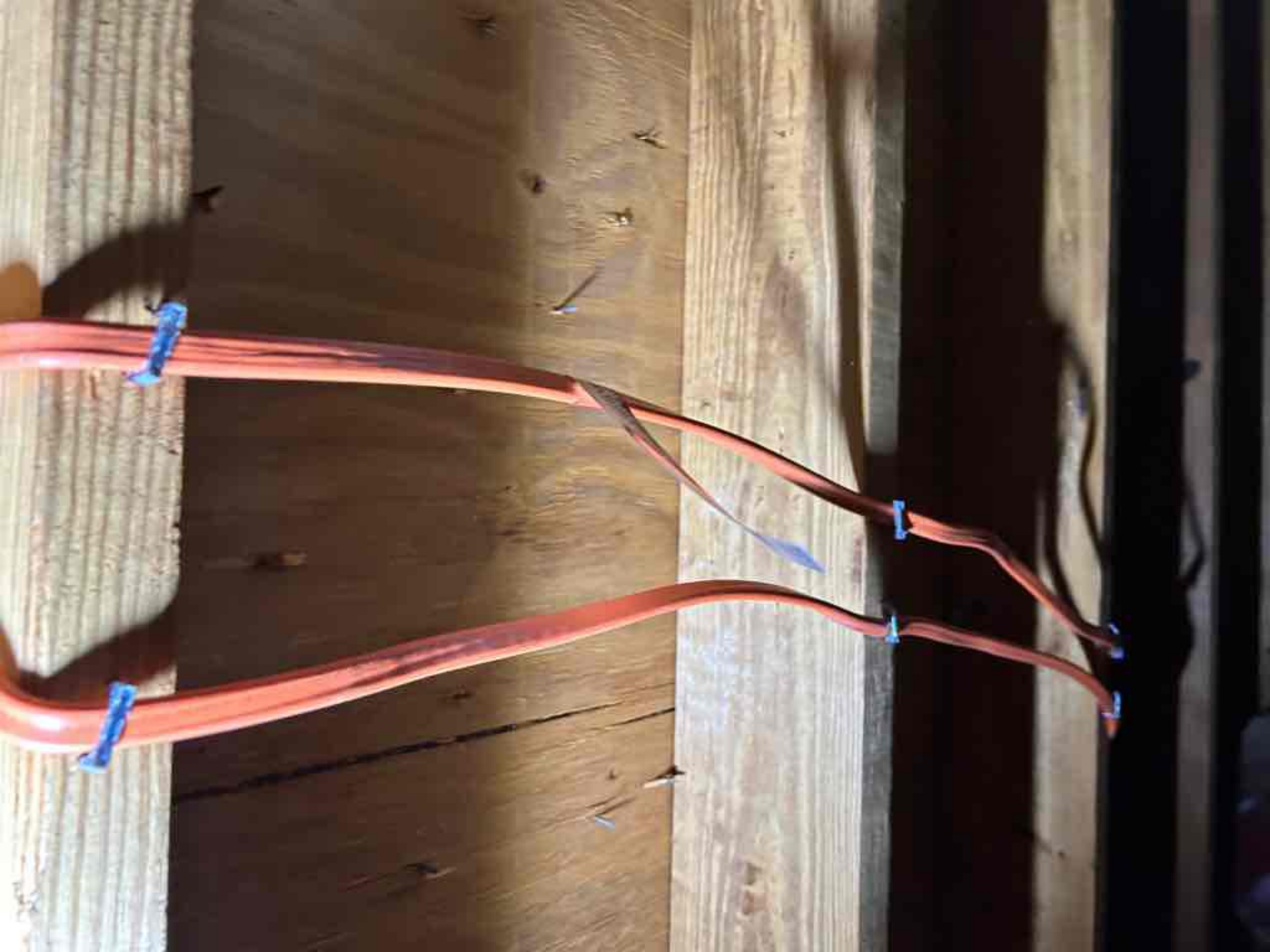


BRNNGS PHOTOVOLTAIC
POWER SOURCE

UNSURE

DEWALT

DEWALT





WARNING
PROTECT YOUR LIFE
POWER SOURCE

API OTTE

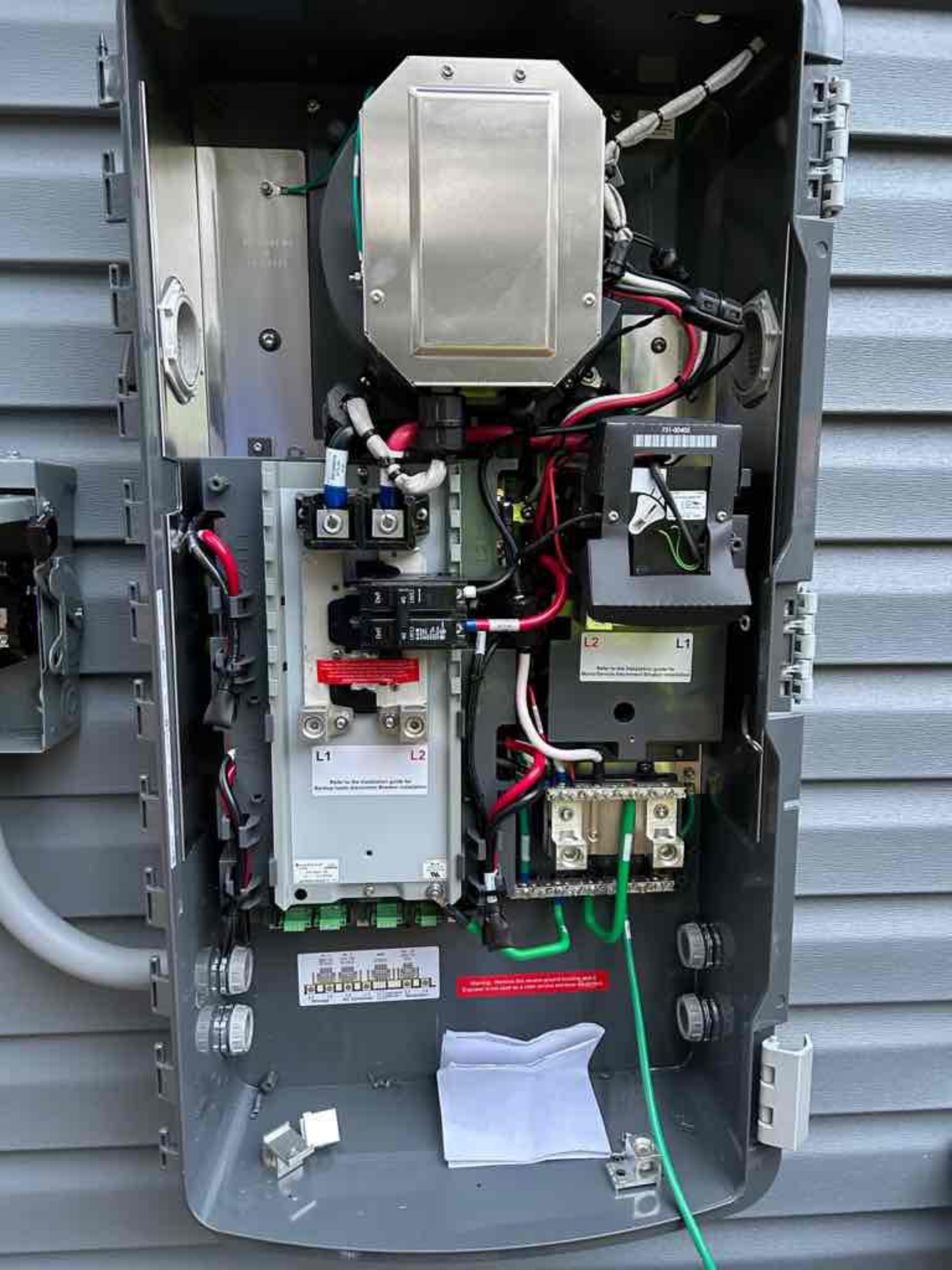
1000
1000



L2

L1

Refer to the installation guide for
Main/Service disconnect Breaker installation



L1 L2
Refer to the installation guide for
Backup Switch operation. See the installation

L2 L1
Refer to the installation guide for
Backup Switch operation. See the installation



Warning: Remove the main circuit breaker and a
circuit breaker on a main circuit before starting.





L1

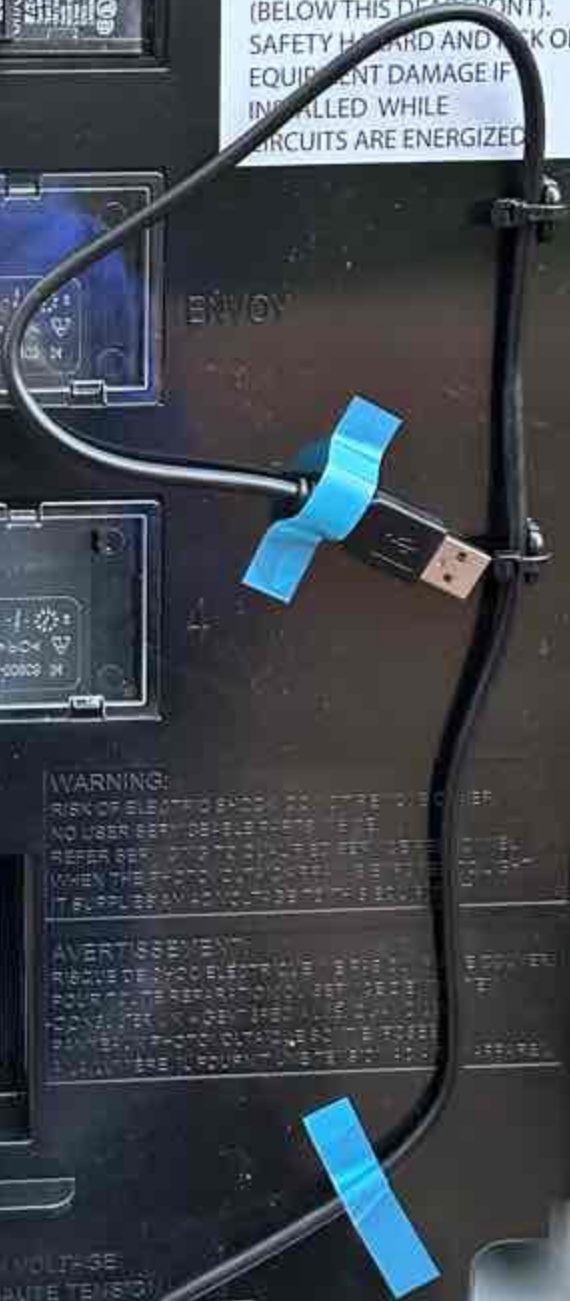
Function





WARNING
 DE-ENERGIZE ALL CIRCUITS BEFORE INSTALLING THE CT LEAD WIRES (BELOW THIS DEPARTMENT). SAFETY HAZARD AND RISK OF EQUIPMENT DAMAGE IF INSTALLED WHILE CIRCUITS ARE ENERGIZED

WARNING
 WIRE IQ GATEWAY L1 AND L2 TO IQ SYSTEM CONTROLLER 2 FOR IQ8 GRID FORMING SYSTEMS - INSTRUCTIONS IN IQ8



WARNING:
 RISK OF ELECTRIC SHOCK. NO USER SERVICEABLE PARTS.
 REFER TO THE INSTRUCTIONS WHEN THE PRODUCT IS USED.
 RISK OF ELECTRIC SHOCK. NO USER SERVICEABLE PARTS.
 REFER TO THE INSTRUCTIONS WHEN THE PRODUCT IS USED.

AVERTISSEMENT:
 RISQUE DE CHOC ÉLECTRIQUE. PAS DE PIÈCES DÉTACHABLES À L'USAGE DE L'UTILISATEUR.
 SE RÉFÉRER AUX INSTRUCTIONS D'UTILISATION QUAND LE PRODUIT EST UTILISÉ.

WARNING: HIGH VOLTAGE - 250V
 ATTENTION: HAUTE TENSION









