







ENGINEERED, DESIGNED AND QUALITY TESTED BY Q CELLS IN GERMANY

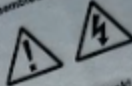
Q.PEAK DUO BLK ML-G10+ 400

Q CELLS

Assembled in USA

PERFORMANCE AT STANDARD TEST CONDITIONS*

Nominal Power* P_{nom} [W]	400
Short circuit current* I_{sc} [A]	11.14
Open circuit voltage* V_{oc} [V]	48.30
Current at maximum power I_{mp} [A]	10.77
Voltage at maximum power V_{mp} [V]	37.13
Maximum system voltage V_{ms} [V]	1000 (IEC)
	1000 (UL)
Weight	22.0 / 48.5
	kg / lbs

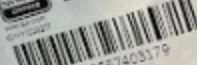
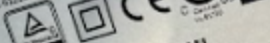


DANGER!
Risk of electric shock!
DO NOT connect or disconnect plug contacts while system is under load current. Refer to the installer and Operation Manual before installing, operating or servicing this unit.

DANGER!
Risque de choc électrique!
NE PAS connecter ou déconnecter le système est en charge. Consulter le manuel d'installation et d'utilisation avant installation, utilisation et entretien du produit.

Fire Rating: Class C / Type 2
Design load: 55 lb/ft²
Fuse Rating: 20 A
For field connections, use minimum No.12 AWG copper wires insulated for a minimum of 90 °C

*Measurement tolerance: P_{nom} ± 3%, I_{sc} , V_{oc} ± 5% at STC: 1000 W/m², 25 ± 2 °C
AM, US according to IEC 60049-2. Data given are rated (nominal) values.



20192203557408179

U.S. Patent No. 9,893,215
(see cells)

EMAIL: serv@q-cells.com
WEB: www.q-cells.com

Maxima Q CELLS USA Inc.
800 Texas Drive, Canyon, CA 92701, USA
Certification holder: Maxima Q CELLS GmbH

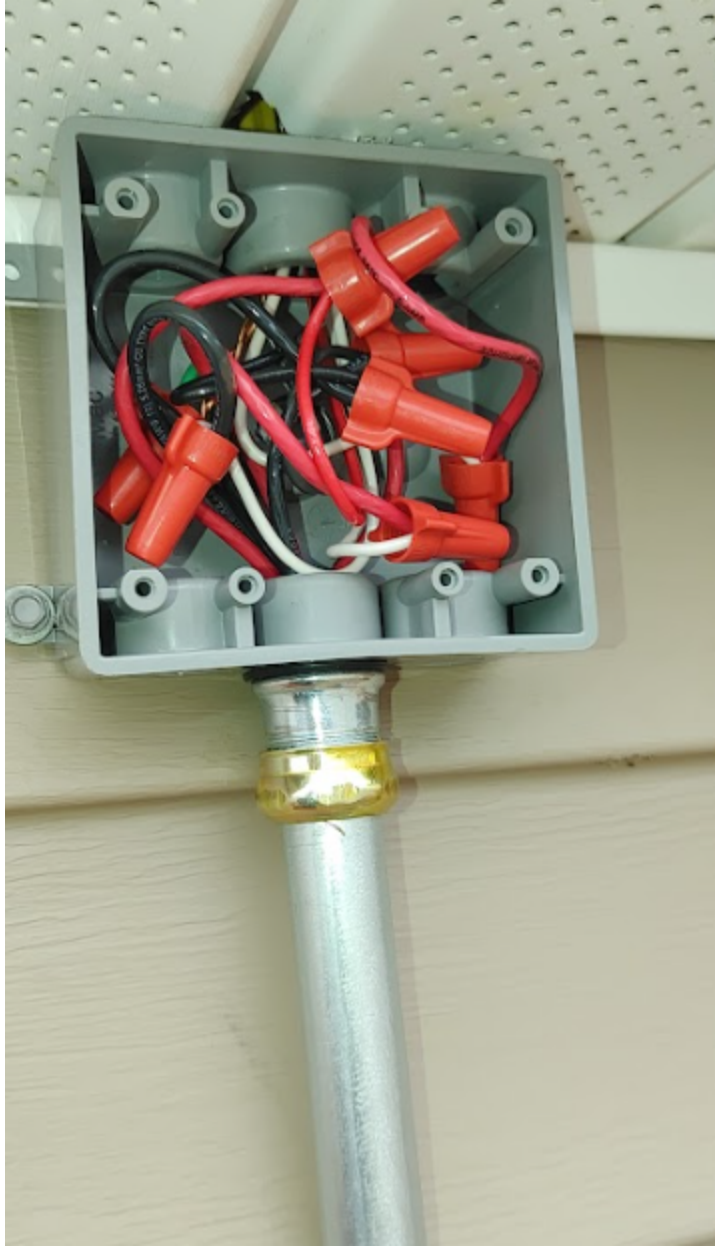


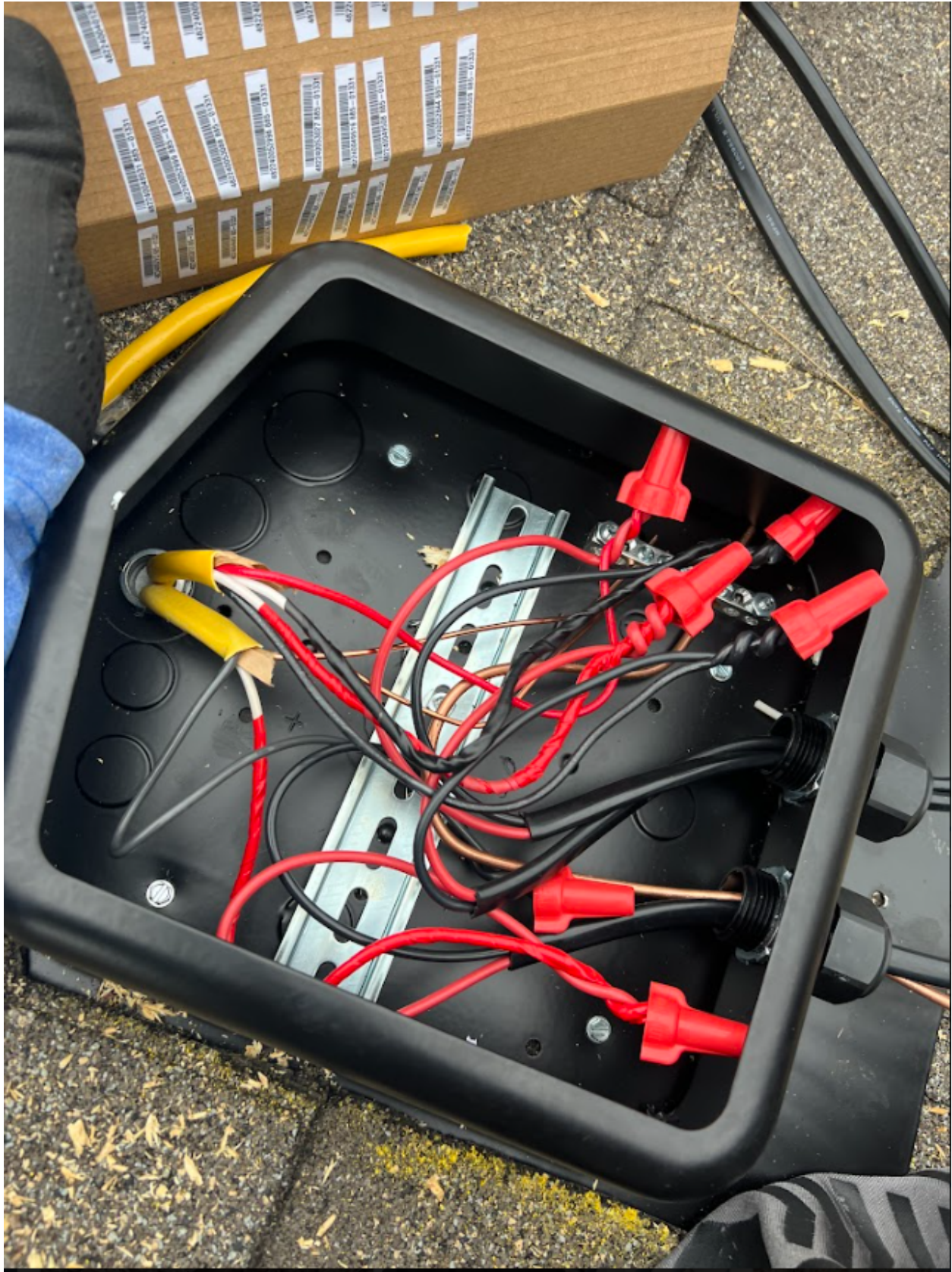












DR HOBSON
America's Builder

Congratulations on the purchase of your new
Central Station to serve important warranty
information.

To schedule a general warranty request, visit our
website, www.dr-hobson.com, under the warranty link.
You will then see the link to request warranty service.
You can also reach us by phone Monday-Friday 8:30
AM to 5:00 PM EST or by email customerservice@dr-hobson.com
or 1-800-871-8887.

For warranty service needed on the mechanical
components of your home, please contact the
appropriate service factor.

Plumbing: The Home Depot (800) 368-4444
Electrical: American Electric (800) 368-4444
HVAC: Armstrong Heating & Cooling (800) 368-4444
Fireplaces: Fireplace Inserts and More (800) 368-4444
Roofing: The Home Depot (800) 368-4444
Siding: The Home Depot (800) 368-4444

PHOTOVOLTAIC SYSTEM
AC DISCONNECT

WARNING

DUAL POWER SUPPLY
ELECTRIC SHOCK HAZARD

DO NOT TOUCH TERMINALS OR WIRING
OR OPEN THE COVER OF THIS DISCONNECT
UNTIL YOU HAVE BEEN ADVISED TO DO SO
BY A QUALIFIED ELECTRICIAN

OPERATING VOLTAGE: 120 VOLT
OPENING CURRENT: 20.0 A MPS

**SOME PV SYSTEMS EQUIPPED
WITH RAPID SHUTDOWN**

INSTALLATION INSTRUCTIONS
SEE THE INSTALLATION MANUAL
FOR THIS MODEL
OR VISIT [WWW.DR-HOBSON.COM](http://www.dr-hobson.com)

