

Ashim Ghimire

195 Red Cedar Way

Fuqay-Varina , NC 27526







ENGINEERED, DESIGNED AND QUALITY TESTED BY Q CELLS IN GERMANY

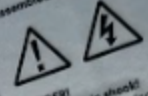
## Q.PEAK DUO BLK ML-G10+ 400

**Q CELLS**

Assembled in USA

**PERFORMANCE AT STANDARD TEST CONDITIONS\***

Nominal Power* $P_{max}$ (W)	400
Short circuit current* $I_{sc}$ (A)	11.14
Open circuit voltage* $V_{oc}$ (V)	48.30
Current at maximum power $I_{mp}$ (A)	10.77
Voltage at maximum power $V_{mp}$ (V)	37.13
Maximum system voltage $V_{ms}$ (V)	1000 (IEC)
	1000 (UL)
Weight	22.0 / 48.5
	kg / (lb)



**DANGER!**  
Risk of electric shock!  
DO NOT connect or disconnect plug contacts while system is under load current. Refer to the Installation and Operation Manual before installing, operating or servicing this unit.

**DANGER!**  
**Risque de choc électrique!**  
NE PAS connecter ou déconnecter le système est en charge. Consulter le manuel d'installation et d'utilisation avant installation, utilisation et entretien du produit.

**Fire Rating:** Class C / Type 2  
**Design load:** 55 lb/m<sup>2</sup>  
**Fuse Rating:** 20 A  
For field connections, use minimum No.12 AWG copper wires insulated for a minimum of 90 °C

\*Measurement tolerance:  $P_{max}$  ± 3%,  $I_{sc}$ ,  $V_{oc}$  ± 5% at STC: 1000 W/m<sup>2</sup>, 25 ± 2 °C  
AM, US according to IEC 60049-2. Data given are rated (nominal) values.



20192203557408179

U.S. Patent No. 9,893,215  
(see cells)

EMAIL: [serv@q-cells.com](mailto:serv@q-cells.com)  
WEB: [www.q-cells.com](http://www.q-cells.com)

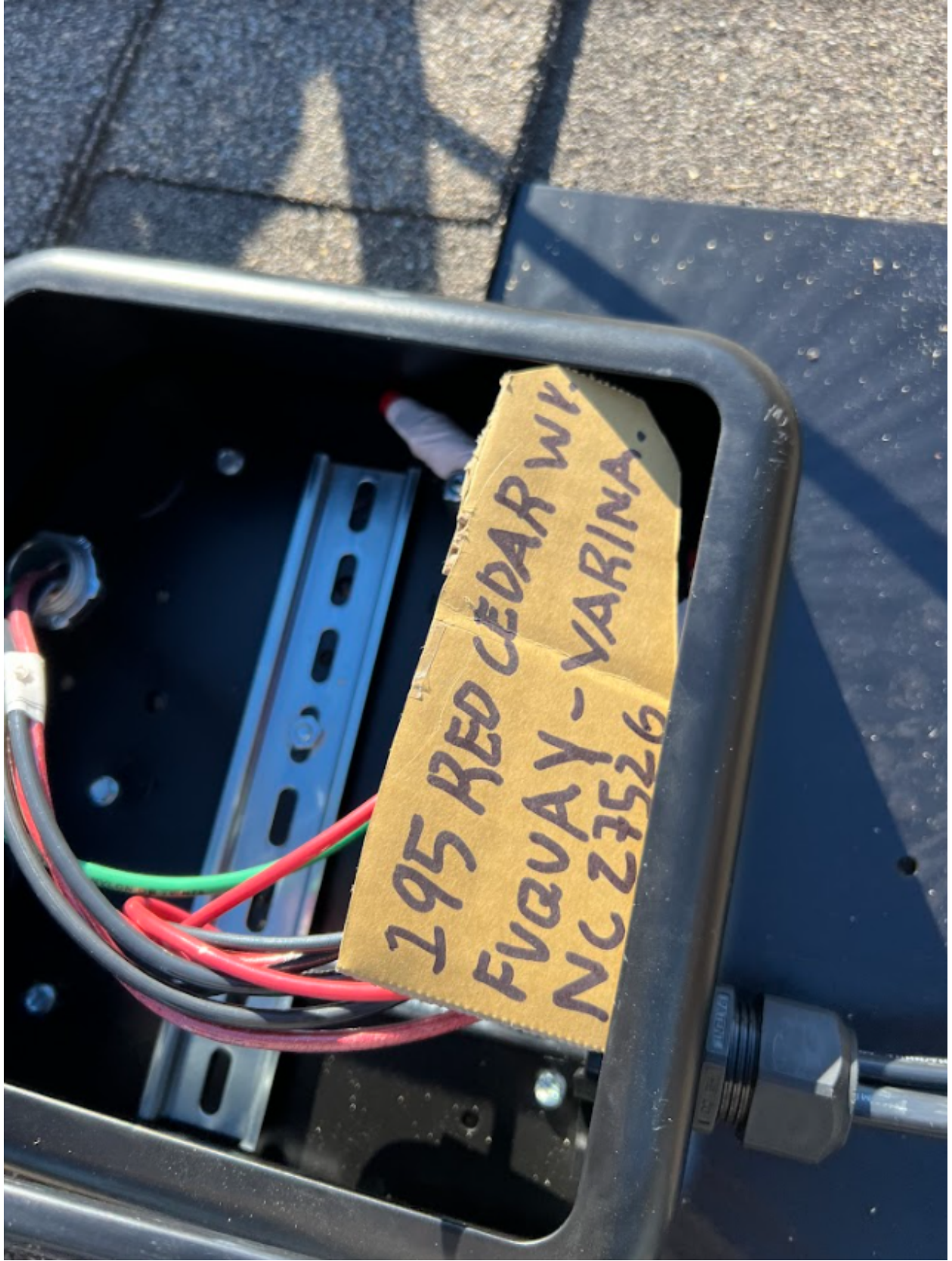
Hersteller Q CELLS USA Inc.  
800 Lewis Drive, Canyon, CA 92513, USA  
Certification Number: H04046 Q CELLS GmbH











195 RED CEDAR WK  
FUGUAY - VARINA  
NC 27526

**ORION**  
*American Builder*

Congratulations on the purchase of your new Orion. There is some important safety information.

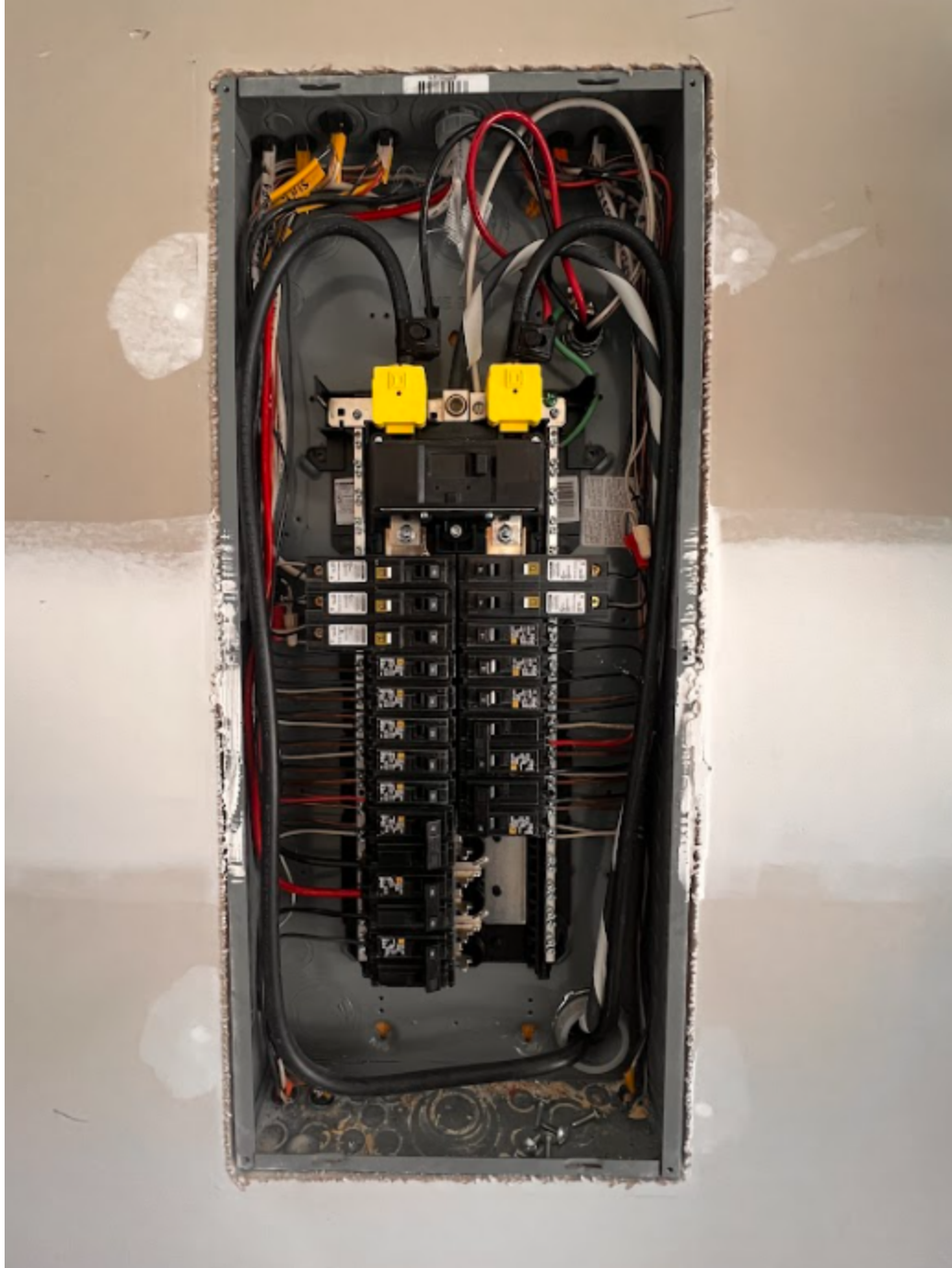
To maintain a general warranty against, visit our website [www.americanbuilder.com](http://www.americanbuilder.com) for the complete warranty information. You will find the full 10-year warranty details. You can also visit us at [www.americanbuilder.com](http://www.americanbuilder.com). Please print and read to the other two instructions at 1000-1000.

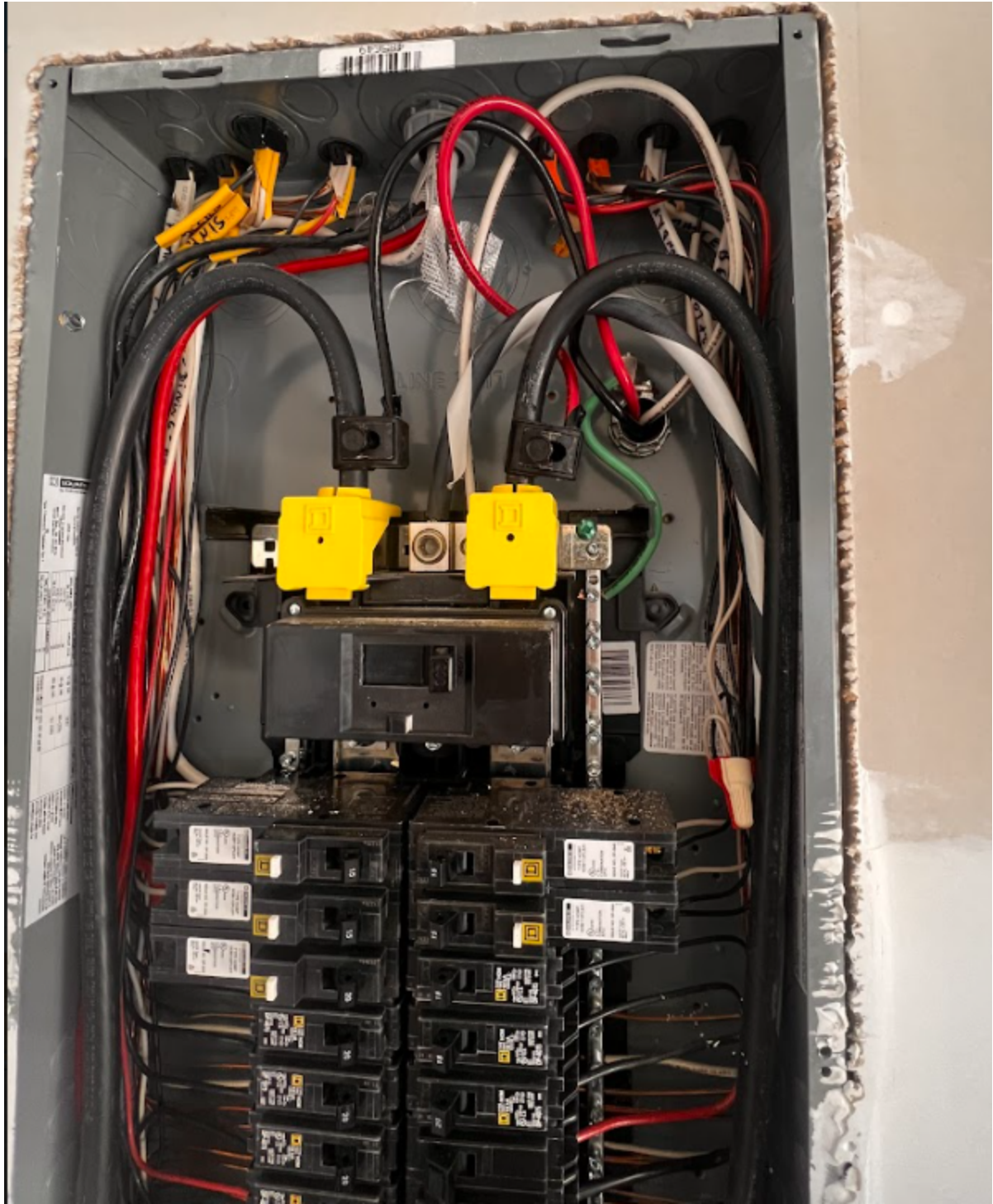
For additional information on the safe features, visit our website.

Modeling: Please Contact 1-800-333-3333  
Electrical: Please Contact 1-800-333-3333  
Warranty: Please Contact 1-800-333-3333  
Product: Please Contact 1-800-333-3333  
Safety: Please Contact 1-800-333-3333  
Accessories: Please Contact 1-800-333-3333

**WARNING**  
SEE USER MANUAL FOR  
SAFETY INFORMATION







**SOLAR PV SYSTEM EQUIPPED WITH RAPID SHUTDOWN**

TURN RAPID SHUTDOWN SWITCH TO THE "OFF" POSITION TO SHUT DOWN CONDUCTORS OUTSIDE THE ARRAY. CONDUCTORS WITHIN ARRAY REMAIN ENERGIZED IN SUNLIGHT



**WARNING: PHOTOVOLTAIC POWER SOURCE**

OpenWay  
CL200 240V 78 TYPE C2M 30TA 1.0Kh  
\*ZZZ 009432 H67\*  
DUKE ENERGY PROGRESS  
339 597 787  
F12503  
OpenWay  
1.01

A digital meter display showing "sync net". The meter is circular with a clear plastic cover and is mounted on a grey metal panel.

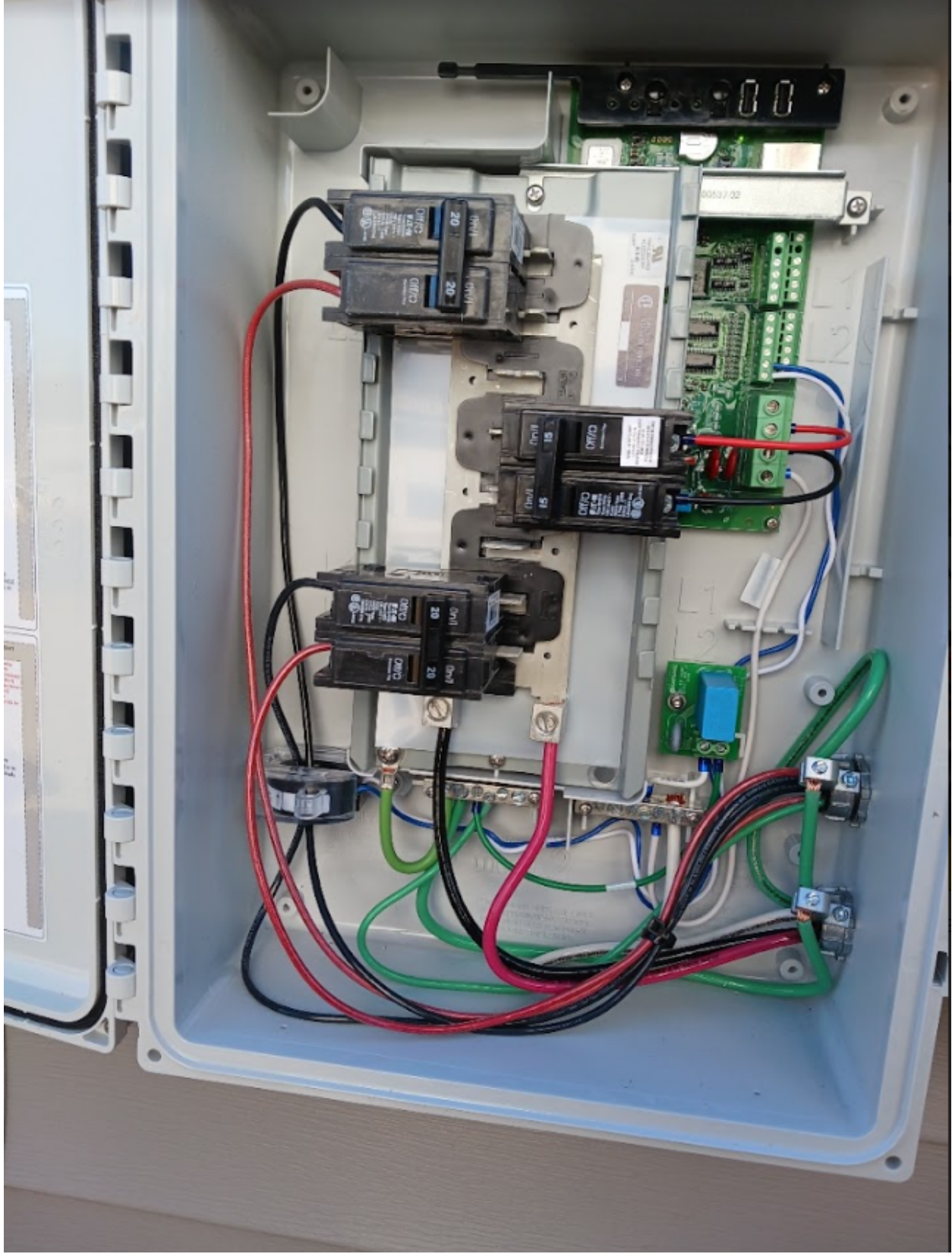
Hamett County Inspections  
Address \_\_\_\_\_  
Inspector \_\_\_\_\_  
12/20/14

**WARNING**  
**ELECTRICAL SHOCK HAZARD**  
TERMINALS ON THE LINE AND LOAD SIDES MAY BE ENERGIZED IN THE OPEN POSITION

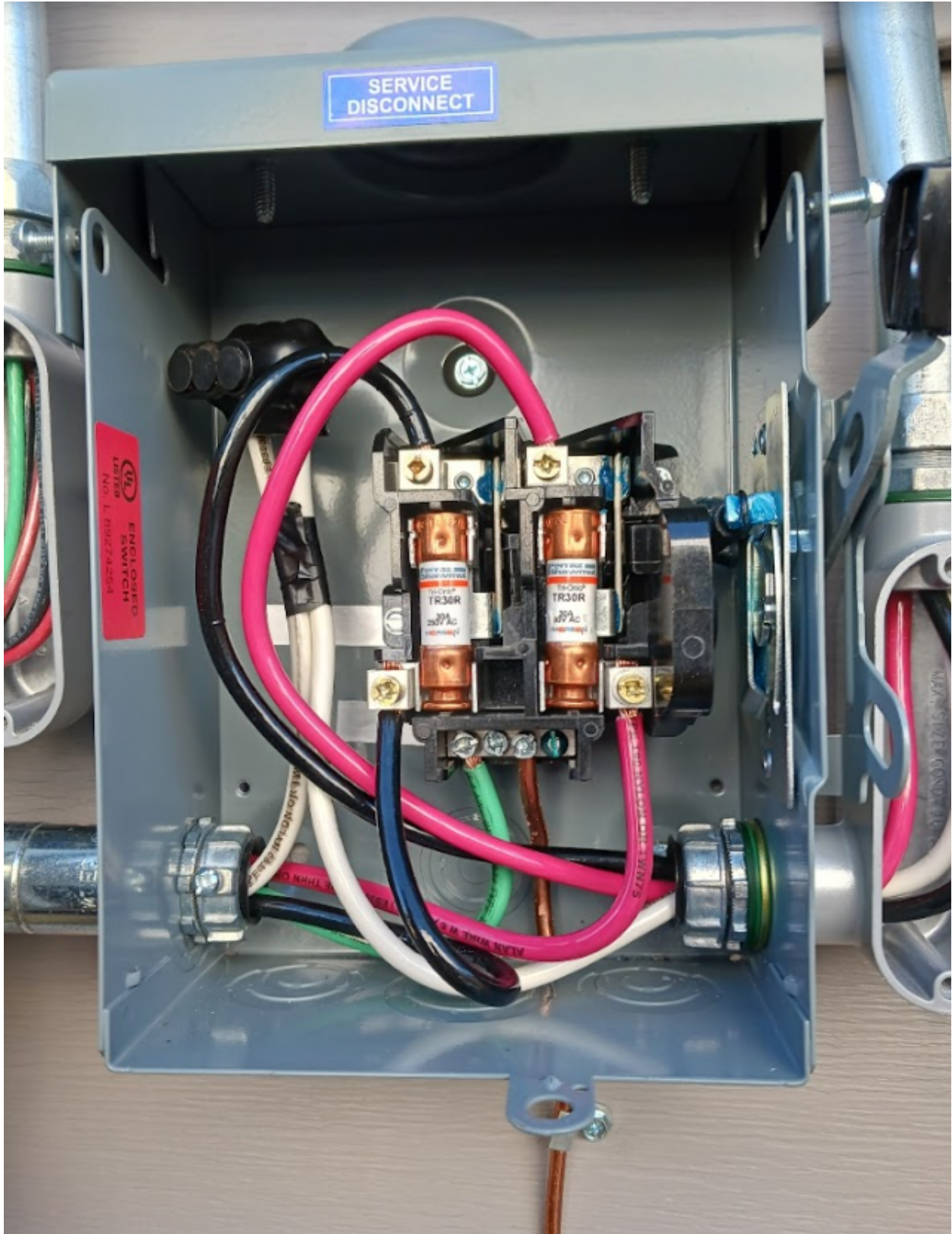
**WARNING**  
HAZARD OF ELECTRICAL SHOCK TO PERSONS. DO NOT BREAK SEAL CONTACT WITH IT FOR SERVICE

RIGID PVC ELECTRICAL CONDUIT 1/2" ID 3/4" O.D.













**⚠ WARNING**  
**ELECTRICAL SHOCK HAZARD**  
 TERMINALS ON THE LINE AND  
 LOAD SIDES MAY BE ENERGIZED  
 IN THE OPEN POSITION

596-03942

**SOLADECK**  
 www.rstcenterprises.com  
 Photovoltaic Combiner/Enclosure Conforms to UL 1741, Certified to CSA C22.2 No. 290, Solar Type III

01  02  03  04  21  22  23  24

0799 Series  0766-41A0

Max Ratings: 600 VDC/115 AMPS; 240 VAC/60 AMPS, Short circuit 10KA, Ambient Temp 75C\*

	<p><b>⚠ WARNING</b></p> <p>HIGH VOLTAGE, KEEP OUT!        RISK OF ELECTRICAL SHOCK. ONLY TRAINED SERVICE PERSONNEL SHOULD ACCESS. SUITABLE FOR PHOTOVOLTAIC USE. APPROVED FOR USE WITH SOLAR-PANELS AND INVERTERS USED FOR AN ALTERNATE PURPOSES OF 60V AC. ELECTRICAL SAFETY CIRCUIT BREAKING REQUIREMENTS SHALL BE PROVIDED WHEN REQUIRED BY THE CANADIAN ELECTRICAL CODE, PART I.</p> <p>CAUTION: BEFORE SERVICING, DISCONNECT ALL PHOTOVOLTAIC INPUT AND OUTPUT CIRCUITS. ALWAYS WEAR YOUR LINE CIRCUIT. SEE DIAGRAM PLATE COMPLY PAGE 5 OF INSTALLATION MANUAL COMPONENT AND BY PARTS.</p>	<p><b>⚠ AVERTISSEMENT</b></p> <p>HAUTS TENSIONS, GARDEZ VOUS EN ÉLOIGNEMENT. SEUL LE PERSONNEL QUALIFIÉ PEUT ACCÉDER À L'ÉQUIPEMENT. L'ÉQUIPEMENT EST APPROUVÉ POUR L'UTILISATION PHOTOVOLTAÏQUE. APPROUVÉ POUR L'UTILISATION ALTERNATIVE À DES FINS PHOTOVOLTAÏQUES DE 60V CA. LES CIRCUITS DE PROTECTION DES CIRCUITS DE SÉCURITÉ À BRÉCHER EN CAS D'UNE URGENCE DOIVENT ÊTRE FOURNIS EN CONFORMITÉ AVEC LE CODE CANADIEN DE L'ÉLECTRICITÉ (C.C.E.), PART I.</p> <p>ATTENTION: AVANT DE RÉPARER, DÉBRANCHER TOUS LES CIRCUITS PHOTOVOLTAÏQUES D'ENTRÉE ET DE SORTIE. TOUJOURS PORTER VOS ÉQUIPEMENTS DE PROTECTION PERSONNELLE. VOUS DEVREZ TOUJOURS PORTER VOS ÉQUIPEMENTS DE PROTECTION PERSONNELLE EN CAS D'URGENCE. VOUS DEVEZ TOUJOURS PORTER VOS ÉQUIPEMENTS DE PROTECTION PERSONNELLE EN CAS D'URGENCE.</p>
--	-----------------------------------------------------------------------------------------------------------------------------------------------------------------------------------------------------------------------------------------------------------------------------------------------------------------------------------------------------------------------------------------------------------------------------------------------------------------------------------------------------------------------------------------------------------------------------------------------------	----------------------------------------------------------------------------------------------------------------------------------------------------------------------------------------------------------------------------------------------------------------------------------------------------------------------------------------------------------------------------------------------------------------------------------------------------------------------------------------------------------------------------------------------------------------------------------------------------------------------------------------------------------------------------------------------------------------------------------------------------------------------------------------------------------------------

R.S.T.C. Enterprises  
 Patent No. US 7,626,118 B1



**IRONRIDGE**

Make Solar **Stronger.**

**FF2-01-B2 Rev B**



**FLASHFOOT2, BLACK**

**Unit Qty = 20**

IR-Patents.com

1022.0311

⚠️ **WARNING:** This product may contain chemicals that are known to the State of California to cause cancer, birth defects, or other reproductive harm. For more information go to [www.P65Warnings.ca.gov](http://www.P65Warnings.ca.gov).