

TO REMOVE INTER  
Screw & Banding Screw of as  
TO REPLACE. Snap into Pos



4056508750

Allowing petroleum based  
paint, solvents or spray to  
contact the non-metallic parts  
of this product may adversely  
affect user safety and impact  
reliability.

Al permite  
múltiples  
entron en  
plumón, so  
basados e  
petróleo  
del u  
confi

This equipment is designed  
and tested by Square D to  
performance levels which  
exceed Underwriters  
Institute

Esta eq  
y proba  
depara  
recom

ISSUE NO. HACH TYPE  
DP-4075 TIPO CARR



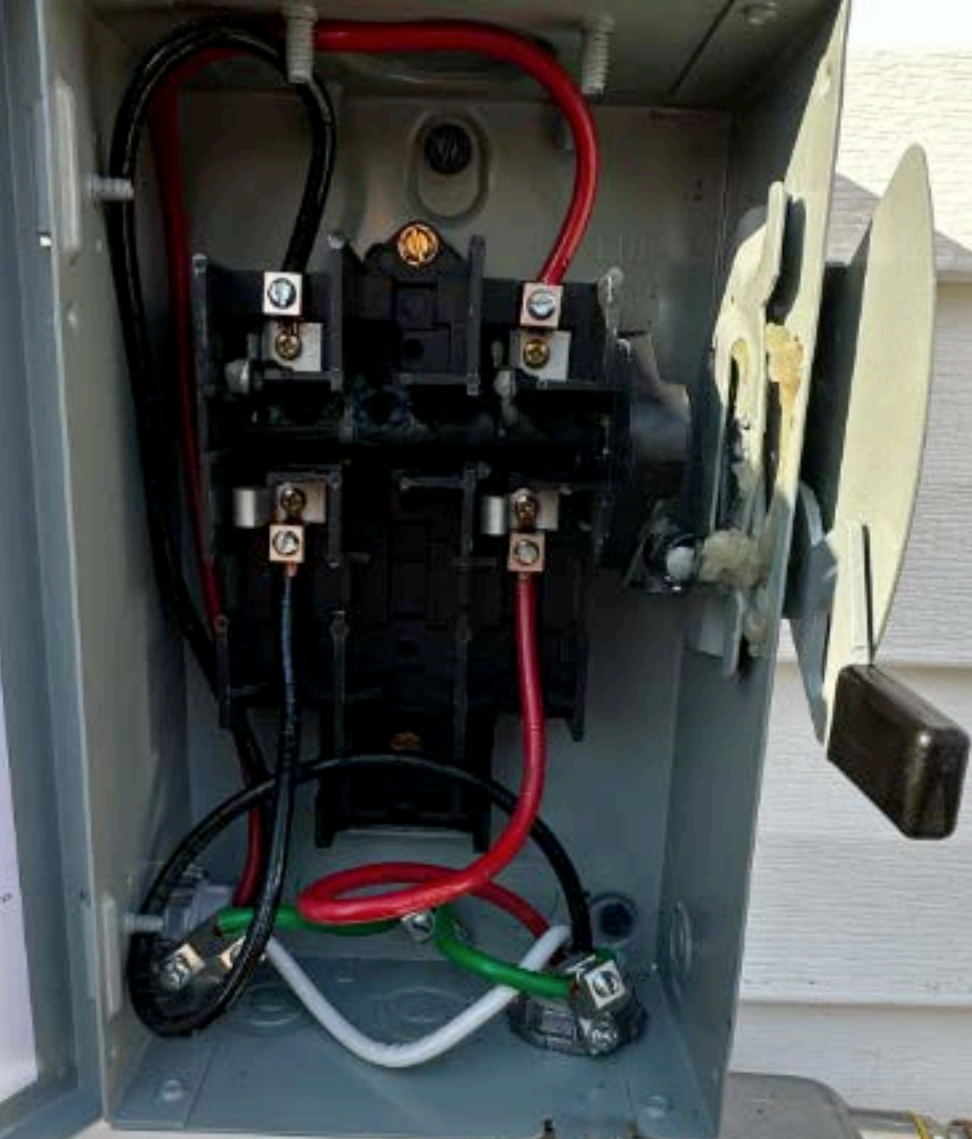


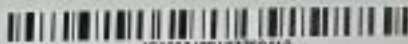
DANGER

CAUTION: THE FOLLOWING INFORMATION IS FOR THE USER'S INFORMATION ONLY. IT IS NOT TO BE USED AS A BASIS FOR ANY OTHER ACTION. THE USER SHOULD CONSULT THE MANUFACTURER'S LITERATURE FOR THE COMPLETE LIST OF WARNINGS AND PRECAUTIONS. THE USER SHOULD ALWAYS USE THE APPROPRIATE SAFETY PRECAUTIONS WHEN WORKING WITH ELECTRICAL EQUIPMENT.



For the information of the user, the following information is provided. This information is not intended to be used as a basis for any other action. The user should consult the manufacturer's literature for the complete list of warnings and precautions. The user should always use the appropriate safety precautions when working with electrical equipment.





358322405107702418

We aim for a greener tomorrow with complete high energy solutions

**Q.PEAK DUO BLK ML-G10+ 400****PERFORMANCE AT STANDARD TEST CONDITIONS\***

Rated Power <sup>†</sup> (maximum)	$P_{max}$	[W]	400
Short circuit current <sup>†</sup>	$I_{sc}$	[A]	11.14
Open circuit voltage <sup>†</sup>	$V_{oc}$	[V]	45.3
Current at maximum power	$I_{mp}$	[A]	10.77
Voltage at maximum power	$V_{mp}$	[V]	37.13
Maximum system voltage	$V_{sys}$	[V]	1000 (IEC) 1000 (UL)
Weight	M	[kg/lbs]	22.6 / 49.9

\* Measurement is taken at  $T_{cell} = 25 \pm 0.5^\circ C$  for  $P_{max}$ ,  $I_{sc}$  &  $V_{oc}$  at STC, 1000 W/m<sup>2</sup>, 25  $\pm$  0.5  $^\circ C$ , AM 1.5 and 1.5 m/s wind speed. Data given are typical (averaged) values.  
IEC 61215, IEC 61730, UL 1741



358322405107702418

Qcells (Malaysia) Sdn. Bhd.  
Lot 1, Jalan U-5, Kawasan Cyber Valley,  
40150 Cyberjaya, Selangor Darul Ehsan, Malaysia  
Certificate of Approval: Qcells (Malaysia) Sdn. Bhd.  
Company No. 1016276-M

Qcells (Germany) GmbH, Sonnenallee 17-21, D-10178 Berlin, Germany

**qcells**

Made in Malaysia



**DANGER!**  
Risk of electric shock.  
DO NOT connect or disconnect  
any conductive system in  
a live loop circuit. Refer to the  
installation and operation manual  
before handling, servicing or  
reworking the unit.

**DANGER!**  
Replace the sheet electrode!  
If P10 conductive material  
leakage or connection failure  
is detected, stop the charge  
controller to prevent electric shock  
at the time of a short-circuit  
situation at installation or product.

Fire Rating: Class C / Type 2  
Flame Rating: 30A

U.S. Patent No. 5,993,215  
©2012 Qcells

EMAS [www.qcells.com](http://www.qcells.com)  
WSN [www.qcells.com](http://www.qcells.com)







**⚠ WARNING**

THE DISCONNECTION OF THE  
GROUNDED CONDUCTOR(S)  
MAY RESULT IN OVERVOLTAGE  
ON THE EQUIPMENT

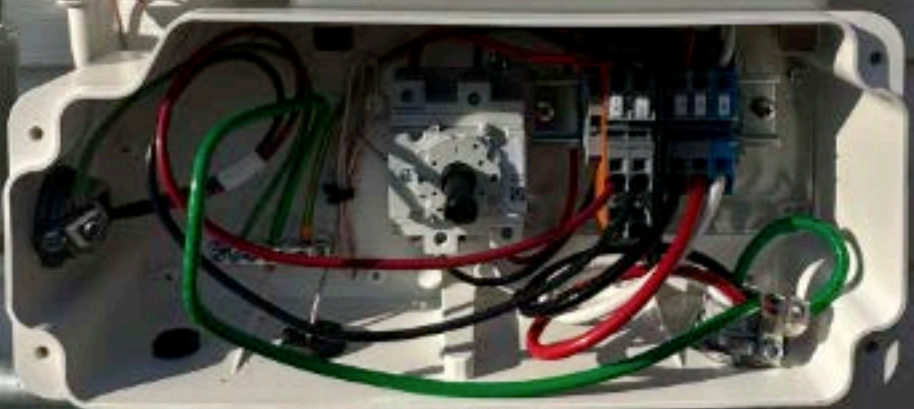
**⚠ WARNING**

ELECTRIC SHOCK HAZARD  
TERMINALS ON THE LINE AND  
LOAD SIDES MAY BE ENERGIZED  
IN THE OPEN POSITION

**RAPID SHUTDOWN  
SWITCH FOR  
SOLAR PV SYSTEM**

solar**edge**

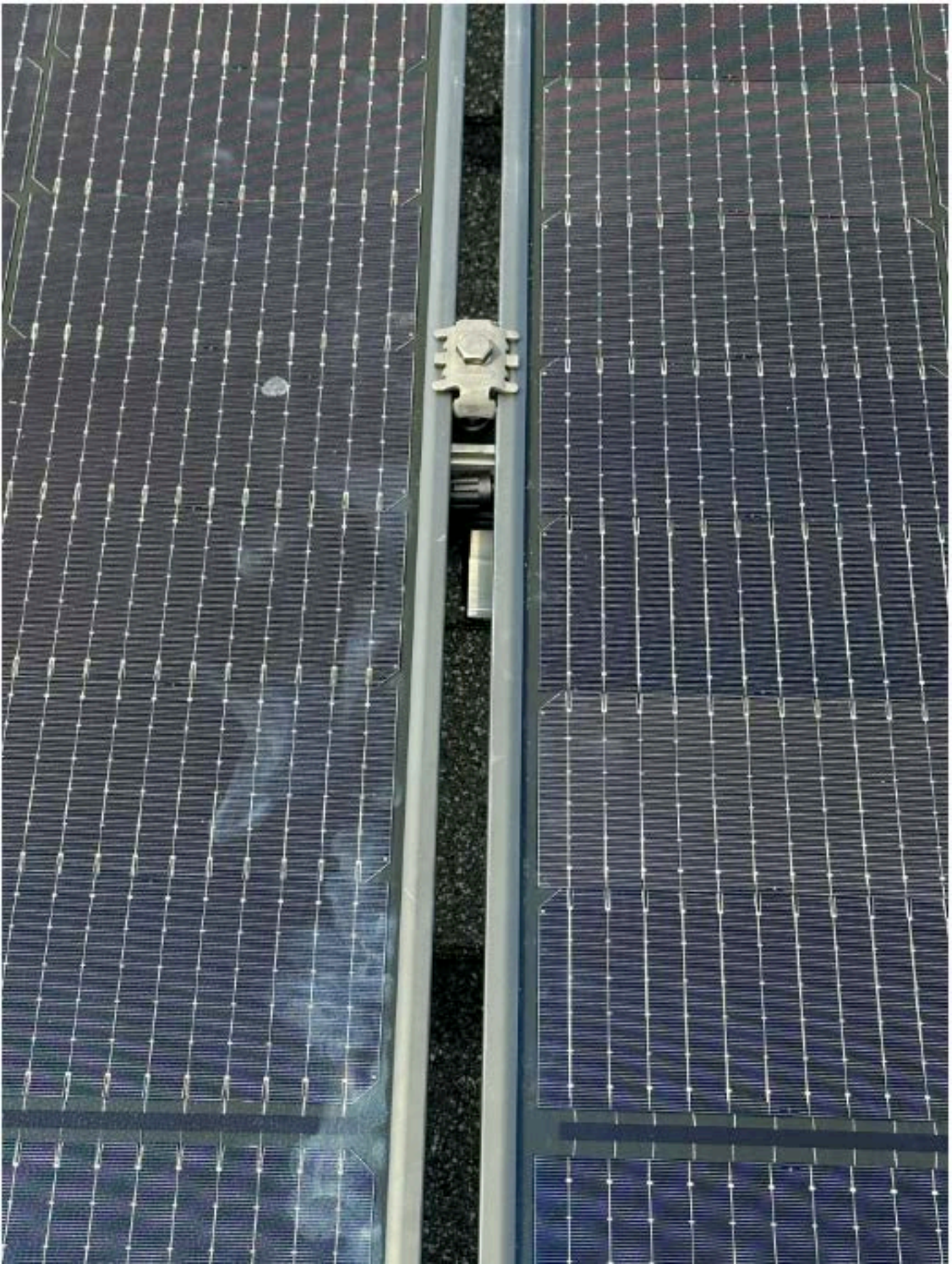
**HD** wave



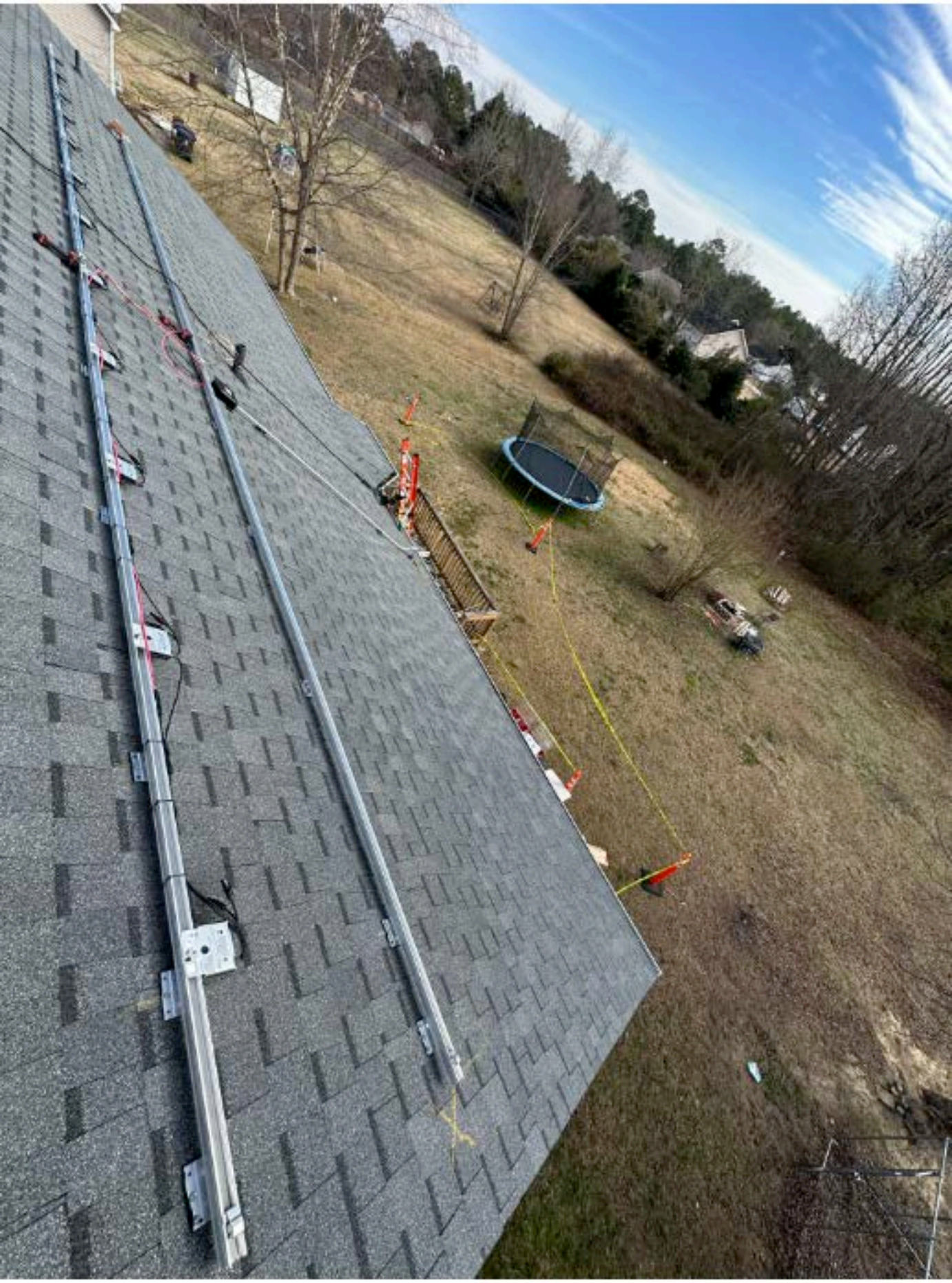


















**WARNING**  
THE DISCONNECTION OF THE  
GROUNDED CONDUCTOR(S)  
MAY RESULT IN OVERVOLTAGE  
ON THE EQUIPMENT

**WARNING**  
ELECTRIC SHOCK HAZARD  
TERMINALS ON THE LINE AND  
LOAD SIDES MAY BE ENERGIZED  
IN THE OPEN POSITION

**RAPID SHUTDOWN  
SWITCH FOR  
SOLAR PV SYSTEM**

solar**edge**

**HD** wave

**WARNING**  
ELECTRIC SHOCK HAZARD  
THE DC CONDUCTORS OF THIS  
PHOTOVOLTIC SYSTEM  
ARE UNGROUNDED AND MAY  
BE ENERGIZED

OFF **ON**

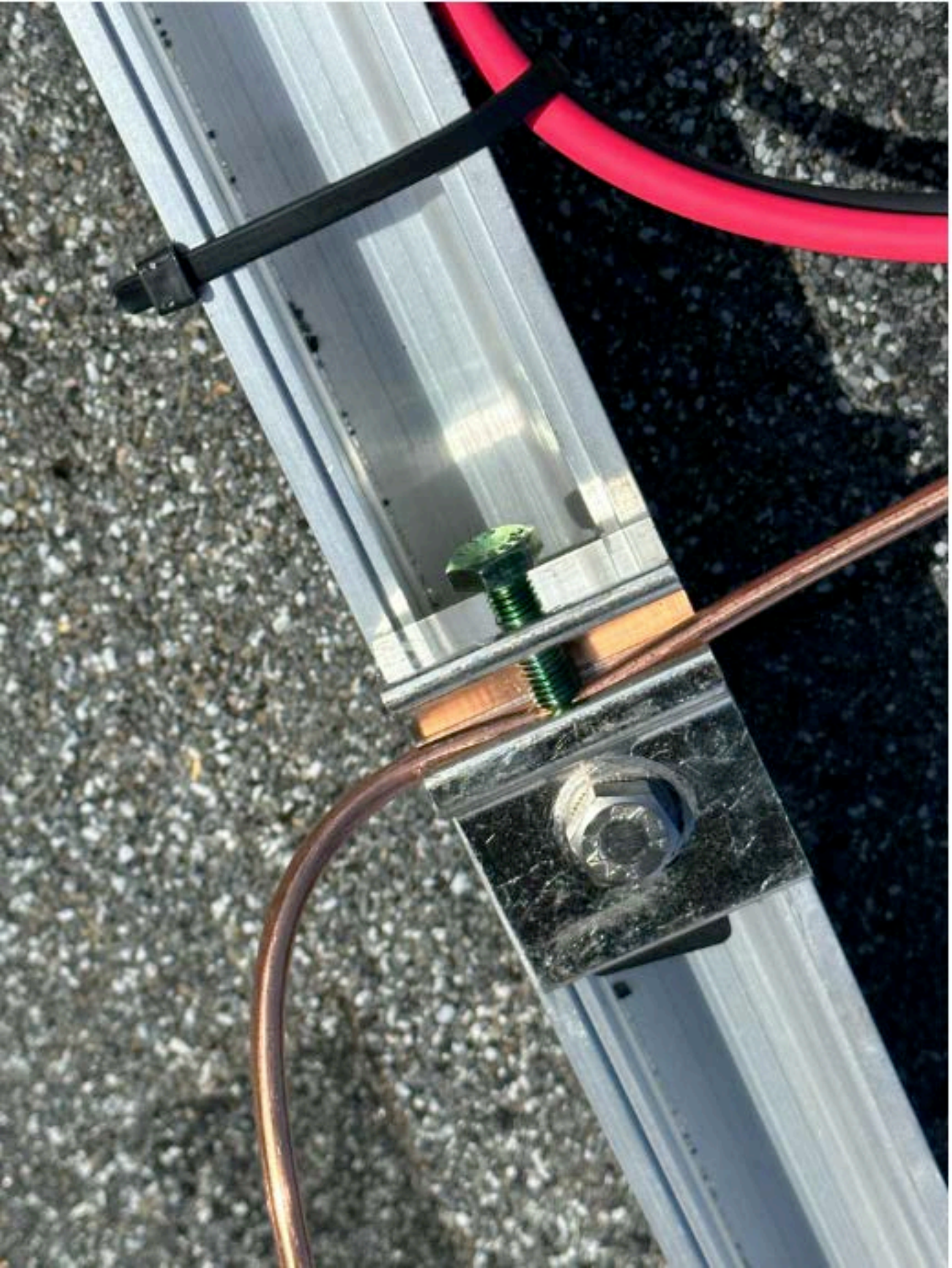
MAXIMUM VOLTAGE **600Vdc**  
MAXIMUM CIRCUIT CURRENT **150Aac**  
MAX. RATED OUTPUT CURRENT **150Aac**  
(WITH CHARGE CONTROLLER OR  
DC TO DC CONVERTER IF INSTALLED)

solar**edge**





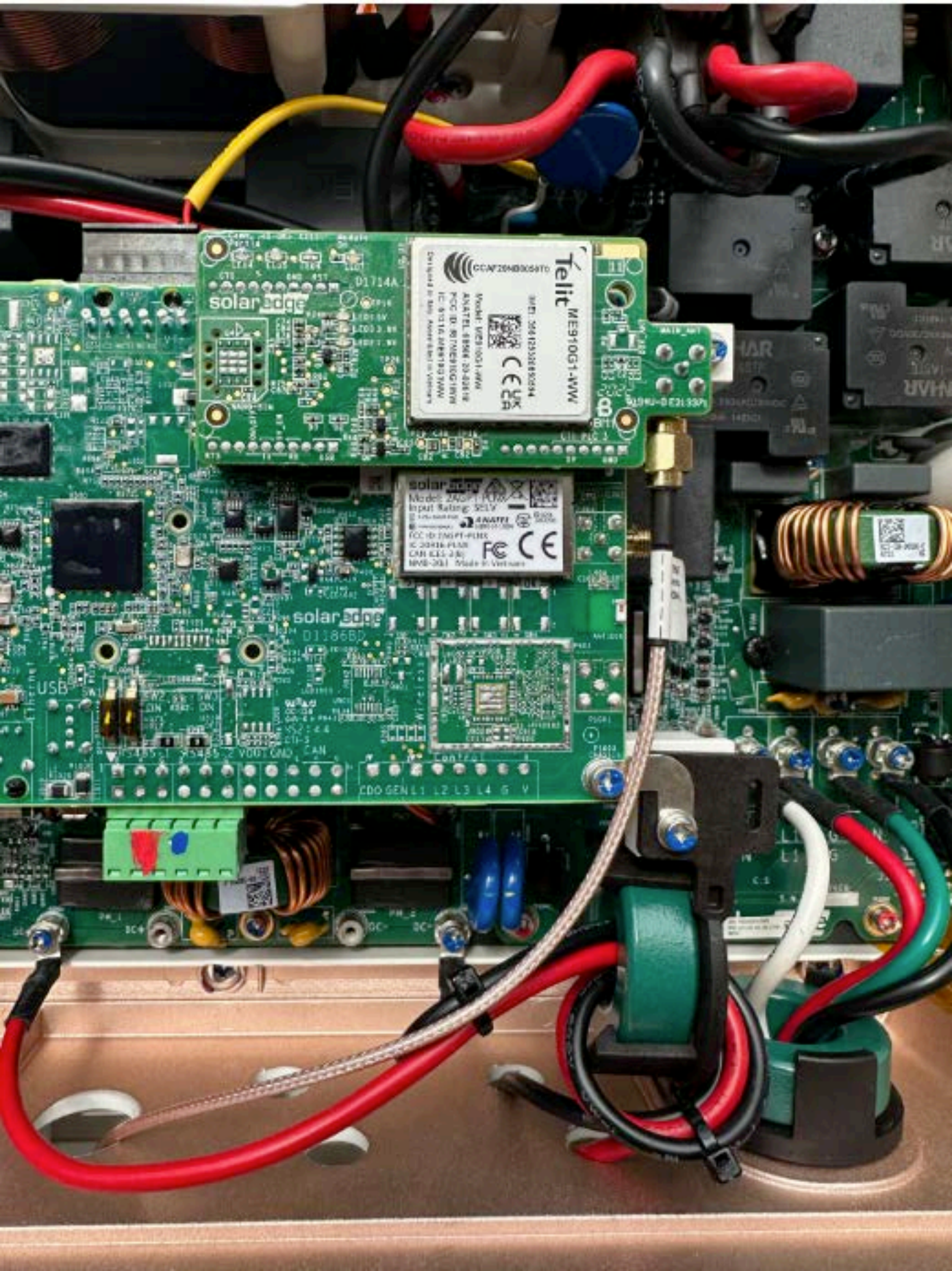












solar edge  
D11714A

Teitit  
ME910G1-1WV  
Model: ME910G1-1WV  
ANATEL: 8984-20-0218  
IC: 9310-048193-1WV  
Original in Viet Nam, Approved in Vietnam  
SMT: 20412030880094  
CE  
FCC

solar edge  
Model: D1186B0  
Input Rating: 24V  
ANATEL: 8984-20-0218  
IC: 9310-048193-1WV  
CAR EEC: 230  
MVB-2011 Made in Vietnam  
FCC  
CE

solar edge  
D1186B0

USB

CDO GEN L1 L2 L3 L4 L5 V

IC4  
IC5  
IC6  
IC7  
IC8  
IC9  
IC10  
IC11  
IC12  
IC13  
IC14  
IC15  
IC16  
IC17  
IC18  
IC19  
IC20  
IC21  
IC22  
IC23  
IC24  
IC25  
IC26  
IC27  
IC28  
IC29  
IC30  
IC31  
IC32  
IC33  
IC34  
IC35  
IC36  
IC37  
IC38  
IC39  
IC40  
IC41  
IC42  
IC43  
IC44  
IC45  
IC46  
IC47  
IC48  
IC49  
IC50  
IC51  
IC52  
IC53  
IC54  
IC55  
IC56  
IC57  
IC58  
IC59  
IC60  
IC61  
IC62  
IC63  
IC64  
IC65  
IC66  
IC67  
IC68  
IC69  
IC70  
IC71  
IC72  
IC73  
IC74  
IC75  
IC76  
IC77  
IC78  
IC79  
IC80  
IC81  
IC82  
IC83  
IC84  
IC85  
IC86  
IC87  
IC88  
IC89  
IC90  
IC91  
IC92  
IC93  
IC94  
IC95  
IC96  
IC97  
IC98  
IC99  
IC100





**LISTED**  
By UL Listing System  
E467724

Everest Solar Systems, LLC

RailConn CR 44-X, Struct Set, M11

DCD Protection Rating 30 AMP

Conforms to ANSI/UL 2703

03/22/22





DC Output:  
AC Input:  
Output Current Voltage

340W/5-60V/3.5A  
8-48V/1.1A  
1V  
MADE IN CHINA





2x10000VDC POWER SOURCE  
DYNABEN  
K01-10000VDC-20



**EAT·N**

General Duty Safety Switch  
Interrupteur de sécurité à usage général  
Interruptor de seguridad de servicio general

30 A, 240 V~, 50 Hz

Complete ratings inside  
Véase en el interior las capacidades  
Información completa de capacidades en el interior

Further instructions inside  
Autres instructions à l'intérieur  
Instrucciones adicionales en el interior

Made in U.S.A. / Fabriqué aux E.-U. / Hecho en E.U.A.

**⚠ DANGER**  
HACERSE DUEÑO DE VIDA. EVITE LES CHOCES ELECTRIQUES. RIESGO DE LESIONES.  
• Never operate switch with cover open.  
• Never use power switch as a switch for other equipment with cover removed or open. Use cover when using switch.  
• Evitez les chocs électriques. Prévenez les blessures.  
• Ne pas utiliser l'interrupteur sans sa protection.  
• Ne pas utiliser l'interrupteur pour d'autres équipements avec la protection retirée ou ouverte. Utilisez la protection quand vous utilisez l'interrupteur.  
**⚠ PELIGRO**  
CONTRA EL RIESGO DE LESIONES CAUSADAS POR LA ELECTRICIDAD.  
• Nunca opere el interruptor con la cubierta abierta.  
• Nunca use el interruptor como interruptor de otros equipos con la cubierta retirada o abierta. Utilice la cubierta cuando use el interruptor.

**AC DISCONNECT**  
**PHOTOVOLTAIC SYSTEM**  
**POWER SOURCE**

RATED AC OUTPUT CURRENT **16 AC AMP**  
NOMINAL OPERATING AC VOLTAGE **240 V**

AC JUNCTION BOX

**⚠ WARNING**

**ELECTRIC SHOCK HAZARD**

DO NOT TOUCH TERMINALS ON BOTH THE LINE AND LOAD SIDES MAY BE ENERGIZED IN THE OPEN POSITION

CAUTION SOLAR CIRCUIT

**AC DISCONNECT**

**PV SYSTEM DISCONNECT**



**WARNING**

**ELECTRIC SHOCK HAZARD**  
**TERMINALS ON THE LINE**  
**AND LOAD SIDES**  
**MAY BE ENERGIZED**  
**IN THE OPEN POSITION**





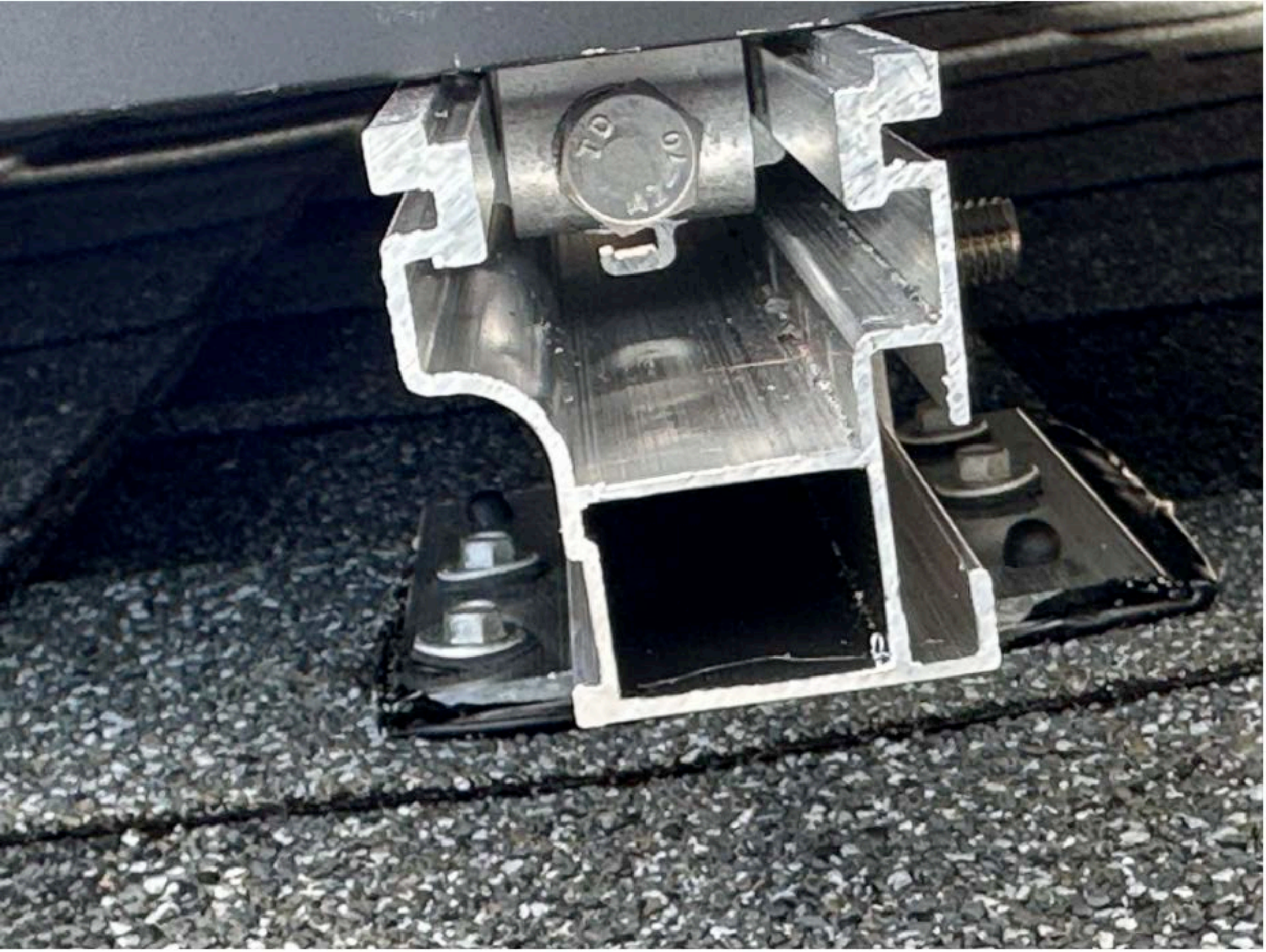
DC JUNCTION BOX  
**WARNING**  
ELECTRIC SHOCK HAZARD  
DO NOT DISCONNECT  
UNDER LOAD  
PHOTOVOLTIC  
POWER SOURCE

PHOTOV











405107702432

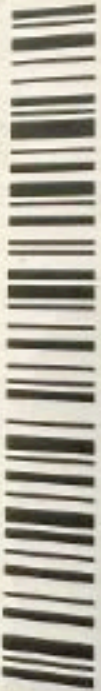








358322405107702416



358322405107702416



