

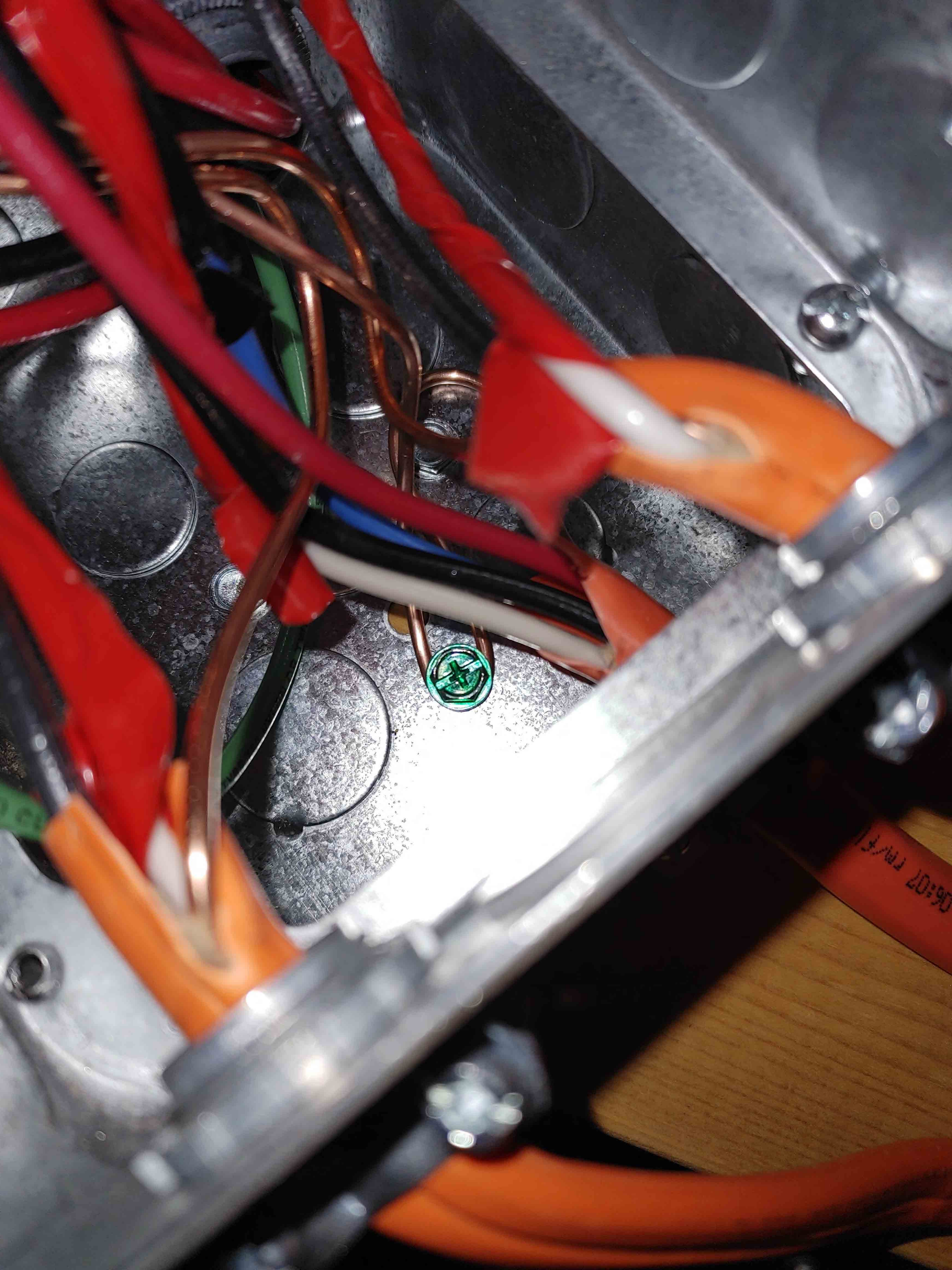


1
1
1

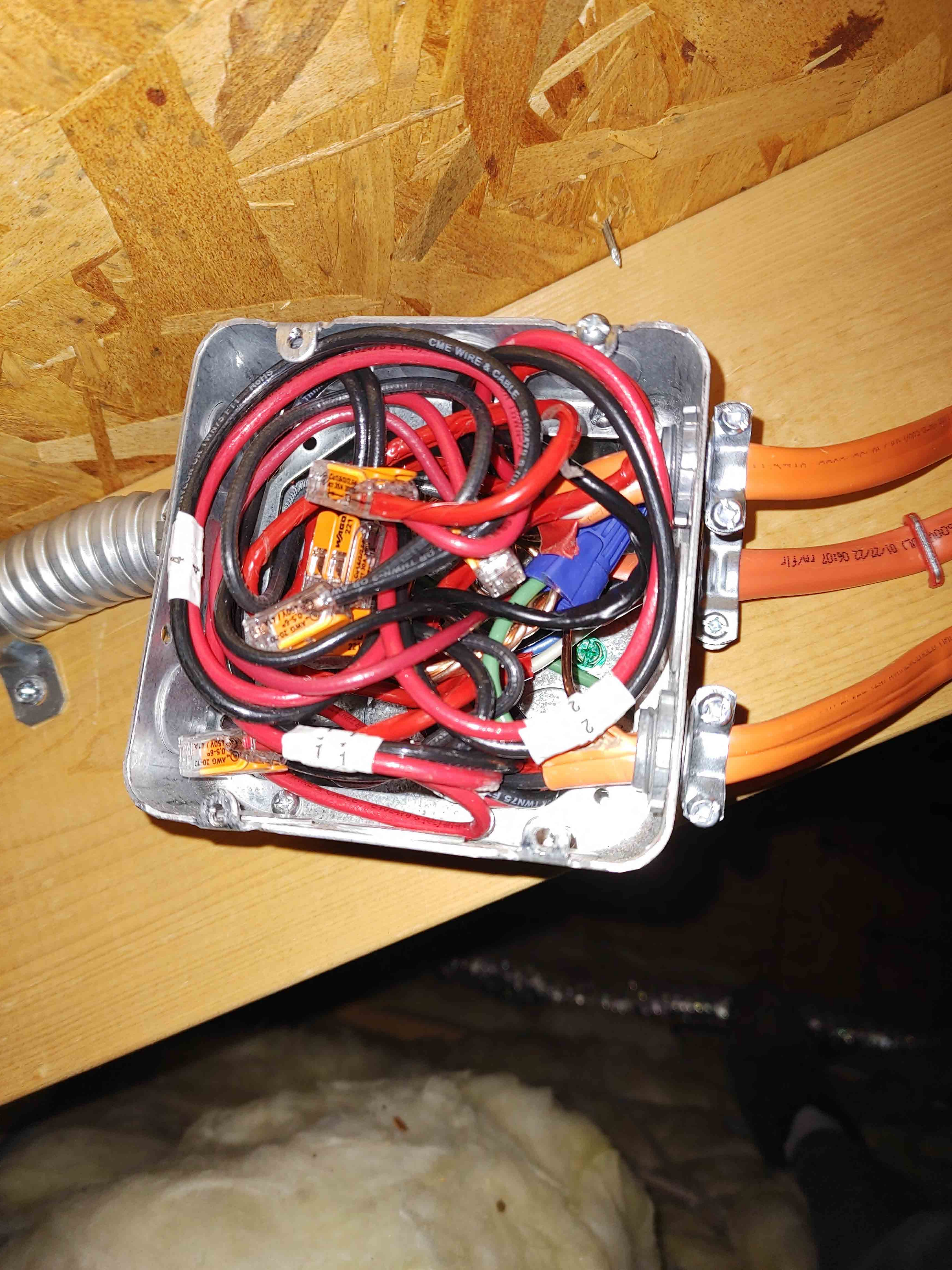
OR THWN-2 O

11/12/12 06:07 rev/1r
11/12/12 06:07 rev/1r
11/12/12 06:07 rev/1r

Colson



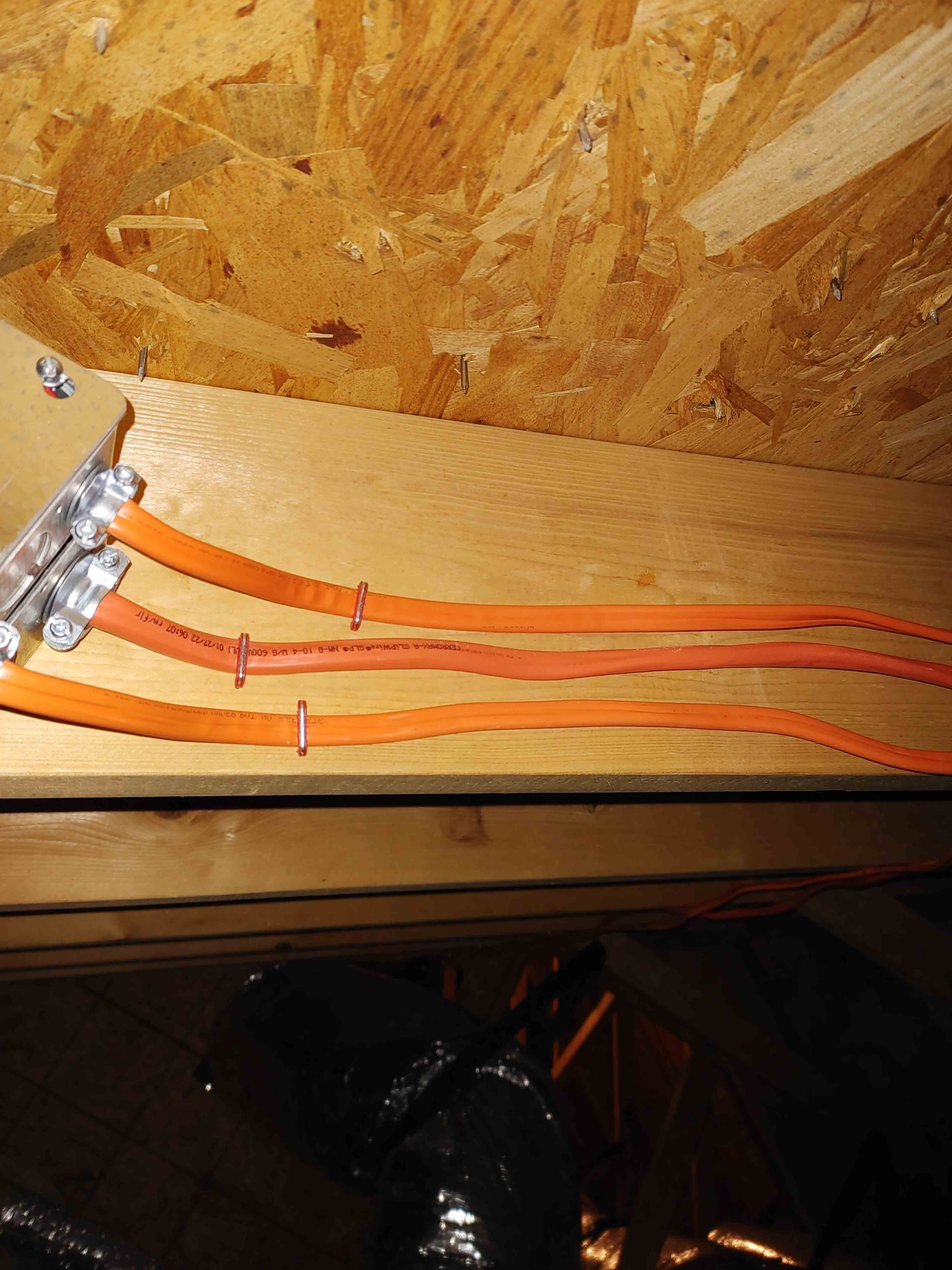
13/10/20 20:50











FE3000V-A CLPWRV-SLPE NM-B 10-4 U/B 6000V (L) 01/22/22 06:07 R/Fir

FE3000V-A CLPWRV-SLPE NM-B 10-4 U/B 6000V (L) 01/22/22 06:07 R/Fir



A2008

... MANUFACTURED UNDER PAT. ...

MADE IN USA
1ST OMER SUPPORT
DO-648-6893
STRENGTH AXIS
DIRECTION







JUNE

18

LVL

BUILDING PRODUCTS
ROXBORO, NC

APA

THE ENGINEERED
WOOD ASSOCIATION

RATED SHEATH

24/16

SIZED TO

3/4" EXPOSED

24/16
SIZED TO
3/4" EXPOSED
SHEATHING
PER ICC-ES ESR-1100
FOR INFORMATION

1/8 INCH AT ENDS
1/8 INCH AT EDGES
THIS SIDE DOWN
ESTE LADO ABAJO
CE CÔTÉ EN DESSOUS

LENGTH AXIS
VS. DIRECTION

LP CUSTOMER SUPPORT
1-800-648-8893
MADE IN USA

2008

18 18

LP
BUILDING PRODUCTS
ROXBORO, NC
APA
THE ENGINEERED
WOOD ASSOCIATION
RATED SHEATHING
24/16 7/8 INCH
SIZED FOR SPACING
EXPOSURE-1
150
2-04 SHEATHING
POP-1011ED-104-10

STRENGTH
THIS DIRECTION
LP CUSTOMER SUPPORT
1-800-648-8893
MADE IN USA

2008

LP
BUILDING PRODUCTS
ROXBORO, NC



MADE IN USA
1-800-648-8893
FOR CUSTOMER SUPPORT
CALL THIS NUMBER
FOR THIS PRODUCT
CEILING JOISTS
OSB SHEATHING

1

2

3

3.5755876
MANUFACTURED UNDER PAT. NO. 8,658,576

MADE IN USA
1-800-648-8893
FOR CUSTOMER SUPPORT
CALL THIS NUMBER
FOR THIS PRODUCT
CEILING JOISTS
OSB SHEATHING
THIS SIDE DOWN
ESTE LADO ABAJO
DIRECTION AXIS
DIRECCION EJE
1/8 INCH AT ENDS
1/8 INCH AT EDGES
20-74
PRODUCT SU
PANELS
WITH
AS
252



BUILDING
RO...

TH...
WO...

RA...



W





UL[®]
CERTIFIED
SAFETY US
E486079









IQ7A

Grid Support Interactive Inverter

Power Factor Range: +/- 0.85

DC Input range: 18 - 58 V

Max. input short-circuit current: 15 A

Max. input continuous current: 10.2 A

AC output voltages: 208 / 240 V

AC output currents: 1.39 / 1.45 A

AC output frequency: 60 Hz

AC output power (peak): 295 / 366 VA

AC output power (max. continuous): 290 / 349 VA

Operating temperature: -40 °C to +60 °C

Ingress protection: NEMA Type 6

Photovoltaic Rapid Shutdown Equipment

NEC 690.12 and C22.1-2015 Rule 64-218

UL1741 SA Compliant | Assembled in Mexico



This device complies with part 15 of the FCC Rules. Operation is subject to the following two conditions: (1) This device may not cause harmful interference. (2) This device must accept any interference received, including interference that may cause undesired operation.



CAUTION: RISK OF SHOCK. WARRANTY VOID IF COVER REMOVED. NO USER SERVICEABLE PARTS INSIDE. REFER SERVICING TO QUALIFIED SERVICE PERSONNEL.

WARNING: ELECTRIC SHOCK HAZARD. DC CONDUCTORS OF THIS PHOTOVOLTAIC SYSTEM ARE UNGROUNDDED AND MAY BE ENERGIZED. AC AND DC VOLTAGE SOURCES TERMINATE INSIDE THIS EQUIPMENT. DISCONNECT BOTH BEFORE SERVICING. PHOTOVOLTAIC ARRAY SUPPLIES A DC VOLTAGE TO THIS EQUIPMENT WHEN EXPOSED TO LIGHT. HOT SURFACES: TO REDUCE THE RISK OF BURNS - DO NOT TOUCH.

ATTENTION: RISQUE D'ELECTROCUTION. LES CONDUCTEURS CC DE CE SYSTEME PHOTOVOLTAIQUE NE SONT PAS RELIES A LA TERRE ET PEUVENT ETRE SOUS TENSION. DES SOURCES DE TENSION CA ET CC SONT CONNECTEES A CET APPAREIL. ISOLER LES DEUX SOURCES AVANT TOUTE INTERVENTION. LES CABLES COURRANT CONTINU SONT SOUS TENSION LORSQUE LE CHAMP PHOTOVOLTAIQUE EST EXPOSE A LA LUMIERE. RISQUE DE BRULURE. NE PAS TOUCHER.