

**Trinasolar**  
L01220200626576

**Trinasolar**  
TSM-390DE09.05



Maximum Power	(P <sub>max</sub> )	390W *
Maximum Power Voltage	(V <sub>mp</sub> )	33.8V
Maximum Power Current	(I <sub>mp</sub> )	11.54A
Open Circuit Voltage	(V <sub>oc</sub> )	40.8V *
Short Circuit Current	(I <sub>sc</sub> )	12.14A *
Maximum Series Fuse		20A
Power Selection		0 - +5W
Module Application		Class A
Maximum System Voltage		REC1500VUL190V

\*Considering LID, the power range of the certification authority, tolerance (P<sub>max</sub> ±3%, V<sub>oc</sub> ±3%, I<sub>sc</sub> ±4%)  
Electrical Rating at STC AM1.5 (RRAD) 1000W/m<sup>2</sup> Temp. +25°C

For field connections, use minimum 4mm<sup>2</sup>(No. 12AWG)copper wires insulated for a minimum 90°C



**WARNING-ELECTRICAL HAZARD**

This module produces electricity when exposed to light. Follow all applicable electrical safety precautions.

- Module Fire resistance rating Class C (for CSA C22.2 No. 61730) and module fire performance Type 2 for UL61730
- System Fire Class Rating: See Installation Instructions for Installation Requirements to Achieve a Specified System Fire Rating with this Product/Classe nominale du système contre l'incendie: Voir les instructions d'installation.
- See module literature for appropriate mating connectors (Voir la documentation du module concernant les connecteurs appropriés)



UL LISTED  
ELECTRICAL EQUIPMENT  
CLASS A  
UL61730

www.trinasolar.com

Assembled in Vietnam

**ENPHASE.**

**IQ Combiner 4**

**Photovoltaic  
Combiner Box**

**X-IQ-AM1-240-4**



**Electrical ratings**

Voltage	240VAC, 60Hz
DG Breakers	80A MAX (combined)
DG Inputs	64A MAX (combined)
Output	55A MAX, 90A MAX feeder OCPD
Temperature	46°C MAX ambient

For DG breaker, use only Eaton BR series.

202240181884

S/N:

202240181884

P/N:

883-00356 20

**Dedicated solar and DG Combiner Box - do not add loads  
10 AMP or 15 AMP IQ Gateway Breaker not used for backfeed**

Connection	Wire sizes	Torque	
DG Breaker (1, 2, 3, 4)	14-10 AWG	2.2 Nm (20 lb-in)	
	8 AWG	2.8 Nm (25 lb-in)	
	6-4 AWG	3.0 Nm (27 lb-in)	
60A Circuit Breaker only	4-1/0 AWG	5.0 Nm (45 lb-in)	
IQ Gateway Breaker	14-10 AWG	2.26 Nm (20 lb-in)	
Neutral and ground	Large screw	2-1/0 AWG	5.6 Nm (45 lb-in)
		14-3 AWG	5.1 Nm (45 lb-in)
	Small screw	6 AWG	3.6 Nm (32 lb-in)
		8 AWG	2.6 Nm (23 lb-in)
		10-14 AWG	2.3 Nm (20 lb-in)
Main lug	10-4 AWG	5.0 Nm (45 lb-in)	
	3-2/0 AWG	5.6 Nm (50 lb-in)	

Copper conductors only, rated min. 75°C.  
Follow NFPA 70 (NEC), or CSA C22.1 part 1, and all local codes.

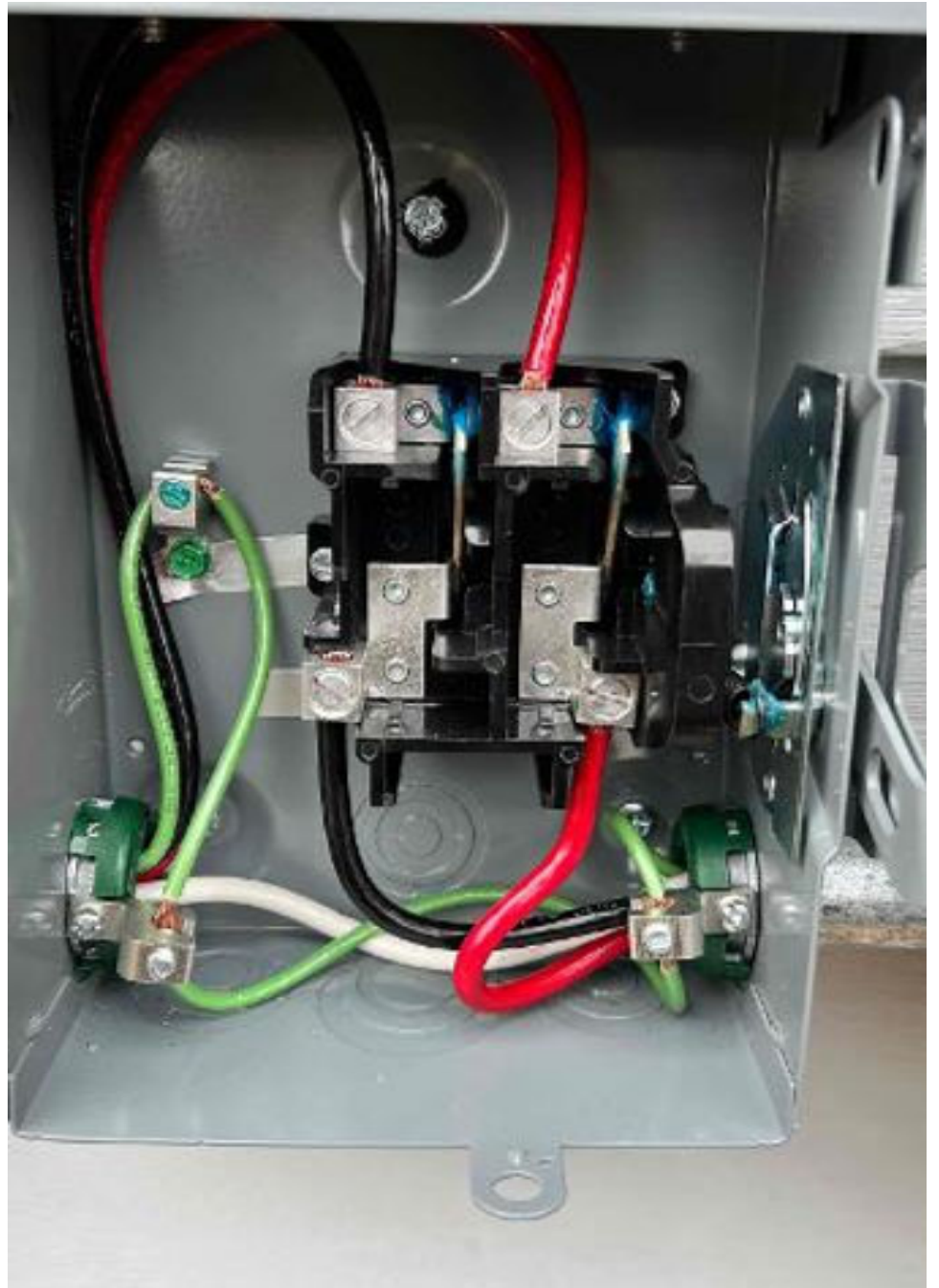
For DG Breakers larger than 20A, use wire insulated for 90°C.

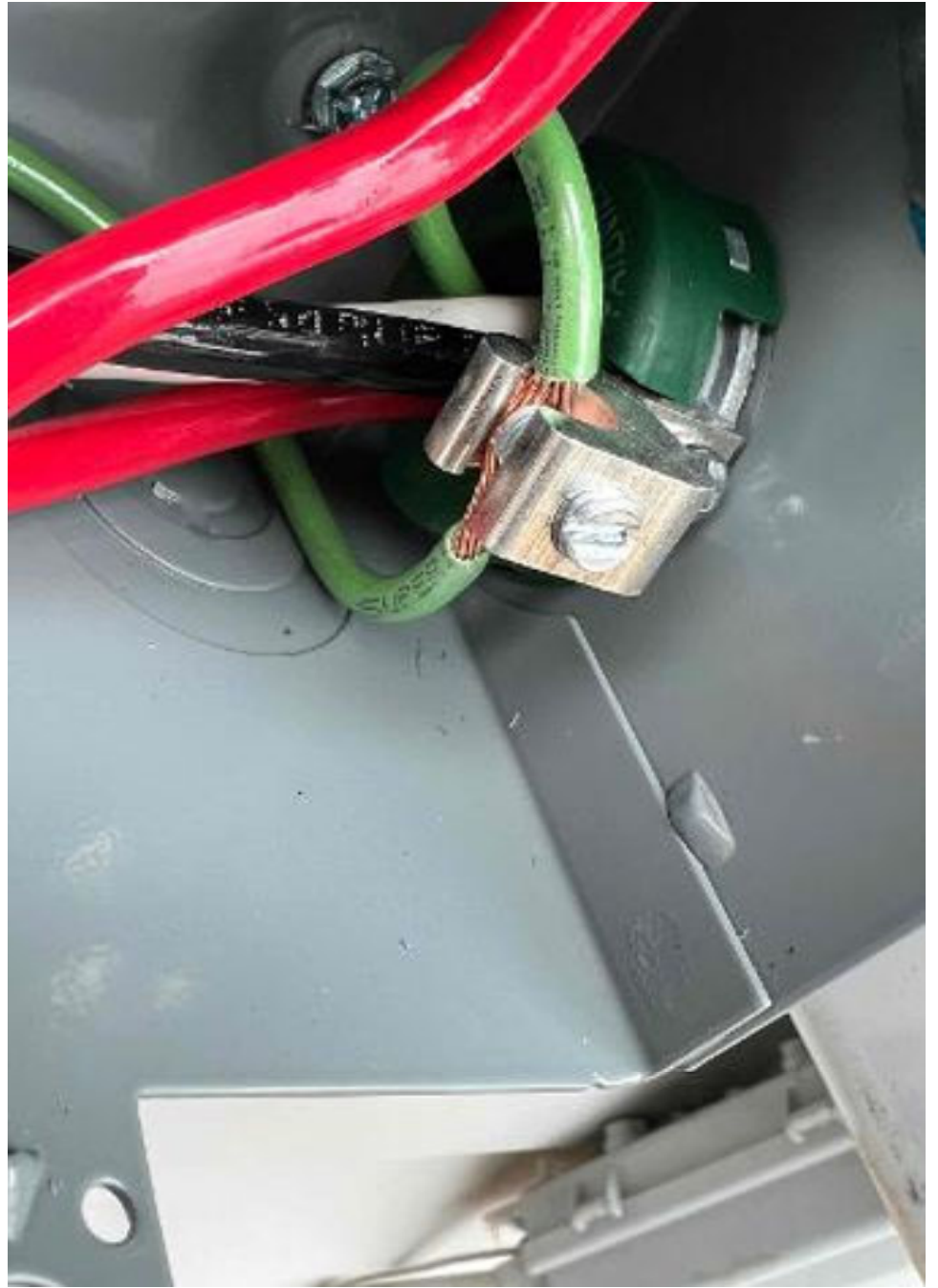
Handwritten signature in black ink, featuring a large, sweeping initial 'E' and a long, curved tail extending to the left.

Handwritten signature in black ink, featuring a large, sweeping initial 'M' and a long, curved tail extending to the right.

www

of



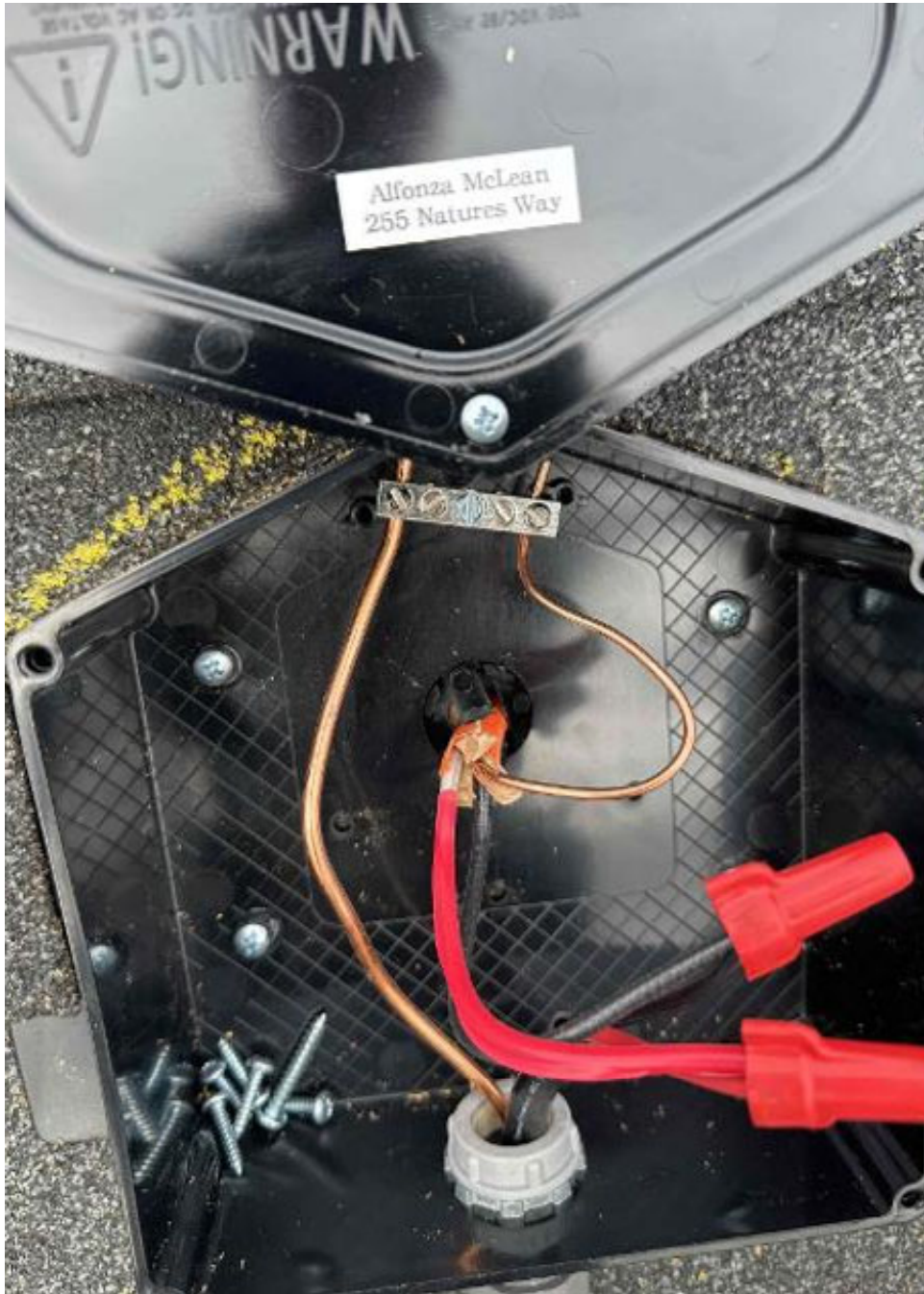




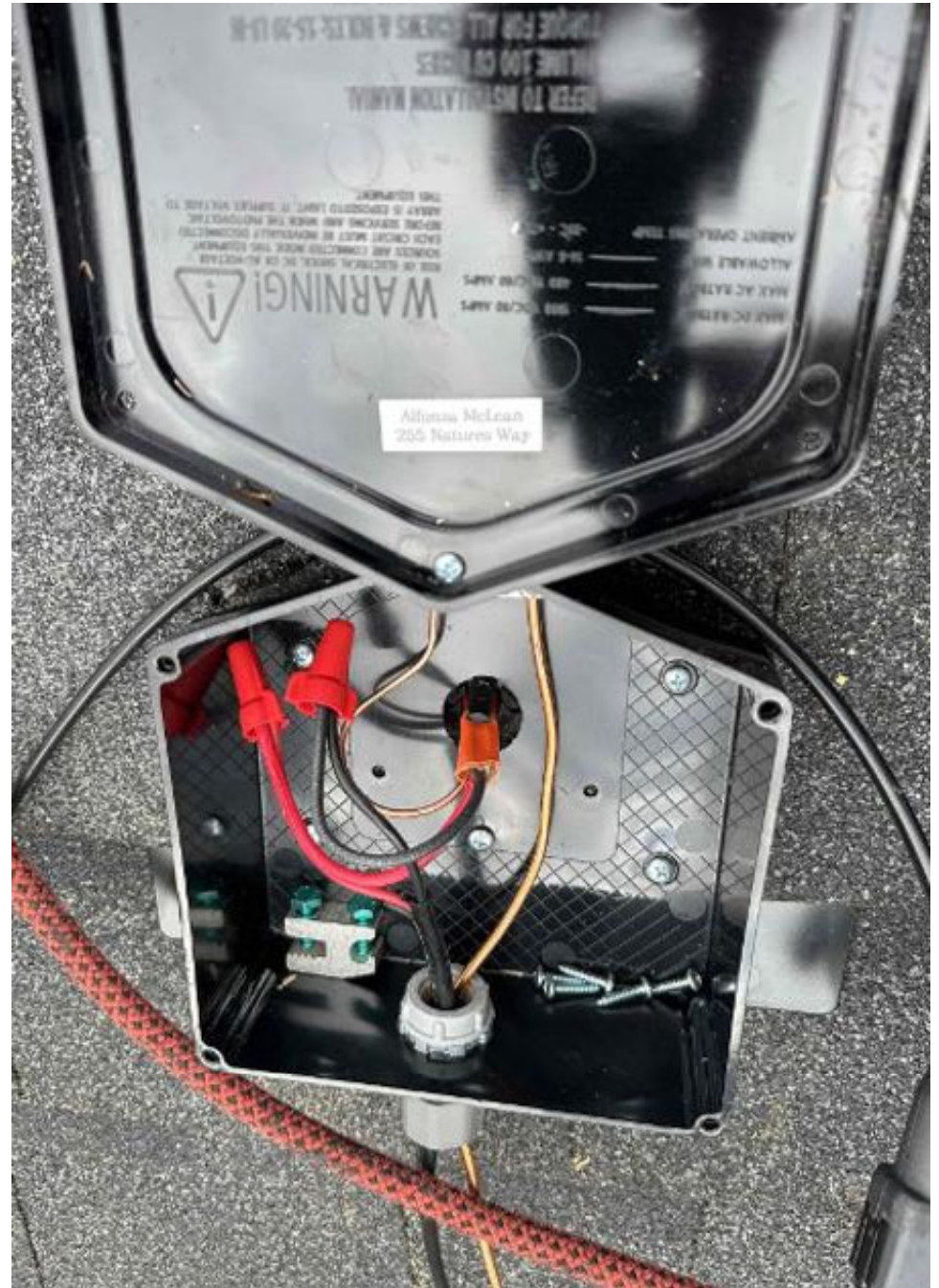












Clipboard with a **Chyxos** clip. The form is a service order for a Blue Raven technician.

**Alfonzo McLean**  
 12/1/22  
 255 Natures Way, Dunn, NC 27834

**BLUE RAVEN**

Special Circumstances / Location / Notes	Special Services	Special Services
	<ul style="list-style-type: none"> <li>• Installation</li> <li>• Maintenance</li> </ul>	<ul style="list-style-type: none"> <li>• Bell Alarm</li> <li>• Bell / Alarm</li> </ul>
	<ul style="list-style-type: none"> <li>• Not a part of service</li> </ul>	<ul style="list-style-type: none"> <li>• Not a part of service</li> <li>• Not a part of service</li> </ul>
	<ul style="list-style-type: none"> <li>• Installation</li> <li>• Not a part of service</li> </ul>	<ul style="list-style-type: none"> <li>• Not a part of service</li> <li>• Not a part of service</li> </ul>
	<ul style="list-style-type: none"> <li>• High Voltage (100V or more)</li> <li>• Electrical (100V or more)</li> </ul>	<ul style="list-style-type: none"> <li>• Not a part of service</li> <li>• Not a part of service</li> </ul>
	<ul style="list-style-type: none"> <li>• Safety Hazard</li> <li>• Not a part of service</li> </ul>	<ul style="list-style-type: none"> <li>• Not a part of service</li> </ul>
<b>Service Request</b> <b>Baby Johnson Hospital</b> <b>800 Pilgrimage Dr</b> <b>Dunn, NC 27834</b>	<b>Hospital Name:</b> <b>Baby Johnson Hospital</b> <b>800 Pilgrimage Dr</b> <b>Dunn, NC 27834</b>	
<b>Service Contact</b> <b>Service Contact Name: Henry Hill (BIM)</b> <b>Service Contact Phone # (919) 756-2611</b>		
Open Positions		
<b>Open Lead</b> <b>Efrain Cruz</b> <b>Dustin Broussard</b> <b>AMOL</b>	<b>Signature</b> <b>ELCS</b> <b>Dawn Egan</b> <b>Bill Schmitt</b>	

















