

**IRONRIDGE**  
Make Solar **Stronger**

**XR-10-168B Rev E**



XR10, RAIL 168" (14 FEET) BLACK

Unit Qty = 4

212208

IR-Patents.com

**WARNING:** This product may contain chemicals that are known to the State of California to cause cancer, birth defects, or other reproductive harm. For more information go to [www.P65Warnings.ca.gov](http://www.P65Warnings.ca.gov).



710



**SOLADECK**

CHINA

WARNING

ADVERTISSEMENT





 **ENPHASE.**

**IQ7A**

Grid Support Interactive Inverter

Power Factor Range: +/- 0.85  
DC input range: 18 - 58 V  
Max. input short-circuit current: 15 A  
Max. input continuous current: 10.2 A  
AC output voltages: 208 / 240 V  
AC output currents: 1.39 / 1.45 A  
AC output frequency: 60 Hz  
AC output power (peak): 295 / 366 VA  
AC output power (max. continuous): 290 / 349 VA  
Operating temperature: -40 °C to +60 °C  
Ingress protection: NEMA Type 6  
Photovoltaic Rapid Shutdown Equipment  
NEC 690.12 and C22.1-2015 Rule 64-21B  
UL1741 SA Compliant | Assembled in Mexico



This device complies with part 15 of the FCC Rules. Operation is subject to the following two conditions: (1) This device may not cause harmful interference. (2) This device must accept any interference received, including interference that may cause undesired operation.



**CAUTION: RISK OF SHOCK. WARRANTY VOID IF COVER REMOVED. NO USER SERVICEABLE PARTS INSIDE. REFER SERVICING TO QUALIFIED SERVICE PERSONNEL.**

**WARNING:** ELECTRIC SHOCK HAZARD. DC CONDUCTORS OF THIS PHOTOVOLTAIC SYSTEM ARE UNGROUNDED AND MAY BE ENERGIZED. AC AND DC VOLTAGE SOURCES TERMINATE INSIDE THIS EQUIPMENT. DISCONNECT BOTH BEFORE SERVICING. PHOTOVOLTAIC ARRAY SUPPLIES A DC VOLTAGE TO THIS EQUIPMENT WHEN EXPOSED TO LIGHT. HOT SURFACES: TO REDUCE THE RISK OF BURNS - DO NOT TOUCH.

**ATTENTION:** PHOTOVOLTAIC SYSTEMS ARE HIGH VOLTAGE. TO PREVENT ELECTROCUTION, DO NOT TOUCH DC CONDUCTORS OR PHOTOVOLTAIC MODULES. TO PREVENT FIRE, DO NOT TOUCH HOT SURFACES. TO PREVENT BURNS, DO NOT TOUCH HOT SURFACES. TO PREVENT ELECTROCUTION, DO NOT TOUCH DC CONDUCTORS OR PHOTOVOLTAIC MODULES. TO PREVENT FIRE, DO NOT TOUCH HOT SURFACES. TO PREVENT BURNS, DO NOT TOUCH HOT SURFACES.





202235170028

202235170028  
1Q7A-72-M-US











710

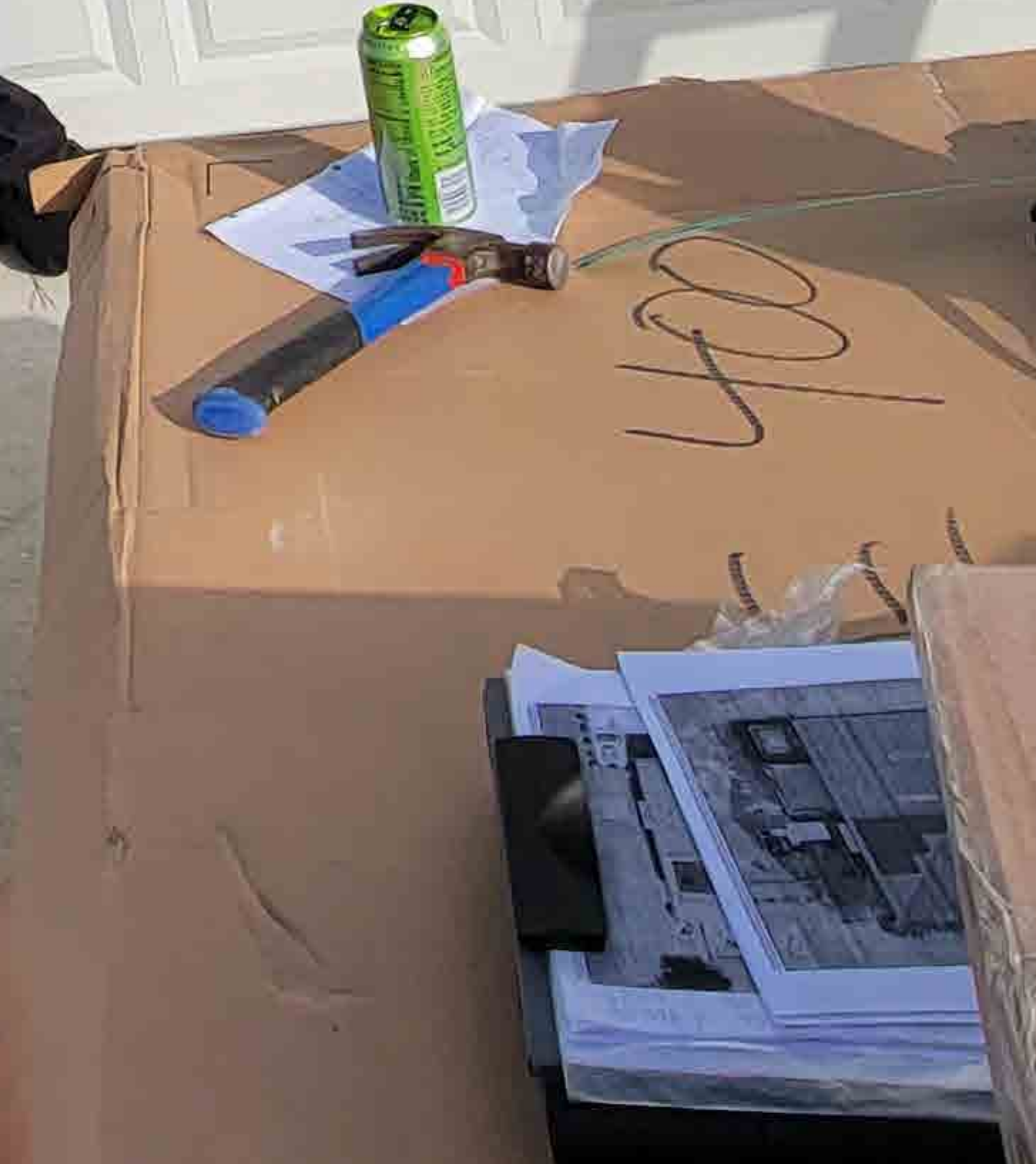
40

UNIRAC  
CABLES

















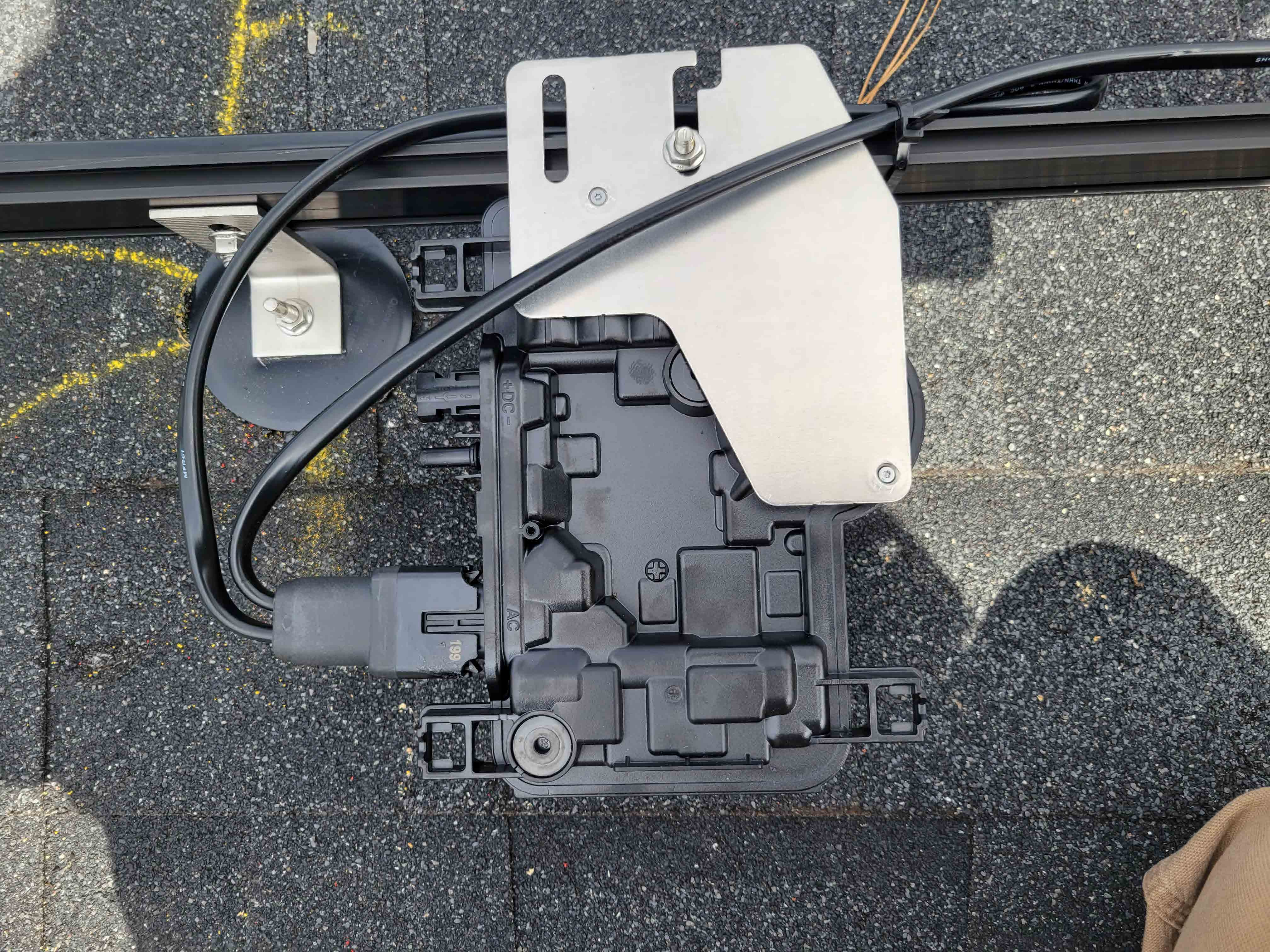






ES00984-B (UL) Type DG 600V THHN/THWN-2 90C dry/wet 2/C 12AWG -40C -oil res 1 sunlight resistant FT4 SIMON ROHS





+DC-

AC

199

MPPST





883-01123 05  
IQ7A-72-M-US 202235169851





840-777-4778  
250  
175



M18

FR6

RESISTANT FT

SHIMON

ROCK

DE 600V TMM/TM













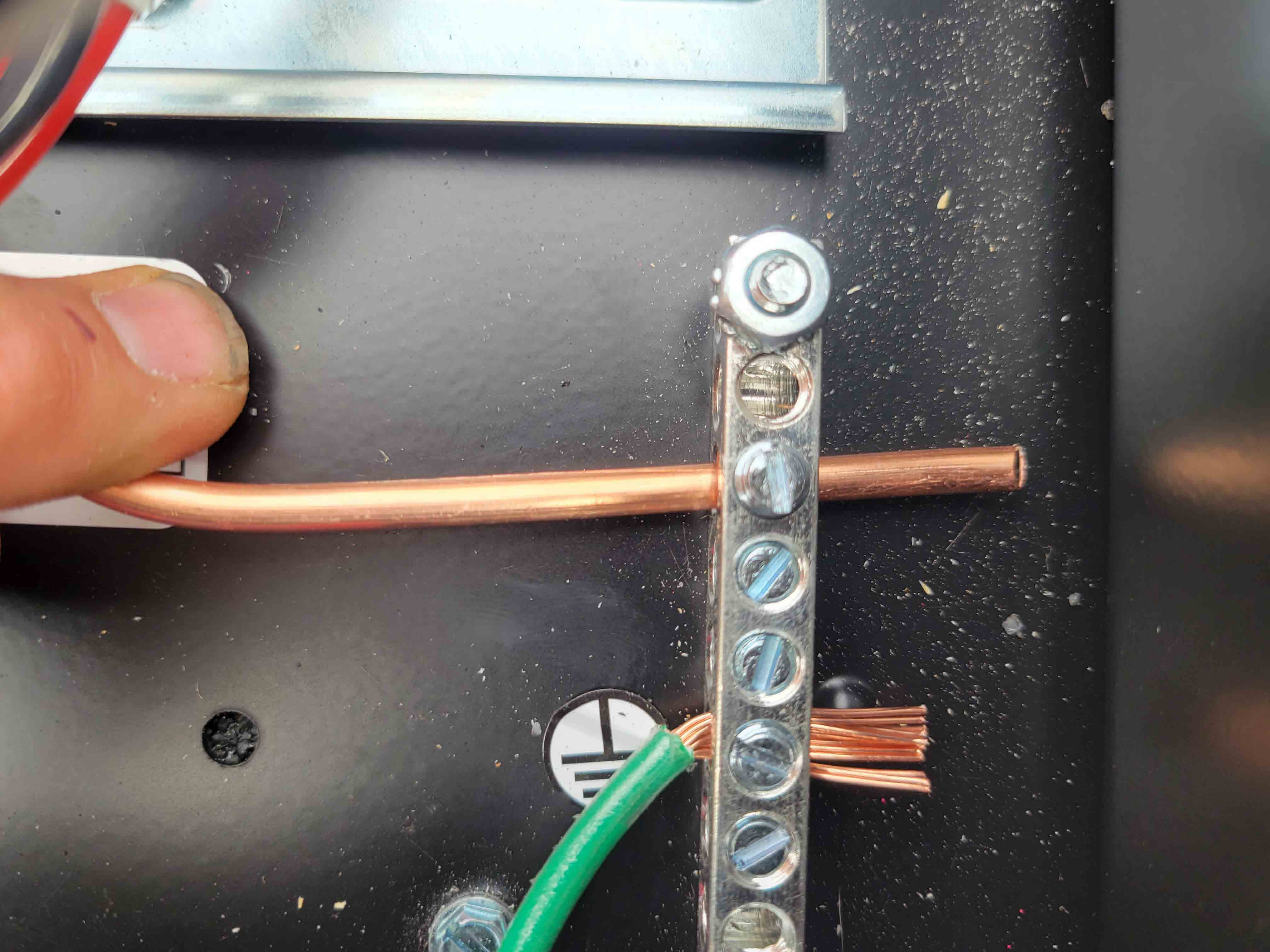




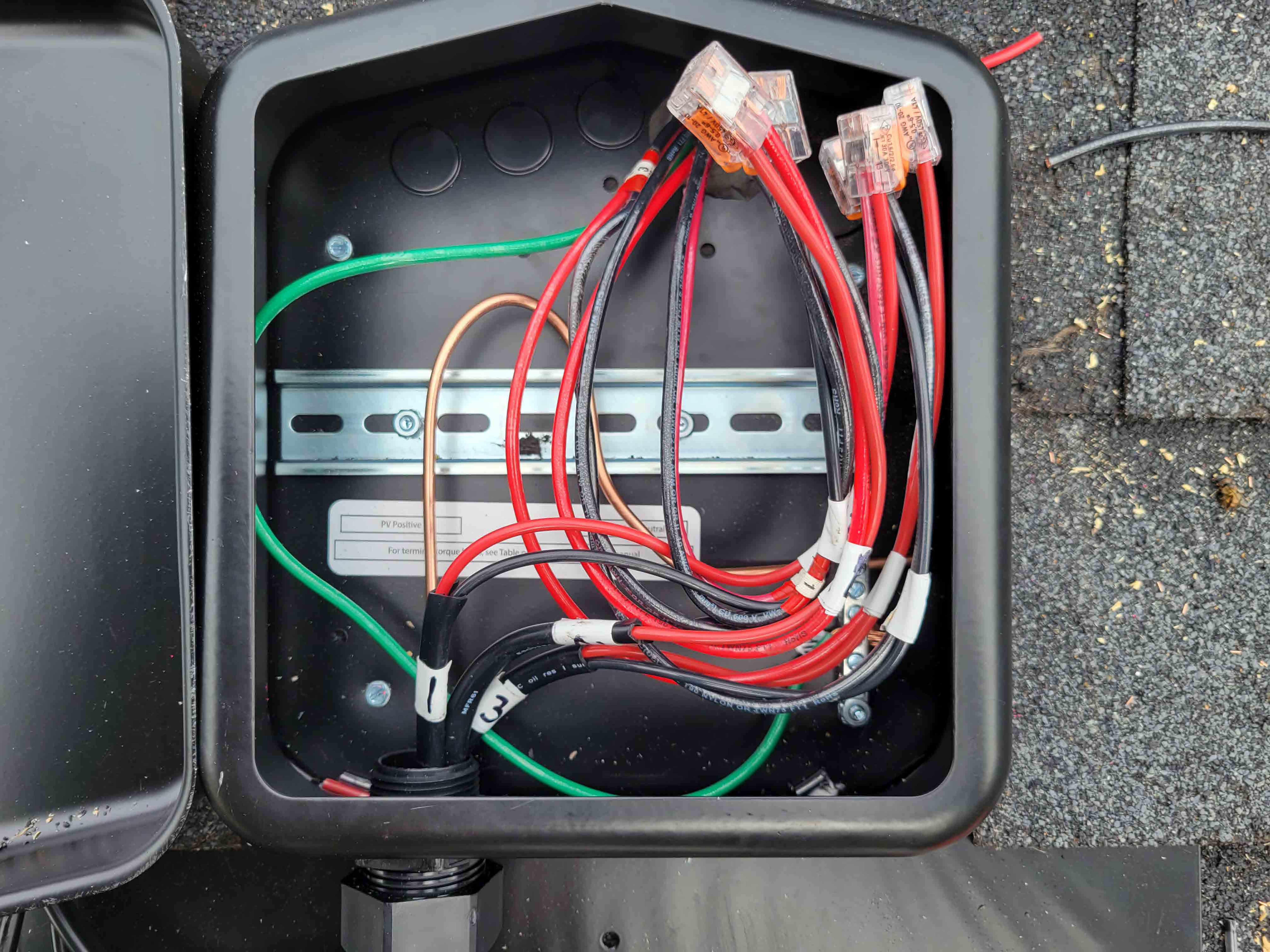












PV Positive [ ]  
For termin[ ] torque [ ] see Table [ ]

1

3

100% NYLON OR TWISTED PA  
100% NYLON OR TWISTED PA  
100% NYLON OR TWISTED PA

100% NYLON OR TWISTED PA  
100% NYLON OR TWISTED PA  
100% NYLON OR TWISTED PA

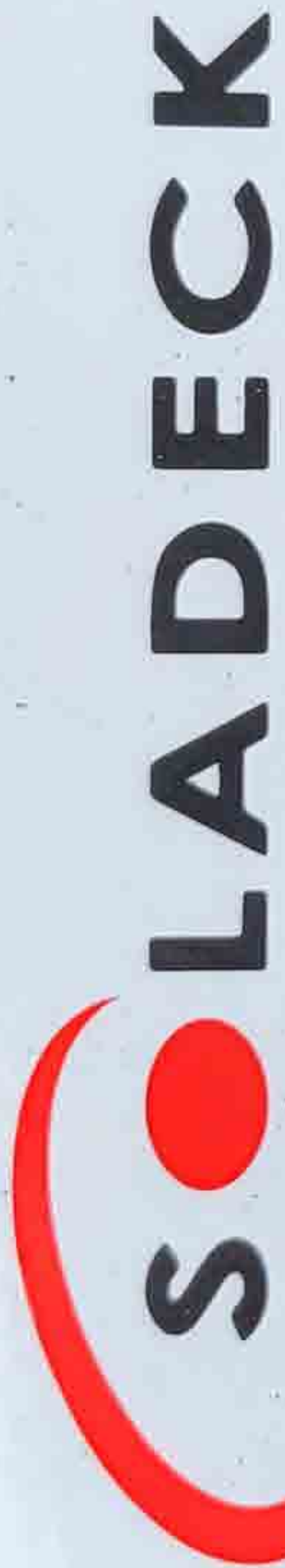


R.S.T.C. Enterprises

Patent No. US 7,626,118 B1



Intertek  
3134037



www.rstcenterprises.com

Photovoltaic Combiner/Enclosure Conforms to UL 1741; Certified to CSA C22.2 No. 290; Nema Type 3R

Q1  Q2  Q3  Q4  21  22  23  24

0799 Series  0766-41AD

Max. Ratings: 600 VDC/15 AMPS; 240 VAC/60 AMPS; Short circuit 10kA, Ambient Temp 75°C  
Refer to the instruction manual for terminal torque information.



**⚠ WARNING**

HIGH VOLTAGE. KEEP OUT!  
RISK OF ELECTRICAL SHOCK. ONLY TRAINED SERVICE PERSONNEL ALLOWED ACCESS. SUITABLE FOR FIELD INSTALLATION. CONDUCTORS SIZED FOR AN ALLOWABLE AMPACITY OF 90°C. AN EXTERNAL OUTPUT CIRCUIT DISCONNECTING MEANS SHALL BE PROVIDED WHEN REQUIRED BY THE CANADIAN ELECTRICAL CODE.  
CAUTION: BEFORE SERVICING FUSES, DISCONNECT ALL PHOTOVOLTAC INPUTS AND OUTPUT CIRCUITS.  
WARNING: MORE THAN ONE LIVE CIRCUIT. SEE DIAGRAM. PLEASE CONSULT THE KIT INSTRUCTION MANUAL FOR COMBINER COMPONENT AND KIT RATINGS.

**⚠ AVERTISSEMENT**

HAUTE TENSION. GARDEZ À L'ÉCART! RISQUE DE CHOC ÉLECTRIQUE. SEUL LE PERSONNEL DE SERVICE FORMÉ A AUTORISÉ L'ACCÈS. CONVIENT À UNE UTILISATION EN CHAMP. LES CONDUCTEURS SONT dimensionnés POUR UNE AMPACITÉ ADMISSIBLE DE 90°C. UN MOYEN DE DÉCONNEXION DU CIRCUIT DE SORTIE DOIT ÊTRE FOURNI EN CONFORMITÉ AVEC LE CODE ÉLECTRIQUE CANADIEN. ATTENTION: AVANT D'ENTREPRENDRE LES FUSIBLES, DÉBRANCHEZ TOUTES LES ENTRÉES ET CIRCUITS DE PHOTOVOLTAÏQUE.  
AVERTISSEMENT: PLUSIEURS CIRCUITS EN DIRECT. VOIR ÉVALUATIONS DES COMPOSANTS ET DES KITS DE COMBINAISON.









MFR61

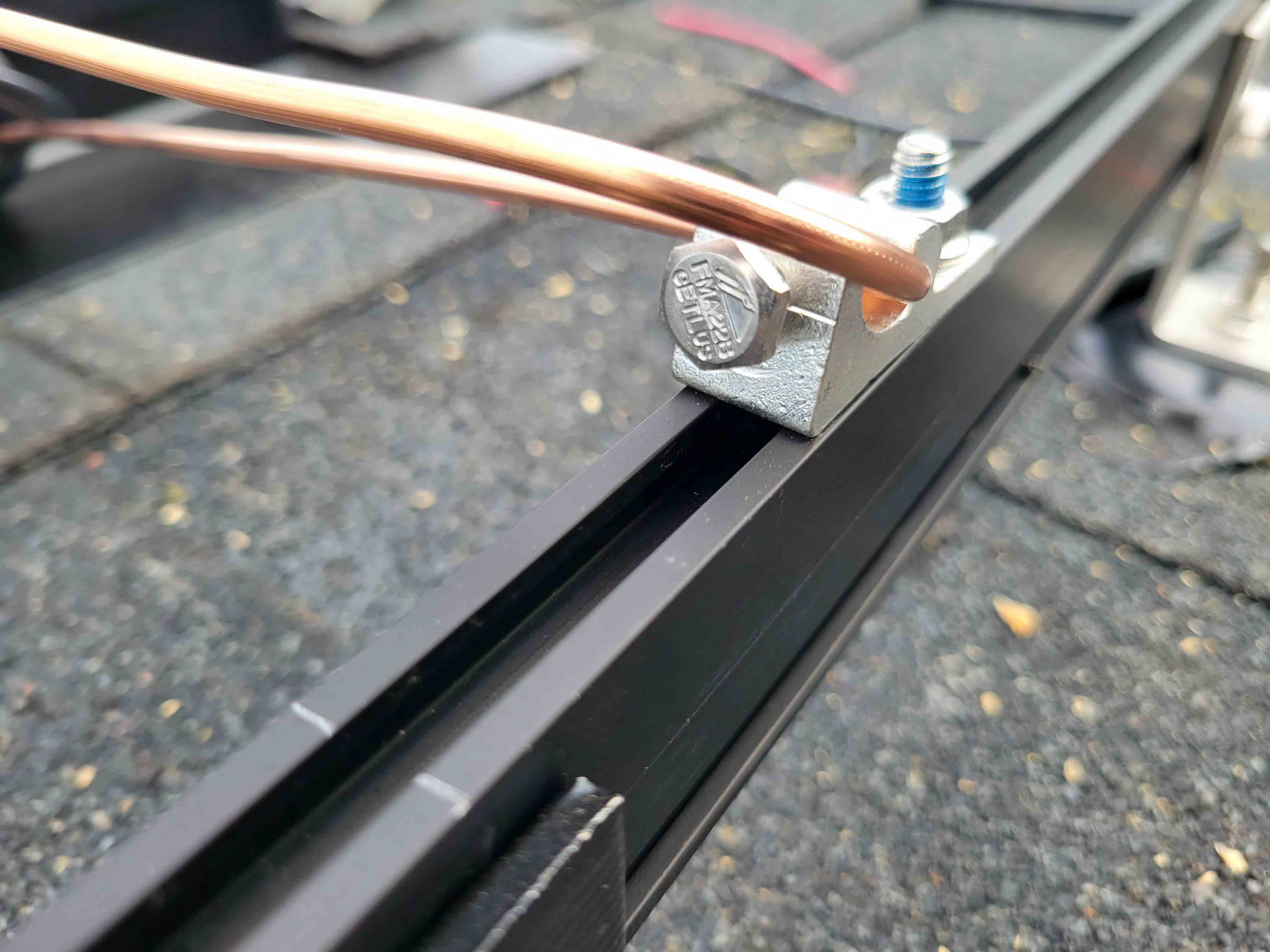
11/22/03  
821113

FTA sinson ROHS

















ENGLER  
EST. 1853









WIBON ROHS







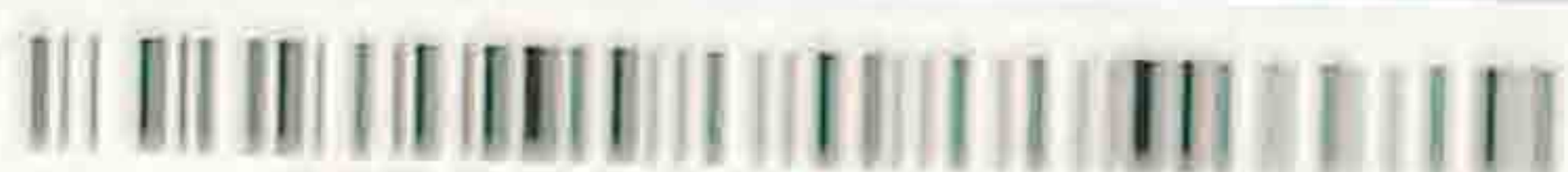
NCSOLAR  
Solar Ins  
919-83

m  
ns









VS32207170307H



### Photovoltaic Module

Module Type: **FBM400MFG-BB**

Maximum Power(Pmpp):	400W
Open Circuit Voltage(Voc):	37.20V±3%
Short Circuit Current(Isc):	13.68A±3%
Maximum Power Voltage(Vmpp):	31.17V
Maximum Power Current(Imp):	12.84A
Max System Voltage:	1000V
Tolerance of Pmpp:	±3%
Power Sorting:	0~+5W
Series Fuse Rating:	30A
Dimension:	1723×1133×35(mm)
Weight:	21.7kg
Standard Test Condition:	1000W/m <sup>2</sup> , 25°C, AM1.5
PV module classification:	Type 2(For USA only) Class C(For Canada only)



See installation instructions for  
Installation Requirements to  
Achieve a Specified System Fire  
Class Rating with this Product.



**WARNING**  
Hazardous Electricity Can shock,  
burn or cause death. Do not  
touch terminals.  
Électricité dangereuse peut le faire  
Choc brûlures ou décès. Ne touchez  
pas le terminal.



United Renewable Energy Co., Ltd

No.7, Li-Hsin 3rd Rd., Hsinchu Science Park, Hsinchu, Taiwan

Module Assembly: VN  
<http://www.urecorp.com/>









V832207170524H

#URECO

Photovoltaic Module

FBM400MFG-BB

Module Type:

400W

Maximum Power(P<sub>mpp</sub>):

37.20V ± 3%

Open Circuit Voltage(V<sub>oc</sub>):

13.68A ± 3%

Short Circuit Current(I<sub>sc</sub>):

31.17V

Maximum Power Voltage(V<sub>mpp</sub>):

12.84A

Maximum Power Current(I<sub>mpp</sub>):

1000V

Max System Voltage:

± 3%

Tolerance of P<sub>mpp</sub>:

0 → + 5W

Power Sorting:

30A

Series Fuse Rating:

1723x1133x35(mm)

Dimensions:

21.7kg

Weight:

1000W/m<sup>2</sup>, 25°C, AM1.5

Standard Test Condition:

Type 2 (For USA only)

PF module classification:

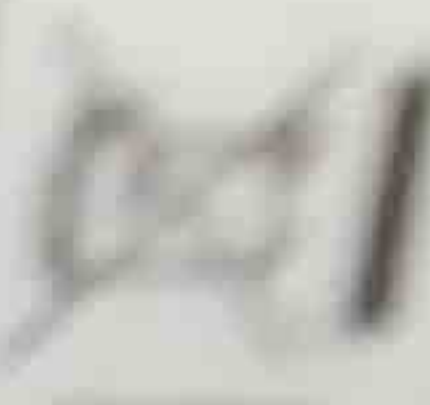
Class C (For Canada only)



The manufacturer certifies that this product complies with the requirements of the UL 1741 standard for safety and performance. This certification is based on testing conducted in accordance with the UL 1741 standard. The manufacturer is not responsible for any damage or injury resulting from the use of this product in a manner not intended by the manufacturer.



Do not touch the solar cells or the junction box. The solar cells and the junction box are sensitive to static electricity. Use proper static discharge procedures when handling the solar cells or the junction box. Do not use tools or sharp objects to touch the solar cells or the junction box. Do not use water or other liquids to clean the solar cells or the junction box. Do not use high pressure water to clean the solar cells or the junction box. Do not use abrasive materials to clean the solar cells or the junction box. Do not use solvents to clean the solar cells or the junction box. Do not use any other cleaning methods that could damage the solar cells or the junction box.



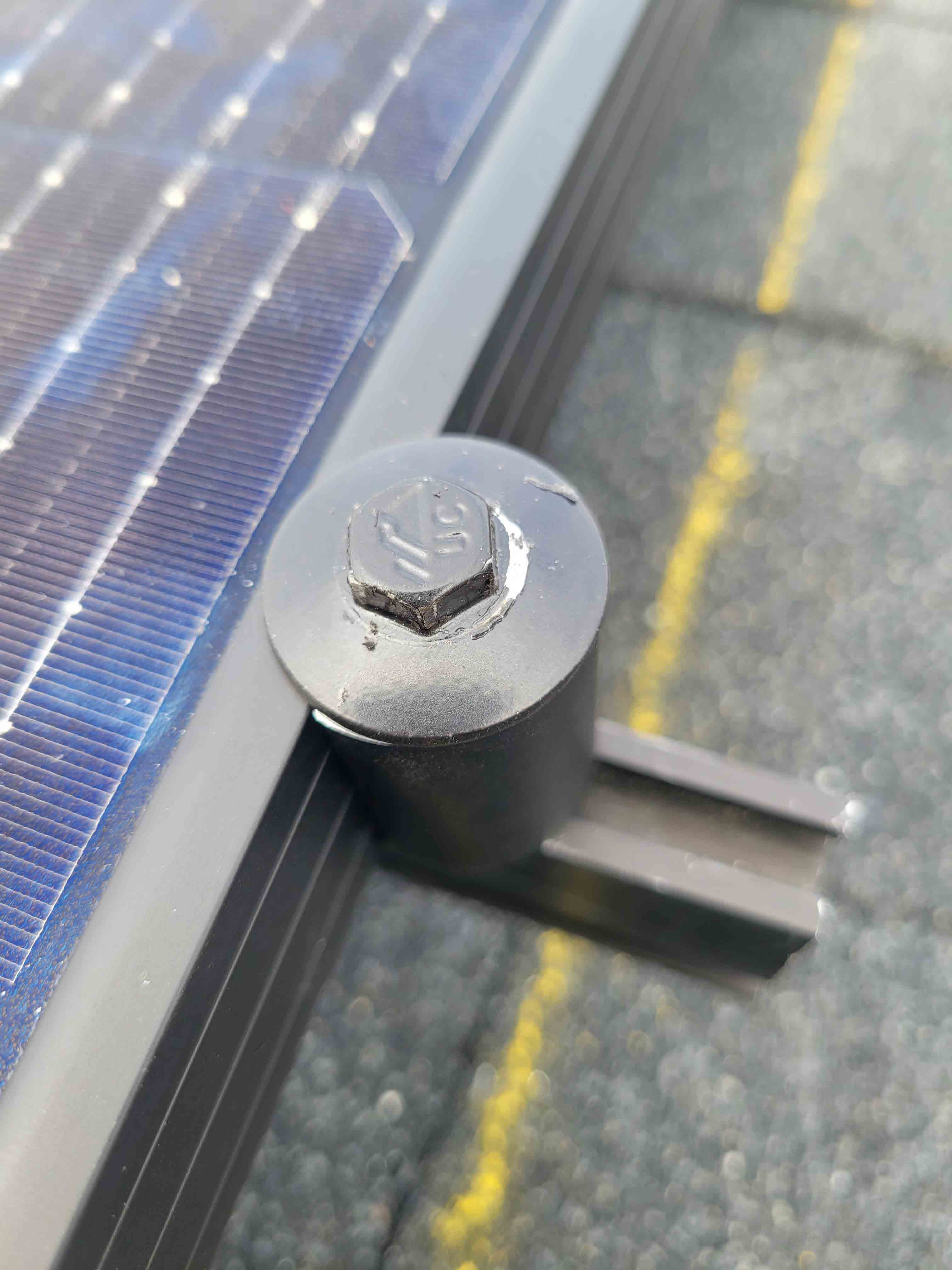
United Renewable Energy Co., Ltd  
No. 7, Li-Hsin 1st Rd., Hsinchu Science Park, Hsinchu, Taiwan

Module Assembly: 100  
<http://www.ureco.com.tw>























 **WARNING**  
DUAL POWER SUPPLY  
SOURCES: UTILITY GRID AND  
PV SOLAR ELECTRIC SYSTEM



Service Connection  
Not to be used for  
Service Use