



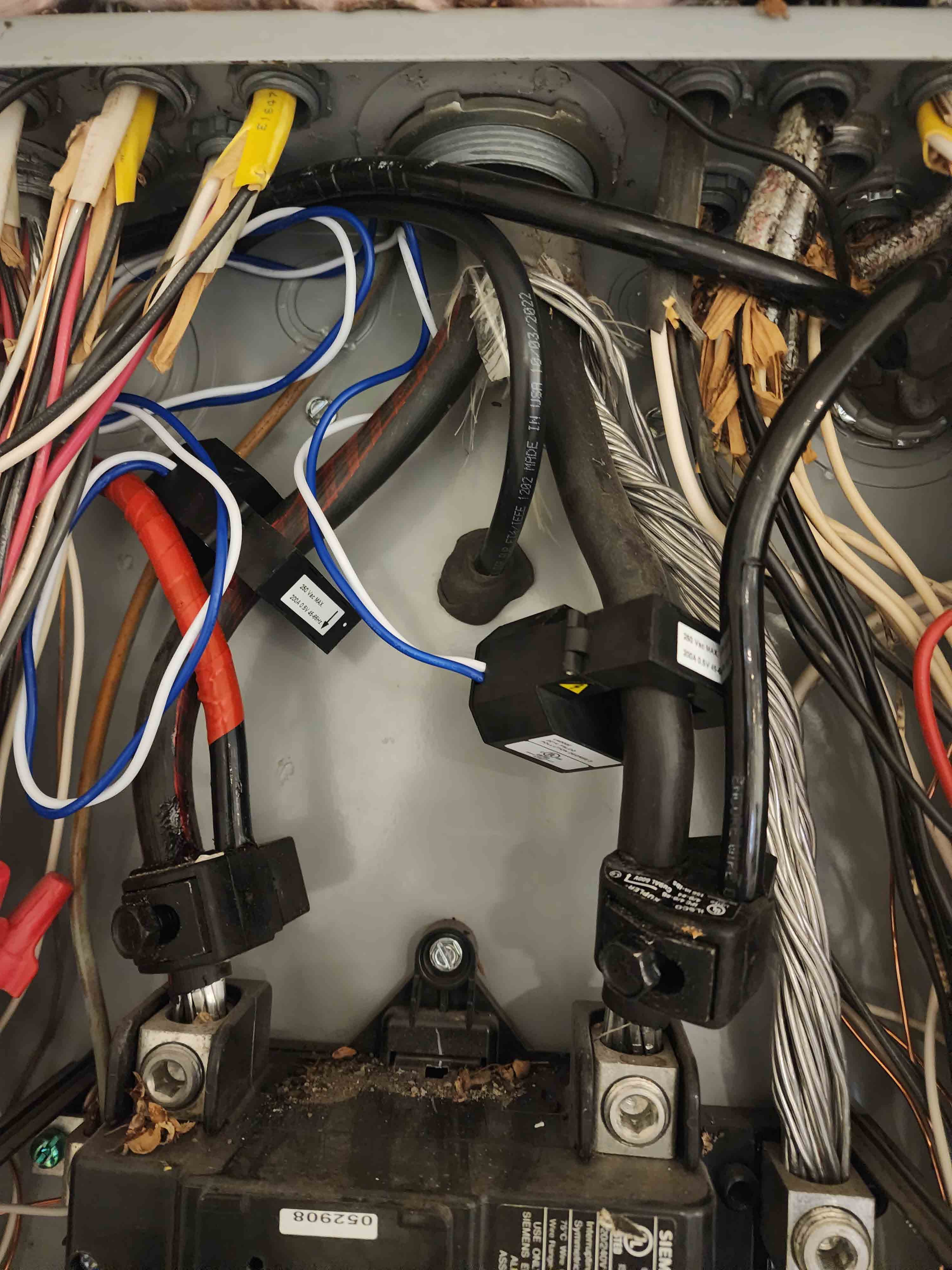


MADE IN USA 100000000

250 Vac MAX  
200A 0.5V 45-

LSCO KUPLER PC 40-46 LISTED 40-46 150 lb.-lbs. Coupled 600V



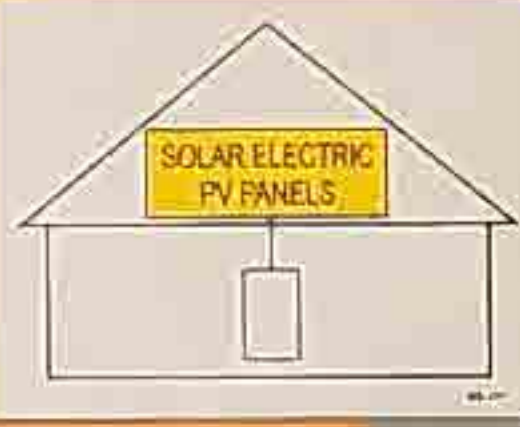




PV DISCONNECT LOCATED: SOUTH SIDE OF HOUSE

**SOLAR PV SYSTEM EQUIPPED  
WITH RAPID SHUTDOWN**

TURN RAPID SHUTDOWN  
SWITCH TO THE  
"OFF" POSITION TO  
SHUT DOWN PV SYSTEM  
AND REDUCE  
SHOCK HAZARD  
IN THE ARRAY



**⚠ WARNING**

DUAL POWER SUPPLY  
SOURCES: UTILITY GRID AND  
PV SOLAR ELECTRIC SYSTEM











 ENPHASE

**IQ7A**

Grid Support Interactive Inverter

Power Factor Range:  $\pm 0.85$   
DC Input range: 18 - 58V  
Max. input short-circuit current: 15 A  
Max. input continuous current: 10.2 A  
AC output voltage: 208 / 240 V  
AC output current: 13.9 / 14.5 A  
AC output frequency: 60 Hz  
AC output power (peak): 295 / 365 VA  
AC output power (max. continuous): 230 / 349 VA  
Operating temperature: -40 °C to +60 °C  
Ingress protection: NEMA Type 6  
Photovoltaic Rapid Shutdown Equipment  
NEC 690.12 and C22.1-2015 Rule 6.1.3 B  
UL1741 SA Compliant | Assembled in Mexico



This device complies with part 15 of the FCC Rules. Operation is subject to the following two conditions: (1) This device may not cause harmful interference. (2) This device must accept any interference received, including interference that may cause undesired operation.

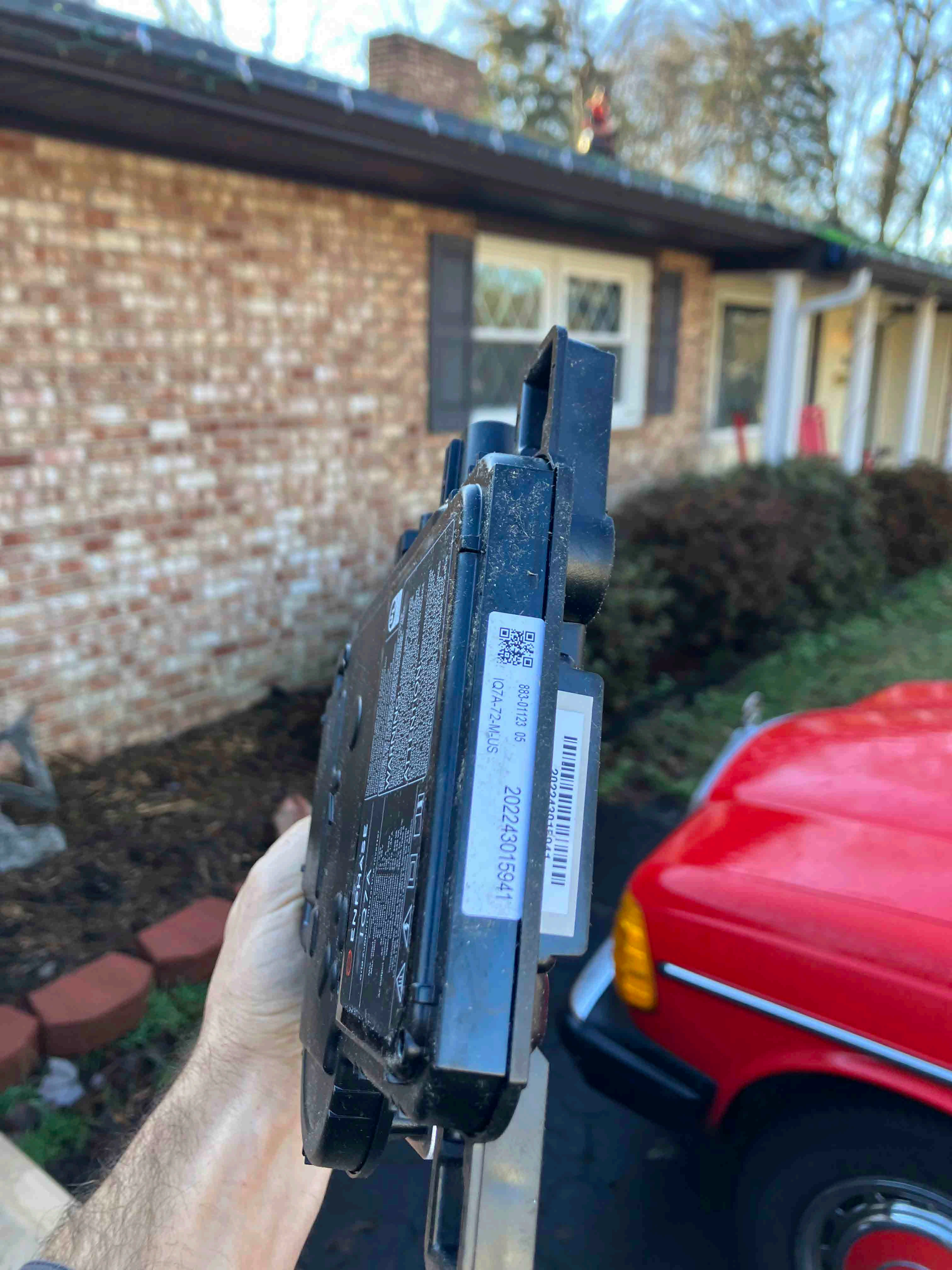


**CAUTION: RISK OF SHOCK. WARRANTY VOID IF COVER REMOVED. NO USER SERVICEABLE PARTS INSIDE. REFER TO QUALIFIED SERVICE PERSONNEL.**

**WARNING: ELECTRIC SHOCK HAZARD. DC CONDUCTORS OF THIS PHOTOVOLTAIC SYSTEM ARE UNGROUNDING AND MAY BE ENERGIZED. AC AND DC VOLTAGE SOURCES TERMINATE INSIDE THIS EQUIPMENT. DISCONNECT BOTH BEFORE SERVICING. PHOTOVOLTAIC ARRAY SUPPLIES A DC VOLTAGE TO THIS EQUIPMENT WHEN EXPOSED TO LIGHT. HOT SURFACES: TO REDUCE THE RISK OF BURNS - DO NOT TOUCH.**

**ATTENTION: RISQUE D'ELECTROCUTION. LES CONDUCTEURS CC DE CE SYSTÈME PHOTOVOLTAÏQUE NE SONT PAS RELIÉS À LA TERRE ET PEUVENT ÊTRE SOUS TENSION DES SOURCES DE TENSION CA ET CC SONT CONNECTÉS À CET APPAREIL. SOUS LES DEUX SOURCES AVANT TOUTE INTERVENTION. LES CÂBLES COURANT CONTINU SONT SOUS TENSION LORSQUE LE CHAMP PHOTOVOLTAÏQUE EST EXPOSÉ À LA LUMIÈRE. RISQUE DE BRÛLURE. NE PAS TOUCHER.**





883-01123 05  
IQ7A-72-MEUS



202243015941













FKC22B  
02TL08





FM222B  
CELLU









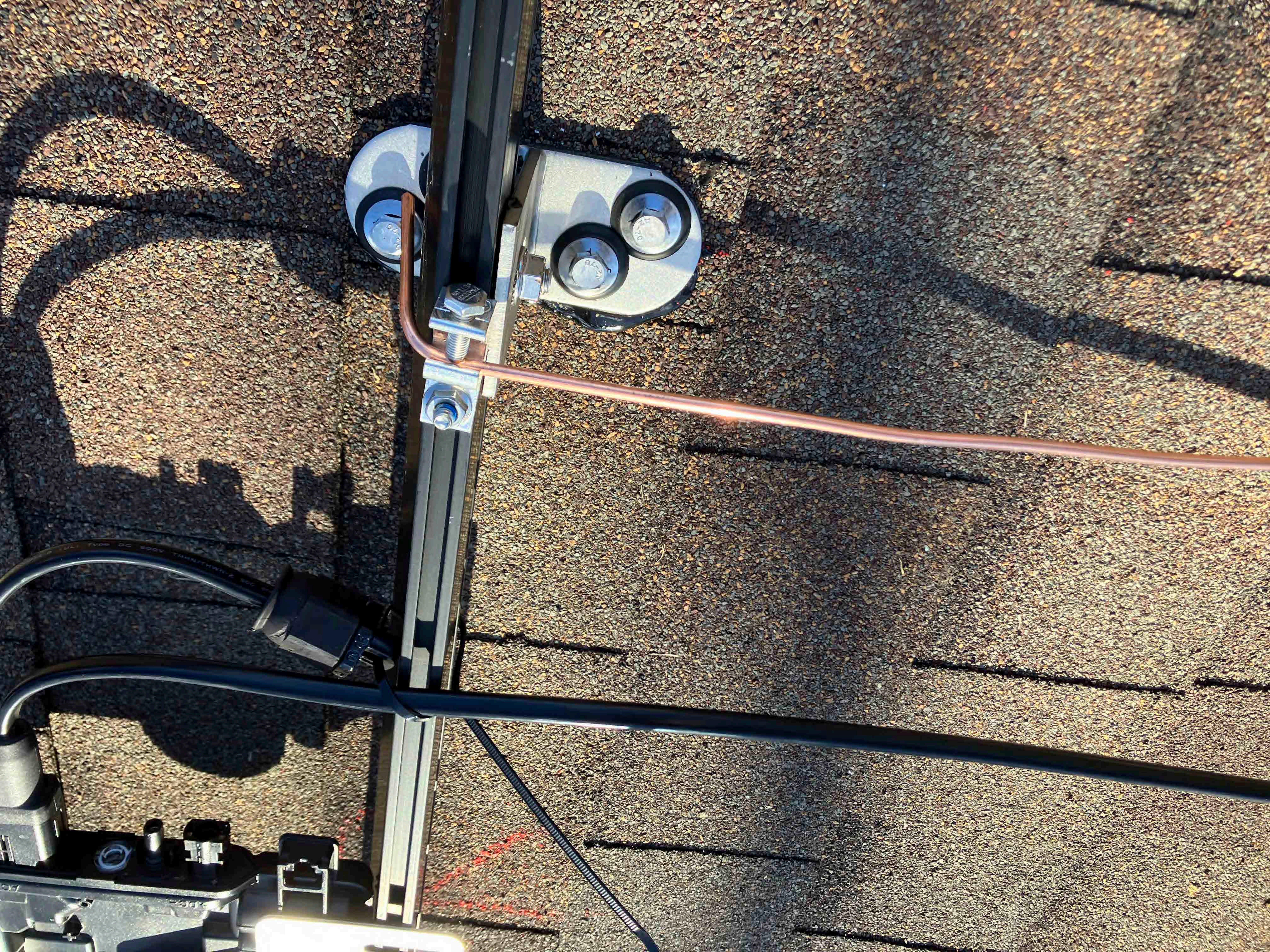
SUNLIGHT RESISTANT PVA 1988





Quickcrows Int'l Corp  
Pat # 4,837,748

















EMCO  
GETLIS

32 AD



