



UL LISTED
CLASS CUL ENCLOSED POWER
ISSUE NO. 10000
N-17-N

250 Vac MAX.
200A 0.6V 45-66Hz

250 Vac MAX.
200A 0.6V 45-66Hz

E.T.N.
Circuit Breaker
CSR 25k
2 Pole
120/240 V~ 60Hz 48°C
200 A
CAL. CSR2500N
Style 7830C2T043
Interrupting Capacity
ANSI Sect. 88.4
Vbf 125-200 ~ 25
Vbf 125-200 ~ 25
Trip
OFF

Terminal	181	182
Wire	1.0-1.6	2.0
CU/AL	1-200	214

06 06 06 06 06 06
25 25 25 25 25 25
31 35 20 20
TRIP 100A 250V E.T.N. Type 25k
TRIP 100A 250V E.T.N. Type 25k
TRIP 100A 250V E.T.N. Type 25k

⚠ DANGER/PELIGRO

HAZARD OF ELECTRIC SHOCK, EXPLOSION, OR ARC FLASH



- Apply appropriate personal protective equipment (PPE) and follow safe electrical work practices. See NFPA70E.
- Turn off power supplying switch before working on or inside switch.
- Always use a properly rated voltage sensing device at all line and load fuse clips to confirm switch is off.

- Reinstall all parts and latch door before turning power on and operating switch.
- Unless class J or class R fuses are used, this switch will become a fire and casualty hazard if installed on circuits capable of delivering more than 10,000 rms symmetrical amperes.
- Do not use renewable link fuses in fused switches.

Failure to follow these instructions will result in death or serious injury.

PELIGRO DE DESCARGA ELÉCTRICA, EXPLOSIÓN O DESTELLO POR ARQUEO

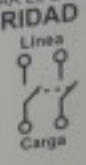
- Utilice equipo de protección personal (EPP) apropiado y siga las prácticas de seguridad eléctrica establecidas por su Compañía (consulte la norma NFPA 70E).
- Desenergice el interruptor antes de realizar cualquier trabajo dentro o fuera de él.

- Siempre utilice un dispositivo detector de tensión nominal adecuado en los clips para fusibles de los lados de carga y línea para confirmar la desenergización del interruptor.
- Vuelva a instalar todas las piezas y ponga seguro a la puerta antes de energizar y hacer funcionar el desconector.
- Si no se utilizan fusibles clase J o R, este interruptor podrá causar incendios y lesiones personales serias en caso de ser instalado en circuitos capaces de suministrar más de 10 000 A simétricos r.m.s.
- No utilice fusibles de cinta renovables en los interruptores de fusible.

El incumplimiento de estas precauciones podrá causar la muerte o lesiones serias.

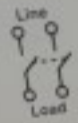
LEA ESTAS INSTRUCCIONES ANTES DE INSTALAR EL EQUIPO

INTERRUPTORES DE SEGURIDAD
 NO. DE CATALOGO DU222RB SERIE E1
 GABINETE TIPO 3R
 A PRUEBA DE LLUVIA
 CORRIENTE: A: 60
 UN TIRO, SIN PORTAFUSIBLES
 FRECUENCIA: 60 Hz



SAFETY SWITCH SERIES E1

CATALOG NO. DU222RB
 TYPE 3R ENCLOSURE
 RAINPROOF
 AMPS: 60
 SINGLE THROW NOT FUSIBLE
 FREQUENCY: 60 Hz



H.P. RATING
 STD. MAX.
 10

VOLTS: 240 Vac 1 PHASE

LUG TORQUE REQUIREMENTS	
WIRE SIZE	TORQUE (IN-LLBS)
#14 - #8	30
#6 - #4	35
3	45

2236

CABALLO DE FUERZA (HP) MAX. EST. 10

REQUISITOS DE PAR DE APRIETE DE LAS ZAPATAS	
CALEBRE DEL CABLE	PAR DE APRIETE EN LBS-PIE
#14 - #8	30
#6 - #4	40
3	45

Lugs suitable for 60°C and 75°C copper or aluminum conductors.

Torque main lugs mounting hardware to 50 in-lbs.
 This switch is suitable for use on a circuit capable of delivering not more than (A) 10,000 rms symmetrical A, 240 V ac maximum rated 60 A protected by a circuit breaker or class H or class R fuses rated 60 A maximum (maximum of 60) 10,000 rms symmetrical A, 240 V ac maximum when protected by class J or class R fuses rated 60 A maximum.
 Oil mechanism bearing surfaces (not current carrying parts) annually.
 When equipment ground-terminal ground lugs are required, order catalog No. 493357A1.
 Suitable for use as service equipment.

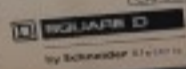
Zapatas adecuadas para conductores de cobre o de aluminio a una temperatura de 60°C y 75°C.

Apriete los bridas de montaje de las zapatas principales a 30 lb-pulg.
 Este desconector se puede usar en un circuito capaz de suministrar no más de (A) 10 000 A simétricos r.m.s. 240 V ac como máximo cuando está protegido por un interruptor automático o por fusibles clase H o R de 60 A nominales como máximo, o (B) 50 000 A simétricos r.m.s. 240 V ac como máximo cuando está protegido por fusibles clase J o R de 60 A nominales máximos.

Engrose los superficies de los cojinetes del mecanismo (no las piezas corrientes de corriente) una vez al año.
 Cuando es necesario utilice zapatas de puesta a tierra del equipo o de aterramiento, solicite las piezas de catálogo 493357A1.
 Adecuado para uso como equipo de servicio.

Circuiting cap included - Order fuses separately per hub (Part below)	
WIRE SIZE	FUSE
#14 - #8	15, 20, 25, 30, 35, 40, 45, 50, 60
#6 - #4	15, 20, 25, 30, 35, 40, 45, 50, 60
3	15, 20, 25, 30, 35, 40, 45, 50, 60

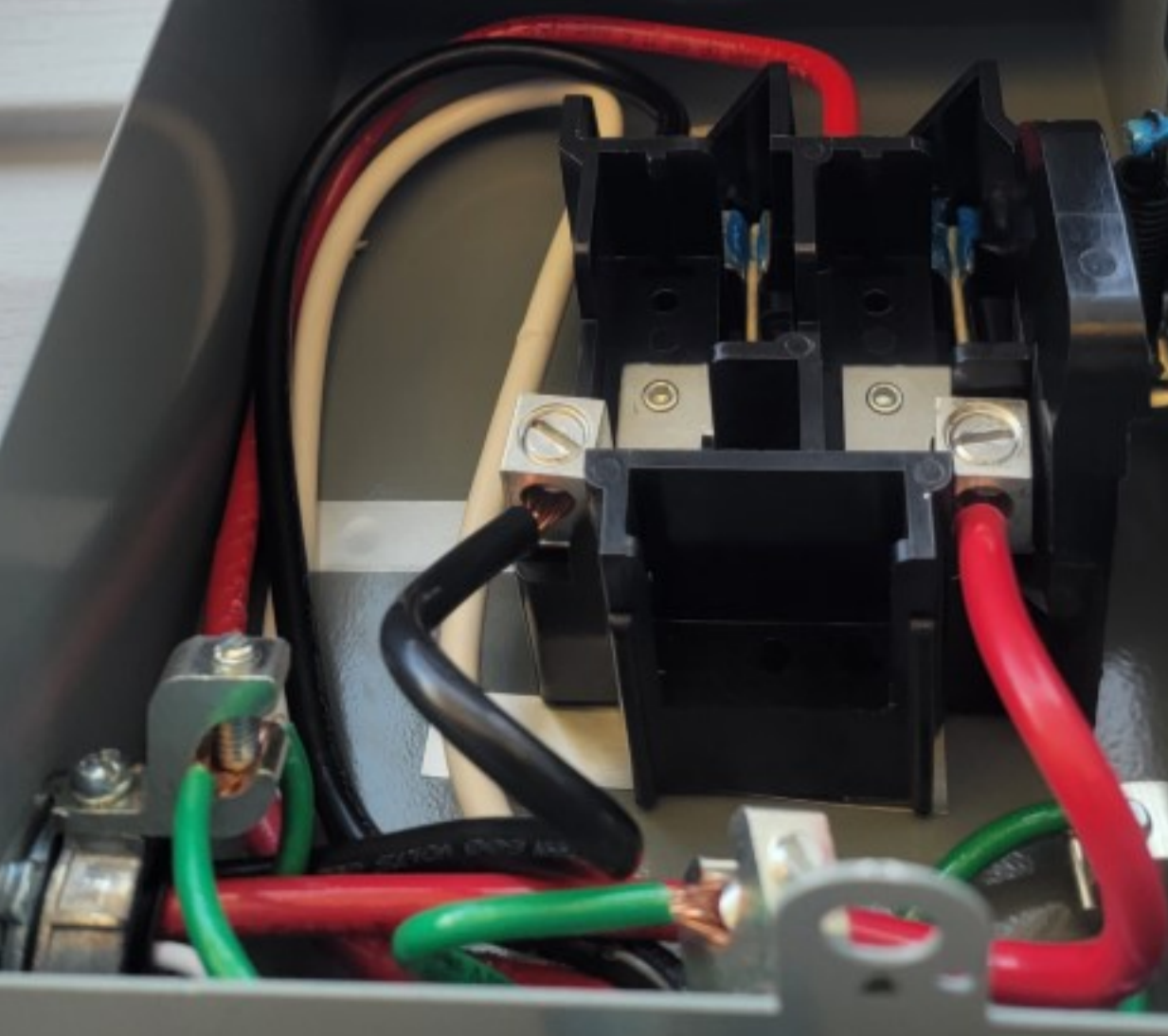
Cableado de cable incluido - Solicite los fusibles por separado según el tamaño de receptáculo que requiere cada aplicación	
TUBO DE FUSIBLE	FUSIBLE
#14 - #8	15, 20, 25, 30, 35, 40, 45, 50, 60
#6 - #4	15, 20, 25, 30, 35, 40, 45, 50, 60
3	15, 20, 25, 30, 35, 40, 45, 50, 60



MADE IN MEXICO / HECHO EN MEXICO

by Schneider 571 01 12

493357A1



⚠ DANGER/PELIGRO



HAZARD OF ELECTRIC SHOCK, EXPLOSION, OR ARC FLASH

- Apply appropriate personal protective equipment (PPE) and follow safe electrical work practices. See NFPA 70E.
- Turn off power supplying switch before working on or inside switch.
- Always use a properly rated voltage sensing device at all line and load fuse clips to confirm power on and operating switch.
- Unless class J or class R fuses are used, this switch will become a fire and casualty hazard if installed on circuits capable of delivering more than 10,000 rms symmetrical amperes.
- Do not use removable link fuses in fused switches.

Failure to follow these instructions will result in death or serious injury.

PELIGRO DE DESCARGA ELÉCTRICA, EXPLOSIÓN O DESTELLO POR ARQUEO

- Utilice equipo de protección personal (EPP) apropiado y siga las prácticas de seguridad eléctrica establecidas por su Compañía (consulte la norma NFPA 70E).
- Desenergice el interruptor antes de realizar cualquier trabajo dentro o fuera de él.
- Siempre utilice un dispositivo detector de tensión nominal adecuado en los clips para fusibles de los lados de carga y línea para confirmar la desconexión del interruptor.
- Vuelva a instalar todas las piezas y ponga seguro a la puerta antes de empujar y hacer funcionar el desconectador.
- Si no se utilizan fusibles clase J o R, este interruptor podrá causar incendios y lesiones personales serias en caso de ser instalado en circuitos capaces de suministrar más de 10 000 A simétricos rms.
- No utilice fusibles de cinta renovables en los interruptores de fusible. El incumplimiento de estas precauciones podrá causar la muerte o lesiones serias.

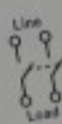
SAFETY SWITCH SERIES E1

CATALOG NO. DU221RB
TYPE 3R ENCLOSURE
RAINPROOF
ANPS: 88
SINGLE THROW NOT FUSIBLE
FREQUENCY: 60 Hz

H.P. RATING
STD. MAX.
10

VOLTS:
240 Vac 1 PHASE

TORSION REQUIREMENTS	
SIZE (IN)	TORQUE (IN-LBS)
1/4 - 3/8	25
3/8 - 1/2	40
1/2 - 5/8	60
5/8 - 3/4	80



2235

Lugs suitable for 60°C and 75°C copper or aluminum conductors.

Torque main lugs mounting hardware to 30 in-lbs.
This switch is suitable for use on a circuit capable of delivering not more than (A) 10,000 rms symmetrical A, 240 V ac maximum when protected by a circuit breaker or class H or class R fuses rated 60 A maximum or 20 (6,000 rms symmetrical A, 240 V ac maximum when protected by class J or class R fuses rated 60 A maximum.
Of mechanism bearing surfaces (not current carrying parts) annually.
When equipment ground service ground lugs are required, order catalog no. PK307A1.
Suitable for use as service equipment.

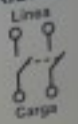
Clamping Cap included - Order fuses separately per table chart below

CATALOG NO.	SIZE (IN)	TORQUE (IN-LBS)	TYPE
PK307A1	1/4 - 3/8	25	1
PK307A2	3/8 - 1/2	40	2
PK307A3	1/2 - 5/8	60	3
PK307A4	5/8 - 3/4	80	4

MADE IN MEXICO / HECHO EN MEXICO

LEA ESTAS INSTRUCCIONES ANTES DE INSTALAR EL EQUIPO INTERRUPTORES DE SEGURIDAD SERIE E1

NO. DE CATÁLOGO DU222RB
GABINETE TIPO 3R
A PRUEBA DE LLUVIA
CORRIENTE: A: 60
UN TIRO, SIN PORTAFUSIBLES
FRECUENCIA: 60 Hz



CABALLO DE FUERZA (HP) EST. MAX. 10

TENSIÓN: 240 V - 1FASE

REQUISITOS DE PAR DE APRIETE DE LAS ZAPATAS CALIBRE DEL CABLE (PAR DE APRIETE EN LIBRAS-PULG)	
1/4 - 3/8	25
3/8 - 1/2	40
1/2 - 5/8	60
5/8 - 3/4	80

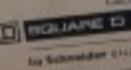
Zapatas adecuadas para conductores de cobre o de aluminio a una temperatura de 60°C y 75°C.

Apriete los tornillos de montaje de las zapatas principales a 30 lb-pulg.
Este desconectador se puede usar en un circuito capaz de suministrar no más de (A) 10 000 A simétricos rms, 240 V ac como máximo cuando está protegido por un interruptor automático o por fusibles clase H o R de 60 A nominales como máximo, o (R) 50 000 A simétricos rms, 240 V ac como máximo cuando está protegido por fusibles clase J o R de 60 A nominales nominales.

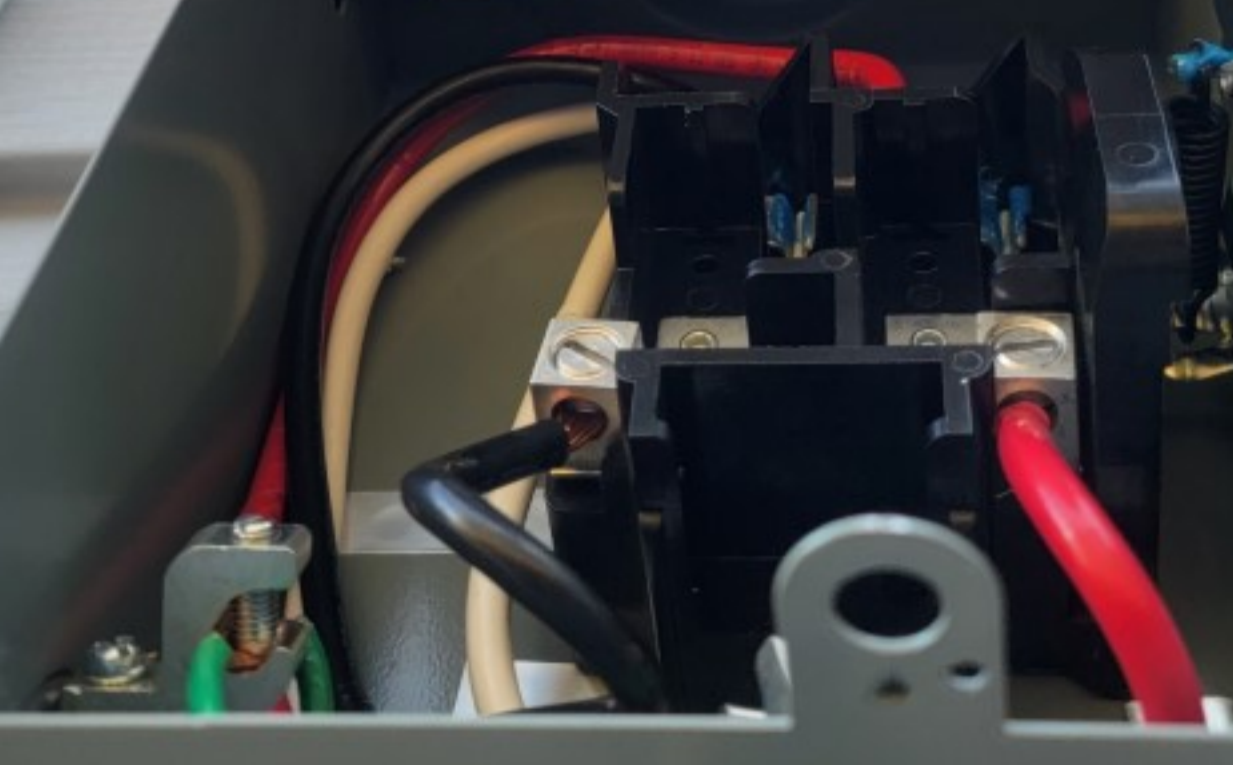
Engrase las superficies de los cojinetes del mecanismo (no las piezas conductoras de corriente) una vez al año.
Cuando es necesario utilizar zapatas de prueba a tierra del equipo o de accesorios, solicite las piezas de catálogo PK307A1.

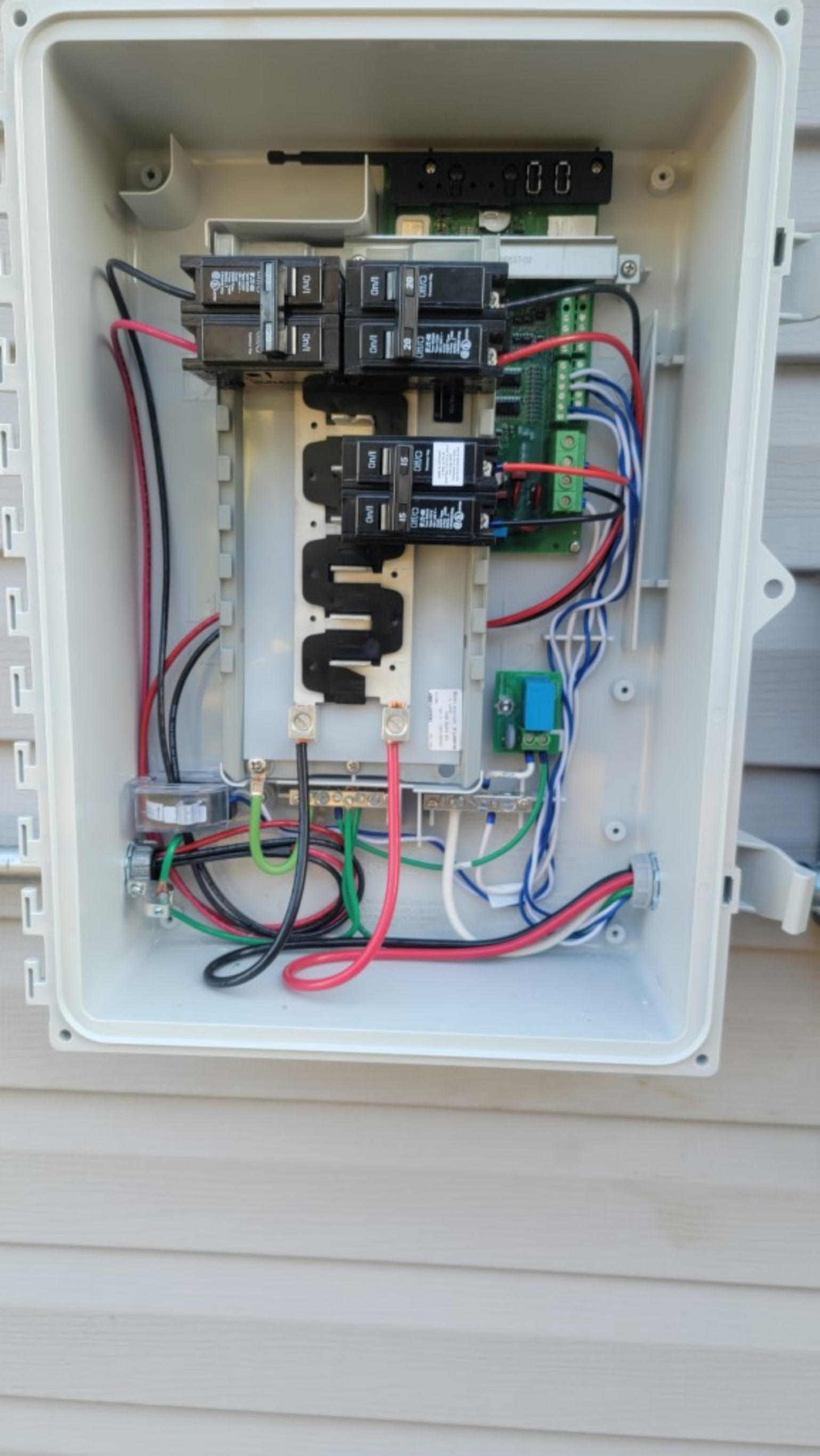
Adecuado para usarse como equipo de accesorios.

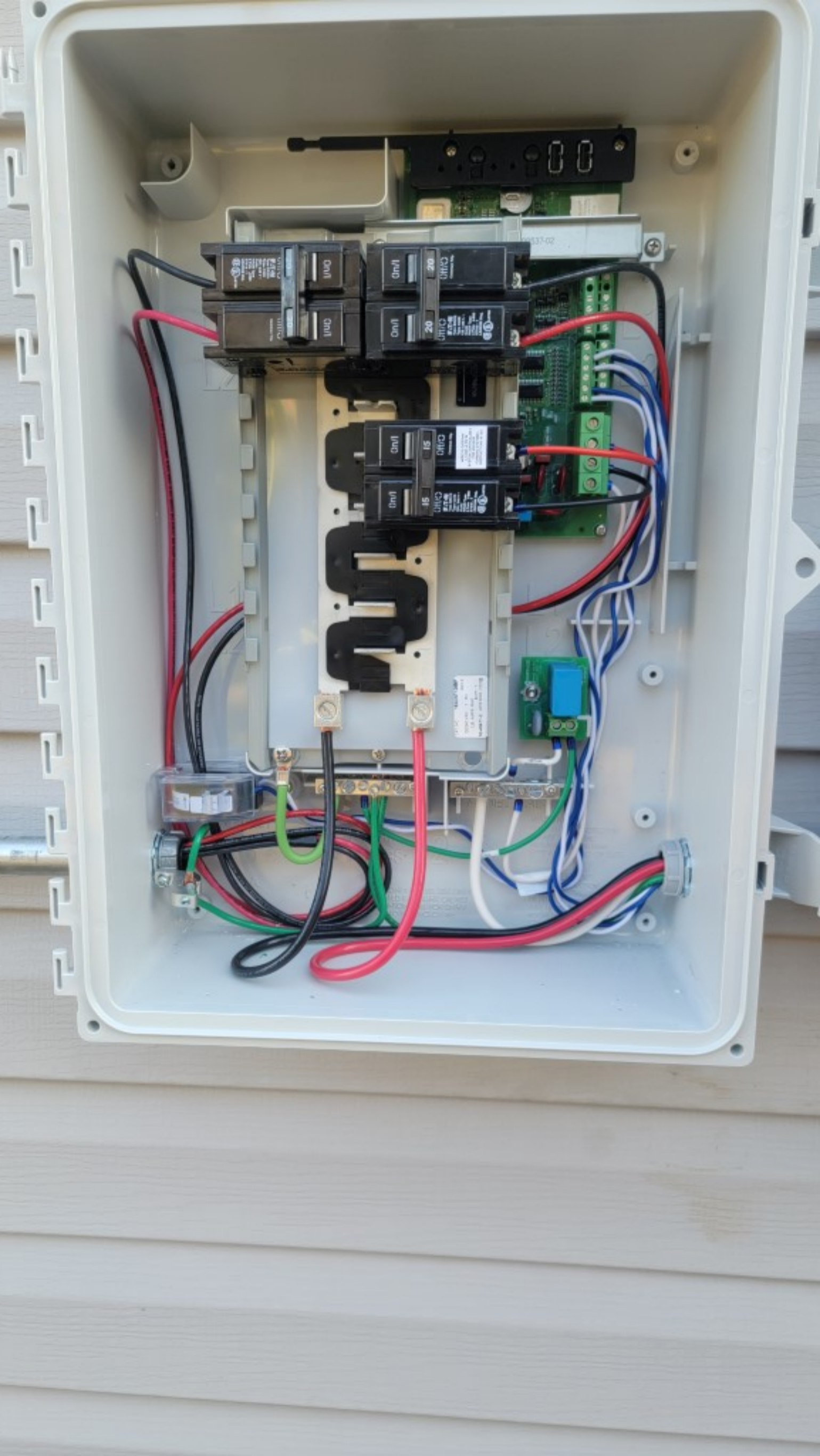
Conjunto de cierre incluido - Solicite los multiplicadores por separado según el tamaño de multiplicador que necesite más abajo			
TORQUE (IN-LBS)	1/4 - 3/8	25	1
TORQUE (IN-LBS)	3/8 - 1/2	40	2
TORQUE (IN-LBS)	1/2 - 5/8	60	3
TORQUE (IN-LBS)	5/8 - 3/4	80	4



10000000







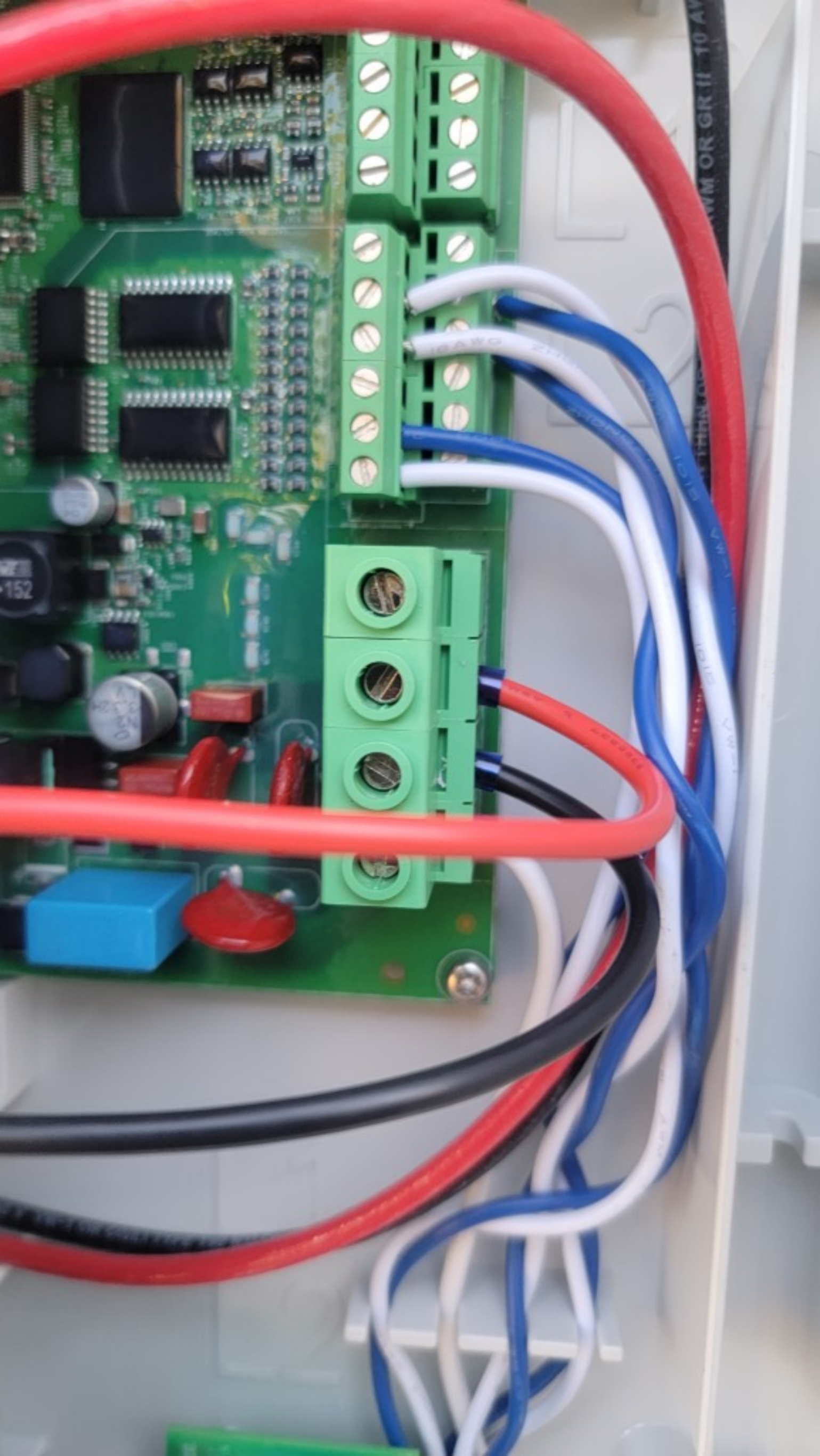
CIRCUIT DIRECTORY
LIST OF CIRCUITS AND DEVICES

1	2	3	4	5	6	7	8	9	10	11	12	13	14	15	16	17	18	19	20	21	22	23	24	25	26	27	28	29	30	31	32	33	34	35	36	37	38	39	40	41	42	43	44	45	46	47	48	49	50	51	52	53	54	55	56	57	58	59	60	61	62	63	64	65	66	67	68	69	70	71	72	73	74	75	76	77	78	79	80	81	82	83	84	85	86	87	88	89	90	91	92	93	94	95	96	97	98	99	100
---	---	---	---	---	---	---	---	---	----	----	----	----	----	----	----	----	----	----	----	----	----	----	----	----	----	----	----	----	----	----	----	----	----	----	----	----	----	----	----	----	----	----	----	----	----	----	----	----	----	----	----	----	----	----	----	----	----	----	----	----	----	----	----	----	----	----	----	----	----	----	----	----	----	----	----	----	----	----	----	----	----	----	----	----	----	----	----	----	----	----	----	----	----	----	----	----	----	----	-----

NO.	DESCRIPTION	WIRE	TERMINALS	REMARKS
1
2
3
4
5
6
7
8
9
10
11
12
13
14
15
16
17
18
19
20
21
22
23
24
25
26
27
28
29
30
31
32
33
34
35
36
37
38
39
40
41
42
43
44
45
46
47
48
49
50
51
52
53
54
55
56
57
58
59
60
61
62
63
64
65
66
67
68
69
70
71
72
73
74
75
76
77
78
79
80
81
82
83
84
85
86
87
88
89
90
91
92
93
94
95
96
97
98
99
100

E.T.N







CAT 120V 30-4

Terminal bar with screws

Terminal bar with screws

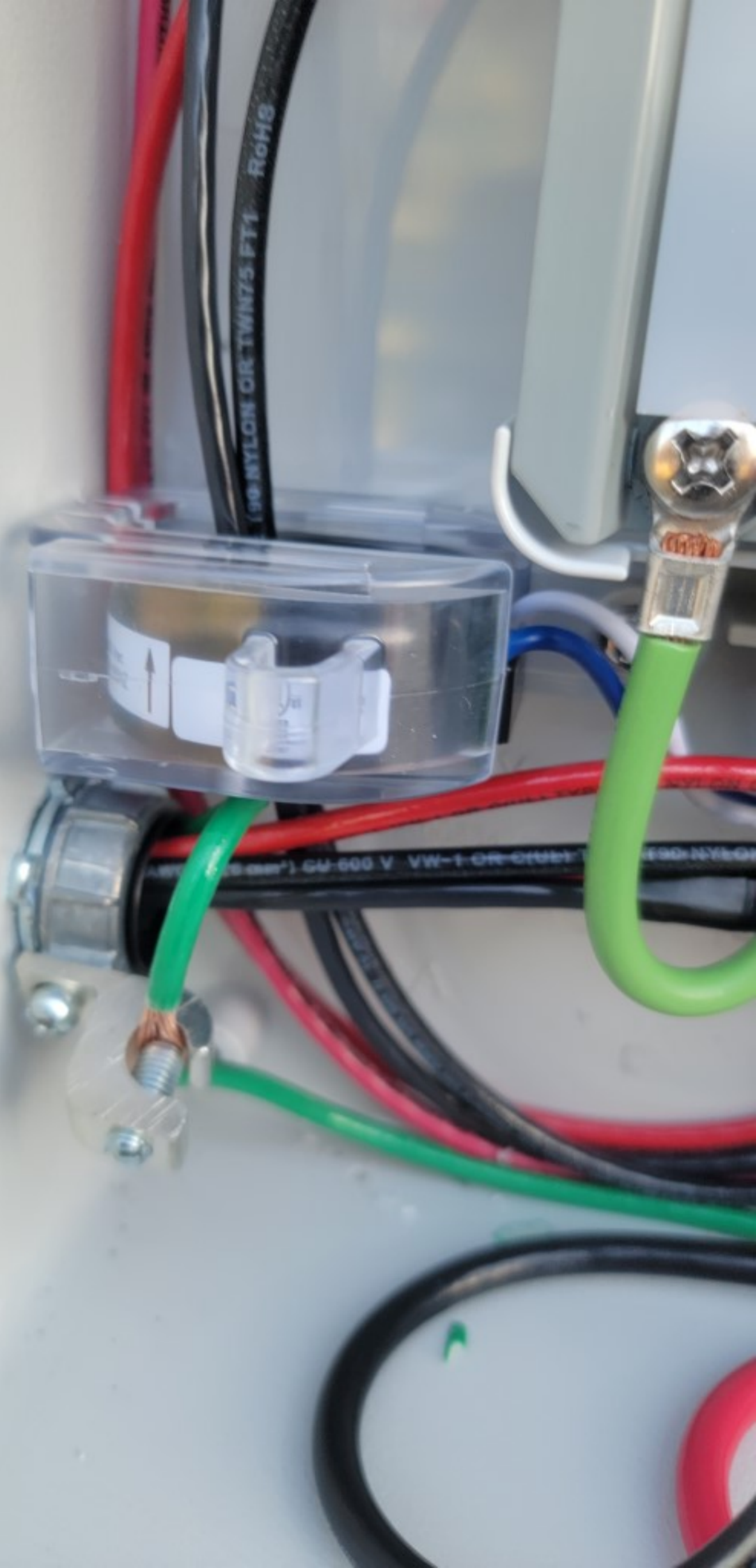
NEUTRAL

L2

...IT HUBS, USE ONLY
...TIGHT, OR WET
...HUBS FOR ENTRY
...THE ENCLOSURE

WAR
EG
GAINST
REPLAC
TYPE AN
125 VAC

DE FEU
AVEC LE
RÉFÉRENCE
125 V



On/1

20

Off/C

EATON

Type BR220

Type C220

120 / 240 V -

Cu/Al

HACR Type

2 Pole J-989

E7819 - T

LR43556 Disj.



On/1

20

Off/C

Common Trip



15

15

Off/0

Common Trip

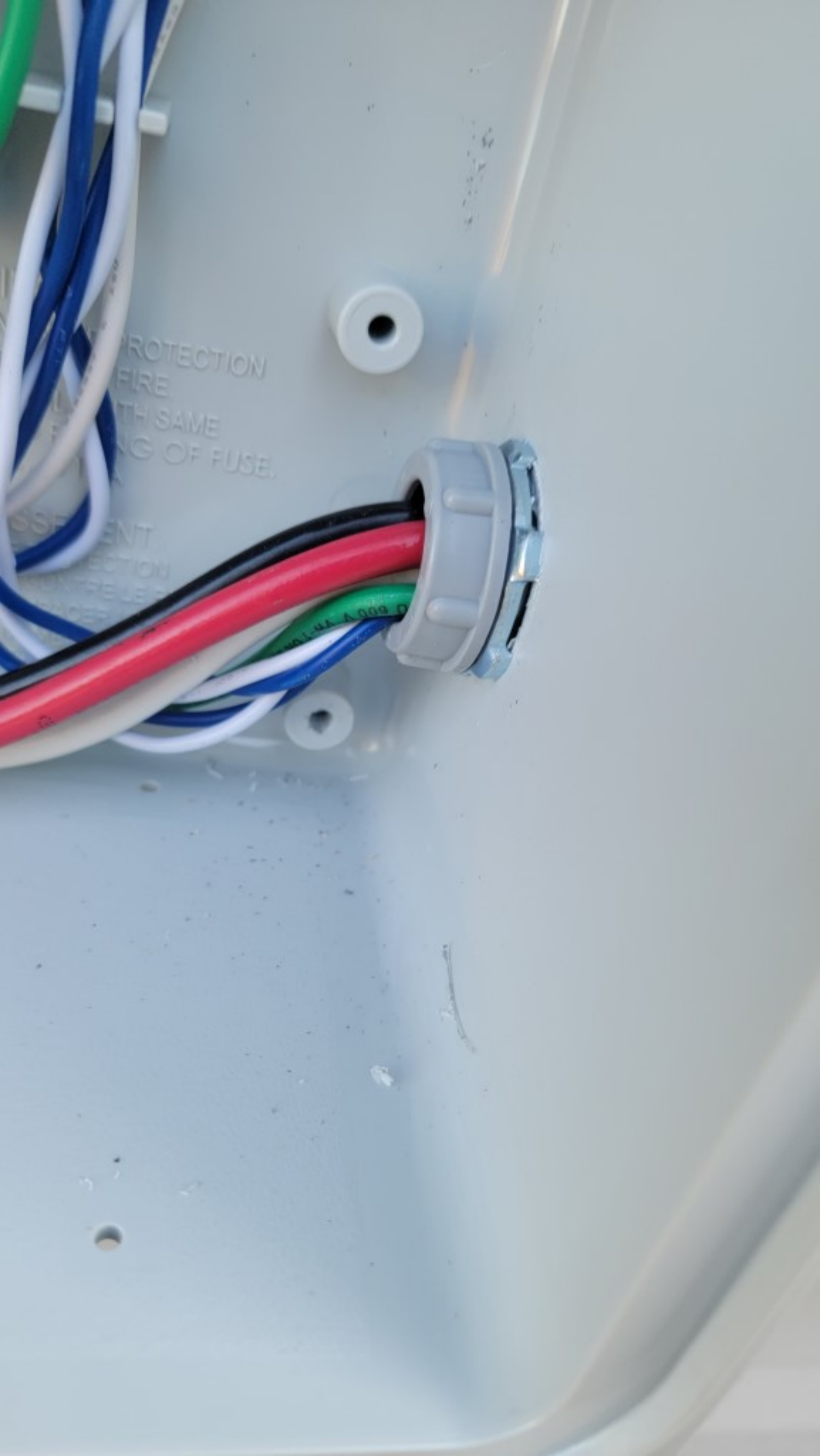
WIRE IQ GATEWAY
L1 AND L2 TO IQ
SYSTEM CONTROLLER 2
FOR IQ8 GRID
FORMING SYSTEMS -
INSTRUCTIONS IN QIG

Off/0

A.T.N

Type BR215
Type C215
120 / 240 V ~
Cu/Al
HACR Type
2 Pole J-969
E7819 - T
LR43556 Defj.

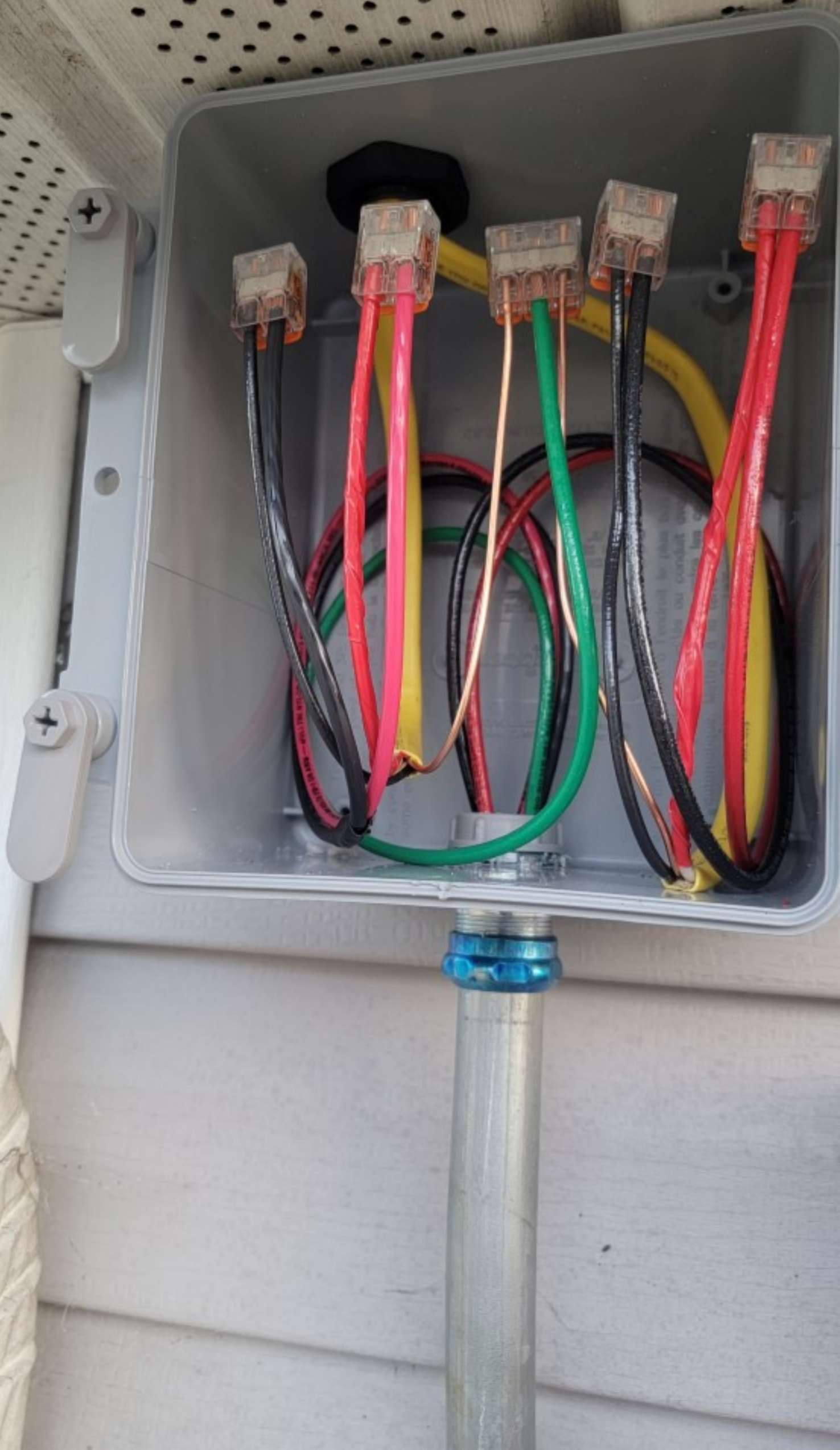


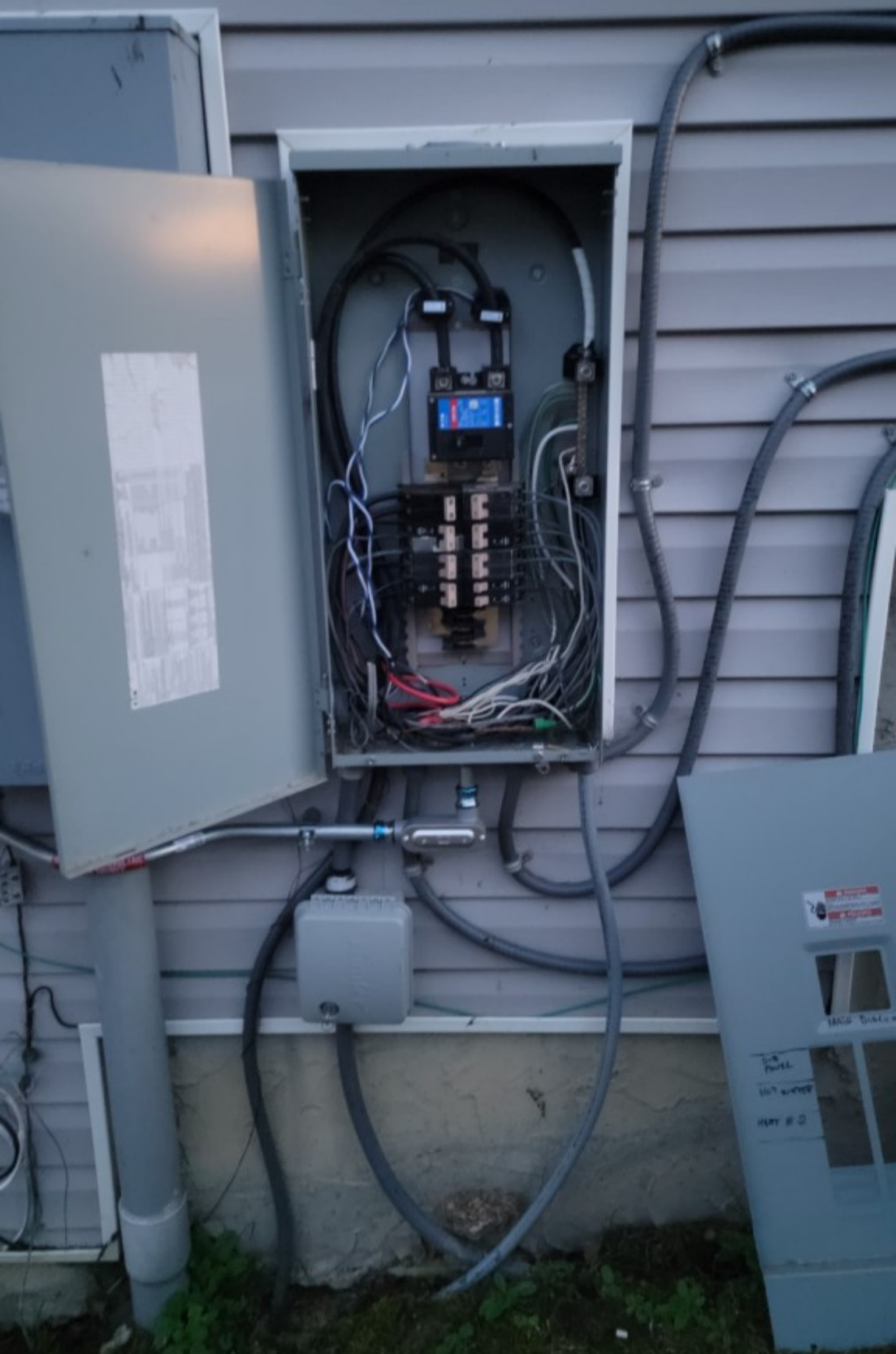


PROTECTION
FIRE
WITH SAME
RATING OF FUSE.

ESSENTIAL
PROTECTION

101-44-1-009 D













GENERAL SAFETY
INSTRUCTIONS FOR
INSTALLATION OF
RATED SWITCHES
AND
CIRCUIT BREAKERS

WARNING
This device is not to be used as a general purpose switch or circuit breaker. It is designed for use in solar photovoltaic (PV) systems only. It is not to be used in applications where it is subjected to short-circuit currents or fault currents in excess of its rated capacity. It is not to be used in applications where it is subjected to ambient temperatures in excess of 40°C (104°F). It is not to be used in applications where it is subjected to vibration or shock in excess of its rated capacity. It is not to be used in applications where it is subjected to corrosive or flammable atmospheres. It is not to be used in applications where it is subjected to direct sunlight or other sources of heat. It is not to be used in applications where it is subjected to moisture or other environmental conditions that may affect its performance. It is not to be used in applications where it is subjected to mechanical stress or strain in excess of its rated capacity. It is not to be used in applications where it is subjected to electrical stress or strain in excess of its rated capacity. It is not to be used in applications where it is subjected to electrical transients in excess of its rated capacity. It is not to be used in applications where it is subjected to electrical noise in excess of its rated capacity. It is not to be used in applications where it is subjected to electrical interference in excess of its rated capacity. It is not to be used in applications where it is subjected to electrical harmonics in excess of its rated capacity. It is not to be used in applications where it is subjected to electrical surges in excess of its rated capacity. It is not to be used in applications where it is subjected to electrical spikes in excess of its rated capacity. It is not to be used in applications where it is subjected to electrical dips in excess of its rated capacity. It is not to be used in applications where it is subjected to electrical sags in excess of its rated capacity. It is not to be used in applications where it is subjected to electrical flicker in excess of its rated capacity. It is not to be used in applications where it is subjected to electrical dimming in excess of its rated capacity. It is not to be used in applications where it is subjected to electrical modulation in excess of its rated capacity. It is not to be used in applications where it is subjected to electrical distortion in excess of its rated capacity. It is not to be used in applications where it is subjected to electrical clipping in excess of its rated capacity. It is not to be used in applications where it is subjected to electrical truncation in excess of its rated capacity. It is not to be used in applications where it is subjected to electrical saturation in excess of its rated capacity. It is not to be used in applications where it is subjected to electrical clipping in excess of its rated capacity. It is not to be used in applications where it is subjected to electrical truncation in excess of its rated capacity. It is not to be used in applications where it is subjected to electrical saturation in excess of its rated capacity.

**DISCONNECT THE SYSTEM
AC DISCONNECT**

WARNING

**RAPID SHUTDOWN SWITCH
FOR SOLAR PV SYSTEM**



 GENERAL DUTY
SAFETY SWITCH
INTERRUPTOR DE
SECUNDARIO DE
MANNESMANN
D & A
DIA 001 - 71

⚠ DANGER / PELIGRO

 **WARNING**
ELECTRIC SHOCK HAZARD
DO NOT TOUCH TERMINALS
TERMINALS ON BOTH LINE AND
LOAD SIDES MAY BE ENERGIZED
IN THE OPEN POSITION

PHOTOVOLTAIC SYSTEM
AC DISCONNECT

OPERATING VOLTAGE **240** VOLTS
CIRCUIT CURRENT **30.25** AMPS

**RAPID SHUTDOWN SWITCH
FOR SOLAR PV SYSTEM**

PHOTOVOLTAIC SYSTEM
AC DISCONNECT

OPERATING VOLTAGE **240** VOLTS
CIRCUIT CURRENT **30.25** AMPS

WARNING
ELECTRIC SHOCK HAZARD
DO NOT TOUCH TERMINALS
TERMINALS ON BOTH LINE AND
LOAD SIDES MAY BE ENERGIZED
IN THE OPEN POSITION

**RAPID SHUTDOWN SWITCH
FOR SOLAR PV SYSTEM**

