

**REC** REC Alpha Black Series  
 REC375AA Black  
 Serial Number: FBB-4009216575

Phone: +65 6465 8228  
 www.recgroup.com

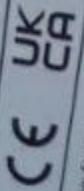
Power Output (Praksa) 375 W  
 Weight Class Rating 0/+5 W  
 Power Protection Tolerance +/- 3%  
 Rated Voltage (Voltage) 37.8 V  
 Rated Current (Arus) 9.94 A  
 Open Circuit Voltage (Voc) (+/- 3%) 44.2 V  
 Short Circuit Current (Isc) (+/- 3%) 10.58 A  
 Maximum System Voltage (Vsys) 1000 V  
 Maximum Series Fuse (DC) (UL) 25 A  
 Design Load +4666 / 2666 PA\*  
 Maximum Test Load 25 A  
 \*Measured at STC 1000 W/m<sup>2</sup> 25°C cell temp 25°C



Complies to  
 UL Std. 9175-1-9  
 CUL Std. 9175-1-9  
 Interlock  
 3017724  
 \*UL File Rating Type 2\*

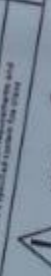


\* IEC 61734  
 \* IEC 61730



Manufactured 30.09.2021

The information indicated on this product is subject to change without notice.



Warning electrical hazard. The module produces electricity when exposed to light.  
**CAUTION: DO NOT DISCONNECT UNDER LOAD**  
 Avertissement: Risques de choc électrique. Ce module génère de l'électricité lorsqu'il est exposé à la lumière.  
**ATTENTION: NE PAS DECONNECTER SOUS TENSION**  
 For more information, see link: [www.recgroup.com](http://www.recgroup.com)  
 Made Singapore by REC SOLAR PTE. LTD.  
 28 JALAN SOUTH AFRICAN ST. SINGAPORE 037312 SINGAPORE  
 REC Solar Contact: REC Solar PTE. LTD. Singapore 037312 SINGAPORE  
 For other regions see [www.recgroup.com/contact](http://www.recgroup.com/contact)



REC375AA Black  
 FBB-4009216575





























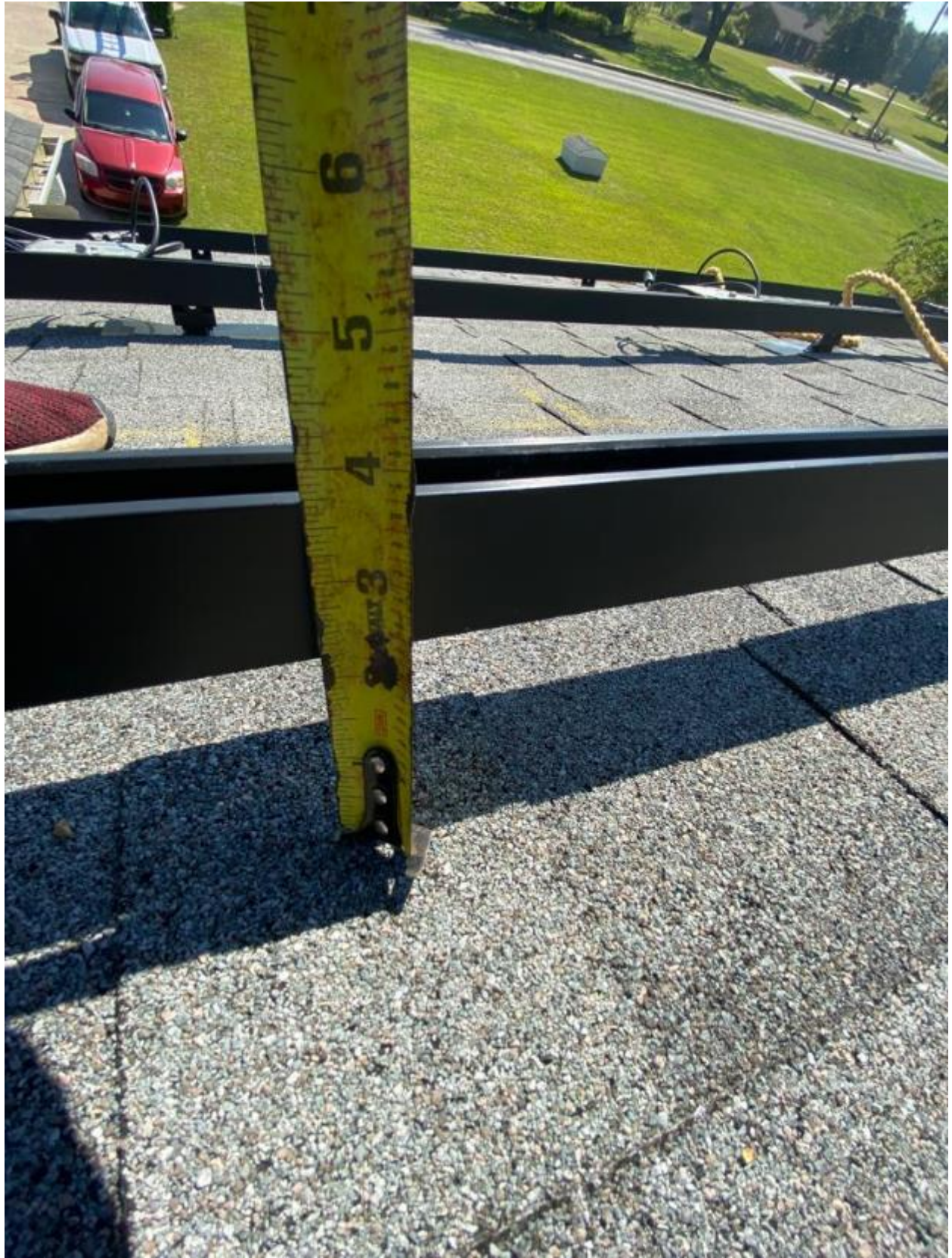


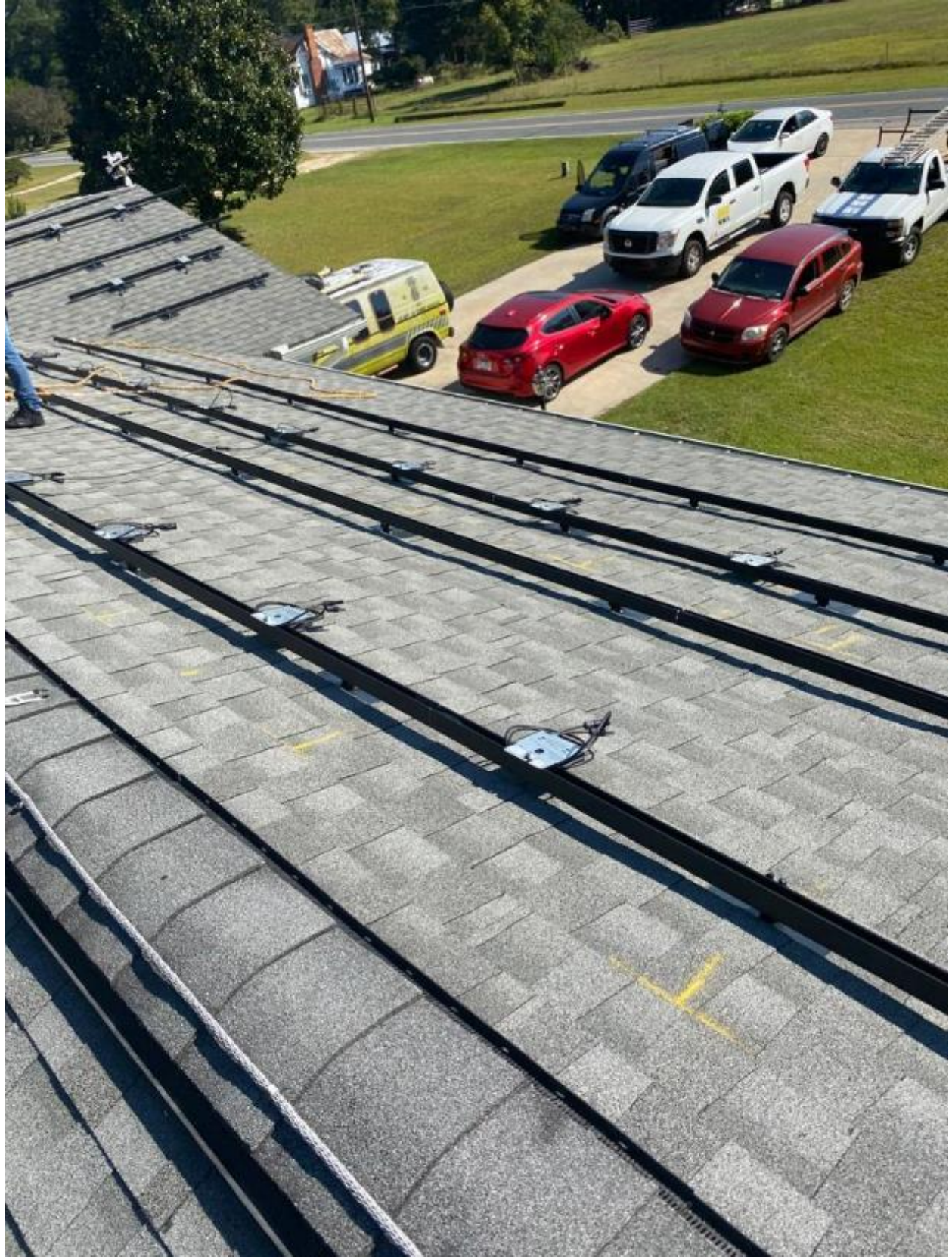


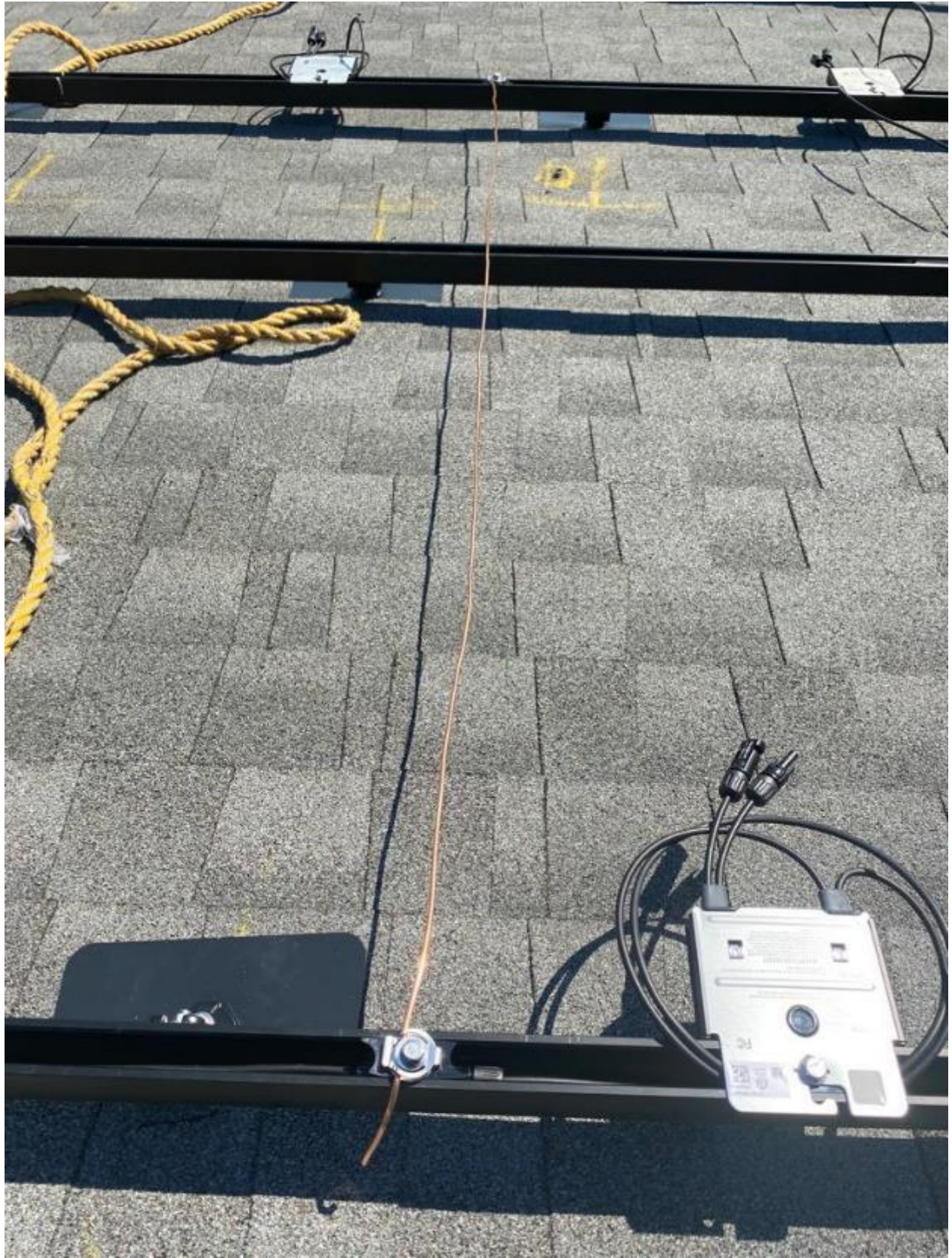




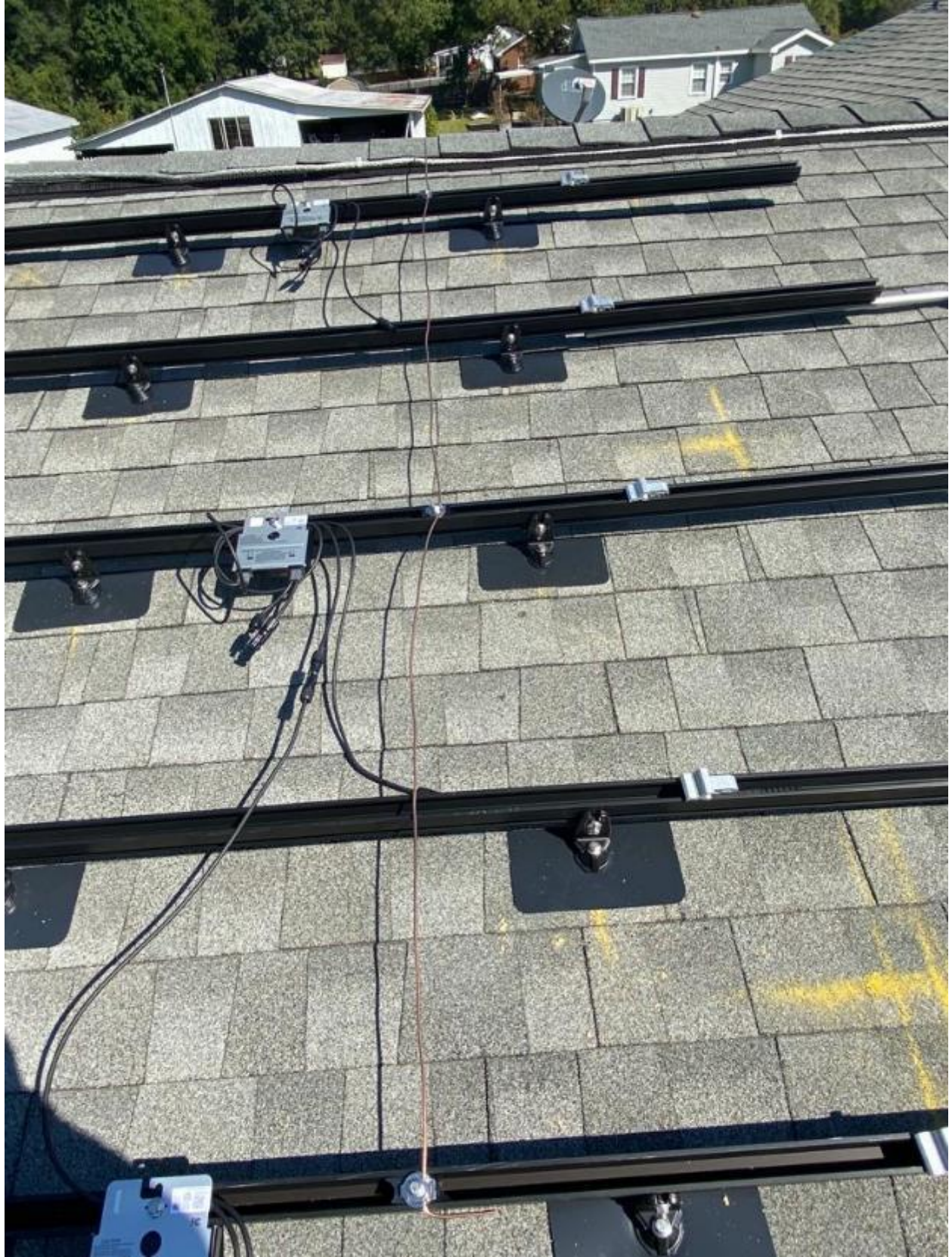


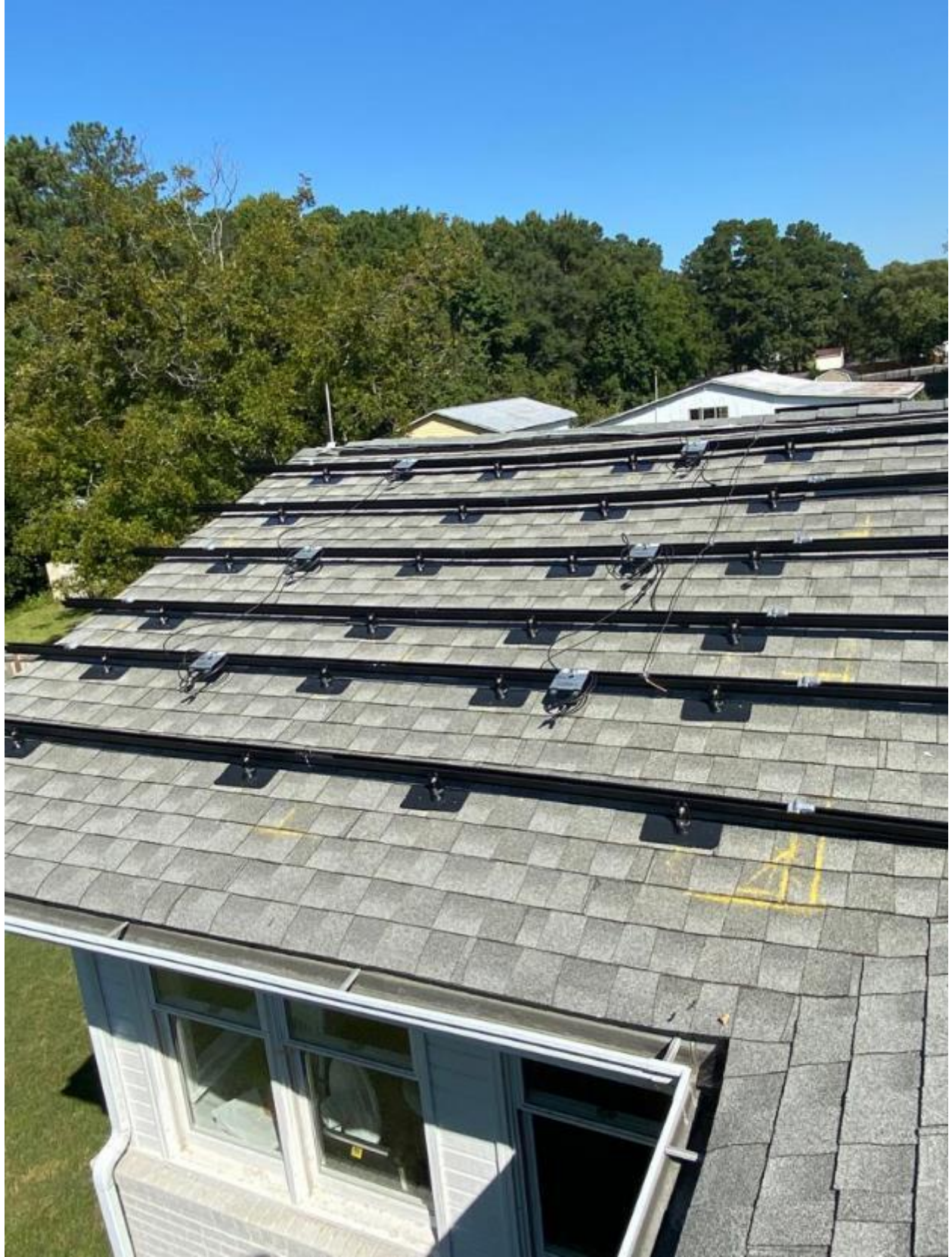








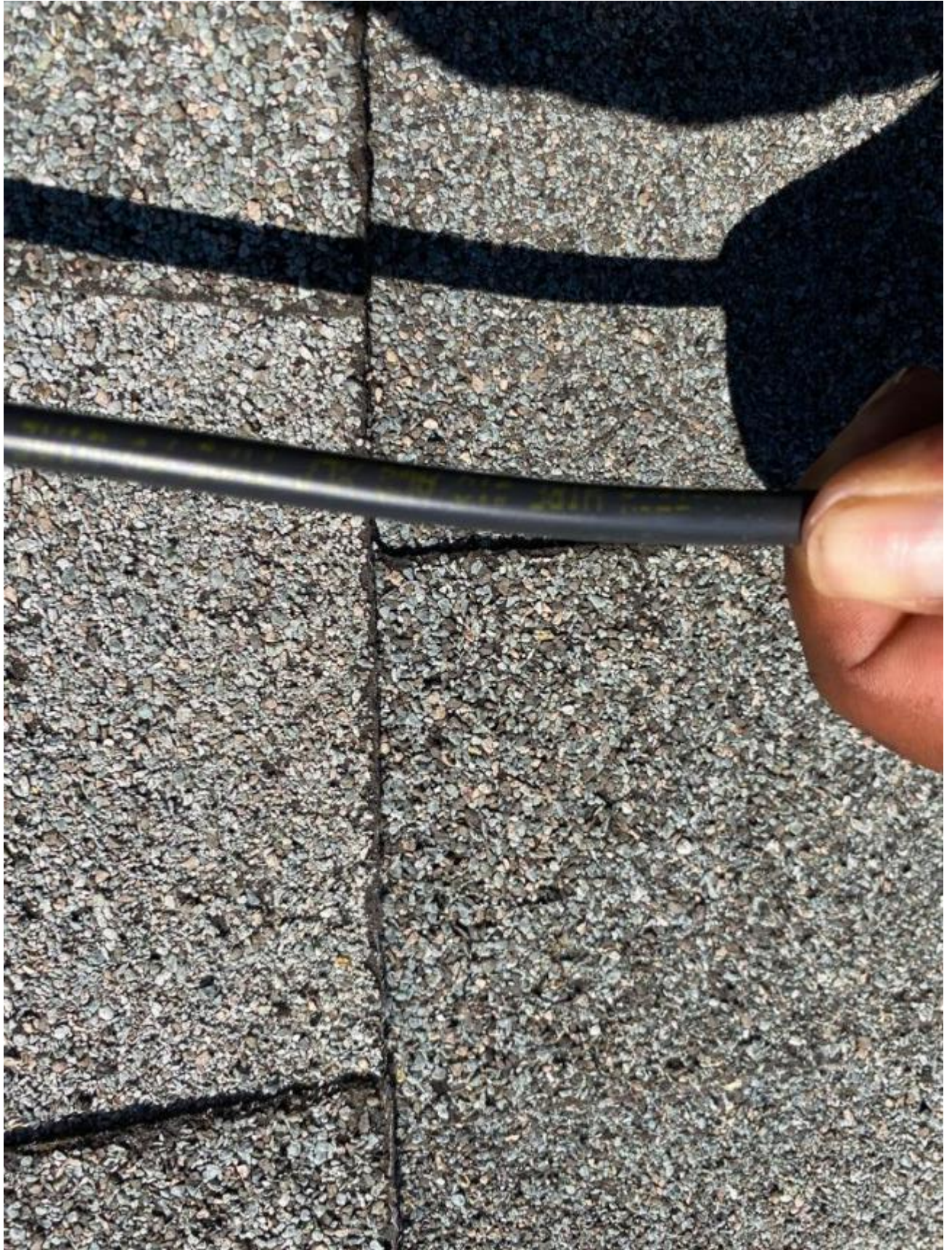


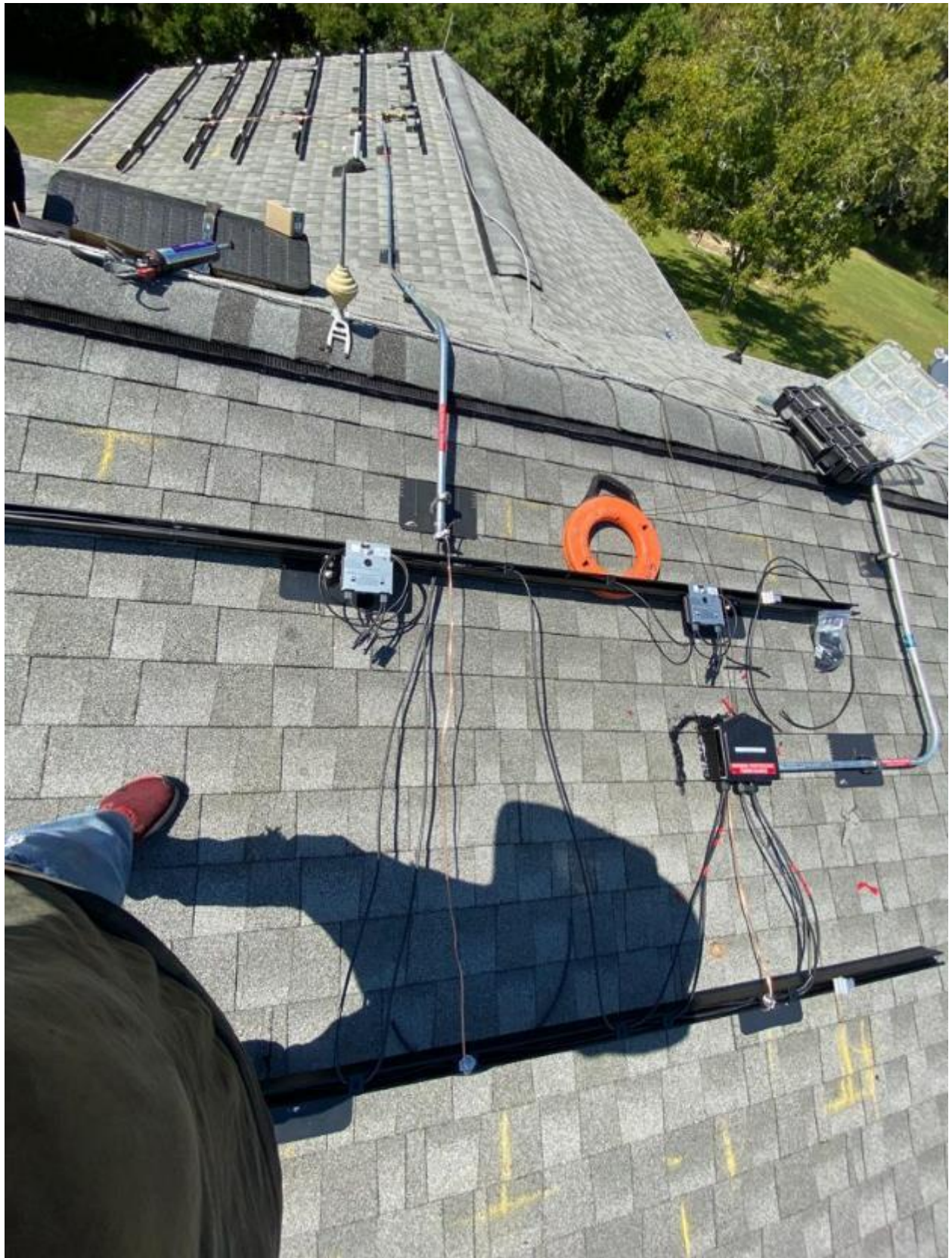






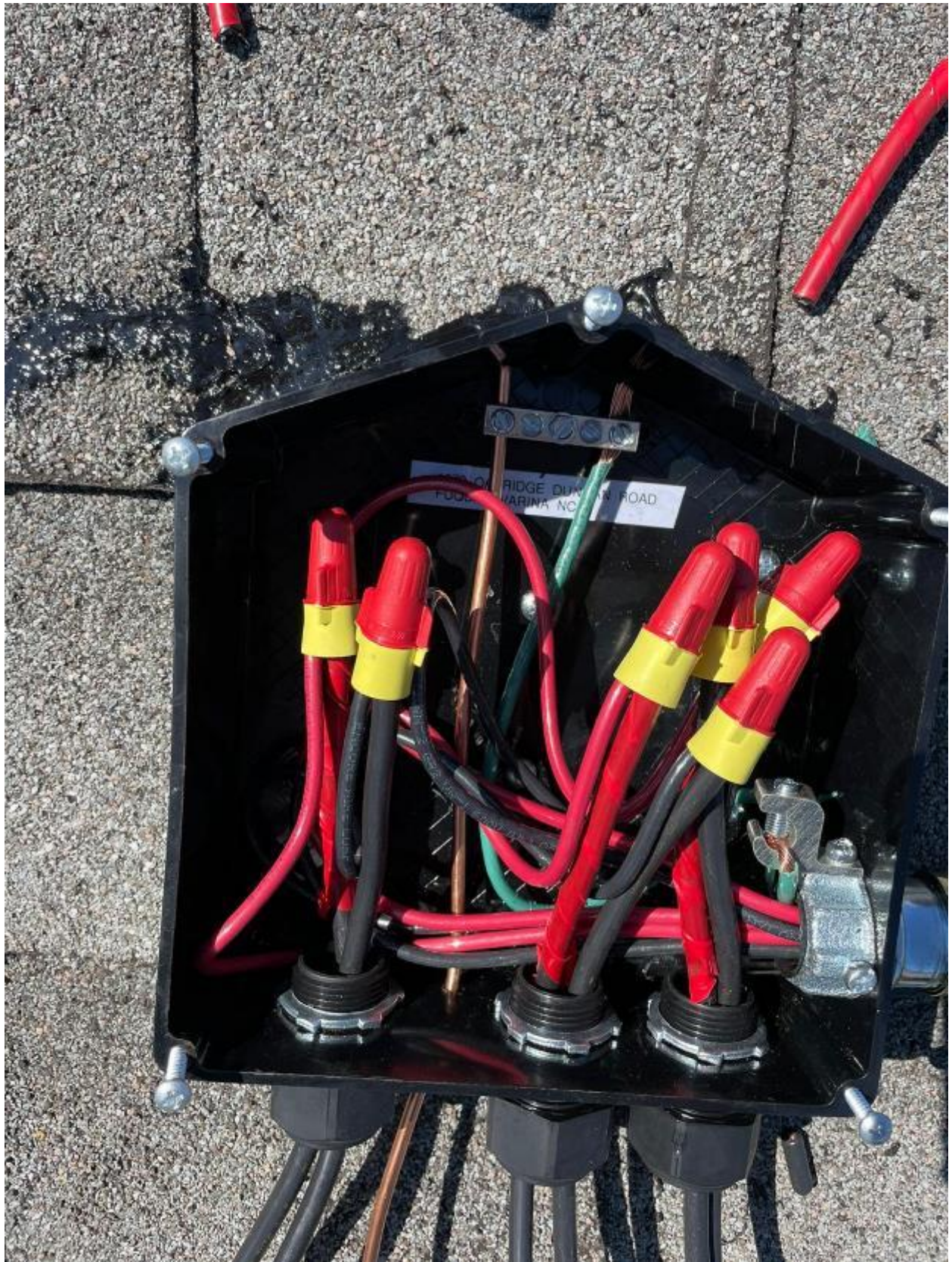








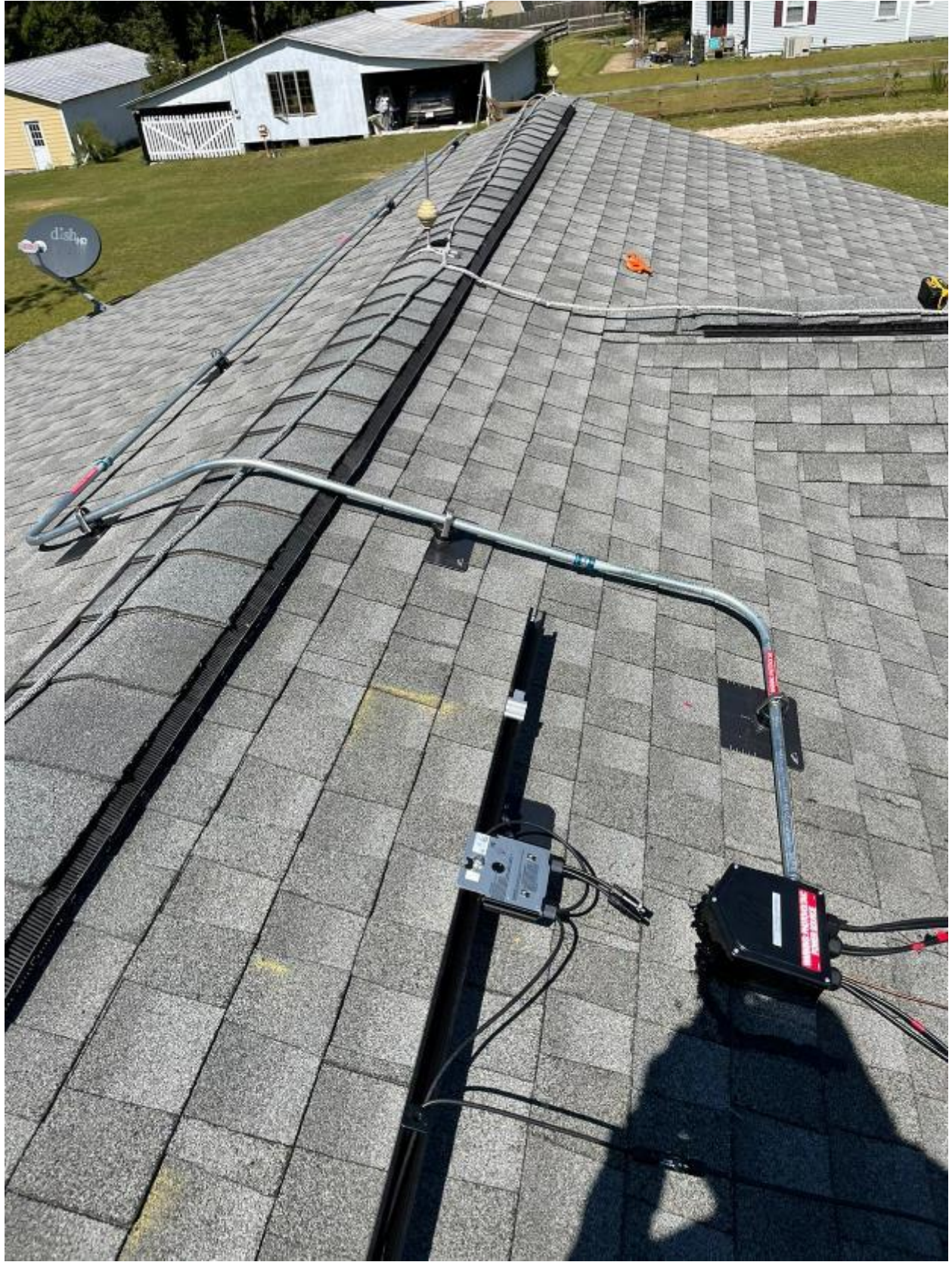










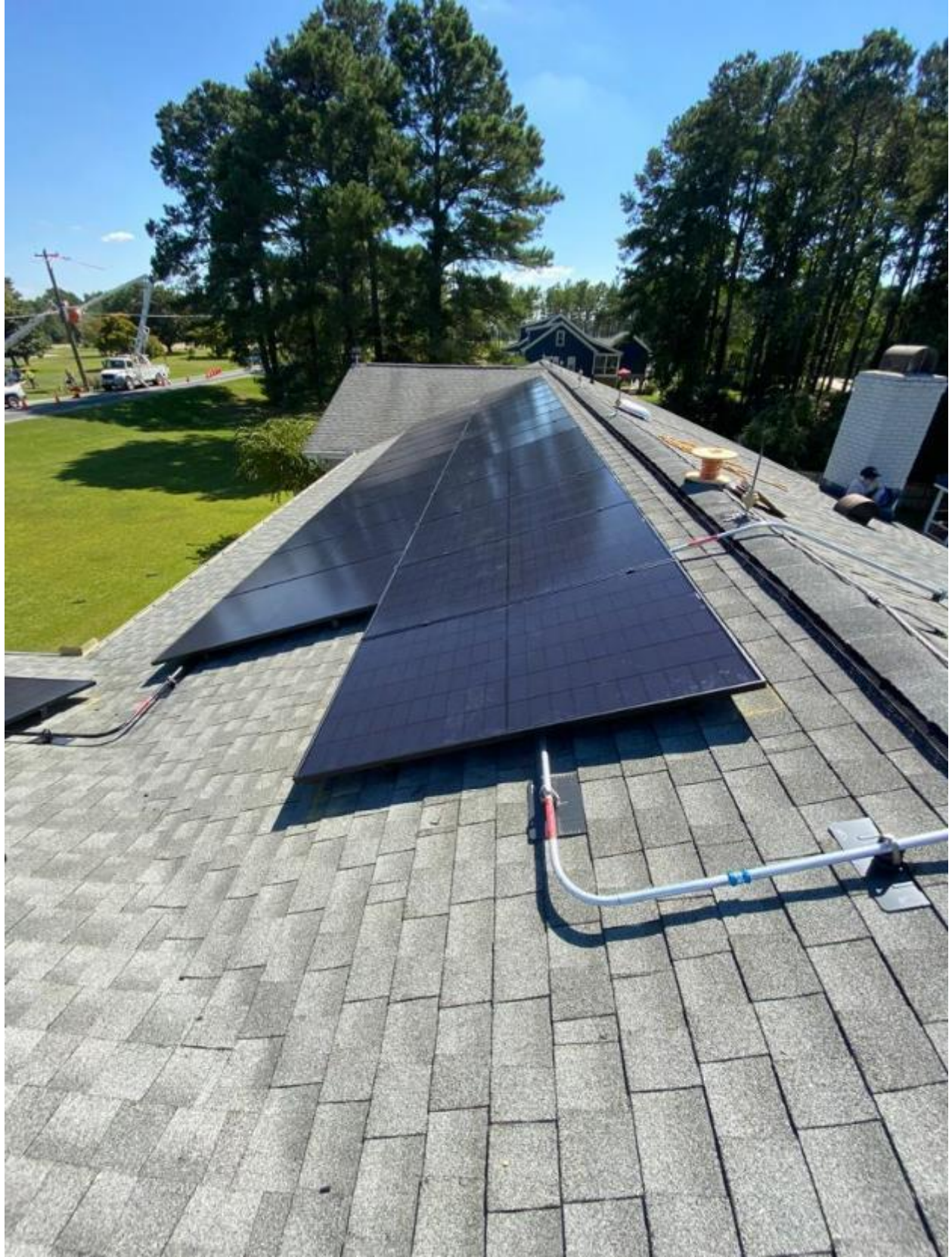




















**⚠ WARNING**  
ELECTRIC SHOCK HAZARD  
TERMINALS ON THE LINE AND  
LOAD SIDES MAY BE ENERGIZED  
IN THE OPEN POSITION

**⚠ WARNING**  
DUAL POWER SUPPLY  
SOURCES: UTILITY GRID AND  
PV SOLAR ELECTRIC SYSTEM

SOLAR AC DISCONNECT LOCATED AT  
NORTH SIDE WALL OF THE HOUSE  
BESIDE THE UTILITY METER

PHOTOVOLTAIC POWER SOURCE  
OPERATING AC VOLTAGE 240 V  
MAXIMUM OPERATING  
AC OUTPUT CURRENT 47.5 A

**⚠ WARNING**  
THIS EQUIPMENT FED BY MULTIPLE  
SOURCES. TOTAL RATING OF ALL  
OVERCURRENT DEVICES, EXCLUDING  
MAIN SUPPLY OVERCURRENT  
DEVICE, SHALL NOT EXCEED  
AMPACITY OF BUSBAR.

**⚠ WARNING**  
TURN OFF PHOTOVOLTAIC  
AC DISCONNECT PRIOR TO  
WORKING INSIDE PANEL

