







CAUTION
HOT SURFACES-TO REDUCE THE RISK OF BURNS-DO NOT TOUCH. PHOTOVOLTAIC ARRAY IS EXPOSED TO LIGHT. IT SUPPLIES A DC VOLTAGE TO EQUIPMENT. COVER PV MODULE WITH OPAQUE MATERIAL BEFORE CONNECTING DURING FAULT. ZERO CURRENT IS SOURCE.

WARNING ELECTRICAL SHOCK HAZARD. SYSTEM ARE UNGROUND AND MAY BE ENERGIZED.

AVERTISSEMENT
RISQUE DE CHOC ÉLECTRIQUE. LE PHOTOVOLTAÏQUE EXPOSE À LA LUMIÈRE, UNE TENSION CC EST PRÉSENT. PAS TOUCHER, AFIN DE RÉDUIRE LES RISQUES DE RETOUR INÉDIT CAS DE DÉFAILLANCE TOUJOURS NEUTRE.

THE DC CONDUCTORS OF THIS PHOTOVOLTAIC SYSTEM ARE UNGROUND AND MAY BE ENERGIZED.

DISCONNECTING THIS OPTIMIZER TO DC ARRAY BY CONVERTER.

FC

Do Not Remove 1550265-0A

QR Code

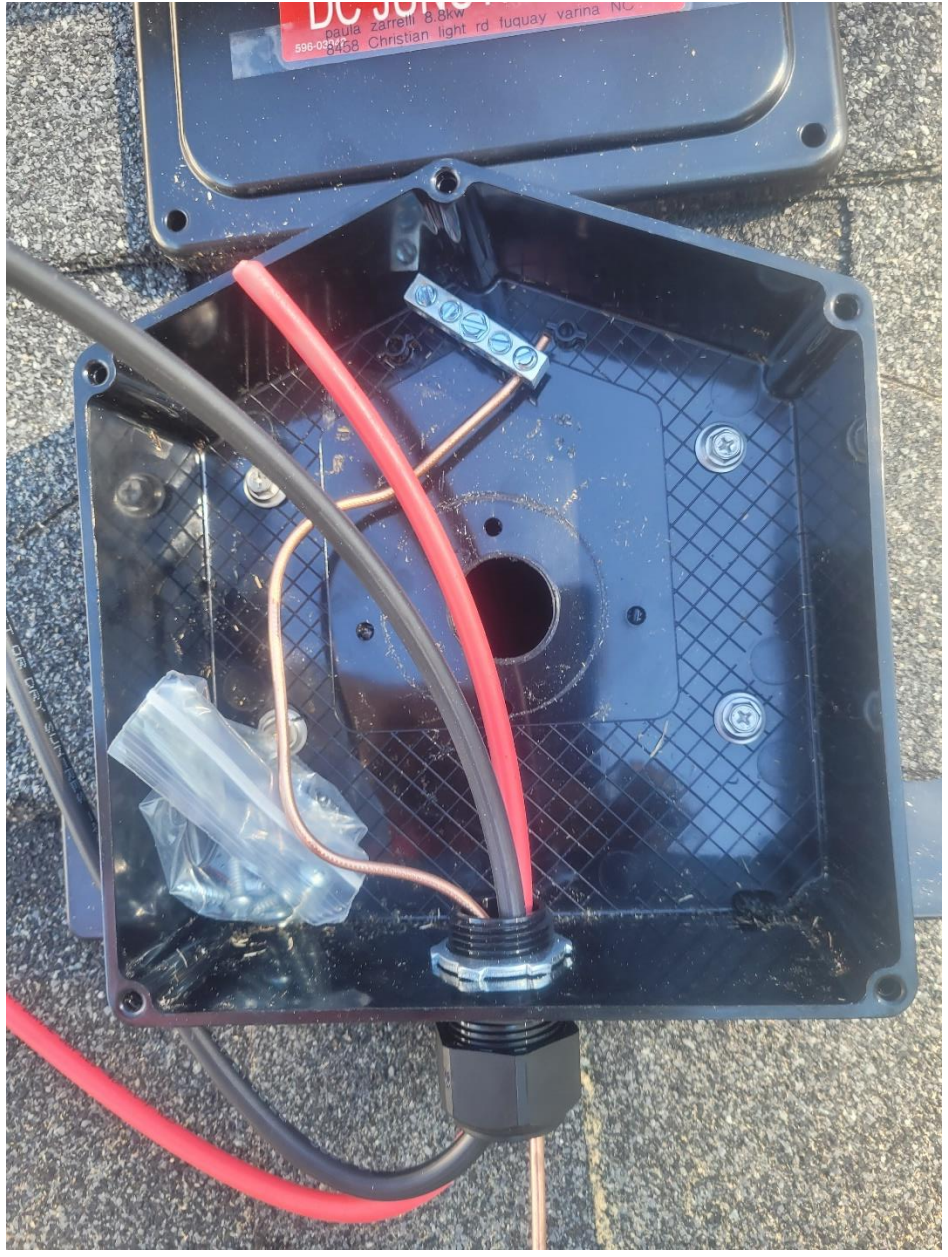
1550265-0A

DC Res -40°C VW-1 HomeLin

1-WA





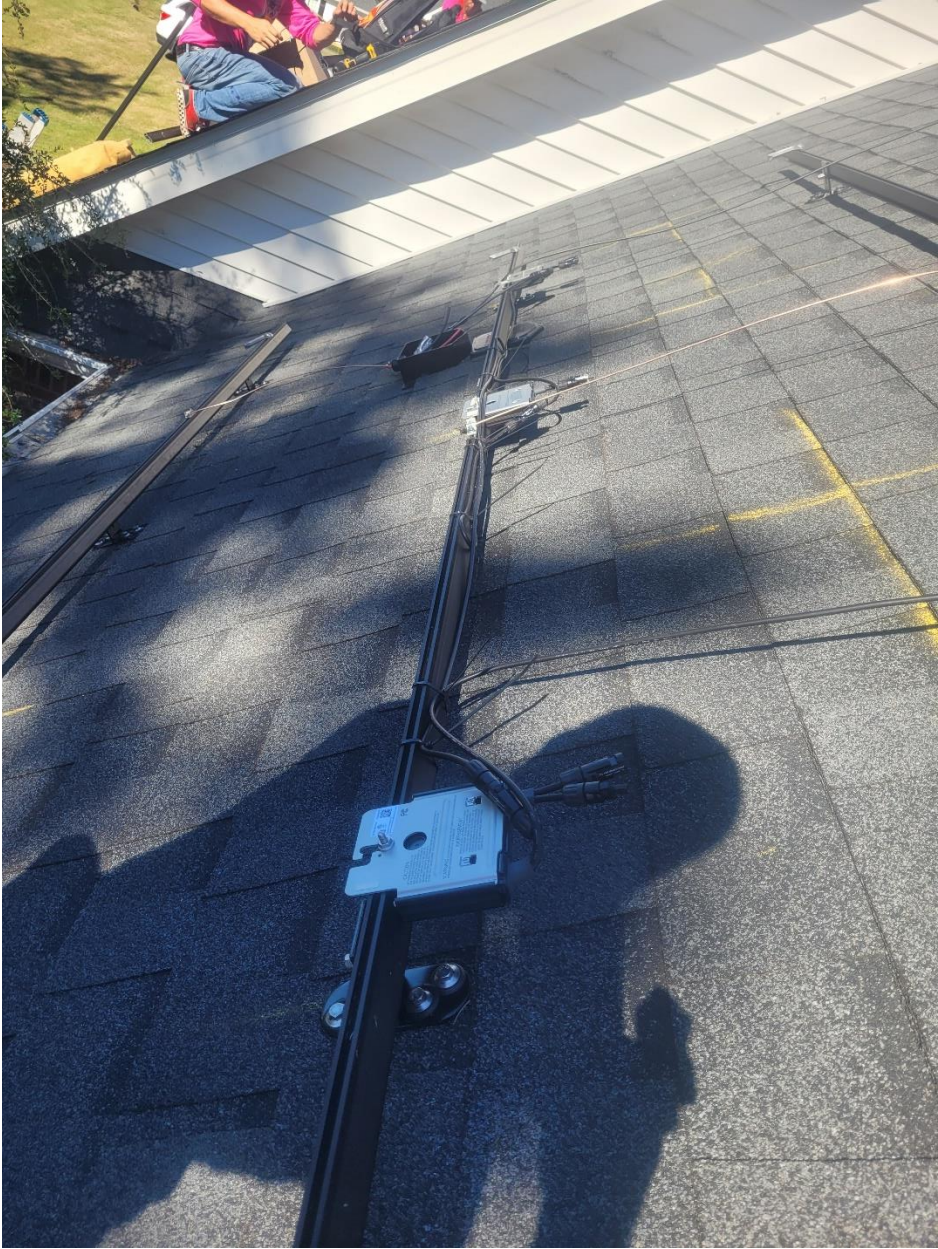


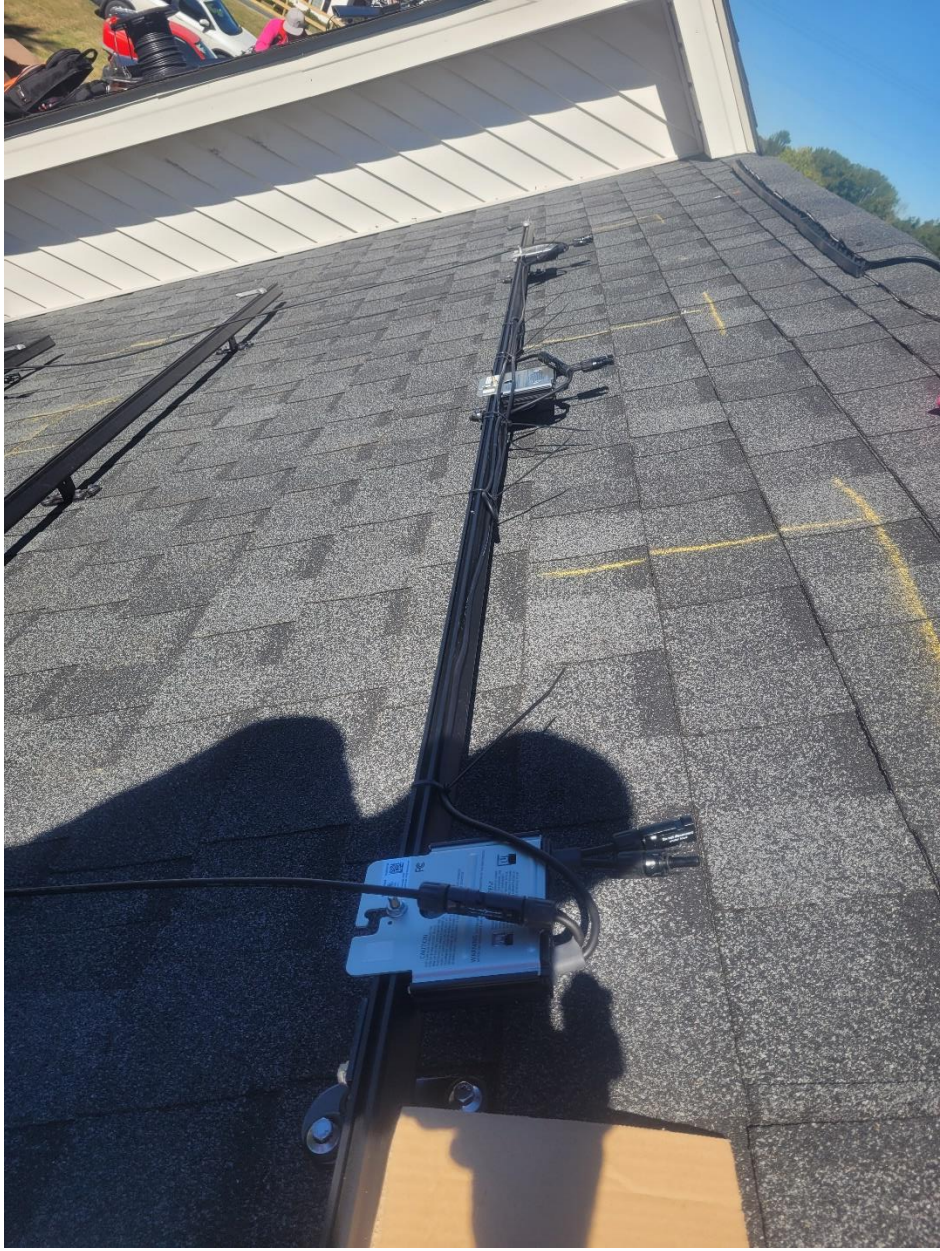




















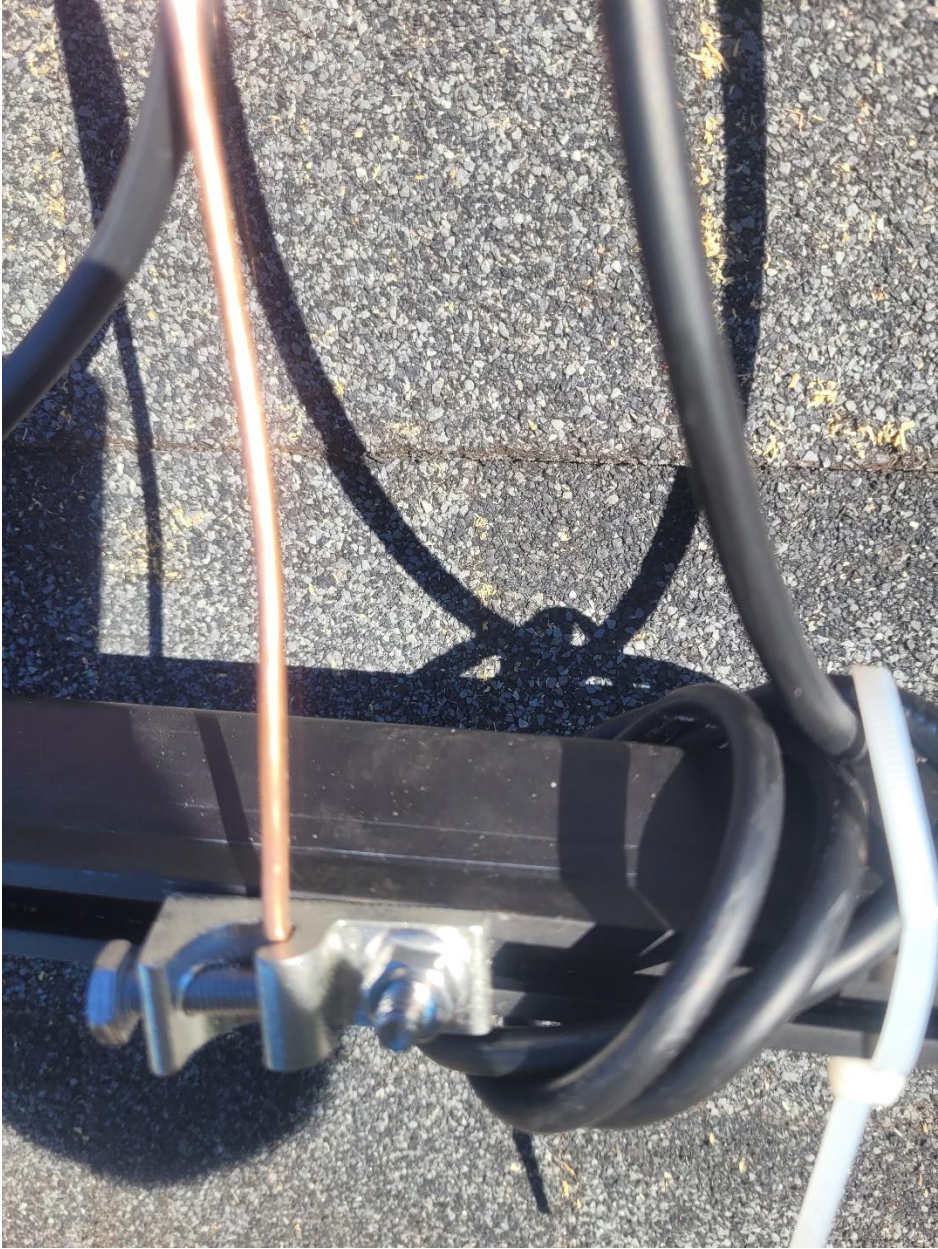
WARNING ELECTRIC SHOCK HAZARD. THE DC CONDUCTORS OF THIS PHOTOVOLTAIC SYSTEM ARE UNGROUNDING AND MAY BE ENERGIZED.

CAUTION HOT SURFACES TO REDUCE THE RISK OF BURNS, DO NOT TOUCH PHOTOVOLTAIC ARRAY IS EXPOSED TO LIGHT. IT SUPPLIES A DC VOLTAGE TO EQUIPMENT. COVER PV MODULE WITH OPAQUE MATERIAL BEFORE CONNECTING OR DISCONNECTING THIS OPTIMIZER. DURING FAULT, ZERO CURRENT IS SOURCED INTO DC ARRAY BY CONVERTER.

FC

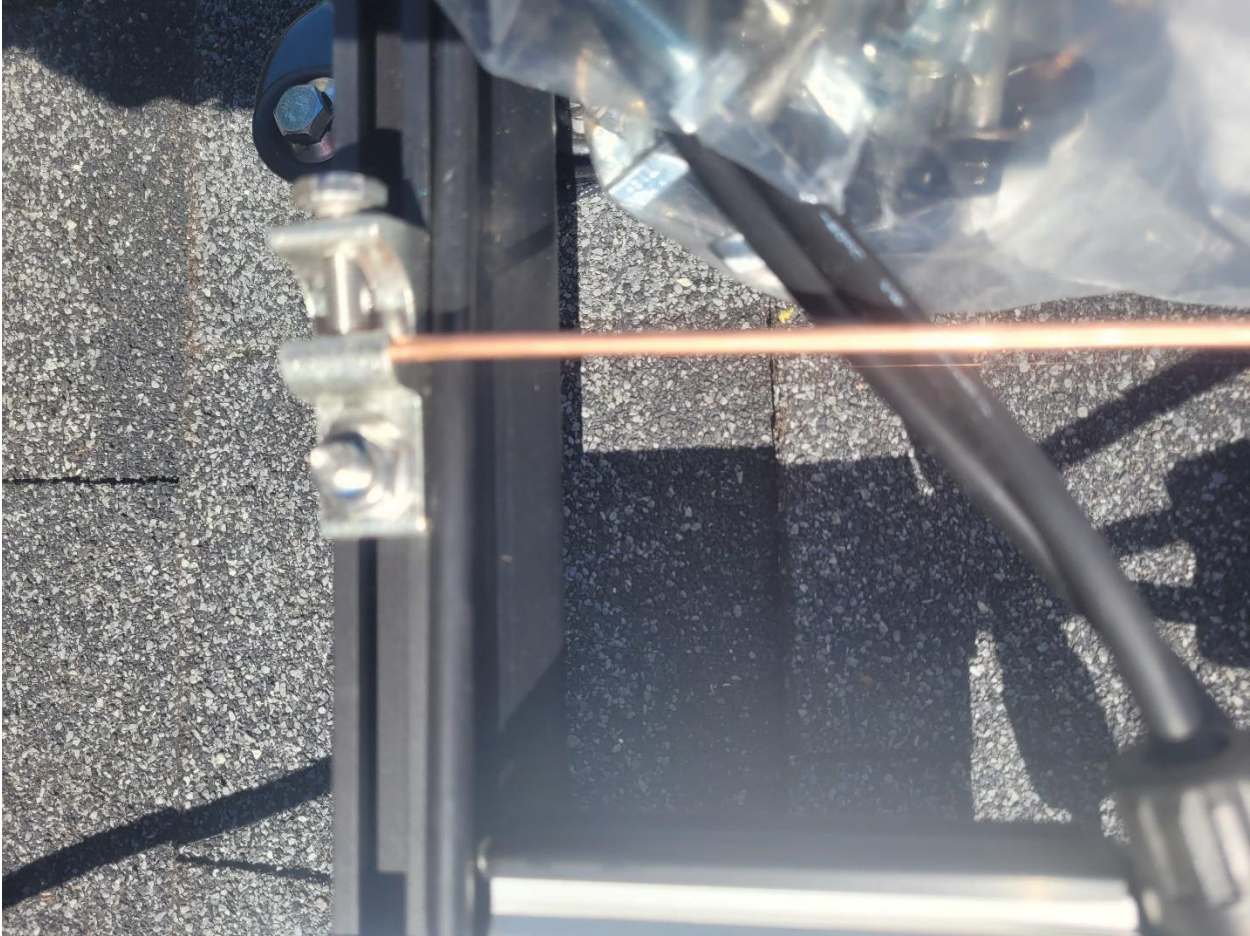
Do Not Remove
1557320A-00
13 000 000
WARNING: EXPOSED SURFACE (E18123) Multiple/Component

AVERTISSEMENT RISQUE DE CHOC ELECTRIQUE. QUAND LE CHAMP PHOTOVOLTAIQUE EST EXPOSE A LA LUMIERE, UNE TENSION CC EST FOURNIE A CET EQUIPEMENT. SURFACES CHAUDES. NE PAS TOUCHER. AFIN DE REDUIRE LES RISQUES DE BRULURES, LE COURANT DE RETOUR INJECTE PAR LE CONVERTISSEUR EN CAS DE DEFALANCE DANS LE MODULE PV EST TOUJOURS NUL.

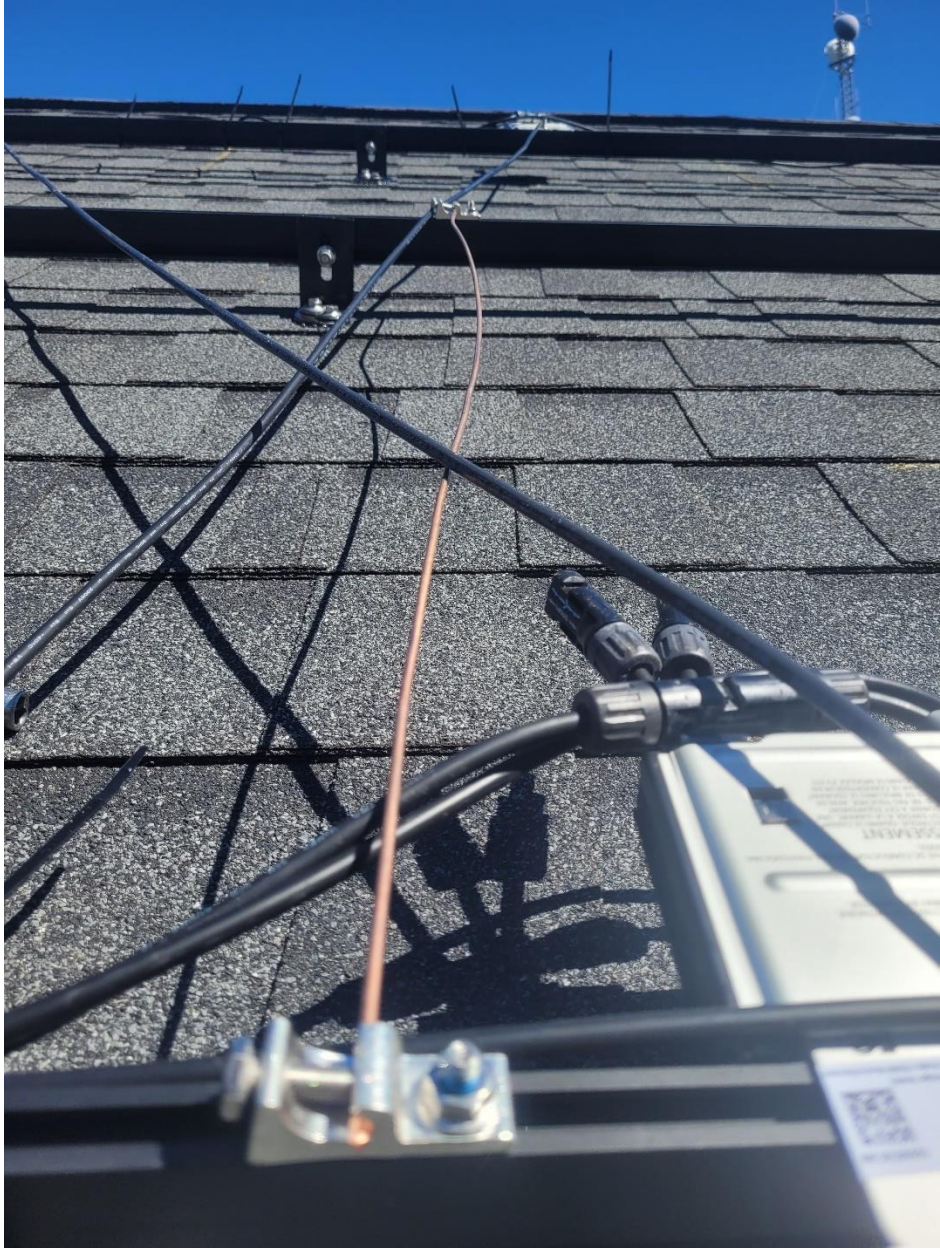


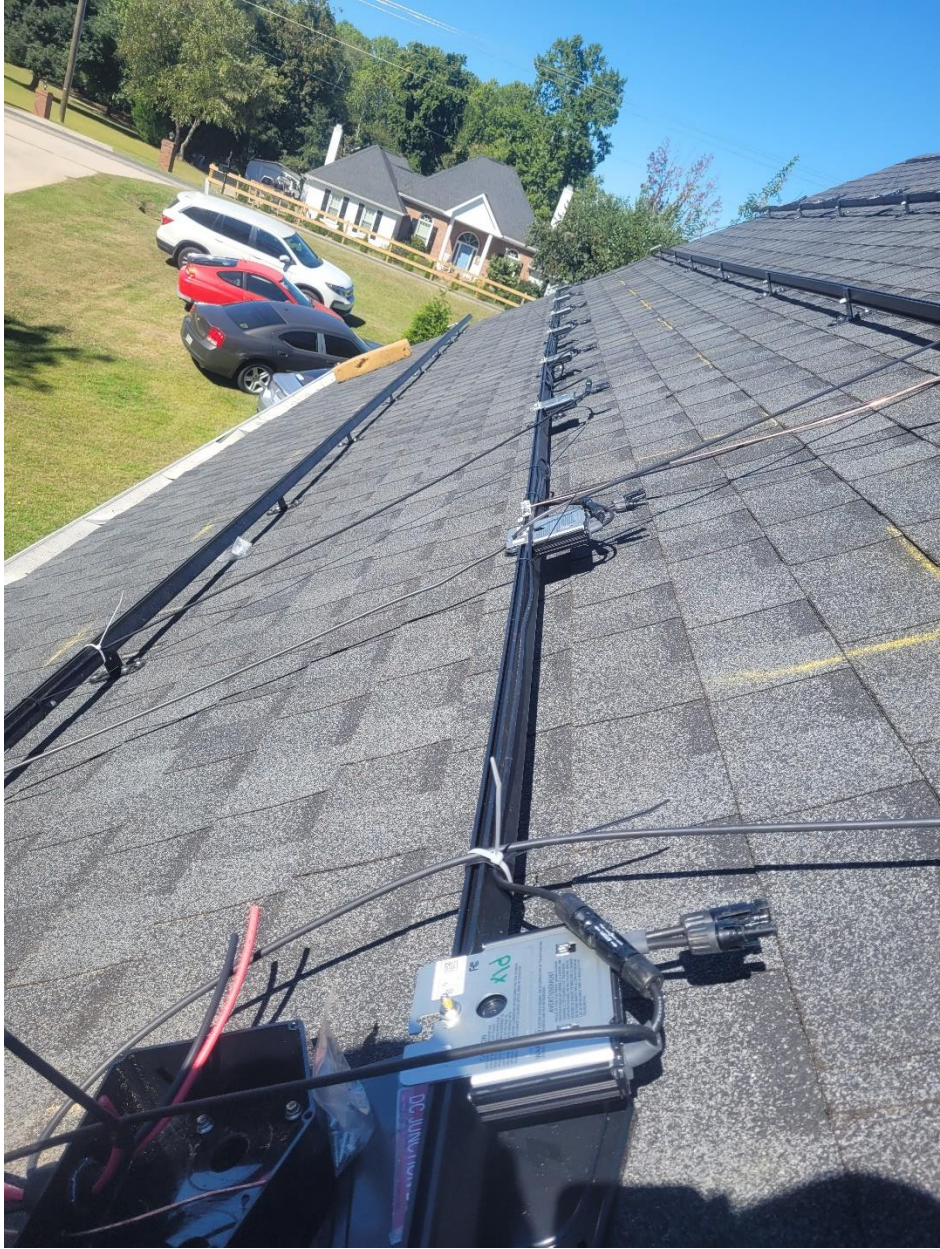




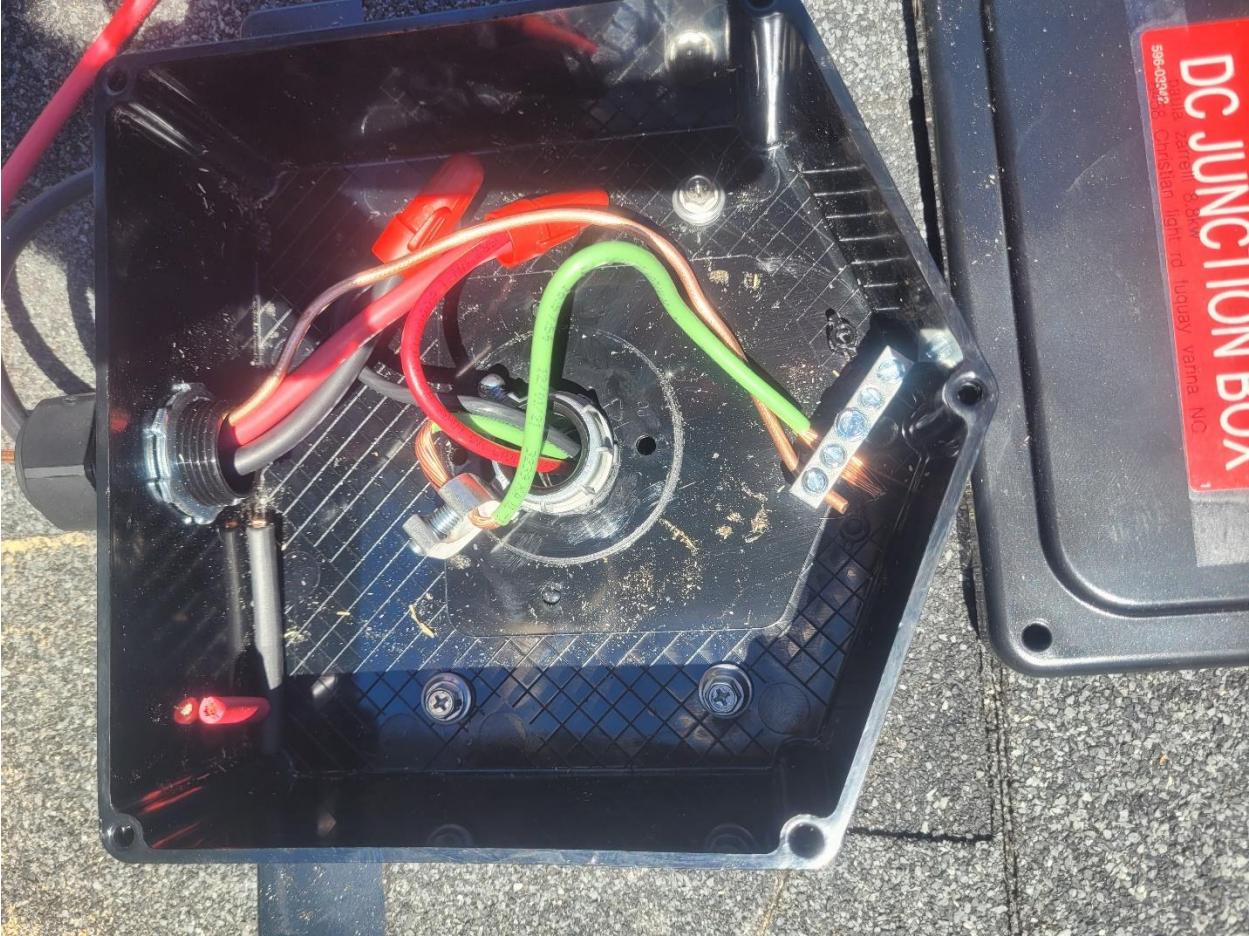


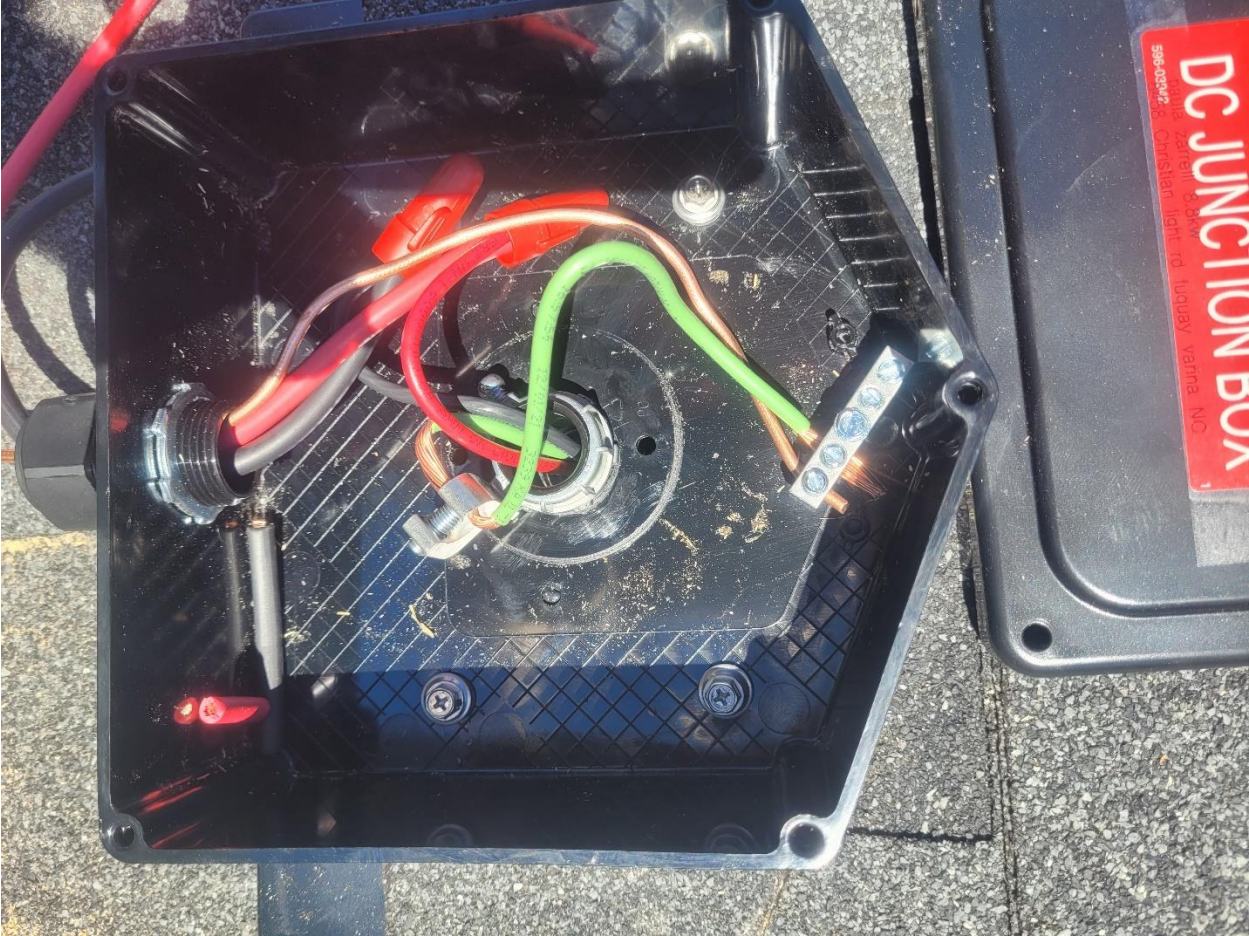


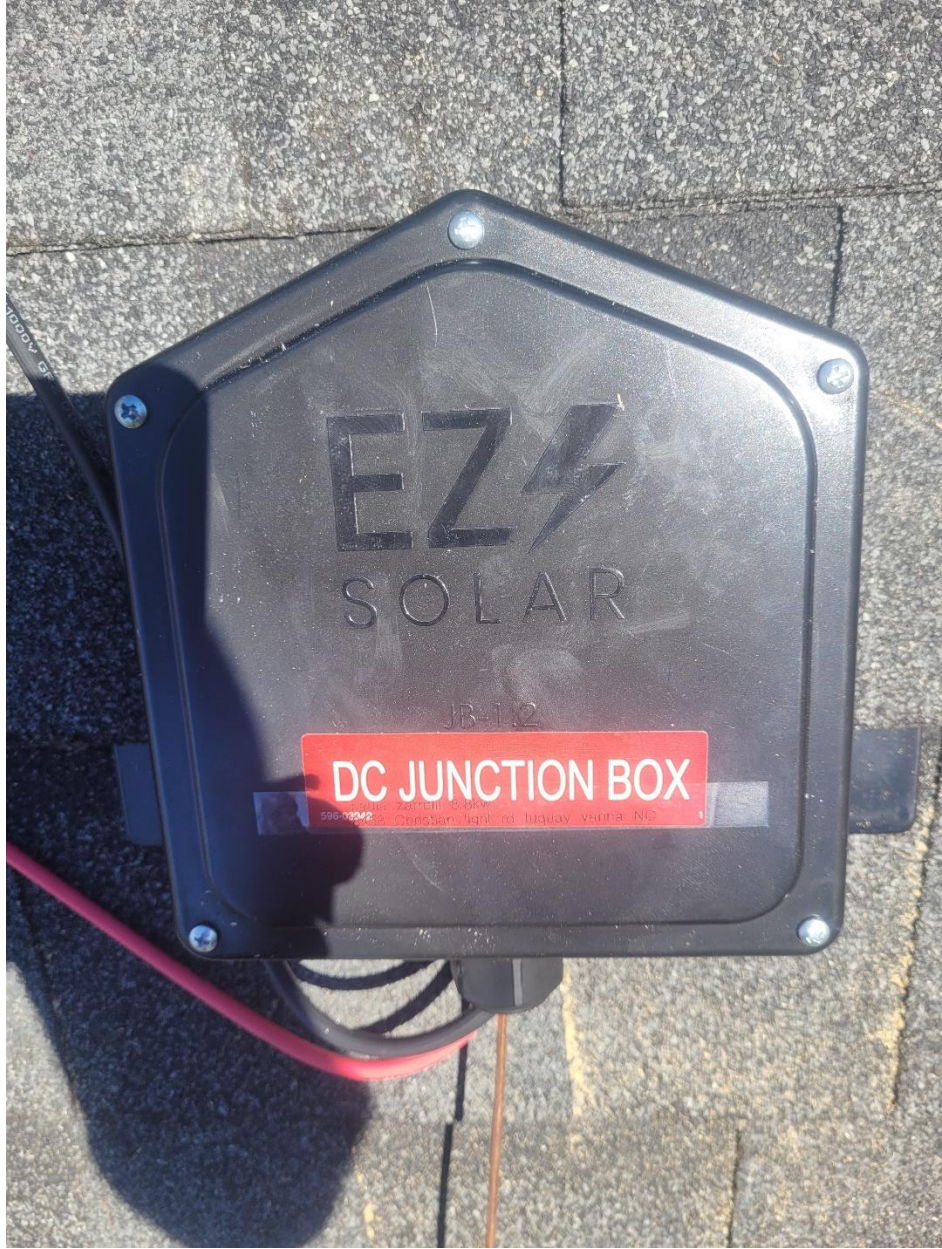


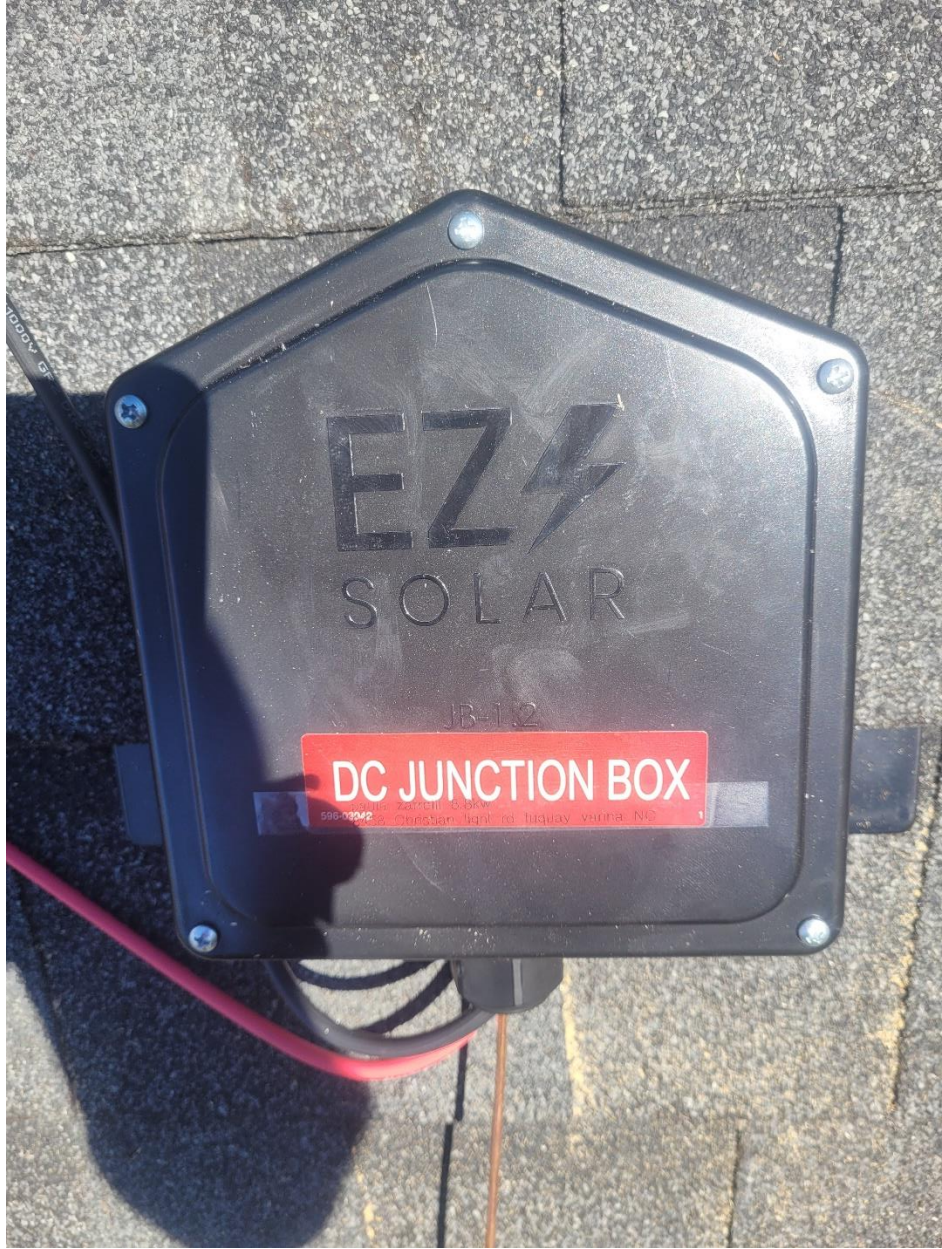
















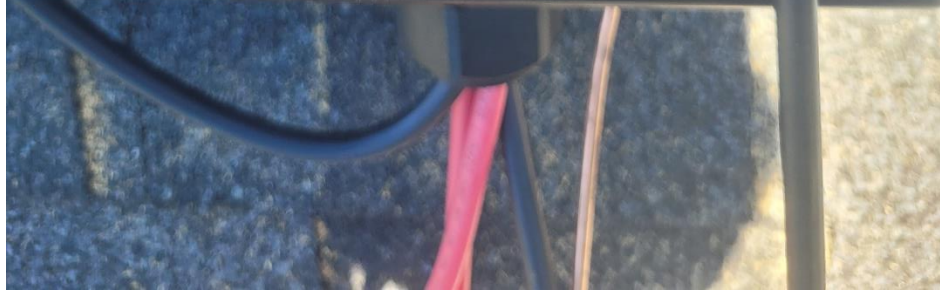


EZ
SOLAR

JB-1.2

DC JUNCTION BOX

596-3253 paula zarrelli 8.8kw
8458 Christian light rd fuquay varina NC



EZ
SOLAR

JB-1.2

DC JUNCTION BOX

596-3253 paula zarrelli 8.8kw
8458 Christian light rd fuquay varina NC





Photovoltaic Module

Module Type: FBM400MFG-BB

Maximum Power(Pmpp):	400W
Open Circuit Voltage(Voc):	37.20V±3%
Short Circuit Current(Isc):	13.68A±3%
Maximum Power Voltage(Vmpp):	31.17V
Maximum Power Current(Imp):	12.84A
Max System Voltage:	1000V
Tolerance of Pmp:	±3%
Power Sorting:	0~+5W
Series Fuse Rating:	30A
Dimension:	1723x1133x35(mm)
Weight:	21.7kg
Standard Test Condition:	1000W/m ² ,25°C,AM1.5
PV module classification:	Type 2(For USA only) Class C(For Canada only)



See Installation Instructions for
Installation Requirements to
Achieve a Specified System Fire
Class Rating with this Product.



WARNING
WETTERRECHT
Hazardous Electricity Can shock,
burn or cause death. Do not
touch terminals.
Électricité dangereuse peut faiblir,
causer brûlures ou décès, ne touchez
pas les bornes.



United Renewable Energy Co., Ltd

Module Assembly: VN
<http://www.urecorp.com/>

No. 7, Li-Hsin 3rd Rd., Hsinchu Science Park, Hsinchu, Taiwan











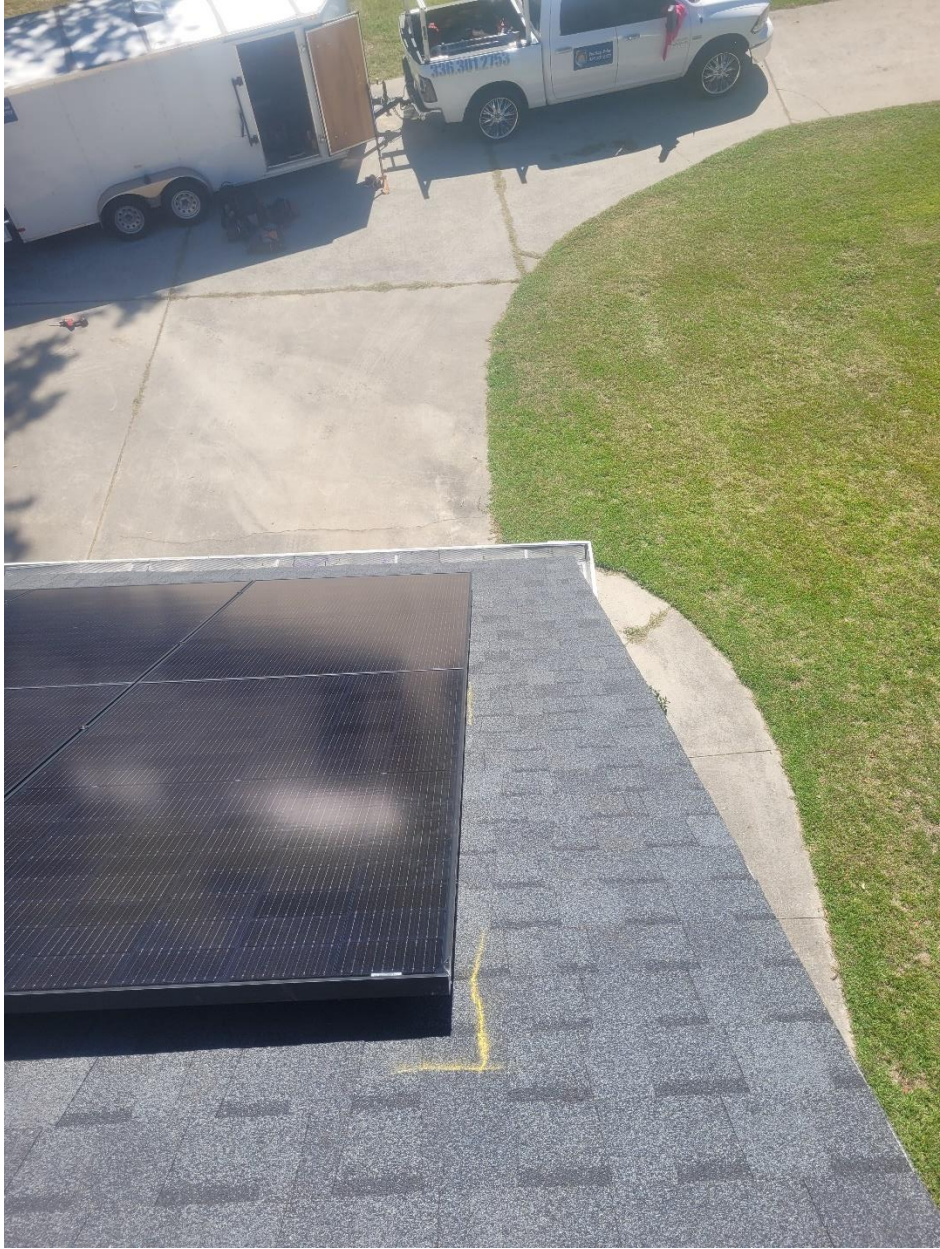
















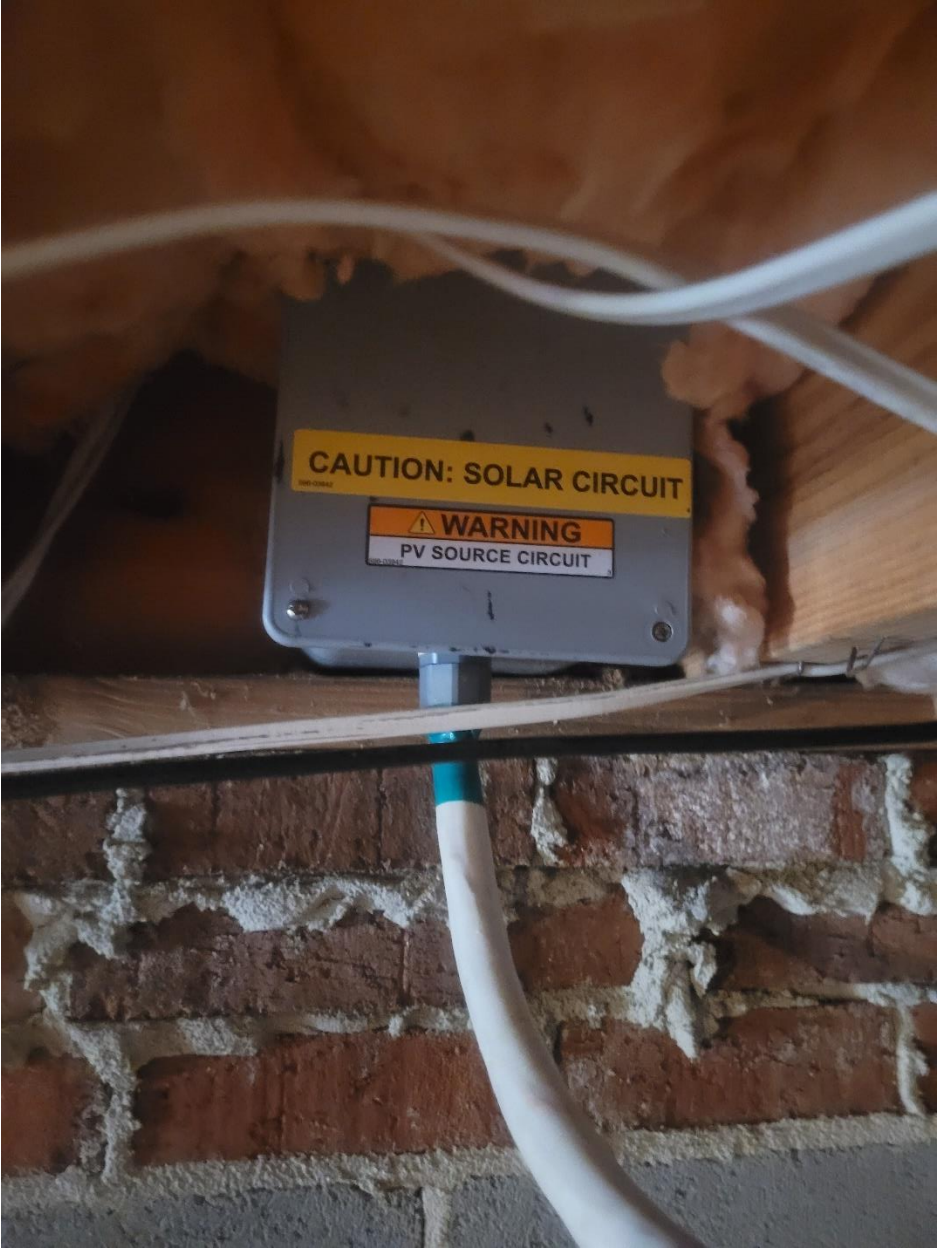






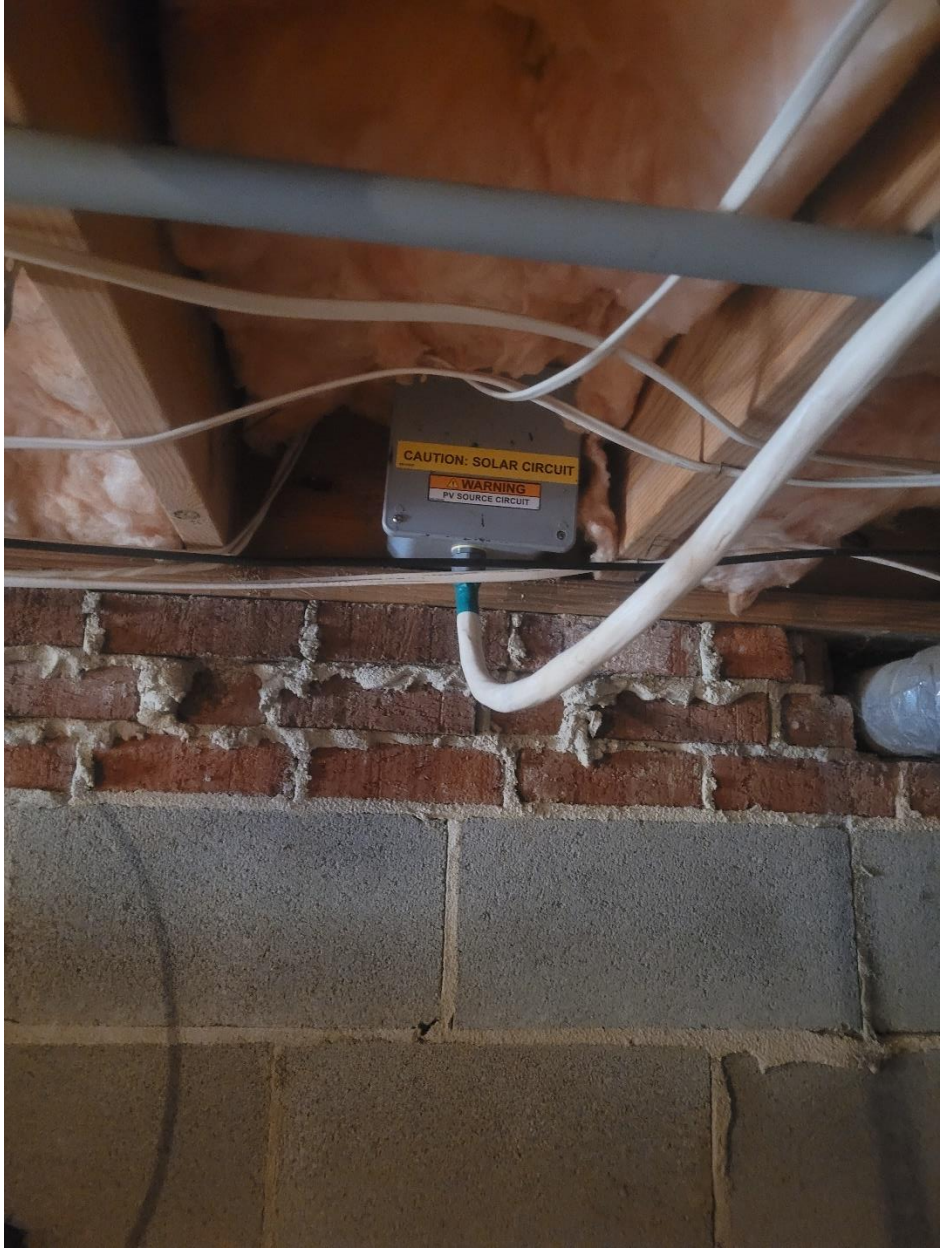




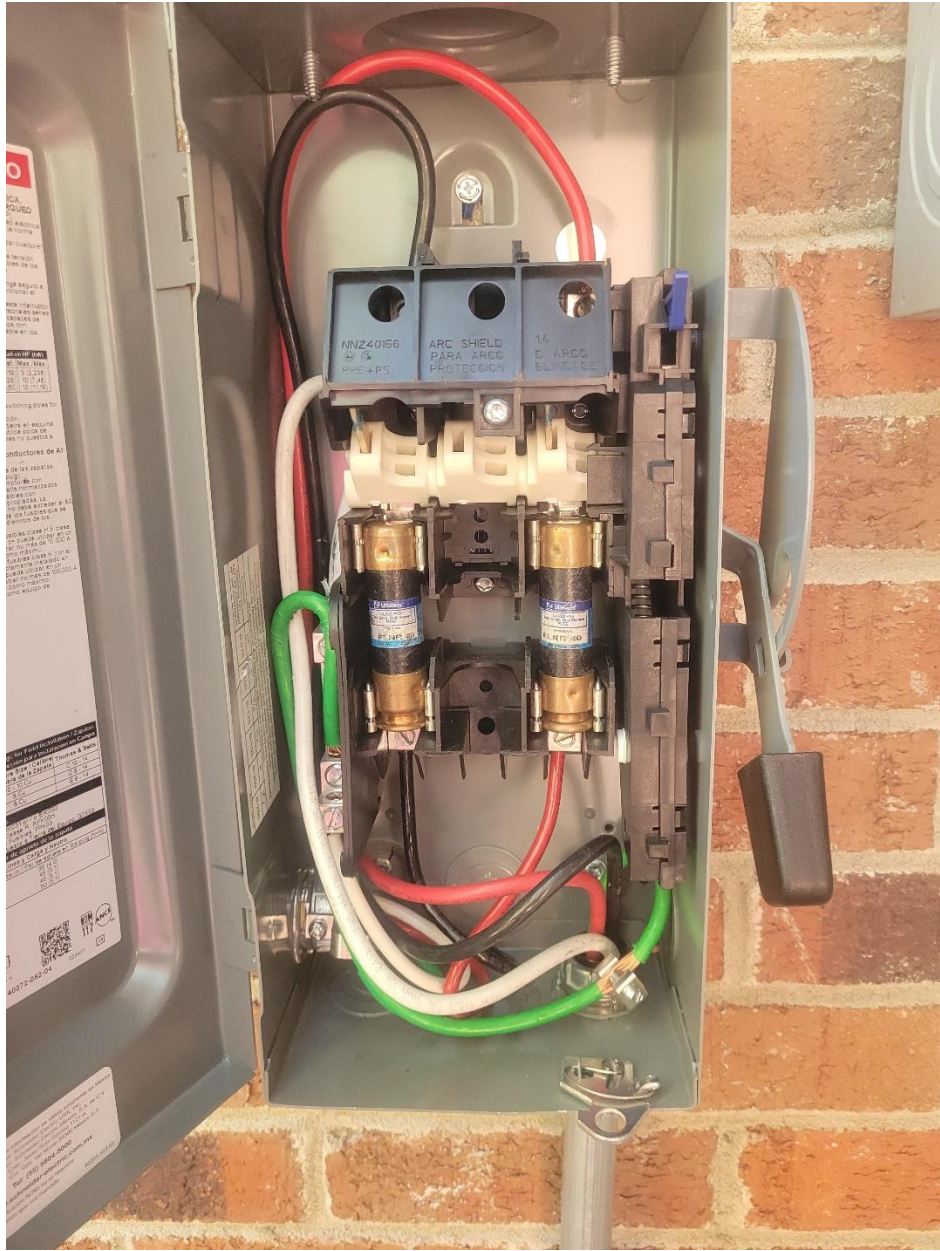


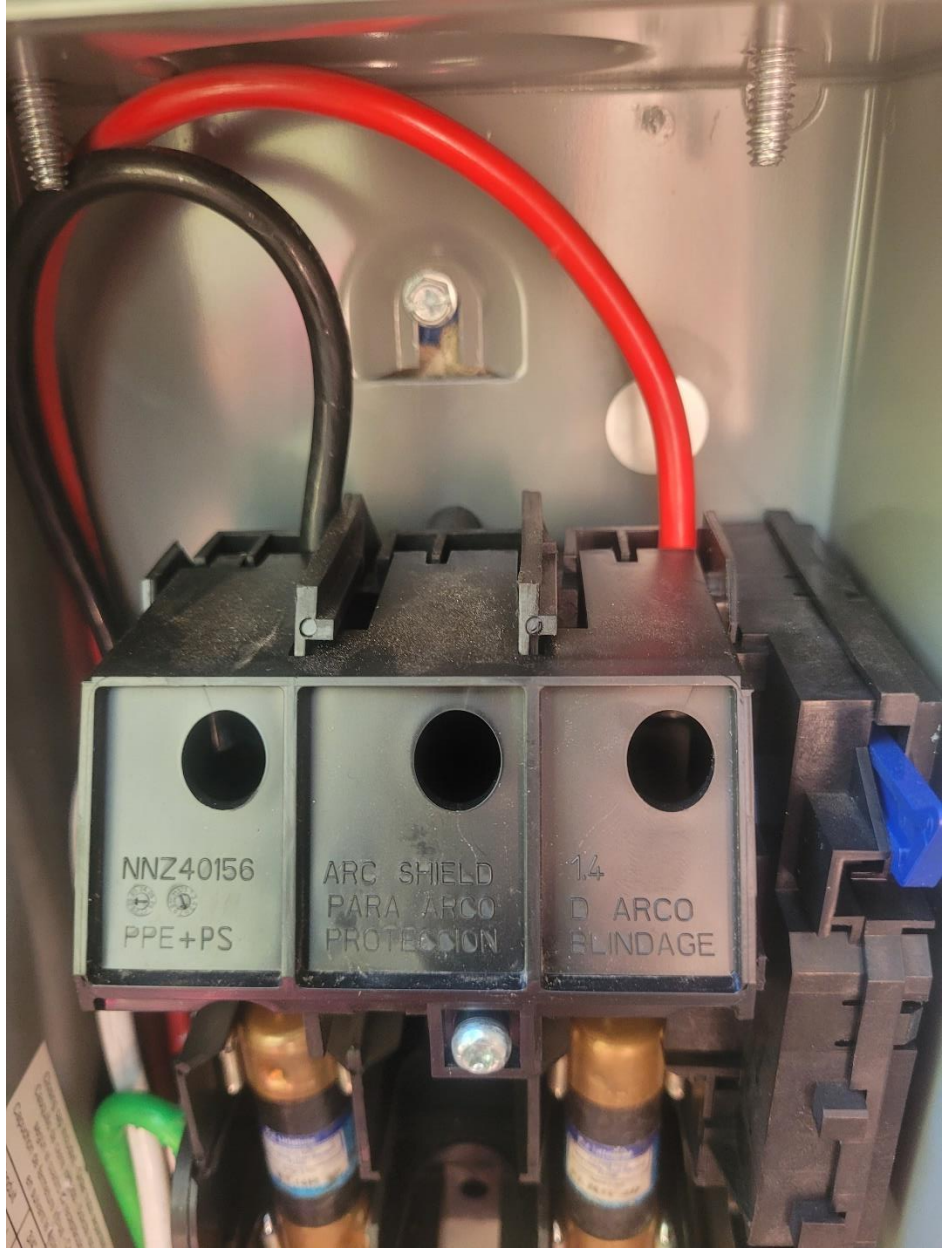


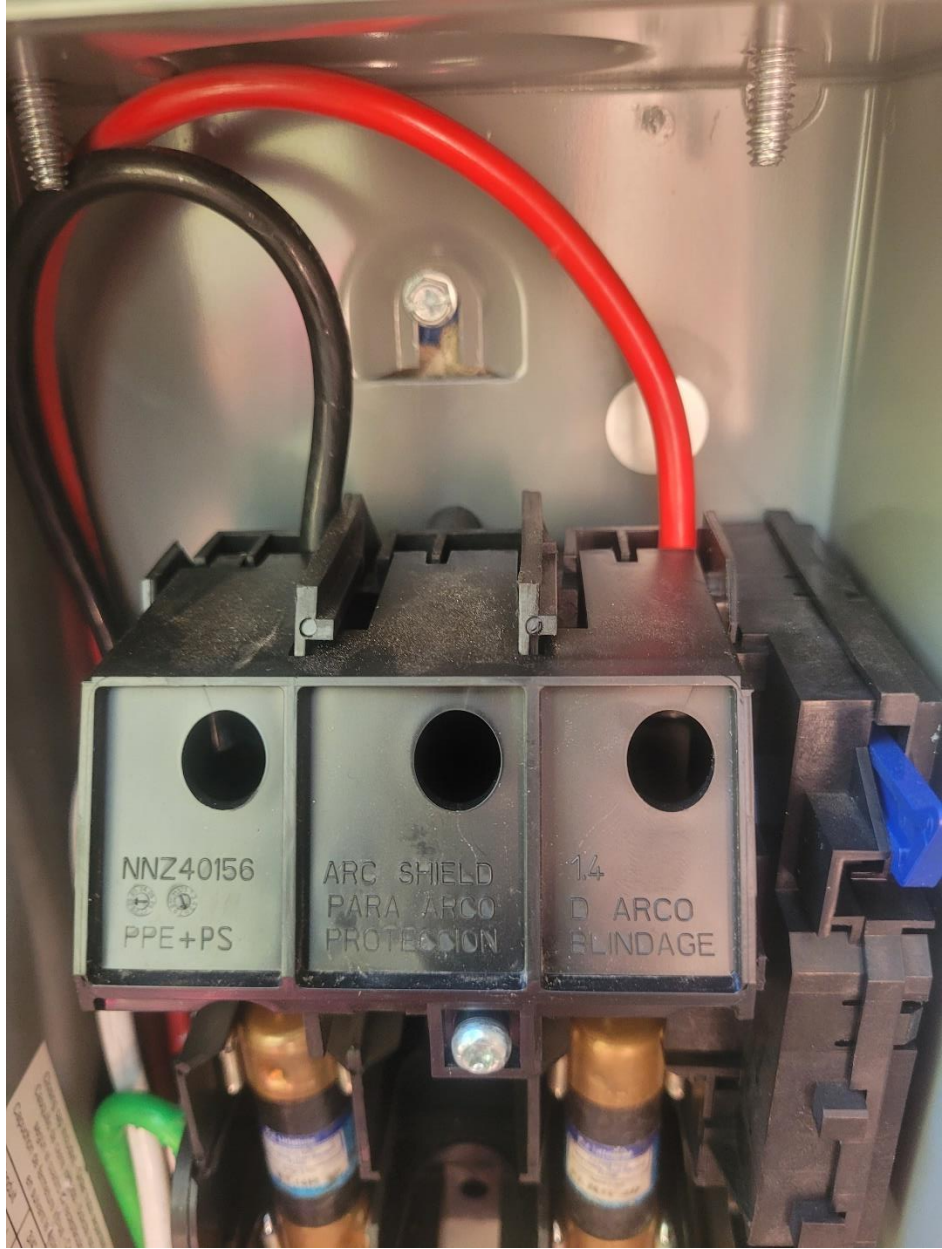


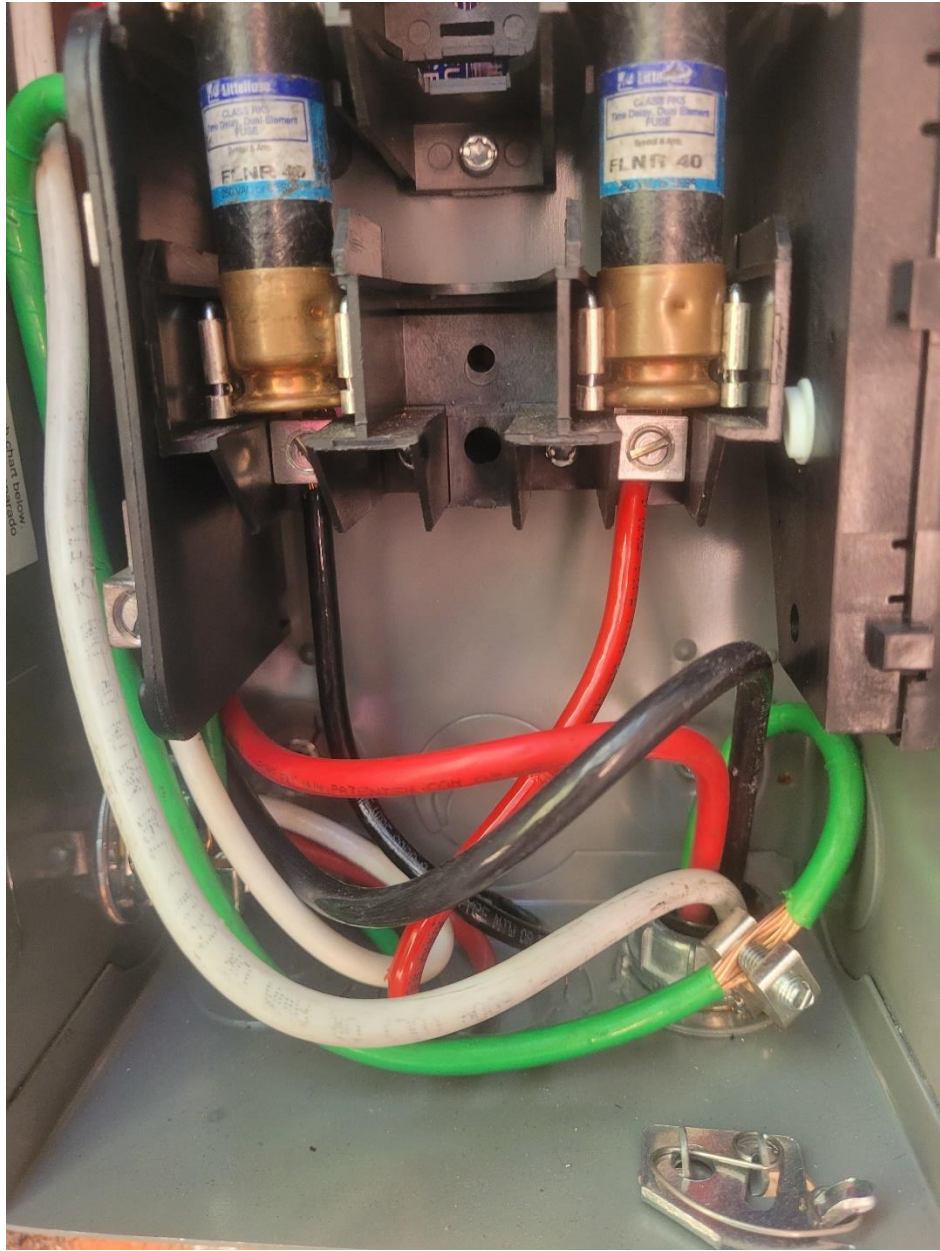


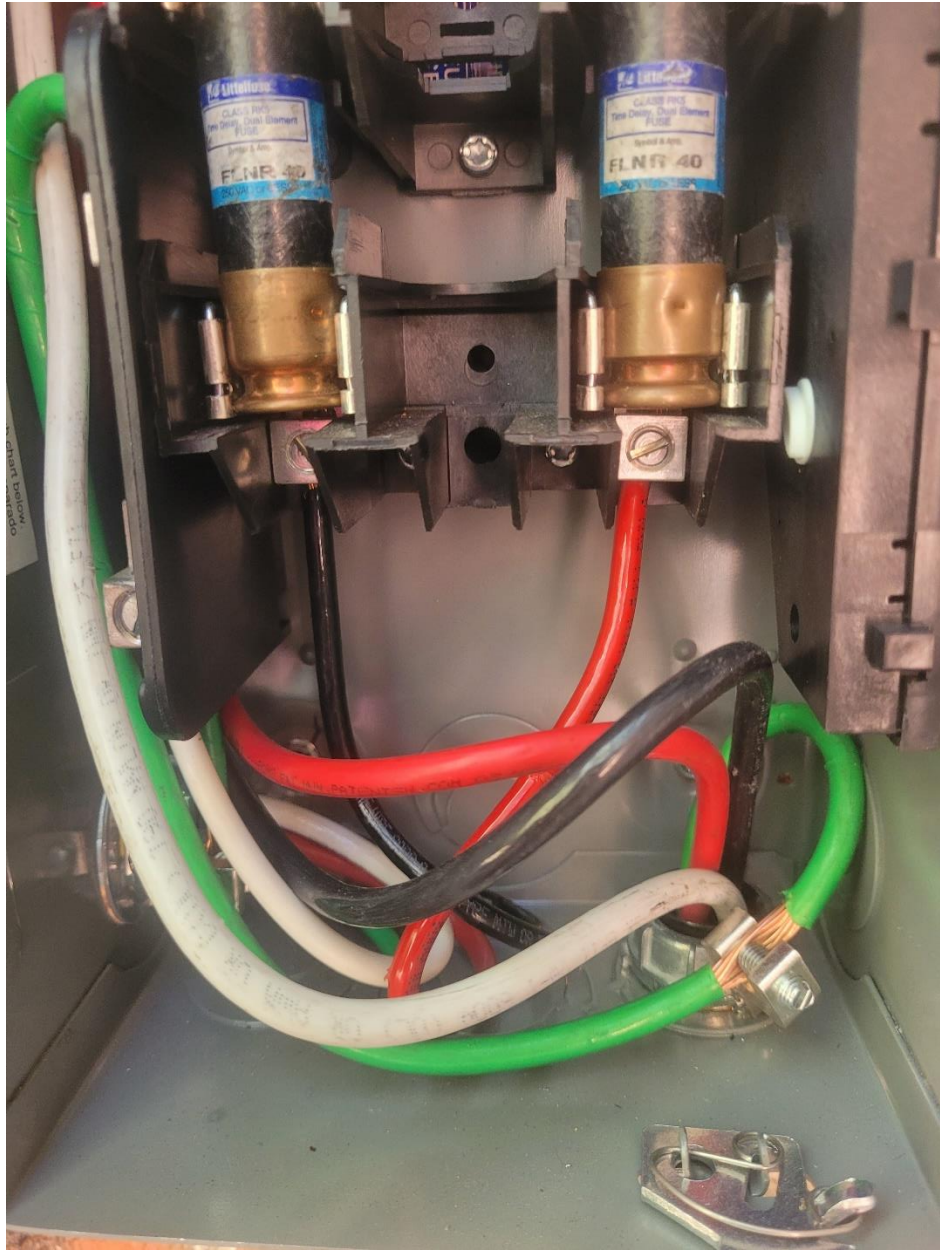












solar edge SE6000H - US
**Grid Support Utility Interactive
Non-Isolated Photovoltaic Inverter**

Operating Voltage Range	270 - 480Vdc
Max Input Current	16.5Adc
Max Continuous Output Power	5000Wac @ 208V 6000Wac @ 240V
Voltage Min - Nom - Max	183 - 208 - 220Vac 211 - 240 - 264Vac
Max Continuous Output Current	24Aac @ 208V 25Aac @ 240V
Max Output Fault Current	72Aac
Max Utility Backfeed Current	0Aac
Frequency Min - Nom - Max	59.3 - 60.0 - 60.5Hz
Output Power Factor	+/- 0.85 - 1
Max Ambient Temperature	60 C
Enclosure	IP65 / Type 3R
With integrated ground fault protection per NEC 690.35 (C)	
Type I Photovolt Arc-Fault Circuit - Protection	
COMPLIES WITH SUPPLEMENTAL INTERCONNECTION REQUIREMENTS	
Wi-Fi Password: Km9q2W3B	
Activation: 0s31 3Eyu IN6I SWXa v40/ Dwb1 Zao =	

WIFI MAC:
84:D6:C5:24:30:0A
ZigBee MAC:




Intertek
4004590

PN: SE6000H - US000BNU4
SN: SV2222 - 0740B0689 - DE




solar edge

**PHOTOVOLTAIC RAPID
SHUTDOWN SYSTEM**



solar edge

740B0689 - DE



solar edge SE6000H - US
**Grid Support Utility Interactive
Non-Isolated Photovoltaic Inverter**

Operating Voltage Range	270 - 480Vdc
Max Input Current	16.5Adc
Max Continuous Output Power	5000Wac @ 208V 6000Wac @ 240V
Voltage Min - Nom - Max	183 - 208 - 220Vac 211 - 240 - 264Vac
Max Continuous Output Current	24Aac @ 208V 25Aac @ 240V
Max Output Fault Current	72Aac
Max Utility Backfeed Current	0Aac
Frequency Min - Nom - Max	59.3 - 60.0 - 60.5Hz
Output Power Factor	+/- 0.85 - 1
Max Ambient Temperature	60 C
Enclosure	IP65 / Type 3R
With integrated ground fault protection per NEC 690.35 (C)	
Type I Photovolt Arc-Fault Circuit - Protection	
COMPLIES WITH SUPPLEMENTAL INTERCONNECTION REQUIREMENTS	
Wi-Fi Password: Km9q2W3B	
Activation: 0s31 3Eyu IN6I SWXa v40/ Dwb1 Za0 =	

WiFi MAC:
84:D6:C5:24:30:0A
ZigBee MAC:


Intertek
4004590


PN: SE6000H - US000BNU4
SN: SV2222 - 0740B0689 - DE




solar edge

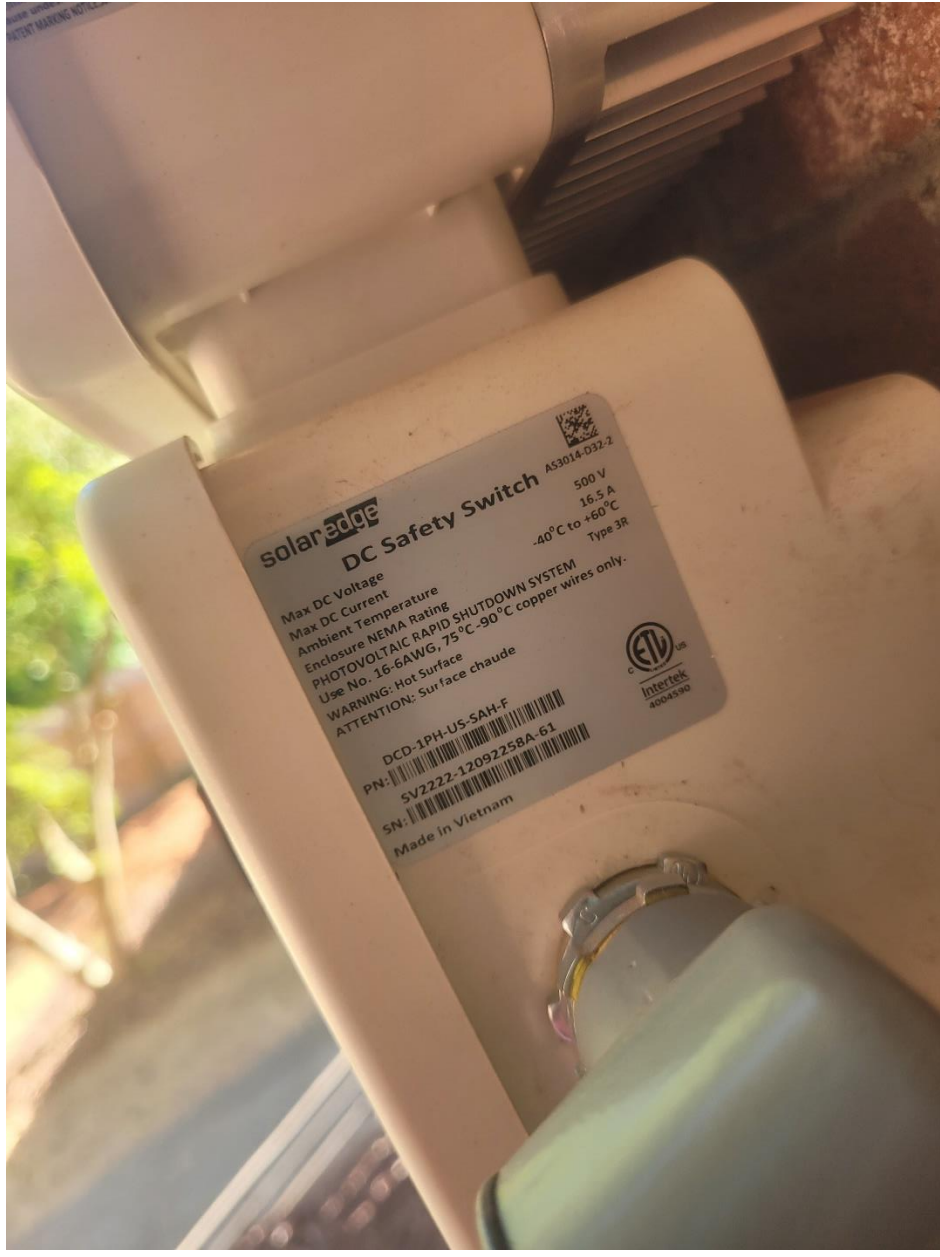
**PHOTOVOLTAIC RAPID
SHUTDOWN SYSTEM**




solar edge 



740B0689 - DE




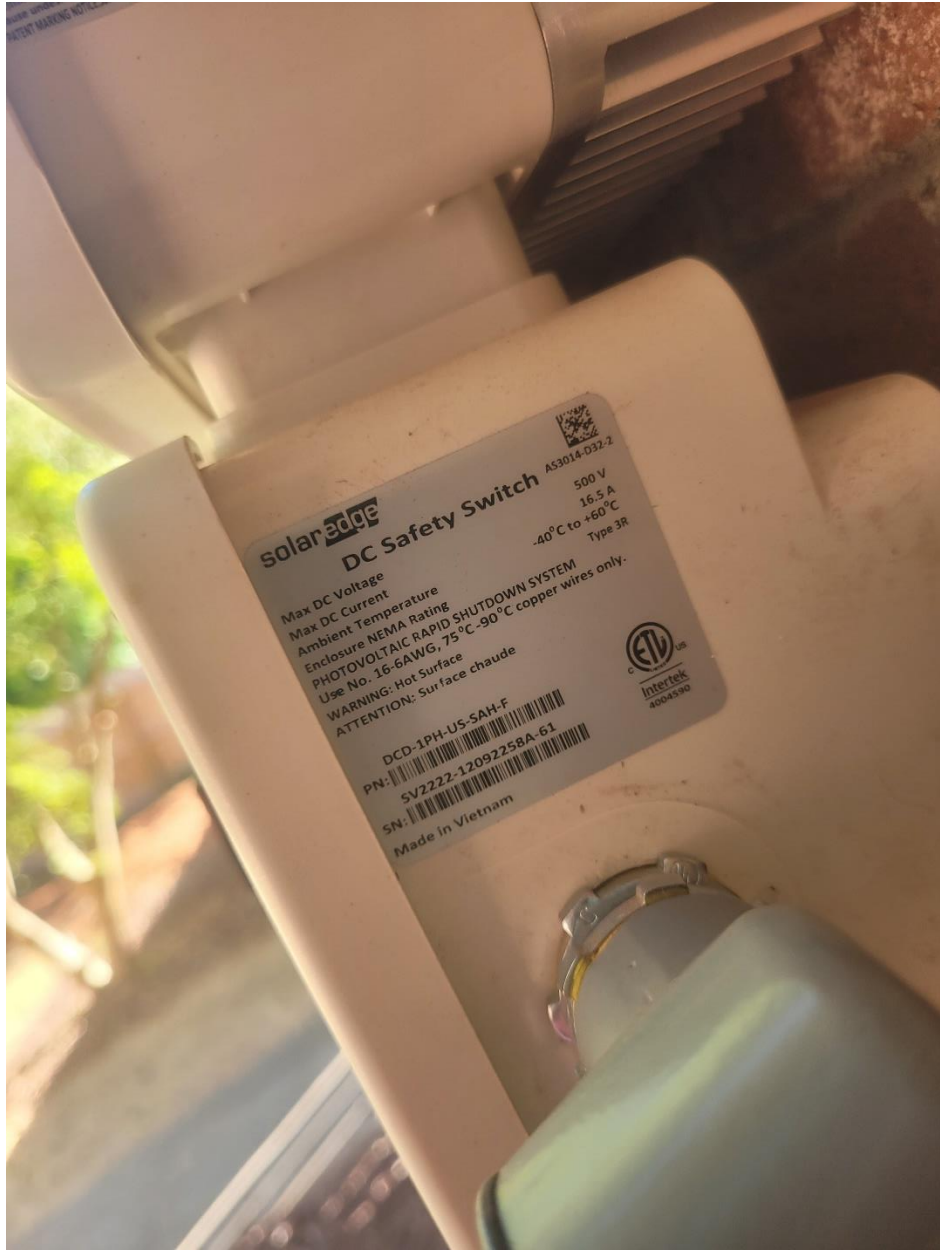



 AS3014-D32-2
solar edge
DC Safety Switch

Max DC Voltage 500 V
 Max DC Current 16.5 A
 Ambient Temperature -40°C to +60°C
 Enclosure NEMA Rating Type 3R
 PHOTOVOLTAIC RAPID SHUTDOWN SYSTEM
 Use No. 16-6AWG, 75°C-90°C copper wires only.
 WARNING: Hot surface
 ATTENTION: Sur face chaude


DCD-1PH-US-SAH-F
 PN: 
 SV2222-1209225BA-61
 SN: 
 Made in Vietnam




 Intertek
 4004390



 AS3014-D32-2
solar edge
DC Safety Switch

Max DC Voltage 500 V
 Max DC Current 16.5 A
 Ambient Temperature -40°C to +60°C
 Enclosure NEMA Rating Type 3R
 PHOTOVOLTAIC RAPID SHUTDOWN SYSTEM
 Use No. 16-6AWG, 75°C-90°C copper wires only.
 WARNING: Hot surface
 ATTENTION: Sur face chaude


 Intertek
 4004390

DCD-1PH-US-SAH-F
 PN: 
 SV2222-1209225BA-61
 SN: 
 Made in Vietnam

PHOTOVOLTAIC RAPID
SHUTDOWN SYSTEM

solar edge



FIL LISTED
CONFORMS TO
ANSI/UL
CRITICAL TO
LIFE
CELL 90 107

Intertek
4004590

7408D688 - DE



Contains FCC ID 2AGPT-PL104 (E 20916-P063). The enclosed device complies with part 15 of the FCC Rules. Operation is subject to the following two conditions: (1) This device may not cause harmful interference and (2) This device must accept any interference received, including interference that may cause undesired operation.
PATENT MARKING NOTICE: www.solaredge.com/patent
Made in Vietnam

solar edge

DC Safety Switch

AS3016-032-2
500 V
16.5 A
-40°C to +60°C
Type 2R

Max DC Voltage
Max DC Current
Ambient Temperature
Enclosure NEMA Rating
PHOTOVOLTAIC RAPID SHUTDOWN SYSTEM
Use No. 16-6AWG, 75°C-90°C copper wires only.
WARNING: Hot Surface
ATTENTION: Sur face chaude



DCD-1PH-US-SAH-F

PN: 5V2222-1209225BA-61

SN:
Made in Vietnam

PHOTOVOLTAIC RAPID SHUTDOWN SYSTEM

solar edge



FIL LISTED
CONFORMS TO
ANSI/UL
CRITICAL TO
LIFE
CELL 90 107

Intertek
4004590

7408D688 - DE



Contains FCC ID 2AGPT-PL104 (E 20916-P063). The enclosed device complies with part 15 of the FCC Rules. Operation is subject to the following two conditions: (1) This device may not cause harmful interference and (2) This device must accept any interference received, including interference that may cause undesired operation.
www.solar-edge.com/global/en/pt
PATENT MARKING NOTICE
Made in Vietnam

solar edge

DC Safety Switch

AS3016-032-2

500 V

16.5 A

-40°C to +60°C

Type 2R

Max DC Voltage
Max DC Current
Ambient Temperature
Enclosure NEMA Rating
PHOTOVOLTAIC RAPID SHUTDOWN SYSTEM
Use No. 16-6AWG, 75°C-90°C copper wires only.
WARNING: Hot Surface
ATTENTION: Sur face chaude



DCD-1PH-US-SAH-F

PN: 5V2222-1209225BA-61

SN: [Barcode]

Made in Vietnam

Intertek
4004590







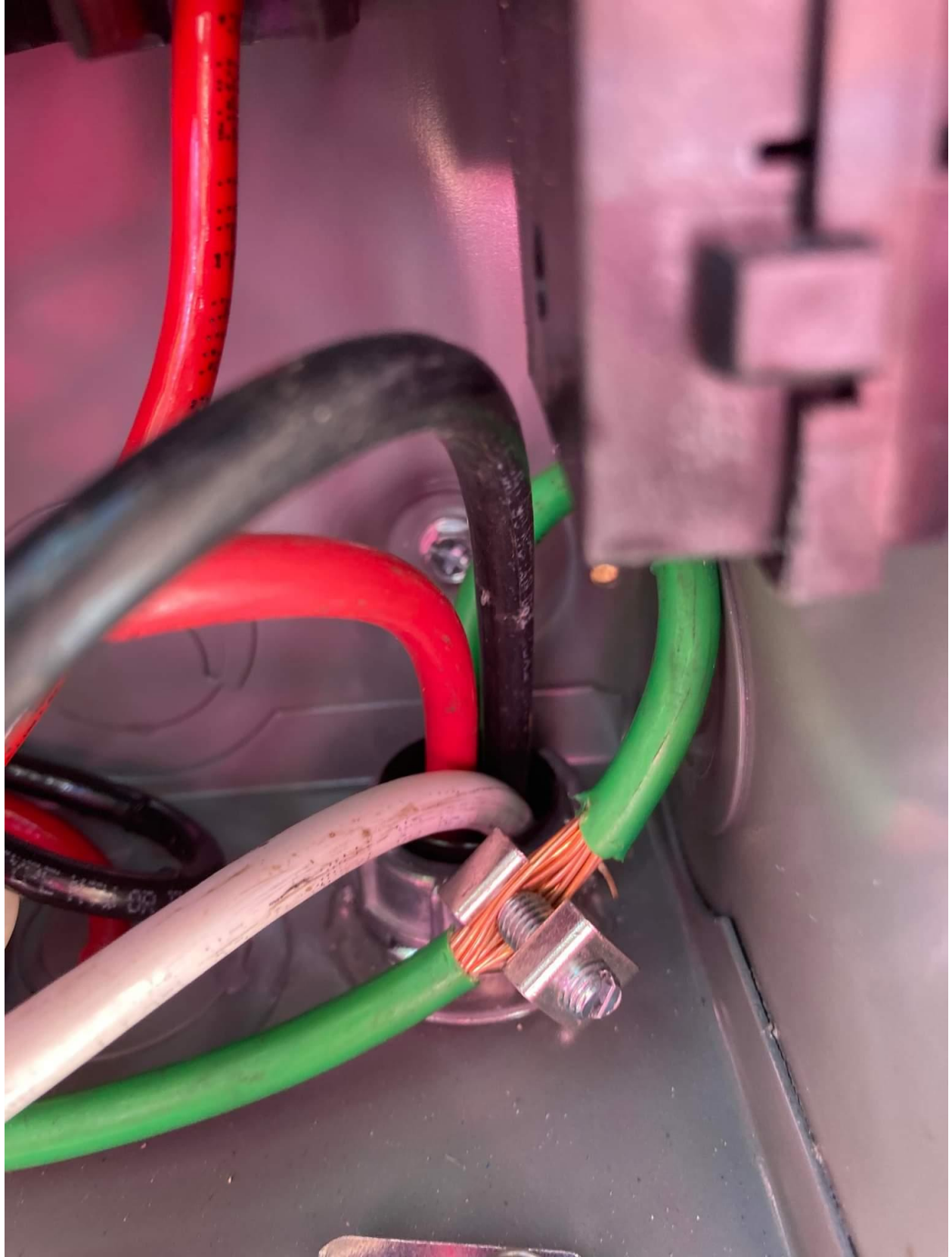












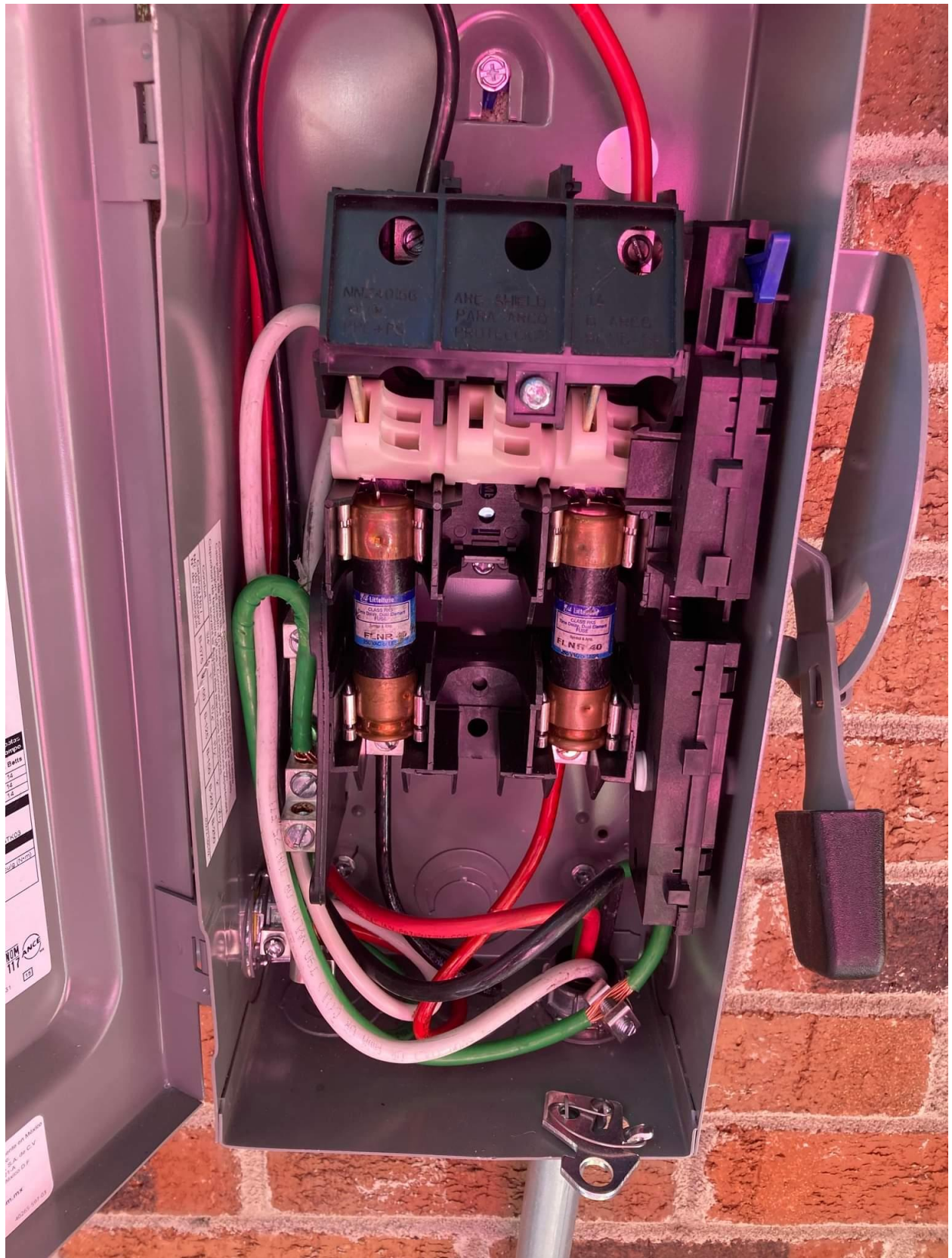


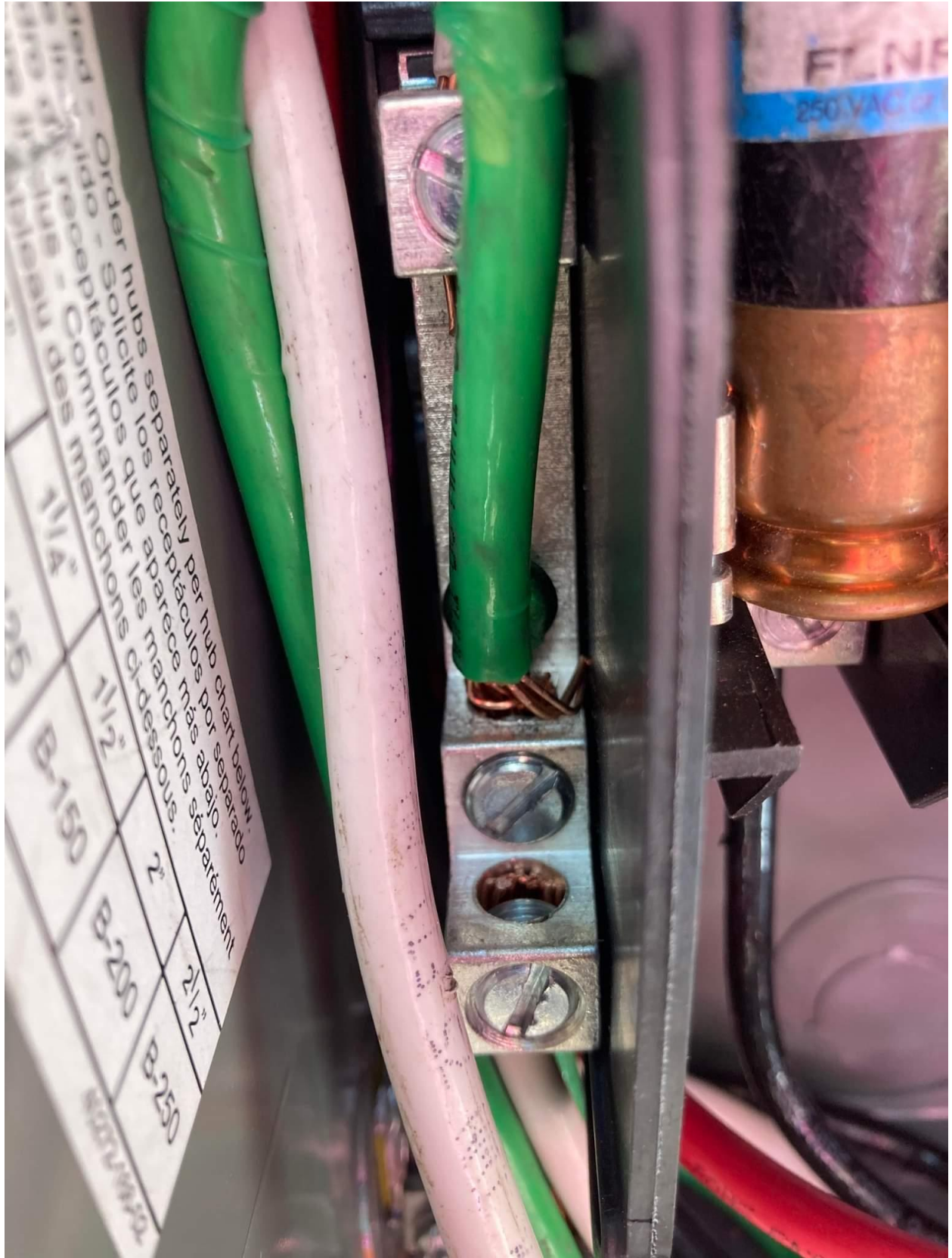
S1-10
S2-12

Charls ZArreli 8.8 KW

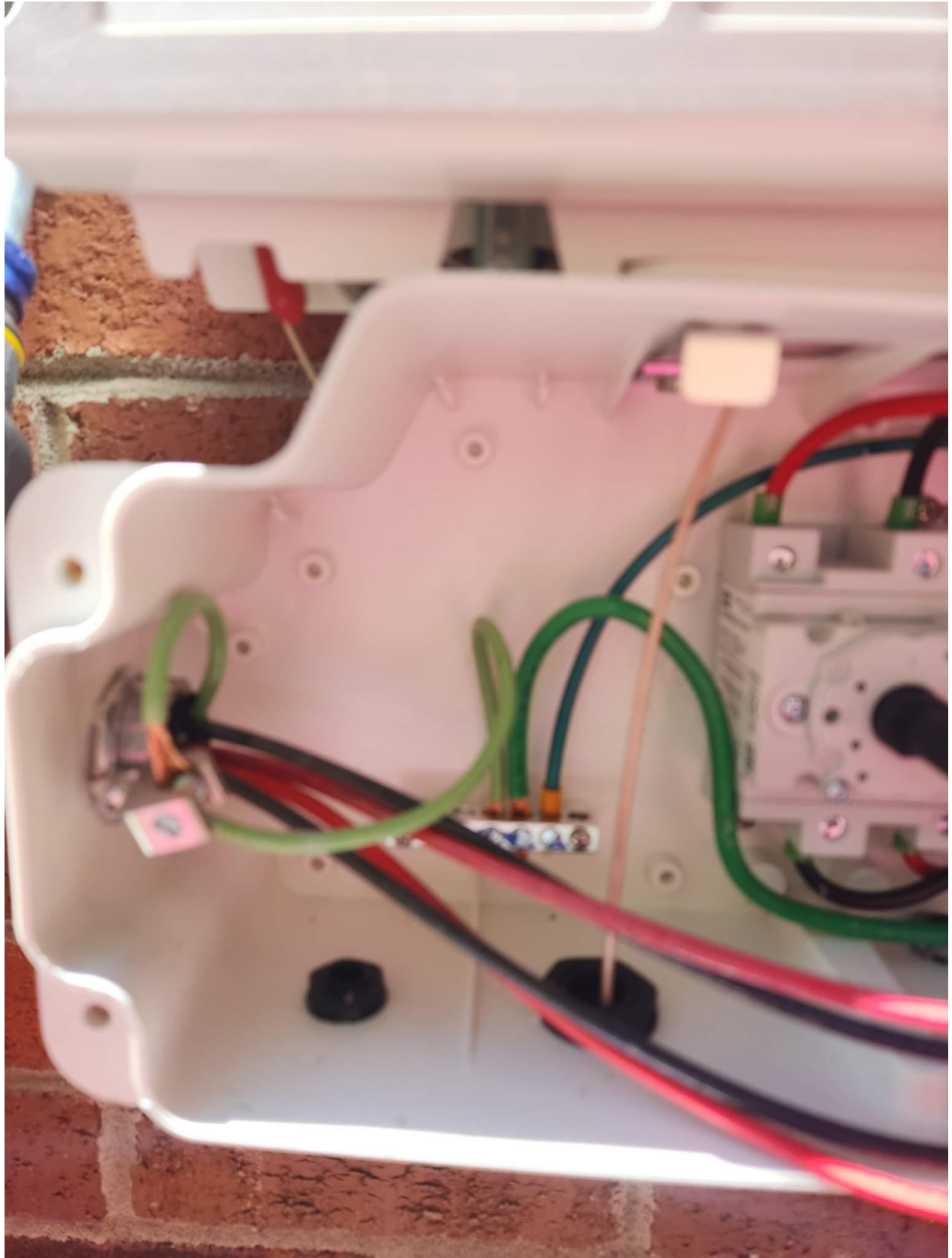


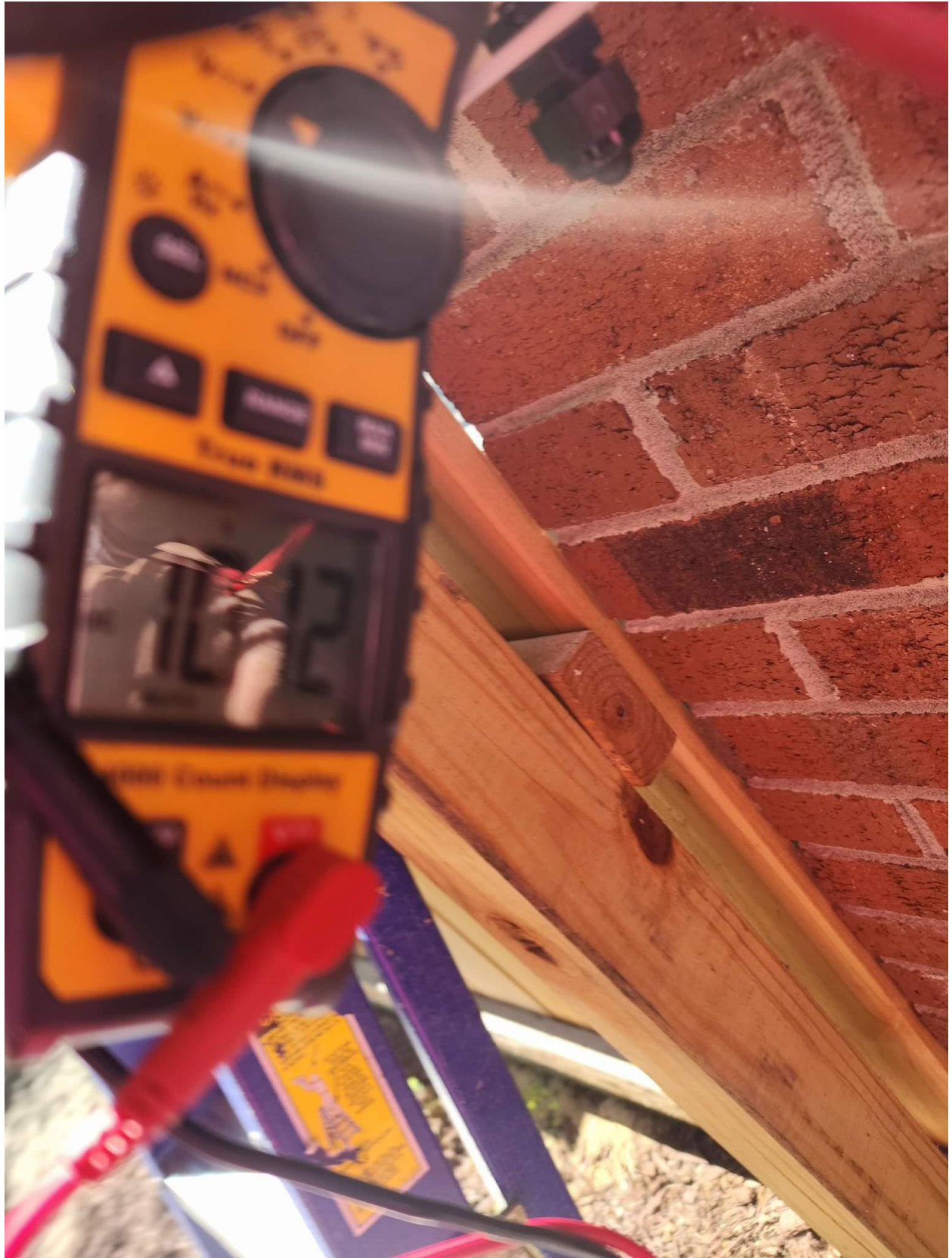




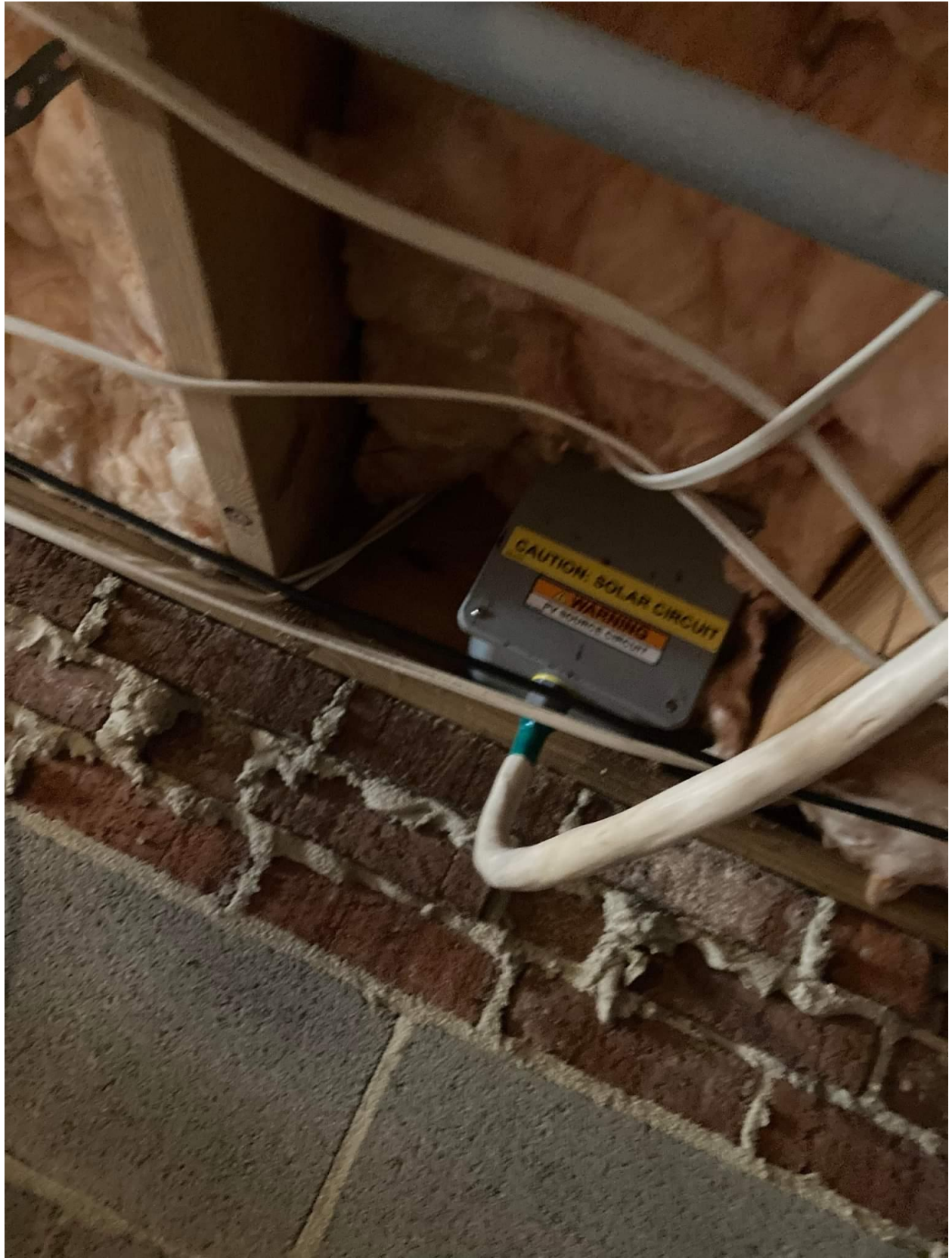


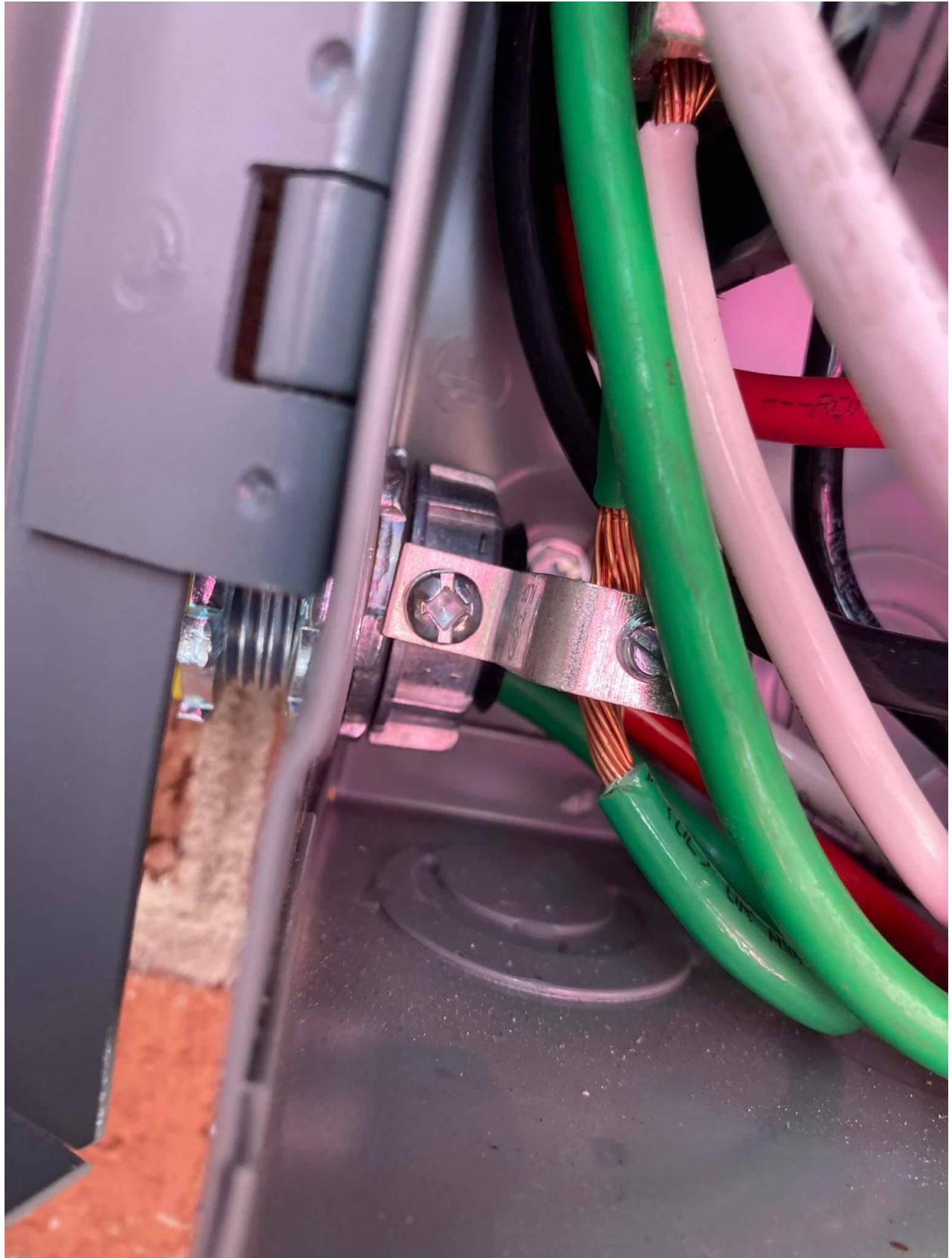












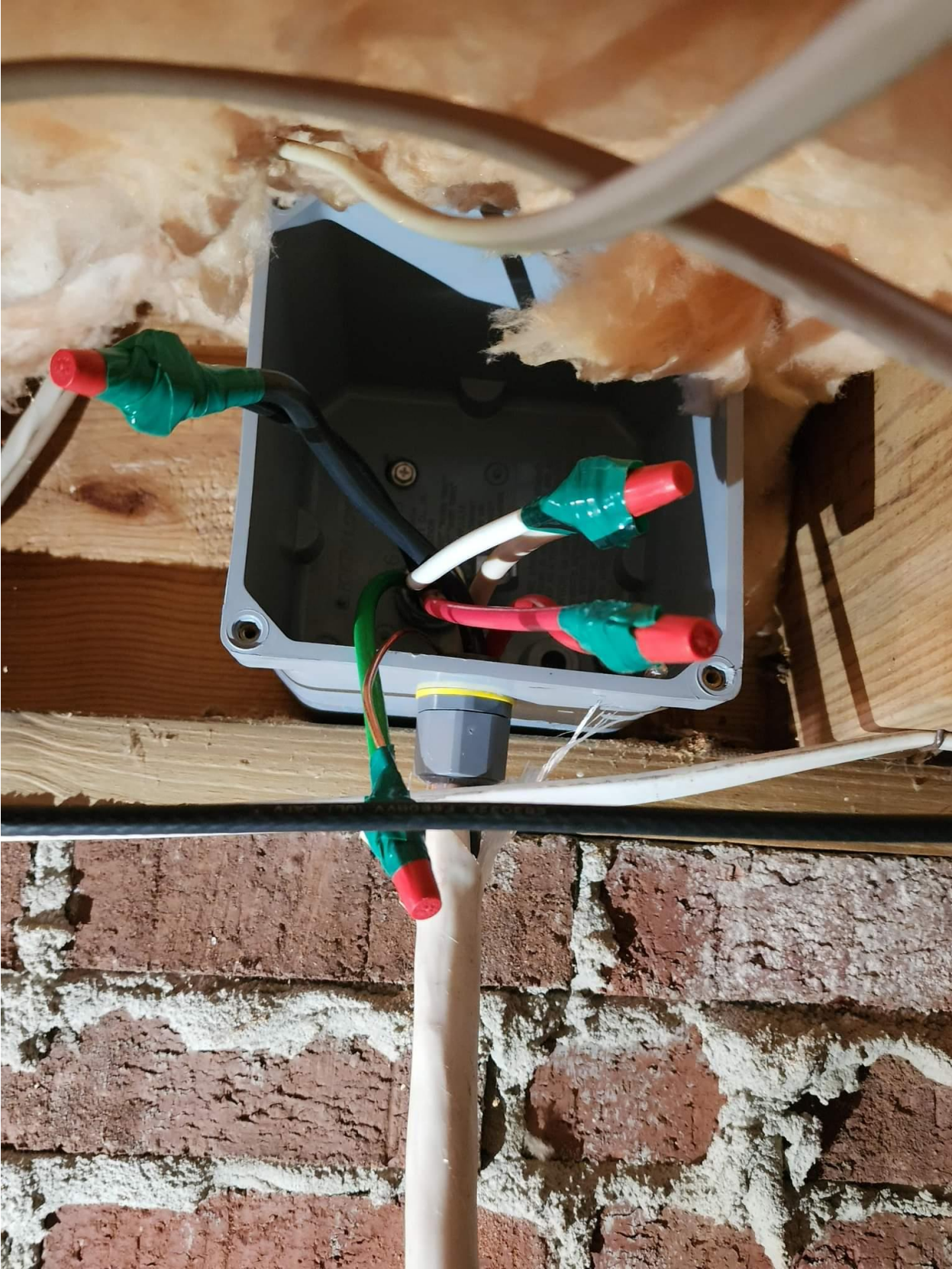


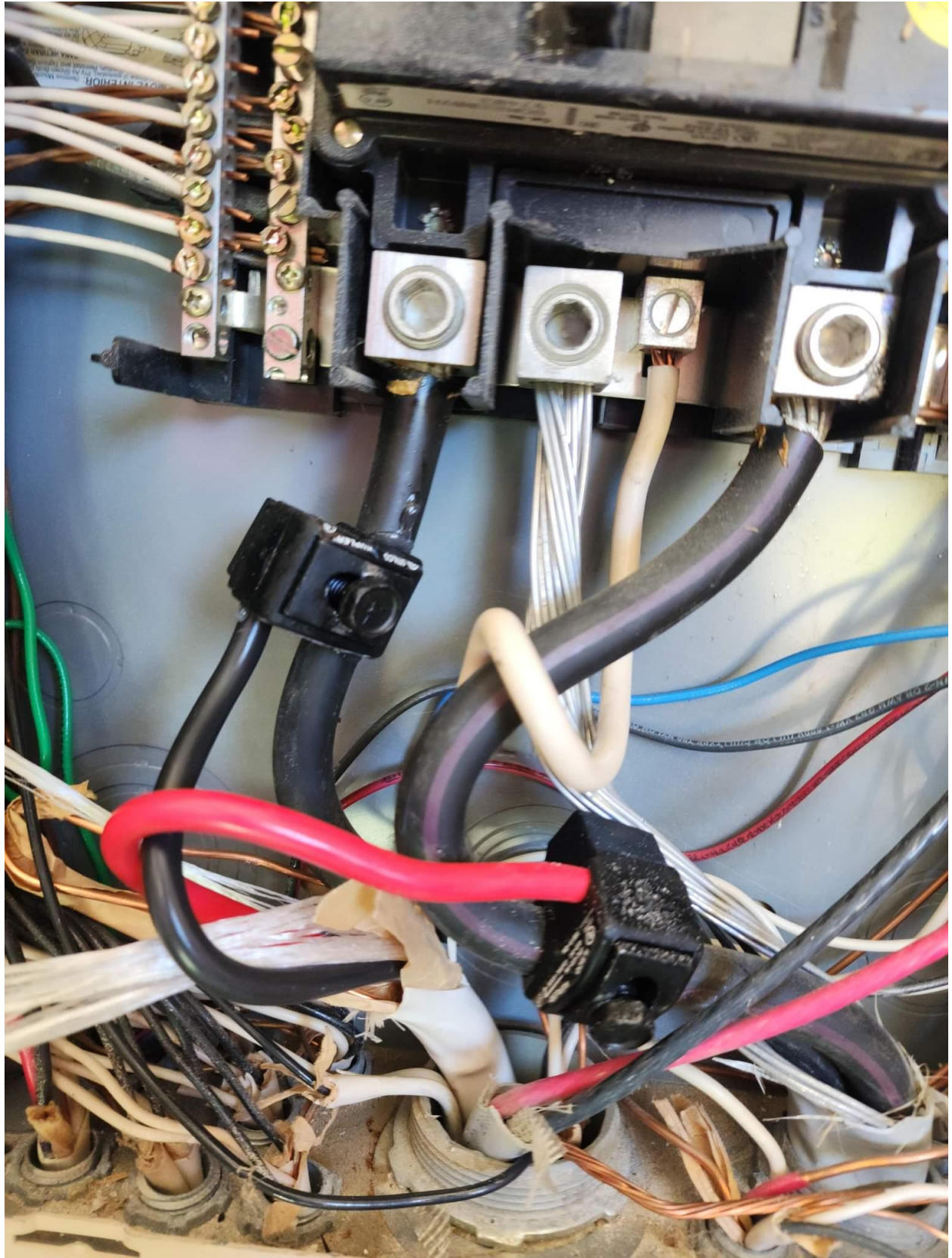


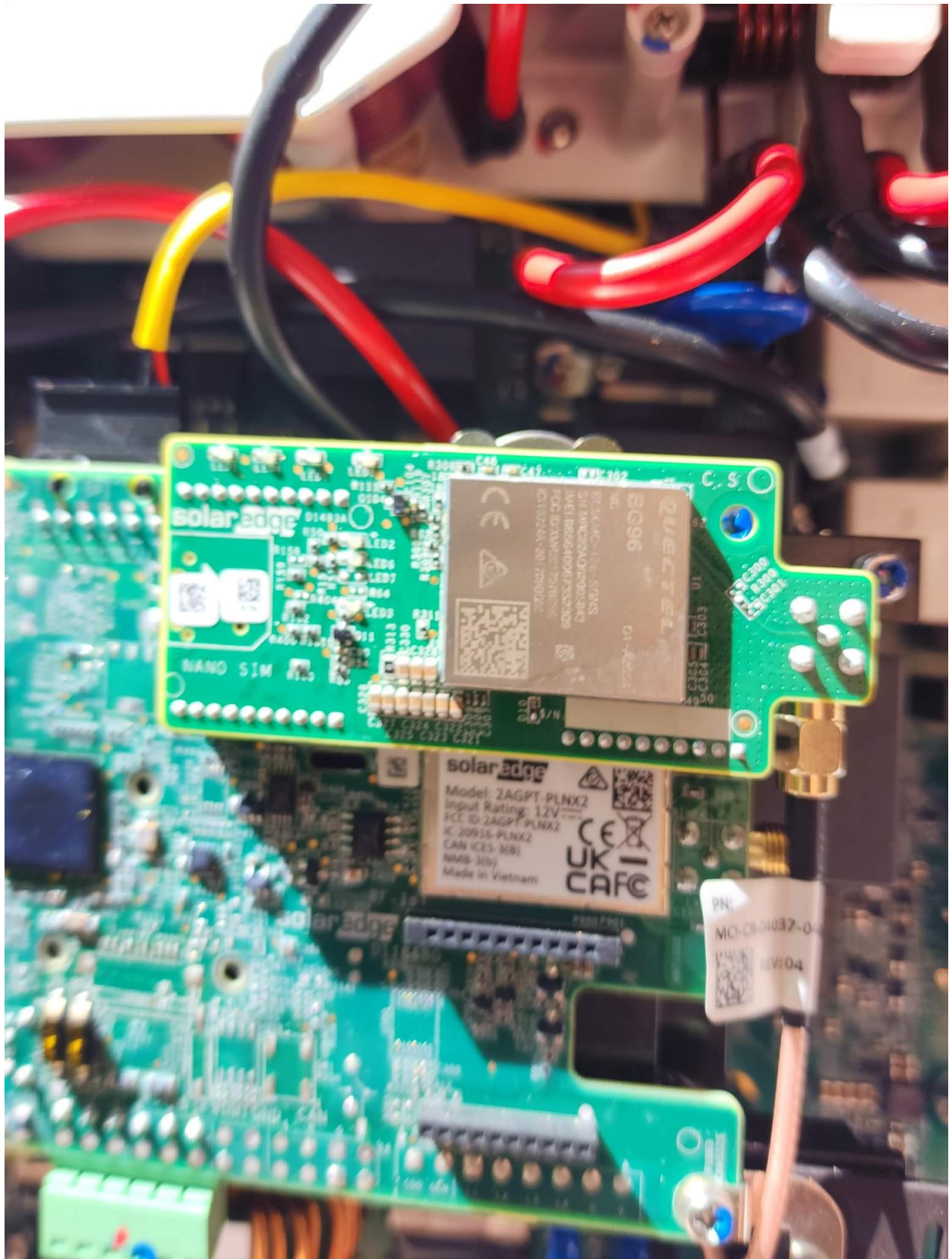












solar edge
NANO SIM
Quectel
BC96
01-A8888
Model: 2AGPT-PLNX2
Input Rating: 12V
FCC ID: 2AGPT-PLNX2
IC: 20915-PLNX2
CAN ICES-1(B)
NMS-103
Made in Vietnam
UK
CAFE

solar edge
Model: 2AGPT-PLNX2
Input Rating: 12V
FCC ID: 2AGPT-PLNX2
IC: 20915-PLNX2
CAN ICES-1(B)
NMS-103
Made in Vietnam
UK
CAFE

PN:
MCI-08-0037-0
REV104

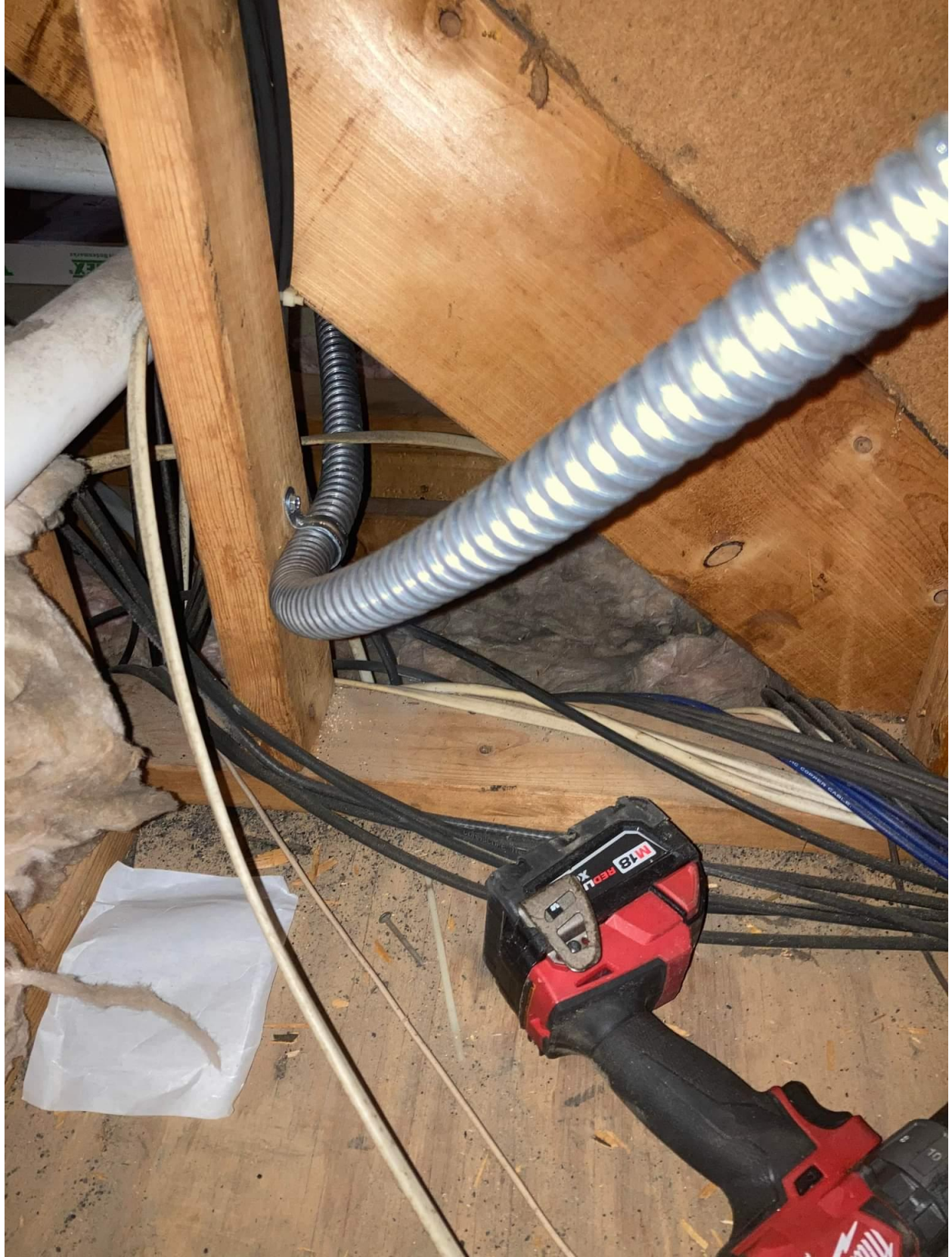


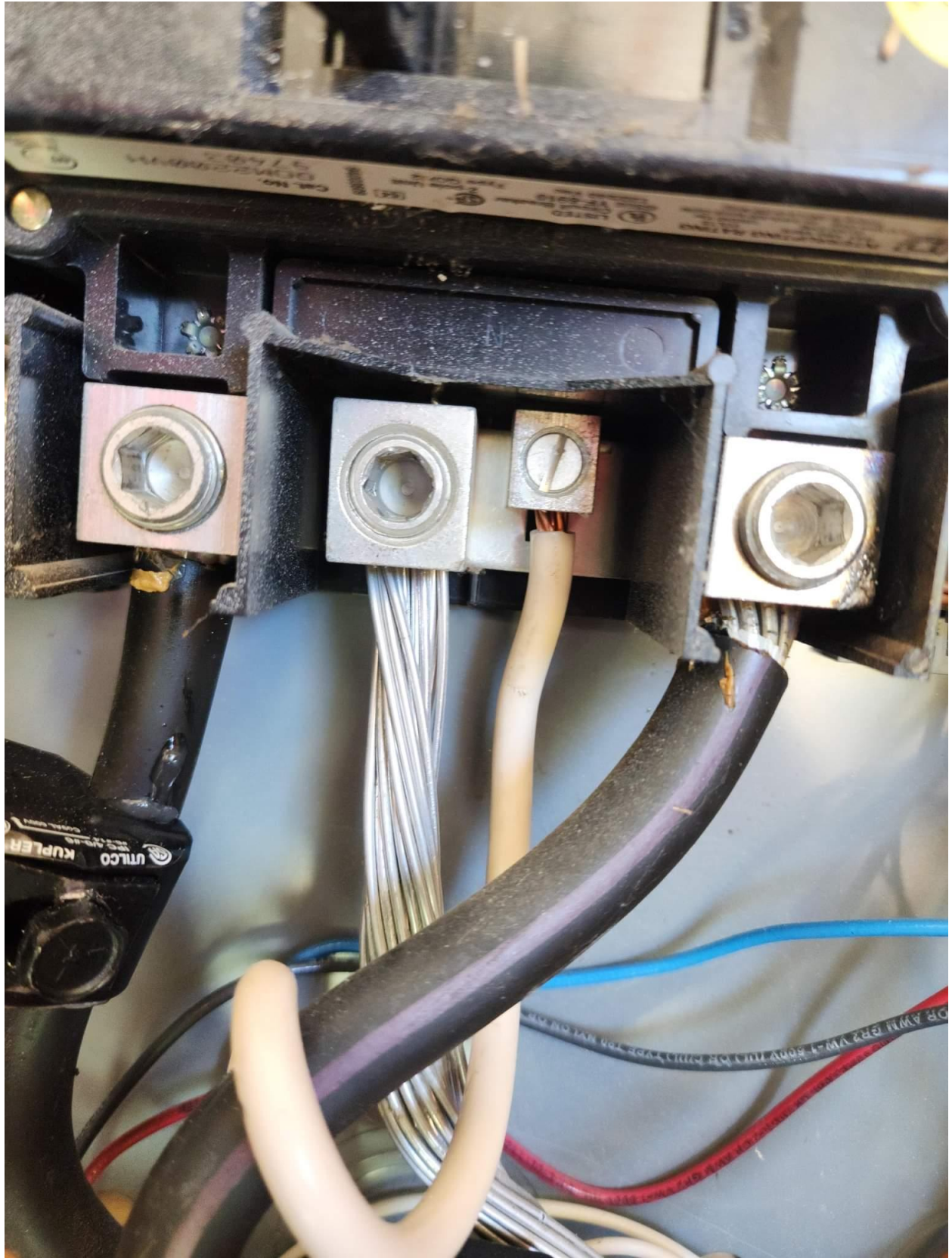


⚠ DANGER NO D
SHA
DURING MAY RESULT IN PERM

⚠ DANGER NO D
SHA
DURING MAY RESULT IN PERM













CAUTION: SOLAR CIRCUIT

WARNING
PV SOURCE CIRCUIT

