



Handwritten yellow label on a wire: 120/240V

10 kA
120/240V

10 kA
120/240V

10 kA
120/240V

10 kA
120/240V

10 kA
120V

10 kA
120V

SQUARE D
by Schneider Electric
TYPE QOP
QO115PCAFI
UL LISTED SF
C.B./
COMBINATION
AFCI
ISSUE NO. DP-3640
HACR Type
60 Hz
Al/Cu S1 62

SQUARE D
by Schneider Electric
TYPE QOP
QO115PCAFI
UL LISTED SF
C.B./
COMBINATION
AFCI
ISSUE NO. DP-3640
HACR Type
60 Hz
Al/Cu S1 62

SQUARE D
by Schneider Electric
TYPE QOP
QO115PCAFI
UL LISTED SF
C.B./
COMBINATION
AFCI
ISSUE NO. DP-3640
HACR Type
60 Hz
Al/Cu S1 62





15

15

15

40

O/OFF

O/OFF

O/OFF

O/OFF

10 kA
120V~

10 kA
120V~

10 kA
120V~

10 kA
120/240V~

SQUARE D
by Schneider Electric
TYPE QOP
QO115PCAFI
UL LISTED
C.B./
COMBINATION
AFCI
ISSUE NO. DP-3640
HACR Type
60 Hz
Al/Cu


SQUARE D
by Schneider Electric
TYPE QOP
QO115PCAFI
UL LISTED
C.B./
COMBINATION
AFCI
ISSUE NO. DP-3640
HACR Type
60 Hz
Al/Cu

SQUARE D
by Schneider Electric
TYPE QOP
QO115PCAFI
UL LISTED
C.B./
COMBINATION
AFCI
ISSUE NO. DP-3640
HACR Type
60 Hz
Al/Cu



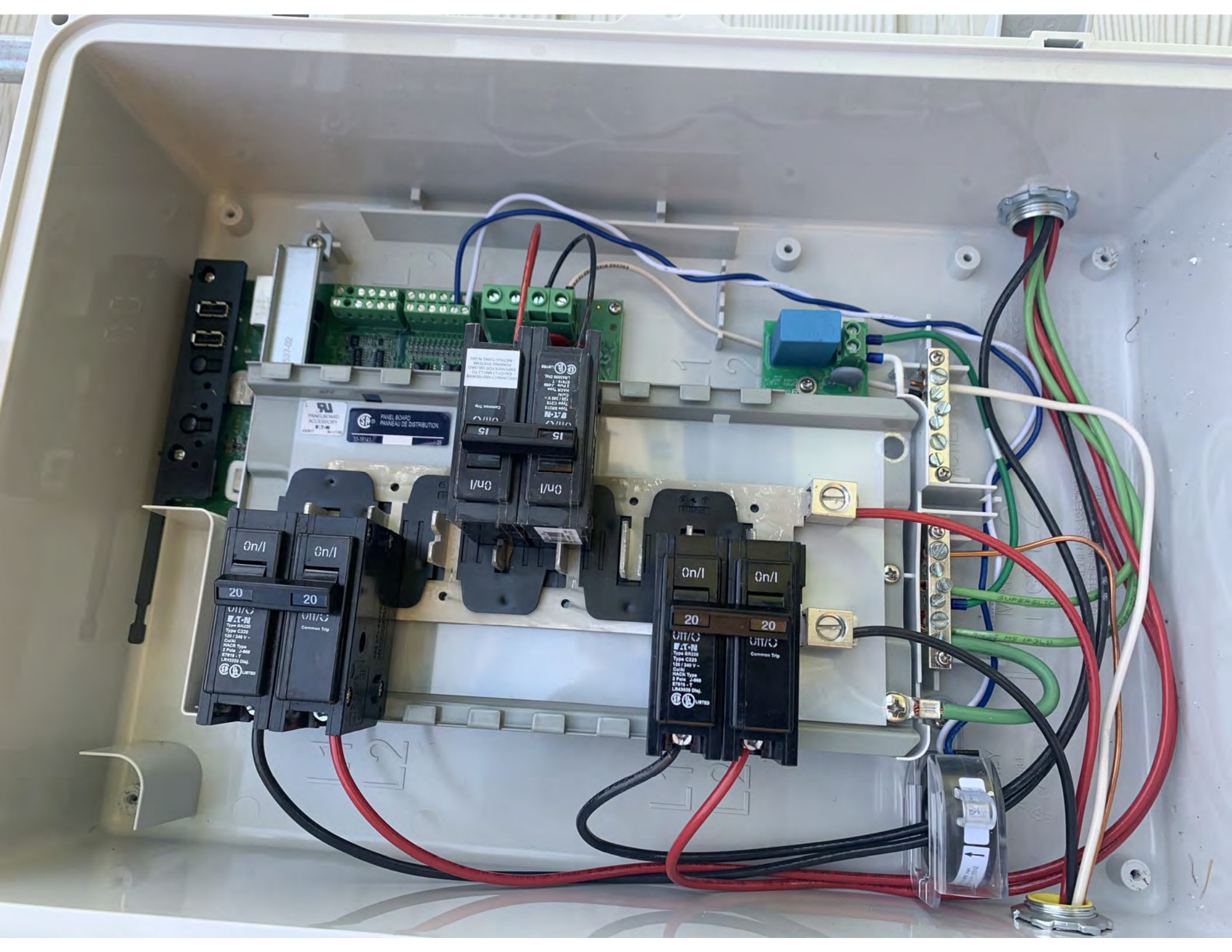
 **LEGACY POWER**

⚠ WARNING
PHOTOVOLTIC SYSTEM
COMBINER PANEL
DO NOT ADD LOADS

 **ENPHASE**

PHOTOVOLTIC
SOURCE





20 20
Common Trip
UL LISTED
Type Q120
Type C20
120/240 V
Circuit Type
2 Pole, 240V
EP110 - T
L140002 046

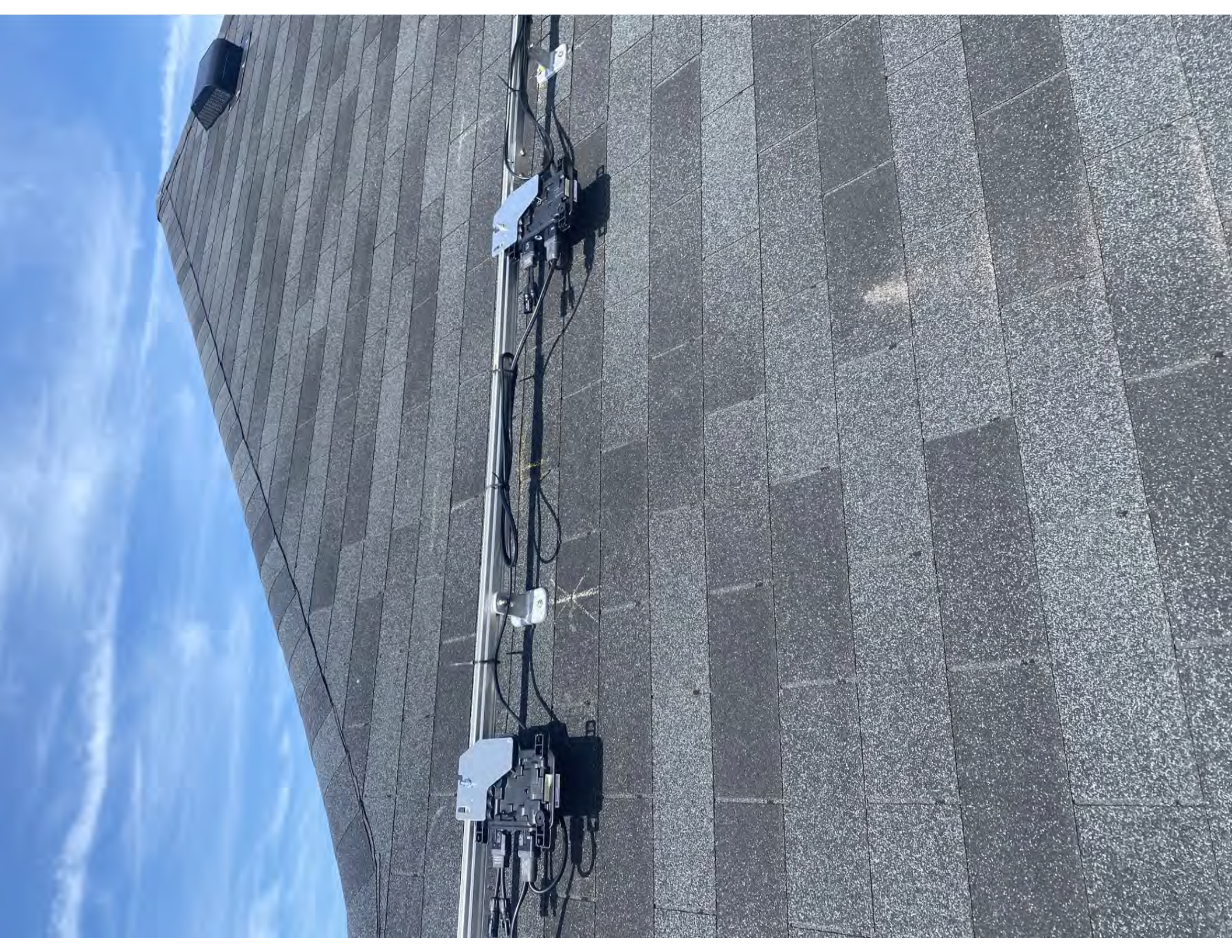
15 15
Common Trip
UL LISTED
Type Q120
Type C20
120/240 V
Circuit Type
2 Pole, 240V
EP110 - T
L140002 046

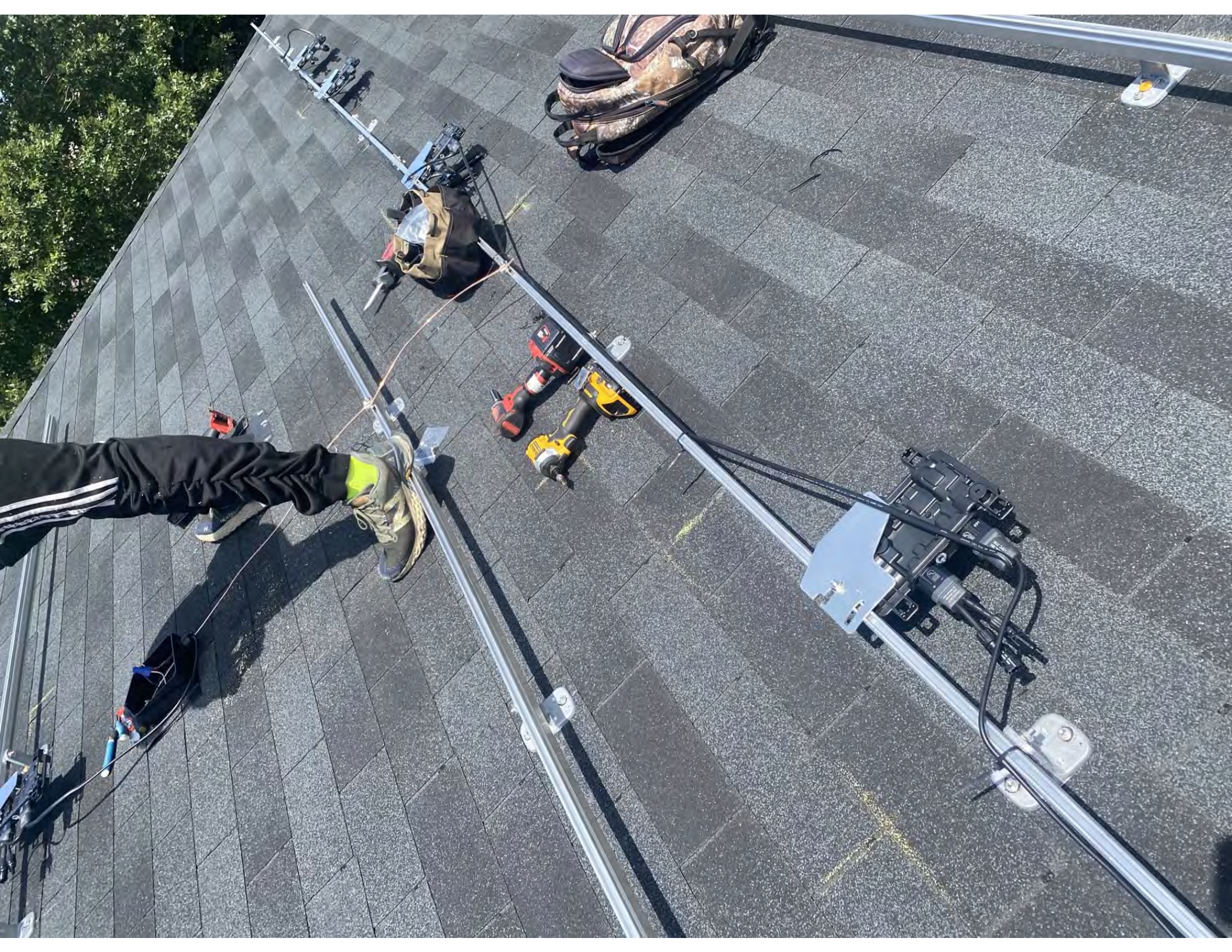
20 20
Common Trip
UL LISTED
Type Q120
Type C20
120/240 V
Circuit Type
2 Pole, 240V
EP110 - T
L140002 046

PANEL BOARD
PANEAU DE DISTRIBUTION

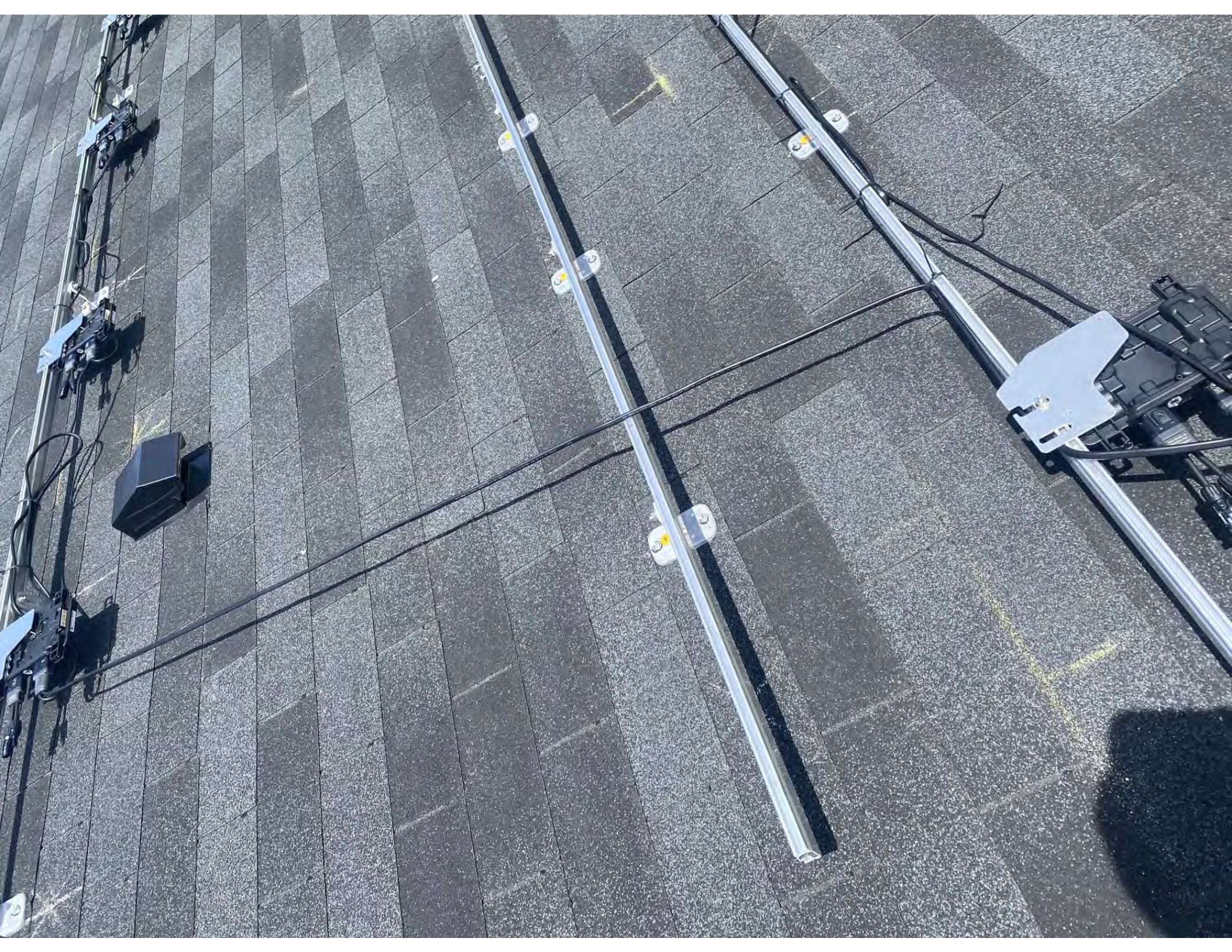
Terminal block with multiple screw terminals for wire connections.

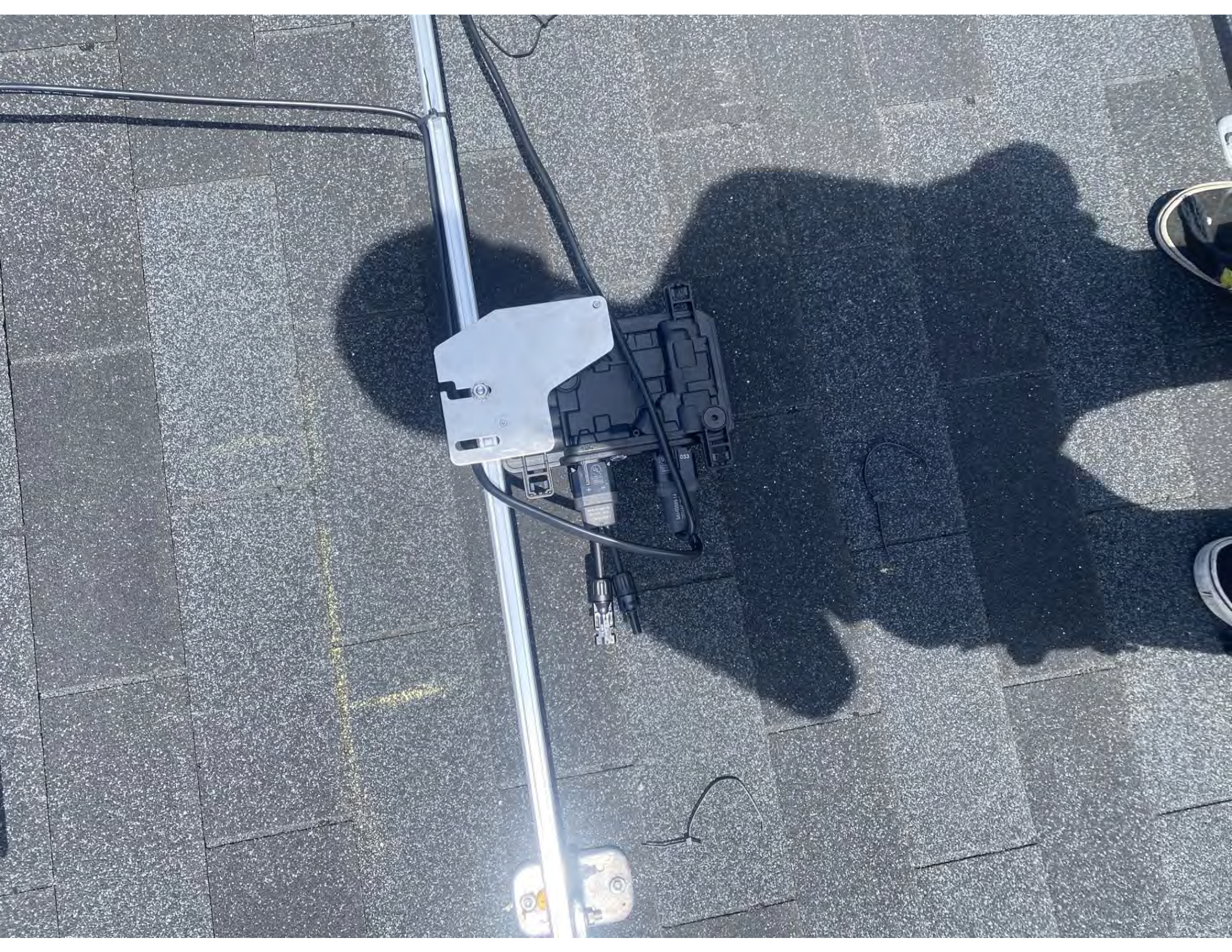


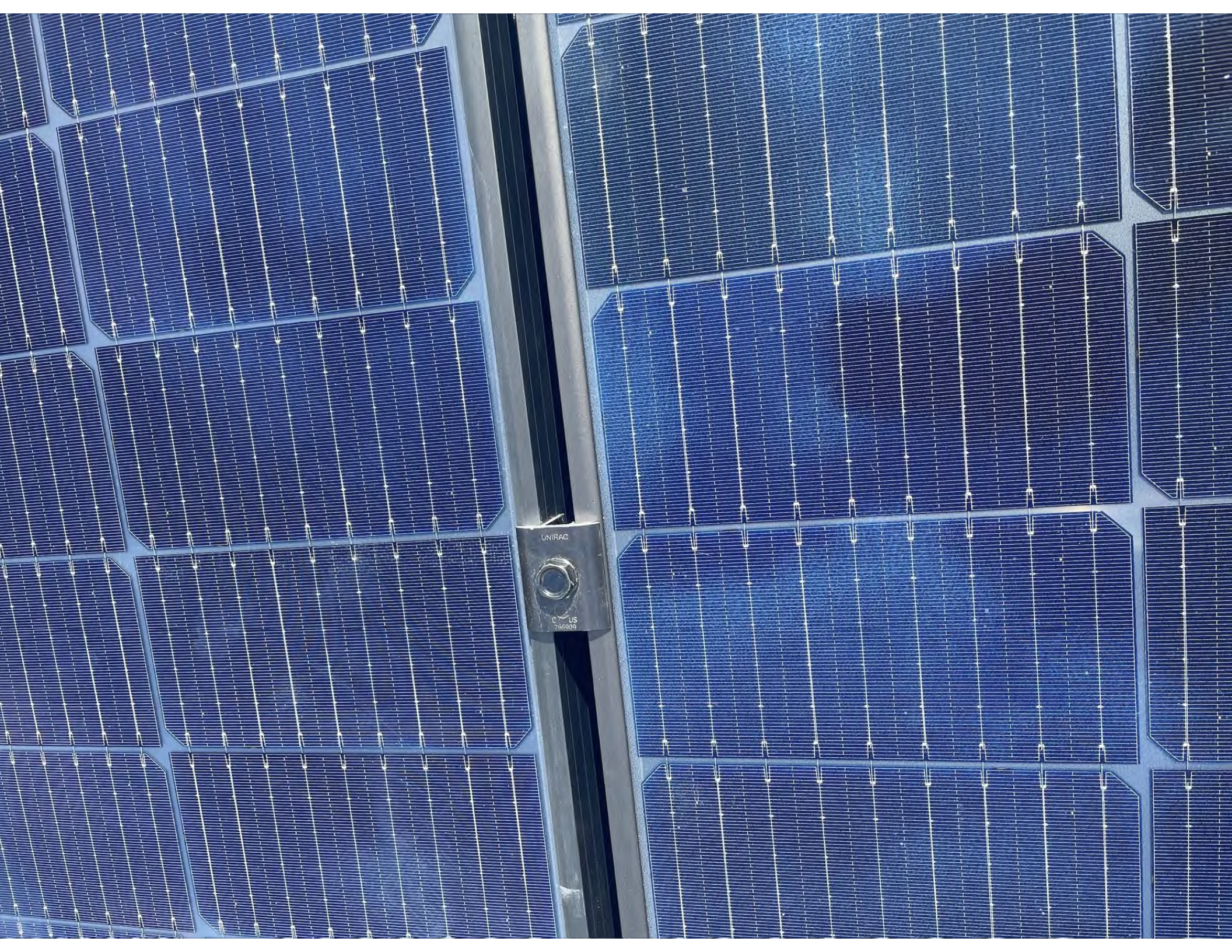








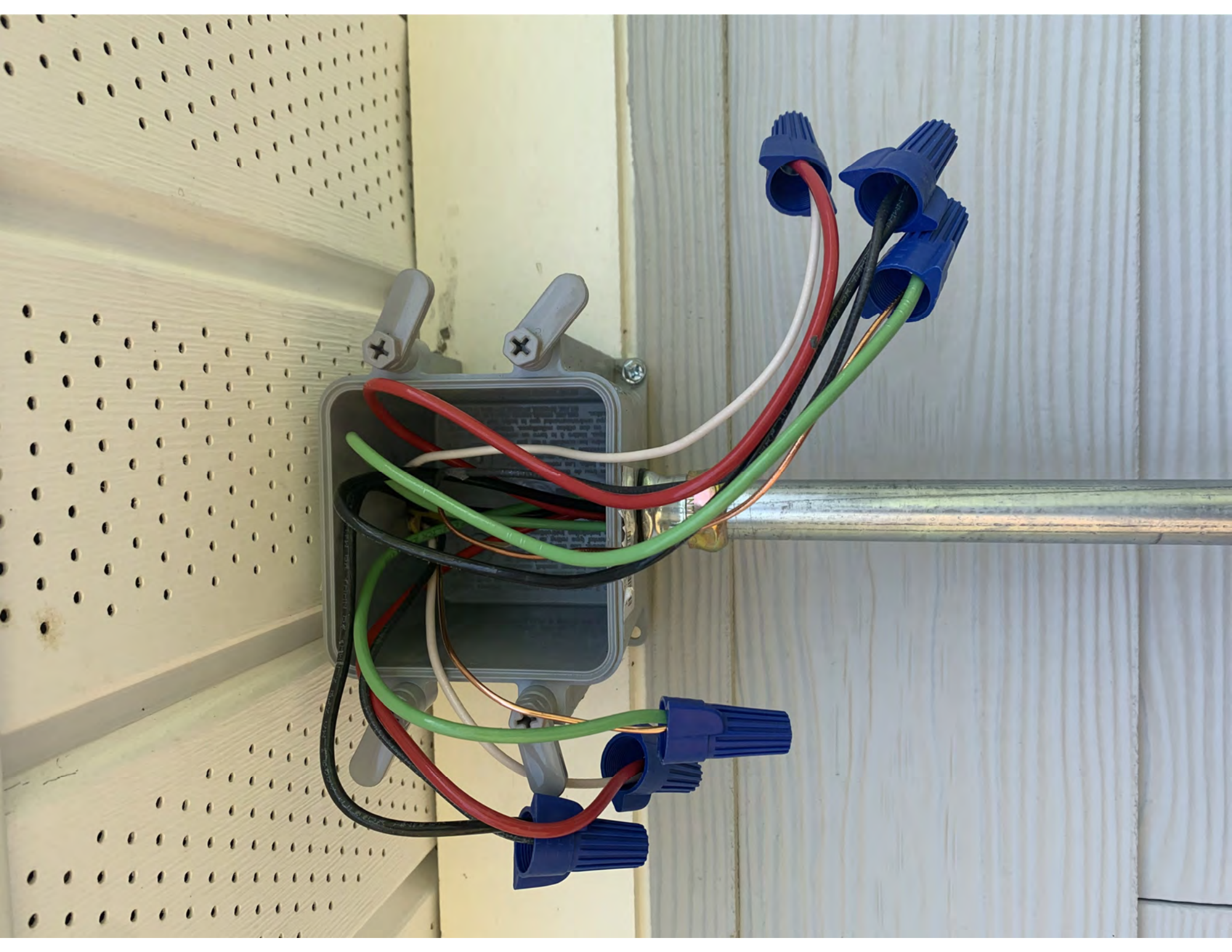




UNIRAC

© US

286909

















← Devices & Array

Connected to ENVOY_162495. Don't move your device away from IQ Gateway.



IQ Gateway >

202205162495

IQ Microinverters & Array >

- ✓ Scanned : 21/21
- ✓ Detected : 21/21
- ✓ Communicating : 21/21
- ✓ Array created : 1
- ✓ Array assigned : 1
- ✓ Producing power : 21/21
- ✓ Profile set : 21/21 (IEEE 1547 default)

ADD DEVICE



Systems



Dashboard

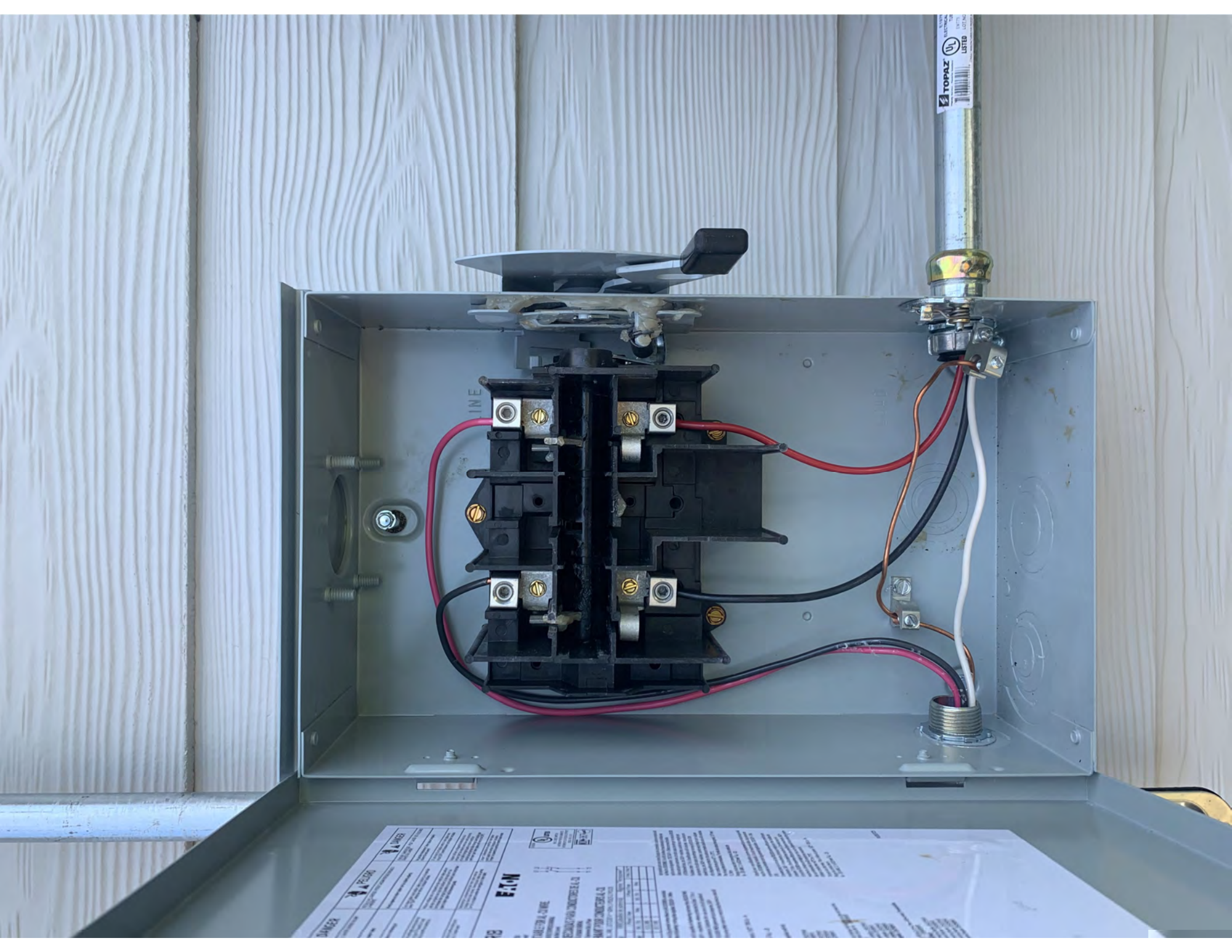


Support



Menu





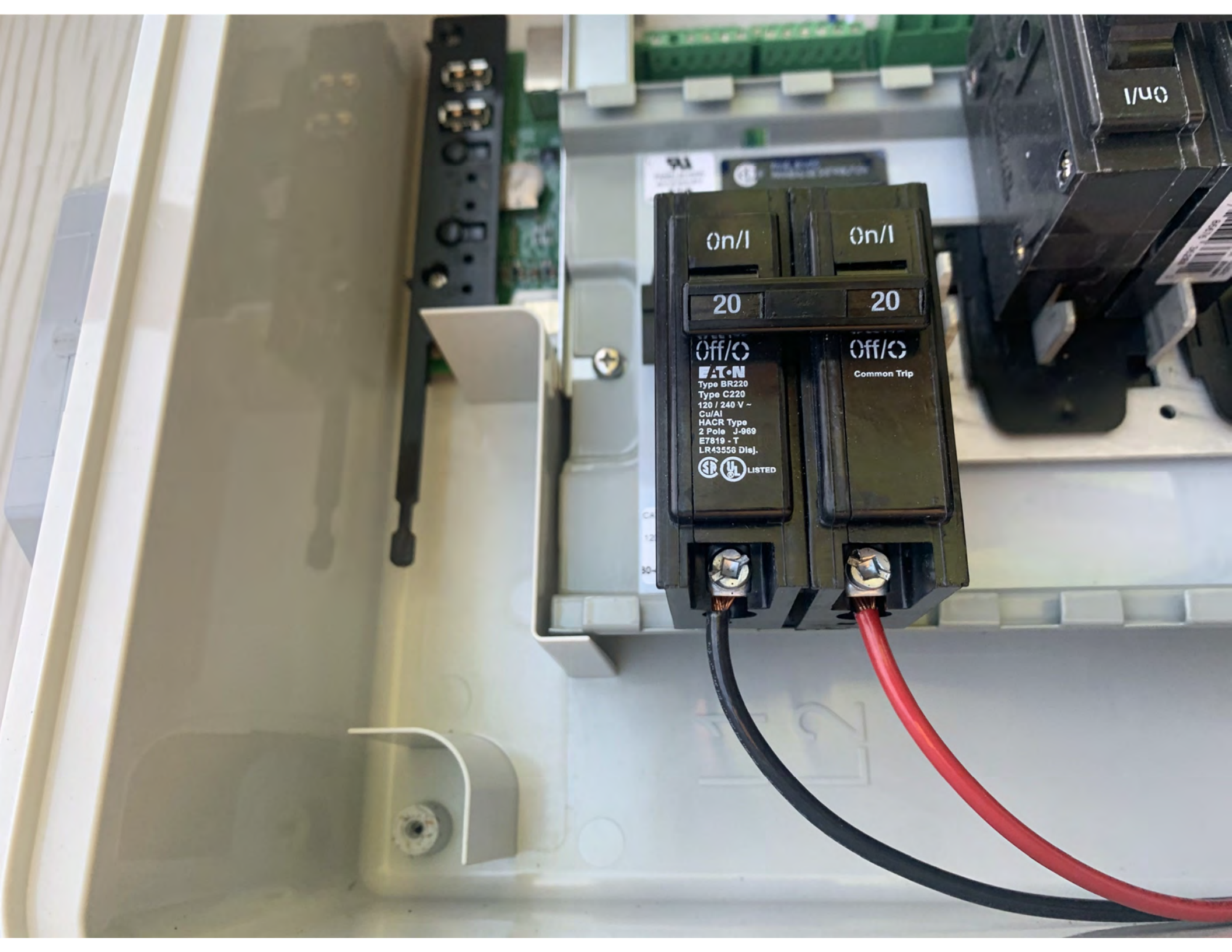
DANGER **WARNING** **CAUTION**

EX-10N

TERMINAL	WIRE SIZE	AMPACITY
MAIN	1/2" - 1/4"	100
SUB	1/8" - 1/4"	100

... (rest of the label text is illegible) ...

TOPAZ
ELECTRICAL
LISTED
UL



On/I

On/I

20

20

Off/O

Off/O

Eaton
Type BR220
Type C220
120 / 240 V ~
Cu/Al
HACR Type
2 Pole J-989
E7819 - T
LR43556 Disj.

Common Trip

UL LISTED

On/I

CA
12
30

Enable Production Meter



Connected to ENVOY_162495. Don't move your device away from IQ Gateway.

Current Power Production

[View Live Status](#)

01 Sep 2022, 02:40:11 PM

5.97 kW

L1(A)

2.99 kW	3.02 kVA	23.79 A	127.03 Vrms	0.99 PF
---------	----------	---------	-------------	---------

L2(B)

2.99 kW	3.02 kVA	23.79 A	126.76 Vrms	0.99 PF
---------	----------	---------	-------------	---------

Do you want to enable Production Meter?

ENABLE PRODUCTION METER

NOT NOW



Systems



Dashboard



Support



Menu



Fayas Front H...

LOAD CENTER
WIRE RANGE (AWG)
60



On/I

On/I

20

20

Off/O

Off/O

EATON
Type BR220
Type C220
120 / 240 V ~
Cu/Al
HACK Type
2 Pole J-969
E7819 - T
LR43556 Disj.
SP UL LISTED

Common Trip







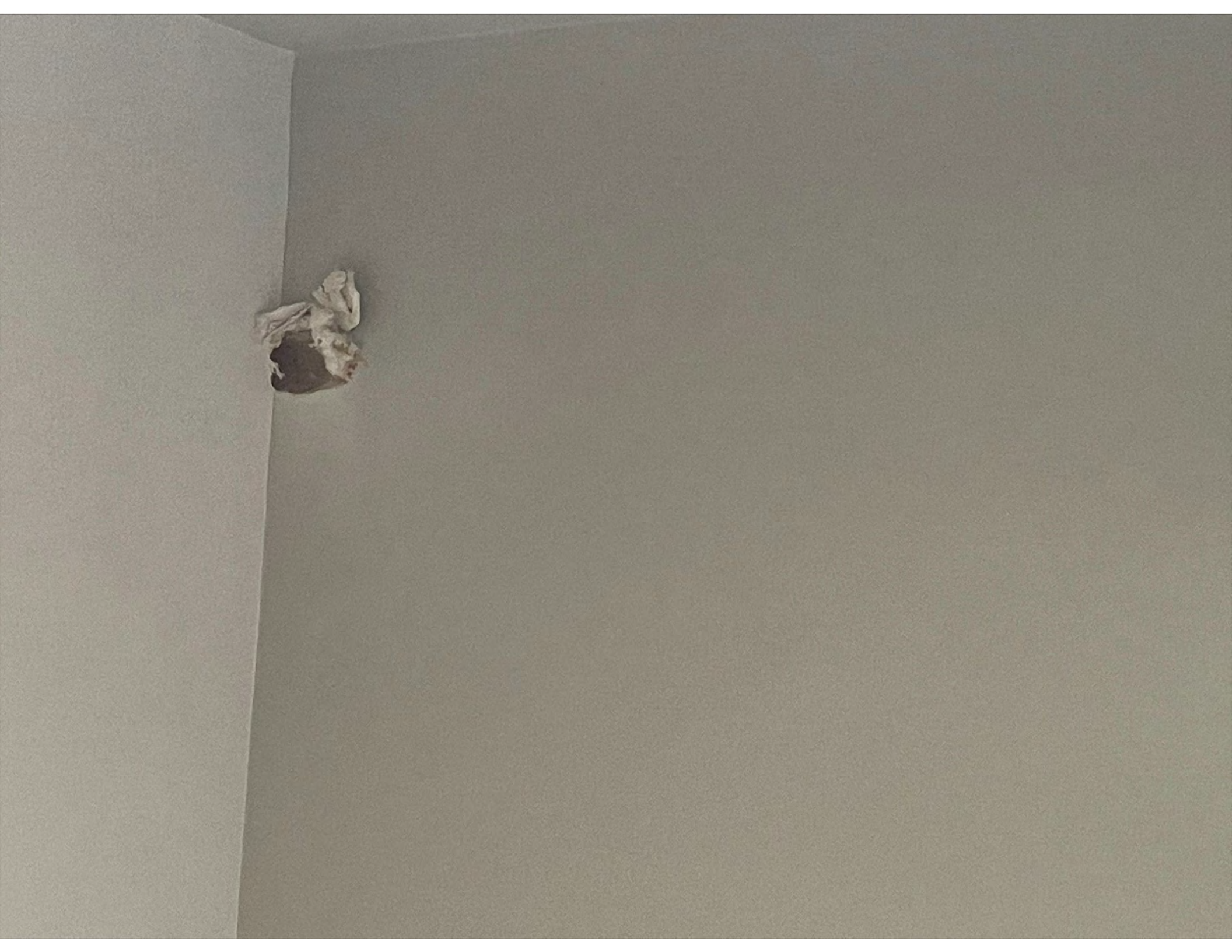


202225061941
202225057257
202225071150
202225067458
202225070068
202225071886
202225068438

*Bill Gavlier
84 Windy farm de*

202225056441
202225069372
202225070446
202225070693
202225069583
202225070638
202225070494
202225063418
202225065838
20222508120
202225069673

MACHINE WASH
WITH LIKE COLORS
DO NOT USE FABRIC
SOFTENERS, STARCH
NON-CHLORINE BLEACH
WHEN NEEDED.
PLEASE CAREFULLY
RECORD



- SITE NOTES**
- A LADDER SHALL BE IN PLACE FOR INSPECTION IN COMPLIANCE WITH OSHA REGULATIONS.
 - THE PV MODULES ARE CONSIDERED NON-COMBUSTIBLE AND THIS SYSTEM IS AN UTILITY INTERACTIVE SYSTEM WITH NO STORAGE BATTERIES.
 - THE PV MODULES SHALL NOT OBSTRUCT ANY PLUMBING, MECHANICAL, OR BUILDING ROOF VENTS.
 - THE SOLAR PV INSTALLATION SHALL NOT OBSTRUCT ANY PLUMBING, MECHANICAL, OR BUILDING ROOF VENTS.
 - PROPER ACCESS AND WORKING CLEARANCE AROUND EXISTING AND PROPOSED ELECTRICAL EQUIPMENT WILL BE PROVIDED AS PER SECTION [NEC 110.26]



ROOF #1
 (10) APTOS SOLAR DNA-144-MF26-440 (440W) MODULES
 (E) UTILITY METER
 (E) MAIN SERVICE PANEL
 (N) NON FUSED AC DISCONNECT
 (N) ENPHASE IQ COMBINER 3

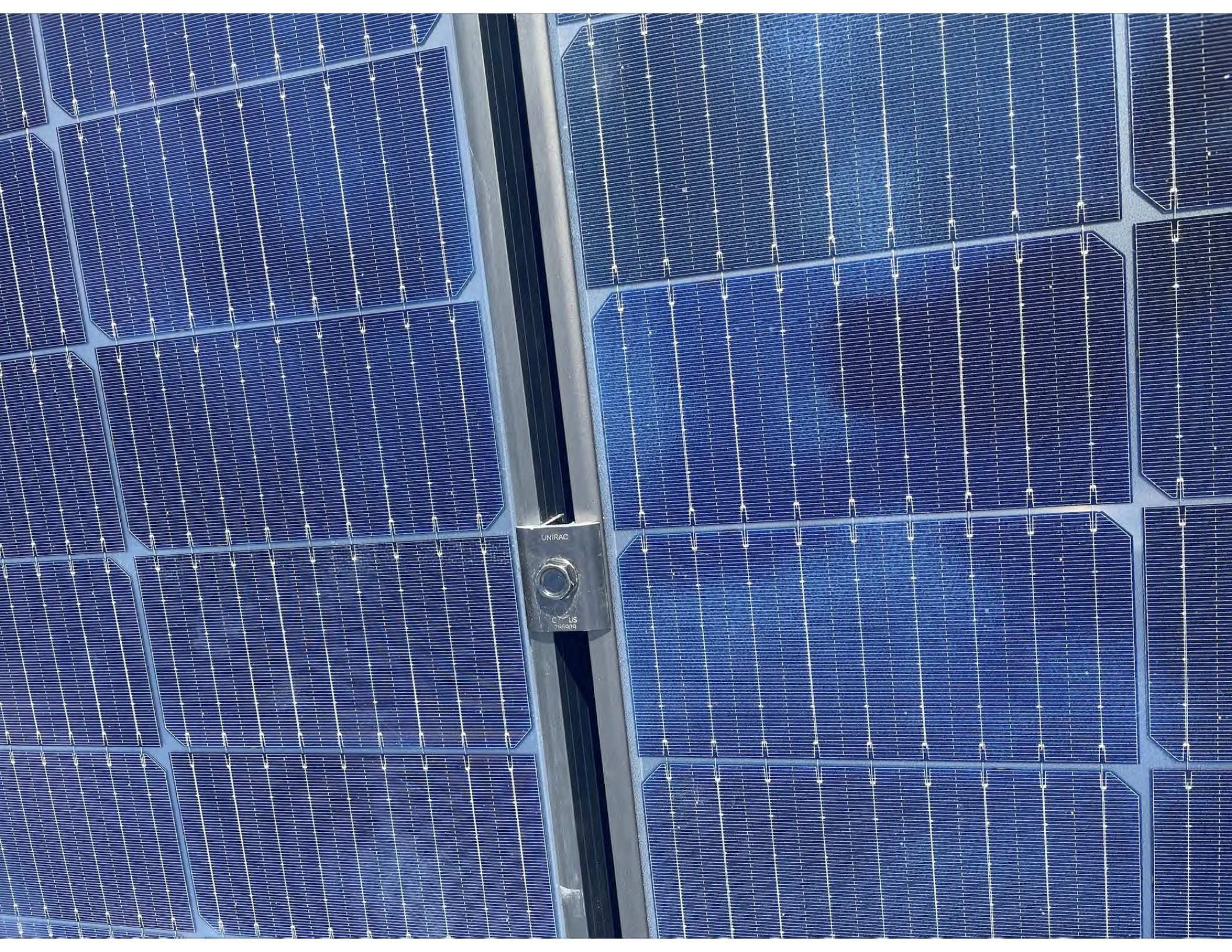


Flambeau®

ELE









UNIRAC

UNIRAC
US
266802











