



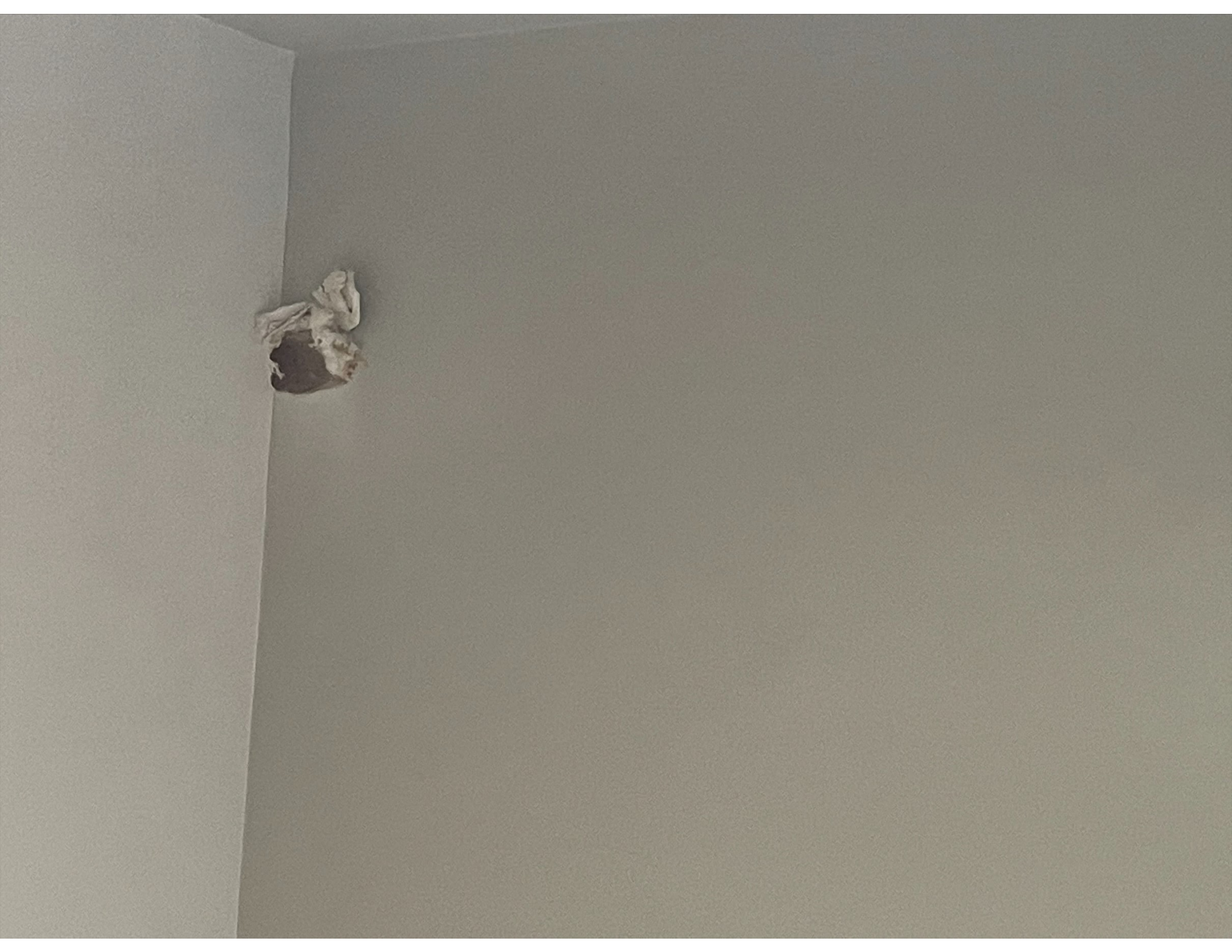


MACHINE WASH
WITH LIQUID DETERGENT
DO NOT USE FABRIC
SOFTENERS, STAIN
REMOVERS OR
NON-CHLORINE BLEACH
WHEN NEEDED.
PLEASE CAREFULLY
RECYCLE

202225061941
202225057257
202225071150
202225067458
202225070068
202225071884
202225071886
202225068438

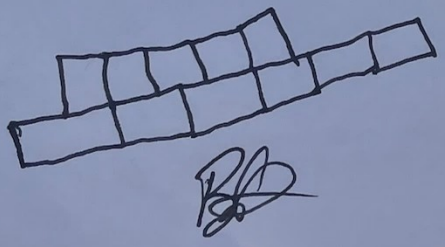
Bill Gavlier
84 Windy farm Dr

202225056441
202225069372
202225070446
202225070693
202225069583
202225070638
202225070494
202225063418
202225065838
202225081120
202225069673



SITE NOTES

- A LADDER SHALL BE IN PLACE FOR INSPECTION IN COMPLIANCE WITH OSHA REGULATIONS.
- THE PV MODULES ARE CONSIDERED NON-COMBUSTIBLE AND THIS SYSTEM IS AN UTILITY INTERACTIVE SYSTEM WITH NO STORAGE BATTERIES.
- THE PV MODULES SHALL NOT OBSTRUCT ANY PLUMBING, MECHANICAL, OR BUILDING ROOF VENTS.
- THE SOLAR PV INSTALLATION SHALL NOT OBSTRUCT ANY PLUMBING, MECHANICAL, OR BUILDING ROOF VENTS.
- PROPER ACCESS AND WORKING CLEARANCE AROUND EXISTING AND PROPOSED ELECTRICAL EQUIPMENT WILL BE PROVIDED AS PER SECTION (NEC 110.26)



(10) APTOS SOLAR DNA-144-MF26-440 (440W) MODULES

- (E) UTILITY METER
- (E) MAIN SERVICE PANEL
- (N) NON FUSED AC DISCONNECT
- (N) ENPHASE IQ COMBINER 3

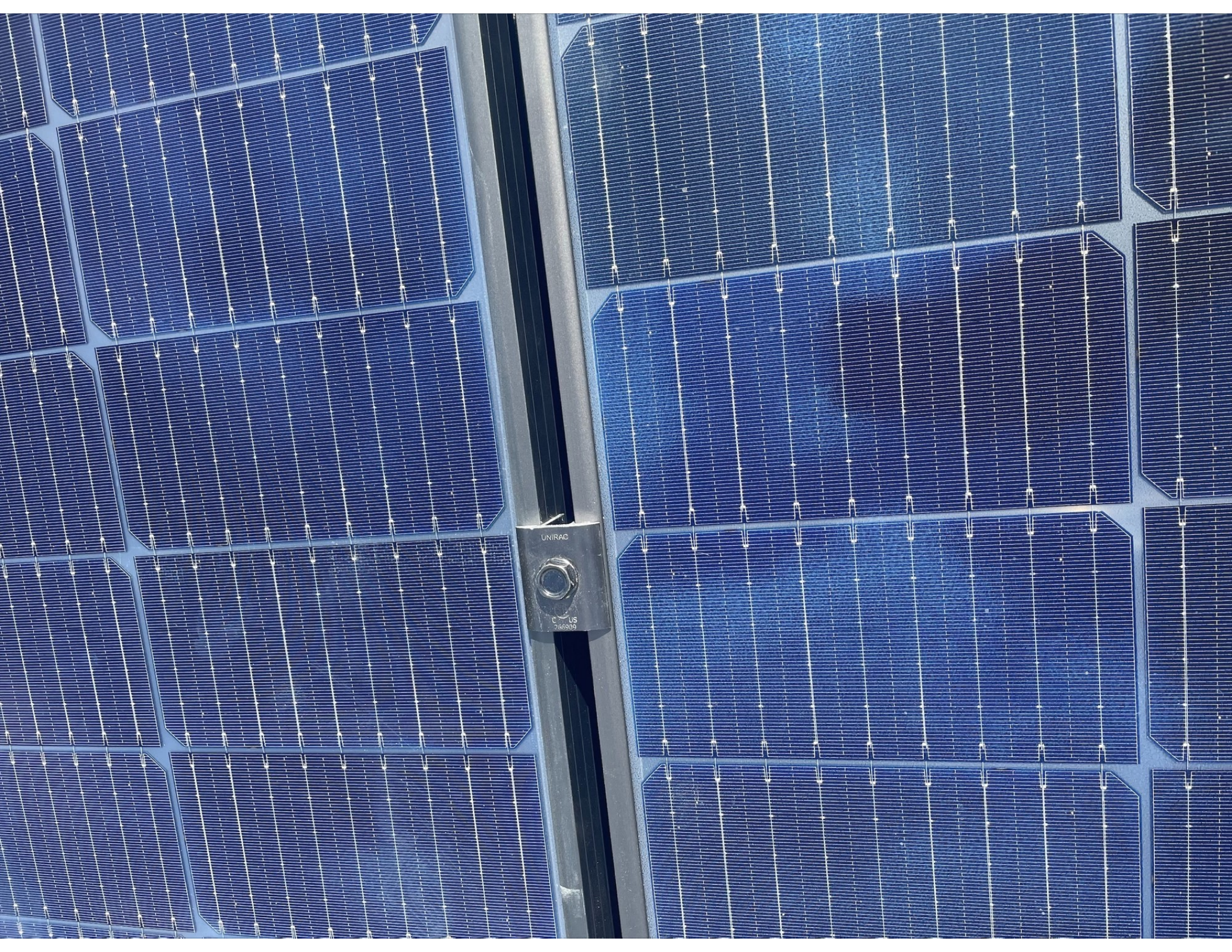


Flambeau®

ELE







UNIRAC

MADE IN US

286909



UNIRAC

US
266802



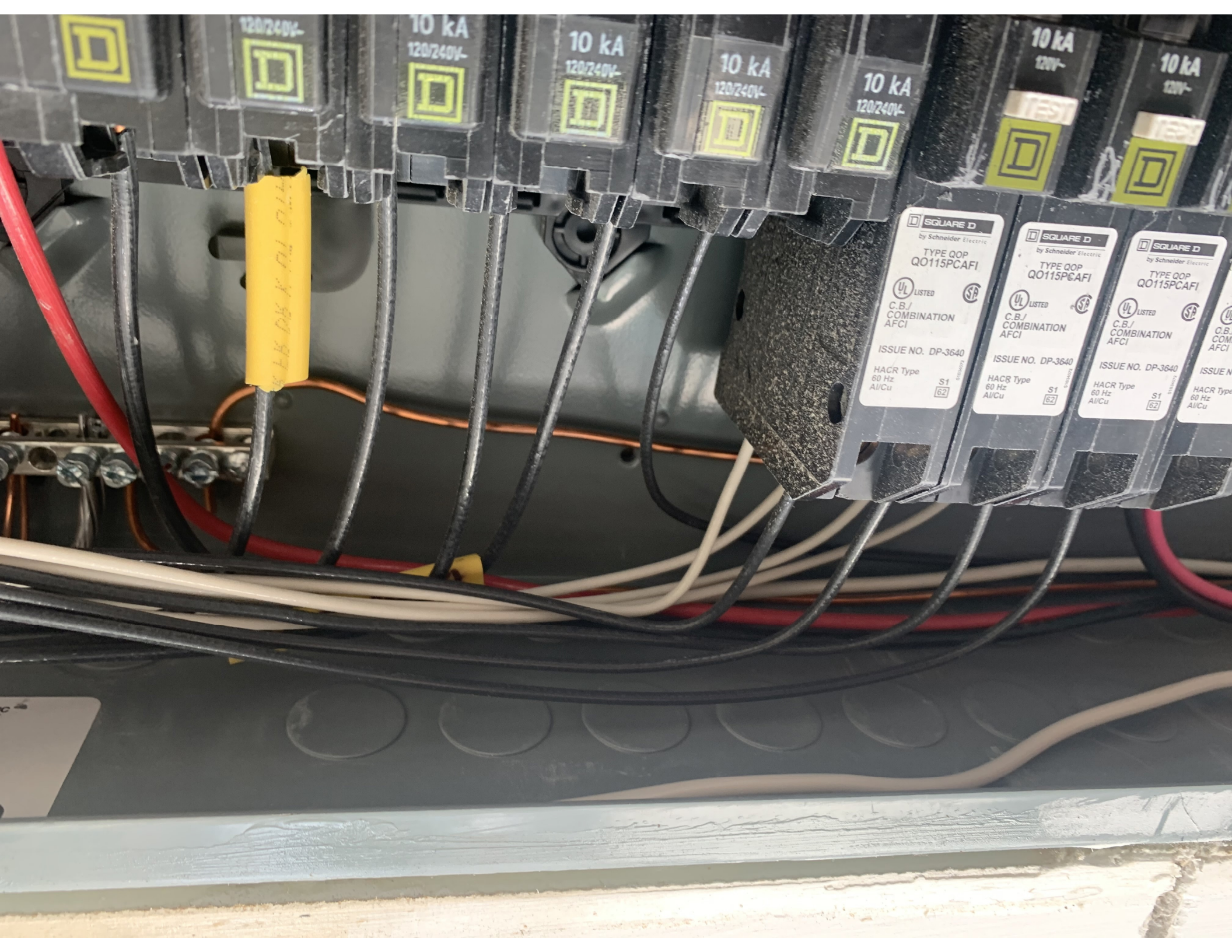












120/240V-

10 kA
120/240V-

10 kA
120/240V-

10 kA
120/240V-

10 kA
120/240V-

10 kA
120V-

10 kA
120V-

710 70 k 30 47

SQUARE D
by Schneider Electric

TYPE QOP
QO115PCAFI

UL LISTED

SP

C.B./
COMBINATION
AFCI

ISSUE NO. DP-3640

HACR Type
60 Hz
Al/Cu

S1

62

SQUARE D
by Schneider Electric

TYPE QOP
QO115PCAFI

UL LISTED

SP

C.B./
COMBINATION
AFCI

ISSUE NO. DP-3640

HACR Type
60 Hz
Al/Cu

S1

62

SQUARE D
by Schneider Electric

TYPE QOP
QO115PCAFI

UL LISTED

SP

C.B./
COMBINATION
AFCI

ISSUE NO. DP-3640

HACR Type
60 Hz
Al/Cu

S1

62

ISSUE NO. DP-3640

HACR Type
60 Hz
Al/Cu

S1

62



15

15

15

40

O/OFF

O/OFF

O/OFF

O/OFF

10 kA
120V~

10 kA
120V~

10 kA
120V~

10 kA
120/240V~



SQUARE D
by Schneider Electric
TYPE QOP
QO115PCAFI
UL LISTED SP
C.B./COMBINATION
AFCI
ISSUE NO. DP-3640
HACR Type S1
60 Hz AI/Cu 62


SQUARE D
by Schneider Electric
TYPE QOP
QO115PCAFI
UL LISTED SP
C.B./COMBINATION
AFCI
ISSUE NO. DP-3640
HACR Type S1
60 Hz AI/Cu 62

SQUARE D
by Schneider Electric
TYPE QOP
QO115PCAFI
UL LISTED SP
C.B./COMBINATION
AFCI
ISSUE NO. DP-3640
HACR Type S1
60 Hz AI/Cu 62

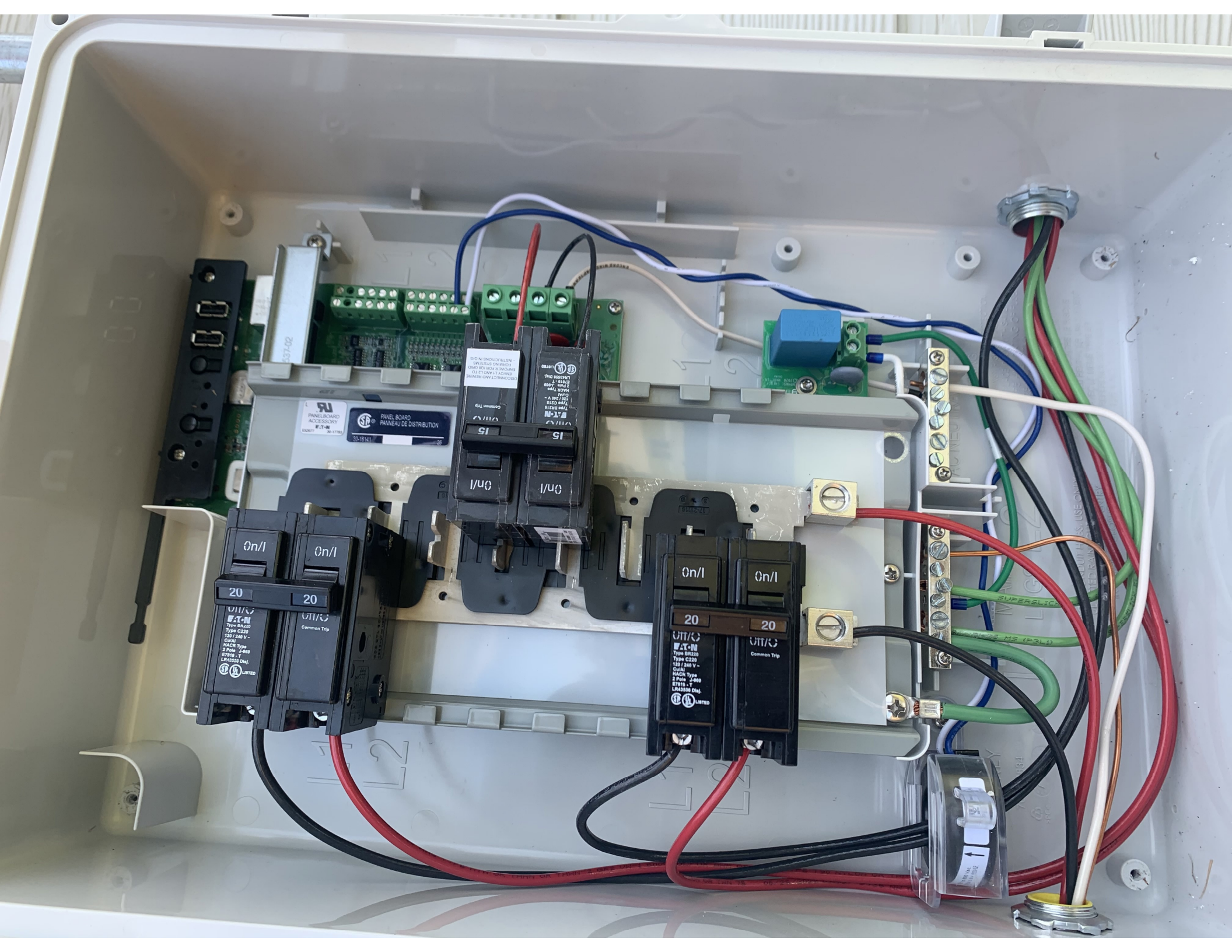


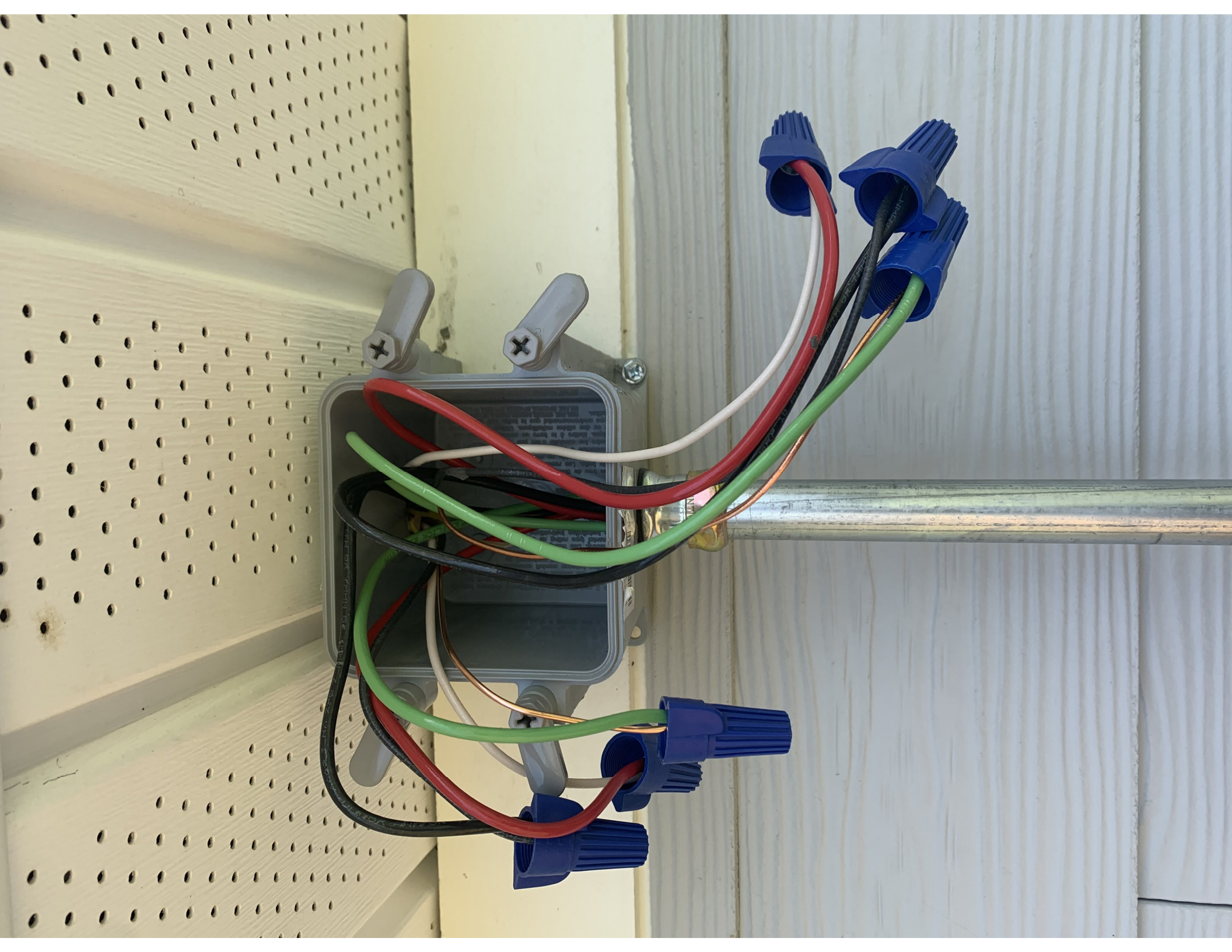
 **LEGACY POWER**

WARNING
⚠️ PHOTOVOLTAIC SYSTEM
COMBINER PANEL
DO NOT ADD LOADS

 **ENPHASE**

PHOTOVOLTAIC
SOURCE





← Devices & Array

Connected to ENVOY_162495. Don't move your device away from IQ Gateway.



IQ Gateway >

202205162495

IQ Microinverters & Array >

- ✓ Scanned : 21/21
- ✓ Detected : 21/21
- ✓ Communicating : 21/21
- ✓ Array created : 1
- ✓ Array assigned : 1
- ✓ Producing power : 21/21
- ✓ Profile set : 21/21 (IEEE 1547 default)

ADD DEVICE



Systems



Dashboard

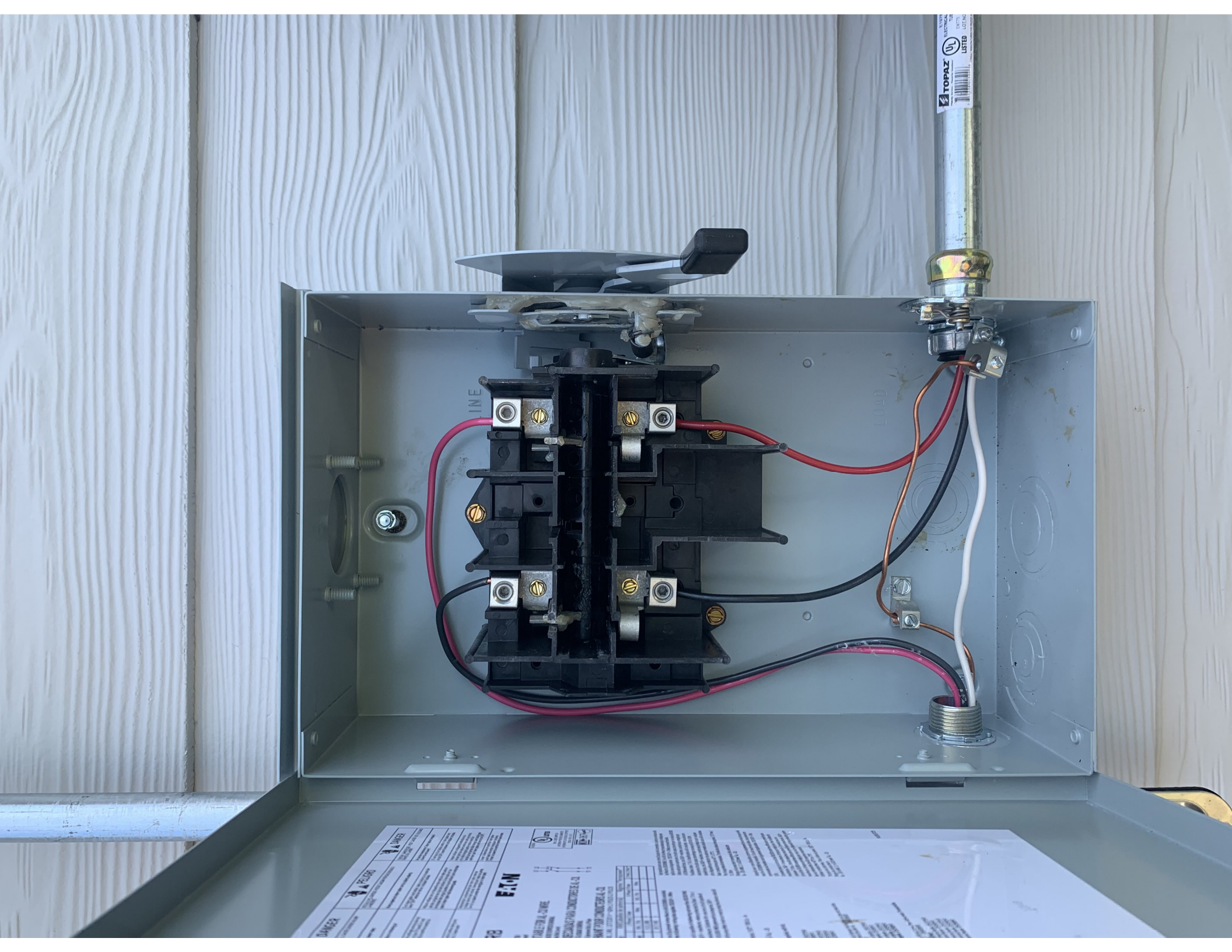


Support



Menu





LINE

LOAD

TOPAZ
ELECTRICAL
EQUIPMENT
LISTED
UL
ELECTRICAL
EQUIPMENT
LISTED
UL

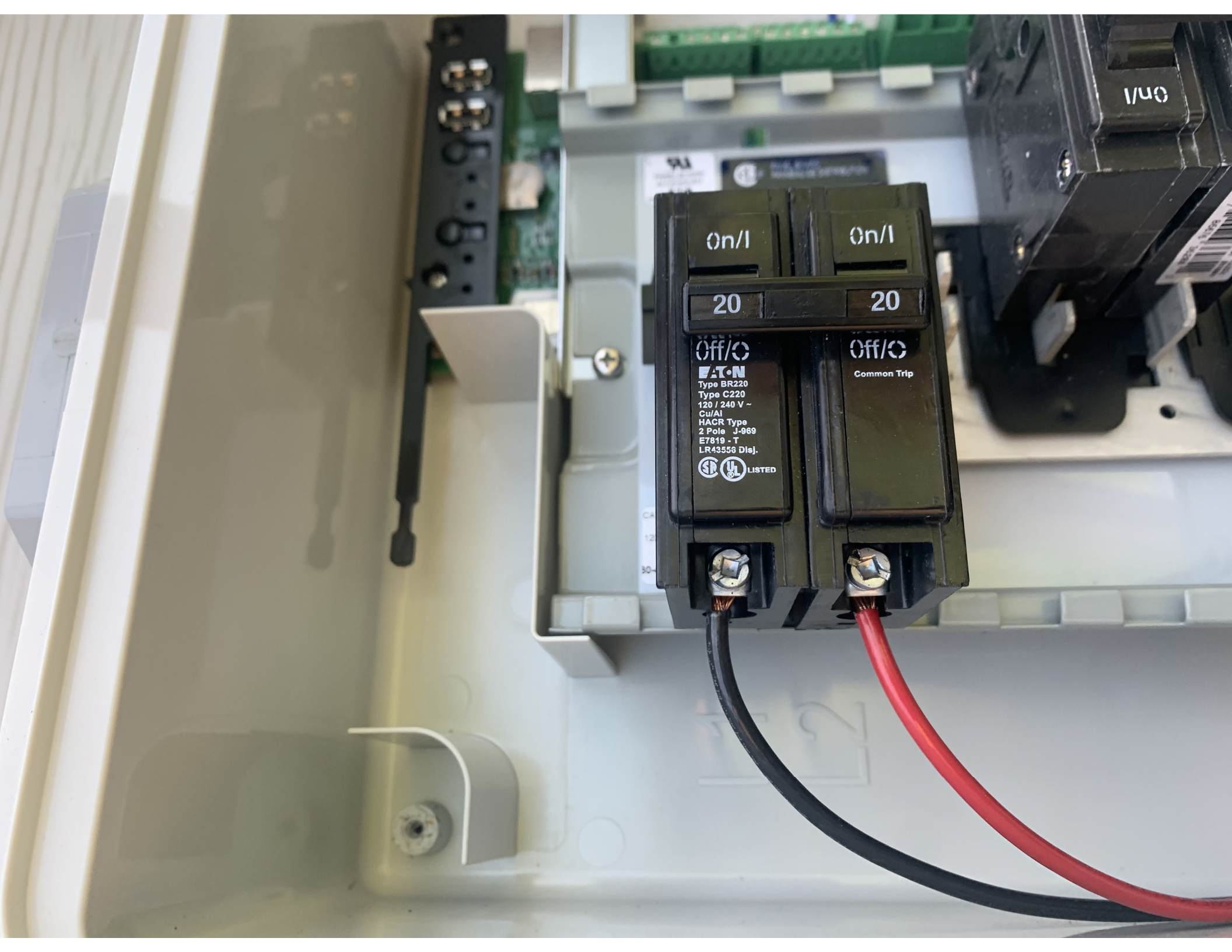
DANGER
WARNING
CAUTION

EX-ON

TECHNICAL SPECIFICATIONS

Model	Current Rating (A)	Voltage (V)	Power (W)
EX-ON-1	10	230	2300
EX-ON-2	15	230	3450
EX-ON-3	20	230	4600
EX-ON-4	25	230	5750
EX-ON-5	30	230	6900
EX-ON-6	35	230	8050
EX-ON-7	40	230	9200
EX-ON-8	45	230	10350
EX-ON-9	50	230	11500
EX-ON-10	55	230	12650
EX-ON-11	60	230	13800
EX-ON-12	65	230	14950
EX-ON-13	70	230	16100
EX-ON-14	75	230	17250
EX-ON-15	80	230	18400
EX-ON-16	85	230	19550
EX-ON-17	90	230	20700
EX-ON-18	95	230	21850
EX-ON-19	100	230	23000

EX-ON-100



On/I

On/I

20

20

Off/O

Off/O

Eaton
Type BR220
Type C220
120 / 240 V ~
Cu/Al
HACR Type
2 Pole J-989
E7819 - T
LR43558 Disj.

Common Trip



CA
12
30

On/I



Enable Production Meter



Connected to ENVOY_162495. Don't move your device away from IQ Gateway.

Current Power Production

[View Live Status](#)

01 Sep 2022, 02:40:11 PM

5.97 kW

L1(A)

2.99 kW	3.02 kVA	23.79 A	127.03 Vrms	0.99 PF
---------	----------	---------	-------------	---------

L2(B)

2.99 kW	3.02 kVA	23.79 A	126.76 Vrms	0.99 PF
---------	----------	---------	-------------	---------

Do you want to enable Production Meter?

ENABLE PRODUCTION METER

NOT NOW



Systems



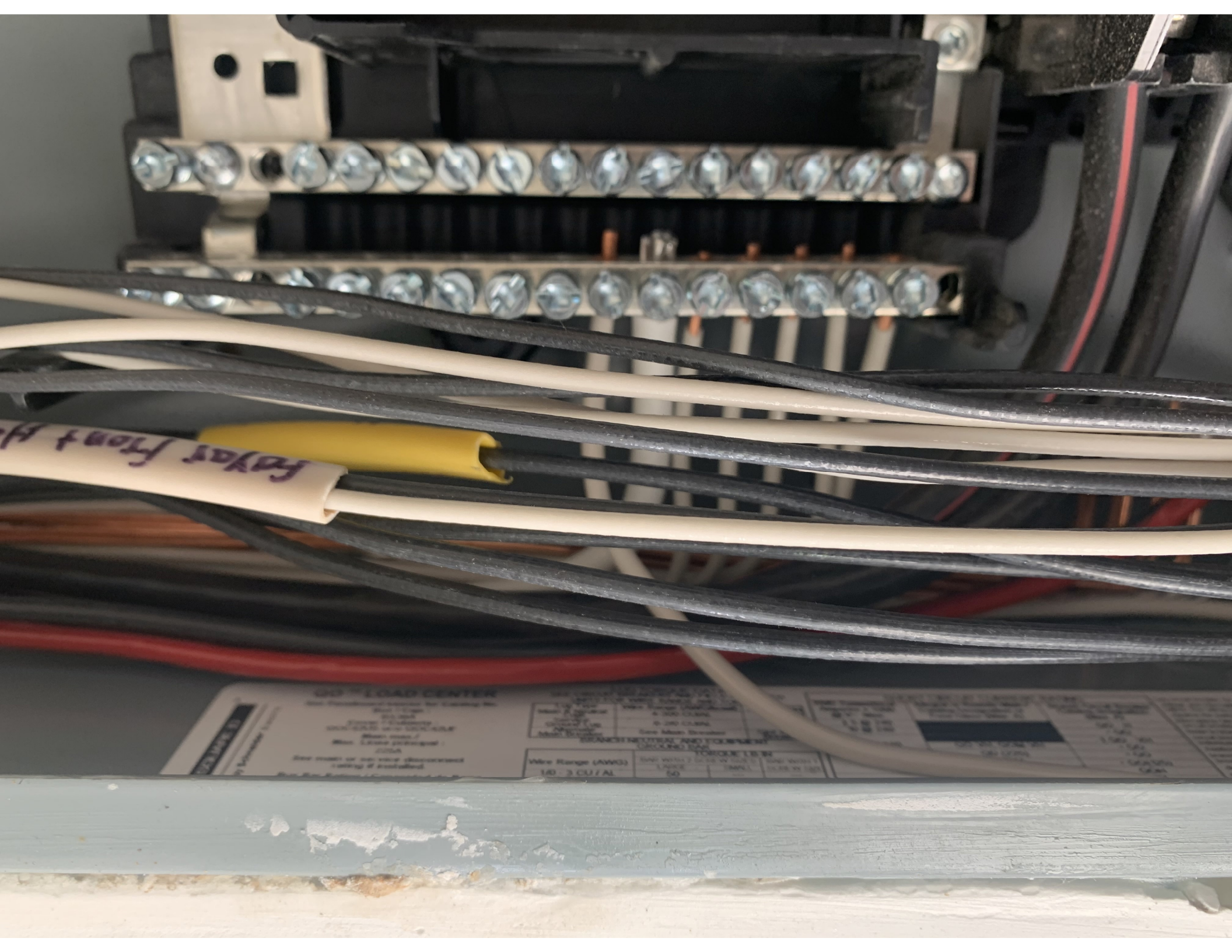
Dashboard



Support

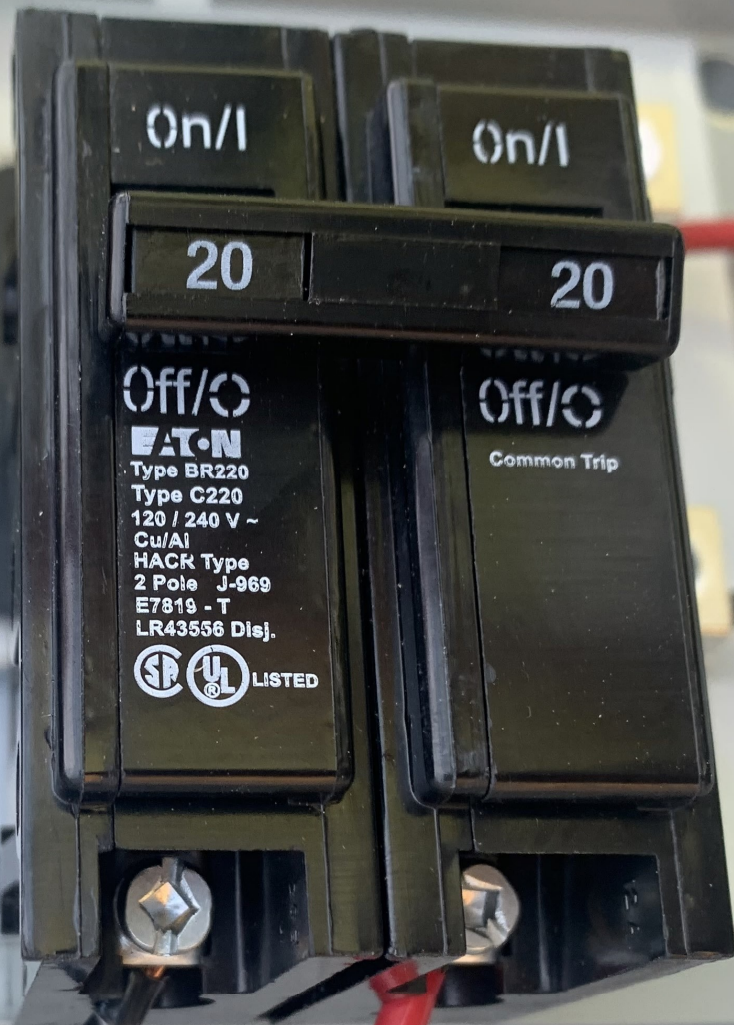


Menu



Foyas Front H...

LOAD CENTER
See Installation Manual for Loading No.
Max. Load
Branch Neutral and Equipment
Grounding Bus
WIRE RANGE (AWG)
10 3 CU / AL



On/I

On/I

20

20

Off/O

Off/O

EATON

Type BR220

Type C220

120 / 240 V ~

Cu/Al

HACR Type

2 Pole J-969

E7819 - T

LR43556 Disj.



LISTED

Common Trip



