

PV Link S2502 -05

Photovoltaics
making power

Power: 219W

PV Voltage: 24.4V

E-total: 1.9kWh


REbus


Inverter





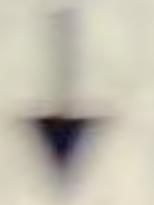


OFF

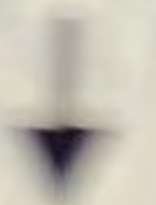
RE3



RE4



RE2



PIKA ENERGY

RE3+ RE3- RE4+ RE4- RE2



RCP
0078DA5

ICM

E305
TS
30
J17

CTS

ATS

TRANS

BEACON

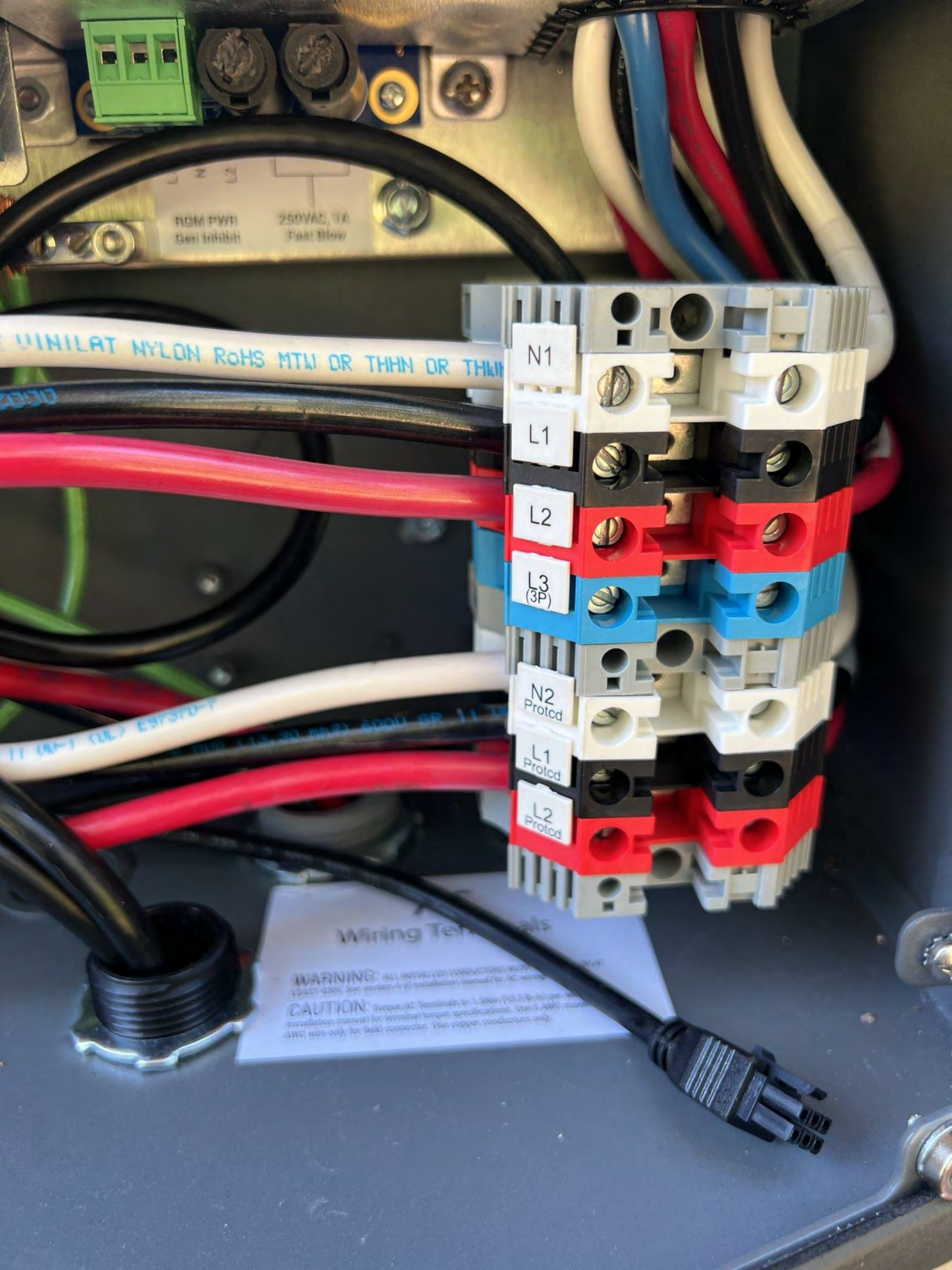
URC351070208
TIME 2138

00460 51 EASY SLIDE UIM

00460 51 EASY SLIDE UIM

RoHS MTU OR THHN OR THHN-2

11 IN-1 (UL) E97370-7



RDM PWR
Gen Inhibit

250VAC, 1%
Fast Blow

VINILAT NYLON RoHS MTW OR THHN OR THHN

N1

L1

L2

L3
(3P)

N2
Protcd

L1
Protcd

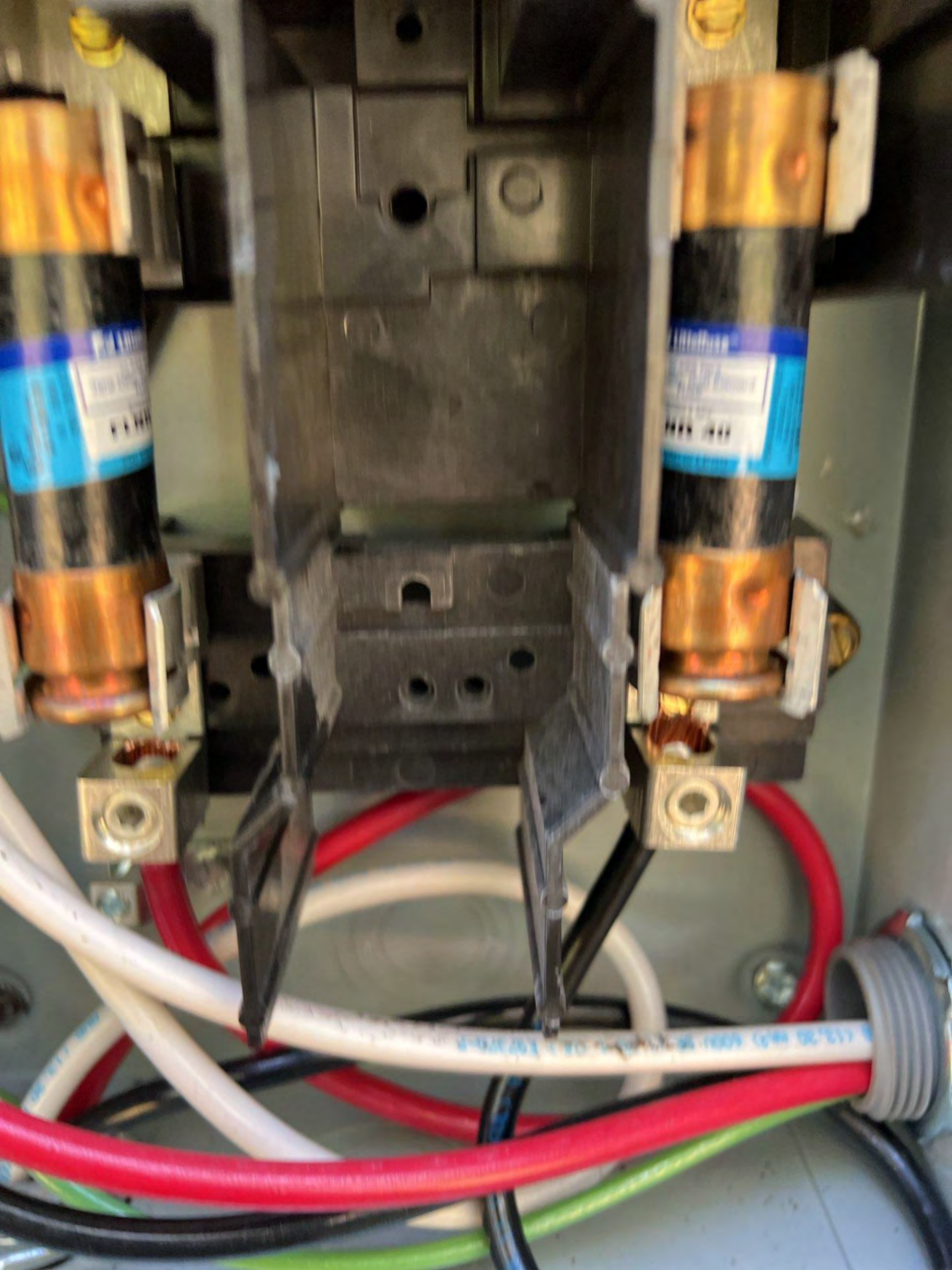
L2
Protcd

ESF370-F

Wiring Terminal

WARNING: ALL INSTALLED WIRING SHOULD BE AT LEAST 48V. See section 4 of installation manual for AC wiring.
CAUTION: Torque AC terminals to 1.5Nm (10.8 in-lb) per installation manual for terminal torque specifications. Use 5 AWG strand AWC wire with the bolt connector. Use copper conductors only.









WARNING: This sensor is
Power Control System. L
remove. Replace only with
type and rating.

WARNING: This sensor is
Power Control System. L
remove. Replace only with
type and rating.

BONDING
BONDING
E BETWEEN
AL
OUND BA
OK101

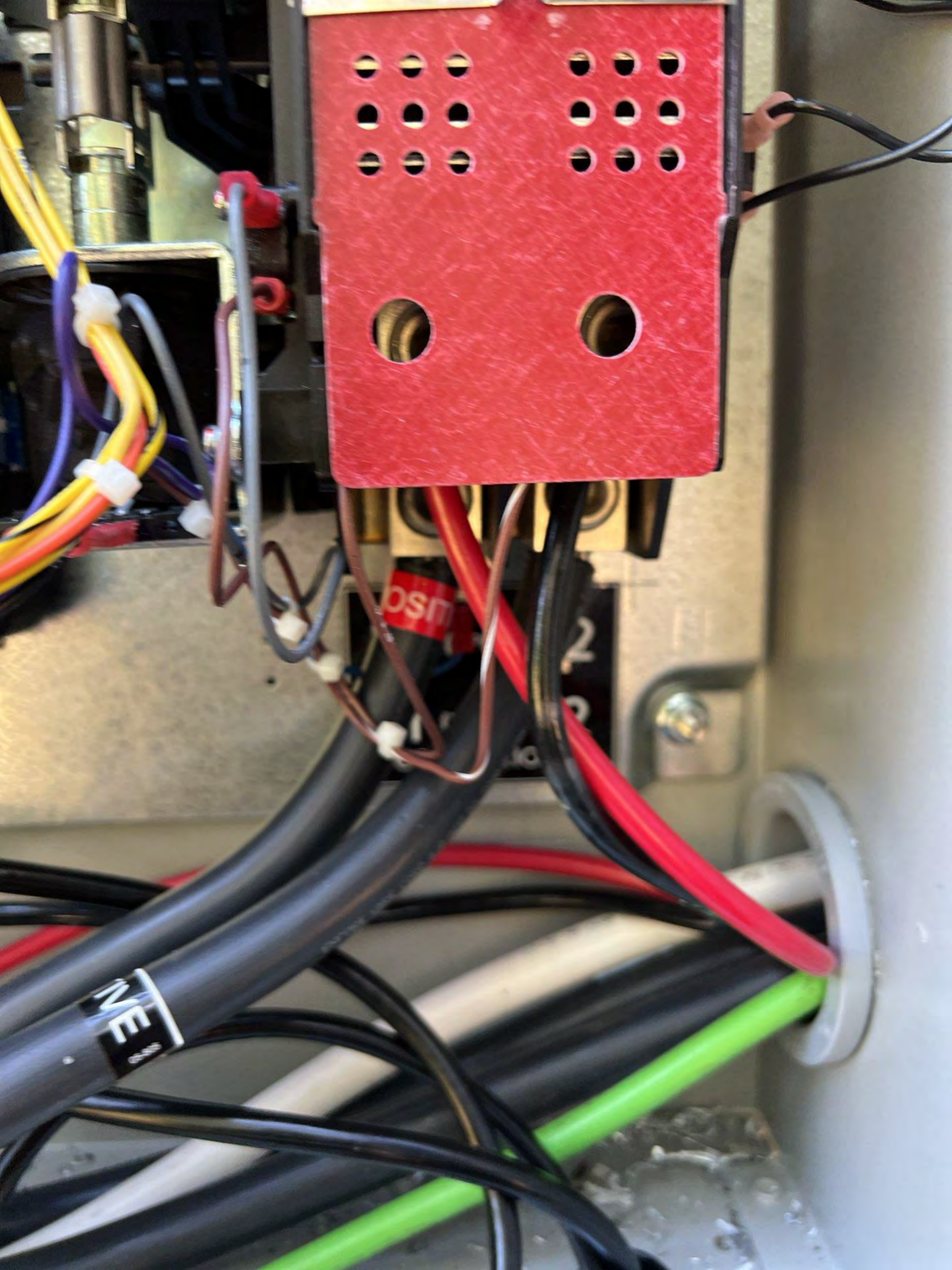
GENERAC[®] TRANSFER SYSTEM DATA

120/240	<input type="checkbox"/>	SYSTEM VOLTAGE
3009884715	<input type="checkbox"/>	SERIAL NUMBER
CXSW200A3	<input type="checkbox"/>	MODEL NUMBER
20211029	<input type="checkbox"/>	PRODUCTION DATE
SWITCH	<input type="checkbox"/>	AND



ATS FOR USE IN OPTIONAL
STANDBY SYSTEMS







HPOT OK

OK

UTILITY SOURCE CONNECTION
N1 N2

WARNING: This sensor is part of a Power Control System. Do not remove. Replace only with same type and rating.

WARNING: DO NOT TOUCH THESE TERMINALS

2-8 AWG AWG AWG

AWG USE-2

AWG USE-2

4/25/02

1000

AWG USE-2

AWG USE-2

AWG USE-2

AWG USE-2

AWG USE-2

AWG USE-2

GENERAC®



WI-FI



GRID STATE



LINE

1

LINE

2

LINE

3

LINE

4

LINE

5

LINE

6

LINE

7

LOAD

LOAD

LOAD

LOAD

LOAD

LOAD

LOAD

1 2 | 3 4 | 5 6 | 7 8 | 9 10 | 11 12

GENERAC®

HVAC 13 14

WI-FI GRID STATE RESET

WARNING: Affects all circuits

ALL ON
NORMAL
ALL OFF

Keep in NORMAL position



LINE 4

LINE 5

LINE 6

LINE 7

LINE 8

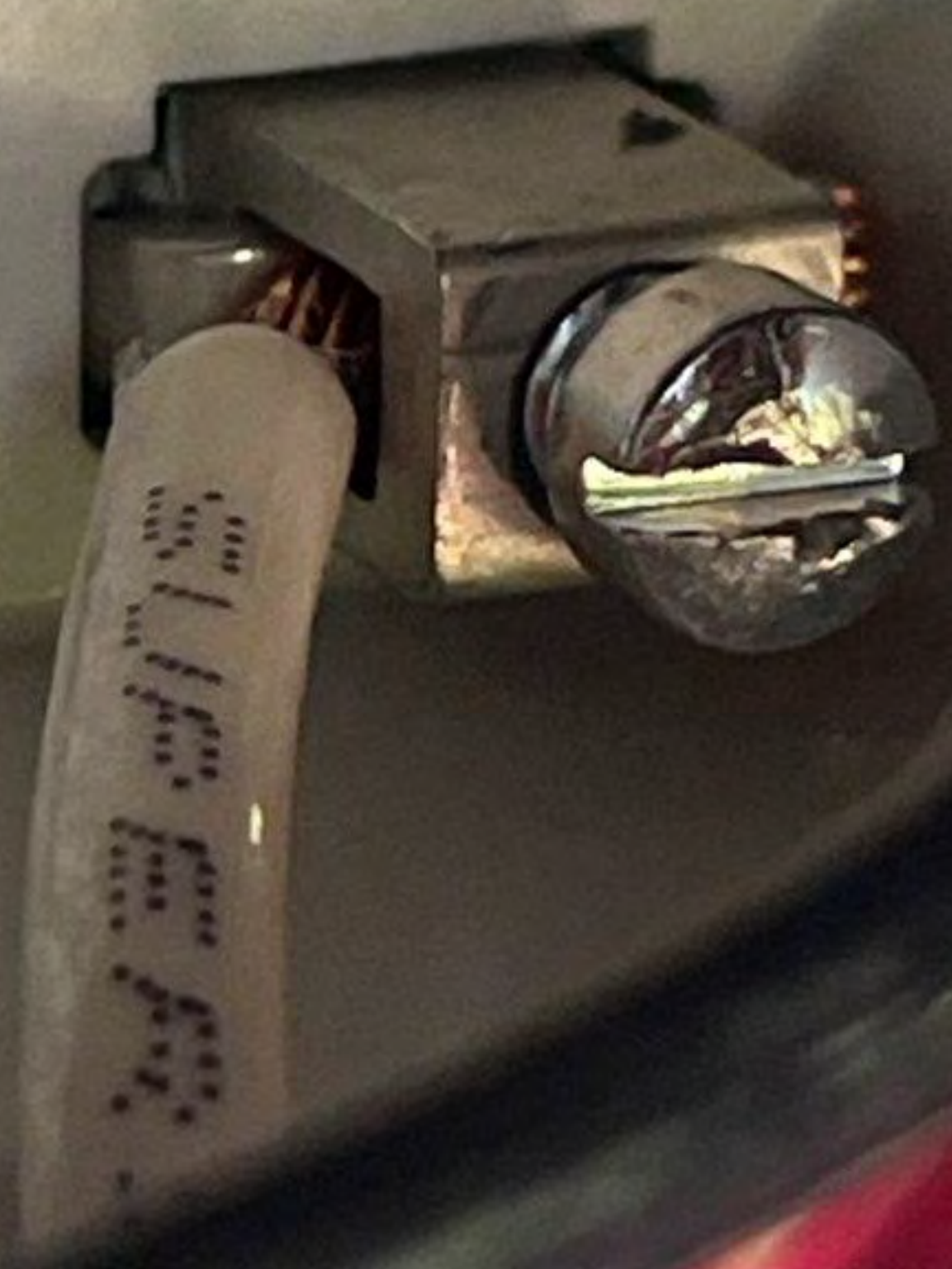
LINE 9



HVAC 1

HVAC 2

NEUTRAL





PEEL AWAY

GENERAC



REGISTER YOUR SYSTEM

SERIAL NUMBER:	XVT07-20296
REGISTRATION CODE:	PPYY-FLYM



Go to register.generac.com to register
or scan the code above.



GENERAC®

Register at: <https://pwrtfleet.generac.com>

Serial Number:

LM1260-0001711


Registration Code:

PSTE-FAW7



SURE MUST BE GROUNDED
communication

RCP: 0001002355E7
S/N: S2502-F4110
MFG: B
Date: Q2-22



PEEL



Rebus

PVRSS Controller
Refer to instruc

GENERAC[®]

IMPORTANT INSTALLATION INSTR

ENCLOSURE MUST BE GROUNDED
for REbus communication



RCP: 000100235495
S/N: S2502-F4112
MFG: B
Date: Q2-22



REbus L
OU

PVRSS Controller
Refer to instruc

GENERAC

IMPORTANT INSTALLATION

ENCLOSURE MUST BE GROUNDED
for REbus communication



RCP: 000100235D1A
S/N: S2502-F4113
MFG: B
Date: Q2-22



PEEL



REbus DC Nanogrid
OUTPUT

PVRSS Controlled Conductor Connection Port
Refer to instructions for conditions of use

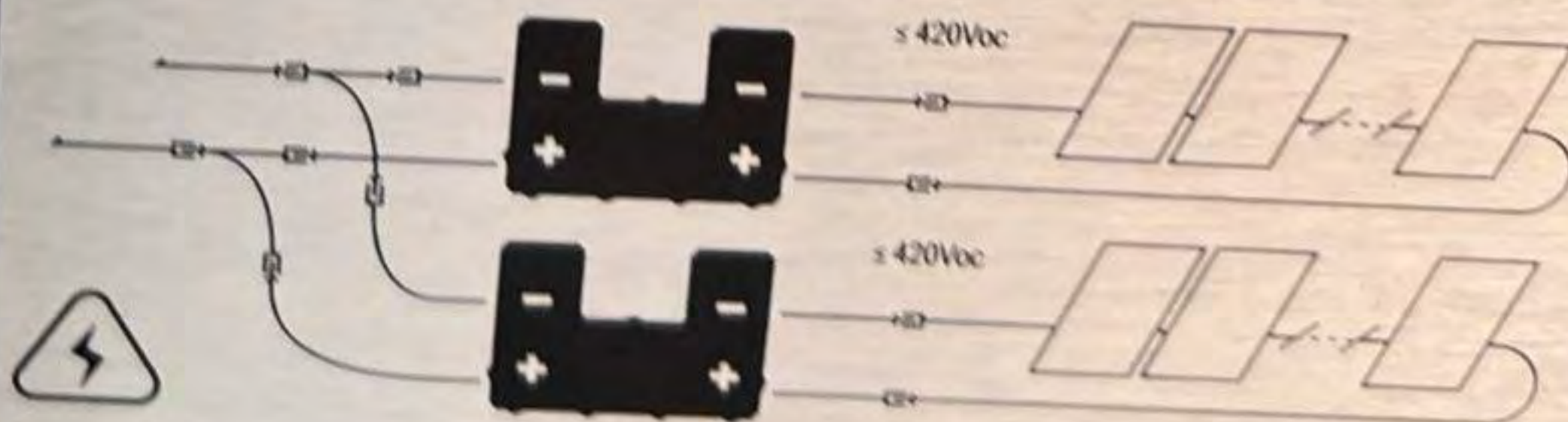


GENERAC

PV Link / S

SnapRS™ compatible sub
PV rapid shutdown system e

IMPORTANT INSTALLATION INSTRUCTIONS:



Input:
Max 420V temp
SINGLE STRING
Dual string input

Output:
Connect PV Links
terminals in parallel

WARNING: ELECTRIC SHOCK HAZARD - THE DC CONDUCTORS OF THIS PHOTOVOLTAIC SYSTEM ARE UNGROUNDED AND MAY BE ENERGIZED. ELECTRIC SHOCK HAZARD.
CAUTION: RISK OF ELECTRIC SHOCK - WHEN THE PHOTOVOLTAIC ARRAY IS EXPOSED TO LIGHT, IT SUPPLIES A DC VOLTAGE TO EQUIPMENT. COVER PV MODULE IN DARKNESS TO STOP THE PHOTOVOLTAIC ARRAY FROM GENERATING DC VOLTAGE. ANY FAULT ON REBUS™ DC NANOGRID WILL AUTOMATICALLY DISCONNECT ARRAY FROM GRID.
AVERTISSEMENT: RISQUE DE CHOC ÉLECTRIQUE - LES CONDUCTEURS DC DE CE SYSTÈME PHOTOVOLTAÏQUE NE SONT PAS RELIÉS À LA TERRE ET POURRAIENT ÊTRE ENERGIZÉS.
ATTENTION: RISQUE DE CHOC ÉLECTRIQUE - LORSQUE LE GÉNÉRATEUR PHOTOVOLTAÏQUE EST EXPOSÉ À LA LUMIÈRE, IL FOURNIT UNE TENSION CONTINUE À L'APPAREIL OPTIMISEUR. EN CAS DE DÉFAUT, IL N'EXISTE AUCUN COURANT ENTRE CE CONVERTISSEUR ET LE GÉNÉRATEUR CONTINU. INSTALLEZ EN CONCORDANCE AVEC TOUS LES RÉGLES DE SÉCURITÉ. RAPIDE: L'APPAREIL SE DECONNECTE AUTOMATIQUEMENT DU GÉNÉRATEUR PHOTOVOLTAÏQUE - EN CAS DE PERTE DE RÉSEAU, D'ARRÊT MANUEL DE COMMANDE ÉLECTRIQUE, OU

MISSION SOLAR ENERGY



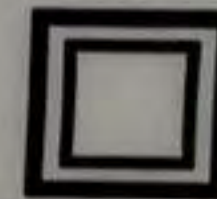
Serial No. **M220726-A0668**



Model Number	MSE345SX5T
Rated Maximum Power.	[W] 345 (-0/+3%)
Open – Circuit Voltage	[V] 41.0
Voltage at Pmax	[V] 33.4
Short – Circuit Current	[A] 10.92
Current at Pmax	[A] 10.34
Max. System Voltage	[V] 1000
Max. Series overcurrent protective device (where required) fuse rating	[A] 20
Standard test condition	AM=1.5 E=1000W/m² Tc=25°C



For field connections, use Cu only, 12AWF (US, CANADA), 4mm² (EU, Asia) wires insulated for a minimum of 90°C, rated for wet conditions and resistant to ultra violet radiation (where exposed). See installation manual for PV connector details and compatibility. Avertissement Risque de choc électrique. Ce module produit des tensions élevées dans la lumière du soleil. Risque électrique peut choquer, brûler ou de provoquer la mort. Ne pas toucher la borne.



Fire Rating : Type 1
 Class of Equipment: Class II
 Design Load: Minimum 3600 Pa front and minimum 1600 Pa back load

Warning
 PV modules generate voltage even with very weak light. Do not open the junction box. Les modules PV produisent tension même en basse lumière. Ne pas ouvrir la boîte de jonction.



Address:
 8303 S. New Braunfels Ave.
 San Antonio, TX 78235
ASSEMBLED IN THE USA

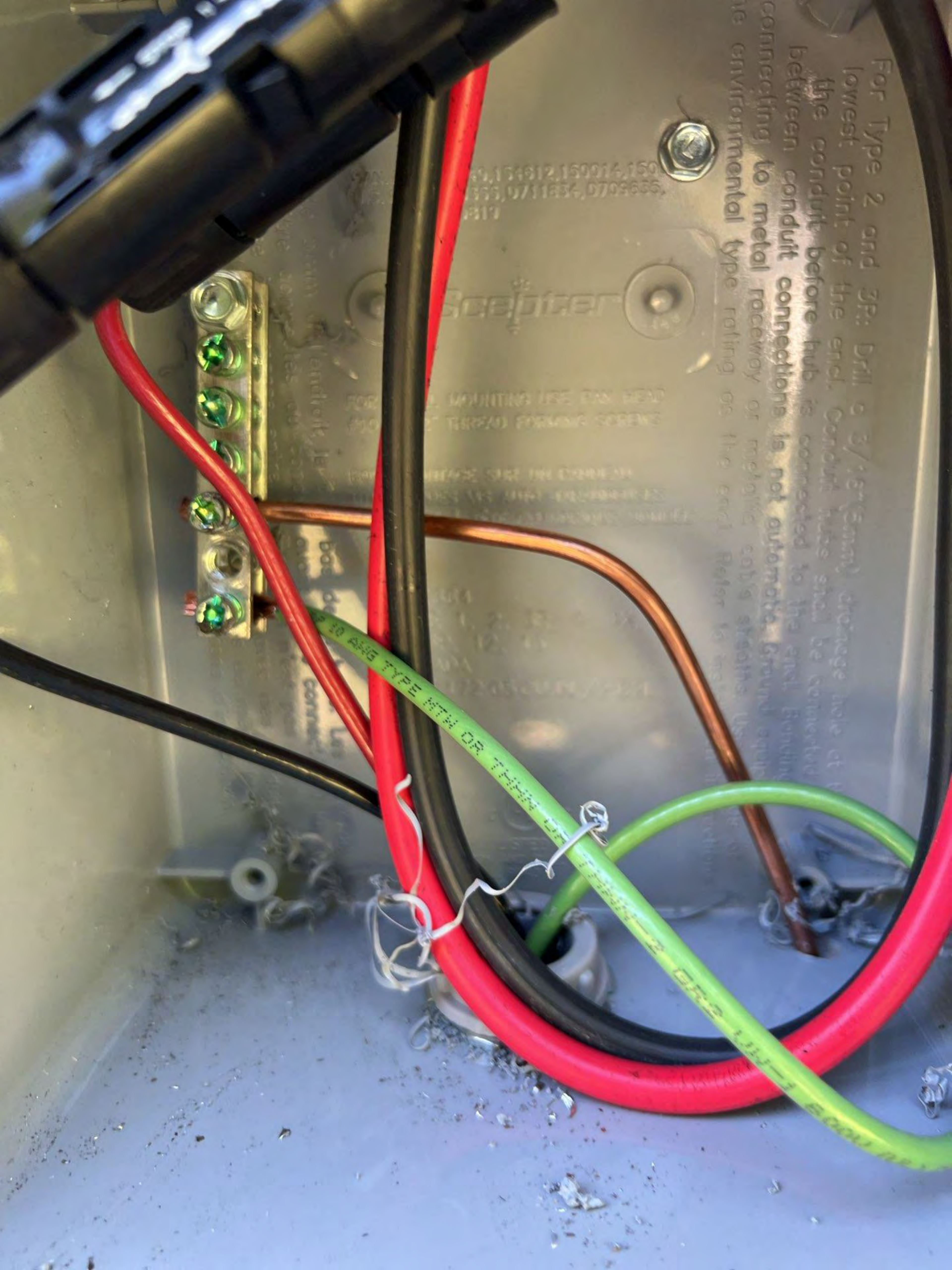
For Type 2 and 3P: Drill a 3/16" (3mm) drainage hole at the lowest point of the end. Conduit tube shall be connected between conduit before hub is connected to the shell. Bonding connecting to metal raceway or metal equipment shall be made in the environmental type rating on the end. Refer to...

150014, 150015, 150016, 150017, 150018, 150019, 150020, 150021, 150022, 150023, 150024, 150025, 150026, 150027, 150028, 150029, 150030, 150031, 150032, 150033, 150034, 150035, 150036, 150037, 150038, 150039, 150040, 150041, 150042, 150043, 150044, 150045, 150046, 150047, 150048, 150049, 150050, 150051, 150052, 150053, 150054, 150055, 150056, 150057, 150058, 150059, 150060, 150061, 150062, 150063, 150064, 150065, 150066, 150067, 150068, 150069, 150070, 150071, 150072, 150073, 150074, 150075, 150076, 150077, 150078, 150079, 150080, 150081, 150082, 150083, 150084, 150085, 150086, 150087, 150088, 150089, 150090, 150091, 150092, 150093, 150094, 150095, 150096, 150097, 150098, 150099, 150100

Scorpion

INSTALLATION USE ONLY. DO NOT ATTEMPT TO REPAIR OR MODIFY THIS EQUIPMENT.

TYPE III MTH OR THM





Self Supply



0.51kw 3.54kw



370Vdc



244Vac



0.00kw 3.08kw




REbus


Inverter



Internet



Shutdown
(hold)





URC-RCP
000100078DA5

E3058
TS-
302

CTS

ATS

TRANS

STOP

RGM PWR
Gen Inhibit

250VAC, 1A
Fast Blow

E364879 24 AWG 2500V 24AWG VW-1 105°C 600V CSA AWM I A 105°C 600V FT1

















Scabizer
Fully Case Fasteners
Formez complètement
les attaches

88554 8791 277004

UL

88554 8791 277004

UL

Scabizer
Fully Case Fasteners
Formez complètement
les attaches

88554 8791 277004

UL

88554 8791 277004

UL

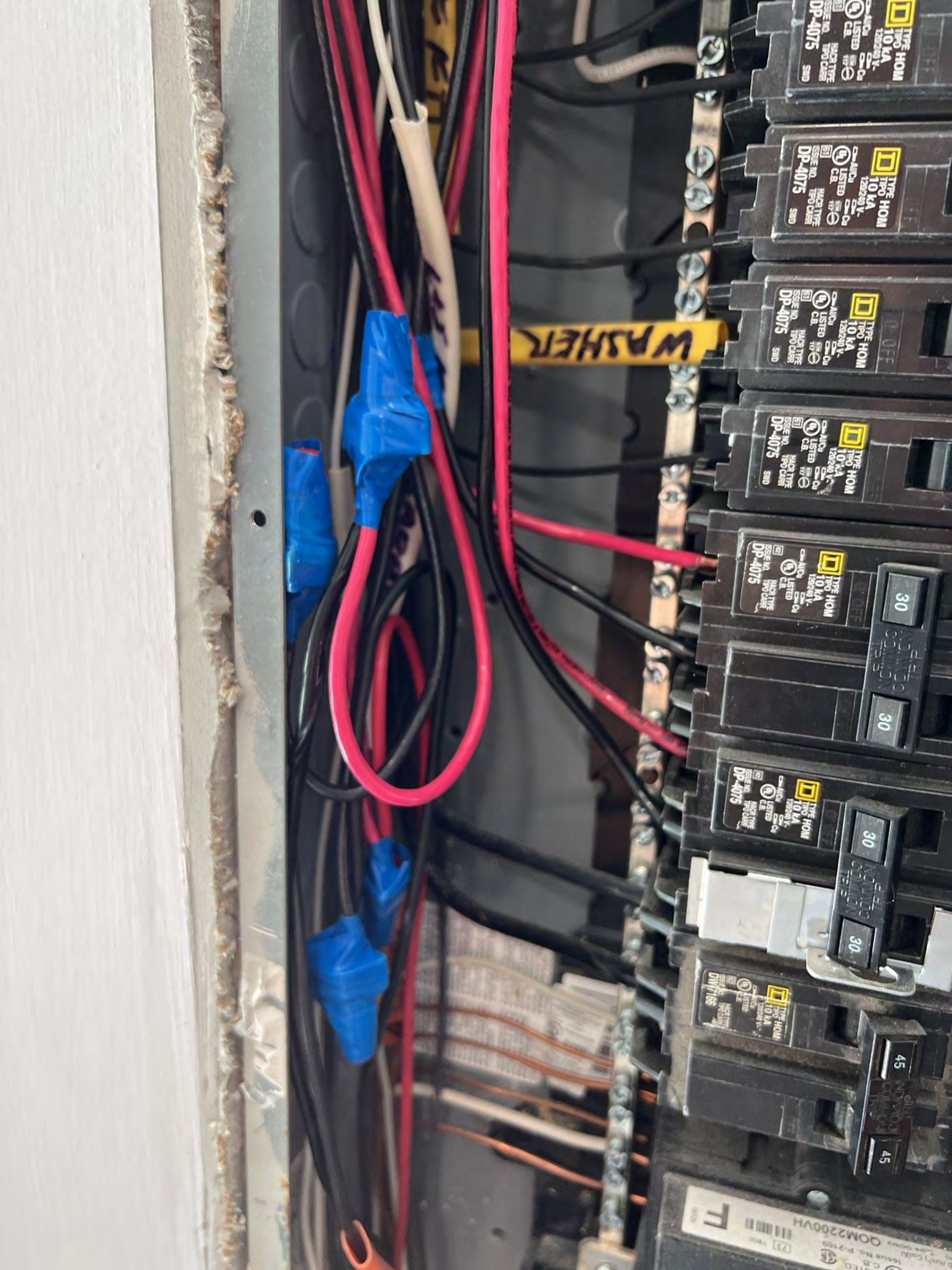












WASHER

TYPE HOM
10 KA
120/240V
LISTED
C.B.
DP-4075
ISSUE NO. 51
MFG TYPE TPO CBR

TYPE HOM
10 KA
120/240V
LISTED
C.B.
DP-4075
ISSUE NO. 51
MFG TYPE TPO CBR

TYPE HOM
10 KA
120/240V
LISTED
C.B.
DP-4075
ISSUE NO. 51
MFG TYPE TPO CBR

TYPE HOM
10 KA
120/240V
LISTED
C.B.
DP-4075
ISSUE NO. 51
MFG TYPE TPO CBR

TYPE HOM
10 KA
120/240V
LISTED
C.B.
DP-4075
ISSUE NO. 51
MFG TYPE TPO CBR

TYPE HOM
10 KA
120/240V
LISTED
C.B.
DP-4075
ISSUE NO. 51
MFG TYPE TPO CBR

TYPE HOM
10 KA
120/240V
LISTED
C.B.
DP-4075
ISSUE NO. 51
MFG TYPE TPO CBR

GOM2200VH
TYPE HOM
10 KA
120/240V
LISTED
C.B.
DP-4075
ISSUE NO. 51
MFG TYPE TPO CBR

30

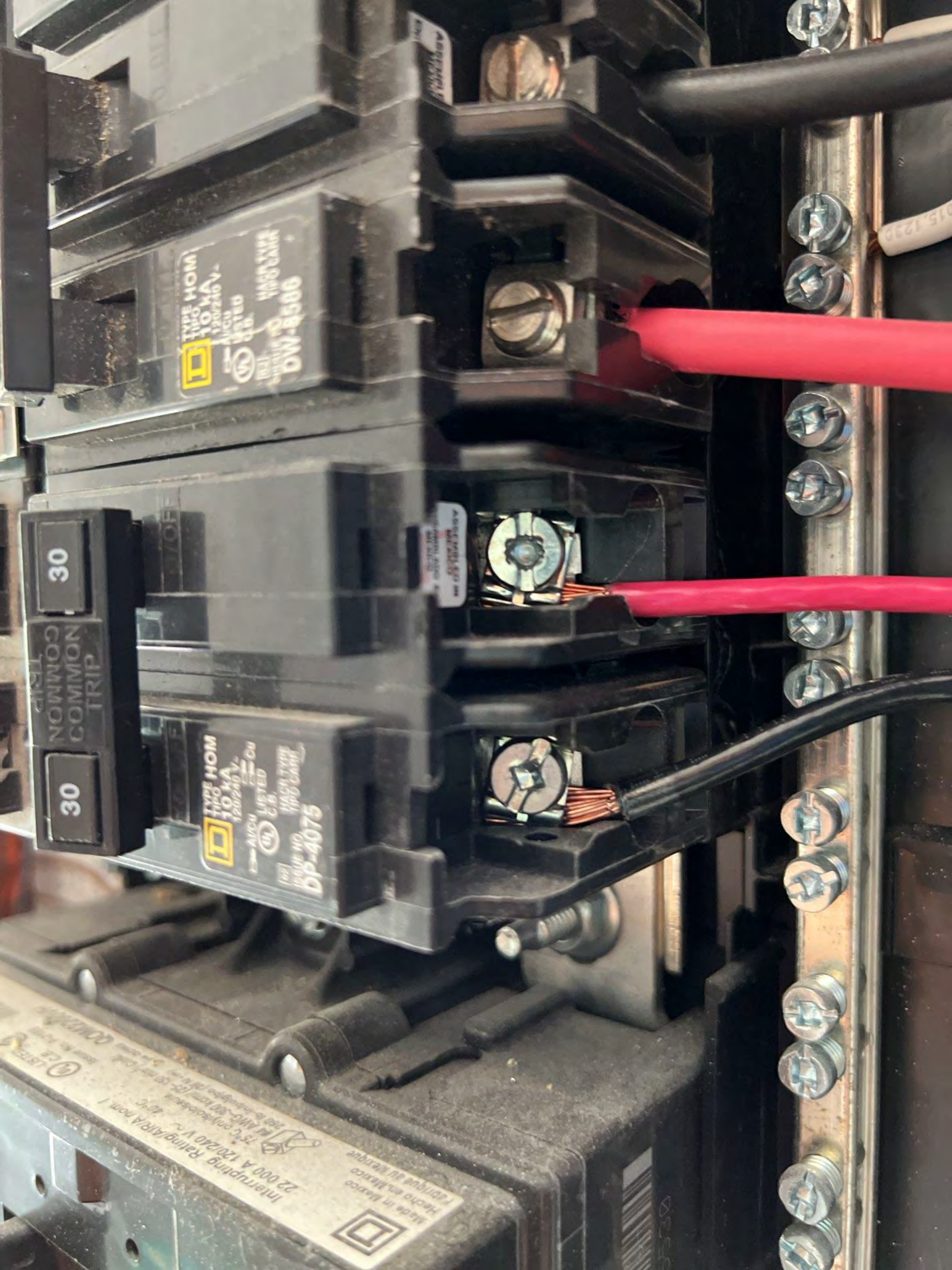
30

30

30

45

45



TYPE HOMI
10 kA
120/240 V-
A/CU LISTED
C.B.
HACR TYPE
ISSUE NO.
DW-8586

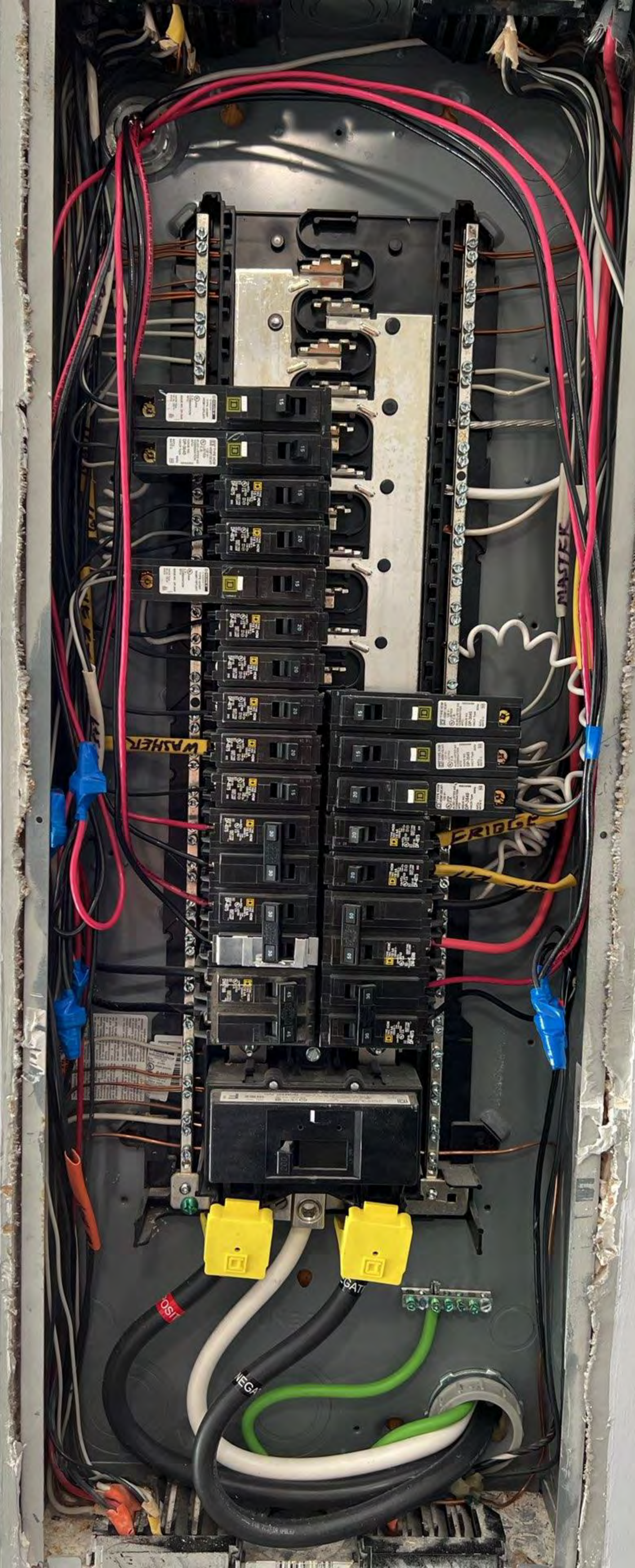
30

COMMON
TRIP

30

TYPE HOMI
10 kA
120/240 V-
A/CU LISTED
C.B.
HACR TYPE
ISSUE NO.
DP-4075

Interrupting Rating/Alf/A non I
22 000 A 120/240 V ~
75°C only/Alf=200 kcmil (60 mm²)
Hacq en Mexico
Hecho en Mexico
Fabricado en Mexico





20	Bath R. GFCI	
18	KITCHEN GFCI	M - Bedroom L.T.
16	WATER MATING	FAMILY ROOM
14	DISHWA SHER	DINNING R.
12		FRIG
10	Dryer	
8	Water	
6	Heater	
4	A/C	
2	Heater	

Use only Square D HOM Circuit Breakers. / Utilice s...

cuco HOM de Square D

See Wiring Diagram for address
Consulte el diagrama de asar
informacion sobre accesorios a

4020513002K - Cover Series
de tornillos de
HOMFP - Branch break
relleno del interruptor au
QOMZFP - Main breaker
relleno del interruptor aut
PKSFL - Door Lock Kit / Ac
cstradura de puert

Accessories / Accesor
Type 1 Enclosure

HOMELINE™
Frente del cen
HOMC4
Series / Serie:

muerte o lesiones serias.
adecuado para confirm
os, las puertas y los
inicio de

serious injury.

El incumplir









WARNING: PHOTOVOLTAIC
POWER SOURCE

NOT ON VOLTAGE
SOURCE









WARNING: PHOTOVOLTAIC POWER SOURCE

Georgla

FLEX VENT

Therm Flex
Flexible Ventilation

10" PP

10" PP



7 00
100

7 00
100

UL US
LISTED
ELECTRICAL
EQUIPMENT

MANUFACTURED BY
INSULATION





WARNING: PHOTOVOLTAIC
WIRE SOURCE

OSB sheathing with faint markings and text, including a circular logo and some illegible text.










⊕ STOP ⊖ **WARNING:**
WER SEARCH

FOR
REMOTE
SHUTDOWN
SWITCH

TURN BATTERY
DISCONNECT "OFF"
AND DE-ENERGIZE
REBUS BEFORE
TOUCHING
TERMINALS



60-864
X



STATUS

SOC

COM IN

COM OUT

+

-

STATUS

SOC

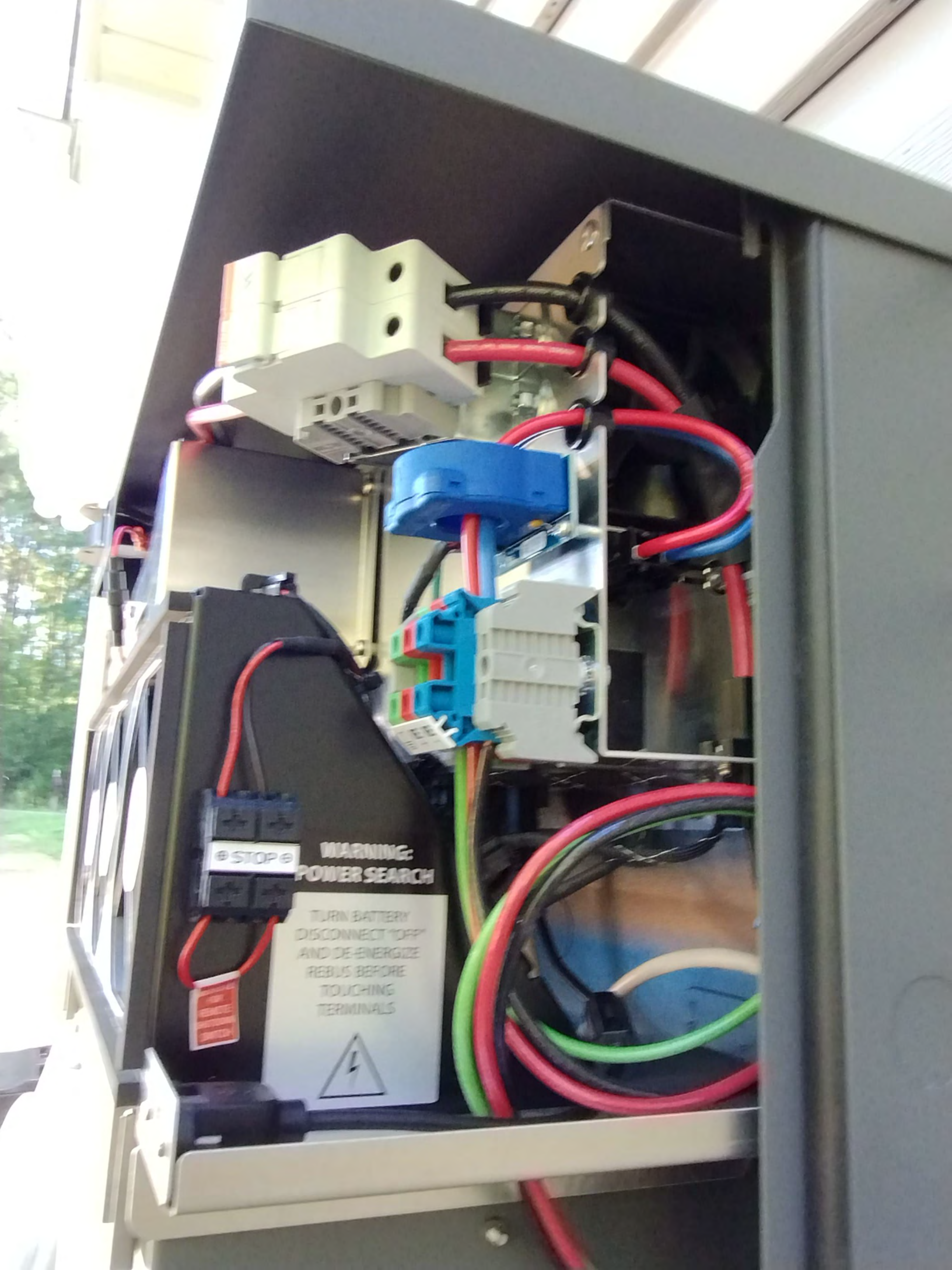
COM IN

COM OUT

+

-





STOP

**WARNING:
POWER SEARCH**

TURN BATTERY
DISCONNECT "OFF"
AND DE-ENERGIZE
REBUS BEFORE
TOUCHING
TERMINALS





STATUS
SOC

COM IN

COM OUT

ENTER CABLE TO TERMINAL



STATUS
SOC

COM IN

COM OUT



Serial number
Date of manufacture
Manufactured in
Made in

TYPE 3R ENCL
SUITABLE FOR USE
DWELLING UNITS

Inter
50149

Conforms to L
Certified to CE

WARNING: RISK OF ELECTRIC SHOCK
DO NOT OPEN COVER. NO USER SERVICEABLE PARTS.
REFER TO SERVICE PERSONNEL.

WARNING: HIGH VOLTAGE
DO NOT TOUCH THE COVER OR THE TERMINALS.
TURN OFF THE SWITCH TO OFF AND
DISCONNECT THE CABLES FROM THE
CABINET.

WARNING: FUSES INSIDE

MISE EN GARDE
DANGER ÉLECTRIQUE - NE PAS OUVRIRE LE
BOÎTIER. PAS DE PIÈCES RÉPARABLES EN
AUTRE QUE LE SERVICE À L'INTERIEUR. CONSULTER
LES INSTRUCTIONS À L'INTÉRIEUR DU BOÎTIER.

MISE EN GARDE
DANGER ÉLECTRIQUE - NE PAS OUVRIRE LE
BOÎTIER. PAS DE PIÈCES RÉPARABLES EN
AUTRE QUE LE SERVICE À L'INTERIEUR. CONSULTER
LES INSTRUCTIONS À L'INTÉRIEUR DU BOÎTIER.

MISE EN GARDE
DANGER ÉLECTRIQUE - NE PAS OUVRIRE LE
BOÎTIER. PAS DE PIÈCES RÉPARABLES EN
AUTRE QUE LE SERVICE À L'INTERIEUR. CONSULTER
LES INSTRUCTIONS À L'INTÉRIEUR DU BOÎTIER.

