





www.SOLARIA.com

PowerX-400R

Peak Power	(Pmax)	400 W
Power Range		-0 / +5 W
Voltage at Pmax	(Vmp)	31.17 V
Current at Pmax	(Imp)	12.84 A
Open Circuit Voltage	(Voc)	37.20 V
Short Circuit Current	(Isc)	13.68 A
Maximum Series Fuse		30 A

All ratings at standard test conditions: 1000 W/m², AM 1.5 spectrum, 25°C.
Field connections: use min. 12 AWG copper wires insulated for 90°C min.



Power Measurement Tolerances ±3%
Open Circuit Voltage Tolerance ±3%
Short Circuit Current Tolerance ±3%



WARNING

Caution
Risk of electric shock.



AVERTISSEMENT

Danger
Risques d'électrocution.

IEC Fire Rating Class C – UL Type 2
Application Class II

See Installation Manual for
Installation Requirements to
Achieve a Specified System Fire
Class Rating with this Product



Maximum Permissible System Voltage 1000V DC

Made in Thailand

PXT-LBL-0008-01

255 WYNDHAM PLACE DR.
FUQUAY-VARINA NC 27526







PEGASUS
SOLAR

END PANEL →

PRS
21-2

C US A





Geocel
2300 CONSTRUCTION
HYDROLYMER SEALANT

PELIGRO! NOCIVO O FATAL SI SE
INGIERE, DEMUESTRA EL VAPORES
NOCIVOS. EVITA LOS OJOS, PIEL Y
RESPIRATORIAS. Antes de usar,
leer cuidadosamente las PRECAUCIONES
en la parte posterior de la etiqueta.
Para información importante al cliente
llamamos al 1-800-368-3688.

12 (304 mL)

0 00000 000000
CLEAR / CLARO

DANGER!
IF SWALLOWED,
IF ON SKIN,
IF IN EYES, OR
IF IN CONTACT WITH
CAUTION: avoid
breath















US PATENT 10,998,847



A2







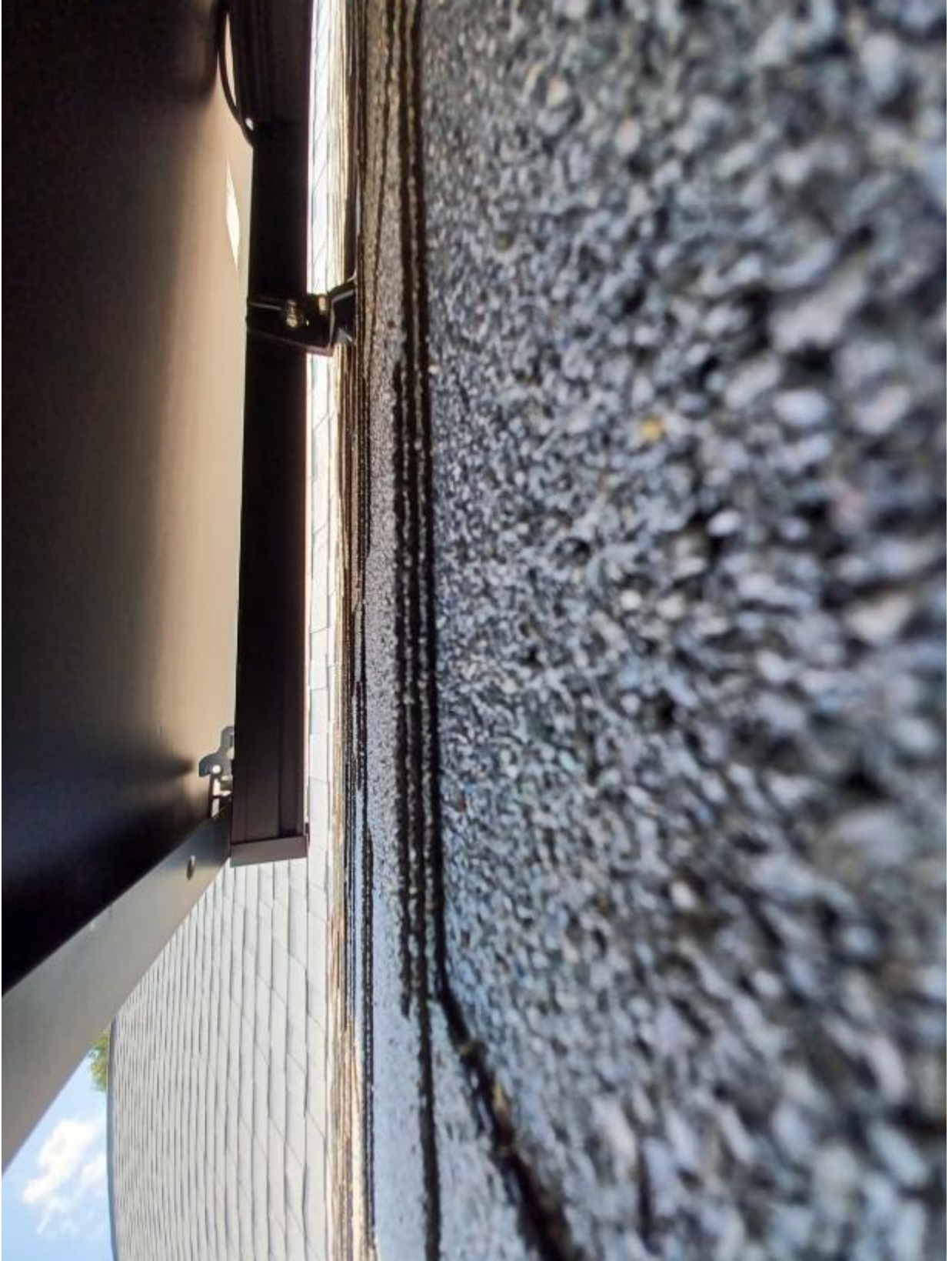


























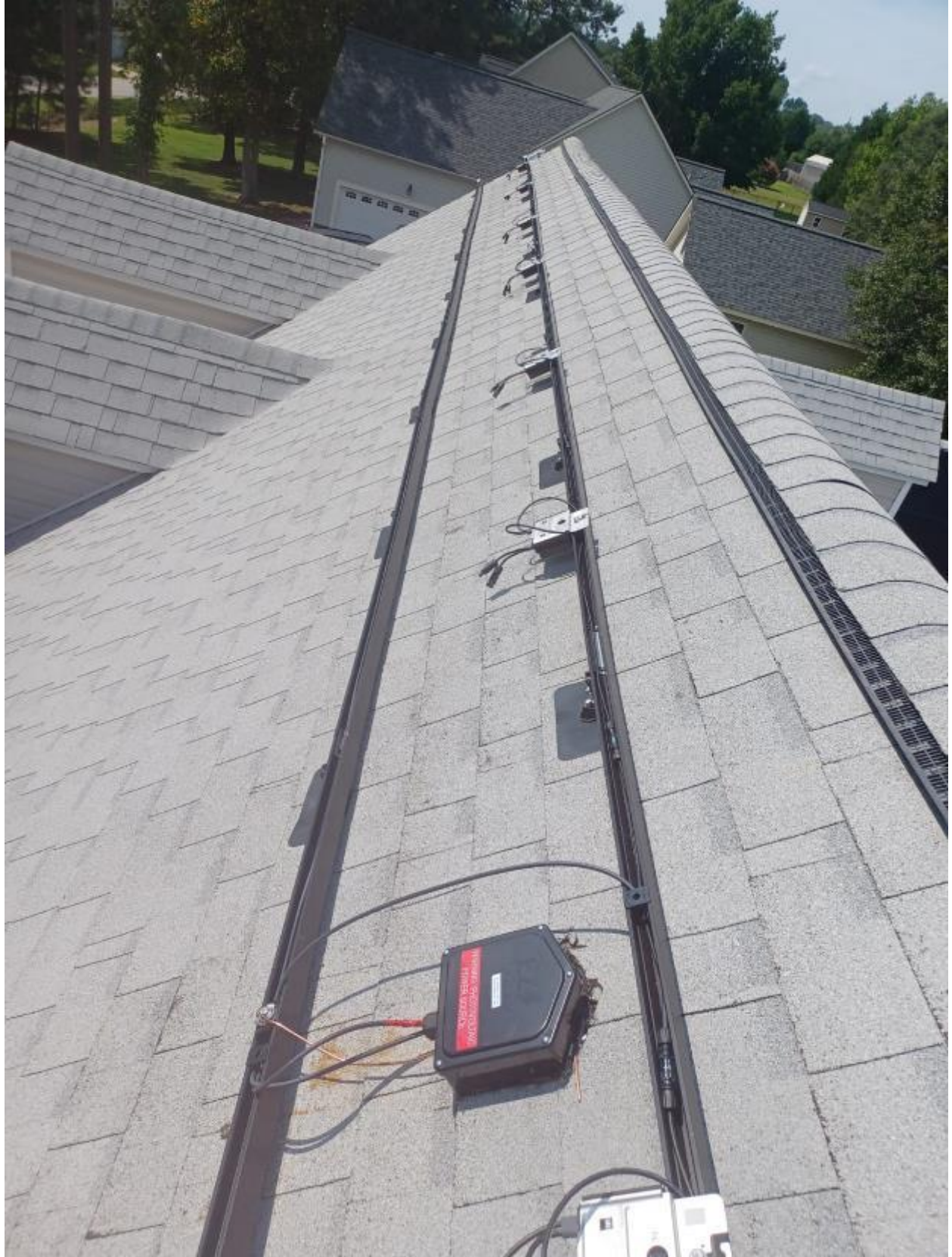














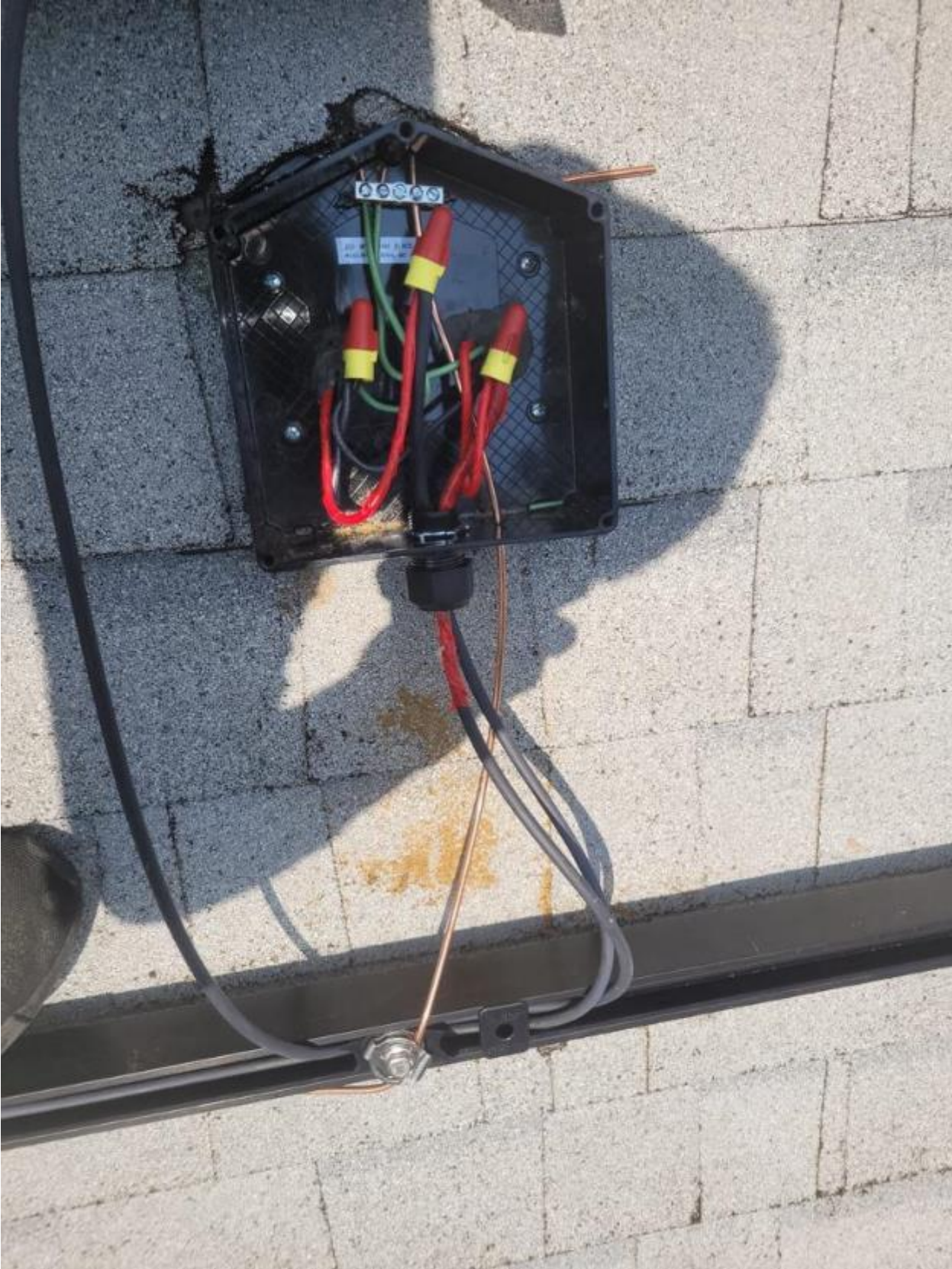


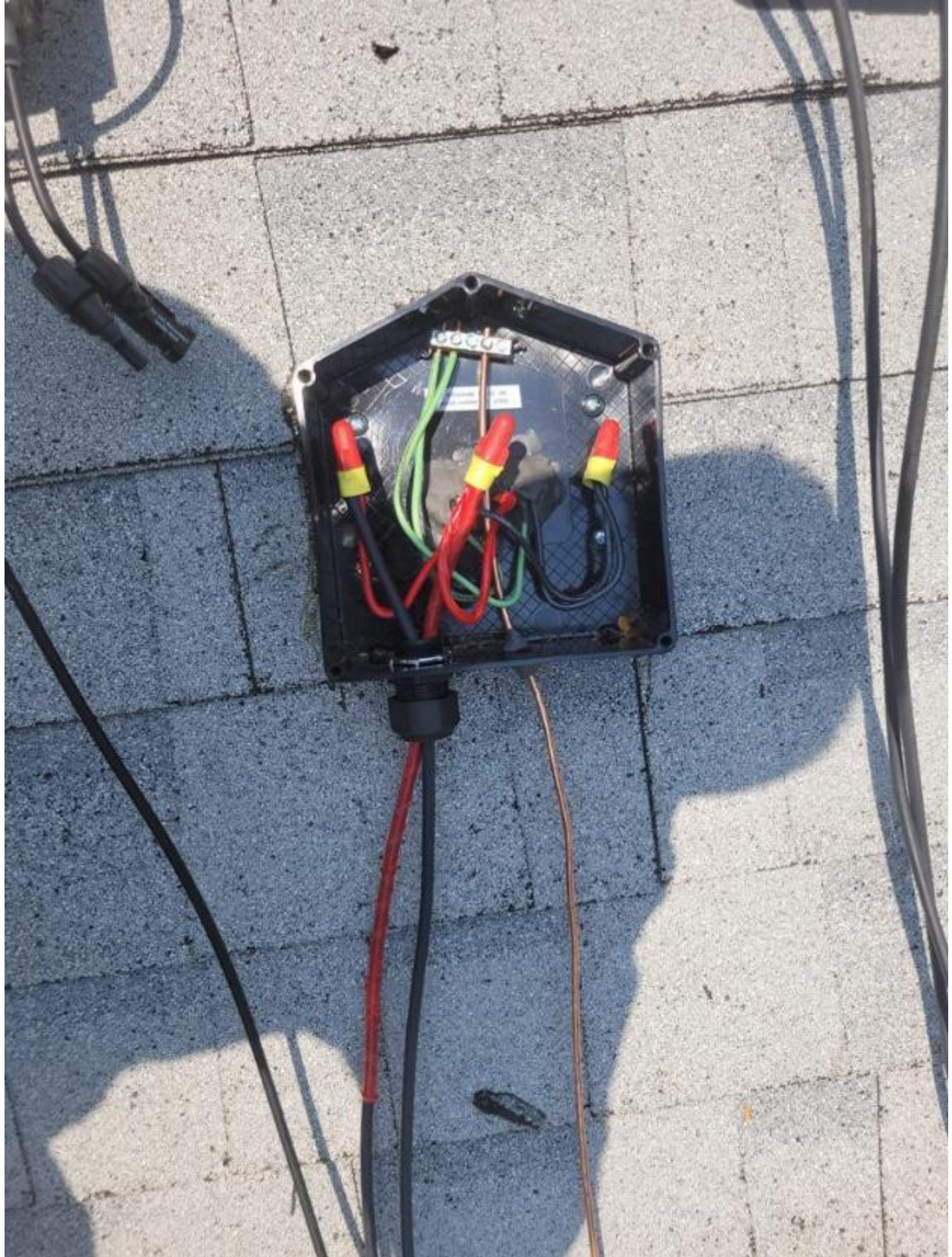


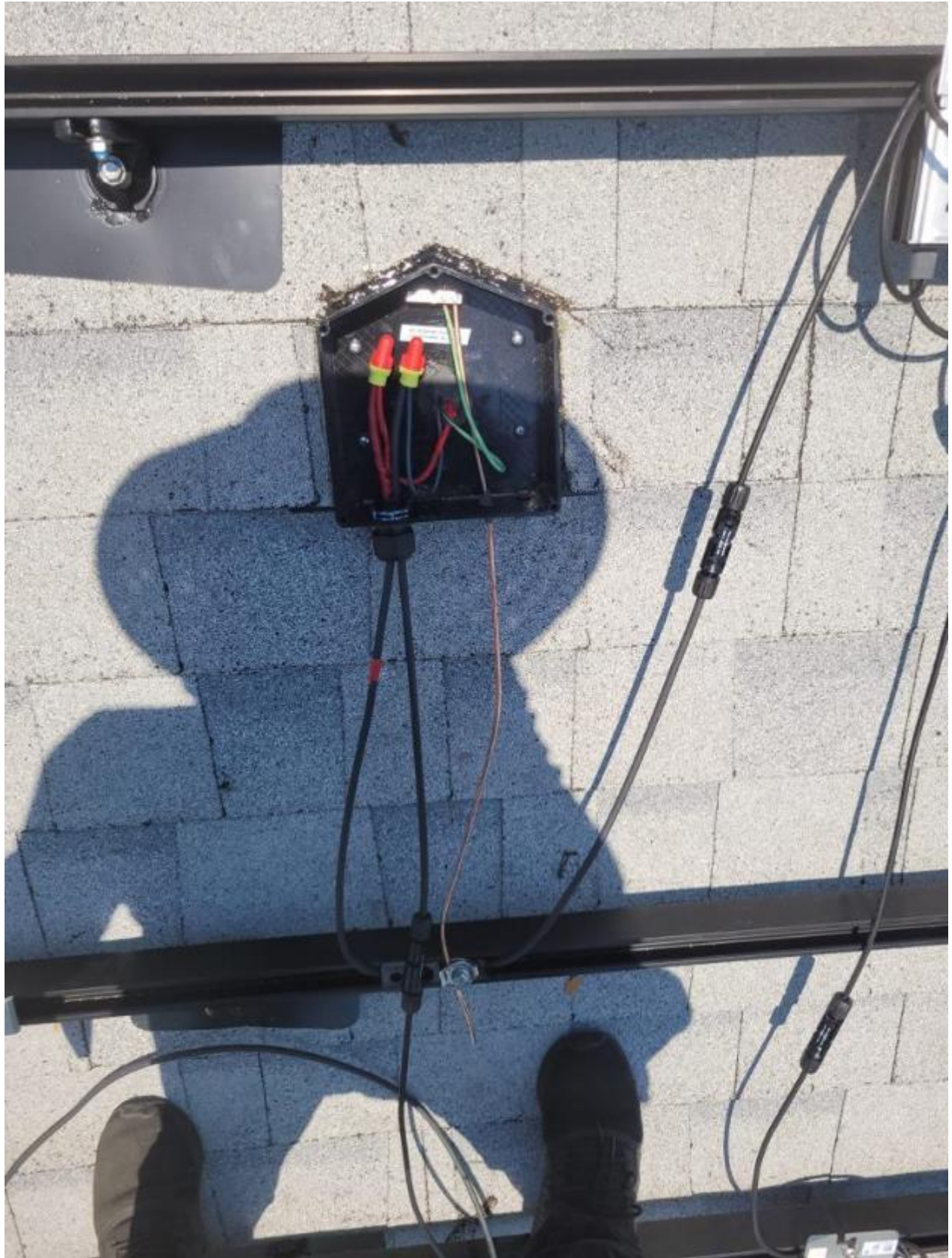


WARNING: PHOTOVOLTAIC
POWER SOURCE

MS-PTV004-1-12-10
P/N: 1000-001-001







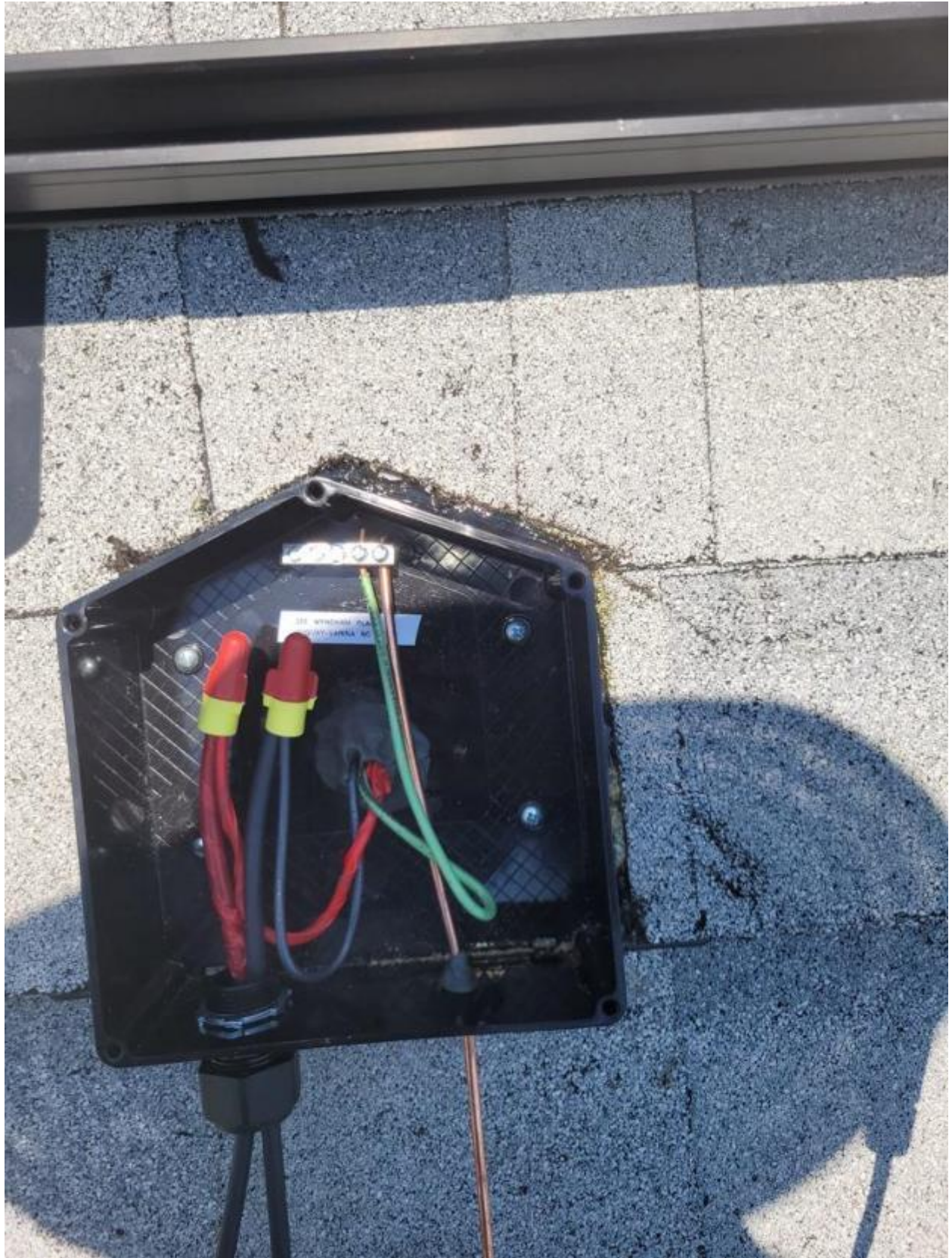


WARNING: PHOTOVOLTAIC
POWER SOURCE

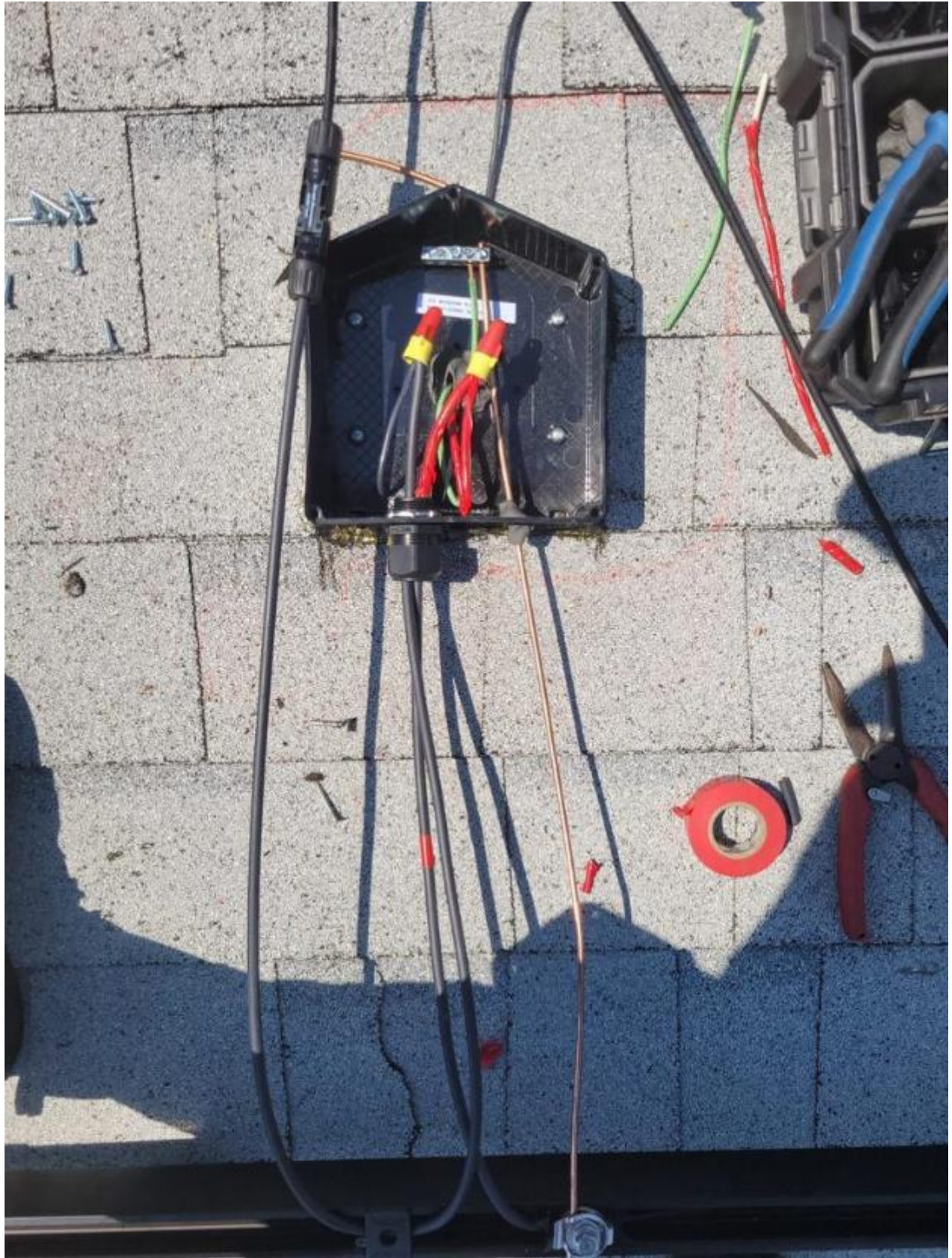
200 WYNDHAM PLACE SE
FLORENCE, SOUTH CAROLINA 29506









































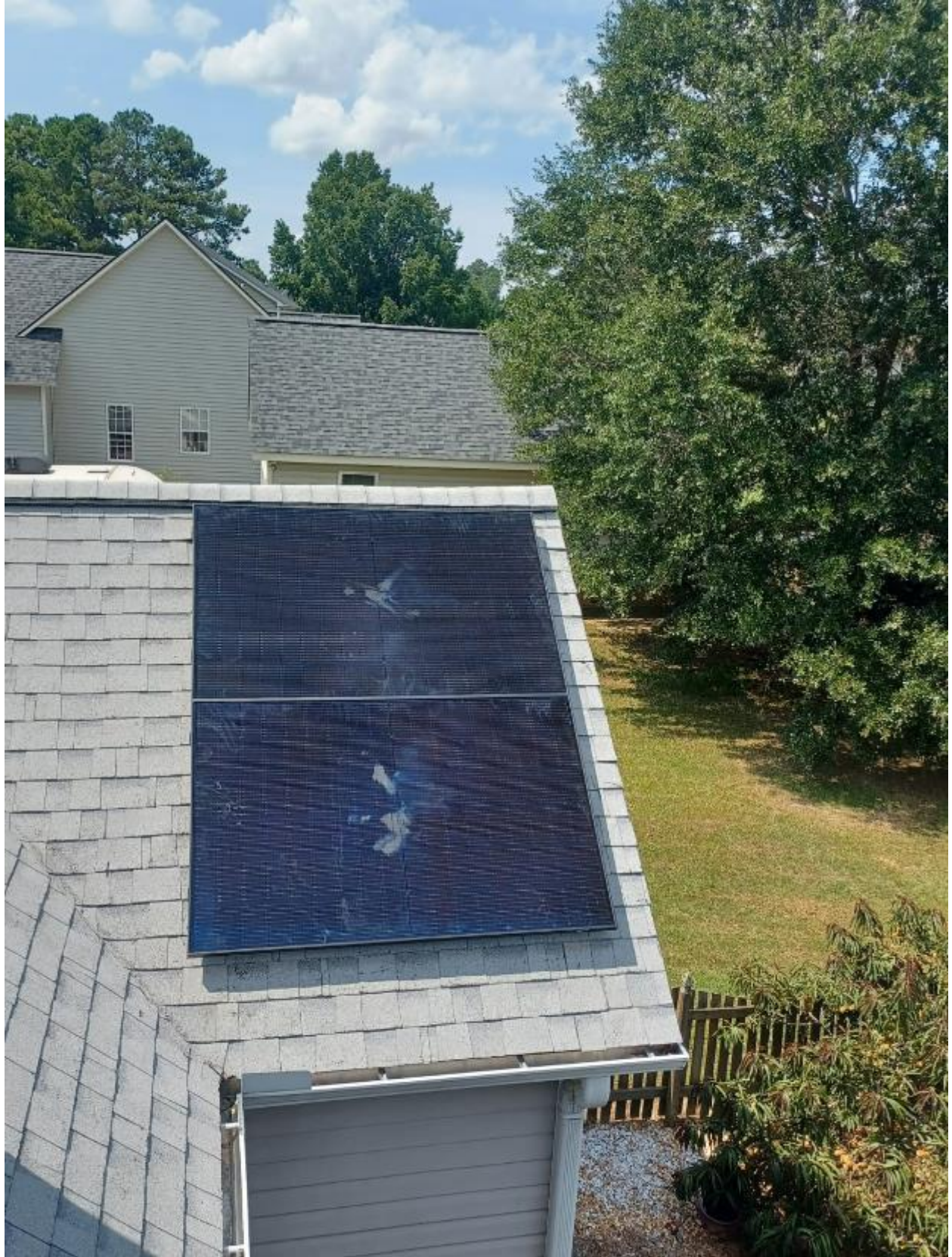










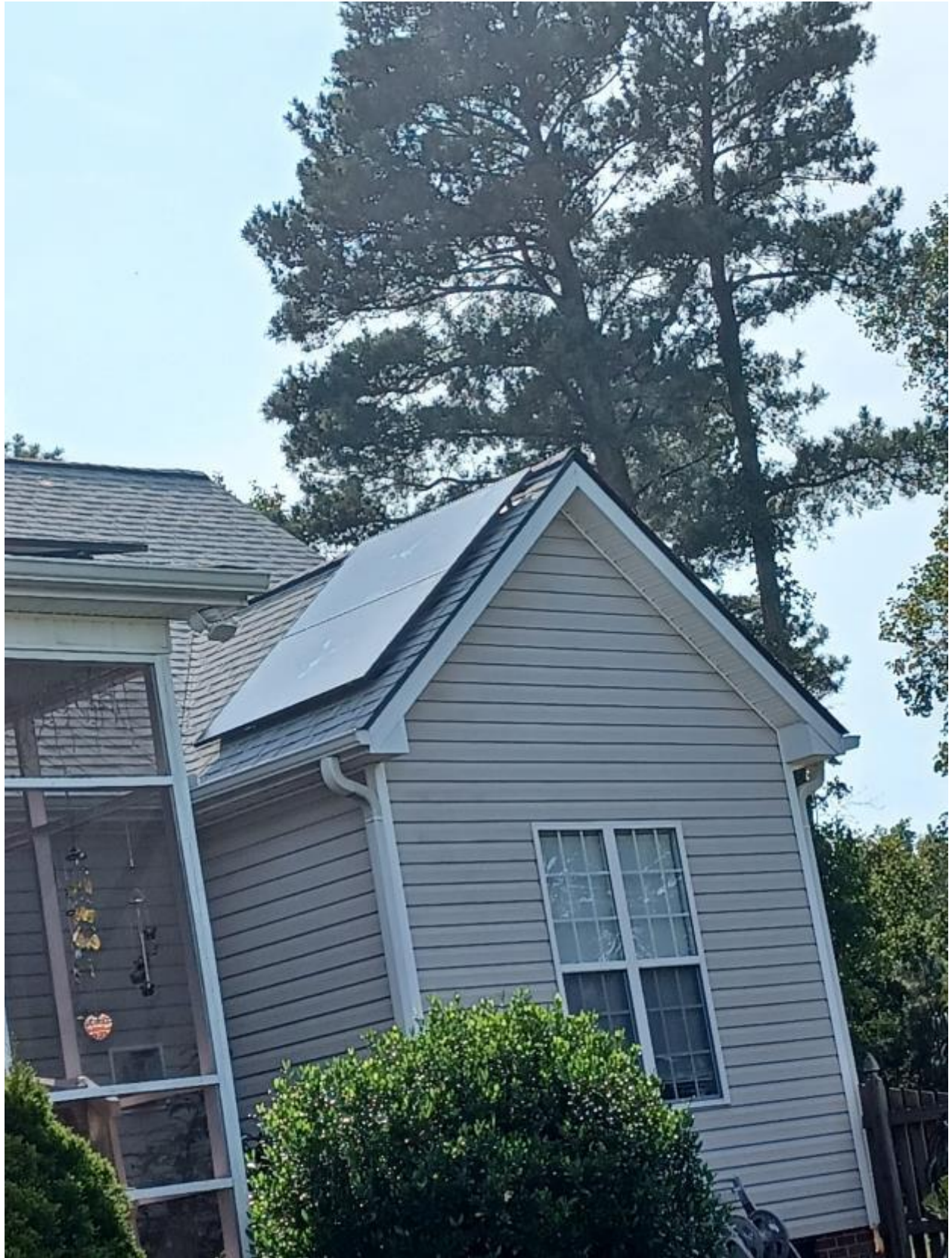








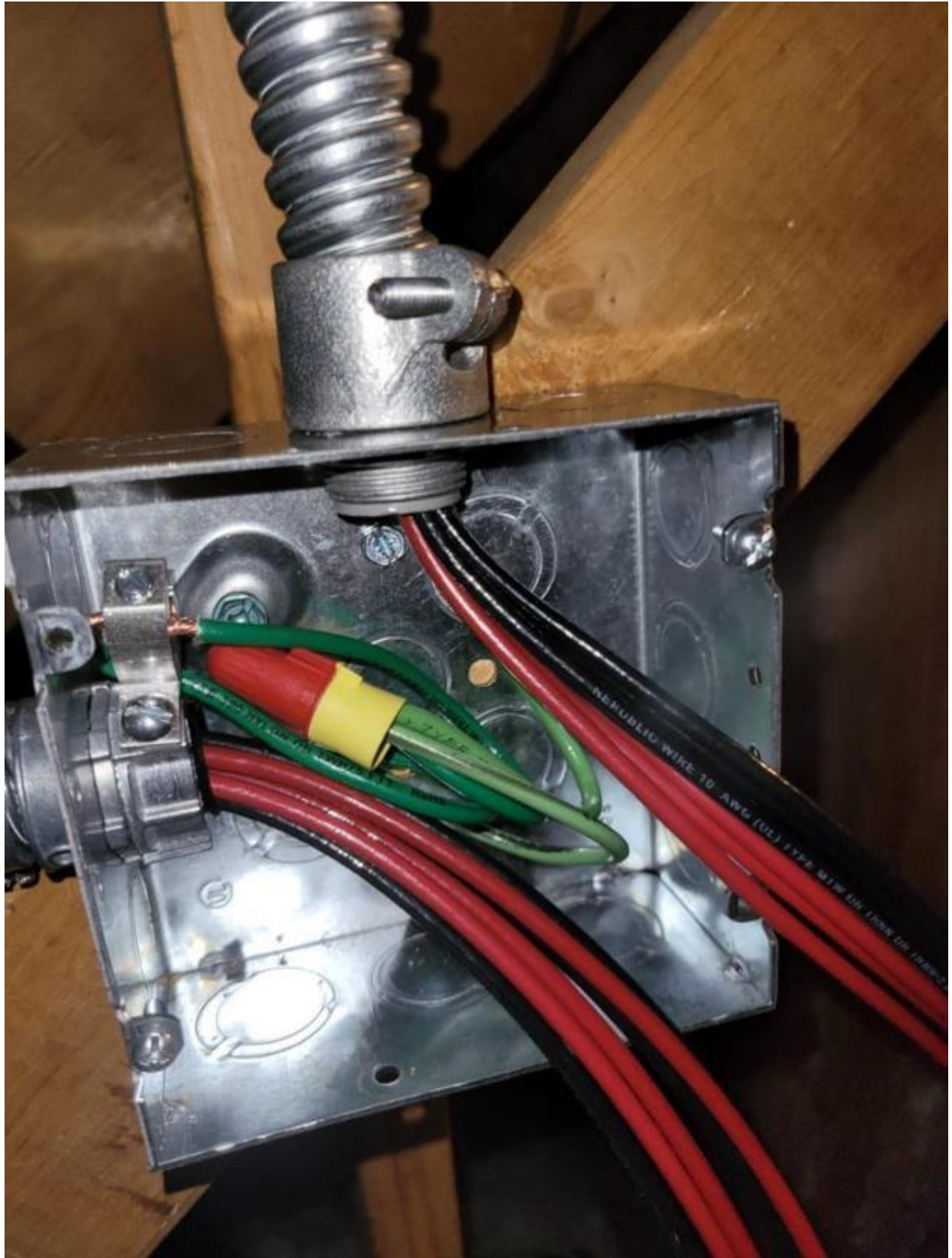












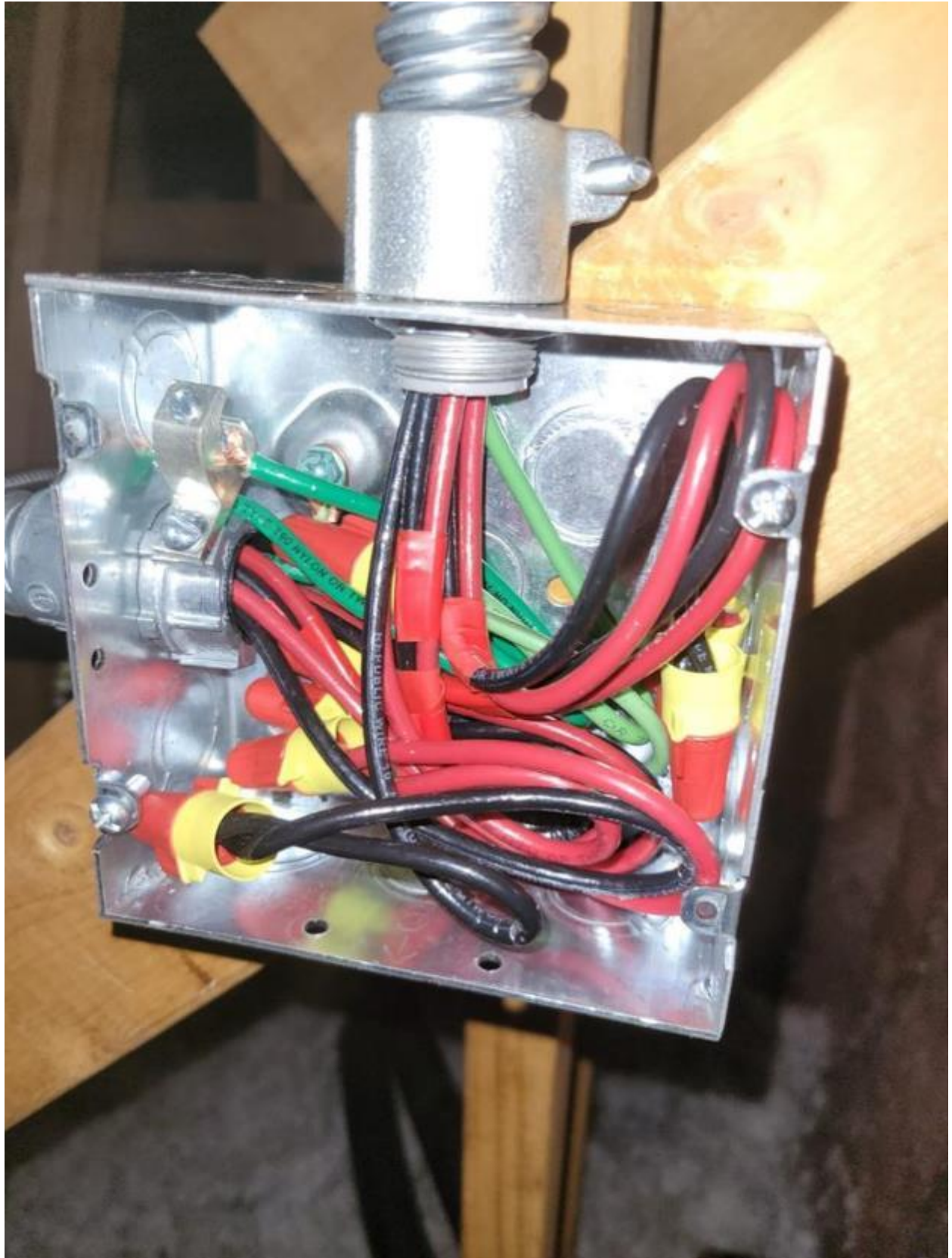


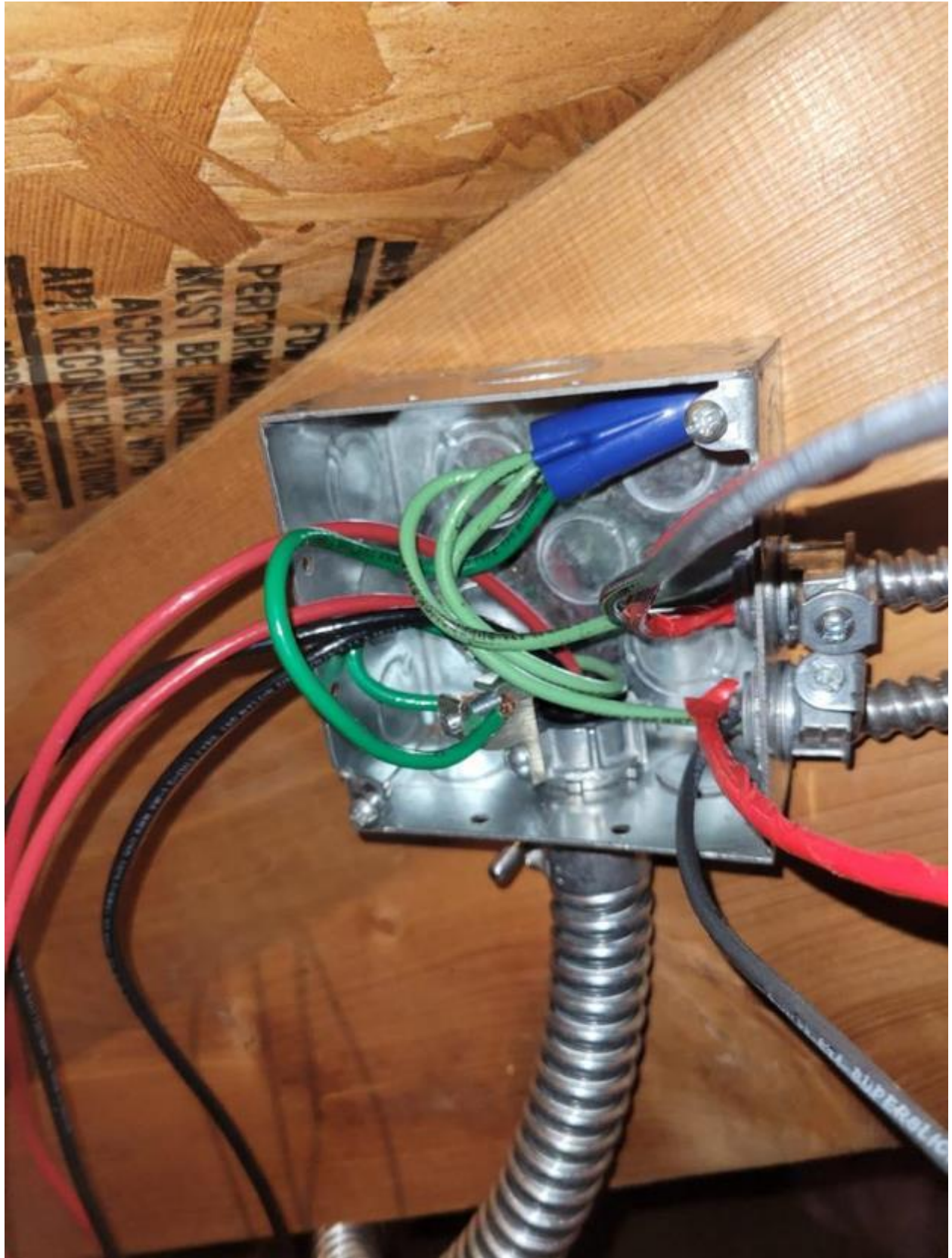




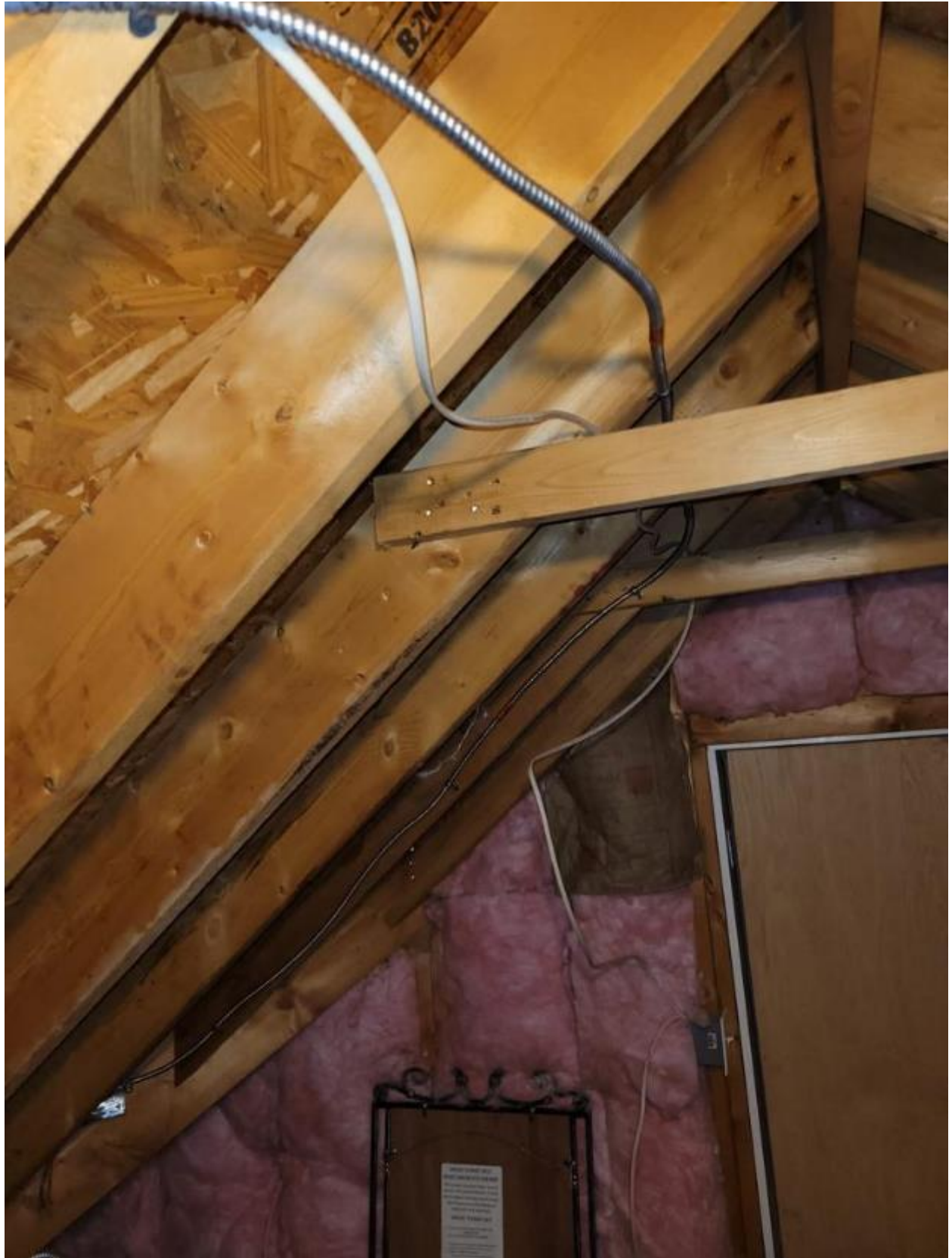


































solar edge SE10000H - US
**Grid Support Utility Interactive
Non-Isolated Photovoltaic Inverter**

Operating Voltage Range 380 - 480Vdc
Max Input Current 27Adc
Max Continuous Output Power 10000Wac
Voltage Min - Nom - Max 211 - 240 - 264Vac
Max Continuous Output Current 42Aac
Max Output Fault Current 55.5Aac
Max Utility Backfeed Current 0Aac
Frequency Min - Nom - Max 59.3 - 60.0 - 60.5Hz
Output Power Factor +/- 0.85 - 1
Max Ambient Temperature 60 C
Enclosure IP65 / Type 3R
With integrated ground fault protection per NEC 690.35 (C)
Type 1 Photovoltaic Arc-Fault Circuit-Protection
COMPLIES WITH SUPPLEMENTAL INTERCONNECTION REQUIREMENTS
Wi-Fi Password: Mg2r1DJb
Activation: ZktA 78vj EsN2 + vMe GAWG S2e0 dJM =

WiFi MAC:
84:D6:C5:28:2E:EE
ZigBee MAC:



PN: SE10000H - US000BN14
SN: SJ1822 - 07406B3E4 - 11

solar edge



PHOTOVOLTAIC RAPID





WARNING
DUAL POWER SUPPLY
SOURCES: UTILITY GRID AND
PV SOLAR ELECTRIC SYSTEM

WARNING
BIPOLAR PHOTOVOLTAIC ARRAY
DISCONNECTION OF NEUTRAL
GROUNDED CONDUCTORS MAY
RESULT IN OVERVOLTAGE ON
ARRAY OR INVERTER

solar**edge** HD wave

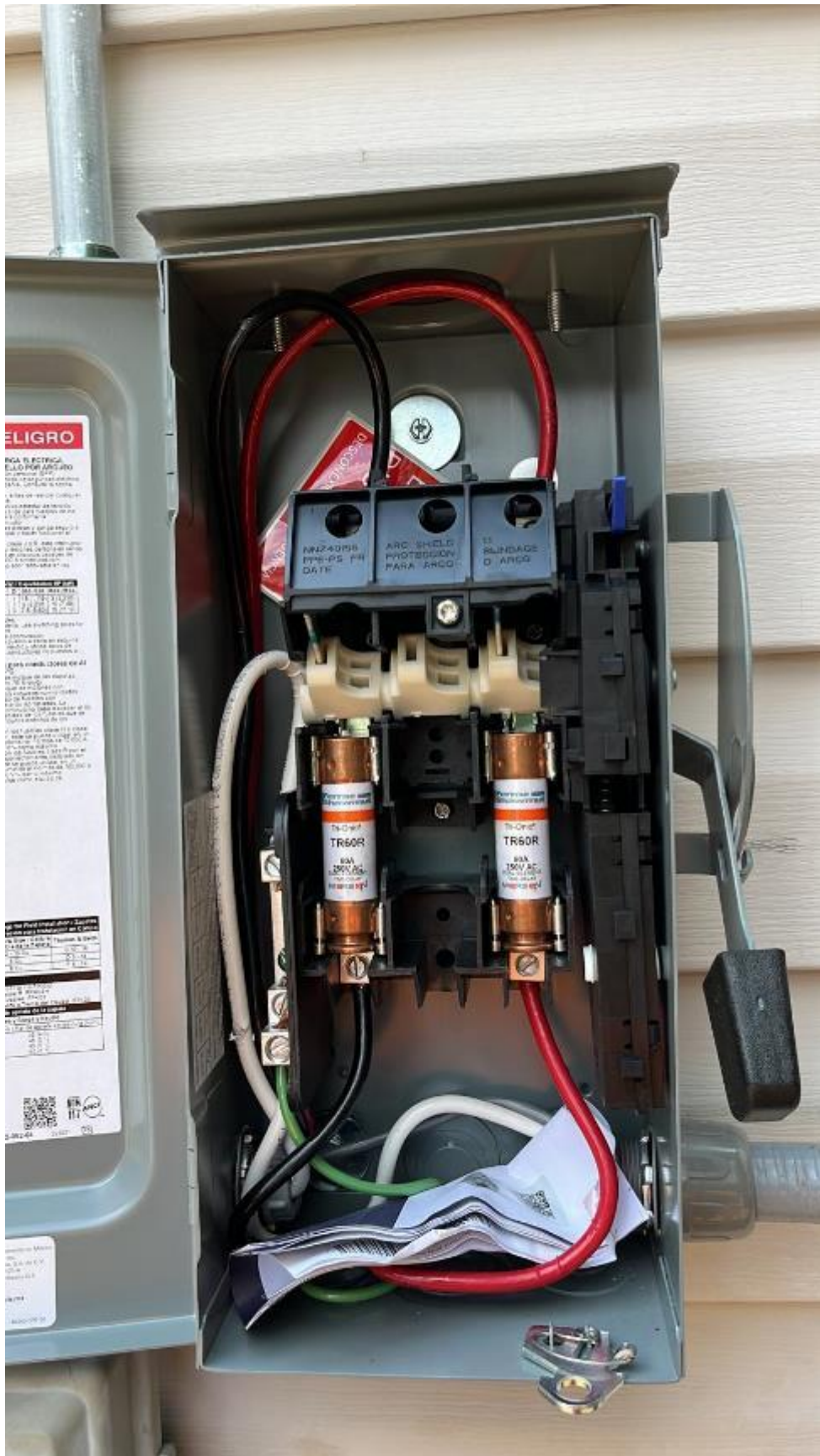
PHOTOVOLTAIC
DC DISCONNECT

ON
OFF

MAXIMUM VOLTAGE 400
MAXIMUM CIRCUIT CURRENT 23.4
MAX. RATED OUTPUT CURRENT
OF THE CHARGE CONTROLLER OR
DC-TO-DC CONVERTER (IF INSTALLED)

solar**edge**







PHOTOVOLTAIC
AC DISCONNECT
**RAPID SHUTDOWN
SWITCH FOR
SOLAR PV SYSTEM**

**GENERAL DUTY
SAFETY SWITCH
INTERRUPTOR DE
SERVICIO GENERAL**
80 A
240 Vac / V~
SEKARE D
⚠ DANGER / PELIGRO
RISK OF ELECTRIC SHOCK. EXPLOSION OR ARC FLASH
RISGO DE DESCARGA ELÉCTRICA, EXPLOSIÓN O
ARQUEO POR ARQUEO

AC DISCONNECT
PHOTOVOLTAIC SYSTEM
POWER SOURCE
RATED AC
OUTPUT CURRENT **42** AMPS
NOMINAL OPERATING
AC VOLTAGE **240** VOLTS

**SERVICE DISCONNECT LOCATED
IN MAIN LOAD PANEL INSIDE THE HOUSE**



