



www.SOLARIX.com

PowerX-400R

Peak Power	(P _{max})	400 W
Power Range		-0 / +5 W
Voltage at P _{max}	(V _{mp})	31.17 V
Current at P _{max}	(I _{mp})	12.84 A
Open Circuit Voltage	(V _{oc})	37.20 V
Short Circuit Current	(I _{sc})	13.66 A
Maximum Series Fuse		30 A

All specs at standard conditions: 1000 W/m², AM1.5 spectrum, 25°C.
Peak irradiance max. 12.4000 (approx) when irradiance is 1000 W/m².



© 2011

902044

Power Measurement Tolerance: ±1%
Open Circuit Voltage Tolerance: ±1%
Short Circuit Current Tolerance: ±1%



WARNING

Caution!

Read all safety instructions.



AVERTISSEMENT

Danger!

Prenez toutes les précautions.

IEC Pre-Firing Class C - UL Type 2
Application Class B

See installation manual for
additional requirements in
terms of Substrate System Pre-
Firing Ratings with the Product.



Maximum Permissible System Voltage: 1000V DC

Made in Thailand

PE110L-0001-01

200 WATERFORD DR, ANGIER, NC 27501, USA



















PEGASUS
SOLAR

END PANEL →



PRS
21-2

C US A









.solaria.com

TIC LOT



Pegasus Solar
Pegasus Splice
10 ea
P#: PGR-SPL





WARNING: NEVER TOUCH THE SURFACES OF THIS PHOTOVOLTAIC
INVERTER WHEN IT IS ENERGIZED.

AVERTISSEMENT

RISQUE DE CHOC ELECTRIQUE: QUAND LE CHAMP
PHOTOVOLTAIQUE EST EXPOSE A LA LUMIERE, UNE
TENSION CC EST FOURNIE A CET EQUIPEMENT.
SURFACES CHAUDES: NE PAS TOUCHER, AFIN DE
REDUIRE LES RISQUES DE BRULURES. LE COURANT
DE RETOUR INJECTE PAR LE CONVERTISSEUR EN
CAS DE DEFAILLANCE DANS LE MODULE PV EST
TOUJOURS NUL.

WCT/A00-C/AACNC
12.5-83V/14.1A

12.5-83V/14.1A

NA23 SV1622A-021ECD7F6-DA
Vietnam P505-4NM4MBM









PEGASUS
SOLAR

END PANEL →



PRS
21-2

C US A





























OUT

30 Pin ATX / 1 Pin ATX

DC Output: 505W/5-80V/1.5A

DC Input: 12.5-83V/14.1A

Circuit Voltage: IV

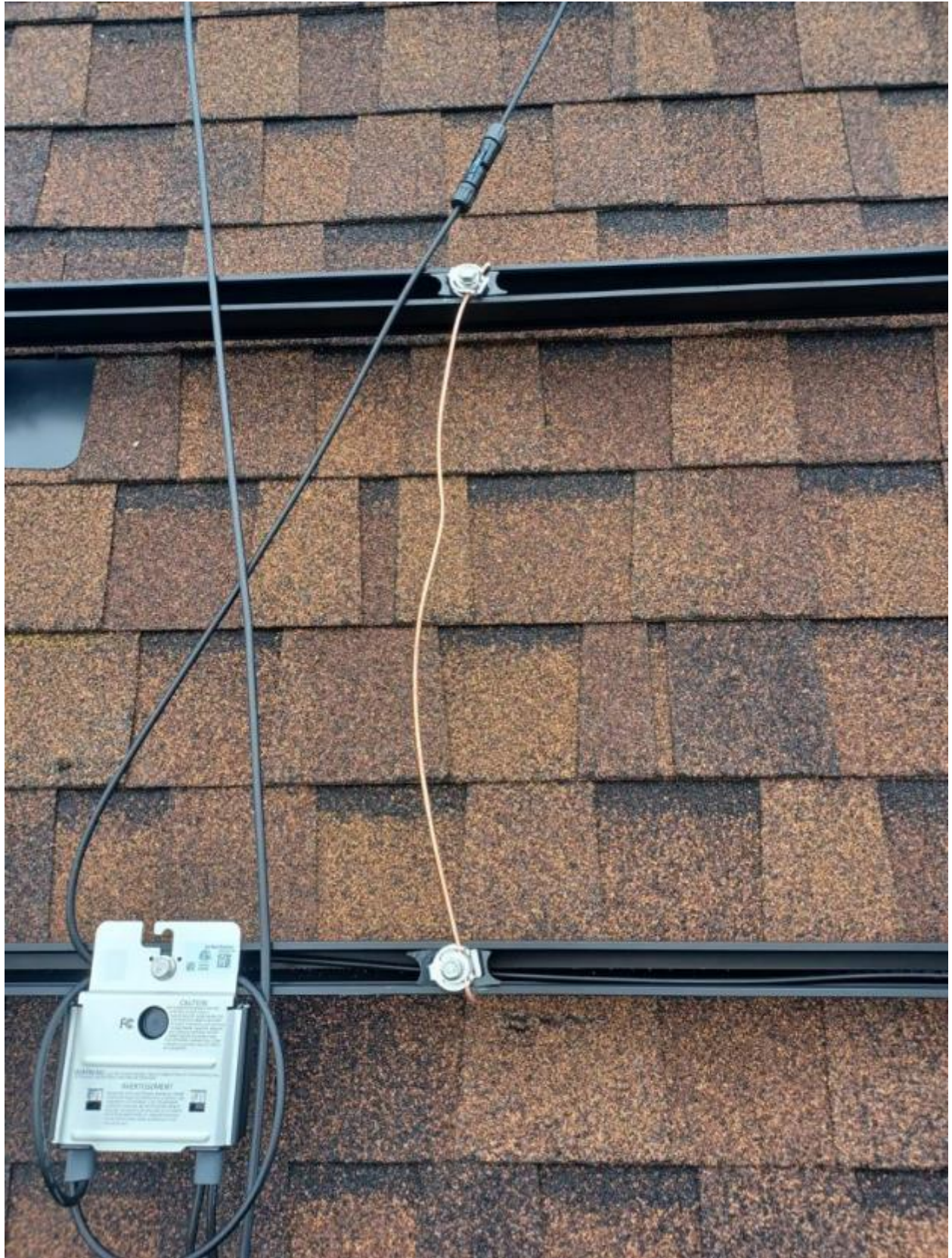
NA23 SV1622A-021ECDE78-63

Vietnam P505-4NH4MBM

MADE IN:





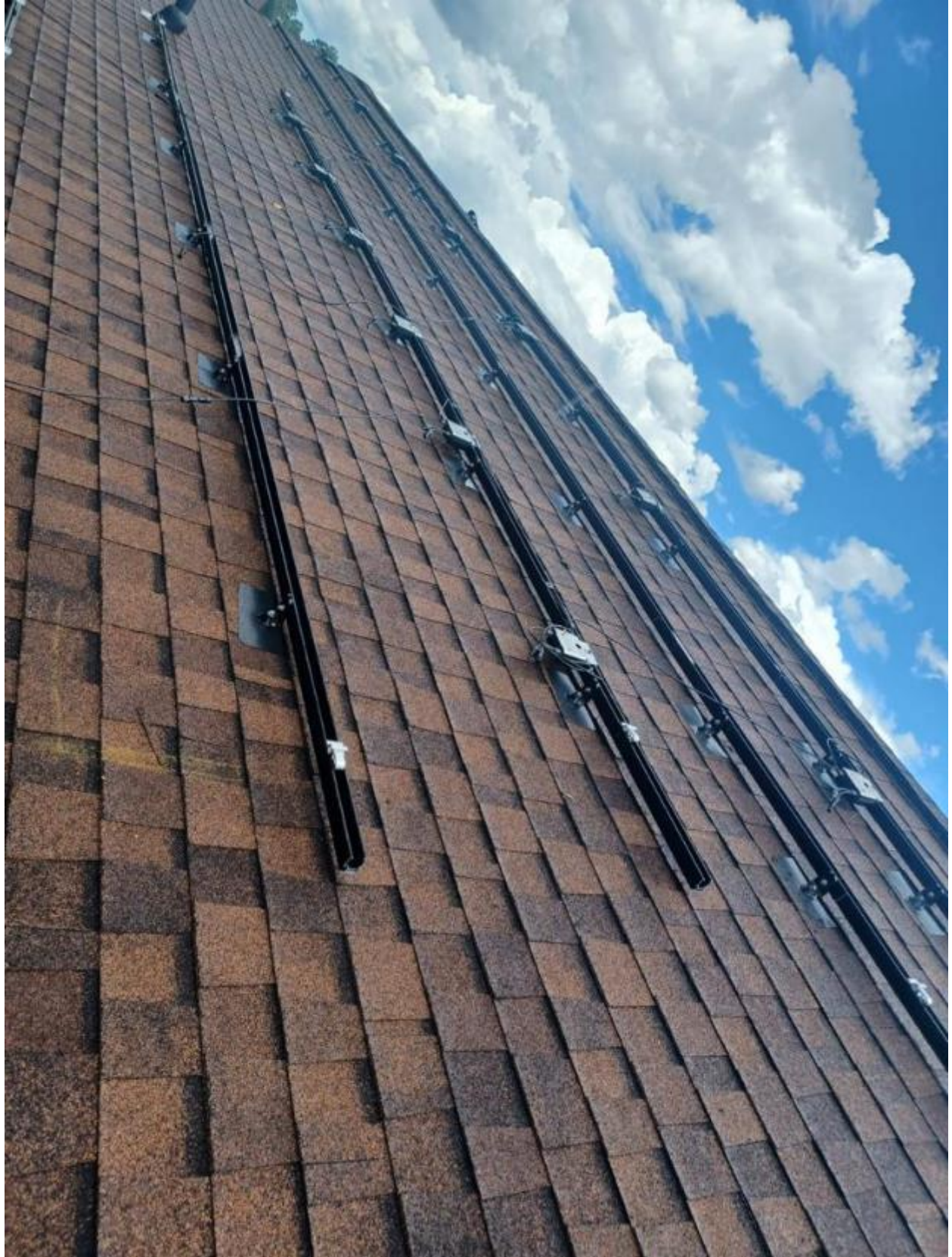




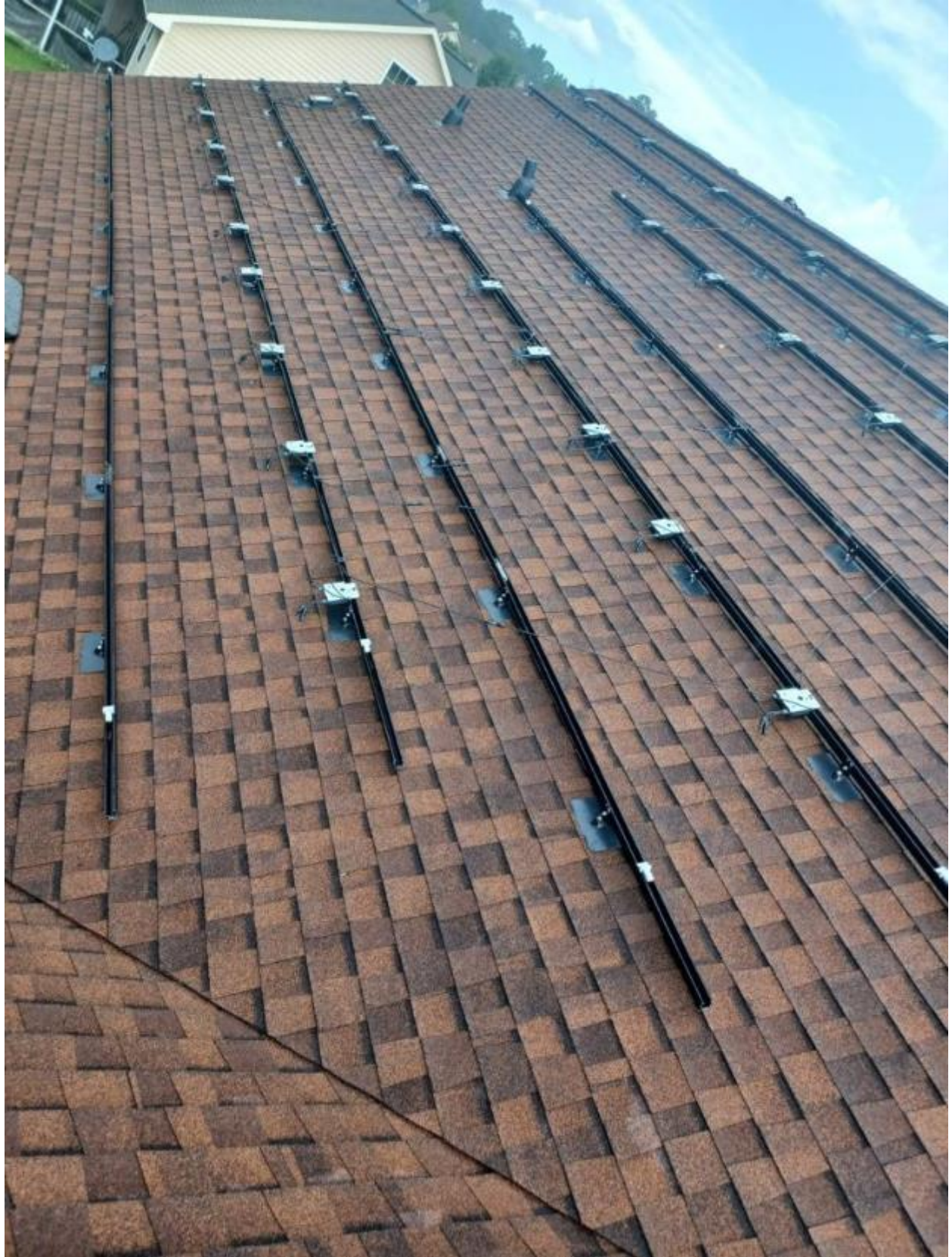




















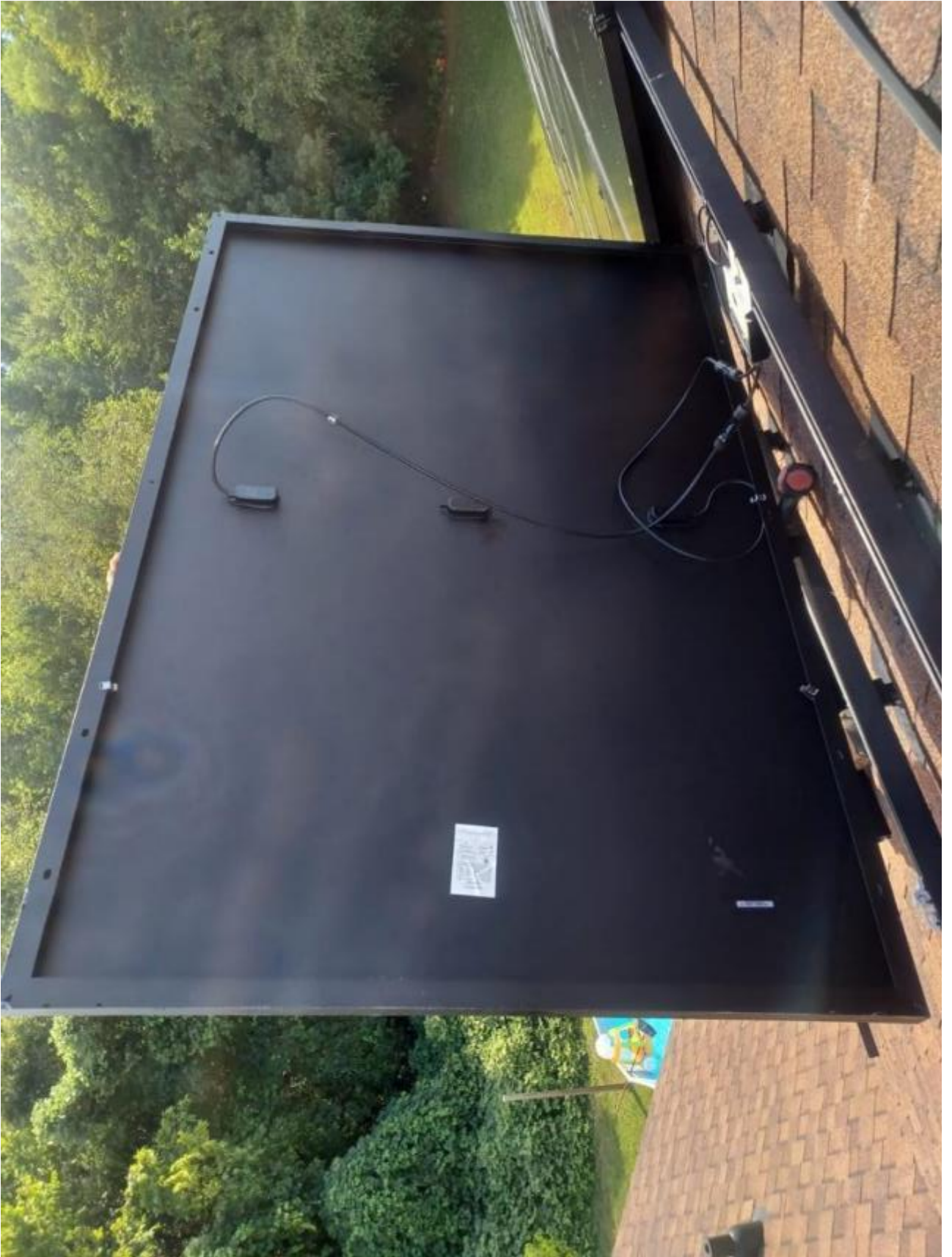




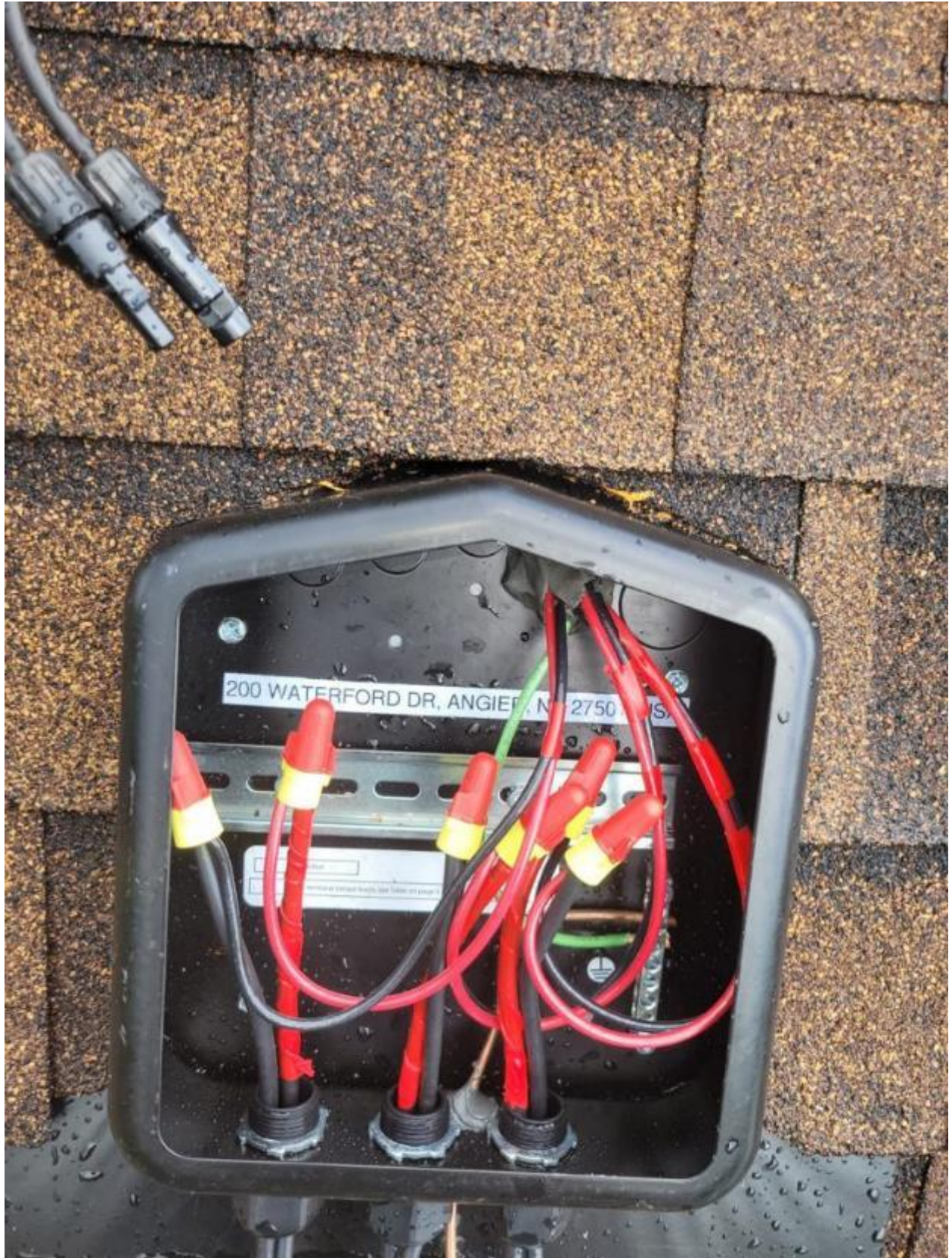






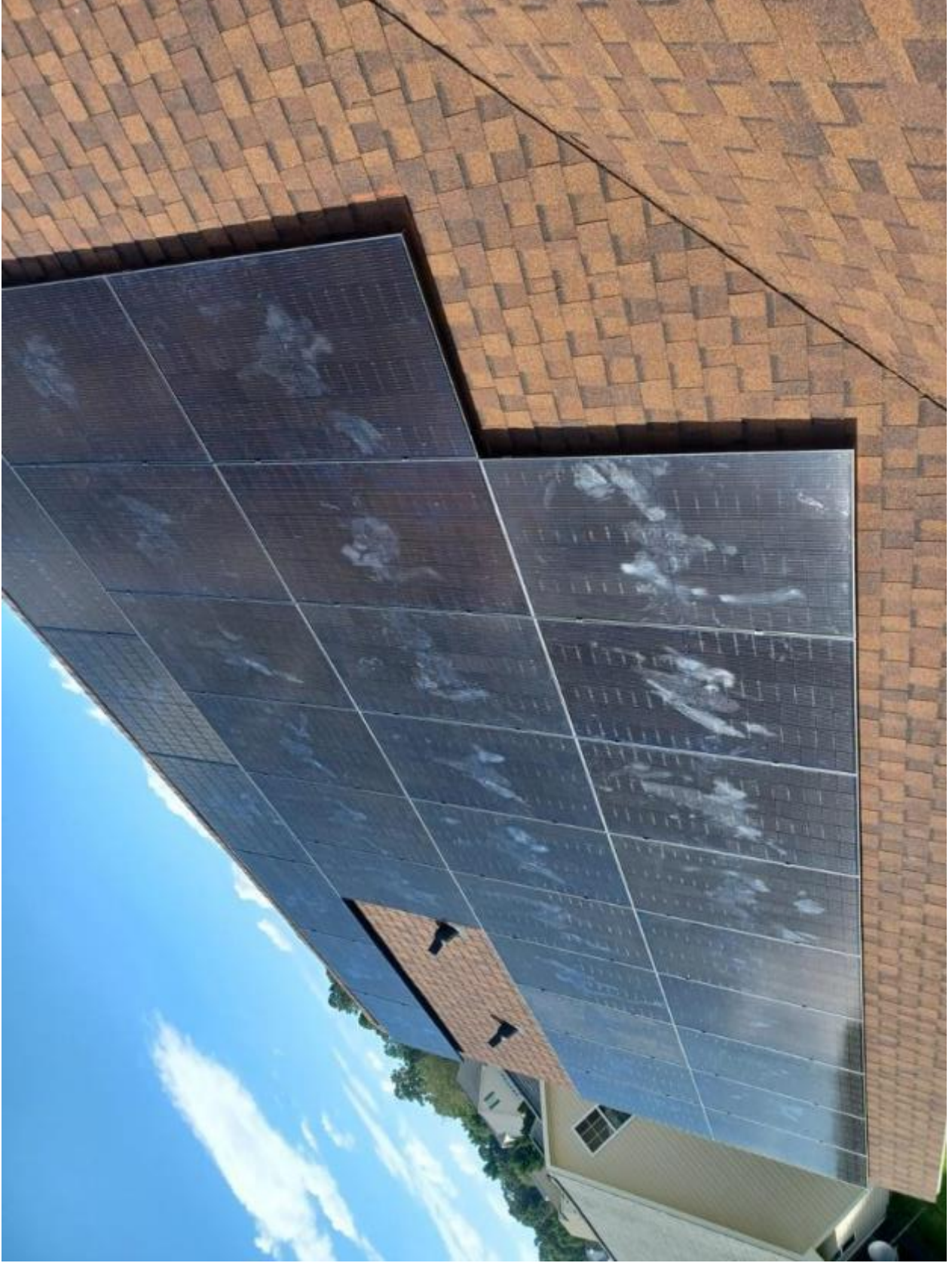


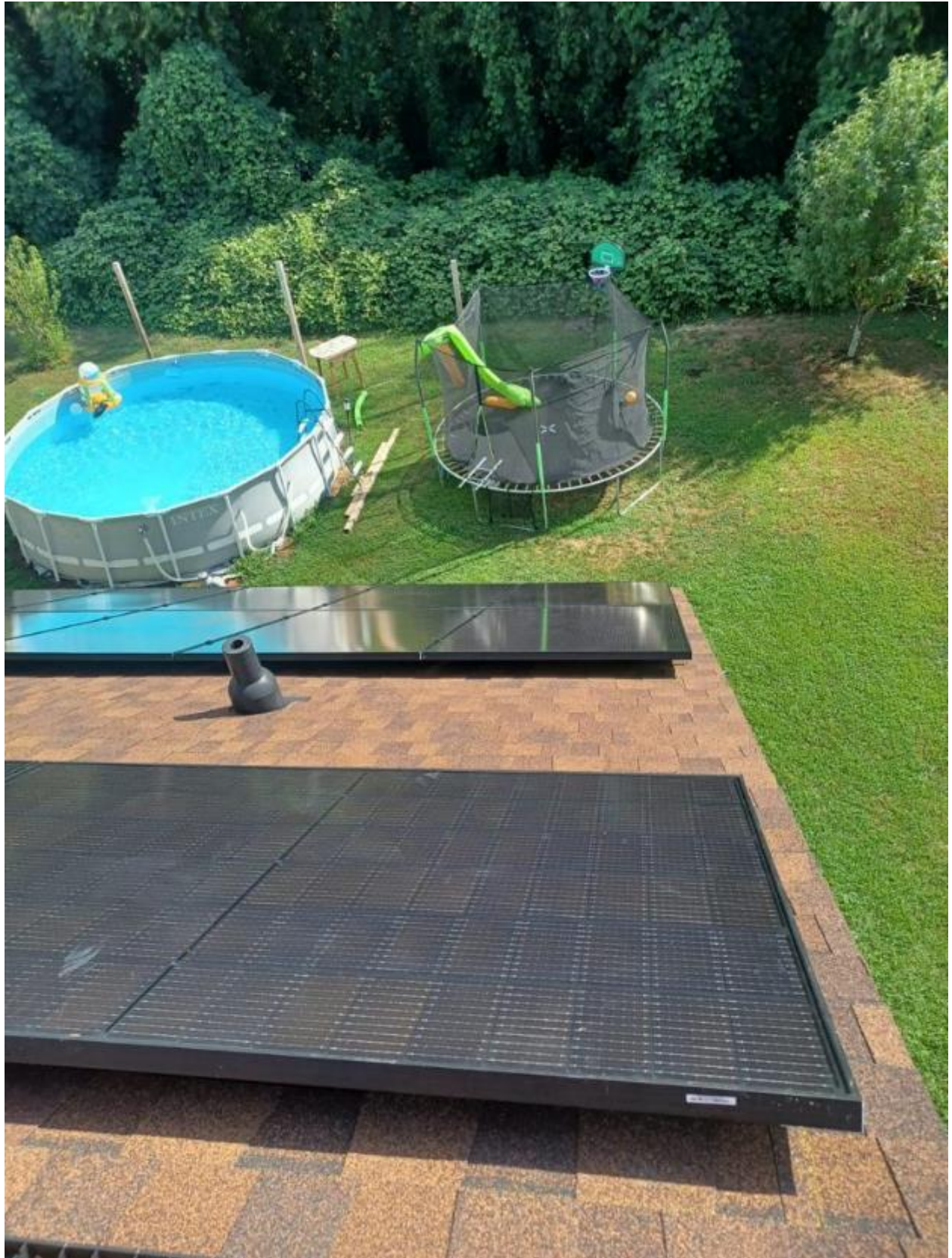












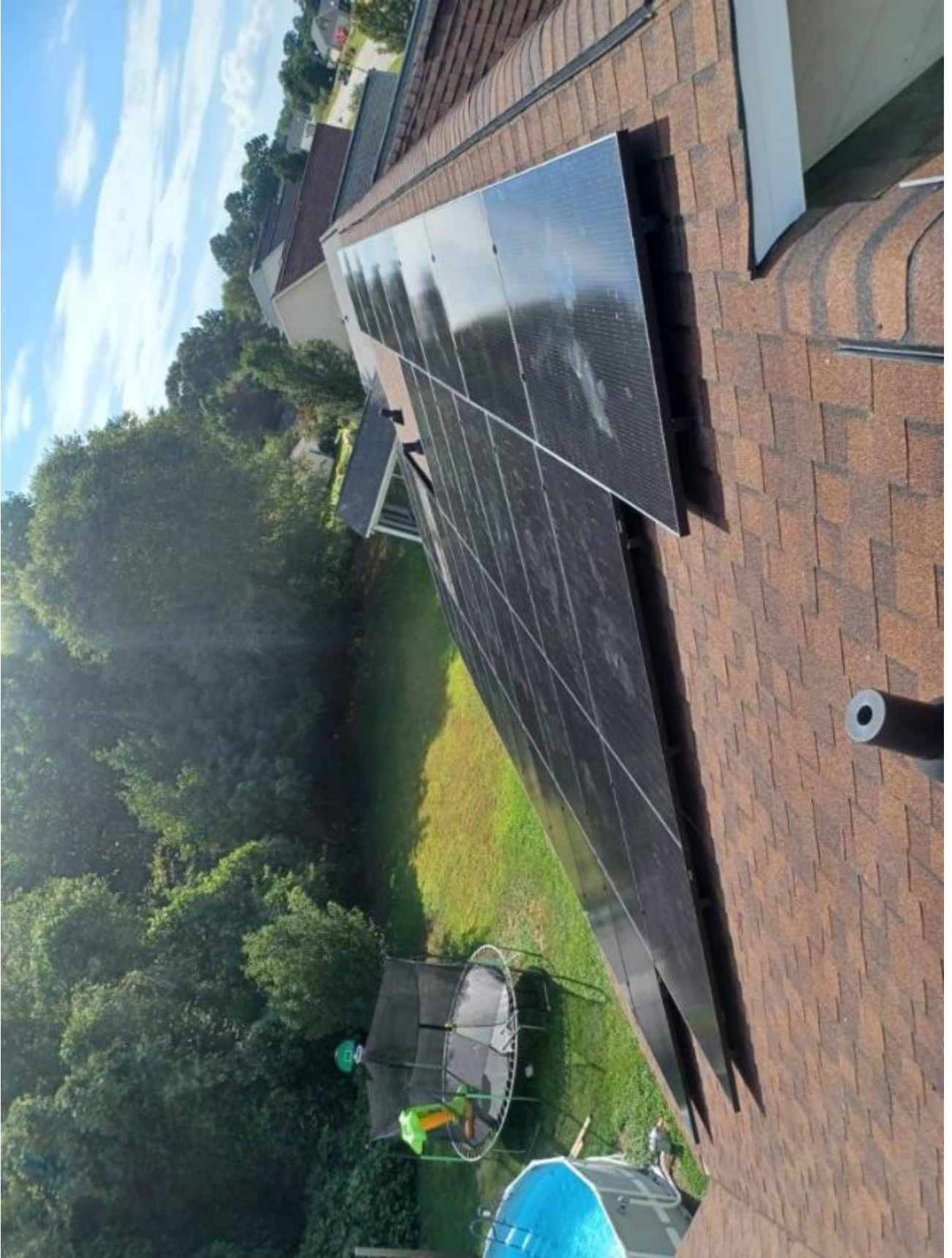


















solar edge SE10000H – US
**Grid Support Utility Interactive
Non – Isolated Photovoltaic Inverter**

Operating Voltage Range	390 – 490Vdc
Max Input Current	27Adc
Max Continuous Output Power	10000Wac
Voltage Min – Nom – Max	211 – 240 – 264Vac
Max Continuous Output Current	42Aac
Max Output Fault Current	56.6Aac
Max Utility Backfeed Current	0Aac
Frequency Min – Nom – Max	59.3 – 60.0 – 60.5Hz
Output Power Factor	+ / – 0.85 – 1
Max Ambient Temperature	60 C
Enclosure	IP65 / Type 3R
With integrated ground fault protection per NEC 690.35 (C)	
Type 1 Photovoltaic Arc – Fault Circuit – Protection	

WI – FI Password: Ck9q2PDp
Activation: QvwO 7tyJ BZWx IUpV IFSB zKvm XF8 –

WiFi MAC:
84:D6:C5:23:68:40
ZigBee MAC:



intertek
4004590

PN: SE10000H – US000BNI4
SN: SV0922 – 0740AED83 – EE



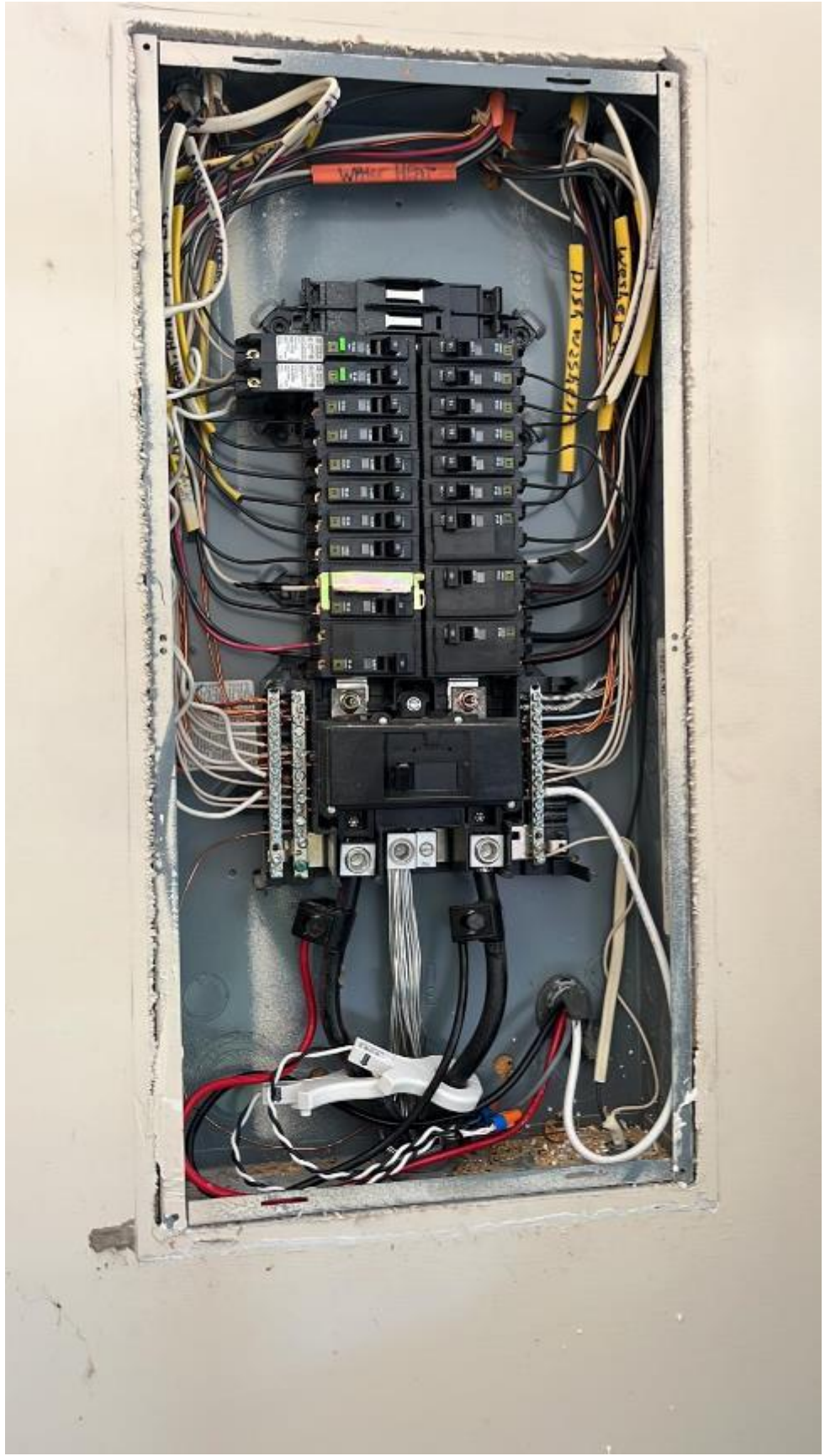
solar edge











WARNING
ELECTRIC SHOCK HAZARD
TERMINALS ON THE LINE AND
LOAD SIDES MAY BE ENERGIZED
IN THE OPEN POSITION

WARNING
DUAL POWER SUPPLY
SOURCES: UTILITY GRID AND
PV SOLAR ELECTRIC SYSTEM

SOLAR AC DISCONNECT LOCATED AT
NORTH-WEST SIDE WALL OF THE HOUSE
BEHIND THE UTILITY METER

WARNING
TURN OFF PHOTOVOLTAIC
AC DISCONNECT PRIOR TO
WORKING INSIDE PANEL

WARNING
THIS EQUIPMENT FED BY MULTIPLE
SOURCES. TOTAL RATING OF ALL
OVERCURRENT DEVICES, EXCLUDING
MAIN SUPPLY OVERCURRENT
DEVICE, SHALL NOT EXCEED
CAPACITY OF BUSBAR.

**SOLAR PV SYSTEM EQUIPPED
WITH RAPID SHUTDOWN**

TURN RAPID SHUTDOWN
SWITCH TO THE
"OFF" POSITION TO
SHUT DOWN PV SYSTEM
AND REDUCE
SHOCK HAZARD
IN THE AREA



PHOTOVOLTAIC POWER SOURCE
OPERATING AC VOLTAGE: 240
MAXIMUM OPERATING
AC OUTPUT CURRENT: 42

PHOTOVOLTAIC

AC DISCONNECT

**RAPID SHUTDOWN
SWITCH FOR
SOLAR PV SYSTEM**



**GENERAL DUTY
SAFETY SWITCH
INTERRUPTOR DE
SEGURIDAD DE
SERVICIO GENERAL**
60 A
240 Vac / V-

SQUARE D

⚠ DANGER / PELIGRO



**HAZARD OF ELECTRIC SHOCK, EXPLOSION OR ARC FLASH
PELIGRO DE DESCARGA ELECTRICA, EXPLOSION O
ELECTRICO POR ARQUEO**

- Before working on the power source or equipment (PSE) and before any electrical work is done, see the instructions on the PSE.
- The equipment must only be installed and serviced by qualified personnel.
- Never connect electrical loads with open ends. They can be deadly.
- Turn off each device and equipment installed from the main load panel.
- Always use a voltage tester to verify voltage levels on all wires and load terminals before working on them.
- Do not use electrical loads on other switches.
- Failure to follow these instructions will result in death or serious injury. For more information, please contact your local utility or electrical contractor.

- Antes de trabajar en el equipo (PSE) o en el equipo de la fuente de energía, consulte las instrucciones en el PSE.
- El equipo debe instalarse y ser servido únicamente por personal calificado.
- Nunca conecte cargas eléctricas con los extremos abiertos. Pueden ser mortales.
- Desconecte el interruptor antes de instalar o quitar cualquier dispositivo conectado en el bus de carga.
- Siempre utilice un detector de tensión cuando trabaje en los cables y terminales de los cables de carga y asegúrese de que el interruptor esté apagado.
- Encuentre el interruptor antes de trabajar en él. No toque los cables de los cables de carga.
- No utilice cables de otros dispositivos en los interruptores de carga.
- El incumplimiento de estas instrucciones puede resultar en la muerte o lesiones graves. Para obtener más información, consulte a su proveedor de servicios eléctricos o a un electricista calificado.

**SERVICE DISCONNECT LOCATED
IN THE MAIN LOAD PANEL**

**AC DISCONNECT
PHOTOVOLTAIC SYSTEM
POWER SOURCE**
RATED AC
OUTPUT CURRENT **42** AMPS
NOMINAL OPERATING VOLTAGE





⚠ WARNING
DUAL POWER SUPPLY
(SOURCE: UTILITY GRID AND PV SOLAR ELECTRIC SYSTEM)

⚠ WARNING
BIPOLAR PHOTOVOLTAIC ARRAY
DISCONNECTION OF NEUTRAL
GROUNDING CONDUCTORS MAY
RESULT IN OVERVOLTAGE ON
ARRAY OR INVERTER

solar**edge** HD wave

PHOTOVOLTAGE
DISCONNECT
MAXIMUM VOLTAGE 400V
MAXIMUM CIRCUIT CURRENT 20.4A
MAXIMUM OUTPUT CURRENT OF THE CHARGE CONTROLLER OR DC-TO-DC CONVERTER IF APPLICABLE







