











ENGINEERED, DESIGNED AND QUALITY TESTED BY Q CELLS IN GERMANY

Q.PEAK DUO BLK ML-G10+ 400

Q CELLS

PERFORMANCE AT STANDARD TEST CONDITIONS*

Nominal Power* (+5W/-0W)	P_{MPP}	[W]	400
Short circuit current*	I_{SC}	[A]	11.14
Open circuit voltage*	V_{OC}	[V]	45.30
Current at maximum power	I_{MPP}	[A]	10.77
Voltage at maximum power	V_{MPP}	[V]	37.13
Maximum system voltage	V_{SYS}	[V]	1000(IEC) 1000(UL)
Weight	M	[kg / lbs]	22.0 / 48.5

Assembled in USA



DANGER!

Risk of electric shock!
DO NOT connect or disconnect plug contacts while system is under load current. Refer to the Installation and Operation Manual before installing, operating or servicing this unit.

DANGER!

Risque de choc électrique!
NE PAS connecter ou déconnecter les connecteurs lorsque le système est en charge. Consultez le manuel d'installation et d'utilisation avant installation, utilisation et entretien du produit.

Fire Rating: Class C / Type 2

Design load: 55 lbs/ft²

Fuse Rating: 20 A

For field connections, use minimum No.12 AWG copper wires insulated for a minimum of 90°C

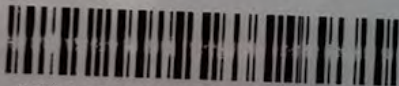
U.S. Patent No. 9,893,215
(solar cells)

EMAIL service@q-cells.com
WEB www.q-cells.com

*Measurement tolerances: $P_{MPP} \pm 3\%$; I_{sc} , $V_{oc} \pm 5\%$ at STC: 1000 W/m², 25 ± 2°C, AM 1.5 according to IEC 60904-3. Data given are rated (nominal) values. IEC 61215:2016; IEC 61730:2016.

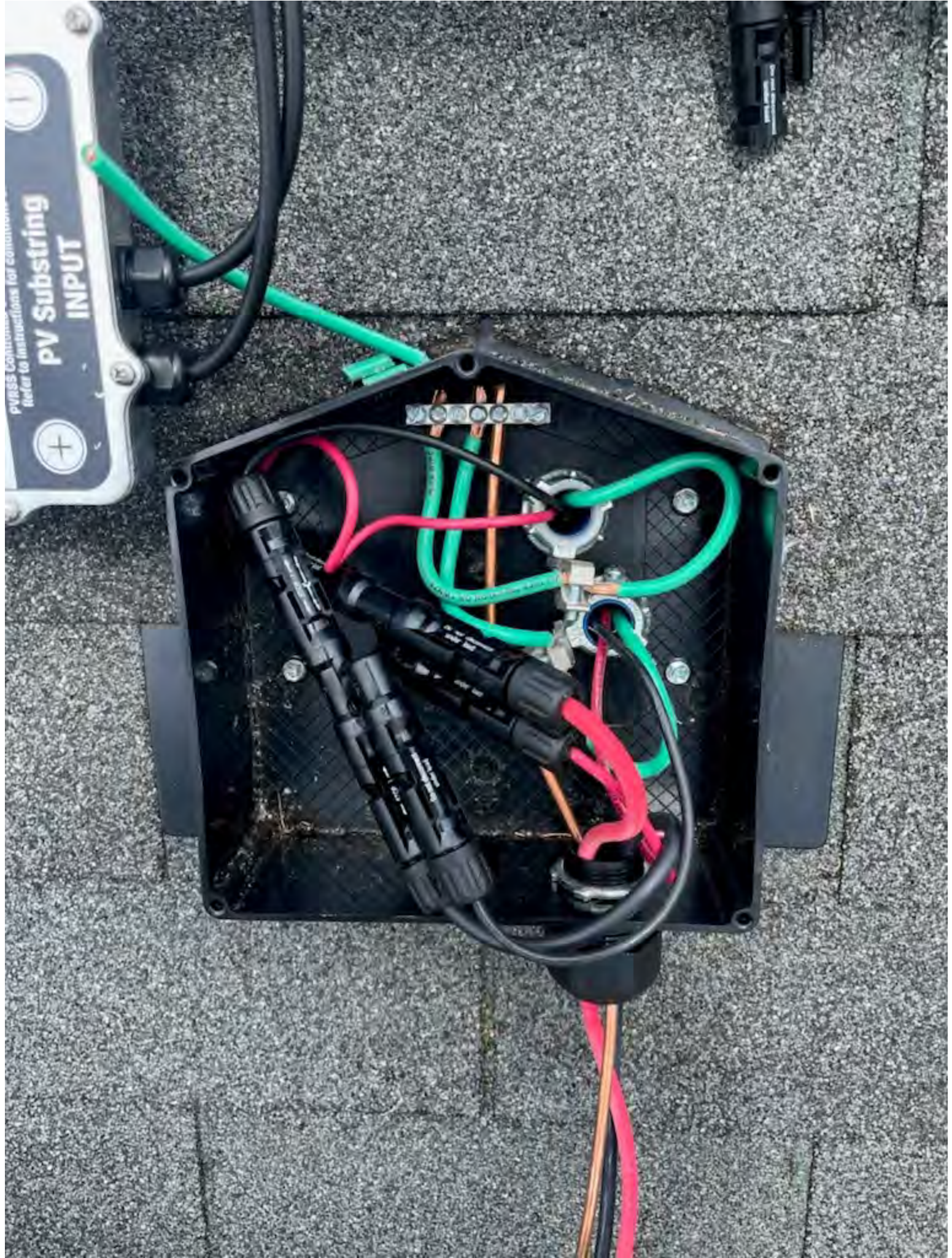


www.tuv.com
ID1111220277



203222244557402349

Hanwha Q CELLS USA Inc.,
300 Nexus Drive, Dalton GA 30721, USA
Certification holder: Hanwha Q CELLS GmbH





WARNING
DO NOT TOUCH
OR OPEN UP THE
METER

CENTRAL FUSE

TERMINAL
1003201

TERMINAL
1003201

WARNING
DO NOT TOUCH
OR OPEN UP THE
METER

ON

OFF

GENERAC
PWRCELL

DC DISCONNECT
RAPID SHUTDOWN
SWITCH FOR
SOLAR PV SYSTEM

DO NOT REMOVE

QR CODE

WARNING
DO NOT TOUCH
OR OPEN UP THE
METER

**PHOTOVOLTAIC SYSTEM
AC DISCONNECT**

WARNING

DUAL POWER SUPPLY

SOURCES: UTILITY GRID AND PV SYSTEM ELECTRIC SYSTEM

ELECTRIC SHOCK HAZARD

DO NOT TOUCH TERMINALS
TERMINALS ON BOTH THE LINE AND LOAD SIDES
MAY BE ENERGIZED IN THE OPEN POSITION.

OPERATING VOLTAGE **240** VOLTS
OPERATING CURRENT **40** AMPS

ON ↑

General Duty
Safety Switch

by ABB

60 AMP 240VAC HP15

DANGER

HAZARD OF ELECTRICAL SHOCK BURN OR EXPLOSION INSTRUCTIONS INSIDE COVER.	DANGER D'ELECTROCUTION DE BRULURES OU D'EXPLOSION INSTRUCTIONS AU DOS DU COUVERCLE.
---	--

**FAILURE TO FOLLOW
THE INSTRUCTIONS BELOW
WILL RESULT IN
ELECTRICAL SHOCK
SEVERE PERSONAL
INJURY OR DEATH.**

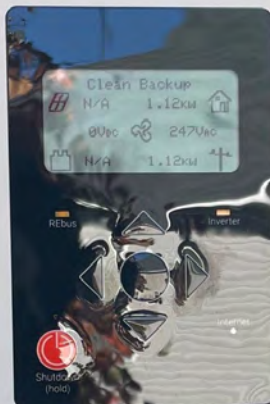
- Never operate switch with door open.
- Turn off switch before removing or installing fuses or making load side connections.
- Always use a properly rated voltage sensing device at all line and load side fuse clips to confirm switch is off.
- Turn off power supplying switch before doing any other work on or inside switch.

OFF ↓

NP266211B

GENERAC

PWRCELL

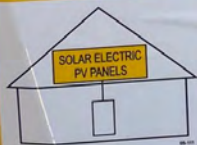


DC DISCONNECT

RAPID SHUTDOWN SWITCH FOR SOLAR PV SYSTEM

SOLAR PV SYSTEM EQUIPPED WITH RAPID SHUTDOWN

TURN RAPID SHUTDOWN SWITCH TO THE "OFF" POSITION TO SHUT DOWN PV SYSTEM AND REDUCE SHOCK HAZARD IN THE ARRAY



DO NOT REMOVE
UNTIL INSTALLATION IS COMPLETE



SCAN FOR INSTALLATION STEPS AND RESOURCES OR VISIT Generac.com/Startup

System Registration:
Register your system to activate Warranty, PWRview and PWRflex!

Live Firmware Updates:
1-855-395-7841
8:00am-8:00pm ET, Mon-Sat

After-hours Software Update:
Generac.com/PWRcellUpdate

System Registration Information:
SERIAL NUMBER: XVT07-28935
REGISTRATION CODE: JCRA-PVYK

POWER CORE

ON

OFF

OFF for PV Rapid Shutdown Initiation
of the REbus before turning back ON

RE4

ON

OFF

OFF

OFF

RE1 RE3 RE4 RE2

FUSE LOCATION / EMPLACEMENT DU FUSIBLE

WARNING: FOR CONTINUED PROTECTION AGAINST RISK OF FIRE, REPLACE ONLY WITH SAME TYPE AND RATINGS OF FUSE.

DC INPUT FUSE SPECIFICATION:
40A 600V AC/DC
FERRAZ P/N: A60Q40-2

ATTENTION: POUR LA PROTECTION CONTINUE CONTRE LES RISQUES D'INCENDIE, REMPLACER UNIQUEMENT AVEC LE MÊME TYPE ET COTES DE FUSE.

SPÉCIFICATION DE FUSIBLE D'ENTRÉE CC:
40A 600V CA/CC
FERRAZ NP: A60Q40-2

PROTECTED LOADS

ON

OFF

50A 240V

CTs

ATS

AC wiring terminals

WARNING: ...

AVERTISSEMENT: ...

N1

L1

L2

L3

N2

L1

L2

PHOTOVOLTAIC POWER SOURCE

30A DC Disconnects

PANELS | BATTERY

ON OFF ON OFF

! Turn OFF for PV Rapid Shutdown Initiation
Disable REbus before turning back ON

PANELS RE4:

ON OFF ON OFF

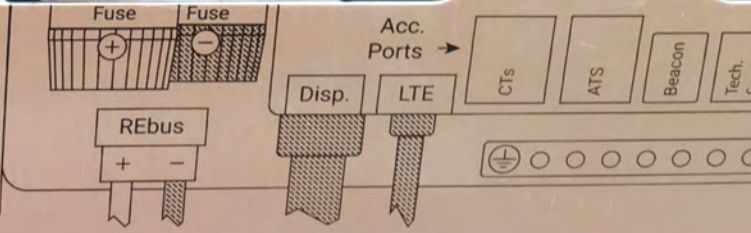
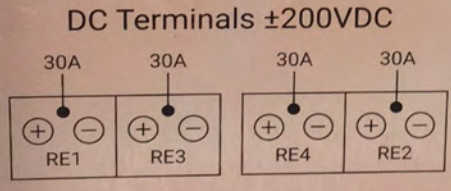
FUSE LOCATION / EMPLACEMENT DU FUSIBLE

WARNING: FOR CONTINUED PROTECTION AGAINST RISK OF FIRE, REPLACE ONLY WITH SAME TYPE AND RATINGS OF FUSE.

ATTENTION: POUR LA PROTECTION CONTINUE CONTRE LES RISQUES D'INCENDIE, REMPLACER UNIQUEMENT AVEC LE MÊME TYPE ET COTES DE FUSE.

DC INPUT FUSE SPECIFICATION:
40A 600V AC/DC
FERRAZ P/N: A60Q40-2

SPÉCIFICATION DE FUSIBLE D'ENTRÉE CC:
40A 600V CA/CC
FERRAZ N°: A60Q40-2



GENERAC

NO USER SERVICEABLE PARTS INSIDE

DO NOT REMOVE THIS COVER

WARNING: RISK OF ELECTRIC SHOCK. DO NOT REMOVE COVER. NO USER SERVICEABLE PARTS INSIDE. REFER SERVICING TO QUALIFIED SERVICE PERSONNEL.

WARNING: RISK OF ELECTRIC SHOCK. BOTH AC AND DC VOLTAGE SOURCES ARE TERMINATED INSIDE THIS EQUIPMENT. EACH CIRCUIT MUST BE INDIVIDUALLY DISCONNECTED BEFORE SERVICING.

WARNING: RISK OF ELECTRIC SHOCK. WHEN THE PHOTOVOLTAIC ARRAY IS EXPOSED TO LIGHT, IT SUPPLIES A DC VOLTAGE TO THIS EQUIPMENT.

WARNING: RISK OF ELECTRIC SHOCK. NORMALLY GROUNDED CONDUCTORS MAY BE UNGROUNDED AND ENERGIZED WHEN A GROUND FAULT IS INDICATED.

WARNING: CONTACTS ON EITHER SIDE OF THE DEVICE MAY BE ENERGIZED. ALL DISCONNECTING MEANS MUST BE OPENED TO ENSURE COMPLETE DE-ENERGIZATION.

WARNING: DC INPUT NON-ISOLATED FROM AC OUTPUT

CAUTION: UTILITY INTERACTIVE. ONLY USE COPPER CONDUCTORS RATED FOR > 90°C

CAUTION: THIS UNIT IS NOT PROVIDED WITH A SPD DEVICE. THIS INVERTER OR CHARGE CONTROLLER MUST BE USED WITH AN EXTERNAL SPD DEVICE AS REQUIRED BY THE ARTICLE 690 OF THE NATIONAL ELECTRICAL CODE FOR THE INSTALLATION LOCATION.

CAUTION: RISK OF ELECTRIC SHOCK FROM ENERGY STORED IN CAPACITOR. DO NOT REMOVE COVER UNTIL 3 MINUTES AFTER DISCONNECTING ALL SOURCES OF SUPPLY.

CAUTION: MULTIPLE LIVE CIRCUITS. REFER TO INSTALLATION MANUAL.

AVERTISSEMENT: RISQUE DE CHOC ÉLECTRIQUE. NE PAS RETIRER LE COUVERCLE. AUCUNE PIÈCE INTERNE N'EST RÉPARABLE PAR L'UTILISATEUR. CONFIER L'ENTRETIEN AU PERSONNEL QUALIFIÉ.

AVERTISSEMENT: RISQUE DE CHOC ÉLECTRIQUE. CA ET CC SOURCES DE TENSION SONT TERMINÉES À L'INTÉRIEUR DE CET APPAREIL. CHAQUE CIRCUIT DOIT ÊTRE INDIVIDUELLEMENT DÉBRANCHÉ AVANT L'ENTRETIEN.

AVERTISSEMENT: RISQUE DE CHOC ÉLECTRIQUE. QUAND LA MATRICE PHOTOVOLTAÏQUE EST EXPOSÉE À LA LUMIÈRE, ELLE FOURNIT UNE TENSION CONTINUE À CET ÉQUIPEMENT.

AVERTISSEMENT: RISQUE DE CHOC ÉLECTRIQUE. LES CONDUCTEURS NORMALEMENT MIS EN TERRE PEUVENT ÊTRE RENDUS NON MIS ET PEUVENT FAIRE UNE TENSION ÉLECTRIQUE AU PRÉSENT D'UN DÉFAUT À LA MASSE.

AVERTISSEMENT: COUPER TOUTES LES SOURCES D'ALIMENTATION AVANT DE FAIRE L'ENTRETIEN ET LES RÉPARATIONS.

AVERTISSEMENT: ENTRÉE C.C. NON ISOLÉE DE LA SORTIE C.A.

ATTENTION: UTILISER UN INTERACTIF. UTILISER UNIQUEMENT DES CONDUCTEURS EN CUivre CLASSÉS POUR ÊTRE TRAVAILLÉS DE 90°C.

ATTENTION: CET APPAREIL NE DOIT PAS ÊTRE UTILISÉ EN CONJONCTION AVEC UN DISPOSITIF SPD DE CONTRÔLEUR DE CONDUCTEUR OU DE LA CHARGE AVEC UNE SPD. UN DISPOSITIF DE CONTRÔLE DE CONDUCTEUR DOIT ÊTRE REQUIS PAR L'ARTICLE 690 DU CODE NATIONAL DE LA PROTECTION ÉLECTRIQUE POUR LA LOCALISATION D'INSTALLATION.

ATTENTION: RISQUE DE CHOC ÉLECTRIQUE D'ÉNERGIE STOCKÉE DANS LE CONDENSATEUR. NE PAS OUVRIRE JUSQU'À 3 MINUTES APRÈS LA DÉCONNEXION DE TOUTES LES SOURCES DE TENSION.

ATTENTION: MULTIPLE CIRCUITS EN VIE. RÉFÉRENCEZ-VOUS À LA MANUELLE D'INSTALLATION.

Generac Grid Support Utility Interactive Inverter

XVT076A03 Part of the Generac PWRcell

Photovoltaic (PV) Rapid Shutdown Equipment

Generac Power Systems, Inc.



Conforms to UL STD. 1741,
UL STD. 1741SA
Certified to CSA STD. C22.2 #107.1

REbus power (max):	7600 W
REbus input voltage:	± 180-210 VDC
REbus input current (DC) (max):	± 20 A
Efficiency (max):	98%
Normal output frequency:	60hz
Max. cont. output power (AC) (grid tied):	7600W (120/240) (VAC)
Max. cont. output power (AC) (islanded):	7600W
Operating AC voltage range:	108-130 VAC (120VAC nom)
Max. cont. output current (AC):	32 A
Max. utility backfeed current:	0 A
Output power factor:	> 0.99
Ambient operating temp. (min, max):	-20°C, 50°C
Serial number:	XVT07-29935
Date of manufacture:	Q2-22
Manufacturing facility:	B
Enclosure:	Type 3R

WARNING
CANCER AND REPRODUCTIVE HARM - www.PSSWarnings.ca.gov
100000358223

 **WARNING** 
DUAL POWER SUPPLY
SOURCES: UTILITY GRID AND
PV SOLAR ELECTRIC SYSTEM

pvlabs.com

03-211



GE PowerMark Gold™
Load Center

8 / 16 Circuit
 Load Center

IF BREAKER TRIPS:
 1. Move handle to ON position.
 2. Move handle to OFF position.
 3. Wait 30 seconds.
 4. Repeat steps 1 and 2.
 5. If breaker still trips, call a qualified electrician.

Type 3R RAINPROOF ENCLOSURE
 Cat. No. TLM812RCU
 Use Only GE Type Breakers

Use Copper Or Aluminum Wire
 Use 60 or 75°C ampacity and wire on listed neutral terminals. See Circuit Breakers for their wire temperature ratings.

Country of Origin, Mexico
 SAL7338 1008575763

FAMILY ROOM
GARAGE
KITCHEN REPS

IF BREAKER TRIPS:
 1. Move handle to ON position.
 2. Move handle to OFF position.
 3. Wait 30 seconds.
 4. Repeat steps 1 and 2.
 5. If breaker still trips, call a qualified electrician.

Type 3R RAINPROOF ENCLOSURE
 Cat. No. TLM812RCU
 Use Only GE Type Breakers

Use Copper Or Aluminum Wire
 Use 60 or 75°C ampacity and wire on listed neutral terminals. See Circuit Breakers for their wire temperature ratings.

Country of Origin, Mexico
 SAL7338 1008575763

⚡ DANGER
 Hazard of electric shock or burn. Turn off power before working inside the enclosure.

⚡ DANGER
 Hazard of electric shock or burn. Turn off power before working inside the enclosure.

Use of other circuit breakers in this enclosure may void the U.S. listing. The listing is for the breaker assembly as shown. The use of other breakers may void the listing. The use of other breakers may void the listing. The use of other breakers may void the listing.

15A OFF

20 OFF

20 OFF

2

4

6

8



QUALITY GATE
QG1 206453
QG2 N/A
QG3 200...

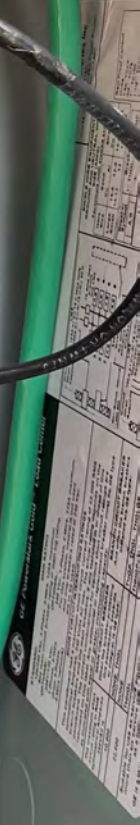
TOP
SAL 2013
INSPECTION T-30206338

The image shows a GE circuit breaker assembly with two breakers. The top breaker is labeled "OFF 20A" and the bottom one is labeled "OFF 15A". Both have "ON" and "OFF" positions. The assembly is connected to a terminal block on the left and another on the right. Wires include red, black, green, and white. A green ground wire is connected to a terminal on the right. The breakers are mounted on a metal base with mounting tabs.

A terminal block on the left side of the panel has several wires connected to it. The wires are red, black, and white. Some wires are bundled together with electrical tape. The terminal block is mounted on a metal strip. The wires are labeled with "ALAN WIRE" and "12 AWG (UL) F9098".

A cable entry point at the bottom of the panel. Two wires, one red and one black, are passing through a grey plastic cable gland. The gland is secured with a metal nut. The wires are labeled "E-TRAC, NO NO LIA DEL S.E.T.".

A metal mounting bracket with a screw, located at the bottom of the panel. It is used to secure components to the panel's surface.



WARNING
THIS SERVICE METER
IS ALSO SERVED BY A
PHOTOVOLTAIC SYSTEM

CONTAINS FCC ID: R1P6G1R158 CONTAINS IC: 5064 E01R154
Landis+Gyr **GRIDSTREAM RF**
90A401DE
MODULE MODEL: 90A401DE
Type **FOCUS AXRe-SD**
FORM 2S CL200 240V 3W 60Hz TA=30 Kh 7.2
CENTRAL EMC
161 766 468
934
0720
Landis+Gyr

WARNING
HAZARD OF ELECTRICAL
SHOCK OR BURN
DO NOT BREAK SEAL
CONTACT UTILITY
FOR SERVICE
DURHAM CO. LEASAKON, MD 11E K4808

OUTLET
HAMMER
USE BY ENCLOSURE

03
TERMINAL
080520

WARNING
DO NOT OPEN
THIS METER
UNLESS YOU ARE
A LICENSED
ELECTRICIAN
REPAIR SERVICE



ON OFF

BATTERY DISCONNECT

GENERAC

PWRCELL



RAIN-3-B

STOP WARNING: TURN BATTERY DISCONNECT OFF AND DE-ENERGIZE BEFORE TOUCHING TERMINALS

P. APT & LAMBERT
PRO-HIDE SILVER
INTERIOR FLAT PAINT

P. APT & LAMBERT
PRO-HIDE SILVER
INTERIOR FLAT PAINT

GENERAC

120V

⚠ WARNING ⚠
DUAL POWER SUPPLY
SOURCES: UTILITY GRID AND
PV SOLAR ELECTRIC SYSTEM



