







**WARNING**  
DUAL POWER SUPPLY  
SOURCES: UTILITY GRID  
AND PV SOLAR  
ELECTRIC SYSTEM

**WARNING**  
ELECTRICAL SHOCK HAZARD  
TERMINALS ON THE LINE AND  
LOAD SIDES MAY BE ENERGIZED  
IN THE OPEN POSITION

solar **edge**

**HD** wave

**PHOTOVOLTAIC  
DC DISCONNECT**

ON  
OFF



solar **edge**



2. La empresa se compromete a reparar o a cambiar el producto defectuoso así como las piezas y componentes del mismo cuando y a cubrir los gastos de transporte terrestre que sobrevengan del cumplimiento de la presente garantía.  
3. Las reclamaciones se podrán presentar directamente durante el tiempo que transcurre al producto.  
4. La garantía no cubre los daños ocasionados por uso indebido, negligencia o fuerza mayor.  
5. La garantía no cubre los daños ocasionados por uso indebido, negligencia o fuerza mayor.





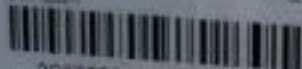
203722362557402576

We aim for a greener tomorrow with completely clean energy solutions

**Q-PEAK DUO BLK ML-G10+ 400****PERFORMANCE AT STANDARD TEST CONDITIONS\***

Nominal Power* (P <sub>max</sub> )	P <sub>max</sub>	[W]	400
Short circuit current*	I <sub>sc</sub>	[A]	11.14
Open circuit voltage*	V <sub>oc</sub>	[V]	45.30
Current at maximum power	I <sub>mp</sub>	[A]	10.77
Voltage at maximum power	V <sub>mp</sub>	[V]	37.13
Maximum system voltage	V <sub>sys</sub>	[V]	1000(IEC) 1000(UL)
Weight	M	[kg / lbs]	22.0 / 48.5

\* Measurement tolerances: P<sub>max</sub> ± 3%, I<sub>sc</sub>, V<sub>oc</sub> ± 2% at STC: 1000W/m<sup>2</sup>, 25 ± 2 °C, AM 1.5 according to IEC 60904-1. Data given are rated (nominal) values.  
IEC 61215:2016, IEC 61730:2016.

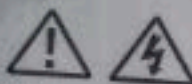


203722362557402576

Maxima Q CELLS USA INC.  
500 Texas Drive, Dallas TX 75212, USA

**Qcells**

Assembled in USA

**DANGER!**

**Risk of electric shock!**  
DO NOT connect or disconnect plug contacts while system is under load current. Refer to the Installation and Operation Manual before installing, operating or servicing this unit.

**DANGER!**

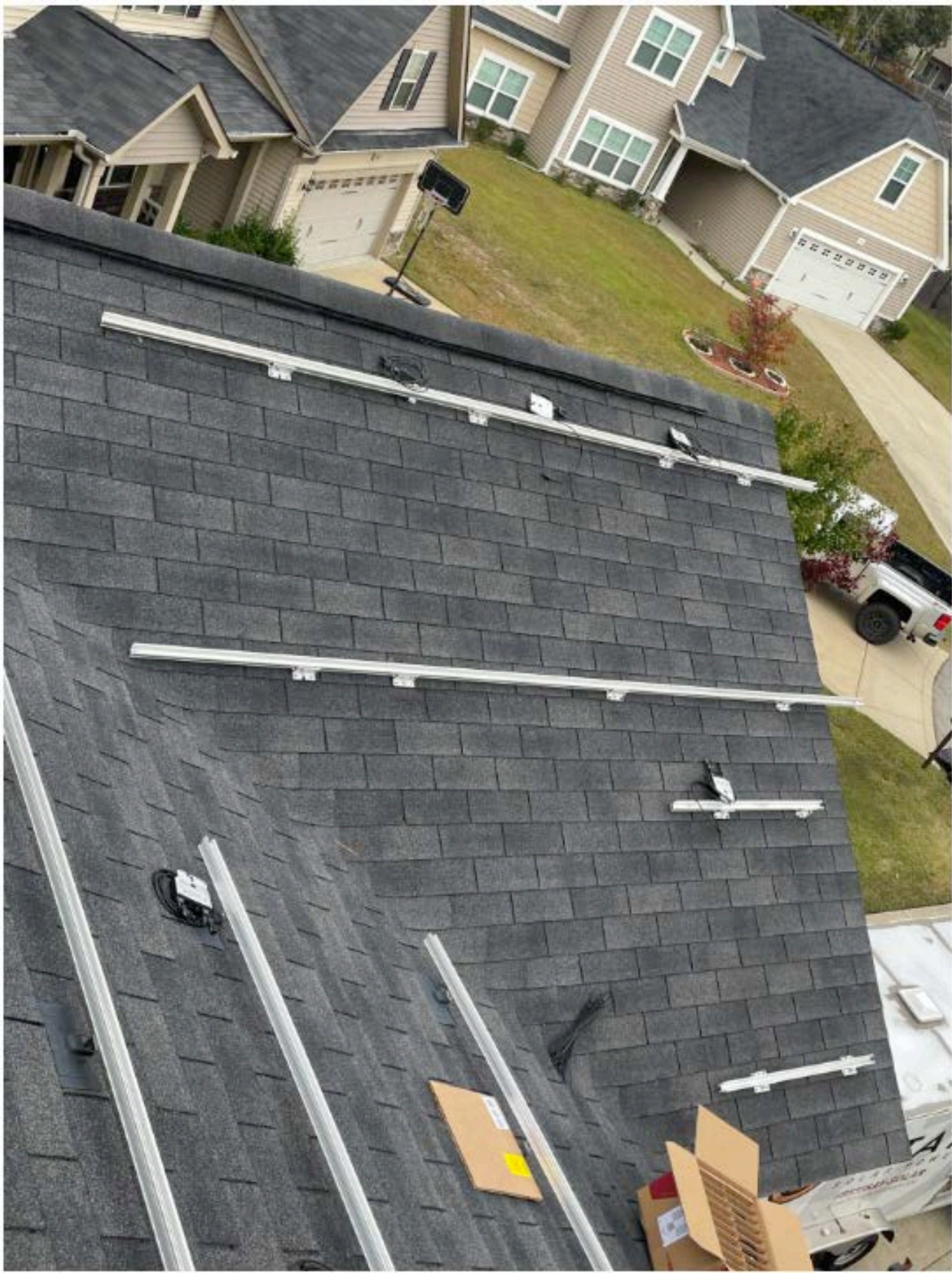
**Risque de choc électrique!**  
NE PAS connecter ou déconnecter les connecteurs lorsque le système est en charge. Consultez le manuel d'installation et d'utilisation avant installation, utilisation et entretien du produit.

Fire Rating: Class C / Type 2  
Fuse Rating: 20A

U.S. Patent No. 8,852,315  
(Solar cell)

EMAIL: [service@q-cells.com](mailto:service@q-cells.com)  
WEB: [www.q-cells.com](http://www.q-cells.com)







WARNING - PHOTOVOLTAIC  
POWER SOURCE

**⚠ WARNING**  
DUAL POWER SUPPLY  
SOURCES: UTILITY GRID  
AND PV SOLAR  
ELECTRIC SYSTEM

**⚠ WARNING**  
ELECTRICAL SHOCK HAZARD  
TERMINALS ON THE LINE AND  
LEADS SHOULD NOT BE ENERGIZED  
IN THE OPEN POSITION

solar **edge**

**HD** wave



**LISTED**

UL Mounting System

5467724

Everest Solar Systems, LLC

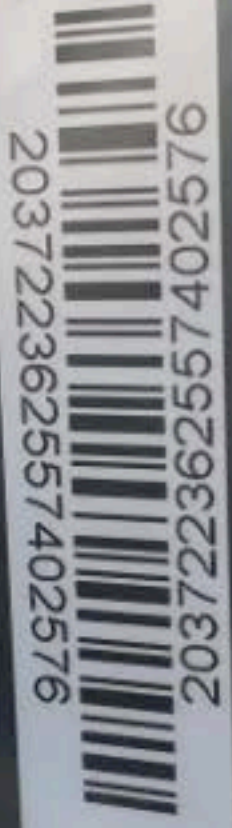
RailConn CR 44-X, Struct. Set. Mill

OCD Protection Rating 30 AMP

Conforms to ANSI/UL 2703

05/31/22





203722362557402576  
203722362557402576

**EATON**

General Duty Safety Switch  
interrupteur de sécurité à usage général  
interruptor de seguridad de servicio general

60A, 240V, 1-20 Hz

Complete voltage switch  
Interrupteur à tension complète à 1 et 2 pôles  
Interruptor a tensión completa de 1 o 2 polos

Further instructions inside  
Autres instructions à l'intérieur  
Instrucciones adicionales en el interior

Made in E.C.A. (Mexico) and E.C.A. (Mexico or E.C.A.)



**⚠ DANGER**  
This switch is designed to protect  
equipment and personnel from  
overcurrent and short circuit  
conditions. It is not intended  
for use as a circuit breaker.  
Do not use for applications  
other than those specified.  
See instructions for proper  
use and installation.  
See instructions for proper  
use and installation.

**⚠ PELIGRO**  
Este interruptor está diseñado  
para proteger el equipo y al  
personal de sobrecorrientes  
y condiciones de cortocircuito.  
No está diseñado para ser  
utilizado como un  
disyuntor. No lo use para  
aplicaciones que no estén  
especificadas. Consulte las  
instrucciones para el uso  
correcto e instalación.

MAXIMUM VOLTAGE \_\_\_\_\_  
MAXIMUM CIRCUIT CURRENT \_\_\_\_\_  
MAX RATED OUTPUT CURRENT OF  
THE CHARGE CONTROLLER  
OR DC-TO-DC CONVERTER  
IF INSTALLED \_\_\_\_\_

**MAIN PHOTOVOLTAIC  
SYSTEM  
AC DISCONNECT**



OFF

DN  
1





156804C1-45



Do Not Remove 156804C1-45



SolarEdge Technologies GmbH  
Werner-Eichen-Strasse 6/10125 Munich/Germany



### CAUTION

HOT SURFACES-TO REDUCE THE RISK OF BURNS-DO NOT TOUCH. RISK OF ELECTRIC SHOCK-WHEN THE PHOTOVOLTAIC ARRAY IS EXPOSED TO LIGHT, IT SUPPLIES A DC VOLTAGE TO EQUIPMENT. COVER PV MODULE WITH OPAQUE MATERIAL BEFORE CONNECTING OR DISCONNECTING THIS OPTIMIZER. DURING FAULT, ZERO CURRENT IS SOURCED INTO DC ARRAY BY CONVERTER.



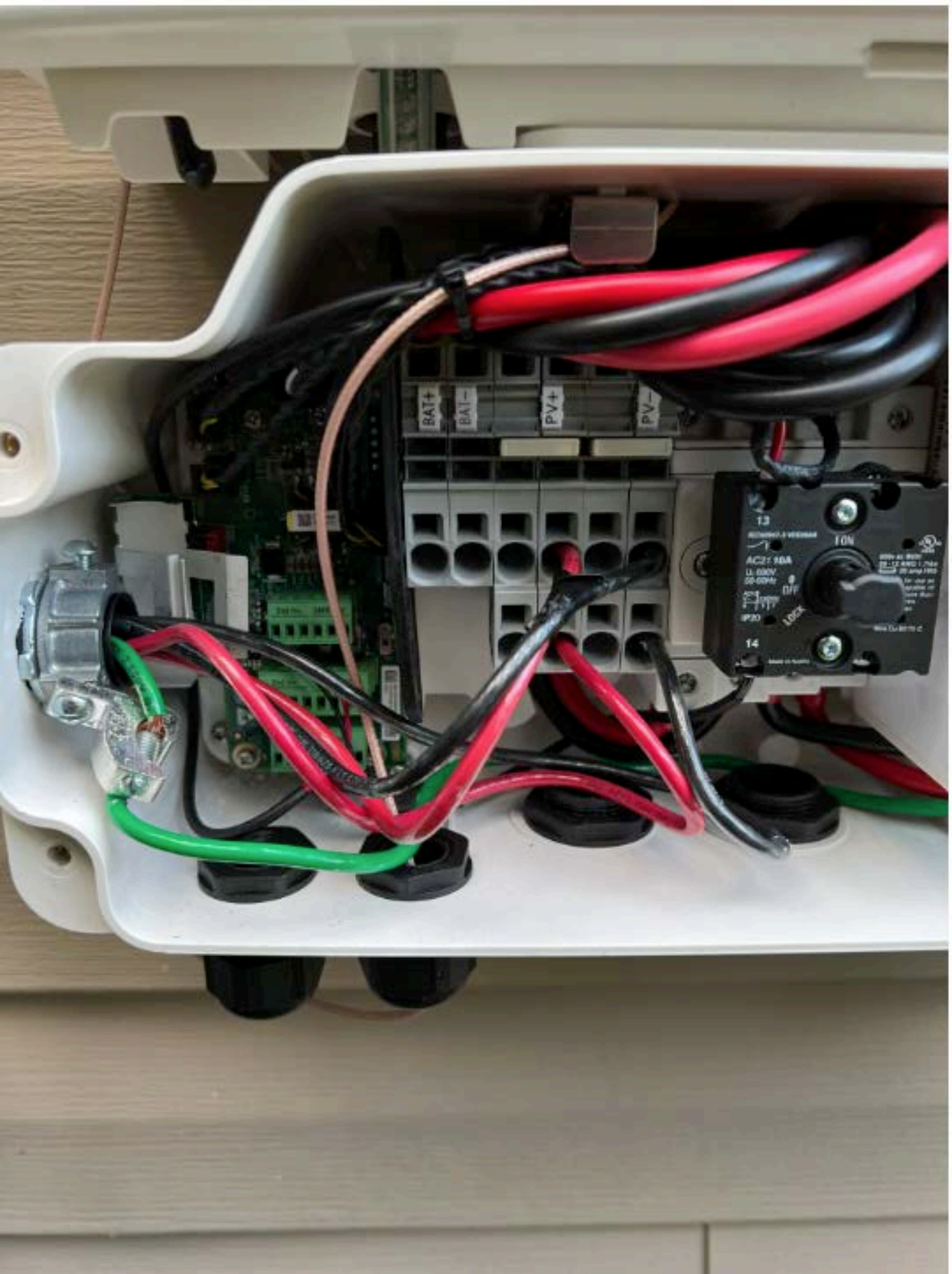
**WARNING** ELECTRIC SHOCK HAZARD. THE DC CONDUCTORS OF THIS PHOTOVOLTAIC SYSTEM ARE UNGROUNDED AND MAY BE ENERGIZED.

### AVERTISSEMENT

RISQUE DE CHOC ELECTRIQUE: QUAND LE CHAMP PHOTOVOLTAIQUE EST EXPOSE A LA LUMIERE, UNE TENSION CC EST FOURNIE A CET EQUIPEMENT. SURFACES CHAUDES: NE PAS TOUCHER, AFIN DE REDUIRE LES RISQUES DE BRULURES LE COURANT DE RETOUR INJECTE PAR LE CONVERTISSEUR EN CAS DE DEFAILLANCE DANS LE MODULE PV EST TOUJOURS NUL.



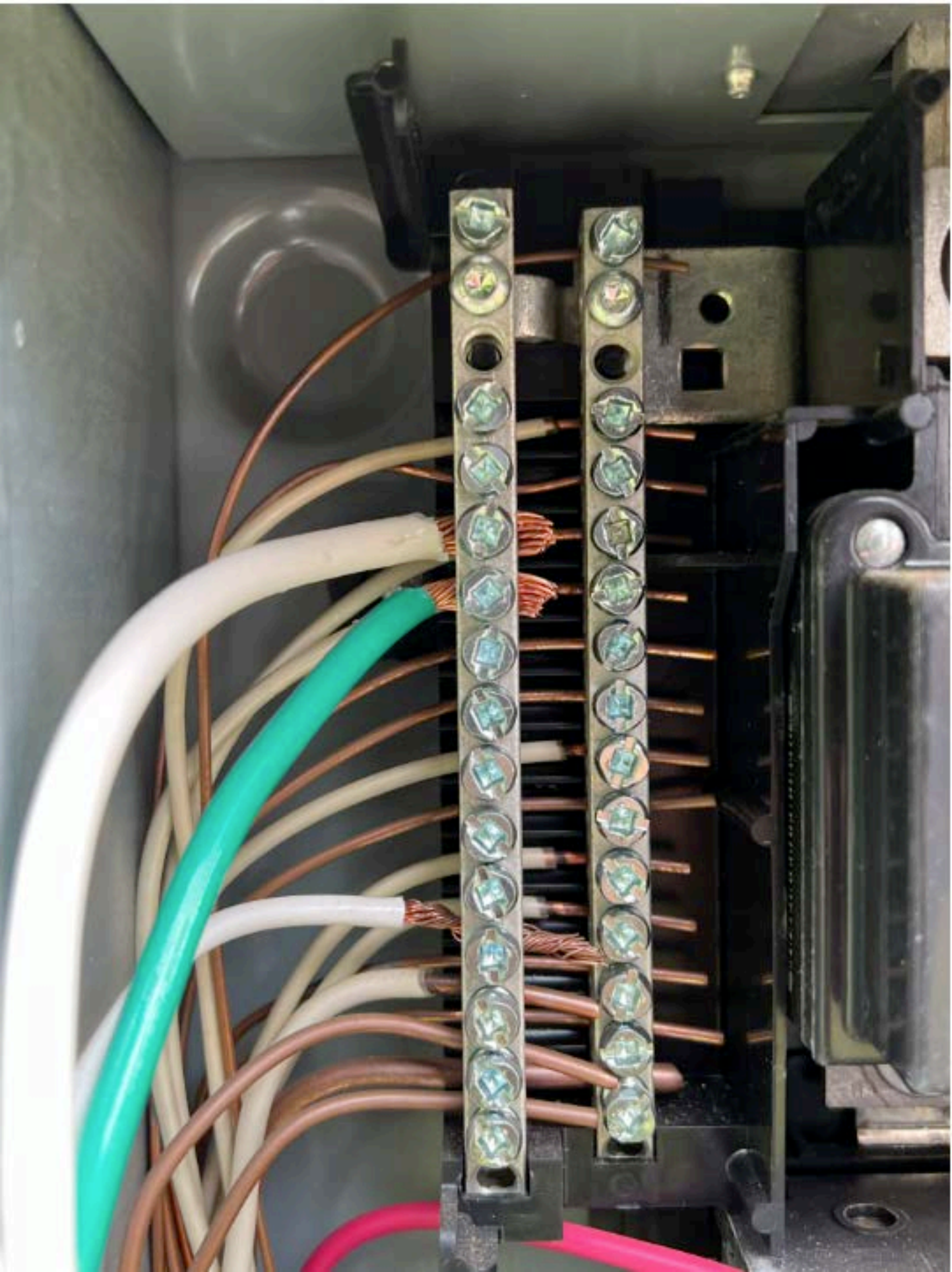














**EATON**

General Safety Notice  
Interception de secours à usage général  
Interception de secours de secours généraux

NEA, 240 V, 50 Hz

Consultez les notices  
Veuillez consulter les notices à l'installation  
Informazioni complete di installazione sul  
manuale

Further instructions inside  
Autres instructions à l'intérieur  
Instrucciones adicionales en el interior

Made in U.S.A. (Product and U.S.A. Parts and U.S.A.)



**⚠ DANGER**  
SEE THE WARNING LABELS  
FOR THE PROPER  
INSTALLATION AND  
OPERATION OF THIS  
EQUIPMENT.  
**⚠ PELIGRO**  
VÉASE LAS ETIQUETAS DE  
ADVERTENCIA PARA  
LA INSTALACIÓN Y  
OPERACIÓN DE ESTE  
EQUIPO.



MAXIMUM VOLTAGE \_\_\_\_\_

MAXIMUM CIRCUIT CURRENT \_\_\_\_\_

MAX RATED OUTPUT CURRENT OF  
THE CHARGE CONTROLLER  
OR DC-TO-DC CONVERTER  
(IF INSTALLED) \_\_\_\_\_

**MAIN PHOTOVOLTAIC  
SYSTEM  
AC DISCONNECT**

ON  
I

OFF  
O



**⚠ WARNING**  
PV SOURCE CIRCUIT

**⚠ WARNING**  
THIS EQUIPMENT FED BY  
MULTIPLE SOURCES:  
TOTAL RATING OF ALL OVERCURRENT  
DEVICES EXCLUDING MAIN POWER  
SUPPLY SHALL NOT EXCEED  
AMPACITY OF BUSBAR

**CAUTION: DO NOT INSTALL  
ADDITIONAL LOADS IN THIS PANEL**

MAXIMUM VOLTAGE \_\_\_\_\_  
MAXIMUM CIRCUIT CURRENT \_\_\_\_\_  
MAX RATED OUTPUT CURRENT OF  
THE CHARGE CONTROLLER  
OR DC-TO-DC CONVERTER  
(IF INSTALLED) \_\_\_\_\_

**SOLAR PV SYSTEM EQUIPPED  
WITH RAPID SHUTDOWN**

TURN RAPID SHUTDOWN  
SWITCH TO THE  
"OFF" POSITION TO  
SHUT DOWN PV SYSTEM  
AND REDUCE  
SHOCK HAZARD  
IN THE ARRAY



**PHOTOVOLTAIC SYSTEM  
EQUIPPED WITH  
RAPID SHUTDOWN**

↓ RELEASE LATCH,  
MOVE DOOR DOWN  
OPEN DOOR

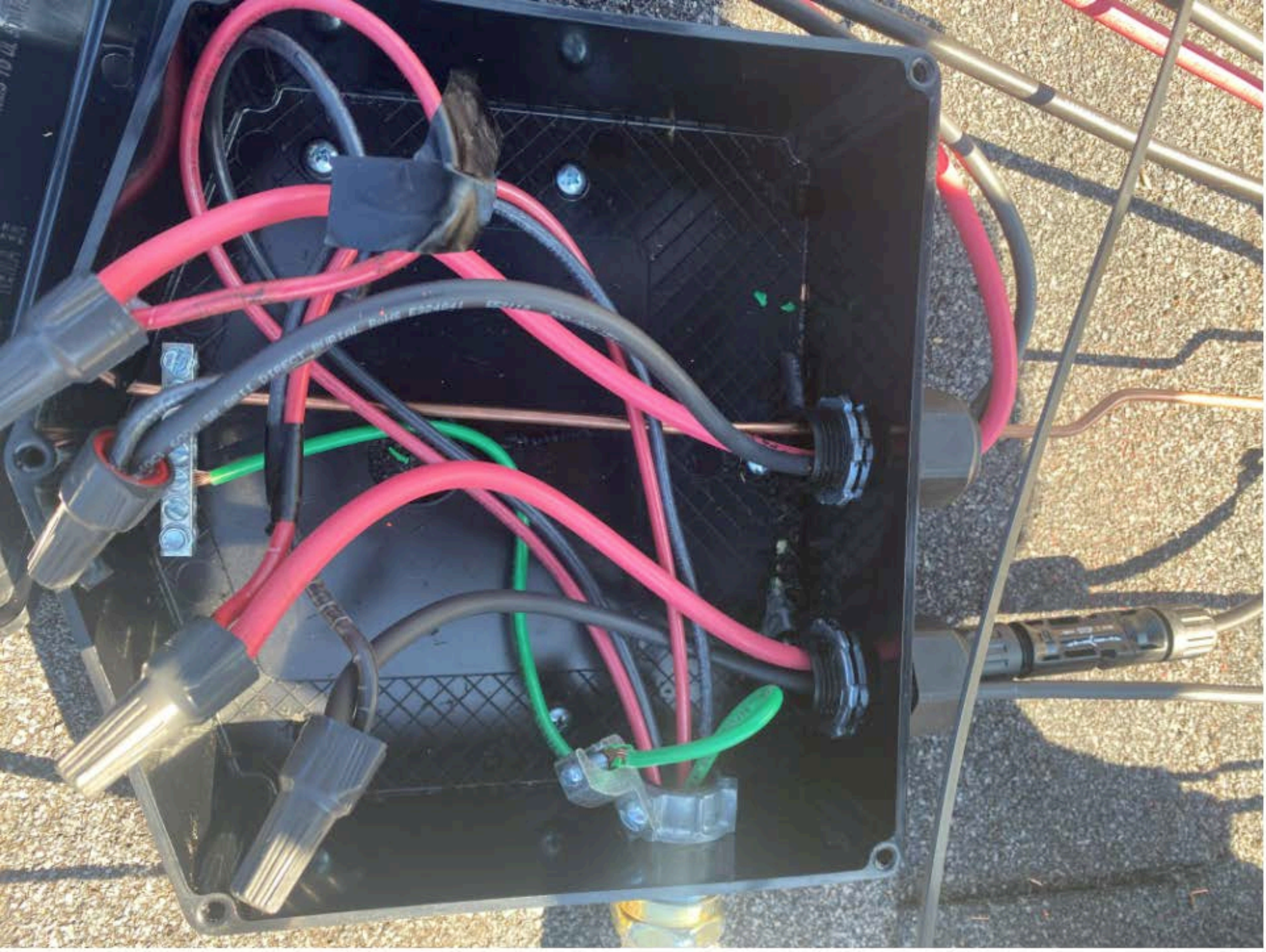
↑ CLOSE DOOR,  
LIFT DOOR UP  
ENGAGE LATCH

**RAPID SHUTDOWN SWITCH  
FOR SOLAR PV SYSTEM**



















solarEdge SE7600H - US  
Grid Support Utility Interactive  
Non-Isolated Photovoltaic Inverter

Operating Voltage Range 270 - 480V<sub>AC</sub>  
Max Input Current 25A<sub>AC</sub>  
Max Continuous Output Power 7600W<sub>AC</sub>  
Voltage Min - Nom - Max 277 - 240 - 264V<sub>AC</sub>  
Max Continuous Output Current 30A<sub>AC</sub>  
Max Output Feed Current 75A<sub>AC</sub>  
Max Utility Backfeed Current 30A<sub>AC</sub>  
Frequency Min - Nom - Max 49.5 - 60.5 - 61.5 Hz  
Output Power Factor 0.9 - 1.0  
Max Ambient Temperature 50 °C  
Enclosure NEMA 1 Type 3W  
With integrated ground fault protection per NEC 690.15 (C)  
Type 1 Photovoltaic (PV) - Feed Circuit - Inverter

Wi-Fi Password: 42EJb12D  
Activation: 11aW 9Ac MGyq Y08r WaY ex48 HNF -

WiFi MAC:  
2E:D3:7C:1E:4E:05  
ZigBee MAC:



PN: SE7600H - US0NBB1.14  
SN: 5J4121 - 074052389 - 55

solarEdge  
PHOTOVOLTAIC RAPID  
SHUTDOWN SYSTEM

solarEdge  
PHOTOVOLTAIC RAPID  
SHUTDOWN SYSTEM  
74052389-55






**CAUTION**  
INVERTER OUTPUT CIRCUIT

MAXIMUM VOLTAGE \_\_\_\_\_  
MAXIMUM CIRCUIT CURRENT \_\_\_\_\_  
MAX RATED OUTPUT CURRENT OF  
THE CHARGE CONTROLLER  
OR DC-TO-DC CONVERTER  
(IF INSTALLED) \_\_\_\_\_

**SOLAR PV SYSTEM EQUIPPED  
WITH RAPID SHUTDOWN**

TURN RAPID SHUTDOWN  
SWITCH TO THE  
"OFF" POSITION TO  
SHUT DOWN PV SYSTEM  
AND REDUCE  
SHOCK HAZARD  
IN THE ARRAY



**WARNING**  
DUAL POWER SUPPLY  
SOURCES: UTILITY GRID  
AND PV SOLAR  
ELECTRIC SYSTEM

**WARNING**  
ELECTRICAL SHOCK HAZARD  
TERMINALS ON THE LINE AND  
LOAD SIDES MAY BE ENERGIZED  
IN THE OPEN POSITION

**solar edge** **HD wave**

**PHOTOVOLTAIC  
DC DISCONNECT**

ON



**solar edge**







A black, diamond-shaped junction box is mounted on a dark grey asphalt roof. The box is secured with four blue screws. A red warning label is affixed to the front of the box. Several wires are connected to the box: a white PVC pipe with a yellow and blue fitting on the left; a black cable with a grey connector at the top; a black cable with a grey connector at the bottom; and two red cables on the right side. A copper wire is also visible on the left side of the box.

**WARNING: PHOTOVOLTAIC  
POWER SOURCE**

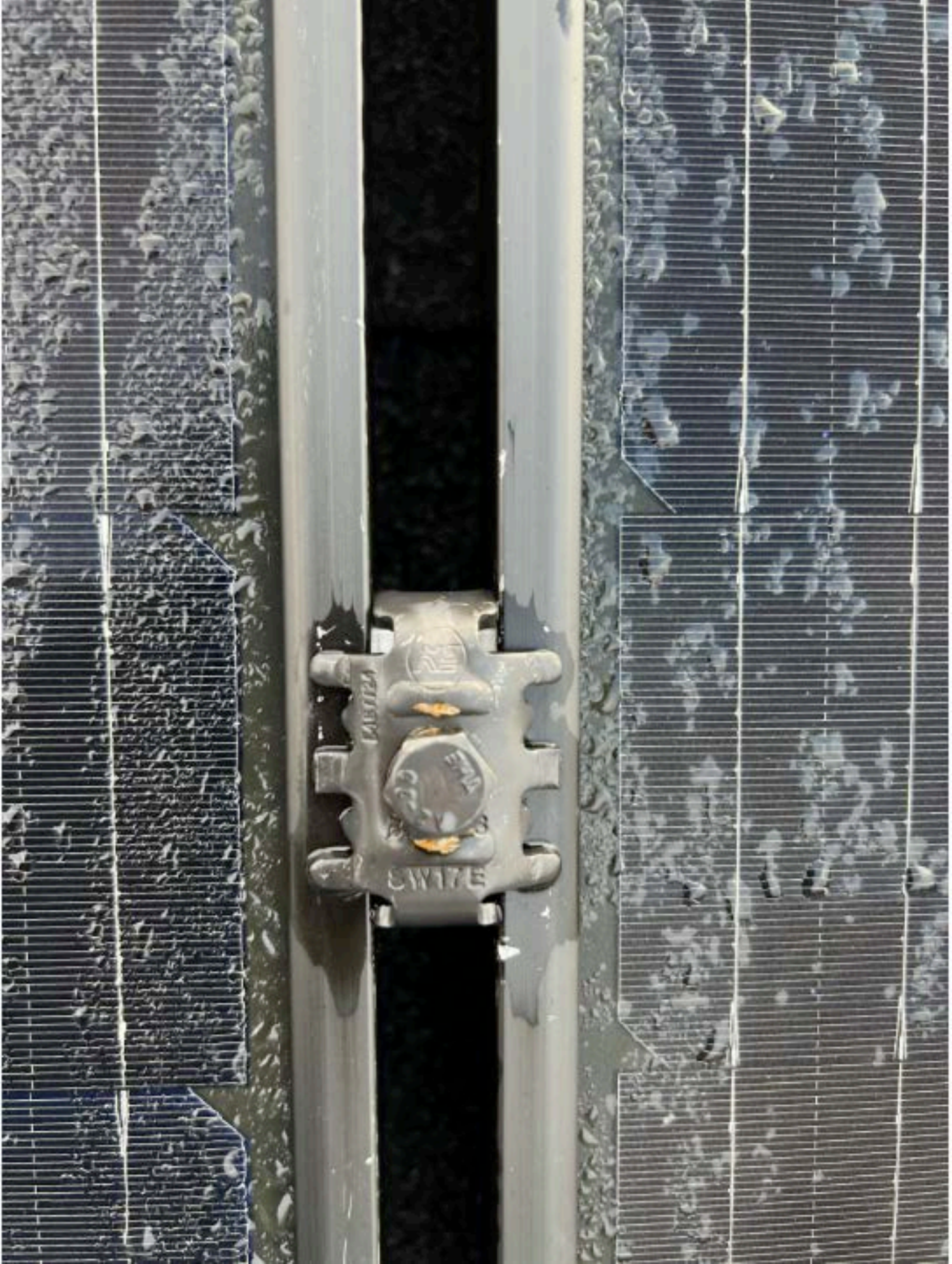








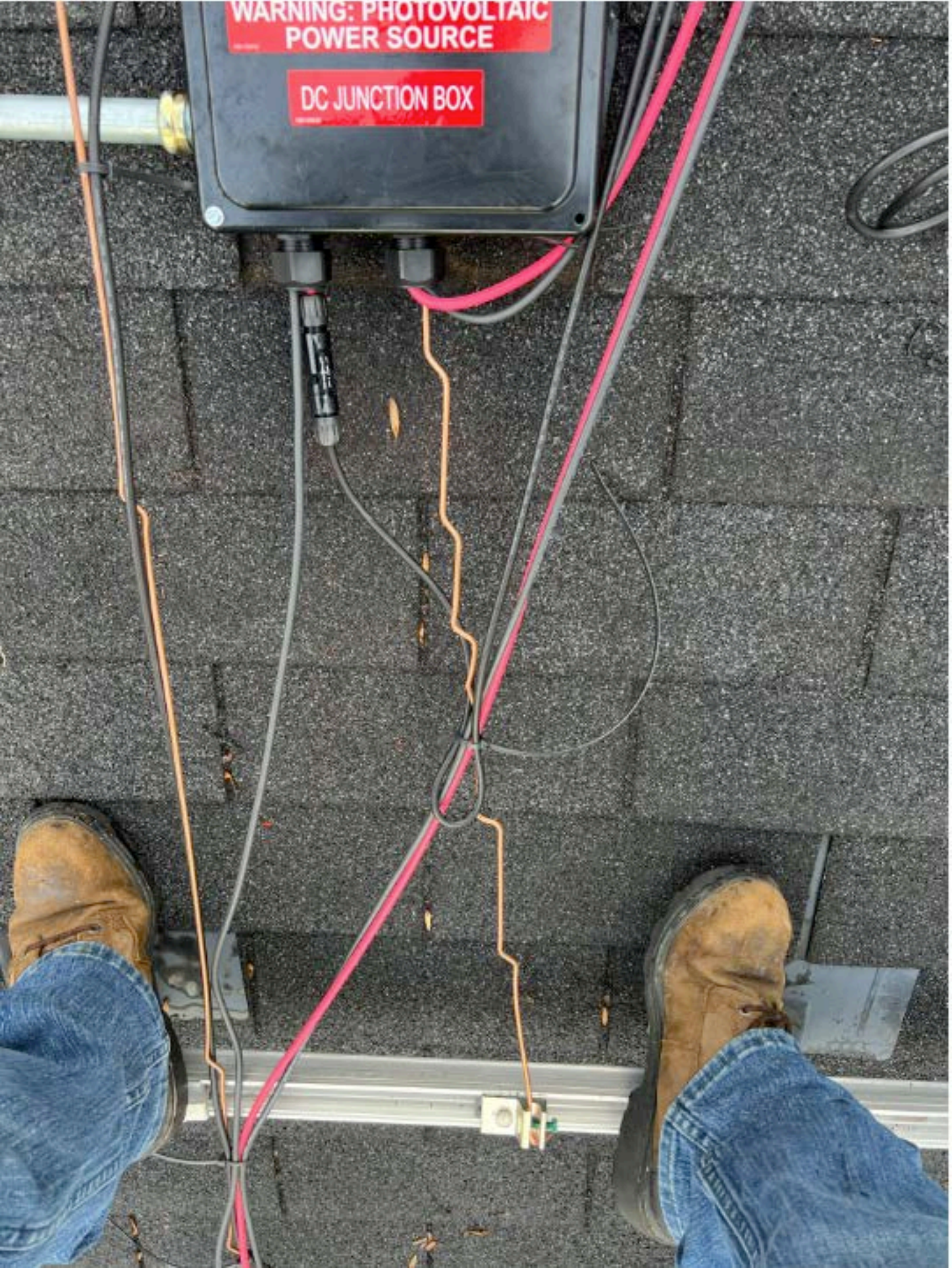




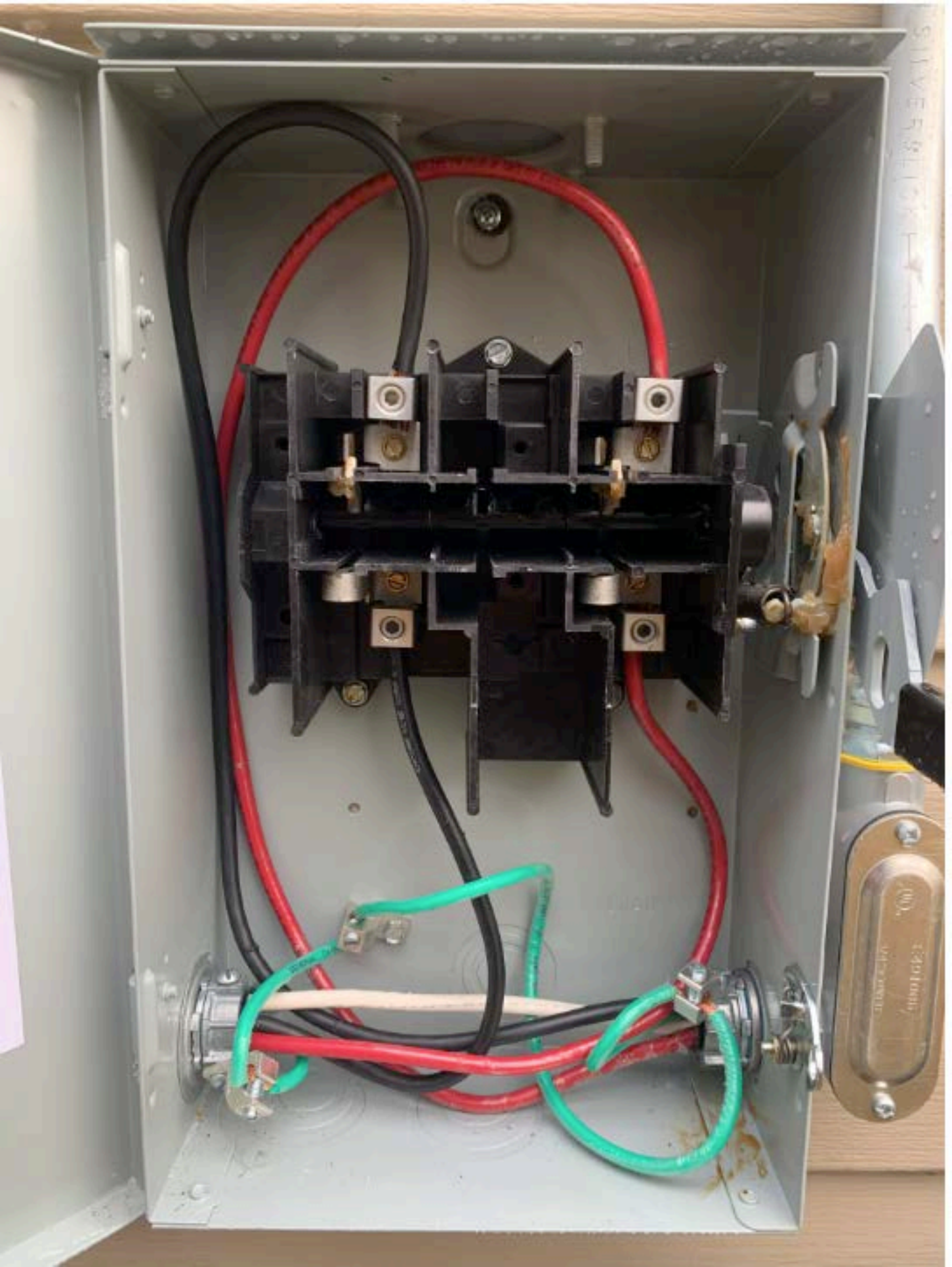


WARNING: PHOTOVOLTAIC  
POWER SOURCE

DC JUNCTION BOX









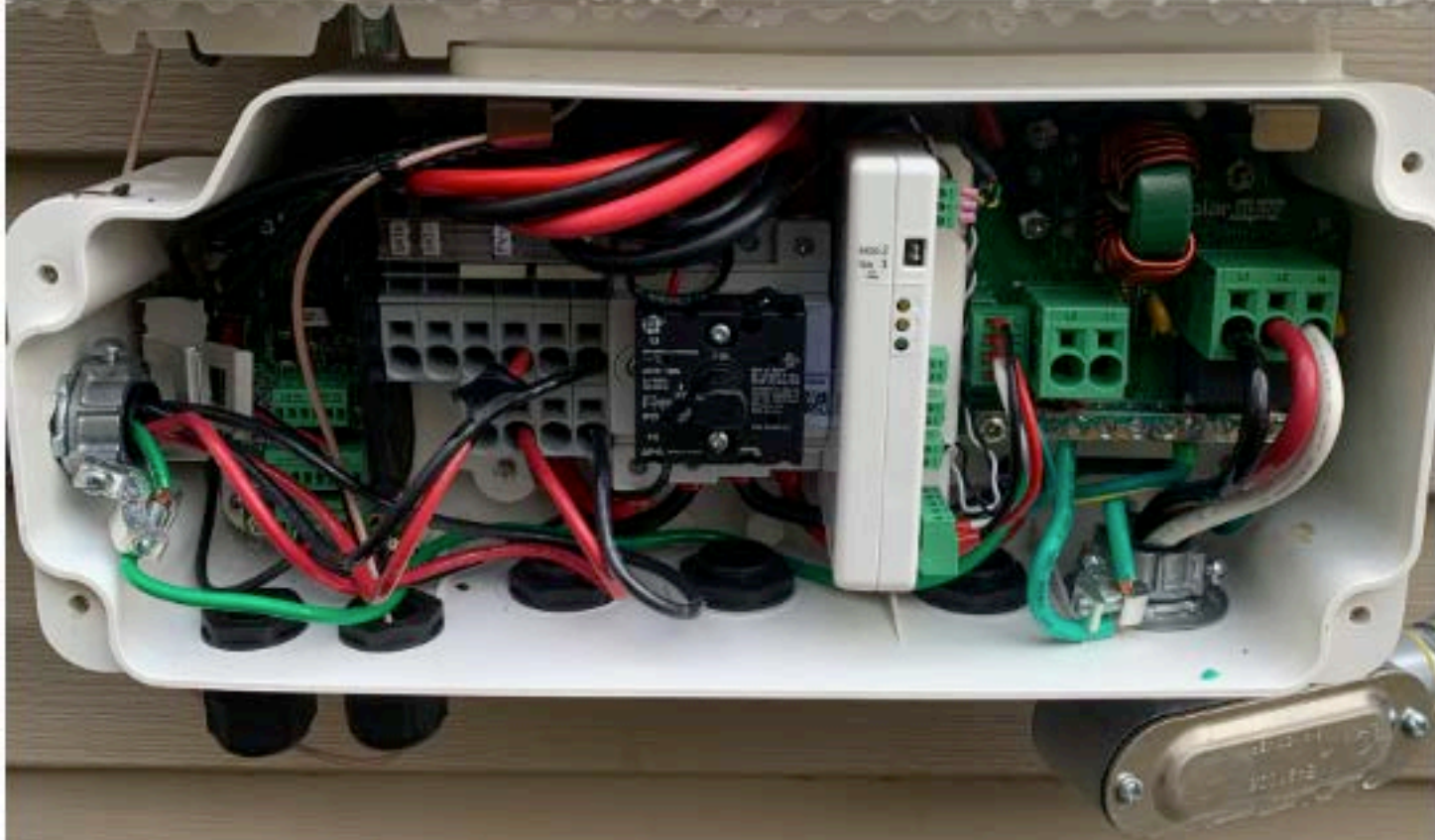
SHOCK HAZARD  
IN THE ARRAY

**WARNING**  
DUAL POWER SUPPLY  
SOURCES: UTILITY GRID  
AND PV SOLAR  
ELECTRIC SYSTEM

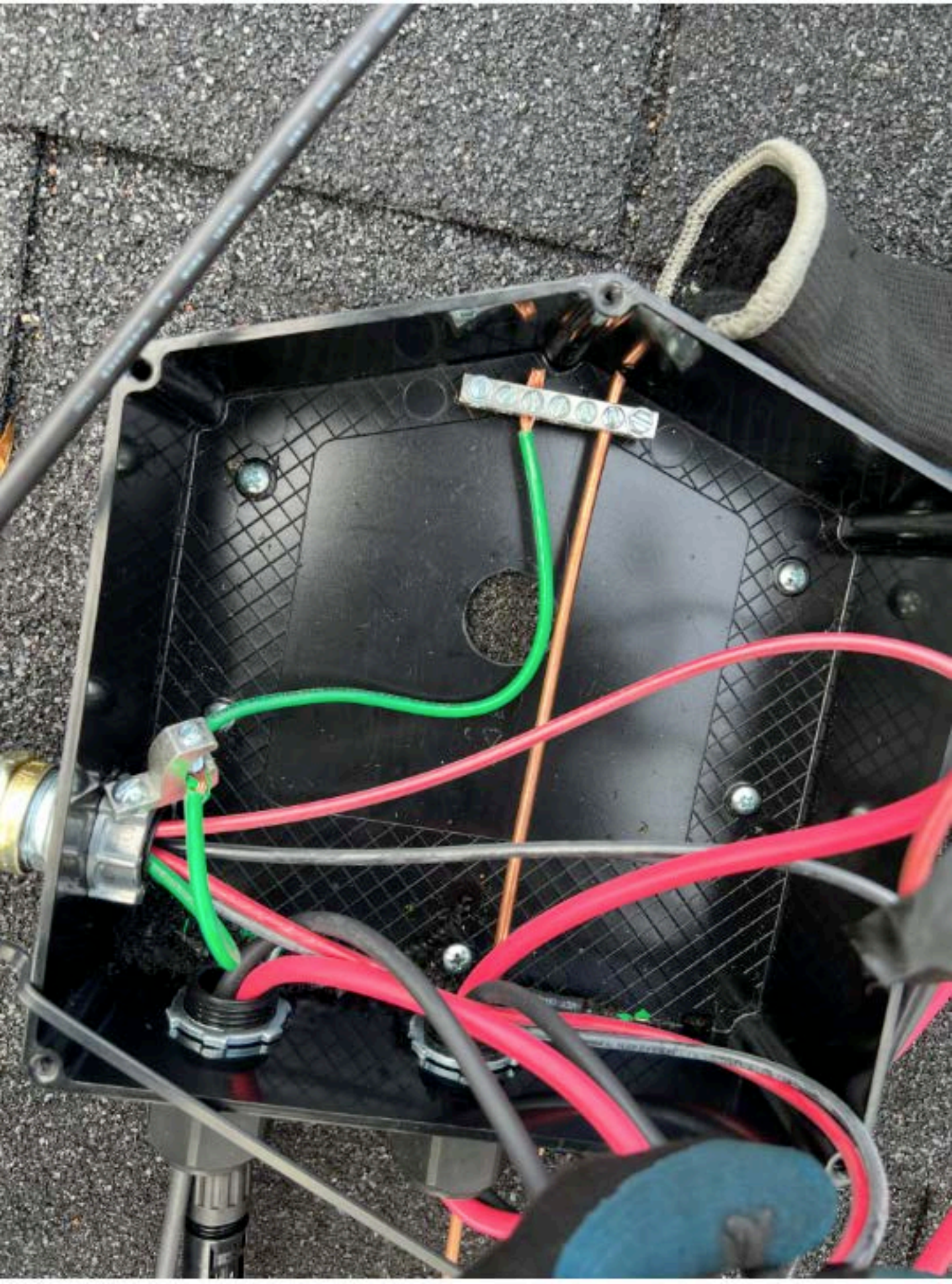
**WARNING**  
**ELECTRICAL SHOCK HAZARD**  
TERMINALS ON THE LINE AND  
LOAD SIDES MAY BE ENERGIZED  
IN THE OPEN POSITION

solar **edge**

**HD** wave









SERVICE DISCONNECT  
DESCONECTAR DE ACOMETIDA



1  
3  
7  
9  
11  
12  
15  
17  
19  
21

**⚠ WARNING**  
Always disconnect power before working on electrical equipment. Do not re-energize the system until it is safe to do so.

**⚠ CAUTION**  
High voltage electrical circuit is located here.

**⚠ DANGER**  
High Voltage  
Electrical Shock Hazard  
Do not touch live parts.  
Always use proper safety procedures.  
See the instructions for more information.

Call your local utility company for more information.  
If you are unsure of any of the information on this label, please contact your local utility company.  
Model: 1000-1000-1000





