
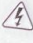

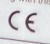


www.SOLARIA.com

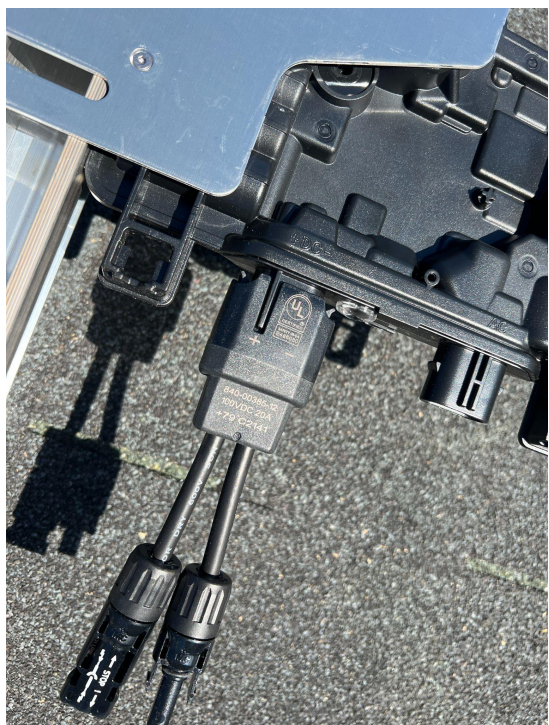
PowerX-400R

Peak Power	(Pmax)	400 W
Power Range		-0 / +5 W
Voltage at Pmax	(Vmp)	31.17 V
Current at Pmax	(Imp)	12.84 A
Open Circuit Voltage	(Voc)	37.20 V
Short Circuit Current	(Isc)	13.68 A
Maximum Series Fuse		30 A

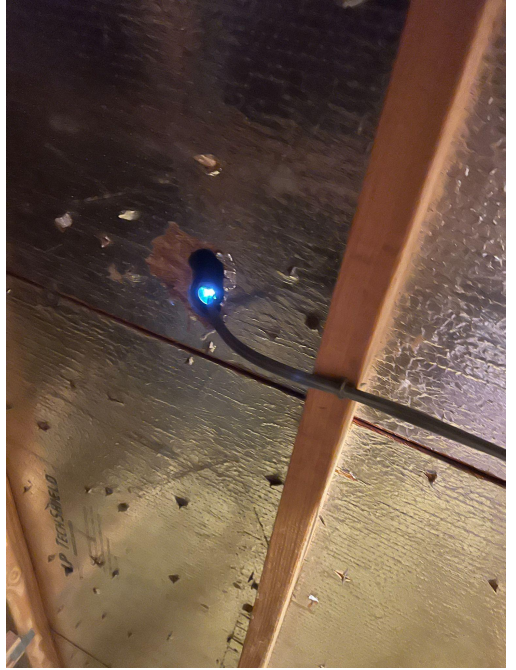
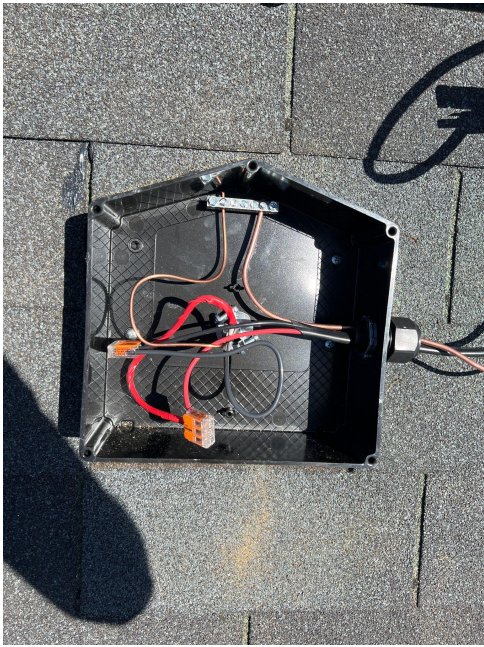
All ratings at standard test conditions: 1000 W/m², AM 1.5 spectrum, 25°C.
Field connections: use min. 12 AWG copper wires insulated for 90°C min.

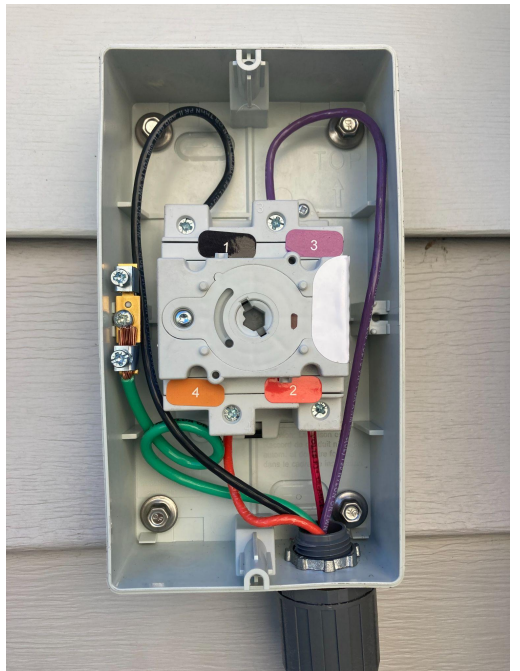
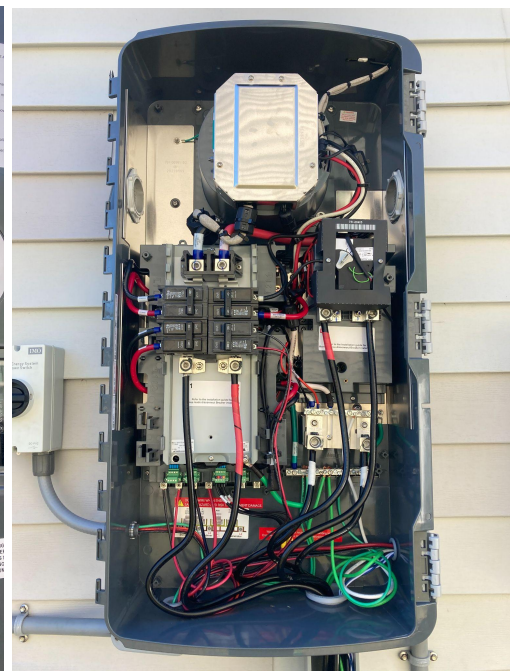
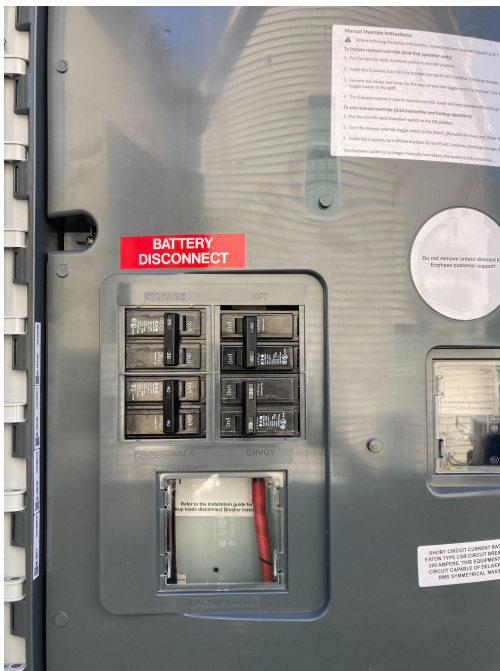
 C US 603544	Power Measurement Tolerances: ±3% Open Circuit Voltage Tolerance: ±3% Short Circuit Current Tolerance: ±3%
 WARNING Caution Risk of electric shock.	IEC Fire Rating Class C – UL Type 2 Application Class II See Installation Manual for Installation Requirements to Achieve a Specified System Fire Class Rating with this Product.
 AVERTISSEMENT Danger Risques d'électrocution.	

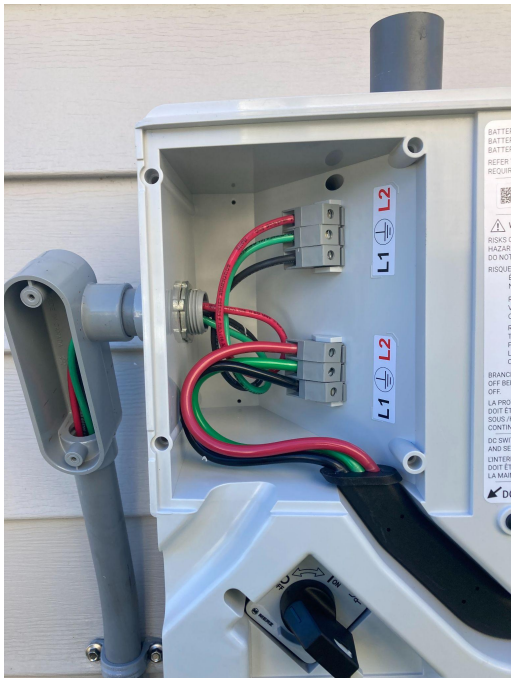
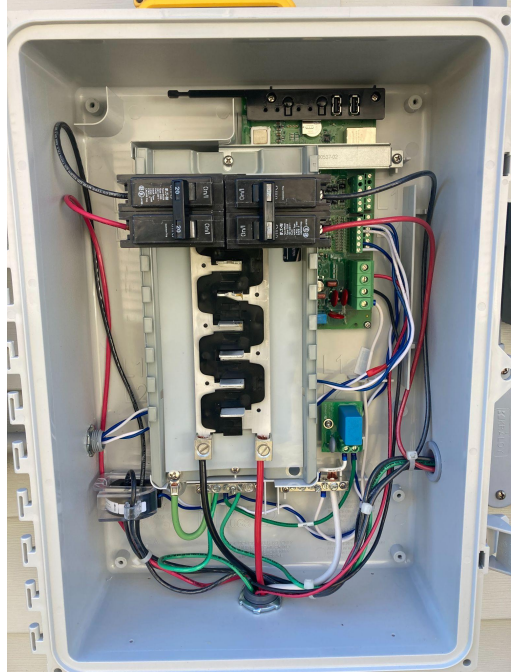
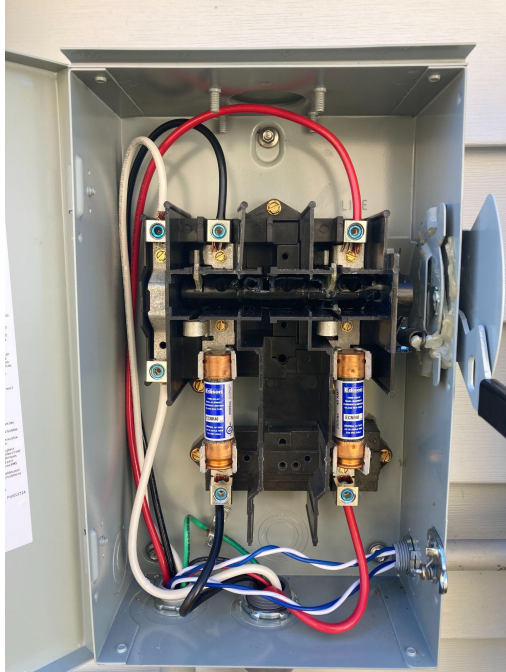
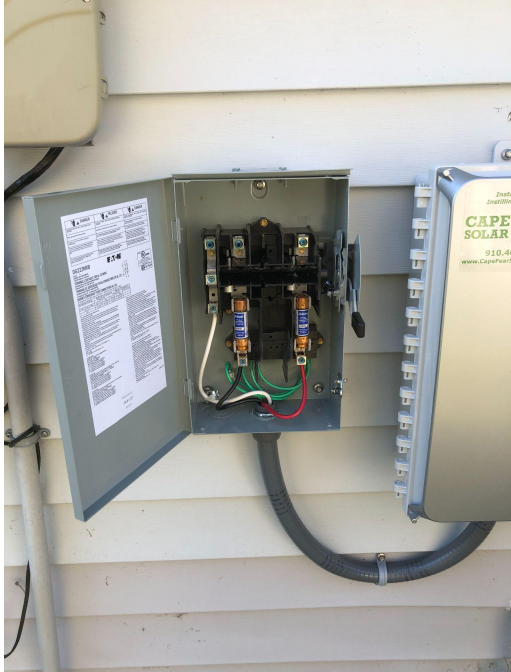
Maximum Permissible System Voltage 1000V DC
Made in Thailand
PXT-LBL-0008-01











BATTERY TYPE: LiFePO4
BATTERY CAPACITY: 3.2
BATTERY NOMINAL VOLTAGE: 51.2V
REFER TO HANDLING AND MAINTENANCE REQUIREMENTS IN PRODUCT MANUAL
ENCHARGE
R92-00226 26 6621

WARNING! ATTENTION!
RISKS OF ELECTRIC SHOCK, HAZARDOUS MATERIALS AND CHEMICALS. DO NOT DISASSEMBLE.
RISQUES D'ÉLECTROCUTION, D'ÉNERGIE ET DE PRODUIT CHIMIQUE. NE PAS DÉMONTÉER.

RISK OF ELECTRIC SHOCK. VOLTAGE IS PRESENT. OUTPUT WHEN DC SW IS ON.
RISQUE DE CHOC ÉLECTRIQUE. TENSION ALTERNATIVE PRÉSENTE À LA SORTIE LE COMMANDEUR DC. CONTINUË DC EST ACTIF.

BRANCH CIRCUIT PROTECTOR OFF BEFORE SWITCHING DC P. OFF
LA PROTECTION DU CIRCUIT DE BRANCHE DOIT ÊTRE DÉACTIVÉE AVANT SOUS INHORS TENSION DU COURANT CONTINU (DC)

DC SWITCH MUST BE OFF FOR SERVICE AND REPAIR.
L'INTERRUPTEUR DC (COURANT CONTINU) DOIT ÊTRE ÉTEINT POUR LEVÉES LA MAINTIENANCE.

DC DISCONNECT SWITCH

