































5146

5146

5146

5146

BUSINESS

- Always wear your safety glasses.
- Always follow all safety instructions and read all warnings pertaining with all Gateway
- Disconnect all conductors before any work is performed on the unit.
- Use only the correct wire size and type for the application.
- Use only the correct wire size and type for the application.
- Use only the correct wire size and type for the application.

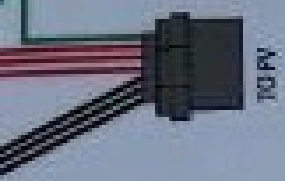


Device with battery

Do not use the device with any other equipment or program. Do not use the device with any other equipment or program.

NOTES

- Use only the correct wire size and type for the application.
- Use only the correct wire size and type for the application.



ENPHASE.

IQ Combiner 4

Photovoltaic
Combiner Box
X-IQ-AM1-240-4



Electrical ratings

- Voltage 240VAC, 60Hz
- DG Breaker 80A MAX (combined)
- DG Inputs 64A MAX (combined)
- Output 65A MAX, 65A MAX feeder OCPD
- Temperature 40°C MAX ambient
- For DG breaker, use only Eaton BR units.



P/N

Dedicated solar and DG Combiner Box - do not add loads
10 AMP or 15 AMP IQ-Gateway Breaker not used for backfeed

Connection	Wire Size	Torque
DG Breaker (1, 2, 3, 4)	14-10 AWG	2.2 Nm (20 lb-in)
	8 AWG	2.6 Nm (23 lb-in)
	6-4 AWG	3.0 Nm (27 lb-in)
60A Circuit Breaker only	4-1/0 AWG	5.0 Nm (45 lb-in)
IQ Gateway Breaker	14-10 AWG	2.26 Nm (20 lb-in)

Neutral and ground	Large screw	Small screw	Main lug
	14-10 AWG	6-14 AWG	10-4 AWG
			3-2/0 AWG
			5.0 Nm (45 lb-in)
			5.6 Nm (50 lb-in)

Copper conductors only, rated min. 75°C
Follow NFPA 70 (NEC), or CSA C22.1 part 1, and all local codes.

For DG Breakers larger than 30A, use wire insulated for 90°C
based on 75°C ampacity.

Designed in California and New Zealand
Made in Mexico

















ON

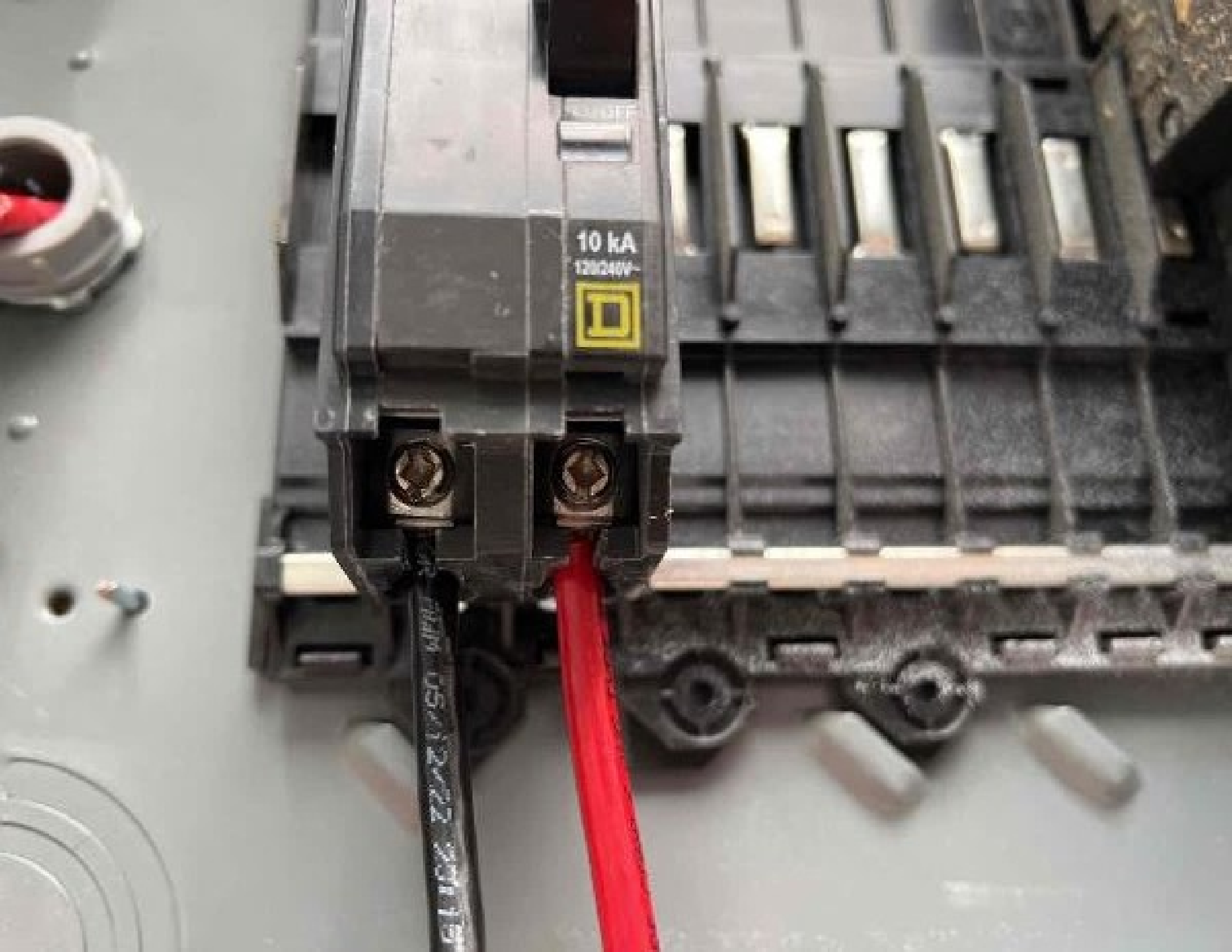
60

OFF

10 kA
120/240V



Hood



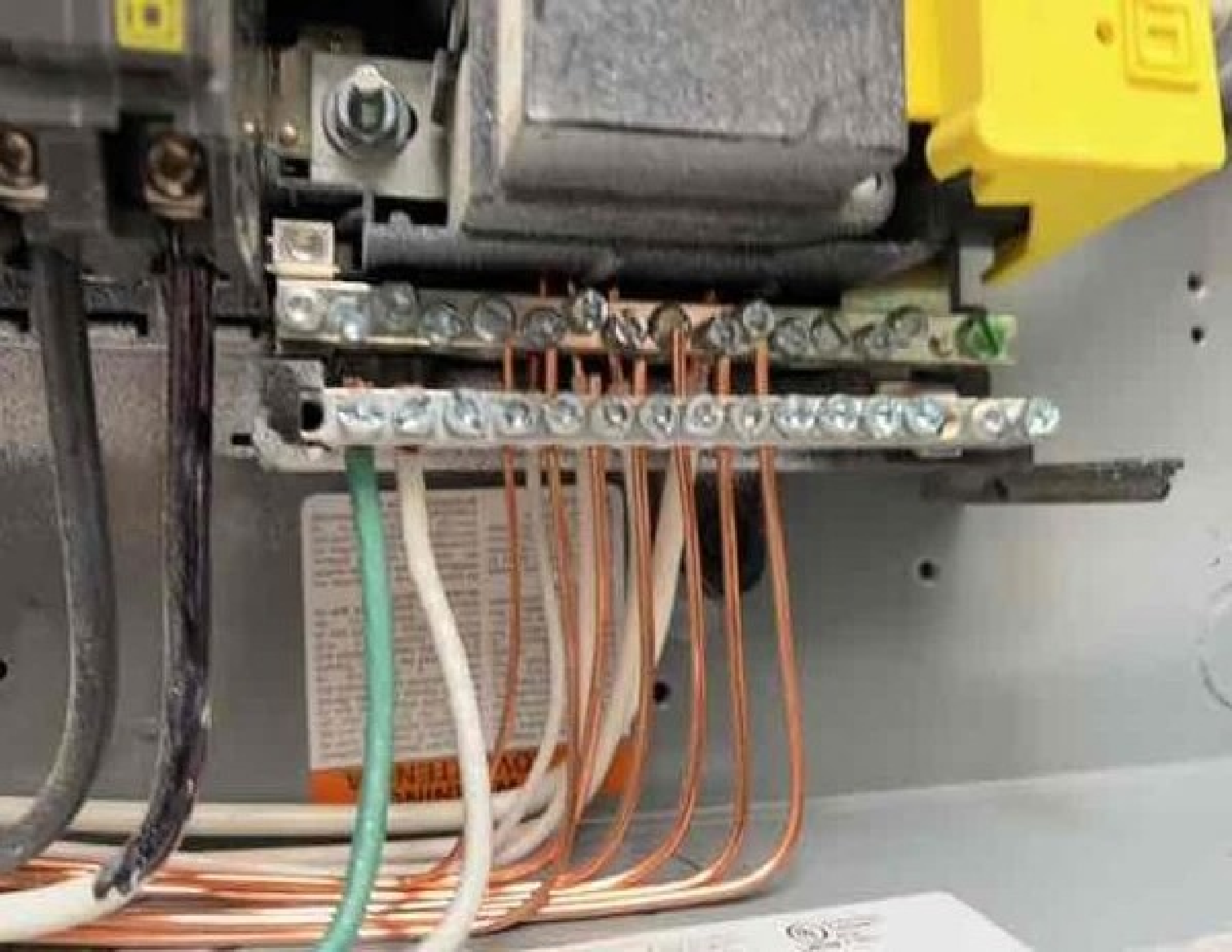
10 kA

120/240V



TRIP OFF

WDM US 12/22 20119





EQUIPMENT IDENTIFICATION LABEL

Terminal	Wire binding AND CUAL	Wire number	Terminal
		18-11-12-13-14	20
		25	25
		35	35
		45	45
		50	50
		5-20	200
		6-30	200
		1-40	200
			200

18-11-12-13-14
25
35
45
50
5-20
6-30
1-40
200





























SOLAR CIRCUIT







John Rank
July 11, 2011

PROPERTY NUMBER	PERSONAL MESSAGE	ADDRESS
1	HORNS / STRAP	
2	ROPES	
3	SHUT OFF	
4	WATER STRAPS	
5	Central Harneff	
6		
7		
8		
9		
10		
11		
12		
13		
14		
15		
16		
17		
18		
19		
20		
21		
22		
23		
24		
25		
26		
27		
28		
29		
30		
31		
32		
33		
34		
35		
36		
37		
38		
39		
40		
41		
42		
43		
44		
45		
46		
47		
48		
49		
50		
51		
52		
53		
54		
55		
56		
57		
58		
59		
60		
61		
62		
63		
64		
65		
66		
67		
68		
69		
70		
71		
72		
73		
74		
75		
76		
77		
78		
79		
80		
81		
82		
83		
84		
85		
86		
87		
88		
89		
90		
91		
92		
93		
94		
95		
96		
97		
98		
99		
100		

NATE HIGHTOWER N JH



**SOLAR PV SYSTEM EQUIPPED
WITH RAPID SHUTDOWN**

This panel supports
inverter for the
"RPS" function to
shutdown PV system
and report
back to the
inverter



WARNING
EQUIP POWER SUPPLY
SOURCE, UTILITY GRID
AND PV SOLAR
ELECTRIC SYSTEM

WARNING
EQUIP POWER SUPPLY
SOURCE, UTILITY GRID
AND PV SOLAR
ELECTRIC SYSTEM



WARNING
ELECTRICAL SHOCK HAZARD
DANGER TO THE LIFE AND
HEALTH OF THE USER AND
OTHER PEOPLE WHO DO NOT KNOW
THE RISK OF THE HAZARD

Handwritten notes and a printed document with the **Carlytics** logo. The document appears to be a technical specification or a safety manual, with the logo prominently displayed in the center.

WARNING
EQUIP POWER SUPPLY
SOURCE, UTILITY GRID
AND PV SOLAR
ELECTRIC SYSTEM

⚠ WARNING
Remove fuses without connection
to avoid fire hazard. They are located at the back.

SOLAR
FUSE TRIP

FUSE TRIP
FUSE TRIP
FUSE TRIP
FUSE TRIP
FUSE TRIP

FUSE TRIP
FUSE TRIP
FUSE TRIP

⚠ WARNING ADVERTENCIA AVERTISSEMENT



⚠ DANGER

CAUTION: SOLAR CIRCUIT

WARNING
SERVING ELECTRICAL CONTRACTORS
AND ELECTRICAL ENGINEERS
ONLY. PROHIBITED FOR ALL OTHERS.



GENERAL SAFETY
SAFETY INSTRUCTIONS
INTERDISCIPLINARY
REGULATIONS OF
ELECTRICITY TRAINING
INSTITUTE
100 P.O.
10000

⚠ DANGER / PELIGRO
To reduce the risk of injury, observe the following safety instructions:

1. Before working on any electrical equipment, ensure that the power is disconnected and locked out. Verify that the power is off using a voltage tester.

2. Do not touch live electrical components. If you must work on live equipment, use proper safety procedures and wear appropriate personal protective equipment (PPE).

3. Use the correct tools and equipment for the job. Do not use damaged or unsafe tools.

4. Keep your work area clean and free of clutter. Properly store tools and materials.

5. Do not drink alcohol or use drugs before or while working on electrical equipment.

6. If you are unsure of any procedure, stop work and consult a qualified supervisor or electrician.

7. Always follow the manufacturer's instructions for all electrical equipment.

8. Report any unsafe conditions or equipment to your supervisor immediately.

9. Do not work alone. Always have a second person present when working on electrical equipment.

10. Use proper ladder safety techniques. Do not overreach or climb on equipment.

11. Be aware of your surroundings, including overhead power lines and other workers.

12. Use caution when working in confined spaces or near moving parts of machinery.

13. Do not touch electrical equipment if you are wearing wet clothing or shoes.

14. Do not touch electrical equipment if you are wearing jewelry or loose clothing.

15. Do not touch electrical equipment if you are wearing gloves that are not rated for electrical work.

16. Do not touch electrical equipment if you are wearing a watch, bracelet, or ring.

17. Do not touch electrical equipment if you are wearing a necklace or chain.

18. Do not touch electrical equipment if you are wearing a belt buckle or other metal fasteners.

19. Do not touch electrical equipment if you are wearing a metal tool belt.

20. Do not touch electrical equipment if you are wearing a metal ladder.

**RAPID SHUTDOWN SWITCH
FOR SOLAR PV SYSTEM**

⚠ WARNING
POWER TO THE BUILDING IS ALSO
SUPPLIED FROM MAIN DISTRIBUTION
UTILITY DISCONNECT LOCKED

⚠ WARNING
ELECTRIC SHOCK HAZARD
TERMINALS ON THE LINE AND
LOAD SIDES MAY BE ENERGIZED
IN THE OPEN POSITION



WARNING: DO NOT REMOVE OR ALTER THE LABELS ON THIS PANEL. THE INFORMATION ON THESE LABELS IS IMPORTANT FOR THE PROPER INSTALLATION AND OPERATION OF THIS PANEL.

CAUTION: DO NOT INSTALL ADDITIONAL LOADS IN THIS PANEL.

WARNING
ELECTRICAL SHOCK HAZARD
TERMINALS ON THIS LINE AND LOADS HERE MAY BE ENERGIZED IN THE OPEN POSITION

WARNING
THIS EQUIPMENT MUST BE INSTALLED BY A QUALIFIED ELECTRICIAN. THE INFORMATION ON THIS LABEL IS IMPORTANT FOR THE PROPER INSTALLATION AND OPERATION OF THIS PANEL.

WARNING
DO NOT TOUCH THE TERMINALS OR LOADS ON THIS PANEL. THE INFORMATION ON THIS LABEL IS IMPORTANT FOR THE PROPER INSTALLATION AND OPERATION OF THIS PANEL.



000000

Terminal Block

Terminal Block

Terminal Block

Terminal Block

CAUTION

Terminal Block

Terminal Block

WELFARE



































John Dank
5140 Spring Hill
Chardon Rd.
Lillington
Elec. Mitchell
Nyquist







AS BUILT WORKSHEET



JOB INFORMATION

CLIENT John Dant - July 11, 2022
ADDRESS 5146 Spring Hill Church rd
CUMMINGTON NC 27546

TRADE REQUEST

CREW LEAD
CHANGED ARRAY



PHOTOGRAPHER Nathaniel Hightower

INSTALLER John Dant

DATE July 11, 22



640-07588-15
250VAC-20A
197C-2132

1140























ENERGY STAR
VENT

UNIRAC
Professional Performance



253818U

SPN 00120 8-0

Part 000 01

WCSF08 0046200-01

Manufacture date: 07 14

Factory Code: 010A



FRAGILE | 25

MAILED 05
2024

#UNIRAC

BETTER SOLAR STARTS HERE
FLASHOUT SEMI GLIDERS
UNIRAC

A shipping label featuring a standard 1D barcode at the top, followed by a QR code and several lines of alphanumeric tracking information. Below the tracking information is a 'HANDLE WITH CARE' icon and a 'FRAGILE' icon.





UNIRAC
RECYCLED PAPER
MADE IN THE USA

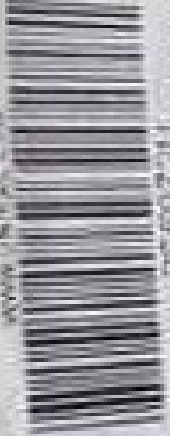
Shipping label with barcode and text

Shipping label on box in background

Shipping label on box in background

MUNIRAC

www.munirac.com



25400720

SEMI TRANSPARENT 72" UPMV DRUM

PACK SIZE 4

W01008081191

Manufacture Date: DEC-2021



California Proposition 65
Reproductive Harm - www.munirac.com
www.munirac.com

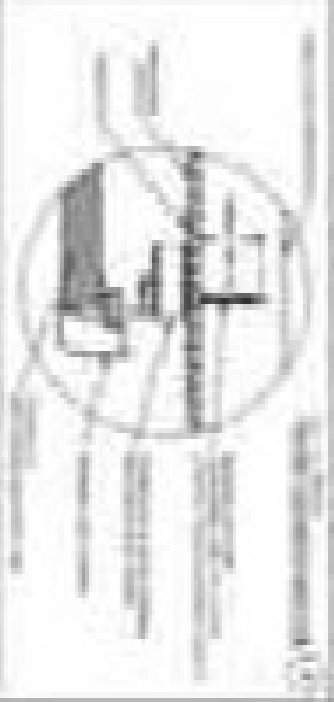
ENPHIAS
QTY 1

ENPHIAS
QTY 1

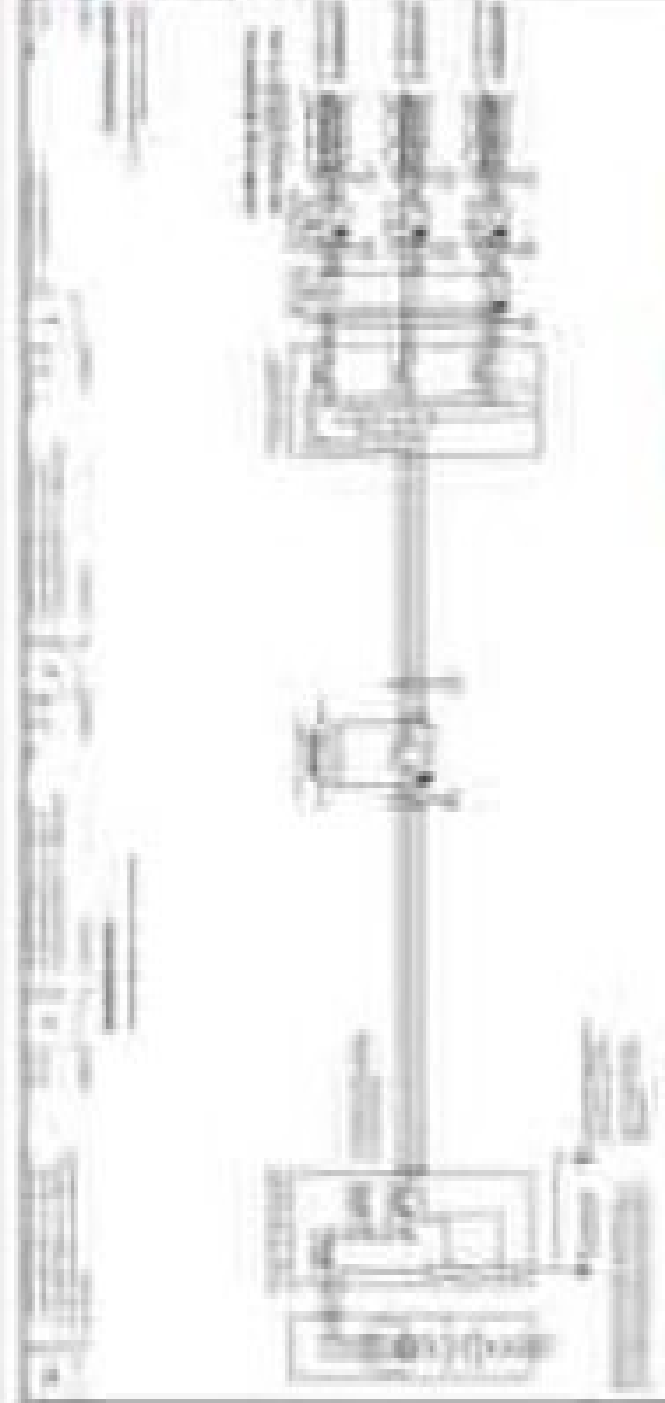
UNIRAC
UNIRAC
253020U
GFM MICROVAL 27
Pack Size: 10
WOPOR 0045419-01
Manufacturer date: 01/04
Factory Code: 0104



1. Introduction
 2. Objectives
 3. Theory
 4. Procedure
 5. Results
 6. Conclusion
 7. References



1. Introduction
 2. Objectives
 3. Theory
 4. Procedure
 5. Results
 6. Conclusion
 7. References



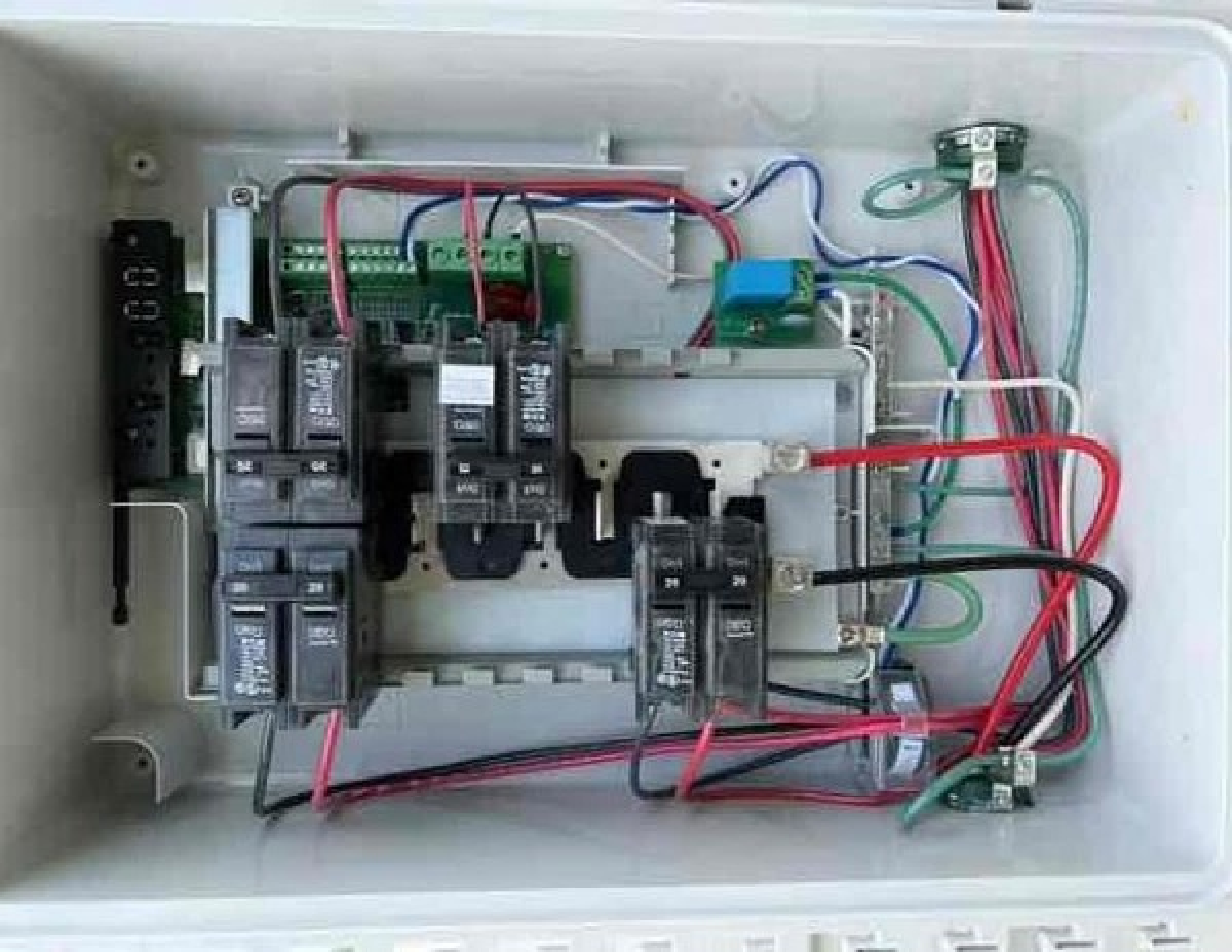
1. Introduction
 2. Objectives
 3. Theory
 4. Procedure
 5. Results
 6. Conclusion
 7. References

1. Introduction
 2. Objectives
 3. Theory
 4. Procedure
 5. Results
 6. Conclusion
 7. References













































000

2



CAUTION



CAUTION
DO NOT TOUCH THE CONTENTS



CAUTION



CAUTION

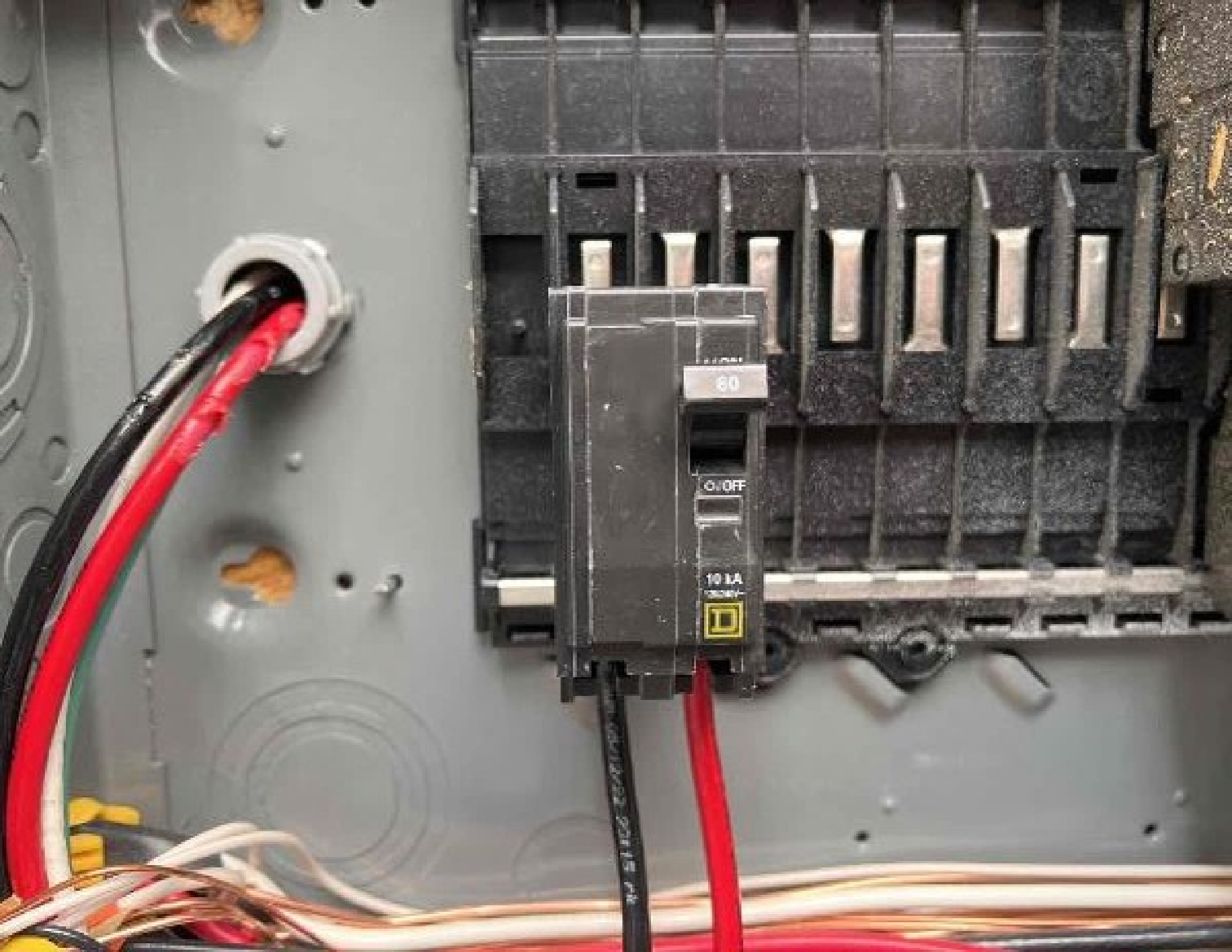
WARNING
DO NOT TOUCH THE CONTENTS



Inventory Form

Item No.	Description	Quantity	Unit	Remarks
1	MPS			
2	MPE			
3				
4				
5				
6				
7				
8				
9				
10				



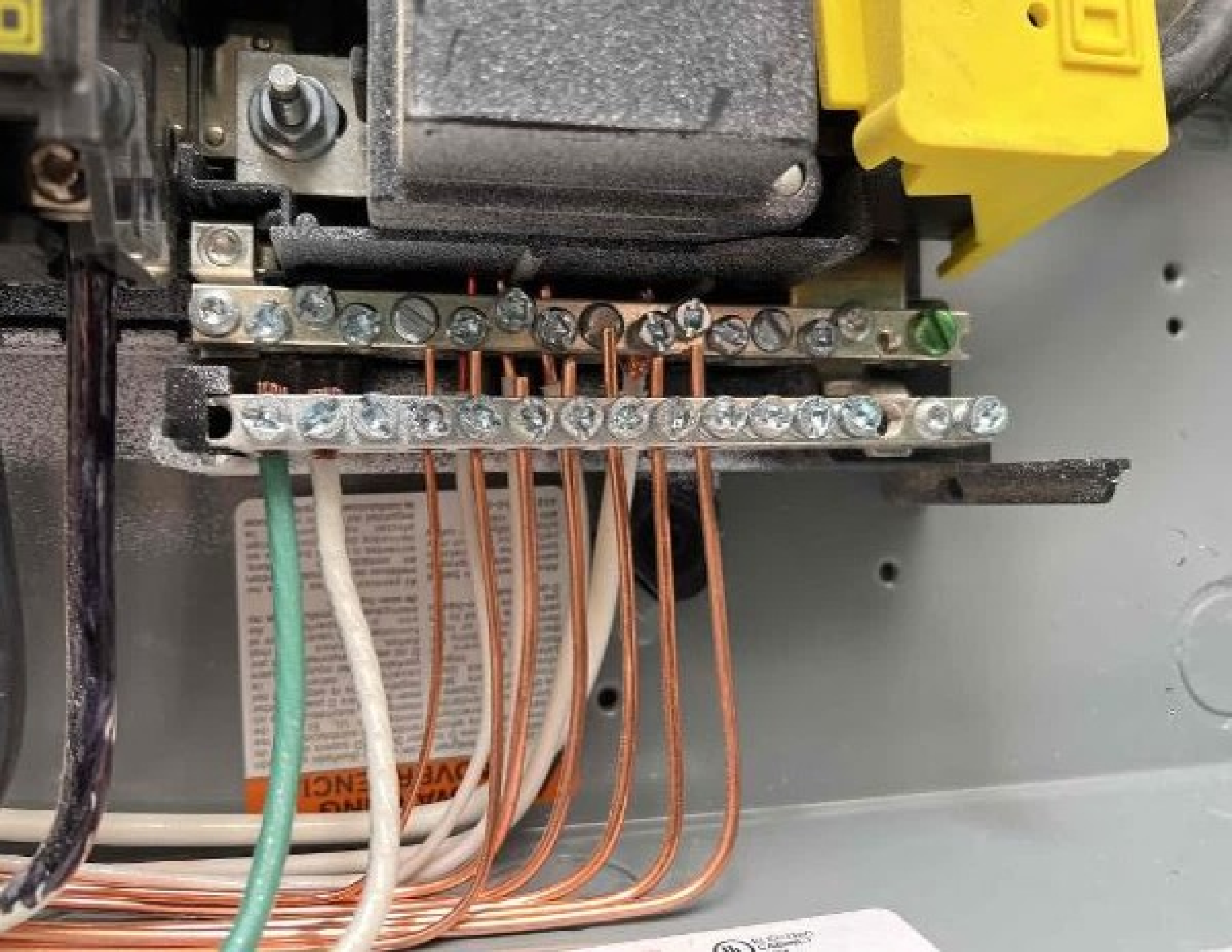


80

O. OFF

10 LA

300V



WARNING: OVERHEATING

3M

