











REC REC Alpha Pure Series
 REC400AA Pure
 Serial Number: FBB-4009939450
 Phone: +65 5495 9300
 www.recgroup.com

Power Output (P_{max}) 400 W
 Watt Class Sorting 0/+5 W
 Power Production Tolerance +/- 3 %
 Rated Voltage (V_{mpp}) 42.1 V
 Rated Current (I_{mpp}) 9.51 A
 Open Circuit Voltage (V_{oc}) (+/- 3%) 48.8 V
 Short Circuit Current (I_{sc}) (+/- 3%) 10.25 A
 Maximum System Voltage (V_{sys}) 1000 V
 Maximum Series Fuse (DC) (UL) 25 A
 Maximum Series Fuse (DC) (IEC) 25 A
 Design Load +4666 / -2666 Pa*
 Maximum Test Load +7000 / -4000 Pa*
 (Values at STC: 1000 W/m² AM 1.5, cell temp 25°C)

Complies to:
 UL Std. 61799-1-2
 Certified to:
 CSA Std. C22.2/MC1380-1
 UL Fuse Rating Type 2*

Intertek
 5017774

IEC 61215
 IEC 61739

CE UK CA

Manufactured: 03.03.2022

See installation manual for mechanical details or requirements and
 for additional requirements for active components (in case)

Warning electrical hazard. This module produces electricity when exposed to light.
CAUTION: DO NOT DISCONNECT UNDER LOAD
 Avertissement: Risque de choc électrique. Ce module soaire produit de l'électricité lorsqu'il
 est exposé à la lumière.
ATTENTION: NE PAS DECONNECTER SOUS TENSION
 For field connections, use min. 4 mm² (12 AWG) UL PV wires insulated for a min. 6190°C
 Made in Singapore by REC SOLAR PTE. LTD.
 20 THIAS SOUTH AVENUE 14, SINGAPORE 627312, SINGAPORE
 EU/Europe Contact: REC Solar EMEA GmbH
 Bismarckstr. 71a, 81541 Munich, Germany, Tel: +49 (0)89-442-38590
 For other regions see: www.recgroup.com/contact

D. Morris - Coats, NC

For IQ-6/7 Systems

For IQ-8 Systems

ENPHASE IQ Combiner 3 ES
 Model: IQ-3ES
 Common Bus
 X (5-AM1-240-0-05)

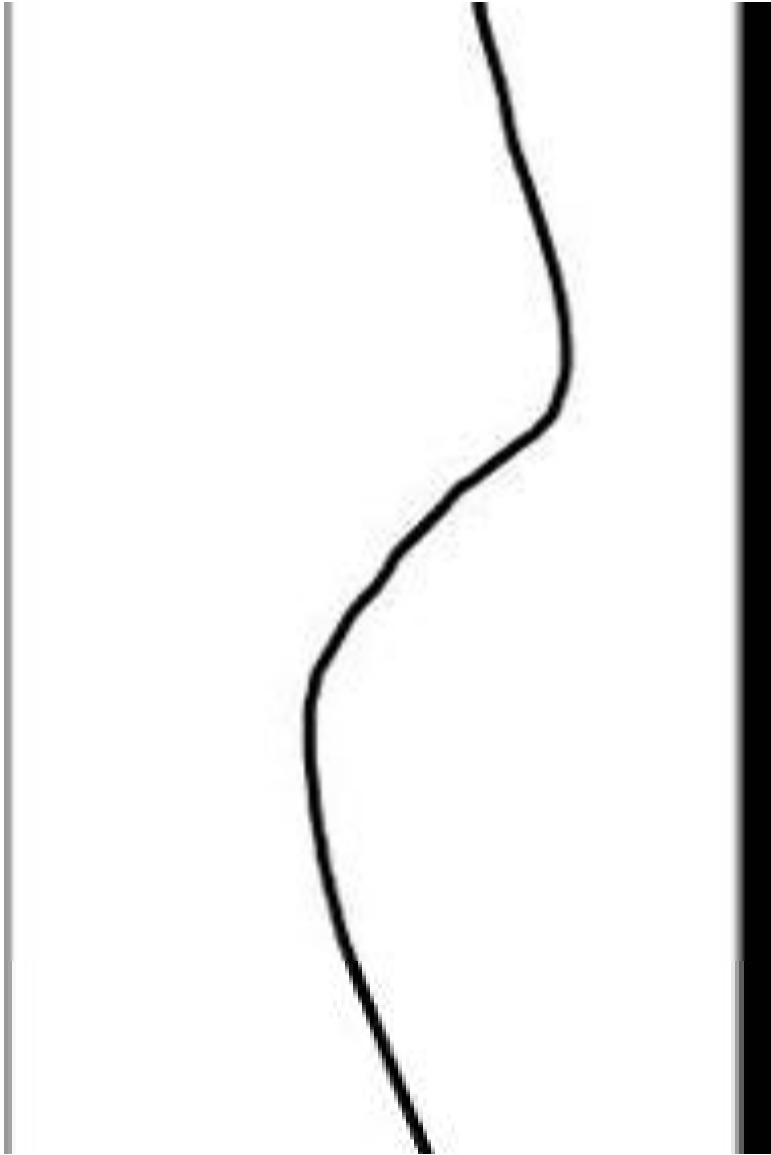
Parameter	Value	Unit
Rated Voltage	120/240 V AC	
DC Breaker	20k A @ 120/240 V DC	
DC Breaker	20k A @ 120/240 V DC	
DC Breaker	20k A @ 120/240 V DC	
Temperature	-40°C to 60°C	
Dimensions	100mm (H) x 100mm (W) x 100mm (D)	

See installation manual for mechanical details or requirements and for additional requirements for active components (in case)

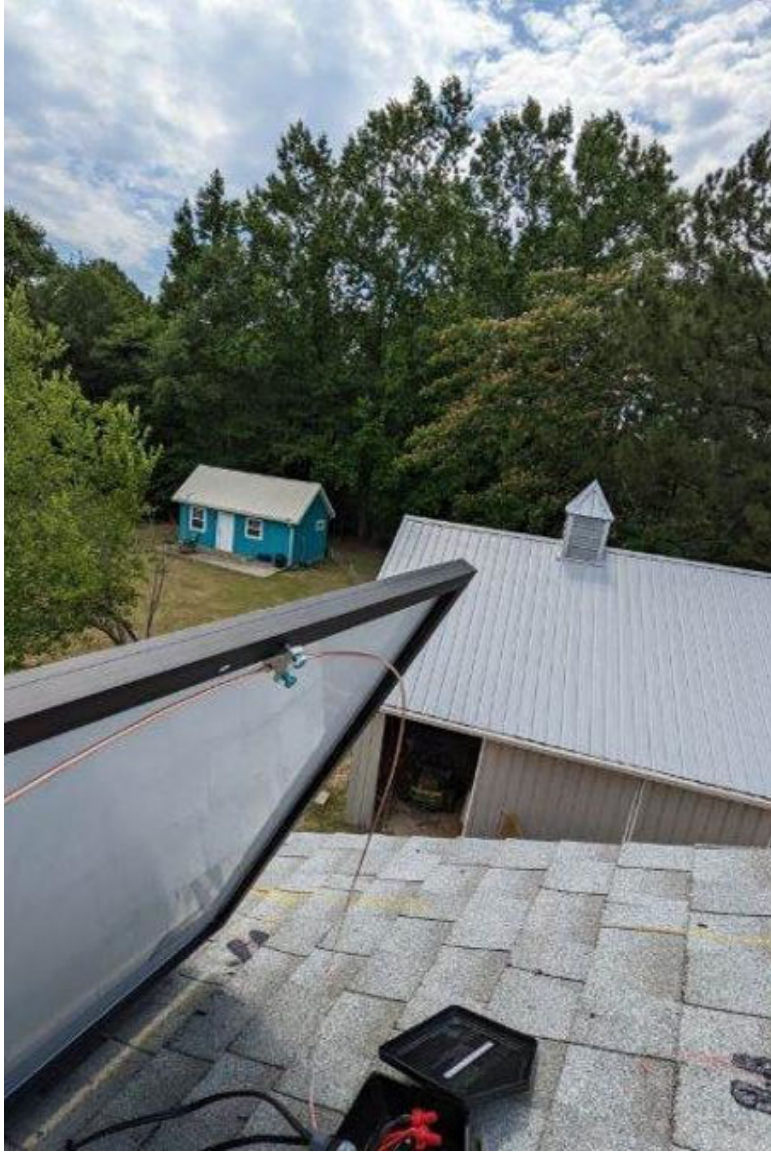
2023



2023








Job Hazard Analysis

Customer Name: **Deborah Moore**

Installation Date: **6/26/22**

Address: **9841 NC 27 E Lenoir, North Carolina 27521**


 **BLUE RAVEN**

Hazard Category	Potential Hazards	Hazard Controls
Ladder Safety	<ul style="list-style-type: none"> Displacement Defective Electrocution 	<i>Prohibit Entry</i>
Fall Protection	<ul style="list-style-type: none"> Fall from 6' or greater 	<i>Safety Harness</i>
Electrical Safety	<ul style="list-style-type: none"> Electrocution ARC Flash 	<i>Prohibit Entry</i>
Heat & Related Issues	<ul style="list-style-type: none"> High Heat- 85° to 99° Extreme Heat 100° or higher 	<i>Wear PPE: eye, hand, provide shade area</i>
Public Protection	<ul style="list-style-type: none"> Falling object Slip/Trip/Fall 	<i>Restrict Access</i>
Nearest Hospital:	<i>Watauga Medical</i>	
Safety Contact:	<i>Sam Williams Dr, Ocon, NC 27534</i>	
Additional Notes:	<i>Watauga Medical 252-228-1211</i>	
Crew Members		
	Name	Signature
Crew Lead:	<i>Yusef Borlino</i>	<i>[Signature]</i>
	<i>Sam Williams</i>	<i>[Signature]</i>
	<i>Joshua Williams</i>	<i>[Signature]</i>

In Case of Emergency, call 911 immediately and proceed to the nearest emergency room
 For non-emergency injuries, please report the injury to your manager, proceed to a medical provider for treatment, and scan the QR code below to complete an Injury/Incident Report Form.

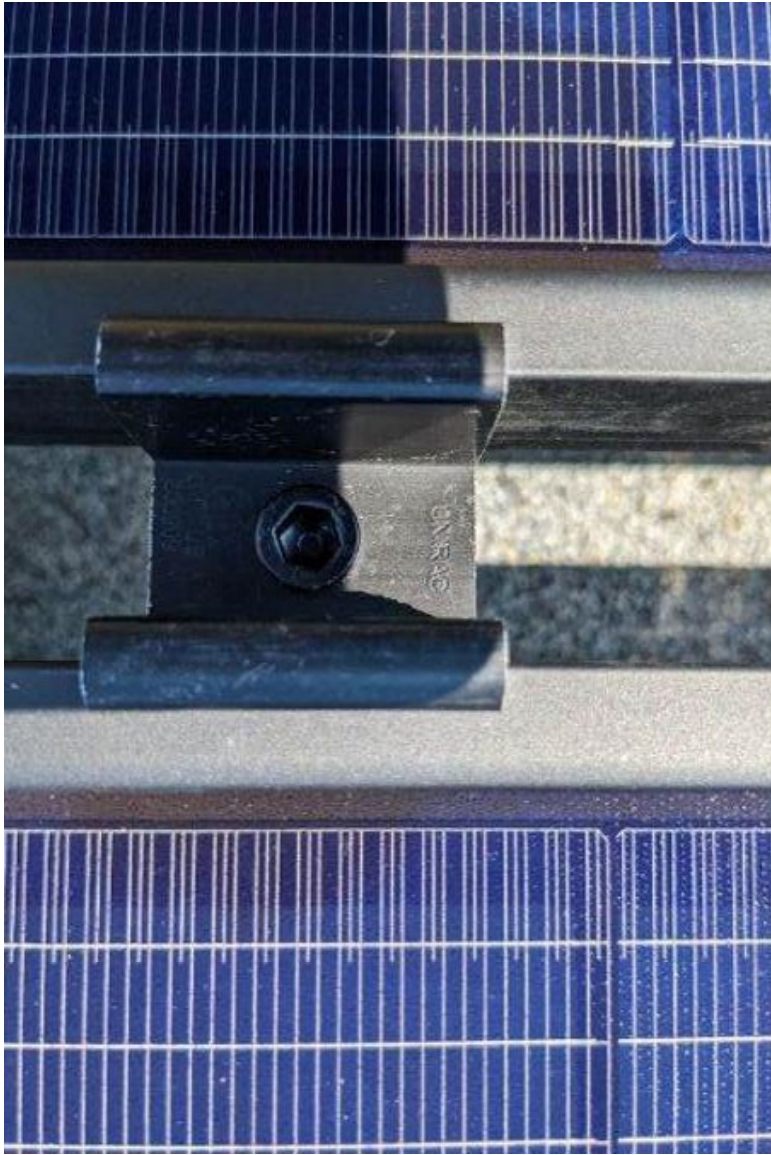
Please request a Work Status Update and provide the information below for any visits to the Emergency Room or Urgent Care.

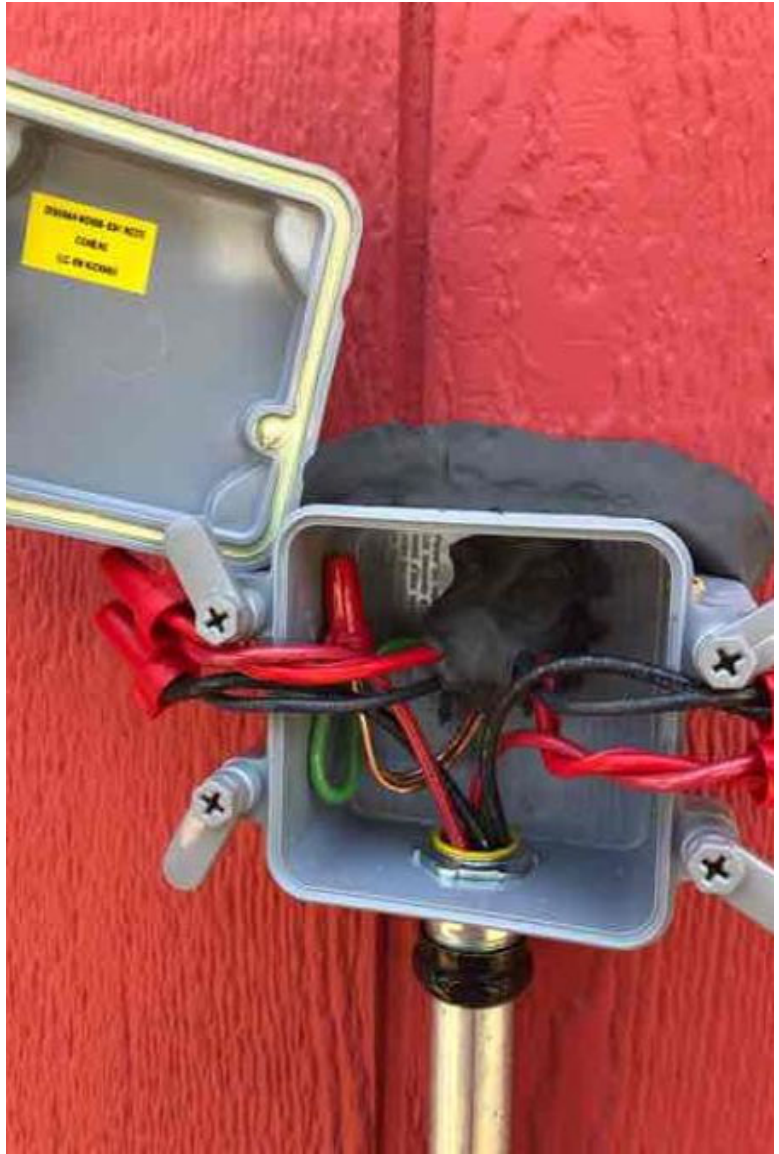
Workers Compensation Provider: Berkshire Hathaway Homestate Companies
 Berkshire Hathaway Address: PO Box 881716, San Francisco CA 94188
 Berkshire Hathaway Fax Number: (800) 661-6984
 Berkshire Hathaway Policy Number: BLWC226029 (OR, FL) - BLWC225838 (all other states)
 Blue Raven Fax Number: (385)-498-408













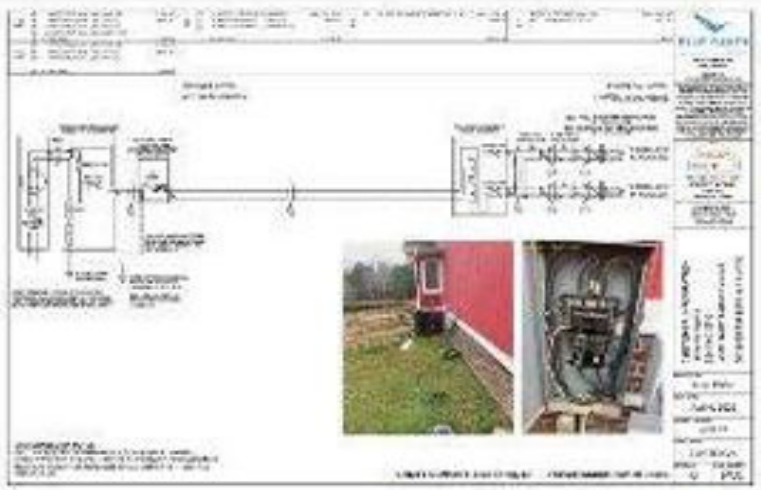
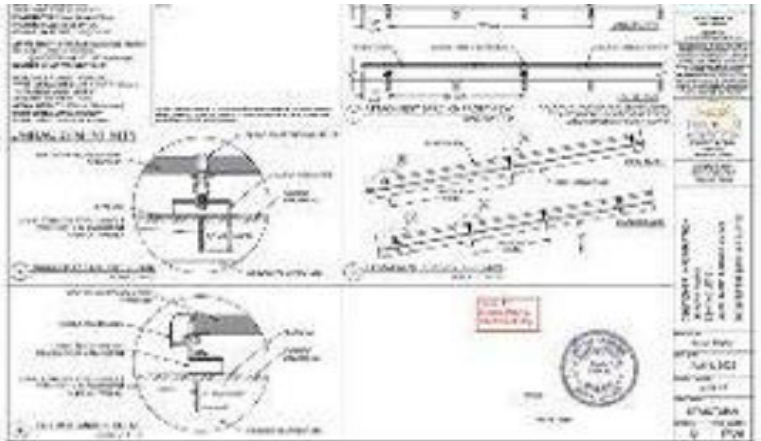






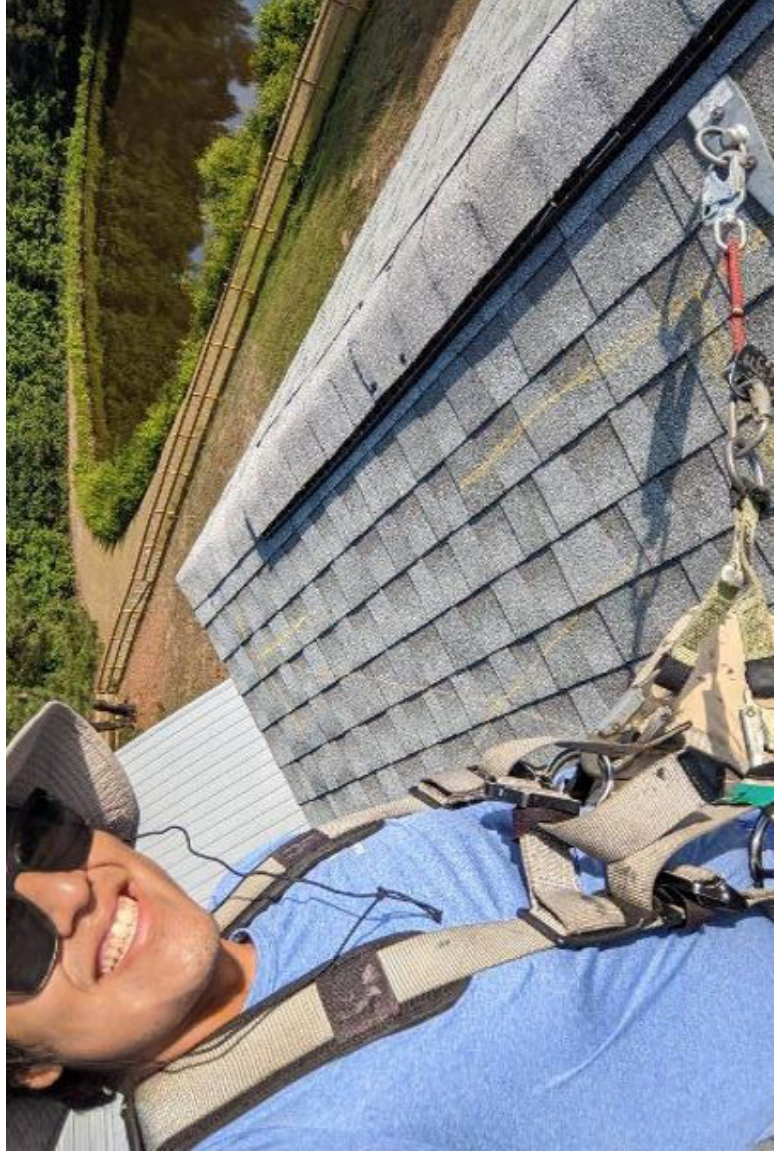


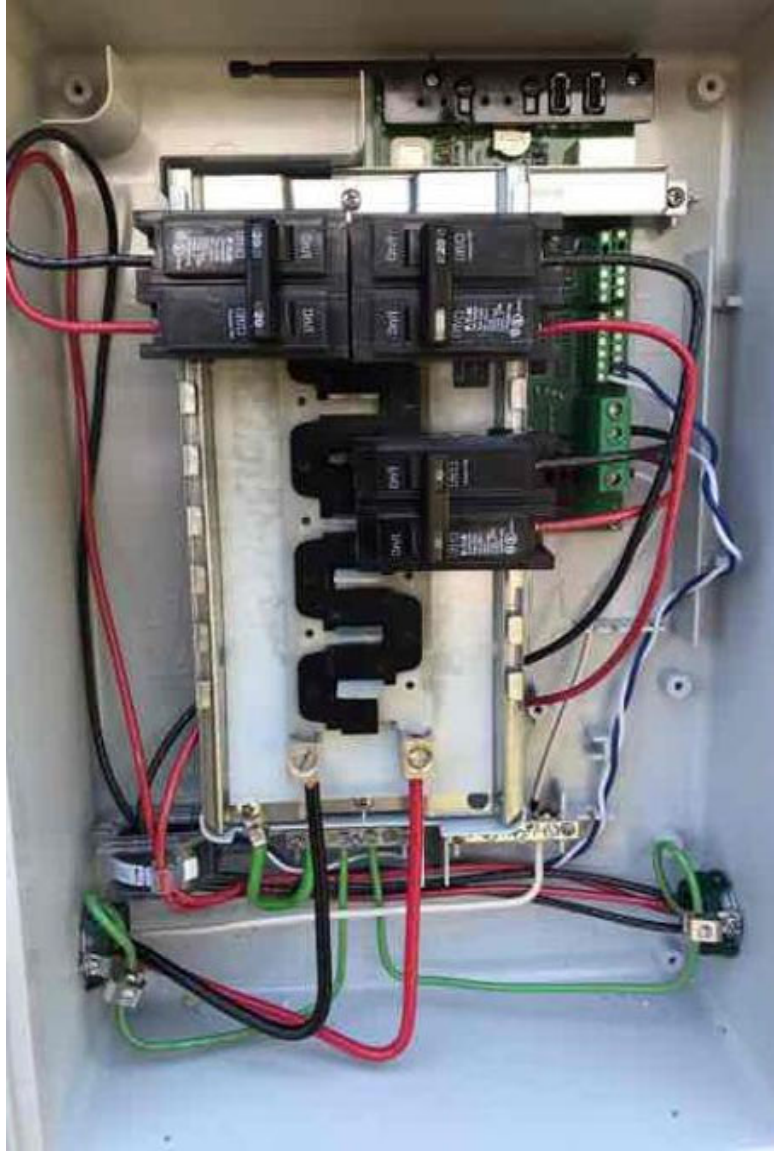




Item No.	Description	Quantity	Unit
1	SPM TRIM PLICE DRK	10	Pieces
2	UNIRAC DUCT	10	Meters











loading...

Power production is enabled

Production
Today: 0.00 Wh Lifetime: 0.00 Wh

Consumption
Today: 0.00 Wh Lifetime: 0.00 Wh

✓

Scan completed

Microinverters : 23/23

[Done](#)

PLC SCAN

Powerline Communications Noise detection

[CHECK NOW](#)

Online

Fully synced



Unsynced Items

Media

0

Project

0

Sync Settings

Sync on Wifi only

OFF

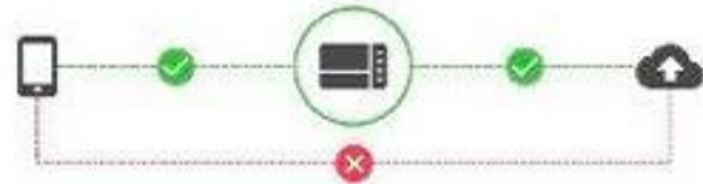
[Having trouble syncing?](#)

Envoy

⌘ Pull to Refresh

Start Provisioning Devices

Envoy 202111057474



Envoy successfully connected to Enlighten and Installer Toolkit

Envoy Connectivity status



Wi-Fi

Connected >

192.168.4.79



Ethernet



Cellular



Software up-to-date

